

# Parkland Goes Western With Annual Round-up

## The TIMES JOURNAL

THURSDAY, JUNE 6, 1957 • Volume 12, No. 39 PUBLISHED AT PARKLAND, WASHINGTON LEnox 7-0223

Sec. 34.66 P.L.&R  
U.S. Postage Paid  
Parkland Branch  
Tacoma, Wash.  
Permit No. 9P

Occupant or Boxholder  
Rural Route  
Postmaster: In unable  
to deliver, return post-  
age is guaranteed on  
addressed papers.

### Friends Rally To Assistance

Things looked pretty bad for Mr. and Mrs. C. D. (Dutch and Dee Bonfoy, who have owned and operated the Parkland Grill the past year, when both suffered critical injuries in an auto accident Friday night, May 31. Faced with a long stay at St. Joseph's hospital, to be followed by an even longer convalescence before either can work again, they could see little chance of continuing service at the Grill where they had developed a fine patronage.

But the human element involved proved the amazing surprise factor: The couple have made a lot of friends in Parkland and these folks just couldn't let them down. The Parkland Grill is open every day at the regular hours, staffed by a crew of volunteer workers who are taking turns at the job, all labor being donated. They expect to keep the Grill in business, and to serve the many customers who count on eating there, until the Bonfoys are ready to take over again. Be seeing you at the Grill!

### Today's Laff . . . . .

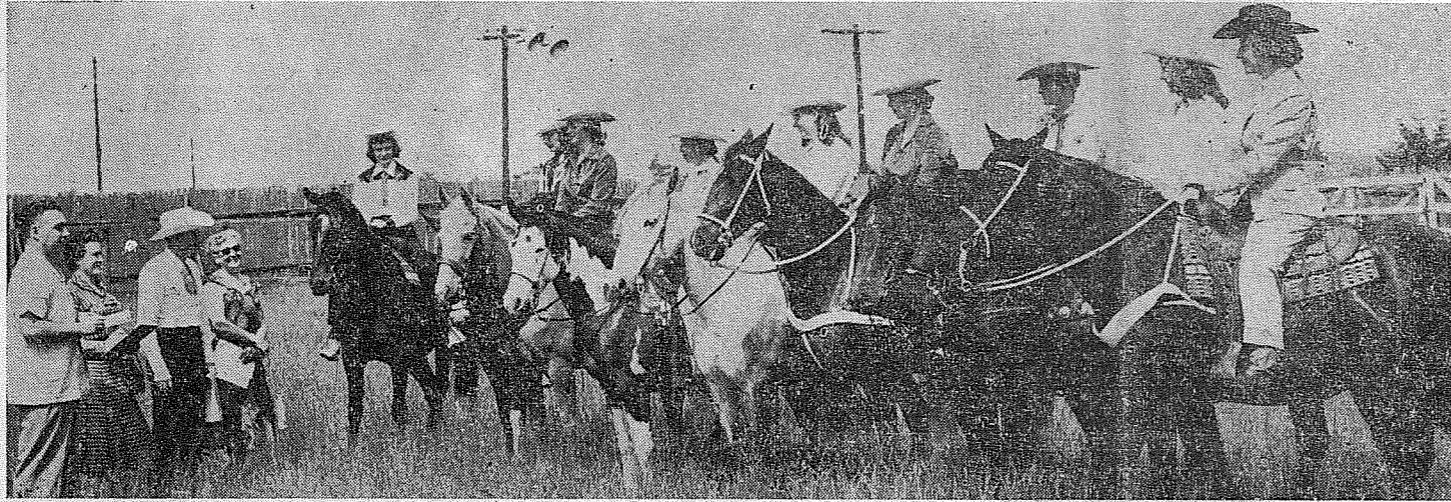
**RODEO . . .** The only place a cowboy has trouble throwing the bull!  
**MEN'S Acme Cowboy Boots . . . . .** \$13.95  
**CHILDREN'S 4 to 12, 12 1/2 to 3 . . . . .** \$5.95  
**BOYS' 3 1/2 to 6 . . . . .** \$7.95  
One-Day Shoe Repair Service  
**PAUL'S SHOES**  
167th & Pacific Spanaway  
Next to Bargain Basket

**Canyada Lodge**  
Open For Business  
Mountain Highway at LaGrande  
Snack Bar  
Hamburgers and Meals

**Professional Directory**  
Farmers Mutual Ins. Co.  
Auto - Fire - Liability  
J. J. GUNNS Agency  
and BARBER SHOP  
303 Ea. 176th St. LE 7-7757  
2 Blocks East of Transformers, Spanaway  
CLIFFORD M. KORSMO  
Lutheran Brotherhood  
Life Insurance  
LEnox 7-5644

**IT'S ROUND-UP TIME AND TIME FOR**  
**ACME BOOTS**  
Priced Right to Fit Your Budget  
**3.95 to 16.95**  
Sizes & Widths For All The Family  
**Soine's**  
PARKLAND SHOE STORE  
411 Garfield St. LE 7-3526  
Open 10 to 6

### Local Lovelies Vie For Parkland Round-up Queen Post



**FACING THE JUDGES**—Saturday afternoon found nine of the ten 1957 Parkland Round-up Queen candidates facing the judges in the arena at South 138th and J streets. Garbed in colorful Western apparel and mounted on their sleek horses, the attractive girls posed a real problem to the judges who must select just one to be Queen. The remaining nine candidates will be honored as Princesses during the Round-up days. The decision of the judges will be announced this (Thursday) evening at the coronation ceremonies at the Parkland Theatre. Shown above, left to right, are: Judges Capt. Clifford Brown, Jean Caddigan and Worthy Hecht, Queen Mother Marge Betts, Patricia Goubert, Pat Wells, Marilyn Ganes, Sandra Lenhoff, Emella Downs, Leona Stant, Marlene Anderson, Jackie Richmond and Sharon Centoni. Sherry Holmes was unable to be present.

### Smorgasbord To Offer Wild Game Saturday, 8th

A big thrill was experienced by Mrs. Roy Marshall, when she took this 55 pound salmon at La Push, Washington—one of the big salmon to be baked this Saturday night for the Second Annual Wild Game Smorgasbord at Franklin Pierce high school. Also on the smorgasbord will be cougar brought down from Vancouver Island by inveterate hunters Frank Hansler and Jack Mullins, as well as elk brought back from the upper Wynooche Valley by Bob Keller and Fred Bartlett, and deer from Satsop county, taken by Cecil Neighbors, also from Ferry County taken by Frank Lapinski. Other big salmon will be furnished by Roy Marshall and Al Greco, and it is expected that bear will be furnished by a local hunting club. Courtesy tickets are now being distributed everywhere for the free smorgasbord, where people may donate as little or as much as they like towards the construction of a community swimming pool to be located at Franklin Pierce high school.

The Ta-Wanka girls service club from the high school will assist in serving, as well as many women from the community. Entertainment provided thru-out the evening will include pantomime skits by Sharon Lantz and Sandy Christilaw, songs by Virginia Miller and Julie Natucci, marimba and dance numbers by Tommy Collier and dance numbers by Bobby and Becky Keller and a group including Jane Bloom, Marilyn Miller, Jade Perryman, Marsha Meek, Carol

McCormack, and Kathy Hall. Niles Schomberg will be master of ceremonies at the festive smorgasbord, and Jimi Dryer, Mrs. Bessie McNicholas, John

### F. P. Spelling Contest Held

The Franklin Pierce school district held its annual grade school spelling bee May 31 at the Franklin Pierce high school. Students from Midland, Parkland, Collins and Central Avenue 7th and 8th grades participated. Each school sent its champion speller to the finals it was necessary for the student to be the champion of his or her own school. The winners were:

**7th Grade**  
1st, Elaine Rogness, Midland; 2nd, Kathleen Hanson, Parkland; 3rd, Edna Jorgenson, Collins; 4th, Margaret Van Alstyne, Central Avenue.

**8th Grade**  
1st, Beatrice Frederickson,

### Recreation Group Due At Spanaway

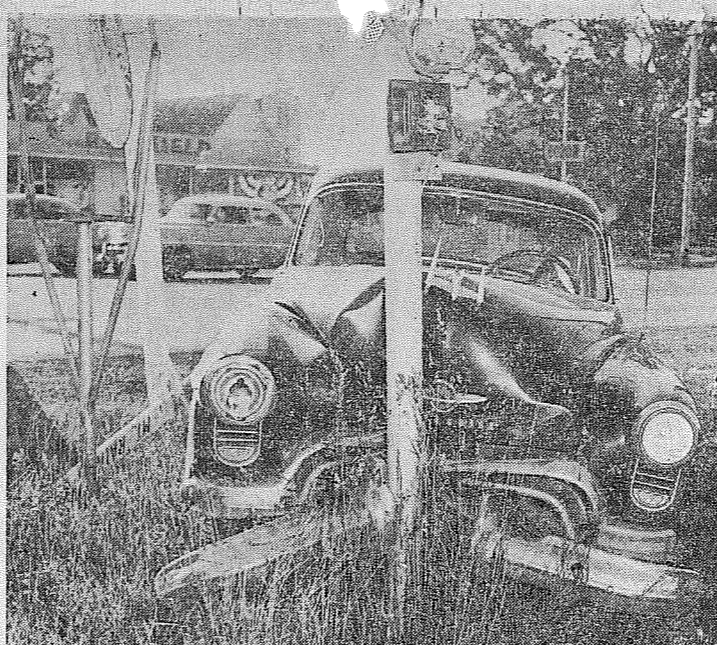
The regular meeting of the Spanaway Recreation Association will be held this (Thursday) evening at 8:00 o'clock at the Spanaway school. All members and others interested are urged to attend.

### Picnic Postponed

The James Sales Preschool has postponed the potluck picnic because of the many cases of measles in the area. Originally planned for June 7, the picnic will now be held June 14 at 12:00 noon at Wapato park.

Midland; 2nd, Judy Leraas, Parkland; 3rd, Kathy Wenner, Central Avenue; 4th, Roberta Gillette, Collins.  
Each participant was presented a ribbon for winning one of the 4 places.

### Freak Accident



**BELIEVE IN SIGNS?**—Ray C. Demler of Rt. 7, Box 236-A, Tacoma, probably believes in signs: If there hadn't been a sturdy sign post to stop his car May 28 it might be going yet! Demler was driving south on Pacific avenue at moderate speed when his Olds coupe rammed the rear end of an International pick-up driven by Louis W. King of Tule Lake road, went out of control, sped diagonally across three traffic lanes and crashed into the base of the Pacific Lutheran College sign at the head of Garfield street, Parkland. King and his pick-up escaped noticeable damage and Demler suffered only a slight facial cut, but his car will need considerable fixing. Officer Guilford Paulson of the Washington State Patrol investigated the accident. —McKewen Studio Photo

This is the week that Parkland reverts to the days of the Old West—gals in calico, men in typical cowboy garb. Heavy boots beat their rhythms, six-guns swing in holsters. After months of planning and work, the 1957 Round-up takes over for this one week of the year. As in the past, all proceeds of the event will be used to improve the Parkland recreation area at 138th and J Sts.

Johnny Bussanich (Thriftway Markets), this year's Round-up chairman, has surrounded himself with a lot of busy people, each one in charge of some exciting, colorful feature of the big show. The Wednesday night dance on the blacktop section of the playground started the Round-up off in good shape. The affair was free to the public and with dancing to the music of Ray Bartley's Western Rhythmeers a good time for all was a foregone conclusion.

Today (Thursday) is one of the big days of the Round-up. Promptly at 6:00 p.m. the Pony Express ride, sponsored by the Pierce County Sheriff's Posse, will leave the post office in Olympia with the letter from Gov. Albert D. Rosellini which will formally open the Round-up. The delivery of this letter to Jack Quill, in charge at the Parkland post office, will mark the opening of the Queen coronation ceremonies at the Parkland theatre at about 8:00 o'clock.

At the coronation ceremonies the identity of the 1957 Round-up queen will be revealed. The other nine candidates will reign with the Queen as Princesses during the Round-up. On Friday evening the Pierce County Sheriff's Posse will offer one of the really important events of Round-up week—their horse show in the arena. This is sure to be a popular affair. The Saturday parade is said to be shaping up very well. As usual it will start at 96th and Patterson Sts. promptly at 10:00 a.m. and proceed to the Round-up grounds with a detour to Park avenue through the business section of Parkland.

Shortly after the parade reaches the Round-up grounds the big afternoon rodeo will start. The big Round-up dance will be held Saturday evening at Bresemann's Park on Spanaway lake. During intermission there will be judging of the beard growing contest, with handsome prizes to the winners in the various divisions.

The Round-up will close with the Sunday afternoon rodeo at the grounds. During the entire week, starting Monday, the Rainier Shows carnival company has offered entertainment to young and old with a wide variety of rides and games on the Round-up grounds.

### Gov. Rosellini Invited To Round-up



**BE OUR GUEST!** Gov. Albert O. Rosellini extended a warm cordial welcome to Johnny Bussanich and Bart Payne, general chairman and publicity chairman, respectively, of the 1957 Parkland Round-up, when they visited the state capitol at Olympia last week to acquaint him with plans for the big annual celebration. The governor was much interested in the Round-up which is held each year to raise funds for the development of the community recreation center, and stated that he would enjoy attending the Round-up but previously scheduled engagements would prevent his appearance here. In the above photo Bussanich, right, is handing Gov. Rosellini passes for the several events while Payne, left, looks on. Photo by McKewen

### Round-up Funds Grows By \$46.90

The Parkland Round-up Rodeo breakfast served Friday and Saturday mornings in the Park 'n Shop Thriftway market netted the Round-up fund \$46.90. The cooking and serving of the tasty repast was expertly handled by a few ladies of the Round-up committee.

The following products were donated for the event: Shurline coffee, Pillsbury Pancake Mix, Sunny Jim Syrup, Minute Maid Frozen Orange Juice, Darigold Butter and Carsten's Hygrade Bacon.

Temperatures at the geographic South Pole is expected to reach 120 degrees below zero in August.

### Card Party

The Riverside Valley Grange will hold a card party at the hall Friday evening, June 14, at 7:30 o'clock. The donation of \$1.00 per couple will include refreshments. Prizes will be awarded; everyone welcome.

### Strawberry Fete

Faith chapter, O.E.S., will hold a strawberry festival in the Fern Hill Masonic Temple at 84th and Park avenue on June 9; the hours, 2:00 to 5:00 p.m. There will be a handwork booth. All are cordially invited; donation is 50c.

**BUY - SELL - TRADE "ANYTHING"**  
**U - B SAVING MART**  
12603 Pacific Avenue

### Altar Society

Our Lady Queen of Heaven Altar Society will meet Monday evening, June 10, at 8:00 o'clock in the parish hall, 146th and A. Mrs. Joe Boyle presiding. Hostesses for the coffee hour will be Mesdames Jennie Kanton, Andrew Lorenze, Kenneth Miller and William Monk.

**SHOP & SAVE AT BROOKDALE LUMBER COMPANY**

### Round-up Paint Specials

Boysen Outside Bungalow Gal. House Paint \$3.45  
\$6.39 Gal. Quart 100% Pure . \$2.06

### PAINT THINNER

Your Container 49c gal.  
Rubberglow Quart Latex Paint \$1.98

Covers in one coat. Washable Pure Bristle Each 4" Wall Brush \$1.98

We'll Be Seeing You at The PARKLAND ROUND-UP

**BROOKDALE LUMBER COMPANY**  
LE 7-8669  
136th & Pacific

**Easy Parking** LE 7-0253  
**Dryer MORTUARY**  
15th and Pacific  
PARKLAND

**Cedar Mill Run Wood up to 25" PICKUP or TRAILER LOAD**  
U-Haul 50c  
**Split Cedar Fence Posts** 37c ea. in lots of 300 43c ea. in lots of 100  
LE 7-4080

Navy Seabees relocated 150,000 adels penguins to build an Antarctic base during Operation Deepfreeze.

**Swap or Sell**  
Excellent Small Business Hamburgers Soft Ice Cream, Etc. Fine Location!  
Want Good Car or Equity in Same. VI 7-7847  
ROY - Y - IN & OUT

FRIENDLY SERVICE SINCE 1908 Convenient To All Cemeteries All Cost On One Plan  
**PIPER FUNERAL HOME**  
PHONE Greenfield 2-3353 5436 SO. PUGET SOUND

**"HI NEIGHBOR"**  
NEW CARS — GO-TO-WORK CARS — FISHING CARS  
1957 CHEVROLET 6 4-Dr. Sedan, down payment \$600.  
1957 WILLYS 4-wheel drive Station Wagon, down pmt. \$600  
1955 CHEVROLET 6 4-Dr. Sedan, down payment \$350.  
1955 CHEVROLET 6 o'drive, 2-Dr. Sed. down payment \$350  
1954 CHEVROLET 6 2-Dr. Sedan, down payment \$250.  
1953 FORD V-8 o'drive, 2-Dr. Sed. down payment \$250.  
1955 FORD 1/2-ton Pick-up, down payment \$400.  
1955 GMC 1/2-ton Pick-up, down payment \$400.  
1954 GMC 1/2-ton Pick-up, down payment \$300.  
1954 GMC 3/4-ton Pick-up, down payment \$300.  
1952 CHEVROLET 1/2-ton Pick-up, down payment \$250.  
1950 GMC 1/2-ton Pick-up, down payment \$200.  
1950 CHEVROLET 3/4-ton Pick-up, down payment \$200.  
1947 FORD 1/2-ton Flat Bed, down payment \$100.  
1948 FORD 3/4-ton Pick-up, down payment \$150.  
Write us - Wire us - Phone us  
A SALESMAN WILL CALL  
**KLASEY CHEVROLET CO.**  
MORTON, WASH. PHONE 2484  
Open Every Day 8:00 a.m. Till 8:00 p.m.

**AIRPORT ROCKET SERVICE**  
Hey you dudes! No get up and go to your horseless carriage? Get along over to Hop-a-long Joe Morgans for a shot of Rocket Gas. While you're there, Hop-a-long can straighten your wagon wheels and clean up your lamps.  
**AIRPORT ROCKET SERVICE**  
424 SOUTH 112TH

**ROUND - UP TIME IS HERE**  
There'll be Rodeoing, Dancing Parading and Fun For All, So Let Us Get Your Western Duds All Cleaned and Ready To Go!  
**PARKLAND CLEANERS**  
11004 Pacific Ave. LEnox 7-3221  
North of the Bank Corner  
24 HOUR SERVICE AT THE PLANT



# STRIKE IT RICH at STOKELY-VAN CAMP GOLD DOLLAR SALE

**SUMMIT  
TRADING  
COMPANY**



<p><b>Stokely's SWEET PEAS</b> 303 CANS</p>	<p><b>Stokely's WHOLE KERNEL Or CREAM CORN</b> 303 CANS</p>	<p><b>Stokely's RED TART PITTED CHERRIES</b> 303 CANS</p>	<p><b>VAN CAMPS TAMALES WITH SAUCE</b></p>
<p><b>VAN CAMPS TOMATO CATSUP</b> 14-oz. BOTTLE</p>	<p><b>Stokely's SWEET PEAS</b> 303 CANS</p>	<p><b>Stokely's WHOLE KERNEL Or CREAM CORN</b> 303 CANS</p>	<p><b>Stokely's RED TART PITTED CHERRIES</b> 303 CANS</p>
<p><b>Stokely's FINEST GREEN BEANS</b> 303 CANS</p>	<p><b>Stokely's GRAVENSSTEIN APPLE SAUCE</b> 303 CANS</p>	<p><b>Stokely's FRENCH SLICED OR WHOLE PEAS</b> 303 CANS</p>	<p><b>VAN CAMPS TAMALES WITH SAUCE</b></p>
<p><b>Stokely's FINEST GRAPEFRUIT SECTIONS</b> 303 CANS</p>	<p><b>Stokely's SLICED OR HALVES-CLING PEACHES</b> 2 1/2 CANS</p>	<p><b>Stokely's FRUIT COCKTAIL</b> 303 CANS</p>	<p><b>VAN CAMPS KIDNEY BEANS</b></p>
<p><b>Stokely's SALADETTES</b> 303 CANS</p>	<p><b>Stokely's FORDHOOK LIMA BEANS</b> 303 CANS</p>	<p><b>Stokely's BLUE LAKE GREEN BEANS CUT</b> 303 CANS</p>	<p><b>Stokely's BEETS</b> 303 CANS</p>

NO. 2 1/2 CANS  
**PORK & BEANS**  
5 For \$1

**BANNER OLEO**  
5 lbs. \$1.00

GERBER'S STRAINED  
**BABY FOOD**  
12 for \$1.00

REAL GOLD - Makes a Full Quart of Juice  
**Orange Base** 6-Oz. 2 For 29c

FISHER'S - For Quick Meals and Salads  
**ALA** 14-Oz. Pkg. 19c  
NABISCO Lb. Pkg.  
**Lemon Marshmallow Cookies** 43c  
VAN CAMPS - WHITE OR GOLD 2 1/2 Tins  
**HOMINY** 4 For \$1.00  
24-Tablet Bottle  
**BAYER'S ASPIRIN** 21c

SUMMIT SPECIAL  
**COFFEE** Lb. 79c

For Salads Or Cooking  
**Kraft Oil** Quart 49c

LARGE AA NEST FRESH  
**EGGS** Doz. 43c

BUY ME - I'M FRESH SMOKED  
**HAM** Lb. 53c  
Whole or Any 1/2 - Aver. Wt. 12 to 14 lb.

GRAIN FED  
**Pork Chops** Lb. 53c

SUMMIT FARMS FRESH MADE  
**Link Sausage** Lb. 53c

OUR OWN DRY CURED  
**BACON**  
• Less Shrinkage  
• Fresh Smoked  
• Exclusive Here

SWANSON'S FROZEN  
**MEAT PIES** 4 For 89c  
TURKEY - CHICKEN - BEEF

SWANSON'S FROZEN  
**CHICKEN** Lb. Pkg. 79c  
THIGHS OR DRUMSTICKS

CALIFORNIA Lb.  
**WATERMELONS** 6c

**CARROTS** Lb. 17c  
**LEMONS** 2-Lbs. 25c

DON'T FORGET TO ATTEND THE  
**THE PARKLAND ROUND-UP**  
THURSDAY - FRIDAY - SATURDAY & SUNDAY

**Paint Time**  
OUTSIDE WHITE  
Quality Paints  
Gallon \$2.98

STORE HOURS  
8 A.M. TILL 9 P.M. DAILY EXCEPT SUNDAYS

(Large Paved Parking Lot)  
**SUMMIT**  
TRADING COMPANY  
10409 Canyon Road - Tacoma LE 7-5848  
No Sale To Dealers  
We Reserve The Right To Limit Quantities

# Lewis Meat Market

FORMERLY MALCOM'S

Hormel	Pound	By The Piece	Pound
<b>SMOKED PICNICS</b> . . .	<b>35c</b>	<b>BOLOGNA</b> . . . . .	<b>29c</b>
<b>GROUND ROUND</b> . . .	<b>49c</b>	Shoulder	Pound
Country	Pound	<b>RIB STEAK</b> . . . . .	<b>47c</b>
<b>PORK SAUSAGE</b> . . .	<b>3/89c</b>	<b>SIRLOIN STEAK</b> . . . .	<b>59c</b>
Lean	Pound	<b>SLICED BACON</b> . . . .	<b>41c</b>
<b>GROUND BEEF</b> . . . .	<b>25c</b>	By The Half For Freezing	Pound
<b>BEEF SAVE!</b> For your freezer	25-Lbs.	<b>BEEF</b> . . . . .	<b>34c</b>
<b>BEEF</b> . . . . .	<b>\$9.95</b>	All Cuts Included	

• BEEF SLAUGHTERING - \$5.00 A HEAD •  
10903 CANYON ROAD At SUMMIT VIEW

Open: Tuesday thru Saturday, 9 a.m. Till 6 p.m.

Phone LEnox 7-8258

## Early Day Spanaway School Group



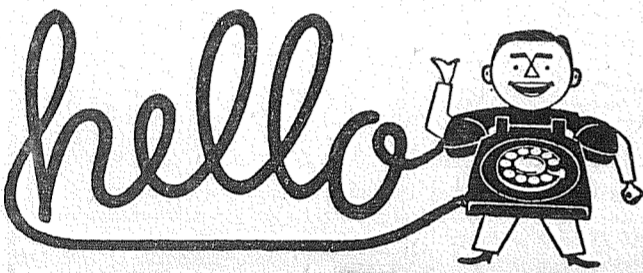
**FACES FROM THE PAST**—What was school like some 60 years ago in the Spanaway area? One Spanaway man knows—Bill Locke—for he is pictured in the group above, the pupils and teacher of a school located about five miles south westerly of Spanaway, from a photo taken about the year 1886. According to Mr. Locke, the one-room school was built of rough unplanned 1x12-inch up and down boards with 1x4-inch battens nailed over the cracks; there was no finish for inner walls or ceiling. The nearest well (and also the nearest farm) was 3/4 mile away; the children walked to school, some of them 2 1/2 miles. School lasted three months each year and few children received more than 18 months' schooling—this was rated as six years of education. The teacher was paid \$25 a month and "boarded round" free with the families of the district. Pictured, left to right, are: Robert Locke, Harry Horax, Edith Parkhurst (the teacher), Daisy Platter, Maude Hewitt, Frank Wilcox, Roy Hewitt, Lucy Peterson, Celia Peterson, Arthur Locke, Effie Baker, Anna Hewitt, Elmer Hunt, Carl Malim, Daisy Hewitt, Joe Barnes, Bill Locke, Bessie Platter, Lula Locke, John Horax, Arthur (Pat) Peterson and Delia Wilcox. Only five of these are still living, Mr. Locke believes. These are Anna Hewitt of South Seattle, Roy Hewitt of Seattle, Arthur Locke of Tacoma, Arthur (Pat) Peterson of East Parkland and Bill Locke of Spanaway.

Thursday, June 6, 1957  
The TIMES - JOURNAL

Page 3 **Parkland Fire Hall**  
**Number Is LE 7-8122**

The Parkland Volunteer Fire Department asks all people of the community to write down the new fire hall number—LEnox 7-8122. While this number is to be called ONLY to report a fire, the men advise that even small fires should be reported because small fires rapidly become dangerous unless checked.

Fire permits are now required for all outside fires at this season of the year. Permits may be obtained at the fire hall, 114th street between Pacific avenue and A street, any evening after 8:00.



**DON'T FORGET!!**

**ALL TACOMA - PUYALLUP -  
SUMNER AND GRAHAM**

**TELEPHONE NUMBERS HAVE  
CHANGED**

We certainly appreciate the fine cooperation you folks have shown in helping to make this large scale telephone number change a success. It has been a big job and your continued help is very important.

Here are a few things to remember in making a telephone call under our new system:

1. Look up the correct number in the new telephone directory.
2. Jot the number down so you will have it before you when you dial.
3. Listen for the dial tone (a steady humming sound).
4. Dial TWO letters and FIVE numbers carefully, keeping your eye on the dial.



Dial TWO letters and FIVE numbers

This new dial telephone numbering system is engineered to keep pace with this area's steady growth. Your new numbers are also engineered to fit the Tacoma area into a future nation-wide dialing system.

Have you noticed the handy index to the Yellow Pages in your new telephone directory? All headings and cross-references in the Yellow Pages are shown in this new index to help you "Find it fast—in the Yellow Pages."

Bill McLeod

## Golden Wedding For E. Heisters

Mr. and Mrs. E. B. Heister were honored Sunday afternoon at a reception at the Summit Methodist church when the church and the Woman's Society of Christian Service held open house in celebration of the 50th wedding anniversary of the couple. About 75 friends and neighbors gathered to wish them much happiness in the years to come. The Heisters have been active in the community for the past 28 years.

Joining them to share the happy occasion were their daughter and family, Mr. and Mrs. Arlo Morton and daughters Maryanne, Joyce and Anita. Their only son, Clarence, who is stationed in Washington, D. C., with the Federal Communications Commission, came home to help them celebrate.

New Son

A son, Kenneth Lee, was born Sunday at Tacoma General hospital to Mr. and Mrs. Robert Shipp (Joan Wangelin). The baby is the first grandchild for Mr. and Mrs. George Wangelin.

W.S.C.

The Woman's Society of Christian Service of Summit church will meet in the hall Thursday, June 13, at 11:00 a. m. for the regular monthly session. All members are urged to attend as this will be the first meeting of the new year. Mrs. Clarence Ralph, the new president, will preside.

Transferred

Helen Shephard, daughter of Mr. and Mrs. Russell Shephard, who has been working for the telephone company in Seattle, has been transferred to a similar position in Los Angeles. Helen finished Central Avenue school and Franklin Pierce high.

Going on Trip

Mrs. Adolph Johnson, who lived on Pennsylvania avenue for many years before moving to Tacoma, is leaving June 8 on a Travelers Tour that will take her to Stockholm, Sweden, where she will visit old friends and relatives.

Home Again

Mrs. Casper Irish and son Tommy have returned home from Bismarck, N. D., where they were called by the death of her mother, Mrs. George Jennings, who will be remembered by many who knew her when she spent much of 1954 with the Irish family.

Reporter—Mrs. M. S. Rau, LE 7-8391.

1957 PARKLAND ROUND-UP  
JUNE 7 - 8 - 9

**SUN TAN LOTIONS** PICNIC SUPPLIES  
Swimming Accessories  
Prescriptions Carefully Compounded  
**McAuley**  
Summit Drugs  
Airport & Canyon Roads  
LEnox 7-0668

ATTEND THE *Parkland* **ROUND-UP and RODEO**  
THURS., FRI., SAT. & SUN.  
**SUMMIT FEED**  
Knapp & Canyon Roads  
Next to Summit Trading Co.  
LE 7-7136 We Deliver

**Butler's Garage**  
Phone LE 7-8209  
One Block North Airport  
Road on Canyon Road

**NECCHI-ELNA Sewing Machines**  
**FREE** Home Trials & Sewing Lessons  
Rentals and service on all makes of machines. Many used reconditioned machines at low prices. Portables from \$9.95. Easy terms, liberal trade-in allowances.  
**NECCHI - ELNA CO.**  
Lakewood  
Lakewood Center JU 8-2331

**Plywood**  
**Finished Lumber**  
**Hardware - Paints**  
**Plumbing Supplies**  
FOR ALL YOUR BUILDING NEEDS - SEE...  
**& Hardware Co.**  
Summit Lumber  
5303 East 112th LE 7-4555  
Open 9 a.m. Till 6 p.m.

**DO IT YOURSELF**  
REAL  
**Clay Tile**  
FOR BATHROOM & KITCHEN  
Standard Grade **77c** Per Sq. Ft.  
**B & W TILE** . . . . .  
**TOOLS RENTED**  
1207 So. Kay St. Tacoma  
**BR 2-5017**

# Round-Up of Bargains!

**DON'T MISS IT!**

THE PARKLAND ROUND-UP JUNE 7-8-9

**LIFE-SAVERS**  
And **BEECHNUT GUM**  
Ctn. of 6 Pkgs. **19c**

**EGGS**  
**LARGE AA**  
Received Fresh Daily From One Local Farm  
Doz. **43c**

**OPEN SUNDAYS**  
**9 TIL 7**

**JAMES HENRY - YANKEE BRAND**

**Bacon** . . . . . Lb. **49c**



**FRESH TASTY**  
**BEEF LIVER** . . . . . Pound **39c**  
**YOUNG GRAIN FED BEEF**  
**POT ROAST** . . . . . Pound **33c**  
**OLD FASHIONED**  
**FRANKFURTERS** . . . . . Pound **43c**  
**OLD FASHIONED**  
**BEEF HEARTS** . . . . . Pound **29c**  
**LEAN MEATY**  
**SHORT RIBS** . . . . . Pound **19c**

**KITCHEN QUEEN FLOUR**  
25 Lbs. **1.87**

**COLUMBIA DILL PICKLES**  
Reg. or Kosher  
1/2 Gals. **53c**

Half Gallon **PURE X**  
**29c**

**WAX ROLLS**  
100 Feet **19c**

**ARMOUR'S TREET LUNCHEON MEAT**  
12-Oz. Tins **2/79c**  
WITH FREE PERFUME



**CAMPBELL'S TOMATO SOUP**  
**10c**

**FLORIDA INDIAN RIVER PINK GRAPEFRUIT**  
Thin Skinned - Full 'O Juice  
Large Size . . . . . 2 FOR **19c**

**SOLID RED RIPE TOMATOES** . . . . . 1-Lb. Ctn. **23c**

**FANCY LARGE SIZE ORANGES** . . . . . 5-Lb. Bag **49c**

**McDANIELS**  
**AIRPORT & CANYON ROAD**

*The Home of The Low Price*

Store Hours: 9:00 Till 9:00 — Sundays 9:00 Till 7:00

Lots Of Free Parking Space



PRICES EFFECTIVE

THURS., FRI. & SAT.

THIS WEEK



**TO BUY**  
**USE the**

**CLASSIFIED**

**OR SELL**  
**PAGES.**



**Announcements 1**

ANYONE INTERESTED in joining a weight watchers club, please call LE 7-7994. 1c39

STARTING the Clover Creek Riding and Recreation club; those interested in joining please call LE 7-7994. 1c39

**Business Service 3**

PHYSIOTHERAPY treatments in your own home; day or night; LE 7-7254. 3cft

GRAVEL — All sizes; top soil; leveling; weekend deliveries; LE 7-7291. 3cft

**HILL TOP GRAVEL CO.**

Puyallup TH 5-2198 for delivery or will load your truck. Pit at end of 23rd Ave. S.E. Puyallup.

Screened Rd. Gravel  
Crushed Rock - Top Soil - Drain Gravel  
6 Days a Week

KITCHEN CABINETS, corner shelves, book cases; birch, fir or knotty pine; built to your specifications; get the best for less—my prices are the lowest.

HOOVER'S CABINET SHOP.  
LE 7-5514. 3cft

**Midland Nursing Home**

10816 Portland Ave. LE 7-5395  
LICENSED NURSES ON DUTY 24-HOURS A DAY

TOP SOIL and fill dirt; crushed rock, Utah coal; LE 7-3536 or Puyallup TH 5-2038. 3cft

**Clogged Drains? Toilet Won't Flush?**

Just Call Us  
**Sanitary Septic Tank Pumping Service**  
TH 5-2873

RILEY'S APPLIANCE SERVICE—We repair electrical appliances—coffee pots, irons, mixers, heaters, etc. Call LE 7-0323. 3cft

**BULLDOZING**

Leveling, Back Fill, Clearing Fill Dirt, Top Soil, Ditching

**Manning & Smith**  
LE 7-3930

FOUNDATIONS, additions, remodeling. Free estimates. Financing, no down payment. Phone GR 4-7000 anytime. 3cft

**BULLDOZING**

Bank Run Gravel Water Lines Septic Tanks

Top Soil at Reduced Prices  
**Frank Reardon**  
LE 7-5758

DON'T encourage dishonesty; locks keyed, combinations changed; Parkland Cycle & Rep; 11009 Pacific Ave. LE 7-5772. 3cft

**ECONOMY Builders Supply**

Airport at Portland Ave.  
**LE 7-8591**  
BEST BUYS  
New Lumber and Used Building Supplies

**Home Wiring**

Free Estimates  
Guaranteed Satisfaction  
Emergency Service  
**PEARL ELECTRIC**  
LE 7-3563

'SMITH CABINET SHOP—Re-modeling, kitchen cabinets; we sell glass; 16309 S. Park, Spanaway; LE 7-7949. 3cft

FAST PHOTO SERVICE — In at 10:00 out at 5:00. QUALITY PHOTO SERVICE, 9818 Pacific Ave., LE 7-7271. 3cft

**FERN HILL BEAUTY SHOP**

COMPLETE BEAUTY SERVICE  
8237 1/2 Park Ave. GR 4-3177

SPANAWAY ELECTRIC—Con. tracting and appliances; free engineering service for electric heat; LE 7-7064. 3cft

**ACE-DIRT Moving Co.**

Bulldozing - Ditching  
TOP SOIL - GRAVEL  
SEPTIC TANKS and DRAIN FIELDS  
Phone TH 5-2452 3cft

BRICK & BLOCK WORK: fireplaces a specialty; LE 7-7428 3cft

**Parkland Heating Company**

We have almost any type of Furnace you want. Specializing in Williams Oil'O' Matic. Oil - Gas - Hot Water Parts for All Makes For Free Estimates call  
**LE 7-4045**

LAWNS MOWED reasonable; rotary or reel; Call Jerry; LE 7-3249. 3c40

**NEAT BEAUTY SHOP**

GEORGE PURDUE—Plumbing, Heating, New Work, Remodeling, Repairs. Phone LE 7-4477. 3cft

AERIFYING & FERTILIZING; give your lawn a treat; JU 8-2111. 3cft

**SEPTIC TANK CLEANING**

Prompt Service  
**C. V. Hutson**  
GR 4-3980 GR 2-7038

FOUNDATIONS—New additions; free estimates, financing; work guaranteed; GR 4-2002. 3cft

**LAWN MOWERS**

Serviced and Stored  
Power Mowers A Specialty  
Free Pick-up & Delivery  
**PARKLAND CYCLE & KEY**  
11009 Pacific Ave. LE 7-5772.

AUTO GLASS, Seat covers; upholstery & convertible tops installed. Open 9:00 a.m. to 1:00 p.m. Saturdays, ART'S GLASS & UPHOLSTERY SHOP, 816 So. Tacoma Ave. MA 7-2200. 3cft

RAY GOGAN Landscape Construction. Puyallup sandy loam top soil, new lawns; nothing down, 30 months to pay. LE 7-3127. 3cft

**WELL DRILLING**

**Berkeley Pumps**  
• JETS  
• SUBMERSIBLES  
• CENTRIFUGALS  
• TURBINES  
Call LE 7-7281

**Tacoma Pump & Well Drilling Co.**

Rt. 7, Box 316 Tacoma Trades

ROTOVATING & TRACTOR WORK; Rt. 3, Box 167, Tacoma Chesney-Etter Road). LE 7-7559 3cft

SEPTIC TANK PUMPING — Replace and repair work. 3 years to pay; JU 8-8734 - GR 4-5945. 3cft

SNAP ON TOOLS — Johnny Hall, 1012 South 110th, Lenox 1-0856. 3cft

**South End Auto Wreckers USED PARTS**

Motors - Transmissions  
Tires - Batteries  
We Buy Junk Cars  
Also Custom Welding by Joe's Welding  
1 Mile East Roy Y on Mt. Hy. Spanaway LE 7-6534

CUSTOM KILLING, poultry of all kinds; WA 2-6952. 3cft

HAY CUTTING, side delivery rake, plowing and discing, Baler available. LE 7-4444. 93rd and Vickery Road. 3cft

**ACE SEPTIC TANK SERVICE**

Septic Tanks Cleaned  
**O. B. ACKLEY**  
LE 7-4343 LE 7-7882

CANYON ROAD GRAVEL & SUPPLY; pick-ups and trailers loaded or we haul; LE 7-7586 3cft

PLOWING, rotovating, leveling, lawns; also hay mowing; R. D. Beeler; LE 7-4940. 3cft

SANDY LOAM top soil, 6 yards \$12; Buck, JU 8-3189. 3cft

ROTOVILLING — \$4.00 per hour LEnox 1-1755. 3cft

BRICK WORK — House leveling and foundations, retaining walls, sidewalk and patios, fireplace and stone work. LE 7-4291. 3cft

AVON PRODUCTS NOW TV ADVERTISED. Established territory now available in Parkland and Spanaway, for mature capable women. Immediate placement. Call MA 7-5271. 5c39

WOMEN 18-55, to address and mail our circulars at home on commission. Write GIFT FAIR, (Dept. 8), Springfield, Penna. 5p41

HIGH SCHOOL GIRL wants baby sitting job, 5 days a week; LE 7-7644. 14c39

MOTHERS working? Shopping? or an evening out? Child care in my home, conveniently located in the Parkland area; LE 7-3688. 14c39

HIGH SCHOOL GIRL — Baby sitting or mother's helper; LE 7-6772. 14c39

GIRL 17 wishes child care and light housekeeping. Reliable. LE 7-4657. 14c39

PRIVATE DRIVER training lessons; call LE 7-4495 any time. 14cft

WILL DO HOUSEWORK; also ironing in your home or mine; \$1 an hour; Belle Maulsby; LE 7-5398 or LE 7-7423. 14p39

WILL DO HOUSEWORK; also ironing in your home or mine; \$1 an hour; Belle Maulsby; LE 7-5398 or LE 7-7423. 14p39

**TRADE**

TWO five-acre tracts, with small houses. Owner will trade for Parkland or Spanaway property. Call Mr. Mitchell.

Homes in Parkland Communities; increase close in, either with or without buildings.  
**Bert Brown Realty**  
11220 Pacific Ave.  
Office—Days: LE 7-8695  
Evenings—WA 7-9221, GR 4-3315

FOR SALE — 2 lots, 50'x120', 86th and East I; \$300; call LE 7-8254. 9c39

2-BEDROOM modern home; buy equity and take over payments of \$45, includes taxes and insurance. For more information, call LE 7-4115. O. Campbell, 12323 West Pipeline Road. 9cft

Jennie L. Grodvig  
**Parkland Realty Co.**  
Insurance of All Kinds  
Notary Public  
Est. in Parkland Since 1941  
LE 7-8609 Office  
302 Garfield St., Parkland

"Deal with the people who give you their personal attention."

FOR SALE—6 acres, good buildings; close to school, church, shopping; 306 East 121st. 9p39

FOR RENT — 2-room furnished apartment in Parkland Centre Bldg.; \$50 including utilities; LEnox 1-0446. 10c39

FOR RENT — 1-bedroom partly furnished house on Waller Rd.; \$35 a month; call LE 7-6193. 10c39

**Repair Service 11**

WASHING MACHINE PARTS  
Largest stock in town. Repairing that pleases. B.B.'s Washer Service, 3727 So. G. GR 4-9409. 11cft

**Automotive 12**

'57 FORDS & CHEVROLETS; wholesale prices. SMALEY MOTORS, 10410 Pacific Ave., LE 7-4060 anytime, evenings, Sundays. 12cft

1956 NASH RAMBLER; auto, transmission, R & H; \$1650. ANDERSON CHEVRON, Spanaway, LE 7-6465. 12c39

**Evergreen Auto Sales**

51 FORD 2-Dr. R & H. Clean ..... \$445  
138th & Pac. Ave. LE 7-4772  
Open Sunday

**Work Wanted 14**

CHILD CARE, my home, while you shop, run errands, etc., LE 7-4402. 14cft

SEWING, Alterations, mending; reasonable; LE 7-5636. 14c40

HIGH SCHOOL GIRL wants baby sitting job, 5 days a week; LE 7-7644. 14c39

MOTHERS working? Shopping? or an evening out? Child care in my home, conveniently located in the Parkland area; LE 7-3688. 14c39

HIGH SCHOOL GIRL — Baby sitting or mother's helper; LE 7-6772. 14c39

GIRL 17 wishes child care and light housekeeping. Reliable. LE 7-4657. 14c39

PRIVATE DRIVER training lessons; call LE 7-4495 any time. 14cft

WILL DO HOUSEWORK; also ironing in your home or mine; \$1 an hour; Belle Maulsby; LE 7-5398 or LE 7-7423. 14p39

**Miscellaneous 15**

OIL FOR LESS if you live within 2 miles of our plant. Why pay more than 18c for stove oil in 100-gallon lots? LAPENSKI'S HOME OF CLEAN OILS, 9920 Pacific Ave., LE 7-8173. 15cft

• Wheel Balancing  
• Motor Tune-Ups  
• Headlight Adjusting  
**Airport Rocket Service**  
Airport Rd. Next to IGA Shopping Center

RIDING HORSES FOR RENT B & B RIDING ACADEMY Mt. Hiway at Loveland. LE 7-6377. 15c40

**FOR SALE**

6-foot picnic tables, built for rugged use \$16.50. Mt. Hiway Cabinet Shop, Graham VI 7-7638. 15c40

STATION WAGON OWNERS NOW you can buy a Custom built Kar-Rac you can be proud to put on your Station Wagon. Beautifully varnished, gives that "town & country" look. Positive clip and turn-buckle fastening secure your Kar-Rac. Easily handled by one person. Save \$40.00 per Rac. Orchard Hill Duplexes, office, 143rd & Pacific Ave. So., Phone LE 7-5194. 15p43

**TOOLE'S SAWMILL**

Rough or Finished Lumber  
Direct From Mill  
Graham, Wash. VI 7-2229

TACOMA UPHOLSTERY — Special on reupholstering day, enport, chair, as low as \$129. Davenos \$49.00; Rocker, \$29. Free estimates; GR 2-6955, LE 7-0327. 15cft

BATON TWIRLING classes, beginners and advanced, by Frank Schreck of Lewisburg, Pa., now in Tacoma area; if interested call MA 7-5559 Thursday or Saturday. 15cft

**WHOLESALE PRICES ON TIRES - BATTERIES - GAS FOR LESS - Dick's Richfield Service**

72nd & East "L" Street

BEAUTY FURNITURE, new and used, for sale or rent; SMALL FRY EXCHANGE 1109 Market St., BR 2-9505. 15cft

**Englander**

THE FINEST NAME IN SLEEP  
30 Day Free Trial  
20 Year Guarantee  
Goodyear Air Foam  
Famous Red-Line Foundation  
**Parkway Furniture**  
141st & Pac. Ave. LE 7-3941  
Open Till 9:00 p.m.

PARKLAND FURNITURE — New and used miscellaneous; Airport & Pacific Ave. Residence Phone LE 7-3748. 15cft

FOR SALE — 14'x70" wide beam boats \$275 unpainted; work guaranteed; Bantam Boat Co., 84th & Waller Rd. 15cft

**FOR RENT Riding Horses B & B Riding Academy**

Mt. Hiway LE 7-6377

FOR SALE — 2-man life raft with oars \$18; LE 7-5427. 15p39

VIOLEN LESSONS in Parkland or Tacoma; beginners accepted; Blanche Yorktheimer, MA 7-7861. 15c42

FOR SALE AKC REGISTERED Weimaraner puppies. Two and one half months, ready for training. Excellent for children's pets. 8501 Golden Given. LE 7-0331. 15c39

FOR SALE — Ayershire cow, new fresh 2 months; also Thor mangle; 306 East 121st. 15p39

FOR SALE — Three pieces radio and TV test equipment. O. Campbell, 12323 West Pipeline Road, LE 7-4115. 15cft

LOCKER BEEF, wholesale plus cutting and wrapping, also retail counter. Avenue Meats, 8204 Portland Avenue, LEnox 7-3570. 15cft

UNABLE TO PAY balance of \$29 on ELECTROLUX, like new; pay off at \$5 each month and get free home demonstration. UPTON ELECTRIC CO., 1148 Market St., FU 3-2551. 15c39

EVINRUDE MOTORS, Bryant boats, all models in stock. Also one used fast win-14 hrs. One used Clinton-4hrs. Both in excellent shape. Also wagon wheels for sale. Major Oil & Marine Supply, 7517 Portland Ave. LEnox 7-3644. 15c40

GOING THIS WEEKEND — Make offer! New Coldspot refrigerator, large Kenmore electric range; LE 7-8342. 15c39

FOR SALE — Large peking ducklings and extra large mixed goslings; Graham VI 7-7810. 15c40

**FOR SALE**

12-foot Birchcraft boat; 5 HP outboard motor; 8121 Golden Given Road after 5:00. 15c40

**Hot Water Heating Residential and Remodel Work CORNELL**

PLUMBING & HEATING LE 7-7293

USED BARGAINS  
BEDROOM set \$49; swing rockers \$18.75, \$22; vanity \$10; mattresses from \$7.50; crib, spring and mattress \$19.75; 6-ft. refrigerator \$39.50. Bargains always in new furniture. PARKWAY FURNITURE, 141st & Pacific Ave.; Open till 9:00; LE 7-3941. 15c39

FOR SALE — Real good light weight buckboard wagon; old lamp base; coffee table; rabbits; call Puyallup TH 5-5068. 15c39

FOR SALE — One blue panel bedstead, one large split-leaf philodendron; best offer for either item; 124 East 132nd, LE 1-1461. 15c39

SERGEANT got transferred and returned this Television set with only \$48 due. Take over at \$10 each month and it's yours. UPTON ELECTRIC CO., 1148 Market St., FU 3-2551. 15c39

FOR SALE — English lounge type davenport and chair, plum colored, innerspring cushions and back, good condition; \$40; LE 7-3168. 15p39

ANNOUNCING a new service in this area. Have your precious baby's shoes and souvenirs metalized to last a lifetime. All work guaranteed. Write or phone Tiny Tot Metalizing Co., P. O. Box 323 Spanaway, LE 7-7922. 15c41

MOVING, MUST SELL bedroom set; TV set; 11-cu. ft. refrigerator; chrome set; wood circulator; white enamel wood range. Guitar and amplifier, \$200 value, for \$125; LE 7-6701. 15c39

FOR SALE — White oak dining-room set, 8-ft. table, 6 chairs and buffet, \$30; Monarch automatic oven control electric range, \$20; hi-back kitchen sink, \$2; lavatory \$1.50, stool \$2; LE 7-7993. 15c39

FOR SALE — Deep freeze, refrigerator, china closet, desk and miscellaneous household items; Rt. 2, Box 546, Puyallup. 15p39

**FOR RENT Riding Horses B & B Riding Academy**

Mt. Hiway LE 7-6377

FOR SALE — 2-man life raft with oars \$18; LE 7-5427. 15p39

VIOLEN LESSONS in Parkland or Tacoma; beginners accepted; Blanche Yorktheimer, MA 7-7861. 15c42

FOR SALE AKC REGISTERED Weimaraner puppies. Two and one half months, ready for training. Excellent for children's pets. 8501 Golden Given. LE 7-0331. 15c39

FOR SALE — Ayershire cow, new fresh 2 months; also Thor mangle; 306 East 121st. 15p39

FOR SALE — Three pieces radio and TV test equipment. O. Campbell, 12323 West Pipeline Road, LE 7-4115. 15cft

LOCKER BEEF, wholesale plus cutting and wrapping, also retail counter. Avenue Meats, 8204 Portland Avenue, LEnox 7-3570. 15cft

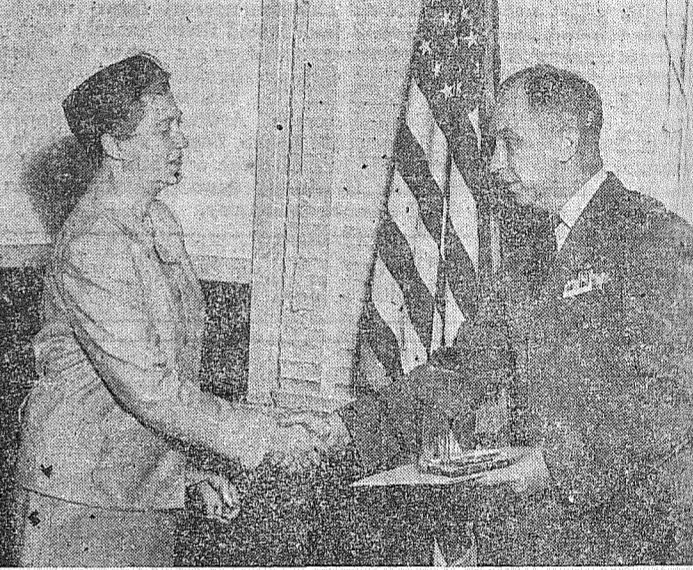
UNABLE TO PAY balance of \$29 on ELECTROLUX, like new; pay off at \$5 each month and get free home demonstration. UPTON ELECTRIC CO., 1148 Market St., FU 3-2551. 15c39

EVINRUDE MOTORS, Bryant boats, all models in stock. Also one used fast win-14 hrs. One used Clinton-4hrs. Both in excellent shape. Also wagon wheels for sale. Major Oil & Marine Supply, 7517 Portland Ave. LEnox 7-3644. 15c40

GOING THIS WEEKEND — Make offer! New Coldspot refrigerator, large Kenmore electric range; LE 7-8342. 15c39

FOR SALE — Large peking ducklings and extra large mixed goslings; Graham VI 7-7810. 15c40

**Commendation Ribbons, Medals**



ONE OF THE LAST official duties performed by Colonel Henry L. Crouch Jr., base commander, before he departed for a new assignment in England was the awarding of commendation medals and ribbons. In the top photo, Captain Robert E. Rowe, Adjutant and Personnel Staff Officer of Headquarters, 325th Fighter Group is decorated. Center, M/Sgt. Clyde Ellison, First Sergeant for the 317th FIS, received his award, and in the bottom picture, Mrs. Robert A. Scholton accepts the Commendation Ribbon for her husband, the late Major Scholton, who commanded the 325th Food Service Squadron.

**Legal**

KENDALL HALVORSEN  
Attorney  
217 Garfield St.  
Parkland, Washington  
In The Superior Court of the State of Washington in and for the County of Pierce.  
No. 132325  
SUMMONS BY PUBLICATION  
BETTY JANE MARTIN,  
Plaintiff  
vs.  
ELDRED LELAND MARTIN,  
Defendant.  
STATE OF WASHINGTON TO THE SAID ELDRED LELAND MARTIN, DEFENDANT:  
You are hereby summoned to appear within sixty (60) days after the date of the first publication of this summons, to wit, within sixty (60) days after the 23rd day of May, 1957, and defend the above-entitled action in the above-entitled court, and answer the complaint of the plaintiff, and serve a copy of your answer upon the undersigned attorney at his office below stated; and in case of your failure so to do, judgment will be rendered against you according to the demand of the complaint, which has been filed with the clerk of said court.  
That the cause of action herein is for a Decree of Divorce, on the grounds of cruelty, burdensome home life, non support, and neglect of supporting the family, and abandonment of over one year.  
KENDALL O. HALVORSEN  
Attorney for the plaintiff  
Office and Post Office Address:  
217 Garfield Street  
P.O. Box 2456  
Parkland Branch  
Tacoma 44, Washington  
Published in the Times-Journal May 23, 30; June 6, 13, 20, 27, 1957.

**HAY BALING**

Cutting and Raking  
For dependable work call  
**LENOX 7-3378**  
**JACK RANDES**  
Fredrickson

**Gordon Wold**

46 BUICK Sedanette, R & H, good condition. \$125.

# WESSON OIL . . . . . Quart 55¢ Bottle

KITCHEN QUEEN 10 LB. BAG  
**FLOUR 81¢**

HUNTS 5 NO. 300 CANS  
**FRUIT COCKTAIL 1.00**

CAMPBELLS 9 CANS  
**TOMATO SOUP 1.00**

**C & H SUGAR** POWDERED OR BROWN 2 1-Lb. Boxes **25¢**

MEADOWBROOK CUBED Lb.  
**BUTTER 69¢**

FACIAL TISSUE 400 Count  
**SCOTTIES 4/\$1**

ZEE - FAMILY PACK 4 Rolls  
**TISSUE 3/\$1**

**RED BAG COFFEE** Albertson's . . . . . Lb. **75¢**

EATON FROZEN Pkgs.  
**PEAS 3/49¢**

EATON FROZEN Pkgs.  
**FRIES 2/29¢**

MINUTE MAID 6-Oz. CANS  
**PINK LEMONADE 2/29¢**

**CUT UP CHICKENS** FOR STEWING OR FRICASSEE . . . . . Lb. **31¢**

**Ground BEEF** 3 Lbs. **99¢**

FILET OF RED Lb.  
**SNAPPER 25¢**

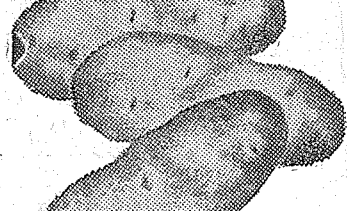
CALIFORNIA WHOLE Pound  
**Watermelon 5¢**

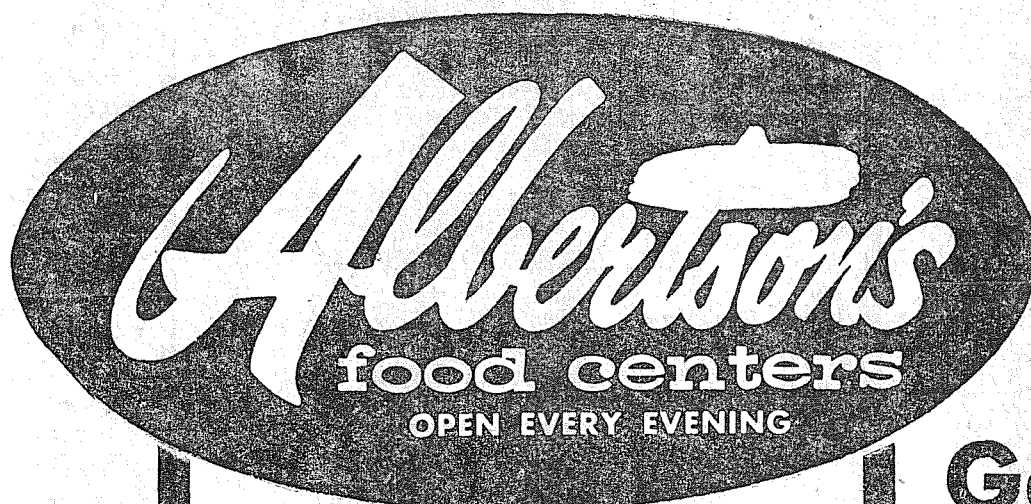
WE HAVE A FULL LINE OF  
PICNIC SUPPLIES  
INCLUDING CHARCOAL  
AND CHARCOAL LIGHTER

IRREGARDLESS OF OUR COM-  
PETITORS, AND IN CONSIDERATION  
OF THE SABBATH AND OUR  
EMPLOYEES

WE ARE **CLOSED SUNDAYS**

NEW WHITE SHAFTER

**POTATOES** . . . . . Lb. **2 1/2¢** 



2 STORES TO SERVE YOU  
• 6010 MT. TACOMA DRIVE, LAKEWOOD  
• 72ND AND PACIFIC AVENUE  
OPEN DAILY 9 TO 9 - CLOSED SUNDAY

**Radishes or Gr. Onions** FRESH LOCAL BUNCH **2¢**

ALBERTSON'S FRESH BAKERY PRODUCTS  
LEMON FILLED MARY ANN

**Gold Cake** 8 Inch Iced With Boiled Icing And Covered With Lemon Coconut! **99¢**  
**SHORTCAKES** **6/29¢**  
EACH . . .

## Day Camp Equipment Building Dedicated



**KIWANIS PROJECT** — Parkland Area Kiwanis club members were present for the dedication of the Spanaway Park Day Camp equipment building, held May 18 on Girl Scout Rally Day. Construction of the building for the Girl Scouts has been a project of the boys and girls committee of the Parkland Area Kiwanis club, with Lauri Lund chairman. Morris Ford, superintendent of Franklin Pierce school district No. 402, has arranged bus transportation during the Day Camp period. Taking part in the dedication ceremony, "Blessing of this house," were Mrs. Phillip Slayden, 2nd vice president, and Miss Lucy McAfee, executive director of the Tacoma Girl Scout Council, also Miss Bonnie Feintz, staff member. Girl Scouts taking part included Linda Betts, light bearer, and Sylvia Lund, food bearer (of Parkland) and Jerry Iverson of Spanaway, torch bearer. Dr. A. G. Nace and Tom Lantz of the Metropolitan Park board also assisted in the rites. Pictured above, left to right, are: Back row, Lauri Lund, Bob Hansler, Bob Richardson, Trav Dryer, Morris Ford, all Kiwanis club members; front row, Linda Betts, Sylvia Lund, Jerry Iverson and Mrs. Lauri Lund, Girl Scout District chairman. Mrs. Rufus Harvey, Day Camp director, and Mrs. Jack Erickson were unable to be present.

Bethel High School Photo

Page 6 Thursday, June 6, 1957  
The TIMES - JOURNAL

### Platter Chatter



by Mickey Hamlin  
"So Young" by Clyde Stacy is fast becoming one of the most

talked about records in this vicinity. The disk has a catchy opening, starting out with an interlude of dialogue between Clyde and his mystery girl friend. Not only does the opening draw attention, but the rhythmic background also does much to capture the listener's ear. In addition to these two fine qualifications, the lyrics, aimed primarily at the teen-age market, are delivered in a smooth subtle manner with the same definite beat blended throughout the record.

"So Young" is becoming one of the biggest hits locally and with sufficient Deejay plugging it could easily become an overnight sensation all over the nation.

**HALF-NOTES:** The Costers, of "One Kiss Led To Another" fame, are causing a lot of comment with their "Young Blood" backed with "Searching" . . . "A Fallen Star" is quickly becoming one of our most popular records, both in the country-western field and the popular area . . . The Platters' "My Dream," which is very similar to their golden disk version of "My Prayer," is backed with "I Wanna," a lively little bounce tune. "I Wanna" is the fifth tune they have released as a single from their The Platters, Volume I album . . . Look for Chris Connors' "Trust In Me" to be a fine successor to her very beautiful "I Miss You So," which is still very popular. \* \* \*

I hope you have enjoyed the first installment of PLATTER CHATTER. If you have any comments, we would be glad to receive them. Just drop a note to me, Mickey Hamlin, in care of the Times-Journal.

1957 PARKLAND ROUND-UP  
JUNE 7 - 8 - 9

**OPEN FOR BUSINESS**  
Drake's Shoe Repair  
8425 PACIFIC

**Every Sat. Night**  
SUNSET GARDENS  
BRESEMANN PARK  
**SPANAWAY LAKE**  
Dancing 9 till 2

Presenting . . .  
**JAY KANNEY**  
And His Trombone

10 MEN AND A GIRL  
VOCALS BY BUNNY CLARK

FREE  
● Mixer & Ice  
● Tables For Everyone  
● Reduced Prices  
After Midnight  
ENTERTAINERS DURING  
INTERMISSION  
(Adults Only)

**REGISTER NOW**  
For Summer Fibre Flower  
Classes  
Starting Second Week  
In June

**CERAMIC'S**  
BY VEE  
10215 Park LE 7-7293



## ...and time to start a Savings Account

June's the time of year when thousands of young couples begin married lives and face the problem of managing money together. A good first step is a savings account.

A savings account brings many benefits. Regular and systematic savings is an easy way to get that down payment on the house, buy home furnishings, meet hospital bills when the stork arrives—to name only a few. Remember, too, a savings account helps you establish your credit standing; and a reserve fund in savings is always there when you need it for emergencies.

Stop in tomorrow at your nearest branch of National Bank of Washington and open your savings account.



PARKLAND  
BRANCH

21 BANKING  
OFFICES

The Bank of Personal Service

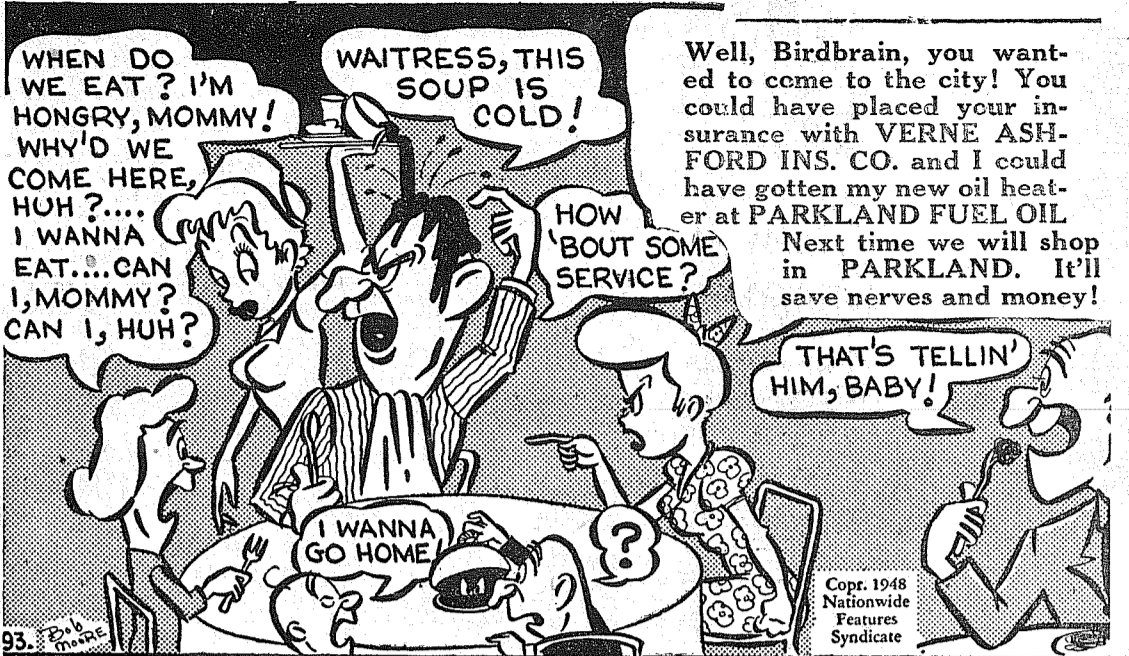
MEMBER FEDERAL DEPOSIT INSURANCE CORPORATION  
MEMBER FEDERAL RESERVE SYSTEM

## A HEARTY WESTERN WELCOME TO ALL

The entire committee of the Parkland Round-up take this opportunity to welcome you to the Seventh Annual Parkland Round-up. It is hoped that you will find fun, thrills and good fellowship in this friendly neighborhood event. We'll be seeing you!

- Johnny Bussanich
- Betty Anderson
- Bart Payne
- Ray Bartley
- Al Soine
- Art Wing
- Del Cheney
- Harry Wuestney
- Jack Clark
- Betty Baker
- Maurice Fletcher
- Bob Longren
- Jack Brown
- Buzz Carmel
- Bud Mathies
- Fred Sanderson
- Wes McKewen
- Bill Black
- Jim Loring
- Dona McKewen
- Archie Heany
- Connie Erickson
- Don Miller
- Trav Dryer
- Ken Jacobs
- Marge Betts
- Anz Grazzini
- Bill Adams
- Cliff Becklund
- Kent Erickson
- Morrie Anderson
- Larry Kirkwood
- Tom Scaranuzzo
- Veva McLaughlin
- Newt Willis
- Bill Bean
- Howie Snowden
- Gordie Loyer
- Frank Shephard
- Dick Sandquist
- Ted McMaken
- E. K. Dorwin
- Dolores Brown

## TOWN TALK SPONSORED BY THE PARKLAND BUSINESS CLUB



## SHOP PARKLAND FOR QUALITY AND SAVE . . .

**Big Prizes For Round-up Beard Growing Contest**

Growing a beard isn't much fun, according to a lot of fellows who entered the Round-up beard growing contest May 1. But, now after more than a month's vacation from the razor, several have acquired beards that might be classed as attractive, wild-and-wooly-western, or just stubble.

Be that as it may, more than a dozen will share in a big payoff Saturday night when the contestants will be judged at intermission time at the Parkland Round-up dance at Bresemann's Pavilion.

Prizes will be given for the following beards: longest, blackest, curliest, shaggiest, reddest; also oldest man with beard and youngest man with beard.

Anz Grazzini, Art Wing and Bud Mathies, contest co-chairmen, have assembled an imposing array of prizes, as follows: 7-Up ice cooler, anonymous; box of cigars, Service Tobacco Co.; radar lamp, Walt Olson Novelty Co.; fishing tackle box, O'Farrell Distributing Co.; Yardley men's gift set, Parkland Pharmacy; lube job and oil change, Beitz Service; four White King gift packs, Park 'n Shop Thriftway; Sportsman's Fancy Dan hunting knife, wrist compass and camper's axe with sheath, Shop-Ette Variety; Airborne mattress, Parkland Western Auto; generous supply of fresh meats; Ray Dugan; beautiful blanket, Shamrock Tavern; set of 6 beautiful gold embossed tumblers, anonymous.

The grand prize is a Father's Day (June 16) fishing trip to Westport, all expenses paid, or a check for \$25, from Heidelberg Brewing Co. The grand prize winner will also have his portrait made, free of charge, by McKewen Studio.

### Building Permits

Frank Lapenski, \$24,000 brick-veneer home, 9910 So. Pac. Ave. Vernon L. Hansen, \$8000 addition to home, 2815 E. 104th. Oscar Rasmussen, \$12,000 frame home, 515 So. 118th. Clyde Nichols, \$1200 home addition, Rt. No. 1, Box 290F, Spanaway; Paul D. Anderson, \$650 repairs to residence, 804 South 98th.

### Laboure Nursing Home

All on ground floor no wards, no steps. Cheerful surroundings, expert care, excellent food. Doctor referred. Aged & convalescents. 901 Tule Lake Rd. LE 7-7857

**Super-Kem-Tone**  
The washable LATEX wall paint

WE SELL & CUT GLASS  
**SOUTH END**  
Plumbing & Hdwe.  
LEnox 7-4100  
Near Roy Y. Spanaway

## TRUCKS FOR RENT

MA 7-9039  
Save One Half  
We Furnish Everything  
**HARMON'S**  
Driv-Ur-Self Co.  
HARMON'S SERVICE  
2112 Jefferson  
Jim Harmon, Mgr.

**JACOBS PACIFIC DRUGS**  
PRESCRIPTION SERVICE  
Open 7 Days A Week from 9:30 A.M. to 9:30 P.M.  
Walgreen Agency • Pay Light & Water Bills Here  
84th & Pacific Ave., HA 6445 Tacoma, Wash.

ANNOUNCING  
**ICE CYCLES OF 1957**  
WITH CAST OF 150  
JUNE 12 - 13 - 14 - 15  
and  
JUNE 19 - 20 - 21 - 22  
Shows Start - 8:00 p.m.  
Managed and Produced by  
**JOHN JOHNSON**  
All Seats Reserved  
Call JU 8-7000

**LAKWOOD WINTER CLUB**  
ON STEILACOOM LAKE OFF STEILACOOM BLVD.  
(Only a few minutes from the Base)

## Local Pair In Church Wedding

Evelyn Nadine Thieman and Melvin Mothershed were united in marriage Saturday, June 1, in the First Christian church of Sumner. Parents of the two are Mr. and Mrs. Ray Thieman and Mr. and Mrs. Elbert Mothershed. The young people will make their home in Auburn where Melvin is assistant manager of the J. C. Penny store.

Relatives who came for the wedding were Melvin's grandmother, Mrs. E. Mothershed of Raymond, Wash.; Mr. and Mrs. Charles Allen and Mr. and Mrs. Charles Sharon of Verona, Ore.; Mr. and Mrs. Charles Bond and Mr. and Mrs. Jim Bond of Weott, Calif.; and Bob Allen of Portland, Oregon.

**Visiting**  
Mrs. Harry Hanson of Maple Valley visited her sister, Mrs. John LaPore over the weekend.

**Best Wishes**  
Friends and neighbors wish a speedy recovery for Mrs. E. Robinson, who entered Doctors hospital Tuesday.

**Bible School**  
A Daily Vacation Bible school will be held in the Community church June 17 through 28 for all boys and girls of the area.  
Reporter — Katie Nelson, VI 7-7640.

A heavy cruiser produces 4,000 servings of bakery products per day for her crew.

**INTERURBAN AUTO FREIGHT INC.**  
3 Trips Daily  
To Parkland, Spanaway  
Summit, Midland  
GENERAL FREIGHT  
MA 7-4121

**Top Soil**  
Contains Peat and Barnyard Compost  
Ideal for Lawns and Gardens

**Lawn Seed**  
Lilly's Finest Mixes

**Fertilizer**  
All Popular Brands

**Peat Moss**  
For Mulching or Top Dressing

**Aerifying**  
Let's the air, water and fertilizer get to roots where needed. You will be amazed at the fast results.

**BRING US YOUR LAWN PROBLEMS**

FREE ESTIMATES ON —

Lawn Building  
Aerifying and Fertilizing  
Lawn Spraying with Liquid Fish

SPREADERS AND ROLLERS FREE  
- For One Day With Purchase -

WE DELIVER

**Coddigan FUEL & SEED CO.**

8630 SOUTH TACOMA WAY JU 8-2111  
TACOMA, WASHINGTON  
Quality Heating Oils

**Tacoma, Sumner, Puyallup & Graham phone numbers have changed**

HERE'S HOW TO DIAL A LOCAL CALL:

- 1 Look up the new number in your new directory before dialing.
- 2 Jot the number down so you will have it before you when you dial.
- 3 Dial the TWO letters and FIVE numbers carefully and completely.
- 4 For example, to dial the number Market 7-0556, dial the first TWO letters of Market; then the FIVE numbers 7-0-5-5-6.

**Pacific Telephone**  
Working to Make Your Telephone Service a Bigger Value in Washington

**CUT SILAGE FOR FEED VALUE, NOT TONNAGE**  
If you cut grass and clover at the proper time, you'll get more feed value from your forage, C.

**PIERCE COUNTY REFUSE CO.**  
Weekly Garbage Collections  
Phone LE 7-8683

**PRESCRIPTIONS CAREFULLY PREPARED**  
Fresh Insulin  
Downtown Prices  
Pay Phone Bills Here  
**Tincher's Pharmacy**  
8227 Park Ave. GR 4-8344  
Across from Fern Hill P.O.

R. Doran, county Extension agent, says. The value of silage is determined to a large extent by the time of cutting. If the crop gets too mature, you'll lose a lot of the leaves. This cuts down the yield, and more important, cuts down the feeding value. The leaves contain almost twice as much protein as the stems, and they are richer in vitamins and minerals. Most plants are higher in protein and total digestible nutrients (TDN) in the very immature stage. As a plant gets older, its protein content and feed value decreases, and the plant is less palatable to animals.

**FLETT DAIRY**  
FARM FRESH  
HOMOGENIZED AND  
PASTEURIZED MILK  
AND CREAM  
ICE CREAM  
Phone GR 2-3301

**Mountain View Food Lockers**  
CUSTOM MEAT CUTTING  
Locker Beef Available  
2519 East 112th LE 7-5332

Cut legumes such as Red, White, and Alsike clover at about three-fourths bloom. When grasses get too mature, they are stemmy and unpalatable, low in feed value and hard to make into good silage. Grasses too, tend to decrease in protein as they mature. Grasses cut before blooming usually have from 6 to 9 per cent protein. At maturity their protein content may fall to 3 per cent. So most grasses should be harvested before the bloom stage. With a grass and legume mixture, it is hard to harvest when both are at the optimum stage of maturity to produce the maximum tonnage and feed value. It's best to harvest when the predominating species is in the right stage of maturity, Doran advises. If you plan to use the field for

pasture or hay following the silage crop you should cut even a little ahead of these stages. This will help get the second crop started before the soil moisture gets too low.  
**WHY HOT WOOL MARKET?**  
What has occasioned the cur-

rent hot market for wool? George Purcell, county Extension agent, says wool growers who have been asking this question will be interested in this situation on the wool market from The Wall Street Journal: "Wool prices head higher,

raising fabric costs for next year's suits. Wool tops, priced by worsted cloth weavers, now bring about \$2 a pound in New York. That's 46 cents higher than last year and the costliest since 1954. Dealers say prices are apt to go higher. Last year's U. S. wool clip of 272 million pounds was down 2% from 1955, and this year's production is expected to be even lower. Wool men say there's a hotter scramble for the fleece than in any season since the Korean War. Most of this spring's clip was contracted while still on the sheep's back. A modest comeback of the woolen industry sparks demand. Per capita consumption

Thursday, June 6, 1957  
The TIMES - JOURNAL Page 7  
of apparel wool rose 12% to 1.9 foreign fleece. This could kick pounds last year, the first up-off still another cloth price hike." turn since 1950. Worsteds mills MANY JOBS AVAILABLE IN recently boosted cloth 10 to 15 AGRICULTURE FOR YOUTH cents a yard, but this probably How can we keep them down on won't affect suit-rack prices till the farm? This ago-old question has given way as the number of "Wool buyers may be forced commercial farms has decreased to bolster supplies with costlier (Continued on Page 8)

**Young Equestrienne Takes Jump**



UP AND OVER—Shown above is Miss Nancy Roberts, prominent local horsewoman, taking a high jump in last year's Horse Show. Many and varied are the events in this spring's show and the above picture is an excellent example of the class of the performers. The Horse Show starts at 7:00 p.m., Friday. Photo by McKewen

**General Sheet Metal Work**  
Special Equipment  
**RAU MFG. CO.**  
LEnox 7-7372

**VAUGHAN'S VALUES**  
FENCING - FENCING  
FENCING  
Material And Labor or Material Only - and "Do - It - Yourself"  
Free Estimates and Planning  
Ask About Our Monthly Pay Plan  
**Vaughan's**  
PACIFIC AVENUE LUMBER COMPANY  
84th & Pacific Avenue GR 4-9515



**HERE'S BIG BEAR'S PARADE OF VALUE!**



**STRAWBERRIES**

SERVE SHORTCAKE TONIGHT. A BUY!  
Home grown, fresh picked, large red berries. Firm, Ripe, Sweet and Luscious.

**2 FULL CUPS FOR 29**

**ROMAINE LETTUCE** Each Only **5**

Home grown garden fresh, crisp large heads!

**CAULIFLOWER** Large Head **10**

Local garden fresh solid compact heads!

**TOMATOES** **23**  
California Beefsteak variety, solid ripe and full flavored. You may choose your own at Big Bear!  
POUND

Now for the beginning of June Big Bear has this gigantic Parade of Values. Be sure to check this ad for all the really low prices, then come into our store, you'll find our shelves literally loaded with big values!

**CARNATION EVAPORATED CANNED MILK**

Nationally famous quality, now at an exceptionally low price! Excellent for baby's formula and easy cooking!

**3 Large Cans For Only 41**

**OCOMA'S FROZEN DINNERS**

Chicken, Beef, Turkey—each a complete dinner!

PER PKG.

**55**

**Fully - Cooked PICNICS**

SWIFT'S Premium, Full - cooked and table ready. Avg. 4 to 8 lbs.

POUND

**39**

**VEAL ROASTS, rump or leg** Per Lb. **67**

First of season milk-fed veal, good and choice!

**VEAL STEAKS, blade cuts** Per Lb. **59**

Deliciously tender and meaty, good and choice!

**VEAL & HAM LOAF** **39¢**  
Save on 2 pounds for only 75¢! Our own special mix, seasoned to perfection!  
POUND

**FROZEN ORANGE JUICE 8 6-Oz. Cans For 1.00**

PICTSWEET - Famous quality - and it's fresh frozen for full flavor. A concentrate of sweet, tree-ripened juice. Less than 13c a can when you buy 8!



**DUNGENESS CRAB MEAT**

What a buy! Harbor Bell brand, tender delicious crab meat ready to use in cocktail or tasty crab salad. Stock up and save!

No. 1/2 Tins For **49**

**MONEY-SAVING OFFER!**

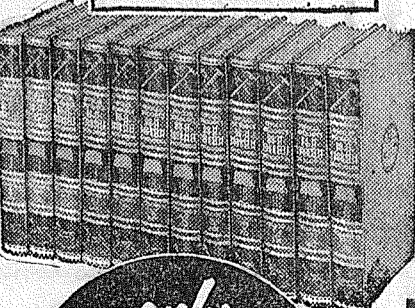
**THE WORLD FAMOUS 12-VOLUME**

**VOL. 5 & 6 NOW ON SALE!**

**POPULAR MECHANICS**

**DO-IT-YOURSELF ENCYCLOPEDIA**

PACKED WITH THOUSANDS OF PHOTOS, PLANS, ILLUSTRATIONS Over 9,000 Cross-indexed Entries



**only 99¢**

**POTATO CHIPS**

BLUE BELL—Large, tender potato chips, golden crisp and salted just right. It's potato chip time—and as always, you find the best buys at Big Bear!

39c BAG

**33¢**

**3-BEE HONEY**

A real bargain! Here's a big, long-lasting 5 pound pail of pure honey, amber clear and deliciously smooth—and it's sold for less at Big Bear Stores!

5 LB. PAIL

**89¢**

183rd & Pacific. Open 8 a.m. to 11 p.m. daily, closed Sundays. Prices Wed. noon thru Sat. Limit.



**BIG BEAR**

WHERE BETTER FOODS COST LESS!

**BIG BEAR STORES**

**WESSON'S FAMOUS SALAD OIL**

The perfect all-around oil! Wonderful for cooking and in salads!

QUART

**51**

# The TIMES JOURNAL

ADDRESS P. O. BOX 2008, PARKLAND, WASHINGTON  
119th and Pacific Avenue Phone LEnox 7-0223

JACK BROWN... PUBLISHER  
NEVA T. HONEYWELL... EDITOR  
BOB WARREN... ADV. MNGR.  
ESTHER GODDARD... ADVERTISING  
LOUIS SPRY... SPORTS EDITOR  
KENNETH POTTLE... SHOP SUPERINTENDENT  
WES McKEWEN... PHOTOGRAPHER

Qualified as a Legal Publication under Chapter 213 of the Legislative Acts of the 1941 Regular Session of the State of Wash.  
Delivered free by U. S. Mail to all homes in the trade territory. Paid subscriptions elsewhere!

In Wash. State \$2.50 per year; outside the state, \$3.00 per year.  
ADVERTISING RATES ON REQUEST

## County Agent News

(Continued from Page 7)  
ed and the number of off-farm employment opportunities in agriculture has increased.

C. R. Doran, county Extension agent, said today there are about 1.6 million fewer commercial farms today than there were 25 years ago. Family farms still account for about 95 per cent of all commercial farms and produce two-third of all farm out-put.

On a national average there are now 168 young farm men to replace every 100 farmers who die or reach retirement age. As a result, almost 40 per cent of the boys now growing up on farms are expected to seek employment off the farm when they reach manhood.

Many new positions are available for these young men. There will be two jobs waiting this year for almost every graduate in agriculture from our land-grant universities and colleges. Some 8,500 students are expected to graduate. There are about 15,000 job openings for them in field related to agriculture, farm services and others.

Many jobs are available also for those who don't have a college education. They include work in industry, trucking, artificial breeding, repair and servicing of farm machinery, fruit spraying, airplane dusting, and many other fields.

More detailed information on careers in agriculture is available at the county Extension office, Doran says.

## Waller Road Grange To Mark Father's Day

Betty Howard, lecturer for the Waller Road Grange, will present a Father's Day program at the meeting Friday, June 7, at 8:00 p.m. The Dads of the Grange are asked by Mrs. Howard to be present. Special honors will be awarded; bring your wives, also.

**School Picnic**  
The sound of merriment was in

the air in the vicinity of the Waller Road school last Friday, May 31, when parents and friends turned out in full force to help make the day a successful venture and a day to be remembered by the school pupils.

Sponsored by the P-TA members and supported by the community, the "last day of school" picnic was attended by over 325 persons. Mrs. Hager, picnic chairman, wishes to thank all who helped make it such a success.

Following the picnic lunch, a track meet was held in a competition area roped off by A. H. DeMeerleer.

A cashier's check for a sizeable amount was presented to Carl Anderson by the school principal, Mrs. Florence Martin, "in appreciation for work well done throughout the many years as custodian of Waller Road school." The card which accompanied the check was signed by the Waller Road P-TA, Waller Road Grange, Evergreen Baptist church, 4-H Boys, 4-H Girls, 4-H Lassies, Boy Scout Troop No. 23 and the school faculty and students.

Reporter — Mrs. Verne Fogle, LEnox 7-5210.

The Navy delivered a hundred million pounds of cargo to the Antarctic during Operation Deepfreeze.

**Trovani's Junior Bootery**  
LAKEWOOD CENTER JU 8-4181  
Specializing in Children's Shoes  
706 St. HELEN'S AVE. MA 7-6318

**LOOK**  
1x8 No. 4 100 Ft. SHIPLAP ..... \$3.90  
1x6 No. 5 100 Ft. V RUSTIC SIDING ..... \$6.50

DROP IN AND SEE OUR NICE SELECTION OF GARDEN EQUIPMENT

PAINT - GLASS - HDWR. & ELECTRICAL SUPPLIES

**BASKETT LUMBER CO.**  
MILL & RETAIL YARD  
97th and Portland Avenue  
LEnox 7-5844

**RURAL GARBAGE SERVICE**  
Serving Parkland, Lakewood, Midland, Summit, Spanaway & Lakeview  
Pierce County Permit  
LE 7-8688

**GLASS HOME SERVICE**  
OUR SPECIALTY  
Also Commercial Installations  
**DEAN'S GLASS**  
18021 Pacific LE 7-5661

## Mrs. S. E. Bland Wins Sewing Machine

MRS. S. E. BLAND, 11824 Waller Road, Tacoma, is the receiver of a Nechi sewing machine valued at \$239.00, awarded by the Lakewood Necchi-Elna Company and sponsored by the I.G.A. Foodtown Grocery store on Airport Road. Mrs. Bland, laid up by the Flu, received the machine on a single ticket made out by her husband when he undertook to do the shopping. "Be sure" she told him, "to put a ticket in the box for the sewing machine... we can use it". Sure enough he did, and he not only brought home the bacon but the sewing machine to boot. Mr. Bland is a cattle buyer. The family have lived in Tacoma for the past 50 years.

# ALL ABOARD FOR REAL EATING PLEASURE!

**BREAKFAST LUNCH DINNER**

**SHOP PIGGLY WIGGLY**

**MAXWELL HOUSE INST. COFFEE** 6-Oz. Jar **1.23**

**GENTENNIAL 10 LB. BAG FLOUR** **93¢**

**MEAT PIES** VAN VALINS CHICKEN TURKEY BEEF

**2 6-OZ. PIES 39¢**

**BUTTER** AA SWEET CREAM MEADOWBROOK QUARTERS... LB. **69¢**

**Angel Food** DUNCAN HINES CAKE MIX PKG. **39¢**

**LARGE "A" RANCH EGGS**

**COFFEE** HILLS BROS. 2 LB. CAN **1.79**

**MORTON'S FRUIT PIES** APPLE, PEACH CHERRY BOYSENBERRY 24-OZ. PIES Each... **49¢**

**DOZ. 37¢**

**HUNT'S TOMATO JUICE**... 4 46 OZ. **99¢**

**BONNIE DOG FOOD**... 2 NO. 1 CANS **25¢**

**CRISCO SHORTENING**... 3 LB. CAN **93¢**

**DOG-E-STU**... 2 NO. 1 CANS **31¢**

**PLYMOUTH MARGARINE** 2 LBS. **39¢**

**KLONDIKE WHOLE WATERMELON**... LB. **5 1/2¢**

**POTATOES**... lb. **3c**

**CUCUMBERS**... each **5c**

**LIPTON'S SOUPS**

**ONION or BEEF VEGETABLE**... 2/35c

**NOODLE or TOMATO VEGETABLE** 39c

**GREEN PEA**... 2/29c

**Morning BAKERY**

**DATE COFFEE ROLLS** 4/35c

Devils Food Chocolate Chip Icing, Mocha, White with Pineapple Cream Icing, Reg. \$1.00, Special

**2 LAYER CAKES**... 93c

Regular 59c Special

**DANISH ALMOND COFFEE CAKE** . 55c

**KIDS!** Piggly Wiggly, Carsten's Hygrade Baseball Special. Come and get your baseball autographed and a picture autographed of Kewpie Dick Barrett. 10:30 to 11:30 at Parkland; 1-2, South Tacoma; 2:30 to 3:30 Puyallup, Friday, June 7.

**CARSTEN'S HYGRADE PICNICS** Smoked Ready To Eat. 6 To 8 Lb. Average. Cryovac Wrapped... LB. **35¢**

**BOLOGNA POLISH LIVER RINGS** 12-Oz. Each **2 for 79¢**

**CARSTEN'S PORTER BRAND SLICED BACON**... Lb. Pkg. **49c**

**FRESH LEAN - GROUND HOURLY GROUND BEEF**... Pound **39c**

**GRAIN FED LEAN PORK SALE**

Center Cut Shoulder Lb. **39c** Fresh Lean Country Style Lb. **35c**

**PORK ROAST**... Lb. **49c** **PORK SAUSAGE**... Lb. **23c**

Lean Blade Cut Lb. **49c** **FRESH PORK HOCKS**... Lb. **23c**

# JOHNSON DRUGS

(WALGREEN AGENCY)

**GREETING CARDS - GLASSWARE - STATIONERY JEWELRY - COSMETICS - LUNCHES - CAMERS**

WE'VE MODERNIZED THINGS UP A MITE since the days of the Apothecaries. Now days you get real service in a drug store such as ours. Our crew of efficient men and women are happy to serve you and each has a keen sense of community responsibility. Ray, Dorothy, JoAnne, Florence, Ada, Webb and Jack are busting out all over with the western spirit of the PARKLAND ROUND-UP and invite you to drop in anytime and enjoy our genuine western hospitality.

**DAD'LL BUST A BUTTON WHEN HE GETS YOUR AMERICAN GREETING**

**FATHER'S DAY CARD**

**TO REMEMBER SOMEONE TOO NICE TO FORGET (FATHER'S DAY IS JUNE 16)**

**PRESCRIPTIONS FILLED CAREFULLY - PROMPTLY**

STORE HOURS: DAILY 9:00 A.M. TO 10:00 P.M. — SUNDAYS 12 NOON TO 8:00 P.M.

Prices Effective June 6 - 7 - 8  
We Reserve the Right to Limit Sales

**CUT RITE WAX PAPER** 125' Roll **27¢**

**PIGGLY WIGGLY**

PACIFIC AT GARFIELD IN PARKLAND



# Spanaway Downs Edgewood, 14-11 For Second Straight Valley Win

SECOND SECTION

## The TIMES JOURNAL

THURSDAY, JUNE 6, 1957 • Volume 12, No. 39 PAGE 9 PUBLISHED AT PARKLAND, WASH. Granite 0223

### Fishing Booklets Out

Sport fishing regulations for 1957 for food fish and shellfish, including salmon, have been published by the Department of Fisheries.

Copies are being distributed through boathouses, resorts and sporting goods stores. Requests for the booklet will also be filled at the Department of Fisheries, General Administration Building, Olympia, or at the Seattle office at 4015 20th Avenue West.

1957 PARKLAND ROUND-UP  
JUNE 7-8-9

### AL GUYS Sporting Goods

Welcomes  
You All To  
**THE PARKLAND  
ROUND-UP**  
96th & PACIFIC AVENUE

### Cardinal Athletes Receive Letters

Twenty-four letters were awarded to seventeen athletes at the Franklin-Pierce Junior High award assembly last week.

Twelve basketball and twelve track letters were given out.

Double winners were Ken Southall, Rick Smidt, Jim Mancuso, Gary Rhetrick, Terry Brink, Bob Maxfield and LeRoy Abelson.

The Junior Cardinals won the Puget Sound title in football, basketball and track during the recent school year.

### Custom Built Cabinets & Store Fixtures

We Install  
Free Estimates  
**R H O N E ' S  
CABINET SHOP**  
So. 161st St. GR 3342  
Spanaway

### GOLF NEWS Fromm To Pitch Javelin at 'Diego

The Parkland Junior Chamber of Commerce is sponsoring a Junior Golf Tournament to be held at the College Golf Course, June 11. Tee off time is 1 p. m.

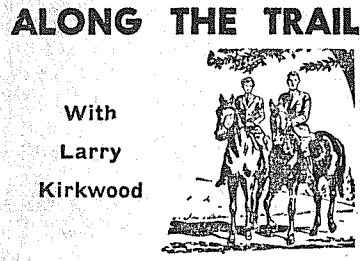
Contestants are asked to sign up at the College Golf Club, or contact Newt Willis at LE 7-8624 or Joe Greco at LE 7-8559.

The State Tournament for the winners will be held in Kirkland on June 17 and 18.

The National Tournament will award scholarships and valuable trophies to the winners. The National Tourney will be held on the U. of Ohio campus, August 19 through 24.

Preceding the local tournament will be a picnic lunch sponsored by the Junior Chamber of Commerce Auxiliary. Boys under 18 may have a practice round on June 10.

### ALONG THE TRAIL



With  
Larry  
Kirkwood

At last this is the big week when everyone dons western clothes, the men let their whiskers grow and everyone has fun—the week of the Parkland Round-up.

In connection with the Round-up the Pierce County Posse will sponsor a show to be held Friday night, June 7, beginning at 7:00 p. m. at the rodeo grounds.

All of you know who attended the horse show last year know that it was a very good show so be sure not to miss this one.

The show will open with the Tacoma Lariettes presenting colors and the introduction of the Roundup Queen and her court.

We hear rumors that there may be a visiting posse drill team also.

Classes are as follows: Western pleasure; western equitation, 11 through 13, 14 through 17; campers' special; scurry by pairs; team pole bending; barrel reining; pony express; pole bending, individual; cow hide race. The western pleasure class and equitation classes will be pre-judged at 4:30 p. m. There will be ribbons and trophies in all classes.

The general chairman of this show is Leo Balistreri with Marie Palin as judge; Wes Moak, games judge; Jim Topping, ring master; Larry Kirkwood, Dorene Riehl, announcers; Pat Topping, announcer's secretary. All of the other members of the Pierce County Posse will assist with the show.

Let's all get civic minded and support our Parkland Roundup horse show. See you all there.

A very successful show was held by the Parkland Riding Club juniors at their grounds back of the La Pergola Inn Sunday. High point winner for the day was Virginia Gunstrom, with Lorinda Lindbeck and Robin Ross third. Congratulations, kids!

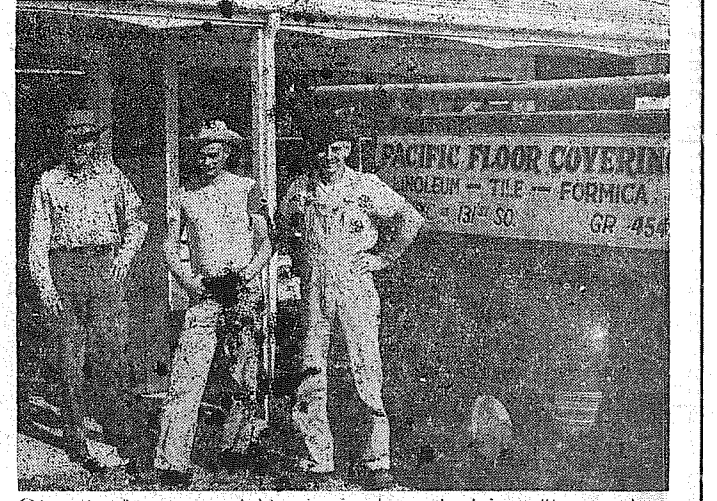
Along the trail we saw Char Crossman riding Margaret Scinto's pretty little quarter horse... Tex Dowling copping a third place in stock horse class at Clearbrook on Sunshine's Mischievous... the Parkland Roundup princesses being judged Saturday to determine who will reign Queen of the Roundup... Bud May's horse, Queenie with a little filly colt...

Send your news items to Larry's Mt. View Cleaners, 11903 Pacific Avenue, LE 7-3261.

Bellingham\* .....214'  
Evergreen Conf.\* .....231' 5"  
NAIA District\* .....229' 5"  
\*—New field record.

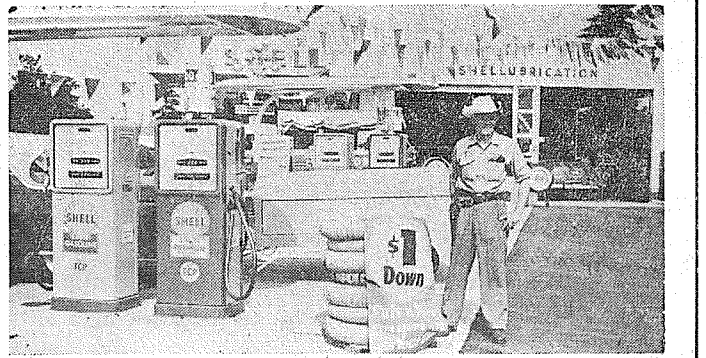
Eastern Division		W	L	Pct.	ton, Howard Wissinger and Don	Wissinger, lb	4	2	2	7	0	0
Spanaway	2	0	1.000		Anderle. Herm Laviola's double	Mitton, p	0	0	0	0	0	0
South Prairie	2	0	1.000		followed and three runs were in	McCoy, p	4	1	1	0	2	0
Lacamas	1	1	.500		in the inning before Thiel could	Totals	42	11	17	24	11	6
Orting	1	1	.500		get out of it.	Spanaway	AB	R	HO	A	E	
Puyallup	0	2	.000		Four errors by Edgewood gave	Jones, 2b	4	1	1	1	0	0
Edgewood	0	2	.000		Spanaway three unearned runs	Hansch, cf	2	1	1	2	0	0
<b>Sunday's Schedule</b> Orting at South Prairie. Lacamas at Spanaway. Puyallup vs. Edgewood.												
Western Division		W	L	Pct.	er. Thiel got Anderle on a fly	Brammer, 1b	4	3	2	4	2	1
Nalley's	1	0	1.000		Kinsley, but an error and Phelps	Ketter, rf	3	2	2	1	0	0
Kiwanis	1	0	1.000		Johnson's single put him in hot	Burlew, rf	0	0	0	0	0	0
Stanley's	1	0	1.000		water again. Haslam popped out,	Billings, lf	3	1	2	2	1	1
18 Vets	0	1	.000		but Phelps tripled scoring La-	Byrd, c	4	1	1	7	1	1
Lakewood	0	1	.000		viola and Johnson, whereupon	Thiel, p	5	1	1	1	0	0
St. Paul's	0	1	.000		Manager Dave Harkness removed	Brewer, p	0	0	0	0	0	0
<b>Results Sunday</b> Nalley's 13, Lakewood 5. Kiwanis 11, 18 Vets 10. Stanley's 10, St. Paul's 5 (13 innings).												
Sunday's Schedule												
Kiwanis vs. Nalley's. Lakewood vs. Stanley's. St. Paul's vs. 18 Vets. Spanaway outslugged Edge- wood, 14-11, for its "second" straight Valley League win last Sunday at Spanaway.												
Art Thiel was the winner al- though he needed help from Bob Brewer in the ninth. In other Eastern Division games, South Prairie kept pace with Spanaway by defeating La- camas, 7-2, and Orting won its first of the year, 12-5, over Puy- allup.												
In the opening games of the Western Division, Nalley's swamped Lakewood Merchants, 13-5, Kiwanis edged the 18 Vets, 11-10, and Stanley's won a thir- teen inning contest from St. Paul's Lumbermen, 10-5.												
Spanaway got rid of Edgewood starter Bob Mitton in the first inning. Mitton failed to get a man out and Al McCoy came in from the bullpen to finish up. A pair of walks and singles by Wally Jones, Dick Hansch, Ray Brammer, Andy Ketter and Art Thiel accounted for the six Span- away runs in the first. Edgewood scored two in the second and one in the third to make it 6-3 Spanaway after four frames.												
In the Spanaway fifth, singles by Darrell Billings, Chink Byrd and Jimmy Olson, together with a walk, an error and a sacrifice fly by Jones put Spanaway up 9-3. Billings' two-run single in the sixth gave Spanaway a seem- ingly comfortable 11-3 lead. Thiel weakened in the seventh and yielded singles to Don Sut-												

Pitching Summary		W	L	IP	SO	EA
Thiel	8 1/3	17	11	8	6	1
Brewer	2/3	0	0	0	1	0
Mitton	0	4	6	6	2	2
McCoy	8	7	8	2	4	13
RBI—Jones, Olson, Howard, Brammer 2, Ketter, Billings 2, Laviola, Johnson, Sutton 2, Wissinger, McCoy 2. 2B—Laviola, Johnson, c. 5 1 2 5 2 3 Holmquist, 2B—Whitehead, rf 4 0 0 1 0 0 Phelps, HR—McCoy. SB—Brammer, lf 1 0 0 0 0 0 mer. SF—Jones. DP—Howard to Phelps, ss 5 2 2 0 4 1 Brammer. Left — Edgewood 5, Holmquist, cf 5 1 3 2 0 0 Spanaway 10. WP—McCoy, PB—Sutton, lf 3 0 3 1 0 0 Johnson 2. HB—McCoy. W—Stone, lf 2 1 0 0 0 0 Thiel. L—Mitton. U—Herron.						



Chuck, Marv and Ernie just pulled in after a day out laying that new fangled tile on the floor for some of the homesteaders in these parts. Connie's horse threw a shoe so he didn't make it in time for this picture.

**PACIFIC FLOOR COVERING**  
LINOLEUM - TILE - SHADES  
13023 Pacific Avenue LEnox 7-4545



Bob's rarin to fill your buckboard with go juice and can reshoe your rig too, while you wait. If you want to meet a real friendly paleface during the Parkland Round-up, stop in.

**BOB AVITT'S SHELL SERVICE**  
133rd & Pacific Ave. Parkland

### Save A Life HURRY! HURRY!

There's Still Time To Have Your Radio Repaired So That You Can Enjoy The Parkland Round-up Parade and Rodeo in your own home.

**BIXBY  
TV - RADIO**  
12503 Waller Road  
Call LEnox 7-8309

Place	Distance
Pullman*	217'
Willamette	214'
Parkland*	222'
Fort Lewis*	215'
Drake Relays*	232'
Ellensburg*	234' 11"
Parkland	206'

**EARL and EVA**  
Said they want you all to ride up for the finest in "Horseless Carriage" service and repair.

Howdy and Welcome!  
**MULL'S GARAGE & SERVICE**  
10005 Pacific Avenue

### HEAD'IN FOR The ROUND-UP

If it's been a long ride and a dusty trail, stop by and rest a spell! JOHN & JEAN have the cure for a dusty throat. Cool and refreshing beer or your favorite wine.

**Haven's Tavern**  
126TH & PACIFIC AVENUE

### YIPPEEE! RODEO Time!

We Extend a Warm Welcome To All Contestants and Guests

Look your western best for the PARKLAND ROUND-UP in an outfit from "The BUNKHOUSE".

COME IN PARDNER! Look around. Bring your Buddy in too, we have lots of top brand merchandise for your selection!

- |                           |                                      |
|---------------------------|--------------------------------------|
| Bailey U-Roll-It Hats     | Miller, H-C. Tem-Tex Shirts          |
| Donboy Western Hats       | Circle "S" Jackets                   |
| Hyer-Justin-Frye Boots    | Painted Desert, Thunderbird Fashions |
| Moccasins and Squaw Boots | Tex-Tan Saddles                      |
| H-C Ranch Wear            | Bridles, Halters,                    |
| Lee Riders                | Bits, Spurs, Lariets.                |

Your Only Exclusive Western Shop in Western Washington!

**the BUNKHOUSE**  
LOCATED IN THE PARKLAND THEATRE BUILDING  
Phone LEnox 7-5510



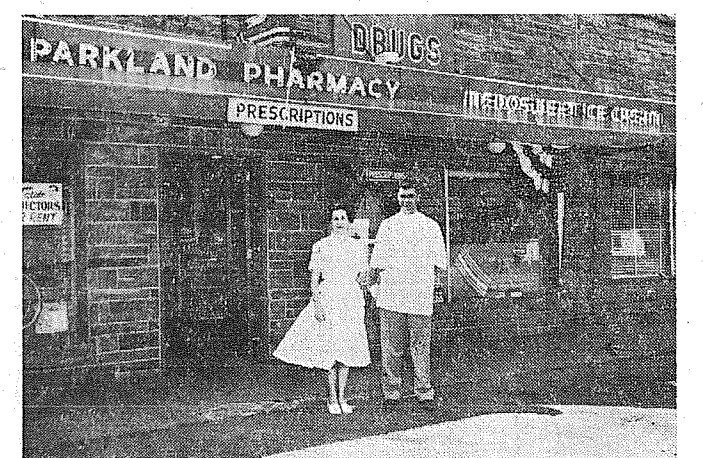
HOLD IT PARDNER! Don't head back for the open range without stocking your grub sack at the IGA Trading Post. Couldn't round up all the crew but here's the monikers of the dudes in the picture. Left to right: Tex Delaney, Pete DeMartino, Bob Williams, Phil Pete and Cliff Hatch.

**IGA FOODTOWN**  
112TH & PARK AVENUE



Lloyd's all set to take care of your travelin problems when you hit the trail to the Parkland Round-up this cummin weekend. If you happen by this way drop in fer a spell.

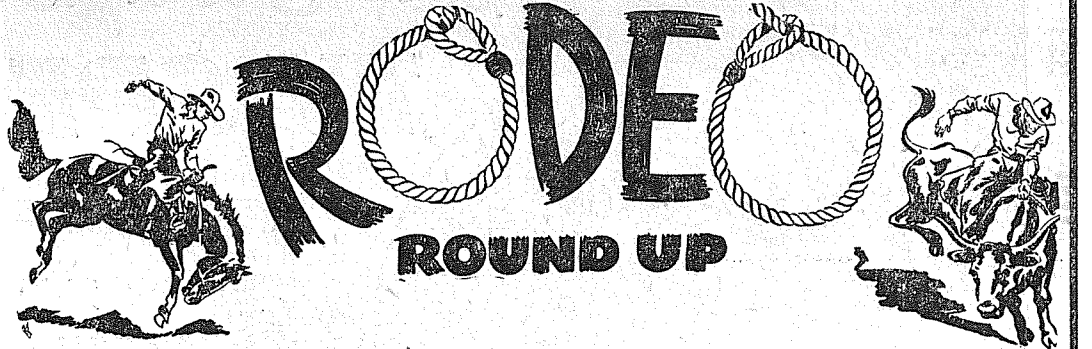
**Gunderson's Flying A Service**  
133rd & Pacific Ave., Parkland LEnox 7-9910



Lavaughn & Bob along with Madge and the other two Bobs... don't have a travelin medicine show; they got themselves a permanent store now. All you nesters and homesteaders kin put yer confidence in them to carefully compound your prescription jest the way the travelin Doc orders them.

**PARKLAND PHARMACY**  
Pacific & Airport LEnox 7-8636

### HOWDY & WELCOME TO THE 7th ANNUAL PARKLAND



VERNE SEZ: Insure yourself of a good time by visiting Parkland this week end.  
**VERNE ASHFORD INSURANCE AGENCY**  
LEnox 7-8647 119th & PACIFIC AVENUE

LARRY SEZ: You'll clean up on the fun in clothes expertly cleaned by...  
**MOUNTAIN VIEW CLEANERS**  
LEnox 7-3261



Here's A Rip Roarin Welcome To The Parkland Round-up from Claudia, Norma, Sonja, Betty and Virginia. When you ride by, headin for the rodeo grounds, stop in and chat a spell with ole Horse-thief Art, the congenial boss of this outfit. You'll find Art right accomodafin. Ifn he don't have what yer alookin fer he'll shore git in fer you pronto.

**SHOP-ETTE VARIETY** (Next Door to "Big Bear")  
Open Daily 10:00 A.M. to 9:00 P.M. — CLOSED SUNDAYS

### SEWING CIRCLE To Tacoma Meet

On Tuesday, May 28, the ladies of the Community Sewing Circle met at the home of Mrs. Bess Hadley in Tacoma. There were 10 members and two visitors present. They tied another comforter and at noon enjoyed a delightful potluck lunch.

It's strawberry season, a busy time for many of the members, so they will not meet June 11; instead, they will meet with Mrs. Pearl Engel in Elbe on the following meeting date, June 25. They decided to bring sack lunches that day, thus saving time so they can catch up on the extra sewing on hand.

**Memorial Services**  
A capacity crowd filled the little church Sunday, May 26, for the memorial services of the Odd Fellows, Rebekahs, Junior Odd Fellows and Theta Rho Girls. The Rev. John Christensen of Tacoma was the speaker for the interesting program.

Mr. and Mrs. Casey Swanson

and Mr. and Mrs. Pete Fredericksen have given their homes a new look with a fresh coat of paint the past week. It is wonderful what a change a paint job makes.

**New Daughter**  
Mr. and Mrs. Gene Crawford have a new daughter, born at the Morton hospital June 1. Grandma Fredericksen is caring for the older children until Mrs. Fredericksen returns home.

**Visitors**  
Mr. and Mrs. Ray Kalles of Puyallup were guests of the Ray Engels the past week.

**Memorial Day Trip**  
Mrs. Bud Kelly and children, Mrs. Neil Smith and children and Patty Bernard visited both the Morton cemetery and the Puyallup cemetery on Memorial Day. They stopped at Wildwood park, Puyallup, for a picnic lunch.

**Birthdays**  
Celebrating the 11th birthday of Neva Donville, 14 girl friends gathered at her home for a delicious dinner May 31.

Little Joanne Bloom, daughter of Mr. and Mrs. Frank Bloom, also had a birthday May 31 and many of her little friends came to help her celebrate her sixth

### Round-up Dance At Bresemann's Saturday Night

With Ray Bartley and Dona McEwen as co-chairmen, the big 1957 Round-up dance will be held in Bresemann's Pavilion at Spanaway Saturday evening, June 8, beginning at 9:00 o'clock.

Western clothes will be the favored garb and old time dances will share the honors with modern steps and square dancing.

Ray Bartley's Western Rhythmers will provide the music.

During intermission, winners in the beard growing contest will be selected by the judges, many handsome and valuable prizes being awarded.

**Good News**  
Friends will be glad to learn that Mrs. Al Reber is home from Tacoma General hospital, convalescing from injuries sustained in a fall Easter Sunday. She spent several weeks in the hospital with a fractured knee last fall so has had more than her share of misfortunes.

Reporter—Mrs. Pearl E. Engel, Elbe.

### Elk Plain News

Keep June 16 in mind—that is the date for a Strawberry Festival at the Elk Plain Grange hall, with the Auxiliary in charge.

**Shower**  
A bridal shower honoring Miss Millie Felkind was given by Mrs. Jim Sartain and Mrs. Bob Jupiter at the Jupiter home. Miss Felkins was married to Donald Wharton of Oklahoma Saturday evening, June 1, at the Baptist church, the Rev. Vance F. Babcock officiating.

**Family Night**  
The Elk Plain Community church and Sunday school will present a special Family Night program at the church Wednesday, June 12, at 7:30 o'clock. All members and friends of the church and Sunday school are invited to attend. The program will include singing by all Primary children under direction of Helen Etlin, Primary superintendent, a special number by the Youth department and two films, "Our Primary Children on Easter Sunday" by Mrs. Etlin, and "Beyond Our Own." Refreshments will be served.

Reporter—Mrs. Ted Otterstad, LE 7-7658.

### Collins News

The Collins grade school picnic is being held on the school grounds today (Thursday) beginning at 9:30 p. m. Each child brings a sack lunch, the P-TA furnishing ice cream, pop and coffee.

**Community Sunday School**  
Sunday night service June 9 will be held in the home of Mr. and Mrs. L. Puett, 12801 Golden Given Road, LE 7-3757.

Wednesday night service June 12 will be held in the home of Mr. and Mrs. Ronald Pearson, Route 2, Box 225, Puyallup, TH 5-2396.

The Ladies Missionary Guild are having their picnic Friday, June 7, at Point Defiance park.

**Bible School**  
Work is progressing rapidly on the Vacation Bible school to be held in the Collins grade school June 10-21.

All children between the ages of 4 and 15 are invited to attend each of these days between 9:00 and 12:00.

The children will be "Pioneering with Christ" in an interesting and worth while time of Bible study, handicraft, songs and games.

The bus will leave Collins school at 8:00 a. m. and take the regular route. Sunday night service will be held in the home of Mr. and Mrs. Carl Reiniche, 1903 East 93rd.

Wednesday night service will be held at the home of Mr. and Mrs. Nelson, Route 3, Box 157, Puyallup.

Reporter—Mrs. Harold Burgeson, LE 7-7640.

### Graduates

Fort Bragg, N.C. (AHTNC) — Pvt. Charles C. Shultz, whose parents, Sgt. and Mrs. Edward Mathers, live at 15219 Portland Ave., Tacoma, recently was graduated from the 82d Airborne Division's Jump School at Fort Bragg, N. C.

Shultz received his parachutist's wings after completing the three-week course, which included five training jumps.

He entered the Army in November 1956 and received basic training at Fort Ord, Calif.

The 19-year-old soldier attended Clover Park High School, Lakewood. His wife, Kathern, is now living in Fayetteville, N.C.

### Honors To Top Collins Grads

Linda Abrahamson and Jerry Manley were selected as the outstanding girl and boy in the Collins 8th grade class, and were presented with certificates at graduation ceremonies last Tuesday night. Del Schafer, representing the Kiwanis, made the presentation and noted that their names were engraved on a plaque that hangs in the school hall.

Diplomas were awarded to the following graduates: Linda Abrahamson, Dennis Andersen, Judy

Anderson, Mary Anderson, Udo Ansins, Vivian Baker, Harry Beggs, Bobby Bernhardson, Sharryn Brown, Nancy Buhler, Larry Burke, Marvin Campbell, Evelyn Carlson, Wally Curtis, Diann Ell, Joann Ell, Jim Eustace, Gary Fuller, Roberta Gilllette, Walter Gogan, Charlene Gronlund, Rebecca Gronlund, Darrel Gunderson, Jack Haworth, Lois Houskeeper, Vernett Houskeeper, Larry Irish, Virginia Jeffries, Yvone Johnston, Ann Maiben, Doris Magruder, Jerry Manley, Dennis Matheson, Judy Marinchin, Sheila Montgomery, Howard Morris, Ervin Myhre, George Nagle, Tommy Nest-

garrd, Ronnie Norman, Carol Puett, Keith Resser, Lois Stonebraker, Judy Waddell and Dennis Wilson. Matt Manley, representing the school board, made the presentations, assisted by their teachers, Robert J. Brass and Russell D. Fulkerson. A short talk was given by Principal David M. Turnbull.

Assisting in the program, besides the students and their teachers, were Mrs. Waletta Carlson, music supervision; the Rev. Ted Smith, invocation; and Jerry Pepos, instrumental music teacher. The 8th grade mothers provided decorations and served refreshments.

### If'n Yer Takin Yer Gal Steppin During The Parkland Round-Up



You'll Need A Posie For Her Hair We've Got 'Em

### PARKLAND FLORISTS

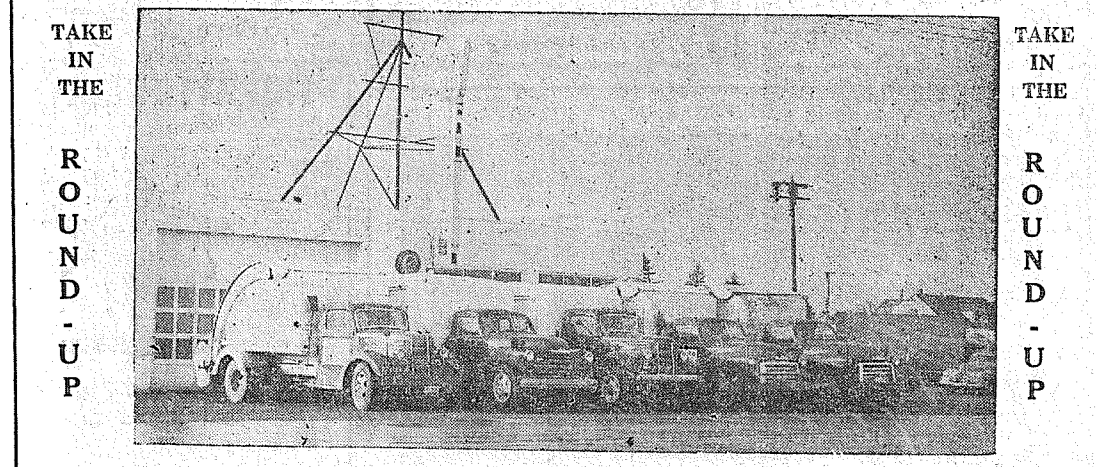
134th & Pacific LE 7-7270



Dead Eye Alice and Shotgun Merle (out in the back room when the picture was taken) are urging U-all to visit with 'em at the Round-up. We'll show you how to keep the home fires burning for very little dinero during those cold winter nights.

### Prettyman Heating Service

147th & Pacific Avenue LEnox 7-7869



Above is just a part of the rigs we send out to visit your place. If'n we ain't calling on yuh now, just give us a buzz. We'll send one of the hands right out to yer place. We clean up the Round-up.

### PIERCE COUNTY REFUSE COMPANY

135th & Pacific Avenue LEnox 7-8688

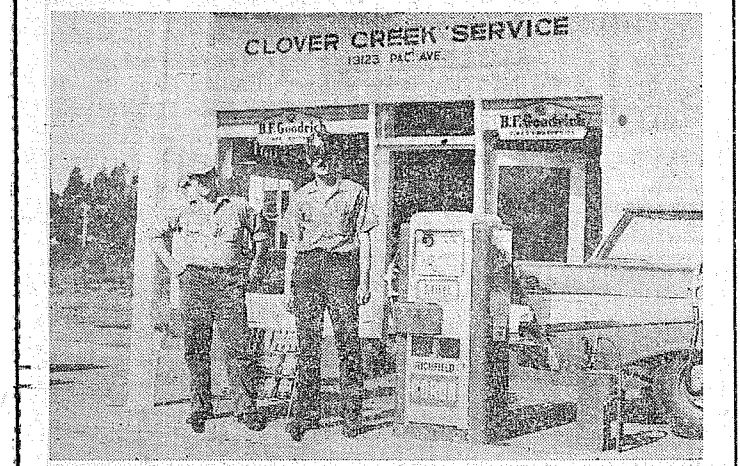
### FROM COWBOYS TO JET PILOTS...

Patty Ann Bakeries, home of quality bakery products, now serves Cowboys to Jet Pilots at their Park 'n Shop store, and the one across from the National Bank of Washington in Parkland.



### PATTY ANN BAKERIES

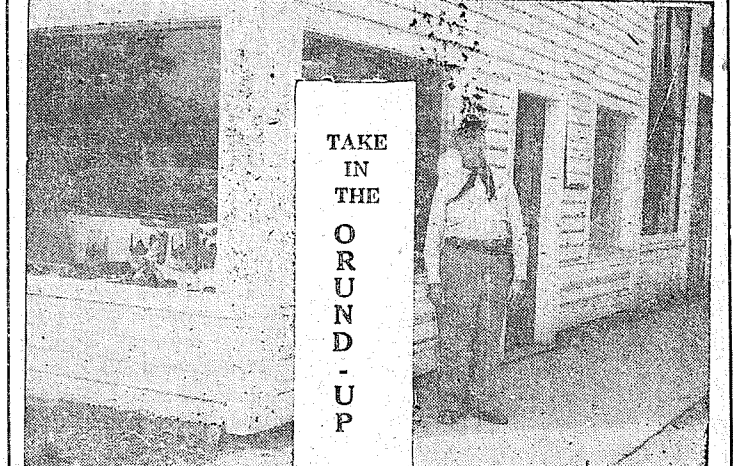
PARKLAND (Opposite Natl. Bank of Wash.) PARK 'N SHOP



YIPPIIIII, LET'S RODEO and while yer in town fer the Parkland Round-up drop in and Bob and Ron will send you on your way ridin high on the new Richfield Boron Gasoline. That's that new fangled stuff for your horseless carriage.

### CLOVER CREEK SERVICE

13123 Pacific Ave. LEnox 7-9933



Frank Turck invites you all to come to Parkland during the 7th annual Round-up. While you're here, drop in and say hello.

### GARFIELD VARIETY STORE

326 Garfield St., Parkland LEnox 7-8101  
Open 8:00 a.m. Till 8:00 p.m.

OPEN EVENINGS TIL 9 P.M.

# MOTOROLA

PRICES EFFECTIVE DURING

## Bob Feller Baseball TV SPECIALS

YOU CALL THE PLAY on the best buy of the season!

21-INCH OVER-ALL DIAGONAL 263 SQ. IN. VIEWABLE AREA

NEW MOTOROLA CONSOLE TV WITH LUXURY FEATURES AND PERFORMANCE

And at a price you can afford! New design Pushbutton On-Off and "Zero-In" Cascade Tuner for greater convenience and brighter, clearer pictures. New 90° Aluminized Picture Tube. Mahogany or blond finish.

Model 21K70—Mahogany \$279.95

Less Your Trade Up To \$100

and many other exciting models

PLUS THESE 2 BIG EXTRAS...

\$250 VALUE only 1.49

1 Official Bob Feller Youth League Baseball  
Finest quality construction throughout.

2 Official "How To Improve Your Baseball" Book  
80 pages...over 300 photos...tips on fielding, pitching, hitting.

# PARKLAND ROUND-UP

THURS. - FRI. & SAT.

# SILER'S

11230 Pac. Ave. LE 7-8634

FACTORY TRAINED SERVICE PERSONNEL

OPEN EVENINGS TIL 9 P.M.



HERE'S A GANG OF RIGHT NEIGHBORLY PEOPLE. Bob, Alex, Al, Martha, Joyce, George, Bobby, Mary, Dick, Jeanette, Bill, Pearl and Jo invite you to drop by the Big Bear corral, get acquainted and stock up your chuck wagon with vittles for the annual PARKLAND ROUND-UP. We'll help you every way, even to toting your grub out to the wagon for you. See you in Parkland June 6th, 7th, 8th and 9th.

### BIG BEAR STORE

133rd & Pacific Ave. (Where Better Foods Cost Less) 133rd & Pacific

## Hold Your Horses! Here Comes The Round-up Parade!

What's the circus—or the Round-up without a parade! This year's Round-up parade is scheduled for Saturday, June 8, and promises to be quite exciting. Fred C. Sanderson, chairman, and Harry Wuestney, co-chairman, are happy to have lined a fair number of floats and interested groups, also two high school bands — Franklin Pierce and Yelm.

96th street, ready to move to 96th and Pacific avenue, starting point for the event. The line of march is the same as in former years—From 96th south on Pacific, detouring to Park and back to Pacific along Garfield St., then on to 138th street and the Round-up grounds.

### Pony Express Ride To Open 1957 Round-up

Riding organizations taking part will be the Pierce County Sheriff's Posse, the Tacoma Larettes, the Parkland Junior Riding club, the Valley Riding club and probably three Olympia groups: The Thurston County Sheriff's Posse with its auxiliary and the Castle Riders.

At approximately 8:00 o'clock this (Thursday) evening, the last of the Pony Express riders will pull up his horse at the Parkland Theatre to deliver a letter from Gov. Albert D. Rosellini, thus formally opening the big 1957 Parkland Round-up.


While entry blanks have been available to anyone, the lack of one is no barrier to participating in the parade. Anyone wishing to share the fun may do so by being at the starting point by 9:30 Saturday morning. Groups are favored, though single riders are welcomed as they will be placed with others.

The important letter will be received at 6:00 p.m. from the Olympia postmaster and delivered at Parkland to Jack Quill, station superintendent here. As all the riders were specially deputized as mail carriers for the United States Government for this one occasion, the letter is actually official U. S. mail and a valuable collectors item. The Pony Express ride is sponsored by the Pierce County Sheriff's Posse and all participants are members of that hard riding organization who hope to lower last year's record of one hour 50 minutes from Olympia to Parkland.

The parade will form on Paterson street, facing north to

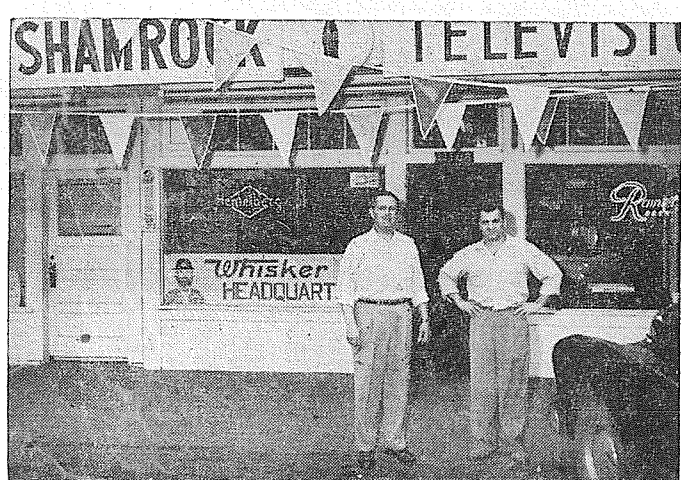
Del Cheney is chairman of the Pony Express committee. Riders will include Buzz Carmel, who picks up the letter at Olympia; Don Hanna, Jerry Banks, Cecil Nichols, Leo Balistereri, E. K. Dorwin, Del Cheney and Deb Flincham. Escorting each man as he rides will be others of the team in cars hauling their horse trailers, making an exciting caravan sure to create much interest in the Round-up.

MARGE and AL  
Hope You Enjoy the



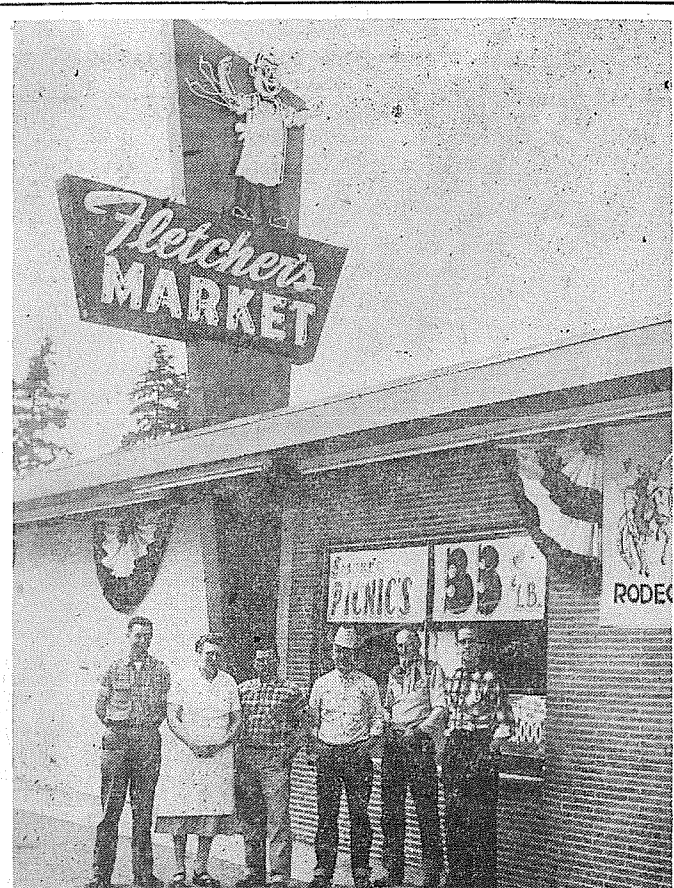
**ROLFE**  
Insurance Agency  
Garfield St. LEnox 7-3113

**Drive Safely**  
Save A Life



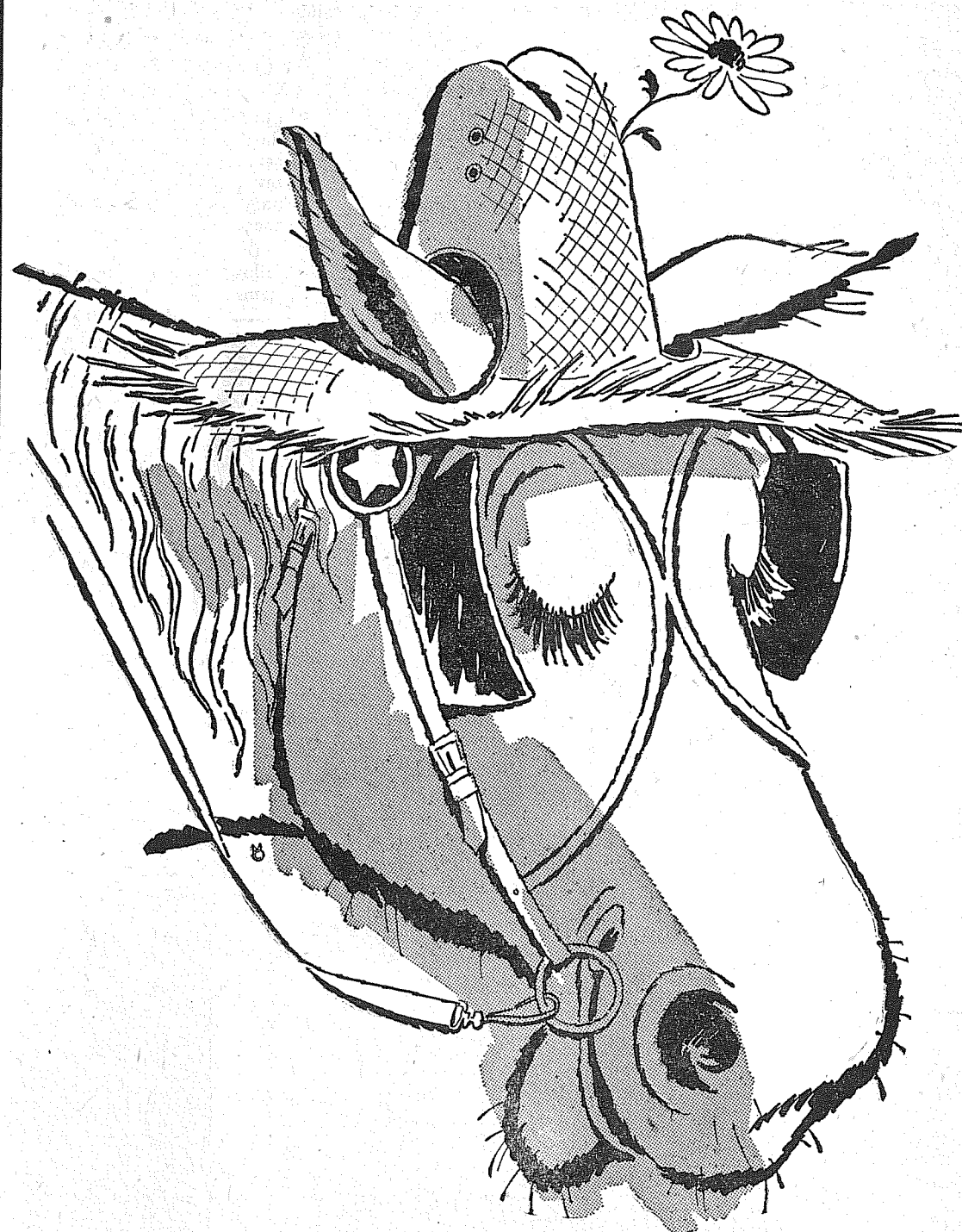
Any of you hombres that crave to wash down the dust and spend some time with some mighty hospitable westerners, stop in and visit BUD & ANZ.

**SHAMROCK THE FRIENDLY TAVERN**  
Proudly Serving A  
**PREMIUM DRAUGHT BEER**  
At It's Best Correct Temperature  
Served In Beer Clean Glasses  
AIRPORT & PACIFIC AVENUE



Here's one gang that needs no introduction. They're busy week after week rounding up the best buys ever seen out here on the prairie.

**FLETCHER'S** Home Owned Super Market  
12208 Pacific Avenue



All Us  
Smart  
Hoss'es  
Are Gonna  
Be At The

# PARKLAND ROUND-UP

# RODEO

# JUNE 7-8-9

- **CARNIVAL** - All week at Round-Up Grounds, 138th & Jay Street.
- **PONY EXPRESS RIDE** - Thurs. 6 to 8 p. m. Olympia to Parkland.
- **CORONATION PROGRAM** - Thurs. 8 p. m. Til ? Parkland Theatre Building.
- **SHERIFF'S POSSE HORSE SHOW** - Fri. 8 p. m. Til ? Round-Up Arena.
- **GIANT WESTERN PARADE** - Sat. 10 a. m. 96th & Pacific to Round-Up Grounds.
- **ROUND-UP DANCE** - Sat. 9 Til ? Bresemann's Park Pavillion, Spanaway.
- **RODEO** - Saturday and Sunday 2 p. m. Til ?, Round-Up Arena.

This Advertisement Made Possible Through The Generosity Of The Following Firms:

National Bank of Washington  
(Parkland Branch)  
Anderson Lumber Company  
Bargain Basket  
Brookdale Golf Course  
Big Bear Store  
College Golf Course  
Spanaway 5 & 10  
Mary's Bit O' Sweden  
Park 'n Shop Thriftway  
Parkland Cycle & Key  
Young's Gift Shop  
Armstrong's Used Cars  
Summit Trading Co.  
Bob's Place  
Soine's Parkland Shoe Store  
The Times Journal Pub. Co.

Jack Frost Company  
Jim Malyon Septic Tanks  
Siler's TV & Appliances  
Magdanz Lumber & Hardware  
Summit View Thriftway  
Parkland Upholstery  
Parkland Taxi  
Herman's Food Store  
Stella's Flowers  
J. R. Loring Real Estate  
Wilma's Beauty Shop  
Richardson's Well Drilling  
Spanaway Auction Barn  
Brad Bannon Insurance  
(Dick Sandquist)  
Fletcher's Market  
Avenue Feed Store

Sheridan Motors  
Keller's Floor Covering  
Gibbons Spanaway Food Center  
McKewen Studio  
Midland Thriftway  
A-1 Auto Wreckers  
Brookdale Lumber Co.  
McDaniel's Market  
Rollins Auto Wrecking  
Smith Jewelry  
ERO Motors  
A Parkland Neighbor  
IGA Foodtown  
Parkland Grill  
Home Gas Co.  
Ash Motors

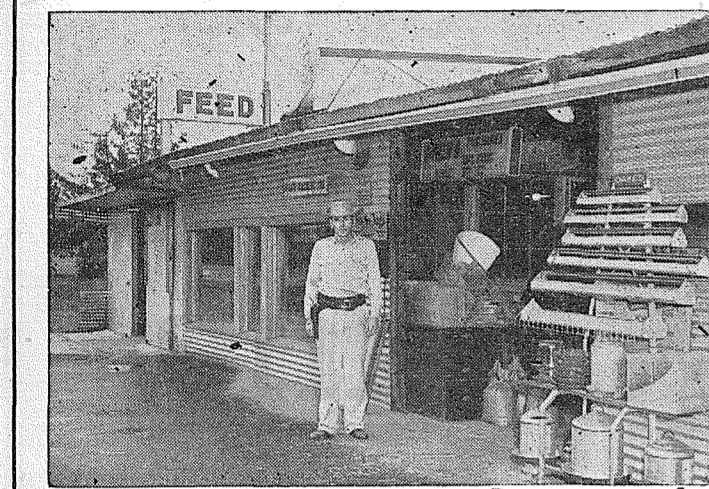
## Coronation of Round-up Queen Due Thursday

The coronation of the 1957 Round-up Queen will highlight a colorful and attractive entertainment event this (Thursday) evening at the Parkland Theatre, starting at approximately 8:00 o'clock with the arrival of Gov. Albert D. Rosellini's letter from Olympia, officially opening the Round-up.

Carrying the letter will be a group of members of the Pierce County Sheriff's Posse, deputized as U. S. mail carriers for the occasion, who will make the Pony Express ride from the state cap-

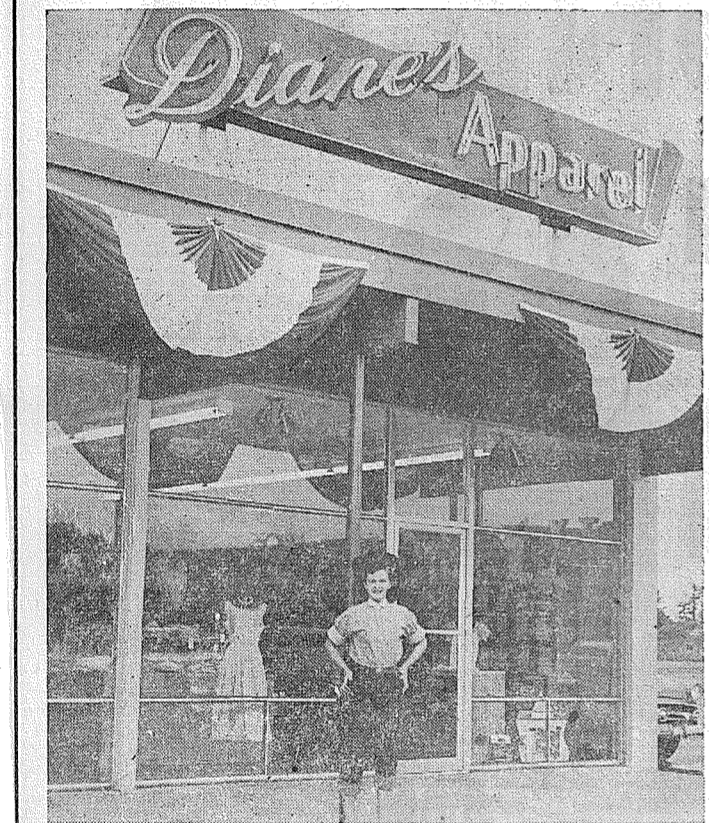
ital to Parkland. Jack Quill, station superintendent, will receive the letter at the theatre.

The identity of the Queen will be revealed and the lucky girl will be crowned by Johnny Busanich, 1957 Round-up chairman; the other nine candidates will be Princesses for the week. Candidates and their sponsors are: Merlene Anderson, sponsored by the Pierce County Sheriff's Posse; Sharon Centoni, Tacoma Lariettes; Emmela Downs, Parkland Big Bear; Marilyn Ganes, Parkland Junior Chamber of Commerce; Patricia Goubert, Roy, Wash.; Sherry Holmes, Sanders Health Service; Sandra Lenhoff, Tacoma Unit No. 1 of Washington Horsemen; Jackie Richmond, The Hub; Leona Stant, Parkland Junior Riding Club; Pat Wells, Colts & Fillies.



Rudy Engebretson sez: Don't go in circles looking for feed. We have . . . . . Feeds for every breed!

**RUDY'S FEED AND SEED**  
14660 Pacific Ave. LEnox 7-4888



Diane just rode up to ride herd on the store while her ma and pa, Bidly and John Smidt, run out to the homestead to check up on the stock. Speakin' of stock (women's apparel kind), it'll pay you gals to visit . . .

**Diane's APPAREL**  
(In The Big Bear Shopping Center)  
134th & Pacific Ave. LEnox 7-4800

Maurice Fletcher, in charge of the program, has arranged outstanding entertainment for the evening, seven stellar acts of music, dancing and riotous comedy. The headliner will be 30 minutes of professional talent recruited through Special Services at Fort Lewis and featuring two award winners, one of whom created a sensation on the Ted Mack show. Talented performers from Parkland and Tacoma will be enjoyed. "Fletch" is proud of the coronation program. Master of ceremonies will be George Spray who made quite a name for himself through the lively shows he put on for the March of Dimes.

And what does all this cost the viewers? Not a cent—anyone wearing a Round-up button will be admitted free. Of course you can buy a button at the theatre for only 50c if you've lost yours. You'll want it to wear the rest of the week anyway, so the show costs you nothing.

## Two-Day Rodeo Offers Top Performers

The Round-up arena will be a busy place Saturday and Sunday afternoon with big-name rodeo performers setting the pace for clever local lads. Several well known riders will be on hand to compete for prize money in the events, which include bareback and saddle bronc riding, steer wrestling (bulldogging), wild cow milking, calf roping and Brahma bull riding. "Woody" Woodard will furnish the stock.

Each day the Pierce County Sheriff's Posse will open the show with presentation of the colors. The Tacoma Lariettes will also appear for one of their beautiful drills each day. The clowns are always a thrill to the young-at-heart and all will welcome Parkland's own funnyman Joe Anderson, who will be aided and abetted by the Arnie brothers of Seattle. Connie Erk and his wonder horse Rex Junior will put on an

### Howdy Pardner . . .

WELCOME TO THE **Parkland Round-Up**

After the show is over, stop by and stock up on Hobby supplies to while away the time out on the range, at the

**HOMESTEADER**  
414 GARFIELD  
LEnox 7-3137



**CHRISTINE SAYS:** — "For that new colt or filly we have wearing apparel, sizes ranging to 6-X. Also lots of nice juvenile furniture to make life better for ma and pa. Hitch the wagon in front and stop in for a spell."

**STORKVILLE BABY SHOP**  
9618 Pacific Ave. LE 7-4664

## County Agent's Corner

By Florence D. Allen

Forty-six 4-H club members and leaders from Pierce County are going to the State College at Pullman on June 9th to attend the State 4-H Club Camp. Mrs. Gilbert Carlson, state president of 4-H leaders, from Waller Road, Mrs. J. C. Kittinger, president of Pierce County 4-H County 4-H leaders from Fife, Mrs. Sheldon Stutz, 4-H leader from Gig Harbor and E. J. Lawler, 4-H leader from Midland, will accompany the group.

## Rainier Shows At Round-up

Providing a true carnival atmosphere, Rainier Shows will operate a pleasing assortment of rides and other attractions all this week at the Round-up grounds, South 138th and J Sts.

The excitement and glamor of the old time traveling show offers a lot of fun to everyone, with a generous percentage of the "take" going to the Round-up objective—the development of the Parkland recreation center.

Each day the Pierce County Sheriff's Posse will open the program with a greased pig event with a fine prize for the winner.

Rodeo Chairman Kent Erickson promises a fast thrilled-packed show.

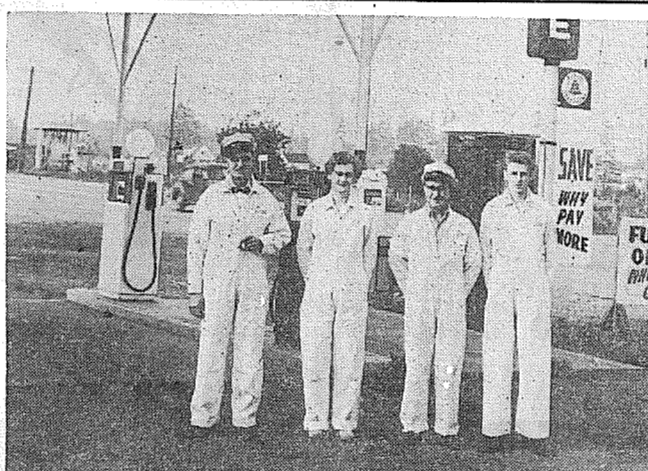
Boys and girls attending the State Camp are: Valeria Bombardier, Sally Hanson, Kathie Jones, Donna Ayers, Pat Lawler of Midland; Karen Winch, Roxine Schrader, Linda Savage of Riverdale; Denise Allgood, Ruth Snyder, Judy Clark, Linda Stutz, Bill Wasser, Bill Routley, Donald Buchanan, Katherine Buchanan, Edwin Moline of Gig Harbor; Pricilla Pederson, Phyllis Anderson, Nancy Brown, Rozanne Johnson, Edgar Graves and Diane Smith, Parkland; Donald Rasmussen, Weyerhaeuser; Alan Bergmyer, John Green, David Larson, Jim Schmit, Doug Smith of Edgewood; Linda Lewis, Donna Freeman of Tacoma; Linda Brotzman, Dick Casmier of Woodland; Sandra Kittinger of Fife; Jim Moebius and Marlene Banks of Thrift; Marvin Saxton of Orting; Jeanette Baker, Claudette Baker, Lana Alexander, Waller Road; Joe Grave of Eatonville.

The group will attend classes and go on tours at the college besides having activities in swimming, baseball and other types of sports and programs in Bryan hall.

**DROP YOUR REINS AND COME IN FOR THE BEST DAD BURNED VITTLES YA EVER ET**

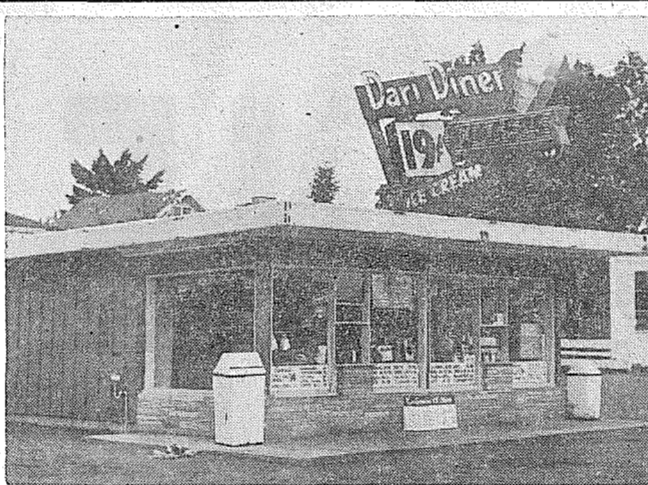
## The BURGER SHOP

134th & PACIFIC  
In The Big Bear Shopping Center



Orval, Dot, Fred and Orval Jr., say: We're here to give that ole or new hoss power plug of you'r'n the best of service. Bring her in for the finest major gas and oil. Also you can rent a hitch-up wagon here to move what have you.

**French's Mt. Sales-U-Serve**  
10802 Pacific Avenue LEnox 7-3088



Jim, Charlene, Dixie and Barbara invite you to stop and taste the beef in their 19c hamburgers. At the rodeo you'll see top steers, but here you'll taste top food.

**The DARI DINER**  
100TH & PACIFIC AVENUE  
Dogs - Shakes - Sundaes & Soft Drinks



Chuck Elliot, Bill Deering, Stan Catchpole, Bill Frost, Orv Torgeson all give a Hearty Welcome to all you Newcomers to Parkland.

**WE'LL BUILD YOU A RANCH HOUSE OR A BUNK HOUSE**

**BROOKDALE LUMBER CO.**  
136th & Pacific Ave. LE 7-8669

By George Purcell  
Two hundred seventy-four 4-H demonstrators in Pierce County this year! This is 50 more than in any previous year. The 4-H boys and girls motto is learn by doing. They practice what they preach by demonstrating their know-how in electrical, agriculture and home economics subjects. In these demonstrations they show and tell things connected with their projects—making rope halters, planting vegetables, culling chickens, pruning trees, making electric switch boxes, making clothing, preparing food, etc. Demonstrations by each boy and girl is just one method of teaching by the 4-H leaders. Judging of various agriculture and home economics is another method. Record keeping another. Camping is another and there are several other

methods. "See, I make most of my own fertilizer," Earl Rau of Spanaway pointed out the other day. He showed me his large compost pit. It was about 16 feet long, 7 feet wide and three feet high. He had it partly filled with alfalfa clipped from a small nearby plot. He also plans to cut a small nearby plot of sweet clover to finish filling the pit. I took his picture in the sweet clover which was 53 inches tall. He adds phosphate and lime to his plots. Dirt is mixed with the compost material. "This high nitrogen compost furnishes me with most of the fertilizer I need for my small place," Mr. Rau says. It apparently is very good fertilizer judging from his healthy garden and fruit bushes and trees. He built the pit with concrete blocks which are better than boards unless boards can be made airtight on sides. Compost is not a complete fertilizer but is a good soil conditioner and helps supply humus.



## HE'S NOT SCALPING!

UGGH! ME NO SCALP ANYONE . . .

Me only cut hair like you want and give closest shaves on the Reservation! STOP IN —

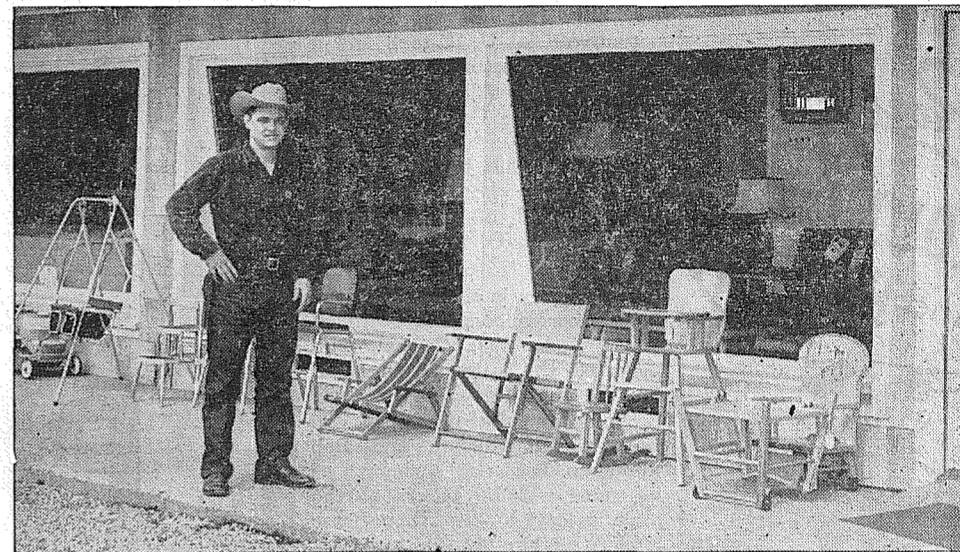
UGGH! UNION SHOP

## M A C ' S Barber Shop

ATTEND THE PARKLAND ROUND-UP

**132nd & Pacific Ave.**

**EVEN IN PIONEER DAYS Women Took Pains With Their Hair**  
Today the finest and most modern hair attention is available  
At **CHARM BEAUTY SALON**  
413 Garfield St. LE 7-7475



"Hard Wood" Gordon . . . For a Round-up Value in Home Furnishings. We Got the Goods!

**PARKWAY FURNITURE**  
LEnox 7-3941 141 ST. & PACIFIC AVE.

## OLD FASHIONED HAIR STYLE?

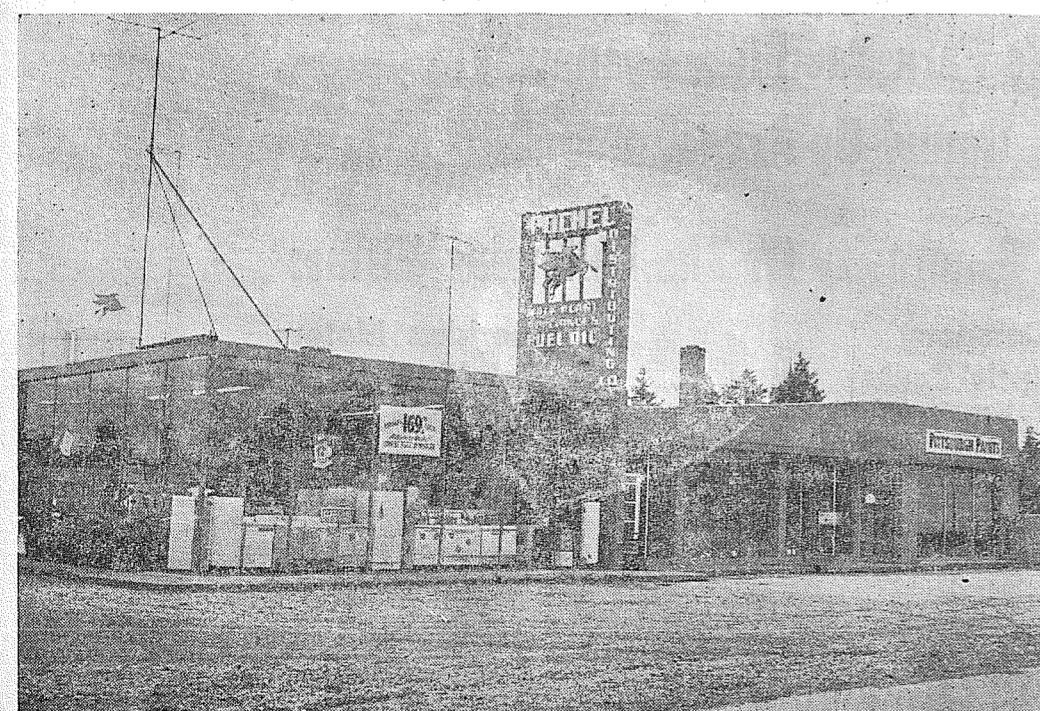
Howdy Miss!! Either you're from the East or you had your hair done at the FLAIR Beauty Salon!

You know that the Western days had little to offer the gals—but we do now at the FLAIR.

No Appointment Necessary



**FLAIR BEAUTY SALON**  
Big Bear Shopping Center 9 a.m. to 9 p.m. LEnox 7-0666



When you're in Parkland for the Round-up rein the flivver into our corral and take a gander at our display of modern appliances for the homestead . . . Stoves - Refrigerators - T.V.s - Freezers - Etc. Also no need for ma to split wood any more, just give us a call, our buckboard will come right out with the best in heating oils.

## Pochel Distributing Co.

140th & Pacific Ave. (Your Fuel Oil & Appliance Dealer) LE 7-8624



Huntin fer a spread? Any of the above pictured hombres, (Bull Shipper) Jim Loring, (Montana Rose) Muriel, (Wild Bill) Black, or (Ruslin Gene) Underwood kin shore fix you up. When you're in town for the Round-up stop by, schuck your gear and sit a spell.

**JAMES R. LORING. Real Estate**  
12605 Pacific Avenue LEnox 7-3501

### Young Grangers To Fete Parents

The Juvenile Grange will put on a combination Mother's and Father's day program at the next meeting of the Fruitland Grange Friday night, June 7. There will also be a display of the projects made by the Juvenile Grangers and these are to be sent into State Grange for judging. State Grange will be June 16-21 at Spokane. Mrs. Helen Greene, our Juvenile Grange Matron, and Mr.

and Mrs. Mitch Milne will attend from the Fruitland Grange. Mr. Milne is the Grange Master here. **Champions!**

The Woodland school basketball team won over Fingrove on Tuesday, May 28, by 6-5 giving them the championship in the elementary schools of the Puyallup district. Players on the team this year were: Pitcher, Roger Manning; catcher, Tommy Hagen; 1st baseman, Leon Cardwell; 2nd baseman, Johnny Harbor; 3rd baseman, Edwin Quirie; short stops, Johnny Snider and Jimmy Strong; fielders, Erwin Spencer, Neil Hanson and Allen Killian; substitutes, Larry Adams,

Russel Helmka, Freddy Minchau, Tommy Grass and Mike Sheldon. Coaches for the year were Mr. Ehrenheim, 5th grade teacher, and Mr. Barnes, 6th grade teacher at Woodland school.

#### Birthdays

A pot luck birthday picnic was held at the Carl Cordes home in honor of Geo. Cole's birthday this last week. Present were Mr. and Mrs. Geo. Cole, Mr. and Mrs. Carl Cordes, Mr. and Mrs. Bert Badham, Mr. and Mrs. Joe Holliday, r. and Mrs. Jim Calvert, Mr. and Mrs. Clancy Moore, Denny Moore, Mary Cook and Grandpa Cole.

#### Neighborhood Club

The Garden Valley Neighborhood club, from Garden Valley Road, met for lunch at the Top of the Ocean on Thursday, May 23, with 11 present. Their meeting is held the 4th Thursday of each month.

Participants from Woodland school in first year Violin Orchestra at the Puyallup elementary schools concert Friday, May 24, in the Puyallup junior high were Nancy Wooley, Cathy Mullins, Nancy Moss, Nancy Davis and Diane Fox. The parents of these children would like to thank Mrs. Charles Wooley for taking the girls down to practice every week for the past six weeks.

#### Grange

The McMillian Grange drill team exemplified the 5th degree at the Fruitland Grange Friday night, May 24, and initiated 41 members in the 5th Degree of the Grange, which the Pamona or County Grange. Six members were initiated from the Fruitland Grange: Mrs. L. E. Lovitt, Claudia Lovitt, Mrs. Ed Swalander, Mr. and Mrs. Frank La-Coss and Mrs. J. C. Mullins.

#### Booster Club

Booster club game night had a good turn out on Friday night, May 24, and the club would like to thank the following merchants for donations: Summit View Thriftway Store, Lewis Meat Market, Jerry's Shell Station (at Summit), Howard Allen's Grocery and Ma's Hamburger. The Boosters have purchased an electric fry pan to be awarded at their next game night, which will be June 28.

#### School Picnic

The Woodland school picnic at the Paul Bunyan Rifle club on Saturday, May 25, was a huge success with some 300 present. There was plenty of food and the kids and parents finished up on all the ice cream they could eat. Armand LeBlanc was the general chairman in charge of the picnic.

#### 4-H Winners

Members of the Evergreen 4-H from Woodland, Mike Wade and Roberta Reed, each entered a Holstein calf in the Enumclaw

Jr. Dairy show on Saturday, May 18. Mike won a red ribbon on type and a yellow on Fitting and Showing. Roberta won a blue ribbon on type and a yellow on Fitting and Showing.

#### Flower Show

Woodland participants in the Hill and Dale Flower show in Puyallup on May 25 and 26 came home with many ribbons. In the Junior Department, Nancy Wade received two blue ribbons, one in the horticulture division and one in arrangements, and a red ribbon in horticulture. Edward Wade won a red ribbon on arrangements. In the adult department in the horticulture division, Mrs. L. A. Holbert won a blue ribbon, Mrs. Lester Gelzer a blue ribbon, Mrs. B. M. Davenport two blue ribbons and a red ribbon and Mrs. S. J. Erick a blue ribbon. In the recreative division, Mrs. Everett Noels won a red ribbon, Mrs. G. J. Fisher 2 blue and one red ribbon, Mrs. E. M. Davenport a red ribbon. The Woodland Garden club won a yellow ribbon on "Back Door Arrangement" in which 14 clubs participated.

Reporter — Mrs. J. C. Mullins, TH 5-8621.

An optometrist is somebody who'll put the top down on his convertible and park under a tree even tho he hears the birds singing.

### Alder - LaGrande News

A potluck picnic at 5:30 and square dance at 7:30 will take place at the Alder Community club house at Alder Saturday, June 8. Sponsors are the Ties and Taws of Fern Hill and the Hoot and Hollers from Nelsons N-N at Edgewood. Ed and Hazel Townsend, club caller, and Helen and Lloyd Gilbert from La Grande are hosts. There will be guest callers and prizes. Ed says bring the kids and join the fun. Spectators and all square dancers invited. Coffee furnished.

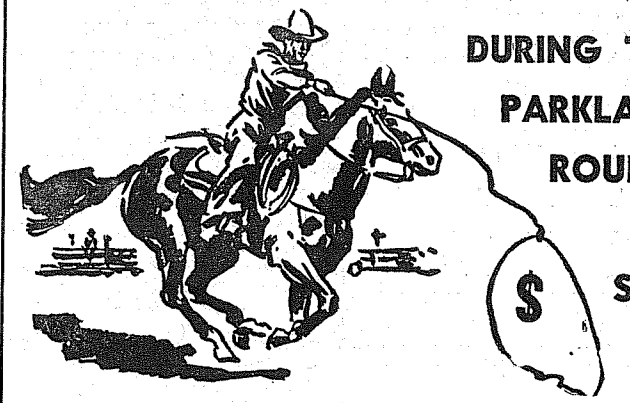
L. W. Gilbert

#### June 3 to 17 Set To Beautify Mail Boxes

The Post Office Department has officially designated a two-week period this year for rural mail box improvement, June 3rd through 17th. "This year will be the 19th that the Post Office Department has asked rural patrons to make suburban areas more attractive with painted mail boxes," said Postmaster Helen G. Young, of Spanaway.

Serviceable mail boxes authorized by the Post Office Department should be properly supported on strong posts. These boxes, which may be painted either white or aluminum, should be easily accessible to the carrier with the name of the owner inscribed in black letters on the side visible to the carrier. When two or more boxes are grouped at one point, or the receptacles are not directly in front of the residences, the names and ad-

resses of the owners must be on the front of the boxes. The bottom of the box should be 42 inches above the ground on an arm extending out from the post. Ruts in the approach to the mail box should be filled. A rural carrier is not required to leave his vehicle to serve a box. Flowers could be planted at the base of the post which should also be painted, to make the box more attractive. It is believed that where mail boxes are improved the mail service is likewise improved. Every rural patron will find the local post office employees anxious to give excellent service at all times. The cooperation of all owners of rural mail boxes is asked in this drive.



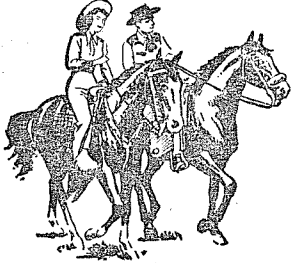
**DURING THE PARKLAND ROUND-UP Stop In**

See how you can lasso a good many dollars in savings on gifts for all occasions. Make your own wood fibre flowers that look so purty you have to smell 'em to tell they're not real.

### CERAMICS

by Vee

10215 So. Park Ave. LEnox 7-7293



Those Cowboy and Cowgirl duds are going to be full of soil... but why should you toil?  
Bring your cleanin' needs to us!

**College Cleaners**  
11416 So. Park Avenue

**Centre Cleaners**  
1/2 Block From P.L.C. Centre Bldg.



The whole dern yang: Cleve, Ray, Bob & Irv have one thing to say, podner. . . .

If every time you wanta go the buggy balks and the horse-power's low, you'll want it fixed so she balks no mo. Bring 'er in, we'll make 'er go.

## BOB'S PLACE

COMPLETE AUTOMOTIVE SERVICE

GAS - OIL - TIRES - BATTERIES - ACCESSORIES  
REPAIR SERVICE WELDING  
FREE INFORMATION, WIND & WATER  
AIRPORT ROAD & JAY STREET LEnox 7-3395  
(22 Years In Parkland)



SWAP-ER ROBERT says: "If'n ya ain't usin' it, swap it in on somethin fer yer ole Homestead. We take in the Bull as well as push it out."

**U - B - SAVING MART**  
12603 PACIFIC AVENUE



Ellis Whitman and Bud McMenamin speaking for the management and employees of Parkland's Piggly Wiggly, urge U-all to jump in the gas buggy, herd her into Parkland and take in the Round-up.

## Piggly Wiggly

Pacific & Garfield at Parkland



Yep!! Dick and his posse are right familiar with this h'yar rodeo. They bought land in this territory from Injuns and the critters are still making scalp-tingling deals.

**DEVEREAUX REALTY**  
11002 Pacific Avenue LEnox 7-8659

### "ONE SHOT" WES and DONA McKEWEN

Wes has shot more people and had 'em like it, than anyone else in Parkland. (He uses a camera).

**McKEWEN STUDIO**  
Parkland Center Bldg.  
LEnox 7-3833

HOWDY FRIEND! This spread is known as the best dern tooten business place in the West. The heat's on - but when it's off again, call

(MARV TOMMERVIK'S)

## PARKLAND FUEL OIL SERVICE

Phone LEnox 7-0256 120th & Pacific Avenue



**WELCOME TO THE PARKLAND ROUND-UP**

ENJOY BOWLING, THE FAMILY GAME  
OPEN LANES EVERY DAY & EVENING

**FREE INSTRUCTIONS**

CLASSES FOR THE WHOLE FAMILY TO START JUNE 10TH

MEN - Mon. & Thurs. 5:00 p.m.  
WOMEN - Tues. & Fri. 5:00 p.m.  
BOYS & GIRLS - under 18 - Tuesday & Friday 1:00 p.m.

## Paradise Bowl

10707 PACIFIC AVE. For Reservations & Information Call LEnox 7-6012



YIPPIE I-O-KI-O—Hop in the buckboard, grab your missus or your best gal and let's all go to the routin-tootin-shootin Parkland Rodeo. A hearty welcome from Art Swindland, Cliff Beckland, Bill Adams and all the gang at the

**NATIONAL BANK OF WASHINGTON**  
PARKLAND BRANCH  
112th & Pacific Avenue (Member FDIC)

### Shirley Roufs To Be Installed

Shirley Roufs, daughter of Mr. and Mrs. Herman Roufs, will be installed as Worthy Advisor of Faith Assembly No. 145, Order

of Rainbow for Girl, on Friday, June 7, at 8:00 p. m. in the Fern Hill Masonic temple, 84th and Park avenue.

Presiding will be Mrs. E. Nelson, Mother Advisor, and Miss Sharon Bowman, retiring Worthy Advisor. Other installing officers will be Julie Armstrong, Shirley Perkins, Karen Barclay, Susie

Gedbu, Judy Erdahl, Karen Grove, Lynn Ryker and Marlene Lindgren. Pages are Darlene McKinnon, Carolyn Hartness and Margaret Douthett. Dennis Roufs will be in charge of the guest book. Pouring will be Jeannie Guthrie, Lynn Ryker, Lynn Clark and Sandra Ziner. Soloist will be Janice Peterson. Elective officers to be installed are: Carol Williams, Worthy Associate Advisor; Patty Halvor-

son, Sister of Charity; Gini Dryer, Sister of Hope; Karen Motte-ler, Sister of Faith; Cynthia Cox, recorder; Linda Brightaupt, treasurer. Appointive officers are: Karen DeWitt, chaplain; Louise Brown, drill leader; Carol Kruckeberg, Love; Sally Hanson, Religion; Barbara Dugger, Nature; Judy Anderson, Immortality; Ginny Clinton, Fidelity; Joyce Anseth, Patriotism; Shirley Espheter; Service; Carolyn Myers, Confidential Observer; Carol Brown, Outer Observer; Margie Nelson, musician; Joyce Wallin, choir di-

rector; Gerry Iverson, flag bearer; Cathy Williams, standard bearer; Martha Smith, historian; Diane Fabry, orator; Linda Fabry, lecturer; Sharon Justice, keeper of jewels; Susan Daines, keeper of paraphernalia; Carlene Hoover, keeper of lights; Judy Hartsell, Bible bearer; Margaret Doutheti, page in the East; Wyona Russell, page in the West; assistants: choir director, Donna Mason; musician, Margaret Logan; outer observer, Dolores Davis. A reception and dance honoring the newly elected officers will follow.

### American Legion News

Susan Swanson

Parkland Memorial May 30. The program included greetings from Alfred Seaman, past commander; invocation, the Rev. Andrew D. Seago of Parkland Baptist church; address, Capt. Daniel W. McCalmont, chaplain at McChord; firing and taps, "C" Battalion, 28th Field Artillery, 2nd Division Artillery, Lt. John Hutz in charge. Mrs. Cecil DeHart placed a beautiful star of yellow flowers on the monument and other mothers carried poppy wreaths. Commander James Jensen represented the Post and President Thelma Walsh the Auxiliary; Mrs. Helen Jensen, 8 & 40; Mrs. Frances Anderson, the VFW, all with wreaths. Sam Carta and Mrs. Henry Swanson were in charge of the ceremony. Mr. and Mrs. James Linder raised their beautiful flag on their new 35-ft. flagpole and dedicated it Thursday. The next regular meeting of the Post and Auxiliary will be June 10 at 8:00 p. m. at Sunshine hall; everyone welcome.

### Midland News

Meeting at the home of their leader, Mrs. Frank Baskett, were members of the Midland 4-H Cloverbuds on Wednesday evening, May 22. Jane Lawler, president, and her mother, Mrs. E. J. Lawler, served refreshments. Kathie Jones gave a demonstration on "Shrimp Cocktail" and Jane on "Blueberry Muffins." Members present were Georgia Gemmill, Janet Bombardier, Sally Hanson, Nadine Olsen, Donna Ayers, Kathie Jones and Jane Lawler.

**Birth Day Club**  
Mrs. Harold Walker was hostess to the Birth day club Wednesday evening, May 29. An enjoyable evening was spent with the hostess serving refreshments to Messadams Larry Cleary, Richard McNeill, Walter Corrigan, Fred Siehl, Allen Zook, Clifford Tuller, Herman Portz, Charles Harris, Harold Stovig, John Both and A. Thompson.

**Special Mass**  
Members of the 1957 high school graduating class who are in St. John of the Woods Parish were honored at a Baccalaureate Mass Sunday morning at the 8:00 o'clock Mass, followed by a breakfast in the rectory. Graduates present were Carolyn Brusven, Elizabeth Weir, Valeria Bombardier, Leslee Ellison, Marlene Corrigan, Jim Haverly, Barney Harrison and Billy Woodard.

**Wins Scholarship**  
Congratulations are in order for Miss Nina Ayers who received notice last week that she is the winner of a \$125 scholarship to Western Washington College of Education where she will be enrolled in the fall to get started on her career as a teacher. Reporter - Marlene Corrigan, LE 7-8545.

### Harts Lake Grange Goes Visiting

At the DesChutes Grange, Thurston county, regular meeting night recently the Harts Lake Grange put on the program during the lecture hour. The program was composed of the numbers given in the Pierce County Grange Talent contest. The theme was "The Grange in Action." Reports were given by the Insurance Agent, Agriculture and Legislative committees, a demonstration by the Home Economics department and a poem, a stunt and two songs by the male quartet and songs by the Grange.

DesChutes served lunch to members of Harts Lake Grange and to Grangers from Nisqually, Chambers Prairie, Roy, Benston and Crocker.

DesChutes accepted the invitation to put on a return program at Harts Lake Grange at a later date.

### Building Permits

The following building permits have been issued by Keith F. Jones, County Road Engineer, Building Department:

Harold Brezicha, \$400 brood-house, Rt. 1, Box 20, Roy; Louis Weir, \$6000 addn. to home, 8502 Portland Ave.; Eugene P. Ducharme, \$2450 mov. home to prop., E. 126th & Woodland Rds. A. C. Wilhelmson, \$360 addn. to cafe, Rt. 2, Box 975A, Puyallup; Chas. R. Whittis, \$10,000 frame home, 3903 E. 112th; Medore L. Spooner, \$500 foundation, 863 So. 107th; Verne W. Voss, \$10,000 frame home, E. 172nd & "T" Streets; J. J. Erickson, \$600 patio & fireplace, 616 So. 117th.

### HOWDY NEIGHBOR!

Tie up to our hitchin rack and come on in! We've got plenty of that good old Western food you've been hankerin fer.

## PARKLAND XXX

119th & Pacific Ave.



After all that ropin' and wranglin', your duds are liable to be purty dusty and dirty... bring 'em here for washin'...

### PARKLAND LAUNDROMAT

Mon., Wed., Fri. 9 till 7 - Tues., Thurs., Sat. 9 till 6  
Pacific Ave. at Garfield Street LEnox 7-4600

### WHAT A RODEO!

Attend The Parkland Round-Up!  
Carl Sez: When you own a piece of land, you own something real and permanent; so when you're in Parkland for the rodeo stop by and chat a spell. We might have just the homestead you're hankerin' for!

### CARL T. LINDGREN Realtor

410 Garfield Street LEnox 7-5083

### ESTHER'S NOOK

408 Garfield St. Parkland

THIS HERE'S THE PLACE to drop rein and stock up on duds and do-dads for your young uns before you hit the trail back to the homestead after the Parkland Round-up is over.

### TRAV DRYER DRYER MORTUARY

220 South 134th LEnox 7-0253

Here's Luck to you pardner, welcome to the big Parkland Round-up.

### PARKLAND GRILL

Garfield St., near P.L.C. LEnox 7-9937

Howdy Stranger!! Dee & Dutch er mighty sorry to have to miss the Round-up, but their hands will serve you til their return.

### SPORTS COVERAGE

LEnox 7-0223

Hey, Pardner - I'm a-Goin' to

The Parkland Round-Up  
As Soon As I Get My Boots Fixed  
At  
**ART'S SHOES and REPAIRING**  
Garfield St. Across from the Parkland P.O.

### RAU MANUFACTURING CO.

140th & Pacific Avenue LEnox 7-7372

Earl Rau offers you settlers the tops in Sheet Metal Work. Earl says, "sheet metal work is next kin to tailoring."

### Esther & Emil Beitz OF PARKLAND WESTERN AUTO

Pacific Ave. near Airport Rd.

Every need for the Settler - Prospector plus The Things You Need for that Power Drive Buggy

### BLUE SPRUCE SERVICE

127th & Pacific Avenue LEnox 7-9996

FREE TRIPS to anywhere ASK HERE BLUE SPRUCE SERVICE ROYAL TRITON

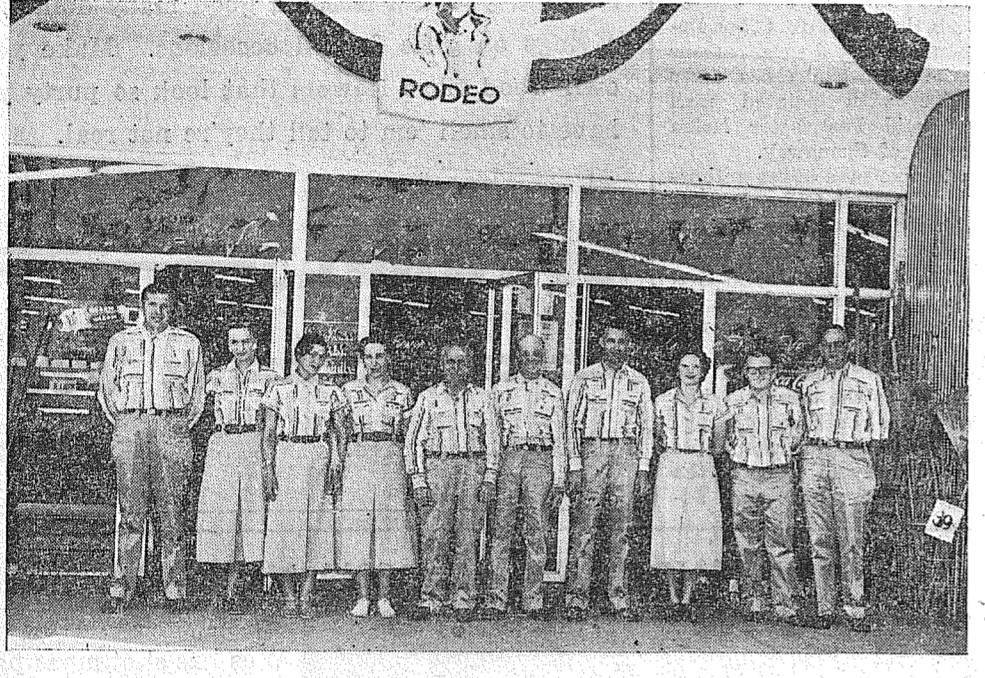
Herm and Bob sez: We got nothin for those 4-legged horses, but we sure can take care of those horses under the hood of the old chariot. Liven up the old buggy with a hot-shot of 76 gas.

### Jordan's

Reach for Jordan's today!..

in the new improved wrap

Jordan's



Otto Marth & Johnny Bussanich, top wranglers at Park 'n Shop invite you to stop by, light, schuck your gear and sit a spell. The biggest part of the friendly crew were on hand when the pitcher was taken. Here they are, from right to left: Don Klingsberg, Adele Wolff, Vivian Husk, Dorothy O'Day, Julius Mazzuca, Glen Owen, Ernest Christiansen, Betty Olson, James Ness, John Bussanich. We'll see you all during the Parkland Round-up.

## PARK 'n SHOP

98TH & PACIFIC AVENUE



WHAT A REVOLVIN' DEVELOPMENT THIS IS! Did ya ever see such a bunch of homely hombies in all yer life? These here are the wranglers on the Times-Journal spread. (It's the best we kin do. Times er tough you know). Anyhow, posin' fer this tintype, left to right is: Dave Hibbard, linotype puncher. (If'n he's not lookin' at the camera, its cause the heifers in our herd kinda take his eye); Betty Johnsen, assistant Blue Coat editor, (she's not poured into them there jeans. She wrestled them on all by herself); Ruth Charboneau, all-girl star of the Blue Coats Gazette. (She looks kinda out of breath cause she's been trying to round herself up a man fer quite a spell now); Dick Marcelle, apprentice wrangler. (He looks kinda puny, but that's understandable since his Missus presented him with a new filly colt just recently and seems he don't get too much sleep anymore); Neva Honeywell, top pencil pusher in the outfit. (If'n she looks a little sad think nothin of it. It's the company she has to keep around here that makes her look thataway); Bob Warren, top hand in the ad fetchin dept. (He's not glarin at ya. His bifocals need a little adjustin is all); Esther Goddard, ad fetcher. (Poor gal, she's plumb tuckered out from ridin around in the buckboard all day trying to round up stray ads.); Dolores Brown, circulation hand. (Boy, does she circulate. We never kin find her when we need her. Now don't get us wrong. She ain't afraid of work. She can stand and look at it all day and twont bother her a bit); Ken Pottle, spread superintendent. (Boy, is he spread); Dennis (the Menace) Williamson, printers devil. (If he looks slightly befuddled it's cause he went and got hisself hitched last Sunday); Chet Chamberlain, payroll guard. (Ornery lookin cuss, ain't he?); and then last and hardly worth mentioning is Jack Brown, ram rod of the outfit. (He keeps his hat pulled down over his eyes thataway cause he's bin scalped, leastwise it's startin to look like it.); Joanne Chalk, the young un in our bunch, didn't make it for the pitcher, and after countin noses seems we missed Louis Spry too. Guess nobody thought to wake them up. Anyway what we lack for in help we make up for in equipment. As you can see we've got nothin but the latest in transportation. Before we add a 30 dash it only seems fitten we should extend to you A HEARTY WELCOME TO THE PARKLAND ROUND-UP from all the gang at

### The TIMES-JOURNAL Publishing Co.

It Pays To Advertise  
IN THE TIMES - JOURNAL and McCHORD DEFENDER

Thriftway Ad Prices Effective  
Thurs., Fri., Sat., June 6 - 7 - 8th



Here's What You Need for a CHICK-N QUE  
To Make It a Sure-Fire Success!

**FRYING CHICKENS**

- FOR CHICK-N-QUE SAUCE
- MAZOLA OIL . . . . . QUART 53c
  - McILHENNY TABASCO SAUCE . . . . . 2-Oz. Bottle 39c
  - TO LINE THE PAN
  - REYNOLD'S WRAP . . . . . 25-Ft. 25c
  - SMALL BOTTLES
  - COCA COLA . . . . . Pack of 6 37c
  - FINE WITH CHICKEN. OCEAN SPRAY
  - GRANBERRY SAUCE . . . . . 500's 2/39c



**Shurfine COFFEE**

A WHIRLYBIRD 7-DAY SPECIAL!  
REAL FLAVOR!  
1-POUND VAC-PACK CAN . . . . . **89c**

**CRISCO** CANNISTER PACK 6-LB. CAN 1.89  
3-LB. CAN FOR . . . . . **89c**

**CATSUP** HUNT'S 14-OUNCE BOTTLES . . . . . **2/29c**

**HASH** ARMOUR'S CORNED BEEF HASH, 2 CAN PACK WITH FREE 25c PKG. FLOWER SEEDS **65c**

**DR. ROSS** DOG FOOD TALL CANS FOR ONLY **8/\$1**

**GOLD SHIELD** COFFEE 1-POUND CAN FOR . . . . . **89c**

**THRIFTWAY CHOICE MEATS**

WHOLE, LYNDENS, WASH. GROWN & PROCESSED

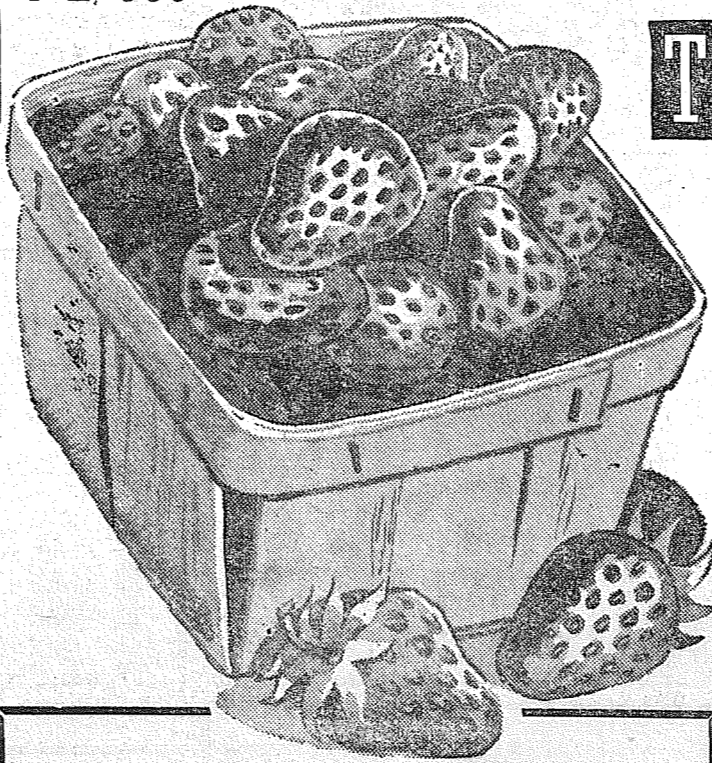
**FRYERS**

READY FOR BARBECUING  
2 TO 3 LB. AVER.  
. . . . . Lb. **43c**

HOLIDAY BAR-S FULLY COOKED BONELESS  
**HAMS** 8 To 12 Lb. Average . . . Lb. **89c**

BAR-S BRAND CHUNK STYLE  
**BOLOGNA or LIVERWURST** . . . . . Lb. **49c**

OVEN PREPARED  
**VEAL LOAF** . . . . . Lb. **49c**



**THRIFTWAY FRESH PRODUCE**

**STRAWBERRIES**

See Whirlybirds On KING-TV 8:30 Thursday  
Nite For Special Feature Price.

VALENCIA - FANCY CALIFORNIA  
**Oranges** . . . . . Med. Size Lb. **10c**

PURITAN BRAND  
**Tomatoes** . . . Tube **25c**

COLD SLAW FAVORITE  
**Cabbage** . . . . . Lb. **5c**

**June Is Dairy Month**

- DARIGOLD BUTTER . . . . . 1-Pound 69c
- LARGE SIZE LYNDEN AA EGGS . . . . . Dozen 43c
- QUART CARTON FRESH MILK . . . . . 24c
- SHUR-FRESH COTTAGE CHEESE . . . . . Pint Ctn. 27c
- EVAPORATED DARIGOLD MILK . . . . . Tall Cans 6/79c
- KRAFT CHEEZ-WHIZ, 16-Oz. 59c 8-Ounce 33c
- TASTEWELL CHEESE SPREAD . . . . . 2-Lb. Loaf 75c

Buy Your Canning Supplies At THRIFTWAY!

- |   |   |   |   |
|---|---|---|---|
| <b>CERTO PECTIN</b><br>6-Oz. Bottle<br><b>27c</b> | <b>SURE-JEL PECTIN</b><br>3 1/2-Oz. Pkgs.<br><b>2/27c</b> | <b>TAVERN PARA SEAL</b><br>1-Lb. Pkg.<br><b>23c</b> | <b>JELLY GLASSES</b><br>Tall or Squat Ctn. 12<br><b>79c</b> |
|---|---|---|---|

**THRIFTWAY**  
WHERE Every CUSTOMER IS IMPORTANT!

- Park 'N Shop Thriftway . . . . . 9662 Pacific Avenue
- Villa Thriftway Store . . . . . 10111 Gravelly Lake Dr. S.W.
- Summit View Thriftway . . . . . 5309 East 112th
- Midland Thriftway . . . . . 1701 East 99th
- Stan's Thriftway . . . . . 6421 Steilacoom Blvd.
- Thriftway Food Fair . . . . . 214 West Main, Puyallup

SERVE STRAWBERRY SHORTCAKE!

With Berries from Our Produce Dept. You'll Need These . . . . .  
25-Lb. C & H SUGAR . 2.59  
40-Oz. Pkg. BISQUICK . . . . . 43c

**Special Deal!**



DUNCAN HINES ANGEL FOOD CAKE MIX  
8c Off Reg. Price. Special Deal Package. **45c**

SUNSHINE 1-Lb. Pkg. GRAHAM CRACKERS . . 37c

SUNSHINE 1-Lb. Pkg. FUDGE SANDWICH . . . 45c

100 TABLET BOTTLE BAYER ASPIRIN . . . 62c

1c SALE. 65c Tube plus 29c Tube BOTH IPANA TOOTH PASTE . . 66c

- |  |  |
|--|--|
| Jell-O Instant PUDDING . . . . . 3/32c                           | Shurfine Cut GREEN BEANS . . . 2/41c                 |
| Hi Neighbor, Assorted COOKIES . . . . . 49c                      | Shurfint FRUIT COCKTAIL . 2/49c                      |
| Pillsbury PANCAKE MIX . . . . . 55c                              | Shurfine Y.C. 1/2's or Slices. PEACHES . . . . . 32c |
| Minute MASHED POTATOES 2/43c                                     | Tree Top APPLE JUICE . . . . . 29c                   |
| Kabuki Mandarin ORANGES . . . . . 2/31c                          | Sunny Jim Creamy Crunch PEANUT BUTTER . . . 63c      |
| <b>White Star Tuna</b><br>Chunk Style 1/2 Size Can . . . . . 31c | Vernell's BUTTER MINTS . . . . . 29c                 |
|  | Cat or Dog Food VITAFOOD . . . . . 3/29c             |

ARMOUR DIAL SOAP  
Stops Odor Before It Starts! Bath . . . . . 2/35c

CHIFFON LIQUID  
10c OFF DEAL  
Made For Dish-Washing . . . . . 59c

BORAX POWDER  
20-Mule Team 2-Lb. Package . . . . . 35c

BORAX POWDER  
For Easy Wash Days! 1-Lb. Package . . . . . 21c

ARMOUR DIAL SOAP  
Never Worry About Odor! Reg. Bars . . . . . 2/25c

BAB-O CLEANSER  
Bleach As It Cleans. Giant . . . . . 2/45c

White Sidewall Pads  
Brillo, Regular Size Package . . . . . 37c

BLACK TREE TEA  
48 Bags . . . . . 61c  
8-Oz. Pkg. . . . . 79c

**CLOVER CREEK . . .**  
**7th, 8th Graders**  
**Receive Letters**

Many 7th and 8th grade boys and girls won activity letters in the various sports. The list includes Wayne Bos, Patrick Dalby, Gene Holt, Gerald Hopkins, John McGee, Mike Taylor, Doug Woods, Ron Vorak, Jim McGee, Ernie Treadway, Ted Kestler, Wayne Spiway, Bill Wolff, Brian Franich, Roberta Barker, Christy Anderson, Sharon Dahlside, Mary Elza, Thelma Mayhak, Sandy Rendles, Vicki Reynolds, Jeanne Rodius, Virginia Van Dyke, Margraet McClure, Diane Ferguson, Judy Kistenmacher.

**Preschool Party**  
 Clover Creek Preschool honored Mrs. Jerald LaMarr, past president, at a party May 28 at the home of Mrs. Carl Nelson. A P-TA Past President's pin was presented; refreshments were served. Those present were Marge o'vrak, Betty Mead, Mrs. Carl Nelson, Mrs. Ed Betts, Mrs. Jerald LaMarr, Ethel Zerkle, Mrs. Wallace Bagley, Jeanne North and Mrs. L. Gustafson.

**Cruise**  
 The Clover Creek 8th grade had a cruise Wednesday, May 29. On a 35-ft. cruiser they traveled around the Sound during the afternoon, stopping at an island for a swim. Accompanying the young folk were John Connors and Mesdames Vorak, Randles, Tvedt, Wetherell and Mary Con-

**Baccalaureate**  
 Baccalaureate services for the 8th grade graduation group were held in the Clover Creek Baptist church with the Rev. Vance Babcock as the principal speaker. Music was furnished by Danny, Donald and Mike McDonald and Mrs. William Kennedy. The class includes Gene Holt, Patrick Dalby, Sandra Randles, Robert Barker, Sharon Vorak, Mary Ann Weimer, Mary Jean Elza, Caroline Holt, Judy McCoy, Thelma Mahak, Vicki Reynolds, Virginia Van Dyke, Dian Tvedt and Jeanne Rodius.

**Home Wedding**  
 Miss Madge Helen Rutz of Seattle and Omer S. Roland, son of Mr. and Mrs. Omer E. Roland of Clover Creek, were married

Saturday evening, June 1, at the Omer E. Roland home, the Rev. Gil Anderson of Seattle officiating. The bride wore a grey suit with white accessories. The attendants were Mrs. Paul Nichols and Edward Roland; flower girls were Penny and Pamela Nichols. Mrs. Ardene Nunemather, the soloist was accompanied by Mrs. Gil Anderson; Mrs. Don Fritz played the wedding music. The trio from the Clover Creek Baptist church sang "Take Time to Be Holy."

Following the ceremony the reception was attended by approximately 100, special guests being H. S. Kean of Hemingford, Neb., and Mrs. Vance McManigal and family and Mrs. Murl Nichols of St. Helens, Ore. After the wed-

**Spanaway News**

Spanaway Girl Scout Troop No. 60 enjoyed a day at the Deschutes May 25 with 19 girls attending. Parents were Mr. and Mrs. Lowell Kent, Mr. and Mrs. Leech, Mr. and Mrs. Oliver Omat and Mr. and Mrs. Merle Handy Jr.

**Vacation Bible School**  
 Daily Vacation Bible school will be held at Clover Creek Baptist church June 10 through 14, 9:00 a. m. to 3:00 p. m. daily, with Mrs. V. L. Lucas and Mrs. William Kennedy in charge. Transportation will be provided. Reporter—Mrs. William Dalby, LE 7-0163.

**Trip**  
 Mr. and Mrs. J. C. Funk motored to Yakima Sunday to attend the wedding of their nephew, Wayne Gohl.

**Visit**  
 Mr. and Mrs. Edward Flannery visited their son and family, the Ray Flannerys, who recently moved to Seattle, to help celebrate the second birthday of Bradley Flannery Friday, May 31. Secret Pal Club Mrs. Edward Flannery was hostess to the Secret Pal club

last Thursday. Present were Mesdames Robert Rhone, Bob Steidel Sr., Emerson Tarpenning, Jack Henriksen, George Stephenson, Robert McCullough, Matilda Symons and Beulah Ballard. Deepest sympathy to Theodore Stansbie and family on the death of his mother, Mrs. Fannie Stansbie, last Sunday. Reporter—Mrs. Oliver Omat, LE 7-6466.

**Paragon Printers**

Extend To You  
**A HEARTY WELCOME**  
 To The  
**PARKLAND ROUND-UP**

Glen Carmack says: "We don't handle lame horses, but we do a top job on watches, with fast, guaranteed repairs."

**TIC-TOC Jewelry**  
 10331 Pacific Avenue  
 WELCOME TO THE  
**PARKLAND ROUND-UP**

**RICHFIELD**

Lloyd Dillingham  
 Invites you to stop in at his new livery stable for a shot of that brand new Boron Gas!

**RICHFIELD SERVICE**  
 Pacific Ave. at Garfield St. LEnox 7-3040

**Soine's** **PARKLAND SHOE STORE**  
 411 Garfield St. Open 10-6 LEnox 7-3526

(Hop-A-Long AL SOINE)  
 A rancher who owns cattle wears his pant-legs inside his boots, so Al, just having their hides, meets the tradition halfway.

**PARKLAND ROUND-UP**

THURS. - FRI.  
 SAT. & SUN.

DON'T MISS THE FUN!  
 Speakin of Round-ups, we've rounded up the best dern bunch of buys on Homesteads as has ever been seen round these parts!

**Suburban Realty Inc.**  
 11302 Pacific Avenue LEnox 7-8638

**BACK AGAIN... BIGGER AND BETTER THAN EVER!**

**SAFEWAY BRANDS SALE**

OUR BRANDS ARE YOUR BEST BUY!

Prices Effective June 6th thru June 13th

<b>Tomato Juice</b>	Sunnydawn or Town House. Stock up at this low price.	<b>5</b> 46-Oz. Cans	<b>\$1.00</b>
<b>Green Beans</b>	Briargate Fancy Cut — Special this weekend.	<b>6</b> 16-Oz. Cans	<b>\$1.00</b>
<b>Fancy Peas</b>	Sugar Belle Fancy — Sweet and tender.	<b>6</b> 17-Oz. Cans	<b>\$1.00</b>
<b>Chunk Tuna</b>	Sea Trader. Ideal for casseroles.	<b>5</b> 6-Oz. Cans	<b>\$1.00</b>
<b>Canned Milk</b>	Cherub. Finest Quality.	<b>8</b> Tall Cans	<b>\$1.00</b>

**JELLY SALE**  
 Grape, Crabapple, Apple, Mint Apple, Strawberry, Plum or Orange Marmalade  
**5** 12-Oz. Jars **\$1.00**

**TOMATOES**  
 Gardenside — Fine quality at a special price this weekend.  
**5** No. 2 1/2 Cans **\$1.00**

**MARGARINE**  
 Coldbrook Brand, fine quality at a low price.  
**1-Lb. Pkg.** **19c**

**POTATOES**  
 Clean Long Whites Best Quality **lb. 3c**

GARDEN FRESH  
**HEAD LETTUCE** . . . . . each **5c**  
 MILD FLAVOR FOR SALADS  
**CUCUMBERS** . . . . . each **5c**  
 LOCAL GROWN. FIRST OF THE SEASON  
**CAULIFLOWER** . . . . . lb. **12c**  
 RED RIPE AND SWEET  
**WATERMELON** . . . . . lb. **6c**

**SHORTENING**  
 Royal Satin - Best for all your baking & frying  
**3** Lb. Can **69c**

**FLOUR**  
 Kitchen Craft - made especially for home baking.  
**10** Lb. Bag **89c**  
 25-Lb. Bag 1.98 - 50-Lb. 3.95

**LARGE "A" EGGS**  
 Breakfast Gems. Serve many different ways.  
**Dozen** **39c**

**Orange Juice**  
 Bel-Air, fresh frozen. Stock up.  
**7** Cans 6-Oz. **\$1**

Premium quality, fresh frozen. 10-Oz. Pkgs. **BEL-AIR PEAS** . . . . . **8/\$1.00**  
 Manor House, Chicken, Beef, Turkey. 8-Oz. Pies **MEAT PIES** . . . . . **2/45c**

- Melrose, Vanilla or Whole Wheat **FIG BARS** . . . . . **39c**
- Breeze, for snacks and lunches **CHEESE SPREAD** . . . . . **69c**
- Fluffiest, ideal for picnic roasting **MARSHMALLOWS** . . . . . **25c**
- Pirates Gold. 1-Lb. 35c **GRAHAM CRACKERS** . . . . . **65c**
- Sea Trader, a deep sea treat. **CRAB MEAT** . . . . . **39c**
- Roxbury Candies **GUM DROPS or ORANGE SLICES** . . . . . **49c**
- Tea Garden, serve chilled **APPLE JUICE** . . . . . **3/85c**
- Tea Garden — a family favorite. **GRAPE JUICE** . . . . . **4/\$1.00**
- Park Tels, ideal for camping trips **PORK & BEANS** . . . . . **2/35c**
- Lucerne, assorted varieties. Pint 25c **COTTAGE CHEESE** . . . . . **49c**
- Curtis, full of plump raisins. **CINNAMON ROLLS** . . . . . **25c**
- Skyline, for picnics and parties. **SANDWICH BREAD** . . . . . **30c**
- White Magic **CLEANSER** . . . . . **2/15c**
- Brocade, stock up **TOILET SOAP** . . . . . **10/69c**
- Scamper **LIQUID DETERGENT** . . . . . **49c**
- White Magic **BLEACH** . . . . . **45c**

**Big value Chuck Roast**

**U. S. 'Choice' Beef** **39c**  
 Blade Cut . . . . . Lb.

**Now try Steak!**

**For Outdoor Barbecues**  
**U. S. "Choice" Beef** Lb. **79c**  
**SIRLOIN STEAK**

**Safeway Quality**  
**ROUND STEAK**  
 U. S. Choice Beef Bottom Round  
 lb. . . . . **75c**

**CANNED PICNICS**  
 Famous Dubuque Brand  
**3-lb. Can** **\$1.98**

Prices effective Thursday, June 6 thru Wednesday, June 12 in Tacoma, Sumner & Puyallup. No sales to dealers, right to limit is reserved.

**SAFEWAY'S** **S** your **BEST** place to save!



# COME N' GET IT!



PRICES EFFECTIVE  
JUNE 6, 7 & 8

## CHUCK WAGON SPECIALS

STRAWBERRY  
SUNNY JIM

GIANT SIZE

JAM

40  
OZ.  
JAR

79¢

MAXWELL HOUSE INSTANT

COFFEE

6  
OZ.  
JAR

1.19

IGA 18-OZ.  
PEANUT  
BUTTER

47¢

IGA 10-LB. BAG

FLOUR

25 LB. BAG 1.89

89¢

60-OZ. 1.39



U. S. GRADED CHOICE BEEF

BLADE CUT

Pot Roast . . . 39¢

Pound

CENTER CUT  
CHUCK  
ROAST

49¢

LB.

ROUND BONE  
POT  
ROAST

59¢

LB.

LEAN FRESH  
GROUND BEEF . . . .

Lb. 39¢

SWIFT'S CIRCLE "S" BRAND  
SKINLESS WEINERS . . . .

2-Lbs. 79¢

JAMES HENRY  
COUNTRY BACON . . . .

Lb. 53¢

JAMES HENRY . . . . 6 TO 8 LB. AVERAGE  
PICNICS . . . . .

Lb. 37¢

SPRY 3 Lb. Can 79¢

OR IGA SNOWCREAM

PEACHES

LADY ELBERTA  
OR IGA  
RIPE & RAGGED  
WASH. ELBERTA

3 2 1/2 CANS 85¢

GREEN BEANS

IGA or DOLE  
BLUE  
LAKE

5 303 CANS 89¢

PINEAPPLE

LIBBY  
CHUNK

NO. 2  
CAN 27¢

MARGARINE

IGA

4 LBS. 83¢

COFFEE

IGA DELUXE  
2-LBS. 1.77 . . . . .

LB. 89¢  
CAN

IGA TOMATO JUICE 4 46 OZ. 97¢

CANTALOUPE

Imperial

Valley . . . . . Each

15¢

LARGE SUNKIST  
ORANGES . . . . .

Lb. 10¢

LOCAL CRISP  
ROMAINE . . . . .

Head 9¢

CALIFORNIA RED  
POTATOES . . . . .

5-Lbs. 19¢

IGA FRUIT

COCKTAIL

5 303 CANS 99

STARKIST

NO. 1/2 CANS

Chunk TUNA 2 53¢

SYRUP

NALLEY'S  
LUMBERJACK

24-Oz. . . . 29¢

RITZ CRACKERS. 1-Lb. Box 33¢

CORN

IGA  
CREAM  
STYLE

6 79¢

303  
CANS

TOMATOES

IGA  
SOLID  
PACK

4 65¢

303  
CANS

STRAWBERRY JAM

IGA  
20-OZ.  
JAR

35¢

PEAS

IGA  
FANCY  
3-SIEVE

6 85¢

303  
CANS

ZEE TISSUE . . . . .

4-Roll  
Pack 33¢

FOOD



TOWN

112TH AND PARK AVENUE

PARK WITH EASE - SHOP WITH PLEASURE

### Scholarships For PLC Students

Two students at Pacific Lutheran college have been awarded \$300 scholarships by Lutheran Brotherhood, fraternal life insurance society headquartered in Minneapolis. They are Milo W. Scherer of Sun Valley, Calif., and Gene K. Peisker of Minneapolis. The awards were presented by Clifford M. Korsmo, Tacoma agent for Lutheran Brotherhood. Lutheran Brotherhood is awarding \$37,750 in scholarships this year. They include nine scholarships of \$1,000 each to seminary students; 45 scholarships of \$300 each to senior college students; 12 scholarships of \$150 each to junior college students; \$12,450 in youth leadership awards to 83 high school students entering Lutheran colleges, and two scholarships of \$500 each to Lutheran graduate nurses.

### Mothers to Organize Co-Op. Play Group

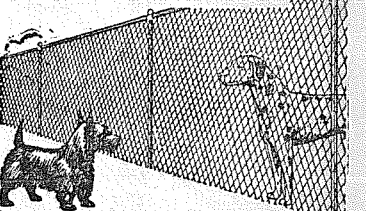
Mothers in the Canyon Road, Summit and pioneer sections are trying to organize a co-operative play group for children three and four years old. They point out that many youngsters are missing the experience of association with others of their age because country homes are too far apart for little tots to go visiting unless the busy mothers take them. The plan is to employ an experienced teacher for the two play sessions each week, two hours each time, with the mothers taking turns at helping the teacher. To make the plan work on a low cost basis it will be necessary to enroll from 20 to 24 children. The Grange hall, 80th and Canyon road, has been tentatively selected for the first meeting.

Any mother interested in the plan is asked to contact Mrs. Bruce Brennan, LE 7-7614, as soon as possible.

**FENCING**  
Designers and Builders  
EXPERT WORKMANSHIP  
REASONABLE PRICES  
Easy Monthly Payments  
**VAUGHAN'S**  
84th & Pac. Ave. GR 4-9515

Welcome  
To The  
**Parkland  
Round-up  
PARKLAND  
BARBER SHOP**  
Garfield & C Sts.

Keep your dog in ..  
other dogs out .. with  
**CYCLONE  
FENCE**



Also protect your lawn, flowers, home. Make your own yard a safe playground. Good-looking Cyclone is made of heavy galvanized steel and lasts longer than fence of other materials. Expert erection service. No down payment—Easy monthly payments. Send for illustrated booklet. Just phone and say "Please send me the free booklet that tells me how I can fence my home."

Market 7-4551  
911 1/2 Pacific Avenue  
Tacoma, Washington

ONLY UNITED STATES STEEL CORPORATION  
MANUFACTURES CYCLONE FENCE

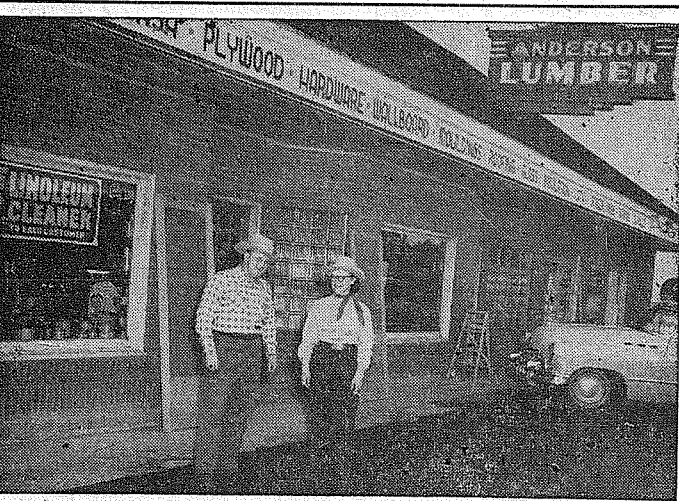
**Hurry!**  
... for extra  
earnings  
all savings  
placed on or  
before  
the 10th  
of the month  
earn from the  
1st  
of the month

A MUTUAL SAVINGS INSTITUTION  
**Pacific Federal  
Savings**  
and Loan Association  
Bellingham • Seattle • Tacoma  
Portland • Eugene

**A HEARTY WELCOME  
TO THE PARKLAND ROUND-UP**  
From  
**Rupe Machine Works & Garage**  
13411 Pac. Ave., P.O. Box 2445 Parkland 44, Wn. LE 7-7450  
**COMPLETE MOTOR REBUILDING**



**The Whole Sagebrush Evie Gang  
At PARKLAND CLEANERS**  
Extends a welcome to you during the Round-up. Stop in and visit this modern cleaning plant. Evie done away with the old wash boards long ago.



**MORRY and BETTY ANDERSON**  
has what it takes  
Thar hain't no hog wash about it,  
For better buildin', at lower cost! It's ...  
**ANDERSON LUMBER CO.**  
9813 Pacific Avenue LEnox 7-7311



**HOWDY FOLKS!** I'm Dave Weatherell and this here is my missus, Helen. We're newcomers out here on the prairie and sure would like to meet up with you folks, during the Parkland Round-up.  
**Dave Weatherell Texaco Service**  
136th & Pacific Ave. LE 7-4788



The stage coach has been retired from the regular run, but **WILD BILL BENATT** and **CACTUS CHARLIE** ain't retired, they're just plain tired from raslin those "MOUNTAIN BRAND" SHAKES all day. If the old homestead needs a new roof or siding, these two rannys are the guys for you to ride over and see. Why not **LOAD UP YOUR RIG** when you drive in for the ROUND-UP.

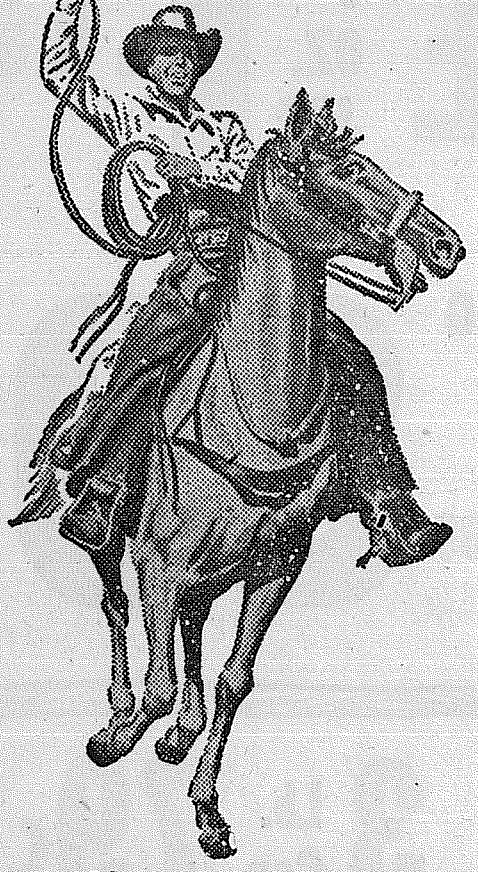
**General Supply Co.**  
12702 Pacific Ave. LEnox 7-4080

# IT'S FOOD VALUE ROUND-UP AT FLETCHER'S

- Icy Waters - Salad Time 6 1/2-Oz. **45c**
- CRAB MEAT** .....
- Maxwell House 6-Oz. **\$1.19**
- INSTANT COFFEE** .....
- Your All Purpose Shortening 3-Lb. Tin **79c**
- SWIFT'NING** .....
- Hunt's - With Lots of Pork 2 1/2 Tin **19c**
- PORK & BEANS** .....
- Rosedale Yellow Cling 2 1/2 Tin **\$1.00**
- PEACHES** .....
- Delicious For Salads 1/2-Gal. **99c**
- WESSON OIL** .....

- ### FRESH PRODUCE
- Large Juicy 2-Lbs. **29c**
  - LEMONS** .....
  - Solid Heads Lb. **5c**
  - CABBAGE** .....
  - Large Slicing Lb. **2/15c**
  - CUCUMBERS** ...
  - Large Size Sunkist Lb. **9c**
  - ORANGES** .....

**DON'T MISS THE  
PARKLAND  
ROUND-UP  
JUNE 7-8-9**



- Nalley's Champion Quart **49c**
- SANDWICH SPREAD** .....
- LUMBERJACK** 24-Oz. Bottle **29c**
- SYRUP** .....
- Nalley's Champion Full Quart **39c**
- SALAD DRESSING** .....
- Nalley's Champion Full Quart **25c**
- MUSTARD** .....
- Jordan's Pkg. of 6 **30c**
- HOT DOG BUNS, 10-Inch** .....

**FEED LOT BEEF - YOUNG TENDER**  
**ROUND STEAK** ... Lb. **59c**

<b>Porterhouse STEAKS</b> Tops for Broiling Pound <b>75c</b>	<b>SIRLOIN TIP ROLLED ROAST</b> Pound <b>59c</b>	<b>Lean GROUND BEEF</b> 3-Pounds <b>95c</b>	<b>POT ROAST</b> Pound <b>29c</b>	<b>RIB or SIRLOIN STEAK</b> Pound <b>55c</b>
--	---	--	--------------------------------------	---

**SELECT CUTS 7-BONE - WELL TRIMMED**  
**OVEN ROAST** ... Lb. **35c**

**WEINERS** 10-Inch Lb. .... **47c**

**READY TO EAT CARSTEN'S HYGRADE SHANK CUT**  
**Hams** ... Lb. **47c**

**Our Own SAUSAGE** Pound **39c**

**LEAN SHORT RIBS** Pound **10c**

**BEEF FOR YOUR LOCKERS** BY THE SIDE CUT & WRAPPED **lb. 39c**

- KITCHEN QUEEN FLOUR**  
25-Lb. Bag **\$1.89**
- EARLY CALIFORNIA RIPE OLIVES**  
Tall Tin **25c**
- CRESCENT BLACK PEPPER**  
Full Pound **59c**
- LARGE "AA" RANCH EGGS**  
Dozen **47c**

Young Tender  
**RUMP ROAST**  
Pound **39c**

**YOUR ONLY HOME OWNED  
SUPER MARKET**  
12208 Pacific Avenue

# Fletcher's

**OPEN:  
7 Days A Week  
9 a.m. to 10 p.m.**  
Prices Effective  
THURS., FRI. & SAT.  
THIS WEEK

No Sales To Dealers  
Right To Limit Reserved

**"COURTESY" OUR MOTTO ALWAYS**