

The Mooring Mast

★ CENTURY ★
★ EDITION ★

VOL. 27 PUBLISHED BY THE STUDENTS OF PACIFIC LUTHERAN COLLEGE, FRIDAY, JANUARY 13, 1950 NO. 11

Glads Dump Loggers In Close Win, 55-52

Delta Rho Gamma Valentolo Planned For February 10

Semi-formal Banquet, Smorgasbord, To Be Given In The Student Union Building

The annual Valentolo and a ski trip were planned by the members of the DRG at their recent meeting.

Committees were selected for the tolo, to be held on February 10, and it was decided that the dinner, a smorgasbord, will be held in the SUB. Co-chairmen for the affair are Bonnie Heen and Amy Brown.

The committees and their chairmen are as follows: Marlene Schwenke and Carol Schuler, co-chairmen for publicity, with Shirley Molter, Barbara Warner, Shirley Sagehorn, and Shirley Furseth helping them.

Harriet Olsen and JoAnn Nodt-

vedt, co-chairmen for the food committee, with Naomi Roe, Marilyn Pflueger, Carolyn Kjestaldt, Jackie Honnold, and Grace Keys serving with them.

The program chairmen are Louise Buhess and Lois Gates with Phyllis Maltzahn, Signe Baker, and Edna Sackett assisting.

The decorating committee is headed by the co-chairmen, Lenora Surface and Arija Abers, and their committee is made up of Marilyn Patterson, Beverly Keller, Dorothy Sweet, and Jo Friday.

Yvonne Tisch and Shirlyanne Sandine are co-chairmen for the entertainment committee and those girls helping them are Betty Shaw, Betty Hall, Joyce Taylor, and Dorothy Molund.

Clean-up will be taken care of by Beverly Sjobean and Lee Krumm, chairmen, and Dolores Johnson, Anne Demers, and Betty Jacobsen.

The ski party will be held on February 18 at the Milwaukee Ski Bowl and Shirley Furseth is in charge of the arrangements.

Campus Calendar

JANUARY 1950

- 14 (Sat.)—8:00 Basketball, St. Martins, here.
- 15 (Sun.)—Organ Guild trip to Olympia.
6:30—L.S.A.
- 16 (Mon.)—4:00, Pi Kappa Delta, L-114.
6:30—Viking Club, SUB.
6:30—Tawasi, S-204.
7:00—W.A.A., Gym.
- 18 (Wed.)—12:30, Letterman's Club, M-109.
6:30—Roller Blades, L-117.
7:00—Mission Society, Chapel.
7:00—Tacoma Philharmonic, Temple Theater.
- 19 (Thurs.)—12:30, Campus Devotions, Chapel.
4:00—Rifle Club, M-109.
7:15—Sohos, Girls' Lounge.
6:30—Curtain Call, SUB.
8:00—Basketball, PLC vs. EWCE.

Dr. Poppe, U of W Speaks Monday

Dr. Nicholas Poppe, professor in Mongol and Russian at the University of Washington, will give two lectures on the campus Monday, January 16.

"Between Two World Wars in Russia," is the general topic for his addresses. At 4 p.m. in the SUB auditorium he will speak on the subject, "Russia in World War I and Revolution." In the evening at 7:30 he will speak in Trinity Lutheran Church on the topic, "Experiences of a Scientist in Soviet Russia."

The visiting speaker was born in China, but lived in Russia from 1910 to 1943. He taught at the University of Russia in Moscow.

In his evening address, Dr. Poppe will tell about purges, persecution of religion, restrictions imposed upon science, deportation of people to parts unknown, war, surrender of entire armies to the Germans because of the discontent of the soldiers, and the escape of thousands of civilians to Germany.

Berentson, Lundgaard Pace Lute Scoring

By Bob Brass

"Baby it's cold outside," but it was plenty hot in the PLC gym last night as a packed house saw the Lutherans take a thriller from the Loggers by the score of 55 to 52.

Paced by the brilliant floor play of Gene Lundgaard and the sharp-shooting of Duane Berentson, the Lutes never gave up the battle even though they were 9 points down with twelve minutes left to play in the game. In beating the Loggers, the Glads knocked them from a tie for the league lead with Central; and still maintained the honor of never losing a conference tilt on their home floor.

The game started in a rush as the Lutes took the opening tip-off and tallied 2 points in the first thirty seconds of play. The Loggers came back with a basket a few seconds later. An even battle ensued for most of the first half, with the score see-sawing between the two squads. The end of the first half saw Jack Grader, of CPS sink a long one from the center of the floor, to put them ahead by the score of 30 to 24.

At the outset of the second half, it looked as though the North Enders were due to take this one from the Lutes. The Loggers kept the lead, and it varied between two and nine points until only four minutes remained. Harry McLaughlin fouled out after three and a half minutes of the second half had gone by.

Lee Amundson tied the ball game up at 50 to 50 with the first field goal of his college career and only four minutes were left to play. Del Schafer sank one to put the Lutes two points ahead, and then Dick Brown tallied for CPS to tie it up again. A free throw by Schafer and two free tosses by Lundgaard salted away the game for the Lutes.

Snowy weather failed to keep the fans from missing one of the best ball games ever witnessed by this writer. The gym was packed and people were standing wherever it was possible to stand.

Each team used nine players and all of them broke into the scoring column. Duane Berentson was high man for the tilt with 15. Lundgaard and Bobby Angeline of the Loggers each had 14 counters. Lundgaard, incidentally, made six out of seven free throws. Berentson fouled out with 12 minutes left in the contest, and Loggers Rod Gibbs, Brown and Bill Stivers fouled out in the last two minutes.

The Lineups

PLC (55)	(52) CPS
Lundgaard (14) F	(10) Brown
Hefty (7) F	(5) Fraser
McLaughlin (4) C	(3) Gibbs
Wells (2) G	(14) Angeline
Berentson (15) G	(1) Ellis
Halftime score. CPS 30, PLC 24.	
Substitutes: PLC, Huffman (4), Schafer (5), Rapp (1), Amundson (3); CPS, Sater (2), Rinker (9), Grader (2), Stivers (1).	

Speech 54 Class Will Give Plays Tuesday

Tuesday afternoon at 4 p.m., the students of speech classes 54 will present two one-act plays. These plays are put on every semester by the students of these classes as a requirement for a grade.

They are directed by the Dramatic Productions class under the able leadership of Mrs. Schaffer.

There is no charge for admission and all students and faculty are cordially invited to attend the performance.

Finalists Will Compete In Oratorical Contest Tonite

Three Cash Prizes, Trophy Presented; Judges Are: Battin, Summers, and Ponko

The annual all-college oratorical contest will be held Friday at 8 p.m. in the Student Union auditorium. Five finalists will compete in tonight's event.

Two preliminary rounds were held Thursday afternoon in L-104 to narrow down the field of competitors from 13 to five.

This contest is under the sponsorship of the Washington Epsilon chapter of Pi Kappa Delta, national forensics honorary. Lloyd Clevon, president of the chapter, will preside over tonight's program.

The name of the first prize winner will be engraved on the perpetual oratory trophy kept here at the college. The winner will also receive a cash prize of ten dollars. Second and third place winners will receive five and three dollars, respectively.

Judges for the finals tonight will be Dr. Charles Battin, forensics coach at the College of Puget Sound and president of the Pacific Province of Pi Kappa Delta; Morris Summers, teacher in the department of speech at Lincoln high school in Tacoma, and Maynard Ponko, debate coach at Lincoln. Preliminary contest judges were A. A. Mykland, Rev. T. O. Svare, Beulah Hedahl and Dr. Melvin Monson, all members of the faculty.

Student orators competing in the two-day event include Beverly Wigen, senior from LaCrosse; Walter Worley, senior from Bonners Ferry, Ida.; Virginia Seaman, junior from Tacoma; Vaughn Nelson, freshman from Tacoma; Howard Shull, junior from Portland; Lillian Leikauf, sophomore from Portland; Clifford Hadley, sophomore from Chicago; Mary Larson, junior from Menno, S. D.; Lowell

Knutson, junior from Seattle; Jon Ericson, sophomore from Richland; Herbert Neve, freshman from Everett; Robert Ericson, junior from Richland; and Marguerite Eastvold, junior from San Gabriel, Calif.

LATE BULLETIN

The five winners in yesterday's oratory preliminaries are Jon Ericson, Mary Larson, Lillian Leikauf, Vaughn Nelson and Herbert Neve. They will compete in the finals tonight.

Mission Society Elects Cabinet

Leonard Patzold was elected president of the Mission Society at its meeting Wednesday evening to direct the several functions and programs sponsored by the organization for the coming semester.

Alan Hatlen was chosen as vice-president and Ellen Walla was elected to serve as secretary-treasurer. Marcus Reitz will continue to serve as inter-club council representative, Merlin Zier, president of Mission Society for this semester, announced yesterday.

Pastor Robert Rieke of Seattle addressed the group last Wednesday evening after an introduction by his brother, Bill Rieke, a PLC student.

Dr. S. C. Eastvold, president of the college, will leave for the midwest and a series of conferences next week.

On Tuesday, January 24, Dr. Eastvold will meet with the general committee of the United Christian Education Appeal. The following day he will attend the meeting of the committee which is planning the general convention of the ELC to be held in Minneapolis, June 21 to 27.

Dr. Ramstad Head Coach; 1926

Recall Sports Thrillers Of Mentor Program

That fabulous "Golden Era" of athletics in the mid-twenties marked the beginning of football at PLC.

Mr. Ramstad, Professor of Chemistry at PLC, mentored the gladiators' first football team in 1926. Bellarmine high school and Lincoln intermediate were the only opponents on the schedule that year.

When the first Northwest Junior College Conference was organized the following year, the Parklanders won their first conference title by defeating the CPS reserves and Centralia Junior College.

Speaking of rivalry, in that first contest with the CPS reserves which ended with PLC on the long end of a 13-0 count, Arling Sonnerude tackled so viciously that five CPS players had to be carried off the field. Playing on that same team was Svare Omdal, who is now Commissioner of Agriculture for the state of Washington.

"Red" Carlson, who also played under Mr. Ramstad and later under Cliff Olson, was given the nod as the greatest PLC football player of that era and was also awarded a berth on Cliff Olson's all-time Gladiator football team.

"As a punter he was par excellence," declared Mr. Ramstad, who backed up his assertion by recalling the Ellensburg game in 1932 when

Red three times in succession punted over 50 yards and each time placed the ball out on Central's two-yard line.

During those same years PLC had one of the best girls basketball teams in the country. Palma Langlow, who paced the girls to a championship in 1927, topped the nation's hoopwomen with 286 points and an impressive 22 point average. Comparable to Babe Didrickson, Palma also excelled in swimming, golf and tennis.

Also varsity basketball coach in the late twenties, Mr. Ramstad names William Nyman as the PLC cager who was the best long shot artist of that period. On one occasion when the Gladiators encountered Centralia Junior College, Bill put his 140 pounds behind the ball and sunk a long one from 40 feet out. The next time PLC gained possession of the ball he snapped the twine with another 40-footer. By this time the crowd was on its feet cheering and yelling for Bill to cast off again. He did and chalked up another two points. His last effort was an impossible shot from 50 feet out that careened off the backboard and fell through.

Mr. Ramstad believes this to be one of the top demonstrations of long shot skill during his coaching career at PLC.

RICHARDSON'S

The Store for Skiers

The Mooring Mast

Published every Friday during the school year by students of Pacific Lutheran College.
Entered as second class matter, October 2, 1925, at the Post Office at Parkland, Washington.
Office: Student Union Telephone: GRanite 8611
Subscription price—\$1.50 per year

Printed on the Campus by La Crosse Printing Company

EDITOR.....LOU INNERARITY
ASSISTANT EDITOR.....MARLENE SCHWENKE
BUSINESS MANAGER.....PHIL FALK
ASSISTANT MANAGER.....BOB FERGUSON

Editorial Staff

General News: Carol Schuler, editor; Beverly Allen, Don Breimo, Helen Enger, Jon Ericson, Harriet Olson, Alan Hatlen, Barbara Jonson, Steve Kennedy, Stan Kvern, Glenna Nelson, George Torgeson, reporters.

Features: Glenn Clark, Blanche Kilmer, co-editors; Joan Gardner, Bob Johnson, Shirley Molter, Stan Norley, writers.

Sports: Bob Brass, editor; Don Gannon, Bob Ferguson, Jim Kerns, Luther Kroenke, Paul Templin, reporters.

Business Staff

Advertising: Bob Gregorson, Jo Ann Nelson.

Circulation: Marian Cummings, Jo Friday, Barbara Warner.

Study to show thyself approved unto God, a workman that needeth not to be ashamed, rightly dividing the word of truth.

II Tim. 2:15

Chapel Quotes

"Some people have no difficulty in making choices; they make none."—E. Stanley Jones.

"Outside of the will of God we cannot succeed; inside of His will we cannot fail."—E. Stanley Jones.

"Time is the gateway to eternity."—Dr. Eastvold.

"Prayer is not conquering God's reluctance; it is taking hold of God's willingness."—Dr. Eastvold.

Our Students Hail Thee!

(UNABRIDGED LUTE EDITION)

By Glenn "Red" Clark

PLCalisthenics—Da long, long trail frum da campus ta da gym whut makes sum a us healthy 'n' odders wrecks.

PLCalorie—Da fifth-columnist in da battle a da bulge.

PLCamel—Da java hounds dat haunt da snack bar.

PLCharm—Whut sum uf us should oughta have ta bring up doze low grades.

PLCobweb—Da stof dat covers da grey matter when it hadn't aught.

PLConduct—Whut a lot a usuns cud practice a liddle mor uf.

PLCoot—Whut eny burd is dat wades tru dis column an' tinks it's fenny.

Rainbolt in Hospital

Gene Rainbolt, freshman halfback from Everett high school, is resting comfortably at the Doctor's Hospital following an operation on his right knee. It has been bothering him all year and caused him a lot of trouble on the football field. It prevented him from playing this last year, but being an exceptionally good passer, he will probably see a lot of action next year.

Gene was a three-year letterman at Everett, and set a cross-state scoring record in his sophomore year. He was one of the most feared backs in the league, with his running, punting, and passing making him a triple threat man on the field.

We wish Gene a speedy recovery and hope to see him back at school next semester, and hope he will be able to play football this coming fall.

Winthrop
Men's Shop

784 Broadway MA. 6635

The DONUT BAR

TAKE A DOZEN TO
THE GAME

Parkland GR. 9950 Tacoma HI. 3081


Brookdale Lumber
Company

Brookdale GR. 8669

NEAL E. THORSEN
TRICKS - JOKES - MAGIC

Costumes - Tuxedos - Serpentine
926½ Broadway MA. 4861

Patronize Your Advertisers



PIPER
FUNERAL HOME
phone HILLSIDE 8479
5436 So. Puget Sound Ave.

Mrs. Frisbie's
BAKERY

For Good Bakery Products
710 So. 38th St. GA. 7591

SEARS

Roebuck & Co.

1148 Broadway BR. 4321

When You Want Office Supplies

C. Fred Christensen
STATIONER

913 Pacific Ave. BR. 4629
Tacoma, Wash.

Prayer Meet First Monday

That an all-college prayer meeting should be held for thirty minutes, starting at 6:30 on the first Monday of each month, was decided unanimously by a large group led by Dr. S. C. Eastvold, which met Tuesday evening in the Student Union auditorium as a result of a petition signed by more than fifty students and members of the faculty.

The petition was addressed to the president of the college as a result of his closing chapel statement of January 5 which was "Give me a praying student body and a praying faculty and I will give to the world the best college."

"We are in full accord with your desire and want to make this the best college in the world. We would therefore, be heartily willing to meet at an appointed time for the purpose of spending time in prayer and Christian fellowship," the petition continued.

The group that met Tuesday evening asked Dr. Eastvold to lead the group when he was on the campus.

Eighty Student Fifty Years Ago

Fifty years ago approximately 80 students were enrolled at Pacific Lutheran College for the Spring term. This year over 980 students will enroll for the Spring term. That shows how much the school has changed in the last Century.

The students then had one building, Old Main, and everything connected with the school took place in this building. Now classes are held in every building on the campus, and in the gymnasium. There were only ten teachers then, as compared to 60 now; so you can see how much the school has grown.

We are proud of Pacific Lutheran College and all the tradition that is connected with the school. Let everybody do his best to keep this tradition running true to form.

PARKLAND
MEN'S SHOP

DON STRANDEMO
Garfield Street Parkland

DANIELS
HARDWARE



ON THE HIGHWAY CORNER
PACIFIC AVE. & GARFIELD

Complete
Banking
Facilities
in the nearby
Lincoln District



LINCOLN BRANCH
3808 South Yakima Ave.

Member Federal Deposit Insurance
Corporation



FIFTY YEARS AGO—The Pacific Lutheran University Band gives out with a rendition of their own in the middle of Garfield Street. Two members of the group still live in Parkland—Leonard Brottem and Ludwig Larson. The present Old Main can be seen in the background.—(Photo Courtesy Parkland Times).

Roller Skating Party At Lakewood Feb. 17

A roller skating party sponsored by the Roller Blades will be held at the Redondo Skating Arena, February 17.

Tickets will be sold by members of the club in the main hall a few days previous to the event. The price is 65 cents. Other details concerning the party will be announced later.

This will be the first roller skating party sponsored by the Roller Blades this year. Earlier in the year, the group held an ice skating party at the Lakewood Arena.

The United States has 12,758,689 licensed hunters.

98th ST
HARDWARE
STORE

Centre Cleaners

FOR ALL CLEANING NEEDS

Parkland Centre Building
One block from Campus
Carl and Ingrid Fynboe, props.

Clover Creek
Market & Lockers

GROCERIES - MEATS
Brookdale GR. 8013

PARKLAND AUTO PARTS

IN CONNECTION WITH

Parkland Fuel Oil & Service Station

GRanite 8112

Parkland, Wash.

SEE OUR SCHOOL TOGS

For Men and Women!



**Parkland
XXX**

Featuring the . . .

Merchants Lunch, 50c

STUDENT MEAL TICKET
A \$5.50 Value for \$5.00

Two Blocks North on Mt. Highway



From The Bench

By Bob Brass

Now that the snow is on the ground, and the pigskin has been wrapped up and put into moth balls, basketball has become the topic of sport conversation, (with the possible exception of the Hot-Stove League), the Harsh-men have salted away eleven out of thirteen ball games, losing to Portland U. and University of British Columbia, the U.B.C. tilt being the first conference game of the season and thus the first conference loss.

"High Harry" McLaughlin is the squad's leading scorer, with 185 points, prior to the CPS battle. He came close to setting up a four-year coast scoring record in the Western tilt, and will, without doubt, set a new record before the season is half finished. Harry's average is a little better than 13.8 points per game.

SPLINTERS

Congratulations to Mr. and Mrs. Jack Guyot, the former Ruth Tvedt, who were married in Euphata on New Year's Day . . . McLaughlin may set a four-year record, but this writer's prediction is, that Gene Conley of W.S.C. will break that record before his college career is finished . . . Congratulations are also in order for Ted Lund and spouse, who were married during Christmas vacation . . . That's 30 for today.

Patronize Your Advertisers

C. O. Lynn Co.
MORTUARY
717 TACOMA AVE. Phone MAIN 7745

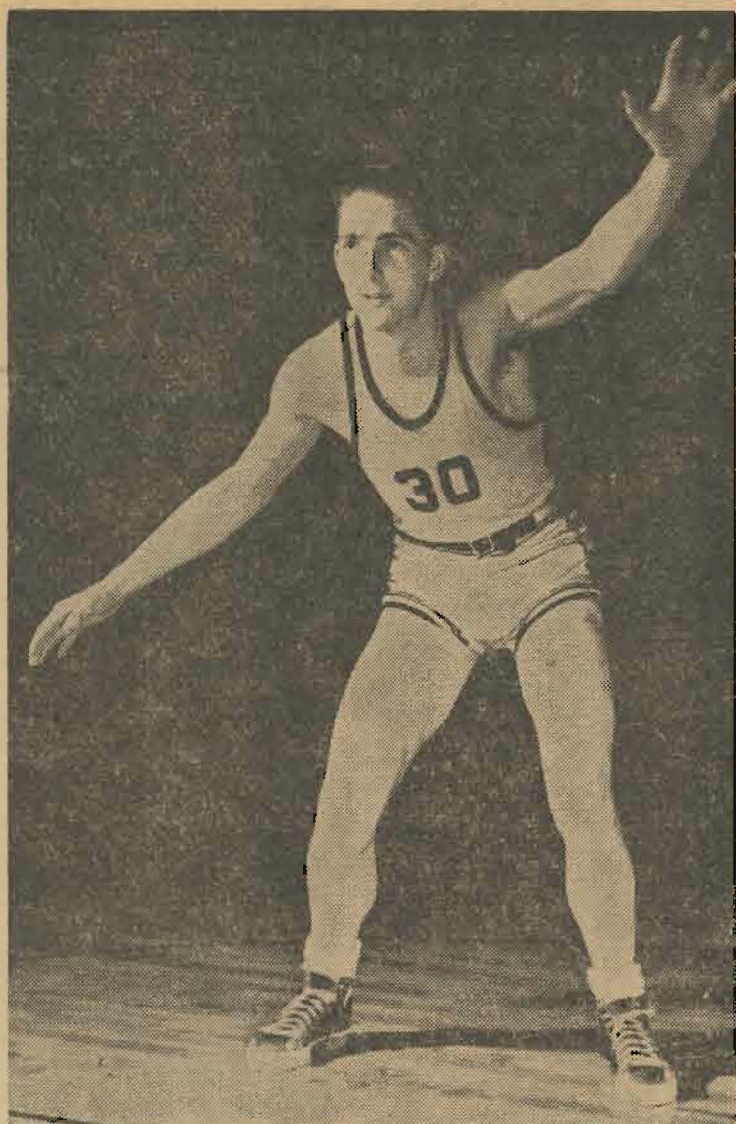
Jayvees Ball .500 Play Rangers Sat.

Under the able leadership of Coach Tommervik the Lute JV basketball squad has a .500 average already this season. They have defeated the CPS Loggers' JV squad once, and last night they played them here at Memorial gymnasium. They will play them twice more this year. They also have defeated St. Martin's JV squad twice, once here and one in Olympia. During the Christmas vacation they defeated Lincoln high school and the strong Ballard First Lutheran of Seattle. In the lost column, they have lost two close ones to Junior college quintets. Grays Harbor JC and Centralia JC defeated them by no more than three points. The McCord Field Packers defeated the JV's last Thursday by a score of 49-47 at McCord Field. The strong Olympic Cammeranoes and Seattle University Papposes have defeated them by decisive margins.

There are eight remaining games on their schedule, and probably more if they can be arranged by Coach Tommervik. The remaining games are: Jan. 11, CPS here; Jan. 19, Seattle Pacific here; Jan. 27, Seattle JV's there; Jan. 28, CPS here; Feb. 10, St. Martin's there; Feb. 11, CPS there; Feb. 18, Centralia here; and Feb. 23, Seattle Pacific there.

During the 1920 and 1921 seasons, the University of Georgia football team did not allow any of its opponents to score through the line.

Georgia Tech defeated Cumberland by the score of 222 to 0, in 1916, and the Yellowjackets scored 18 touchdowns in the first half and Jim Preas kicked all 18 extra points.



CLOVER PARK SOPHOMORE, Bert Wells, is said to be one of the best defensive men on the floor. A one year letterman, Bert was injured, not seriously, in last night's tilt with the Loggers. The Lutes won by the score of 55 to 52.

man yanked the starting five in favor of the second string. The subs, led by Berentson, Huffman, and Bergeson, battled back to take a 27-26 half-time edge.

Jack Johnson came up with the feature of the evening. Five seconds before the half ended he canned an unbelievable two-hander from the center circle. The crowd loved it.

The Lutes pulled away as the second half opened by virtue of buckets by Bert Wells and Harry McLaughlin. The Parklanders were never again headed.

Gene Lundgaard topped Lute scorers with 14, followed by Huffman and Hefty with eight each.

The PLC Gladiators opened Evergreen Conference hostilities last week end with an even split on their trip north.

The Thunderbirds of the University of British Columbia snapped the Lutherans' winning streak of nine in a row with a 50-44 upset Friday night in Vancouver, B. C.

The ball-hawking, dead-eye Canadians took an early lead of 2-1 and were never headed. However, the Lutes did manage, in the second half, to come within one point of the Birds on five different occasions. But the Canadians, led by big John Forsyth and diminutive Reid Mitchell, had the punch when it counted.

Forsyth collected 13 for the Canucks while McLaughlin got 11 for the Lutes.

Returning to Bellingham on Saturday the Lutes climbed back on the victory wagon with a thrilling 53-51 Evergreen Conference win over Western Washington College of Education.

Harry McLaughlin, who never fails to shine when the Gladiators meet the Vikings, did it again—24 points this time.

To Harry also goes credit for the winning bucket. With the score tied at 51-51 and 30 seconds remaining, Mr. McLaughlin faked out his guard and dunked the crucial two-pointer.

In the 1904 Olympics, the United States won every one of the track and field events and also won every boxing event.

D. Eicher EWCE Leading Scorer

Dick Eicher of Eastern Washington was an unheard of basketball player last year, but this year he is leading scorer in the Pacific Northwest.

Big Dick has rolled in 235 points in 15 games to top Washington State's outsize sophomore, Gene Conley, by one field goal. But Gene Conley has played one more game than Eicher and the Eastern Washington ace has a one-point edge in average, 15.7 per game to 14.7 for Conley.

Harry McLaughlin, the Pacific Lutheran scoring machine, led them both in per-game average with 15.9 but had played in only 12 tilts at the close of last week.

The scoring leaders:

PACIFIC NORTHWEST				
	G	FG	FT	TP
Eicher, EWCE	15	85	66	236
Conley, WSC	16	84	66	234
McLaughlin, PLC	12	75	41	191
Peterson, WWCE	12	70	41	181
Burke, EWCE	15	73	35	181
Evans, Gonzaga*		82	10	174
Hoskins, Se. Pac.*		62	41	165

*Total amount of games unknown.

During the last ten years the average score in basketball has jumped from 56.9 to 90.1 per 1000 games. The average number of fouls in the same period has gone from 20.8 to 34.9 per game.

Lutes Defeat Seattle Chiefs

A hard-running Pacific Lutheran College basketball quintet, despite a sub-par performance by scoring ace Harry McLaughlin, dumped Seattle University 61-49 Tuesday night in Memorial Gymnasium.

Although McLaughlin contributed only five tallies for the evening, the Lutes, due largely to a sparkling performance by second and third stringers, bounded back from an early game deficit and ran the Chieftains to defeat.

The Seattleites held leads of 9-5 and 13-8 before Coach Marv Harsh-

HANSON'S JEWELERS
OUR NEW LOCATION: 918 BROADWAY
PERFECT DIAMONDS — AMERICAN-MADE WATCHES
FINE JEWELRY
Telephone: MARKET 8355



George and Harry's New Haven, Conn.

Yale News
Dramat Observes 50th Anniversary At Dinner Today
Yale Varsity Eight Defeats Badger Crew By Four Feet;
All Eli Shells Win At Derby; 150's Lose At Princeton

In New Haven, George and Harry's is a favorite student gathering spot. At George and Harry's—Coca-Cola is the favorite drink. With the college crowd at Yale, as with every crowd—Coke belongs.

Coca-Cola
REG. U.S. PAT. OFF.
"Coke"
REG. U.S. PAT. OFF.
5¢

Ask for it either way . . . both trade-marks mean the same thing.

BOTTLED UNDER AUTHORITY OF THE COCA-COLA COMPANY BY THE COCA-COLA BOTTLING COMPANY, TACOMA, WASH.

© 1949, The Coca-Cola Company

PARKLAND BARBER SHOP
MARSH and KNUDTSON

WEDDINGS - CORSAGES
FUNERALS
Stella's Flowers
Artistry in Flowers
Parkland Center GR. 7863

Raymond Electric Company
Engineers - Contractors
813 Pacific Ave. BR. 1712

Got a date? Want to go to the game?
But the car won't work? . . . See

LEWIS RICHFIELD SERVICE

GARFIELD AND PACIFIC

GR. 8688

THREE-DAY SERVICE
on Laundry, Cleaning and Repairing

24-HOUR SERVICE AT PLANT

Fashion Cleaners

PICK UP and DELIVERY

GA. 3372

3820 Yakima

TRY FLETCHER'S — *The Vets Do*

Groceries -- Meats -- Vegetables
Frozen Foods

FLETCHER'S MARKET

FREE DELIVERY

GRanite 8550

Rangers, Savages To Come to Town

The Harshmen play host to X. Nady's Rangers in Memorial Gymnasium, Saturday, January 14. Although our first two games with the Martian squad were won handily, they showed decided improvement the last time out. The St. Martin's boys would like nothing better than to defeat the Lutes and they usually play their best ball against us. Dean Dion and Bill Sullivan are scoring threats that could cut loose at any moment and dim Lute hopes in the Evergreen race.

Next Thursday, January 19, finds the Savages of EWCE stalking into town. Thus far this season the Savages have looked like a powerhouse. The University of Idaho bowed to them by a 21-point margin while Montana and Washington State also were trounced badly by the high scoring Eastern quintet. Dick Eicher, junior, forward, has averaged nearly 17 points a game and is number 11 in the nation's scorers. His 6 feet, 4 inches of altitude aid a great deal on the boards while his defensive play is also good, as shown by the fact that he held WSC's brilliant center, Conley, to one field goal.

Gene Burke, 6 foot, 4 inch center, and Dick Luft, 6 feet, 2 inch guard, form the nucleus of a fine ball club. W. B. (Red) Reese, in his sixteenth year as Eastern's mentor, has a multitude of talent and has every intention of garnering Evergreen laurels. He has brought home the title nine times before and has led his teams East to Kansas City three times.

FIRST BASKETBALL RULES

The first set of rules for basketball were established in 1891, and could be played with from 3 to 40 players, but only had nine positions, i.e., 1 goalie, 2 guards, 3 centers, 2 wings, and 1 home man.

Patronize Your Advertisers

Tune In:
Your Own
CAMPUS
RADIO THEATRE

- COLLEGE OF PUCET SOUND
- PACIFIC LUTHERAN COLLEGE
- STADIUM HIGH
- LINCOLN HIGH
- SUMNER HIGH
- PUYALLUP HIGH
- VISITATION VILLA
- FEDERAL WAY HIGH
- CLOVER PARK HIGH
- ST. LEO'S HIGH
- ST. JOSEPH'S COLLEGE OF NURSING

Every Wednesday
During School Year
6:30 P.M.
1360 ON
KMO YOUR DIAL
*Rebroadcast — KTBI
9:30 A. M. Saturday
Sponsored by
Your TACOMA CITY LIGHT

Test Schedule

FALL TERM 1949

All examinations will be held in regularly scheduled classrooms, with the exception of Freshman Composition 1, Religion 1, 2 and 13, and Student Teaching.

Monday, January 23

- 7:55—First period classes meeting M.W.F. or M.W.
- 10:20—Third period classes meeting T.Th., T.Th.F. or T.F.
- 1:00—Life of Christ Sa, Rm. L-104.
Life of Christ Sb, Rm. S-108.
Life of Christ Sc, CB.
Hist. Christian Ch. Sa, M-109
Hist. Christian Ch. Sb, M-215
Hist. Christian Ch. Sc, M-216
- 2:30—Intro. to Old Test. Sa, L-104
Intro. to Old Test. Sb, S-108
Intro. to Old Test. Sc, CB

Tuesday, January 24

- 7:55—Fresh. Comp. 1, all sections:
Sa, SdS-204
Sb, ShS-108
Sc, SfL-104
Se, SiL-117
Sg, SjCB
SkM-109
- Student Teaching:
176aM-229
176bM-216
176cM-111
- 10:20—Third period classes meeting M.W.F. or M.W.

- 2:00—Fifth period classes meeting M.W.F. and M.W.

Wednesday, January 25

- 7:55—First period classes meeting T.Th.F., T.Th. or T.F.
- 10:20—Fourth period classes meeting M.W.F. or M.W.
- 2:00—Fifth period classes meeting T.Th.F., T.Th. or T.F.

Thursday, January 26

- 7:55—Second period classes meeting T.Th.F., T.Th. or T.F.
- 10:20—Fourth period classes meeting T.Th.F., T.Th. or T.F.
- 2:00—Sixth period classes meeting T.Th.F., T.Th. or T.F.

Friday, January 27

- 7:55—Second period classes meeting M.W.F. or M.W.
 - 10:20—Sixth period classes meeting M.W.F. or M.W.
 - 2:00—Seventh period classes meeting M.W.F., or M.W., T.Th.F., T.Th. or T.F.
- Examinations for all special classes will be given during the regular class time during examination week

Orchestra to Play At Temple Theater

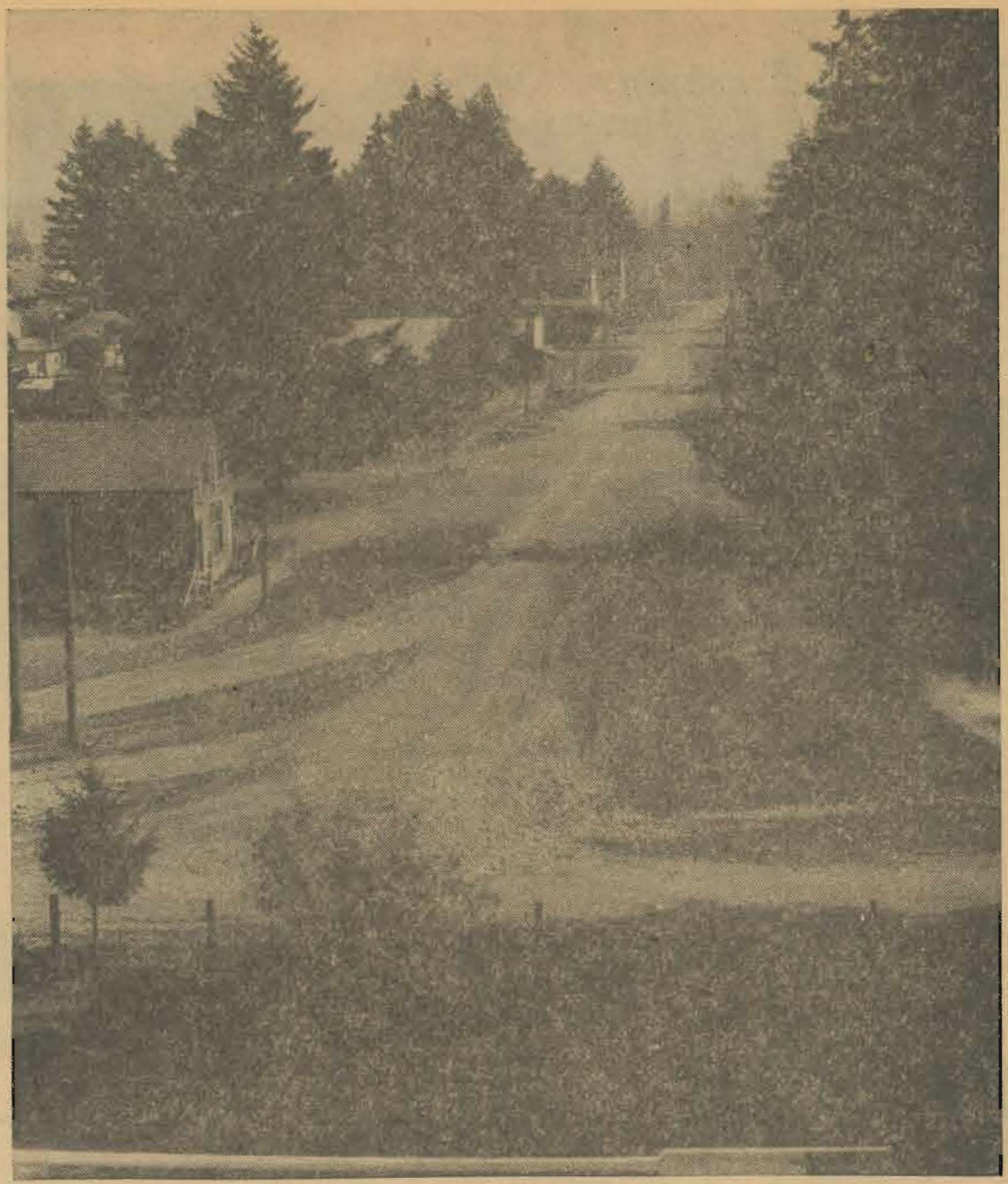
Washington's Symphony Society Orchestra will be presented by the Tacoma Philharmonic Inc., on January 18, Wednesday, at the Temple Theater.

The orchestra, directed by Eugene Linden, will play the following selections: the overture to "Oberon," by von Weber, Debussy's "Afternoon of a Faun," "Till Eulenspiegel's Merry Pranks," by Richard Strauss, and the Symphony No. 3 in E Flat, the "Eroica," by Beethoven.

On August 25, 1936, Gene Moore, Baxter Jordan, and Tony Cuccinello, all members of the Boston Braves, hit two doubles each in the first inning. Ted Williams drew 107 bases on balls in his first season in the big leagues.

Patronize Your Advertisers

S. U. SNACK BAR
The Best for the Least in Short Orders
MRS. JACKSON, Proprietor 8 A.M. TO 4 P.M.



PICTURE YOURSELF walking down the street 30 years ago with your girl friend. Slogging through the mud on your way to the Post Office to pick up the mail. Then swimming across the street to the Donut Bar to have a good cup of coffee. But, this street was not paved until 1947, so a lot of the students and faculty do remember when it was a muddy thoroughfare.

Intramural Scheduled For Champ Playoffs

The intramural program is running at full steam ahead, and it looks like it will be a good year for basketball. The teams are playing this week and next week in a round robin schedule.

The top three teams of each league will enter into a series composed of two leagues of five and four teams. Following the completion of the two leagues, the top three teams will enter into a single elimination to determine the championship.

Schedule for today and next week:
Friday 13, 1950—4:00, Blackhawks No. 1 vs. Beavers No. 2; 4:45, 49'ers No. 2 vs. Braves No. 2.

Thursday, 19th—4:00, Blackhawks No. 1 vs. 49'ers No. 2; Eagles No. 1 vs. Beavers No. 3; 4:45, Falcon No. 1 vs. Blackhawks No. 2; Tigers No. 2 vs. Braves No. 2.

Friday, 20th—4:00, Blackhawks No. 1 vs. 49'ers No. 2; Braves No. 1 vs. Falcons No. 3; 4:45, Blackhawks No. 2 vs. Eagles No. 1; Tigers No. 1 vs. Falcons No. 2; 5:30, 49'ers No. 1 vs. Saints No. 1; Tigers No. 2 vs. Beavers No. 2.

When Don Newcombe of the Dodgers shut out the Cubs in 1949, by the score of 2-0, he didn't throw a called strike in the first seven innings and only four in the whole game.

Betrothals Pulled; Rings Among Lute

Jack Guyot and Ruth Tvedt were married New Year's Eve in Ephrata by Reverend Raymond Pflueger. The bride's father, Rev. K. N. Tvedt, retired missionary to China, spoke.

During Christmas vacations in Minot, North Dakota, Ted Lund and Carol Reishus were married and are now at home in Tacoma.

Among the holiday engagements were those of Sue Carpy and Burt Wells, Tacoma; Donna Hanson and Ivar Eines, Seattle and Ketchikan; Dorothy Martenson and Jerry Bender, Milwaukee, Oregon; and JoAnn Grambo and Pat McMurtry, Tacoma; Faye Olsen and Jim Williams, Olympia.

December 26 was the date of the marriage of Harry Peterson, Yelm, to Geraldine Hjelm of Olympia. The ceremony was solemnized in Olympia.

Patronize Your Advertisers

Pochel Distributing Company
140th & Pacific GR 8624
MOBIL
STOVE & DIESEL OILS
Automatic Fill-up Service
Westinghouse and Frigidaire Appliances

Rev. Nodtvedt Back From U. of Chicago

Rev. Magnus Nodtvedt, professor of history, returned to Parkland on Thursday. He is on leave of absence this semester to complete requirements for his doctor's degree from the University of Chicago. Writing a thesis on the "Hauge Movement," Rev. Nodtvedt has been studying in Chicago and St. Paul since June. The degree will be awarded at the Chicago commencement in March.

ON THE CAMPUS
For Your Convenience . . .
LaCrosse
Printing Company
On the Campus, Old Chapel Bldg.

Mt. View Cleaners
FREE PICK-UP & DELIVERY
ON LAUNDRY AND DRY CLEANING

STOP AT
VERN'S
For
DELICIOUS HAMBURGERS
HOT DOGS -- JUMBO MILK-SHAKES -- FRENCH FRIES
at
Ninth and Pacific

Net Cost . . .
Low

life insurance is issued to Lutheran Men, Women, and Children ages from birth to 65. The members of Lutheran Brotherhood OWN the society, and they ALONE receive the earnings. There are NO stockholders.

Lutheran Brotherhood

Legal Reserve Life Insurance for Lutherans

MINNEAPOLIS 2,

HERMAN L. EKERN, President

MINNESOTA

GARFIELD STREET
Phone Granite 5221

JESS W. THOMPSON
NYER URNESS

PARKLAND
Washington

Build Your
Estate Now!



Your Future
Starts Today