

Pacific Lutheran University
Tacoma, Washington

THE MOORING MAST

September 15, 2000
Volume LXXVI, No. 1



Photo by Nisha Ajmani

The \$3.5 million to \$3.7 million remodel of Xavier began August 1 and should be completed in July 2001. The project, funded by donations to the university, will restore some of the building's original charm while bringing it up-to-date with modern technology.

Remodelling project revives Xavier, relocates faculty

BY ERIC RUTHFORD
Mast copy editor

Helen Nordquist has seen the large room on Xavier Hall's second floor go from the library's well-lit, elegant reading room to a dark lecture hall with a stage that blocks the sun from getting in.

"They really mucked up that room when they put that stage there. It was supposed to be a class-A teaching room, but I don't think anyone stood on that stage," said Nordquist, a 1957 PLU graduate who is now the administrative assistant for the Q Club scholarship program.

"It had a beautiful bay window at the end. It was a very elegant room, and I think it will be again," Nordquist said.

If all goes as planned, Nordquist will see the room restored to its original character and the bay window exposed again when a remodeling project on Xavier is completed in July 2001. The room, also known as Xavier 201, will be named the Nordquist Lecture Hall in honor of her husband, history professor Philip A. Nordquist.

David Aubrey, the vice president of Development, said a group of 20 to 25 alumni and other "friends of the university" got together and donated \$1 million to name the room.

Crews have been gutting Xavier since Aug. 1, and removed 90 percent of the building's asbestos during the first two weeks of August, said Plant Services Director Dave Wehmhoefer.

He said the crews used filtration systems that kept the asbestos from getting into the outside air. The remaining 10 percent of the asbestos is in difficult-to-reach areas, and it will be removed later on in the project.

The building now stands as an almost-empty shell. The number of faculty offices will increase from 35 to 39, and the offices will remain about the same size they were before, dean of social sciences Dave Huelsbeck said.

When the remodeling project, which will cost between \$3.5 million and \$3.7 million, is complete, Xavier's two large classrooms, two smaller seminar rooms, and the large lecture hall on the second floor of the east side of the building will all be available for use.

Sheri Tonn, the vice president of Finance and Operations, is in negotiations with the contractor, Absher Construction, on a final price for the project.

She also said the Executive Committee of the Board of Regents will meet in the next
See XAVIER, page 12

Relocated offices

- Anthropology, economics, history, and political science professor offices are now in Eastvold.

- Psychology professors have moved to Eastvold, with the exception of Robert "Mike" Brown, Christin Moon and Dana Anderson, who are in Ramstad.

- Social work and sociology faculty members are in Administration 103, where the Development office used to be housed.

- The Development office has moved into rented office space at 12165 Pacific Ave. The working title for these offices, located next to the Baskin-Robbins, is "Far East."

- Marriage and Family Therapy is the only social sciences division that has not moved this year. They remain at East Campus.

- Despite the location changes, only one professor's office phone number changed. Professor Maria Elena Lara is now at x7395.

Annual queer conference canceled amid confusion

BY JENNI DILLON
Mast news editor

The 5th Annual Northwest Regional Queer Conference, scheduled for spring 2001 at PLU, was canceled over the summer amid a mass of lingering confusion.

PLU's gay/straight alliance organization, Harmony, placed a bid last spring to host the conference on campus, and received initial support from university administration. As students left campus in May, plans for the conference were underway.

As they returned in the past weeks, however, many learned for the first time of summer complications that led to the conference's cancellation.

According to Beth Kraig, Harmony's faculty adviser, several reasons have been cited for the unexpected cancellation, ranging from unmanageable plans to concerns regarding the word *queer* in the title.

Laura Majovski, vice president of Student Life, explained that the administration choice to cancel the conference stemmed from a lack of organization and from unmanageable

plans.

Majovski said one of the primary students involved with the conference planning decided not to return to PLU this fall, leaving a gap in communication.

"It is canceled because it became unmanageable and because the student leadership is not returning to campus."

--Laura Majovski,
vice president of
Student Life

In addition, she explained that the size and scope of the proposed conference exceeded the university's capabilities.

"It is canceled because it became unmanageable and because the student leadership is not returning to campus," Majovski said.

Kraig, however, said she feels that the complications are not significant enough to warrant complete cancellation of the conference.

"I still think the misunderstanding that arose over the summer could be resolved significantly at this stage," she said.

For one thing, Kraig said that the proposed size of the conference was miscommunicated and misunderstood.

"The big plans were what the university was convinced was the only possibility," Kraig said.

"My own view is that as with many things, people start out with big ideas, then they scale them down to match with their actual resources."

She explained that while the Queer Conference is an annual conference, it is up to the host university to design each year's event.

"It doesn't have an imposed format," Kraig said. "The name stays the same for identification."

And while one student leader did choose not to return to campus, Kraig and other Harmony members remain dedicated to continuing the organization and

planning of the conference.

In light of those facts, Kraig suggested that other factors may have played a role in the cancellation.

While Majovski said that confusion over connotation was not

"I think a lot of responses may have been given by those without the knowledge or experience to address the concerns."

-- Beth Kraig,
Harmony adviser

a major reason for cancellation, Kraig said, "It seems the word *queer* threw some people; people thought it was a bad word."

In fact, she explained, in academic use, the word *queer* refers to the entire spectrum of gay, lesbian, transsexual and bisexual individuals, as well as heterosexual individuals who deliber-

ately make themselves advocates and allies for sexual minorities.

"We are an academic institution," Kraig said. "If someone doesn't know what a word means, they should ask someone who knows."

Kraig said she was never asked about the meaning of the word, or about any other concerns over the summer. It is this lack of communication that she said she found most troubling.

Kraig said that in June Majovski suggested postponing the conference from spring to fall 2001.

The next thing Kraig heard, however, wasn't until mid-August, when she was told the administration had canceled the event.

"I think a lot of responses may have been given by those without the knowledge or experience to address the concerns," Kraig said.

"This absolutely shows me we have some big gaps in dialogue."

See QUEER, page 12

Sidewalk Talk

What do you think of the changes in the UC Commons?



"I don't like that they make you leave your trays on the tables, it makes me feel like a slob."

Sarah Hatley

"What changes?"

Olga Disko



"The goal of my first two years at PLU has been accomplished: NEW CEREALS."

Mike Johnson

"It's a good central place to meet people."

Michael Fox



"I haven't eaten there yet, but anything has got to be better than last year."

Jake Beranek

"I don't like that they make you leave your trays on the tables because it creates a pigsty."

Heidi Phillips



Campus Events

TOGA TOGA TOGA!!

First week of classes giving you the blues? Got that summer-just-got-over-and-I-already-have-homework-itch? Need to let loose? Come on and get down with your Greek self! Hinderlie Hall is hosting the first all-campus dance of the school year Saturday night in the Hinderlie main lounge. Don your toga and get your Greek on from 8 p.m. to midnight! For more information contact Justin McGregor at x8631.

SEE YOU AT THE POLE

See You at the Pole will be taking place Wednesday, Sept. 20. Anyone interested in joining together with fellow students in prayer for their school and their nation should meet at the flag pole in Red Square at 7 p.m. For more information call Tim Rothlisberger at x8407. Event sponsored by National Network of Youth Ministries and Residence Hall Association.

FSU ICE CREAM SOCIAL

Interested in Feminist Student Union? Do you want to know what feminism is all about? Then join current members of Feminist Student Union for an ice cream social on Tuesday, Sept. 19 at 7 p.m. in the Women's Center. Come join us as we plan for the upcoming year. Please bring your own bowl and spoon. Any questions? Call Anna at x2023 or Kat at x8678.

UNIVERSITY CONGREGATION MT. RAINIER HIKE

The annual University Congregation Mt. Rainier Hike will be on Sunday, Sept. 24. Participants will leave campus at 1 p.m. and return around 9 p.m. If you are interested in attending sign up no later than Sept. 18 for lunches and carpool information. To sign up call x7466 with your name, PLU I.D. number, e-mail address and phone number or stop by Campus Ministry.

PROBLEM SOLVING LECTURE

Professor George Bodner of Purdue University will visit campus Sept. 22 to deliver a lecture on "Problem Solving: The Difference Between What We Do and What We Tell People We Do." The lecture will be in Leraas Lecture Hall at 7 p.m. The chemistry department will host a pizza dinner prior to the lecture in the Rieke lobby at 6 p.m. The cost for the dinner is \$7 (\$4 for students). R.S.V.P. with Toni Curtis at x7530 if you're interested in the pizza dinner.

Campus Leaders:

Do you want your club or organization and its meeting time listed on page two of The Mast? Then give Kat a call at x4362

Have an upcoming event that you want listed on the Campus Events section of page two of the Mast? Give Kat a call at x4362. All submissions must be called in or brought to The Mast office in the UC Mezzanine by Monday at 6 p.m.

Clubs and Organizations

Harmony (Gay/Straight Alliance) UC 208 Tues. 12-1 p.m.

South Hall opens to students

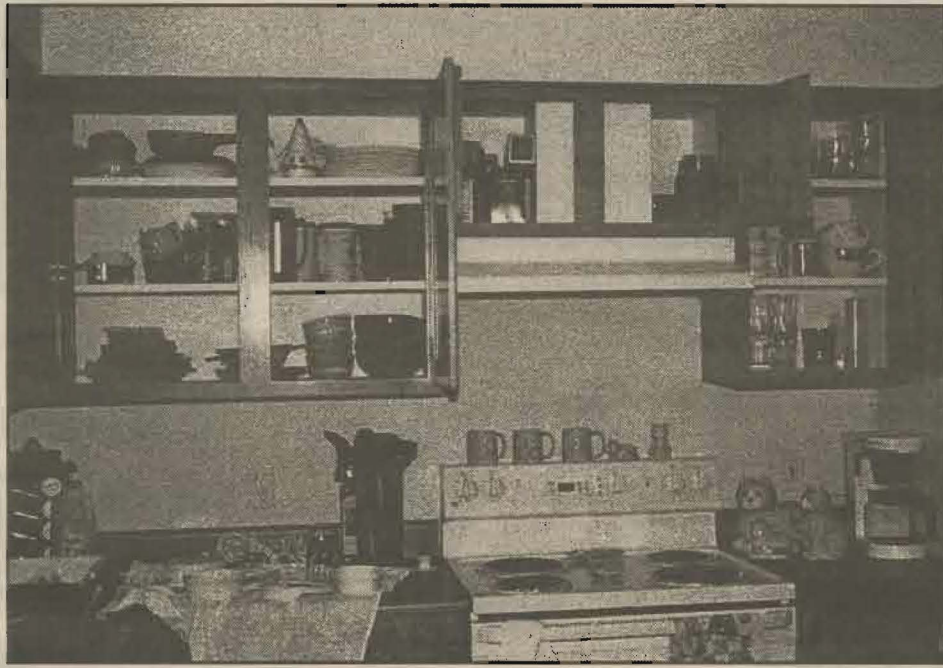
BY KELLY KEARSLEY
Mast editor in chief

Walking through the front doors of PLU's new South Hall is a far cry from walking into Pflueger, Foss or any of the other student resident halls. Of course everything is brand new, of high quality and beautifully designed, but there is an entirely different feel to this hall—a feel that the residents appreciate.

"It doesn't feel like a dorm at all," Junior Krista Swenson said. Community assistants Brianne McQuaig and Sara Wolbreck agree that South Hall is a unique community.

"There are people from every dorm, different nations, juniors, seniors and married couples all living here," McQuaig said, adding that it is a challenge for community assistants to come up with programming for a more mature audience.

"We are not going to be having GYRAD's (Get Your Roommate a Date)," laughed Wolbreck. "But we are looking at doing programs like Sundaes at South, where students can hangout, have ice cream and talk." Also in the plans for programming are a Women's Health Series, and an Appetizer Open



Unlike other campus residence halls, South Hall includes private kitchens in each apartment. Photo by Leah Sprain

House where residents leave their doors open and offer treats as a way to meet their new neighbors.

McQuaig also said there is a possibility of programs dealing with job interviews,

resumes, and other issues affecting upper-class students.

New Resident Community Director, Matt Lamsma, said he is excited to start traditions and build the unique atmosphere of South Hall.

"Our philosophy is that we are building a community on a large scale, with people who really want to be here," he said. He noted that the students in South Hall are unique, many have campus leadership positions and all are excited about living there and remaining on campus.

"We don't anticipate a lot of problems," Lamsma said.

The same goes for the building—there have been few glitches in the construction, and things are going smoothly except for some missing blinds and late Coke machines, said Lamsma.

"Everybody has been impressed with the building," Lamsma said.

Resident Krista Swenson summed it up in four words, "It's like a hotel."



South Hall offers apartment-style housing with the benefits of an on-campus community. Photo by Leah Sprain

Community Events

Puyallup Fair offers host of activities

The 100th annual Puyallup Fair will run from Sept. 8 - 24 at the Puyallup Fairgrounds. Highlights of the fair include animals, agriculture, carnival rides, exhibits, food and entertainment.

This year's fair also includes a "Survivor" contest, mimicking the popular summer reality television show "Survivor."

Admission to the fair is \$7.50 for adults and \$4.50 for youth ages 6 to 18. Parking costs \$5 per day at official Fairground lots.

For more information, visit the fair's website at www.thefair.com or call the 24-hour hotline at (253) 841-5045.

Pierce County AIDS Walk raises funds

Walkers will gather at Kandle Park in Tacoma September 23 for the annual Pierce County AIDS Walk. Participants follow a mostly flat 4.9 mile route through North Tacoma and the Proctor business district to raise money through the Pierce County AIDS Foundation.

The foundation distributes proceeds to five organizations providing HIV and AIDS prevention, education, or care services in Pierce County.

Registration for the walk begins at 9 a.m. Saturday, Sept. 23 at Kandle Park, located at the corner of North 26th and North Shirley, between Pearl and Orchard Streets.

For more information, visit <http://members.aol.com/pierceaids> or call call (253) 596-0858.

NewsWire

News from beyond the Lutedome

GOP commercial accused of subliminal messaging

A GOP commercial will be removed from the airwaves this week amid allegations of subliminal messaging about Al Gore.

The commercial, comparing the Medicare plans proposed by each presidential candidate, flashes the word "bureaucrats" across the screen. In one frame, just as the announcer is denouncing Gore's plan, the word "RATS" appears in large letters on the screen.

Synagogue reopens in Poland's Auschwitz

A piece of everyday Jewish life returned to Oswiecim, Poland this week. The town, known to most of the world by its German name, Auschwitz, has been synonymous with Nazi genocide for decades.

Tuesday, however, officials reopened the town's synagogue, the first such place of worship in the town since the end of World War II.

The Netherlands approves same-sex marriage

Lawmakers in the Netherlands approved legislation Tuesday providing same-sex couples rights beyond those offered in any other country. The new legislation gave same-sex couples the right to marriage, as well as related rights including divorce and adoption.

Biologist declare African primate species extinct

For the first time in centuries, a member of the primate order, to which human beings belong, has become extinct.

Biologists say that the Waldron's red colobus is just the first incident in what they foresee as a growing stream of extinctions of West African primates and other wildlife.

The last primate extinction documented by science occurred in the early 1700s.

University Postings

- September 22 -- Last day to register or add classes; last day to drop a single class with a full refund.
- September 25 -- Date to start obtaining an instructor's signature to withdraw from a class (no tuition refund -- W grade; \$50 administrative fee per transaction).
- September 25 -- Institutional and federal (other than FFELP) aid will be credited to students' accounts.
- October 2 -- FFELP (subsidized, unsubsidized, and PLUS) loan funds will be received by PLU from students' selected lenders.

You will face
many challenges teaching
your class to read.
Assuming you overcome
the challenge of not
having any books.

PEACE CORPS

How far are you willing to go to make a difference?

Peace Corps Visits PLU!
Tuesday, September 26

General Info Meeting:
University Center, #210
3:00 - 4:00 pm



www.peacecorps.gov • 1-800-424-8580

Administrative decision denies Harmony chance for input, suggestions

The Northwest Regional Queer Conference scheduled to be at PLU next spring was unexpectedly canceled this summer by PLU's administration. Eliminated for reasons not fully understood, the conference would have offered PLU a chance to prove itself as an accepting and diverse institution, an institution for the 21st century.

But the issue that concerns *The Mast* is not only the cancellation of such a conference, but the method in which the administration chose to communicate (or not communicate) this large decision to those responsible for planning the conference.

What happened, according to both parties, is that the planning for the event was a cooperative effort between the administration and Harmony, and the cancellation of the event was an administrative decision made without Harmony. However, they were kindly informed after the fact.

What we have here is a severe case of how things look versus what they really are. What it looks like that the administration tiptoed across the sensitive subject of canceling the event, and did the dirty deed without ever notifying Harmony that the conference was up for cancellation or giving them a chance to make compromises and suggestions to save the conference. Maybe they hoped we wouldn't notice, maybe they thought we wouldn't care, but their callous lack of simple consideration to the members and advisers of Harmony is an affront to all clubs on this campus.

The Mast would feel a little put out if we had scheduled a journalism conference, worked and planned on it for a summer and returned to school to find it canceled before we could even offer input. *The Mast* assumes that other campus groups would feel the same, and yet we have a hard time believing that is how the administration would deal with canceling a journalism conference.

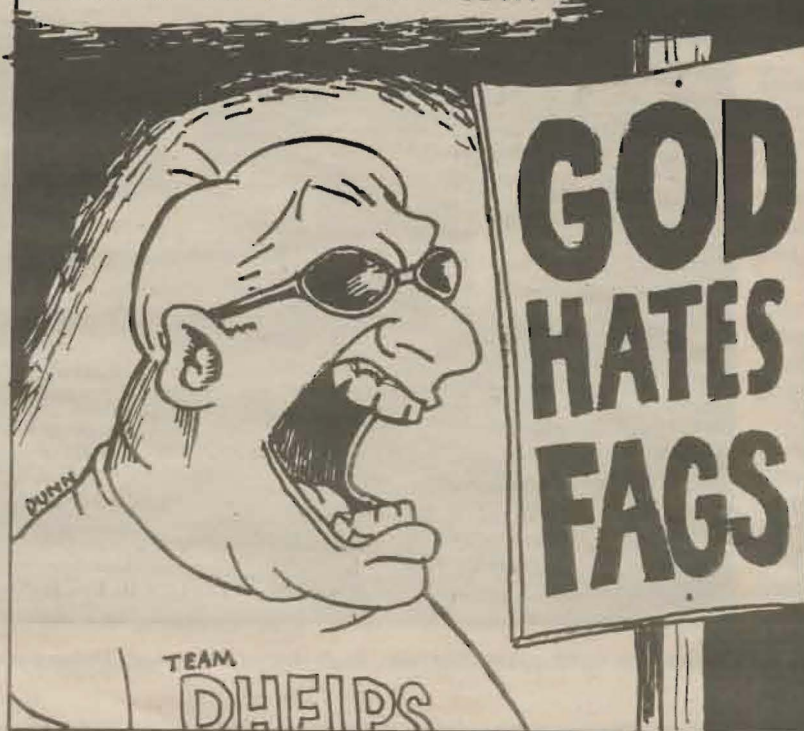
On an ironic side note, both the provost's speech at the Fall faculty conference, and the president's address at convocation dealt with promoting diversity and *dialogue* on this campus with minority people. How nice, but the timing seems a little late.

The lack of effort to create a conversation between all parties involved with the Northwest Regional Queer Conference while major decisions were being made suggests an administration that would rather let sensitive subjects on this campus lie, than approach and deal with them in a mature manner that *The Mast* believes every organization on this campus deserves. And not only that but it appears downright sneaky.

It is fine and dandy to talk the talk of a campus that is welcoming, accepting and open to all people, but until actions and real conversations, off the podium and outside interviews, follow nothing will change.

Kelly Kearsley
Mast editor-in-chief

SUNDAY ON CAPITOL HILL...



* EDITOR'S NOTE:

WE APOLOGIZE, BUT THE WORDS, "HATES FAGS" IN THE SIGN TO THE LEFT SHOULD READ...

"PROBABLY DOESN'T WANT THE FIVE MOST IGNORANT PEOPLE ON EARTH SPEAKING FOR HIM"

THANK YOU.

Campus group not what it seems

Freshmen: Before you settle down and try to carve out a place for yourself at PLU through a variety of clubs and organizations, listen to what I have to say.

As a senior I can definitely say that college is about defining who you are. It's about getting mad at the government, the status quo, and the world... and then changing it in small ways. It's about challenging basic assumptions. And PLU clubs and organizations offer and foster all these opportunities - you just have to get involved.

But, be careful what groups you join. Which comes to my warning about The Well: a Christian group who worship together each week to make themselves feel really good about being Christians. So what's wrong with that? What's wrong is The Well embodies the opposite of everything that makes a good organization and college experience. They are a conservative religious group-meaning they are open to new ideas and discussion only if it fits into their neat little box of everything they know to be true. They are hypocritical group that spends one evening a week preaching a lot about love and acceptance, but can't seem to practice it in real life.

Example: The Northwest Regional Queer Conference (NWRQC). In early May of last semester the ASPLU senate approved Harmony's request to host the fifth annual NWRQC. While ASPLU, Student Life, and Campus Ministry support the conference, Evan Thomas, a worship leader for The Well, spoke out against the conference in *The Mast* with shocking intolerance.

Evan said he couldn't understand how PLU could host the NWRQC at a university founded on "Christian principles." What "Christian principles" is he referring to? What

could be more Christian than love and acceptance? Perhaps he's referring to the conservative Christian principles of condemning others who are different.

Evan also quotes the Bible to condemn homosexuality as a "sinful lifestyle and a choice." Haven't there been enough lessons about taking the Bible literally? The "literal" interpretation of the Bible was, and is, used to justify anything (like slavery!).

I am surprised that The Well openly denies the humanity of other people. Make no mistake about it - that is exactly what they are doing. And I am equally surprised that The Well and their blatant intolerance is condoned on a college campus.

Are there members of The Well who feel differently than Evan? Did any Well members publicly voice their opposition to Evan's statements? I can only remember The Daily Flyer condemning Evan's words - nobody else. Does silence equal compliance in this case?

Sexual minorities don't need The Well's prayers to be "freed from their sin." If they need anything from The Well, they need its members to quit hiding behind their Bible quotations and act not just like Christians, but more importantly, like human beings.

So be wary, freshmen. Be wary of a seemingly "well" meaning group. Be wary because The Well will not offer you the opportunity to grow as person and to question assumptions.

What The Well ultimately offers is hypocrisy, the status quo, and intolerance. Is that something you want to be a part of? Is that what you want out of college?

Shannon Thomas
PLU student

Editor's note: The Well is now known as Jam62. Letters to the editor do not represent the Mast or its staff. It is a student paper and all voices and opinions are welcome; if you wish to write to the Mast look under the policies section below for details.

MOORING MAST 2000-2001 STAFF

Editor-in-Chief
Kelly Kearsley

News Editor
Jenni Dillon

Sports Editor
Andy Bentz

A & E Editor
Erica Rische

Page 2 Editor
Kathryn Wood

Photo Editor
Nisha Ajmani

Photo Assistant
Ty Kalberg

Copy Editors
Eric Ruthford
Shannon Spahr

Advertising Manager
Thomas Major

Business Manager
Nikky Hammond

Circulation
Nikky Hammond

Web Developer
Erica Developer

Columnists
Fritz Kilcrease
Kara Larson
Sarah Sanders
Maggie Santola
Kristin Sluiter
Matt Vancil
Editorial Cartoonist
Mark Dunn

Senior Reporters
Reporters
Interns

Photographers
Leah Sprain
Bree Bales

Adviser
Joanne Lisosky

POLICIES

The Mooring Mast is published each Friday by students of Pacific Lutheran University, excluding vacations and exam periods.

The views expressed in the editorials and columns reflect that of the writer, and do not necessarily represent those of the PLU administration, faculty, students, or the Mooring Mast staff.

Letters:

The Mooring Mast encourages letters to the Editor. Letters need to be submitted to the Mooring Mast office

no later than 5 p.m. the Monday before publication.

Letters without a name and phone number for verification will be discarded.

Letters should be no longer than 250 words in length, typed and double-spaced.

The Mooring Mast reserves the right to refuse any letter. Letters may be edited for length, taste and errors. Letters are printed in the order they are received.

The Mooring Mast can be reached at (253) 535-7494 or mast@plu.edu.

Is regression an option? Life in grown-up world not that fun

By the time this column is published, school will have been in session for a week. We'll already have homework assignments, and we'll already know if we like our professors, if we have friends in our classes, if it really is that hard to make the walk from the Administration building to Rieke in 10 minutes.

But as I write this, there is still a week of free nights, of empty backpacks, of summer. People are just starting to trickle into the dorms; South Hall, dark and deserted all summer save the occasional flicker of a security guard's flashlight, finally has a happy yellow light in every window. Cars are filling the empty streets and parking lots, and PLU reminds me of a garden waking up from a long winter.

I can't help but feel a little wistful and wish everyone would go back home. A return to life at PLU means the end of summer, and this year it's not



Artichoke Maggie Santola

just any summer — it's my last summer as a kid. In just two more semesters I graduate and my summer will not be a "vacation" — it will be the beginning of 40-hour work weeks every single week for the next 40 years.

This was my first summer working a regular 9-to-5, Monday-through-Friday job — a grownup job. I thought it was going to be great — no weekends, no evenings, I'd have all the free time in the world! Well, I found out being a grown-up and working grown-up hours isn't so fabulous, a terrifying realization when grown-upness is imminent.

First of all, I am just as white

and pasty as when I finished my last final in May. I had no time for sunbathing during the week, and the weather seemed to time itself just right so that the clouds rolled in as I punched out on Friday, dissolving only when I returned to work on Monday. I can't help but think wistfully of the night job I held two summers ago, when I had all day to lounge about lazily in the sun until I turned brown as a bastard turkey.

Also, when working business hours, one realizes that they are called "business hours" for a reason — that's when all the businesses are open. This makes it difficult when you need to take care of any so-

called "business."

Need a refill on that allergy prescription? You have two options: you can make a mad dash to Rite Aid during lunch and pray that they won't mess up your insurance this time, all the while trying to eat yesterday's polenta pizza in the car without spilling sauce down your dry-clean-only shirt. Or, you can cut out of work early and make it up by coming in even earlier the next morning.

Then there's the long list called "things I never did this summer that I said I was going to do." I never started my novel, or finished decorating that picture frame, or went on that camping trip, or saw that one movie I wanted to see.

If I didn't have the time or energy to do that stuff this summer, what's going to happen when I'm old? What if I start going to bed at 9 p.m. like my mom does? What if I have kids and I have to spend all my free time changing diapers and

running back and forth to soccer practice in a big, ugly family car? Am I supposed to shove everything I want to do/see/accomplish into the allotted two weeks of vacation time a year?

Okay, so I can admit there were some good things about a grown-up work week: It is nice that you are guaranteed weekends off and that you know your schedule more than a week in advance. And I guess enjoying the summer sun from the confines of a cubicle will save me from skin cancer and wrinkles later on in life. Still, I love the school routine, where you are afforded hours of free time in between classes, or even entire afternoons off.

Graduate school is sounding better every day.

Maggie Santola is a senior majoring in English writing. She learned recently that the Rite Aid pharmacy is open until 7 p.m.

Advice to freshmen from someone who has seen it all — wink, wink

If you stand close enough to a freshman, you can actually hear the bubble burst.

You returning students know what I'm talking about: the Great Illusion. Every freshman suffers from it to some degree.

A lot of gals think high school relationships will last forever, when they more likely will last until November. The guys think all they need to get laid at college is a wink and a smile.

Guys, take it from a former freshman. To get laid at this university, you have to be engaged. And it can sometimes take upwards of three or four dates to spring the ring, so you won't be winking about anything until about November.

This may sound harsh, but it's something you need to hear. I'm not trying to make any enemies (I already have enough; you can tell). But nobody warned me when I first got here, so you folks are getting a break.

Everyone's college experience is different, and even though your resident assistants



No Apparent Reason Matt Vancil

have done their best to turn you into a horde of identical drones with your demeaning freshman tags (Neckties! How does Pflueger come up with something so pfresh and pfunny every single year?), your first year will be unique. I can't tell you how to ensure yourself a good year, but I can sure tell you what not to do.

First, a little advice for the ladies: forget all that crap from *Felicity*. College guys are buttheads, especially those who appear the most suave. Listen to the women in your dorm.

If Gal X says Guy Y is a sleazy bottom-dweller who will use you, then leave you, listen to her. She probably knows what she's talking about.

And don't for an instant think that though Guy Y has been a jerk in X number of relationships, that you will be the one who finally changes him. You won't. He's set in his ways.

Yes, lady freshmen, you are old enough to make mature decisions. But independence and experience aren't the same. Listen to your intuition. If an alarm bell goes off in your head, don't ignore it, even if he's really dreamy. He's only interested in one thing. Well, maybe two. And maybe a beer afterward.

Now for the guys. What advice could I give you from my four years of college? What secrets can I impart? What jewels of knowledge can I pass on? What sage advice can I give to

you, the young and foolhardy? I can sum it up in two words:

Shut up.

Sit back, relax, take it all in. This is an entirely new world, and it has a different pace than you're used to. If you clam up and spend enough time looking around, everything will come to you — your major, your social circle, your leisure activities. It takes a while (it took me three semesters), but if you shut up, look and listen, you'll find your niche.

The alternative is to do what too many freshman guys do, and that's embarrass yourself trying to impress the upperclassmen. This isn't Porkey's or Animal House (at least not on upper campus). If you act like it is, you'll annoy those you're trying to impress.

You'll also completely alienate the females of your incoming class, which pushes them toward those dangerous guys I mentioned since all the guys in their class are so immature.

And if you do end up turning off everyone in your dorm with

your crazy college antics, don't get angry and hole up in your room listening to a white-guy-insecurity band like Limp Bizkit or the Beastie Boys. It's unhealthy. You'd be surprised how many guys never grow out of this stage.

Look, everyone has an idea of what college is going to be like when he or she first comes here, and almost everyone's idea is wrong. The campus is its own personality, and it takes some getting used to. You'll no doubt discover this yourself.

And believe me, it'll be a lot easier if you listen to the returners. They've all been through it, most of the more than once, and some of them will be more than happy to help you through those first awkward semesters.

But stay away from those guys who wink and smile a lot. Ladies, I warned you about them.

Matt Vancil is a senior writing and classics major. Wink, wink.

Britney and boy bands threatening American music as we know it

Oops, she did it again. She sang the same song she's sung all along. Oooh baby baby.

I've had a bad taste in my mouth all summer. I've been a bit disillusioned, if you will, especially with the current state of American music.

My childhood memories are swirled with the original pop music geniuses, the true pioneers of the industry. Madonna, Michael and Janet Jackson, The Bangles, Debbie Gibson, and — ahhh yes — Tiffany. And I'm guilty, too, of at one point subjecting myself to a New Kids on the Block album, and several conversations with fourth grade girls as to which of the five boys from Boston was the cutest.

But honestly, I was never obsessed to the point of wanting a NKOTB tattoo. I can't imagine that I was mesmerized enough to tape myself dancing along with the videos in my own living room. *Total Request Live* didn't exist then, but if it had, never would I have sent my embarrassing videos to the East Coast where a smirking Carson Daly beamed the footage into suburban households nationwide.



Observation, Imagination, Exaggeration Kara Larson

A job in Tacoma retail has left me routinely tired and bored. So bored, in fact, that I have, only on occasion, found myself watching a program dubiously titled *SoCal Summer* on MTV. Admit it. All you returning college quasi-intellectuals know exactly what I am talking about. You're as guilty as I am. And let's be honest: it's more or less an all-day orgy of bad musical entertainment: samples of music and videos created by semi-talented beautiful young Americans for the sole purpose of making money.

But what makes me nauseous, more than Britney's red cat suit, even more than Christina's fake tan, is the fact that they've all succeeded. *Ninety-Eight Degrees*, *N'Sync*, *The Backstreet Boys*, *Mandy Moore*, *Christina Aguilera*, *Britney Spears*, and *Jessica Simpson* (to name a few) have become millionaires at the cost

of American culture. Four-year-olds know all of the lyrics to *Bye, Bye, Bye*. Nine-year-old girls packed into their mother's mini-vans in August to that beloved trip to the Columbia River Gorge at George to see Britney Spears. I can't believe that I'm about to share this with you, but when I was nine I'd seen three concerts: Tim Noah, Raffi, and the Tickle Toon Typhoon. It all makes my head spin! What is this country coming to?

Two weeks ago I was at Bumbershoot, sitting on the rim of the International Fountain at the Seattle Center, enjoying the final summer sun and the young Bohemians grooving with the drummers when it hit me between the eyes. Americans have the privilege of enjoying quality music from around the world. We all sort of know Celtic music sounds

(please don't think of *Riverdance*). We've all heard, at one time or another, some African music. We're all familiar with the Latin explosion. But here's the flip side. The young people in Ireland, Africa, and Latin America know boy bands to representative of American music. It's frustrating, isn't it?

I had a great adventure in Cuba this past January. Though Cuba is only 90 some miles away from the United States, it is an island cut off from, though not disenchanting with, American culture. The first night a group of us went walking through Havana and were invited to a bar by a local woman. As I recall, we heard three Cuban songs before the joint erupted in the familiar lyrics: "I want it that way." "Les gustan a los Backstreet Boys?" the spandex-clad woman asked. "Do you like Backstreet Boys?" We all smiled and nodded, not really wanting to explain how we really felt, and not wanting to let her down.

So why has this happened? Why have these half-assed musicians become both millionaires and international superstars when their

music isn't original and isn't really good? Is it a matter of convenience? Do teenagers take the newest pop videos as adults take the weather forecasts?

Or perhaps we can flip it around once more. Should the current music market be valued as a huge chunk of evidence that good old American entrepreneurship is still going strong? Is it true that somewhere, in some office, a team of people put their brains together, and made a plan to squeeze dollars from the poorest age group out there? And what can be done about it?

If you ask me — and I know you didn't, but I am saying as young Americans we have a responsibility. We must read books instead of watching reruns titled *The Best of SoCal Summer*. We must promote talented and independent musicians to our international acquaintances. We must flip the radio station when we hear annoying music. Because, in a way, the survival of our musical culture depends on it.

Kara Larson is a senior writing major who is more or less jealous of all the pop stars mentioned.

Broadband Buzz: Is Napster Going Down?

Column: A look inside at the digital music controversy

BY MATT CAMERON

Mast reporter

The Recording Industry Association of America, Metallica, Dr. Dre, et al have continued their respective litigious jihads against everyone's favorite file-sharing service throughout the past months.

Although access to Napster has been blocked on hundreds of college campuses around the country, including this one, it still enjoys a significant user base among impoverished music lovers all over the world.

Much like you and me, these people are far too polite or cowardly to shoplift and must resort to stealing music online.

Due to the precedent-setting nature of these cases, the high points of these suits have been far more notable than those of the average intellectual-property dispute.

One of the most amusing and embarrassing of these came in June when a court-ordered list of Napster

use among the top Napster executives revealed that not only had they been actively downloading illegal MP3s along with the rest of us, but that they exercised alarmingly bad taste in doing so.

One would expect the heads of a revolutionary new software company taking on the entire record industry to be kickin' out some Rage Against the Machine (*Take the Power Back*, anyone?) or at least preparing for the inevitable with Bobby Fuller's classic *I Fought the Law*. But no.

As much as interim CEO Eileen Richardson would have had us to believe that Napster was all about new acts and "not about Madonna," five MP3s of Material Girl hits were found on her hard drive.

Worse yet, cheese like Bette Midler's *The Rose*, best-forgotten Beatles tunes including *Hey Jude* among others, Cat Stevens, and Olivia Newton-John were all listed as office favorites — all copyrighted, all aesthetically questionable.

This proves without a doubt that

Napster's empire is not only run by hypocrites: it is run by aging hypocrites.

A dramatic moment came and went for a few long days near the end of July. It looked like the end for the upstart company founded by 19-year-old Shawn Fanning and his uncle as U.S. District Court Judge Marilyn Hall Patel seemed determine to take the file-sharing service offline, referring to it repeatedly as a "monster."

She finally issued a preliminary injunction against the company, an ultimatum ordering that the servers must be shut down by midnight of July 27 and remain shut down until the RIAA suit had resolved.

Meanwhile, the company attempted to organize a "boycott" among loyal users; a chance to demonstrate that fans of free music will still pay for the work of Napster-friendly artists like Ben Folds Five, DJ Spooky, Public Enemy, and Limp Bizkit when given a little encouragement.

It failed miserably (what did you

expect?) even while Napster registered its busiest day ever on July 27 as fans frantically grabbed what they could before the deadline.

An emergency injunction stayed the judge's order, arguing quite rightly that shutting down Napster's service indefinitely would force the profitless-yet-worth-\$100-million company into abject bankruptcy.

The jury is still literally out on Napster's future. If any one of the pending lawsuits succeeds against the company, it will almost certainly be doomed.

Shawn Fanning is enjoying the perks of his newfound fame while he's got it, however. His most recent public appearance was at the MTV Music Awards, where he came out on stage in a Metallica T-shirt to introduce charmless slattern Britney Spears.

"I'm just borrowing it..." he deadpanned. Kind of like the time his company is living on.

—Next week: Why Napster doesn't matter anymore...

Enjoy movies, music, theatre, and the arts?

Then you need to write arts & entertainment for the Mast!

E-mail riscbeer@plu.edu for more information.

New role-playing game released today

BY BRANDON WHIPPLE

Mast reporter

This one is for all of you who play computer games.

The most-anticipated (and probably the best) computer role-playing game to date is on its way to stores, even as you read this article. The game, *Baldur's Gate II: Shadows of Amn*, is the sequel to the smash hit *Baldur's Gate*.

The original game was awesome, and the sequel looks like it is going to be a hundred times better.

The graphics have been improved from a nice 640x480 resolution to an awesome 800x600 resolution. This leads to larger monsters, more realistic settings and scenery, and a more majestic visual all-around experience.

This improvement alone makes the game that much better. The improvements don't stop there, though. Oh no, there are plenty more where that came from.

In the original game you could create your character from one of eight different classes, ranging from a simple fighter or thief, to a druid or wizard. That seemed like a decent selection at the time. Not anymore.

The new game has the original eight classes, as well three new classes: The barbarian, the monk and the sorcerer.

On top of that, all eight of the original classes have three sub-classes you can choose from to further customize your character.

These sub-classes range from things like the assassin, to the sub-class of jester. The sub-classes all have their own abilities and bonuses, and are really character classes in their own right.

When all that is considered, *Baldur's Gate II* has an unbelievable 35 different classes to choose from.

Another great feature that has been added to this version is that the magic using characters now have the ability to summon familiars.

A familiar is an intelligent creature that is in the service of a wizard or sorcerer.

There are about nine different familiars in the game, ranging from an Imp to a bunny rabbit. Which one your character gets is dependent on whether they are good or evil. If your character were evil, you would get the Imp.

From what I have seen, the Imps in this game are completely disrespectful and will talk smack to your character non-stop.

Luckily, you have the option to toss your familiar into your back pack.

As far as races go, the developers have kept all the same races that were available in the first game. Those are: human, half-elf, elf, dwarf, gnome, and halfling.

In addition to the originals, the game has a new character race in the Half-Orc.

You also have the option of choosing the color of your character's hair, skin, and clothes.

The bottom line is that you have a ton of options when creating your character, which results in very unique game play.

The story line is much better than that of the first game, which speaks highly to its quality considering how great the original was.

On top of all that, you get a whole bunch of new weapons, magic spells, and characters to interact with.

The information I have provided you with here is just the tip of the iceberg.

The game is going to be huge, somewhere around 200-300 hours of game play.

It's almost a sure thing that this role playing game will become an instant classic.

The game is set to be released today, so go down to the mall and pick up a copy.

For more info on *Baldur's Gate II: Shadows of Amn* or role playing games in general, go to <http://www.interplay.com>

WELLS FARGO

SKIP the LECTURE We make BANKING easy

Here's a subject you can ace. Banking at Wells Fargo is a walk in the quad with the *Student Combo* Package. It combines a range of services into one smart plan. Sign up today at the Wells Fargo location nearest your school and you'll rock with a free Sony Music Gift Certificate.

The Student Combo Package

- Student ATM Checking
- Free Student MasterCard®*
- ATM & Check Card
- Online Account Access and much more

Plus log onto wellsfargo.com/special/sweepstakes and enter the Wells Fargo *Student Combo* Sweepstakes for a chance to win a Palm m100 handheld computer.



* No annual fee when linked as overdraft protection to your Wells Fargo checking account. Credit card issued by Wells Fargo Bank Nevada, N.A. and is subject to qualification. © 2000 Wells Fargo Banks. Members FDIC. All Rights Reserved. Palm is a trademark of Palm, Inc., or its subsidiaries.

Phone policy eases campus operator overload

BY ANNE KALUNIAN
Mast reporter

When on-campus students call the campus operator this year, they probably won't get connected to the party they want. Instead, operators will give out phone numbers to callers.

Walt Huston, director of Campus Safety and Information, said operators will do this in an effort to get students to write down and remember phone numbers rather than repeatedly calling to be connected to the same

person.

Campus Safety came up with the procedure to help ease the sheer number of phone calls the campus operator receives.

Last spring, the campus operator was receiving so many calls per shift that the phone lines would jam.

Huston said students would call the operator and ask for an extension of another student who lived down the hall.

"The student directory is published so that students do not have to call the campus operator and ask for another student's extension," Huston

said.

Huston explained that when a student calls from an on-campus phone such as from his or her residence hall, a special code appears on the operator's phone console.

Under the new policy, when a person calls from off-campus, that code does not appear, and the operator will not give out the student's extension. Instead, the caller will be transferred.

Students who do not want their extensions to be given out can go to the Student Life office and fill out a privacy

form, which will prevent their numbers from being published in the directory or being given out by the operator.

Instead, callers trying to contact students who have filled out forms will be transferred to the student's extension.

Laura Majovski, vice president and dean of Student Life, said that the procedure is meant to encourage students to write down extensions and to use the student directory.

Students have until Sept. 22 at 5 p.m. to go to the Student Life office and fill out a privacy form.

The previous policy, which did not allow operators to provide student phone numbers to any caller, was enacted partially due to a rash of prank phone calls, varying from hang-ups to sexually harassing calls.

Huston said, however, that Campus Safety is not worried about the number of prank calls increasing.

"All of the operators have been trained about this new procedure and know that they are not allowed to give out an extension unless the on-campus code appears on their phone console," Huston said.

Involvement Fair blends old, new

BY REBECCA WELLS
Mast reporter

The PLU involvement fair gave new and returning students the chance to discover new interests on campus, as well as to meet new people.

The event gave about 590 new freshmen students and 325 transfer students an opportunity to mingle among the many booths arranged in Foss Field after convocation Monday morning, said Rick Eastman, the associate director of Student Involvement and Leadership.

Many students admitted to signing up for too many programs but said they enjoyed meeting new people and finding out about new opportunities on campus.

"It's so cool! You can meet so many people and find new things," international student Kaled Al-Zaabi commented.

Jeff Jordan, associate dean for

Campus Life, said as he manned a booth, "The involvement fair is a great way to give students a glimpse of what PLU is all about, to broaden our horizons."

Jordan added that he met one student at the fair who had transferred from other colleges several times before coming to PLU but had never encountered an event like this one.

The involvement fair impressed the transfer student because it gave him the chance to see what PLU had to offer beyond academics, Jordan said.

Booths scheduled for the fair included 68 student groups, 39 community organizations, and 14 student office groups, Eastman said.

New groups included the PLU Film Society, the Philosophy Club, the Jui-jitsu Club and even Sun-chase, an organization for those interested in solar energy, Eastman

said.

He mentioned that Sun-chase is working on plans to build a solar-powered car.

Chaos, the math club that Eastman said has been around for the past three or four years, was also represented. They made a comeback, due to recent national success and recognition, Eastman added.

New clubs were not the only changes this year. Food Services provided the usual campus lunch in reusable nylon lunch bags sporting the PLU emblem instead of paper or plastic trays.

"The little black nifty lunch sacks are really great! They're a lot better than those flimsy styrofoam things we ate off last year," junior Gloria VanEaton said.

According to Food Services staff, the bags did not cost much more than the disposable dish wear from past years, and are more environmentally friendly.



Photo by Nisha Ajmani
Outdoor Recreation members Adam Sundstrom and Nick Sontag pitch the club's upcoming events to Julie Summerer at last week's Involvement Fair.



pour some
[gasoline]
on that fire in your belly.

You can feel it in your gut. A burning desire to push yourself to the limit, then go beyond. With Army ROTC, you'll get a chance to fuel that desire. In the process, you'll learn skills you'll be using for the rest of your life, like thinking on your feet, staying focused under pressure, taking charge. Register for an Army ROTC course today. It's time to stoke that fire.

ARMY ROTC Unlike any other college course you can take.

Scholarships up to \$16,000 are available! Call 535-8740 for information.



Lute Football defeats Cal Lutheran 49-7

BY ANDREW BENTZ
Mast sport editor

The Pacific Lutheran football team started the 2000 season right where it left off at the end of the 1999 season.

With a win.

The Lutes successfully defended their 1999 NCAA Division III national football title with a 49-7 win over the California Lutheran Kingsmen at Sparks Stadium in the 4th annual Lutheran Brotherhood Kickoff Classic.

It was the sixth straight win for the Lutes over the Kingsmen.

The PLU defense penetrated the end zone first. Cal Lutheran was driving deep into the Lute zone when junior linebacker Jasen Bennie hit Kingsmen quarterback Chris Czernek from behind and knocked the ball loose. It was scooped up by junior defensive end Kris Helphinstine, who scrambled 79 yards to score the first touchdown for the Lutes.

By the end of the first quarter, PLU led 21-0 on two long scoring drives.

The Lutes drove 94 yards on 10 plays and scored on a 24-yard pass from senior quarterback Chad Johnson to senior running back Shipley Ennis. The next drive was 64 yards and the Lutes scored on a 1-yard run by Johnson.

The touchdown pass from Johnson marked the 14th straight game in which Johnson has thrown a touchdown pass, setting a new PLU record.

In the second quarter, the Lutes scored on a 3-yard run by sophomore fullback Ian Hanly and a 30-yard run by redshirt



Photo by Leah Sprain

Freshman runningback Aaron Binger (22) runs over the Cal Lutheran defense with runningback Ian Hanly attempting to make a block.

freshman Aaron Binger. Hanly's touchdown was his only carry of the game.

The Lute offense generated 302 yards and 35 points in the first half to the Kingsmen's 140 yards of total offense.

Cal Lutheran was the first team to score in the second half on a 1-yard run by Czernek.

This score came after an 11-play, 74-yard drive for the Kingsmen.

Less than two minutes later, Ennis scored on a 9-yard run after a six-play, 81-yard drive for the Lutes.

Binger scored the final touchdown of the game on a 55-yard run. Binger ended the game with 171 yards, rushing

on eight carries and two touchdowns. He also caught five passes for 50 yards.

Johnson completed 66.7 percent of his passes (20-of-30) for 291 yards and two touchdowns. Johnson also gained 36 yards on the ground with seven carries and scored one touchdown.

Cal Lutheran generated 363

yards of total offense, including 306 yards passing by Czernek and completing 32-of-41 passes (78 percent).

The Lutes return to the field tomorrow hosting Simon Fraser in a 1:30 p.m. non-conference game at Sparks Stadium in Puyallup.

V-Ball starts season at 4-4

BY ANDREW BENTZ
Mast sports editor

The Pacific Lutheran Volleyball team gets set to enter its conference play with a non-conference record of 4-4.

■ **PLU 3, Seattle U. 0** - The Lutes defeated Seattle University in three straight sets Tuesday night, 15-3, 15-7, 15-5.

Sophomore Aimee Sloboden and freshman Erin McGinn led the team with seven each. Senior Mettie Burris notched nine digs for the Lutes.

■ **Western Washington 3, PLU 1** - The Lutes forced the NCAA Division II Western Washington to four sets but were defeated 18-6, 15-5, 11-15, 15-9 on September 8.

Junior Cara Smith led PLU with nine kills while teammate Sloboden was close behind with eight. Senior Suzanne Beauchene notched 20 digs for the Lutes.

■ **CSU Hayward 3, PLU 1** - The Lutes played Cal State Hayward in a non-conference match. The match was all tied up at one set apiece when CSU won the third and fourth sets to take the match, 15-10, 9-15, 15-8, 15-11.

Smith scored in double digits in both kills and digs with 14. Beauchene led the team with 22 digs.

■ **Whitworth Tournament** - The Lute Volleyball team played five matches in two days at the Whitworth Tournament on



Photo by Leah Sprain

Freshman Jenny Heu-Weller makes a back set in the Alumni match on with Suzanne Beauchene (left) and Holly Nottingham looking on.

Please see VB pg. 10



Instant Replay
Andrew Bentz

Welcome back PLU

I would like to welcome you all back to the Lutedome and to the first year students, welcome you to the world we call the Lutedome. I will be your sports columnist for the next semester, if not the whole year.

I spent my summer working at The News Tribune in the sports department, specifically on the agate and the baseball page. I also did some writing on golf and worked on the copy-editing desk.

Enough about me, lets talk about PLU athletics and how you can get involved right off the bat.

For all you freshmen or first year PLU students, I have a suggestion for you this weekend. Today, head out to watch the women's soccer team play UC Santa Cruz at 4:30 p.m. The women's soccer field is right behind the math building, so you won't be able to say that you didn't know where it was.

After the game you can grab some dinner at the gourmet UC and head down to Olson Auditorium to watch the 1999 Northwest Conference champion volleyball team take on George Fox in their first conference match of the season.

Seeing that this is the first

week of classes, after the volleyball game I'm sure most of you will attend an off campus "gathering."

After you wake up tomorrow morning, probably around 11 a.m., you can get another gourmet meal at the UC. But don't worry, after about a month your body will adjust to the food. Next, head down to Sparks stadium in Puyallup and watch the first half of PLU football.

At halftime you can sneak out and head back to campus to watch the second half of the men's soccer match against the Alumni.

Following the men's soccer match I'm sure that Saturday night will follow a similar pattern as Friday night.

If you follow this simple schedule you will be fully updated with PLU fall athletics, minus the cross-country team that will run in the New Balance Festival tomorrow. As long as you leave some time for homework on Sunday, you will have a well-balanced weekend.

I recommend between 11 p.m. and midnight, so you won't miss any NFL action or "The Practice," a few of my favorite Sunday TV programs.

Sports on Tap

Week of September 15-21

Football
Sept. 16 -- **SIMON FRASIER** 1:30 p.m.

Cross Country
Sept. 16 -- New Balance Fest. 10 a.m.

Women's Soccer
Sept. 15 -- **UC SANTA CRUZ** 4:30 p.m.
Sept. 16 -- **ALUMNI** Noon
Sept. 20 -- *Puget Sound 4 p.m.

Volleyball
Sept. 15 -- ***GEORGE FOX** 7 p.m.
Sept. 16 -- ***LINFIELD** 7 p.m.
Sept. 20 -- *Puget Sound 7 p.m.

Men's Soccer
Sept. 16 -- **ALUMNI** 2:30 p.m.
Sept. 20 -- *Puget Sound 5 p.m.

HOME GAMES IN BOLD CAPS
***Northwest Conference Matches**

Men's soccer lose three non-conference matches

By Andrew Bentz
Mast sports editor

The Pacific Lutheran men's soccer team dropped three of its four games so far this season while playing non-conference games in Hawaii.

■ **Hawaii Pacific 3, PLU 0** - Hawaii Pacific scored a goal in the first half and two unassisted goals in the second half to hand the Lutes their third straight

loss of the year.

■ **Brigham Young 2, PLU 1 (OT)** - Junior forward Patrick O'Neil scored in the second minute of the game, giving the Lutes the lead early in the game. The PLU defense held Brigham Young scoreless until the 88th minute when Glyn Drewery scored on a corner kick to tie the game and force it into overtime.

Five minutes into the over-

time period Brigham Young midfielder Beau Keenan scored the winning goal on a penalty kick when sophomore defender Scott McVicker was called for using his hands in the box.

■ **Hawaii Pacific 1, PLU (2OT)** - Both the PLU and Hawaii Pacific defense held each other scoreless for 118 minutes. Hawaii Pacific forward Darren Juliano scored the winning goal, hitting the net from

the right side of the penalty box.

■ **PLU 1, Brigham Young 0** - The Lutes won their first game of the season when senior midfielder Brian Kuklish booted a free kick to senior forward Cody Johnson, who headed the ball into the net in the 47th minute.

The game was quite physical, with four yellow cards being handed out. McVicker, senior Kit Shanholtzer, and sen-

ior Phillip Lund each received a card for the Lutes, while Todd Pitts received a card for Brigham Young.

■ **Next up** - The men's soccer team will play in the annual alumni match tomorrow at 2:30 p.m.

On Wednesday the Lutes will open their conference season against their cross-town rivals University of Puget Sound Loggers at Puget Sound.

Women's soccer defeats Evergreen

By Andrew Bentz
Mast sports editor

The Pacific Lutheran women's soccer team notched its first win with a 3-0 victory at The Evergreen State College in Olympia last Tuesday.

Sophomore midfielder Abby Buck put the Lutes on the scoreboard in the 13th minute. Buck received a cross from junior utility player Kira Johnson and put it in the back of the net, just past the Evergreen keeper.

When the first half ended PLU was ahead 1-0.

True freshman Maja Pedersen scored the Lutes second goal of the game in the 56th minute when she received a pass from senior midfielder Alison Brennan. Pedersen beat the Evergreen keeper in a one-on-one situation and put the ball in the far corner of the net.

Brennan then scored the third goal of the game when Johnson chipped the ball in front of Brennan, who faked out the keep-

er on a crossover step and put the ball past her.

The Lute defense held Evergreen to six shots on goal while the Lute offense generated 17.

■ **Southern Indiana 1, PLU 0** - The Lutes lost their second game of the year to Southern Indiana on a goal by Stephanie Minor that went in the upper-left corner of the goal.

The Southern Indiana defense held the Lutes to seven shot attempts in the game and shutout PLU.

■ **Hawaii Pacific 1, PLU 0 (OT)** - Both the Lute and the Hawaii Pacific defense held each other scoreless through regulation, but Hawaii Pacific's Amanda Rodrigues struck in the 95th minute. She put the ball in the left corner of the net from near the penalty line, handing the Lutes their first loss of the year.

■ **Next up** - The Lutes face UC Santa Cruz today at 4:30 p.m. and then play in their annual alumni match tomorrow at noon.

RETIREMENT INSURANCE MUTUAL FUNDS TRUST SERVICES TUITION FINANCING

Deferring taxes with TIAA-CREF can be so rewarding, you'll wonder why you didn't do it sooner.

Call us for a free tax-savings calculator

One of the fastest ways to build a retirement nest egg is through tax-deferred Supplemental Retirement Annuities (SRAs) from TIAA-CREF.

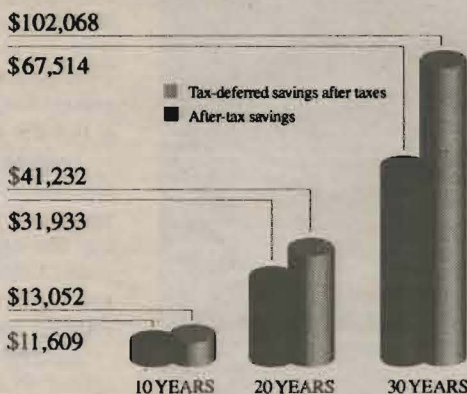
With funds automatically deducted from your paycheck, you can easily build income to supplement your pension and Social Security.

And your contributions to SRAs grow undiminished by taxes until you withdraw the funds.* Add to that TIAA-CREF's solid history of investment performance, bolstered by our commitment to keeping expenses low, and you have more money working for you.

So why wait? Let us help you build a comfortable retirement today with tax-deferred SRAs. We think you will find it rewarding in the years to come.

INVEST AS LITTLE AS \$25 a month through an automatic payroll plan¹

IT'S EASY TO SAVE MORE THROUGH THE POWER OF TAX DEFERRAL



In this hypothetical example, setting aside \$100 a month in a tax-deferred investment with an 8% return in a 28% tax bracket shows better growth than the same net amount put into a savings account. Total returns and principal value of investments will fluctuate, and yield may vary. The chart above is presented for illustrative purposes only and does not reflect actual performance, or predict future results, of any TIAA-CREF account, or reflect expenses.

*Note: Under federal tax law, withdrawals prior to age 59½ may be subject to restrictions, and to a 10% additional tax.



Ensuring the future for those who shape it.™

1.800.842.2776

www.tiaa-cref.org

For more complete information on our securities products, please call 1.800.842.2733, ext. 5509, to request prospectuses. Read them carefully before you invest. 1. You may be able to invest up to the IRS maximum of \$10,500 per year. To receive a personalized calculation of your maximum contribution, call TIAA-CREF at 1.800.842.2776. • TIAA-CREF Individual and Institutional Services, Inc. distributes the CREF and TIAA Real Estate variable annuities. • Teachers Personal Investors Services, Inc. distributes the Personal Annuities variable annuity component, mutual funds and tuition savings agreements. • TIAA and TIAA-CREF Life Insurance Co., New York, NY, issue insurance and annuities. • TIAA-CREF Trust Company, FSB provides trust services. • Investment products are not FDIC insured, may lose value and are not bank guaranteed. © 2000 TIAA-CREF 08/03

VB continued from page 9

September 1-2.

PLU lost its first match against Rocky Mountain College in four sets, 15-7, 13-15, 15-9, 15-5. Burris led the team in kills with 10 while Beauchene led the team with 11 digs.

After their first loss of the season, the Lutes defeated East Oregon in a five set match, 0-15, 15-13, 15-3, 12-15, 15-13. Burris and Beauchene each notched 12 kills for the Lutes, while Beauchene also had 21 digs.

In the third game of the tournament, the Lutes defeated Westminster in three straight sets, 15-4, 15-2, and 15-9.

Sophomore Kaitlin Glines led the Lutes with 11 kills and 12 digs.

After winning two straight

matches, the Lutes lost a non-conference match to conference foe Whitman in four sets, 15-9, 10-15, 15-6, 12-15.

Three Lutes reached double digits in kills with Beauchene with 14, Sloboden with 11 and McGinn with 10. Beauchene also notched 28 digs for PLU.

The last match of the tournament pitted the Lutes against the Pirates of Whitworth. PLU won the match in three sets, 15-6, 15-7, 15-8.

McGinn and Beauchene led the team in kills with seven each. Beauchene compiled 11 digs in the match.

■ **Next up** - The Lutes start their conference season tonight with a match against George Fox University in Olson Auditorium at 7 p.m. and then face the Wildcats of Linfield tomorrow night at 7 p.m.

PACIFIC LUTHERAN UNIVERSITY

Strong defense will anchor soccer team

BY ANDREW BENTZ
Mast sports editor

The Pacific Lutheran women's soccer team has a lot of work to do on their offense this season.

After finishing fifth in the Northwest Conference last season with a 6-8 mark, the Lutes are looking to work on producing more goals, especially late in the game. PLU lost four straight matches that went into overtime last season while winning only one.

The Lutes return with a strong defense, anchored by senior keeper Gloria Cefali. Cefali notched five shutouts last season with a 1.07 goals against average.

With 208 saves in two years as the starter in goal, she is on pace to set a Lute record. The record for saves was set by Lisa Cole (1993-96), who as a three-year starter recorded 276 saves.

The defensive line returns with junior Angela Carder, who started all 13 matches that she played in when not injured. Carder has a year and a half of solid experience, breaking into the starting lineup midway through her freshman year.

Playing sweeper will be sophomore Kelly Wright. Wright is a quick defender who doesn't let her 5-foot-two-inch height stop her from playing aggressively. Wright logged field experience last season starting 11 games at outside marking back.

Another player that could be used in the defense this season is junior Kira Johnson. Johnson is a utility player that has seen action as a striker, midfielder

and on defense in her career as a Lute.

Johnson scored two goals last season and could also be used to help PLU's offense.

Senior midfielder Alison Brennan, who earned all-conference honors last season, will be looked upon to control the flow of the game from her center midfielder position.

Despite missing seven matches last year due to an injury, Brennan led the team with four goals and four assists. After notching nine assists as a sophomore, Brennan is tied for ninth on the PLU career list with 17.

Sophomore Abby Buck will join Brennan in the midfield this season. Buck recorded a goal in four starts last season.

Outside of Brennan, the Lutes don't have a proven scorer. Offensively PLU only recorded 20 goals in 17 matches and players on this year's squad scored only 35 percent of those goals.

Other returning players include junior Brionne Shimoda and sophomore Laurie Allen. Both return at forward but neither scored a goal last season. Redshirt freshman Nicky Sharp and Toni Gatto could also see action in the offense.

New recruits to the Lutes include freshmen Nina Tangberg from Amot, Norway and Maja Pedersen from Fairbanks, Alaska.

With the loss of 65 percent of the Lute scorers, the Lutes will have to find a way to improve on their offense if they hope to improve on their fifth-place finish in the Northwest Conference last season.

No offense leads to a losing year

BY ANDREW BENTZ
Mast sports editor

Last season the Lute men's soccer team accomplished something it hasn't done in the 20-year history of the program.

But this is something the team wishes it could give back.

PLU recorded its second consecutive losing season (5-10-3). This year the team hopes to improve on that record with a solid group of returning players.

If you had to pin the blame for the seventh-place finish in the Northwest Conference on one aspect of the team it would have to be the offense.

The Lutes scored 17 goals in 18 matches last season and were shut out eight times. PLU was outshot 209 to 149 and allowed 93 opponent corner kicks to just 41 for the Lutes.

On the other side of the field, the PLU defense gave up only 21 goals all season. Senior keeper

Jonas Tanzer returns to the net for PLU after recording four shutouts with a 0.98 goals against average last season. For his performance he was named to the second team all-conference.

Along with a solid goalkeeper senior Shane Ness and junior Kit Shanholtzer both return as starters on defense. Ness also notched three goals last year and earned second team all-conference honors.

Other defenders that should see some playing time this season are sophomores Scott McVicker, Andreas Zeisig and Chad Ridgeway. McVicker picked up valuable field experience last year, starting in nine matches.

Three upperclassmen who played defense last season will now be anchoring the midfield. Juniors Rylan Cordova and Andy Yarborough will be moving from the defense to the midfield, which should allow them

more scoring opportunities. Cordova recorded two goals and two assists last season.

Senior Brian Kuklish, who started as an outside marking back for two years, will also make the transition from defense to the midfield.

Four offensive players are returning with experience to improve the Lutes struggling offense. Senior Cody Johnson notched three goals and three assists to lead the team in scoring last season.

Senior Phillip Lund, who had one goal in 12 starts, sophomore Anders Lindberg, who was scoreless in 10 matches, and junior Patrick O'Neill, who was slowed by various injuries last season, all need to step up this year.

PLU will be relying on this foursome and on true freshman Michael Rosenau to try break the now two-year streak of sub-.500 seasons.

Volleyball team ranked No. 1

BY ANDREW BENTZ
Mast Sports editor

The Pacific Lutheran Volleyball team won its first Northwest Conference championship last year and are ranked No. 1 by a preseason poll of the coaches in the conference this year.

With 13 players returning to the Lute squad there is plenty of optimism for this year.

"We've got a good returning nucleus of players with a lot of playing experience," PLU head coach Kevin Aoki said.

The main loss for the Lutes is two-time all-conference setter Ingrid Lindeblad, who graduated last May.

Key players returning to PLU are senior outside hitter Suzanne

Beauchene and sophomore right-side hitter Amiee Sloboden, who were both selected to the second team all-conference last year.

Beauchene led the 1999 team with 2.77 kills and 4.14 digs per game. Sloboden averaged 2.5 kills per game.

Senior Mettie Burris and junior Renee Beauchene are middle blockers that should give the Lutes a strong presence in the middle. R. Beauchene led the team with an average of 1.11 blocks per game. Burris averaged 2.45 digs and almost one block per game.

One player who could make an impact in the middle is true freshman Erin McGinn, who stands 6 feet tall and is one of the tallest Lutes this season.

Defensive specialists that returned for the Lutes are senior Jill Muhm and sophomore Cailyn Akers.

With the absence of Lindeblad, two players are set to step into the setter position. Junior Rose Sacco has been the backup setter for the last two years, but she missed a good deal of last season with shin splints.

True freshman Jenne Heu-Weller is being shaped into a full-time setter after playing several positions at Olympia High last year.

With a large group of returning players, who have gone through a championship season, Aoki said he feels that this could be his best team in his five years of coaching at PLU.

there's
a better
textbook
experience

Discounted Books

Fast Delivery

100% Secure Site

Play the
Break-Away
Sweepstakes!
Sponsored by American Express®
Snag your choice of a killer
vacation with a friend
to Europe, Cancun or
Park City, Utah.

 VarsityBooks.com

No Purchase Necessary. The Varsity Books Break-Away Sweepstakes begins on August 15, 2000 and ends on October 31, 2000. To enter by mail send your name, address, city, state and zip to: The Varsity Books Break-Away Sweepstakes, PO Box 612, Wynnewood, PA 19096-0612. Sweepstakes entries must be submitted by October 31, 2000 and received by October 10, 2000. One entry per envelope. For a complete set of rules, send a self-addressed stamped envelope to: VarsityBooks.com, PO Box 603, Wynnewood, PA 19096-0603. Void where prohibited.

XAVIER

continued from page 1



Photo by Eric Rutherford
Dave Wehmhoefer, director of Plant Services, points out what used to be faculty offices on the second floor of the Xavier building.

few weeks to decide whether to approve the contract.

"We think it would be a good idea to talk about the price with them — not that they could do a whole heck of a lot now that we've gutted the whole building," she said, but added that administrators have been talking with the Regents about the project for some time.

The project is being funded by gifts from alumni and other philanthropists.

David Aubrey, the vice president of Development, said the university has raised \$3.2 million for the construction.

In addition, PLU has set a goal of \$1.5 million for a "general endowment" to help pay for academic programs, new technologies and maintenance for the building.

So far, the university has brought in \$1 million, Aubrey said.

Wehmhoefer said the remodeled Xavier will be a mixture of historic architecture and new technologies.

The classrooms will have audio and visual systems built into the walls to reduce the number of carts carrying heavy electronic equipment to and from rooms. Huelsbeck called these fully wired rooms "smart classrooms."

It will also have a new elevator that will be large enough for people in wheelchairs to use, and a brick patio on the north side.

Most of the plants that were next to Xavier have either been removed or will be. Students may notice that the two large

cedars on the east side of the building have been cut down.

One bit of flora that will stay is a large purple rhododendron on the north side of the building, but it will get pruned down, Wehmhoefer said. He added that the rest of the shrubs will be dug up and moved to other parts of campus.

Melinda Johnson, a third-year student, said she's sad about crews cutting down trees, especially one that was on the south side of the building. The tree had a trunk that curved in a such a way that a person could sit and read in it.

"Because I didn't know why they cut them down, I didn't like it," she said. "But to the freshmen who are coming in, they won't tell the difference."

While this year's freshmen will just remember what they saw when they got here, students from earlier years will remember Xavier Hall's longer history. It is PLU's second-oldest remaining building.

Xavier was constructed in 1937 as the school's library, although it had a few offices and classrooms on the ground floor.

When the Mortvedt Library was completed in 1967, Xavier was renovated and became a building of all offices and classrooms.

"The library was a beautiful building and I think it will be again," Nordquist said. She remembered when she lived in Harstad Hall as a student, having the old library so close to the residence hall offered some advantages for the women living there.

QUEER

continued from page 1

Kraig said, however, that after speaking with President Loren Anderson Wednesday, she had hope for the situation.

Kraig said Anderson never tried to defend the decision process. Rather, she said, he admitted that in hindsight, there were mistakes made in the process.

Kraig said she was encouraged by Anderson's willingness to listen, take responsibility and start moving forward.

Despite questions regarding the decision process, however, the administration remains firm on the cancellation.

After speaking with President Anderson, Kraig said the process of undoing the cancellation would be more laborious than it is worth.

Instead, Harmony will begin this weekend drafting a proposal for a new conference for the spring — one that more accurately reflects the

group's initial plans and the university's capabilities.

"I wish the cancellation wouldn't have happened," Kraig said. "But now we have a place to start, and the knowledge to reduce the likelihood of the same problems occurring again."

The working title for the new conference, at this point, is "Building a Fair and Inclusive World for Sexual Minority People."

"We will be committed to a manageable size, something that fits the size of our facilities," Kraig said.

The real difference in this proposal will be the approach Harmony and Kraig take to planning. "This time around we want to be sure everybody has knowledge of what is going on," Kraig said.

The new conference would be an opportunity for information

exchange, education, and support, centered on issues of affirming sexual minorities.

In addition, she said, such a conference would offer a time of respite for many people who rarely have an opportunity to fully relax.

"If you're a marginalized person in this day and age, with homophobia one of the more acted upon forms of discrimination, you're rarely in a forum surrounded by allies," Kraig said.

"This kind of thing can be sort of a respite, a time to relax, not

"If you're a marginalized person in this day and age, with homophobia one of the more acted upon forms of discrimination, you're rarely in a forum surrounded by allies."

-- Beth Kraig
Harmony advisor

be on guard, not have to worry about the next hurtful question or comment."

Finally, Kraig said, a conference for sexual minorities and their allies would help identify PLU better as the kind of Lutheran school it is.

"It would identify PLU as a place of faith and knowledge, where prejudice is not accepted,

and where the marginalized can be accepted and affirmed," she said.

Though Majovski said she could not comment on a new conference until she saw the proposal, she echoed some of Kraig's thoughts on diversity.

She pointed out that two year-long university initiatives include sponsoring events that foster a campus climate of faith and knowledge and focusing on diversity and dialogue.

Majovski said she has asked Eva Fry, the new associate director of multicultural affairs, to work with Harmony and help engage the community in dialogue on sexual minority students.

Kraig will also continue meeting with members of the administration concerning lapses in communication and dialogue, as well as planning for the new conference.

* * * ATTENTION STUDENTS * * *

NON-DISCLOSURE OF "DIRECTORY INFORMATION"

The Family Educational Rights and Privacy Act of 1974, popularly known as the "Buckley Amendment" and carrying the acronym "FERPA," governs the University's collection, retention, and dissemination of information about students. The document appears on the Student Handbook and Policy Guide website for your review at www.plu.edu/~print/handbook/policy.shtml.

One category of information covered by FERPA is called "directory information." PLU's definition of "directory information" (information which we may make available to the public upon request) includes: student name, local and permanent addresses, telephone numbers, E-mail address, date and place of birth, participation in officially recognized activities and sports, weight and height of members of athletic teams, dates of attendance, class schedules, class rosters (without social security or other student ID number), class standing, previous educational agency or institution(s) attended, major and minor fields of study, anticipated date of graduation (if that has not yet occurred), honors (including Dean's List), degree(s) and award(s) conferred (including dates), full-time or part-time status, and photograph.

The University may disclose any of those items without prior written consent through the PLU Student Directory and/or in any other way unless an "eligible student" (18 years or over) or a parent (if the student is under 18 years of age) gives notice in writing to the contrary to the Office of the Vice President and Dean for Student Life. The student or parent must sign a form restricting the disclosure of the directory information, as it pertains to said student, by the last day of registration for any given academic term at this University.

If it is your wish that PLU NOT disclose "directory information" about you through the PLU Student Directory and all other avenues which are ordinarily used for those purposes, you must come to the **Student Life Office, Hauge Administration Building 105, to complete the appropriate form.** The form must be completed by 5pm, Friday, September 22nd. This restriction will remain in effect until the tenth day of the fall semester of the next academic year, unless you revoke it in writing.

Thank you for your attention on this most important matter.


Write for the Mast!

We still need writers for news, arts & entertainment, and sports.

Have a ton of fun, get paid, and gain lots of real world experience.

To learn more, call x 7494.

537-7700



PIZZA TIME.

Sun.-Thurs.: 11 a.m. - 12 a.m.
Fri. & Sat.: 11 a.m. - 1 a.m.

MEDIUM
1 topping - \$5.25 +tax
(No postcards please)

LARGE
1 topping - \$5.99 +tax

X-LARGE
3 toppings - \$9.99 +tax

PLU gged

in

Pacific Lutheran University

- INSIDE >>>>**
- Student Gov't.
 - Student Media
 - Student Services
 - Sept. Calendar



Loren Anderson

Welcome to Pacific Lutheran University!

We look forward to the 111th year in the life of PLU—to the promise it holds and to sharing the days of this new academic year with you. We hope the "move in" has gone well and that you are prepared for a year that will be challenging and rewarding.

During the weeks of summer, the PLU faculty and staff have been busy preparing for your arrival. Faculty have been working to enhance course content, student leaders have planned an exciting array of student activities, and numerous physical changes have altered the campus. South Hall is now complete, cable television has been installed across campus, the W.M. Keck Observatory is ready for use, and several improvements in the university commons are among the changes made to create a comfortable learning and living environment.

It is our hope that you will enjoy your year at PLU and I urge you to be an active member of the university community. Invest yourself fully in your academic program and seek out opportunities to be involved in both our local and global community. Take time to nurture your spirit.

To these ends, we commit to you a year of academic challenge in a university community that encourages you to take risks and offers you our full support. We hope your year will be a time of significant growth and learning.

GO LUTES!

Loren J. Anderson
President

For those of you new to Pacific Lutheran University, welcome to a university that provides first-class business services so that students can concentrate on their learning. For all students, let me introduce you to the components of the division of Admissions and Enrollment Services. Counselors in the Office of Admissions provided you with a wealth of information about PLU that assisted you in your decision to become a LUTE. The division also contains financial aid administration, student employment listings and job match, and the student services center.

The Office of Financial Aid and Student Employment administers \$42 million of federal, state, and PLU aid to undergraduate and graduate students. In addition to awarding individual financial aid packages, the office helps students connect with on-campus and State work study jobs. The administrators are kept busy with innumerable federally prescribed

Laura Polcyn



Welcome to Fall 2000 at PLU. The opportunities and possibilities ahead are exciting. We are here to help you learn well and live well.

Starting a new academic year is a lot like starting a new calendar year. Think of this as a "new year's eve". What resolutions or goals do you have for the year ahead? Here are a few ideas for *new year PLU resolutions*:

- **Challenge yourself in the classroom** – get to know your professors, ask questions, focus on time management and study skills, utilize resources on campus, study abroad, and embrace opportunities to stretch your mind.

financial aid rules, plus countless PLU policies. But they are here to make sure you receive the suitable financial aid package.

The Student Services Center is the place to go if you need registration assistance, a copy of your transcript, bill analysis, financial aid package review, or loan alternatives. We want you to become familiar with and use Banner Web for registration, financial aid, etc., but we know that sometimes you need to see a student services counselor. The center is open convenient hours. The traffic is heavy at the beginning of each semester and during registration times.

We want your experience at PLU to be as great as the day you decided that PLU would be the right place for you. Take advantage of the services provided by this division!

Laura J. Polcyn
Vice President for Admissions and Enrollment Services



Laura Majovski

- **Get Involved** – join a club, attend sporting events, volunteer, utilize student government, make new friends, explore opportunities for leadership, and become part of the PLU community.

- **Take care of yourself** – eat well, exercise, limit substance use, plan recreational activities, nurture healthy relationships, take time for yourself and learn to handle stress.

Be sure you know of and utilize all that PLU has to offer. Spend time browsing the Student Handbook and Policy Guide – It's your resource book. Happy New Year!

Laura F. Majovski
Vice President and Dean
for Student Life



Paul Menzel

Welcome to Our University, New Students! It's exciting that you're about to engage the academic life at PLU. As the university's provost (i.e., academic v.p., chief academic officer), I am responsible for seeing to it that the university has excellent courses, superb faculty, and challenging academic standards. If there's one plea that I want to make as you come to PLU, it's that you regard your academic life—the life of your mind that you will expand here—as more than the classroom itself. Engage your professors after and out of class, and come to campus events like the fall lecture series on Ethical Issues and Their Consequences. That series includes noted faculty from both PLU and around the country (you'll see all of those announced later). So welcome to the best years of your life, right around the corner!

To our returning students, an enthusiastic welcome back. Your study this year will be especially enriched by faculty returning from sabbatical leaves, bringing the world to the classroom. For all of you, this year will take you to the world around you, some with study abroad, some with internships and service learning, and virtually all of us with the click of a mouse to the world wide web. My best wishes for profound experiences.

Paul Menzel
Provost

STAYING CONNECTED

THE INTERNET AND MORE

Life at PLU can get to be very hectic and erratic. Whether you are a new student or returning for the second, third, fourth time, it is going to be a different year! A common theme of student conversation is "I didn't know that was happening!" or "Oh, that was last night, I really want to attend that concert/play/lecture/club activity." So, how do you stay informed? How do you find out what's happening on campus?

We have a few ideas that will help you be "in the know":

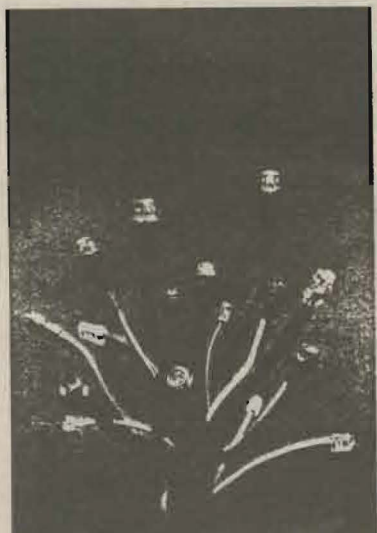
- **Subscribe to the list serve "CAMPUS Voice"**. You can do this by visiting the PLU Website and following the instructions in

Online Services. There will be weekly distribution and daily updates.

- **Daily Flyer**. This Monday through Friday publication is a great source of clubs and organization advertising, announcement of campus meetings, recruiting visits and important dates. It is available in the Commons, Coffee Shop, Commuter Lounges, residence halls, and academic buildings.
- **Campus bulletin boards** are maintained by ASPLU and should have current information/advertising in the form of posters and flyers.

- **The Mooring Mast** is published weekly and distributed on Friday. You can find a copy in the Administration Building, University Center, Residence hall desks and the lobby area of most academic buildings. The Mast staff covers campus news and the local scene.

THIS JUST IN!!! Computing and Telecommunications has installed e-mail kiosks. You can find them in the UC, Admin, Rieke and Library. Additionally, a total of 10 laptop stations are now available in the Library. Check at the Resource Desk for info and location



OPPORTUNITIES IN ASPLU

ASPLU SENATE: Have a positive impact on your peers by passing legislation that matters, voice the student opinion through campus committees with faculty and staff, and see what you are really capable of being as a senator. Positions are still open and elections will be soon, so keep your eyes and ears open. Contact Becky Mathews, ASPLU Personnel and Public Relations Director, at x8767 for more information.

PROGRAMS COMMITTEES: Contact Tim Vialpando, Programs Director, at x7482 for more information.

ENTERTAINMENT: From the small local bands to the big name acts across the country help plan PLU's most entertaining events.

LECTURE & FILM: Bring the experts in a variety of fields to the PLU campus for the purpose of educational lectures and discussions.

FORMAL DANCE: Put on the most dazzling events of the year including the Homecoming and Spring Formal Dances. From the location to the theme, the night could be all yours.

SPECIAL EVENTS: Tired of the same old programs, well bring your fresh and innovative ideas to this committee and be ready for fun.

HOMECOMING: Take part in PLU's most important tradition during Homecoming 2000 and being your own legacy on campus.

OUTDOOR RECREATION

(OR): Along with all the events and opportunities that ASPLU provides on campus, OR takes Lutes to the next step, the outdoors. With trips planned for most weekends and extended trips during breaks, you will never stop being amazed by the opportunities that Andy Friedlander, OR Director, and his guides provide. To find out how to become involved, stop by the ASPLU office or contact the OR office at x5087.



Greetings from the office of the ASPLU Vice President. I hope that all of you have had a rejuvenating and exciting summer, coming back to PLU ready for a fresh start.

Whether a new freshman, transfer student, or returning veteran you are guaranteed to experience a revolutionized student government, ready to fulfill its duties of service and guidance. ASPLU will promote the broad range of issues in diversity, support faiths, provide excitement and entertainment through programs, foster a helpful connection to campus (no matter where you reside), and an opportunity for work, service, and a sense of community for all PLU students.

During the course of these first few weeks I encourage all of you to look at your commitments to this institution, the positive attributes you possess, and the talents with which you have been blessed. With them, take the risks that will have a positive impact on yourself and your peers. Finally, I encourage you to take on my challenge to you, and venture into the ASPLU office. Take this one simple risk and through it you will find a diverse array of opportunities waiting for you around the corner.

It is with much excitement and hope for the year ahead that I welcome you to the 2000 - 2001 academic year and most of all to **ASPLU 2000**.

Keith A. Pranghofer
ASPLU Vice President
253/535-7485
pranghka@plu.edu

OFF-CAMPUS STUDENT

RELATIONS: For all of you that do not reside on campus, don't fear losing contact. Brian Ellis, Director of Off-Campus Student Relations, and the ASPLU Senate Off-Campus Caucus are here to rescue you. As advocates for the off-campus students, they are constantly working on relevant issues, lobbying administrators, and much more. Contact Brian at x7481 for more information

THE CAVE & GAMES ROOM:

Need to make some extra cash to cover your weekend fun or maybe that student loan? How about working for ASPLU's Auxiliaries, where you will have the opportunity to meet and enjoy the company of your fellow Lutes

Looking for a late night snack, maybe some nachos or how about a Dryer's milkshake? Contact Megan White the director of the CAVE, ASPLU's student run eatery located in the ground floor of the UC, at x7456 for more information. Come on down to the underground. Operating Hours: Sunday-Thursday 7-12 and Friday & Saturday 7-1.

Stop by the Games Room, just across from the ASPLU office, and enjoy a variety of entertainment from video games, to pool, to movie rentals. Tierney Hernandez, Games Room Director, and her staff are there to help you out or call x7498. Operating Hours: Monday-Sunday 11-11.

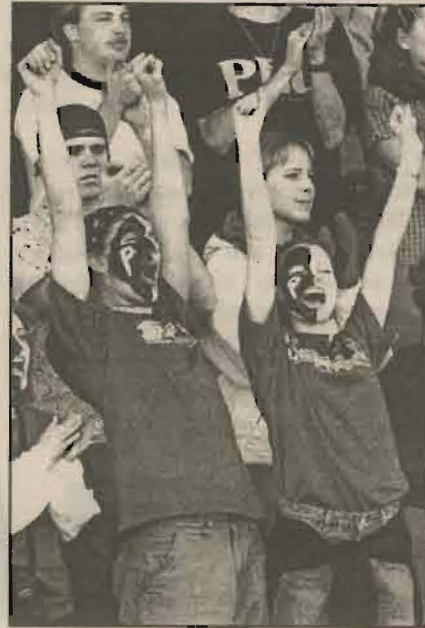
CHRISTIAN RELATIONS:

Serving the root of Christianity in PLU's history through missions, events, and outreach ministry are just a few of the things that you can find Jonathan Clark, Director of Christian Relations, tackling in the ASPLU office. Come and build a strong communication between your fellow peers through Jesus Christ and begin your life of service to God. For more information call x7486 and ask for Jon.

IMPACT: Have a huge IMPACT with your next class report, advertising for that upcoming event, or your personal webpage. Impact, ASPLU's creative advertising auxiliary, offers color copying, advertising design and distribution, webpage design, and much more. Get in touch with Parkland's finest and most reasonable graphic design organization by contacting Zac Thorpe, Impact Director or Ryan Davidson, Impact Production Director at x7479.

DIVERSITY & HUMAN

RELATIONS: Learn about cultures thousands of miles away, plan events that capture the issues at PLU, educate yourself and others about the greatness found in diversity. ASPLU believes that acceptance and tolerance to all people is essential to a positive community on our campus. Come and help promote this mission by contacting LeAnne Jones, Director of Diversity & Human Relations, at x7481.



STUDENT MEDIA

SAGA

The Saga is the university yearbook, a chronicle of the faces, places, and events of the year. It is the only book that can capture what PLU is like in 2000-01 - from academics to sports, dances to drama, homecoming to commencement, hall life to student government, its all there.

Opportunities to be involved with the creation of the yearbook are varied. You could be a part of photography, copywriting, layout, or sales. Call us at 7488 for information! Buying the yearbook will save memories. Joining the staff will create them.

THE MOORING MAST

The Mooring Mast, awarded best paper in the region last year, encompasses many majors and many levels of experience in our staff. We always need writers, and some of us are journalism majors, but regardless of your academic major, we need you.

To make our newspaper work we need people to take pictures, write, create graphics, edit, watch movies, eat at restaurants, draw, have opinions, sell ads ... the list goes on and on! Non-majors can write and journalism majors can sell ads--it all works. Sign up to participate in whatever capacity interests you! Our newspaper is compiled each week with enthusiasm, dedication, and professionalism.

For experience that will increase your confidence, add a little weekend cash to the pocket and shine on the resume', give us a call at x7494 or come visit us up on the UC mezzanine. We welcome your help and your opinions. Also, check out our web site, Mast Online, <http://www.plu.edu/~mast/>

K103 fm

K103 is the student-run radio station at PLU. It is found easily on channel 2 of the campus cable system or by a simple cable connection to a radio receiver tuned into 103.1 FM. Call x8860 for more connection information. New this year is webcasting, making our station available 24 hours, 7 days a week at <http://www.plu.edu/~kccr/>

We urge any student interested in the possibilities of radio or in merely seeing what they sound like on the radio to sign up for a show by calling x8860 or e-mailing kccr@plu.edu.

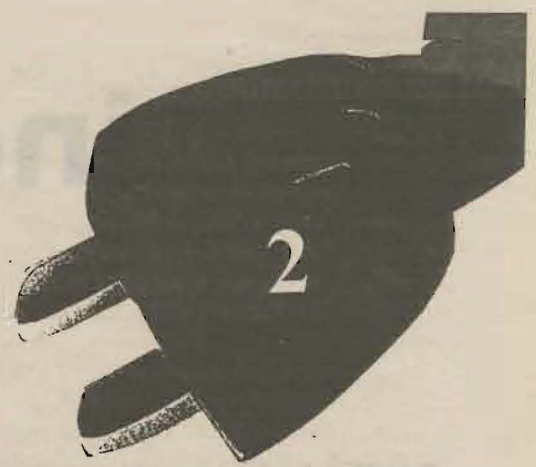
MATRIX

The Matrix is a student-published social justice journal that prints two issues a semester. Each issue has a focus related to topics of social justice. Some previous issues have focused on Literacy, Economics, HIV/AIDS, Prisons & Justice and The Environment

Any student interested in being involved with the production of The Matrix is highly encouraged to participate in any of a number of different ways. We need writers, layout and copy editors and people interested in working with subscriptions and distribution. Students from every major are encouraged to join our staff and write articles that are pertinent to topics that interest them as well as topics from their chosen field of study. Contact us at matrix@plu.edu

KCNS26

KCNS26 is the student-run television station at PLU. Students have the chance to work with various aspects of broadcasting, from planning programs to working behind the camera. KCNS26 is one of the few student-run



Hello to everyone and welcome back to a new school year. Whether you traveled, slept, or worked all summer like myself, I hope you are excited to start classes and meet/reconnect with your fellow Lutes.

It is that time of the year and our lives are beginning to become hectic again. We, as students, are at PLU to educate ourselves and to receive degrees. Throughout your tenure at PLU, take the opportunity to get involved on campus and in ASPLU. Becoming involved does make ones life busier, but the rewards are countless.

ASPLU Executives, Senators, Directors, and volunteers are eager to get the year rolling. ASPLU's existence is based on student service and we work to give voice and action to students' opinions.

This Fall Semester, ASPLU will hold Senate meetings bi-weekly beginning Tuesday, September 19, 2000 at 8:30pm in the Regency Room of the University Center. You are welcome and encouraged to attend.

I invite you to come and visit with me. My door is always open to students. If you ever have any concerns or questions, feel free to stop by ASPLU and we will do our best to help you. Once again, I am excited for the new year and I welcome you all to PLU.

Jason S. Weber
ASPLU President
253-535-7484
weberjs@plu.edu

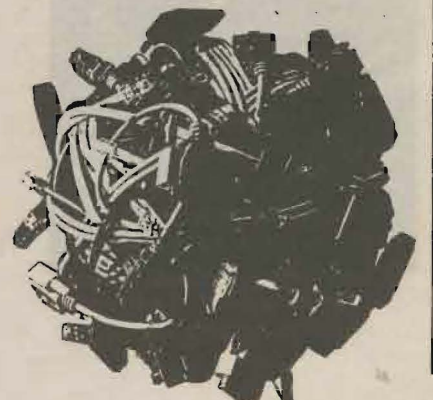
television stations in the state of Washington, providing a way for anyone to experience work in television, no matter their skill level.

KCNS26 provides a variety of programming, including everything from campus-focused newscasts to talk shows to televised sports events. Ideas for programs are always welcome, as are students that want to try their hand at television. If you'd like to work with KCNS26 whether as an anchor, a camera operator, or any other position, please call x8383.

SAXIFRAGE

Saxifrage is one of the vessels from which artistic energy pours forth at PLU. A literary magazine dedicated to celebrating the artistic nature within the PLU community, it annually publishes drawings, music, photography, prints, paintings, poetry, prose, and any other printable material created by PLU students, faculty, and alumni.

Staff are selected in the fall and meet weekly to design the magazine, choose the cover art, and organize the annual fall poetry reading. In the spring, the staff selects the works to be included in the publication. All students are welcome to join the staff and be part of this exciting and rewarding process. Contact us at saxifrage@plu.edu Last year Saxifrage (volume 26) was also published online. Visit our web site.



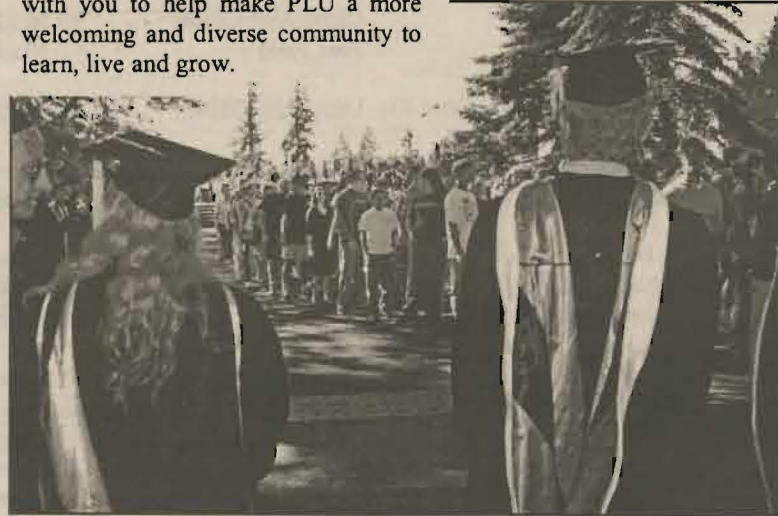
Multicultural Programming, Multi Ethnic Resources at a New Starting Point

Here at Pacific Lutheran University, we seek to develop members of society who will be actively involved with the development of our increasingly global community. We aim to engage the entire PLU community in discussion of multicultural awareness and understanding. PLU strives to foster a climate where all voices can be expressed and examined in critical discourse. The office of Student Involvement and Leadership houses the Multi-Ethnic Resource Center, Peer Advisors, and the Associate Director for Multicultural Affairs.

Here is place for people interested in issues of diversity and multiculturalism to meet, discuss and work. The PLU community has five Peer Advisors who work in conjunction with the Resource Center, ASPLU, PLU Clubs and Organizations, as well as other members of the PLU community, to connect diverse campus groups together. The Multi-Ethnic Resource Center strives to serve students. The Center supports the PLU goal of achieving and promoting diversity through coordination of services, programs, and activities.

In all of the restructuring of Student Life, there is also a new Associate Director of Multicultural Affairs. Eva Frey '95 has worked with issues of diversity while she was a student at PLU and most recently as a K-12 educator.

Stop by and see our changes! This is an exciting time at Pacific Lutheran University. We are preparing for an active and positive multicultural impact our campus. We, in the Multi-Ethnic Resource Center are working with you to help make PLU a more welcoming and diverse community to learn, live and grow.



TO YOUR GOOD HEALTH

Hello from the Health Center!! We're your "health care away from home" place while you're at PLU. We'll see you for illness, injuries or if you need a physical for sports or travel. We hold many same day appointments so if you call us in the Morning we'll likely be able to see you that same day for new problems. We provide confidential service - your privacy is totally protected.

We have a "walk in self-help center" so you can find some relief for your cold symptoms and we're available for advice in person or by phone at X7337. If you're planning to travel abroad, we provide travel counseling and most immunizations. It's in your best interest to see us early!!

Finally, we'd like to introduce our new health educator, Jon Smith. You can reach him at x7616. He's available to come to your hall or group for programs and will be out on campus with the Apple Cart handing out freebies for our monthly themes, so say "hi" when you see him.

CAMPUS MINISTRY INVITES YOU ON A SPIRITUAL ODYSSEY

The word "odyssey" is defined as a journey or a quest. At PLU, you are on a quest for truth. You are on a journey to see how the life of faith and the life of the mind stay in dialog with each other. You are on an odyssey to discover your God given gifts and talents and how God is calling you to use those gifts in service to the world

To assist you in this odyssey for the 2000-01 academic year, the Campus Ministry Office, Campus Ministry Council, and many student led religious clubs provide places of challenge, worship, community, service and dialog. The Campus Ministry brochure and website have more details.

This year chapel welcomes Dr. James Holloway, University Organist. Dr. Holloway has some dreams and visions about how music and the Chapel Choir can assist us on our Spiritual Odyssey. If you have interest in helping with Chapel, call the Campus Ministry Office. One couldn't experience a Spiritual Odyssey without some times of quiet reflection and meditation. Again this year, Holden evening prayer will be held on Tuesdays at 9:00p.m. in the Trinity Lutheran Church sanctuary. Candlelight and melodies of evening prayer allow us to put our quest in perspective. The University Congregation also assists students with the quest of relating faith to your education and daily life.



Worship is held each Sunday morning and Sunday evening.

Across the campus, student religious organizations are formed and in place to assist you in your odyssey. This year the Campus Ministry Council, along with the division of Student Life, will offer several opportunities to integrate faith with the burning issues of the day. PLU is a place that you can discover your faith, explore life's most difficult issues, actively apply your faith in service to community, and be refreshed in a community of faith. It will be a wonderful odyssey with you among us!

STUDENT SERVICES FEATURES EXPRESS COUNTER AND WINDOW

The Student Services Center provides innovative customer service to assist and educate students through the academic process with financial assistance and resources.

The Express Counter in the Center can help you with registration, dropping of classes, copies of class schedules, deferment forms, verification of enrollment for insurance purposes, official and unofficial transcripts, payment options, billing questions, and changes of address. If you need to drop off paperwork, get a copy of your class schedule or an unofficial transcript, we have an Express Window for quick service.

You must have the following documentation when using the Student Services Center:

- * Your Personal Identification Number
- * ID number

(If in person, PLU Identification Card)

HOURS OF OPERATION

Main Lobby

Monday through Friday
9 a.m.-12:30 p.m., 1:30 p.m. - 5:00 p.m.

Express Window

Monday through Thursday
8:00 a.m. - 6:00 p.m.

Friday

8: a.m. -5 p.m.

RAMSTAD HALL RESOURCES CAN GET YOU TO GRADUATION AND BEYOND

Counseling and Testing Services

<http://www.plu.edu/slif/ct/index.html>

Who are we and what do we do

- We offer individual and/or group therapy services for any registered student of PLU.

You can get help with personal problems (such as relationship difficulties, anxiety or depression), academic concerns and career decisions. Our office has 3 doctoral level psychologist/therapists who are available to meet with students in a confidential setting. Just call (7206) or stop by the center (located in Ramstad 106) to make an appointment.

- We coordinate accommodations for disabilities through this office. http://www.plu.edu/~slif/ct/dis_polity.htm
- We are a site for national testing CLEP, MCAT and the MAT are schedule.

- We offer outreach programming to classes and campus groups

We welcome requests, and try to fulfill as many as possible each semester. Contact our office for more information.

Academic Assistance Center

<http://www.plu.edu/aact>

ALL students can improve their learning and confidence, not to mention their grades, by taking advantage of the services offered by the Academic Assistance Center (AAC).

This year the tutors will be trained to offer more than the excellent subject-area tutoring that has traditionally been available. They will also be prepared to present special sessions in the more broadly useful areas of study techniques, time management, critical reading, test preparation, test taking, note taking, learning styles, and more. Take advantage; it's free if you are a registered undergraduate student

at PLU! Stop by our area in Ramstad 112.

Career Development

<http://www.plu.edu/slif/cd/index.html>

- Career Counseling
- Do you want to major in "y" and your family is nudging you to major in "x" because "it is practical and you can always fall back on it"? Or do you absolutely love your history classes, but aren't quite sure what happens to history majors once they graduate? A couple of sessions with a career counselor may be just the answer. With the assistance of the resources in the career library and the insights of an objective listener, you will begin to feel confident and directed - you'll have all (or at least many) of the answers.

- eRecruiting
- PLU now has our own, more manageable version of a "Monster.com" job site, [eRecruiting.com](http://www.plu.edu/~slif/cd/eRecruiting.com). Hundreds of Puget Sound employers list their internships

and full time professional openings with the purpose of attracting and hiring PLU students. Once you activate your account (call x7459), you can browse for jobs 24/7 in the comfort of your own room. You can also post your resume and schedule interviews with corporate recruiters. Experience.com, another arm of eRecruiting, profiles hundreds of interesting professions, industries and companies (e.g., Sports Illustrated, Walt Disney; holistic veterinarian, semi-professional athlete).

- Realistic Job Outlook
- So, don't fret or angst over career issues. The economy is strong, recruiters are knocking down the doors for qualified college graduates, and you are smart, beautiful and talented. Stop by Career Development --you deserve it!

Brick & mortar address: R111; electronic address: www.plu.edu, then follow the links.

SEPTEMBER

DATES TO REMEMBER

IMPORTANT READING

Pacific Lutheran University adheres to the federally mandated policy covered by the DRUG FREE SCHOOLS ACT. You can read this document by going to <http://www.plu.edu/~slif/drugfree.html> Be informed!



New Kid on The Block

South Hall is PLU's newest addition to student housing. The 100-unit, 230-bed complex combines students' desires for privacy and affiliation. This community, for students eligible to live off-campus, provides students with the opportunity to live in studios, two- and four-bedroom units, lofts and townhouses. Students may do their own cooking or take advantage of any university meal plan. Each unit is fully furnished and includes access to cable TV, the university phone system and university Ethernet. A public lounge and conference room enhances the building and allows for classes and small group interactions. Hall programs by staff and hall council will add to the living-learning environment.

FERPA

Did you know that you have the right to request that all of your personal information be withheld from any university publications (like directories). **You have until September 22 to make your request.** Contact the Student Life Office, X7191 for more information and procedures

The Beeping May Not Be Your Alarm!

The procedure for handling trash in the residence halls is changing in the fall of 2000-01! Instead of using trash chutes, each resident will be responsible for disposing of their trash in one of the dark green totes located outside of their residence hall. A local refuse disposal company will empty the totes Monday, Wednesday and Friday of each week. All trash chutes will be locked and no longer in use. The reasons for the change are many--the trash chutes are very old; there have been changes in the fire codes; the odors associated with trash in the residence halls will be eliminated; the liability associated with handling trash will be reduced; and there will be fewer vehicles on campus.

WORLD NEWS WWW.PLU.EDU/~INPR

The 2000-01 academic year will welcome back to campus 103 returning study abroad students and greet a record number of international students and visiting scholars. If you are interested in being part of the international crowd, mark your calendars for some international program events and also application program deadlines.

September 20, 2000 -- FLAG CEREMONY, Administration building foyer, 11:00 a.m. Celebrate the arrival of our new international students and visiting scholars. Refreshments will be served.

September 21, 2000 -- STUDY ABROAD FAIR, University Center, 11:00am - 3:00 pm

Meet all the program representatives from PLU sponsored semester/full year study abroad programs. Pick up program brochures, learn about the programs and their requirements and visit with PLU students who have participated on these programs.

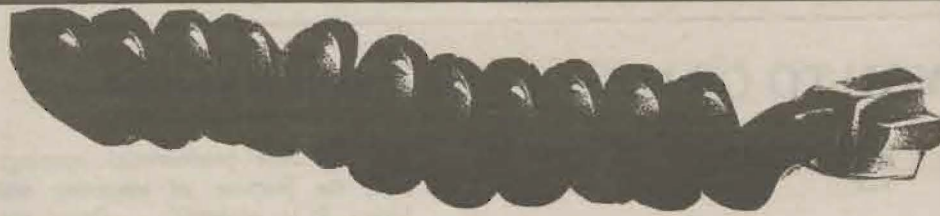
January Term 2001 - There are still openings in many of the J-term 2001 courses. Two of the January term courses fulfill the Freshman J-term requirement! Check our web site for course descriptions (www.plu.edu/~inpr) or stop by the Center for International Programs, Harstad Hall, Room 105 for details.

ATTENTION FRESHMAN!! What's new for spring semester 2001? **2 off-campus, spring break, Critical Conversation Courses!!** Applications for these courses will be available in our office on **October 2, 2000.**

International program advisors are available Monday through Friday to discuss your options for studying abroad.

8	Women's Volleyball (vs) Western WA	Olson Aud.	7:00 p.m.
9	Football (vs) Cal Lutheran Women's Volleyball (vs) Alumni Luterun 5000 Cross Country	Sparks Stadium Olson Aud. PLU Campus	1:30 p.m. 7:00 p.m.
11	University Convocation University Involvement Fair	Olson Auditorium Foss Field	10:30 a.m. 11:30 a.m.
12- Oct. 11	Patrick McCormick Exhibit of Ceramic Art	University Gallery	8:30 a.m daily
12	Women's Soccer at Evergreen State Women's Volleyball at Seattle U.	Olympia, WA Seattle	4:00 p.m. 7:00 p.m.
15	Women's Soccer (vs) UC Santa Cruz Women's Volleyball (vs) George Fox Movie Night on Foss Field(ASPLU)	PLU Olson Aud.	4:30 p.m. 7:00 p.m. 9:00 p.m.
16	Cross Country at New Balance Festival Women's Soccer (vs) Alumni Football (vs) Simon Fraser Men's Soccer (vs) Alumni Women's Volleyball (vs) Linfield PLU DAY AT THE WESTERN WASHINGTON FAIR --discount tickets and bus passes available at the UC	Clackamas, OR PLU Sparks Stadium PLU Olson Aud.	10:00a.m. 12:00 n. 1:30 p.m. 2:30 p.m. 7:00 p.m.
19	WASHINGTON STATE PRIMARY ELECTION--- polls open 7:00 a.m. - 8:00 p.m. ASPLU Senate Interest Session ASPLU Senate Meeting	ASPLU Office UC Regency	7:00 p.m. 8:30 p.m.
20	Women's Soccer at Puget Sound Men's Soccer at Puget Sound Women's Volleyball at Puget Sound	Tacoma Tacoma Tacoma	4:00 p.m. 5:00 p.m. 7:00 p.m.
21	Study Abroad Fair	UC	11:00 a.m.
22	10 TH DAY OF CLASSES----- LAST DAY TO SIGN UP FOR FERPA NON-DISCLOSURE Robin Sawyer Lecture	LAST DAY TO ADD CLASSES UC, Chris Knutzen Hall	8:00 p.m.
23	Women's Soccer at Linfield Football at Whitworth Men's Soccer at Linfield Women's Volleyball at Pacific U.	McMinnville, OR Spokane, WA McMinnville, OR Forest Grove, OR	12:00 n. 1:30 p.m. 2:30 p.m. 4:00 p.m.
24	Women's Soccer at Willamette Men's Soccer at Willamette	Salem, OR Salem, OR	12:00 n. 2:30 p.m.
28	"Dorothy, Harry, and Bilbo: Ethical Choices in Fantasy for Children" Lecture by Dr. Suzanne Rahn, English	Scan Center	7:30 p.m.
29	Cross Country at Nat. Course Preview Women's Volleyball at Whitman College Karaoke in the Cave	Spokane, WA Walla Walla, WA CAVE	10:00 a.m. 7:00 p.m. 8:30 p.m.
30	Women's Soccer (vs) Pacific U. Football (vs) Linfield Men's Soccer (vs) Pacific U. Women's Volleyball at Whitworth College	PLU Sparks Stadium PLU Spokane, WA	12:00 n. 1:30 p.m. 2:30 p.m. 3:00 p.m.

October 1-8 PLU HOMECOMING WEEK



GOT A CAR? NEED TO PARK IT?

This year parking at PLU is a whole new ballgame. Vehicle registration decals are available at Campus Safety and remain \$20.00 for the year. Be sure to bring your vehicle registration form from your glove compartment when you come to register your vehicle. At the time of registration be sure to pick up the new Parking Guide with all of the new rules and regulations. That's where you will find out where you can park now, and where you can't. **Remember, parking is tight.** If you park in the community be sure to park courteously and legally. Parking laws will be strictly enforced both on and off campus. The off campus parking laws are covered in the Parking Guide too.

NOVEMBER 7TH----IT'S ABOUT MORE THAN BUSH AND GORE

If you think this year's election is just for president, we would like to introduce you to a number of resources that can help you make a difference with your vote.

Washington voters will be asked to decide the adoption of 6 initiatives that impact wildlife, property taxes, transportation, charter schools, pay for educators, and funding of education--the details on candidates and initiatives are available on the Web at www.vote.wa.gov/ For the many students hailing from other States --- you have similar critical issues being

decided by voters in November. To best prepare yourself to be an informed voter, visit the state government home page for your state and follow the links to candidates and issues. A great resource to find current information and news is **NEWSPAPERS ONLINE**, found at <http://www.newspapers.com> This site is free and will open the door to more than 5000 publications from around the world. Request our absentee ballot by October 1 to insure your vote will count.

WANT TO REGISTER TO VOTE IN WASHINGTON STATE?---Its easy to accomplish and you are eligible to register here (the requirement is that you must reside in the state for 30 days prior to election day). The Student Involvement and Leadership Office will have Voter Registration forms available for you. Campus groups, including Advocates for Social Justice, College Republicans, college Democrats, and GREAN will be conducting voter registration drives throughout Sept. **YOU MUST BE REGISTERED BY OCTOBER 8, 2000** to be able to vote in the November 7 General Election.

