

Fitness facilities finding freshness pg. 12



Travel Tips and Experiences pg. 6-7



Review: Kendrick Lamar's "To Pimp a Butterfly" pg. 5



# THE MOORING MAST

PACIFIC LUTHERAN UNIVERSITY

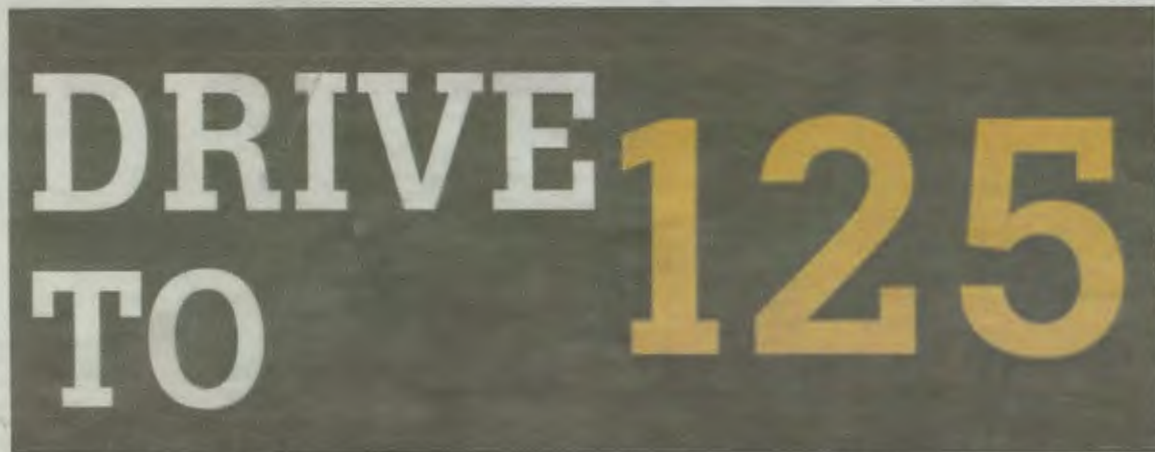
APRIL 3, 2015

<http://mastmedia.plu.edu>

VOLUME 91 ISSUE 16

## ATTAWAY ALERT

### Baseball completes Drive to 125



Pacific Lutheran University baseball took down across town rival University of Puget Sound to claim the Lutes' final win in the Drive to 125. The Lutes cut down the Loggers 6-1 Tuesday afternoon. To celebrate, PLU athletics will host a celebration in Red Square April 10 from 10:30 a.m. - 12:30 p.m. with free cupcakes. Even with the Drive finished, sports teams continue to compete. Look through pages 10-12 for more updates and a full game recap.



PHOTOS BY AUSTIN HILLIKER

### Quotable



"I didn't choose the play, the play chose me." - Sophomore Kiera Stevens "Canines view divine Friday" pg. 4



"No matter the profession someone is aspiring to be, we all have an opportunity to create our own masterpiece with this career choice." Senior Steve McGrain, "A different art, sports writing" pg. 12



"Simply put, just because a doctor says, 'It's a girl,' when someone is a baby doesn't mean they are a girl." Junior Angie Tinker, "Increase awareness on TDOB" pg. 8

## Meet your new ASPLU student leaders

### Fresh faces take the presidential election

**JEFF DUNN**  
Copy Editor

The new President and Vice President do not bring years of experience to Associated Students of Pacific Lutheran University, but instead bring a fresh vision and a desire to help.

Junior Martha Spieker and Sophomore Ellie Lapp have been elected the new ASPLU President and Vice President and are ready to hit the ground running.

Spieker is a double major in Political Science and Hispanic Studies. She spoke quickly and excitedly about traveling to Spain and Norway during the spring and fall semesters of 2014, respectively. Spieker is passionate about her new position, and she wants to hear people's stories and learn about their interests and concerns.

"I hadn't been directly involved with ASPLU before the election," she explained. "But we're really excited to be present at events, and we want



PHOTO COURTESY OF ELLIE LAPP

Spieker (RIGHT) and Lapp (LEFT) are mainly concerned with changing and broadening student government's role in every Lute's life. Mainly, they hope to make ASPLU transparent and accountable to students.

people to feel very comfortable approaching us."

Spieker is also involved with Club Keithley, which connects PLU students with the Parkland

community through service and outreach.

Spieker said PLU students should know that ASPLU is an advocacy organization. Their goal is for ASPLU's focus to be shifted away from programs and events. Not that they won't still plan and organize some events.

"We want to engage students. We want to create a space where students can have an open dialogue," Spieker said.

Lapp is double majoring in Anthropology and Global Studies with a minor in Hispanic Studies. She's very interested in international nonprofits and developments. Lapp was named a peace scholar for next year and was previously employed as a tour guide on campus.

"I know it's been a really important part of my life here at the university," Lapp said. She said that learning so much about the university and being able to share her love of PLU with prospective students was exciting.

Lapp and Spieker are

currently focused on connecting students to resources that can help them.

"People have already approached me and voiced their concerns," Lapp said. "People can approach me and talk to me about things they're passionate about."

Spieker and Lapp both like to work with diverse groups of people, and they both hope that working with ASPLU will give them perspective needed to succeed outside of PLU.

"At the end of the day, we're all human, and it's about helping each other," Spieker said. "What's a better way to do that than with a position like this?"

Spieker and Lapp were sworn into office on March 31 at the weekly Senate Meeting.

To learn more information about ASPLU or how you can get involved, visit <http://www.plu.edu/asplu/>



## Creating the new Lancelute

**NATALIE DEFORD**  
News Writer

There's a new face, or helmet, of Pacific Lutheran University. The new Lancelute mascot was created to match the goals of athletics and also the school as a whole.

"We wanted something that we could use not only at athletic events but could also be kind of a face of the university," said Sarah Hebel, the Marketing and Social Media Coordinator for PLU Athletics. "Something we could utilize at athletic events but also at other university events across campus."

The goal of the new mascot was to strengthen the PLU brand and make him a fan favorite that people would want to see around campus.

"We decided to get a new mascot because our old one was not very approachable or friendly," Hebel said. "We wanted to create something that would be more fan-friendly and would really engage the crowd or visitors on campus."

After unveiling the new mascot at one of the basketball games, Hebel said she's had nothing but positive responses. The mascot's presence has been requested for Admissions events and anything with the attendance of community members and prospective students.

"I think that it's been a good run so far of having something that the university can see and identify as kind of the face of PLU," Hebel said.

The older mascot had pieces of armor, was very dark and carried a shield. The new mascot has typical body armor, which features the PLU

logo on the chest, with a yellow cape and a giant helmet.

"It's nice because it's subtle but it also stands out in a crowd so you see it walking by and you know you want to give it a high five or say hi or take a picture," Hebel said.

With the costume comes a weapon prop – a sword – which Hebel said could be effectively used at games when points are scored or as a tool to charge up the crowd.

The shield of the previous mascot was less effective because it was awkward to carry around and the shield reminded people of being on defense rather than charging forward and scoring.

PLU Athletics approached Associated Students of Pacific Lutheran University for funding toward a new mascot last year. Then Athletics matched those funds in order to create the piece together.

Hebel said they then looked at other universities' knight mascots for inspiration, sketching together the pieces they wanted, and then ordered the mascot costume from Olympus Group.

Pictures of the costume can be found on the PLU Athletics Facebook, Twitter and Instagram. Hebel said she hopes there will be a whole webpage dedicated to the mascot after the upcoming re-design of the PLU Athletics website.

"The ultimate goal of the mascot is to be a symbol of PLU school spirit among our student body and our surrounding communities," Hebel said. "Lancelute's personality and liveliness represents Lute pride and brings that energy to life at events across campus."



## Wi-Fi on campus: What's the deal?

**GENNY BOOTS**  
News Writer

There is nothing as annoying to a millennial than a slow wireless network. Unfortunately at college campuses, thousands of young adults logging on with their computers, tablets, phones, printers and televisions puts a serious strain on networks.

At Pacific Lutheran University, the team that keeps it all running is the Information and Technology Services (ITS) Department. Tucked away in the Mortvedt Library under the "HELP" sign, this 25-person team is responsible for monitoring, updating and fixing any network problems.

The PLU network is split between two different connection points: one in the Mortvedt Library and the other in the Morken Center for Learning and Technology. ITS uses only two-wired routers on-campus, as opposed to the one home wireless router that many are used to. These routers go into every building on campus and create a network for that building.

"It creates a network for Tingelstad, and then that Tingelstad network has to exist everywhere," ITS Network Manager Greg Briggs said. "Because people would be pretty upset if their Internet connection only worked when they were in Tingelstad."

Access points throughout campus spread the network and allow for different devices to connect.

"It is what most people would think of as their home router. It's the thing that has the radios in it that lets your device communicate," Briggs said. "Your

home router will actually send some information to the devices in your home and some information out to the Internet and ours just put your wireless device on the same network as all of the other devices."

When there are too many people using a particular access point, it can slow down the system for everyone.

This spring semester there were many overlapping classes scheduled at the same time in Ramstad with more than one hundred people using the same access point. Briggs and his team rearranged the wires to put in another access point a few feet away and balanced the wireless across the building.

This type of maintenance work is vital to the health and reliability of the university's network. ITS

relies on the PLU community for reports of network problems.

"A lot of times we get calls, or a vague e-mail that comes and says 'there's a problem with the wireless' and that's the end of it. Unfortunately that just doesn't do us a lot of good," said Help Desk Specialist David Domask.

The Help Desk is available until 1 a.m. during the week and 10 p.m. on the weekends to answer these questions. They are also available nearly around the clock by email.

Usually what disrupts the network can be something as unassuming as a hair dryer. This is because of the two different broadband frequencies that wireless networks use. There is a 2.4 and 5.0 gigahertz spectrum that the network uses. Things like hair dryers, wireless printers

and televisions and low-budget computers use this lower frequency network.

"In the lower spectrum the 2.4 gigahertz spectrum everything generates interference," Domask said. "So someone pops on their hair dryer in the room next to you, suddenly there is an interference point between you and your access point."

To get the best Internet connection, it is important to make sure that you are using the 5.0 gigahertz frequency, where there is not so much activity or noise. Apple products such as iPhones and Macintosh laptops already have dual band capabilities and due to recent changes, should automatically switch onto the faster, 5.0 gigahertz frequency.

The best Wi-Fi on campus is in the dorm rooms, where there is a

guaranteed one-wired connection per bed. If it is possible to plug into the wired connection with an Ethernet cord, the Internet "is going to be the best. And we promise, the absolute best," Domask said.

However, the best and simplest solution to any network problems is to just call.

"Really reports are essential," Domask said.

By calling, e-mailing or physically speaking with a Help Desk staff member and answering a few quick questions, can help fix the problem much faster.

"Just knowing that there is a problem somewhere doesn't really help," Domask said. "We need to know where it is and there are a few tests we can run to help kind of get the scope of the problem."

"It's kind of like if you drop your car off at the mechanic and say 'it's had a problem for a while' and then you just leave," Biggs said.

The grumblings about slow Wi-Fi do not fall on deaf ears. The team at ITS works diligently, despite increasing network demands and falling budget allowance to deliver the best Internet services. But it takes the students, staff and faculty to report network problems to keep it running at full capacity.

"The more reports we get gives us a better idea of what's going on and a better idea of where to look for the problem," Domask said.

For any questions on what you can do to update your devices, get an Ethernet cord or how to get the best connection, contact the PLU Help Desk at 253-535-7525, helpdesk@plu.edu or at the Mortvedt library.

### Four ways to get better WiFi



Make sure to use a device with dual band capabilities and that you are using the 5.0 gigahertz frequency.



Go to a less populated building, especially when it's exam time.



Plug it in! Physically connect all devices, including printers and tv's to the wired network. For computers, this is done through Ethernet cables, which are available at the Help Desk.



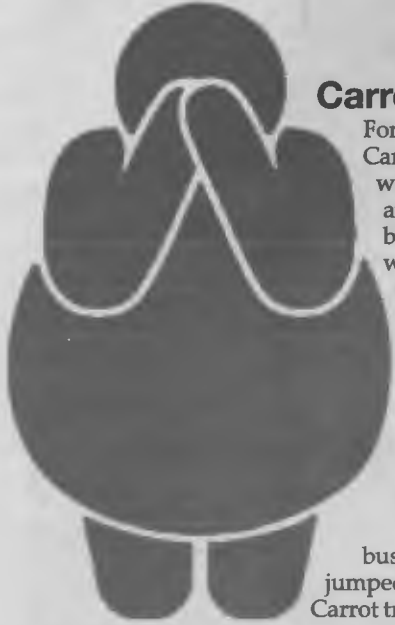
Call the Help Desk if you are experiencing a problem connecting or if you have any questions.



# The 'now' apps

Life hacks you didn't know you needed

**SAMANTHA LUND**  
News Editor



## Carrot

For iPhone users, Carrot is a to-do list with an attitude and can be your best friend or your worst enemy. Carrot can hold your hand through day-to-day tasks, workouts and recently has expanded to weather forecasts. Some businesses have jumped onboard the Carrot train, offering users

rewards for getting certain tasks and workouts done.

Carrot is pretty simple. You put in tasks or goals and if you achieve them within a reasonable amount of time (as deemed by Carrot) you get rewarded and Carrot will like you and treat you well. If not, the app shames you and will be in a bad mood.

Anything you need motivation with, Carrot can surely get you to do it. The worst part of the app is that it costs \$2 and is only for iPhones. If you are not one to throw yourself into an App and fully commit, Carrot probably isn't the right App for you.

## Update: Bottles aren't back

A letter from the editor

In the March 13 issue of *The Mooring Mast*, I reported a story, "Bottles are back" that questioned whether or not the Propel unflavored water bottles should be sold on campus.

Since that article was distributed, students have responded and shared their opinions. That is exactly what we want here at *The Mast*, to raise awareness and get people involved.

Once the article was published, the dining services reached out to us and to help them announce that the propel water bottles will no longer be sold on campus.

"On a daily basis we explain to our guests and students why PLU does not sell bottled water," said Retail Operations Manager for Dining and Culinary Services Tom Harvey. "The retail units more than any other organization support and defend Resolution 6 to the student body and guests."



**FREE**  
CHEMICAL TREATMENT WITH FULL COLOR SERVICE  
BROW WAX WITH FACIAL  
EXPIRATION 5.31.2015  
\*ALL SERVICES PERFORMED BY SUPERVISED STUDENTS\*

**Summit Salon ACADEMY**

3702 SOUTH FIFE STREET | APPOINTMENTS 253.617.7000  
TACOMA, WA 98409 | SUMMITSSALONACADEMY.EDU  
FORMERLY THE SALON PROFESSIONAL ACADEMY

## Last Message

One of the better life hacks of 2015, Last Message lets people know you aren't being rude... basically.

Last Message is a messaging app that will text your important contacts when your phone is about to die, explaining to them why you have not been responding.

You import and select people over text, email, Facebook and Twitter to receive the message and when your phone battery gets low, the app automatically sends it out right before your phone dies.

Worst part of the app? It is only for Android users.



## Waze

Waze is a community based traffic app. Other drivers in your area can post and share information about driving conditions, accidents and gas prices around you.

Waze alerts you as you approach a waiting cop or an accident that is stopping miles of traffic.

The Waze community can also edit streets to show construction changes to roads and closed down streets.

Waze won the Best Overall Mobile App award at the 2013 Mobile World Congress and is continuing to be upgraded and improved today.

Waze can be used on an Android, iPhone, Windows phone or Blackberry.

There is a security risk when using Waze while driving. In December, the Los Angeles Police Chief Charlie Beck sent Waze a letter complaining about the police-locating feature saying it would be "misused by those with criminal intent to endanger police officers and the community."



# CSI: Campus Safety Investigations

Taken from weekly Campus Safety reports

### If you ever need help

Call Campus Safety at 253-535-7441  
Email Campus Safety at csin@plu.edu  
Or visit campus safety in the lower level of Harstad Hall

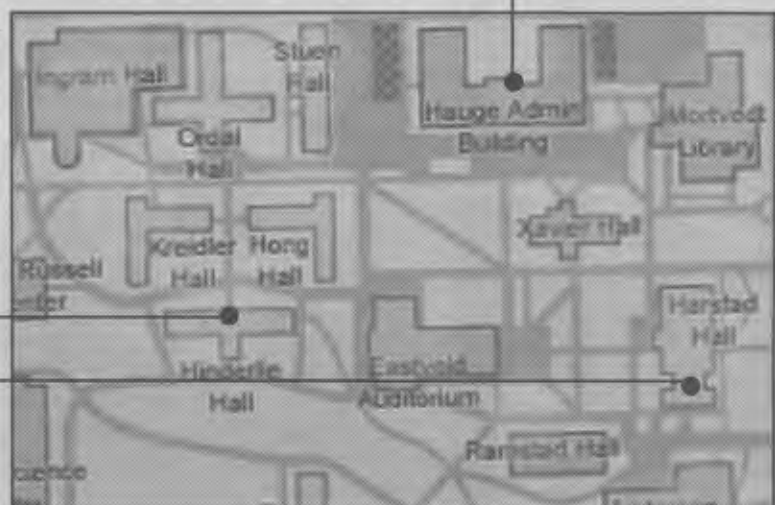
**Alcohol Policy Violation in Hinderlie**  
Campus Safety received information of an Alcohol Violation in Hinderlie Hall. CSAF and the Resident Assistant attempted to contact the resident but there was no answer at the door. CSAF performed a room check with the RA and discovered the room empty but found alcohol in plain view. The alcohol was photographed and discarded. The incident has been sent to Student Rights and Responsibilities for review.

### Medical Aid in Admin

Campus Safety received a call explaining that a visiting high school student called 911 for medical aid. The student had fainted while attending an event on campus. When CSAF officers arrived, the student was conscious and sitting. Pierce County Fire and Rescue arrived and took over evaluation of the student. The student's chaperone was present and contacted her parents. The student was then transported to Mary Bridge Children's Hospital.

### Security Violation in Harstad

Campus Safety received a call from Residential Life reporting an unwanted guest outside of a room in Harstad. CSAF notified the Pierce County Sheriff's Department who then contacted the non-student. CSAF issued a Restriction from Campus to the non-student. ResLife and CSAF contacted the original caller with the complaint, and she believed two students in Harstad were letting the non-student in so he could stay in an unoccupied room. CSAF discovered an unsecured room with signs of having been lived in. A review of surveillance footage showed the two students swiping the man in. The incident has been forwarded to Student Rights and Responsibilities for review.





# Canines view divine

**ERIN FLOM**  
Guest Writer

Ever wondered what happened to Charlie Brown and friends when they grew up? The play "Dog Sees God: Confessions of a Teenage Blockhead" finds the famous Peanuts characters in high school, dealing with more than childhood shenanigans.



PHOTO COURTESY OF KIERA STEVENS  
Sophomore Kiera Stevens is the director of "Dog Sees God."

"Dog Sees God" deals with substance abuse, homosexuality and bullying. The director, sophomore Kiera Stevens, admitted that the play can be "in your face" at times, but that it is "shocking in a way that makes you think."

The play also deals with "insecurity,

self identity and social identity," first-year Nic Roycroft said. Roycroft plays Charlie Brown.

"It's kind of a coming out story," senior Grant Hillard said. "But at the same time it's a lot about being yourself and feeling free about that."

Hillard plays Matt, a high school aged Pigpen.

Although the actors may be playing iconic characters, "the writer has taken those characters that we're familiar with and created like completely new characters," Hillard said.

"When you grow up, you are vastly different than you were even a year ago," Roycroft said. "We're constantly going through changes and so I feel like it does give a little bit of leeway to kind of play up whatever I want to be, whatever [Charlie Brown] is."

Stevens felt a strong connection to the story. "I didn't choose the play, the play chose me," she said. After reading the script, she knew she wanted others to be able to see the play.

The play is running independently

from Pacific Lutheran University's theater department, and is entirely student produced.

Stevens felt limited by the guidelines students have to direct shows. Stevens explained that the two student directing programs, Upstart Crow and APO Main Stage, have specific guidelines for a show. APO Main Stage shows are reserved for bigger productions, while Upstart Crow is for smaller shows in the Black Box.

"[My show] didn't work within either of those spaces, and I just felt very restricted" Stevens said. "So I thought to just do it on my own."

Although there are many acting and directing majors "there's not a lot of opportunities for us to be able to direct," Stevens said. Both Hillard and Roycroft expressed interest in directing in the future.

Stevens wants a directing program for students called Dog House. Dog House would give students "a little bit more room to experiment" with their theater skills.

Stevens envisions this program giving opportunities to students to not only direct, but for writers and actors as well.

Since the show is independent, Stevens had to do everything on her own, from the initial analysis to planning auditions and callbacks.

"It all feels worth it because I'm very passionate about doing this show so it's fun work," Stevens said.

Although she directed one act in high school, this is Stevens' first time directing

"I didn't choose the play, the play chose me."

**Kiera Stevens**  
Sophomore

at PLU.

"The way that the show is turning out is giving me more confidence in myself that I can direct things," Stevens said.

The show opened with a student preview on April 2, and runs through April 4. All shows are in the Cave at 7:30 p.m.

## Artist-owned Spotify competitor unveiled

**JEFF DUNN**  
Copy Editor

"Without music, life would be a mistake," recording artist Alicia Keys said, quoting German philosopher Friedrich Nietzsche as she and several other artists signed a "Declaration" that marked the official launch of the new streaming service Tidal.

Rapper and entertainment entrepreneur Jay Z heads up the service, promising higher quality streaming and a focus on artist compensation. Tidal is the

American branch of the Swedish-based streaming media company Aspiro, which Jay Z purchased March 13 for \$56 million.

Streaming music and royalty payments are some of the most prominent issues in the music industry today, and Jay Z believes Tidal is the solution. Several other artists will claim partial ownership of Tidal, including Jay Z's wife Beyoncé, Alicia Keys, Chris Martin of Coldplay, Daft Punk, Kanye West, Jack White and Deadmau5.

"This is a platform that's owned by artists," Jay Z said in an interview with *The New York Times*.

"We are treating these people that really care about the music with the utmost respect."

Royalties on streamed media aren't only a problem for emerging artists, either.

Last November, Taylor Swift delayed the release of her newest album, "1989," on Spotify. Soon after, Swift removed her discography from the site entirely.

Swift's label head, Scott Borchetta, had a dispute with Spotify over the actual amount Swift was being paid for streaming her music through the site, saying she was paid less than one percent of what she was promised.

The streaming business is incredibly competitive right now. Spotify alone has 45 million users (15 million paying) as of January, and the Internet radio service Pandora reported 250 million users as of March 2014. But much of this commercial success never reaches the artists.

Spotify has received criticism and been accused of not compensating artists fairly. Because of the way Spotify pays record labels, much of the money that an artist makes via Spotify isn't distributed properly.

Spotify offers two streaming



options: an advertisement-supported free version and a premium version that costs \$9.99 per month.

Neither of Tidal's streaming options will be free. One option costs \$10 per month and includes access to standard quality streaming of music and videos, plus some editorial content.

The second option costs \$20 per month with access to "High Fidelity" streaming music and videos in addition to the editorial content.

Sophomore Makayla Tolmie is a Spotify Premium user of three years and a Lute Air Student Radio disc jockey at Pacific Lutheran University. She uses Spotify to stream music on her radio show.

"As a college student, it's really convenient to have a Spotify

account," Tolmie said, referring to the half-off deal that Spotify offers to anyone with a student email address. "I do feel bad about it sometimes, because I know the artists aren't being paid what they deserve."

Tolmie purchases vinyl copies of any albums she really likes. She thinks the \$20 per month price for a Tidal subscription will attract a crowd, but it won't be a college crowd.

"As far as selling it to college students goes, nobody's going to buy it, because it's like going back to buying full price albums," Tolmie explained. "[For \$240 dollars] if you're into vinyl, you can definitely get a nice turntable and speakers for about that much."



## A&E

"Dog Sees God"  
7:30 p.m. April 3 and 4  
in The CAVE

KammerMusikere Concert  
(Orchestra Series)  
8 p.m. April 7 in Lagerquist

Day of Vocation Keynote  
Dune Ives  
6 p.m. April 8 in Regency Room

"Shadow of the Raven"  
Viking Film Series  
7 p.m. April 9 in Scan Center

## ONLINE



**Terran's Take:**  
Terran Warden discusses  
Zayn's surprise departure  
from One Direction.



**Tuesday Tunes**  
Brooke Thames explains  
what's in the upcoming  
Tacoma concert scene.

Full stories online: <http://mastmedia.plu.edu/>

## NEWS@NINE

Every Thursday night at 9 p.m.!

On the aGENda

This week, Genny Boots  
talked to PLUtonic  
member junior  
Domenic DeSoto about  
their International  
Championship of  
Collegiate A Cappella  
semifinal performance!



Watch Thursday's show online:  
<http://mastmedia.plu.edu/>



# REVIEW Kendrick Lamar's "To Pimp a Butterfly"

**DAVID MAIR**  
Staff Writer

The second album of rapper Kendrick Lamar is just as politically driven as his first, though this time with a stronger jazz/funk influence.

"To Pimp a Butterfly" is the follow up album to Lamar's 2012 album "Good Kid, Mad City."

"To Pimp a Butterfly" is a fluid story of how Lamar views the way blacks struggle in America today and how he, as a black artist from Compton, Calif., fits into it all. In contrast, his previous album was a snapshot of a night from Lamar's childhood.

He acknowledges that the issue of race is not because of any one person or group. It's a collective issue.

For example, in "u" he takes a look at himself practically screaming, "You ain't no brother, you ain't no disciple, you ain't no friend / A friend never leaves Compton for profit or leaves his best friend."

His response to this comes in a later track titled "i," where he builds on the mantra of "I love myself."

The theme of the album is incredibly important because of the recent shootings of black men

by police officers.

Lamar points to the government in "Hood Politics," rapping, "From Compton to Congress / Set trippin all around / Ain't nothing new but flu of man DemoCrips and ReBloodicans / Red State versus a Blue State, which one your given? They give us guns and drugs, call us thugs."

The cleverness in his writing is shown through poem he reads one line at a time following each song, culminating in the last track, "Mortal Man," where he reads the poem in full.

One metaphor Lamar uses is that of a caterpillar becoming a butterfly.

Lamar then proceeds to discuss the poem with legendary rapper Tupac Shakur by using old interviews that applied to his poem and questions he asks of Tupac.

Lamar explains that a caterpillar is "prisoner to the streets that conceived it" and the way for it to survive is to "consume everything around it."

As the caterpillar enters its cocoon it's trapped, "no longer [able] to see past his own thoughts."

When the butterfly finally emerges it "sheds light on situations never considered before by the caterpillar."

It's clear by the end, the album was Lamar reading Tupac a poem, explaining why he wrote the poem, and hoping that Tupac could give him perspective on his position in the music industry.

The musicality of the album is a 180 of what Lamar did in "Good Kid, Mad City," in addition to being different than the beats used by many popular rappers today.

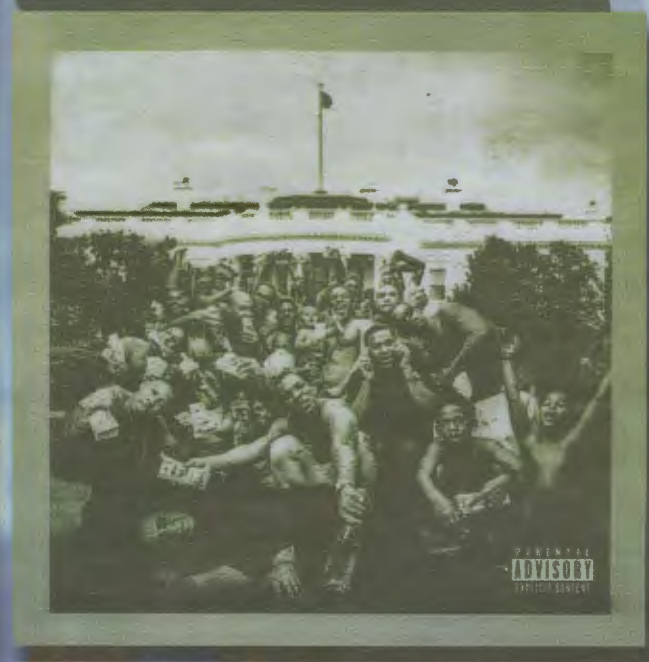
Lamar approached "To Pimp a Butterfly" from a completely different angle musically. He took it back to the first days of hip-hop using free jazz and funk.

During a *Rolling Stone* interview, he said that he had been listening to a lot of Miles Davis, along with Parliament.

In the same interview, his producer and long time friend Mark "Soundwave" Seals said that "[Lamar] talks in colors all the time: Make it sound purple! Make it sound light green!"

The artistic decision Lamar made to have a large jazz influence sets the album apart from other rap albums produced today. It also created a chill, funky feel that complements the politically driven story.

The album presents a political message in such a poetic manner with music that makes any listener want to groove.



Kendrick Lamar's new album, "To Pimp a Butterfly," (pictured) was digitally released on March 16, one week earlier than scheduled.

Washington  
**STATE FAIR**

**SPRING FAIR**  
PUYALLUP APRIL 16 - 19



WASHINGTON'S  
**BIGGEST  
CELEBRATION  
OF SPRING**

PARKING IS FREE!

**SPRING FAIR HOURS:** Thursday 2pm - 10pm • Friday & Saturday 10am - 10pm • Sunday 10am - 8pm

**FREE KIDS THURSDAY!**  
Thu, 4/16 ONLY • 2pm - 10pm  
Kids ages 0-15 get FREE gate admission (with a suggested non-perishable food donation)  
Plus, save more on rides & games on Thursday!

**MOTORSPORT MAYHEM** Presented by **O'Reilly**  
**MONSTER TRUCKS** Friday, 4/17 7:30PM  
**SLAMFEST DEMO DERBY** Saturday 4/18 7:30PM  
Sunday 4/19 4:00PM

**NORTHWEST LIVING & GARDEN**  
Workshops with local experts, artistic garden displays and more.  
Presented by **SleepCountry**

**BUY TICKETS IN ADVANCE AND SAVE!**  
DISCOUNT TICKETS AVAILABLE AT:  
**Fred Meyer SAFEWAY South Hill**  
IN PIERCE AND SOUTH KING COUNTY.

Download our Mobile App  
available on the Apple App Store or Google Play

#ItsDucky

BUY TICKETS ONLINE AT  
**THEFAIR.COM**



# NEW YORK & WASHINGTON, D.C.

**BROOKE WOLFE**  
Staff Writer

For Spring Break, a quick trip to New York City and the District of Columbia was in order. In New York (skyline, right), I spent time traveling on the subway, being an embarrassing tourist and discovering new hidden hot spots.

Within the first couple hours in the city, I purchased a Metro Card, which is essential to traveling within Manhattan.

Traveling by taxi can be time consuming because of traffic and can also be expensive. A subway ride is \$2.75 compared to \$10 plus per taxi ride.

After figuring out transportation, I visited Times Square on the first night, followed by Central Park (left) and a Broadway show the next.

There are multiple options to get cheaper tickets to see a Broadway show. Rush tickets are sold the morning of the show and are given to the first customers in line.

The tickets are usually at least 50 percent off during rush. Box offices open for rush at 9 or 10 a.m., depending on the theater. Tickets are not sold online.

There are also lotteries which provide the option to get tickets even cheaper. Lottery tickets are around \$30 per ticket and take place two and a half hours before the nightly show. Groups of one or two people line up to put their name in the lottery.

Depending on the show, about 20 tickets are chosen for each night and those individuals are responsible for having cash to buy the tickets on the spot.

Student discounts and cancellation tickets are other ways to get around paying the full price.

After 6 more days traveling around Staten Island, Brooklyn (The Brooklyn Bridge, left) and the East Village, I hopped on a bus to D.C..

A bus or train can be taken to get to D.C. from New York. The train is more expensive and stops often on the route. The bus is cheaper but can get stuck in traffic. I bought my ticket the day before I left and the Amtrak ticket was \$84 and a Bolt Bus ticket was \$11, so I went with the bus ride.

Once in D.C., I checked into my hostel and started exploring the city. I stayed in a hostel that was two blocks from Union Station and was walking distance to the National Mall.

The National Mall includes the Capitol Building, the Washington Monument (right) and all of the Smithsonian's, except the zoo. The museums and monuments are free and extremely packed with people, so plan accordingly.

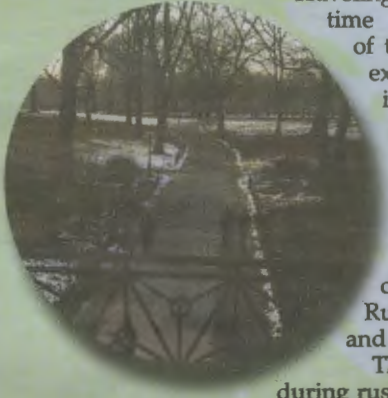
My highlights of the National Mall included going to the National Archives, the Washington Monument and the Capital Building.

The National Archives house the Declaration of Independence and the Constitution along with the Bill of Rights. There is high security in this building and photos are strictly prohibited. Be prepared to wait in line to see the documents at least 30 minutes and take the restrictions seriously, there are video cameras in every corner.

The Washington Monument was special because it looks over a reflecting pool and is surrounded by American flags around the entire pavilion (left). To go inside the monument, tickets need to be reserved 2 hours before the tour. Going to the monument to get a ticket before starting another monument tour provides the opportunity to see most everything in a day.

The Capitol Building is simple because contacting your Congressman allows for a private tour. My current congressman is Denny Heck, and his office set up a private tour of the building for me which was different than the general public tour. The building has high security and surrounded with armed guards, bringing only the essentials can cut down on the security check time to get into the building.

To end the trip, I flew back to SeaTac out of the Dulles International Airport. Be aware that the Reagan International Airport is 15 minutes out of D.C., while the Dulles International is around 50 minutes away.



## How to ball on a budget

### Europe

Airfare across the Atlantic at the best price takes dedicated effort to find cheap flights. Aggregating sights like...

**Take carry-on baggage.** It makes travel easier in any country that...

**Budget airlines and budget hotels.** They aren't the most comfortable, but enough money saved to...

**Read about where you're going.** but when you know what you're doing, time and...

**Scoop up student discounts.** museums, historical sights, and... be a part of...

**Cook for yourself!** Eat consciously. Instead of spending money for a really nice meal, some meat makes for...

**Hostels in popular destinations are the cheapest option.** Check out couchsurfing.com. Some long lost friends might be willing to crash on. What about a dorm room or a private...

## TRAVEL

What's better than hearing a travel story? Learning how to go on one. Wolfe and Genny Boots took the West Coast and Europe, respectively, and their stories and even better...

## Packing light



Traveling with a backpack is a challenge that has endless rewards. Flying on an airplane allows passengers to bring one carry on and one personal bag. This can equate to a backpack and a purse for those passengers who don't wish to check a bag.

Checking a bag is a hassle and costs \$15-\$25 per bag depending on the airline. Checking a larger bag also includes waiting for the bag after getting to the destination, which can be a pain.

Instead of paying for a suitcase, ditch the extra outfit options and commit to packing less and only bringing a carry on.



# an Edition

atic is not cheap. Finding the tion but it is worth the time and ts. Consistently checking flight Kayak or CheapOAir can help save big.

only and don't check luggage. nd helps resist buying things in won't fit in your pack.

is companies are everywhere. nfortable of rides, but you'll have y buy yourself a nice dinner after ase the pain.

are going. This seems obvious, t's around you can budget both money accordingly.

or youth deals when visiting ts or national parks. It can pay to r college student!

oolean food is delicious, but buy eating out all the time, save your meal. A baguette, cheese and cheap lunch and is oh so Euro.

stinations are not always the t with companies such as AirB&B ven scan through Facebook for who might be abroad and have a do you prefer, a sixteen-person e apartment at the same price?

# EL TIPS

about an awesome spring break trip? of your own. Mast writers Brooke k grand adventures to the U.S. East tively, and came back with great tips on how to do it yourself.

ght...



### What to pack

Before deciding what to bring, assess how long the trip is and what types of activities will be done while you are there. Always pack less because most things can be purchased at the destination and do not need to be brought on the plane.

For week-long trips, two pairs of pants, two shirts, one sweater, one pair of shoes and a jacket are plenty. When planning the outfits for the week, include the clothes that will be worn on the plane. If an item is not going to be worn at least three times, leave it at home.

Depending on the climate of the destination, clothing items will be switched out. Instead of a scarf and gloves, a swimsuit and sunglasses might be more appropriate.

Do not pack towels, socks, umbrellas or other accessories along this line. Those things can be bought once you land and do not need to take up space in the backpack.

### GENNY BOOTS News Writer

Who goes to Europe for just a week? Clearly someone with a glutton for sleep deprivation and language barriers. Or a person with no intention of ever NOT being a broke college student.

All this aside, I spent my spring break across the pond in Belgium and the Netherlands. After a year of travel through Latin America, my passport finally gained a stamp from the European Union.

I went to eat waffles, admire European architecture and visit a good friend who studies there. I started my trip with 11 hours of flying right into the Belgian capital of Brussels.

The city of Brussels (Brussels Gardens, left) has a little under 1.2 million people and is midway between France and the Netherlands.

The Netherlands is relatively overlooked as a holiday destination. And understandably so: the weather is gloomy, there are no famous icons like the Eiffel Tower or Will and Kate, and it is very close to more popular destinations, such as Paris and London.

I found during my five days in Belgium that there is a lot to love — you just have to look a bit for it. The beer is the best in world, there is a chocolate shop on every corner and the people are relaxed and genuine. The national hero is a three-foot statue of a boy peeing — it was the fantasy world that I didn't even think to fantasize about.

Shortly after settling into Brussels, I traveled by bus to Amsterdam. There are several cheap bus lines that run this three hour trip between the two cities.

Amsterdam is well-known for its liberality toward drugs and prostitution. It is impossible to ignore the whiffs of weed and the "relaxed" attitudes of the people.

I ended up just wandering through the small streets and along canals. Amsterdam houses some of Europe's best museums, and I found a bit of culture amidst the Rembrandt, Vermeer and Van Gogh at the Rijksmuseum (exterior, right).

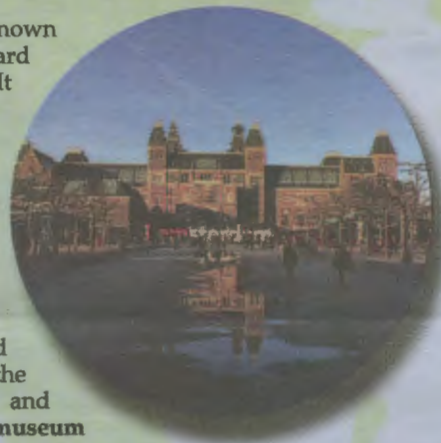
After a solid two days in Amsterdam, I rode bikes in the streets, nearly freezing my fingers off. I walked with a mix of curiosity and sadness through the Red Light District, looking at the women in the windows. I binged on free cheese cubes at the Cheese Museum.

Amsterdam was neither overrated or underrated. Much like the people on the streets, it was chill.

Once back in Brussels, I traveled north to the city of Bruges (canalside view, left). In typical nonsensical Belgian fashion, Bruges was the most adorable, but also worst-smelling, city I have ever been to. The cobblestone streets and canals are reminiscent of Amsterdam. For all Bruges' charm, the city sits on a very old sewer system and it is unavoidable. Only in Belgium.

The week wrapped up with the Cyprus vs. Belgium futbol game, where Belgium swept the match 5-0. It was a perfect end to what I love about travel and my adventures abroad: no matter how weird, bizarre, or outlandish a place may be, at the end of the day, there is something very familiar in coming together, drinking and cheering for the home team.

While the time zones proved to be a worthy foe, my spring break abroad was one for the books. Until next time, Europe!



# THE NETHERLANDS & BELGIUM

**MORE TIPS ONLINE**  
<http://mastmedia.plu.edu>

Online-only: Get more tips with online exclusives "5 New York activities under \$5" and "What to do on long flights."



# Increase awareness on Transgender Day of Visibility

**ANGIE TINKER**  
Matrix Editor

March 31 was the international celebration of Transgender Day of Visibility. At Pacific Lutheran University, it's important to celebrate Transgender Day of Visibility by highlighting the ways that trans issues come up on campus.

Transgender refers to people whose gender identity doesn't match the biological sex they were assigned at birth. Simply put, just because a doctor says, "It's a girl!" when someone is a baby doesn't mean that they are a girl.

One way the gender binary is evident on campus is through restrooms. For people who don't fit the gender binary of male/female, or for people who don't match traditional notions of how men and women look, choosing a public restroom can be daunting.

Amber Jane, a trans woman and former lute, described her first experience using a women's restroom in PLU.

*"Simply put, just because a doctor says, 'It's a girl!' when someone is a baby doesn't mean that they are a girl."*

"I felt terrified and shook a lot." Jane continued, "Whenever someone else was in there I kept quiet and my face down and tried not to cause a scene with them."

Another way gender affects trans students is in class. Every semester, I have to write an email to professors explaining that my gender and name don't match the official record that PLU has.

This record is hard to change and includes student emails, Banner Web profiles, and Lute Cards.

Chris Erikson, a non-binary graduating senior, explained a possible solution:

Erikson said that allowing students

to edit their gender and name on their student profile lets professors see a student's preferred identity.

Such a change would make transitioning at PLU less of a hassle.

"I personally would love there to be more gender neutral bathrooms," Erikson said. "I always feel very weird when I have to use the female bathroom in [the Hauge Administration building] because I have no clue if there are any gender neutral bathrooms."

PLU has made positive strides, though. Both the Women's Center and the Diversity Center are safe spaces for gender exploration. Gender neutral residence hall wings and bathrooms have also made an appearance on campus, though they're just the start. It's important to celebrate by making visible the ways that trans issues come up on campus.

Resources for trans students can be found at places like the Tacoma Rainbow Center online or in person.



## THE MOORING MAST

Pacific Lutheran University  
12180 Park Ave S.  
Anderson University Center Room 172  
Tacoma, WA 98447

**EDITOR-IN-CHIEF**  
Reland Tuomi  
mast@plu.edu

**BUSINESS & ADVERTISING MANAGER**  
Chloe Choi  
mastads@plu.edu

**NEWS EDITOR**  
Samantha Lund

**A&E EDITOR**  
Matthew Salzano

**OPINION EDITOR**  
Ashley Gill

**SPORTS EDITOR**  
Austin Hilliker

**COPY EDITOR**  
Brittany Jackson

**COPY EDITOR**  
Jeff Dunn

**ONLINE EDITOR**  
Allie Reynolds

**MAST TV**  
GENERAL MANAGER  
Allie Reynolds

**MULTIMEDIA EDITOR**  
Campbell Brett

**NEWS @ NINE PRODUCER**  
Zachary Boyle

**ADVISERS**  
Cliff Rowe  
Art Land

Please  
recycle your copy of  
**The Mooring Mast**



## Letter From the Editor: Graduation Fees should be Explained

**ASHLEY GILL**  
Opinion Editor



The \$100 graduation fee that all graduating seniors must pay, participating in the ceremony or not, was discussed in the March 13 issue of *The Mooring Mast*. The article, written by reporter Genny Boots, examined where the money goes and why it is important for students to pay it.

Students are given no warning of the \$100 cost to apply to graduate from Pacific Lutheran University. They find out when

they apply to graduate online and are required to pay it in order to complete the application. If students decline the fee, the application is canceled. This is especially troublesome if students are not prepared for this extra cost and have to save up or even take away from their budgets for food and rent.

"I'm fortunate to be a working student," senior Haley Ljunggren said. "But it definitely was an inconvenience and I had zero extra cash for anything other than bills until my next paycheck."

There was a lot of interest regarding where the money actually goes to considering we already pay so much in student fees as it is.

During an interview between writer Genny Boots and Senior Advisor to the President Kris Plaehn, the fee was explained.

"It provides some of the funding for things like printing the diplomas, having the diploma cover holders. It also provides things like paying for the Tacoma Dome, paying for those events, paying for the parking lots," Plaehn said. "It goes to pay for those specific components of commencement."

Initially, this is a reasonable explanation for the high

graduation fee. However, I have participated in two graduation ceremonies at the Tacoma Dome and none of which required extra fees to support it. My local high school graduation took place at the Tacoma Dome, and while we had to pay for our cap and gowns, there was not an extra cost to graduate or to fund the few hours at the Tacoma Dome, parking or any other potential costs.

In fact, when I graduated from Pierce Community College in Puyallup, we not only graduated at the Tacoma Dome, but also received our brand new cap, gown, tassel and a very nice diploma cover for free. The costs were technically already paid for through our tuition costs, even though that quarter's tuition was not any higher than any other quarters that I had paid for.

My history of graduation ceremonies fueled my curiosity and disappointment with PLU. After the news article that was published in the last printed issue of *The Mast*, I was angry and I felt like we were not getting the complete truth. Saying the fee covered the cost of our diploma holders and the Tacoma Dome felt like an easy and believable thing to say for those who are not local to this area and have never participated in a ceremony at the Tacoma Dome before.

There is one aspect that could explain the contradictory information from the Senior Advisor to the President, which is the fact that PLU is a private institution without any federal funding. Even if public colleges and high schools received government money to cover the cost of the Tacoma Dome and other graduation costs, that reasoning should be explained to the student body.

Students should be warned about the high graduation fee well in advance and students who do not plan to participate in the ceremony should only have to pay a small fee to cover the cost of their diploma.

### POLICIES AND PROCEDURES

The responsibility of *The Mooring Mast* is to discover, report and distribute information to its readers about important issues, events and trends that impact the Pacific Lutheran University community.

*The Mooring Mast* adheres to the Society of Professional Journalists Code of Ethics and the TAO of Journalism.

The views expressed in editorials, columns and advertisements do not necessarily represent those of *The Mooring Mast* staff or Pacific Lutheran University.

Letters to the Editor should be fewer than 500 words, typed and emailed to mast@plu.edu by 5 p.m. the Tuesday before publication. *The Mooring Mast* reserves the right to refuse or edit letters for length, taste and errors. Include name, phone number and class standing or title for verification.

Please email mastads@plu.edu for advertising rates and to place an advertisement.

Subscriptions cost \$25 per semester or \$40 per academic year. To subscribe, email mast@plu.edu.

Follow  
**The Mooring Mast**  
On Twitter  
**@PLUMast**





# Sexual Anatomy should be discussed not hushed



In *The Mooring Mast* two weeks before Spring Break, March 6, an article called "How to Sound Smart About Penis Size" was published. It was in response to a international scientific study that looked at average penis size and girth of men around the world.

A week later, I read the letter to the editor by first-year Carly Stauffer discussing her displeasure with "How to Sound Smart About Penis Size." I applaud her on her courage to speak out about her

feelings and recognize all displeasures and concerns as valid.

However, I disagree with her assertion that this article went too far and it shouldn't have been published. As a biology student and a male, I do not find any reason for anyone to be upset about penises, as they are a natural part of the male body. Also, many men feel their masculinity is tied to penis size as our culture emphasizes bigger is better. This study is showing college males that there is no reason to be ashamed of any part of their body.

While many may view this as unnecessary, I

*"I do not find any reason for anyone to be upset about penises as they are a natural part of the male body."*

believe things like this should be talked about and discussed.

Junior communication major Henry Smith agrees and believes "not talking about it promotes ignorance and creates a social taboo that shouldn't exist."

I feel that *The Mast* did an excellent job in the way they reported the

article. I hope that future Lutes, alumni and anyone else who reads *The Mast* knows that we are creating a safe environment to discuss topics like this and provides everyone with a chance to grow and understand the human body while giving men reassurance that there is no right size for penises.

## Study Break

**CLASSIFIEDS**

HOUSE for rent 1 block from Mortvedt Library! 4 bedrooms. We require group of four students. \$1600 month. (\$400 room). Two bathrooms, two refrigerators, washer/dryer. Lease June 2015 - June 2016. Okay to sublease. Rental Application required. New flooring. More info at: <http://plurental.homestead.com/>

**JOB OPENINGS**

The Editor-in-Chief position is open for next year as well as other leadership positions within Student Media. Everyone is encouraged to apply!

Visit <http://www.plu.edu/studentmedia/apply/> for more details.

### Little Carly Goes to College by Carly Stauffer

#### THE HONEST STUDENT



## Life Hacks

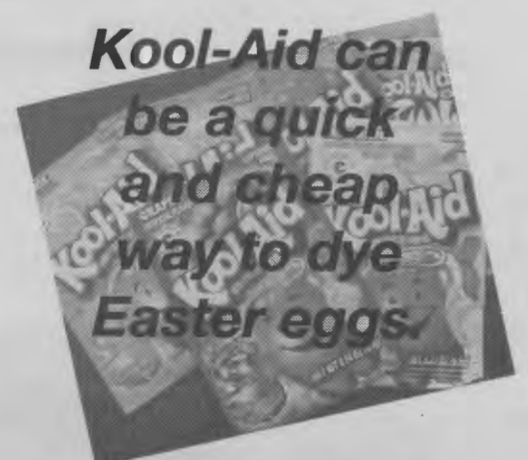


Photo Courtesy of Creative Commons



# SPORTS SCOREBOARD

## Baseball

TEAM	WINS	LOSSES	CONFERENCE	STREAK
Whitworth	20	8	11-4	Won 10
Pacific Lutheran	20	8	12-6	Won 2
Willamette	18	7	10-6	Won 2
Puget Sound	12	13	10-6	Lost 2
Linfield	18	9	8-7	Lost 1
George Fox	12	16	8-7	Lost 1
Pacific	9	16	5-10	Lost 1
Whitman	5	18	4-11	Won 1
Lewis & Clark	5	25	2-13	Lost 4

### Next Game

Doubleheader: April 11 @ 12 p.m. & 3 p.m. @ UPS



VS.



## Softball

TEAM	WINS	LOSSES	CONFERENCE	STREAK
George Fox	23	5	13-3	Won 3
Whitworth	22	6	13-3	Won 7
Pacific	20	10	10-6	Won 2
Pacific Lutheran	15	11	8-6	Won 4
Linfield	17	9	6-8	Lost 2
Lewis & Clark	8	19	5-11	Lost 4
Willamette	7	17	4-10	Lost 3
Puget Sound	4	22	1-13	Lost 4

### Next Game

Doubleheader: Today 2 p.m. & 4 p.m. @ Willamette



VS.

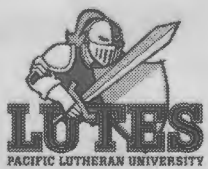


## Men's Tennis

TEAM	WINS	LOSSES	CONFERENCE	STREAK
Whitman	11	5	5-0	Lost 1
Pacific	10	4	6-1	Lost 2
George Fox	10	5	5-2	Lost 3
Lewis & Clark	6	5	5-2	Won 1
Whitworth	2	7	2-3	Lost 2
Willamette	2	9	2-3	Lost 6
Pacific Lutheran	2	11	2-5	Lost 7
Linfield	1	7	1-5	Lost 6
Puget Sound	1	7	0-7	Won 1

### Next Match

Tomorrow: 11 p.m. @ UPS



VS.



## Women's Tennis

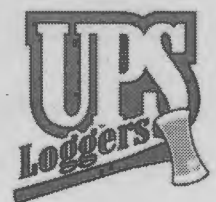
TEAM	WINS	LOSSES	CONFERENCE	STREAK
Lewis & Clark	12	2	7-0	Won 12
Whitman	9	5	6-0	Lost 2
Linfield	9	4	5-1	Won 2
Whitworth	6	5	5-2	Lost 1
George Fox	7	7	3-4	Lost 1
Pacific	5	6	2-5	Won 2
Pacific Lutheran	5	6	1-6	Won 3
Puget Sound	3	6	1-6	Won 1
Willamette	1	12	0-6	Lost 2

### Next Match

Tomorrow 1 p.m. vs. UPS



VS.



## Men's Golf

### Lewis & Clark Pioneer Invitational

TEAM	RANK	PAR	TOTAL
Whitworth	1	+40	328
Lewis & Clark	2	+48	336
Pacific Lutheran	3	+56	344
Linfield	4	+73	361
Willamette	5	+90	378
Pacific	6	+163	451

### Next Tournament

Today: Olympic Invite @ Gold Mountain Golf Club



VS.



PHOTO COURTESY OF GOLD MOUNTAIN GOLF CLUB

## Women's Golf

### Lewis & Clark Pioneer Invitational

TEAM	RANK	PAR	TOTAL
Whitworth	1	+40	328
Lewis & Clark	2	+48	336
Pacific Lutheran	3	+56	344
Linfield	4	+73	361
Willamette	5	+90	378
Pacific	6	+163	451

### Next Tournament

Today: Whitman Invitational @ Wine Valley Golf Club



VS.



PHOTO COURTESY OF GOLD MOUNTAIN GOLF CLUB



# SPORTS SCOREBOARD

## Men's Track & Field

### Peyton Scoring Meet

TEAM	RANK	SCORE
Pacific Lutheran	1	182
Puget Sound	2	159
Olympic College	3	82
Green River CC	4	60
Everett CC	5	36
Whitman	6	26
Trinity Lutheran	7	13
Christ Life	T-8	10
Whitworth	T-8	10

### Next Meet

Tomorrow: Shotwell Invitational in Tacoma, Wash.

## Women's Track & Field

### Peyton Scoring Meet

TEAM	RANK	SCORE
Puget Sound	1	186
Pacific Lutheran	2	136
Olympic College	3	63
Green River CC	4	56
Everett CC	5	52
Whitman	6	20
Trinity Lutheran	7	10

### Next Meet

Tomorrow: Shotwell Invitational in Tacoma, Wash.



PHOTO COURTESY OF GOLUTES.COM

## Hilliker's Highlights: It's more than just colors

### Austin Hilliker Sports Editor

Jet black and a rich gold. Two colors that have defined Pacific Lutheran University since it first opened in 1890.

The colors not only represent the prestigious institution and its rigorous education system, they also represent the hard work, dedication and pride of PLU athletics.

### It's Personal

I've always taken a sense of pride in school colors that I represent. In junior high, it was blue and yellow. In high school, it was red, white and blue. No matter where I went, I wanted people to know the school that I attended.

In high school, if someone would have told me that in the near future I would be decked out in black and gold, I would have laughed. Black and gold were the colors of my rival high school. There was no way



PHOTO COURTESY OF GOLUTES.COM

Black and yellow are the official colors of Pacific Lutheran University.

that would happen.

I now stand corrected. The clothes in my closet, black and gold. The decals on my car, black and gold. Even my phone case, black and gold.

### On the field

For many PLU athletes, putting on a black, gold or white jersey was a feeling all its own.

For me, I was lucky enough to experience the feeling first hand on the football field.

With "Lutes" spread across the back of the jersey, my teammates and I knew right away that everything that we did from that point on was a reflection of ourselves and the school that we play for.

As a football player, there was an addition to this rule. We went the extra mile to make sure that we were genuine, thoughtful and caring on the football field. Yes, even on the

football field.

We would help opposing players up off the ground, tell them that they were doing a good job and other things of that nature. We all played for the black and gold that we were wearing. Not just for ourselves.

### Off the field

Within the community it was a special privilege to tell someone that you played sports for PLU.

Manners meant everything. Saying hello, goodbye, please and thank you.

Most of the time, people's eyes would light up. They would be amazed that a young person was portraying a school so well. Unless it was a University of Puget Sound student or alum, for some reason they really don't like us. Either way, we always showed them respect. I digress.

Each and every time I get the chance to wear the colors, I'm proud of it. I'm proud to represent a school, community and team that stands for so much. I'm proud to be a Lute.

## Baseball grabs final win in campaign, Drive to 125

### David Mair Staff Writer

All year students have been watching the Drive to 125 tracker at the Old Main Market slowly but surely go up. Finally, their patience was paid off during the baseball game on March 31.

In honor of Pacific Lutheran University turning the big 1-2-5, a goal was set at the beginning of the year of 125 wins for all the PLU sports to reach together.

Now that the goal has been reached, the student body has been invited to celebrate on April 10 from 10:00-12:00 p.m. in Red Square.

It was a Battle of the Sound as PLU's

baseball team completely chopped down the University of Puget Sound Loggers 6-1 on Tuesday, March 31.

Earlier in the season the two faced off against each other, the result was similar as the Lutes shook the dust off their cleats victoriously, winning 9-3.

The stands were barely filled at the PLU baseball stadium. The 40 brave Lute fans that came out though were bundled up, holding umbrellas as they endured the cold rain for two and half hours.

Stepping onto the diamond the Lutes were 19-8. The UPS Loggers were 12-12.

Junior Ty Donahue and senior Jake Otness were the pitchers for the game. The first two

innings went by with neither team's feet touching home plate.

It was not until the bottom of the third when senior infielder Bo Pearson scored. From there, the Lutes kept on shinning regardless of onset of rain.

Sophomore infielder Ben Welch made the next point when Pearson singled out to left field advancing sophomore infielder Tanner Williams to second base.

Without retaliation from the Loggers senior outfielder Collin Nilson singled to right field sending first-year outfielder Connor Cantu home.

During the seventh inning, things got tense as the Loggers scored off a single through

right field.

But the tense moment was merely a blink of the eye as the Lutes gained three more points in the bottom of the seventh.

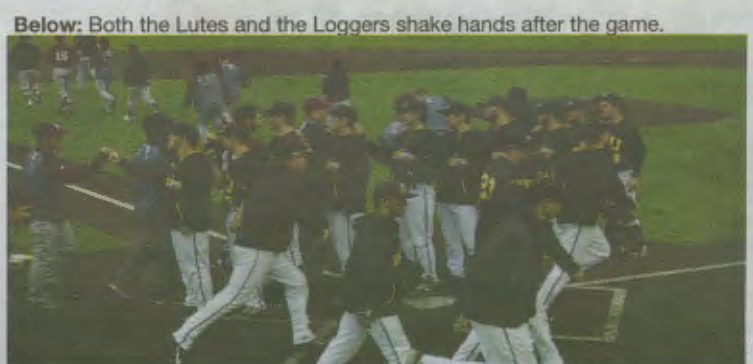
The first two were from Cantu along with sophomore infielder Frank Airey, who both scored off junior infielder Tyler Thompson singled up the middle.

Finally, Thompson gave the Lutes their sixth and final point from a single through the left side by senior infielder Kit Banko. Making the game 6-1.

The Lutes are now 20-8. The Lutes will take to the road for the next three games all of which are against the UPS Loggers.



Above: The baseball team huddles up after their win, giving PLU the 125th win.



Below: Both the Lutes and the Loggers shake hands after the game.

PHOTO BY AUSTIN HILLIKER

PHOTO BY AUSTIN HILLIKER



# Fitness facilities are finding their way to freshness

**DAVID MAIR**  
Staff Writer

Athletic and exercise facilities are in the midst of being made anew across campus so students may live a healthier lifestyle at college.

With Pacific Lutheran University celebrating its 125th anniversary, many of the buildings on campus are starting to show its age, specifically the athletic facilities.

Whether it is sports fields for teams trying to perform at their best or students wanting to stay in shape, facilities are in need of an update.

A lack of funding is

the main factor keeping the buildings from being updated, Athletic Director Laurie Turner said. The majority of facility projects are funded by donors and fundraisers.

Since money is a large barrier against bigger and brighter facilities, the key component is lots of "mini master plans" explained Turner.

"We have a plan," Turner said. "It's a laundry list and as money comes in, we'll tackle each plan."

Over the past five years, many of these plans have been addressed, but there is still a lot of work to be done.

The pool re-opened in 2012 with renovations to

the roof after a snowstorm destroyed it. During 2011, the track was resurfaced with synthetic surface. In 2011, the six tennis courts were repainted and resurfaced. East Field, the synthetic all purpose field, was constructed in August of 2012.

But athletic areas are not the only projects on the list. A lot of time has been invested in planning for a new Names Fitness Center, said Turner.

"Maybe 30 years ago [fitness] wouldn't be as important, but now there's a greater focus on exercise and health," Turner said. "We're working to accommodate students being both responsible and

responsive to students."

Though a number of facilities have been improved, there are still more "master plans" ready to be tackled. PLU is continually "looking to meet the needs of students," Turner said.

Names Fitness Center could possibly get a makeover soon, in addition to adding bathrooms adjacent to the new turf field. Olson Gym is also in the running for the installation of a new television screen in the lobby of the building.

While money is the main wall to climb in this whole process, Turner said her goal is to help "create an active environment, here on campus."



**ABOVE:** East field was finished August 2012. The field is used by numerous sports.  
**LEFT:** The PLU pool was renovated September 2012. Roof repairs were the main concern during the project.

# No name distinction for athletics



All athletic teams will go by the common name of "Lutes."

**Stephanie Compton**  
Guest Writer

There is no distinction between men's and women's athletics at PLU and it doesn't look like that is going to change.

The lack of distinction between men's and women's teams can also be found at Pacific Lutheran University. Women's athletic teams at PLU are discouraged from calling themselves the "Lady Lutes" or "Lady Knights" and are encouraged to maintain the collective Lutes logo and identification.

While some teams at PLU unofficially call themselves the Lady Lutes, there is no official Lady Lute logo or title. The description

of the Lute's athletic logo from the PLU branding guide is this: "The PLU athletic brand was redesigned in the summer of 2011. It is now the main brand for the Department of Athletics and has replaced the Lute oval-and-script 'Lute' word mark."

However, other schools have not had the same experience as PLU.

At the beginning of this year the University of Tennessee announced that they will no longer be using the Lady Vols logo to distinguish its women's athletic teams.

The athletic teams will now be using the "power T" that has been used primarily by the men's teams since it was created. The only sport allowed to retain the Lady Vols logo will be the women's basketball team, due to the legacy of former head coach Pat Summitt.

The women's basketball team, under the direction of head coach Pat Summitt, won eight titles during her 38-year reign. In that time, the Lady Vols logo became a brand for the women's basketball team and for Pat Summitt.

This logo has come to represent the strength of the women's athletic teams at Tennessee and their incredible success.

The Lady Vols logo as we know of it today was first used in 1976,

after the passing of Title IX.

Coach Pat Summitt created the logo to make sure the University of Tennessee was reminded of their responsibility to uphold Title IX for their women's teams. All women's teams implemented the logo shortly after Summitt, but it was the women's basketball team that made it an icon.

The women's basketball team may have solidified the logo in history, but it wasn't only used by them. The Lady Vols logo has meaning for every women's team at the University of Tennessee and many are angry about its departure.

Former University of Tennessee swimmer Tricia Weaner started a petition to bring back the campus wide use of the Lady Vols logo for all women's athletic teams. It now has more than 5,000 signatures.

The implication of the loss of the logo for the women's teams to some means the loss of an identity. The logo allows the women's teams to stand out and be proud that they are female athletes and that they are among the best at the University of Tennessee.

To take their logo away and integrate them with the men's teams takes away from the legacy that the logo has been building for decades.



12510 PACIFIC AVENUE SOUTH • TACOMA, WA 98444 • 253 537 5150

- FULL MENU
- VARIETY OF AMAZING PIZZAS
- KARAOKE FRIDAY & SATURDAY NIGHTS
- 10 TVs FOR ALL SPORTING EVENTS
- POOLS TABLES

A GREAT LOCAL SPORTS BAR

Must be 21 with valid ID

# A different art, sports writing

**Steven McGrain**  
Sports Writer

The best artistic demonstration is sports writing. The opportunity to express the progression of a game is an art that some consider lost.

Athletic events can be covered in a variety of ways, whether it is through television, radio, social media or print.

Print is a lost aspect of sports media. It's not a popular outlet anymore because the game had been over for hours before the article is published.

But why shouldn't print be the most popular form of capturing moments of a game or press conference? Television gives you a visual, radio is convenient when a television is not accessible and social media is the quickest form, though not necessarily the most

trustworthy. With print, the writer can fully digest the game and pin point a certain progression that was a deciding factor.

When a team wins a championship, they certainly do not hold up a cell phone to show a tweet saying, "the Patriots have won the Super Bowl." They hold up a newspaper with a massive caption and a picture. Yes, call me old fashioned, but if none of those players could screen shot these moments and frame them, the phone would become idle and the picture would be useless.

The writers that inspire me are ones who can explain why an offensive lineman has inside out responsibilities on a pass play, in a way that a novice sports fan can understand. Instead, many sports media writers rattle off "spider 2-y-banana," a football play only understood by the football savvy.

To me, this can turn people away as opposed to grab their attention.

I aspire to become a sports writer so that a greater audience can appreciate an athletic event. To be able to actually reflect on why a certain play happened, so that if a player made an exceptional play, his mom can hang up it on the refrigerator. To have inside information on a team making their way through March Madness and telling the story to the country has been a dream of mine since the fifth grade.

No matter what profession someone is aspiring to be, we all have an opportunity to create our own masterpiece within this career choice. Mine, hopefully, will be placed on a high school senior's refrigerator because he made the game winning play and that hard copy can last a lifetime.

## DRIVE TO 125

1

2

5

WINS

#golutes

PHOTO COURTESY OF GOLUTES.COM