



SAGA

1
9
3
5









*The
Saga
1935*

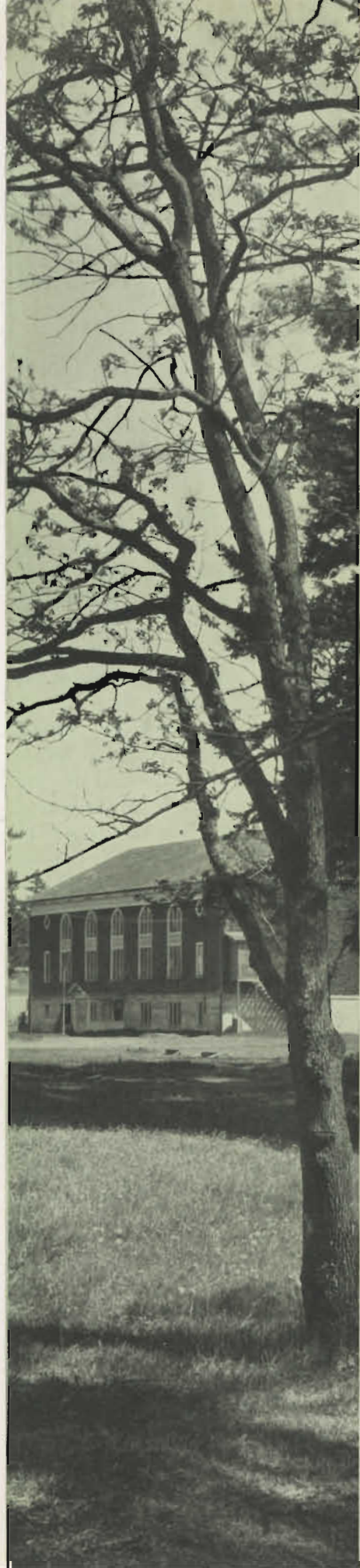
PUBLISHED BY THE
ASSOCIATED STUDENTS

Pacific Lutheran College
PARKLAND, WASHINGTON

Foreword

It is our earnest hope that the following pages may truthfully perpetuate the life at Pacific Lutheran College, and that we may catch, as it were, on these pages a true glimpse of the happiness of our faith, of the appreciation of our privileges, and of the sincerity of our purpose. May we here immortalize these priceless days of glowing youth, of exuberant fellowship, of stern teachings, of strengthened faith, and of moulded Christianity.





Dedication

We, the students of Pacific Lutheran College, humbly offer this, our Saga, in dedication to those giants of faith who, through endless trials and material blockades, have fostered this College, have watched it with fearful hope and infinite trust, have dedicated it to Christian service, have consecrated their own lives to the furthering of that service, and who, by sheer force of determined love, have brought it down through forty triumphant years of Christian education.



Appreciation

The staff members wish to thank the following for their cooperation in publishing the 1935 Saga: the administration, the students, and the business friends; Prof. N. J. Hong and Mr. Ludvig Larson, advisers; Mr. J. Frank Miller, of the Johnson-Cox Company; Mr. Leonard Brown, of the Tacoma Engraving Company; Mr. Ted McIntyre, of the Associated Photographic Service; and Mr. and Mrs. F. H. Krug, of the Hartsook Studio.

Contents

ADMINISTRATION

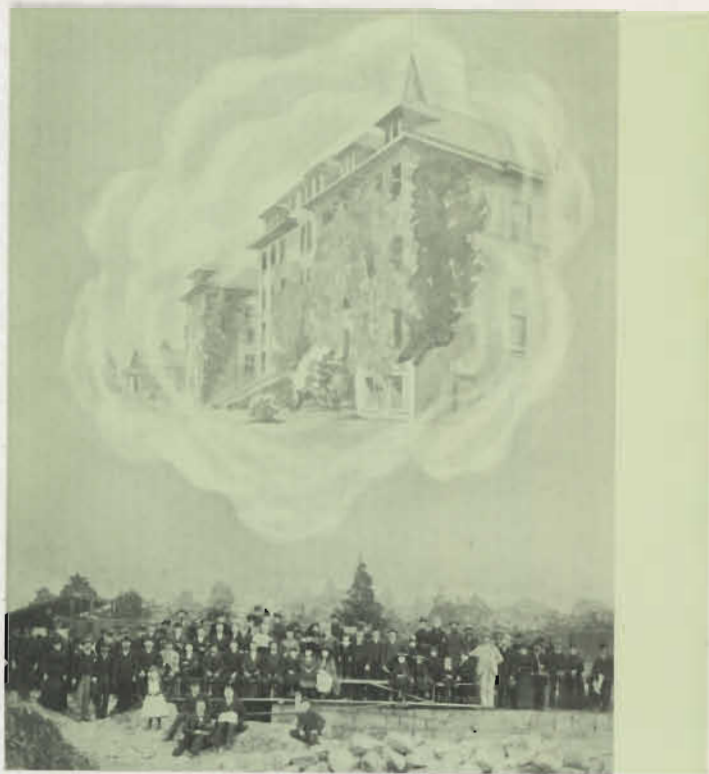
CLASSES

ACTIVITIES

ATHLETICS

FEATURES





Believing that their vision of a strong Lutheran church on the western frontier would be best realized by establishing a school as a rallying point, the early Lutheran pioneers founded Pacific Lutheran College. After thorough consideration, they decided upon Parkland as the most suitable location, endowed as it was with beautiful scenery and healthful surroundings. Amid lofty fir trees, freshened by Clover Creek, and facing the great snow-clad dome of Mt. Rainier, the campus is an inspiration to anyone who visits it.

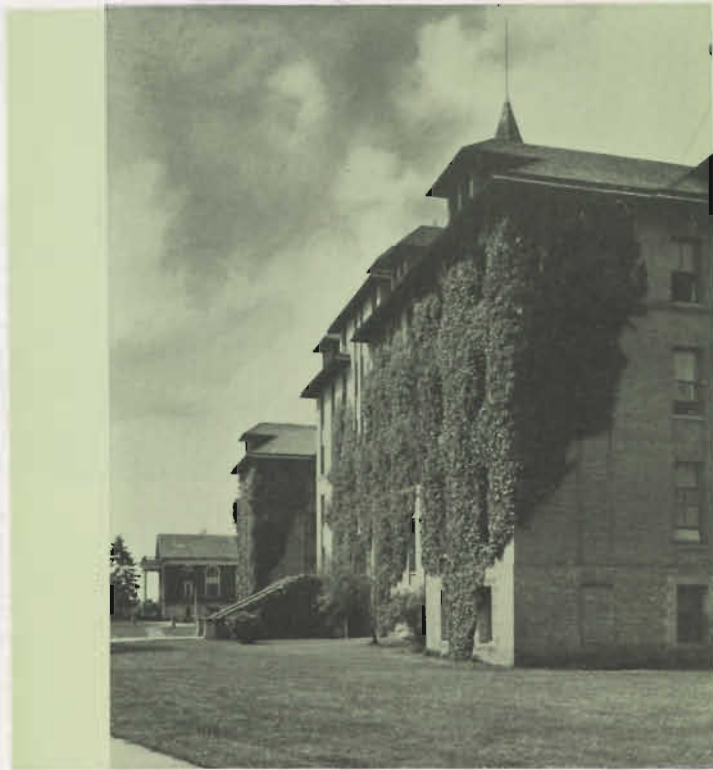
The Dream

The Reverend Bjug A. Harstad had been sent by the Lutheran pastoral conference, assembled in Decorah, Iowa, October 1890, to assist in starting the work in a proper manner. On October 4, 1891, the cornerstone was laid. Three years later, October 14, 1894, the building was dedicated. On that beautiful day, as an assembly of about two thousand persons, gathered from all over the Pacific Coast, joined in singing "A Mighty Fortress Is Our God," led by Dr. Carlo A. Sperati, they envisioned a wonderful Christian institution—a school that should cover all fields of educational endeavor. There was a definite ideal of thoroughness, profundity, and genuineness, and they knew that the Lord would bless their efforts.

There prevailed a definite ideal of Christian generosity in those pious hearts. Despite financial hardships, they gave liberally in order to build an institution which would make noble men and women out of the children to come. Besides the support they might count on from friends interested in the enterprise, these men of vision saw that undeveloped Western resources might rightfully prove helpful.

These founders of our beloved school thought of life as a great art; they lived for what they could put into it. Each leader through the history of the school has faced great difficulties, due largely to lack of money. Yet these obstacles did not depress these men of action, but rather strengthened their determination.

As they looked back on the years spent in getting the institution started, they recognized in it all the hand of the Lord, who had richly aided them in making the beginning, and trusted in His help and guidance for the future.



The Reality

Forty years in the wilderness, facing many depressing conditions, have passed since the laying of that cornerstone. Yet, Pacific Lutheran College stands today, as the home of many Christian soldiers treading the path that leads to a happy eternity. Yes, God has answered the fervent prayers of those courageous men who strove to establish this institution of Christian learning in a world of discord and turmoil. He has richly blessed their cause; and we who reap the benefits thank our God most sincerely.

Pacific Lutheran College has an enrollment of nearly three hundred young men and women, who are being trained mentally, physically, and spiritually. Its music department is famous for the "Choir of the West," whose sacred melodies have won the hearts of many. The athletic department boasts Junior College league championship. The Normal Department produces teachers of a high order, men and women who are trained leaders, and intelligent and consecrated workers. The school constantly endeavors to promote the highest intellectual development of its students, to give them a sound religious training, and to surround them with such character-building influences as best will fit them for a useful life in home, church and state.

The faculty includes men and women of broad training and successful experiences who are loyal to the school and devoted to their work. Each one of them takes a personal interest in the individual students, who come with an intense desire to learn and improve themselves.

The natural beauty of the campus has been enhanced by the efforts of man and presents much of scenic value.

And so Pacific Lutheran College, calmly and traditionally courageous, faces the future. President O. A. Tingelstad, whom the college loves, is an excellent executive, who, with the generous help of the Board of Trustees, is piloting our ship as it soars into the years to come.

We ask our Heavenly Father, as did those simple pioneers, to bless us richly, that we may retain our institution of Christian learning, where we face the problems of our civilization with confidence and determination.



SAGA STAFF

Row 1: E. Benson, Swanson, Daniels, Holtcamp, Gillilan, Madsen, J. Benson, Jackson. Row 2: Syverson, Johnson, Odell, Norby, Eklund, Bergstrom, Armour, Merz, Torrison. Row 3: Flint, Friis, A. Anderson, Tayet, E. Anderson, Pflueger, Knutzen.

Saga

EDITORIAL STAFF

Editor	- - - - -	Thelma Daniels
Associate Editors	- - - - -	Helen Holtcamp, James Gillilan
Activities	- - - - -	Evelyn Eklund, Evelyn Syverson, Francis Archbold, Bertrum Myhre
Classes	- - - - -	Rachel Flint, Ellen Bergstrom, Ida Merz, Harry Gribbohm
Athletics	- - - - -	Eldon Anderson, Judith Benson
School Life	- - - - -	Valborg Norby, Gerhardt Pflueger
Artists	- - - - -	Arnold Anderson, Roberta Torrison
Personals	- - - - -	Louise Jackson
Typists	- - - - -	Eline Benson, Elizabeth Friis
Adviser	- - - - -	Professor N. J. Hong

BUSINESS STAFF

Business Manager	- - - - -	Roland Swanson
Circulation Manager	- - - - -	William Pflueger
Circulation Solicitors	- - - - -	Alda Johnson, Irene Odell, Ione Madsen
Advertising Manager	- - - - -	Clifford Mesford
Advertising Solicitors	- - - - -	Jean Armour, Vern Knutzen, Erling Larson
Accountant	- - - - -	Frithjof Tayet
Adviser	- - - - -	Mr. Ludvig Larson



Administration



The founders and builders of Pacific Lutheran College may be likened to a chosen people who under a Moses of their own entered the wilderness in search of a promised land. The toil of this people, together with the labors of others, has been converting the wilderness itself into a land of most glorious promise.

Perhaps this is still more true in a spiritual sense. Small groups, in comparative isolation, have set up their own tabernacles and schools, incapable of independent survival; and the wilderness has become a graveyard of many hopes. Yet the spirit of their common Christianity survives; and we, their heirs, feel that we may say that the Lord has guided by night and by day.

As scattered groups are gradually becoming one, may we not, after forty years in the wilderness, cheerfully and courageously face a promised land together?

O. A. TINGELSTAD.



The past fascinates us all. Its significance lies in the inspiration and courage it gives us. The youth of today need to take cognizance of this past, need to understand the present, and need to plan for the future.

In this new day you will be expected to bring order out of the present turmoil; to bring hope and confidence in place of social insecurity; to re-establish faith in political principles, now viewed with general distrust; to develop a harmonious understanding of international problems instead of dissension and jealousy; to replace the worship of material wealth with a love for the beautiful, the good, the pure; to awaken a deep concern for Christianity and Christian living in place of religious indifference.

To do her part toward realizing such ideals, Pacific Lutheran College will dedicate her future.

PHILIP E. HAUGE.



FACULTY

Row 1: E. A. Larson, Kreidler, Johnson, Bondy, Highby.
 Row 2: Nelsson, Bardon, Hauge, Hong, Edwards. Pictures not included: Beck, Dapper, Elvestrom.

Faculty

P. J. BARDON, M. A.
 Social Science

ALVAR J. BECK, M. A.
 History, Economics
 (on leave)

MRS. ELIZABETH BONDY, M. A.
 French, German

MRS. ADA DAPPER, B. A.
 Physical Education for Women

JOSEPH O. EDWARDS, B. Mus.
 Director of Music

VICTOR A. ELVESTROM, A. B.
 Field Agent

PHILIP E. HAUGE, M. A.
 Dean, Registrar
 Education, Psychology

PAUL R. HIGHBY, M. A.
 Biological Science

N. J. HONG, A. B.
 Principal High School Division
 English

VIVIAN JOHNSON, M. A.
 Normal Supervisor
 Education

MRS. LORA B. KREIDLER
 Dean of Women
 Art

E. ARTHUR LARSON, A. B., C. T.
 Swedish



FACULTY

Row 1: Pflueger, Taylor, Olson, Reneau, Reid.

Row 2: Xavier, Stuen, O. A. Tingelstad, Ramstad, E. Tingelstad. Pictures not included: L. Larson, Preus.

Faculty

LUDVIC LARSON
Business Manager

F. E. THEODORE NELSSON, B. A.
Dean of Men

CLIFFORD O. OLSON, A. B.
Director of Physical Education

J. P. PFLUEGER, A. B., B. S., C. T.
Christianity, Philosophy

PAUL A. PREUS, A. B.
Field Agent
(on leave)

A. W. RAMSTAD, B. A., C. T.
Chemistry, Mathematics

W. D. KEITH REID, B. A.
Commerce

GEO RENEAU, M. Ph.
History

O. J. STUEN, M. A.
Mathematics, Norse

MRS. LOUISE S. TAYLOR, B. A.
Assistant Registrar
English, Home Relations

E. TINGELSTAD, M. A.
Editor Pacific Lutheran Herald
Latin, History

O. A. TINGELSTAD, C. T., Ph. D.
President

J. U. XAVIER, M. A., C. T.
Librarian, Latin



BOARD OF CONTROL

Row 1: Van Leuven, Daniels, Nash, Myhre. Row 2: Mesford, Anderson, Irwin, Raudebaugh, Heggem, Gribbohm.

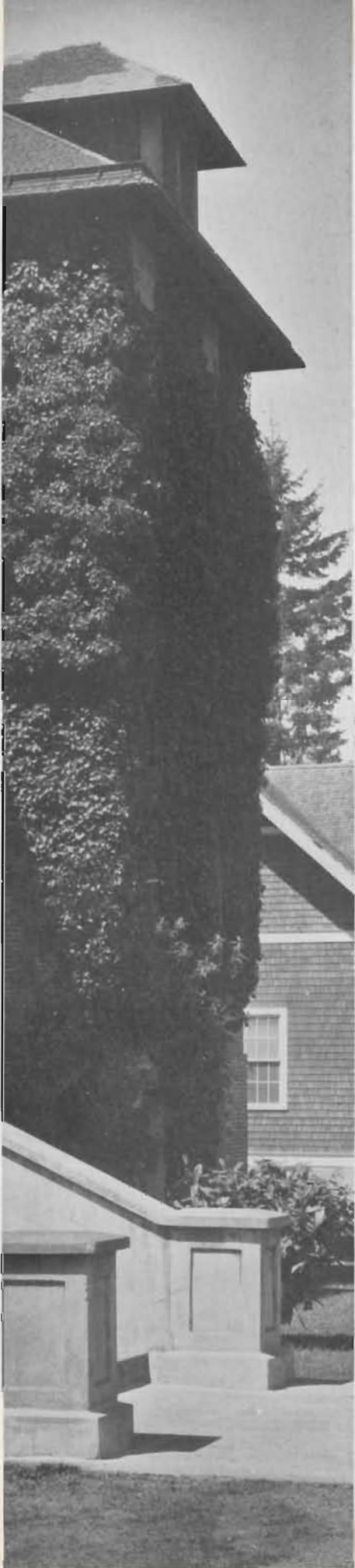
The Board of Control has this year carried on its duties of student self-government and the consideration of things pertinent to student interest and welfare. One of the Board's major activities this year was the consideration of a 1934-35 Saga. Last year it had been decided to adopt the policy of publishing the Saga only once every two years. The Board, however, decided that, since the Saga occupies such an important place in student life, a 1934-35 Saga should be published. A vote was asked of the Student Body, and such unanimous support was indicated that preparations for the publication were immediately undertaken.

Board of Control

Acting for the Associated Students, the Board of Control sent Milton Nesvig and Roland Swanson to Seattle on December 1, to represent the Pacific Lutheran College students at the Pacific Northwest Region of the Lutheran Student Association of America. Also, on the first of March, they sent William Pflueger, elected delegate, to the National Convention of the Lutheran Students' Union, held at St. Olaf College, Northfield, Minnesota.

Again this year, the Board of Control sponsored the trip to Mount Tacoma, which was enjoyed by fifty or more of the students. The Board gave its support to the Saga when it sponsored the Saga Carnival, the annual fun fiesta undertaken for the purpose of raising funds for the Saga. So well has the advertising department of the Board of Control done its work, that Governor Clarence D. Martin was here with a group of dignitaries from Olympia to crown the May queen in the annual May Day festivities on the campus.

The Board is made up of representative students from every department of the College and High School. Its officers are those of the Associated Students. Those who have so successfully guided the work of the students this year are: president, John Van Leuven; vice-president, Thelma Daniels; secretary, Mary Nash; treasurer, Bertrum Myhre; senior representative, Evelyn Irwin; sophomore representative, Eleanor Raudebaugh; freshman representative, Mabel Heggem; High School representative, Harry Gribbohm; commissioner of advertising, Clifford Mesford; commissioner of athletics, Eldon Anderson.



Classes



COLLEGE GRADUATES
Swanson, Rudd, Jackson, Roti.

College Graduates

Drawing its members from both the freshman and sophomore classes of the previous year, the graduating class of 1935 again proved that second-year Liberal Arts students and third-year Normal students could work together in that spirit of Christian fellowship which typifies Pacific Lutheran College. Organizing in the fall of 1934, they divided offices between the two groups. Officers elected were: Roland Swanson, president; Sheldon Moe, vice-president; Louise Jackson, secretary; and Gene Jack, treasurer. During the second semester the graduates chose Lila Rudd, vice-president, and Lloyd Roti, treasurer, to fill the vacancies left by the withdrawal of those officers. Professor Philip Hauge was class adviser.

On May 20, members of the class held a yacht party on the cruiser "Outcalt." Arrangements for the cruise were made by Arnold Anderson, Louise Jackson, and Eldon Anderson.

For the class play, graduates chose "Tilly of Bloomsbury" by Ian Hay. This comedy-drama had an English setting, the plot centering about Tilly, daughter of the middle-class Welwyns, and Richard, only son of Lord and Lady Mainwaring. Thelma Daniels and Roland Swanson took the leading roles.

The aristocratic Mainwarings were portrayed by Rhoda Hokenstad as the haughty Lady Marian; Lloyd Roti as Abel Mainwaring, M. P., and Jane Williams as Sylvia, the daughter. Milton Nesvig was Milroy, the butler; Evelyn Irwin took the role of Constance Damer, a family friend; and Bertrum Myhre was the curate, Rev. Rylands.

John Van Leuven had the part of Lucius Welwyn, Tilly's father; Lila Rudd was Mrs. Welwyn, who had difficulty with her "h's"; Louise Jackson was Amelia, the younger sister; Arnold Anderson, Percy, her boisterous brother, and Rachel Flint was Grandma Banks. William Pflueger and Eldon Anderson were Metha Ram and Pumpherston, battling "paying guests" in the Welwyn home, and Harry Gribbohm took the role of Stillbottle, sheriff's officer-turned-butler.

The play offered a fine opportunity for characterization, and under the skillful and unerring direction of Mrs. J. O. Edwards was a marked success.

Class night, June 1, was the last contribution of the group to the school life of Pacific Lutheran College, and a fitting close to a successful year for the class of 1935.



HIGH SCHOOL GRADUATES
Gribbohm, Preus, Dahl, Fenney.

High School Graduates

With Harry Gribbohm as president; Norma Preus, vice-president; Elizabeth Dahl, secretary; and Melba Fenney as treasurer, the High School graduates are completing a most successful year. It has been many years since there has been such an active class. Entering into all activities, the seniors were known as willing workers, and their aid was greatly appreciated.

Organizing at the beginning of the term with the above officers, the class chose Mr. Keith Reid as their adviser. Just before Christmas vacation, they presented a Chapel program, regarded as one of the best given during the year. The senior dinner-party, held in February, was the first of its kind attempted in the High School division. The great success it met assures repetition by succeeding classes. The booth at the Saga Carnival was known as "Ma's Kitchen," and many remember the delicious coffee and doughnuts served there.

The seniors showed musical ability, three having membership in the College Choir, and two in the Band and the Orchestra. The "Mooring Mast" claimed three members of the class, while two were on the Saga staff. One senior received a supporting role in the graduating class play. Athletics were very popular among them, four being members of the High School basketball team, and one young lady gaining the distinction of being chosen for the girls' all-star basketball team. The whole class participated in the various organizations, and several were office-holders.

"We have crossed the foothills, and the mountains lie beyond" was chosen as the class motto. Applying this principle to their endeavors, the seniors discovered that it was not for them to rest upon their laurels but to strive for greater perfection. It has been their hope that their advancement has been an example to the High School and even to the College. Guided by the Christian standards set by their teachers, they have seen the value of moral and mental cleanliness. In their studies, they have endeavored to maintain high averages, realizing that the industrious habits acquired now will prove invaluable later. Christian education has given them the courage to face their problems, knowing that God is with them and will lift them over the deepest ruts. Though their paths lead in different directions, no senior will forget the Christian help received at Pacific Lutheran College. "We have crossed the foothills; the mountains lie beyond."

**ARNOLD T. ANDERSON**

Tacoma, Washington. Liberal Arts. Choir; Class Play; Day Boys, Pres.; Drama Club, Pres. and Group Leader; German Club; Male Quartette; Saga.

BERNARD ELDON ANDERSON

Pendleton, Oregon. Liberal Arts. A. S. B., Comm. of Athletics; Basketball; Choir, Pres.; Class Play; Dorm Union, Pres.; Drama Club, Group Leader; German Club; Mission Society, Pres. and Treas.; Mooring Mast; Operetta; Orchestra; Saga; Swimming Club.

**ALICE LORETTA BARNUM**

Morton, Washington. Normal. Basketball; Drama Club; Ellensburg Normal; L. D. R.; Pep Club; Volleyball; W. A. A.; Washington State College.

MARGARET BODRERO

Sumner, Washington. Normal. L. D. R.; Mission Society; Pep Club; W. A. A.

**VIRGINIA ANN BOEN**

Tacoma, Washington. Normal. D. R. G., Pres.; Drama Club, Sec.; Golf Champion; May Festival; W. A. A.

EUGENE BURGOYNE

Tacoma, Washington. Liberal Arts. French Club, Sec.; Golf Team; Lettermen's Club; Orchestra; Tennis Team.

**NANCY L. BURNETT**

Tacoma, Washington. Normal. D. R. G.; W. A. A.

SYLVIA P. COLLIER

Rayallup, Washington. Normal. Bellingham Normal; D. R. G.; Drama Club; German Club.

**CARL E. COLTOM**

Parkland, Washington. Normal. Baseball; Basketball; Day Boys; Drama Club; Football; Lettermen's Club; Mission Society.

THELMA G. DANIELS

Parkland, Washington. Liberal Arts. A. S. B., Vice-Pres.; Choir; Class Play; Debate; D. R. G.; Drama Club, Group Leader and Vice-Pres.; French Club, Sec.; German Club; May Queen; Mooring Mast; Saga, Editor; W. A. A.

**HAROLD M. DEMPSTER**

Seattle, Washington. Liberal Arts. Dorm Union, Treas.; Mission Society.

OSTEN ANDREAS ELIASON

Seattle, Washington. Liberal Arts. Choir; Dorm Union; Football; Golf Club; Male Quartette; Mission Society; Operetta.

**RACHEL FLINT**

Tacoma, Washington. Normal. A. S. B., Sec.; Class Play; D. R. G., Sec.; Drama Club, Group Leader; French Club, Sec.-Treas.; Mooring Mast; Saga; W. A. A.

AMY ELEANOR GILBERT

Tacoma, Washington. Liberal Arts. Choir; D. R. G.; Vice-Pres.; French Club; German Club; May Festival.

**JOSEPH GERHARD HANSON**

North Dakota. Liberal Arts. Band; Basketball; Lutheran Brotherhood; Mission Society; Orchestra; Trumpet Quartette.

MARVIN HANSON

Parkland, Washington. Liberal Arts. Dorm Union; Football; Lettermen's Club; Mooring Mast, Bus. Mgr.

**SHOIN HASEGAWA**

Japan. Liberal Arts. Peace Delegate from Japan.

RHODA MAE HOKENSTAD

Snohomish, Washington. Liberal Arts. Choir; Drama Club; French Club; Freshman Class, Treas.; L. D. R., Pres.; Mission Society; Pep Club, Sec.-Treas.; Saga, Ass't. Editor; Swimming Club, Pres.; W. A. A., Pres.; Yell Leader.

**LEWIS G. HUNTER**

Tacoma, Washington. Normal. Band; Orchestra; Music Dept., Assistant.

KAREN HVIDDING

Canby, Oregon. Liberal Arts. French Club; Pep Club; L. D. R.; Mission Society.

PAUL HVIDDING

Canby, Oregon. Liberal Arts. Football; Mission Society, Treas.; Mooring Mast; Saga.

EVELYN IRWIN

Parkland, Washington. Normal. A. S. B., Senior Rep.; Class Play; D. R. G., Sec. and Pres.; Drama Club, Vice-Pres. and Group Leader; L. D. R.; Mooring Mast; Saga; Swimming Club.

LOUISE ANNETTE JACKSON

Tacoma, Washington. Normal. Class Play; D. R. G.; Drama Club, Vice-Pres.; L. D. R.; Mission Society; Mooring Mast, Circulation Manager; Pep Club, Pres.; Saga; Senior Class, Sec.; Swimming Club; Volleyball; W. A. A.

ESTHER JAHR

Baker, Oregon. Normal. D. R. G.; Drama Club; German Club; L. D. R., Treas.; Mission Society; Pep Club.

HAROLD CLARENCE JOHANSEN

Lawrence, Washington. Liberal Arts. Dorm Union; German Club; Mission Society; Tennis.

ANNE JOHNSON

South Bend, Washington. Liberal Arts. D. R. G.; Drama Club; German Club; L. D. R.; Pep Club; W. A. A.

SENA LAURENA JOHNSON

Kent, Washington. Normal. L. D. R.; Mission Society; Mooring Mast; Pep Club; W. A. A.

VIRGINIA LEE MAHNCKE

Winlock, Washington. Normal. Basketball; D. R. G.; Drama Club; L. D. R., Pres.; Pep Club.

ANGELO J. MANOUSOS

Tacoma, Washington. Normal. University of Washington, B. A., M. A.; Tennis Team.

MARJORIE ELIZABETH MEADE

Tacoma, Washington. Normal. Basketball; Band; D. R. G.; L. D. R.; Orchestra; San Francisco State Teachers' College; Volleyball.

PORTIA ELLEN MILLER

Tacoma, Washington. Normal. College of Puget Sound; D. R. G.; Drama Club; May Festival.

ALVIN THOMAS MOE

Tacoma, Washington. Liberal Arts.

BERTRUM MYHRE

Tacoma, Washington. Liberal Arts. A. S. B., Treas. and Freshman Rep.; Choir; Class Play; Day Boys; Drama Club, Treas. and Pres.; Lettermen's Club; Mooring Mast, Bus. Mgr.; Saga; Tennis Team.

MARY PRISCILLA NASH

Friday Harbor, Washington. Normal. A. S. B., Sec. and Soph. Rep.; Choir; Class Play, Ass't. Director; Drama Club, Sec.; L. D. R.; Mission Society; Pep Club, Pres. and Vice-Pres.; Sophomore Class, Pres.; Volleyball; W. A. A.; Vice-Pres.; Yell Leader.

MILTON LUTHER NESVIC

Seattle, Washington. Liberal Arts. Choir; Class Play; Dorm Union, Vice-Pres.; Drama Club; Football; Mission Society; Mooring Mast, Associate Editor and Editor.

RUTH NEWBERG

Tacoma, Washington. Normal. D. R. G.; Drama Club; L. D. R.

ALICE NOLAN

Tacoma, Washington. Normal. Baseball; Basketball; D. R. G., Treas.; Golf; L. D. R.; Sophomore Class, Vice-Pres.; Volleyball; W. A. A.

HERBERT STORAASLI NORGAARD

Everett, Washington. Liberal Arts. Dorm Union; Drama Club; Lettermen's Club; Manager of Athletics; Mission Society, Vice-Pres.; Saga.

MARIE PEDERSEN

Tacoma, Washington. Normal. D. R. G.; Drama Club; L. D. R.

MARIAN PETERSON

Tacoma, Washington. Normal. D. R. G., Recording Sec.; Drama Club.





WILLIAM PFLUEGER

Parkland, Washington. Liberal Arts. Basketball; Class Play; Drama Club; Football; Mission Society; Saga, Circulation Manager.

PAUL K. PREUS

Parkland, Washington. Liberal Arts. A. S. B., Comm. of Athletics; Choir; French Club; German Club; Golf Team; Lettermen's Club; Mission Society; Mooring Mast, Sports Editor.



ROLF B. PREUS

Minneapolis, Minnesota. Liberal Arts. Dorm Union; German Club; Mission Society.

DILIE ELENORA QUALE

Milwaukie, Oregon. Normal. Band; Choir; D. R. G., Vice-Pres.; Drama Club; L. D. R.; Mission Society; Mooring Mast; Pep Club; W. A. A.



LLOYD ROTI

Tacoma, Washington. Liberal Arts. Class Play; Day Boys, Sec.-Treas.; Drama Club, Vice-Pres. and Treas.; French Club; Senior Class, Treas.

LILA RUDD

Portland, Oregon. Normal. Basketball; Class Play; D. R. G.; Drama Club, Group Leader; L. D. R., Sec.; Pep Club, Sec.-Treas.; Senior Class, Vice-Pres.; Sophomore Class, Sec.; Volleyball; W. A. A.



JUNET RUNBECK

Tacoma, Washington. Normal. D. R. G., Vice-Pres.; German Club; L. D. R.; W. A. A.

LYAL H. SANDERSON

Parkland, Washington. Normal. Baseball; Basketball; Day Boys; Football; Lettermen's Club; Mission Society.



SHIRLEY MARIE SAVAGE

Tacoma, Washington. Normal. Baseball; Basketball; D. R. G., Sec.; Drama Club; Golf; Hiking; L. D. R.; Volleyball; W. A. A.

ROLAND HILDING SWANSON

Seattle, Washington. Liberal Arts. Choir; Class Play; Debate; Drama Club; Dorm Union, Vice-Pres.; Freshman Class, Vice-Pres.; Mission Society, Pres.; Saga, Business and Circulation Manager; Senior Class, Pres.



ALICE GENEVIEVE SWINEHART

Tacoma, Washington. Normal. D. R. G.

IDA MAGDALENE THOMPSON

Parkland, Washington. Liberal Arts. Basketball; D. R. G.; Drama Club; L. D. R.; Mission Society; Swimming Club, Sec.; Volleyball.



JOHN VAN LEUVEN

Tacoma, Washington. Normal. A. S. B., Pres.; Class Play; Debate; Drama Club; Swimming Club; Yell Leader.

MARTHA JANE WILLIAMS

Tacoma, Washington. Normal. Choir; Class Play; D. R. G.; Drama Club; French Club; L. D. R.; Mooring Mast; Saga; W. A. A.

PICTURES NOT INCLUDED

SYDNEY GLASSO

Parkland, Washington. Normal. Baseball; Day Boys; Tennis Team.

HERBERT HOPP

Chehalis, Washington. Liberal Arts. Band; Day Boys; German Club; Mission Society.

LYELL C. KREIDLER

Parkland, Washington. Normal.

MABEL E. MATTISON

Tacoma, Washington. Normal.

OLAF L. ORDAL

Bellingham, Washington. Normal.

ORLANDO ASPER

Parkland, Washington. High School. Baseball; Basketball; Day Boys; Debate Club; High School, Sergeant-at-Arms; Trout Club.



VERNER BITTER

Tacoma, Washington. High School. Day Boys; Debate Society. Pres.; Drama Club; German Club; High School, Pres.; Trout Club.



ELIZABETH MARJORIE DAHL

Trail, Minnesota. High School. Basketball; Choir; Debate Club; D. R. G.; Drama Club; French Club, Vice-Pres.; German Club; L. D. R.; Mission Society; Senior Class, Sec.; Volleyball.

ORWOLL DAHL

Parkland, Washington. High School. Day Boys; Drama Club; Golf; Swimming Club; Trout Club.



MELBA FENNEY

Parkland, Washington. High School. Basketball, Honor Team; Debate Club; D. R. G.; Drama Club; French Club; L. D. R.; Mission Society; Mooring Mast; Senior Class, Treas.; Volleyball.

HARRY CRIBBOHM

Spokane, Washington. High School. A. S. B., High School Rep.; Band; Basketball; Choir; Class Play; Debate Club; Dorm Union; Drama Club; German Club; Mission Society; Mooring Mast; Orchestra; Saga; Senior Class, Pres.; Swimming Club; Trout Club.



VIRGINIA LOU HARRIS

Parkland, Washington. High School. D. R. G.; French Club; L. D. R.

PAUL LARSON

Parkland, Washington. High School. Basketball; Day Boys.



ALDA NASH

Portland, Oregon. High School. Pep Club.

LESLIE M. POTTER

Tacoma, Washington. High School. Day Boys; Debate Club.



NORMA PREUS

Parkland, Washington. High School. Choir; D. R. G.; German Club, Pres.; High School, Vice-Pres.; L. D. R.; Senior Class, Vice-Pres.; W. A. A.

LLOYD THOMPSON

Parkland, Washington. High School. Basketball; Choir; Day Boys; Debate Club, Vice-Pres.; Golf Team; Lettermen's Club; Swimming Club; Trout Club.

PICTURE NOT INCLUDED:

ERLING M. LARSON

Tacoma, Washington. High School. Band; Day Boys; Debate Club; Drama Club; Mooring Mast; Orchestra; Saga; Sax Quintette.



SOPHOMORES

Row 1: Manousos, Norby, O'Conner, Stenberg, Nagel, Froyen, Bergstrom, Kelsey. *Row 2:* Eklund, Olson, Madsen, Vogan, Hauge, Craft, Frye. *Row 3:* Tayet, Goff, Martin, Hutson, Dreibelbis, Johnson, Archbold, Brunner.

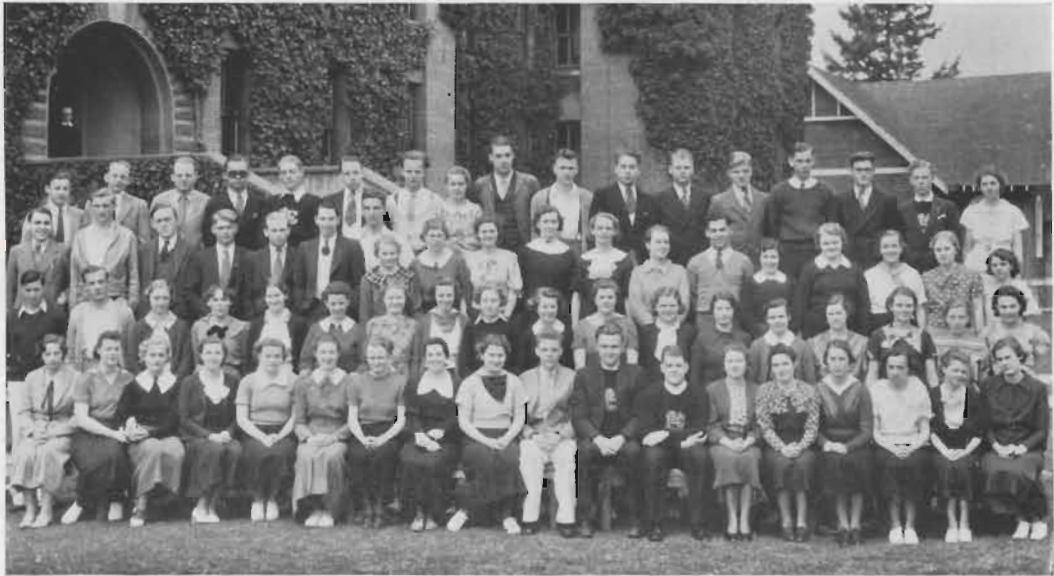
Continuing their participation in the various activities which they began as freshmen, members of the sophomore class have been outstanding in student life at Pacific Lutheran College. Because of their spirit of cooperation and good sportsmanship members of this class have been among the leaders. When the sophomores organized last fall, officers elected to head the class for the year were: Harold O'Conner, president; Eline Benson, vice-president; Valborg Norby, secretary; and Joanna Manousos, treasurer. Miss Vivian Johnson, Normal Department supervisor, was chosen class adviser.

Sophomores

Social events of the class included a "Sweethearts" party given in the College gym, January 18. With Joanna Manousos and Marie Johnson as hostesses, the affair proved to be very enjoyable. Under the general arrangement of Eline Benson, the class also presented a program for chapel exercises.

The Choir, the Orchestra, the Delta Rho Gamma, the Mission Society, and the Pep Club drew many of their officers and members from the sophomore class. Two members of the group were on the College Debate squad, while others took active part in the Drama Club as group leaders and officers. In athletics both the men and women made an excellent showing. Six sophomore women served on the council of the Women's Athletic Association as officers and managers, two of these receiving recognition by being placed on the honor team for their outstanding playing in basketball. Football men elected Harold O'Conner co-captain of the team for next season because of his teamwork.

The Christian environment has strongly influenced the sophomore class to develop stronger Christian character and a broader Christian view of life. It is the hope of the class, that as seniors they will continue to bring honor to the school by truly representing the spirit of Christ in a way that men may see their good works and glorify their Father which is in heaven.



COLLEGE FRESHMEN

Row 1: Walter, Kuhn, Hauke, Lilja, A. Johnson, Ness, Watts, Friis, Hagerup, Solie, Bolstad, Thompson, Torrison, Sells, Swanson, D. Anderson, Monson, Merz. Row 2: Tommervik, Armstrong, Tegland, Kitchion, Bergheim, Heggem, Myrah, Williams, Tobiason, Odell, Grass, Rorem, Hendrickson, Benson, Pearson, Hauge, Hugo, Barrett. Row 3: Phillips, Nilsen, Olson, J. Johnson, Haavik, Lipps, Frye, Dahle, Kohler, Torresdal, Holtcamp, K. Anderson, Withrow, Ford, Evans, Rust, Armour, McCullough, Kappahn. Row 4: Fisher, Janssen, Rogen, Arne, Monson, Grimstvedt, Steiro, Dale, Sulser, Larson, Hanbury, Lervick, Hendrickson, Strand, Stuen, Knutzen, Syverson.

Freshmen

A group of very lively and enthusiastic freshmen were admitted to Pacific Lutheran College on September 11, and, strange as it may seem, they remained equally enthusiastic throughout the school year. Almost immediately they were subjected by the upper classmen to a series of initiation tests when they entered the day and dorm students' organizations. When all had become fairly well acquainted, they held a meeting, at which the president of the student body presided, and class officers were elected. Joe Mitchell was chosen president; Chester Solie, vice-president; Hazel Hagerup, secretary; Emmett Thompson, treasurer. As the president did not return to school the second semester, Chester Solie, the vice-president took his place by a unanimous class vote, and Ralph Bolstad was elected vice-president.

Besides being prominent in scholarship, the freshman class members participated in various outside activities. The Choir counted as members several freshmen. The class was also well represented in the orchestra, the debate society, the Mooring Mast, and the Saga as well as in the Mission Society and L. D. R. In almost every field of activity one would find a freshman as a participant.

After much discussion, the class decided to break the monotony of the month of March by sponsoring a "kid" party which all class members attended. Cares and worries were tossed aside for an evening of enjoyment and fun. The degree of success was marked by the favorable comment of the students the following Monday.

As the school year closes, the members of the freshman class know they have spent a year in profitable learning, and that, locked in their hearts, they carry with them, to their vacation, precious and fond memories of times spent together.



HIGH SCHOOL

Row 1: Olson, E. Asper, O. Asper, Bitter, Gribbohm, Preus, F. Schlanbusch, Fenney, Dahl, Ramstad, Hutchison.
 Row 2: Tingelstad, B. Svare, Gottschalk, Boe, R. Svare, Stuen, Pflueger, Davis, C. Haugen, Schiermeyer, Xavier.
 Row 3: G. Larson, Lunde, P. Larson, Bondy, Hudson, E. Haugen, O. Schlanbusch, Thompson, McCormick, Haldane.

Nineteen hundred thirty-five is a year long to be remembered by the High School. For the first time in fourteen years, the student body organized. Verner Bitter was elected president. Assisting him were: Norma Preus, vice-president; Frederika Schlanbusch, secretary-treasurer; and Orlando Asper, sergeant-at-arms.

High School

Under the direction of these officers, the students have accomplished more this year than has been done at any other time since 1921. It is unusual to find a group so highly imbued with the cooperative spirit. Through their own efforts, they organized a basketball team, which had remarkable success. The Debate Club, though not very active, has promise. Their handwriting booth at the Saga Carnival, managed by High-School students, was one of the most popular attractions.

This year has been known as the "Struggle for Independence." For a number of years the High-School organizations had been so merged into those of the College that the presence of a secondary school here was seldom noted. The endeavor to secure recognition has met with growing success. Thus, through their representative on the Board of Control, the High-School students received appointments to several important committees, while other student organizations have cooperated with them to bring this about.

Yet their value in the College clubs is not to be overlooked. The Choir, the Band, and the Orchestra all claim High-School students as members, while many are enrolled in the Drama Club. The French and German Clubs are composed largely of High-School students. In athletics both boys and girls are prominent, being very active in golf and basketball. The girls' basketball and volleyball teams took second place in interclass competition.



Activities



MOORING MAST

Row 1: Dempster, Grimstvedt, Gillilan, Gribbohm, Myhre, Hagerup, Nesvig, Holtcamp, Jackson, Kohler, Mohn, Torrison. Row 2: Frye, Reid, Daniels, Preus, Fenney, E. Benson, Madsen, J. Benson, A. Johnson, Bergstrom, Withrow, K. Anderson, Craft. Row 3: J. Johnson, Hopp, Hvidding, Martin, Larsen, Friis, Norby, S. Johnson, Rorem, Machle, Tobiason, Heggem, Hauke, E. Anderson.

On the twenty-ninth day of October, 1924, Editor Palma Heimdahl and Business Manager George Cooper, both graduates of 1925, published the first Mooring Mast. This paper has since been carried on with such a marked degree of talent, industry, and sincerity that it now occupies a major position among the various campus activities.

Mooring Mast

So well have its various editors and staffs carried over the accepted ideals of modern journalism, and so well have they adopted and persevered in the ideals of the College itself, that the paper has not only won repeated awards and honors, but also won a place in the hearts of the ever-increasing circle of students and friends of Pacific Lutheran College. The National Newspaper Critical Service of the National Scholastic Press Association, in 1932, gave the Mooring Mast a national honor rating of "Second Class." In 1933, 1934, and 1935 the ratings were "First Class."

This year, the Mooring Mast has been edited by Milton Nesvig, who worked on the 1933-34 paper in the capacity of sports editor. The various assistants to the editor were: associate editors, Helen Holtcamp, Hazel Hagerup; features editor, Eleanor Hauke; sports editor, Paul Preus; editorial writer, Paul Hvidding; reporters, Eldon Anderson, Kathryn Anderson, Judith Benson, Ellen Bergstrom, Thelma Daniels, Elizabeth Friis, Harry Gribbohm, Mabel Heggem, Courtney King, Marian Kohler, Ione Madsen, Robert Martin, Russel Frye, Robert Monson, Valborg Norby, Roberta Torrison, Lenore Withrow, Herbert Hopp, Melba Fenney, Jasper Johnson, Ivan Larson, Mary Machle, Agnes Mohn, Norma Preus, Margaret Rorem; typists, Eline Benson, Edna Tobiason, Anne Johnson; faculty adviser, Mr. N. J. Hong.

Bertrum Myhre, as business manager of the 1934-35 Mooring Mast, was assisted by Clyde Grimstvedt, assistant business manager; Louise Jackson, circulation manager, Margaret Craft, circulation assistant; John Dreibelbis and James Gillilan, advertising managers; and faculty adviser, Mr. O. J. Stuen.



ORCHESTRA

Row 1: Syverson, Hauge, Thompson, Daniels, Hunter, Torresdal, Edwards.
 Row 2: Hanson, O'Conner, Bolstad, Anderson, Meade, Ford, Gribbohm.

Orchestra

Under the careful and able direction of Professor Joseph O. Edwards, the Orchestra has spent an enjoyable and profitable year. This organization is comparatively new, having been started only a few years ago. The Orchestra includes, as a part of its annual activity, performances at the school events, as well as at various civic functions. During the past year it has played for the State Garden Convention, for the Park-land Parent-Teacher Association in the presentation of the play "Babs," as well as for some of the chapel services. It also performed at the Football Banquet and the Homecoming festivities. It accompanied the Drama Club's presentation of the operetta "Cherry Blossom," and climaxed this year's activity by playing at the commencement exercises.

The instrumentation of the Orchestra included thirteen pieces; piano, two trumpets, tuba, mellaphone, two clarinets, trombone, and five violins.

The personnel of the Orchestra includes six musicians from Tacoma: Thelma Daniels, Eugene Burgoyne, Laura Hauge, Marjorie Mead, Lewis Hunter, and Evelyn Syverson; two from Everett, Washington: Ralph Bolstad, and Stanley Ford; and one each from Spokane, Auburn, Arlington, Washington, and Pendleton, Oregon: Harry Gribbohm, Harold O'Conner, Emmett Thompson, and Eldon Anderson, respectively.

The main objective of the Orchestra is the musical advancement and encouragement of the members, and the creation of musical interest among the students in general.

The Orchestra, though small, is well able to render musical selections of high order, and is receiving favorable comment among both the students themselves and the residents of the community. The organization is fast becoming part of the student life at Pacific Lutheran College; and, under its present efficient leadership, and with the continued co-operation and loyalty of its members, it can look forward to yet greater achievements. It is even now a group of well-trained musicians, and boasts of being represented in the Tacoma Philharmonic Orchestra by one of its members, Lewis Hunter.

Debate, one of the outstanding activities of the students of Pacific Lutheran College, has completed another very successful year. Notwithstanding the fact that this year's debates were again non-decision, the squad has worked diligently preparing very effective arguments. From a class of interested and alert-minded young men and women, Professor J. P. Pflueger, debate coach, chose a mixed group of eight students to comprise the Pacific Lutheran College debate squad. These young people studied the question: "Resolved: that the nations should agree to prevent the international shipment of arms and munitions."

Debate

In the first debate of the year, a mixed affirmative team consisting of John Van Leuven and Margaret Rorem was host to the men's negative team of the University of Washington, while Thelma Daniels and Ellen Bergstrom debated the men's affirmative team of the University. From Whitworth College, of Spokane, came a men's negative team which our men's affirmative, John Van Leuven and Delbert Breseman, encountered. In a meet with a women's team from Seattle Pacific, we saw our girls' affirmative team, Helen Holtcamp and Margaret Rorem, in action. This debate took place at Parkland.

Following this meet, Vern Knutzen and George Brockway journeyed to Seattle to uphold the negative side of the question against a strong affirmative team of Seattle Pacific. The University of Washington called a return debate, with Vern Knutzen and George Brockway again upholding the negative, and John Van Leuven and Delbert Breseman the affirmative.

The season for the men's teams closed with a debate with Mt. Vernon Junior College. As the final meet of the season, the women's team traveled to Aberdeen for a clash with the Grays Harbor Junior College teams, champions of the Northwest Junior Colleges.

Thus, once again Pacific Lutheran College feels she has been ably represented by her debate squad and is now awaiting the next year with its new question.

DEBATE

Row 1: Rorem, Pflueger, Knutzen, Bergstrom.
Row 2: Daniels, Van Leuven, Breseman, Brockway, Holtcamp.



French Club

To create interest in the literature, the customs, and arts of the French people, as well as to promote international friendship and understanding, the French Club, "Le Cercle Francais," holds its position among the language students of the campus.

"Le Cercle Francais" also unifies the attempts toward better understanding of the language, the pronunciation and diction, which make the study of the language far more profitable and interesting. In addition to this, its main purpose, the Club serves as a social group, holding its parties and gatherings for the pleasure of the student body as well as for its members.

Under the guidance of Mrs. Elizabeth Bondy, instructor, the club, during the Christmas holidays, visited the cadet ship, "Jeanne D' Arc," in Seattle. This visit provided a most interesting insight into the actual living habits of the French people. Several other entertaining and instructive gatherings have been held with outstanding guests as speakers. Mrs. Angele Messelin, instructor of French in the Lincoln High School, Tacoma, spoke on "French Customs"; and Mrs. J. P. Pflueger spoke on "The Mardi Gras in New Orleans." Both of these talks contained an abundance of local color and left a lasting impression on the minds of the audience.

Officers of "Le Cercle Francais" are elected at the end of each semester for the following term. Those holding office for the fall were: Joanna Manousos, president; Elizabeth Dahl, vice-president; Eleanor Hauke, secretary-treasurer. Those serving during the spring semester were: Ellen Bergstrom, president; Romola Rust, vice-president; Eula Mae Goff, secretary-treasurer.



FRENCH CLUB

Row 1: Bondy, Hauke, Goff, Bergstrom, Manousos, Dahl, Rust, Brunner, J. Williams, Flint. Row 2: Madsen, Nagel, Schlanbusch, Monson, Barrett, Dahle, Hutson, L. Williams, Daniels, Gilbert. Row 3: Friis, Hauge, Eklund, Kohler, Torresdal, Boe, Mattison, Odell, Hagerup, Johnson. Row 4: Gottschalk, Fenney, P. Hvidding, Roti, Tayet, K. Hvidding, Tobiason, Hendrickson, Rorem.



GERMAN CLUB

Row 1: Bondy, E. Anderson, Hauge, Hendrickson, Jahr, Preus, Davis, Machle, Brunner, Rorem, Runbeck.
 Row 2: Gribbohm, Hutchison, Fisher, Stuen, B. Svare, Dahl, Johnson, Gilbert, Martin.
 Row 3: Pflueger, A. Anderson, Hvidding, Hopp, R. Svare, Xavier, F. Bondy, Gillilan, Daniels, Sulser.

Corresponding to the French Club is the German Club, whose object is to combine the study of German literature with an understanding of the modes of life of the German people. Throughout the past year, this club has taken more active interest in the affairs of the college than ever before.

German Club

Under the competent and interested guidance of Mrs. Elizabeth Bondy, instructor in German, the German Club, which styles itself "Der Deutsche Verein," has sponsored motion pictures of travel and life in Germany, skating parties, and luncheons, each of which was attended enthusiastically by students and faculty.

Perhaps the most welcome speaker appearing before the German Club was Dr. F. W. Meisnest, of the University of Washington. Dr. Meisnest is a recognized authority on Germany and German movements. He is also the author of several textbooks, which have, from time to time, been in use in our German class-rooms here. Dr. Meisnest's subject this year was "The German School System." Dr. Warren Tomlinson, of the College of Puget Sound, spoke on "The Political Situation in the Saar Basin," and Mr. Klass, of the North German Lloyd and Hamburg American Steamship Line, presented a travelogue entitled, "We Meet in Germany."

In keeping with the Germanic atmosphere, a linden tree was planted in the background of the beautiful rock garden recently added to our campus. The ceremonies were conducted in German and English.

These varied activities, with several candy sales and skating parties, sponsored jointly by the French and German Clubs, have blended themselves into perhaps the most successful year in the history of "Der Deutsche Verein."

The officers who served during the fall semester were: Norma Preus, president; Virginia Davis, vice-president; Mary Machle, secretary-treasurer. During the spring semester they were: Mary Machle, president; Margaret Rorem, vice-president; and Gertrude Brunner, secretary-treasurer.



TROUT CLUB

Knutzen, Myhre, Haugen, Glasso, Schiermeyer, Highby, Johnson, Janssen.

Trout Club

Taking hold of an opportunity to utilize a hitherto undeveloped resource, namely Clover Creek, that runs through our campus, sportsmen of Pacific Lutheran College have this year organized a unique club, the Trout Club, so called because its purpose is to fish for trout, the gamest of all fish. This club has the following charter membership: Bertrum Myhre, Sydney Glasso, J. P. Pflueger, Harold Nilssen, Vern Knutzen, George Janssen, Ernest Haugen, Ernest Johnson, Lloyd Thompson, Paul Schiermeyer, Verner Bitter, P. R. Highby. Paul R. Highby is president of the club, George Janssen, vice-president, and Ernest Haugen, secretary. Members must qualify by being students at Pacific Lutheran College and having fishing licenses.

To show the nature of their sportsmanship, these anglers have a rule that in stream fishing no eggs shall be used for bait, thus giving the fish a fair chance. They fish by casting, using for bait *lumbrici terrestres* with a spinner, and flies. They also go trolling in Spanaway Lake. They angle for all kinds of fish, but only trout count in scoring.

Competition for honors in the club is keen. June 1 prizes were given to the catcher of the biggest fish (with witnesses), and to the member holding the largest score. Scores were based on the catch made one day in each week. This day is called Field Day and is selected at the beginning of each week by the fishermen. Sunday scores do not count, nor do scores without witnesses.

This club finds its most active season from the middle of April through May, and during September, October, and November. Its active project, besides that of fishing, is to deepen the stream so that larger fish may enter. This work, started on Campus Day, will take many years, but Mr. Highby is of the opinion that for the present there are as many fish here as in the mountain streams, and larger ones, too, so that the Trout Club will have many enjoyable seasons.



CHOIR

Row 1: M. Monson, Dahl, Johnson, Bergstrom, Watts, Prof. Edwards, Rust, Syverson, Williams, Tobiasson, Ramstad.
Row 2: Craft, Nash, Odell, Quale, Norby, Lilja, Rorem, Daniels, Machle, Benson. *Row 3:* Gribbom, E. Stuen, Holtcamp, Hokenstad, Martin, Gilbert, Nagel, N. Preus, Kitchion, Knutzen. *Row 4:* R. Monson, O'Conner, Grimsvedt, A. Anderson, Swanson, L. Thompson, Myhre, E. Thompson, Nesvig. *Row 5:* E. Anderson, Hinderlie, Schlanbusch, Eliason, P. Preus, Bolstad, J. Stuen, Reid.

Pacific Lutheran College can well be proud of the quality and the finished technique of its Choir. It is the outstanding musical organization of the College and deserves a great deal of credit for its accomplishments. Having made its debut in 1926, "The Choir of the West" is comparatively new. It was started under the direction of Professor J. O. Edwards, and, under his capable and inspiring instruction, has steadily improved during the past nine years. It presents a mixed group of fifty young men and women in sacred song whose a capella singing has won fame near and far.

Choir

On March 30, the Choir departed on its annual spring tour, made entirely by bus. It appeared in cities of Washington and Oregon, namely, Aberdeen, Chinook, Ilwaco, Astoria, Warren, Portland, Gresham, Oregon City, Silverton, Castle Rock, Longview, and Winlock. While in Portland, the "Choir of the West" made its initial radio appearance this year, giving a half hour broadcast over station KOIN.

Mrs. Lora Kreidler, dean of women, and Mr. C. O. Olson, acting manager, accompanied the group on this tenth annual tour.

Prior to the tour, the Choir gave several preliminary concerts in Seattle, Auburn, and Tacoma. It had entertained the student body at many chapel services, and had sung for various festivities at the College.

The Choir offers exceptional opportunities to young men and women interested in singing. Its inspiring music has not only reached many listeners with its spiritual message, but has developed in the singers a fine understanding and appreciation of sacred music.

This year's program included: The Spirit Also Helpeth Us, J. S. Bach; Christmas Cradle Song, George Schumann—Soprano Solo by Evelyn Syverson; Three Kings, Romeau—Soprano Solo by Ramola Rust; O Sacred Head, Christiansen; Glorification, Christiansen; Instrumental Group, J. O. Edwards; The Vision of Christ, Christiansen; Taenk Naar Engang, Norwegian Folk Song—Bass Solo by Roland Martin; 'Tis a Good Thing, J. O. Edwards; Chillun Come on Home, Noble Cain—Tenor Solo by Arnold Anderson; Lost in the Night, Christiansen—Soprano Solo by Pauline Watts; O Praise Ye, Tschairowsky; Beautiful Savior, Crusader's Hymn—Soprano Solo by Mildred Monson.



DRAMA CLUB

Row 1: Manousos, Hauge, Froyen, Armour, Torresdal, Kohler. Row 2: Hagerup, Irwin, Flint, J. Williams, Rorem, Madsen, Dale, Kuhn, Heggem, Lilja, Hauke, Grass, Hendrickson, E. Anderson, Votaw, Roti, Jackson, Myhre, Bergstrom, Ford, Anderson, Rudd, Daniels, Newberg, Sells, M. Monson. Row 3: A. Johnson, Ness, Bondy, Fisher, Armstrong, Watts, Myrah, L. Williams, Goff, E. Benson, Olson, M. Johnson, Hutson, Vogan, Brunner, Friis, Lunde, Larson, Swanson, D. Anderson, Odell, Nash, Craft, Evans, Torrison, Nagel. Row 4: A. Johnson, Gribbohm, J. Johnson, Haavik, Lipps, Hutchison, Xavier, Arne, Bolstad, Van Leuven, Stenberg, Norby, Hokenstad, Gottschalk, Fenney, Miller, Eklund, Davis, Stuen, I. Thompson, Withrow, K. Anderson, Holtcamp, Rust, Tobiason, Sverson. Row 5: Swanson, Grimstedt, Norgaard, Knutzen, Nesvig, R. Monson, Hvidding, Tayet, Burgoyne, Svinth, Martin, Frye, Gillilan, Larson, Olson, Hendrickson, Reid, W. Pflueger, G. Pflueger, Archbold, Svare, E. Thompson, Solie, Haugen.

Drama

That the work of the Drama Club has steadily improved this year is the opinion of Mr. Keith Reid, club adviser. "We have had better houses," he says, "and are better off financially; there has been more enthusiasm in our club work; and the production of our plays has steadily improved." The Drama Club began the year with the following officers: president,

Bertrum Myhre; vice-president, Louise Jackson; secretary, Virginia Boen; librarian, Eleanor Raudebaugh; treasurer, Lloyd Roti. During the spring semester the officers were: president, Arnold Anderson; vice-president, Lloyd Roti; secretary, Ellen Bergstrom; librarian, Judith Benson; treasurer, Stanley Ford. The group leaders for the first semester were: Arnold Anderson, Eleanor Raudebaugh, and Lila Rudd. Succeeding them in the spring were: Thelma Daniels, Ellen Bergstrom, and Eldon Anderson. Raymond Reid was the stage manager throughout the year.

The Drama Club continued the practice of giving three one-act plays monthly. The plays were judged and rated by three professors.

In order to provide opportunity for the many singers in the group, the club presented a Christmas cantata, "Good Will to Men," and in the spring an operetta, "Miss Cherry Blossom." Eleanor Raudebaugh and Arnold Anderson directed the cantata, while Mr. Keith Reid supervised the operetta, with Mrs. Louise S. Taylor, Mrs. A. H. Dapper, and Ellen Bergstrom assisting.

The following plays were presented: "Be a Little Cuckoo," "More Than a Million," "Ghost Hunters," "Sauce for the Gosling," "Elmer," "The Touchdown," "Prose Preferred," "The Ambitious Guest," "The Pampered Darling," "The Ghost of a Freshman," "The Orange Colored Necktie," "Now Don't Laugh," and "The Green Christmas."



PEP CLUB

Row 1: Hagerup, Hauke, Kuhn, Craft, Johnson, Kreidler, Jackson, Nash, K. Anderson, Torrison, Lilja.
 Row 2: Bodrero, Hauge, D. Anderson, Hugo, Quale, Holtcamp, Rust, Withrow, Odell, Tobiason, Hokenstad.
 Row 3: Ness, A. Johnson, Heggem, S. Johnson, Buxton, Hayward, Hvidding, Evans, Bue, Sells, Nash.

Membership in the Pep Club increased greatly over that of last year, and consequently the activities of this organization have influenced school life to a greater extent. Marshmallow roasts, poetry-gathering, and parties as well as meetings of a more serious nature have made up the program of the members of this club. Business meetings were held semi-monthly, often in the dining hall, followed by social hours. Each time four girls acted as hostesses.

Pep Club

The officers of the club for the fall semester were: president, Margaret Craft; vice-president, Mary Nash; secretary-treasurer, Helen Lilja; fire-chief, Eleanor Hauke. The officers during the spring semester were: president, Louise Jackson; vice-president, Kathryn Anderson; secretary-treasurer, Roberta Torrison; fire-chief, Pauline Kuhn.

The Pep Club fills the need for social life among girls living in the dormitory, and promotes cooperation and good feeling among them. During the past year it has sponsored a skating party and, together with Delta Rho Gamma, a Thanksgiving drive to help a needy family, and a Christmas party. Especially interested in the Pep Club are members of the Dormitory Auxiliary, made up of wives of pastors and of faculty members. They have helped to make the dormitory more cheerful and home-like for the girls who live at the school. Among other things they have furnished the fudge kitchen and radio room.

A bulletin board in the hall on the third floor was a new contribution of the Pep Club this year, which enables its members to communicate more easily. Here are posted bulletins, announcements, and bits of poetry the members wish to share with one another. Plants and flowers are often left on the staircase balustrade for all the members to enjoy.

By means of an inter-club council, dormitory girls and day girls have cooperated more fully than ever before. Sharing activities and friendly rivalries has enabled these clubs to make valuable contributions to school life.

Dormitory Union

The official organization of the residents of the men's dormitory, the Dormitory Union, has completed one of its most successful years in pro-

moting better fellowship among the dorm students, in providing general unity in the school affairs, and in sponsoring parties which will live in the memories of the participants for years to come. Through this organization, the men of the dormitory cooperate with the Dean of Men in maintaining discipline and in solving other problems of dormitory life.

This Union was organized in '26, when the men of the dormitory felt it necessary to have some type of self-governing body which would bring the students into closer contact with the administration of the school.

Notable among the achievements of the Dorm Union were the organizing of a fire department, the formulation of a set of rules and regulations for the men, and the establishment of a Dorm Court in which those breaking the dormitory rules were tried under regular court procedure.

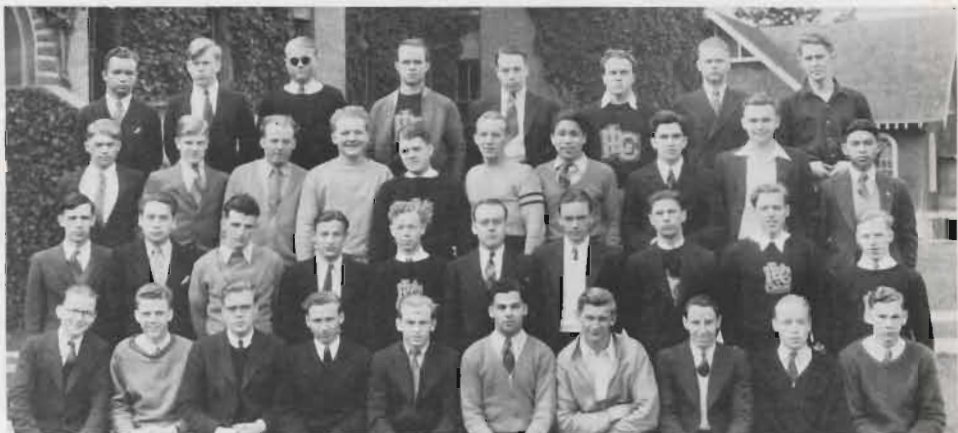
Two of the outstanding social features sponsored by the Union were the skating party held at King's Roller Rink, and the Dorm Rally, to which were invited the members of the Pep Club.

The bi-weekly meetings are held on a Tuesday evening, at which time the business of the organization is brought up and discussed. These meetings offer opportunities for the development of valuable leadership. The last meeting of each semester is devoted to the election of officers. The executives for the first semester were: Eldon Anderson, president; Roland Swanson, vice-president; Harold O'Conner, secretary-treasurer; Joseph Mitchell, sergeant-at-arms; Francis Archbold and Ernest Haugen, fire-chief and assistant. Officers for the second semester were: Clifford Mesford, president; Rolf Preus, vice-president; Arthur Haavik, secretary-treasurer; Harold Nilsen, sergeant-at-arms; Chester Solie and Clifford Haugen, fire-chief and assistant.

To Mr. Theodore Nelsson, Dean of Men, much credit is due for his splendid cooperation with the men of the dormitory in making life at the college enjoyable.

DORMITORY UNION

Row 1: C. Haugen, Solie, Swanson, Anderson, Haavik, Ford, Nilsen, Lipps, Schiermeyer, Strand. Row 2: Pugh, Hanbury, Archbold, Fisher, Knutzen, Nessvig, E. Haugen, Norgaard, Eliason, Gribbohm. Row 3: Johnson, Hendrickson, Rogen, Martin, Thompson, Gillilan, Hudson, Lundquist, Bolstad, Haldane. Row 4: Arne, Reid, Hvidding, Hansen, Grimstvedt, O'Conner, Lervick, Ordal.



thirty-five



DELTA RHO GAMMA

Row 1: H. Olson, Grass, J. Williams, Irwin, Flint, Torresdal, Kohler, Kapphahn, Hutson, Madsen, J. Benson, Dale, Manousos, Armour, Rorem, Hendrickson, Vogan, Swinehart, Eklund. Row 2: Preus, Stuen, Davis, Tegland, Walter, N. Olson, M. Johnson, Myrah, Berghheim, Gottschalk, Dahl, Monson, Ramstad, Machle, Pearson, Friis, Daniels. Row 3: Tingelstad, Rudd, Savage, A. Johnson, Froyen, Kitchion, Barrett, Burnett, Miller, Larson, Lunde, Boe, Fenney, Hauge, McCullough, Syverson, Gilbert, Raudebaugh, Brunner. Row 4: Asper, Langness, Watts, L. Williams, Goff, Thompson, Bergstrom, Dahle, E. Benson, Newberg, Collier, Pederson, Nagel, Norby, Stenberg, Merz.

With interest in club activities and enthusiasm in carrying them forward, Delta Rho Gamma

Delta Rho Gamma

girls have made their organization one of the major clubs in school this year. Composed of all day girls, this group initiates and completes projects with a vigor and ability which justifies its place among the school's most important organizations. Because of its various activities many girls are called upon to serve on committees, thus proving their ability to cooperate.

Delta Rho Gamma started the year with following officers: president, Gertrude Stenberg; vice-president, Ellen Bergstrom; recording secretary, Rachel Flint; corresponding secretary, Judith Benson; treasurer, Ione Madsen. The officers for the spring semester were: president, Bergliot Vogan; vice-president, Amy Gilbert; recording secretary, Marian Peterson; corresponding secretary, Louise Williams; treasurer, Louise Hendrickson. Mrs. Esther Davis was adviser.

Plans for a Red Cross Room, which were started last fall, are now being considered by Mr. Ludvig Larson, business manager of the College. It is hoped that such a room will be a reality by next fall. Together with the Pep club, the Delta Rho Gammass sponsored a Thanksgiving drive and a Christmas party. The club also made up a Christmas basket. The observance of May Day, which was initiated last year, was successfully repeated this spring under the auspices of the day girls. The house party was another successful feature held at Horsehead Bay Lodge.

To encourage a high standard of friendship, school spirit, and cooperation among all students is the purpose of this club.

Day Boys' Club

Organization is the keynote to success, concerted action is most powerful, and co-operation is foregone attainment. These adages are constantly proved in all walks of campus life, and, in particular, by the Day Boys' Club.

The Day Boys' Club is a comparatively new organization, composed of boys who live outside the school dormitory. Because this group constitutes the majority of male students at Pacific Lutheran College, its influence is felt in all activities. Its purpose is not only to help promote the friendly relations between students, which characterizes all organizations at Pacific Lutheran College, but also to synchronize and direct the activities of its members.

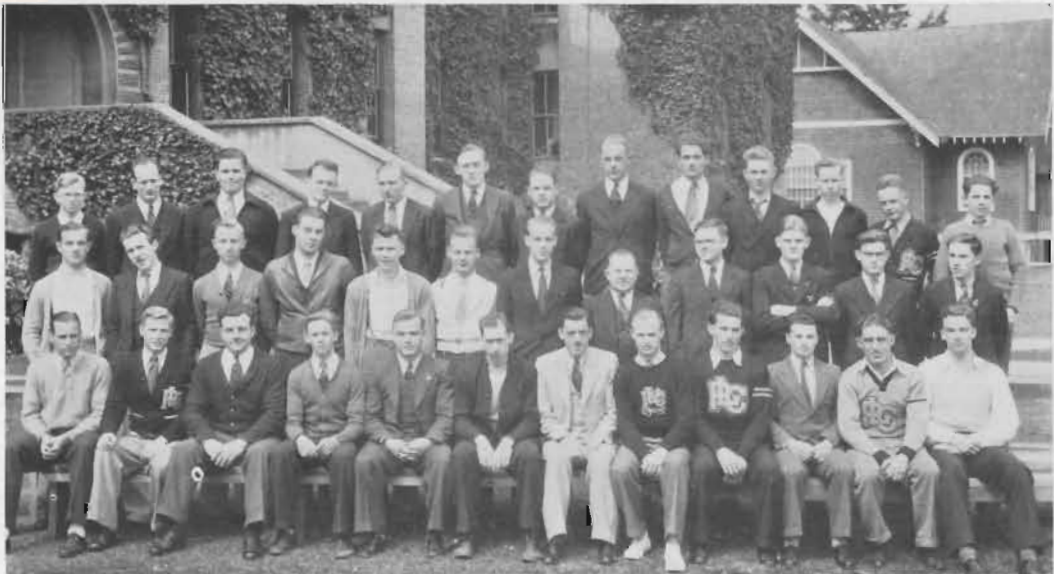
During the first month of school, the Day Boys organized into an active club. At the first meeting, Arnold Anderson was elected president, and Lloyd Roti secretary-treasurer. One of the outstanding events of the year was a party sponsored jointly with the Delta Rho Gamma.

In the newly formed intramural ball league, the Day Boys were represented by two teams, one of which, the Hayseeds, captained by Paul Larson, won the championship of the first half of the season. Robert Martin was leader of the Day team, known as the City Slickers. This activity alone has done much to weld the organization into a compact and smoothly running unit.

This club is potentially strong, and with the continuation of interest evidenced this past year should accomplish much to uphold its traditions of Pacific Lutheran College.

DAY BOYS' CLUB

Row 1: Schlanbusch, Myhre, Van Leuven, Svare, Votaw, Dreibelbis, Manousos, Anderson, Svinth, W. Pflueger, Martin, Frye. Row 2: Armstrong, Brockway, Burgoyne, Sulser, Larsen, Steiro, Roti, Hunter, Breseman, Hanson, Stuen, G. Pflueger. Row 3: P. Larson, Colton, Bondy, Tayet, Hopp, Olson, Hutchison, Dahl, Bitter, Asper, Thompson, McCormick, Xavier.





LUTHERAN DAUGHTERS OF THE REFORMATION

Row 1: H. Olson, Swanson, K. Anderson, Evans, Withrow, Schlanbusch, B. Hauge, Craft, Hokenstad, Quale, L. Hauge, Manousos, D. Anderson, Torrison, Dahl. *Row 2:* Rorem, Hvidding, Hugo, Jackson, Nash, Torresdal, Thompson, Brunner, Friis, Bodrero, Monson, Larson, Lunde, Savage, Nolan. *Row 3:* Nagel, Boe, Hayward, S. Johnson, Langness, Rust, Holtcamp, Bergstrom, Newberg, Norby, Svare, Stenberg, Vogan, Tingelstad, Ramstad, Odell. *Row 4:* Froyen, A. Johnson, Preus, Asper, Hagerup, Ness, A. Johnson, Hauke, Gottschalk, Fenney, Stuen, Davis, Tobiasson, Hendrickson, Pearson, Lilja, Heggem.

The Lutheran Daughters of the Reformation is one of the many organizations at Pacific Lutheran College which bring the student into actual contact with the work of the Lutheran Church. This organization is a branch of the Women's Missionary Federation. As such it has a four-fold purpose—to help the women students learn to know Christ as their personal Savior, to be a means through which their religious life may find expression, to acquaint them with, and train them for, Christian service in the church, and to unite the societies of the younger women into cooperative efforts in the church. Monthly meetings were held throughout the school year at the homes of the faculty, with the faculty wives as hostesses.

L. D. R.

Many projects were successfully carried out during the school year by this group. At the beginning of the fall term a reception for new members was held in the college reception room. During the Christmas season, boxes of gifts were sent to the Parkland Children's Home in Everett, Washington, and to the Lutheran Deaconess Hospital in Chicago. As a national project the Lutheran Daughters of the Reformation are helping maintain the mission at Shishmaref, Alaska. A Mothers' and Daughters' tea is given annually. At this delightful event, held in the college dining hall, the mothers of the members are feted.

Ruth Haugland and Rhoda Hokenstad were the delegates to the convention of the South Puget Sound section of the Women's Missionary Federation, held in Tacoma. At the convention of this same group, held at Mountain View, Rhoda Hokenstad and Valborg Norby represented the group and presented a paper entitled "The Aim and Object of the Lutheran Daughters of the Reformation on our College Campus." Rhoda Hokenstad and Valborg Norby were delegates also to the convention of the North Puget Sound Women's Missionary Federation held at Everett, Washington.

Officers of the Lutheran Daughters of the Reformation were: Rhoda Hokenstad, president, Margaret Craft, vice-president; Frederika Schlanbusch, secretary; and Bernice Hauge, treasurer.

Mission Society

One of the many interesting societies at Pacific Lutheran College, which afford the students an opportunity to take an active part in the work of our church, is the Mission Society. This group, which meets bi-weekly in the college recreation room, has for its purpose the study of that important part of our church work—missions and missionaries. Interesting papers on this subject are prepared by members of this society and presented at the regular meetings. Students of this organization lead in the regular devotion at each meeting, and various members often render musical selections for the program.

Meetings of the Mission Society are not, however, devoted entirely to the study of missions, but are partly devoted to the discussion of the many vital problems that confront the Christian student. Rev. J. P. Pflueger and other members of the college faculty lead in these discussions and guide the members in answering the many questions that may arise.

As an active part in the mission work of our church, the Mission Society supports a boy at a boys' Christian boarding school in Madagascar. It also takes an interest in the home mission field of the church. During Thanksgiving and Christmas, baskets of food were distributed among the needy of the community.

The sponsoring of the movement known as the Pocket Testament League is another major project of the Mission Society. The group has also been instrumental in organizing a local Pocket Testament League, which encourages each member to carry a copy of the New Testament with him and read from it daily.

The Mission Society has been under the leadership of the following officers: Eldon Anderson, Margaret Craft, Jasper Johnson, Eleanor Hauke, Dorothy Anderson, Paul Hvidding, and Hazel Hagerup.

MISSION SOCIETY

Row 1: Hauke, Hagerup, Craft, Pflueger, E. Anderson, J. Johnson, D. Anderson, Evans, Odell, Tobiason, Torrison.
Row 2: S. Johnson, Bodrero, Hauge, Hugo, Quale, Holtcamp, Rust, K. Anderson, Withrow, Lilja, G. Pflueger.
Row 3: Ness, A. Johnson, Buxton, Hayward, K. Hvidding, Kuhn, Heggem, Hokenstad, Nash, Jackson. Row 4: Hendrickson, Pugh, Fisher, W. Pflueger, Haugen, Swanson, Norgaard, Olson, Gribbohm, Nesvig, Arne.



thirty-nine



Hageness, Knutzen, Thrane, Nyman.

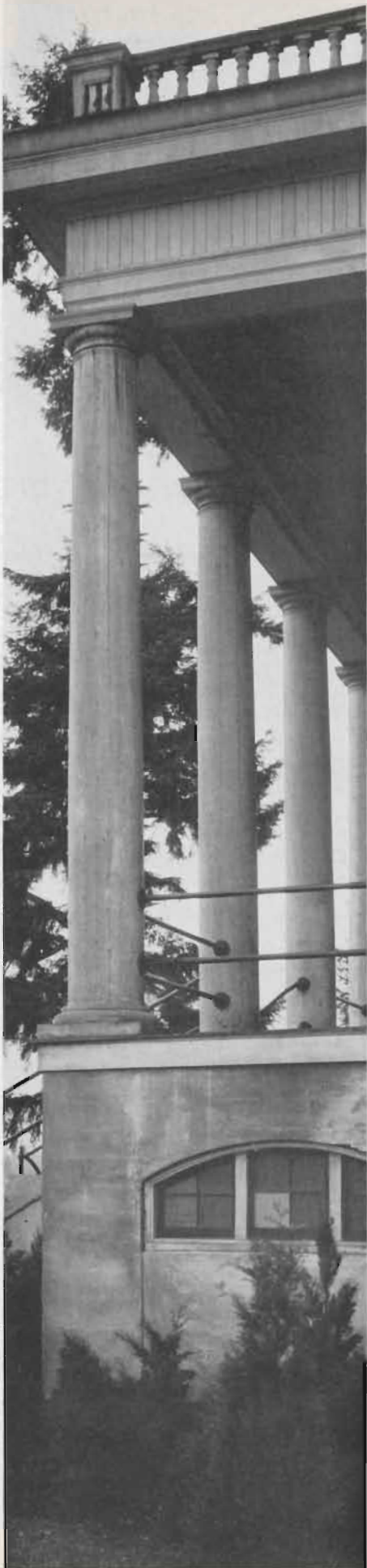
The Pacific Lutheran College Alumni Association held one of its most successful reunions February 23 and 24. To be guest speaker for the occasion, Dr. Carlo A. Sperati, first music director at Pacific Lutheran Academy traveled to the West from his present post at Luther College in Decorah, Iowa. Many graduates of Pacific Lutheran College as well as of Pacific Lutheran Academy attended the Reunion to greet this distinguished guest.

Alumni

"The March of Time" was the theme of this year's banquet. Lining the walls of the dining hall were artistic designs, made by Mr. Myron Kreidler, of persons connected with the history of the College. Olai Hageness, president of the Alumni Association, welcomed the class of 1935, with Roland Swanson, class president, responding. Burton Kreidler, '25, A. J. Haug, '15, and Mrs. L. G. Nyhus, '05, gave greetings. As guest speaker, Dr. Sperati recalled memories of the days when he was the first musical director at Pacific Lutheran University, as the school was then called. Urged by President Tingelstad, he gave several drum selections, which aroused the greatest enthusiasm. Undergraduates presented incidental numbers.

On the following morning, Dr. Sperati delivered the Reunion sermon in the College chapel, and in the afternoon directed the "Choir of the West," greatly augmented by alumni members, in one of its most loved concert songs, "Beautiful Savior." This closed the Reunion.

The Alumni Association's official business consisted of electing new officers to the alumni board. Those who will serve for the coming two years are: Walter French, '33; Carl Coltom, '30; Rudolph Sanderson, '29; Ida Hinderlie, '31; and Kathryn Johnson, '34. Those who will continue to serve on the board are Helen Thrane, '32; Fred Scheel, '30; Ruth Fadness, '26; Birger Nelson, '24; and J. P. Pflueger, faculty representative. The Association empowered the board to elect an executive secretary from the College staff. Officers for 1934-35 are: president, Olai Hageness, '31; vice-president, Gladys Knutzen, '28; secretary, Helen Thrane, '32; treasurer, Wilbert Nyman, '31.



Athletics



Coach C. O. Olson

Football

JOHN FADNESS—"Fud" returned for his fourth year of competition and, as a roaming center on defense, couldn't be beaten.

MARVIN HANSEN—"Marv" played his very best at guard position, and many times pulled the "Glads" out of a tough hole with his excellent punting.

SHELDON MOE—As a quarterback, there was none better in the conference than "Dutch." His ability at calling the right plays at the right time and at finding the weakness in the opposing team was most uncanny.

HAROLD VOTAW—Speed merchant and ball-carrier deluxe was "Hal." Although injured the first part of the season, he came through with a showing the school is proud of. "Hal" was captain of the champion Gladiator squad.

GENE JACK—Gene played his position at end like a veteran. His height and ability for snagging passes were a great asset to the team. Gene will be returning next year, and great things are expected of him.

RUSSELL FRYE—This was "Mutt's" second year of college competition and showed him remarkable at tackle position. "Mutt" will return next fall as captain of the line.

HAROLD O'CONNOR—"Bucky" was one of the fastest backfield men on Coach Olson's eleven. As co-captain elect for next fall, he should accomplish great things.

ROBERT MARTIN—"Bob" played a bang-up game at guard position. He had a knack of getting through the opposing line and grabbing the ball-carrier before he got started.

Lettermen



Capt. Harold Votaw

ED SVINTH—The iron man of the line was none other than Ed. Though quite a light man, and outweighed in almost every game, the opposition had a hard time pushing Ed around. He will be back next fall with two years' experience.

HAROLD NILSEN—In this, his first year of college competition, "Bissel" proved himself most capable. He had fight and grit, and very few opposing backs ever got around the left flank which he was defending.

CHESTER SOLIE—Although quite light, "Chet" occupies the halfback berth well. "Chet" also has two more years of competition left.

PAUL HVIDDING—Paul was a very plucky guard. Light, but gritty, he was a tough man to push out of the way.

LAURENCE GRENIER—Grenier was a new man at the game, but played excellent ball at the guard position.

OLIVER LUDLOW—Short but with plenty of weight and power, "Pug" was always there when there was any ground-gaining to be done. He will be back again next year to hold down the fullback berth.

FRANCIS ARCHBOLD—"Archie" was out the first part of the season with a bad shoulder injury, but ended up strong. "Archie" was shifted from quarterback to end and played the position very well. He is returning next year.



FOOTBALL

Row 1: Nesvig, Ford, Svinth, Hansen, Capt. Votaw, Fadness, Martin, Frye, Nilsen. Row 2: Anderson, Pflüger, O'Conner, Archbold, Reems, Van Leuven, Mitchell, Gillilan, Ludlow, Haavik. Row 3: Coach Olson, Grenier, Hvidding, Schlanbusch, Coltom, Sanderson, Dreibelbis, Stuen, Solie, Norgaard.

Material, strong reserves, as well as an excellent coach, this year enabled the Pacific Lutheran College gridsters to complete the most successful season in the history of the institution. After getting off to a slow start, the highly-praised Gladiators smashed through the season with five very impressive victories over various colleges of the Northwest and but two defeats, one being by a battleship squad, composed, mainly, of ex-Annapolis grid stars.

Football

The season's opener was with the strong Linfield eleven. Although having the edge throughout the whole game, the Gladiators weakened toward the close of the game and allowed the boys from McMinnville to push over a score. The Lutherans' only score came early in the second quarter, the powerful Gladiator line breaking through and swamping a Linfield back for a touchback and two counters.

Taking the worst beating of the season, Coach Olson's boys were swamped by the champions of Uncle Sam's fleet. The "gobs" were much heavier than our squad and as a result, Stanley Ford, reserve end, was shelved for the remainder of the season with a broken finger, and Gene Jack, first string end, was out for a few weeks with a bad ankle sprain.

The following week-end, the Gladiators broke into the winning column, to stay unbeaten for the remainder of the season. The highly-rated Bellingham Normal eleven was downed by the score of 5-3 at the annual Homecoming. The game was the most thrilling one ever witnessed at Lincoln bowl. At half time the score stood 3-2 in favor of the boys from the North, but a long field-goal by O'Conner, stellar half-back, put the game on ice for the Lutherans.



O'Conner going around U. S. S. Maryland's end, at Lincoln Bowl.

Record

The victorious march was continued with a 6-0 win over the Army at Ft. Lewis. The boys got off to a very slow start, but a long pass from Moe to O'Conner in the third canto gave the Gladiators six points and victory. The soldiers were entirely outclassed but managed by some mystical power to hold Coach Olson's boys to one touchdown. Once again the powerful Lutheran gridsters took to the road, and this time returned with a victory over Albany College, members of the Northwest Conference. Some very nice broken field running was done in the part of Moe, O'Conner, and Votaw. The Albanites were simply swept off their feet by the trick plays and passing offense and defense of the Lutherans. The boys had found their stride and were not to be stopped.

The final two games were walk-aways. St. Martin's College crumbled under the attack of the Lutherans' 25-6. The victory was a revenge over what took place last year, when Hal Votaw, versatile halfback, was carried off the field with a broken ankle. In the final game of the season, the Gladiators utterly swamped the boys from the University of British Columbia. However, as this was the Canadians' first year of the great American sport, they did very well in spite of their inexperience.

1934 SCORES

Sept. 30	Pacific Lutheran College....	2	Linfield	7
Oct. 6	Pacific Lutheran College....	0	U. S. S. Maryland	20
Oct. 13	Pacific Lutheran College....	5	Bellingham	3
Oct. 20	Pacific Lutheran College....	6	Fort Lewis	0
Oct. 27	Pacific Lutheran College....	26	Albany	0
Nov. 10	Pacific Lutheran College....	25	St. Martin's	0
Nov. 17	Pacific Lutheran College....	51	Univ. British Columbia	12
				<hr/>
		115		42

GENE JACK

Three-year center and forward, "Gene" was one of the most valuable men on this year's squad. He was high-point man for the conference race as well as for the whole season.



JOHN FADNESS

Not only is "Fud" good in football but also does he play a very good brand of basketball, holding down the guard berth. "Fud" did much toward helping the Gladiators win their second consecutive Junior College Championship.



HAROLD VOTAW

"Hal" played a very good game at forward and did much toward the winning of the trophy cup.

ARNOLD TOMMERVIK

"Tim" was the big factor in this year's combination. He could always be depended upon to guard the hoop to the utmost as well as to make a few counters.





STANLEY FORD

Another Everett boy who made good at P. L. C., "Stan" was a very dependable guard although lacking experience. We hope to see him back in uniform next year.

HAROLD NILSEN

The tallest man on the squad and also one of the very best, "Bissel" played a marvelous defensive game and always was good for points.

SHELDON MOE

Probably one of the cleverest and fastest ball handlers in the conference was "Dutch." "Dutch" was on his way to high scoring honors when he dropped out of school at mid-year.

LYAL SANDERSON

This was "Sandy's" last year of play, and he will be sorely missed next season. "Sandy" was always good for a few points.

CHESTER SOLIE

Solie was a transfer from Mt. Vernon J. C. but fitted very well into Coach Olson's style of play. "Chet" was the coolest player on the floor, and big things are expected of him next year.



BASKETBALL

Row 1: Sanderson, Solie, Jack, Nilsen, Fadness, Votaw, Tommervik, Ford.
 Row 2: Coach Olson, Pflueger, O'Conner, Haavik, Knutzen, Archbold, Anderson, Coltom, Preus, Hansen, Norgaard.

Bringing to Pacific Lutheran College its second successive Junior College Basketball championship, for the State of Washington, with eight wins and no losses in conference play, Coach Olson's hoopsters closed their schedule with the season's record of 17 wins and 6 losses. This year's edition of the Lutherans proved to be a high-scoring outfit, running through their conference schedule undefeated and piling up 280 points, an average of 35 points per game. This was shown even more clearly when the Lutherans ran up 803 points for a season's total, averaging 33 points per game, while holding their opponents, who included some of the strongest small college teams in the Northwest, to 547 points.

Basketball

As a result of their conference championship, Pacific Lutheran College again retains possession of the coveted cup, given last year by the Yakima Chamber of Commerce to the winner of the Junior College Conference. A school must win the cup three successive times in order to gain permanent possession of it.

Some of the men who were outstanding for P. L. C. and who made it possible for such an exceptionally fine season are, first of all, Gene Jack, veteran center, who set the scoring pace for the conference. Gene scored 193 points in the 20 games in which he played, an average of 10 points a game. This is a new record for the conference and a mark for the rest of the schools to shoot at in future seasons.

Another high-scoring Gladiator this year was Sheldon Moe, diminutive forward, who led the conference last year. "Dutch" was leading his team-mates this year with 105 points, up to the time he dropped out of school in January.

John Fadness, three-year letterman at guard, played a big part in winning the cup before he also dropped out of school to enroll at C. P. S. "Fud" was very adept at retrieving the ball off the backboard.

Among the freshmen who played outstanding ball and who did a great deal in helping to win the cup for their Alma Mater is Harold Nilsen, towering center, who besides getting the tip-off consistently from opposing centers, ended the season with a personal total of 125 points to take second place in the individual scoring race. Two other "rookies" who made good are Chester Solie and Arnold Tommervik. Both boys played remarkably well all season and did much toward winning the cup.



Gladiators in a fast practice scrimmage.

Record

In looking back on his team's total points as compared with those of his opponents, Coach Olson expressed himself well satisfied with the performance of his players, and their record. Next year may see even greater things from the Gladiator casaba wizards, since upon their play during 1935 season of the Junior College Conference will depend whether or not they gain permanent possession of the Yakima Chamber of Commerce cup. The Glads have won it twice, and must win it a third time before they can call it their own.

1934-5 HOOP SCORES

*Pacific Lutheran College.....	59	Centralia J. C.	15
*Pacific Lutheran College.....	29	Grays Harbor J. C.	23
Pacific Lutheran College.....	49	Ballard Lutheran A. C.	17
Pacific Lutheran College.....	14	U. British Columbia	13
Pacific Lutheran College.....	57	Oregon Tech.	23
Pacific Lutheran College.....	58	Oregon Tech.	13
Pacific Lutheran College.....	29	St. Martin's	27
*Pacific Lutheran College.....	41	Centralia J. C.	13
*Pacific Lutheran College.....	46	Yakima J. C.	34
Pacific Lutheran College.....	18	Ellensburg Normal	26
*Pacific Lutheran College.....	29	Mt. Vernon	26
Pacific Lutheran College.....	24	Seattle College	17
*Pacific Lutheran College.....	46	Yakima J. C.	33
Pacific Lutheran College.....	33	Seattle Pacific	22
Pacific Lutheran College.....	19	Ellensburg Normal	20
Pacific Lutheran College.....	33	Seattle Pacific	34
*Pacific Lutheran College.....	22	Grays Harbor J. C.	17
Pacific Lutheran College.....	24	Bellingham Normal	27
*Pacific Lutheran College.....	39	Mt. Vernon	30
Pacific Lutheran College.....	37	St. Martin's	16
Pacific Lutheran College.....	39	Seattle College	32
Pacific Lutheran College.....	26	Bellingham Normal	31
Pacific Lutheran College.....	31	U. of British Columbia	38

803

547

*Conference Games.

forty-nine



Row 1: Lehmann, Manousos, Myhre, Johanson, Burgoyne, Stuen.
 Row 2: Thompson, Dahl, McCormick, Hinderlie, Preus.

For those who are unable to participate in any major sport, an opportunity is given to enter either tennis or golf. These two minor sports have had a decided place in the athletic program at Pacific Lutheran College. Each year tournaments are conducted to determine the school champion and the various teams to represent the college. P. L. C. has competed, and is at present competing, with various junior colleges in the State. Not all of the scheduled matches have been played, but to date the Gladiator squads have done very well, considering the time they have to practice and the weather.

Tennis and Golf

The golf team made a very good start by trouncing the highly rated squad from the College of Puget Sound. Although playing in very bad weather, the Gladiators were able to conquer the Loggers 20-4. They were not, however, quite so fortunate in the next two return matches with the same opponents, dropping both by very close scores. On the first road trip, the Glads won a decisive victory over Aberdeen, but dropped the remaining three games by a slim margin. There are still a few games remaining on the golf schedule, and we are confident that the boys will come through in great style.

The tennis squad started out very slowly, losing three matches in a row, but finally came out of the cellar to win the last two. Like the golf team, the tennis squad has a number of matches left to play, and we know, now that they have hit their stride, they will be a tough bunch to beat.

The members of the golf squad are: Orvoll Dahl, Alvin Lehmann, Paul Preus, Lloyd Thompson, Ray Hinderlie, John Stuen, Harry McCormick, and Eugene Burgoyne. The tennis team comprises: Bertrum Myhre, A. Manousos, Sydney Glasso, Eugene Burgoyne, and Harold Johanson.



HIGH SCHOOL BASKETBALL
 Hutchison, McCormick, Xavier, Larson, Gribbohm, Svare, Thompson, Pflueger, Hudson, Asper, Haugen,
 Schlanbusch, Ramstad.

High School Basketball

Because of the new ruling adopted by the leaders of the Junior College Conference this year, which grants but three years of competitive sports to individuals in college, a high-school squad was formed and coached by Professor A. W. Ramstad. This enabled the undergraduates not only to get plenty of play, but also experience in competition as well.

Like their older brothers, the P. L. C. varsity, the youngsters from the High School Division did very well in this season's play, meeting teams from other high schools in this vicinity as well as various independent teams. Out of thirteen games played, the "baby" Gladiators won six, and lost seven, which is very satisfactory for their first year. Such teams as the Stadium and Lincoln reserves, the Kapowsin High School, and the Bremerton Methodist formed the opposition.

Coach Olson should keep his eye on some of these youngsters, who in a few years may become the nucleus of the College varsity. Next year promises to be a big year for the High-School boys, as many of this year's lettermen are returning.

Pacific Lutheran College.....	35	Bellarmino H. S.	20
Pacific Lutheran College.....	44	Lincoln Reserves	21
Pacific Lutheran College.....	23	Washington Hardware	22
Pacific Lutheran College.....	26	Lacey Farm Dairy	25
Pacific Lutheran College.....	20	Stadium Reservec	23
Pacific Lutheran College.....	16	Kapowsin	40
Pacific Lutheran College.....	34	Kapowsin	26
Pacific Lutheran College.....	18	Roy	42
Pacific Lutheran College.....	34	Roy	36
Pacific Lutheran College.....	29	Parkland Trinity Church	28
Pacific Lutheran College.....	18	Bremerton Methodist	48
Pacific Lutheran College.....	23	Bremerton Methodist	26
Pacific Lutheran College.....	33	Spanaway A. C.	19



MEN'S ATHLETIC ASSOCIATION

Row 1: Martin, Svinth, O'Conner, Votaw, Jack, Sanderson, Norgaard, Hansen. Row 2: Preus, Dahl, Thompson, Burgoyne, Anderson, Nilsen, Frye, Lehmann. Row 3: Hvidding, Solie, Tommervik, Stuen, Archbold, Glasso, Myhre, Ford, McCormick.

Men's Athletic Association

The purpose of the Men's Athletic Association at Pacific Lutheran College is to raise the standards of athletics, to promote a spirit of good fellowship, and to foster more and better athletic activities.

This organization, which had not been functioning during the last year or two, was this year revived and has made real progress. We hope that this club may not only continue to function, but grow in power and strength in the years to come. It can do very much toward the fostering of better sportsmanship and more sincere fellowship among the men at Pacific Lutheran College.

At present this organization numbers twenty-six lettermen, of whom fifteen are lettermen in football, eight in basketball, six in golf, two in tennis, and two are managers.

The club is headed this year by Gene Jack, president, and Hal Votaw, secretary-treasurer. This year the wearers of the P. L. C. emblems have sponsored various things for the purpose of raising money so that gold basketballs may be given the basketball squad who for the last two years have won the Washington State Junior College Basketball Championship. A basketball game was sponsored between the "Day Boys" and the "Dorm Boys," the "Dormsters" emerging the victors. As their second project, the M. L. A. sponsored a skating party, held during the last part of April.

Members of this organization are: football and basketball, Fadness, Moe, Votaw, Jack, Nilsen, Solie; football, Hansen, Frye, O'Conner, Svinth, Hvidding, Grenier, Ludlow, Archbold, Martin; basketball, Ford, Tommervik; tennis, Burgoyne, Myhre; golf, McCormick, Preus, Stuen, Hinderlie, Thompson; managers, Anderson, Norgaard.



WOMEN'S ATHLETIC ASSOCIATION

Row 1: Mrs. A. H. Dapper, physical education instructor, Hutson, Lilja, Benson, Hokenstad, Nash, Manousos, Flint,
Row 2: Williams, Vogan, Stenberg, Norby, Bergstrom, Hagerup, Craft.

Women's Athletic Association

Every girl participating in athletics at Pacific Lutheran College automatically becomes a member of the Women's Athletic Association. The purpose of this organization is to promote health, ideals, true sportsmanship, and to further the interest in athletics for girls. The following served as officers this year: Rhoda Hokenstad, president; Mary Nash, vice-president; Judith Benson, secretary; Joanna Manousos, treasurer; Helen Lilja, sergeant-at-arms; Rachel Flint, reporter, with Mrs. A. H. Dapper, physical education director, as adviser. The cabinet appointed the following managers to arrange the details of each sport: Valborg Norby, basketball; Gertrude Stenberg, volleyball; Jane Williams, track; Margaret Craft, golf; Enid Hutson, tennis; Hazel Hagerup and Ellen Bergstrom, hiking; and Bergliot Vogan, baseball.

For the first time in its history, the school will award athletic letters to girls. These will be earned by a point system, five hundred points being required for a letter. They are available in basketball, volleyball, baseball, track, tennis, golf, hiking, and posture.

Among the activities sponsored by the Women's Athletic Association were two gym frolics, consisting of relay races, games, and refreshments.

The principal event of the year sponsored by the Women's Athletic Association was the gym demonstration given on the evening of March 15. This was an exhibition of all of the work undertaken during the year, and consisted of folk dances, clog dances, tap dances, marching, and tumbling. To close the evening, the Day and Dorm girls played a scrappy game of basketball, with the "Outsiders" as victors.



GIRLS' BASKETBALL

Benson, Manousos, Stuen, Schlanbusch, Norby, Fenney.

Because of the close and keen competition, the championship for the girls' basketball teams was left undecided. The High School and Second Year Normal teams tied for first place, each winning the same number of games. Never before has such enthusiasm been shown for basketball among the girls at Pacific Lutheran College. Because of the number of participants it was necessary to choose two teams from each class. Each game displayed two scrappy, hard-fighting squads playing for the sport of the game as well as for the honor of winning.

Girls' Basketball

The teams were chosen from the games played during class periods. The five teams chosen by Mrs. Dapper, physical education director, Valborg Norby, basketball manager, and Rhoda Hokenstad, president of the Women's Athletic Association, were: High School—forwards, Elizabeth Stuen, Norma Preus; centers, Alice Boe, Virginia Davis; guard, Frederika Schlanbusch, Melba Fenney; First Year Normal—forwards, Eleanor Hauke, Helen Lilja, Helen Holtcamp; centers, Thelma Ness, Judith Benson; guards, Hazel Hagerup, Edna Tobiason; Second Year Normal—forwards, Ruth Froyen, Gertrude Stenberg; centers, Valborg Norby, Enid Hutson; guards, Edna Kelsey, Joanna Manousos; Third Year Normal—forwards, Alice Barnum, Virginia Mahncke; centers, Shirley Savage, Virginia Boen; guards, Jane Williams, Evelyn Irwin; Liberal Arts—forwards, Rhoda Hokenstad, Irene Odell; centers, Pauline Kuhn, Mildred Monson; guards, Thelma Daniels, Anne Johnson.

It is the custom each year to choose an all-star, or honor, team from all the girls participating in basketball during the season. Each member of the team is chosen for the following qualifications: sportsmanship, fair play, and ability to play the game. Mrs. A. H. Dapper chose these girls for the all-star basketball team of 1935: forwards, Joanna Manousos, Second-year Normal, Elizabeth Stuen, High School; centers, Valborg Norby, Second-year Normal, Judith Benson, First-year Normal; guards, Frederika Schlanbusch, High School, Melba Fenney, High School.

The following players were given honorable mention: Eleanor Hauke, Enid Hutson, Thelma Ness, Virginia Davis, Hazel Hagerup, Alice Boe, Rhoda Hokenstad, and Edna Kelsey.



GIRLS' VOLLEYBALL

Benson, Hauke, Johnson, Daniels, Barrett, Hagerup, Kelsey, Froyen, Ness, Hokenstad.

Girls' Volleyball

The First-year Normal team captured the championship title in volleyball. Much enthusiasm was shown for this sport, with approximately one hundred girls trying for the

teams. Gertrude Stenberg, volleyball manager, and Mrs. A. H. Dapper chose the following teams:

High School: Norma Preus, Alice Boe, Melba Fenney, Gunhild Larson, Frederika Schlanbusch, Gertrude Tingelstad, Virginia Davis, Elizabeth Stuen, Helen Olson, and Agnes Lunde. Substitutes: Charlotte Gottschalk, Elizabeth Dahl, and Dorothy Hayward.

Liberal Arts: Rhoda Hokenstad, Anne Johnson, Evelyn McCullough, Ida Thompson, Irene Odell, Mildred Monson, Thelma Daniels, Teresa Sells, Hedvig Dahle, and Karen Hvidding. Substitutes: Bernice Hauge and Jane Bergheim.

First-year Normal: Judith Benson, Louise Williams, Mary Grass, Edna Tobiason, Thelma Ness, Elsie Barrett, Eleanor Hauke, Hazel Hagerup, Helen Holtcamp, and Jean Armour. Substitutes: Kathryn Anderson, Helen Lilja, Pauline Watts, and Louise Hendrickson.

Second-year Normal: Enid Hutson, Marie Johnson, Gertrude Stenberg, Edna Kelsey, Valborg Norby, Ruth Froyen, Bergliot Vogan, Ellen Bergstrom, Neva Olson, and Lone Madsen. Substitutes: Eleanor Raudebaugh, Eline Benson, Eula Mae Goff, and Margaret Craft.

Third-year Normal: Virginia Boen, Virginia Mahncke, Nancy Burnett, Lila Rudd, Alice Nolan, Marjorie Meade, Shirley Savage, Jane Williams, Louise Jackson, and Evelyn Irwin. Substitutes: Alice Barnum, Dilie Quale, and Mary Nash.

Because of their cooperation, good sportsmanship, and ability to play the game, the following were chosen as honor team members: Ruth Froyen, Edna Kelsey, Second-year Normal; Judith Benson, Thelma Ness, Elsie Barrett, Eleanor Hauke, Hazel Hagerup, First-year Normal; Rhoda Hokenstad, Anne Johnson, Thelma Daniels, Liberal Arts.

Honorable mention was given to the following: Valborg Norby, Gertrude Stenberg, Enid Hutson, Marie Johnson, Second-year Normal; Evelyn Irwin, Marjorie Meade, Lila Rudd, Third-year Normal; Louise Williams, First-year Normal; Frederika Schlanbusch, High School.



Manager Vogan

For the first time in the history of the school, baseball was introduced to the girls at Pacific Lutheran College as a major sport. Turnouts for the class teams were held during the regular class periods. For membership on the baseball team, a girl will be awarded one hundred points toward her athletic letter. To determine the champion team, the final game will be played on Field Day. After the last game has been played, an honor team will be chosen by Mrs. A. H. Dapper, girls' physical education director. The members of this group will be the most outstanding players from each of the class teams. Fifty extra points will be awarded to each honor-team member.

Girls' Baseball

One of the most interesting games of the season was played on Campus Day, between the faculty and the girls.

The following teams were chosen: High School: Elizabeth Dahl, Melba Fenney, Norma Preus, Alice Boe, Virginia Davis, Gunhild Larson, Agnes Lunde, Frederika Schlanbusch, Elizabeth Stuen, and Gertrude Tingelstad; subs: Charlotte Gottschalk and Helen Olson. Liberal Arts: Bernice Hauge, Mildred Monson, Irene Odell, Teresa Sells, Roberta Torrison, Thelma Daniels, Rhoda Hokenstad, Karen Hvidding, Anne Johnson, and Ida Thompson; subs: Hedvig Dahle and Clarice Myrah. First-year Normal: Jean Armour, Elsie Barrett, Judith Benson, Hazel Hagerup, Eleanor Hauke, Louise Hendricksen, Helen Holtcamp, Alda Johnson, Helen Lilja, Thelma Ness, and Pauline Watts; subs: Mary Grass, Mabel Heggem, Olga Hugo, Agnes Mohn, Edna Tobiason, and Louise Williams. Second-year Normal: Eline Benson, Ruth Froyen, Enid Hutson, Marie Johnson, Edna Kelsey, Valborg Norby, Neva Olson, Eleanor Raudebaugh, Gertrude Stenberg, and Bergliot Vogan; subs: Gertrude Brunner, Margaret Craft, and Ione Madsen. Third-year Normal: Alice Barnum, Marguerite Bodrero, Nancy Burnett, Evelyn Irwin, Louise Jackson, Virginia Mahncke, Marjorie Meade, Mary Nash, Lila Rudd, and Jane Williams.



Manager Williams

Girls' Track

Under the new program of the Women's Athletic Association, the girls at Pacific Lutheran College are showing much interest in track, a new major sport introduced here. This is the first time that girls have had a chance to participate in events of that type. A class competition schedule, consisting of ten events, has been arranged. Each class will be represented by eight members, each of whom may enter three and not more than four events, and every girl must participate in that number to receive one hundred points toward her letter.

Because of the late start and the abundance of material from which to choose, teams have not been chosen up to this date. There is every indication that strong squads will be formed from this wealth of material. To determine the champion in each event, a Field Day will be held near the end of the school year. At that time, the finals in the baseball and tennis tournaments will also be played off.

The following events have been scheduled: in the low hurdles one will be chosen for form, and another for speed. There are two jumps, a high and a broad jump and the running and the hop-skip jump. For the baseball throw, one will be chosen for distance and another for accuracy. The relay race will consist of four members from each class, running the half mile. There will be two dashes, the one hundred yard and the fifty.

Mrs. A. H. Dapper, girls' physical education director, is coaching the girls, and Jane Williams is the track manager.

Next year, track will be an outstanding major sport for the girls, with a more complete program planned.



GIRLS' GOLF AND TENNIS TEAMS

Row 1: Hauge, Williams, Hutson, Froyen, Holtcamp, Stenberg, Norby, Davis, Lilja, Hauke, Odell, Preus, Hagerup, Ness. Row 2: Stuen, Dale, Sells, Benson, Torrison, Hokenstad, Vogan, Rudd, Boen, Nash, Craft, Jackson, Tobiason, Schlanbusch.

Girls' Golf and Tennis

Golf has introduced to Pacific Lutheran College many new and enthusiastic players. With the beautiful eighteen-hole course lying just off the campus, the girls have a wonderful opportunity to play at any time. The Women's Athletic Association has rented a set of clubs that is available to any member of the group.

The class teams were chosen according to the high scores played during the season. The champion will be determined by a match play. According to Margaret Craft, golf manager, an honor team will be chosen after the tournament. The teams are: High School: Elizabeth Stuen, Norma Preus, Frederika Schlanbusch, and Virginia Davis. Liberal Arts: Teresa Sells, Anne Johnson, Irene Odell, and Audrey Ann Dale. First-year Normal: Edna Tobiason, Thelma Ness, Hazel Hagerup, and Helen Holtcamp. Second-year Normal: Marie Johnson, Gertrude Stenberg, Bergliot Vogan, and Margaret Craft. Third-year Normal: Virginia Boen, Louise Jackson, Mary Nash, and Lila Rudd.

The championship for the first team singles and doubles in tennis has not yet been decided. Many girls took an active interest in this sport, and the class teams were chosen through a ladder tournament. The championship will be determined by competition between the members of these class teams. Enid Hutson, manager of the tennis tournament, announced the following teams: First-year Normal: singles, Louise Williams and Eleanor Hauke; doubles, Helen Lilja and Mary Grass. Second-year Normal: singles, Enid Hutson and Valborg Norby; doubles, Ruth Froyen and Eline Benson. Liberal Arts: singles, Irene Odell and Rhoda Hokenstad; doubles, Pauline Kuhn and Bernice Hauge. High School: singles, Virginia Davis and Elizabeth Stuen; doubles, Frederika Schlanbusch and Melba Fenney.



Features



1—Dr. J. C. K. Preus, Dr. O. A. Tingelstad, and his Excellency Gov. Clarence D. Martin.



2—Give the kid his bicycle, Mr. Edwards.



3—Wake up, Toby!



4—Bob, Arnie, Osten, Emmet—the Midnight Sons.



5—Showing off, Joe!



6—Queen Thelma and her court.



7—Football co-captain-elect "Mutt" Frye.

8—Everybody eats—May Day.

9—Armstrong, the snake charmer.

10—Three cheers for Mr. Jackson!

11—Queen Thelma ascending the steps of Old Main.

12—Stuen and Davis—two of a kind

1—Lewis Hunter's clock.



2—Helen and Nosy, Inc.



4—A-hiking we will go.



5—Clarice, how DID you?



6—Helen and Rosie—on the side-walks of - -



7—Coffee—Campus Day!

8—Just Rammy.



9—Highby—The sportsman.

10—Volly, Vern, and Rosie—Yell team.



11—Homeward bound.

12—Working?



1—Going places?



3—Ye ed.



4—Happy, Bissel?

5—Campus crew.

6—What's the matter, Roti? Volly's harmless.



7—Up in the air, Osten?

8—Alumni—and Mesford.



9—Ray and Pauline.

10—He floats through the air—Prexy Van Leuven.



11—Wee Three!

1—Old Glory.



2—P. K.'s—Nezzy and Dahle.

3—Master Dreibelbis.



4—Princess Alla Votaw and his 1950 Ballet.

5—Yours Truly, the snap collector.



6—Astoria—Waiting for the bus.

7—"Clix" around the corner, loafing?



8—Pals—May Day.

9—Three's a crowd, Keith.



10—What! Elnora working?

11—Roy the Wild Man—Saga Carnival.



12—Loafing after the feed Campus Day.

13—Andy and—





Long experience in Annual Building and unlimited personal attention to every detail are the factors that make this an Annual of exceptional merit

PARAMOUNT ANNUAL SERVICE
OF THE
TACOMA ENGRAVING COMPANY
TACOMA, WASHINGTON

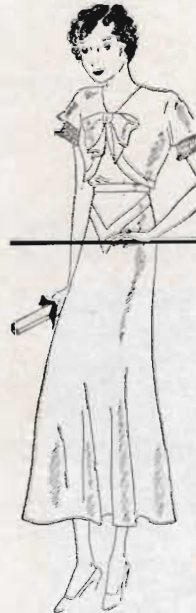


A Lasting Remembrance-

Your Photograph

*When Looking for
Quality Portraits and
Kind Cooperation*

Visit



Hartsook
PHOTOGRAPHS

F. H. KRUG, Artist

Phone MAin 4493

304 Rust Building

Tacoma, Wash.

Individual Portraits
in this annual are reproductions of our work



Butter

Eggs

Cheese

Miller Bros. Co.

Phone BRoadway 2634

**AMOCAT
Food Products**

"THE PEAK OF QUALITY"

Distributed by

West Coast Grocery Co.

Tacoma, Olympia, Chehalis, Aberdeen,
Washington
Ketchikan, Alaska

Parkland Golf Course

One mile south of city limits on
Mountain Highway, west of
Parkland

NEW LOW RATES

18 Holes 25c 9 Holes 15c
FAST PLAY NO DELAYS
EXCELLENT GREENS

PHONE GARLAND 0169-J-3

CORSAGES

Specially Designed to Complete Each
Gown at No Additional Charge

TSCHUNKO'S

"The House of Flowers"

Pacific Avenue at Fiftieth Street
GARland 0514 Tacoma



If You Like to
PLAY GOLF
On Green Fairways

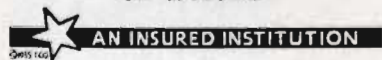
Amid Picturesque Surroundings
COME TO

**BROOKDALE GOLF
COURSE**

15 Minutes fro City Center on
Mountain Highway
Close to P. L. C. on Mountain Highway
GARland 0191-J-1



**PACIFIC FIRST FEDERAL
SAVINGS AND
LOAN ASSOCIATION
OF TACOMA**



11th & Pacific Ave.

Phone MAIn 4194

TACOMA, WASHINGTON

The Student Rendezvous



THE BUG
PARKLAND, WASHINGTON

SCIENTIFIC SUPPLIES
COMPANY



Northwest Headquarters

for

LABORATORY
EQUIPMENT
AND REAGENTS

Chemical - Physical - Biological



123-125 Jackson St. Seattle

PATRONIZE YOUR CLASSMATES

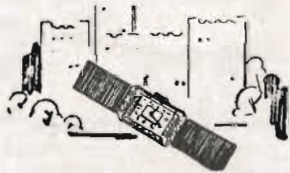
LES and LARRY'S

Certified General Petroleum
Service Station

Mobiloil Mobilgas

LES POTTER '35 LARRY HANSEN
3415 McKinley Ave. MAin 5021

Congratulations
GRADUATES



Watches
Diamonds
Watch Repairing

S. Grimstead
JEWELER

Washington Building
11th & Pacific Ave. Tacoma

For More Than
25 Years—

**OLYMPIC
Ice Cream**

Has been Tacoma's Standard of
Quality



**Associated Photographic
Service**

Incorporated

714 Market St. Tacoma

QUALITY

SERVICE

SATISFACTION

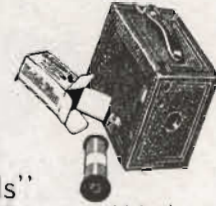
REASONABLE PRICES

Lite-O-Rite Photo Service

ROY A. PETERSON

"Photographic Work of All Kinds"

817 So. 11th St.



Tacoma, Wash.

Athletic Outfitters

Featuring "SPALDINGS"



Hardware Specialists
Handling "Russwin," "Yale" and
"Schlage" Locks

WASHINGTON HARDWARE CO.

BRoadway 1136 924 Pacific Ave.
Tacoma Washington

Peoples Store

Tacoma's
Oldest Department Store

Corner 11th & Pacific Ave., Tacoma

Bonnadelle Beauty Shoppe

Miss Adele Wright

Parkland, Washington



General Merchandise

BROOKDALE GROCERY & MEAT CO.

O. J. ANDERSON, J. JOHNSON—Proprietors

PARKLAND

WASHINGTON

A GOOD EDUCATION is a firm foundation upon which to build your future. Upon this foundation build wisely. Start saving consistently—even a small account at regular intervals—and assure a prosperous future.

PUGET SOUND NATIONAL BANK

1119 Pacific Ave.

Branches: 953 Broadway; 3808 So. Yakima



**Parkland
Mercantile Co.**
Parkland, Washington

Styled for College Men

DAY'S tailor-d

POLO SLACKS

with Blazers to Match

Made in Tacoma

Your Favorite Dealer Has Them

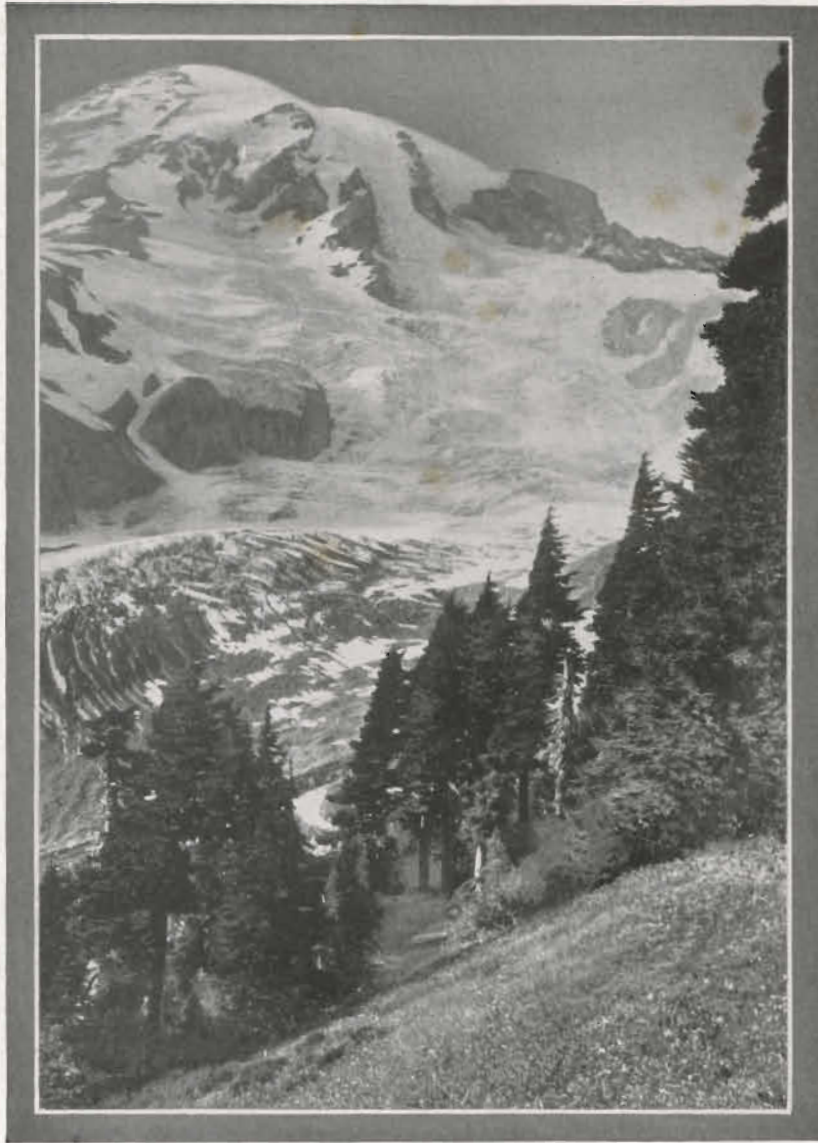
**Cook's
Tacoma Trunk Co.**
for Good Luggage
AT BEST PRICES
GIFT NOVELTIES
New Location
917 Broadway
(Next to Lou Johnson Co.)



BROOKDALE LUMBER CO.

Lumber for any Purpose
Paint and Builders' Hardware

At Brookdale on Mountain Highway



*W*E wish to extend our thanks to the Saga Staff for the efficiency and splendid cooperation displayed in the production of this annual.

JOHNSON-COX COMPANY
726 PACIFIC AVENUE TACOMA, WASHINGTON

After forty years of service

Pacific Lutheran College

extends to graduates, former students,
and friends this

GRATEFUL GREETING

and

pledges to all future students and
supporters continued loyalty to our
cherished ideals

Modern
Life Insurance Certificates
for
Lutherans

MAXIMUM PROTECTION

at

MINIMUM COST

Lutheran Mutual Aid Society

Waverly, Iowa

ON LEGAL RESERVE BASIS

Compliments of

Tacoma
Secretarial School

318-21 Medical Arts Bldg.

MAin 1421

Day School Night School

DAHL
Grocery Company



Parkland, Washington

PUBLIX GARAGE

1111 Commerce St.

PARKING, WASHING,

LUBRICATION, TIRES

COMPLETE SERVICE

WE NEVER CLOSE

TACOMA LUTHERAN CHURCH DIRECTORY

CENTRAL LUTHERAN CHURCH

10th and G Sts. REV. E. M. HEGGE, D. D., Pastor Phone MA. 0691

Bethel Lutheran Church

So. 54th and I Sts. REV. E. ARTHUR LARSON, Pastor

Immanuel Lutheran Church

So. 58th and Birmingham

GRACE LUTHERAN CHURCH

73rd and Park Avenue

REV. H. SVINTH, Pastor

LUTHER MEMORIAL CHURCH

Cor. So. 5th and I Sts. REV. MIKKEL LONO, Th. M., Pastor Phone MA. 4536

OUR SAVIOR'S LUTHERAN CHURCH

So. 17th and J Sts. REV. ALVIN J. LEWIS, Pastor 912 So. 17th. MA. 6357

ST. PAUL'S LUTHERAN CHURCH

So. 27th and Tacoma Ave. REV. ARTHUR SYDOW, Pastor 515 So. 27th. MA. 3295

TRINITY LUTHERAN CHURCH (Am. Luth.)

Co. 13th & I.

REV. J. P. PFLUEGER, Parkland, GAR. 3828-J-5

TRINITY LUTHERAN CHURCH, Parkland

REV. T. O. SVARE, Pastor

Parkland, GAR. 0154-J-1

BETHLEHEM LUTHERAN CHURCH

Cor. Harrison and East G St.

REV. ORVILLE M. RUNNING, Pastor, 3521 East G St.

Phone MAin 0691

FIRST LUTHERAN CHURCH

Cor. 6th and I St.

CONRAD HOYER, Acting Pastor, 811 So. 8th St.

Church: BRoadway 1538

Phone BRoadway 2555

INCREASING number of
discriminating contract
holders, reflect the merits
of

LUTHERAN BROTHERHOOD

LEGAL RESERVE LIFE INSURANCE

Herman L. Ekern, President

608 Second Ave. S.

Minneapolis, Minn.

Truly Appreciated....

The Loyal Advertisers whose names you see on these pages have contributed in no small way toward the successful publication of this annual. We sincerely appreciate their support and urge you to help us show this appreciation by assuring them of

....Your Patronage

