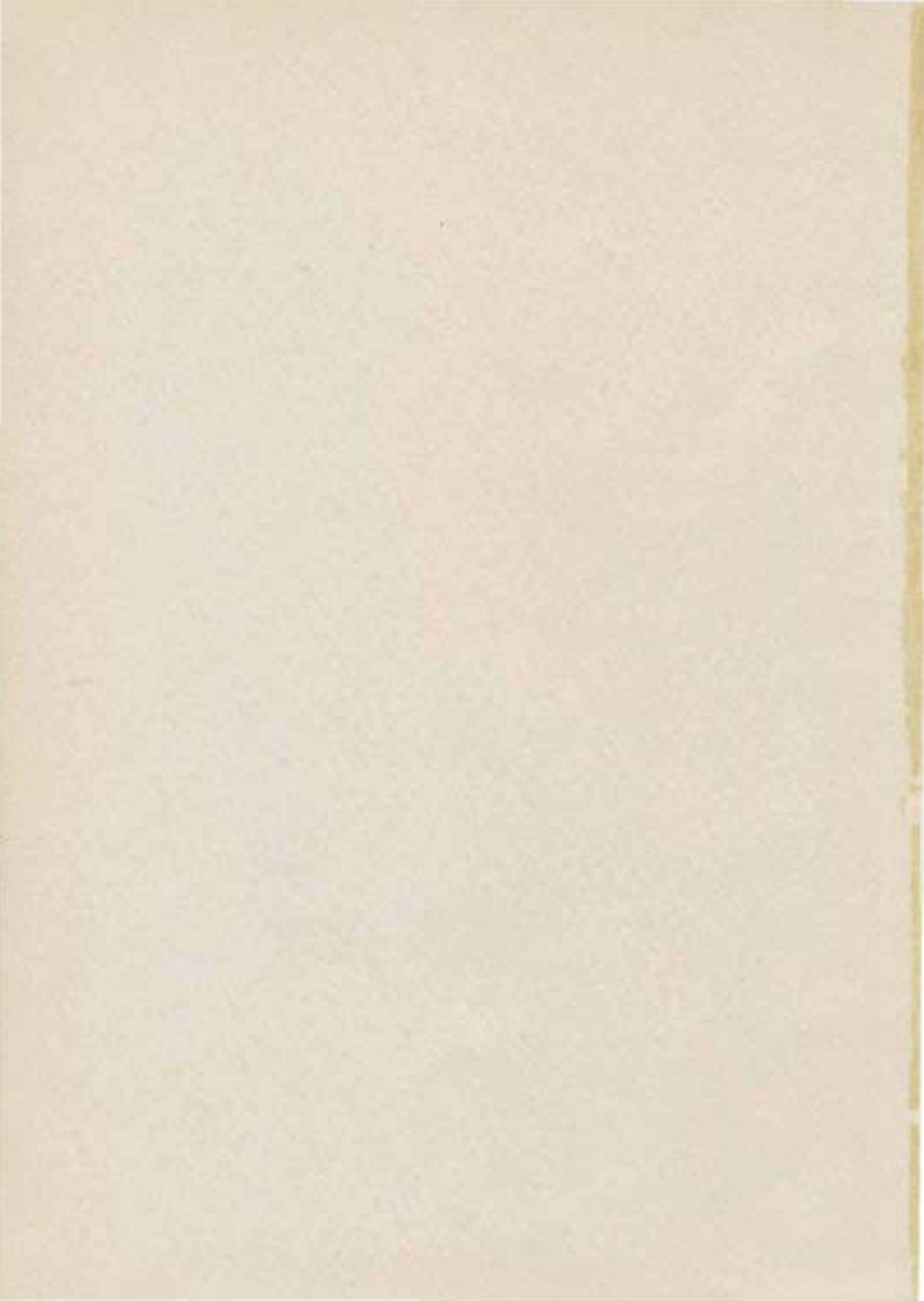
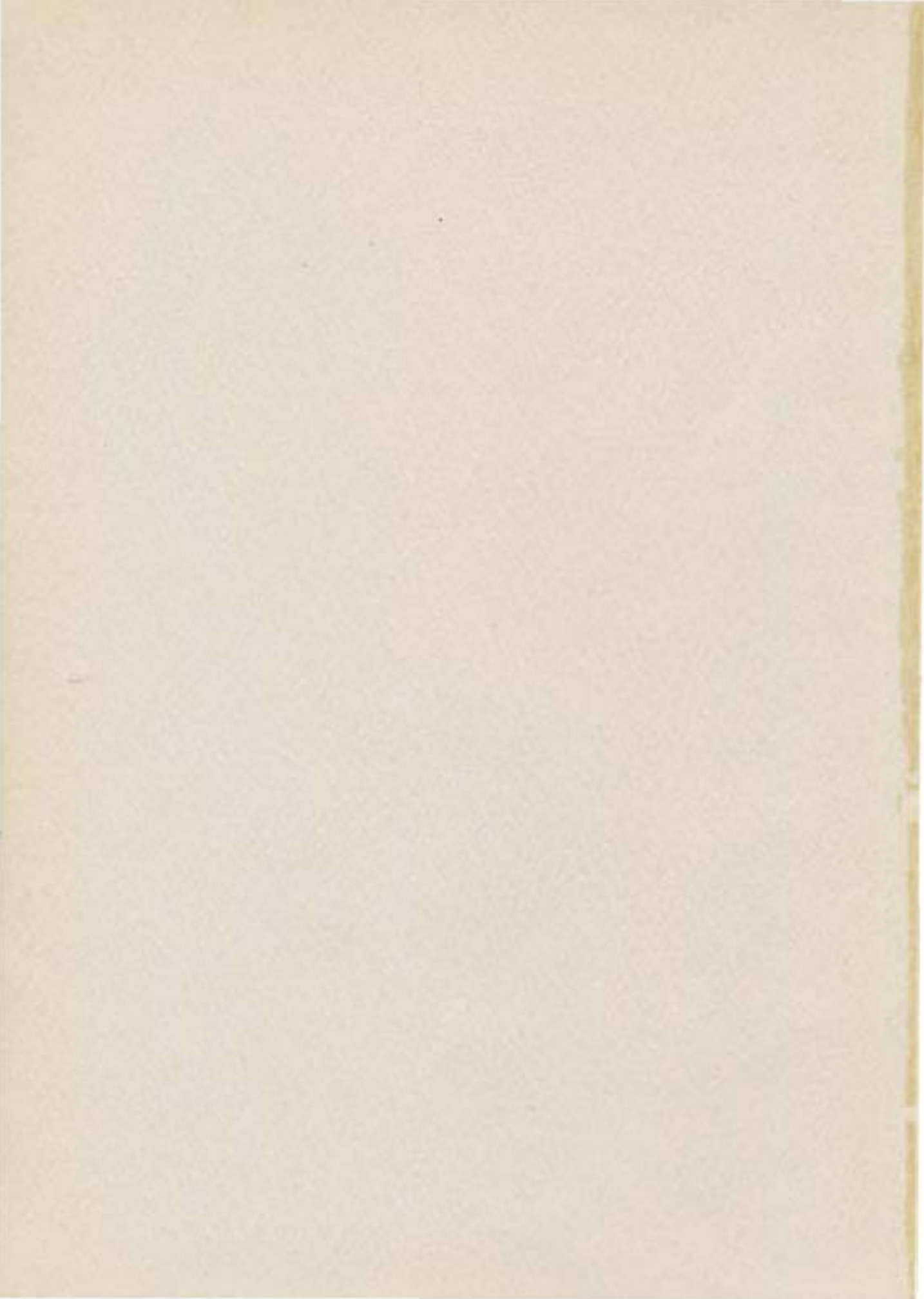


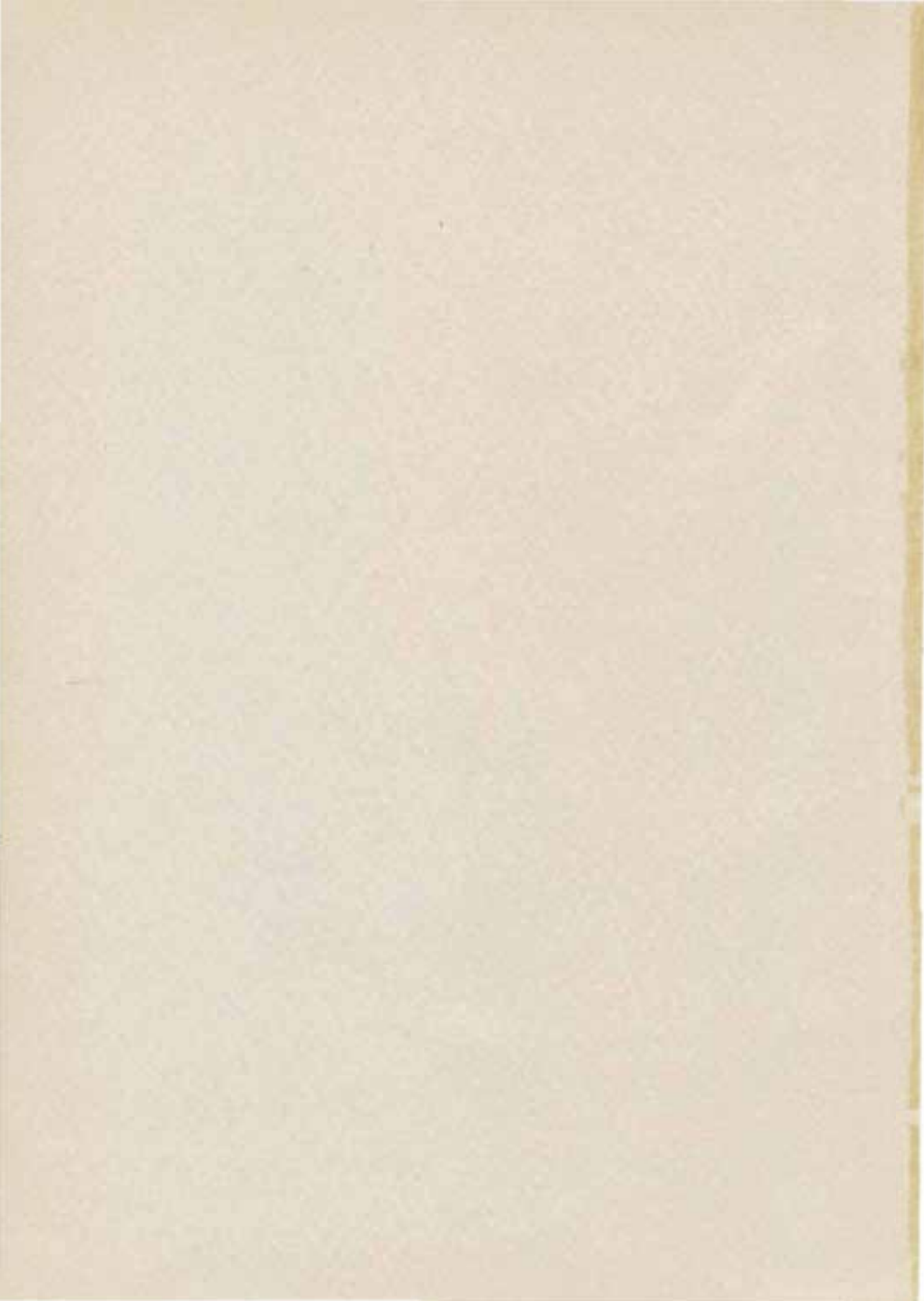
1947



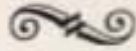
Saga







Ex Libris _____



P. L. C. Hymn

By Miss Mann

*North lofty trees and mountain grand,
A blessed place she firmly stands
Alma Mater P. L. C.
That she may grow in strength and name,
Live and rule without disdain
Till our hearts forever be
To Alma Mater P. L. C.*



THE
S A G A



Published by the Students of
Pacific Lutheran College
Parkland, Washington

Dedication

TO Pacific Lutheran College, now celebrating its Golden Jubilee year, we dedicate the SAGA of 1944. Through the fifty years since it first opened its door to students, Pacific Lutheran College has faithfully served its church and its country by training for them capable men and women imbued with the Christian ideal of a fuller and richer life. May this institution continue to serve the present with a vision of the future.



Administration

30290

President

Eastvold



PLC has hung up its sign: it is painted in the College colors, ebony and gold. Our motto remains unchanged: "Build for Character."

Because of our motto, we are indispensable to home, church, state and world. We stand at the very edge of infinite opportunities. We must work and think more in order to move on to greater things! Many college graduates have failed because they never learned that success is secreted in the sweat glands. We need more of "that oil" in order to save on common petroleum.

Edison once said, "We don't know even one billionth of one percent about anything." It is most discouraging to walk through a library where the wide awake student is reminded of all he does not know. Just the minute you get satisfied with what you know, the concrete has begun setting in your brain. The green tree grows, the dead post rots in the ground. Education is life, for it begins at the cradle and ends only at the grave. The wisest man at college is always a freshman, and continues so throughout life. The doorstep to the library of wisdom is a knowledge of your own ignorance. One might wish to know as much about something as a certain Jack thought he knew about everything. Be conscious of your own ignorance and you have made a great step toward knowledge.

The beginning of wisdom is the knowledge of God through faith in Jesus Christ. This begins with our birth in Christian baptism and continues in the school of the Holy Spirit. For those who believe, no explanation is necessary; for those who don't, none is possible.

Real and lasting character cannot be built without a God-given faith in Jesus Christ as God, Savior, Man Teacher, and Everlasting Friend. PLC aims at such character and at achieving the highest of intellectual culture as an American College.

Dr. S. G. Eastvold.



*Dean
Ronning*



If I were asked to describe Pacific Lutheran College in one sentence I think I would say, "Pacific Lutheran College is a Christian school where teachers take personal interest in students and where a family spirit prevails." It is not by accident that such an atmosphere characterizes our school. From the foundation of Pacific Lutheran College fifty years ago to the present moment we have believed in the power of the Gospel and in the effectiveness of personal touch in the building of character.

Founded and established by Rev. B. Harstad and Rev. O. Groensberg, developed and preserved by Prof. N. J. Hong, Rev. J. U. Xavier and Rev. O. J. Ordal, expanded by Dr. O. A. Tingelstad and Dr. P. E. Hauge, and now under the leadership of Dr. S. C. Eastvold, Pacific Lutheran College looks back upon a past rich in worthy accomplishments and forward to a future full of potentialities.

Ponder for a moment the responsibilities of our heritage. PLC is a merger of two schools and heir to six others which flourished for a period but were later closed, leaving the whole field to us. We are now the only surviving institution of our type on the entire Pacific Coast. What a challenge and what an opportunity!

Members of the faculty, students, and friends, we have a service to perform of no less importance than that of our fighting forces. If I were not convinced of this I would not be here, nor would I urge you to devote yourselves wholeheartedly to our common task. It is our responsibility as a Christian college to help build the foundations upon which our civilization rests. We shall do well, during this Golden Jubilee Year, to support Pacific Lutheran College financially, morally, and spiritually.

Dr. H. G. Ronning.

Faculty

ELVIN W. AELL teaches his high school classes quietly, efficiently, and thoughtfully, although students and associates say he is loved by all as he departs his and accommodations.



ALEXANDER V. ASHTON is known for his cheerful enthusiasm and interest in all around him. He is vitally concerned with his work as professor of biological sciences and continues to be an ardent student in his field.

DORA A. BERG is so successful in developing PLC efforts because she is so unfailingly patient and encouraging in every class that the students turn out fine work in spite of themselves.



GRACE E. BLOMQUIST makes an ideal class of women because she takes the group and individual conditions of the class seriously to heart. She is loved by all of the and filled with a Christian joy that makes it a pleasure to be in her company.

MABEL M. BILTS gives training and encouragement to PLC vocarists. Under her gentle and patient tutelage the timid voices gain confidence and the rough voices are ready smooth.



MICHEL N. FRANCK has won a lasting place in the affections of the PLC family members by his effervescent humor and charming accent. His interest in each collegiate is vital and fanighted, aimed to inculcate an intelligent, thoughtful attitude toward the world events.

RUTH J. FRANK who has already personal interest in bringing out the best in each of her students. She develops the journalists who edit our **MOORING MAST**, giving kindest encouragement to the humble beginners and using plenty of red pencil for the self-confident reporters.



CARL J. STROE and his cigar are a familiar sight on the PLC campus. It is his concern for all the party details that makes the annual choir trip a successful and glorious adventure.

OLAF M. JORDAHL instructs engineering classes after the day's work of the shop. He is one who is always ready to tackle a problem and usually succeeds in solving it.



KATHERINE M. JORDAHL is instructor of a class in Spanish, sole war-time survivor of the Romance languages at PLC. She is conscientious in giving her class an exact foundation.

GUNNAR J. MALMIN keeps the PLC family happy and inspired by the beautiful music rendered by the Choir of the West and orchestra under his direction. He is known to all for his radical personality and jokes, not for his, which go far in making the choir trip the merry occasions that they are.



ANNA M. NIELSEN is known to us all for her ever-pleasant smile and her ever-ready helping hand. As head of the education department, she is known to her cadet teachers to be a professor and adviser who gives the best to and expects the finest from her students and friends.

Members

CUMFORD O. OLSON gives each of his athletes this year the same kindly individual consideration and friendly counsel that he gave to his champion teams in years gone by. His truly words to build strong Christian minds in strong bodies.



JESSE P. PLUEGGER is a willing friend and counsellor to one and all. As professor of Christianity and philosophy, he makes his class lectures and chapel talks never-failing sources of inspirational and thought-provoking ideas.

ANDERS W. RAMSTAD is beloved by the PLC family because he has such a fine sympathy and understanding. He enters into the spirit of each class without losing respect, and introduces his students to the intricate mysteries of science and mathematics.



HERBERT R. RANSON graces his lectures with his own subtle humor and keen appreciation so that they cannot fail to inspire his audience of students. Quiet and unassuming, he is always ready to accommodate those who come to him.

W. D. KEITH REID has the buoyant outlook on life that is ever welcome in student circles. His dry humor, scintillating wit, and sophisticated appraisal are qualities much admired by all. He heads the commercial department.



GEO RENEAU captivates her audiences with delightful, yet scholarly talks that always perfectly suit the occasion. Being very sensitive to personalities, she knows how to reach each student in the kindest way.

WALTER C. SCHNACKENBERG prays applying psychology to everyday situations and personalities. As Dean of Men he is comrade and advisor to all the fellows. His musical talent is an object of awe and appreciation for many informal audiences in Old Main.



OLE A. STUEN makes a paternal error to the well-being of the members of his library staff. As head librarian and financial advisor to the college publications, he finds plenty of use for his sound business mind. He is recognized by all to be a true friend and an ardent teacher of Norwegian.

EDVIN TINGELSTAD has the interests of PLHS really at heart, being personally concerned with the welfare of each pupil. His rich sense of humor is often concealed behind a wall of psychological terms too high for the average collegeite.



GERTRUDE B. TINGELSTAD gives willing assistance to every information-seeker in our library, willing to search for hours for the exact obscure scrap of data needed to finish a term paper or report.

RHODA M. YOUNG puts our needs through a vigorous muscle-building program. Filled with a spontaneous interest in everyone and a keen enjoyment of all activities, she is always ready to participate in student social events.



KARL E. WEISS is acknowledged by all to be a "jolly guy." Many students find him patient and sympathetic to a student who fails to practice. His work is permeated by a rich and deep Christian philosophy.

Board of Trustees

To the Class of 1944:

The Board of Trustees salutes the class of 1944. Through many years we have had good reason to be proud of the graduates of PLC. We have appreciated your school spirit, your loyalty and your scholarship. Above all, it has pleased us to note that the spiritual things have been precious to you, and we wish for you, and we pray for you, that out in life's workaday world you may keep in remembrance and faith what your Alma Mater passed on to you as an heritage; and that in thus remembering and believing you may build your lives solidly upon the unaltering Truth of God.

Under much prayer and deep concern, the Board has sought to build toward a brighter and greater day for your Alma Mater. We are committed to the task of building a greater PLC. In the attainment of this objective, the class of 1944 will be called upon to play a vital role. We are confident that you will be glad to help us in this noble work. Speak well of PLC! Pray for her success, and support her generously with your gifts!

We tender to the president and faculty our appreciation for work well done. We greet the entire student body. We congratulate the SAGA staff upon the publishing of this fine annual.

God bless you all!

The Board of Trustees
H. L. Fox, Chairman



Rev. Frank M. Johnson, Mr. A. A. Mykland, Rev. E. C. Unert, Mr. H. F. Gagnall, Mr. George Krutts, Mr. Arno Brand, Dr. E. C. Carlroth, Rev. R. A. Ohlstedt, Rev. H. L. Fox, Rev. O. A. Schmidt, Dr. L. Ludwig, Rev. W. J. K. Fehr.

Alumni



REV. MILTON NESVIG

The Pacific Lutheran College Alumni Association is comprised of graduates and former students who have attended at least two semesters. This organization, as it exists today, dates back to 1920, when the alumni associations of PLA and Columbia College dissolved to form one unit when the two institutions merged.

This Golden Jubilee year has been an outstanding one for the alumni association. Quarterly publications, including two alumni editions of the *MOORING MAST*, have stimulated much interest among members. Irene Dahl Hageness '30, college alumni secretary and secretary to the registrar, has received many letters from alumni scattered all over the world. Many of these graduates have sent in their annual dues to make these

publications and the maintaining of a mailing list possible.

There are approximately twelve hundred members of the association at present, and about three hundred of them are serving our country in the armed forces.

There are two big events on the campus for the alumni each year—homecoming and the alumni reunion. Homecoming this year was held in connection with the inauguration of Dr. S. C. Eastvold as president of the college on Sunday, November 28.

Reunion was held on Sunday, February 20. The Rev. John Hopp '32 of Seattle preached at the morning worship in Trinity church in Parkland. In the afternoon the Choir of the West, assisted by the college orchestra, presented its annual concert. Following the concert the college was host to the graduates with an "open house" program, with all of the facilities of the school, including the dormitories, open for inspection.

In the evening a banquet was held in the college recreation room with the Rev. Milton Nesvig '35, president, in charge. "Through the Years" was the theme developed by three speakers, Edwin Tingelstad '09, Martha Hjermland Cederberg '26, and Fred Heany '38. They were followed by Dr. S. C. Eastvold, who gave a picture of the present and future of the college. Anna Mikelsen '33 sang two vocal solos, accompanied by Ruth Howard '32; and Lois May Morton '38, with Norma Preus Dahl '37 as accompanist, played two flute solos. Otis Grande '38 led the group in community singing. I'Lee Rod, president of the class of '44, spoke on behalf of her class, who were guests at the banquet and were accepted into membership in the Association.

Officers of the alumni association this past year are Milton Nesvig '35, president; Linka DeBerry '38, vice president; Lillian Gullixson '43, recording secretary; Virginia Jahr Strand '40, corresponding secretary; Ursula McDonald '43, treasurer; and Anna Marn Nielsen, faculty representative. Other members of the board are Joseph Hanson '35; Ovedia Hauge '38; Walter Goplerud '38; and Virginia Davis Senner '41. Irene Dahl Hageness '30 is the college alumni secretary.

Alumni representatives on the college board of trustees are Ludwig Larson '03 and Morris Ford '31. Elected to succeed Larson, whose term expires next summer, is H. L. J. Dahl '08. Also elected at reunion were six new members of the Association's board of trustees. They are Linka DeBerry '38, Carl Colton '26, Wilfred Jewell '40, Anna Marn Nielsen, faculty representative, Delmar Mortensen '32, and Gertrude Tingelstad '39.



Nestegard, C. Fynboe, Preus, C. Fosso, Ofstedal, Dean Ronning, Larsgaard, Rogen, Nienstedt, Morrow, Baglien. On the right, President Larsgaard.

Associated Student Body

A small but powerful student body found early in this school year that war does make a big difference on the campus. The male population was small and much in demand on all sides, with priority rights granted, of course, to the coeds. The girls, who of necessity were the moving force behind the activity program, proved themselves capable of responsibility and loyal in support.

John Larsgaard wielded the gavel at student body and Board of Control meetings in his own efficient and unassuming way. His fellow officers for the year were Priscilla Preus, vice president; Hjordis Rogen, secretary; John Baglien, treasurer; and Herb Nienstedt, advertising manager. They were aided in planning and carrying out the activities by the class representatives to the Student Board of Control, who were Catherine Morrow, senior; Corinne Fosso, junior; Ruth Nestegard (first semester) and Agnes Mykland (second semester), sophomores; Dorothea Ofstedal, freshman; and Carl Fynboe, high school. Faculty adviser was Dr. Herald G. Ronning, who added his sage opinions to the deliberations of the group.

Central aim of all the activities was the building of Christian character through the encouragement of participation in religious societies and through offering interesting educational and social programs. The group also worked for a better understanding between students and faculty members. They supported the Red Cross, the World Student Service fund, and the War Bond and Stamps sales.

Some of the outstanding functions of the year were the formal Christmas banquet in the college recreation room, student participation in the Inauguration, the traditional SAGA carnival, and the usual spring activities. In the Lyceum two series of concerts were sponsored, one presented by the Civic Music Association and the other by the Dormitory Auxiliary No. 2. Each student was allowed to attend one concert in each series free.

The all-school picnic officially, and happily, ended a fruitful year.



President Harstad. On the right, Harstad, Reese, Michalsen, Kuhn, Torvond, Miss Nielsen, Risa, Matten, Larsgaard, Sotern, Ludwig, Jurgerson.

Lutheran Student Association

The activities of the Lutheran Students' Association are controlled by a Co-ordinating Council of two representatives from each of the following clubs: the Lutheran Daughters of the Reformation, Mission Society, Fireside, and Campus Devotions. These eight students, together with a council reporter, the faculty adviser Miss Nielsen, and the student advisers—former presidents of the Association—meet regularly for the purpose of regulating the religious activities of the campus. All Lutheran students on the campus are members of the national organization, the Lutheran Students' Association of America.

The L. S. A. started an active year by sponsoring an outing at Lutherland on Halloween. PLCites were kept in great suspense about this "Spook Day" until three trucks carried them to the scene of activity. The afternoon and evening were spent in outdoor and indoor recreation, followed by a hot chili con carne supper. A singspiration was held around the fireplace, with late refreshments of cider and doughnuts.

The night before classes were adjourned for the Christmas holidays, many students took part in an L. S. A.-sponsored Service of Candles in the College Chapel. The story of Christ's birth, in relation to His death and resurrection, was told by Scripture, song, and candles. The octette furnished the music for the service.

Each semester, the University of Washington Luther Club (L.S.A.) exchanged a meeting with Pt.C. In spite of transportation difficulties, large groups of enthusiastic students shared in this exchange of Christian fellowship. Several representatives of the student body also attended the Divisional Conference of University Lutheran Church in Seattle. A chapel program was presented on Ash Wednesday. Highlighting the spring semester was a Religious Emphasis Week, during which all the students found great nourishment for their Christ-consecrated lives.

The co-ordinating council was headed by Isabel Harstad as president. Other officers were Joan Sotern, vice-president; Albert Kuhn, secretary-treasurer; Mildred Reese, council reporter; and Lois Ludwig and John Larsgaard, student advisers.



Soltman, Hellman, Reese, Harstad, Torvend.

Associated Women Students

The Associated Women Students completed a successful year under the leadership of its president, Mildred Reese. Working with her were Isabel Harstad, vice president; Marion Soltman, secretary; Thilda Hellman, treasurer; and Eunice Torvend, publicity manager. Miss Grace Blomquist lent a helping hand as faculty adviser.

Since the first and all important step in college life is getting acquainted with those around you, the AWS started the year by appointing a big sister from the upperclasswomen for each incoming Freshman girl. The first social function was a Sister tea at which the big sisters introduced and entertained the newcomers.

The coeds demonstrated the Christmas spirit by giving the first caroling party of the season. The admission fee was ten cents and a Christmas tree ornament. The ornaments and money were donated to the Red Cross to provide gifts and decorations for the servicemen's Christmas celebration at Fort Lewis.

Main event of the spring semester was the annual tea, given for girls from surrounding high schools who are interested in attending PLC and would like to know something about the people and activities on our campus.

During the last half of the year the girls showed their patriotic spirit by taking over the selling of war bonds and stamps to student body and faculty members. A booth was constructed for the weekly bond day and set up in the Main Hall each Wednesday. Helen Flustrom, assisted by Anne Anderson, Florence Reiman, and Bernice Kviveland, had charge of this important project. They also sponsored the bond booth at the SAGA carnival.

The aim of the AWS is to coordinate the women's activities and promote a feeling of fellowship among the various groups.



Mr. Lien, Mrs. Barofsky, Mr. Hinderlie, Helga Olson, Mrs. Wengen, Nelma Gulleson, Mrs. Engo, Miss Herstad, Miss Blomlie,

School Staff

Some of the busiest members of our PLC family are the people who comprise the school staff. These are the faithful workers who keep the daily routine of campus life for students and faculty members going smoothly. They are well-known to us all for their efficient work and kindly willingness to help.

Over in the library, where we ought to spend more time than we do, is Mrs. C. Barofsky, who has worked as Circulation Manager on a full-time basis since Mrs. Margery Wertman left in December.

Keeping the offices in Old Main in working order are Mrs. Joseph Engo, bookkeeper in the business office; Isobel Herstad, secretary to President Eastvold; Mrs. Olei Hogeness, secretary to our Dean and Registrar, Dr. Ronning; and Helen Blomlie, who took over the duties of Golden Jubilee secretary for the second semester.

Nelma Gulleson, and her assistants, Helga Olson and Mrs. Oscar Olson, have the advantage of commanding the easiest road to a student's heart. Three times a day the dormitory people can appreciate the culinary talents of these three cooks. Faculty and day students learned to acknowledge the superiority of our kitchen staff when they tasted the delicious meals served at various banquets during the school year.

Mrs. N. H. Wengen serves as college nurse. Since her arrival in the fall, a well-equipped hospital room has been established in the basement floor of Old Main.

The engineering department was headed during the first semester by the Rev. N. H. Wengen, who left in February to serve a congregation in southern Minnesota. He was succeeded by Mr. Oscar S. Hoyland.

Mr. S. Hinderlie is custodian, and Mr. Fadness is our night watchman. On November 1 Mr. John Lien came to serve full time as college carpenter.



Inauguration

The inauguration of Dr. S. C. Eastvold as PLC's seventh president began the celebration of our school's fiftieth year. The service, presided over by the Rev. H. L. Foss, Pacific District president of the N.L.C.A., was held on November 28, 1943, and broadcast over radio stations KTBI in Tacoma and KRSC in Seattle.

The capacity crowd which attended was impressed with the academic procession, sincere greetings from representatives of other institutions in the state, beautiful music by the "Choir of the West" and the orchestra, and stirring addresses.

Dr. L. Ludwig, president of the Northwest District of the American Lutheran Church, spoke on "The Lutheran Church of the Pacific Northwest in the Making." Dr. P. O. Bursell, president of the Augustana Synod, spoke on the subject, "Nurseries in the Kingdom." "The Imperatives of Democracy" was the theme of Dr. Eastvold's inaugural address. Dr. J. A. Aasgaard, president of the Norwegian Lutheran Church of America, performed the ceremony of installation.



Classes

The Last

EUGENE SIDNEY ANDERSON
Three Year Graduate

Chair of the West—1, 2, 3, Band—1,
Orchestra—1.



BETTY BLANCHES BATH
Three Year Graduate

W. A. A.—1, 2, Alpha Psi Omega—3,
Am. Business Manager of "Meeting
Man"—4, Business Manager of "Meo-
ing Man"—2, Business Manager of
"Sage"—3, All-School Play—1.



JENNY BERTINA BARDON
B. A. in Education

Chair of the West—1, 2, 3, Lutheran
Daughters of the Reformation, Mission
Society.



BERNICE MARIE BERNHARTSON
Three Year Graduate

W.A.A.—1, 2, 3, W.A.A. Council—2, 3,
W.A.A. Advertising Manager—2, Club
at Chgo.—1.



FERN HARRIOT ERICKSON
Three Year Graduate

W.A.A.—1, 2, 3, W.A.A. Treasurer—3,
L.D.R.—1, 2, 3, Class Vice President—3.



DOROTHY GERTRUDE BLANDAU
B. A. in Liberal Arts

Constitution Devotions—1, 2, 3, 4, Mission
Society—3, Club Treasurer—4.



CORINNE SOPHIA FOSSO
Three Year Graduate

D. P. K. Council Member—2, 3, Linea
Society—2, Representative to Board of
Control—3.



OLE HANSEN
B. A. in Education

Tennis—2, 3, Vice President of A.S.B.
—3, Representative to Board of Con-
trol—2.



DOROTHY OLSEN HARROUN
B. A. in Education

Transfer from San Diego State College.



MARGARET JEAN HILL
Three Year Graduate

All-School Plays—1, 2, Secretary of
D.R.G.—3, W.A.A.—1, 2, 3, Vice
President of W.A.A.—3, Choir Lead-
er—1.



WALTRA SOSE MOENSHAN
Three Year Graduate

Band—1, Chair of the West—1, 2, 3,
Orchestra—3, "Mission Man" Report-
er—1, "Sage" Staff—3.



ARTHE IDNE JOHNSON
Three Year Graduate

D.R.G. Cabinet Member—2, Ski Club
—1, 2, Advertising Staff of "Meeting
Man"—3.



JOHN OLAF LARSGAARD
B. A. in Liberal Arts

Chair of the West—1, 2, 3, 4, Boys
Quartet—1, 2, Mixed Quartet—1, 2,
"Who's Who"—3, 4, President of L.S.A.
Council—3, Linea Society—1, 2, 3,
Tennis—2, A.S.B. President—4.



RHODA MAE LEE
B. A. in Education

Chair of the West—2, 3, 4, Secretary
of W. A. A.—3, Linea Society—1, 2, 3,
President of L.D.R.—4, Homecoming
Queen—3, May Day Attendant—2, 3,
"Sage" Business Staff—3, L.S.A. Repre-
sentative—2, Secretary of Mission So-
ciety—2, Vice President of Fireside—2.



Roundup

LOIS KATHERINE LUDWIG
B. A. in Education

Treasurer of A.W.S.—3, Chair of the West—1, 2, 3, 4, President of D.P.K.—4, Line Society—1, 2, 3, President of L.S.A.—3, L.S.A. Council Member—1, 2, 3, *Morning Mast* Staff—3, "Saga" Editorial Staff—1, W.A.A.—2, 3, W.A.A. Cabinet—3.



VIRGINIA LENORE MICHELSEN
Three Year Graduate

Secretary of Finance—2, W.A.A.—1, 2, 3, W.A.A. Council—2, "Morning Mast" Staff—2, L.S.A. Council—1, "Saga" Business Staff—3, D.P.K. Council—3.

CATHERINE ANN MORROW
B. A. in Liberal Arts

Alpha Psi Omega—4, Vice President of Finance—1, All-College Play—3, 4, W.A.A.—4, "Who's Who"—4, "Saga" Activity Editor—3, "Saga" Assistant Editor—4.



ANNE MARIE NELSON
Three Year Graduate

W.A.A.—1, 2, 3, Alpha Psi Omega—2, 3, May Day Attendant—2, Line Society—3, Vice President of D.P.K.—3, Class Secretary—President—2, 3, All-School Play—7, Chair of the West—2.

CARRIE MAE PERSON
B. A. in Education

Recording Secretary of D.R.G.—1, W.A.A.—1, 2, 3, 4, Vice President of W.A.A.—3, President of W.A.A.—4, Line Society—3, 4, Yell Queen—2, Representative to Board of Control—1, "Saga" Staff—3, "Morning Mast" Business Manager—4, Chair of the West—4, "Who's Who"—4.



MARY MADGE PERSHON
Three Year Graduate

Girls Section—1, Vice President of Comm. Org.—2, D.R.G. Cabinet Member—1, Chair of the West—1, 2, 3, W.A.A.—1.

AJICE LOUISE FRAYN
B. A. in Education

Vice President of Green Club—1, Line Society—2, 3, Alpha Psi Omega—2, 3, 4, Treasurer of D.R.G.—2, President of I.H.C.—4, W.A.A. Council—1, 2, 3, 4, President of W.A.A.—3, "Saga" Staff—1, "Morning Mast" Business Assistant—4, "Who's Who"—4.



PRISCILLA FREUS
B. A. in Liberal Arts

"Morning Mast" Staff—1, 2, "Saga" Staff—1, 2, President of Gormus Club—1, Cheer Leader—1, Chair of the West—1, 2, 4, Secretary of Choir—2, 3, A.W.S. Council—2, A.S.B. Social Chairman—2, President of Sps Club—2, D.R.G. Council—2, Vice President of A.S.B.—4, "Who's Who"—4.

MILDRED REESE
B. A. in Education

"Morning Mast" Staff—1, 4, "Morning Mast" Associate Editor—2, "Morning Mast" Editor—1, "Saga" Editor—1, Secretary of A.W.S.—3, President of A.W.S.—4, "Who's Who"—3, 4, All-School Play—4, Alpha Psi Omega—4.



ROBENCE LOUISE REMAN
B. A. in Education

Vice President of D.R.G.—3, W.A.A.—1, *Comoro Club*—2.

FLEE RUD
B. A. in Education

"Saga" Staff—1, 4, May Day Attendant—3, Alpha Psi Omega—2, 3, 4, All-College Play—3, President of Alpha Psi Omega—4, Director of Oas Act Play—2, Director of All-School Play—4, Class President—4, Assistant Director of All-School Play—1.



CARRIE VIRGINIA SEABURG
Three Year Graduate

W.A.A.—1, 2, 3, Line Society—2, "Saga" Staff—1, All-College Play Prop. Com.—1, 2, 3.

CHARLOTTE CHRISTINE SWANSON
B. A. in Education

"Morning Mast" Staff—1, 2, "Morning Mast" Associate Editor—3, "Saga" Staff—1, 2, "Who's Who"—3, President of Finance—2, President of Mission Society—2.



ALBEN HARRIS WATTEN
B. A. in Liberal Arts

Chair of the West—1, 2, President of Choir—3, All-College Play—1, Alpha Psi Omega—2, 4, Tennis Team—1, 2, *Map Record*



Blondau, Harsted, Reese. On the right, President Rod.

Sophistication, Plus

Though those lines, "Give me some men who are stout-hearted men," may have been uppermost in the minds of the Senior class members last September, they resolutely cast aside such thoughts and set about nailing a record for achievement. As a first step they elected the following class officers: Isabel Harsted, president; Mildred Reese, vice-president; I'Leo Rod, secretary; Dorothy Blondau, treasurer; Cothaine Morrow, senior representative. When Isabel Harsted decided to become Dr. Eastvold's secretary, she resigned; and I'Leo Rod was elected to succeed her. Isobe then became class secretary.

Throughout their years at PLC it has been the boast of the members of this class that they have produced more presidents than any other class, including presidents of ASB for two years. All the activities—dramatic, musical, social, literary, and athletic—have had participants from the senior class. Their leadership in all the organizations has been acknowledged indispensable.

Since the September day in 1940 when the members of this class first climbed up the steps of Old Main and made the annual error of mistaking Dr. Ronning for a fellow Freshman, they have become integral parts of the PLC family. Although they may have learned the words of "I'm in Love With the Garbage Man's Daughter" more thoroughly than the list of the Kings of England, they leave our campus as better-equipped men and women than they were four years ago. Commencement Day will be a proud yet sad leave-taking that will bind them even closer to the heart of our Alma Mater.

Sophistication, Minus

Now being full-fledged upperclassmen, the Juniors took this added responsibility with dignity and seriously set about making themselves a definite asset to our college. To start the year out right they elected Gladys J. Andersen (now Mrs. Matzen) class president. Her fellow-officers were Fern Erickson, vice-president; Anne Nelson, secretary-treasurer; and Corinne Fosso, representative to the Board of Control.

The individual members of the class took an active part in all of the school activities throughout the year. Several were chosen for major roles in the all-school play, and others helped in its production. Many junior names were listed in the membership of the choir, orchestra, religious and social groups, honor roll, sports, and publications' staffs.

To help out in the teaching shortage caused by the war emergency, a large number of the education students in this class are graduating this May on War Emergency certificates. These are Eugene Anderson, Betty Bates, Bernice Bernhartzen, Fern Erickson, Corinne Fosso, Margaret Hill, Arlyne Johnson, Virginia Michelsen, Anne Nelson, Mary Petersen, Virginia Seiburg, and Welotta Hornshuh. Their absence next year will make the class much smaller, but they hope to return after the war to complete the work for their degrees.



C. Fosso, Nelson, F. Erickson, G. Matzen. On the left, 1st row: Kjesbu, Hornshuh, A. Johnson, M. Petersen, Balman, H. Thoren, Seiburg, Michelsen, Kuhn, E. Thoren, E. Anderson. 2nd row: Nelson, G. Matzen, C. Fosso, G. Birkestel, A. Birkestel, Hill, F. Erickson, Swanson, Funk, Baglien.



Hellman, Kaaland, Torvend, Nestegard, Nienstedt. On the left, 1st ROW: Hellen, Schock, Regen, Christenson, Flodstrom, Baird, Saltman, Hellman. 2nd ROW: Torvend, Severson, Melin, Nestegard, Nieman, Butler, Bolow, Herre, Burdick, Riss, Thorleifson. 3rd ROW: Baglien, Mykland, Kaaland, A. Steen, Jurgenson, Hawley, Nienstedt.

A Little Wiser

An experienced group of students appeared on the PLC campus in September ready to make their sophomore year a great success.

The biggest event sponsored by the class was the mixer in February, which took place in the remodeled gymnasium. In order to preserve the new gym floor and please the ration board, this was a "shoolow" mixer. Featured were prominent precision dancers and a famous piano duo from this talented and versatile class. A booth at the SAGA Carnival and other activities helped to make a successful sophomore year.

The members of the class were not lacking in school spirit. John Baglien served ably as editor of the MOORING MAST and as ASB treasurer. Herb Nienstedt and Hjordis Regen distinguished themselves and their class by serving as ASB publicity manager and secretary, respectively. Upholding the sophomore intelligence were honor roll students Agnes Mykland and Betty Hotten.

The leaders responsible for the enthusiastic class were Eunice Torvend, president; Alice Kaaland, vice-president; Thilda Hellman, secretary-treasurer; and Herb Nienstedt, sergeant-at-arms. Representative to the Board of Control was Ruth Nestegard for the first semester and Agnes Mykland, second.

The sophomore class's loss was the junior class's gain when John Baglien, Albert Kuhn, and Herb Nienstedt became juniors the second semester. This left an entirely feminine class, which adjusted itself to the male shortage and carried on for the duration of the school year.

With such a beginning this class looks with vision toward continued progress during its remaining PLC career.

'The Corn Is Green'

The greenest of the green, Kenneth Lobeda, was elected by his fellow Freshmen to lead them through their infant year at PLC into adult sophomorehood. The sedate upperclassmen watched their antics (call them growing pains) with bewilderment and wondered to what the younger generation was coming. They conducted these newcomers through the rigors of initiation in order to make them realize the sobriety of college life. But in the course of the year, the Fresh have succeeded in making themselves an integral part of our PLC family.

When first organizing, the class chose Vice President Vale Burger, Secretary Ruth Jensen, and Treasurer Wesley Hillman to aid Executive Lobeda. Uncle Sam, seeming to realize the merits of the Fresh manpower, took delight in calling their officers to the colors. Kenny and Vale, as well as Vale's successor, Ed Sandvig, had to leave school to take up a bigger job in uniform. In their absence Ruth Jensen has taken over the presidential duties, assisted by Vice President Wesley Hillman, Secretary Dorothy Rasmussen, Treasurer Earl Nordeng, and Representative to the Board of Control Dorothea Ofstedal.

Entering whole-heartedly into school activities, the class had many of its members in the choir, orchestra, clubs and on various committees. Fresh were chosen for several roles in "Ghost Wanted," school play. Varied talent was displayed at the annual Fresh Mixer. Something hilariously new in the way of entertainment on Fresh Day, entitled "The Corn Is Green," showed the upperclassmen that spirited antics were by no means dead.



1st ROW: R. Jensen, A. Anderson, Alchurst, Rolader, Hopp, Lusbba, Karnes, Velvick, Carlson, Munk, N. Jensen, 2nd ROW: G. Olson, Lynne, Brudie, C. Erickson, I. Johnson, Eilfsen, Fien, Neuser, Martin, Garber, J. Hauge, Museboe, Tove, Thorpe, 3rd ROW: J. Wangen, Hillman, Soine, Rasmussen, E. Foss, Hulbert, Luvvold, Henningson, H. Peterson, Ofstedal, Newton, Wallen, Lindsay, Bergsgaell, Reitz, Sandvig. On the right, R. Jensen, Hillman.

'Mairzy Doats'

This year, upon returning to the campus of PLC, old and new students alike went to bat for the glory and betterment of their high school. Those students who met the qualifications, particularly the boys, were readily welcomed into the Choir of the West. Others entered the college orchestra.

Another musical group worthy of praise was the high school Girls' Ensemble, which appeared in various concerts with the choir and sang frequently on the PLC radio broadcast.

The high school speech class gained prominence by producing their own radio program. A few students had outstanding parts in the all-school production, "Ghost Wanted."

Competing in many games with teams from the surrounding locality, the boys carried out a successful athletic program, principally in basketball. Besides having a good time, the fellows learned much about the fundamentals of basketball. By their earnest efforts the boys have earned the honor of wearing PLC letters.

The students who were elected to plan high school activities through the past year were Charles Billingsley, president; Dorothy Parrish, vice-president; Marjano Winblada, secretary-treasurer, and Karl Bachner, sergeant-at-arms. The representative to the Board of Control was Carl Fynboe.



1st ROW: Haworth, M. Lona, I. Lona, Conale, E. Fynboe. 2nd ROW: Bachner, Gardner, Wanham, Valdey, Pflueger, Boynton, Svinth, Draggoo, Mertens, Hall, Heddon, Crowell. 3rd ROW: Pihl, Nicholes, Enge, C. Billingsley, Webster, C. Fynboe, Gilje, Bohn, D. Billingsley. On the right, C. Billingsley, Winblada, Parrish, Bachner.



HIGH SCHOOL GRADUATES: 1st ROW: Karl Buchner, Edward Bergquist, Charles Bingham, Jarrod Enga. 2nd ROW: John Gual, Mary Ruth Long, Peter Pihl, Lester Stenell, Gerde Westerdale. No photos: Evelyn Berglund, Edwin Gault, Berghild Petrich, Carl Rydner, Maxwell Vetterli.

Pomp and Circumstance

"And Jesus increased in wisdom and stature, and in favor with God and men." This is summarized the personality development of the only perfect youth the world has known; thus is recorded the ideal and aim of the finest possible high school education.

That there has been real progress toward the attainment of such an ideal in the members of the high school class of 1944 is my sincere conviction. Therefore it has been an experience of genuine satisfaction to watch your progress, and to realize that you are on the road to a sound, well-rounded, and useful personality. May you continue to grow in wisdom, stature, and favor, may you honestly say that your Alma Mater nurtured you well toward that end. Then we who worked with you shall feel amply rewarded.

Principal Edwin Tingstedt.

The Wise Old Owl Said

Six coeds and one boy from the senior class were chosen by the faculty to represent PLC in the 1944 edition of WHO'S WHO IN AMERICAN UNIVERSITIES AND COLLEGES. Selections for this national honor were based upon scholarship, leadership in extra-curricular activities, character, and potential usefulness as citizens.

Chosen this year were Catherine Morrow, associate editor of the 1944 SAGA and senior representative to the Board of Control; Carrie Person, this year's president of the WAA and business manager of the MOORING MAST; Alice Pflaum, who is chief executive of the Delta Rho Gamma and assistant financier of the college paper; Priscilla Preus, vice-president of the Student Body; and Charlotte Swanson, the present associate editor of the MOORING MAST.

John Larsgaard and Mildred Reese were elected to have their biographies appear in WHO'S WHO last year while they were juniors and were again recommended and listed this year. John has been busy with his duties as president of the Student Body, as well as being active in religious and musical groups on the campus. Mildred has served as editor of the 1944 SAGA and as president of the Associated Women Students.

The faculty scholarship committee nominated these people, and they were subsequently elected by the entire faculty. WHO'S WHO has been published since 1935 in an attempt to give national recognition to deserving students in a free and impartial manner.



Person, Pflaum, Preus, Larsgaard, Morrow, Swanson, Reese.



Activities



UPPER LEFT: Baird, Schoch, Rolader, Hopp. UPPER RIGHT: Kuhn, Larsgaard, C. Fynboe, Sandvig.
 LOWER LEFT, 1st ROW: Martens, Bailey, Towe, I. Lono, M. Lono; 2nd ROW: Pflueger, E. Fynboe,
 Haworth. LOWER RIGHT: Norman, Rogan, Burzlaff, Flodstrom, Huseboe, R. Jensen.

'Neath Lofty Trees

Thinking that they "could make such beautiful music together" and not content with singing only in the Choir of the West, various choir members organized smaller groups, which sang at many school activities and over the radio. They were also in great demand to represent the school at outside functions in Tacoma and in Seattle.

The men's quartet consisted of Albart Kuhn, first tenor; John Larsgaard, second tenor; Carl Fynboe, first bass; and Ed Sandvig, second bass. Muriel Baird, first soprano; Francelle Schoch, second soprano; Agnes Rolader, first alto; and Miriam Hopp, second alto—all members of the girls' quartet—combined with the male quartet to sing in the annual Christmas concert.

Members of the girls' sextet were Ruth Jensen and Vedis Huseboe, first sopranos; Jeanette Burzlaff and Helen Flodstrom, second sopranos; and Hjordis Rogan and Anita Norman, altos.

The High School Girls' Ensemble—Elizabeth Fynboe, Mary Ruth Lono, Florence Haworth, Marilyn Pflueger, Charlene Martens, Ingrid Lono, Helen Ramstad, and Elizabeth Bailey—sang during the intermission of the Christmas concerts given at Trinity Lutheran church, Fort Lewis, and McChord Field.



1st ROW: Director Malmin, Soine, Towe, Lien, Hulbert, Schock, R. Jansen, Hupp, Rolander, Wallen, Lindsay, J. Hauge, Mykland, Manager Fynboe. 2nd ROW: Lee, Flodstrom, Matten, Norman, Rogen, Baird, Burslett, A. Severson, Harren, Wrigley, R. Fosso, Person. 3rd ROW: E. Thoren, Olson, Oftedal, Stuen, Nausar, Harsted, Soltman, Huseboe, Horshuk, Jurgerson, A. Anderson, Rasmussen, Ludwig. 4th ROW: E. Anderson, Nordeng, Beglien, Sandvig, L. Hauge, Vettars, Gaul, Reite, Fynboe, Larugaard, Asper, Kuhn, Nienstedt, Funk, Hillman, Wangen.

Praise To The Lord

"Persevere and Succeed" was the motto of the Choir of the West for the year 1943-44. In fact, the first question asked of Director Gunnar J. Malmin back in September was, "Will we have a choir or will we have to be content with a girls' glee club?" Fortunately, after an intensive campaign, enough boys were recruited to make a fine, well-balanced choir.

On November 28 the golden-robed singers, accompanied by the college orchestra, took part in one of the memorable events of the year, the inauguration of President S. C. Eastvold. This initial performance with the orchestra gave promise of new things to come in PLC's musical development.

Following the many appearances of the Christmas concert season, the choir members had a few weeks' breathing space before the heavy spring schedule. During this time the group had the misfortune to lose some of its most valuable men to the Armed Forces, but the coming of the second semester saw the male section bolstered with a few new voices.

For the annual tour Director Malmin conducted his songsters on a trek into Oregon. The orchestra traveled with the group and rendered several numbers jointly with the choir.

Soloists for various concerts throughout this year have been Hjordis Rogen and Anita Norman, altos; Marion Soltman and Isabel Harstad, sopranos; and Carl Fynboe, bass.

It may be said that the greatest amount of credit may be given to Director Malmin, whose untiring efforts were the main factor in the success of the choir. Business manager for the group has been Mr. C. S. Fynboe.



1st ROW: Dragoo, Saltman, Kuhn, Wrigley, Bailey, Mykland. 2nd ROW: Towe, Hornshuk, Schach, Reitz, Jurgenson, Nienstedt, Halbert, Baglien, Prof. Malmin.

Mellow and Melodic

"We now have a small symphony orchestra. In the near future we hope that the adjective 'small' will have disappeared entirely and that no one will think of placing the accent on the last two syllables of 'symphony'." These words were spoken by Director Malmin when the orchestra gave a concert before the student body during the chapel hour. When the concert was finished, everyone was sure that none but the proper accent is justified.

The initial concert was given to an unseen audience on October 21 over station KTBI. Music on hand from former years was used at this debut. The orchestra's success led to the purchase of new music to add to their repertoire and to their appearance each succeeding two weeks.

Their first formal performance was at the Inauguration on November 28 when they played the processional and led the hymns. For the first time Prof. Malmin experimented with a combination of orchestra and choir, presenting two numbers from the "Reformation Cantata." Later in the day these musicians played dinner music for the Homecoming buffet supper and informal reception.

Since the orchestra-choir was so well received, Director Malmin decided to use them on the annual choir trip to vary the program and to ease the load of the choir with its shortage of male voices. This was an easy task as all except two members of the orchestra sang in the choir. The orchestra accompanied the choir in four numbers and provided concert music for the intermissions.

This group also participated in the concert on February 20, Alumni Reunion Sunday.

The organization is maintained to give students practical experience in orchestral work and to acquaint them with the works of well-known composers. One of the members, Agnes Mykland, oboe player, was invited to play with the Puget Sound Symphony Orchestra.



Burzloff, Soltman, Brodland.

The Voice of P. L. C.

"This is Pacific Lutheran College's morning devotional period, brought to you directly from our studio on the college campus." With these words student announcers opened the daily 10:45 radio program over station KTBI. A new feature of PLC life, begun by Dr. Eastvold in August, 1943, this broadcast served to acquaint the radio audience with the work, ideals, organizations, and persons that make up our college.

A variety of programs was given through the year. On Mondays the students produced their own broadcast, with Marion Soltman and Paul Funk in charge. Friday was the concert hour under the direction of Prof. Malmin, and was considered one of the best features of each week. The faculty women presented the Saturday programs. Messages from various Lutheran churches of greater Tacoma made up the Sunday broadcasts. Short talks by various faculty members, along with musical numbers arranged by Prof. Malmin, made up the remaining programs.

Student announcers were Mildred Brodland, Jeanette Burzloff, and Marion Soltman. They received much valuable radio experience and enjoyed many interesting adventures through this work. Millie especially remembers the time that she interviewed Dick Langton and Hartman Hoff, former PLCites now in the Navy. She thought the program was running overtime and ended up eight minutes short. But, with Prof. Malmin's ability at the organ and some hasty script writing, the critical moments were filled. Jeanette thinks that it was most amusing the time that the piano tuner arrived in the middle of a broadcast.

All who had an opportunity to listen to the various broadcasts found them very enjoyable. Dr. Eastvold's plan to publicize the school by radio has been one of the best features introduced this year.



On the left, Director Rod, Funk, Rod, Bates, Reese, Pflaum, Morrow, Nelson, Nienstedt,

The World's a Stage

The outstanding activity this year for the Theta Pi Cast of Alpha Psi Omega was the sponsoring of the all-school play, "Ghost Wanted." I'Lee Rod, Cast Director of the group, was chosen to direct this dramatic production, with Dean Walter C. Schnackenberg as faculty adviser. Miss Grace Blomquist helped with the make-up effects.

Alpha Psi Omega has the honor of being the one national fraternity on our campus. Membership can be obtained only through the approval of the national organization, and election must be by unanimous vote of the members. At the beginning of this year I'Lee Rod, Cast Director; Anne Nelson, Cast Stage Manager; Alice Pflaum, Cast Business Manager; and Julian Mattern were the only remaining members.

Through their participation in the presentation of "Ghost Wanted," Paul Funk, Mildred Reese, Herbert Nienstedt, Catherine Morrow, and Betty Bates became eligible for membership.

Business manager for the play was Herbert Nienstedt. His staff included Mildred Brodland, tickets; Anita Norman, publicity; Hjordis Rogen, house; Thilde Hellman and Eunice Torvend, programs. Stage Manager Paul Funk had as his assistants Ted Reitz, John Baglen, Fern Erickson, and Cecelia Gardin.

Head of the wardrobe committee was Ruth Nestogard, with Anita Norman, Grace Birkedal, and Miriam Hopp as helpers. The set was in charge of Dorothy Niemon, assisted by Agnes Roleder and Dorothy Reimann. Virginia Seaburg, manager of properties, had Agnes Mykland and Lillian Thorsen as assistants.

Miss Grace Blomquist, who was faculty adviser for the make-up committee, supervised the work done by Marian Butler, Bernice Bernhartsen, Hjordis Rogen, Mildred Brodland, and Corinne Fosso.

Alpha Psi Omega's other activities for the year included the pledging and initiating of the new members and social meetings. Throughout the year the members have attended various plays presented by groups in Tacoma.

Ghost Wanted

"Ghost Wanted," Guernsey Le Pelley's mystery-comedy play in three acts, was presented on November 19, 1943, on the stage of the college gymnasium under the sponsorship of the Theta Xi Cast of the Alpha Psi Omega. It was the second student-produced drama in recent years, and was directed by Lee Rod, Cast Director of Alpha Psi Omega.

The action of the play took place at Ramshead Rock, the haunted home of the Stormgay family. Herbert Nienstedt gave an excellent performance as Hugo Bromley, who answers an advertisement for a ghost and finds himself more on the scared than on the scaring side of the situation. His friend and general manager, Jeffrey Hall, was played by Sargent Webster.

Romantic interest for the boys centered around the two pretty Stormgay girls, Gale and Ginger, portrayed by Betty Bates and Barbara Fixen. These girls had advertised for a ghost in order to prove to their grandmother, Granny Kate, who was enacted by Mildred Reese, that voodoo does not pay. Other members of the Ramshead Rock household were the foolish maid Troddy and the sniveling butler Hatcher, played by Miriam Hopp and Albert Kuhn, respectively.

Unexpectedly the Stormgays found themselves hostesses to a queer assortment of people, trapped on the island by the mysterious disappearance of the boats. These were Norman Jensen as Professor de Vallan, an authority on voodoo and zombies who later revealed himself to be an FBI agent; Catherine Morrow as his strange assistant, Madame Zolga; Carole Neuser as Azalea, the lobster woman who feared neither man nor ghost; Ruth Jensen as Nora Vane, social worker extraordinary; and Carl Fynboe as Sheriff Bradshaw.

The chill of the evening came when Lester Storassli made his gruesome appearances as the monster. Through the detective work of Jeff, it was found that Ramshead Rock was the headquarters for a foreign spy ring, headed by the clever Hatcher. Just as he was about to make his escape and destroy the island, he was tricked and trapped by his own monster device on the person of Hugo. The play ended with Sheriff Bradshaw in full command of the Nazis and Granny Kate explaining that she had never believed in voodoo or any such nonsense.



FIRST ROW: Hopp, B. Bates, Fixen, Neuser, Morrow, R. Jensen, Reese. SECOND ROW: Nienstedt, Kuhn, Webster, Storassli, N. Jensen, C. Fynboe.



Editorial Staff: Reits, A. Stuen, Brudis, Frivold, Reese. Editor, John Baglien, Associate Editor, Charlotte Swanson. Business Staff: FIRST ROW: Nieman, Butler, A. Johnson. SECOND ROW: Gardlin, A. Stuen, Prof. Stuen, A. Birkestol, G. Birkestol. Business Manager, Carrie Person. Associate Business Manager, Alice Pflaum.

The Fourth Estate

This year the MOORING MAST has served a twofold purpose as morale booster, both on the home and on the war fronts. With nickels and dimes contributed by the students and faculty, the paper was sent to PLC servicemen all over the world. More copies were mailed out than were used at home. Mrs. Franck, editorial adviser, received letters of appreciation from every climate.

Editor John Baglien, hailing from the Sophomore class, deserves the credit for making the paper the outstanding success it has been. Working with him was Charlotte Swanson, associate editor.

Keeping the finances in order was Business Manager Carrie Person. Carrie, with assistance from Alice Pflaum, kept the ad-chasers on their toes and in good form.

Also on the business staff were Dorothy Nieman, business secretary; Cecilia Gardlin, circulation; and Annabelle and Grace Birkestol, in charge of servicemen's circulation and exchange, respectively. Mr. Stuen acted as adviser to this staff.

Due to a lack of reporters, the Journalism class was the mainstay of the editorial staff. They were an enthusiastic group and saw to it that this year's MOORING MASTS were written with careful application of journalistic theory, as expounded by Mrs. Franck.



Edgess, Mildred Reese, Assistant Editor, Catherine Morrow, Editorial Staff; A. Jensen, Rod Rolager, Hatlen, Mykland, Dr. Ranson, Business Manager, Betty Bates, Associate Business Manager, Edwin Sandvig, Business Staff. **FIRST ROW:** Brodland, Nestegard, Hopp, Jurgerson. **SECOND ROW:** Soberg, Wallen, Soeder, Funk, Rasmussen. **THIRD ROW:** Rod, Nieman, Prof. Doris Rolde, Ivar Pihl, Torvend, Michelsen, Satern, Hallman.

Annual Headache

The SAGA staff, captained by Editor Mildred Reese and Business Manager Betty Bates, was faced this year with an acute shortage of material and labor and the necessity of operating on an extremely limited budget. In striving to maintain the high standard of our yearbooks many people have given of their time and effort to this SAGA.

Indispensable was the work of Catherine Morrow, assistant editor, who was always ready to do more than her share of the work. Betty's associate business manager was Edwin Sandvig, with active assistance from Mildred Brodland, secretary; Dorothy Rasmussen, advertising head; and Paul Funk, circulation manager.

Agnes Mykland and Betty Hatlen were in charge of writeups, and I'Lee Rod helped with makeup. The snapshot contest was handled by Ruth Jensen. Mary Peterson served in the capacity of art editor. Herb Nierstedt had charge of the annual SAGA carnival, which was an outstanding success.

Ad solicitors included Dorothy Nieman, Agnes Roleder, Miriam Hopp, Thilda Hellman, Eunice Torvend, and Ruth Wallen. Class solicitors on the financial staff were as follows: senior, I'Lee Rod; junior, Virginia Seaburg and Virginia Michelsen; sophomore, Doris Jurgerson and Joan Satern; freshman, Ted Reitz and Gerry Olson; high school, Ivar Pihl and Mickey Crowell.

Faculty advisers were Miss Berg, Dr. Ranson, and Prof. Stuen.

Delta Rho Gamma

Delta Rho Gamma is not a sleepy organization, as is proved by its numerous activities during this year. Starting off with a bang, the regular members outdid themselves in the informal conducting of all the new day girls at the Fresh Initiation. The annual banquet, which combined the installation of officers and formal initiation of new members, was held on October 6. Mrs. S. C. Gethvold, Miss Grace Blomquist, and Mrs. J. Engo were honor guests.

The Christmas party, a potluck supper, was concluded by the members presenting the day room with gifts.

During the year two ice skating parties were sponsored at the local Lake-wood arena. The first party's receipts were donated to the SAGA fund. An unusual touch was added to this party by the presentation of a program by amateur skaters during the intermission.

The sorority's project of the year was the redecoration of the day room. The girls did the work themselves, and celebrated with a banquet when it was completed.

As a finishing touch to the year's activities a house party was held at one of the local beaches.

Officers of this five-year organization have been Alce Pflaum, president; Florence Reiman, vice-president; Muriel Baird, corresponding secretary; Carrie Person, recording secretary; and Betty Christenson, treasurer. Representing the various classes were Priscilla Preus, seniors; Nora Kjesbu, juniors; Helen Rodstrom, sophomores; Amy Jean Muns, freshmen; and Ingrid Lana, high school.



CABINET, FIRST ROW: Kjesbu, Christenson, Person, SECOND ROW: Reiman, Baird, Muns, Preus, Rodstrom, Pflaum, FIRST ROW: Kjesbu, Bailey, Brodland, Baird, Christenson, Rodstrom, Soltman, W. Hornshuk, Karnas, Loebke, E. Thoren, Person, SECOND ROW: M. Peterson, Reiman, A. Johnson, Burlaff, Bernhartsen, Hill, Stoen, Velsrick, Kittelson, Warren, Akehurst, Preus, Pflaum, THIRD ROW: L. M. Johnson, Wisblade, Pflueger, E. Fynboe, Morgan, A. Severson, Martens, Muns, Carlson, J. Hauge, Towe.



FIRST ROW: Rod, Hulbert, Ruider, Hopp, Hawley, C. Fosso, Ludwig, R. Fosso, Neuser, Berma, G. Birkestol, Schoch. SECOND ROW: Diehm, Veldey, Cambas, Rogan, Wrigley, Risa, Torvand, A. Anderson, Hallen, Wallen, Lee, Morrow, Michelsen Melin. THIRD ROW: Nieman, Below, Bell, J. Pederson, Svieth, Thorleifson, Satern, Huseboe, C. Erickson, I. Johnson, Olson, Lynna, Brudie, J. Jensen, Seaburg, Hellman, Newton. FOURTH ROW: Reaso, Crowell, Nestegard, Soise, H. Peterson, Rasmussen, Henningsen, Elefson, Lovvold, Haggam, Haddon, Draggoo, A. Birkestol, Kaaland, Nelson, K. Erickson, Ofstedal, Jurgerson, Mykland, Swanson, Bates. Officers: Jurgerson, Herstad, Nelson, Ludwig.

Delta Phi Kappa

With the reoccupation of the dormitory by PLC's returning troopers and the arrival of new recruits to reinforce the lines, Delta Phi Kappans launched a campaign on all fronts to make the school year a memorable one. A "get acquainted" pajama party, the first event of the season, was held about the reception room fireplace to welcome all returning and new coeds.

On November 13 Delta Phi staged a party for about thirty soldiers in the college gym. Servicemen and dormites, alike, had a wonderful time frolicking the evening away.

To bring the spirit of Christmas to Old Main, the girls joined forces with the dormitory men in early December and spent an evening adorning the campus buildings in holiday trimmings.

One project of the year was the redecoration of the fudge kitchen under the direction of Carolyn Hawley. From ceiling to floor, the room received a fresh coat of paint, while the addition of fluffy curtains and the replenishing of the supply of dishes also helped to make an enjoyable place for after-study "snacks."

Climaxing the second semester was the Delta Phi-managed food booth for the SAGA carnival. Glimpses of "a little bit of Norway"—bright peasant aprons and the lutefisk-lefsa type of menu—added a lot of color to this annual gala occasion.

At the helm of the group was capable Lois Ludwig. Her immediate cohorts were Anne Nelson, vice-president; Isabel Herstad, secretary; Doris Jurgerson, treasurer, and Thilda Hellman, firechief. The activities of the social chairman were divided between Gladys Andersen (now Mrs. Matzen), first semester, and Catherine Morrow, second. Council members were Ruth Jensen, Joan Satern, Virginia Michelsen, and Rhoda Lee, first session; and Carol Elefson, Carolyn Hawley, Corinne Fosso, and Lee Rod, second.



S. P. O., FIRST ROW: Hillman, Thorpe, N. Jensen, Paria, E. Anderson, SECOND ROW: Gaul, Storvick, C. Fynboe, L. Hauge, Hansen, Lillas, D. B. U., FIRST ROW: Funk, Bachsen, Kuhn, Webster, Sandvig, SECOND ROW: L. Johnson, Nicholas, Dilatash, Baglien, FIN. THIRD ROW: C. Billingsley, Gilje, Enga, Lonsgaard, Bergsagel, Reitz, Niensfeldt.

The Vanishing Race

Operating as a ten-room affair on the second floor, the Boys' Dorm Union maintained one of the smallest organizations in its history. The group was active in campus events and held two banquets during the year. Evening devotions were instituted and successfully carried on each evening. The DBU sponsored a booth at the SAGA carnival.

Officers elected for the fall semester were Albert Kuhn, president; Charles Billingsley, vice-president; Edwin Sandvig, secretary-treasurer; Al Nicholas, sergeant-at-arms; and Paul Funk, fire chief, air raid warden, and proctor. Their successors in the spring session were John Baglien, president; Charles Billingsley, vice-president; Paul Funk, secretary-treasurer; Albert Kuhn, proctor; and Ed Bergsagel, fire chief.

All the boys at PLC not living in the college dormitory constitute the Day Boys' Fraternity. From as near as Portland and Tacoma and as far as Texas and Minnesota, these boys come to make this organization one of friendship and fun that will long be remembered.

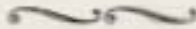
Since initiation day, when the twenty-four new members made their debut in front of the student body in chapel many have joined the armed services.

As most of the boys have either full or part-time jobs away from school the aim of the fraternity has been to make these students who live at home better acquainted with the school social life and our faculty.

Officers are Fred Nordvik, president; Dallas Martin, vice-president; Carl Fynboe, secretary; Larry Hauge, treasurer; Jack Gaul, advertising and business manager; Maxwell Vinters, sergeant-at-arms. Dr. Ronning is faculty advisor, and Dr. Pflueger spiritual counsellor.



FIRST ROW: R. Jensen, Matten, Jurgerson, Selow, Butler, Lien, Flodstrom, Baird, Lovvold, Mykland, Kaaland, F. Eriksen, Nelson. SECOND ROW: A. Anderson, Torvund, Rogan, J. Hauge, I. Johnson, G. Birkestol, A. Severson, Stuen, Preus, Kjesbu, Thorleifson, Michelsen, Lee. THIRD ROW: Wangen, Larsgaard, Kuhn, Prof. Stuen, N. Jensen, Thorpa.



Kan Du Snakke Norsk?

The Vikings have been one of the active clubs on the campus this year. Membership is limited to students who have a knowledge of, or who have taken, some Scandinavian language. Doris Jurgerson is president, with Joe Wangen as vice-president; Agnes Mykland, secretary; and Janet Hauge, treasurer. Prof. Stuen is technical adviser.

The first event of the year was a Christmas party in the Day room beneath the chapel. Norwegian Christmas carols were sung, games were played, and the ever-important refreshments were served. Dean and Mrs. Schnackenberg and Miss Tingelstad were invited guests.

The Vikings broadcast a Christmas program in Norwegian during the Yule season. Carols that had been learned in the two Norse classes were sung, and Ole Hansen gave a speech in Norse. Another broadcast was presented in the spring.

The big spring picnic was the main event of the year. Outdoor competitive sports were played, with rewards following in the form of all the food one wanted to eat.

Male membership in the club was small due to Uncle Sam's urgent need for men in his armed forces, but the group carried on to show again that the Scandinavians always come through despite handicaps.



FIRST ROW: Sumner, Rapp, Rolander, Scholten, Ofstedal, Olson, & Jansen. Mikkelson, C. Frisvold, & Jansen. LINDSEY. SECOND ROW: Langgaard, Jurgerson, Mykland, Mattson, A. Anderson, Thorleifsen, Melin, & Johnson. Seeborg, Marjorie Seim, Brude, Wallen, Nienstedt. THIRD ROW: Funk, Rapp, Rapp, Seeborg, Funk.

Serving

Fireside members meet every Sunday evening to enjoy informal devotional gatherings in the Reception room. Student and faculty speakers and singings composed the various programs. As in previous years the group undertook the task of buying and lighting the candles in the chapel through the school year.

Officers in the fall were Herb Nienstedt, president; Agnes Mykland, vice-president; and Dorothea Ofstedal, secretary-treasurer. They were succeeded for the spring semester by Ed Sandvig, president; Agnes Roleder, vice-president; and Barbara Newton, secretary-treasurer. When Ed left for the armed forces, Agnes filled his position, and Anna Anderson became vice-president.

Mission Society has had an active and fruitful year, carrying out several worthwhile projects. Under the supervision of the National Lutheran Council, the group canvassed the Lincoln Heights Housing project for the purpose of establishing a Sunday school and church service in that area. Several members also volunteered to teach Sunday school classes. The Lenten Season found the group sponsoring a "March of Pennies" drive, with proceeds going to the support of a student in Madagascar.

Officers the first semester were Paul Funk, president; Alice Brudie, vice-president; and Gerry Olson, secretary-treasurer. For the second term Paul was re-elected president and was aided by Vice President Ted Reitz and Secretary-Treasurer Dorothy Rasmussen. Representatives to the LSA council were Joan Satern and Eunice Torvend.



FIRST ROW: Mykland, Paul Funk, Seeborg, Langgaard, Rapp, Mattson, & Seim. Olson, C. Frisvold, & Jansen. SECOND ROW: Rapp, Rolander, Marjorie Seim, Jurgerson, Mattson, A. Anderson, Torvend, Herb, C. Frisvold, Olson, Lynn, Rapp. THIRD ROW: Rapp, Rasmussen, Lindsey, Brude, Ofstedal, Seeborg, Sumner, Rapp, Wallen, & Johnson, Rapp, G. Birkeveit.

FIRST ROW: Kjesbu, Wright, Risa.
 SECOND ROW: Baird, Swanson,
 Lynn, Erickson, Hornshah, G. Erick-
 son. THIRD ROW: Torvond, Nettle,
 L. Johnson, Jorgensen, Olson.
 FOURTH ROW: Phil, Samberg, Lyle,
 and E. Anderson.



Our Lord

The Campus Devotional group, which meets every Wednesday noon in the reception room, seeks to further religious activities on the campus. Those holding offices for this year are Nora Kjesbu, president; Jeanette Burzlaff, vice-president; Geraldine Olson, secretary-treasurer; Doris Jurgerson and Nellie Risa, LSA representatives. Dr. A. V. Arlton is faculty adviser.

The Lutheran Daughters of the Reformation meet monthly in the faculty homes. Their purpose is the promotion of Christian fellowship among the women students of the college. Projects of the LDR are sending Christmas gifts to the Parkland Children's Home in Everett and assisting in the support of a mission in Shishmaref, Alaska. The Mothers' tea is an annual event.

LDR officers are Rhoda Lee, president; Agnes Mykland, vice-president; Anita Stuen, secretary; Eunice Torvend, treasurer; Ruth Wallen, historian; Betty Hatlen and Virginia Michelsen, LSA representatives. The adviser is Mrs. Carl Fynboe.



FIRST ROW: E. Fynboe, Newton, C. Erickson, Wallen, Lindsay, Kjesbu, Risa, R. Jensen, Lee, Olson, Lynne, L. Johnson. SECOND ROW: Jorgensen, Elfsen, G. Erickson, Hagg, Kaleden, Nilman, Rogan, Salern, A. Anderson, Torvond, Helen, Michtson, S. Johnson, Helen, C. Fenn, Mykland. THIRD ROW: Moog, Brude, Olnedal, A. Litalen, Doris, Rasmussen, Seim, J. Houge, Jean, Jodberg, Swanson, Hombaa, Marie, P. A. Morrow, Rona.



Coach Olson. FIRST ROW: Eggle, Pitt, Engo. SECOND ROW: L. Hauge, C. Fynboe, Storoesli, Webster.

Maple Polishing

Keeping alive the seed of PLC'S sport program, the Lute war-time basketball squad played an eleven-game schedule and emerged the victor in seven hits during the 1943-44 season. Coach Cliff Olson built his squad from high school and college players who met for practice only once each week.

After a couple of workouts, the Gladiators took on the second strongest team of the McCord Field league on January 17 and learned a few lessons at the expense of a 47-36 defeat. The game, the first of a series with service quintets, was played on the refinished floor of the college gym. The number one team of McCord downed the locals by a score of 37-19 on the college maples January 24.

In their third game, the Lutes were conquered by a fast and tough opponent, the Tacoma Coast Guard, by 29-25 on February 5. In their initial win of the season, the Gladiators downed the guards from the American Lake Hospital, 45-34, February 7. Trinity Lutheran basketball squad, leaders in the Tacoma Church League, tipped the PLCites, 53-41, on February 12.

By making a surprise attack in the fourth quarter, the Gladiators defeated the McCord Field colored five, 49-40, on February 14 to start a six-game winning streak. The PLC basketweavers easily subdued the new Salishan High squad, 46-26, on February 17.

In a return game with the McCord Field Fighting 69th on February 21, Olson's hoopers attained their third victory by 46-34. The improved PLC quintet defeated the Tacoma Coast Guard on February 27, 47-30, thus avenging the earlier defeat by the Guards.

The Gladiator five reached their peak at the end of the season and downed their cross-town rivals, CPS, in two games by scores of 43-33 and 37-34, on March 2 and 8, to annex the college casaba honors for the city.

Loading scorers on the team were Les Storoesli, Jerry Engo, Karl Boehner, Carl Fynboe, and Emil "Scooter" Nordang.



FIRST ROW: Bernhartzen, F. Erickson, Pflaum, Malin. SECOND ROW: Kaaland, Hatten, Hawley, Hill, Thorlaifson, Morrow. President Corrie Person.

Valkyrie Maidens

Among the most active groups on the campus is the Women's Athletic Association, which is composed of all the girls interested in sports, and the betterment of women's athletics at PLC. The association's goal is to foster enjoyment of clean, wholesome fun and companionship in play.

Acting as adviser was Mrs. Rhoda Young, affectionately known as Rhoda, who guided the program, with the usual war-time alterations, and enthusiastically shared all wins and losses.

The tradition of sponsoring the first ice-skating party of the year was upheld, and the organization made a success socially and financially of the affair. A talent show and a fortune-telling booth at the carnival benefited the SAGA and completed the schedule of events.

Late in the spring the award banquet was presented. On this occasion awards were given and the newly-elected officers were installed for next year.

Presiding over the cabinet was Corrie Person. Working with her were Margaret Hill, vice-president; Cecelia Gardt, secretary; Fern Erickson, treasurer; and Bernice Bernhartzen, advertising manager. Other members of the cabinet were the sports leaders. Major sports were headed by Alice Kaaland, Maggie Hill, Betty Hatten, and Carolyn Hawley. Directing the minor sports program were Dorothy Malin, Alice Pflaum, Lilian Thorlaifson, Olive Tweeder, West, Bernice Bernhartzen, Maggie Hill, and Catherine Morrow.

The Major



BASEBALL. With the arrival of Spring, the usual enthusiasm for the baseball turnouts developed. Under the direction of Betty Hatlen the girls really knocked the old apple around. Leader Hatlen is shown in the picture.



VOLLEYBALL. The first sport of the year is volleyball. Alice Kaaland headed this rousing pasttime for 1944, and proved to be a very capable leader. The girls got off to an enthusiastic start and had an enjoyable time playing the game and getting acquainted with each other. Members of the winning team, as shown in the photo, are: **1st Row:** Carrie Person, Bernice Bernhartsen, Virginia Michelsen, Mildred Brodland. **2nd Row:** Marilyn Pflueger, Annabelle Birkestol, Virginia Seaburg, and Jean Lovvold.



BASKETBALL. Basketball is the most popular sport of the year and really brings out some outstanding material, making the games very close in score and exciting to watch. Maggie Hill was leader for this sport and had to hustle to keep up with the Amazons. Holding positions on the winning squad, as shown in picture, were: **1st Row:** Lois Henningson, Cecelia Gardlin, Dorothy Neiman. **2nd Row:** Lillian Thorleifson, Annabelle Birkestol, Alice Pflaum, and Catherine Morrow.

The Minor

1. Lovers of the great outdoors are in their element when they participate in one of the most popular individual sports, hiking, which nets them 50 points, provided that they go on six hikes. This year the hikes were led by Dorothy Melin.

2. Catherine Morrow, a horseback rider herself, led many girls into a new sport offered to those interested in learning how to ride.

3. Alice "Marble" Pflaum led the tennis enthusiasts to the courts adjoining the campus for their regular workouts. A tournament was held in which all automatically participated. Under Alice's management, bowling was offered for the girls who wished to learn the game or desired company on their bowling nights.

4. Roller skating, under the supervision of Margaret Hill, gave skating fans another opportunity to make their points.

5. Otis Twenden West proved her versatility by heading two sports—badminton and swimming. The Y.W.C.A. was the scene of many exciting dips and dives as girls worked to gain 50 points for swimming.

6. Many twosomes could be found during afternoons industriously playing the required 27 holes in order to be in the golf tournament. Wilton Thordarson did a fine job of supervising this sport.

7. The school skating parties, plus individual parties, provided 50 points for ice-skating fiends, who were coached by Bernice Bernhartson.





FIRST ROW: Jurgerson, F. Erickson, Nelson, Keeland, Brodland, Lee, Ludwig.
SECOND ROW: Pflaum, Bates, Person, Hawley, Martens, Matten, A. Birkestol,
Thorliffson, Michelsen, Bernhartson, Hill.

Musclebuilders

One of the thrills for Freshmen girls who tune out for sports is receiving the first year athletic award, a chenille letter which indicates that they are Letterwomen of PLC. Sophomores receive a pin, and Juniors and Seniors are presented with a chevron to be added to the pin.

Every Tuesday and Thursday throughout the year the girls turn out for the various sports and take part in the active competition between teams made up of members from every class in school. The high school girls are also allowed to participate and earn the chenille letter "P."

To receive one of the awards a girl must earn 550 points. These are made by turning out for the four major sports: volleyball, fieldball, basketball and baseball, each giving 100 points. In these four sports, opportunities are offered to make an honor team, with an additional 25 points going to the members of the winning honor team.

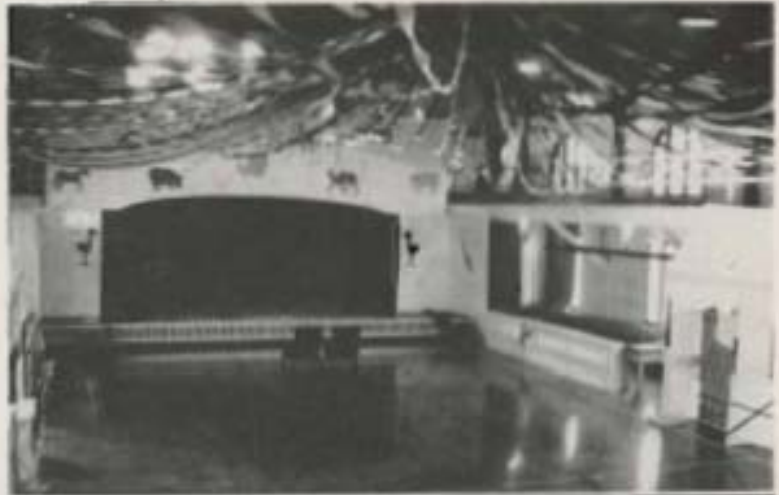
The individual sports, each of which net 25 points to those participating, are hiking, golf, tennis, badminton, horseback riding, ice skating, roller skating, and bowling. Girls who have served on the WAA cabinet are given an extra 25 points.

At the end of the year the points are tallied and turned in to the council to be recorded for issuing awards. An annual WAA party is held at which the awards are presented and new officers installed.

Snap Winners

CARNIVAL TRIMMINGS

First prize . . . Dorothy Meffin



SCIENCE CAN BE FUN

Second prize . . . Annie Lien



WHAT A WOMANI

Third prize . . . Waletta Hornshuh





1—The Fashion Parade. 2—In Procession. 3—Dads and Daughters. 4—Kiss on Lips. 5—Belling Bells. 6—Dumb
 Waiters. 7—S.W.A.C. 8—United We Stand. 9—Luxury Ride. 10—Noodlebusters. 11—Startling Leap. 12—Elope-
 ment. 13—Wed. Reception. 14—Tumble Summer. 15—Relaxation at the Zoo. 16—Chapel Walk. 17—Bess and Ruth.
 18—P.C. Girls. 19—Chipworks. 20—At the Castle of Dreams.



1—Peaches, 2—Hot Lomomo Road, 3—Cheesecakes, 4—Rhode Moo Van, 5—Bill and Gae, 6—Hold That Line, 7—Triumvirate, 8—Fit to Kill, 9—Fresh, 10—Man, 11—Mischief, 12—Casanova, New Style, 13—Think of the Person Behind You, 14—New They Are Now, 15—"Muscles," 16—SAGA Sovereigns, 17—Miniature Cook, 18—Pop the Raiging?, 19—Sunday Go Meeter?, 20—Take a Letter, 21—Character!



1—Dormitory Knights. 2—Marsted in the Stocks. 3—Hopp Along. 4—Charleyhorse. 5—Ayl A'Woorying for Bob. 6—Little Ann. 7—Is the Rough Again. 8—Daffie Is a Beased Girl. 9—The Other View. 10—Groundhog's Day. 11—How Are Scarce. 12—Pond 'Nough to Carry. 13—Fush and Frindles. 14—Put Your Army Around Mr. Honey. 15—Can This Be Hopp? 16—As Grace as They Come. 17—Where's That Bird? 18—Fill'er Up Again. 19—H. B. B. 20—Junior Coeds. 21—The Better Half.

Index

Alshurst, Lorraine	23, 36	Cross, Helen	24, 37
Anderson, Anna	23, 29, 37, 29, 40, 41	Dickson, William	24, 37
Andrews, Eugene	10, 31, 29, 36, 41	Olson, John	30
Asper, Luther	29	Osgood, Leola	24, 30, 37
Bachner, Karl	24, 25, 30	Stanton, Cora	28, 37, 41
Bogden, John	12, 21, 23, 29, 30, 36, 38, 40, 42	Edge, Jerry	24, 29, 38, 42
Bailey, Elizabeth	28, 30, 36	Elmson, Corlano	23, 27, 40, 41
Baird, Muriel	22, 28, 29, 36, 39, 41	Esteban, R. Fern	16, 21, 27, 29, 41, 42, 46
Bardon, Jenny	18	Keen, Barbara	23, 33
Bates, Betty	18, 22, 33, 39, 37, 46	Flodstrom, Helen	22, 24, 29, 36, 39
Belaw, June	28, 28, 32, 39	Fosco, Corlano	12, 18, 21, 37, 41
Bell, June	24, 37	Fosco, Ruth	23, 29, 37
Bergsagel, Edward	24, 25, 38	Frivold, Berghild	34
Berman, Gloria	24, 37	Funk, Paul	21, 29, 22, 35, 38, 40
Bernhartsen, Berdica	18, 24, 43, 44, 45, 46	Pyntoo, Carl	12, 14, 16, 29, 33, 36, 42
Billingsley, Charles	24, 28, 30	Pyntoo, Elizabeth	29, 38, 34, 41
Billingsley, Don	24	Garber, Dorothy	27
Birkstol, Annabelle	21, 24, 27, 41, 44, 46	Gardner, June	24
Birkedal, Grace	21, 24, 37, 39, 40, 41	Gardlin, Cecelia	34, 44
Bondgen, Dorothy	18, 20	Gaul, Jack	25, 29, 38
Born, Alton	26	Giljo, Stephanie	24, 38, 42
Bryson, Patricia	24	Hadden, Mary	29, 37
Brown, Margaret	21, 29, 30, 44, 46	Hansen, Ole	16, 35
Buck, Alice	22, 37, 40, 41	Hansen, Dorothy	18
Burdett, Jeanette	22, 28, 29, 31, 32, 41	Hartel, Helen	12, 14, 20, 29, 37, 40
Burke, Marian	22, 24, 25, 29	Hudson, Betty	12, 22, 29, 23, 37, 39, 40, 41, 43, 44, 46
Carson, Deborah	37	Haugen, Jane	23, 29, 34, 39, 41
Casala, Marjorie	24	Haugen, Larry	29, 30, 42
Coffey, Maigh	22, 34	Hawley, Corde	23, 37, 43, 44
Christensen, Betty	22, 36		

Index

Haworth, Florence	24, 28	Luebbe, Alma May	29, 34
Heggen, Lillian	37	Lone, Ingrid	24, 26
Hellman, Thida	14, 22, 35, 37	Lone, Mary Ruth	20, 28, 29
Henningsen, Lois	22, 29, 41	Lorvald, Jean	28, 37, 39, 44
Hansen, Doris	22, 29	Ludwig, Lois	13, 19, 29, 37, 40, 46
Hill, Margaret	18, 21, 24, 43, 45, 46	Lynne, Jocelyn	23, 27, 40, 41
Hillman, Wesley	22, 29, 38	Martens, Charlene	24, 28, 36, 46
Hopp, Miriam	22, 23, 29, 37, 38, 37, 40, 41	Martin, Carol	31
Hornshuh, Wioleta	18, 21, 29, 30, 34, 41	Melton, Gladys Anderson	23
Hulbert, Shiray	22, 29, 30, 37	Melin, Dorothy	22, 31, 60, 41, 45
Husaboe, Vedis	22, 29, 29, 37, 40, 41	Michelsen, Virginia	12, 19, 21, 28, 31, 29, 40, 41, 44, 46
Jensen, Norman	21, 22, 26, 19	Morgan, Billie	26
Jensen, Ruth	22, 28, 29, 33, 35, 37, 29, 40, 41	Morrow, Catherine	12, 19, 26, 32, 33, 60, 28, 29, 40, 41, 44, 46
Johnson, Arthur	12, 21, 24, 26	Mutt, Amy Jean	22, 26
Johnson, Olga	22, 24, 27, 29, 40, 41	Mykland, Agnes	22, 29, 30, 35, 37, 29, 60, 41
Johnson, Lela Mae	26	Nelson, Anne	19, 21, 23, 27, 39, 41, 46
Johnson, Louis	28	Nestgard, Ruth	18, 23, 29, 37
Jurgensen, Doris	12, 22, 29, 26, 25, 27, 31, 40, 41, 46	Nusser, Carole	22, 26, 33, 37
Kaloud, Alice	22, 27, 29, 42, 44	Newton, Barbara	22, 27, 40, 41
Karnes, Doris	22, 26	Nichols, Albert	20, 26
Kittelson, Janice	26	Niemon, Dorothy	22, 24, 25, 37, 40, 41, 44
Kjesbu, Nora	21, 26, 29, 41	Niestedt, Herbert	12, 22, 29, 28, 22, 12, 26, 40
Kuhn, Albert	12, 21, 22, 29, 28, 22, 26, 29, 40	Nordeng, Erling	29
Larsgaard, John	12, 13, 18, 26, 29, 39, 28, 29, 40	Norman, Anita	28, 29
Lee, Rhoda	18, 20, 27, 28, 40, 41, 46	Ofstedal, Dorothea	12, 22, 29, 37, 40, 41
Lien, Annie	29, 29	Olson, Geraldine	29, 29, 37, 40, 41
Liles, Andy	26	Parish, Dorothy	24
Lindqvist, Arthur	22, 29, 40, 41	Paris, Frank	22

Index

Anderson, Lucette	37	Edman, Marie	19, 27, 29, 30, 31, 32
Arundel, Sylvia	19, 20, 27, 34, 35, 41, 44, 45	Shorecraft, Lester	21, 22, 30, 41
Atkinson, Mary	19, 31, 34	Upton, Aake	22, 29, 34, 36, 39, 41
Belmont, Helen	21, 34	Swanson, William	19, 21, 24, 24, 37, 40, 41
Benson, Alice	19, 24, 27, 34, 35, 42, 44, 45, 46	Sutcliffe, Betty	34, 37
Bergstrom, Edwina	74, 75, 76, 41, 46	Thompson, Emma	21, 29, 36
Bird, Lou	29, 22, 22, 40, 41, 47	Thompson, Helen	31
Brown, Priscilla	12, 19, 26, 16, 29	Thurston, Lillian	27, 37, 39, 42, 41, 42, 44, 46
Burstad, Helen	24	Thurpe, Jerry	23, 38, 39
Burton, Dorothy	33, 34, 38, 37, 40, 41	Torvick, Eunice	13, 14, 23, 25, 27, 29, 40, 41
Carson, Mildred	12, 14, 19, 20, 26, 33, 33, 34, 35, 37, 40, 41	Town, Ruth	23, 24, 29, 30, 30
Carlson, Florence	19, 31, 26	Valley, Kay	24, 37
Chase, Ted	21, 29, 22, 24, 22, 22, 40	Valstad, Esther	24, 26
Clark, Helen	13, 22, 37, 40, 44	Varian, Harold	29
Clark, Fred	19, 20, 22, 25, 27	Walden, Ruth	21, 24, 24, 27, 40, 41
Clayton, Hester	12, 22, 22, 29, 37, 39, 41	Wang, Jan	23, 29, 29
Colander, Agnes	21, 28, 29, 31, 37, 40, 41	Warren, Albert	24
Conroy, Edwin	26, 29, 29, 31, 35, 40, 41	Webster, Sargent	24, 31, 30, 42
Cotter, Joan	43, 18, 37, 40, 41	Wheeler, Violet	24
Schuch, Francelle	37, 34, 39, 30, 37, 40	Wick, Ollie Theoden	45
Seaburg, Virginia	19, 21, 25, 37, 40, 44	Westerdale, Carole	25
Seaman, Ardis	22, 20, 36, 39	Wickham, Marjorie	24
Seino, Alexander	21, 20, 37, 42, 41	Wigley, Betty	24, 29, 37, 41



Skate Your Date on Ice

Fun
For
The
Whole
Family!

Service Men Welcome, Too!



Afternoons — Evenings

Late Night Sessions, Thursday and Saturday

10:15 - 12:00 Midnight

Fred Holt at the Organ

ENJOY OUR BEAUTIFUL SNACK BAR

(Glass-Enclosed — Delicuous Food — Fireplace)

Professional Skating Instructions

by Our Two Experts

GEORGE AND LEAH MILLER

Phone LAKEWOOD 2170 for Appointments

LAKWOOD ICE ARENA

Steilacoom Lake

PACIFIC LUTHERAN COLLEGE
Parkland, Washington



FOUNDED OCTOBER 14, 1894
Will Celebrate
ITS FIFTIETH ANNIVERSARY
OCTOBER 14, 1944

ALUMNI AND FRIENDS

Remembering the Past

and

Looking to the Future

Are Rallying to Support the School

What Are You Doing for P.L.C.?

A

N

D

Y

S

Ice Cream
Soft Drinks

Sandwiches
Lunches

B. M. Johnson Garage

ASSOCIATED PRODUCTS

GR. 8413

Parkland

Russ's Place

HAMBURGER

REFRESHMENTS

Good Coffee

Flavored Skew, Prop.

GR. 8410

Pacific and Sales

Beitz Service Station

GAS—OIL LUBRICATION—OIL

12001 Pacific Avenue

Indian Inn

Rhode Island Red Chicken Dinners
and Lunches

GR. 8355

At Brookdale

R. E. Poebel

YOUR LOCAL FUEL OIL DEALER

Granite 8857

96. 7, Box 475A

WATERS

SERVICE STATION — GROCERIES

Highway and Park Ave.

GR. 7810

JOHNSON and ANDERSON

GENERAL MERCHANDISE

"The Store That Has It"

ON THE MOUNTAIN HIGHWAY AT PARKLAND, WASHINGTON

Anderson Grocery

CHASER ROAD



Parkland

Washington

NELSON'S SERVICE

90th and Parklwa

GR 9811

Parkland Barber Shop

C. WOOD

Parkland

Washington

Pacific Avenue Drug

A. H. Seumbeck, Prop.
Prescriptions Filled

FOUNTAIN SUNDRIES DRUGS

8248 Pacific Ave.

GA 9164

COMPLIMENTS OF

McDonald's Super Service

H. Berger & Sons

FINEST QUALITY MEAT
GROCERIES AND FEED

*The Store Where Your Dollar
Goes Farther*

8401 Pacific Ave.

Tacoma

72nd Street Cleaners

WE CLEAN ANYTHING

Call and Deliver

72nd and Pacific Ave.

Garland 5495

IT PAYS TO PLAY

Dick Howell Sporting Goods

929 Commerce

Tacoma

MAIn 3485

Compliments

of

Steiro & Hansen

Commercial Contractors

G. ANDERSEN FUEL & TRANSFER CO.

Highest Quality

Wood and Coal : Stove and Diesel Oil

Snappy Speedy Service

3519 Hook Street

TACOMA

13 Broadway 3813

**CAVANAUGH LUMBER
COMPANY**

Now Enriched

With

8 VITAMINS AND
MINERALS

Yes! Extra amounts of 8 vitamins and minerals are added to every loaf of Jordan's Bread. Jordan's is over **TWICE** as rich in these food essentials as most ordinary **ENRICHED** white bread. Ask your grocer for

JORDAN'S
FRESH-AS-A-DAISY
BREAD

WAR BONDS

—A Good Investment

When you buy a War Bond you not only help in the winning of the war but you help to establish a post-war future for yourself. You invest in your own welfare, and in your country's security.

**PUGET SOUND
NATIONAL BANK**
OF TACOMA

Member Federal Deposit
Insurance Corporation

**BUY WAR BONDS TODAY—
ELECTRIC KITCHENS . . .
AFTER THE WAR IS WON!**

The home you'll establish when Victory comes will be a more comfortable, more enjoyable home with added convenience if you purchase an **ELECTRIC KITCHEN**. So remember, the bonds you buy now will help you establish that home—and bring Victory nearer, too.

→XOXO←

TACOMA CITY LIGHT

GRIGGS CUT-RATE DRUG

Mark E. Griggs, Prop.

3519 McKinley Ave. Tacoma, Wash.

HOLLY MARKET

MEAT, GROCERIES AND
VEGETABLES

WA 8300 3514 McKinley
Tacoma

DIERS FURNITURE CO.

4339 So. Tacoma Way WA 7220
Tacoma, Washington

Repairs Parts

WM. CORNELL PLUMBING

1227 So. Tacoma Way
Phone WA 2831

HR-GR 8155 Tacoma, Wash.

Heating Headquarters

Complete Heating Equipment
and Service

WALSH HEATING CO.
BR. 2833 2315 4th Ave.

BOYLE'S PHARMACY

YOUR NEIGHBORHOOD DRUG-GIST

3512 McKinley Ave. WA 5907

Capitol Theatre

"The Captured Show is the Place for You"

4800 So. Yakima GARland 8762

Greetings from the

FRENCH DRUG STORE

E. R. French, Prop.

4621 So. Yakima GARland 7272

FULTON'S BAKERY

2073 4th Ave. WA 8722

CARLSON'S PHARMACY

Phone GARland 3734
3005 South Yakima Avenue
Tacoma, Washington

VINCENT CASH MARKET

MEAT — FRESH FRUITS
AND VEGETABLES

BR. 4562 3510 So. Kinley

WEEK-END FEATURES

NEFF'S FOOD STORE

CANDORIES • MEATS • FRESH FRUITS
AND VEGETABLES

Free Delivery

3517 McKinley Avenue

WA 6112

BUY WAR BONDS TODAY!

TOMORROW'S

GAS EQUIPMENT

WILL BE ULTRA MODERN!

WASHINGTON GAS & ELECTRIC CO.

Aberdeen - Hoquiam - Montesano
Cannon Beach - Clatskanie

TACOMA

Olympia - Everett - Seabeach
Puyallup - Sumner - Auburn

D & M Sales and Service Company

Sales and Service of Typewriters - Adding
Machines - Calculating and Bookkeeping
Machines

720 1/2 St. Helens Ave. Tacoma 2, Wash.
Phone MAin 1474

Compliments

of

MARCH

Construction Company

31st and South Sprague

GA. 4439

LUTHERAN CHURCH DIRECTORY

TACOMA

TRINITY LUTHERAN CHURCH

Rev. Nordahl B. Thorpe
North York and Wheeler St.
GRand 8163

BETHEL LUTHERAN CHURCH

Rev. E. Arthur Larson
So. 54th and L Sts.
GRand 9720

CENTRAL LUTHERAN CHURCH

Rev. H. P. Huff
North 14th and G Sts.
MAin 4887

MESSIAH LUTHERAN CHURCH

Rev. O. L. Johnson
So. 12th and P Sts.

HOPE LUTHERAN CHURCH

Rev. Clarence J. Johnson
South 82nd and Western Sts.

GRand 5550 and 5651

SEATTLE

PHINNEY RIDGE LUTHERAN CHURCH

Rev. R. H. Ofstedal
Phinney and North 75th
MUnner 4556

St. Paul's ENGLISH LUTHERAN CHURCH

Rev. Edwin Becker
Frontal A system at No. 43rd St.
MUnner 3177

UNIVERSITY LUTHERAN CHURCH

L. H. Steinhoff, Pastor
1604 East 90th Street

Phonon RE 9036 or VE 3368

**REED'S MARKET—THE HOME of
FINE FOOD AND CHOICE FOODS**

DRUGS

Open from 8 a. m. to 8 p. m. daily
except Sunday which is 10 a. m. to
8 p. m. and Monday 1 a. m. to 3 p. m.

REED'S MARKET

W. and Mrs. Sydney Madson
New Props.

98 0900 on Pacific Ave. Portland

The Bungalow

Delico and Roy

"Good Things to Eat"

98 9910 On Mountain Highway

**A WAR BOND BOUGHT
TODAY MAY KEEP A
PURPLE HEART OUT
OF YOUR HOME
TOMORROW**



Box 4, Portland

Compliments of

ROSS FLORISTS

PARK AVENUE CLEANERS

"The Biggest Little Cleaners in the World"

2305 Park Avenue

Garland 2056

RAU'S **Chicken
Dinner Inn**

CALL HILDA, GRandite 9979

BUTTER-FRIED CHICKEN STEAKS DINE AND DANCE

PRIVATE BANQUET ROOMS

SPANAWAY BUS TO BETH DORR

MESSAGES

Specially Designed to Complete
each job at a very additional cost

GIBSON'S

"The Honor of Flowers"

Pacific Ave. at 34th Tacoma

Weaver Pie Bakery

R. Ray Bell, Owner

We Cater to Restaurant,
Lodge and Banquet Trade



Garland 4710 213-17-1454 34th St.
Tacoma, Wash.

Compliments
of a
Friend

Storlie Funeral Chapel

In the Same Location Since 1908

FUNERAL SERVICE AND CREMATORY

Oakes
APPAREL

921 Broadway Tacoma

Baker-You-Drive

754 Commerce St.
CARS AND TRUCKS
Tacoma Owned and Operated
MAin 5515

Headquarters for
QUALITY DIAMONDS,
WATCHES AND JEWELRY
In Tacoma Since 1880
MIEROW'S

1105 Broadway Opp. Fisher's

SMART COLLECTORS

CHAIRMAN

HELEN DAVIS 917 Broadway

Caswell Optical Co.



MAin 4748 Tacoma

PIPER FUNERAL HOME

5436 South Puget Sound

Buy Bonds and Bring the
Boys Home Quicker

LUNDQUIST - LILLY

TACOMA - SEATTLE

CC. **MELLINGER CO.**

Tacoma's Leading Funeral Directors

Since 1888



510 Tacoma Ave

BR. 3264

Compliments of

**Buster Brown Shoe
Store**

2 Stores to Serve You
Shoes for Every Member
of the Family

1122 Broadway

9439 So. Tacoma Way

CONGRATULATIONS TO THE CLASS OF 1943

It has been a pleasure to make the portraits of this annual.
Thanks and lots of good luck.



PARENTS AND FRIENDS

Have your Tacoma's leading portrait studio. We specialize
in family, child photography and wedding pictures.



WEDDING PORTRAITS

In garden, chapel, church, home and studio. Candid shots
taken at informal groups or receptions. Call immediately
for particulars.

KRUG - LUTZ STUDIO

762 Broadway

MAin 4193

Opp. Winthrop Hotel

**SEARS-ROEBUCK
& Co.**

Tacoma, Wash.



**BUCKLEY - KING
FUNERAL SERVICE**

101 Tacoma Ave.

Blay. 2166

WEYERHAEUSER TIMBER COMPANY

SUBSCRIBES TO

A policy of operating its properties in such a way as to provide permanent and profitable investment for capital; to bring about reasonable and profitable employment for men; and to furnish society with uninterrupted supplies of forest products.



Homogenized
for Health

Medosweet Kreamilk

MEDOSWEET DAIRIES, Inc.

Tacoma

DO YOU BELIEVE IN MIGHT?

You'll find it in

LUSTERIZED DRY CLEANING

Your clothes stay clean longer . . .
over longer but better longer!

PANTORIUM CLEANERS

Tacoma-Olympic Laundry

CA. 433

RICHFIELD GAS AND OIL

Daniel's Station

GR. 9479

Parkland

Victor's Market

Your Neighborhood Variety Store

Brookdale

Washington

Brookdale Service

Phone GR. 8957

Route 7, Tacoma

GAS - LUBRICATING OIL

COMPLIMENTS OF

Brookdale Lumber Co.

GR. 8342

Brookdale

Bring your prescriptions to the pharmacy with absolute confidence that they will be compounded as quickly as possible with fresh ingredients of Government standards.

LUNDBERG DRUG CO.

Pacific Avenue at Airport Road

Gladiator Service Station

SUNSET PRODUCTS

East Bona

Parkland

Avenue Feed Store

9886 Pacific Ave.

Tacoma, Wash.

Phone ORanite 8841

Blue Rustic

& a Liquid Pop

ICE CREAM

SANDWICHES

LUNCHES

PARKLAND LIGHT & WATER CO.

Pioneer Among the Mutual Light & Water Companies of the State
29 Years of Successful Operation and Growth



We expect to move to our
new home, corner of 4th Street
and C, June 1, 1944



TRUSTEES

Stanley K. Mason	President	Iver Johnson	Secretary
Walter P. Daniels	Vice President	Sidney Selden	Manager
O. J. Stone	Treasurer	Samuel Brown	Manager
		Esther Davis	Collector

Langlow & Ferguson

PRINTERS



Bankers Trust Building
Main 1446 Tacoma

C. O. Lynn Co.

MORTUARY

717 Tacoma Ave. Phone Main 7743

WASHINGTON HARDWARE CO.

HARDWARE SPECIALISTS

All Sorts of Special Equipment — Features Spalding

921 Pacific Ave.

Broadway 1136

Tacoma, Washington

1141 Broadway

Main 4141

SELDEN'S

"First in Their Country"

FLOOR COVERINGS, DRAPERIES, OCCASIONAL FURNITURE,

VENETIAN BLINDS, WINDOW SHADES

**TACOMA SAVINGS AND LOAN
ASSOCIATION**

START A SAVINGS ACCOUNT FOR FUTURE INDEPENDENCE

Courteous Service

Highest Dividend

No. 9th and "A" Streets

Tacoma, Washington



Dependable Delivery
**FUEL OIL
 SERVICE CORP.**
MAIN 3171
 816 A ST., TACOMA

★ *Fine China,
 Crystal, Silver,
 Handsome Jewelry*

GUNDERSON

ORIGINAL JEWELRY

For Sweaters of
 Good Quality
 Come to

**Quality
 Knitting
 Company**



COMPLIMENTS
 OF
**AMERICAN
 PLUMBING
 &
 STEAM
 SUPPLY
 COMPANY**



Congratulations to the Graduate

Compliments of
S. Grinstead
Jeweler

Fine Diamonds and Watches

1015 Pacific Ave. Tacoma, Wash.

ROLLER SKATE

FOR FUN AND HEALTH

Organized Ice Cream at the Warbler

OPEN AT 7 P. M.
 EVERY NIGHT EXCEPT MONDAY
 4 Hours to Serve You

Largest Floor in Tacoma

ROLLER BOWL

30th and South Tacoma Way
 Phone GA 5334

Bergh-Griggs Co.

Plumbing

Heating

BURNER SERVICE

All Makes

709 Pacific Ave.

MAin 1197

Tacoma, Wash.

United Mutual Savings Bank

Tacoma's Only Savings Bank
Washington Building
11th and Pacific

Member

Federal Deposit Insurance Corporation

DAMMEIER PRINTING CO.

861 PACIFIC AVENUE

MA. 1065

Tacoma

AMOCAT COFFEE

In the New
Victory Flag

WEST COAST GROCERY
COMPANY

"In College You Learn Where
to Find It"

"BOOKS TELL HOW!"

When you want Books & Stationery

C. Fred Christensen
STATIONER

913 Pacific Ave.

Tacoma

Allstrom Printing Co.

GENERAL PRINTING
SERVICE



MAin 6766

714 Pacific Ave.

"A COMPLETE PHOTO SUPPLY SERVICE"

The
Camera Shop



1021 PACIFIC AVE.
TACOMA, WASH.

MAIN 4412

RAYMOND ELECTRIC CO.

ENGINEERS
CONTRACTORS

813 Pacific Ave

Tacoma

THE STATIONERS, Inc.

COMPLETE OFFICE AND SCHOOL SUPPLIES

926 Pacific Ave.

MAin 2153

925 Commerce St.

Autographs



Of major interest to students, faculty, and friends of PLC have been the many improvements made on our campus this year. Gymnasium, chapel, recreation room, halls of Old Main, dormitory rooms, sidewalks, and classrooms have been rejuvenated and rebeautified. Above are shown Isabel Hanted and I'Lee Rod in the first remodeled room to be finished.



Autographs



Under the direction of Dean W. C. Schroetenberg, the comedy play, "Brather Goose," was presented on May 12 as the spring dramatic feature. The members of the cast, as shown above, are: 1st Row: Rogan, Norman, Webster, Westerdal, Torvind, I. Lona, 2nd Row: Schach, Christenson, C. Fyrboe, Hillman, Thomas.

Autographs



Priscilla Preus was chosen to rule as Queen Priscilla I over the May Day festivities of PLC this year.



Autographs

