



SPORTS
Sports editor says: I want
you to be a fan
PAGE 8



BUSINESS
Nokia deal may be the
change Microsoft needs
PAGE 4



THE MOORING MAST

PACIFIC LUTHERAN UNIVERSITY

SEPT. 13, 2013

mastmedia.plu.edu

VOLUME 90 SPECIAL EDITION

GARFIELD BREAKS GROUND

By ALISON HAYWOOD
News Editor

Nine golden shovels stood propped in the ground with hard hats hanging off of them, awaiting the start of the ceremony. People involved in the construction process sweated in their dark business suits in the 75-degree heat. They shifted in their plastic chairs and squinted in the sun.

John Korsmo, president of Korsmo Construction, and Kirk Rector of Affinity Real Estate Management took the podium. The groundbreaking ceremony of Garfield Station had begun.

Garfield Station is a construction project for a new building that will stand on Garfield Street between C Street and Pacific Avenue. It will house apartments, offices and retail spaces.

"It's going to be great for PLU, it's going to be great for Parkland," Dick Muri, state representative, said.

The building has been in the planning process since 2008. Investors forced local businesses to vacate in fall 2012 for an anticipated start of construction in winter 2013, but a lack of funding delayed construction until September.

Demolition of the old buildings, which had sat vacant for nearly a year, took place from August 26-29. An empty lot greeted new PLU students at the start of the school year. Now that construction has begun, Garfield Station is anticipated to be completed in August 2014.

Sheri Tonn, vice president of finance and operations, commemorated the history of Garfield Street during the ceremony. She explained that the name Garfield Station referred to the former railway station on the corner of Garfield and C Street, where the Northern Pacific Railroad ran south from downtown Tacoma.



PHOTO BY JESSE MAJOR

City council members, representatives from Korsmo Construction and Affinity Real Estate Management and Pacific Lutheran administrators toss the first shovelfuls of dirt in the construction of Garfield Station. Korsmo Construction anticipates completing the project in August 2014.

Tonn also spoke about the old Dahl grocery store, recently demolished, whose owners Hans and Malla Dahl gave PLU faculty unlimited credit to buy food during the Great Depression.

Local politician Douglas Richardson said residents of the apartments would have no property tax for the first 12 years and retailers would pay both property and sales tax. He described the project as an investment, and said the tax revenue for the county would be greater than it was before.

Despite this, Tonn described the rent for the building as "pretty affordable," comparing them to the Westminster Towers apartments on Park Avenue. "They're not Seattle prices by any means," Tonn said.

Barbara Gelman, former

city council member, said Garfield Station was like the "fourth cornerstone towards the renovation of Garfield Street," and said when investors first met, it was as if "the Garfield Street dreams had finally come true."

Rector said Garfield Station was the "next logical step from the bookstore." Indeed, John Schack, the architect who designed the Garfield Commons, designed Garfield Station in the same architectural style as the PLU bookstore.

University Pastor Dennis Sepper gave the project a blessing. The people in suits donned their hard hats and planted their golden shovels into the ground.

Shutter clicks filled the air as local press caught the moment on

camera. Several smiles later, the planners dispersed to talk with audience members and enjoy the refreshments of lemonade and cookies.

Note: Reland Tuomi contributed to this article.



VIDEO
COMPONENT
ONLINE

What to do at PLU

Ongoing

"To Be Human." Art exhibit featuring expressive, realist and abstract images of the human figure in work in a variety of media. *Daily*—Sept. 11-Oct. 9, 8 a.m.-4 p.m. University Gallery in Ingram.

Friday

Follow the Chocolate Trail: Women's Center, reDesign House, Diversity Center and Wang Center open house. Meet the staff, learn about upcoming events and enjoy chocolate, trivia, games and prizes. *Various locations*. 2-4 p.m.

Karaoke night. Join Campus Ministry for a wild night of singing, laughing and meeting new friends. *AUC CK Hall*. 8:30-11 p.m.

Saturday

Wall-raising kickoff event to begin the construction for the Habitat for Humanity home. 10-11 a.m. Email service@plu.edu for more information.

Sunday

Richard D. Moe Organ Series. Featuring Paul Tegels, University Organist. *Lagerquist Concert Hall*, 3-4:30 p.m.

Sunset hike to Mount Rainier. Join Campus Ministry's annual hike to bask in the splendor of creation. Sign up in the Campus Ministry office, AUC 190, or call 253-535-7464. 1-9 p.m.

WHAT'S INSIDE

Arts & Entertainment
Editor introduces
Mast Media's new website
page 3

Sports
Season predictions
for Fall 2013
page 8

Opinion
"Ten Things I Wish I
Knew as a First-Year:" Editor
speak from experience
page 5

Student-driven policies take effect

By RELAND TUOMI
News Writer

Stay in Place

This procedure will go into effect when there is a potentially dangerous situation off campus, as opposed to a traditional lockdown that is brought on by a direct threat to campus. Students are to immediately proceed to the nearest building and stay there until it is safe to leave.

All buildings with a card swipe will automatically lock, and buildings without a card swipe will be physically locked and be inaccessible until the lockdown is over. Activities in the buildings will continue as usual during a Stay in Place.

"The hope is that Stay in Place will be a more accurate representation of the [level of the security] concern," Tom Huelsbeck, executive director of residential life and associate dean of campus life, said.

New visitation policy

On-campus residents may now choose the hours for their halls and wings to allow guests to visit.

"This is transitional housing," Huelsbeck said. "Students want additional freedom and responsibility, and setting their visitation times will satisfy both."

This new policy will not affect Kreidler and South as there were already no constraints on visitation in these halls.

Alcohol in Kreidler

Of-age students living in Kreidler Hall may now have alcohol in their rooms. This was granted to South Hall residents last year, and Residential Life believed the next logical step was to give Kreidler the same privileges. Both halls are only available to students with a junior class standing or who are age 20 or older.

Alcohol is only permitted in the student's room, and when there is an open container, only that student's friends who are 21 and older are allowed to be in the room. If there is a minor in the same room as an open container of alcohol, serious consequences will follow whether the minor was drinking or not.



CHEVRON

JUST MADE SPIRIT GEAR EVEN

TRENDIER



STILL NEED YOUR FALL TEXTBOOKS?

WE STILL HAVE A LARGE SELECTION OF
NEW, USED, E-BOOKS, & RENTALS!

SHOP IN-STORE AND/OR ONLINE NOW!

Garfield
BOOK COMPANY
— AT PLU —

STUDENT MEDIA SHINES

Organizations encourage students to get involved

By **KELLI BRELAND**
A&E Editor

It's available online, aired on TV and can be picked up and read in almost every building on campus. Student media plays a major role in the Pacific Lutheran University community and is gearing up for a successful year of production.

Encompassed within the student media title is a variety of media outlet organizations, but connecting them all is the University Student Media Board (USMB).

"It's kind of the platform, or spider web, that holds student media together," Sam Hosman, chair of USMB, said. "It's a really good group of people and student leaders."

All student media organizations are student run, although some have staff advisers.

This year, student media aims to have a strong presence across campus and provide a valuable experience for students who choose to be involved.

"Student media is a great learning opportunity for students," Hosman said. "Not only do they learn within their own individual organizations, but they are also able to impact the whole campus."

Among student media organizations is *Saxifrage*, PLU's annual literary and art magazine.

Much more than just a publishing outlet, *Saxifrage* creates opportunities, events, musical performances, workshops and multimedia extravaganzas for artists and writers.

Senior Melanie Herring, a co-editor of the magazine, said, "this year, *Saxifrage* is working to strengthen the community of extracurricular as well as career-driven artists by allowing ample opportunities for them to get involved through events that showcase their art and connect

them with equally creative peers."

Submissions to the magazine can be anything from short stories, to photos, to musical scores and are judged by members of the PLU community.

"We're going to be the people who help artists get together and meet one another," senior Chris Mahon, another co-editor of *Saxifrage*, said. "We're going to be giving them chances throughout the year to have an audience for their work."

To keep updated with *Saxifrage*, visit its website at <http://www.plu.edu/saxifrage/>, its Facebook page and its Twitter account.

The Matrix is PLU's journal of social justice, created to help student voices on important topics be heard. It works to start valuable conversation and unite scattered dialogue into one central magazine.

All students and viewpoints are accepted, and *The Matrix* encourages students to submit their work. Many types of submissions are welcome, including poetry, essays, artwork, photography, song lyrics and comics.

There will be an interest meeting for *The Matrix* on Wednesday from 7-7:30 p.m. in the lower grey area of the Anderson University Center (AUC).

Unlike the printed *Saxifrage* and *The Matrix*, LASR is a radio station. Any student can join and start his or her own radio show, regardless of his or her major.

"LASR is seeking to create a space where you can share your music with a cool community of DJs and with the entire campus," Olivia Ash, general manager of LASR, said.

Anyone and everyone can apply. To get more information, visit LASR's website at <http://www.plu.edu/lasr/>.



The Mooring Mast is PLU's weekly, award-winning newspaper. The primary role of *The Mooring Mast* is to discover, report and distribute information about important issues, events and trends that impact the PLU community.

The staff publishes new issues every Friday and uploads new content to the website on a daily basis.

Interested writers and contributors can join *The Mooring Mast* at any time throughout the year. They may choose to write for news, arts and entertainment, business, opinion or sports. Photographer positions are also available.

Mast Student Television partners with *The Mooring Mast* by producing video components for written pieces. Alongside these videos, interested students can start their own video productions or take part in Mast TV's weekly live news broadcast, News @ Nine.

Meetings for *The Mooring Mast* and Mast TV are held every Monday at 8 p.m. in *The Mast* office in the lower AUC room 172.

Students can attend a meeting, visit *The Mooring Mast* site at <http://mastmedia.plu.edu/> or email masttv@plu.edu or mast@plu.edu for more information.

Now is the time to get involved, make an impact and, most importantly, have fun.

Getting Technical: Mast Media introduces upgraded new website

By **LEAH TRAXEL**
Online Editor

Welcome to the new school year, Lutes. Whether it's your first time on campus or you're anticipating graduation this year, everyone is excited to have you on campus.

Here at *The Mast*, we've been making some big changes. The biggest one you'll notice is our website.

Some colleagues at *The Mast* and I have been working all summer putting together a website we think you'll love and use.

These changes were part of a reassessment of how *The Mast* produces content.

Even though we're a weekly paper, we don't live in a world where the news happens on a weekly basis. The news is happening every second of every day, and this new website is helping us adapt to that system.

The updated website gives us the flexibility to add a lot of cool things to our coverage.

From our site, you can find a weather forecast, our latest stories and archives of *The Mast* going back to 1924. We can also expand our coverage to include things the paper hasn't in the past, such as lifestyle stories, and we can share video, photos and text like never before.

We've put in a lot of hours to update everything about the way we bring you the campus news, but we still need your help. We asked ourselves, "what do Lutes need to know every day?" and we tried to guess how you would answer that question.

So visit the website, check out what's new and tell us your thoughts by commenting on the stories you'd like to see more of.

We need to know if we got it right.

Welcome to the new school year, and welcome to the new Mast Media.

submit
letters
to the EDITOR
and
CORRECTIONS
mast@plu.edu

Arts and entertainment clubs seek participants

By **KELLI BRELAND**
A&E Editor

When it comes to the start of the year, overwhelming can be an understatement. The tidal wave of emails, pamphlets and handouts swarming campus during the first

weeks of fall semester makes it easy to overlook information.

Yet for Pacific Lutheran University's clubs and organizations, this is an important time to start attracting interested new members.

Among the multitude of

clubs and organizations, music and theater groups shine. For those looking for a chance to become involved, here is a simple breakdown of some of the best arts and entertainment related organizations PLU has to offer.

The HERmonic and PLUtonic

a cappella groups are upbeat, competitive and talented. Honing in on a shared love of a cappella music, these groups also tour and compete against other schools at a national level.

PLUtonic auditions will be on Saturday from 12:30-5:30 p.m. in Mary Baker Russel Music Center room 334. HERmonic auditions are on Saturday from 12-4 p.m. in Anderson University Center room 201.

The PLU Jazz Choir is an opportunity for music students to play, sing and perform jazz music. This choir goes on tour and performs periodically throughout the school year. For more information, visit its website, <http://community.plu.edu/~jazz/>.

The American Choral Directors Association is for students with a passion for choral music. This organization aims to inspire members to excel in choral music through networking and performance opportunities, workshops and teacher panels. It meets monthly and aims to attend the 2013 National Conference in Dallas.

Other musically-minded students can turn to Mu Phi Epsilon, an internationally recognized music fraternity with a mission to sponsor musicianship, support service to the school and community and spread an appreciation of music

and friendship through music.

This small group creates opportunities for members to perform and serve in the community. To get involved, check out the Mu Phi Epsilon website, <http://community.plu.edu/~muphiplu/>.

For theater, students can turn to PLU's Alpha Psi Omega, "a national theatre honor society devoted to supporting student-produced theatre," according to its website.

This group will perform in a variety of plays and will hold auditions four to six weeks before each show. To find out more information about becoming involved in Alpha Psi Omega, email theatre@plu.edu.

For those who love dance and meeting new people, the welcoming atmosphere of Swing Club may be just the place. Meetings are held every Monday at 8 p.m. in the Cave. Anyone, regardless of dance ability, may join at any time.

Now is the time to get involved. Not only can great opportunities, connections and memories be found by joining the aforementioned organizations, but 64 other clubs and organizations are also welcoming new Lutes.

Attend a meeting, audition or simply check out a club website to get started.



PHOTO BY LACE SMITH

Juniors Olivia Ash, Jakob Maier and Angela Shier, LASR participants, inform incoming students about the student radio station. Newcomers gather around tables to sign up for student organizations during the Involvement Fair on Monday. The fair functioned as an opportunity for clubs and organizations to attract new members, gain publicity and encourage interaction within the PLU community.

I'm new here: the Business section

By BJORN SLATER
Business Editor

Welcome to the centerfold of the paper and another year, or maybe your first year, at Pacific Lutheran University. My name is Bjorn Slater, and I am a finance major, a junior and editor of the new Business section, which has replaced the Features section this year.

Business is a broad term and covers many topics, so there

are a lot of options as far as content for this section goes. I plan on keeping up on as much national news as possible, such as Microsoft's recent acquisition of Nokia's Phones Division for \$7.2 billion.

I will focus on local news more relevant to us here at PLU as well, like the financial side of the Garfield Station construction.

I also plan to roll out content about furthering your career, such as how to find an internship,

and what kinds of experiences students have had with their internships. You can already read article below on how to find a job while going to school.

I am open to ideas from readers as well, and if you would like to get more involved, feel free to email us at mast@plu.edu about writing stories of your own.

I look forward to hearing responses to the new section and hope everyone had a great first week back.

Like us on
Facebook!

[https://www.facebook.com/
PLUMastMedia](https://www.facebook.com/PLUMastMedia)

LOOKING FOR A JOB? HERE'S SOME TIPS

By KELSEY HILMES
Guest Writer

The start of a new school year has begun, and with it we each bring a set of goals and responsibilities for the months ahead.

As first-years who want to save money or as juniors who just realized they need to pay their rent, finding work in college is a common goal among all college students.

According to the United States' National Center for Education Statistics, 79 percent of college students in 2008 worked while enrolled in college full time. Recent trends indicate that number is growing.

While job hunts can be

daunting, there are lots of resources available to kick off your search. Here are a few tips for finding work:

1. Visit the Career Connections Opportunities Board

As the official site for job listings on campus, the opportunities board includes volunteering, work study, on-campus and off-campus jobs as well as internship positions. You can also submit your application on the board.

At the beginning of the school year, the job listings may focus exclusively on one kind of job — teacher's assistants, lab graders, assistants in the music department — but more jobs will be posted throughout the year. I recommend checking back once a

week.

2. Don't refuse off-campus jobs

There are lots of great places in Parkland and Tacoma that hire students who qualify for work study. In the case of Federal Work Study, these positions must be for a non-profit or a company that works to serve its community.

The funds for Federal Work Study come from the federal government, which means that it helps both you and your employer.

Even if you do not qualify for work study, off-campus jobs can offer you a closer tie with your community and encourage you to go out and enjoy Tacoma.

3. Get help with your resume, cover letter and interview

The office of Career Development, which works under Career Connections, offers resume drop-in hours from 3-5 p.m. Monday through Friday in Ramstad 112. They will help you edit or write your resume to highlight your strengths as a candidate.

You can also visit the Ramstad Commons to set up an appointment for a mock interview where you can practice answering the most common interview questions.

4. Keep your eyes and ears open

There are lots of opportunities on campus and in your areas of interest for paid work positions. Being involved in organizations across campus can help you learn about these opportunities and

give you a leg-up as a candidate.

For example, if you are interested in finance and investing, joining the Mary Lund-Davis Student Investment Fund (SIF) will give you experience in choosing stocks to invest in.

SIF started with a \$25,000 donation from Mary Lund-Davis in 1982, and under the management of PLU students it has grown to over \$160,000. Members meet Thursdays in Morken 138 from 8-9 p.m. to discuss potential investments for the fund in different equity sectors.

The start of a new school year and finding a new job can feel overwhelming, but with some perseverance and focus, landing a part-time position can be a reality for anyone.

* * * ATTENTION STUDENTS * * *

NON-DISCLOSURE OF "DIRECTORY INFORMATION"

The Family Educational Rights and Privacy Act of 1974, popularly known as the "Buckley Amendment" and carrying the acronym "FERPA," governs the University's collection, retention, and dissemination of information about students. (The document appears in the Student Handbook.)

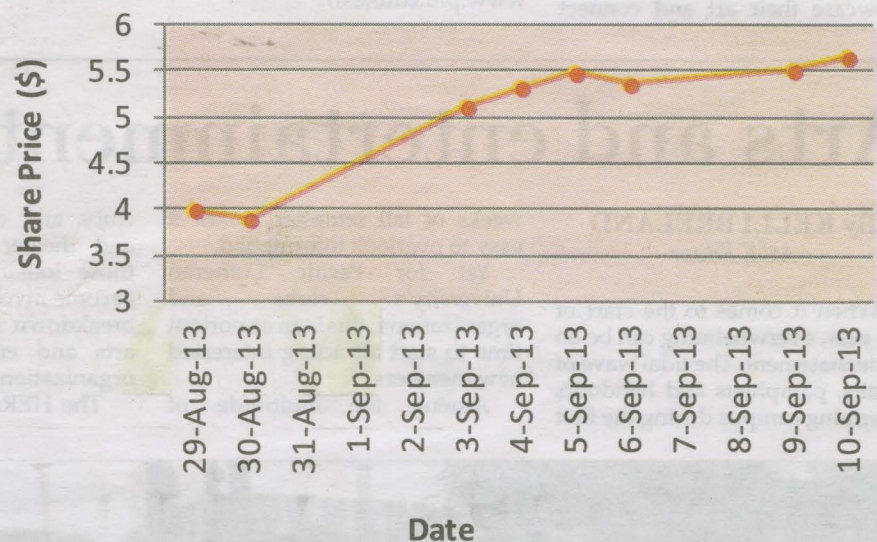
One category of information covered by FERPA is called "directory information." Pacific Lutheran University has designated the following items as directory information: student name, local and permanent addresses and telephone numbers, E-mail address, date and place of birth, participation in officially recognized activities and sports, weight and height of members of athletic teams, dates of attendance, class standing, previous educational agency or institution(s) attended, major and minor fields of study, anticipated date of graduation (if that has not yet occurred), and degree(s) and award(s) conferred (including dates).

The PLU FERPA policy appears on the Student Handbook website for your review at: <http://www.plu.edu/student-handbook/code-of-conduct/FERPA.php>.

Under FERPA the University may disclose directory information without prior written consent unless an "eligible student" (18 years or over) or a parent (if the student is under 18 years of age) gives notice in writing to the contrary to the Office of the Vice President for Student Life restricting the disclosure of the directory information, as it pertains to the student, by the last day of registration for any given academic term at this University. **Please be assured that PLU uses discretion when releasing information** (e.g. roommate notification or compliance with federal requirements.) If you participate in activities such as music or drama performances, athletics or represent PLU in other public capacities, University policy is to issue minimal information in press releases.

If it is your wish that PLU NOT disclose "directory information" about you under any circumstance, you must come to the Student Life Office, Hauge Administration Building, Room 105, on or before September 20, 2013 to complete the appropriate form and meet with Laree Winer to understand fully the impact of the restriction. This restriction will remain in effect until the 10th day of the fall semester of the next academic year, unless you revoke it in writing.

Nokia Price Since Microsoft Announcement Sept. 3, 2013



Microsoft gambles big on Nokia

By WINSTON ALDER
Business and Ads Manager

Microsoft has had its busiest summer in years, with multiple headline-capturing stories over the last few months.

On July 18, Microsoft took a more than \$900 million write off on its Surface RT tablets. This was quickly forgotten, however, as CEO Steve Ballmer announced his retirement on August 23. This too was quickly overshadowed by bigger news.

On Sept. 3, the once biggest corporation in the world bought the once biggest phone maker in the world, with Microsoft acquiring Nokia's Smart Devices unit.

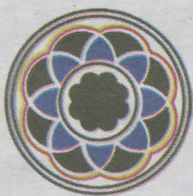
So Microsoft now owns the manufacturing, design, distribution, sales and marketing teams that used to be Nokia's mobile phone business. This \$7.17 billion deal may cement Microsoft's direction just when it needs to change.

Markets reacted overwhelmingly positively to the news of Ballmer's exit, driving Microsoft's shares up 7.3% on Aug. 23. But this was quickly erased with the news of the Nokia acquisition.

As Tim Schwartz, money manager, said in a Bloomberg phone interview, "the perception is that this is going to be a continuation of the old management and old-school Microsoft mentality."

By making such a huge move before his retirement, Steve Ballmer has committed Microsoft to a path before his successor even has a chance to be hired.

Redmond's future is now even more tightly tied to the failing Windows Phone business than before. While statements from Microsoft say the Nokia business unit will help it make more money off Windows Phones, it first needs to sell a few of those phones. Good thing Redmond is still sitting on a mountain of cash (\$70+ billion). At least, Nokia shares are soaring.



THE MOORING MAST

Pacific Lutheran University
12180 Park Ave S.
Anderson University Center Room 172
Tacoma, WA 98447

EDITOR-IN-CHIEF
Jessica Trondsen
mast@plu.edu

BUSINESS & ADVERTISING MANAGER
Winston Alder
mastads@plu.edu

NEWS EDITOR
Alison Haywood

A&E EDITOR
Kelli Breland

BUSINESS EDITOR
Bjorn Slater

OPINION EDITOR
Ashley Gill

SPORTS EDITOR
Sam Horn

SENIOR COPY EDITOR
Kels Mejlaender

ONLINE EDITOR
Leah Traxel

MAST TV
GENERAL MANAGER
Storm Gerlock

NEWS @ NINE PRODUCER
Allison Reynolds

ADVISERS
Cliff Rowe
Art Land

POLICIES AND PROCEDURES

The responsibility of *The Mooring Mast* is to discover, report and distribute information to its readers about important issues, events and trends that impact the Pacific Lutheran University community.

The Mooring Mast adheres to the Society of Professional Journalists Code of Ethics and the TAO of Journalism.

The views expressed in editorials, columns and advertisements do not necessarily represent those of *The Mooring Mast* staff or Pacific Lutheran University.

Letters to the Editor should be fewer than 500 words, typed and emailed to mast@plu.edu by 5 p.m. the Tuesday before publication. *The Mooring Mast* reserves the right to refuse or edit letters for length, taste and errors. Include name, phone number and class standing or title for verification.

Please email mastads@plu.edu for advertising rates and to place an advertisement.

Subscriptions cost \$25 per semester or \$40 per academic year. To subscribe, email mast@plu.edu.

An introduction to Mast Media

By JESSICA TRONDSEN
Editor-in-Chief



In the spirit of orientation, it's time for introductions.

We are Mast Media, your on-campus student-produced news source. Mast Media is the converged efforts of *The Mooring*

Mast — Pacific Lutheran University's award winning student newspaper — and Mast Student Television, the on-campus video production learning lab.

Mast Student Television and *The Mooring Mast* have been around for a pretty long time — 41 and 90 years respectively, but more on that in a minute. However, like many of you, we're also trying to find our place on campus.

Two years ago, *The Mast* and Mast TV operated as separate endeavors. Every week *The Mast* published a new edition of the paper and the TV station would air an episode of News @ Nine, the weekly news show. The two outlets worked independently to assign, produce and publicize content.

Eventually, we decided to pool our resources, embarking on last school

year's trial run of merged production. In that time, we've experimented with how to best serve an active campus with diverse needs, as well as foster a sustainable method of participation in student media.

And that's where Mast Media was born.

From this point forward, all content created by both *The Mast* and Mast TV can be found on one website, <http://mastmedia.plu.edu>. Here you'll also find classroom content under the LuteTimes' header, as well as plenty of online-only content that is updated daily.

We're no longer a once-a-week production. The print issue will still come out Friday morning and News @ Nine will still air news every Thursday at 9 p.m. But when something happens Friday night, you won't have to wait seven days to hear about it from student media.

For more information on our website, check out the page 3 article by our online editor, Leah Traxel.

Another new addition this year is our Business section, where we will inform you of national trends and provide insight on resources you can use during your inevitable job hunt. For more on the section, see the piece by our business editor, Bjorn Slater, on page 4.

This issue of *The Mast* hopes to serve as your introduction to campus. It's a little shorter in length than our standard

issues will be, which will start to hit stands Sept. 20.

But we aim for all of our content to be of use to everyone within the PLU community, from clubs to get involved with on campus to how to talk to your academic adviser or how to be a great Lute fan.

Beyond the website and new potential for content, *The Mast* is celebrating a milestone this year: 90 years of publication. In the upcoming year, we will be celebrating our anniversary with all of you. We're hoping our makeover and updates ensure at least another 90 years of serving this community.

If you'd like to get involved with Mast Media, please be in touch.

There is information on our website, <http://mastmedia.plu.edu>, as well as on our Facebook page, about how to volunteer, get paid, place an ad, share a tip or write a letter to the editor. Don't hesitate to contact us via email at mast@plu.edu or masttv@plu.edu for more information, either.

And if you just want to follow along, that's great too. You can find us on Twitter at several different usernames, including @PLUMast and @maststudenttv.

Welcome #newlutes and #welcomelutes. We are excited to call you our audience, and we sincerely hope our place on campus continues to be on your screens and in your hands.

Please
recycle your
copy of
The Mooring Mast



ASPLU AT A GLANCE

By BRITTANY JACKSON
ASPLU PR Director

Associated Students of Pacific Lutheran University (ASPLU) is the elected voice of the student population. The organization's goal is to inspire and represent the PLU community through living out the mission statement of voice, vision, and action.

ASPLU seeks to positively impact PLU through work done by the senate and planning events throughout the year.

As the only voting members of the organization, the senate encourages students to offer feedback about PLU and represents their voices during senate meetings and the legislation process.

Past senate projects include

passing a joint resolution with the Resident Hall Association in support of gender-neutral housing, organizing Take Back the Tap and installing blue emergency phone stands throughout campus.

ASPLU also works to plan events each year such as Homecoming, the major spring music festival, LollaPLUza, and teams up with the Diversity Center for Diversity Week.

The opportunity to volunteer on a planning committee is always available and welcome.

If interested in running for senate, there are a number of open positions, and there will be an interest meeting in the Anderson University Center room 133 on Monday at 7 p.m.

Elections will be held Sept. 26 and 27.

Visit <http://plu.edu/asplu>
to get involved

Ten things I wish I knew as a first-year

By ASHLEY GILL
Opinion Editor

Getting caught up in all of the excitement of college is normal. Last year when I came to campus, I wish I had known the following:

1. There are always people to meet

If you do not click with your wing mates or if you commute and find it difficult to make friends, that is okay. The clubs, intermural sports, activities and events may be a little intimidating at first, but they are a great way to get involved. Don't wait until junior year to realize how many people you could have met or how many things you could have participated in during your years at Pacific Lutheran University.

2. Use the resources on campus

If not for better understanding and better grades, using resources like the Writing Center and Academic Assistance, gave me peace of mind. No matter what

my grade ended up being on a particular assignment, I knew that I had done everything I possibly could have done. This felt a lot better than beating myself up about not getting a perfect score.

3. Talk to professors

Take advantage of office hours and start a conversation. It is a great way to build connections on campus. This can come in handy when you are looking for jobs in the future or even when you are just in need advice.

4. Studying away is possible

PLU makes it easy and affordable to travel, but start looking into it as soon as possible, even if you are thinking of studying abroad a year from now. After winter break, the process starts passing by very fast and spots fill up quickly.

5. Protect your LuteCard

I went without a LuteCard holder for a weekend and ended up losing it twice. You need your LuteCard for practically everything on campus and it is so easy for

it to slip out of your pocket. It can be a lot better to invest in something for your card now than pay to replace it or have to get it reactivated.

6. You don't have to buy new books

Buying textbooks used, renting them or finding them cheap online are great options and can save you hundreds of dollars. Be aware, however, there will be times when new books are required, normally because it is an original textbook written by your professor or the book may include electronic additions.

7. Sit in the front row

It is an easy way to immediately be noticed by professors, and you can avoid being distracted by your classmates. You will always be able to hear the professor and see the board.

8. Don't go print crazy

The amount of money we are given for printing seems like it will last forever, but it is gone before you know it. Even if you are not in any writing classes, by the

end of the semester, you will be rushing to the concierge desk and digging into your pockets for just enough change to print that final paper due the next morning.

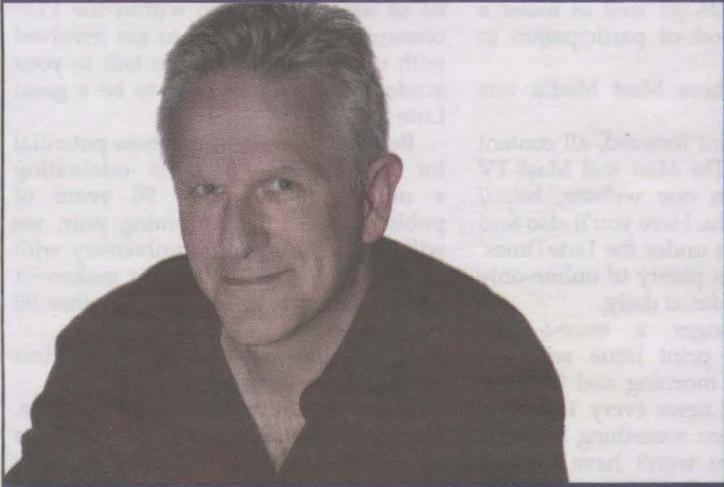
9. Say no to on-campus extras

Many of us are away from home and don't have our parents supplying us with food anymore. While the school does provide wholesome options, it is up to us to decide not to eat pizza every meal. It can be difficult to not give in to the entire freezer case of Ben & Jerry's or not take full advantage of the all-you-care-to-eat meals. But it is important to find a good balance between the things we love to eat and the things our parents love us to eat.

10. Don't give up

There will come a point when you are so overwhelmed that the community college in your hometown is looking pretty nice. You will be proud you got through those stressful times though. It does not happen often, but there are occasional bumps to get over. Just remember hard times will not last forever, and it will get better.

United for Quality Education



When I first pursued a job teaching voice at PLU, I did so because of PLU's excellent reputation as a music school. I also wanted to establish a long-term, sustainable employment relationship, with job security and possibility for growth as a teacher and professional. So I also pursued this job based on those objectives, which I thought were shared with PLU, based on the University's stated policies. Unfortunately, stated policy did not always translate into actual practice. I and my colleagues deliver consistent high-quality instruction to our students. I, like so many of them, want to have a stake in this community of higher education, and not be treated like a glorified temp.

Glenn Guhr

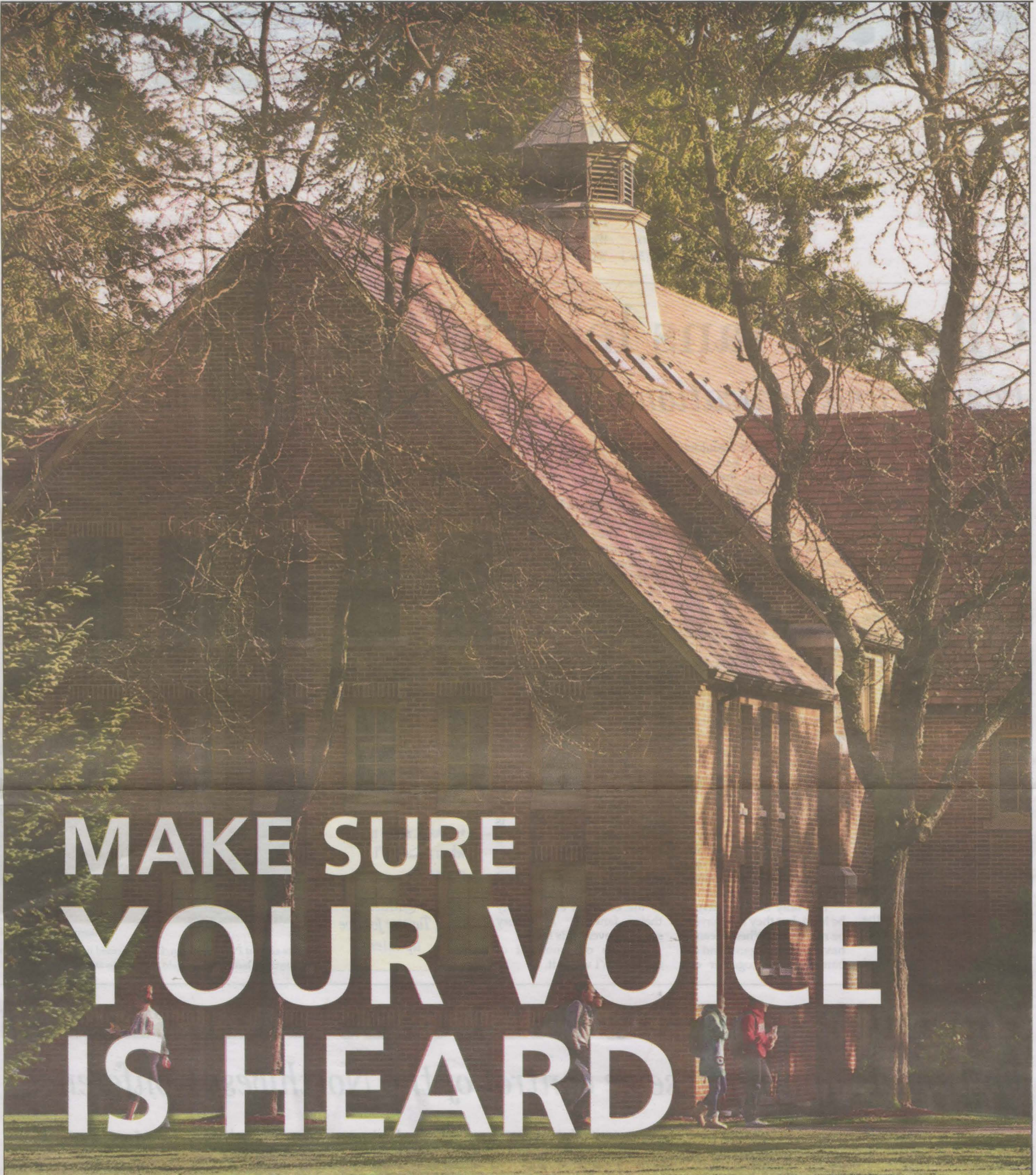
I support a union, because it would not only give us the means to improve our working conditions, but also raise the standards for all faculty and students. With a fair and democratic union vote, PLU can continue to move forward in fostering the values it hopes to represent—quality education, thoughtful inquiry, and service to others.



RESPECT



acttogetherwa.org



MAKE SURE YOUR VOICE IS HEARD

Our Campus
Our Culture
Our Mission

This month, certain contingent faculty at PLU will receive a ballot in the mail from the National Labor Relations Board asking if they wish to be represented by a union. To everyone who receives a ballot, please vote. You will be affected by the outcome of this election whether you vote or not.

Your ballot must be **received** by October 10. The outcome of the vote will be by simple majority of votes cast. Make sure your voice is heard.

For more information go to:
www.plu.edu/unionfaq



SPORTS SCHEDULE

Football

Upcoming Games

Sept. 14 at California Lutheran, noon
Sept. 21 vs. Redlands, 12:30 p.m.

Previous Games

No previous games

Volleyball

Upcoming Games

Sept. 14 vs. Concordia College, 4 p.m.
Sept. 20 vs. Pacific, 7 p.m.

Previous Games

Win (3-0): Sept. 7 vs. Ohio Northern
Loss (3-2): Sept. 7 vs. Washington (Mo.)

Men's Soccer

Upcoming Matches

Sept. 13 vs. Southwestern (Texas), 5 p.m.
Sept. 14 vs. Hardin-Simmons, 7 p.m.

Previous Matches

Win (3-0): Sept. 6 vs. Wisconsin Lutheran
Win (4-0): Sept. 8 vs. Evergreen State

Women's Soccer

Upcoming Matches

Sept. 14 vs. Puget Sound, noon
Sept. 22 at Pacific, noon

Previous Matches

Loss (2-1): Sept. 7 at Occidental
Win (2-0): Sept. 8 at Whittier

Cross Country

Upcoming Meet

Sept. 14: Sundodger Invitational
Women - 9 a.m./ Men - 9:45 a.m.

Previous Meet

Aug. 31: UPS Invitational
Women's XC (second), Men's XC (third)

Cheerful fans lead to teams' success

Passion and dedication are vital in being a world-class fan

By **SAM HORN**
Sports Editor

It was the moment of truth. For the Pacific Lutheran University football team, this was the chance to win its sixth game of the 2010 season.

Tied 28-28 with crosstown rival Puget Sound with one second remaining in the game, seasoned PLU kicker Rich Isett looked onward towards the goal posts. Isett, who graduated from PLU in 2010, warmed up his leg as he stepped onto the field.

With time winding down, Isett leaned into the kick. The ball left his foot faster than the eye could blink, sailing end over end and soaring through the goal posts. The kick would've easily been good from 60 yards out.

With that kick, PLU had won its sixth game of the year and looked unstoppable. The field goal was PLU's first game-winning kick since November 1989. After successfully converting the game-winning kick, Sparks Stadium was cacophonous.

Fans left and right went

ballistic. They couldn't believe what had just happened before their eyes as Isett celebrated with his teammates at midfield.

The PLU football fan base is extraordinary. These fans should get paid. They're that good at what they do. They're professionals. Many sports fans aspire to become legendary like the PLU faithful, but few ever reach the pinnacle in professional fanning.

Yes, "fanning" is a word now.

In order to become a great fan, one must have a desire to yell - a lot. It doesn't matter if you're watching a pee wee soccer game or a PLU football game. Loud and cheerful fans are what motivate players to excel on the field.

Except for golf. Golfers are certainly a different breed of athlete. They really need all that silence to hit a solid drive. Whatever works I guess.

Not only do fans have to be loud, but they also have to be respectful. When a team is having a rough game and can barely scrape together any

points, the worst thing that can happen is when its fan base starts booing and leaves the stadium.

Fans need to be a source of encouragement to their team. They also need to be loyal if they want their team to stand a chance of winning. They can't just get up and leave.

Fans have to give their team a chance and stick around until the end of the game. The golden rule of fanning is to show your beloved team that you care about them.

This year at Pacific Lutheran University, students have much to be excited about.

The PLU football team is slated to finish in second place in the Northwest Conference this fall. The women's soccer team is coming off of its first winning season since 2006.

The PLU fan base has something to look forward to this fall. PLU should rise to the occasion and display their fanning at every sporting event this fall?

This is our moment of truth. Don't waste it.

What makes a good fan? Sam says:

- Wear black and gold, no matter the sporting event.
- If your voice is hoarse at the end of the game, then you've done your job.
- Be respectful. Athletes hate it when you don't support them.
- Don't make noise when noise isn't necessary.

Follow @MastSports
on Twitter for live updates

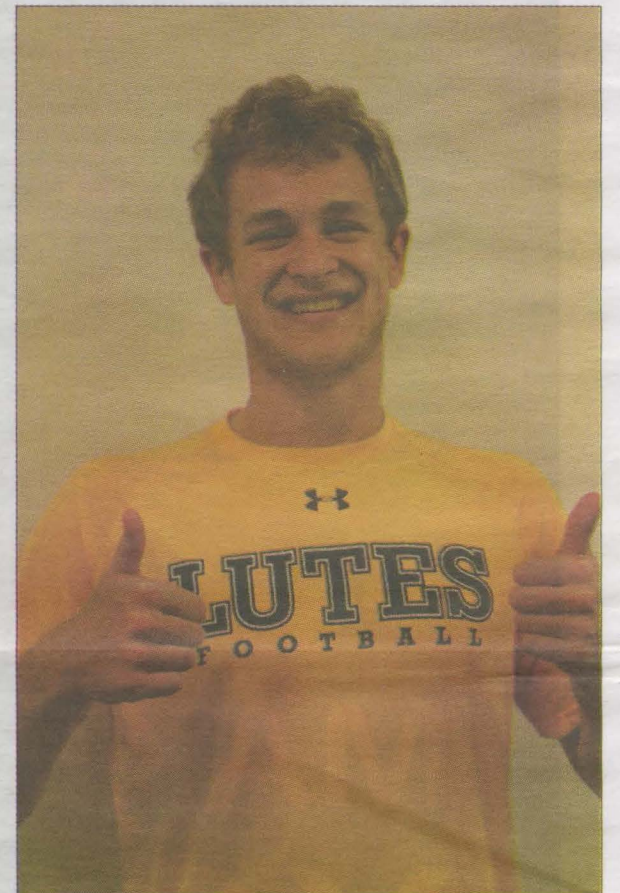


PHOTO BY ALISON HAYWOOD

As an avid PLU sports fan, I have deemed it unacceptable to wear anything but black and gold. It's OK to show off your pride.

PREDICTIONS FOR THE LUTES' FALL SEASON

Fall sports aiming to seize control of the Northwest Conference

By **NICK BARENE**
Guest Writer

FOOTBALL

Pacific Lutheran University's football team is entering the season with high hopes. They posted a 7-3 overall record and made an appearance in the NCAA Division III national playoffs for the first time in 11 years.

Sixteen are returning starters from the 2012 team, including captain Mychael Tuiasosopo, senior, who earned second team All-American honors last year as a defensive tackle.

The Lutes are poised for success as they boast three pre-season first-team All-Americans with Tuiasosopo, wide receiver Kyle Warner, junior, and offensive guard Chris Edison, a senior. Senior Jordan Patterson, a linebacker, received second-team honors.

The team has been ranked 13th in the nation by <http://www.d3football.com/landing/index>.

Predicted record in 2013: 8-2

MEN'S SOCCER

The men's soccer team has finished in the top half of the Northwest Conference table every year since 2003.

The 2012 squad continued that winning tradition with a strong 9-4-1 record, good for second place in the NWC. This season, the Lutes will look for leadership from first-team All-NWC selections forward Derek Johnson and midfielder Giancarlo Santoro. Both players are seniors.

Johnson co-lead the team last year with nine goals.

Predicted record in 2013: 10-3-2

WOMEN'S SOCCER

After finishing sixth in the NWC with a 4-5-7 (6-5-7 overall) record, the women's soccer team will look to improve its place in the table. A pre-season poll predicted the Lutes to finish fifth in the conference, which would be their highest finish in 7 seasons.

The Lutes will look to rebuild

with their young players, led by sophomore Lauren Larson who scored a team best nine goals and was selected to the All-NWC Second-Team. A revamped coaching staff will aid the team in its quest for a top-of-the-table finish.

Predicted record in 2013: 9-7-2

VOLLEYBALL

The women's volleyball team had a stellar 2012 season. They qualified for the NCAA tournament, won the Northwest Conference Championship, and finished with a 20-6 record.

The team will enter the 2013 season ranked 21st in the nation and will look to continue its success from the previous campaign. However, the team has loftier aims than just a pre-season ranking.

"The ranking is the last thing on our mind," said setter Samantha North, a junior. "We take one step at a time to accomplish our goals."

North and teammate Bethany

Huston, a senior, were both awarded AVCA All-America honors.

Predicted record in 2013: 22-4

CROSS COUNTRY

The cross country team will rely on the strength of its talented returners, and invest hope in a large class of incoming runners.

Lauren Knebel, a sophomore, and Alan DenAdel, a senior, both advanced to the NCAA West Region Championship in 2012. The Lutes are already off and running in 2013 with DenAdel and sophomore Amanda Wilson each taking third place at the Puget Sound Invitational.

DenAdel won the Apple Ridge Run at Central Washington University on Sept. 7.

The Lute women took second place in the team standings with 39 points while the men took third place with 61 points.

Predicted number of regional qualifiers in 2013: 4

MEN'S GOLF

In 2012 the men's golf team finished in fourth place in the NWC, scoring 21 out of 32 possible points. Dustin Hegge, a senior, earned second team all-conference honors after finishing as the 2012 NWC Player of the Year. The men's golf team will begin their season on Sept. 22 at the Mary Hardin-Baylor Fall Intercollegiate tournament.

Predicted men's 2013 placing: third

WOMEN'S GOLF

The women's golf team finished in fifth place in its 2012 campaign. The team is reloaded for 2013, as it did not lose any players to graduation and will look to use its experience to aid them in the quest for the NWC title. Junior Kristina Norlin will look to continue her dominance in NWC play after averaging 89 strokes per contest last year.

Predicted women's 2013 placing: third