

Heisler, Lennon Join Staff



JOHN LENNON



MARY K. HEISLER

Two administrators have been appointed to Pacific Lutheran University's office of student affairs to work with the school's residence halls.

John (Bill) Lennon, a former Westport, Wash., teacher and coach, has been hired as director of men's residence halls, and Mary K. Heisler of Wooster, Ohio, has been appointed assistant dean of women and head resident of Harstad Hall.

Lennon comes to PLU from Atlanta University in Atlanta, Ga., where he was working towards a master of arts degree in counseling. Prior to returning to school he had taught and coached at Oosta High School in Westport.

He attended Stetson University, Deland, Fla., Colorado College, Colorado Springs, Colorado, and received his bachelor of arts from PLU in 1962. He later did graduate work at the University of Southern California.

Lennon is married to a PLU graduate, Patricia Funkhouser. They and their son will occupy a suite in the University's new high-rise dormitory.

As an assistant dean, Miss Heisler will plan and initiate an in-service training program for resident hall counselors and will assist in advising several women's organizations. In addition, she will be head resident of Harstad Hall.

An Ohio native, Miss Heisler graduated from Wittenberg University in 1965 where she was active in student organizations. At Ohio University she was an assistant resident director. She is a member of the American Personnel and Guidance Association, and the National Association of Women Deans and Counselors.

USSAC Opens Year; Tutoring Program Set

Formed last year, through the initiative of several hard-working, determined PLU students, USSAC, the University Students' Social Action Committee is planning another year of involvement for concerned students.

USSAC's main initiative is in tutoring children in the Tacoma area. TACT, Tacoma Area Child Tutoring, has been formed as a part of USSAC.

From 600 to 700 applications have been sent out to prospective tutors throughout Tacoma in cooperation with the Tacoma Public Schools and approximately 200 responses are expected.

Tutoring sessions will be held every Monday, Wednesday, and Thurs-

day from 6:30 to 9:00 p.m.

Each tutor volunteer will be assigned to one child with whom he will work for an entire school year. The tutees will come primarily from low income homes and in many cases will have little or no parental encouragement. Most will be in grades 3-7 though some will be high school students.

Once committed, the tutor is expected to work at least one 2-hour session a week and contact his tutee's teacher at least once a semester.

A meeting for all students interested in joining or learning more about this program will be held Saturday, Oct. 7. Information concerning the exact time and place will be available at a later date.

Kingsmen Sweep Past Knights

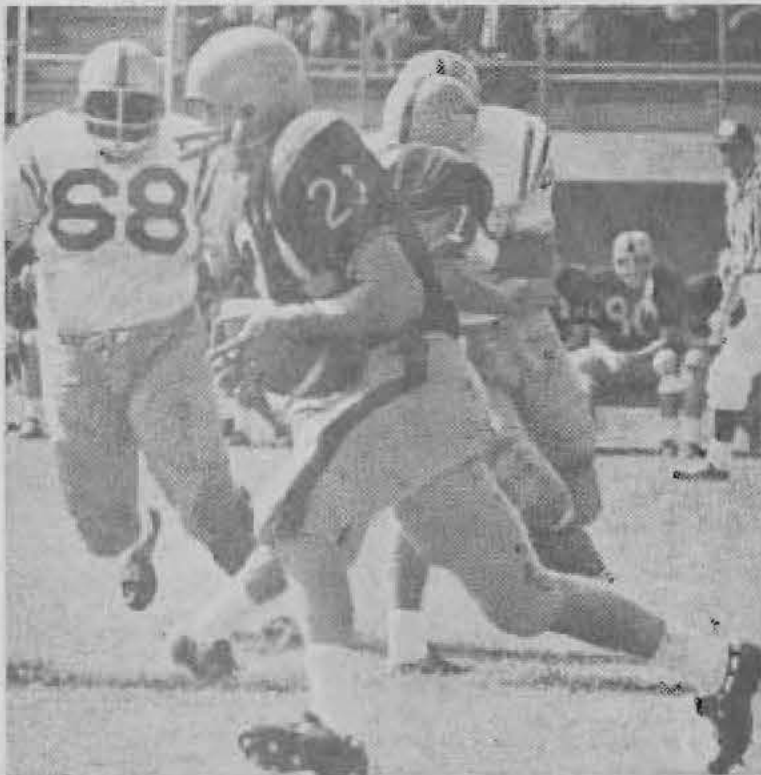
PLU's gridmen dropped the season opening game for the fifth year in a row, a record of sorts, this time to California Lutheran College by a score of 20 to 8. A lack of continuity, bad luck and a weak passing game sums up PLU's performance.

Yet the Knights were not beaten as badly as it seems, for they actually outplayed CLC on the ground with 172 net yards to CLC's 166. Lack of success on key fourth down plays held the Lute offense scoreless, leaving it to the defense to keep PLU in the game.

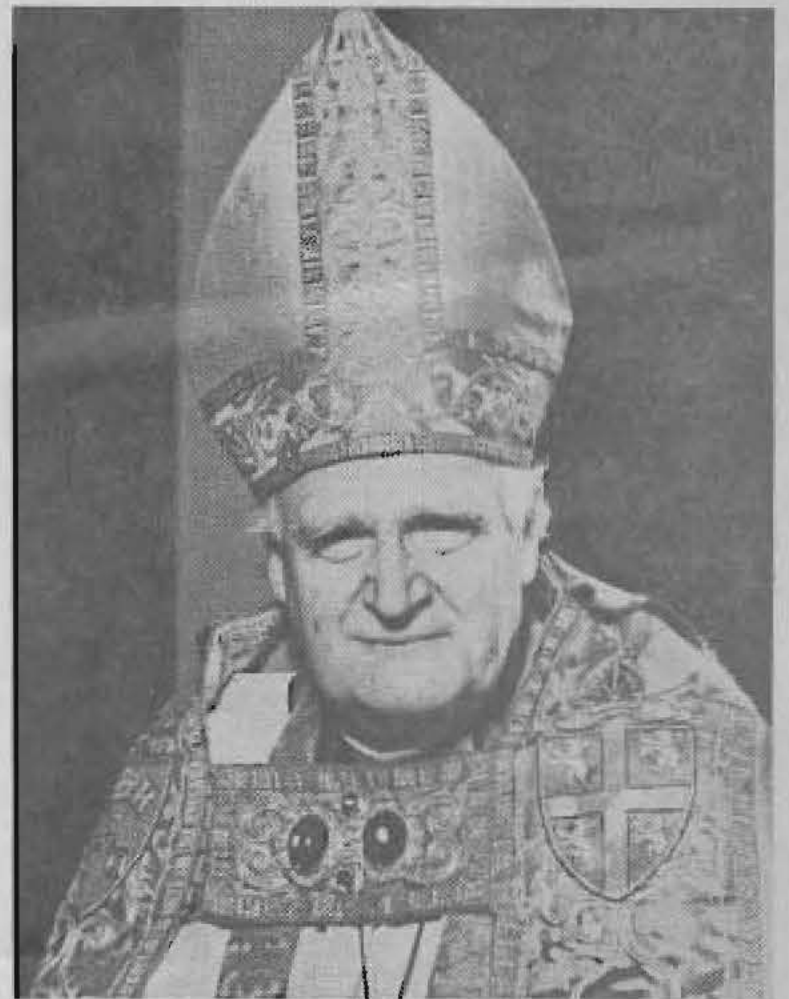
CLC opened the scoring late in the first quarter with Joe Stouch's 36 yard run. The PAT was good, giving CLC a 7-0 lead. Ken Harding returned the kick-off 24 yards but the Lute drive faltered.

In the second quarter CLC mounted a sustained drive which ended with Stouch scoring on a two-yard run. Later in the quarter, after an exchange of punts, CLC scored again on a 40-yard blocked punt to make the score 14-0. Doug Jensen returned the kick-off 19 yards but the Knights failed to keep the ball and CLC took.

(Continued on Page 2)



FRESHMAN HASFLER Matt Lindstrom, lines off through the line against California Lutheran as Bob Lovell delays a CLC lineman. Lindstrom was the leading Lute ground gainer in the Knights' opening season loss to CLC.



THE ARCHBISHOP OF CANTERBURY

PLU Hosts Archbishop; Honorary Degree Given

The Archbishop of Canterbury, Dr. Michael Ramsey, received an honorary Doctor of Divinity degree Sept. 22 at Pacific Lutheran University.

The honor was bestowed upon the leader of the Church of England at PLU's first official convocation of the academic year.

President Robert A. L. Mortvedt said that the University's board of regents and faculty decided to confer the degree upon the Archbishop in recognition of his great service to all Christendom.

The church head arrived in the United States on Sept. 12 for an ecumenical service in New York City. From there he went to Chicago to meet with church leaders.

Orientation Week Introduces PLU To New Students

by Chris Beahler
MM Feature Editor

"I liked all of it but I was glad when it finally let up."

This reaction, in reference to Freshman Orientation Week, was shared by a great many of the approximately 640 freshmen admitted to PLU for this fall semester.

Friday marked the end of a long week—one that has been in the planning stage since spring semester of the last school year. At this time Dorcen Davis and Jim Widstrom were appointed chairmen of the Orientation committee. Faculty members included Dr. Williamson and

(Continued on Page 2)

His tour brought him to Seattle where he addressed the general convention of the Protestant Episcopal Church. His visit to the United States will end in New York City on October 5.

The British ecclesiastic is a graduate of Repton School, Magdalene College, Cambridge, and Cuddesdon Theological College, all in England. As an educator and churchman he has served as president of the World Council of Churches, and has received numerous honorary degrees and citations.

A noted author, the Archbishop's latest books include "Canterbury" Essays and Addresses," and "Sacred and Secular."



THE RE-DECORATED THEATRE OF WORSHIP with an impressive set of special effects, lights and a psychedelic paint job held its Grand Opening last Friday night.

Changes Pose a Challenge

Once again the *Mooring Mast* has rolled off the presses to extend a belated "Welcome Home," or in the case of the freshman class, "Welcome to PLU." With the auspicious changes that have taken place in the realm of student affairs (ranging from swinging house parents to revised women's standards) the year seems to be getting off to a good start. Time alone will tell how new programs, personnel, and procedures will work out in practice. At first glance they seem promising and the Office of Student Affairs is to be commended for their efforts.

Student government also promises a fruitful year. Changes which have taken place in the coffee shop, the Diet of Worms, will be a pleasing surprise to most. Other student-run programs are being planned and executed with a good deal of efficiency.

Though attempts have been made to alter our nickname, the *Mooring Mast* will again assume the role as "voice of the students of PLU." As such the staff welcomes, indeed requests, your comment or criticism of the attitudes, opinions, or general content of the paper. Letters to the editor or verbal discussions with the staff help convey your attitudes concerning various issues on campus. Your silence is a vote of approval.

Due to the efforts of many people in various positions throughout the University community, the groundwork is laid for what can be a year of spiritual and intellectual growth for all. Your participation, concern, and awareness can make it so.

—C. Zipperian



THANKFUL FOR GOOD WEATHER, thousands and many hundreds of others participated with you in the annual outdoor registration—otherwise known as registration. Some last and winter's group were to be found among all levels of the student body, which completed registering Wednesday.

Passing Game Defeats Lutes

(Continued from Page 1)

over. Then with almost five seconds remaining in the first half, Skip Miller scored a CLC first pass and dished 83 yards for the late Lute touchdown.

The Knight defense toughened up in the second half, containing CLC's offense and forcing a safety. PLU's ineffectively passing game continued to hamper the Lute offense with the result that CLC led in total offense 277 yards to 206.

Some hope for a winning season remains, however, on the basis of strong performances by freshman Hans Lindstrom and junior Fred Moe on offense and Bill Tye and Al Fretzel on defense.

Year Promises Varied Activities

Beyond the challenge and adventure of their college courses, students can look forward to a new and exciting extra-curricular year at PLU. Members of ASPLU committees have been actively planning a variety of programs which promise to

make life here a more fascinating, socially creative experience.

The first Expression Series of popular entertainment concerts will feature the "Seekers" September 30. Two or three more popular concerts will be scheduled through the year.

Artist Series' major presentation will be the November 27 appearance of the Roger Wagner Choral. Other features are: Fred Wayne, the Oklatochey Ballet Classique, the Radio Orchestra of Canada, and monthly art exhibits in the Library.

Homecoming November 2-4 will present Ray Charles in concert. The Homecoming dance will be held off campus at the Tacoma Mall. Bruce Eklund and Diana Oas are co-chairmen of the affair.

For weekend emotional release, eight all-school stumps are on the schedule with an option for more if they are needed.

USSAC—University Student Social Action Committee—under the direction of Chris Anderson, has ambitious plans for involvement in the

Tacoma area. Presently PLU has a proposal pending with the Office of Economic Opportunity for an extensive tutoring program. USSAC hopes to establish eight tutoring centers in lower-income areas of Tacoma. Two hundred tutors are needed from PLU.

Student government has undergone a few changes. The ASPLU President, Stan Simonsen, has given the investigatory powers to Legislature. The Corner Office in the CUB will be a communication center where students can find out what is happening on campus and in the Seattle-Tacoma area. For the first time, students will be sitting in on a number of faculty committees.

Organization of the men's residences has been changed by the Office of Student Affairs. The new Men's Residence Council composed of representatives from each living unit will have the powers of setting and enforcing policy in the men's dorms. Residence Assistants will be on duty from 7:00 p.m. until 7:00 a.m., to be more available to help students.

Orientation Introduces Frosh to PLU

(Continued from Page 1)

Dr. Reigstad, Ed Peterson served as Breakfast Chairman and Freshman Activity Night Chairmen were Kris Swengel and Gary Brandel.

Highlights of the week began Sunday night when Student Congregation presented "Exposure and Encounter," a play written by PLU alumnae for Aallun. President Robert Moevick addressed new freshmen Monday morning and Monday afternoon the keynote address was delivered by Rev. David Wold.

Freshman discussion groups this year read "Of This Time, Of That Place," a short story by Lionel Telling, dealing with the values of education. Tuesday morning a faculty panel including Dr. Paul Reigstad, Mr. Judd Douglas, Dr. Joseph Anderson, and Dr. John Schiller gave a presentation of the story.

Tuesday evening the freshmen groups participated in the annual

Faculty Home Visitation. Wednesday night a Freshman Activity Night was held in the gym.

A Faculty Reception for new students was held in Chris Knudsen from 7:30 until 9:00 p.m. This was followed by entertainment and refreshments for all new students in the

women's dorms at 10 p.m.

Several events are still scheduled. Friday, Sept. 29, "An Invitation to Creativity," a student production will be presented in Eastvold at 8:15 p.m. The following night, Saturday, Sept. 30, the Seekers will perform in concert in the gym.

Joffrey Ballet Conducts Dance Workshop on Campus

In an unique five-week experiment, the PLU campus was the summer home of the widely acclaimed City Center Joffrey Ballet. This was the first summer residency that the group has conducted on a college campus. In the past, preparations for a new season had been conducted in major cities.

Besides developing a new repertoire, the ballet company ran a training program for forty 13- to 19-year-old ballet students from the Northwest. For rehearsals, the Joffrey company utilized the gymnasium and Eastvold Chapel, while the students used the Columbia Center dining hall. At the end of its residency, the Joffrey Ballet presented five highly successful performances in Eastvold Chapel, including the world premiere of *Cello Concerto*.

The summer residency was made possible by the cooperation of the Pacific Northwest Ballet Association, which helped underwrite the cost, and PLU, which made its facilities available.



JOFFREY BALLE



Late Rowing Club Meeting Scheduled

For all men interested in the sport of crew the Late Varsity Rowing Club will hold an orientation meeting on Tuesday, September 26, at 7:30 p.m., in CB-200. Films and slides of crew, including some actual racing footage from one of the club's meets will be shown. Afterwards there will be an informal social hour with refreshments served.

Mooring Mast Needs Workers

All persons interested in participating in the noble calling of journalism, i.e., working on the *Mooring Mast*, are invited to attend an open meeting Tuesday, Sept. 26, in the CUB lounge. The meeting will begin promptly at 7:00 p.m. and ALL persons, experienced or otherwise, are welcome.

The activities, the spirit, the major issues in which a student is immersed on a University campus usually remain complete mysteries to his parents.

The student newspaper at PLU volunteers to clear up the mystery. The *Mooring Mast* is published every Friday of the school year, except for holidays and examination periods. The *Mooring Mast* is a student newspaper written from a student's point of view about the events and ideas which are most significant to the student of PLU. As such it is perhaps the most accurate reflection of student life at PLU.

This issue presents but a brief example of the type of journalism which will fill the forthcoming issues. Editorials, columns, and a selection of feature stories are combined with general news coverage to make the *Mooring Mast* the "Voice of the Students at Pacific Lutheran University."

Subscription rates are once again \$2.75 per semester or \$5.00 for one school year for a 6-8 page weekly publication. We sincerely invite both our former subscribers as well as new members of our University family at large to join us for what we hope will be an interesting and informative year.

Please clip the form below and send to: MOORING MAST, CUB Box 658, Pacific Lutheran University, Tacoma, Washington, 98447. (Back issues will be sent to those whose forms are received before Oct. 13).

I would like to subscribe to the MM for one school year (\$5.00) one semester (\$2.75)

Name _____

Street _____

City _____

State _____

Zip _____



A NOTABLE new addition to PLU's campus is the statue designed and executed by Harold Bossel of Mount, Wash. The work, which stands in front of Timpahut Hall, was commissioned by Tacoma architect Robert Riffenburg Price, who designed the building. Constructed of a new steel called Cor Ten, the statue will with time be covered with a dark brown layer of surface rust. The artist says that the work is an abstraction and that requires the viewer to react to it and create his own explanation of it.