

## Terry Oliver Takes ASPLU Presidency



ASPLU PRESIDENT TERRY OLIVER

### Ericksen Selected First V-P

From a total vote of 977, 46 less than last year's total of 1023, Terry Oliver won the ASPLU presidential race by 133 votes. Oliver tallied 555 votes to Wayne Saverud's 422.

Regarding his future plans for the presidency, Terry Oliver commented to the *Mooring Mast*. "Basically, I hope that we can accomplish a unification and revitalization of student government. I plan to be a president who will get out of the office and relate to students. I will have as many hours outside the office as in it."

Bob Ericksen will be the new first vice-president. He was elected yesterday by a moderate margin over his opponent, Warren Olsen. The vice-presidential vote was 529-432.

Ed Petersen was the only candidate to win by a landslide. He will hold the second vice-president's office.

In an incredibly close vote, Montel Wagner slipped past Annette Leverson to take the ASPLU executive secretary's office. The tally was 481-471. Paul Jorgensen was elected by 96 votes to the position of ASPLU treasurer.

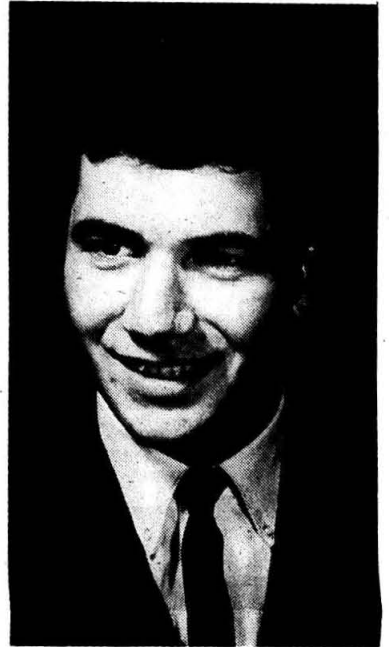
Jan Loreen, the only candidate for the office of Legislative secretary, polled 911 votes.

This year, the Nominating Committee again served as a fairly accurate indicator of the election results which followed. An incredibly accurate prediction was made in the presidential race. Fifty-seven percent of both the delegates and the general voters turned out for Oliver.

In no office were the percentage figures predicted by delegate vote at the convention different by more than three percentage points in the actual election.

Bob Ericksen received 52 percent of the convention vote, 55 percent of the actual electorate; Petersen got 74 percent in the convention and 76 percent in the election; Montel Wagner had 53 percent of the delegate votes and 50.5 percent of the student turnout; and Paul Jorgensen got 55 percent in both cases.

(Continued on page two)



FIRST VICE-PRESIDENT BOB ERICKSEN

## Demonstrations Highlight Long Convention

The second ASPLU Nominating Convention came to a halt at Saturday, April 2, as Terry Oliver took the majority of presidential electoral votes. Oliver received 124 votes to Wayne Saverud's 93. Col-

Bat Guan, who was nominated to the office on Friday by Chuck Brunner, shot himself while cleaning his gun. He was thus eliminated from the race.

Most of the nominating speeches

were followed by demonstrations.

The only office to which more than two candidates were nominated was that of ASPLU executive secretary. Linda Allen was eliminated from the race in the sudden death balloting. Montel Wagner held a

narrow lead of 10 votes over Annette Leverson, who was nominated by Conrad Zipperian. Miss Wagner, who had been nominated by Karen Knott of West Hall, received 87 votes to Miss Leverson's 77.

The convention, which took place April 1-2, was held in Memorial Gymnasium. The opening session was keynoted by Dr. Homer Hamilton, representative to the Washington State Legislature from the 26th Legislative District.

The convention's temporary chairman was Mike Cullom, ASPLU president. Cullom handled the Friday proceedings. The permanent chairman was Dr. Peter J. Ristuben, associate professor of history.

The voting was very close in the first vice-presidential race. Bob Ericksen, nominated by Curt Gannell, received 112 votes to Warren Olsen's 103. Olsen was nominated by Dave Holmquist, judicial board chief justice.

For the office of second vice-president, Ed Petersen swept past Larry Cress 155-55.

The race for treasurer resulted in no overwhelming majority for one candidate. John Cockran, nominated by Joe Aalbu, took 98 votes to Paul Jorgensen's 121. Jorgensen was nominated by Roger Stillman.

Evergreen moved that a unanimous ballot be cast for Jan Loreen for the office of Legislative secretary. The motion was passed, and Miss Loreen automatically received all 234 votes.



T. O. ALL THE WAY—The second ASPLU nominating convention was punctuated periodically by demonstrations. Here, in perhaps the largest demonstration of the convention, students are giving their vocal support to Terry Oliver.

## Neil Peck Dies While Swimming

PLU students were shocked and grieved Sunday night to learn of the death of Neil R. Peck, a sophomore pre-law student from San Leandro, Calif.

Peck was dead on arrival at Lakewood General Hospital after suffering an apparent heart attack in the PLU pool April 3.

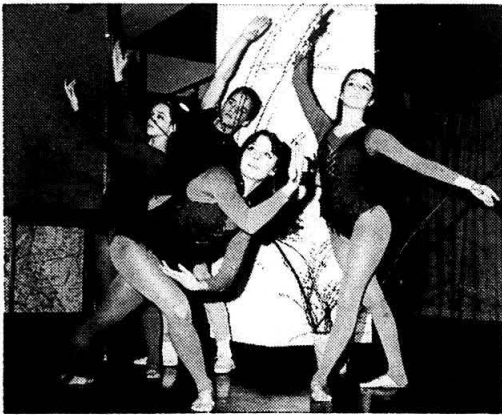


NEIL R. PECK

Coroner Larry Amundsen said an autopsy will be performed to determine whether death was due to drowning or to a heart attack.

Born in Portland, Ore., March 19, 1946, Neil was the son of Mr. and Mrs. Jack Peck of San Leandro.

Besides his parents, Peck is survived by two younger brothers, ages 10 and 12.



I COULD HAVE DANCED—A few of the 21 dancers in the Performing Dance Company of Tacoma rehearse a number. The company will perform at Eastvold Chapel, Friday, April 15, at 8:00 p.m.

## Music Students' Recitals Scheduled

by Myron Thompson

On Sunday, April 17, at 4:00 p.m., Kathryn Czyhold and Pamela Stromberg, students of Dr. R. Byard Fritts, associate professor of music, will give a music recital in Eastvold Chapel auditorium.

For this senior recital Miss Czyhold will perform organ masterpieces by the Frenchmen, Mulet and Vierne. Also included in the program is the contemporary "94th Psalm," by Julius Reubke. This piece was written when Roubke was 19 years old shortly before his early death which occurred a few years later. Brilliant toccatas, moving slow passages, and ever changing moods picture the 94 Psalm in this work. A piece by Bach will also be performed.

Miss Stromberg, a piano major, will perform compositions by Ravel and Liszt. Included also will be Frank's "Prelude, Chorale and Fugue." This piece demands the utmost from the performer due to passages written in an almost full orchestral idiom, and its length of time for performance of nearly 20 minutes.

Both Miss Czyhold and Miss Stromberg have been very active in such activities as the Concert Chorus; University Orchestra, Choir of the West, Mu Phi Epsilon, national women's music sorority; and the Organ Guild. Kathryn is the organist for the Student Congregation, is in Who's Who for seniors, and has participated in the University Singers.

Pamela has been chosen to represent PLU's Epsilon Sigma chapter as delegate and performer at the national Mu Phi Epsilon convention in Portland, Oregon, scheduled for next August. She is presently accompanist for the Collegium Singers.



2nd Vice-President Ed Petersen



Exec. Secretary Montel Wagner



Treasurer Paul Jorgensen



Legislative Sec'y Jan Loreen

## WUS Sponsors Dancers

Twenty-one young men and women will be performing with the 1966 Performing Dance Company of Tacoma at Eastvold Chapel Friday, April 15, at 8:00 p.m. They are appearing under the auspices of World University Service.

The dancers, under the artistic direction of Jo Emery, will present a varied program of classical and character ballet, as well as contemporary and jazz dances.

The group will be performing "Baroque Tribute," "Breakaway," "Hillbilly Hoedown," "Divertimante," "James Bond Jazz," and "Life Is A Danger," from their repertoire.

The contemporary ballet of the 1966 season, "Breakaway," has no direct theme but presents images and sounds directed at the viewers' imagination. "Hillbilly Hoedown" is the oldest work of the group and has

proved to be a favorite in the past.

The Performing Dance Company of Tacoma was organized in 1963 by Jo Emery who settled in the Northwest after performing in Europe. Members of the company have danced individually in musicals, ballets, and plays; many travel from Seattle and out of town to participate in the company performances.

The company has appeared in concerts throughout the Northwest, including special television programs, the Invitational Northwest Dance Theatre in Seattle, Metropolitan Park Department Summer Programs at Point Defiance, and many appearances for schools and organizations in the area.

Jo Emery makes frequent trips to Hollywood that enable her to keep aware of the modern dance trends in films and television.

## Engaged Couples Retreat Slated

Applications to the AMS-AWS sponsored Engaged Couples Retreat are available now at the information desk. The purpose of the retreat is to present such topics as understanding and adjusting to psychological conflicts, financial planning, bearing and raising a family, and placing religion in the perspective of married life.

On Friday, April 15, all participating couples will be given a compatibility test. Throughout the following two weeks, groups of three

couples will be scheduled to review and discuss the results of the tests. A program on the economic aspect, including crucial financial points for married couples, the sociological viewpoint, the family as a unit and as individuals will be presented on April 22.

The retreat itself will be held the weekend of April 29-30 at Camp Lutherand. The psychological, physical and spiritual aspects of marriage will be discussed by qualified individuals including Dr. Rieke of the

University of Washington medical school. A panel of all the speakers will present the inter-relatedness of their topics.

Each couple will be charged \$10 to cover the expenses of the weekend. The completed applications forms must be turned in to either Joe Grande (Foss 206, Ext. 1250) or Carolyn Malde (West B-19, Ext. 758) on or before Wednesday, April 13th.

## Genne To Highlight Social Life Series

The second annual Social Life Series will present the Northwest Council on Family Relations Conference, April 14-16, on the PLU campus. The event will get underway at 8:00 p.m. on Thursday, April 14, in Eastvold Chapel with the keynote address, "Tensions in Today's American Family," by Dr. William Genne, director of the Commission on Marriage and Family Life of the National Council of Churches.

Friday at 9:00 a.m. begins a series of discussions in Trinity Lutheran Church which come under the general heading of "Communication Between Husband and Wife."

At 10:45 a.m. attention will turn to "Communication Between Parents and Children."

At 2:15 in the afternoon the group will reconvene in Trinity to cover the topics, "Communication and Child Launching" and "Communication and Parents Who Face New Chapters."

The day will conclude with a banquet starting at 6:30 p.m. at the Sherwood Inn, featuring Dr. Ivan Nye of Washington State University.

The program will be wrapped up on Saturday with two more programs in Trinity at 9:15 and 10:30.

It has been suggested that those students who date seldom attend the meeting Friday at 3:30; those dating steady Thursday at 1:30; and those who are engaged, Thursday at 3:30.

Dr. Genne will speak in Chapel Thursday and Friday.

**GERRY'S  
BARBER SHOP**  
in  
**FOOD KING SHOPPING  
CENTER**  
Open: 9 to 7 weekdays  
9 to 6 on Saturdays

**NORTHWEST  
INTERIORS**

**Students and Faculty Always Welcome . . .**  
**The BROOKDALE Restaurant**  
FEATURING  
**THE FINEST STEAKS AND SEAFOOD  
IN TACOMA — HOME-MADE PIES**  
Open Mon. thru Thurs., 6-1 a.m. — Open all night  
**Open 24 hours a day, Friday and Saturday — Close Sunday night at 10**

**STELLA'S FLOWERS**  
FLOWERS  
FOR ALL OCCASIONS  
12173 PACIFIC AVE. LE 7-0206  
(Foot of Garfield St.) We Deliver

**12202 PACIFIC**

**CollegeMaster**

Fidelity Union Life Insurance Co.  
**COLLEGE MASTER**  
Guaranteed by a top company.  
No war clause.  
Exclusive benefits at special rates.  
Full aviation coverage.  
Premium deposits deferred until you are out of school.

★  
**DAVE OLSON**  
representing  
The Greatest Business in the world . . . helping others to help themselves.  
**11457 PACIFIC AVENUE**  
Phone LE 1-5121