

Lutes shoot for national title

By BRUCE VOSS

In perfect storybook style, the Cinderella season will end right where it began.

PLU's football team opened 1983 with a thrilling victory over the University of Puget Sound in the Tacoma Dome. Now, after a season of battling and beating the odds, the Lutes return to the Dome tomorrow night to play Northwestern College of Iowa for the NAIA Division II national championship. Gametime is 7:30 p.m.

While PLU had to rebound from a 3-2 record and made the playoffs only when the two District I teams ranked ahead of it lost on successive weeks, top-ranked Northwestern has rolled all season. The Red Raiders are 13-0, are leading the nation in scoring and total offense, and cruised by William Jewell 30-12 in the semifinals; the Lutes nipped Westminster 16-13 last Saturday at Lincoln Bowl.

Lute Coach Frosty Westering, though, said it's a whole new season tomorrow night.

"There's really no (quality) difference in these teams; it was just in the minds of those making the

~~~~~

### NAIA DIVISION II NATIONAL FOOTBALL CHAMPIONSHIP: "Shakey's Pizza Bowl"

Northwestern College of Iowa (13-0) vs. Pacific Lutheran University (9-2), Dec. 10 at Tacoma Dome, 7:30 p.m. Playoff records: Northwestern 17, St. Thomas 10; Northwestern 30, William Jewell 12, PLU 35, Baker 3; PLU 16; Westminster 13. Red Raiders won national title in 1973, placed second in 1972 and '79. Lutes won national title in 1980, made semifinals in 1979, quarterfinals in 1981.

~~~~~

poll," Westering said. "But it's nice to be playing an undefeated team again. All the pressure's on them."

Actually, said 16th-year Northwestern Coach Larry Korver, the two teams are very similar.

"Like PLU, we've got quite a few veterans on offense and a lot of young guys on defense who've come along as the season progressed," Korver said by phone from Orange City, Iowa,

Northwestern's hometown. The 850-student school is affiliated with the (Dutch) Reformed Church of America.

Operating out of the veer (option) offense, the Red Raiders have run a devastatingly balanced attack. Led by NAIA All-American quarterback Lee McKinstrey, they're averaging 515.5 yards a game, passing for 2,816 yards and rushing for 2,854.

"We don't have a preference for either," said Korver with a keen sense of the obvious. "We were more of a Big Play team last year (when McKinstrey threw an NAIA-record 37 touchdown passes)."

But Northwestern's 4-3 defense has been less than invincible, five times giving up 24 or more points. PLU's own mix-it-up attack, led by record-setting quarterback Kevin Skogen and fullback Jeff Rohr, may add enough offensive firepower to raise the Dome roof.

"It could be a high-scoring game," conceded Lute defensive coach Paul Hoseth. "It depends on the style of play. We'll probably defend them differently than they have been all season, and it'll depend on how they adjust."

The quick, smallish Red Raiders are averaging 41.7 points per game, best in the nation; PLU is sixth at 32.6 points a contest.

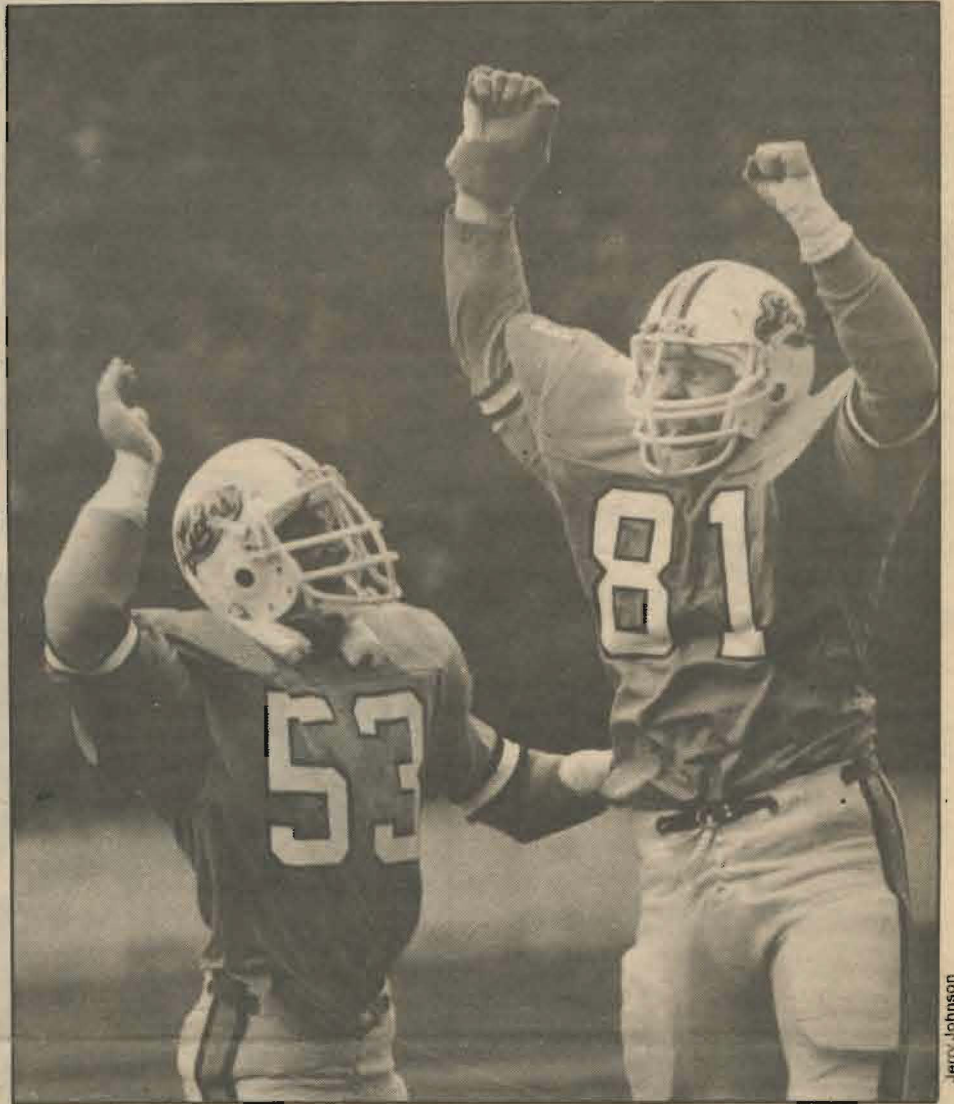
"Stopping them will take a tremendously disciplined effort," Hoseth said. "If everyone does his assigned job, (picks up his option man), we'll be all right, but if someone gets a little out of position..."

Coach Korver knows of the Lutes only by film and reputation, but said, "We have to be ready for anything. (PLU has) a great coach who's a great motivator, and I'm sure they'll be mentally ready."

Northwestern should be too, having been to the national playoffs the last two years and six times in the last 12 years.

Officially, tomorrow's game is the "Shakey's Pizza Bowl" in honor of a local Shakey's franchise owner, Fred Muenscher. Muenscher, a 1955 PLU graduate and former Lute running back, is paying all rent and service fees on the 19,106-seat Dome.

While 14,830 showed up for the PLU-UPS clash, school athletic officials are expecting a little less than half that tomorrow night. Coach Westering, though, would like to see the Tacoma crowd break the



Linebacker Mark Grambo (left) and defensive end Steve Gibbs were sky-high after Gibbs' crucial last-minute sack against Westminster.

championship game record of 9,000-plus, set in 1972 when Northwestern played Missouri Southern in Joplin, Mo.

"There's never been a crowd like the one for the first Dome game; it was so with it, so awesome," Westering said. "(This game) could be the '12th Man's Return!'"

PLU crowds have been peculiarly passive this year, but the 1,706 fans at Lincoln Bowl last week turned it on along with the Lutes in the second half.

"I guess they finally decided, 'Hey, we're in the championship series, it's time to get excited,'" defensive tackle Tim Shannon said.

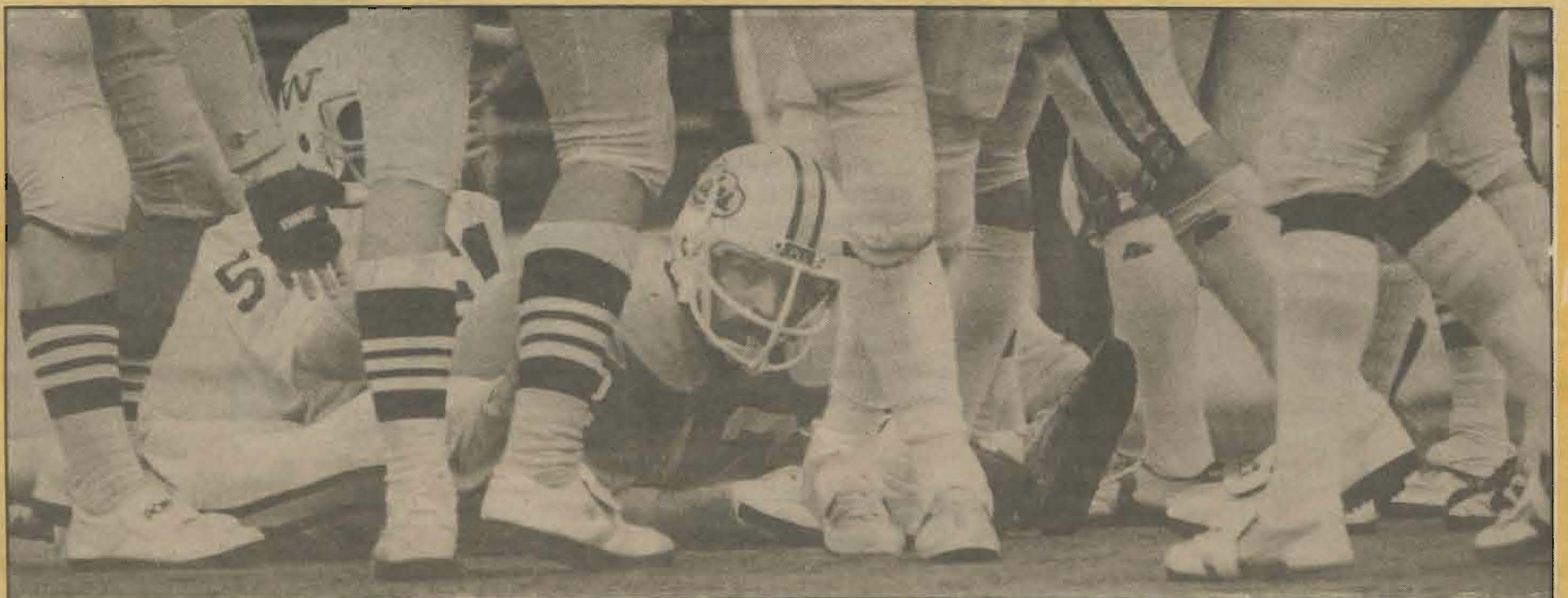
Lute rooters are encouraged to sit

facing the press box on the South side, the same area as for the UPS game. Northwestern fans, flying in on two charter planes from Sioux City today, will sparsely populate the North side.

Students who purchased their tickets before Wednesday can ride a special free shuttle bus to the game, leaving from in front of the U.C. As of Wednesday night, 880 discount student tickets had been sold.

After the game, RHC is sponsoring a victory (hopefully) party-dance in the U.C. from 11 p.m. to 2 a.m. Food and soft drinks will be provided.

Students can still get \$4 pre-sale tickets at the U.C. Information Desk. All tickets on game day are \$8.



Fullback Jeff Rohr's performance last Saturday was quite a feat: 105 yards rushing, four receptions.

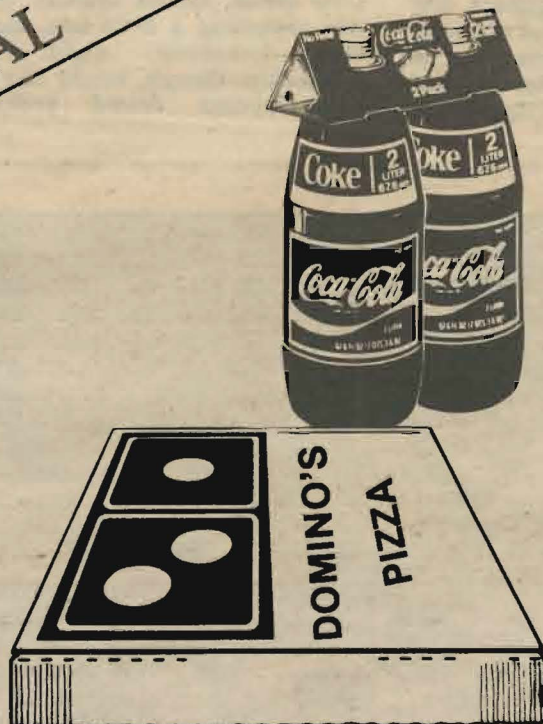
Domino's Pizza *wishes PLU's football team the best of luck in their quest for the NAIA Division II National Championship against Northwestern of Iowa.*



**MONDAY - TUESDAY - WEDNESDAY
HOLIDAY - SPECIAL**

2 two-liter bottles
of Coca-Cola free
with purchase of
any large pizza

Mondays, Tuesdays &
Wednesdays only. One
special per pizza only.
Good while supplies last



537-4611

Post-game Locker Room features shares, prayers

By GAIL GREENWOOD

It's laughter, tears, sharing and prayer.

It's chocolate-chip cookies, red delicious apples, punch and coffee.

It's football fans of all shapes and sizes gathered in the fieldhouse after the NAIA national semi-final game against Westminster.

It's the post-game Locker Room at PLU featuring the Lute football team, the players' moms, dads, little sisters and brothers, grandmas, friends, and fans...with host Coach Frosty Westering.

Fans began to gather in the fieldhouse shortly after the noon game. They ate cookies and apples and chatted with each other, but mostly they just waited.

The anticipation in the room was not unlike that of a child's on Christmas Eve.

Then cheerleader Diane Dohner encouraged the growing crowd to make a "Go Tunnel" for the players.

"When are they going to be here?" asked more than one anxious fan.

The crowd now consisting of 250 people, was sculptured into a twisting "Go Tunnel." The fans waited.

Announcements were made: "Parents of players, make sure to send your letters addressed to the team for the scrapbook...And keep in mind that the program really needs your support."

The minutes ticked away.

Then suddenly the players arrived in small bunches, jogging and walking through the Go Tunnel to the cheers of the crowd. But still no Frosty.

Quarterback Kevin Skogen strolled in and kiddingly offered the red rosebud he was carrying to cornerback Bill Brown, who rejected the feigned courtesy.

One player's mom gently wiped the eye black from under his eye as she talked with him.

But still, Frosty hadn't arrived. One sensed that the fans felt that a "Locker Room" without Frosty was like Christmas without Santa.

But then he arrived and quickly orchestrated the crowd so that people

were sitting down against the far wall.

Just as the crowd started to calm down, a quiet self-proclaimed super Lute fan, Dennis Rund of Knappa, Ore., made his way through the crowd and presented Frosty with a "Lute bear" that his wife had made. Frosty placed the black teddy bear, (complete with PLU hat, scarf and football), down for a minute facing the crowd.

While Frosty stepped away from the crowd, the bear stole the show until Frosty's 2-year-old granddaughter, Heather, popped out of the audience and stole the bear.

Frosty introduced former athletic director Cliff Olson and present director Dave Olson and told the crowd of their involvement in the PLU football program.

Frosty talked a little about the game, both the external elements and the "things going on inside the players."

"Hey, let's honor this great PLU football team," he said instructing the players to get in a semi-circle facing the crowd.

The players lined up behind him with their arms around each other's shoulders. When Frosty turned around and saw them he quipped, "We could do a Rockettes number!"

Senior linebacker Jeff Loftus, senior fullback Jeff Rohr and Bomber squad leader Dave Templin spoke briefly.

Templin explained the role of the Bombers, the PLU scout team. "We play our games all week...If the starters played really well then we take joy in that, because part of what we do is reflected in what these guys do on Saturday," Templin said.

"So, take a Bomber out to lunch or something this week," he said.

Frosty said that after the game the Westminster coach told him the Titans played against bigger and faster teams but that the Lutes were the "greatest team because they never gave up."

"We aren't that big," said Frosty. "But it isn't a game that just goes to the big guys, but to the swift and to those who don't give up."



Safety Don Coltom, who made five tackles, here levels Westminster kick returner Russ Boston

Defensive Coach Paul Hoseth praised the defensive effort. "Today we did some things defensively that we don't even have in the playbooks," he said.

He encouraged the fans to get to the Dome by 6:30 p.m. so they could "see how a team prepares for a game physically that they have already prepared for emotionally and spiritually."

Then he had the cheerleaders stand up to be recognized for their efforts.

Cheerleader Diane Dohner said, that she was glad to be what "every little girl dreams to be someday—a college cheerleader." She said the cheerleaders felt a part of the football

program because Frosty had made an effort to include the ten-girl squad. "We really understand the program because of him," she said.

"He has taught us that there's such a thing as cheerleaders for Christ and that's what we are all about," Dohner said.

Shortly afterward, anyone in the crowd with birthdays that week was invited up front for a rousing round of "Happy Birthday." Frosty was among those celebrating his birthday. He was 56 last week.

Todd Davis, senior center, then led the group in prayer. After he prayed he had everyone join in with the Lord's Prayer. The room was still, the heads were bowed. "Our Father who art in heaven..."

Tomorrow's schedule

Several campus events have been rescheduled due to the NAIA championship football game in the Tacoma Dome at 7:30.

Tomorrow's schedule of events: Winter Commencement, 2:30 p.m. in Eastvold; the men's basketball game, 3 p.m. in Memorial; the final on-campus Christmas concert, 4 p.m. in Olson; and the football game, 7:30 p.m. in the Tacoma Dome.



Jeff Loftus, senior linebacker shows sideline intensity as the Lute offense battles from behind.

Team parents offer support

PLU football is a 'family affair'

By KAREN FASTER

Support for the Lutes goes far beyond the campus, reaching out to include an extended family that circles round and comes together behind the team, giving it an extra push on the field. The special community of the football team includes the players' parents.

Because of this community, it was no surprise when at least \$1,800 was given in response to a request for money to help defray the costs of hosting the NAIA quarterfinal game against Westminster. The plea was first made by Bill McKay, father of assistant coach Scott McKay, at the Pacific post-game Locker Room.

This was followed by a letter sent to the 71 sets of team parents. Several parents signed the letter. The effort was organized by Kaye and Annette Herzer, parents of defensive end Kent Herzer.

In the letter, "we said we felt since it was such a costly venture hosting the quarterfinal game, we (the parents) would like to make up the money," Kaye Herzer said.

He said that so far about one-third of the parents have given money averaging about \$60 for each gift. One thousand, two hundred dollars went to cover the cost of renting the Lincoln Bowl for the Westminster game.

Herzer said the parents were actually saving money because they would have had to pay to travel to the games if they had been played in Kansas and Pennsylvania. He said, knowing what "hard core" fans the parents are, about one-half to one-third of them would have gone to Kansas and perhaps one-third to Pennsylvania to cheer on their sons.

Jack Davis, father of senior center Todd Davis, agreed about saving money. He said it was less expensive to support the team at home than to travel.

His son, Todd, said he would "rather stay and play for the home crowd (which is like an) extra player to us with all its cheering and support."

Todd Davis especially likes the idea of again playing in the Tacoma Dome because its atmosphere helps excite the crowd, and the building "multiplies the noise. That's the greatest thing."

Jack Davis has the distinction of having missed only one or two games since 1976, the years his two sons, Todd and Scott have played. Scott graduated in 1981, Todd will graduate tomorrow afternoon. Jack Davis takes pictures at all the games and passes the negatives on to his sons. He will be on the field tomorrow night, shooting the last game he will see one of his sons play in.

He said that now he will no longer have to watch specific positions, he'll be able to relax and enjoy watching the game, "at least I won't have to get uptight," he said. Even watching professional games, Jack Davis found himself analyzing the center, the position his sons played.

The special community the football team creates includes the parents. Todd Davis said this means a lot to the team, that it is a "great feeling" to know they are there supporting the team.

Jack Davis said there is a "nucleus of parents going to the games." They have followed their sons all over the country during the years. The nucleus "seems now to be growing," he said.

Frosty Westering, the head coach, deserves "a great deal of the credit" for creating this community spirit, Herzer said. If the parents did not feel good about the coaching staff, they would not support the team the way they do.

It is "like a big family," Todd Davis said.

This big family often adopts the players whose parents cannot make the games regularly, Jack Davis said. He has seen this happen again and again over the years.

Daring Lutes 'go fourth' to topple Titans

By BRUCE VOSS

Twice on fourth-down situations deep in Westminster territory, PLU Coach Frosty Westering followed the advice on the cheerleaders' signs: "Go for it."

And both times his Lutes came up with big-play touchdowns that led PLU to a nerve-wracking 16-13 upset victory over Westminster in last Saturday's NAIA Division II national semifinals at Lincoln Bowl.

"Teams get predictable in short-yardage situations," Westering said when asked about his daring play calls. "If you're willing to risk it and can execute well, in these situations you've got a better percentage chance of making the 'Big Play'."

On the first touchdown, PLU faced fourth-and-two at the Titan 24, three plays after defensive end Steve Gibbs' fumble recovery. The Lutes called time out, and then on the ensuing play little running back Robbie Speer took a pitchout right, stopped suddenly and lofted a perfect strike to end Randy Hamlin, who'd beaten three defenders and pranced into the end zone untouched.

Westminster, decked out in Penn. St.-style all-white uniforms, struck back with two long touchdown passes and led 13-7 midway through the third quarter. PLU, which had sputtered offensively since the first quarter, then began a most unusual 64-yard winning touchdown drive that featured one second-and-19 predicament and another third-and-23.

It all came down to fourth-and-two at the Titan 29. Lute quarterback Kevin Skogen faked the dive play and looped a flair pass to running back Jeff Rohr, who caught it over his head and outran everyone to the flag. Walt Miles' 41st extra point of the season gave PLU the lead for good.

Defensively, the Lutes changed "looks" throughout and confused the Titans, whose vaunted balanced attack was held to 13 first downs and zero yards rushing in the second half.

"We controlled things pretty well," said defensive coach Paul Hoseth. "It turned into a game of Big Plays, and with the exception of those (one of which came when PLU tried to single-cover the tight end), I thought we more or less neutralized them."

Westminster had one last chance, taking over on their own 7 with two minutes left. But a clipping penalty stunted their drive, and then on fourth down defensive tackle Tim Shannon busted through the middle and sacked Westminster quarterback Rich Edder for the clinching safety.



"Yes We Can" and yes, they did. The Lutes exult after learning that the NAIA championship game will be played in the Tacoma Dome.

Most of the 1,706 frigid fans went slightly mad.

"I didn't even think," Shannon said of his sack. "I shot the center-guard gap and just ran in and knocked him over. We hit the turf, and I saw the endline and the crowd was going wild...I just thought, 'Wow, what an awesome game.'"

At the post-game festivities, Westering told the crowd Westminster was "one of the classiest teams we've ever played."

"The character of the game was just outstanding," he said later. "It was anybody's game...a national championship type game, give and take all the way."

Offensive player-of-the-game Rohr rushed for 105 yards, and in the process became PLU's all-time rushing leader, breaking Mike Westmiller's old mark of 2,605 yards.

Senior linebacker Jeff Loftus was named defensive player-of-the-game.

PLU 16, West. 13

Westminster 0760-13
PLU 0772-16

PLU — Hamlin 24-pass from Speer (Miles kick)
West. — Gooch 33-pass from Edder (Riley kick)
West. — Gooch 54-pass from Edder (kick failed)
PLU — Rohr 29-pass from Skogen (Miles kick)
PLU — Safety, Edder sacked by Shannon
Attendance — 1,706
Rushing — Rohr 26-105, Speer 8-44, J. Johnson 6-3
Passing — Skogen 16-24-1, 116 yards; Speer 1-1-0, 24 yards
Receiving — Hamlin 7-59, Rohr 4-41, Speer 4-23

The season in review

Frosty Westering's 12th season as PLU football coach has been a strange one; up and then down and then all the way up to the national championship game. The regular season in review:

PLU 13, Puget Sound 10.—Senior Jeff Rohr did it all, rushing for 177 yards, hitting booming punts, and kicking the winning 28-yard field goal with 28 seconds remaining before 14,830 frenzied fans in the Tacoma Dome.

PLU 49, Western Washington 7.—In a night game not even as close as the score, PLU scored on its first four possessions and held the Vikings to minus-10 yards rushing.

Central Washington 15, PLU 14.—The Wildcats used long pass plays to set up two fourth-quarter touchdowns, then twice held PLU on fourth-and-one situations in beating the Lutes for the first time since 1965.

PLU 34, Simon Fraser 12.—Benefiting from SFU fumbles, PLU scored 17 points in a three-minute span early in the third quarter and raced by the big, slow Clansmen.

Linfield 30, PLU 27.—In their

Homecoming Game at Lincoln Bowl, the Lutes sputtered to a 28-7 third quarter deficit, then roared back with three quick touchdowns but fell one two-point conversion pass short of completing the reversal against their Northwest Conference arch-rivals.

PLU 33, Lewis & Clark 15.—PLU made the "Big Plays" defensively, and offensively ran misdirection plays that had the Pioneers chasing air.

PLU 42, Willamette 24.—For the second straight week, the Lutes won a rout despite being outgained in total yardage.

PLU 47, Whitworth 6.—Coach Frosty Westering called it "perhaps the finest effort I've ever seen," as PLU came out in its new gold jerseys and buried the highly-regarded Pirates. The Lutes rolled up 617 yards total offense, 400 in the first half while jumping to a 41-0 lead.

PLU 34, Pacific 3.—In an indescribable mudbath down at Forest Grove, the Lutes sloshed to victory and then went for a delirious post-game mudslide after learning they'd clinched an NAIA playoff spot.

Unsung heroes secure home sweet Dome

"Team effort."

That old football cliché works just as well to describe the way a tireless group has worked their Lute-butts off to enable PLU to host all three rounds of the championship series.

Sports Information Director Jim Kittilsby spends 20-hour "days at the office" and could save time by attaching a phone to his ear. Athletic Director David Olson uses all his New Math skills to compute the budget guarantee to the NAIA. Archivist Milt Nesvig sells 28 ads in a day to fund the game program.

And what's it all worth?

"It's an enormous plus for PLU, something nobody could put a dollar sign on," Olson said. "For example, 64,000 people at the Seahawks game were reminded of PLU's victory in a two-minute announcement and encouraged to give a big round of applause. You can't buy that kind of publicity."

...In the Spotlight

By BRUCE VOSS

PLU also hosted all three games the last time it made it to the NAIA Division II final in 1980. One might wonder why the 1983 Lutes, who qualified eighth in the 8-team tournament, get to stay at home while top-ranked Northwestern goes on the road for the semi-finals and finals?

As is often the case in sports and life, the answers are money and Mother Nature. PLU, with its non-severe climate and loyal fan support, was able to put together the most attractive "bid."

The bid, computed by Olson and

Kittilsby, is a mini-budget detailing expected expenditures (for visiting teams' lodging, ground travel, etc., all paid for by the NAIA) and giving a minimum "guaranteed" payment to the NAIA.

Ticket revenues fell about \$3,000 short of PLU's guarantee for the first-round Baker game, but the Lutes came out \$200 in the black on their \$7,000 Westminster game pledge. Figuring on a crowd of at least 3-5,000 tomorrow night, Olson is guaranteeing the NAIA \$15,000 for the championship game.

Besides the guarantee, the NAIA also looks at weather conditions and facilities. Last week Northwestern played William Jewell in a Missouri icestorm; both teams warmed up indoors, they cancelled the pre-game player introductions and half the paid crowd never showed up.

"Who's going to turn down the Tacoma Dome, a \$30 million facility with all its amenities, in favor of

playing in a snowbank in Orange City, Iowa (Northwestern's hometown)?" asked Kittilsby. "Not that Orange City isn't a nice place..."

In addition to the obvious promotional and time benefits of playing near home, Kittilsby noted that going on the road would cost PLU an additional \$5,000 or so for "support personnel." President Rieke would be sent, along with a cheerleader or two or ten, and various media types like the *Tacoma News Tribune* reporter would have to be lodged and fed.

So it's a good deal for the Lutes to stay put. Kittilsby praised the "unsung heroes" like Director of Planned Giving Edgar Larson, who searched and found someone to foot the \$5,000-plus bill for renting the Dome.

In the midst of the Dome megawatt madness tomorrow night, it might not be a bad idea to give these "unsung heroes" at least a silent cheer.