

The Mooring Mast

VOL. 31, NO. 2

PUBLISHED BY THE STUDENTS OF PACIFIC LUTHERAN COLLEGE

FRIDAY, OCTOBER 2, 1953

Work on New Dorms To Start Immediately

Bids were let Tuesday evening for the construction of two dormitories on the campus at a meeting of the executive committee of the college board of trustees. Construction will start at once on the buildings which will cost over \$900,000.

Three of the four contracts were given to Tacoma firms. All bids are subject to the approval of the Housing and Home Finance Agency of the federal government. This agency is loaning the money for the buildings.

Bennett Campbell, Inc., of Seattle was awarded the contract for general construction. Five alternate deducts were made from the base bid.

The mechanical contract was awarded to Stoker Engineering Co., with two alternate deducts made from their low base bid. Tech-Craft, Inc., was given the fixed furnishings contract; and Connors Electric Co., was awarded the electrical contract. Two alternate deducts decided the low bidding contractor for the electrical work.

Both buildings will be constructed simultaneously, and the contract calls for their completion by September 1, 1954.

The dormitories will be Class A fire-proof structures, with steel frames, concrete floor slabs and masonry walls. The exterior brick will match that of the other new buildings on the campus.

"Our architects have made a study of new dormitories at private and state educational institutions in the Pacific Northwest," President S. C. Eastvold stated Wednesday. "We have had the benefit of experiences in the construction and use of these dormitories by these schools, and have incorporated as many of the fine features of these buildings as we can possibly use," he added.

The buildings will be located west of the chapel-music-speech building in the wooded area of the upper campus. One will house 130 women and the other 120 men.

Features of each building will include lounges, reception rooms,

patios, covered sun decks, serving kitchens, light laundry and ironing rooms, recreation rooms and convactor radiation heating.

The study-bedrooms will furnish complete accommodations for two students, including built-in beds (which become furniture for sitting during the day), built-in desks and bookshelves and located so that every desk has full daylight from the left side, a private wardrobe and adjoining set of drawers for each student. Two desk chairs, two lounge chairs, medicine cabinets, mirrors, tackboards, storage space and scientific desk and bed lighting will be provided.

Debaters Start Busy Schedule

One hundred and seven trophies acquired during the past five years and more to be won this year!

With this theme in mind the debate squad held its first meeting of the year September 23 in the Chapel-Music-Speech Building. Adviser Theodore Karl was in charge of the gathering.

The first major event of the year for the speakers will be the Western Speech Association Tournament at Fresno, California, on November 23, 24 and 25. Here they will compete with debaters from 11 states, using this year's national question: "Resolved, That the United States should adopt a policy of free trade."

The forensic organization will also undertake the annual Student Congress, held on campus, October 31. This affair yearly draws a large number of high school students from the western states.

The debate squad meets every Monday and Wednesday in CMS-122 at 4 p.m. All students are urged to come and participate.

PICNIC SATURDAY

The annual frosh-soph picnic will be held Saturday afternoon at Pt. Defiance Park, Tacoma, 1 to 4:30.

Library Introduces Self-help Plan, Other Improvements

"Once we brought the book to them, now they must help themselves."

This new plan will be inaugurated for the first time this year in our rapidly expanding library.

From now on the entire library will be the students' workshop. A room for bound periodicals has been created complete with chairs and tables for the use of those students wishing to do research work.

Also a change in the magazine room has come about. Instructions have been posted indicating the correct procedure to be used in this room. The stacks are to be open to everyone and with the cooperation of all concerned this will work without confusion.

Another important addition are two typewriters which have been set up in a room apart from the rest for the convenience of those who do not have access to a typewriter in the dorms or other living quarters.

These are just a few of the improvements which have come about for the betterment of our library and students are encouraged to come and see these changes for themselves.

The library hours for the fall and spring semesters are as follows:

Monday-Thursday—7:50 a.m. to 6:00 p.m.; 6:30 p.m. to 9:30 p.m.

Friday—7:50 a.m. to 4:30 p.m.

Saturday—9:00 a.m. to 12 noon; 100 p.m. to 4:00 p.m.

Students Choose Wiggins and Morgan

Janet Wiggins, freshman, and Sharon Morgan, sophomore, were elected 1953-54 cheer leaders in Wednesday's election.

This is the second year for Sharon, as she held the same position last year.

The girls will join Spencer Aust and Stu Morton, sophomores, the boys of the yell squad who had been previously chosen.

P.L.C. Welcomes Hawaiian Students

Taking on a continental air, PLC has welcomed many foreign students. Today's column concerns three new students from Hawaii.

Nathalie Ho, freshman, comes from Roosevelt high school, Honolulu. A library science major, Nat likes PLC and the students here. After almost three weeks, she is still amazed at the friendliness of the students. Living in Hawaii for such a long time, she finds the mainland quite different from her home town.

Roderick Baseshore, also from Honolulu, and a radio technology major, finds PLC just to his liking. When asked how he likes the mainland, Rod replied, "will do."

A transfer from the University of Hawaii, Helen Yoshimura thinks the students are just swell and the campus the most beautiful she has ever seen. She is a sophomore and the only thing that is not quite up to par here is the weather. Helen finds it too cold.

L. S. A. Presents "King of Kings"

"King of Kings," a 105-minute technicolor film, will be presented by L.S.A. at 7 p.m. Sunday in the SUB.

According to President Bud Lester, the movie is the story of the Life of Christ, from the conversion of Mary Magdalene to the Resurrection.

A brief singspiration will be led by Stu Gilbreath and Glenn Johnson will lead in devotions.

Stuhlmiller Elected Senior Class Prexy

Richard Stuhlmiller was elected senior class president in yesterday's balloting. Other officers chosen were Donald Hefty, vice-president; Gloria Evanson, secretary; and Phyllis Bergren, inter-club council representative. Janet Carson and Charlotte Brandt tied for treasurer. A revote will be taken Monday.

Junior class officers chosen this week include: Richard Brandt, president; Robert Keller, vice-president; Jeanne Frieske, secretary; Gordon Christenson, treasurer; and Mina Raaen, inter-club council representative.

Luella Vig Elected Homecoming Queen

Hundreds of PLC alumni and friends are expected to flock to Luteville next weekend, Oct. 9-11, to join in the 1953 Homecoming celebration. Throughout the three gala days, the theme, "PLC Grows with Washington," will be observed.

Reigning over the festivities will be Queen Luella I and Princesses Alta and Gloria. The royal trio was selected by student ballot Wednesday.

Homecoming will officially get under way with the Coronation program at 8 p.m. Friday night in the C-M-S. Washington State Governor Arthur B. Langlie will crown Her Highness Luella.

Coronation at 8 P.M.

An elaborate program has been planned for coronation night by co-chairmen Jean Christiansen and Jim Jaeger. Each Homecoming Queen from 1941, when the first queen was elected, to the present will be present or represented at the program. Feature of the evening's entertainment will be talent from each queen's era, which will represent some of the best entertainers Luteville has produced in the last decade.

A colorful assortment of sky-rockets and aerial bombs will lend noise and excitement to the Pep Rally to be held immediately after the coronation. Chairman Bob Ross says that the trail to the gym will be lit with 60 bright flares. At the end of the trail, next to the gym, will be a huge bonfire constructed by the Frosh. The band will play and Coach Marv Harshman and team members will be introduced.

Following the rally, an informal coffee hour will be held for all alumni in the Student Union.

Saturday will be football day. In the morning the upperclass "Gallop-ing Girdles" and the frosh "Bruising Bustles" will square off on the lower campus for the feminine gridiron title. This will be the fifth renewal of the "Powderpuff Bowl" classic.

Tug o' War

Halftime ceremonies promise to be entertaining. First on the agenda will be the traditional tug o' war between the frosh and soph men.

(Continued on Page Two)

Alpha Phi Omega Welcomes 28 Pledges

Alpha Phi Omega welcomed 28 pledges in their annual ceremony September 28th in the Chapel-Music-Speech building.

They were presented booklets explaining the fraternity and must get the signatures of all Alpha Phi Omega members. They receive the signatures by answering questions about the organization. After a pledging period, they will become official Alpha Phi Omega members at a party for all members and their guests.

This year's pledges are: Paul Jorden, Paul Bongfelt, Maurice Hillis, James Voss, Rodney Christiansen, James Larson, Don Nelson, Carl Meyers, Dick Erdman, Robert Monson and Paul Lucky.

From a field of ten candidates, Luella Vig has been chosen by the PLC electorate to reign over the 1953 Homecoming festivities, Oct. 9-11. She will receive her crown and scepter and officially become Queen Luella I next Friday night at the coronation program scheduled for 8 p.m. in the Chapel-Music-Speech building. Governor Arthur B. Langlie will perform the coronation rites.

Princesses in the royal court will be Gloria Kvinge and Alta Prestbye.

Queen Luella I

Ketchikan, Alaska, claims the 1953 Homecoming Queen. The 5'8" beauty with brown hair and hazel eyes was born there 22 years ago. Luella attended high school in the northern city and graduated there except for her sophomore year when she attended Queen Anne high school in Seattle.

Her college career has been spent, for the most part, at Emanuel Hospital in Portland, working towards the degree of Bachelor of Science in Nursing. She will receive her sheekskin in June with the Class of '54.

In her first and last years at PLC, Lu has been active in L.S.A. and L.D.R., served as Frosh representative for DPK and sang in the Chorus. She is also one of the charter members of the newly-organized Nurses Club.

As for future plans, the Queen plans to marry Marine Lieutenant Milton Hefty, a PLC grad of '52, next fall. Her fiancé is presently serving with the Marines in Japan. "I also plan to further my education in nursing," the brownette added.

Princess Gloria Kvinge

Helping assist Queen Luella in her regal duties will be Princess Gloria Kvinge. The 5'4" blue-eyed strawberry blonde hails from Seattle, where she attended Ballard high school.

Gloria is majoring in education and wants to teach on the primary level. She is a member of the '55 class.

While at PLC, the 19-year-old lass has worked on the ad staffs of both the Mooring Mast and the Saga. She has also devoted her time to L.S.A., Mission Crusaders, F.T.A., Viking Club and Ski Club.

Princess Alta Prestbye

Completing the royal court is blonde and green-eyed Alta Prestbye. Princess Alta is also a junior.

This 19 year old, 5'9" beauty comes to Luteville from Kalispell, Mont. Like Gloria, Alta is majoring in Education on the primary level.

Her extra-curricular time has been spent in L.S.A., W.A.A., F.T.A., Chorus, and as vice-president of Spurs.

IVY HALL

Doris Pine was elected president of the Ivy Hall girls at the elections on Sept. 22. Winnie Mitton is vice-president and social chairman. Salome Kaskenen is secretary-treasurer, and Paula Baker, devotional leader.

The Mooring Mast

Published every Friday during the school year by students of Pacific Lutheran College.
Entered as second class matter, October 2, 1952, at the Post Office at Parkland, Washington.
Office: Student Union Telephone GRanite 8611
Subscription price—\$1.50 per year.

EDITOR-IN-CHIEF.....JO HANSEN
NEWS EDITOR.....ANNABELLE CHRISTENSEN
BUSINESS MANAGER.....WALTER SCHWINDT
AD MANAGER.....DONNA MILLER
MAKE-UP EDITOR.....JOAN KITTELSON
FEATURE EDITOR.....BARBARA LEAF
CIRCULATION AND EXCHANGE STAFF.....JEAN COGBURN, LORIS ZELMER, PHYLLISS CASPERSON, MAUDIE STRAUB, CAROL EDLUND, JANET GELDABER.
SPORTS STAFF.....RON JOHNSON, CATHERINE SANNERUD
ASSOCIATE STAFF.....DELORIS BECK, HELEN JASKIMURA, JOYCE PEFFERT, DAVE NESVIG, NATHALIE HO, LOIS SAND, ERNIE PIHL, MARY DREXEL, MARILYN OLSON, DONNA SWANSON, CAROL WELTON, ED KENNEDY, PHYLLIS BRANDT, ANITA SCHNELL.

Neurotic or Jelly-Fish?

"A few words of welcome" are probably what the class of '57 least wishes to hear now. No matter how well meant, even a good thing can be overworked. Therefore, let's take a different tack.

One of the words you will probably hear just as much of as you did of welcome, will be "spirit." This word will be thrown at you from every direction and for every reason. Everyone always talks about spirit, the lack of it and the need for it on campus, but few people do anything about it. You will be told that it is second only to educational facilities; that it can make the difference between success and failure in a school year. The things to remember about spirit, however, is that talk alone does no good. Action, and only action, helps.

The answer to what you can do about spirit lies principally in the literally dozens of activities in a wide field that are open to interested students at the college.

Another thing to remember is that it really isn't necessary for you to shoulder all the problems of the world right away. Try solving some with your room-mate and leave one or two for the rest of us. Few of the problems that hit us at college are big enough to worry much about anyway. Many of them you're able to laugh off the next day, and even the troubles with your room-mate can be worked out. In other words, try to find the medium between being a jelly-fish and a neurotic.

Try adjusting to "college life" quickly. And, if possible do so as painlessly as can be—for the sake of the upperclassmen as well as for your own comfort.

CRUISE FRIDAY

Under the auspices of Pi Kappa Delta, a cruise on Puget Sound will be held Friday evening from 7 to 11 o'clock on "Gallant Lady." The cost is \$2.00 per couple. Make reservations today.

ART'S SHOE SHOP

Garfield Street

QUALITY
REPAIRING - DYEING

Late Model UNDERWOOD Typewriters FOR RENT

SPECIAL STUDENT RATES

Underwood Corp.

1610 Center St. MA 4801

Chapel Quotes . . .

"We teachers are not interested in what you are now, but only in what you are going to be."
—Dean Hauge

"Sin is like an octopus; every time you say yes to it another of its tentacles reaches out to enfold you."
—Pastor Steen.

"When God is working in our hearts we are working for our brothers."
—Dean Hauge.

"The only way your generation can repay its debt to past generations is to produce good generations in the future."
—Mr. Norman Nelson

PATRONIZE OUR ADVERTISERS

NEAL E. THORSEN

TRICKS - JOKES - MAGIC
Costumes, Tuxedos, Serpentine
926½ Broadway MA 4861

Homecoming

(Continued from Page 1)

If the frosh win, they can doff their beanies, but if the sophs are victorious, the beanies stay on for another week. Following this, Handsome Harry will be crowned. He will be presented with a Handsome Harry Mug and medal.

More than two dozen floats will make up the annual Homecoming parade which is slated to leave the campus at 10:30 a.m. It will proceed down Garfield street and past the judges' stand, which will be located at the post office. The floats will then be taken by police escort downtown where they will be viewed on Broadway and Pacific Avenue. Leading the line will be the band and royal court. Three prominent PLC alumni will be judges.

Lutes vs. Wildcats, 2 P.M.

The parade will end at Lincoln Bowl where the Gladiators will meet the highly-touted Central Washington Wildcats at 2 p.m.

Spectators will be entertained between halves with special stunts by the music department. A group composed of the Choir and Chorus will march on the field and spell out PLC. Then they will shift into a cross formation and sing, accompanied by the band, "A Mighty Fortress Is Our God." A.S.B. President John Rydgren will introduce the queen and her court to the crowd.

At 5:30 p.m. in the SUB, grads will gather for the annual alumni banquet.

Quick Change Artist

Feature of Theatre Night, which commences at 8:30 in the C-M-S, will be Jack Rank, nationally-known Shakespearean actor. He will present "Taming of the Shrew." Being a quick change artist, Rank will portray all of the characters, with no change of costume taking him more than 20 seconds. He is presently in his 21st nation-wide tour.

The celebration will end on a spiritual note Sunday morning when Dr. J. P. Pflueger delivers the sermon at the 11 a.m. worship service. At this service, the Choir of the West will provide special music.

Special decorations will enliven the campus, in keeping with the Homecoming theme. Kathy Hinrichs and Dick Nodtvedt, decorations chairmen, have divulged some of their plans. In front of Old Main will be a gigantic goal post with a welcome for alums. All the buildings on campus will be decorated with signs and pennants to add atmosphere.

Two hundred and twenty gold and black bumper strips have been distributed and posters have been placed on the sides of Tacoma buses. The Tacoma News Tribune will run a special two-page spread next Thursday or Friday. Two downtown stores, Washington Hardware and Rhodes, are running special window displays in keeping with the Homecoming theme.

In Parkland, store windows have all been transformed to represent PLC's progress.

Committees Listed

Committees and their chairmen deserve a big thank you for their part in planning the 1953 Homecoming. Following are the committees: alumni banquet, Peggy Holbrook and Marlys Salterbeck; registration, Iris Nordman; girls football, Loris Zellmer and Mary Olson; publicity, Jean Hansen and Dave Nesvig; coffee hours, Janet Carson and Kathy Biery; public address system, Judd Doughty, and window displays, Erv Severtson.

Lute Students Spend Summer In Wheat Trucks, Some Marry

Everything from wheat trucks to marriage attracted PLC students during the summer months.

Among the students who made the traditional trip down the aisle, were Romona Watkin and Jim Ball, and Anita Olson and John Osburn. Both couples are living near the campus, while the men continue school.

Jo Bon Durant became engaged to "the boy back home," surprising everyone, including herself; and Jewel Herreid, now a student nurse at Emmanuel Hospital in Portland, became engaged to Dave Eusberg, a sophomore here.

It seems that the students of PLC are not only brilliant, but also versatile. Glen Johnson produced, directed and starred in the play, "Good Housekeeping," at the St. Paul's Lutheran Church in Oakland, California.

Marciel Fink drove a wheat truck and was fired, maybe because "I drove for two hours on a flat tire."

John (Prexy) Rydgren helped build a house in Parkland, while Carol Bottemiller climbed to the top of Mt. Hood, Oregon, with a horizon club.

Jack Hower got a third degree sunburn while at a Luther League

Convention at Huntington Beach, and Ed Kennedy worked in a department store selling shoes adjacent to a lingerie department.

Janet Moe made banana splits at Moses Lake, "but I forgot to put in the bananas," she said.

Iris Nordham went on a student tour to Europe, while Mary Olson and Connie Hanson studied in Norway.

The College Quartet, Jim Jaeger, Bob Beatly, Ernie Johnson and Reid French, went on an 1,100 mile trip through California, Oregon, Washington, Montana, and Idaho, making approximately one hundred and five personal appearances.

The faculty didn't exactly sit home before the fires either. Dr. S. C. Eastvold and family traveled by boat to Alaska, while Miss Viola Olson went to Moorehead, Minn. Professor and Mrs. F. C. Newnham went to his home in "bonnie" Scotland.

Mr. Theodore Karl went to Minneapolis, Minn., in June, and came back in July with a charming wife, and Mrs. Volberg Holmstead spent the summer at her home in Minneapolis, Minn., where she attended several conventions and the Minnesota State Fair.

Testing And Parties For Frosh During Orientation Week

Freshman Orientation Week was begun for some 320 students on September 13 with a convocation by Margaret Wickstrom, dean of women, and L. O. Eklund, dean of men. At two the freshmen began the testing part of their program which was followed by a meeting of the new dormitory girls. A freshman dinner was held at six o'clock and a party for new women students began at eight o'clock in Old Main. There was also a party for the new men students in the SUB.

Tuesday there was more testing and that evening the Lutheran Student Association Welcome was held.

On Wednesday more tests were given and an orientation lecture was presented by Dean Eklund at 10:45. At 2:30 the men and women met in separate groups for meetings with their respective deans and later in the afternoon the freshmen were given a chance to attend lectures on the college drama, radio and forensics programs. The faculty-home reception was held at 7:30 with groups of freshmen going to various homes.

Thursday morning was devoted to taking health examinations. All freshmen were assigned advisers at 1:00, after which Miss Wickstrom presented an orientation lecture. Later meetings were held with students and advisers to the possible subjects to take. In the evening a motion picture, "The Difference," was shown to all students with Dr. S. C. Eastvold, president, presiding. Frosh registration for classes began Friday morning in the library and continued throughout the day. That evening a formal faculty re-

ception was held at eight o'clock. This gave all new students a chance to meet their teachers before classes began.

Registration continued on Saturday and an All-College picnic was held on the college campus Saturday evening before the first football game. At the game all freshmen appeared with beanies and sat in reserved Frosh seats.

College Band to Play At Reformation Rally

"Prospects are very good and we especially have a good brass section this year," said Dr. Larson, band director, in a recent interview.

He has plans to concentrate on concert music this year and has hopes for some extra special performances. In the near future we will hear the band at the Homecoming parade and game.

On October 25 the band will play for the All Lutheran Reformation Festival held in Tacoma. They have hopes of presenting a concert in the chapel some Sunday in November and they will also play for the Christmas concert.

WANTED

One ride for three girls to Bellingham Saturday morning for the game

Contact Room 313 Old Main

DILL HOWELL Sporting Goods

929 Commerce St. Tacoma
MA 5665

PRINTING? - - - THAT'S OUR BUSINESS!

LaCrosse Printers

PARKLAND, WASHINGTON

GRanite 7100

Lutes Open Title Defense Saturday; Lacked Scoring Punch in 20-0 CPS Loss

Opening Evergreen Conference play tomorrow, the Lutes are still looking for their first win.

Downed by the CPS Loggers last Saturday, Marv Harshman's boys travel to Bellingham tomorrow to tangle with the Western Washington Vikings.

Close for the first half, the game was decided in the third quarter when Logger end Lou (Alphabet) Grzadzielewski stormed in and blocked Frank Karwoski's fourth down punt. Two minutes later, Dale Meshke crashed over from the one.

Capitalizing on another poor punt, the Loggers scored early in the fourth canto, on a beautiful twenty yard pass play.

Traveling 70 yards in nine plays, the Loggers scored again, with one minute left in the game.

The Lutes never penetrated beyond the CPS 32-yard line, and fumbled six times, losing the ball on three of these. The Loggers also

intercepted two of quarterback Dick Larson's tosses.

The two teams were more evenly matched than the score indicated.

The Gladiator line was at its strongest, and the backfield was running hard. The Parkland boys edged the Loggers, 10-9, in first downs, but first down's don't win games.

Lancaster, Karwoski, Price and Borden played an outstanding game for the Lutes.

The Vikings from Western have a terrific passing offense, and the Lutes have been working on pass defense all week. No injuries hamper the Lutes, and Coach Harshman will stick with his starting eleven.

Player of the Week

Big man on the Gladiator line, Bill Borden, towers 6'3" and weighs 240 pounds. Borden proved to be a major factor in holding the Lute positions together against the onslaught of the rampaging Loggers in last Saturday's game at CPS.

One of the strongest links in the Gladiator chain, Bill played a smashing right tackle during the first half, keeping the score at 0-0 for the opposing Loggers and succeeded in adding much to the discomfort of the offense. A knee injury obtained in last week's tangle with Humboldt State hindered Borden during the second half of the game.

Coach Marv Harshman commented that Bill's leg should be better by Saturday.

W.A.A. Elects Biery As 1953-54 President

Kathy Biery, newly-elected president of the Women's Athletic Association, formally opened the first meeting with a greeting to all old and new members.

For the benefit of the new girls present, Mrs. Rhoda Young, girls gym teacher, informed them of the purpose of the association. She also told them of the sports that the athletic women of the campus will participate in during the coming year.

New business was begun when a committee was appointed to begin work on the W.A.A. float for Homecoming, and President Biery closed the meeting with the urge that all women interested in sports should come to the coming W.A.A. meetings.

The new officers are as follows: vice-president, Anita Anderson; secretary, Donna Swanson; treasurer, Alvild Romtvedt; I. C. C. representative, Marlene Hovland, and adviser, Mrs. Young.

Girl Gridders Out to Win

With the Powder Puff game just one week away, both teams, freshman and upperclassmen, are industriously practicing in hopes of the crown.

According to Jo Schwarzwalter, captain of the upperclassmen team, her group is a cinch to win.

"Our line averages 150 pounds," she stated, "and we're going to dazzle them to death." Coaching these girls are Dick Larson and Ole Magnuson.

However, Art Swanson, who is coaching the freshman team, is very confident that his team cannot lose.

The freshman players include, on defense: Carolyn Weinz, Carolyn Hoogner, Helen Jordanger, Lorraine Langeland, Marilyn Hefty, Anita Schnell, Delphine Danielson, Gerda Nergaard, Joyce Bebee, Mary Ann Richardson and Captain Nathalie Ho.

The girls on offense include Winnie Mitton, Shirley Savage, Beverly Sveningsen, Lorraine Schimick, Sylvia Harrian, Lavonne Stenhjen, Judy Berreker, Monique Wetten, Donna Miller, Arlene Dow and captain June Sather.

The list of sophomore girls will be published next week.

Harshman Appears On Television Program

Wednesday, Sept. 16, there appeared on "Lucky" channel 13 the best program ever witnessed on TV. Coach Marv Harshman and his Lutes appeared on the KMO Sports Shorts.

Mentor Harshman gave a brief talk on his key ballplayers and then the camera switched to the Gladiator practice field where it witnessed PLC's All-American Ron Billings snagging a touchdown pass. Frank Lancaster also "rambled" for six in the next series.

The program was closed with a brief discussion of Humboldt State and the prospects for the coming game.

MOVIE TONIGHT

"Cheaper by the Dozen," starring Clifton Webb, will be shown Friday night at 7:30 o'clock in the SUB, under the sponsorship of the PLC chapter of Fututre Teachers of America. Admission will be 25c.

For the Smartest in COLLEGE CLOTHES

For Men

see

Norman R. Smith
928 Pacific Ave.



LUTE CO-CAPTAINS—Jim Ball (left) and Doug McGrath will lead the Gladiators Saturday night in Bellingham as they open their title defense against Western Washington College. Both men are seniors, and both played high school ball together at Puyallup. Ball was an All-Conference end last season. McGrath plays guard.

News from the Bench

By Ron Johnson

by Ron Johnson

Harshman versus Heinrick — always a battle of the minds. These two coaches have hooked up in some extremely close ball games, and neither one is ahead in the won-lost column.

John Heinrick, the veteran CPS mentor, has had many good teams and a few bad ones. His teams, no matter how good or bad, will always be out to beat the Lutes.

"Harsh" always emphasizes any contest with CPS and many upsets have occurred in this bitter rivalry. The most famous of all upsets was PLC's victory over the Loggers' maple men last winter. The Loggers, led by Jake Mayberry, had won twelve straight, and were ranked in the top fifty in the nation. Playing an inspired game, the Gladiators dumped CPS out of the AP ratings, 52-50.

Heinrick opened this year with a victory, but you can be sure that the Lutes, under Harshman, will come roaring back to fight out a win. In the weeks to come, the varsity will gain experience and ability, and an exciting game will take place when the Lutes and the Loggers meet for the totem pole.

Attention, frosh! Keep up the good work. By this I mean your fine display of school spirit at the first two football games. Upperclassmen should take heed and use their lungs to spur those athletes on to their best. Last Tuesday in chapel, you saw the kids who will lead you in cheering for the remainder of the year. Let's have a little cooperation and show the team we are behind them one hun-

dred per cent. Let's make a little more noise; I am little ashamed of the lack of enthusiasm shown lately.

Up in the "big show," the Huskies fared worse than we did, being literally mobbed by Michigan, 50-0.

The Cougars from WSC had it better, defeating giant-killer COP, 26-20. The Huskies take on OSC tomorrow and should win. WSC plays Iowa and will also win.

The sign has been returned again; let's hang onto it!

Egad! These ears have heard of a fan club on campus; but a nicer guy it couldn't happen to. More students are joining every day. Their slogan: "Price is a Prize."

This week in Evergreen Conference play, UBC takes on CWCE and should win. Eastern tangles with Whitworth, and will eke out a victory. CPS drew a bye, while PLC travels to Western. This game is a tossup. My prediction: PLC-14, WWCE-13.

Hobart dumped Brooklyn College, 20-0, and the Hobart Statesmen fight it-out with Trinity College tomorrow.

HOBART WILL WIN!

New Grid Rules Help Gladiators

Last winter marked the death of two-platoon system football, at least for the year 1953. The free substitution rule had been in effect since 1941.

Here is the new substitution rule as adopted by the National Collegiate Athletic Association:

"Any player withdrawn from the game may not go back in the same quarter, except during the final four minutes of the second and fourth quarters. Coaches will be held responsible for the legality of these substitutions."

The old feud as to which is the better will be resumed again, but no one can be sure if the elimination of the free substitution rule will help or hamper collegiate football.

Here at PLC the new rule will, in general, be welcomed, as Coach Harshman has never had the personnel for a full-scale substitution program.

As to what effect the substitution rule will have on the other Evergreen Conference teams remains to be seen.

Intramural Grid Slated

Intramural season is here. First on the calendar is touch football, which will begin as soon as the teams are ready.

The districts are:

1—Central Parkland; 2—Eastern Parkland; 3—Western Parkland, including the Lakes area; 4—Tacoma, including Tacoma, Puyallup, Eatonville; 5—South Clover Creek, two south dorms; 6—North Clover Creek, two north dorms; 7—Holly Hall; 8—Faculty.

The rules and regulations for touch football are:

1—Time: 4:00 p.m.

2—Place: PLC baseball field.

3—Rules:

(a) Two-round tournament.
(b) Two-handed simultaneous touch any place on the body.
(c) Two twenty-minute halves, with five-minute half time. Limit of two time-outs per game. Clocks will be stopped only at half time. Time outs, whenever ball goes out of bounds.

(d) Team must cross a 15-yard marker in four downs in order to remain in possession of the ball.

(e) Each district must have two men available as timer and assistant referee.

(f) Blocking must be done while in standing or running position. Penalty of ten yards for blocking in any other manner.

(g) Any player eligible to receive a pass.

(h) Eight man team with a minimum of four players.

(i) Only ten yards on maximum penalties.

(j) Free substitution.

(k) All participants must sign a roster book before playing.

(l) There will be no try-for-point after touchdown.

(m) There will be no football shoes.

(n) Other rules and regulations same as in eleven-man football.

4—Eligibility: Players must meet qualifications set down in the Intramural Rules and Regulations of PLC.

Over half the boys participated last year. Let's make this one bigger yet.

JOHNSON DRUG



Stop In and See Us for Your SCHOOL SUPPLIES

We're open until 10 week nights and 8 on Sunday

If We Don't Have It, We'll Get It for You

Our Fountain Serves THE BEST!

Madden's Men's & Little Men's Shop

Parkland Center Bldg.

GRanite 4242

SWEATER CENTER for Guys and Gals!



Candidates WANTED
for

HANDSOME HARRY

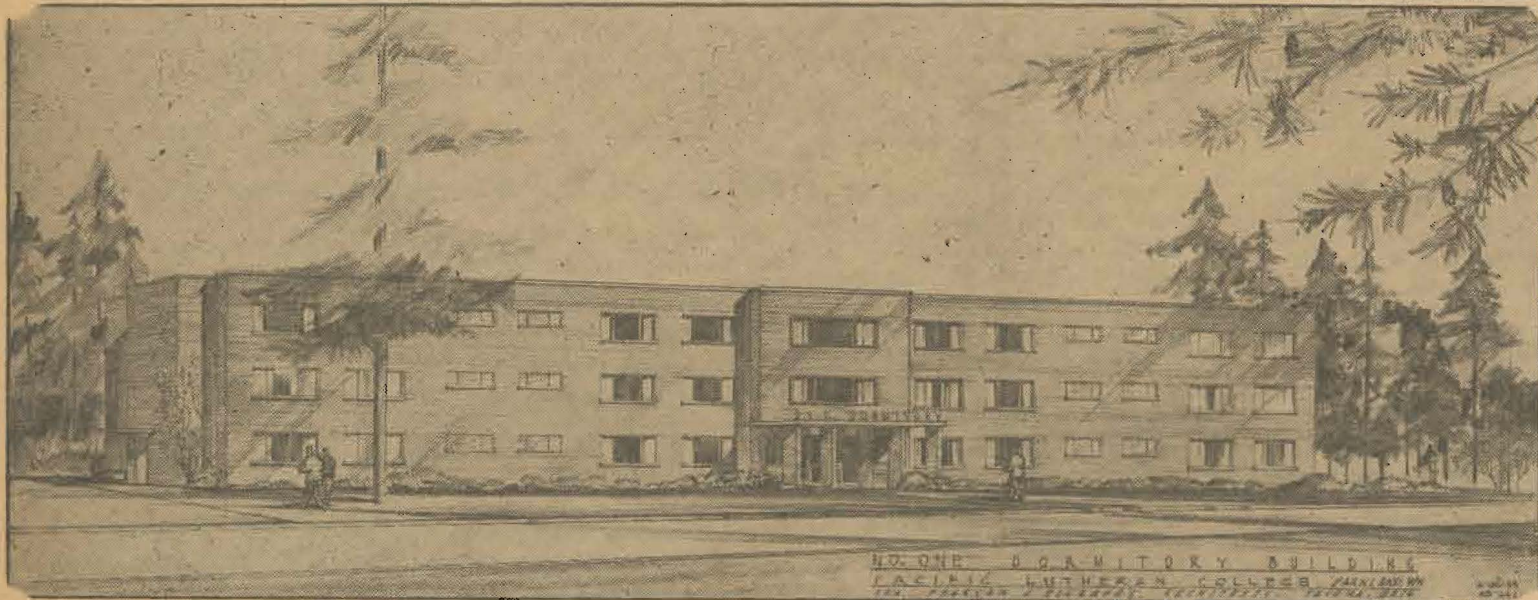
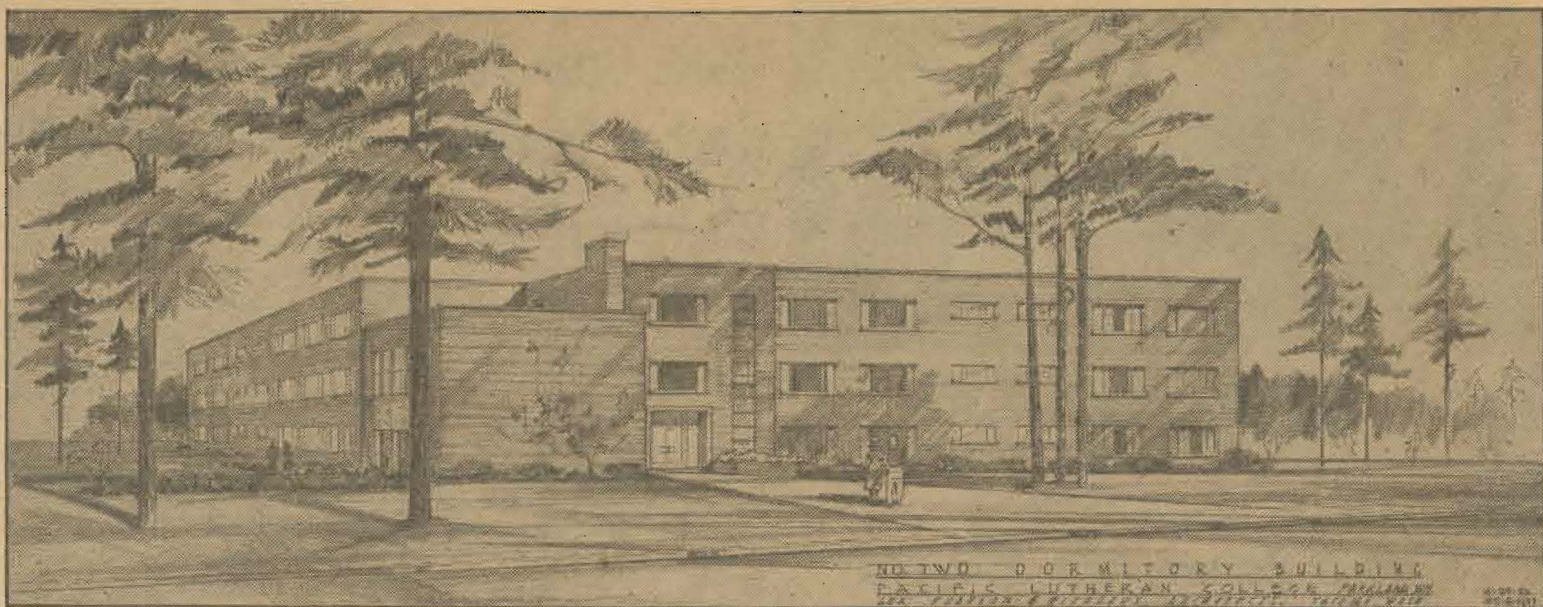
HEIGHT: anything under SEVEN FEET.

WEIGHT: anything over NINETY-EIGHT POUNDS.

DESCRIPTION: must be HANDSOME and HAIRY.

NOTICE: Any suspicious male character found on campus will be subjected to the evil forces of the "DRAGNET." Remember, we just want the facts, that's all, just the facts. Deadline for entries is 5:00 p.m., October 5th. Must also have club, sponsoring candidate, candidate's name and picture. Just the facts, please, just the facts.

Signed, SMITH and FRIDAY
(Missing Persons Bureau)



NEW DORMITORIES — Construction on these two dormitories on the campus is scheduled to begin shortly. The ground breaking ceremony has been tentatively set for Homecoming week end. The architect's sketch above is that of the men's dormitory which will house 120 students. The building on the right will be the women's dormitory and it will house 130 students. Total cost of the two buildings will be over \$900,000, and they are to be ready for use by next September.

McCAY'S ICE CREAMERY
SHAKES - SUNDAES

PATRONIZE OUR ADVERTISERS

DANIELS HARDWARE

★ ★

On the Highway Corner
PACIFIC AVE. & GARFIELD

Stop In at **VERN'S**

for a

DELUXE HAMBURGER

Old Fashioned Fish and Chips
Home-baked Pies and Cakes

FULL FOUNTAIN SERVICE

Ninth and Pacific

Iris Nordman Tours Ten Countries With Student Travel Service Group

Touring ten European countries under the auspices of the Midwest Student Travel Service, was Iris Nordman, junior, during the summer months.

Sailing from Quebec City, Canada, on June 15, Iris and 51 other young women first visited England. They arrived in London shortly after the coronation and were privileged to see the elaborate decorations still in place. Especially impressive, according to Iris, were the coronation setting in Westminster Abbey and the flood-lighted display on the Pall Mall at night. She was fascinated by the quaint charm of Stratford-on-Avon, the home of Shakespeare, near which she saw an excellent Shakespearean play. Before leaving England, she also enjoyed a visit to Oxford University.

In addition to the group's American guide, a native guide conducted the travelers through each coun-

try as they visited France, Germany, Austria, Italy, Switzerland, Denmark, Sweden, and Norway, and traveled by bus, boat, airplane and train. A highlight of Iris' entire tour was a side-trip to her family home in Finland which she left at the age of three years.

Reminiscing on the various cities she visited, Iris says with enthusiasm, "I loved Rome, and was very impressed by its modern architecture, especially its modern-style apartment buildings."

Tacoma Concert Series Will Again Entertain Community

Again this year as in years past four outstanding musical events will be brought to Tacoma's Temple Theatre through the Tacoma Community Concert Series. The first concert will be on October 27 by the world-famed Guard Republican Band of Paris. This 74-piece band is making its first American tour in nearly half a century.

The great American baritone, Todd Duncan, will be heard in re-

Blue Keys Discuss Homecoming Float

Plans for a float in the Homecoming parade and a candidate for the "Handsome Harry" contest are the current activities of Blue Key club, President Donald Kieth has announced.

Projects for the school year include ushering at main school events, sponsoring campus chess, helping to collect food for a needy family at Christmas time, decorating the campus during the Yule season, a spring banquet, and cleaning the grounds on Campus day.

Music Library Has Record Collection

"... For the Use and Profit of the Musical Youth Desirous of Learning as well as for the Pastime of those Already Skilled in this Study."

These are the words of the famous Lutheran composer, Johann Sebastian Bach, and can be applied as the purpose of the Erickson Music Library, located on the second floor of the Chapel-Music-Speech Building.

The library has an extensive collection of phonograph records which is available for student use every afternoon from 2 until 5, except Friday, when the room closes at 4. The music library also contains a rapidly-growing collection of books on musical subjects, including biographies and musical scores.

The library is operated by trained student librarians, under the direction of Professor Karl E. Weiss, head of the Music Department.

It is expected that the library will maintain a separate collection of foreign language records, under the sponsorship of Mrs. Little, for the use of foreign language students.

Student librarians in service to date include Jeanne Frieske, Mary Ensberg, Bev Tranum, Al Freed, and Reld French.

Centre Cleaners

Parkland Centre

Selective Service Exams Dates Listed

Applications for the November 19, 1953 and the April 22, 1954 administrations of the College Qualification Test are now available at Selective Service System local boards throughout the country.

Eligible students who intend to take this test on either date should apply at once to the nearest Selective Service local board for an application and a bulletin of information.

ital on January 26. Leonard Pennario, pianist, will appear on February 16 as the third event in the series, followed on March 2 by The Carolers, a group of five singers in a unique recital program including quintets, trios, duets, male quartets, and solo numbers.

Although the actual membership drive of the Tacoma Community Concert Association is drawing to a close, a number of memberships have been held for PLC students and faculty members. Student memberships are \$3.75, and adult memberships are \$6.75 for the series of four events. New or renewal memberships may be obtained from Ed Kennedy any time before October 24th.

JOHN

the

Watchmaker & Jeweler

508 Garfield St.

Parkland

Since 1887

JOHNSONS

1141 BROADWAY

Quality PAINTS

For Distinctive Sportswear
Come to

"THE SUZY SHOP"

at

HELEN DAVIS

917 Broadway

PARKLAND GRILL

WELCOMES NEW STUDENTS

★ ★

Good Luck to the Gladiators