



TWO SETS OF TWINS in the freshman class are still giving classmates and teachers headaches trying to keep them apart. Richard Johnson scratches his head in bewilderment as he is confronted with the twins coming out of Old Main. From left to right are Nelda and Melba Erickson of Plentywood, Montana, and Elaine and Ellen Harms of Davenport, Washington.

Choir of the West Begins '51 Concert Season Sunday

The Choir of the West will present two concerts Sunday, one in Seattle and one in Tacoma. The group will sing at Ballard First Lutheran Church in Seattle at 4 p.m., and give its annual concert at Bethlehem Lutheran Church in Tacoma at 8 p.m. Shirley Anne Sandin and Richard Svare will have solo roles.

This is the 24th concert season for the pioneer a capella choir which each season appears in Tacoma. For the 14th straight year Professor Gunnar J. Maluin is directing the college singers. Prior to 1937, the group was directed by Joseph O. Edward, who organized the choir in 1927.

The concert program this season includes compositions by Russian, English, German and contemporary American composers. Also included are familiar hymns and choral arrangements.

The Tacoma concert is being sponsored by the Ladies' Guild of Bethlehem Lutheran Church.

Saga in Need of Pics For Student Life

All camera bugs are requested to start taking pictures of campus life for the Student Life section of the Saga, which will include nine pages of the annual. Only photographs taken after September 10 will be accepted with the exception of baby pictures. Any type of picture concerning students and the campus will be accepted, according to Ann Knorr, who is in charge of the section.

Shortly after the beginning of the second semester, the Saga will sponsor a photography contest and three prizes will be awarded for the three best photos. The exact date of the contest will be announced later, but students are urged to start taking pictures now so they will be ready for the contest.

All pictures may be turned into the Campus Photo Studio or to Ann Knorr before the contest.

Patrick Takes Spill; Result: Broken Ankle

Dr. James G. Patrick, associate professor of economics and business administration, is recuperating from a broken ankle. Dr. Patrick fell last week on his way to get his car to drive to chapel.

Although it is awkward for him to get around, Dr. Patrick missed only two days of class.

Schedule for Spring Registration Is Set

The spring semester registration schedule is as follows:

Monday, Tuesday and Wednesday, January 15 through 17, juniors. Sophomores can register Thursday, Friday and Saturday, January 18 through 20. Freshmen will register during final exam week, January 22 to 26.

Rev. Hammer to Lead Spiritual Emphasis Week Feb. 11 to 15

Pastor Norman Hammer, of North Hollywood, Calif., will be the main speaker at Spiritual Emphasis Week, to be held Feb. 11 through 15 in the Student Union Building.

Word was received at the Mast office that Hammer would like the prayers of students and faculty to be offered up to God in his behalf and for the meetings to be held. Hammer believes that the college family will receive blessing from God during the week of meetings only to the extent that they have prayed into it previously.

All club meetings will be cancelled during that week in order to devote more time for "Spiritual Emphasis" throughout the college. Hammer will be available for conference during the time he is at PLC.

Debate Teams Win Top Honors

Two PLC Oxford style debate teams tied for first place in a two-day debate meet at the Seattle Pacific college last Friday and Saturday. PLC also took two third place awards in the meet in which eleven colleges participated.

Only junior division teams from PLC participated.

Shirley Francis and Charlotte LaQua tied with Alan Haslen and Bill Rieke to win the junior division at Oxford style debate. Third place was taken by the team of Janet Carson and Joanne Schief.

John Rydger, PLC freshman, won third place in oratory.

Schools which were represented at the meet included CPS, PLC, U. of W., Western Washington College of Education, Guays Harbor Junior College, Everett Junior college, St. Martin's college, Centralia Junior college, Whitworth college, Seattle Pacific college and Seattle University.

Frosh, Sophomore Pictures Scheduled for Next Week

Schedules for the taking of pictures of several organizations and members of the sophomore and freshman class for the Saga have been announced by the annual editor, Bob Brass.

Sophomore pictures will be taken Tuesday afternoon, Jan. 16, in the SUB, following this alphabetical order: Persons with last names beginning with A through D at 4 o'clock, E through I at 4:15, J through L at 4:30, M through R at 4:45, and S through W at 5:00.

Organization pictures which will be taken that evening, January 16, will be Alpha Phi Omega at 7:00, LDR at 7:10, WAA at 7:45 and Viking club at 8:15.

Thursday afternoon in the SUB, freshman class pictures will be taken. Persons with last names beginning from A through D will report at 4:00, E through H at 4:15, I through L at 4:30, M through P at 4:45 and R through Y at 5 o'clock. That evening at 7:00 Tawasi pictures will be shot.

Boys must wear suits and ties, and girls dresses or suits for all of these pictures, except the WAA, for which the girls are asked to wear black sweaters and white collars, and dark skirts.

There will be a meeting in the Saga office at 4:00 Monday afternoon, January 15, for all persons who are interested in doing any type of work on the annual. An extra inducement for working is that if enough work is done by a student, he will get his name on the staff and an annual with his name engraved on the cover, according to Brass.

Juniors and DPK members are reminded that they must get their proofs in to the Campus studio by January 17, which is the absolute deadline, or their pictures will not go in the yearbook. Faculty members and seniors are requested to return their proofs to the Lutz studio by the 20th of January.

Austrian Teacher Now Attends PLC

Mrs. Maria Haynes, whose home is near Salzburg, Austria, is now taking additional hours at Pacific Lutheran College in order to teach in the United States.

She has studied in England, Austria, Switzerland and Italy and taught at the Teacher's Training Institute in Innsbruck, Austria from 1941 to 1945.

Maria is the wife of Captain Frazier Haynes of the United States Army, stationed at Fort Lewis and has a 14-month-old son, Charles.

Traffic Light's Green, Now You May Cross

Due to recent action of Harry Sprinker, local commissioner, and of the student council, a traffic light has been installed at Garfield Street and Park Avenue. "No parking" areas also have been designated in the area in front of the school.

These measures have been taken for the safety of the students and Lowell Knutson, student body president, said that it will be greatly appreciated if the students will continue to observe the yellow lines as well as they have in the past, and also adhere to the new traffic light.

"The traffic light was installed as a safety measure for PLC students, so we should abide by this light," said Knutson.

Orchestra and Band to Give Concert Thurs.

The band and orchestra will present a combined mid-winter concert next Thursday, January 18, at 8 p.m. in the SUB. A half hour performance is scheduled for each group, according to Harley Christopherson, director.

The orchestra will be featured in a number of selections which include Legend, Jazz Ragtime and Secret Marriage. Jeanette Foss will play a piano solo in Dream of Olwen.

The band will give several selections including The Red Mill, Mexican Hat Dance and Stars and Stripes Forever.

No admission charge will be made. Following the program, photographers from Tacoma will come to take pictures of the musical groups.

Book Review Planned For Sunday in SUB

Mrs. E. B. Steen, wife of the college pastor, will present a book review entitled "Portraits from a Book Shelf," at LSA this Sunday in the Student Union Building at 6:30 p.m.

She will use living pictures and copies of books as illustrative material. Mrs. Steen feels there is a wealth of material for present day Christians to look at in the exemplary lives of old and recent saints.

"Their lives have something to offer us and we shall endeavor to see what that 'something' is in 'Portraits from a Book Shelf' this Sunday evening," she said.

Jordahl and Adams Members of Tacoma Civil Defense Corps

Two PLC prof teachers, Dr. O. M. Jordahl and Harry S. Adams, have been appointed members of the radiological defense division of the Tacoma civil defense corps.

The corps has developed plans for setting in motion an organized procedure for defense against radioactivity should Tacoma be hit with an atomic bomb.

Special classes dealing with biological monitoring aspects of atomic warfare will be given and this group will be responsible for the training of local personnel who will lead technician teams into radioactive areas.

Nielsen Recuperates After Recent Illness

Recuperating at home after several days at Tacoma General hospital is Miss Anna Nielsen, director of teacher placement. Miss Nielsen was taken ill January 2.

Miss Nielsen hopes to be back to work very soon.

"Too many of us have been inoculated with small doses of Christianity which keep us from catching the real thing"—Dr. Louis Weatherhead.

Partial Credit To Be Given Drafted Men

Students who withdraw from college in order to enter the military service will receive partial credit for passing work, according to a faculty decision made last Tuesday.

All withdrawals must be made through the Dean's office and will be granted on the discretion of the dean.

Students who have satisfactorily completed the ninth week of work will receive one-half credit for their courses. If 12 weeks of work have been completed, two-thirds credit will be given. If 14 weeks of work have been completed, but final examinations have not been taken, three-fourths credit will be awarded.

Atomic Film Tells Ways of Protection

A special movie, "Pattern for Survival," will be shown at 4 p.m. in the SUB.

The film tells ways of protecting oneself in case of an atomic attack.

Ten Special Classes On Spring Schedule

Ten special classes will be offered during spring semester, according to Dr. Philip E. Hauke, dean.

The special courses include ornithology, public school mathematics, the American novel, history of Washington, history of Latin America, secondary school music, methods in folk games, introduction to physical science, rural sociology, and business and professional speech.

Registration for special students will take place during final examination week.

The Mooring Mast

Published every Friday during the school year by students of Pacific Lutheran College.
 Entered as second class matter, October 3, 1923, at the Post Office at Parkland, Washington.
 Office: Student Union Telephone: GRanite 8611
 Subscription price—\$1.50 per year

EDITOR JOANNE SCHIEF
ASSOCIATE EDITOR DON BREIMO
COPY EDITOR SHIRLEY MOLTER
SOCIETY EDITOR LENORA SURFACE
SPORTS EDITOR DAVE NESVIG
AD MANAGER ROBERT FERGESON
BUSINESS MANAGER BOB MEINEKE
 Business Staff—Shirley Sagehorn, Lenora Surface, Hazel Johnson
CIRCULATION MANAGER MARILYN SANNERUD
ADVISER HARRIET HANSEN
REPORTERS—Ernest Johnson, Jim Kerne, Naomi Roe, Melvin Smedley, Judy Bergman, Frances Biery, Bob Brewer, Lois Coates, Joyce Giese, Helen Hanson, Ivi Nulik, Bud Polson, Bob Marvonek.
 Printed on the Campus by La Crosse Printing Company

Looking Forward

Janus, the mythical god for whom the month of January is named, wore two faces, one looking backward, the other looking forward, to remind us that while we look back to the days that are past, we must live for the future. We can never go back. We must always go forward.

Time has now shut another door behind us, as Today becomes Yesterday and Tomorrow a mystery. Thus we become a little afraid, a little doubtful, reading what our future, especially in view of these perilous times, will hold in store.

It has been said that all life is growth, and growth means change, with a forward movement always. Starting slowly it swells to maturity and is harvested to make room for the newer growth that is to follow.

Indeed, we suffer pains of growth along the way, for change worries us. Losses of beloved and familiar things depress us. But such experiences only stimulate our growth, and tempered by unexpected joys, lightened by success, they lift our stature and heighten our power.

If the past year took some cherished thing, if some bright, gay dream faded, know that in its stead was given a recompense. Remember that change is not always a catastrophe, failure is not always the end, nor threats of disaster a reality.

The past year has had its grief, but it also has had its gifts and its many undeserved blessings. Now, as we enter the new year, we need to take along the memory of all the good we knew, both here and at home, and leave behind all the sadness, all the crushed hopes, and the many mistakes that brought us grief.

If we do this, and enter upon the new year equipped with a sure faith in our Lord, we shall have the Happy and Blessed New Year, full of good will, wished to all men everywhere.

Chapel Quotes

Dr. Phlueger:
 Christ's physical body died helplessly and hopelessly on the cross, but He arose triumphantly from the grave on the third day as the Savior of all men.

Prof. Remuad:
 Positive character traits to be cultivated:
 Physical qualities: Abstinence, chastity, cleanliness, courage, endurance, obedience and temperance.

Mental qualities: Ambition, concentration, confidence, contentment, diligence, discretion, enthusiasm, intelligence, judgment, perseverance, prudence and truthfulness.

Spiritual qualities: Charity, cheerfulness, faith, forgiveness, gentleness, gratitude, honesty, honor, hope, justice, kindness, liberality, love, loyalty, meekness, mercy, obedience, patience, peacefulness, sincerity, sympathy, truthfulness and zeal.

Dr. Phlueger:
 God makes the salvation of every soul in the world His chief business. Christ was the first great business man for he launched and finished God's business.

We, too, are all called to enter into a partnership with God in His business and help all people to come to know Him. If we think we are Christians, but are not according to God's standards, we will be severely judged and the name Christian will be taken away from us.

Dr. Eastvold:
 Why bother your congressman with a telegram about this world situation when you can pray to God who directs the world.

Sassity Sal

It wouldn't be beginning the New Year resolutions right unless I introduced more poetry, if that's what you call it. But, of course, I never make new resolutions, I just use the old ones.

I resolve in fifty-one,
 To study less, have more fun;
 Make more money, spend it lot,
 Complain of all the things I've got.
 Meet more jerks, buy more clothes,
 Wait until classes to take my dose.
 If all these things I plan—I do,
 I'll be a mess come fifty-two.

MARIE OGREN—wanted to surprise us, but we weren't too surprised

HARRIET OLSON, HOWARD SHUL, ANNE KNORR, MILT HEFTY, HAZEL JOHNSON, BILL FINKLE, MARILYN SCHWERIN, GEORGE TORGESON, HARRY MALNES and YOURS TRULY—brought in the New Year at Portland, Oregon . . . POPPA JUSTICE and the MRS.—brought in the New Year!

The vacation invited the scissors on some PLC beauties, including SAGEHORN, BENNETT, SIMPSON, HINRICKS, etc. . . . BILL WADELL—received a pair of socks for Christmas . . . DONN KESSLER—and so life goes on, odd isn't it . . . HAL FOSSO—well, he made it back, anyway . . . EDDIE McCALL—What happened . . . MARLENE SCHWENKE—during the jolly season was misled by the "BACHELOR" JOHNSON . . . AL VERLINDE—hit the jackpot with a car and the women . . . DOUG HENRY—received but also gave . . . NORMA ANDERSON—didn't forget to bring her jolly self back . . . C. PROCTOR—now spending most of her time making up gym classes . . . ELAINE MIKKALSEN—no date for it yet . . . MARIANNE STACY—up in the clouds, over KLETT, that is . . . DOROTHY MOLUND—studied real hard during Christmas vacation . . . SHIRLEY WALL—it's been a long time . . . KARL BACHNER—getting down to business . . . JANET GAVEN—took the final step . . . SKIBO—received an egg beater for Christmas to comb his hair.

Love and sweet nothings,
 SAL.

It has been found that about four-fifths of persons vacationing in Washington State used the automobile as their principal method of travel.

WINTHROP MEN'S SHOP

784 Broadway MA. 6635

SPECIAL!!
 Try Our Thick, Creamy MILKSHAKES
McCAY'S ICE CREAMERY

Order Personalized Christmas Cards Now!
C. Fred Christensen STATIONER
 913 Pacific Ave. BR. 4629
 Tacoma, Wash.

Diamond Rings Are Proof That "Santa" Was Generous to Coeds

Chocolates were passed frequently during the month of December among the girls of the Delta Rho Gamma. Beverly Keller, a former student of PLC and DRG and is now teaching at Central Avenue school, announced her engagement to Walter Klapstein, who is attending Dallas Theological Seminary, Dallas, Texas.

Bonnie Hearn announced her engagement to James Ridicks, a graduate of '49 and who is now teaching in Milton, Wash.

Marianne Stacy, at the DRG Christmas party, announced her engagement to Robert Klett, a graduate of '50 and who is now teaching in Aberdeen, Wash.

Dorothy Molund went a step further on December 16th and changed her name to Mrs. Stanley Tiedeman. Mr. Tiedeman attended PLC in '48, '49 and '50 and is now working at the Mt. Rainier Ordinance Depot.

DPK's Have Rings, Too
 Four DPK's arrived back on the campus with rings on their fingers, too. Doris Jensen, sophomore from Renton, received her ring from Chester Hansen.

Student body secretary Maria Ogren announced her engagement to Roy Larson, PLC grad of last year and son of Rev. Roy Larson of Bethel Lutheran Church.

Corinne Aune, senior in education, is engaged to another PLCite, Leroy Spitzer, a junior from Kennewick.

Shirley Pietz, freshman from Olympia, received her ring from Leo Hannibal.

Out-of-state tourists to Washington State contributed an estimated \$2,700,000 in gasoline tax revenue in 1950.

Students Scatter During Vacations

"Over the hills and through the snow to Grandmother's house we go." 'Tis true, the PLC family went home en masse for Christmas to all parts of our country.

We found Melba and Nelda Erickson, Darlene Waldron, and Eddie Gunderson packing their grips for Montana. Inga Astrup had her train reservations for North Dakota far in advance, as did Carol Emerson for California. That sunny state had a number of homecomers this last Christmas. Janet Carson, Jens Knutson, J. P. Carlstrom, Jerry Carlstrom and Marion Christenson were but a few of them.

Oregon claimed a number of the holiday group, too. Ron Sterland and Judy Larson headed for Klamath Falls and Bill Finkel, Bill Williams, Marianne Pfeiffer, Darleen Hall and Jo Meyer were but a few that are Portland bound.

Bob Marvonek went all the way to Chicago and a large number headed for Idaho. Then there are the many students' homes who are near Parkland, but wherever they went, everyone claims he had the best time ever. "We missed PLC, though," several nostalgic students admitted on returning last week.

LaCrosse Printers

Cards
 Posters
 Announcements

LOCATED IN OLD CHAPEL BLDG. ON THE CAMPUS

Printers of Your Mooring Mast

Amy Brown

See POP for Two Bags of **Pop's Pop Corn**
 FREE — That's Right — FREE

Neal E. Thorsen

TRICKS - JOKES - MAGIC
 Costumes - Tuxedos - Serpentine
 926 1/2 Broadway MA. 4861

DANIELS HARDWARE

ON THE HIGHWAY CORNER
 PACIFIC AVE. & GARFIELD



PIPER FUNERAL HOME
 Phone Hillside 8479
 5436 So. Puget Sound Ave.

LET'S ALL MEET AT Busch's Drive-In

FOR THOSE DELICIOUS **HAMBURGERS AND THICK MALTS**

FAVORITE MEETING SPOT OF ALL STUDENTS

OPEN UNTIL 5:00 A.M. ON SATURDAY AND SUNDAY
 3505 South Tacoma Way

Patronize Your Advertisers

Brookdale Lumber Company

Brookdale GR. 8669

PUGET SOUND NATIONAL BANK OF TACOMA

SERVING TACOMA SINCE 1890

Three Leagues Battle As Intra-mural Slate Begins

The 1951 edition of the PLC intra-mural basketball program swung into action with four hotly contested battles. Emerging the victors were the Beavers, Bethel, Nip'n Tuckers and Mongolians.

Annually the intramural games draw large crowds and much student body interest. 1951 should be no exception.

The various quintets have been divided into three leagues, the Sunset league, Evergreen league and Ivy

Evergreen league will be waged between the Hot House Boys and the Mongolians, the edge going to the Hot House Boys.

Perhaps the toughest chase of all will be in the Ivy league. Standing out above the rest in this league are the rugged Ballard Burns, the Black Sox and Sayer's Players.

Following are the league standings and schedule.

INTRAMURAL SCHEDULE

Friday, January 12

Neal's Wheels, vs. Lower Sloboviats, 7:00 p.m.

Black Sox vs. Sayer's Players, 7 p.m.
Missouri Mules vs. Ballard Burns, 7:45 p.m.

Beavers vs. Bethel, 7:45 p.m.
Wild Geese vs. Things, 8:30 p.m.
Hot House Boys vs. Mongolians, 8:30 p.m.

Tuesday, January 16

Vultures vs. Castle Rockets, 7:00 p.m.
Hot House Boys vs. Nip'n Tuckers, 7:00 p.m.

Sloboviats vs. Ballard Burns, 7:45 p.m.

Sayer's Players vs. Missouri Mules, 7:45 p.m.

Neal's Wheels vs. Black Sox, 8:30 p.m.
Bethel vs. Wild Geese, 8:30 p.m.

SUNSET LEAGUE

	Won	Lost	Tied
Hasbeens	1	0	0
Bethel	1	0	0
Things	0	1	0
Wild Geese	0	1	0
Beavers	0	0	0

EVERGREEN LEAGUE

	Won	Lost	Tied
Mongolians	1	0	0
Nip'n Tuckers	1	0	0
Vultures	0	1	0
Castle Rockets	0	1	0
Hot House Boys	0	0	0

Mr. John Smith, line marker at football games, expresses his appreciation to the football team for the flowers sent him during his recent hospital illness. He received an unusual flower arrangement in a square container resembling a line marker with two sticks connected by a chain.

Lutes Open Hoop Chase With 2 Wins

The Pacific Lutheran College Gladiators opened the Evergreen Conference schedule with two convincing and very important victories. Thursday night the Glads defeated the St. Martin's Rangers, 46-26, and on Saturday night the Loggers from College of Puget Sound were beaten by a 68-54 score.

Counteracting a zone defense with some accurate shooting from outside the Lutes defeated the St. Martin's Rangers, 46-26 in the Evergreen Conference opener for both schools.

Hitting from the far reaches against a zone defense which proved about as puzzling as a comic book mystery, the Lutherans jumped into an early lead and had the situation under control all the way.

In the first 20 minutes, St. Martin's was able to hit only twice from the field, although it must be admitted showed a general reluctance to aim, much less fire.

While the Rangers were fooling around, the Glads were shooting with deadly accuracy from right around the "key hole" and jumped into a 12-0 lead by the five-minute mark. Midway in the first half they were ahead, 18-4 with Glen Huffman accounting for one-third of their points with well-placed one-handers.

At the 10-minute mark the Rangers were still in their zone and showed no particular desire to come out and get the ball. The Lutes, in turn, were content to go along with their lead.

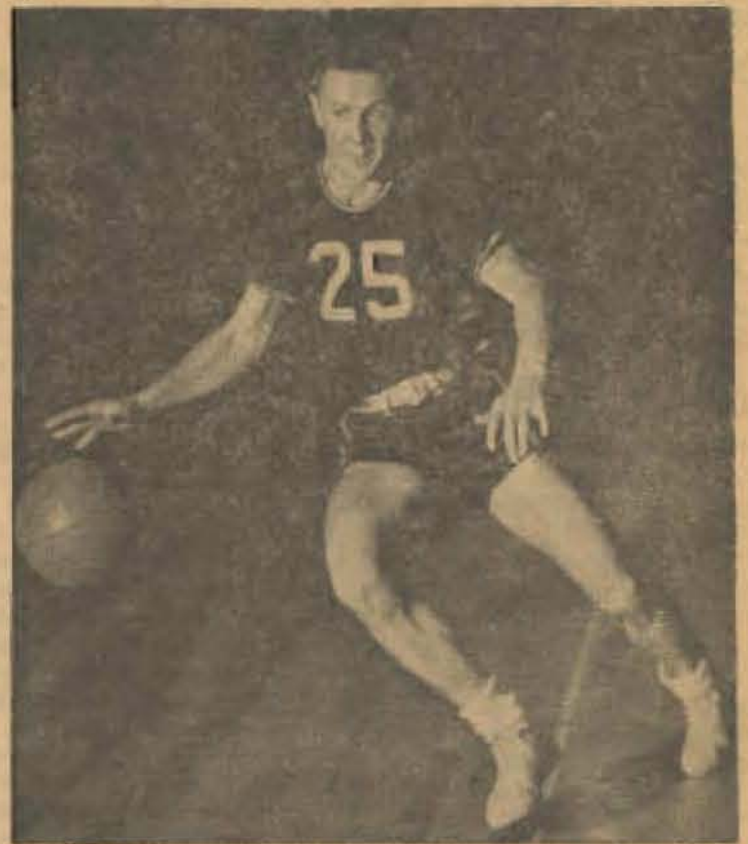
The stalling tactics had the desired effect and finally forced the Saints to come out of the zone and resort to a man-to-man defense. Action then speeded up.

In the second half the Lutes were able to pump in 23 points while the Rangers accounted for 21 as some of their shots began to drop in.

Gene Lundgaard led the Lutheran scoring with 14 points, while Ben Dion did most of what little scoring the Rangers did with 11.

On Saturday the Glads beat their cross-town rivals, the College of Puget Sound, for the second time this season. The first time it was for practice; this time it counted.

The story of this game was much the same as it was in the earlier PLC victory over CPS. The Lutes simply jumped into an early lead, held a



NUMBER ONE reserve for the guard slot in the Lutheran basketball five this season is Ed Brown. He is a transfer from Olympic J. C., where he played as a sophomore two years ago. Ed stands 5'10", weighs 160 pounds and is 21 years old. An adept ball handler and good shot, he should see considerable action this weekend.

comfortable margin at half-time, and then battled to protect the victory after the intermission.

The Loggers took a 1-0 lead when Gibbs hit a free shot, but that was the last time they were ever ahead of the Glads.

At the ten-minute mark the Lutes were out in front 19-12, and at half-time they were holding a 38-25 lead over the heads of the Loggers.

In the second half the Loggers and Lutes battled on virtually even terms with the Glads being able to manage but a scant one-point more in the final 20 minutes.

Jake Malvery led the Logger scoring with 20 points while Lundgaard and Berenson did the point getting for the Lutes, Lundgaard getting 28 while Berenson was pouring in 20.

PLC	Pos.	St. Martin's
Malvery (4)	F	(3) Sullivan
Huffman (8)	F	Armstrong
Lundgaard (14)	C	(11) Dion
Berenson (5)	G	(3) Donohue
Wells (11)	G	(4) Kelly

Subs: PLC—Brown (2), Amundson (2); St. Martin's—Brock (3), Mahoney (2).

PLC	Pos.	CPS
Malvery (6)	F	(4) Maitland
Huffman	F	(2) Danielson
Lundgaard (28)	C	(12) Gibbs
Wells (7)	G	(20) Malberry
Berenson (20)	G	(11) Gilchrist

Subs: PLC—Amundson (1), Brown (2), Ross (5), Billings (1); CPS—Sater (2), Rotholz (3).

"Sawyer Brain—Had a date.
High Octane—Kind of late
Met a train—High speed rail
Scattered brain, Pearly Gate."
—Rocky Mountain Echo, Billings Montana, Nov. 7, 1950.

Glads Invading Western, U.B.C. For Hoop Tilts

This weekend the Gladiators will not be playing at home, but they will be seeing plenty of action in Bellingham and Vancouver.

On Friday night the Western Washington college Vikings entertain the Lutes at Bellingham, while Saturday night the Glads play the University of British Columbia Thunderbirds in the Canadian city.

Both games should be good ones from a spectator viewpoint.

Western has a fairly good ball club this year despite two league defeats already. With the return of such lettermen as center Dick Ravenhorst and the fact that the game will be played on Western's home floor, the Vikings could be very tough to beat.

The University of British Columbia, despite the loss of center John Forsyth, has a better than usual team this year.

In pre-season games the Thunderbirds looked very good at times, posting victories over both Western and Central U.B.C. last two games to the Vancouver Clowleafs and four games to Seattle University, but it seems that everybody is losing to Seattle U., so that is no disgrace.

With the deliberate style of offense employed this year at U.B.C. the Thunderbirds had the Eastern Washington Savages a little confused during the last half last Saturday and could easily do the same to the Lutes this Saturday.

It should also be remembered that U.B.C. handed the Lutes their first league defeat last season.

The Lutherans have looked pretty good the last two times out, but they will have to be on their toes to survive this weekend without a scratch.



league, according to ability. When the first round of games has been completed, the top three teams of the Evergreen and Sunset leagues, plus the top four teams of the Ivy league, will enter into two five-team leagues. The top two teams of each league will then enter into a four-team tournament to determine the champion.

Pre-season favorite to top the hunting in the Sunset league are the Beavers. They boast an iron-man five composed of Glenn Warner, Bob Dinwiddie, Walt Olsen, Lowell Knutson and Rick Daniels. Running a strong second are the Hasbeens.

A close race for the title in the

Stop at . . . VERN'S

For A
Whamburger!

Over-sized Hamburger with Mayonnaise, Lettuce, Pickle, Onion and our SPECIAL RELISH

Old English Fish and Chips
Home-made Pie and Cake

NINTH & PACIFIC

PARKLAND AUTO PARTS

IN CONNECTION WITH

Parkland Fuel Oil & Service Station

Granite 8112

Parkland, Wash.

SWEATER CENTER

for GUYS and GALS!



THREE-DAY SERVICE

on Laundry, Cleaning and Repairing

AT

Fashion Cleaners

PICK UP and DELIVERY

GA. 3372

3820 Yakima

Fisher's Tacoma

11th and Broadway

BR. 4242

PARKLAND XXX

MERCHANTS LUNCH—55c

Full Course Dinner—11 to 9

— COMPLETE FOUNTAIN SERVICE —

PARKLAND

TWO BLOCKS NORTH ON MT. HIGHWAY

Mrs. Frisbie's BAKERY

For Good Bakery Products
710 So. 38th St. GA. 7591

Editor Asks for Student Opinion On Present Chaotic World Situation

(Editor's Note: Excerpts from letters received from PLC students are printed below. We feel that a newspaper should be an outlet for controversial opinion, so if you have any constructive criticism to make, please send it to the Mooring Mast office.)

College Papers Give Insight On Jobs and Books

What's going on at colleges throughout the nation? Notes from college papers give an insight into college life.

"Red Cross bloodmobile visits Fort Greve on January 3. All students are urged to give blood..."

—Pacific University Index

"Professors and Mrs. Gunnar J. Malmuin have published their third collection of songs for Junior college singing. The book came off the presses of Augsburg Publishing House last week..."

—The Western Lutheran

"If ever a people needed help it is the Koreans; a person in the U. S. can't conceive how poor they are. Their clothes are in shambles and the few clothes they have with them are not adequate during this cold winter..."

—By a soldier with the 8th Army in Korea. The Concordian, Concordia College, Moorhead, Minn.

"A scholarship trip to Europe next summer with all expenses paid will be awarded to the person who writes the best essay entitled, 'Why I Would Like to Go: Hoteling in Europe.' Entries must be postmarked not later than April 15, 1951. Full information and application forms for the scholarship may be obtained from National Headquarters, American Youth Hostels, 6 East 39th St., New York 16, N. Y..."

—The Concordian, Concordia College

"College girls interested in careers with the United Air Lines as stewardesses may write to F. K. McCroskey, United Air Lines, 411 Douglas Bldg., Seattle, Wash., for personal interviews..."

—Pacific University Index

Servicemen to Get Paper, News Items

Students and faculty members are requested by the student council to turn in the names and addresses of all servicemen, connected in any way with the school, to the switchboard. Tassels will participate in gathering the information.

Weekly issues of the Mooring Mast and other school activity lists will be sent regularly to these servicemen.

Patronize Your Advertisers

WEDDINGS - CORSAGES
FUNERALS

Stella's Flowers
Artistry in Flowers

Parkland Center GR. 7863

Korean Situation Aired

"With the world in this troubled state, a definite change should be made. I feel our main trouble lies in the U.N. The Acheson plan should never have been passed. It leaves Russia and her satellites completely out of the U.N., thus forming two power blocks, non-Communist and Communist. This is a definite incentive for war."

"What the world needs is faith. If the people of the world had put their faith in the U.N., the present situation would have a brighter side. If each individual nation in the U.N. had wholeheartedly cooperated with the Korean situation, the struggle could have been met successfully."

"Since it looks like the Acheson plan is here to stay, I feel the U.N. really no longer exists. I think we should form a federation of the non-Communist nations which would give them protection with a combined military force and I think we should draw our troops out of Korea..."

Opposite View Given

"The U. S. cannot survive without cooperation from outside our continent. Isolationism will not succeed. The U. S. is in a position where she cannot leave herself open to attack. She must participate in world affairs. Of course, just how far, is the question. Russia is using our foreign policy to milk us dry. But we must be firm, or the Communist nations will trample countries throughout the world..."

—B.S.

Communism vs. Democracy

"A basic consideration to take in the present world situation is that democracy and communism are both likely to continue and exist in the world. History has proved this. In the past the Catholics and Protestants have jangled and yet they are now both existing and are somewhat peaceful."

"I think that the U.N. should abandon the Acheson plan and all other solutions which have been developed and reaffirm their stand in the U.N. Instead, we should work through the Economic Commission of the U.N..."

Tuberculosis is a communicable disease, spread by persons who have the disease in active form.

Former Norwegian Student Marries

Knut Aas, PLC grad of 1948, informed Miss Knudsen by letter from Norway that he was married last October.

Aas is well remembered as former flag king, member of the PLC tennis team, and manager of the golf course. A foreign student from Norway, Aas is working as a translator and spokesman of the Catholic Corporation in Oslo.

Soundproofing Keeps Library Very Quiet

All's quiet in the library, thanks to the expensive soundproofing material in the new building.

The creak felt floor which amazes everyone by its elasticity muffles the usual scuffling sounds. The flooring is treated with oil and coated with wax for a lasting surface.

"Because of its softness, the floor is easily dented," Mr. O. J. Sturn, head librarian said. "It will last much longer if students remember to be careful with their chairs and shoes."

The library ceiling also is soundproofed with a layer of acoustical material.

Spanish Club Will Sponsor Two Movies

A double-feature movie including "South to the Sun," in technicolor, will be shown at 7 p.m. January 19 in the SUB. The second feature will be announced later.

The movies are sponsored by the Spanish Club and the nominal admission charge of 10 cents will be asked.

"Enrollment in Lutheran-Colleges of the United States has dropped off 8.7 per cent from last year, it has been reported by the Lutheran college information service at Wittenberg College." — The Augustana Minor, Augustana College, Sioux Falls, S. D.

"Men will carry guns until they learn to carry the cross. To avoid that run-down feeling, cross the street careful. We should be more interested in the human race than in a horse race. A Christian is the best argument for a Christianity. An optimist laughs to forget, a pessimist forgets to laugh..."

—The Western Lutheran

Whenever an individual or a business decides that success has been attained, progress stops.—Thomas J. Watson

Parkland Postmen Take Beating From Girls With Too Many Friends

By Joyce Goss

The scene is the city of Parkland, Washington, the place is the post office and the time is any time during the day. We see Ingaborg Knerik hurriedly running down the street toward the post office.

As she runs, her roommate, Birgit Ahlgren, calls to her. "Don't forget to ask for Dina, Ebba, Elsa and Kina. Breathlessly Ingaborg hurries to the post office."

Ingaborg hurries to the post office window and asks for her mail and her pals. The genial postmaster looks for the mail while Ingaborg, with a frowning look, humps herself over the window ledge. "Are you sure there's nothing for me—you better look again. I am sure there is a letter from Gustaf."

With a shake of her head, Ingaborg still persists she has some mail. Finally giving up, she says, "Well if there isn't any for me, there must be some for Birgit; you look again and make certain."

Disgustedly he looks again and assures her there is no mail for her or the others with the exception of Ebba, who received a letter from Axel. Thoroughly put out, Ingaborg leaves with a sigh—ho, maybe we'll get something in the next mail.

Groaning with an inward sigh the postmaster goes back to work to await the PLC INQUIREE. Soon Birgit Ahlgren comes bursting in and says, "Did Ingaborg ask for me. Oh, she did. Well is there any mail for Dina, Ebba, Elsa or Kina? Are you sure; well, you better just look again."

Frowning, the postmaster looks and trying to control himself says there is none. Not over ten minutes have passed since Birgit has left when Ebba comes in and asks for all the girls again just to make sure the post office hasn't overlooked any mail for them.

So the day progresses in the usual manner for the Parkland post office.

The moral of this story is that postmen, too, have to make a living.

Patronize Your Advertisers



13TH & BROADWAY
TACOMA, WASHINGTON

Musical Notes . . .

ORGAN GUILD:

The Organ Guild is making plans for a concert the first part of February. This concert will feature leading organists on the campus as well as various other musical organizations.

QUARTET:

A popular organization on the campus is the newly-formed Quartet. Members are Louise Stephenson, Allan Laurson, Clifford Johnson, Helen Huswick and Evangeline Rimbach, accompanist.

CHORUS:

The Chorus, under the direction of Gunnar J. Malmuin, is preparing for its annual tour. This tour will be held the week of Washington's birthday and will include concerts in Washington and Oregon.

Patronize Your Advertisers



717 TACOMA AVE. Phone MAIN 7745



- ★ COLLEGE OF ROSET SOUND
- ★ PACIFIC LUTHERAN COLLEGE
- ★ STEPHEN HIGH
- ★ LINCOLN HIGH
- ★ SHERMAN HIGH
- ★ FOYVALLUP HIGH
- ★ VISITATION VILLA
- ★ FEDERAL WAY HIGH
- ★ CLOVER PARK HIGH
- ★ ST. LEWIS HIGH
- ★ ST. MARTIN'S COLLEGE

Every Wednesday
During School Year

6:30 P. M.

KMO 1360 on
Your Dial

8:30 A. M. Sunday
9:30 A. M. Saturday

Sponsored by

TACOMA CITY LIGHT

MEAT SALBS AND
PROCESSING FOR STORAGE

PARKLAND
LOCKERS

A. J. (Slim) STERN

11012 Pacific Ave. GR. 7111

WE WILL BE PLEASED TO SERVE YOU —

Groceries .. Meats .. Vegetables
Frozen Foods

FLETCHER'S MARKET

FREE DELIVERY

GRanite 8350

EVERY YEAR
since its first year, Lutheran Brotherhood has shown a steady and consistent growth. It has always operated on the sound foundation of the time-tested legal reserve plan. Lutheran Brotherhood is purely mutual—it belongs wholly to its policy owners.

Lutheran Brotherhood

Legal Reserve Life Insurance for Lutherans

MINNEAPOLIS 2,

HERMAN L. EKERN, President

MINNESOTA

GARFIELD STREET
Phone GR. 5221 or GR. 6961

JESS W. THOMPSON
NYER URNESS

PARKLAND
Washington

Build Your
Estate Now!

★

Your Future
Starts Today