

# Kansas City, Here We Come!

## Sweepstakes Taken By PLC At Linfield Speech Tourney

PLC speakers won eight first-place awards to take the junior division sweepstakes in the Northwest Invitational Forensic tournament at Linfield college in McMinnville, Oregon, last weekend. PLC was also given the first alternate bid to the West Point National Speech Tournament.

## Marine Corps Offers Special Officer Program

Lt. Charles Dines, a U. S. Marine Corps procurement officer, will visit PLC Tuesday, March 27, to interview students interested in becoming officers in the Marine Corps Reserve.

There are two programs, the officers candidate course for seniors and mid-career, and the platoon leaders class for undergraduates.

Qualified seniors and graduates enrolling in the program will be exempt from selective service induction. They are required to attend a 10-week basic indoctrination course prior to being commissioned, after which they will attend a three-month basic officers course.

Undergraduates enrolling in the platoon leaders class will be exempt from selective service induction and can complete their college education. They are required to attend two six-week summer training courses during their college career.

Howard Shull and Milton Hefty, PLC students, are enrolled in this program. Stanley Ekstrom has qualified for the officers candidate course. The Marine Corps has a parallel program for women college graduates and undergraduates, leading to positions as officers in the women's branch of the Marines.

Pamphlets and further information on the program are available in the registrar's office.

A doctor will accompany Lt. Dines when he visits the campus. Students who have filled out application forms, also available in the registrar's office, may take their physicals the day of the visitation. If they pass the physical they can be signed up for the program that day.

## State Constitution Approved By FTA

Rho Lambda Chi (FTA) took final steps toward state recognition of the chapter at the last meeting, Feb. 27.

The group approved the constitution of the Washington Education Association to complete recognition requirements. President Kenneth Moe outlined the provisions of the constitution before it was voted upon by the members.

School activities discussed were the sponsoring of a booth at the Saga Carnival and the planning of a cruise and a picnic later this spring.

Marie Haglund and Wes Benson were appointed chairmen of the booth committee.

## Sanatorium Patients Hear LSA, Spurs

The LSA and Spurs are cooperating in an important service project this semester.

The groups alternate each week in sending student entertainment to the Mountain View Sanatorium.

In the junior division, Bill Rieke took second place in the junior men's extemporaneous speaking; Joanne Schiel took first in women's extemporaneous; John Rydgren was first in oratory; Charlotte LaQua first for women in after-dinner speaking; Bill Rieke tied for third in men's after-dinner speaking; Rydgren tied for first for men in acting; Rieke was first in men's impromptu, and Shirley Francis was first in women's impromptu.

Jon Erickson took first place in senior men's interview, first in student congress, and fourth place in senior men's oratory. In this senior division, Mary Larson tied for second place in the senior women's one-person debate, and took fourth in the senior women's extemporaneous.

PLC won the sweepstakes in the junior division by 24 points. Linfield was second and the University of Oregon was third. Forty-four colleges from nine states participated.

## Eastvold and Steen Give Lenten Sermons

Dr. S. O. Eastvold will speak at the Central Lutheran church next Thursday at 7:30 p.m. He will continue his series of addresses by speaking on the topic, "A Shipwrecked Governor."

"His Grace for Us" is Rev. Ernest Steen's own Lenten topic to be given at Trinity Lutheran church Wednesday, March 14, 8:00 p.m.

## Comedy, Tragedy On Civil Defense Benefit Program

Curtain Call club will present two one-act plays for the benefit of the Parkland Civilian Defense committee next Friday evening, March 16, to audiences in the Parkland gymnasium. The plays will also be presented Saturday evening, March 17, for PLC play-goers in the SUB auditorium.

"And Sincerely Seal Away" is a comedy, and is directed by Roberta Schoessler. The plot involves the efforts of a young couple to move out of their apartment without the knowledge of their landlady. These two are played by Joan Gardner, who is Margie, and Dale "Spider" Keller, who portrays her husband, Joe.

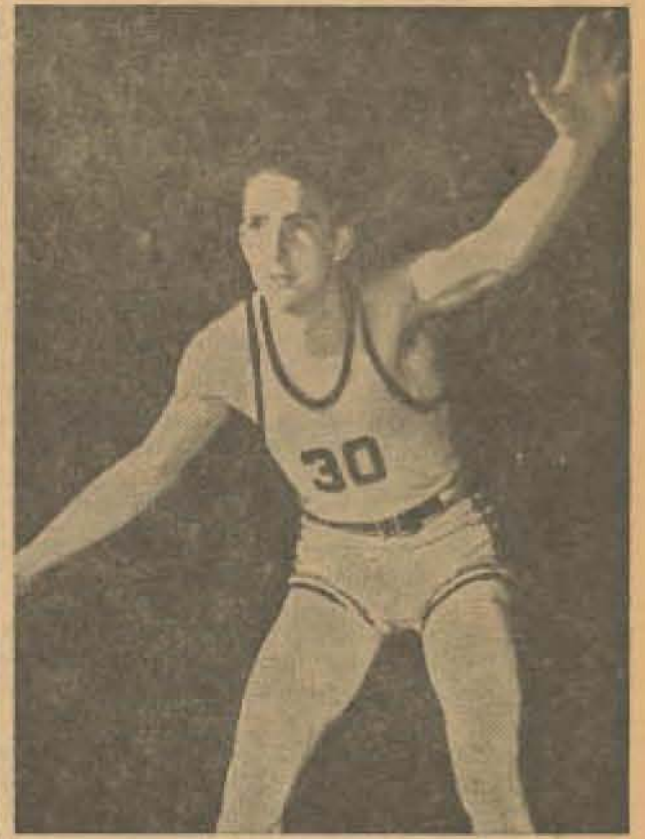
They are helped and hindered in their attempts by two other roomers in the apartment house, Fred, who is Howard Shull, and Gertie, a chorus girl (second-rate), acted by Dorothy Broomfield.

This play will also be produced at American Lake Veterans' Hospital, March 14, and at the Kiwanis organization, March 29.

Margaret Katz is director of "The Monkey's Paw," a dramatic tragedy by Edgar Allan Poe. This suspenseful play shows the three wishes of three people. The three people are Mr. and Mrs. White, played by Karl Bachner and Frances Biery, and their son, Herbert, who is Glenn Werner. An old soldier, Sergeant-Major Morris, is the part played by Bill Finkle.



CAPTAIN LUNDGAARD



"SPARKPLUG" WELLS

# The Mooring Mast

VOL. 28

PACIFIC LUTHERAN COLLEGE, FRIDAY, MARCH 9, 1951

NO. 16

## Viking Club Mixer Tomorrow

The Viking club will be host at an all-school mixer in the SUB tomorrow night.

Previously, Alpha Sigma Lambda, business club, had planned a skating party at Lakewood but arrangements could not be made to get the rink.

## Lute Hoop Quintet Wins N.A.I.B. Spot

The Lutes did the impossible and now they're riding joyously to Kansas City!

Yes, the Harshmen defied the law of averages and made the sportswriters eat their words when they beat the CPS Loggers 52-51 for the fifth straight time this year to qualify for the biggest of all cage tournaments, the N.A.I.B. in Kansas City.

In the dormitories, private homes and every place where PLC basketball enthusiasts were patiently awaiting the final outcome of the all-important contest in Spokane, a cheer went up that rocked Parkland and Tacoma to its foundations, when the score was announced.

Likewise, in chapel and at the Milwaukee train depot, from where the PLC cages embarked, the student body, faculty and band paid tribute to the Gladiator athletes and their wonderful spirit, cheering them on to victory in the national meet.

Thirty-two teams will congregate for a pre-tournament banquet Sunday evening, March 12, where the drawing will be made for tourney play. The Lutherans will hardly be rested from the long train ride when they begin play, the following day.

Coach Mary Harshman took a squad of twelve men with him, consisting of Captain Gene Lundgaard, Bert Wells, Gerry Hefty, Duane Berntson, Glen Hoffman, Ed Brown, Lee Amundson, Ray Green, Bob Ross, Garnet Lund, Ron Billings and Don Koessler.

PLC 52, CPS 51

The final contest saw defeat change to victory in the last five seconds when Gene Lundgaard took a pass from "Tiger" Lee Amundson under the bucket all alone and layed it in to make the final score read, PLC 52, CPS 51.

Jake Mayberry, CPS guard, stopped

Continued on Page Three

## Debate Squad To Tourneys

According to Mr. T. O. Karl, head of the speech department, the St. Martin's Speech Tournament held on the St. Martin's college campus March 16 and 17 is "one of the most interesting tournaments we attend during the year."

Approximately 20 colleges will attend the third annual invitational tourney and the debate divisions will be limited to two men's and two women's teams from each school. Individual events at the contest will not be limited; however, only two people can enter in the discussion department.

Two years ago PLC won the debate and sweepstakes trophy and last year the debate squad lost the men's sweepstakes by a half point in Pacific University and the women's division by two points.

Competing in the various events will be Mary Larson in one man debate and extemp; Shirley Francis in debate, impromptu and extemporaneous speaking; Charlotte LaQua in debate, impromptu and extemporaneous speaking; Janet Carson in debate, discussion and extemp; speaking; Joanne Schiel in debate, oratory and extemp speaking; John Rydgren in oratory and interpretative reading; Jon Erickson in debate, oratory and extemp; Bill Rieke in debate, im-

Continued on page 4



# The Mooring Mast

Published every Friday during the school year by students of Pacific Lutheran College.  
 Entered as second class matter, October 7, 1925, at the Post Office at Parkland, Washington.  
 Office: Student Union Telephone: GRanite 8611  
 Subscription price—\$1.50 per year

EDITOR DON BRIMMO  
 ASSOCIATE EDITOR JOANNE SCHIEP  
 COPY EDITOR FRANCES BERRY  
 FEATURE EDITORS JUDY BARGMAN, JOYCE GENZ  
 EXCHANGE EDITOR ERNEST JOHNSON  
 SPORTS EDITOR DAVE NESVIG  
 AD MANAGERS KEN JOHNSON, LES MCKAY  
 BUSINESS MANAGER BOB MEINEKE  
 CIRCULATION MANAGER MARILYN SANNEKUD  
 ADVISER HARRIET HANSEN

MEMBERS—Ernest Johnson, Jim Coleman, Judy Bargman, Frances Berry, Charles Porter, Doris Shaw, Vaughn Nelson, Lois Gates, Joyce Genz, Bill Williams, Dale Kellier.

Printed on the Campus by La Crosse Printing Company 4

## Spring Spells Success

Spring is approaching. Impatiently we await its coming. In spite of the snow flurries there are signs and tokens of its nearness in field and wood and sky, indications which are not to be mistrusted.

Clover Creek is running freely, chuckling over the colored stones that line its banks, and the tree tops rise tall and serene in the warm sunshine. Blades of grass are peeping through the blankets of snow in the emerald color they were only once a year. Ragged snow clouds move hesitantly across the clear blue sky. The quiet is broken only by the plaintive robins call, and the breath of the sighing wind dances through the pussywillows, sweeping before it the lovely months of springtime.

Speaking of spring seems to remind us of the blessed and successful year our college has had during this second semester. Just as we are captured by the new season so we are equally thrilled by the accomplishments and triumphs of the speech, athletic and music departments. Thanks and praise are also in order for those clubs and silent individuals who have concentrated their noble efforts in making this campus a lovelier place to live and study, and to those who have been the good ambassadors for PLC on the campus and especially out on the highways and byways of their home towns and cities.

Indeed, just as spring is sometimes a long time in coming, so is success. To all who have attempted to attain it, it is a well known fact the success does not come in sealed envelopes waiting to be opened. Rather it is the result of labor, sacrifice, patience, faith and understanding. But it seems that the students on the campus this season have found the formula and have made good use of it.

This spring as never before has brought fame and recognition to the outstanding spirit and work of the college. Truly we are a student body and faculty with high ideals and aims and with God's help we can lead the way to other successful and glorious semesters.

Looking back on other campus springs we realize that this special year is not due only to the efforts of 1950-51, but a grand culmination of the dreams and work of those who have gone on before. Let us thank God for this especially blessed semester and for those who have sacrificed to make it possible, and pray that other springs may be as successful.—J. S.

## Chapel Quotes

**Dr. Mueger:**  
 God has provided a Lamb . . . it is that which makes our salvation so sure.

**Paster Halverson:**  
 One cannot put on sanctification and put it off again like Sunday clothes.

A Christian is one who is evermore becoming what he is.

**Rev. Haugen:**  
 Man has tried for centuries to lift himself out of the ditch of worldly sin by his own boot-straps, but all he has succeeded in doing is to sink deeper.

Are you ashamed of Jesus, or do you dare to become a living witness for Him?

## - Idle Talk -

By J. G. and J. B.  
 The weather outside is frightful  
 But school is so delightful  
 And since we have no place to go  
 Let it snow, let it snow, let it snow.  
 Snowballing as well as some sled-dine and skiing were popular this past week on the campus. And then there were fellows like Bill Hampton, Herb Neve, Bill Ness, and Everett Savage who had fun making snowmen in the back of Old Main. In dressing for the cold weather, Betty Hall, Beverly Sjoelen, Jean Stalberg and Marilyn Sannerud showed off new ski outfits.  
 Snowdrifts didn't stop the Organ Guild from hearing an organ concert in Tacoma Tuesday night.

A path was soon made to the library this past week through the snow as students tore apart the stacks for term paper information. A few of the hard working students were Arlene Wamgenstein, Don Ellingson, Bud Polson, Holger Neilson, Martha Coolick, and Margaret Hollbrook.

It seems cold weather and snow have affected the health of some members of the PLC family. Among those under the weather are Edith Engel, Melba Erickson, Betty Logan, and Judith Bargman.

Some students were delayed coming back to the campus over the week end due to bad weather. A few of them were Ebel Allen, Bud Runyan and Kathy Eide.

Seems we have some camera bugs on the campus, especially with the snowy weather. The Saga would appreciate having some of these snaps.

The week's activities can best be summed up by:  
 School bells ringing, and you listening,  
 On the campus, snow is glistening  
 In this wonderful weather—we've all had together  
 Walking through the Late Winterland.

## Variety of Fads and Fashions Hanging on PLC "Clothes Line"

Styles march on! 'Tis true that with each passing season new fads are brought out in our wearing apparel. Here on the PLC campus we find a few "musts" in every coed's wardrobe.  
 Neck scarves in all shades and designs are worn with sweaters and blouses. A variety of these scarves can be seen worn by Jane Emerson, Shirley Plets, Carol Knutson, and Mary Olson.

Another accessory "must" is velvet and felt flowers of every kind and color. Marianne Pfeiffer, Ardis Floren, and Donna Lou Erickson have an assortment of these flowers—Clever belts are worn by Mona Sundvik, Peggy Holbrook, and Janet Klippen.

Wool-jersey blouses, if not actually replacing them, are running sweaters a close second in popularity. Marion Cummings, Mary Larson and Judy Larson are some of the girls who team the colored blouses with their skirts, jumpers and suits.

In "Sunday garb" we find some very stylish hats worn by PLC ladies. Karen Hille has a quaint pillbox hat whereas velveteen clashes are worn by Joan Engstrom, Cordy Proctor, and Bev Enger.

All sorts of dress shoes are seen with the coed's Sunday best. Cute heels are worn by Line Drivstuen, Amy Knutson, and Charlotte LaQua.

On the masculine side of the campus we see or hear boots. It seems they are a "must" with the fellows. Displaying a variety in leather campus boots are John Rydgren, Howie Schull, and Kenny Dangs.

Girls wear them, too. Joan Gardner wears a pair of green "pie" boots, with plaid lining, and Darlene Waldron has gray "stormy weather"

boots, for-foed.  
 With all these various styles and fads we seem to come to one conclusion; namely, that PLC has a very nicely dressed student body!

## Here and There On Lute Campus

**RING ON HER FINGER**  
 Harriet Olson cleverly announced her engagement to Howard Shell last Tuesday evening by having her dormitory friends play the game "Truth or Dare." When Harriet was dared to produce something of interest in her pocket, she nonchalantly pulled out her engagement ring. Harriet is a sophomore and Howard is a senior. No wedding date has been announced.

**DR. HAUGE FALLS**  
 While on his way to chapel last Tuesday morning, Dr. Hauge slipped on the icy hill behind Science hall and injured his hip. Although no bones were broken, Dr. Hauge is recuperating from a painful wrench and internal bleeding in the hip muscle.

**HONOR ROLL ADDITION**  
 Due to an error on the part of the Mooring Mast staff, Richard Haglund's name was left off the honor roll last week. We're sorry to have overlooked you, Dick.

**IT'S A GIRL**  
 A baby girl, Robin Jan, was born to Billie and Jerry Eng (50) last Saturday, March 3, at Tacoma General hospital. The proud father is a teacher at CConnell, Wash.

## "Classy" Fied Ads

**FOR SALE**—Slightly used tanned ski cap. See Dave Nesvig.

**WANTED**—Gold polish for the newly acquired speech trophies. Contact Mr. Karl or Mr. Utringer.

**SITUATIONS WANTED**—Capable person to fix broken windows. Apply Old Main.

**WANTED**—Good attendance at Viking club mixer Saturday night.

**LOST**—One bridal bouquet to Louella Vig at former PLC student's, Marion Bloom, wedding.

## WINTHROP MEN'S SHOP

784 Broadway MA. 6635

**SPECIAL!!**  
 Try Our Thick, Creamy MILKSHAKES  
**McCAY'S ICE CREAMERY**

Order Personalized Christmas Cards Now!  
**C. Fred Christensen STATIONER**  
 913 Pacific Ave. BR. 4629 Tacoma, Wash.

## LaCrosse Printers

Cards  
 Posters  
 Announcements

LOCATED IN OLD CHAPEL BLDG. ON THE CAMPUS

Printers of Your Mooring Mast

## Shirlyanne Sandin

See POP for Two Bags of Pop's Pop Corn  
**Pop's Pop Corn**  
 FREE — That's Right — FREE

## Neal E. Thorsen

TRICKS - JOKES - MAGIC  
 Costumes - Tuxedos - Serpentine  
 926 1/2 Broadway MA. 4851

## DANIELS HARDWARE

ON THE HIGHWAY CORNER  
 PACIFIC AVE. & GARFIELD



**PIPER FUNERAL HOME**  
 phone Hillside 8479  
 5436 So. Puget Sound Ave.

Got a date? Want to go to the game?  
 But the car won't work? . . . See

## LEWIS RICHFIELD SERVICE

GARFIELD AND PACIFIC

GR. 8688

Patronize Your Advertisers

**Brookdale Lumber Company**

Brookdale GR. 8669

## PUGET SOUND NATIONAL BANK OF TACOMA

SERVING TACOMA SINCE 1890





# GLAD TIDINGS

By DAVE NESVIG

## JUST PROGNOSTIC

With the Evergreen Conference play completed and the Lutes on their way to Kansas City, the time arrives for the selection of an All-Conference hoop quintet.

Since there are so many good ball players in the league this season, it is really hard to pick a first five. It would be much simpler to make up a team with seven or eight ball players who I thought the best. But, I don't want to be known as a non-conformist, so I'll string along with the old standard of having five men on a squad. With no further rambling, here are my choices for the 1950-51 All-Conference team:

### FIRST TEAM

Name	School	Pos.	Yr.	Hgt
Dick Eicher, Eastern...		F	Sr	6-5
Ralph Polson, Whit...		C	Jr	6-7
G. Lundgaard, PLC...		F	Sr	6-3
Bert Wells, PLC...		G	Jr	5-9
Hal Jones, Central...		G	Sr	6-4

### SECOND TEAM

Name	School	Pos.	Yr.	Hgt
Dean Roffler, East...		G	Soph	6-0
Dean Dion, Martin's...		F	Sr	6-3
Rod Gibbs, CPS...		C	Sr	5-7
Jake Mayberry, CPS...		G		6-0
Jim Doherty, Whit...		F	Soph	6-3

### HONORABLE MENTION

Stan Peterson, Western; Duane Berenson, PLC; Jim Philips, UBC; and Darwin Gilchrist, CPS.

### MORE FACTS AND FIGURES

The PLC eagles have had more than their share of national honors this year.

They will represent Washington in the N.A.I.B. next week, which is a real accomplishment and distinction.

When the official basketball statistics were issued on March for small colleges by the National Collegiate Athletic Bureau, the name Pacific Lutheran appeared several times. The N.C.A.B. is the official service bureau for the N.C.A.A.

Several other Evergreen quintets and Seattle University ranked also.

In the free throw percentage de-

partment, the Lutes made 444 out of 674 attempts for a 65.9 average to place them thirteenth. The Seattle U. Chieftains were ranked two notches ahead of PLC, with a 66.1 percentage. Leading the nation in that department is Eastern Illinois State, which has potted 70.4 percent of their gratis tosses.

Defensively, the Glads ranked tenth in the United States. They yielded an average of 51.9 points per contest to their opponents in 29 games. Two other Evergreen teams placed above PLC in this division. The Eastern Washington Savages held their opposition to 50.5 tallies per game to place them fifth. St. Martin's holds the best defensive record among small colleges, with a 47 point average in 24 tilts.

Two other departments found the same of Seattle University listed. In team offense and field goal percentage, the Chiefs were the only Northwest five to place.

They were ranked ninth in offense, averaging 76.4 counters in 34 games. Eastern Illinois State also topped this group, scoring 84.7 points per fracas.

The Chiefs are usually considered very good shots, as is borne out by their position in field goal percentage. Their 43.6 percent rates them second behind Beloit College of Wisconsin. Top average was 44.3.

Gene Lundgaard, Lute captain, added another honor to his list, that of being 29th in scoring among the hundreds of small college basketball players in the United States. "Goober" broke Harry McLaughlin's single season scoring total of 502 by six tallies for a 18.1 per game average. He also broke Gene Burke's conference record total for one season.

Elongated Ralph Polson of Whitworth placed 43rd with a 17.3 average in 28 games.

Jumping Johnny O'Brien, Seattle U. ace, dumped in 688 points in 34 tilts for a 20.2 average and 18th place.

Stegall of Millikin College topped all point-getters with a phenomenal 29.3 average. He dropped through 674 in 23 games.

## Mail Postcards!

If you want to hear broadcasts of the Glad Tidings basketball games, send a penny postcard immediately to Bob Robertson, Station KMO, Tacoma, Wash. The K. MO sponsors expect at least 1,000 responses before they will consider broadcasting the games, so mail those postcards now! It only costs a penny to back the team!

## Track Only Spring Sport

The Evergreen Conference has decided to drop baseball, golf and tennis from its spring sports program. Track, however, will be retained. This decision to curtail the program was reached last week at a meeting of college presidents and athletic directors of the member institutions at CPS.

The action taken will not prohibit the individual schools from fielding baseball, golf and tennis teams, but the conference will conduct no formal competition in those sports and will officially crown only a track champion.

Reduced enrollment, with a resulting loss in student body fees, has left all the private schools in the conference—PLC, CPS, St. Martin's and Whitworth—in such financial condition that the outlay necessary to retain the full spring sports program was considered unwise.

The state colleges and University of British Columbia were nowhere near so reluctant to undertake the complete spring program.

Also involved in the discussion was a manpower shortage, with several of the schools reporting the loss of 100 to 200 men to the armed forces. PLC was fortunate to lose a considerably lower number.

The advisability of attempting to go through with the 1951 football schedule also came up for discussion, although no formal action was taken. The matter will again come before the conference at its annual spring meeting, scheduled for May 18.

## Saga Lists Picture For March 19, 20

The Saga picture schedule for March 19 and 20 is as follows:

- March 19
- 4:00 p.m.—Student Handbooks, Saga office.
- 4:30 p.m.—Chorus picture, S.U.B.
- March 20
- 4:00 p.m.—Freshman class pictures, Saga office.
- 4:15 p.m.—Sophomore class officers, Saga office.
- 4:30 p.m.—Junior class officers, Saga office.
- 4:45 p.m.—Senior class officers, Saga office.

## Mrs. Frisbie's BAKERY

For Good Bakery Products  
710 So. 38th St. GA. 7591

## Fisher's Tacoma

11th and Broadway  
BR. 4242

## Season Hoop Statistics

	G	FG	Free Throws			Pen. Fouls		Points	
			Att.	M.	Pct.	No.	Fouls	No.	Ave.
G. Lundgaard, PLC	28	153	262	202	77.1	104	6	308	10.9
D. Berenson, PLC	28	105	169	118	69.8	88	6	250	8.9
Bert Wells, PLC	27	96	92	51	55.4	102	7	231	8.5
G. Hoffman, PLC	28	78	65	44	67.0	92	7	198	7.0
L. Harty, PLC	28	55	76	46	60.5	119	15	156	5.5
I. Amundson, PLC	24	38	27	11	40.7	56	2	67	2.8
F. Brown, PLC	26	18	13	59.1	30	1	49	1.9	
Robert Ross, PLC	21	14	12	7	50.0	34	1	35	1.6
L. Eastman, PLC	17	8	22	12	54.5	21	1	28	1.6
G. Lund, PLC	17	10	6	1	16.6	22	0	21	1.2
K. Billings, PLC	17	6	3	1	33.3	11	0	13	0.8
D. Kowalsky, PLC	9	1	1	1	100.0	0	0	5	0.5
L. Bloom, PLC	3	2	2	2	100.0	1	0	6	2.0
R. Edwards, PLC	3	2	3	1	33.3	5	0	5	1.6
H. Berggren, PLC	1	1	2	1	50.0	9	0	3	3.0
R. Larson, PLC	1	0	2	2	100.0	1	0	2	2.0
Team Totals	28	370	574	444	77.1	604	46	1584	56.5
Opponents' Totals	28	495	774	462	59.6	614	39	1452	51.8

## Lutes Begin Tourney Play On Monday; 12 Make Trip

(Continued from page 1)

the hearts of Lute players momentarily as he cast off just as the gun sounded. The ball rolled around the hoop and crept out, much to the despair of the Loggers.

### Slow Start

Neither team scored in the first three minutes, but Gerry Hefty broke the ice with a free throw. PLC went ahead at 3-0, but after Darwin Gilchrist tied the count at 5-5 it remained so-taw the rest of the half. Halftime score read, PLC 25, CPS 23.

John Heinrich's boys forged ahead soon after the start of the second period and stayed ahead until the last minute of play, when the Glads went ahead 50-49. Then Gary Heney, speedy guard, stole the ball from Lee Amundson and went all the way for a lay-in to go ahead, 51-50.

Then came Goober's shot in the clutch for PLC's fifth win over the Loggers this season and their ninth straight win.

### Brown Stars

Although Gene was high scorer

with 14 points, all coming in the second stanza, it was diminutive guard Ed Brown who caused the most trouble for the Loggers. Time and again



## Coach Harshman

he would drive past Darwin Gilchrist for lay-ins and banked the ball on defense.

He dropped through nine important tallies to share second honors with "Tiger" Amundson. Lee also worked in a top-flight performance.

### PLC 48, Whitworth 44

In the first night affair, the lefty and cocky Whitworth Pirates tested the pants of defeat, 48-44.

Head mentor Harshman came up with a zone defense that led the Whits baffled and Ray Green also victimized them.

Ray played probably the best ball of his college days, although he fouled out early in the second half. He checked big Ralph Polson, probably scener for the Pirates, down to four points in the first period and controlled his himself.

Gerry Hefty played terrific basketball, too, leading the PLC point-getters with 16. He also was effective in controlling the backboards.

## VA Sets Deadline For Closing Accounts

The Veterans Administration has ordered all bookstore accounts closed by April 1, according to A. S. Mykhalow, bookstore manager.

No supplies or books can be purchased under the veteran's accounts after that date. Therefore, veterans are urged to estimate their needs for April and May and provide for them before April 1.

Accounts for the summer session will be open again at the time of registration.

FOR ALL YOUR CLEANING AND LAUNDRY NEEDS

## Centre Cleaners

Parkland Centre Parkland

## Stop at . . . VERN'S

For A

## Whamburger!

Over-sized Hamburger with Mayonnaise, Lettuce, Pickle, Onion and our SPECIAL RELISH

Old English Fish and Chips  
Home-made Pie and Cake

NINTH & PACIFIC

## PARKLAND AUTO PARTS

IN CONNECTION WITH

## Parkland Fuel Oil & Service Station

GRanite 3112

Parkland, Wash.

## PARKLAND XXX

MERCHANTS LUNCH—55c

Full Course Dinner—11 to 9

— COMPLETE FOUNTAIN SERVICE —

PARKLAND

TWO BLOCKS NORTH ON MT. HIGHWAY

WE WILL BE PLEASED TO SERVE YOU —

Groceries .. Meats .. Vegetables  
Frozen Foods

## FLETCHER'S MARKET

FREE DELIVERY

GRanite 8550



# Savings, Relaxation: Benefits Of Pflueger's Many Hobbies

Hobbies have made life interesting and happy for Dr. J. P. Pflueger, professor of philosophy and religion at PLC. "My hobbies have not only enriched my life," says Dr. Pflueger, now in his 22nd year at PLC, "but they have also afforded me much relaxation and saved me hundreds of dollars through the years."

## Clock Display Aids Students In Library

A display, giving the appearance of a clock, has been put up in the library to give visual aid to students looking for reading material.

Miss Gertrude Tingstad, assistant librarian, has placed on the face of the "clock," covers, instead of numbers, giving the titles of 12 books, and the "minute and hour hands" upon which are written the words, "Time to Read."

Also, in the glass display case, under the "clock" are a representative group of a number of other books, which were recently catalogued by the library staff.

## Sacrament Of Altar Will Be LSA Topic

The Sacrament of the Altar will be the topic for discussion at the LSA's meeting at 6:30 p.m. Sunday evening in the SUB.

Dr. Magnus Nodtvedt will present a short talk and answer questions brought up by students.

Viewpoints of three conceptions or ideas of the Sacrament as taken by the Lutherans, the Catholics, and the Reform group, i.e., theories of Calvin and Zwingli will be presented in topics by Everett Savage, Luther Kroenk, and Al Gerstmann.

## Dorm Girls To Make Home-made Fudge For LSA Candy Sale

Buy, buy your girl some home-made fudge and she'll think you're real sweet!

The LSA is sponsoring a fudge sale in the hall of Old Main next Wednesday. It will be almost home-made, more girls of the dorm are being solicited to make it.

Arlene Wangunstein and Ordelle Lee are in charge of the business ventures.

"A word to the wise is sufficient." Just a repetition of the few short reminders from student chapel day. Remember the no parking signs, the fire hydrants, and guarding those precious blades of emerald grass, before the college board starts putting up "no trespassing" signs.

Patronize Your Advertisers

WEDDINGS - CORSAGES  
FUNERALS  
**Stella's Flowers**  
Artistry in Flowers  
Parkland Center GR. 7863

## STUDENTS!

Bring Your  
RADIO AND APPLIANCE  
Troubles to Us!

SALES & SERVICE

**Rogers Radio-TV**

Parkland Center Building

MEAT SALES AND  
PROCESSING FOR STORAGE

## PARKLAND LOCKERS

A. J. (Slim) STERN

11012 Pacific Ave. GR. 7111

## \*Survey of College Charges in Pacific Northwest on An Annual Basis for 1950-51

Pacific Lutheran	\$350	\$20	\$113	\$237	\$25.00	\$ 742.00
Whitworth	300	30	420 (rm.&bd.)	22.50		772.50
Col. Puget Sound	150	20	230	200		700.00
Liafield	390					924.00
Lewis & Clark	450					862.00
Whitman	350					875.00
Pacific Univ.	450					970.00
Reed	500					1,000.00

\* Compiled by Gerard Banks, Bursar at College of Puget Sound. Please notice that Pacific Lutheran College offers an education at the lowest cost among private colleges in Oregon and Washington during the school year 1950-1951. It is expected that some extra charges will be made in all colleges for next year, including Pacific Lutheran College.

## Debate Squad Attends St. Martin's Tourney

Continued from Page One

promptly and extemp; John Osburn in debate, impromptu and extemp; and Alan Hatlin in debate, discussion and impromptu.

Also entering in individual events will be Edith Engel in impromptu and inter; Joyce Geaz in impromptu and extemp; Janet Clippen in impromptu and extemp; Helen Jensen in oratory and inter; Lola Mark in impromptu and extemp; and Phillip Mirie in impromptu.

The team members for the National Pi Kappa Delta tournament to be held on the Oklahoma A. & M. college campus at Stillwater, Oklahoma, March 25 through 29, have been selected. Those attending, if the budget provides for it, will be Mary Larson in extemp and discussion; Bill Rieck in extemp; and Jon Ericson in oratory and one-man debate. Mr. Karl will be a member of the tournament committee.

There will be no senior or junior divisions and students attending must be active members of the Pi Kappa Delta society. Only the top speakers in the nation will be attending the contest and Mr. Karl has stated "it is a great honor to attend such a tournament."

Two days before the national tourney the group and Mr. Karl will attend the Southwest Invitational contest at Durant, Oklahoma.

## Three Campus Clubs To Meet Wednesday

Three clubs have scheduled business meetings for next Wednesday. The Camera club will meet at 6:30 p.m. in S-110. The Science club will meet at 7:30 p.m. in S-108, and Alpha Sigma Lambda will meet at 7 p.m. in the Class building.

## Lute Chatter

By the Editor

This week while the campus is transformed into a winter wonderland of glistening white, your editor is basking in the glorious southern sunshine of California. Of course this is in between the Chair of the West concert. However, by way of the grapevine we have heard that the trip is shaping into quite a success. Praise and recognition should be given these ambassadors in song.

Speaking of concert tours—Prof. Gunnar Malmin, it seems, was overheard telling his wife that if he could he would entitle the recent chorus trip. "Our Hearts Were Young and Gay." It also seems that Conductor Malmin left his autograph several times in the woodwork of Raymond High School while signing his numerous youthful fans after a concert.

"Nice weather we're having"—During the past few days Old Man Winter has certainly stretched his finger tips to every part of the campus. And with snowy flakes have come snow balls and broken windows. Some of the dorm girls have been raised from sleep the past few mornings with icy puffs of snow piled on their beds. Shall we aim at the bricks and not at the windows from now on?

I've been hearing moans and groans from various members of the student body lately. For some reason or other the professors have had quite a run on testing. But cheer up, Lutes, mid-semester are just around the corner. Yes, the future looks brighter every day.

Take Note: If you have any news that seems to be valuable—don't forget to tell your nearest reporter. We can't offer any fabulous reward, but news is what keeps our presses rolling.

Meet Your Friends at...

## ALVSTAD'S MARKET

GROCERIES — MEATS — VEGETABLES  
FROZEN FOODS

Garfield Street

Parkland

LET'S ALL MEET AT

## Busch's Drive-In

FOR THOSE DELICIOUS

## HAMBURGERS AND THICK MALTS

FAVORITE MEETING SPOT

OF ALL STUDENTS

OPEN UNTIL 3:00 A.M. ON SATURDAY AND SUNDAY

3505 South Tacoma Way

# 4 Girls Will Attend Nat'l A.C.E.I. Meet

Four PLC students are planning to attend the 1951 Study Conference of the Association for Childhood Education International at the Olympic Hotel in Seattle, March 26-30.

Joining an expected 2,000 students and faculty members from colleges and universities throughout the U. S. and several foreign countries will be Marjorie Anderson, senior from Tacoma; Amy Brown, senior from Spanaway; Evelyn Mikkelsen, junior from Bothell; and Sally Whitley, senior from Orting.

Faculty members from the department of education will be represented by Miss Anna Mara Nielsen, director of teacher training, who will assist in study groups, and Miss Ruth Michaelson, professor of primary education, who will spend the entire week at the conference.

ACEI has chosen for its 1951 conference theme "Living With Children in Today's World." Study areas have been organized to discuss specific aspects of this theme. Nationally recognized educational leaders are to be speakers and lecturers spearheading these groups.

Additional information may be obtained from Miss Nielsen or Miss Michaelson.





- ★ COLLEGE OF PUGET SOUND
- ★ PACIFIC LUTHERAN COLLEGE
- ★ STAMEN HIGH
- ★ LINCOLN HIGH
- ★ SHAWNEE HIGH
- ★ PYRALIS HIGH
- ★ VISITATION VILLA
- ★ FEDERAL WAY HIGH
- ★ CLOVER PARK HIGH
- ★ ST. LEON'S HIGH
- ★ ST. MARTIN'S COLLEGE

Every Wednesday  
During School Year  
**6:30 P. M.**  
**KMO** 1360 on  
Your Dial  
Rebroadcast K101  
8:30 A. M. Saturday  
Sponsored by  
**TACOMA CITY LIGHT**