

New Songleaders Chosen

The Mooring Mast



VOLUME 33, NUMBER 2

PUBLISHED BY THE STUDENTS OF PACIFIC LUTHERAN COLLEGE

FRIDAY, SEPTEMBER 30, 1955

Dr. Burgess To Speak for Mission Week

Special speaker for the annual Mission Emphasis Week, October 9-12, will be Dr. Andrew S. Burgess, professor of missions at Luther Theological Seminary, St. Paul, Minnesota.

Having served as a missionary in China for two years and in Madagascar for nine, he comes to us with a rich background of unique personal experiences. He has served as both field representative for foreign missions (E.L.C.), and director of missionary education. Since that time he has travelled extensively on foreign fields and has written six books on mission activity.

Dr. Burgess will open the Mission Emphasis Week with the Sunday services of the student congregation. He will hold two services on Monday, Tuesday, and Wednesday—chapel service, including Tuesday, and a 7 p.m. service.

A.P.O. Skating 9:30 Tonight

Come one! Come all! To the A.P.O. sponsored "All School Skating Party," to be held this evening beginning at 9:30 p.m. and lasting until 12:00 p.m., at the Tacoma Roller Bowl on Highway 99 at 7455 South Tacoma Way.

Tickets can still be purchased in the hall of Old Main. The price is fifty cents per person.

The members of the Alpha Phi Omega urge everyone to attend and have a good time!

Kappa Rho Kappa To Meet at Lutnes Home

Tonight Kappa Rho Kappa, an organization of students interested in Greek, will hold its first meeting of the school year. The meeting, to be held in Pastor Lutnes's home, will be in the form of a hamburger fry, and the purpose is to acquaint all new members. The party is scheduled to begin at 7:30, but will be over in time for all to attend the All-School Skating Party.

Senior Class To Hold Picnic Sat.

Co-chairmen, Marlene Stuhmiller and Elwood Rieke, announce the senior class picnic, Saturday, October 1st. The students will leave the college at 1 o'clock for Lake Wilderness and will return in time for the game Saturday evening. Richie Heins is chairman of transportation. Gordy Strom is in charge of arrangements, and Sharon Kinser is chairman of the food committee. A small fee of 35 cents per person is asked and lots of food and recreation is promised.



Pictured above are the cheerleaders and the candidates for songleaders for this year. The songleaders were selected last night from among this group. They are, left to right: Back row, Willamae Anderson, Bette MacDonald, Jane Wolk, Carol Bottemiller, Sylvia Kirkebo, Patti Finn, Mo Swanson, Dee Deua. Third row,

Lois Gundersen, Barbara Johnson, Dianne Glaser, Jan Bondurant, Marlene Karev, Colleen Hanlin. Second row, Terry Brown, cheerleader, Dana Blount, cheerleader, Rita Berg, cheerleader, Dave Jacob, cheerleader, and Nita Klahr. Front row, Marianne Christensen, Corky Hautala, Betty Toepke, Pat Ahrens, and June Sather. Not pictured, Norma Knutzen.

Songleaders Chosen Last Night for '55

With the sound the "PLC Fight Song," "On, You Lutherans" and "Hoorah for Lutherans" ringing in their ears last night, the judges finally came to a conclusion—we should have twenty-three songleaders. Due to the impracticality of this course of action, five songleaders were chosen to represent PLC for the 1955-56 season.

They are Carol Bottemiller and Jane Wolk, juniors; Colleen Hanlin, sophomore; Wila Anderson and Diane Glazer, frosh.

The judges were Miss Ruth Moe, Mr. T. O. H. Karl, and Mr. G. O. Gilbertson from the faculty. Student judges were Dick Barnwell, chairman of the selection; Steve Brandt, Delphine Danielson, Arlene Baker, Sylvia Johnson, and Marjell Soland. The girls were ably assisted by a four-piece pep band composed of Lind Karlson, Dave Knutson, Gerry Bayne, and Norm Fless.

cludes only one returnee—Jane the position here at PLC.

They have a difficult task ahead of them, but one which they will all enjoy. Theirs is the responsibility of keeping spirits up with their snappy routines and smiling faces. No matter what happens during a game, they will perform their duties and try to inspire the whole student body with their spirit.

During football games you will see them sloshing around in the mud just like the players, but a little lighter on their feet. Our busy basketball schedule will keep them jumping... for joy, we hope.

Their debut will be at Homecoming, only two weeks away. Until then they will spend many long hours learning, practicing and improving their song patterns. Congratulations—Carol, Jane, Colleen, Wila, and Diane!

Radio, Drama, Debate Plan Active Year

The speech department, featuring radio, drama, and debate, has scheduled a full season of activities for both experienced and novice students. The department head, Professor Theodore O. H. Karl, invites students to select and participate in the activities of their choice.

RADIO:

Did you know that student radio engineers made over 300 recordings for speech students last week?

The radio department will continue their student produced series of "Joey" in conjunction with the Tacoma Police Department.

Additional programs of a varied nature will be announced. Students interested in radio drama, announcing, script writing, or engineering may contact the radio department.

DRAMA:

The drama honorary, Alpha Psi Omega, will sponsor two one-act plays during Homecoming. Tryouts are open to all interested persons.

The Campus Glee Club plans an evening of dramas and entertainment each month. Anyone interested in experience in these stage presentations is invited to join the club.

Watch for the schedule of tryouts for the all-college play November 2, 3, 4. The speech department is happy for the assistance of Mr. Nordholm, who will be designing the sets and directing stage crews and lighting all major dramas.

FORENSICS:

The first tournament of the season is planned for November 18 and 19 at Washington State College. November 21, 22 and 23 PLC will be host to the Western Speech Association, comprised of the 11 Western

LDR To Hold First Meeting of Year

October 4 is the date set for the first meeting this year of the Lutheran Daughters of the Reformation. This organization emphasizes missionary action and the spiritual life of its members.

According to plans made at a recent cabinet meeting led by President Ellen Henry, refreshments will be served at 4 p.m. in the North Hall lounge by hostesses Mrs. Johnson, Miss Bloomquist and Miss Rouse. The meeting will start at 4:30 with Miss Anne E. Koglund speaking on the aims of the L.D.R. Phyllis Brandt will lead devotions. New girls on campus are especially invited to this meeting.

L.D.R. officers are Ellen Henry, president; June Wigdahl, vice-president; Liz Omli, secretary; Bonnie Troedsoh, treasurer; Dorothy Hickman, L.C.C.; Gerda Nergaard, publicity; Lottie Hefty, worship offering; and Marlene Stuhmiller, hostess.

Dr. Eastvold To Be Guest Speaker in P.A.

Dr. Eastvold will be the guest speaker in Port Angeles, Holy Trinity Lutheran Church on Sunday morning, October 2. The following day he will address the Port Angeles Chamber of Commerce in his role of president of the Association of Non-tax-supported Colleges and Universities of Washington.

On Monday, September 26, President Eastvold addressed the Chamber of Commerce of Chehalis.

States. This is the largest single speech tournament in the United States. You are welcome to join the debate squad which meets each Tuesday and Thursday.

Homecoming Petitions Due October Third

Voting for Homecoming Queen will begin on Tuesday, October 4. The Queen's coronation will open the Homecoming festivities, October 14, 15, 16.

Petitions for queen are now circulating and should be turned in to the co-chairmen, Ellen Henry or Terry Brown, by Monday, October 3. Each petition must have 50 signatures and be accompanied by \$5.00. Only junior and senior girls are eligible to become queen.

With the coronation of the 1955 homecoming queen and her court at 8:00 p.m. on Friday, October 15, the weekend's festivities will be officially underway. Capt. Eugene L. Lughitzi, U.S.N., Commanding Officer of the U. S. Naval Station in Tacoma, will crown the queen.

Committee Chairmen

The chairmen in charge of the coronation are Virginia Grahn and Helen Jordanger. The coronation committee met with the other committee chairmen and advisors to complete the final arrangements for homecoming. The other chairmen are: coffee hour, Joanne Poencet and Esther Erickson; girls' football, Barbara MacDonald and Monique Wetten; parade, Jack Hoover and Carol Bottemiller; registration, Margaret Canis; publicity, Connie Hustad and Jerry Shattum; campus decorations, Dale Schimke and Ross Goetz; stumm banquet, Mariys Solterbeck and Lottie Hefty; half-time entertainment, Anita Schnell and Jane Wolk.

Challenges from CPS
SEE BACK PAGE

ACTIVITY SCHEDULE

September 30
KPK picnic, 5:30, Lutnes home.
Faculty Wives, 8:00, South Hall.
APO Skating Party, 9:30-12:00.

October 1
Senior Class Picnic, 1-6, Lake Wilderness.
Junior Class Picnic, 1-6, at Wapato Park.
Soph-Frosh Picnic, 1-6, Spanaway.
Football, UBS, Lincoln Bowl.

October 3
ICC, 7:30, L-104.

October 4
Mu Phi Epsilon, 7:00 p.m., South Hall Lounge.

October 5
Meeting of Off-Campus Men, 6:30, L-109.

October 8
Linn's Outing.
Faculty meeting.
Football, Pacific U, Forest Grove.

The Mooring Mast

Published every Friday during the school year by the students of Pacific Lutheran College
 Office: Student Union Telephone Granite 8611
 Subscription Price—\$3.00 per year



EDITOR.....WALTON BERTON
 MAKE-UP EDITOR.....MAGGIE OLOCKENSPIEL
 FEATURE CO-EDITORS.....AGNES HALLANGER, MIKE GRIFFEN
 SPORTS EDITOR.....FRED MILLER
 BUSINESS MANAGER.....PAUL LUCKY
 AD MANAGER.....DOUG MANDT
 COPY STAFF.....JIM BROOKS, COLLEEN THERIAULT, JIM GIES
 REPORTERS.....Betty Lou Broniec, Carol Buschke, Sylvia Fong, Joyce Hansen, Gayle Henriksen, Darrel Hines, Dave Jaech, Stu Morton, Lois Peterson, and Bey Sveningsen.

Editorial

"We of CPS think very highly of PLC... the school spirit, athletic squads, and student government." So spoke Chuck Arnold, SBP of CPS. With this thought in mind, plus what Dave Wold, our SBP, said yesterday morning at their convocation, it is only fitting that the students of both schools join in a cooperative effort toward an "exchange of positive ideas."

The childish vandalism which has resulted from the "spirit" of both schools has been both shameful and embarrassing, not to say expensive. It is a black mark against both schools that this is the only way they can show their allegiance.

There is a movement underway to have an exchange of talent and entertainment. Plans are already being made to have competition between the championship intramural teams.

CPS and PLC are both liberal arts colleges, private institutions, and of approximately the same size. It is only logical that combining our efforts in a spirit of true cooperation will double our potentiality.

Travel, Study Attract Profs

Many of the scenic and historic places over the sea became a source of much enjoyment for Miss Knudson, Miss Blomquist, Mr. Newham, Dr. Plueger, and Mr. Akre, as these members of our faculty traveled abroad.

Miss Bloomquist, of the English Department, has spent the 1954-55 academic year as Girls' Counselor in Dependent American High School in Frankfurt, Germany. A co-educational institution of 350 students, it serves children of American service and diplomatic personnel. On several short trips she saw Pope Pius XII on Easter Sunday in Rome, Queen Elizabeth in state robes in preparation to dub two Knights of the Thistle, the Grand Duchess of

Luxembourg celebrating her birthday, and Queen Juliana of Holland driving with Halle Selasie, emperon, of Ethiopia. She witnessed the Volks Polizers (The People's Police) placing wreaths in the Soviet Garden of Remembrance in East Germany.

She observed the official withdrawal of American occupation with the signing of the Armistice this Spring. She noted the buildings and lands formerly used by the U. S. Government turned over to the Germans. She especially noticed the concern of the "pleasant, hard working Germans" over unification of the country. In the churches, offerings are taken for the "brothers" (Continued on Page Four)

Orchids and Onions . . .

By Stu Morton

When our school year opens up with this host of activities and events, it is important that we take a look at them and see just how they can affect our school life. There are such a battery of activities here on this campus, that if one were to take part in each activity he would have little time for studying, which is the main reason for attending college, and hence, he would soon be seen no longer. Well, the reason for the activities is not to force people out of school, but to give entertainment for them while they are in school.

We can't be caught in this rush of "doing," for it would prove quite disastrous in a few short weeks. So, in order to make the most of these activities, we should pick those we are most interested in and take an active part in that activity. We can't go to every meeting of all the organizations, but we should be able to be counted on in the few organizations we are in.

In light of these few remarks:

Let's give onions to those who take no part in school activities.

Orchids go to the hard-workers of all the school organizations.

Football is a grueling sport, which takes much practice and pain. We don't realize the many hours of practice that takes place before the game; so:

We give an onion to the ones who stay home, and

Orchids to the game-goers.

Bravery is a virtue;

Orchids to those who have read the column this far.

Onions to the man who complains about life, and does nothing about it!!

Something to Say

By Mike Griffen

Upon a careful look at the year before us it is evident, to anyone who cares to express an opinion and thus qualify as an unqualified expert, that malnutrition and boredom are not likely to be such a problem as they have been in other places or other times. Some people say this, some say that, and occasionally we even hear someone say "Thank you" nowadays, but probably the best cure for both is crackers and cheese, and a good book—as we shall see.

Boredom, in small doses taken daily after dinner, may not be so terrible or indicative of a decadent (dek'a-dent) state of mind as we are led to believe: Horatio played bridge and Julius Caesar, evidently a consistent winner (Remember "Venl, vidi, vici" . . . I came, I saw, I collected?"). Also found a remedy for boredom in a little fast shuffling. Comparatively lately the individual has taken these signs of boredom for indications of poetic inspiration, and we get

Fat Lost Ambling
 nowhere through
 the upper town they kick
 their way through
 heaps of
 fallen maple leaves
 still green . . . and
 crisp as dollar bills
 Nothing to do. Hot cha!

Which fragment of a poem by William Carlos Williams may or may not come under the second part of our cure. Which all goes to show that being bored can be an incentive to a search for the truth in great minds.

However, it is doubtful that such a stark, uncompromising thing as a Royal Flush has not been drained of any promise by Sir Arthur Conan Doyle's learned study in comparative logic; and it seems rather unlikely that a Searching Shaft of the Light of Truth should be found in a theater where most cannot efficiently locate the Mouth to Put Popcorn in, or ladies may come home crying in a stranger's handkerchief.

So, while Mr. Magoo is light enough to raise above the most sodden gloom, and Six-gun Showdown will no doubt alleviate your boredom might we suggest that maybe the old-guard, like Chaucer, Shakespeare, Goethe, Dostoyevsky, and Yeats have something to say to you.

Plays To Be Held On October 15th

On Saturday, October 15, during Homecoming week-end, two plays will be presented in the CMS at 8:00. The first will be a drama entitled "The Rope," directed by Diane Bassett. The cast for this has not yet been chosen. The play, written by Eugene O'Neill, has an unusual plot with a thrilling surprise ending. The second play is "Mrs. O'Leary's Cow." This will be directed by Dick Brown and the cast will include Mardel Soland as Betsy; Mary Alice Drexel, Mrs. O'Leary; Teddy Gulhaugen, Mrs. Dornhee; Barbara Johnson, Ilene; Twila Gillis, Lida; Gene Bern, Emmett; Bob Triolo, P. D. Farman.

Permanents That Satisfy
 Hair Coloring Consultation
CHARM Beauty Salon
 Blanche Lingbloom
 413 Garfield St. GR. 7475

Ludtke, Minnesota Grad, and Moe, PLC '53 Grad, Join 1955-56 Faculty



Frederick Ludtke

Frederick E. Ludtke is one of the new faculty members of PLC, where he teaches industrial arts.

He received his bachelor of science degree in 1953 and two years later his master of science degree in education, from Winona State Teachers College, Minnesota.

Mr. Ludtke enjoys fishing and hunting in his spare time.

When asked how he likes PLC he sincerely replied, "It is a great experience to be a member of this wonderful Christian college."

Miss Ruth Moe

Miss Ruth Moe, girls' Physical Education teacher, is a native Tacoma. She graduated from Stadium High School before entering Pacific Lutheran College where she re-



Miss Ruth Moe

ceived her degree with the class of 1953. During her college days Miss Moe was active in the "Spurs," the "Choir of the West," and Delta Rho Gamma. Later she taught at Centralia High School and Junior College, and Mason Junior High School before coming to our faculty.

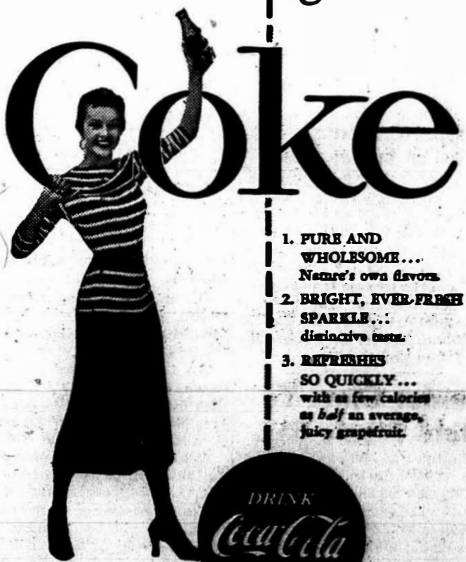
Aside from her "girls," Miss Moe enjoys swimming and sewing. Last summer she traveled through San Francisco, Los Angeles, and Mexico.

DONUT BAR

Visit Our HOBNOB Room
 Dinners — Short Orders
The Best in Donuts
 Open from 7:30 to 8:00

50 million
 times a day
 at home, at work
 or on the way

There's nothing like a



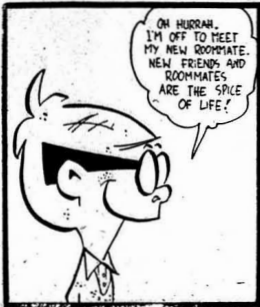
1. PURE AND WHOLESOME... Nature's own flavor.
2. BRIGHT, EVER-FRESH SPARKLE... distinctive taste.
3. REFRESHES SO QUICKLY... with as few calories as half an average, juicy grapefruit.



BOTTLED UNDER AUTHORITY OF THE COCA-COLA COMPANY BY COCA-COLA BOTTLING CO., INC., TACOMA, WASH.
 "Coke" is a registered trade-mark. © 1955, THE COCA-COLA COMPANY

STELLA'S FLOWERS
 Flowers for All Occasions
 12173 Pacific Ave. GR. 7463
 (Foot of Garfield) We Deliver

Laurinat's Apparel
 "WE FEATURE THE FINEST"
 Zelma Laurinat
 409 Garfield St. Granite 5317
 Parkland, Wash.



"Sport-Light"

By Freddy Miller

Looking back at the last week's game is not always the proper thing in football, but last Saturday afternoon's game with College of Puget Sound shouldn't pass without comment. The Lutes were short on the scoreboard, but came through on top of the statistic column. A word of praise is in order for the sophomore nucleus of an "Ironman" backfield, Tommy Glimmer.

Now to look ahead to tomorrow night's game. The Gladiators meet the University of British Columbia Thunderbirds in their vergreen Conference debut at 8:00 p.m. at Lincoln Bowl. In last year's meeting the Lutes edged out the Canadians by a close 6-0 score. The Thunderbirds haven't won a game this side of the border for many a year and it is not expected that they will do too much damage on tomorrow's invasion. We'll pick the Gladiators by two touchdowns.

PLC came out about even-steven with the teams up from Fort Lewis Tuesday in a scrimmage game. The first string didn't see any action and it was all for the benefit of the second squad.

THIS AND THAT—Will the U. of W. do it again, this time with Oregon State—Maryland's 7-0 win over top-ranked UCLA—Bill Rigney new pilot of the New York Giants—Cheney Studs second best amateur baseball team in U. S.—Lynn Calkins sidelined with a heart disorder—Willie Mays smacked his 51st home run—Freddie Hutchinson named the PCL manager of the year—And Dave Jaech gave up falling off stage—the freshman and sophomore girls warming up for the Homecoming Powder Puff game—Eastern over Western last week, 6-0 activities is not to force people out of school, but to give entertainment but this will be subject to change at that time. Whitworth, CPS, PLC, Eastern, Central, Western, U.B.C.

CPS Downs Lutes, 14-12

College of Puget Sound Loggers defeated the Pacific Lutheran Gladiators by a score of 14 to 12, Saturday, September 24. The game, first of the season for both schools, was played on the Loggers' home field.

The Loggers reached pay dirt first. After being "stopped" on the Lutes' two-yard line and giving up the ball on downs, Wally Johnson recovered a PLC fumble on the 14-yard marker. CPS then proceeded to score with Rich Dodds going the last two yards for the touchdown. Don Parsons converted to make the score 7-0 in favor of the Loggers.

Late in the second quarter the Gladiators started to move on Tommy Glimmer's passing, but time ran out before they could score.

Glimmer took the opening kickoff of the second half and returned it to the PLC 37 yard line. John Fromm, Galen Nusbbaum, and Jack Newhart then combined talents to carry the ball to the CPS 3-yard line, from which Glimmer scored on a run. The conversion failed when Glimmer made an unsuccessful dropkick.

Early in the fourth quarter CPS drove to the Lutheran's two-yard line where Dodds once again went over for six points. Parsons kicked the point after touchdown to give the Loggers a 14-6 lead.

The Gladiators scored their final T.D. of the day on a 10-yard run by Fromm with three minutes left to play. Glimmer's attempted dropkick was blocked.

The Loggers then received the kickoff from PLC and controlled the ball until the end of the game.

Gary Gale, Ron Storaasli, Tom Glimmer, and John Fromm looked

REMEMBER
to bring your ASPLC card to the UBC game at the Lincoln Bowl tomorrow night. These cards entitle you to free admission at home games only.

good for the Lutes, while Rich Dodds and Don Parsons stood out for CPS.

The game was televised by a Seattle station, KOMO, marking the first time a Pacific Lutheran College game has ever been shown on television.

ART'S SHOE SHOP
Garfield Street
QUALITY
REPAIRING - DYEING

EXPERT DRY CLEANING AND LAUNDRY SERVICE

CENTRE CLEANERS
ONE-DAY SERVICE
Mrs. Jo Summers
Parkland Center GR. 4300

RUTH'S CAFE

Located at IGA Foodtown
112th and Park Ave.

Bar-B-Q Burgers 35c

Short Orders - Dinners
Fountain

Home-made Pies

8:00 a.m. to 11 p.m. Week Days
Sunday: 9:00 a.m. to 10:00 p.m.

Tacoma, Central Barracks and East Parkland Post Wins

The double round-robin intramural touch football tournament got underway beneath cloudskies at 3:40 Monday, September 26, on the baseball field.

In the opener, Tacoma waxed West Parkland, 24-0. Chuck Hobbs, playing for Tacoma, connected with three different receivers for three of the four tallies.

The second game saw North Hall (2) lose a "fight to the finish" to Central Barracks. Denny Ross, Central Barracks, ran for two T.D.'s in helping his team win, 30-20.

Tuesday, North Hall forfeited to Clover Creek and East Parkland played De Jardines. Stu Morton's passing won the game for East Parkland, 24-0.

The eleven intramural districts include: (1) Tacoma, (2) West Parkland, (3) East Parkland, (4) Faculty, (5) Clover Creek, (6) Central Barracks, (7) North Hall (1), (8) North Hall (2), (9) North Hall (3), (10) DeJardines, (11) Ivy Hall.

The districts are divided to include students off campus as well as those living in the dormitories. If you have not participated as yet, get together with your district and join the intramural fun.

PATRONIZE OUR ADVERTISERS

When You Want Books
C. Fred Christensen
Bookseller and Stationer
932 Pacific Ave. BR. 4829
Tacoma, Wash.

Announcing a New Barber Shop

GERRY'S BARBER SHOP

"WE SPECIALIZE IN FLAT-TOPS"

Located in New IGA Foodtown

112TH & PACIFIC AVENUE PHONE GR. 3434

HI-FI PHONOGRAPHS and RECORDS
Magnavox Headquarters
TED BROWN MUSIC
1121-23 Broadway BR. 3211

Clover Creek Texaco Service
Clover Creek TEXACO Service
Friendly, Dependable Service
TIRES AND BATTERIES
SHOP SERVICE

Paragon PRINTERS, Inc.

Fast, Economical Printing and Lithography
A Complete Modern Printing Plant in Tacoma's
Fastest Growing Community

11802 Pacific Avenue Granite 7100

SWEATERS... for guys and gals!!

Washington HARDWARE CO. SPORTS SHOP
917 74th Street

meet **JOE**

Joe's a Senior this year—and come June, after graduation, he'll be starting his career as a Life Insurance Representative with **LUTHERAN BROTHERHOOD**.

How about you? There's a wonderful opportunity waiting for Lutheran college men in this Life Insurance Society for Lutherans.

Write the Home Office soon—we'll give you full particulars.

Lutheran Brotherhood
LIFE INSURANCE FOR LUTHERANS
CARL F. GRANBUO, President
608 Second Ave. South Minneapolis 2, Minn.

EINAR BOTTEN, General Agent 312 N. 85th Street, Seattle, Wash.

TACOMA 44
WASH.

U. S. POSTAGE
Bulk Mailing
PAID
Non-Profit Organization
Permit No. 51

Applications for Fulbright Scholarships Now Taken

American college seniors and graduate students can compete for Fulbright scholarships to study abroad during the 1956-1957 academic year. Opportunities for foreign study in 35 countries are available under the U.S. Government's Fulbright exchange program.

Countries where U. S. graduate students may study under the Fulbright program are Australia, Austria, Belgium and Luxembourg, Burma, Ceylon, Denmark, Finland, France, Germany, Greece, India, Italy, Japan, the Netherlands, New Zealand, Norway, the Philippines, the United Kingdom, and for the first time this year, Chile.

In Burma, Ceylon, India, Japan, the Philippines, and Greece only a limited number of grants are available and mature, graduate candidates are preferred. The grants for Ceylon are partial only and supplement two awards offered by the University of Ceylon.

Countries participating in the Buenos Aires Convention program are: Bolivia, Brazil, Chile, Colombia, Costa Rica, Cuba, the Dominican Republic, Guatemala, Haiti, Honduras, Mexico, Nicaragua, Panama, Paraguay, Peru and Venezuela.

Closing date for application is October 31, 1955. Application blanks and a brochure describing the Fulbright and Buenos Aires Convention programs are available at the office of the Fulbright Adviser on campus.

Eligibility requirements for the Fulbright fellowships are: (1) United States citizenship; (2) a college degree or its equivalent at the time the award is to be taken up; (3) knowledge of the language of the country sufficient to carry on the proposed study; (4) age 35 years or under; and (5) good health.

Final selection of Fulbright grants is made by the Board of Foreign Scholarships. Under the Buenos Aires Convention final selection is made by the cooperating countries. The awards cover transportation, tuition, and maintenance.

Anyone wishing to have articles published in the Mooring Mast must have them in the Mast office by the Tuesday night before desired publication.

Campus Show Features Style, Entertainment

Last Saturday night the PLC campus witnessed something that was completely new, refreshing and highly entertaining — the "Showboat" style show. From the opening model, passing in revue in the cutest pair of pedal pushers, to Spencer Aust's rendition of "Old Man River," the show was a tremendous success.

Not only were we entertained, but educated in the most subtle way on what is "cricket" in campus attire—for everything from picnic to formal occasions. Many different types of clothing were modeled; many were beautiful and expensive.

The show was seasoned with an array of talent. Jerome Kern's musical, "Showboat," was the theme and very well chosen for such an occasion. All of the musical selections were from "Showboat," with the exception of two numbers by "The Three Flats and a Spare." Other vocal artists were the girls' trio—Ruth Hauge, Janet Towe, and Donna Giger—Pat Bondurant and Sig Toljefson.

This style show is something that we as a family have needed. It is hoped that the familiar Levi's and sloppy sweatshirts in class and dining hall will be eliminated.

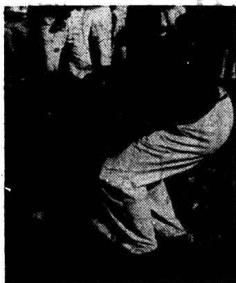
North, South Halls Elect Dorm Officers

Recent elections resulted in the following officers for South and North halls:

South: Mary Lou Biery, president; Janice Smeby, vice-president; Sandra Standa, secretary; Hope Hammarstrom, treasurer; Joanne Bayns, IOC.

North: Topper Nielsen, president; Gordon Huesby, vice-president; Ken Torvik, secretary-treasurer; Gene Peisker, IOC.

Squash!



Jerry, the great mascot, won't lose his title of "The Most Repulsive Frosh" to Norm Gradwohl as a finality of freshman initiation week.

Travel, Study Attract Frofs

(Continued from Page Two)
In East Germany. Signs of war are almost visibly gone in much of the country as reconstruction of historic and new buildings, especially apartments, takes place. Only Berlin remains much the same. The production rate in that country has risen remarkably, especially in the auto industry.

Miss Bloomquist gives the two highlights of her trip as her visit to the Cathedral at Malon and standing on the top of the Zupsitze, the highest peak in the Bavarian Alps.

Miss Knudson returned this summer to Europe where she had been in 1949. The first three weeks were spent at the University of London studying 17th Century British Prose and Poetry. A trip to Scotland, where she saw the Lady of the Lake Country and the homeland of Burns, Shelley, and Stevenson followed. She told of a wonderful weekend spent in Wantage, the ancient Anglian city of Alfred the Great, and another four days in Amsterdam with a charming family who enjoy having guests from America, South Africa, and India. Visiting Norway where she has many relatives and close friends completed her trip in Europe.

Miss Knudson commented on the improvement, both materially and morally, of the people. Europe, she noted, does not fear Communism with the same excitement we do, but is waiting for the United States to make the first political moves. Miss Knudson concluded by saying that a large responsibility for forming and maintaining realistic attitudes about our country in the minds of those abroad will be left to our generation.

PATRONIZE OUR ADVERTISERS



Ed Larson and Keith Hoefl listen to a freshman quartet composed of (left to right) Diane Olesnes, Ray Gaille, Mariene Karell, and Selma Michaelson give their rendition of "Davy Crockett, King of the Wild Frontier."

Challenge from CPS

Proposal to Pacific Lutheran

(Reprinted from CPS "Trail" of September 27)

The Trail, in view of the recent outbursts of vandalism between Pacific Lutheran College and the College of Puget Sound, would like to make the following proposal to the student bodies and in particular the student governments of both schools.

Because of the desire to continue inter-collegiate athletics with PLC the Trail would like to suggest that the loser of the November game between the two schools have their student body on a prescribed date walk to the winning team's campus.

At the campus of the winning team, the loser will be feted for their untiring efforts with a buffet dinner and assembly. This will be their reward for the long walk of some 10 miles. The losing journey will be the penalty for losing the football game.

This editorial has been written in advance of the King's-X game and the Trail does not profess to know at this date, who the winner will be in the first encounter between the two schools. This offer is made in the good spirit that typifies the students of the College of Puget Sound.

In view of the one-sidedness of the football games in the past, the Trail surmises that Pacific Lutheran will be a bit wary to accept our proposal. Because of this fact, the Trail would further like to propose that the loser of the basketball series walk to the winner's campus.

Washington State and the University of Idaho have had this walking contest for many years and it has been a big success in lessening hard feelings, and in cutting down vandalism.

We see no reason why PLC and CPS could not establish the Trail's proposal and start an everlasting tradition.

How does this sound to you eager PLCites? If you have enough spirit to go rampaging at CPS, surely you will stake an afternoon's walk on the outcome of the November CPS-PLC football game.

Let's see a few opinions in writing—(Editor).

LITTLE ARNOLD

By Bill Johnson, ACP

