



DO YOU THINK that Dave Haaland and Frank Waterworth will catch anything in our lower campus lake? As most of you know, this is our baseball field in the spring but due to the record-breaking rainfall for the month of February, it is temporarily an artificial lake.

Area High School Debate Tournament Breaks All Past Attendance Records

Invaded by five hundred high school students representing schools of Washington and Idaho, PLU played host last weekend to the annual High School Debate Tournament. Sponsoring organizations were the Department of Speech and the Washington Epsilon Chapter of Pi Kappa Delta, national speech honorary. The enrollment doubled the number of last year with twenty-six more schools attending this year, making a total of fifty-two high schools with delegations here.

Under the direction of Prof. T. O. H. Karl, the Student Director, Judi Sannerud and the steering committee members, Zane Wilson and Karen Hegstad, organized the complex machinery which ran the tournament. Pi Kappa Delta members serving as committee chairmen for preparations included Ellen Hilde, registration; Jean Adair Leppa, office personnel; Dick Helstrom, rooms and judges; Joan Maier, housing; Tim Figgins,

general arrangements; and Merle Overland, equipment.

Saturday evening, when the competition ended, Mercer Island High School had accumulated the most points in Senior Division events and thus received the Senior Sweepstakes trophy. Sammamish High School ranked next, and Seattle Prep third in the Senior Division race. In the Junior Division, Lewis and Clark High School of Spokane took first place with Marycliff High School and Ballard High School tying for second place.

A Peek at the Chapel Week

Chapel bells will introduce a whole week of speakers and talent, when they ring this week.

Those attending student body chapel next week will be presented with three distinguished speakers, a vocal program, and a presentation by the sophomore class. The chapel schedule will proceed as follows:

Monday: Pastor E. Brent Jensen from Gethsemane Lutheran Church in Seattle will bring a message to the student body.

Tuesday: Because this is Student Body Chapel Day, the sophomore class will present the program for the day.

Wednesday: The student body will hear from its own president, Dr. S. C. Eastvold, recently back from Hawaii.

Thursday: Mrs. William Winden, a voice teacher at PLU, will present several vocal numbers to her audience.

Friday: As yet, it is uncertain as to the speaker for this day.

Pastor Stanley Olson, head of the Jewish Mission of The American Lutheran Church, will speak to the student body, Monday, March 13.

Enrollment Data Now Completed

Having secured the final registration total of 1619 students for spring semester 1961, Mrs. Linka Johnson, PLU's Registrar, has worked long hours to break it down into more specific facts and figures.

Registration for summer, fall and spring semesters totals 2,324 students, consisting of 1,073 men and 1,251 women.

Of the total 1,619 students enrolled for this semester, there are 793 undergraduate men, 238 freshmen, 226 sophomores, 177 juniors and 152 seniors; and 858 undergraduate women, 318 freshmen, 217 sophomores, 167 juniors, and 156 seniors. Enrolled in PLU's graduate school are 112 men and 104 women.

PLU Hosts Weekend Guests; Regional SWEA Will Meet

Over 200 college and high school students will be on campus tomorrow for the Winter Western Regional meeting of Student Washington Education Association, "New Horizons in Academic and Professional Training" is the theme.

The day's program will bring to the SEA and Future Teachers of America members information of "new horizons" in elementary teaching, secondary teaching, and special education. It will begin with a coffee hour at 9:00 a.m. in Chris Kautzen Hall, and meetings starting at 9:45. The final meeting will end at 3:45 p.m.

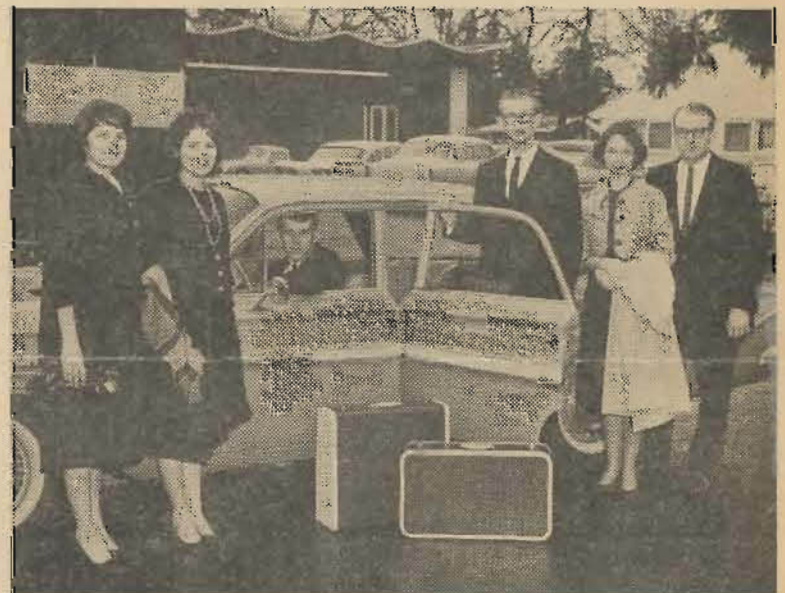
Some of the highlights planned by the PLU chapter are a showing of the film, "The Influential Americans" and presentations of several noted speakers. A morning address on "New Horizons in Professional Training" will be given by Doctor Roy Whitfield, dean of graduate study at Eastern Washington College of Education. Developing the conference's theme still further will be Doctor J. Wesley Crum, dean of education at Central Washington College of Education, with "New Horizons in Academic Training."

New insights will be gained through small group discussion periods in the morning and afternoon.

In charge of the arrangements for the meeting is Judy Anderson, aided by registrars in the dorms: Diane Atwood, West; Mary Rogers, North; Jane Jacobson, South, and Margie Quick, Ivy. Also helping with registration are Ruth Walker and Nellie Breimer. The host club for the high school ETA group is North Thurston High School of Lacey, Washington.

PLU students' registration fee is 50¢, which includes the coffee hour and luncheon, to be held at 12:30 p.m. tomorrow.

Ten Western Washington colleges will be represented at the meeting. They include Western Washington College of Education, Centralia College, Clark College, University of Puget Sound, Everett Junior College, Olympic College, St. Martin's College, Seattle Pacific College, Seattle University, Skagit Valley College, and Western Washington College of Education. In business meetings delegates from these schools will elect a Western Regional Coordinator and nominate students for state officers next year.



THESE SIX DEBATEES were among the fourteen forensic students who left last Wednesday afternoon to compete in the contest at Oregon's Linfield College. From left to right are: Claudette and Jeanette Baker, Dick Helstrom, Merle Overland, Rosalyn Foster, and Zane Wilson.

Debaters Vie for Top Honors At Tourney Held at Linfield

Destined for the "Tournament of Champions," fourteen PLU students left Wednesday afternoon for the annual forensic contest at Linfield College in McMinnville, Oregon. The Debate Tournament events began yesterday, March 2, and will continue until late afternoon of March 4.

As one of the last trips of the Forensic Squad this year, all speakers representing Pacific Lutheran are entered in Oxford or Lincoln-Douglas Debate on the national topic for collegiate debates, Resolved: That the United States should adopt a program of compulsory health insurance for all citizens. In addition, individuals are entered in speaking events which include: Oratory, Impromptu Speaking, Extemp Speaking, Interpretative Reading, After Dinner Speaking, Salesmanship, Interview, Public Address and Radio Speaking.

Traveling as the Senior Division Squad are Judi Sannerude, Joan Maier, Dick Helstrom, Zane Wilson, Andy Carlson, and Merle Overland. Junior Division members include Andrea Hagen, Jean Adair Leppa, Claudette Baker, Jeanette Baker, Norma Dayhoff, Ron Swift, Mike Burnet and Gordon Gray.

Prof. T. O. H. Karl, chairman of

the Department of Speech, heads the University's Debate Team and accompanied the students along with Mr. Stanley Elberson of the Speech Department faculty. Prof. Karl will also serve on the Tournament Committee which handles the Linfield tournament.

In addition to being one of the most competitive tournaments PLU attends, the trip also affords the opportunity for prospective pledges of Pi Kappa Delta, the national speech honorary, to be groomed for a later initiation here on campus. This usually results in Junior Squad members serving as pledges and errand-runners for the senior members.

One of the larger tournaments attended by PLU, the Tournament of Champions usually hosts thirty to thirty-five universities and colleges from the eight western states.



Tonight's campus movie will be the "Wrong Man," starring Henry Fonda. It will be shown at the Jacob Samuelson Chapel at 6:30, 8:15, and 10:00 p.m.

Pacific Lutheran's next children's theatre production will open next Thursday, March 9, at 12:30 p.m., with the play "Tom Sawyer." It will be held in the CMS.

Tomorrow night's campus movie will feature Paul Newman in the "Silver Chalice." It will be shown at 7:15 and 9:30 p.m. in the JS Chapel.

Sixteen musical instruments with a total value of \$4,664 were reported stolen last week-end from the CMS. Eight clarinets, two flutes, two cymbals, a French horn, a piccolo, a baritone saxophone, and an oboe were all stolen, but have since been recovered.

The Philokaleans will hold their regular monthly meeting on Thursday, March 9, in the small dining room of the CUB at 12:30 p.m. Following a short business meeting, Dr. Utzinger will speak to the group on the pleasing personality speech of the teacher, and speech habits that he should be aware of among his pupils.

Attention, students with unusual snapshots of campus life—why not have that snapshot printed in the Saga? Pictures may be placed in the designated boxes in the lounges of North, South, West, and Harstad Halls. Off-campus and lower campus students may place their pictures in the student body mail slot in the Student Body office. If you would like the picture.

Remember: We can only have snapshot pages as good as the responses that we receive from the students, so let's really add to the 1960-61 Saga.

In the Know?

Hiding from Life?

What are the conditions in Africa at the present? Who are the members of President Kennedy's cabinet? How is the situation in Communist China?

I wonder how many students could give adequate answers to these questions. It seems that we are so caught up in chapel, classes, studying and social activities that we tend to forget the world that lies outside the sanctuary of our institution. College should be preparing us for life in a complex world, but is it serving this purpose? Is it making us aware of the world and its affairs, or are we living a sheltered existence from whence we will have a rude awakening one day, when we leave this rather protective society? This is the time in our lives when we should be learning about life and developing an interest in the world at large.

Is an institution or education of true worth and value which shelters and separates us from the important main stream of human existence? We cannot block out life and its manifestations, by ignoring and hiding from them.

Ann Haggart, editor

Dear Editor:

Dear Editor:

The libraries of the two universities in Tacoma have had a most friendly relationship and through the years have been mutually helpful to the faculty and students by permitting loans to those from the other campus. We were therefore disturbed to discover that students have on occasion abused the privilege by failure to return books on time, leaving books exposed to the weather, and failure to pay assessed fines.

We regret that any student from PLU should so repay a courtesy, beyond the call of duty, extended to him by our sister institution. This is a plea that those in the future using the facilities of UPS will be most careful to keep the good relations intact.

Mrs. Beckman, Circulation Assistant
PLU Library

Writings Reveal Ancient Man

People always seem to have a fascination for what is ancient. Though a few hoary artifacts remain to remind us of antiquity—vases, inscriptions, a temple or two—there is no way to listen to ancient man except through what he has written. We can listen to Antigone. This drama confounds us with a most bizarre revelation: people then, thought, spoke, reacted, and dreamed the same dreams as we do today.

However, the only similarity the ancient Antigone has to Alpha Psi Omega's spring play—production wise—is in the use of makeup. Antigone 1961 will be presented in stylized makeup, even as the Greek tragedy utilized distinctive, stylized masks. I could tell you more about this makeup, but it would shock most of you, revolt some, amuse some.

The play we are doing is on reserve in the library for anyone with enough time and initiative to check it out and assail its pages. Why don't you listen to it yourself?

Fred Bindel, Director

LITTLE MAN ON CAMPUS



"I UNDERSTAND YOUR CLASS STARTED DISSECTING CATS OVER IN LAB TO-DAY."

World Politics Column

Knights-America!

by Gordon Gray

"The great end of life is not knowledge but action."—T. Huxley. A dynamic and progressive society, if it is to survive in this complex world, must develop a course of definite action. Until 1961, the United States has been hopping around trying to stop this war and curb that evil force. For example, NATO was formed with the expressed purpose to curb Communism. But can we simply defend ourselves or must we attack?

W. W. Rostow, in his book, *The Dynamics of the Soviet Society*, has contended the Soviets have been in the right place at the right time. We see this happening in Africa, Southeast Asia, and even in Europe. And all this time where has the U. S. been? Well, we either have not recognized the problem in time or when we finally entered the picture, we entered like a bumbling idiot.

Stagnation

For example, in Laos before the United States would hardly offer this country any concrete aid to alleviate its internal problems, the Soviet Union had armed the rebel forces and the de facto government was facing a crisis. Africa paints the same picture. When Lumumba was over here asking for U. N. help, he was also contracting secretly with the Soviet Union for arms and troops. Where was the U. S.? We had to wait for another crisis to appear. And in Berlin, the United States was really out of step! We let the Communists control the entire area around this city and then we decided that we would defend it. Now what is the crisis? WAR! "Berlin is the match which could blow the powder keg." Former President Eisenhower contended this on many occasions.

Again, where are we? It has be-

come the U. S. position that we must wait until an attack of some sort has taken place before we will become involved. It is against our righteous philosophy to be an aggressor. Presently we are hopping all over the world trying to curb the forces of Communism, but we are not taking an offensive position. We would rather defend than take the initiative.

Action

But now the time has come for us to re-evaluate our policies. One must attack before he can conceive any idea of victory, for as Sir Winston Churchill said, "It is better to be making the news than taking it, to be an actor rather than a critic." The question is, how should we fight—economically, militarily, or ideologically. President Kennedy has said that we must stand upon an ideological foundation; we, in America, must live up to our democratic ideals; we must help the peoples who are trying the democratic way of life. Let us remember that a volunteer fire department halts, but rarely prevents fires. It repels but rarely rebuilds; it meets the problems of the present but not of the future. This must become the position of the United States; that is taking aggressive action where and when it is needed and not waiting for the Communists to make the first move, but this much needed action must be economic or ideological—not military, for a militant act may result in total destruction for both sides, and we must be alive to make the world safe for democracy.

"There are two good things in life, freedom of thought and freedom of action." Let us think; let us act—wisely. Let us make the knight an important piece on our world chess board—a piece for victory.

Student's Dilemma

Last week the Mooring Mast ran a letter from a "would-be student" who complained about the lack of study facilities on the PLU campus. And upon closer investigation, we have found he has good grounds for complaint.

There are about 1,619 students enrolled at PLU. Some 1,050 of these live on or around the campus; the others come to classes during the day and/or in the evening. All of these students need some place to study. The question raised last week was: "Where are we supposed to study," and from the comments heard this week, there are many people who echo this question.

The most obvious answer should be: at home. For the majority of the students home is their dormitory room which is equipped with desks, book shelves, and study lamps. But as any dorm-dweller knows, these conveniences don't hold out long against talkative visitors, telephone calls, noisy roommates, and brawls in the halls. Even the "lesser" disturbances—hi-fi's full blast and radio news reports—can ruin a dorm study session. Some boys have called Harstad "a regular zoo" because it's so noisy. And the girls know that their dorms are all too often big social gabfests. One girl complained, "I've yet to be able to study even one whole hour without being interrupted to talk!" When the houring is for a big exam, the situation really gets crucial.

The next step, then, is the library. During the day, the prospects are the best, which even then aren't too good. The studying in the group study room goes fine if no one is talking. The study desks in the stacks are subject to constant distraction by the traffic coming and going and often stopping to talk. The reference room is not too bad, although with the changing classes there is a continual traffic in and out. At night, the library turns social. The students in the reference room might be studying, but a substantial number usually end up in a mass exodus to the CUB. Down in the "catacombs," a lone studier is sure to feel like a fifteenth wheel among all the couples—many of whom do a debatable amount of studying!

From there the true student has to be creative about finding a place to study. In the dorms, scholars pack the broom closets, ironing rooms, kitchens, stairs, even the bathtubs! On campus, they shell up in the spare classrooms, the practice rooms in the CMS, and the labs in the science building.

These students have a right to think something is wrong. Something is. A university is naturally dedicated to study, but it has to provide adequate facilities for students!

Late to Arrive, In a Hurry to Go

by R. Dennis Graedel

In last week's Mooring Mast, Martin Schaeffer commented upon the musical selections played by the Seattle Symphony in their recent Artist Series appearance. In this article I should like to note their stage presence during the concert.

The evening began with the members of the Symphony arriving at PLU late, thus the concert did not start on time. This was their first display of unconcern for the audience, and this theme was carried through to the end. In fact, the entire performance gave me the impression of not a performance but a rehearsal.

Time after time the musicians showed utter thoughtlessness for the near-capacity crowd. Again and again as I watched the concert the word "rehearsal" ran through my mind: I saw many musicians engaged in conversations during Mr. Katims' introductions, I saw the variety of dress (some formal, some semi-formal), I saw members of the Symphony not bothering to rise to acknowledge applause.

To me, it was obvious the Symphony was "playing down" to us; they felt that a group of "kids" did not deserve the best behavior of the musicians. As a result, PLU's "most formal social event of the year" was slightly better than a rather formal rehearsal for a later concert.

The evening could not have ended more typically than it did. Two members of the brass section simply got up and left after the first encore, "The Typewriter Song" (typewriter furnished by the Speech Department). They thought the concert was over. They had to be called back to perform the final encore, once again exemplifying their gross unconcern for their audience.

Please remember, I am not complaining about their music (that was done last week). It was enjoyable. The music was happy, easy to listen to, and well-conducted.

But PLU paid for a professional group, and got an unprofessional performance.



MOORING MAST



- Editor.....Ann Haggart
News Editor.....Alice Wenness
Reporters: Margy Eash, LaVonne Erdahl, Barbara Ericksen, Rosalyn Foster, Janet Guthrie, Deanna Hanson, Sandra Heiren, Larry Iverson.
Feature Editor.....Ruth Walker
Reporters: Gordon Gray, Dick Halvorson, and Ann Schnackenberg.
Sports Editor.....Mike Macdonald
Reporters: Dave Bottemiller, Ed Davis, John Fey, John Hanson, Bob Howard, Bob Rydland, Gary Sund.
Intramurals Editor.....Gordon Gradwohl
Photographer.....McKewen Studio
Business Manager.....Doug Johnson
Ad Mgrs.....Donna Van Gilder, Eleanor Bousfield
Circulation Manager.....Judy Kragh
Mailing.....Judith Johnson, Carolyn Thomassen, and Mary Walker.
Advisor.....Mr. Milt Nesvig

The Mooring Mast is published weekly during the school year by students of Pacific Lutheran University. Subscription price: \$3.00 per year. Phone LE. 7-8611.



OFFICIAL PLU RINGS

Custom Made to Your Stone, Engraving and Size

Ron Soine Extension 79

Accent on Campus Sports

Intramural Basketball Tournaments In Full Swing; 2nd Rounds Begin

First Round Results

GAME No. 1

M-Squad (73): Al Johnson 14, Sovde 14, Skurdahl 14, Bob Brodhun 10, Al Blomquist 10, Warren Lee 5.
Western B (44): Dave Evans 18, Roy Kalla 10, Bob Julin 10, Erv Marlow 6. (Loser out)

GAME No. 2

Evergreen (61): Roger Reep 28, D. Haaland 10, Karl Gronberg 9, L. Peterson 6, D. Savage 4, K. Ruud 4.
2nd Floor (52): Bob Anderson 21, Duane Johnson 10, Gary Stubbs 10, Don Jordon 6. (Loser out).

GAME No. 3

Western (63): G. Schaumberg 23, Ivar Eliason 14, Ors Christenson 10, L. Eliason 7, Gary Nevers 5.
Nads (37): Greg Hatten 11, Jim Eller 9, D. Berg 6, K. Riggers 5, T. Larson 5, L. Dahl 2. (Loser out).

GAME No. 4

Faculty (58): Lundgaard 27, Steen 12, Salzman 10, Jim Gabrielsen 7, Klopsch 2.
Bandits (41): Bill Peterson 10, T. Alden 9, Lechner 7, Boeshans 6, Jonson 4, Christenson 3. (Loser out).

GAME No. 5

4th Floor (55): Jerry Poppin 17, Jerry Evanson 14, G. Vestal 11, Bob Mattson 7, Don Keppler 5.
Eastern B (33): Loren Hildebrand 15, Don James 10, Larry Schoenberg 7, Eric Redal 2. (Loser out).

GAME No. 6

3rd Floor B (45): Marv Snell 15, Gerald Gettis 11, Ed Davis 9, Curt Gettis 6, John Hanson 4.
Evergreen B (32): F. Waterworth 13, Ericks 8, Johnstone 4, Kicland 4, Erlander 2. (Loser out).

GAME No. 7

Blue Devils (46): J. Kelly 11, Gradwohl 9, Latimer 6, H. Peterson 6, J. Kuball 4, Schlenker 4, Larson 4.
Vets (34): Al McLean 8, L. Jones 8, D. Haggerty 6, Mike Healey 5, Jim Scarce 5, Corey 2. (Loser out).

GAME No. 8

Rebs (49): John Johnson 15, E. Lindholm 13, Daryl Ashpole 12, John Backlund 5, Jon Olson 4.
Beach Bums (23): Jon Kvinsland 8, Bill Kuder 8, Paul Halvor 5, Chuck Zuber 2. (Loser out).

GAME No. 9

1st Floor C (40): Dennis Gudal 13, Arvin Meyer 12, Blythe 7, J. Martilla 4, Den Harris 2, Gil Vik 2.
Retreads (38): Norton Wise 12, Gary Shaw 12, Jim Putnam 6, Jim Geise 5, Bruce Bindel 2. (Loser out).

GAME No. 10

Hustlers (31): Dave Yorkers 8, Jim Laird 8, Orv Jacobson 8, Don Isensee 4, Paul Christian 3.
5th Floor (30): Mark Anderson 17, Larry Farrar 11, Al Erickson 2. (Loser out).

Table Tennis Tourney Won By Ted Meske and Eric Redal

Amid the hustle and bustle of intramural basketball the past month, the intramural table tennis tourney took place. In the singles tournament last year's IM horse-shoe pitching champ, Ted Meske, took first place honors, defeating Harold Peterson in the final match. Both are from Eastern Parkland and gave Eastern a one-two place in the event.

In the doubles tourney, Meske teamed up with Eric Redal to down 3rd Floor's team of Charlie Sigmund and Jim Eller in the finals. This gave Eastern a first place and 3rd Floor the 2nd place points in this event, the first of the IM individual tourneys.

With the first rounds nearly complete the intramural "A" and "B" basketball tourneys move into the second rounds Saturday. In the "A" tourney "M-Squad", Evergreen, Western, Faculty, 4th Floor and 3rd Floor B move into their second games with the "Tippers" and Eastern who drew 1st round byes. 3rd Floor B is the only remaining "B" league team in the tourney, the 1st day saw the other six single elimination losers.

In "B" tourney competition the "Blue Devils", "Rebs", 1st Floor C, "Hustlers," and the winners of the Delts-Reliables, Joes-Baseament games tonight move into their 2nd round games tomorrow with the "Playboys" and Eastern C who rested Tuesday. What happened in the "A" tourney was expected, but some mild upsets did occur in "B" play. 1st Floor C the favorite over the "Retreads", had trouble throughout the game, having to freeze with a 1-point lead in the final 30 seconds last night Denny Gudal stepped to the free-line to hit the gift toss—the Retreads could not tie as time ran out. In another close one the "Hustlers" from 4th Floor who started the season in "B" League and dropped to "C" competition had their hands full last night with the 5th Floor "Shamen" via "D" League. They eked out a 1-point win as 5th's Mark Anderson tipped in a jump ball to no avail in the final second.

3rd Floor Smothers B's; Dave Evans Best Shot

Pictured at left are the starting five for the 3rd Floor B's who accounted for their club's 15 straight wins and the "B" League crown. Some brief facts on the season: Best offensive average—Western B, 55.35 points; 3rd Floor B, 53.21. Defensively 3rd Floor allowed an average of 37.35; the "Nads" 41.07; Evergreen B, 41.41. Personal fouls—Jim Eller 25, Dick Johnson 24, and Gary Jonson 23.

Dave Evans, Western B, won the mythical scoring crown with 268 points in 14 games for an average of 19.14. Dave, at right, was Western B's stalwart throughout the season.



MARV SNELL



GERALD GETTIS



JOHN HANSON



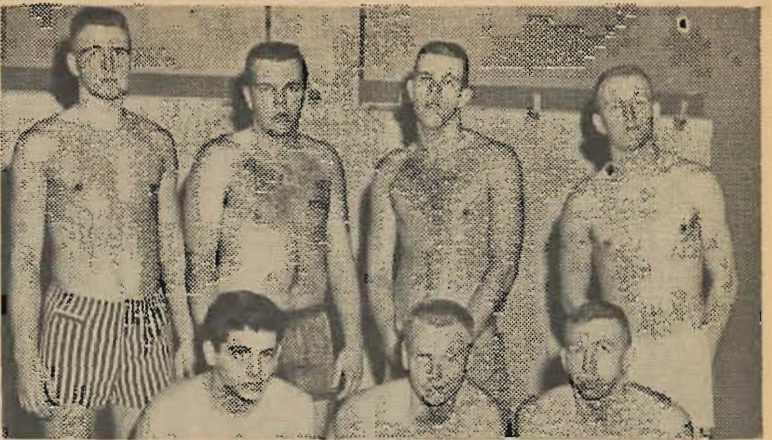
CURT GETTIS



ED DAVIS



THE HAND



3RD FLOOR "TIPPERS"—Back (l. to r.), George Viegland, Bruce Nunes, Doug McClary, and Mike Macdonald. Front (l. to r.), Jack Cocchi Lars Johnson, and Don Fossum; absent is Nate Stime. These are the men who came through the season with a 11-3 record to take the intramural basketball championship. Downing "M-Squad" 56-48 in their final, they now hope for the intramural "A" tournament title.

'Tippers' Take 'A' Title; Rog Reep Is Top Scorer

Last Saturday in the final day of league play the 3rd Floor "Tippers" downed the 3rd Floor "M-Squad" 56-48 to take this year's intramural basketball title. Eastern lost to a hot-shooting 4th Floor bunch to drop into a 3-way tie for 2nd place. The "Tippers" title is not at stake in the current tournament, but it would be embarrassing if they didn't place.

Briefly reviewing the season, here are some interesting facts: Sporting the best offensive average as a team were the "Tippers" with a per game average of 61.28 with Eastern 58.28 and Evergreen 57.28, following. Surprisingly the best defensive average was posted by the last place "M-Squad" who allowed only an average of 41.71 points to be scored against them; Eastern 49.42, and the "Tippers" 49.92, were next. The longest winning streak of the season was five games, posted by the "Tippers," Eastern and Evergreen; the longest losing streak (four) was by the "M-Squad." In the personal foul department Gene Lundgaard (not to anyone's surprise) was the worst offender, posting 32 through the season; Dave Sovde had 31 and Dave Haaland, Ron Hovey, and Jerry Poppin each caught 30.

In the scoring race, which was a two-way struggle between Roger Reep and Gene Lundgaard, Roger won out, averaging 23.66 points per game to Lundgaard's 23.25. Roger posted 33 points in Evergreen's final tilt against Western while Coach Lundgaard was held to 17 in the Faculty's final against "M-Squad."

Final 'A' League Standings

Team	W	L	PF	PA	Pct.
3RD FLOOR TIPPERS	11	3	859	699	.785
Eastern Parkland	9	5	816	692	.642
Evergreen Court	9	5	802	806	.642
Faculty	9	5	700	694	.642
Western Parkland	7	7	738	750	.500
4th Floor	5	9	668	723	.357
3rd Floor M-Squad	5	9	606	584	.357

Final 'A' League Top 20 Scorers

Name and Team	Tot. Pts.	GP	Ave.
1. ROGER REEP, Evergreen	284	12	23.66
2. Gene Lundgaard, Faculty	279	12	23.25
3. Gene Schaumberg, Western	217	13	16.69
4. Dave Haaland, Evergreen	190	12	15.83
5. Jack Cocchi, Tippers	200	13	15.38
6. Ron Hanna, Eastern	210	14	15.00
7. Roy Hagerman, Eastern	181	13	14.69
8. Doug McClary, Tippers	180	14	12.85
9. Ron Hovey, Eastern	172	14	12.28
10. Jerry Evanson, 4th Floor	132	11	12.00
11. Bruce Nunes, Tippers	144	13	11.07
12. Jerry Poppin, 4th Floor	147	14	10.50
13. Nate Stime, Tippers	103	11	9.36
14. Ors Christenson, Western	117	13	9.00
15. Mark Salzman, Faculty	102	12	8.50
16. Dave Bottemiller, M-Squad	93	11	8.45
17. Gary Vestal, 4th Floor	108	13	8.31
18. Ivar Eliason, Western	83	10	8.30
19. Jim Gabrielsen, Faculty	97	12	8.08
20. Larry Flamoc, Eastern	98	13	7.53

(It should be pointed out that forfeit games are not counted in figuring any of the averages, but do count towards participation. Only those players who participated in at least 70% of the league games are included in the top twenty.)

Final 'B' League Standings

Team	W	L	PF	PA	Pct.
3RD FLOOR "B"	15	0	747	523	1.000
3rd Floor Nads	9	6	605	575	.600
Western B	8	7	777	697	.533
Eastern B	8	7	683	656	.533
Evergreen B	8	7	510	497	.533
Basement Bandits	6	8	557	577	.428
2nd Floor	1	13	405	583	.071

Final 'B' League Top 20 Scorers

Name and Team	Tot. Pts.	GP	Ave.
1. Dave Evans, Western B	268	14	19.14
2. Jerry Redburg, Eastern B	209	12	17.41
3. Gerald Gettis, 3d Floor B	207	12	17.25
4. Jim Eller, Nads	158	14	11.28
5. Curt Gettis, 3rd Floor B	112	10	11.20
6. Roy Kalla, Western B	117	11	10.63
7. Marv Snell, 3rd Floor B	126	12	10.50
8. Bill Peterson, Bandits	122	13	9.38
9. Erv Marlow, Western B	121	14	8.64
10. Greg Hatten, Nads	116	14	8.28
11. Mike Thompson, Bandits	72	10	7.20
12. Jim Boeshans, Bandits	85	12	7.08
13. Gary Jonson, Bandits	83	12	6.91
14. Frank Lehman, Evergreen B	69	10	6.90
15. Loren Hildebrand, Eastern B	78	12	6.50
16. Dick Johnson, 3rd Floor B	69	11	6.27
17. Stan Charleston, Eastern B	63	11	5.72
18. Larry Schoenberg, Eastern B	68	12	5.66
19. Chuck Nicmi, 2nd Floor	49	10	4.90
20. Ed Davis, 3rd Floor B	67	14	4.78

DELUXE BURGER in a 50c basket with fries.....
Parkland Triple XXX
119th and Pacific Avenue

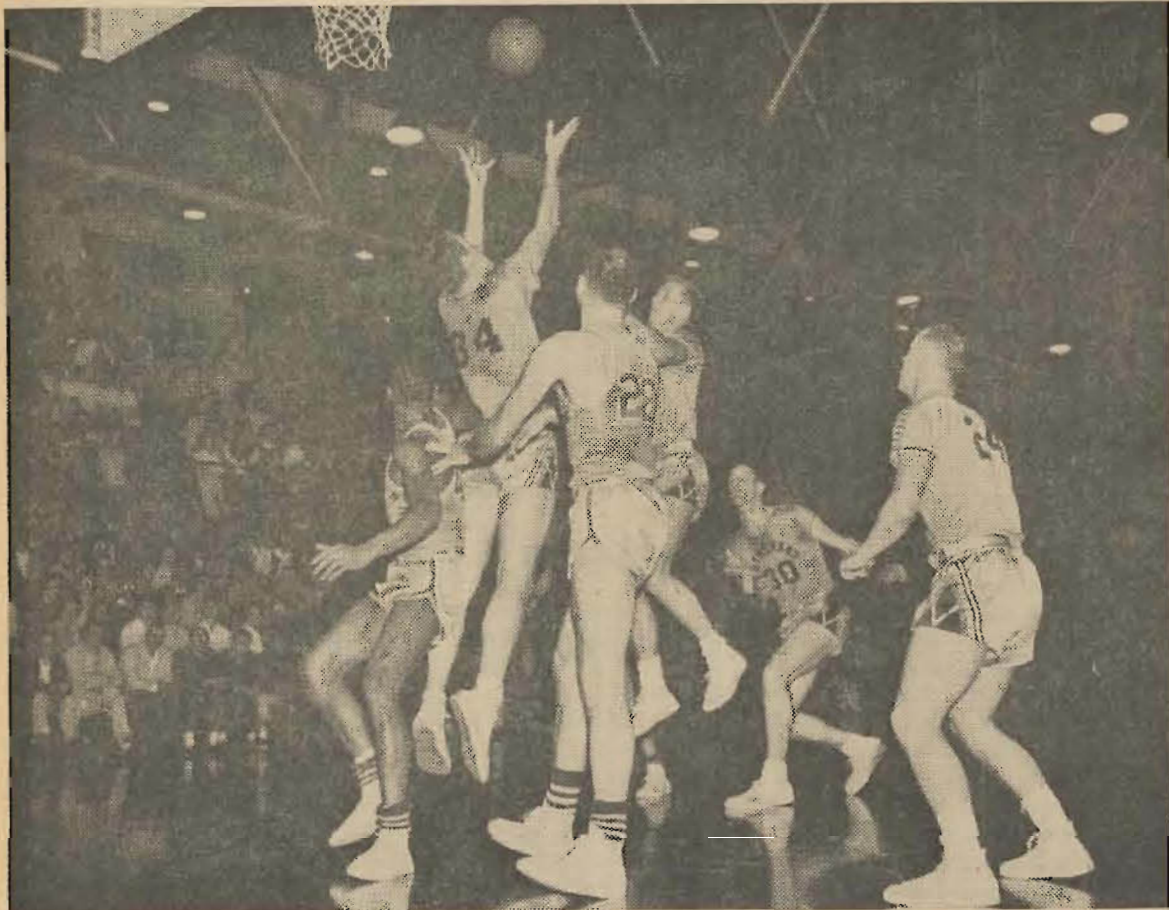
STELLA'S FLOWERS
Flowers for All Occasions
12173 PACIFIC AVE. LE. 7-0206
(Foot of Garfield) We Deliver

ECON-O-WASH
12171 Pacific Avenue
Wash 20c, Dry 10c
SHIRTS AND DRY CLEANING

YOUNG'S Gift Shop
SCANDINAVIAN GIFTS
516 Garfield LE. 7-5559
(Across from Old Main)

TOWNE HOUSE
Donut Bar and Quick Lunch
HOME-MADE PIE
DONUTS TO GO
Order Today for Tomorrow

Sky's the Limit for Carr



RALPH CARR LEAPS HIGH above his opponents to grab a rebound in the recent Western game. Bob Jacobson is also in the air ready to give a helping hand. Rich Stanley (24) and Larry Paulson (30) observe his action.

Jon Malmin, Standout Freshman Cager, Chosen Outstanding Player of Week

One of the promising freshman basketballers waiting in the wings to carry on the PLU cage tradition is Jon Malmin. Jon hails from Franklin-Pierce High School where he was all-conference on the maple.

Family tradition made his selection of college no headache. The senior Malmin, known as "Pops," is Harstad Hall house-father, and Jon's grandfather. Currently majoring in chemistry, the 6'5" thin man is still receptive to the field of education.

Track Future Looms Bright

The Lute thinclads of 1961 promise to provide many exciting moments this spring. Many returnees and new students will provide depth and strength in running events and field events both.

The sprints pose one of the brightest outlooks for Lute track and field fortunes, John Hanson, a 440 man who placed second in last year's conference meet. John recently ran in the AAU Northwest Invitational, losing by only a step to Rick Harter, who had beaten Olympic champion Otes Davis the previous week. John has a time of :49.9 to his credit, and has greatly improved since his high school days. Some of the other sprinters will be Al James, Marv Snell and Mike Macdonald.

The mile relay, a prominent feature of the sprint events, will be a Knight strong point. The presence of such outstanding 440 men and sprinters as Hanson, James, Norm Dahl, and possibly Snell or Warren Lee, heighten the possibility of very fast times.

The distance runs will employ Lee, who was outstanding in the 880 during his high school days, but who has not competed for PLU, Mark Anderson and returnee Dick Clark.

Dave Bottemiller leads the hurdlers, but the search continues for the anonymous flash who has run a :14:05, but who has failed to make himself known.

The pole vault will be strengthened by two returnees—Ron Hanna placed second in last year's conference meet with a vault of 12'6", and Roger Reep followed in third spot.

Broad jump men also appear formidable. Al James is reported to have done 22 feet. Dave Bottemiller will fill out the event, along with Dave Barker, who specializes in the shotput and high jump, but who is outstanding for all around ability.

The season opens March 25 here by a dual meet with Seattle Olympic Club.

Last Thursday's 76-65 defeat at UPS was Jon's real proving ground. He uncorked his best night with 17 points and a real determination under the boards in combat with Logger Bob Sprague. Matching rebound strength with the 240 UPS freshman is no easy task. Jon's lean frame has been shock resistant against the league strong men all season. When asked about his weight disadvantage he replied that he was gaining a lot of experience bumping into the Lutes' Swedish import, Hans Albertson.

"After the basketball season I'm going to start lifting weights, and turn out for track." He credits the high school bar bell training for his amazing endurance.

Reflecting back on the season, Jon rates the Western series as the most grueling of the games. His optimistic nature flashed on when with regard to next year's squad: "It will be good," he enthusiastically predicted.

Lutes Sweep Snowshoe Race

Members of the Pacific Lutheran Ski Club walked off with two first places last weekend at the Winter Carnival at Timberline Lodge on Mount Hood.

Paul Soderholm led the Lutes to a sweep in the men's snowshoe race. This was the third straight year that PLU has taken a first in the race. Close behind Paul was Gary Shaw and in third place was John Haggston.

Elaine Olson and Sandy Tynes placed third and fourth, respectively, in the girls' powder-puff race.

Elaine, the Knights' ski princess, was also runner-up to Sherri Jenkins of Willamette University as Queen of the Winter Carnival.

Approximately 75 Lutes attended the intercollegiate carnival which is sponsored each year by Portland State College.

1961 Spring Sports Schedule

BASEBALL

April 4.....	PLU at CWC
April 8.....	WWC at PLU
April 11.....	SU at PLU
April 15.....	PLU at SPC
April 22.....	PLU at UPS
April 25.....	PLU at SU
April 29.....	CWC at PLU
May 4.....	UPS at PLU
May 6.....	PLU at WWC
May 13.....	SPC at PLU
May 19, 20.....	Championships

TENNIS

April 8.....	WWC at PLU
April 15.....	SPC at PLU
April 22.....	UPS at PLU
April 25.....	PLU at SU
April 29.....	PLU at SPC
May 2.....	PLU at CWC
May 6.....	PLU at WWC
May 11.....	SU at PLU
May 13.....	PLU at UPS
May 15.....	PU at PLU
May 19, 20.....	Conference at CWC

TRACK

Mar. 25.....	SOC at PLU
Mar. 28.....	SM at PLU
April 8.....	L.&C. at PLU
April 15.....	PLU at SPC
April 22.....	PLU at WWC
April 29.....	CWC at PLU
May 6.....	UPS at PLU
May 13.....	WWC at PLU
May 19, 20.....	Conference at CWC

GOLF

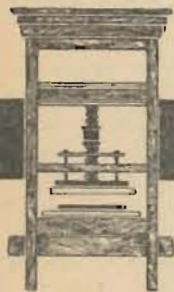
April 4.....	PLU at SPC
April 12.....	PLU at LC
April 13.....	PLU at PU
April 18.....	WWC at PLU
April 20.....	UPS at PLU
April 27.....	PLU at SU
May 1.....	PLU at UPS
May 5.....	SPC at PLU
May 9.....	PLU, UBC at WWC
May 11.....	SU at PLU
May 19, 20.....	Conference at CWC

Baseball: Doubleheaders will begin at 1:00 p.m.

Track: Javelin and pole vault begin at 1:00 p.m.; high jump and broad jump at 1:30 p.m.; running events at 2:00 p.m.

Tennis: Saturday matches begin at 1:00 p.m.; weekday matches begin at 2:30 p.m.

Golf: Matches begin at 2:30 p.m.



PARAGON PRINTERS, INC.

FINE PRINTING - LITHOGRAPHY
11802 PACIFIC AVE. PHONE: LE. 7-7100

The day you know
you must provide



Brotherhood Provider Life Insurance gives you:

\$10,000 of lifetime security for only 44¢ a day*

Because you are a Lutheran, you can own Brotherhood Provider Life Insurance and at remarkably favorable rates. That's important when you think of the family responsibilities in your future. It's reassuring to own Brotherhood Provider now... against the day when you know you must provide. Look at these big advantages:

- \$10,000 of permanent, dividend-paying life insurance.
- If you retire at 65, you can get \$13,000 in cash—a return of \$1.83 for each dollar invested.
- If you die at 65, your beneficiary gets \$16,760—your total investment is only \$7,097.

• Lutheran Brotherhood pays all premiums if you are totally disabled before 60.

All this and more for an investment of just \$161.30 a year... about 44¢ a day. You pay more than this for lunch.

Right now, think about your future... the future of those who will depend on you. Call your Lutheran Brotherhood campus representative and join the thousands of Lutherans who enjoy security and peace of mind in the bond of Lutheran Brotherhood.

*Based on age 21 and on current dividend rate, which is not guaranteed. Actual amount may be more or less than total premiums paid.

LUTHERAN BROTHERHOOD

A legal reserve LIFE INSURANCE society • 701 Second Ave. So., Minneapolis 2, Minn.

FREE full-color reproduction (5 1/2" x 2 1/4") of Martin Luther window ideal for framing. Mail coupon now.



Mail for free gift and information
LUTHERAN BROTHERHOOD Dept. CW-2
701 Second Avenue South • Minneapolis 2, Minnesota

Name _____
Address _____
City _____ Zone _____ State _____

Please furnish me:
 details about Lutheran Brotherhood Life Insurance
 free reproduction of Martin Luther window

SPLINTERS FROM THE BENCH

The reason that there is no news about the playoff in this week's paper is because last night's game with Seattle Pacific was played after we went to press. I would, however, like to explain how the playoffs are set up. Pacific Lutheran plays Seattle Pacific, Eastern Washington plays Western Washington, and the two winners play either at Bellingham or Cheney, depending on the outcome of the Western vs. Eastern game. The winner of the winner's bracket faces the Evergreen champions, Whitworth, at Spokane for a best of three series, and the winner goes to Kansas City... I am willing to go out on a limb and pick the PLU Knights to go all the way and win the playoffs. I base this prediction on the way our team played in its first eight games... Bill Robb hit a 230 game in the Little Lute Bowling League to enable his team to pull into first place by two games... For the second straight year PLU has placed first, second, and third, in the snowshoe event at Mt. Hood during the Winter Carnival... Larry Paulson has decided to turn his baseball arm into a javelin arm for the track team. Remember when John Fromm turned his talents from baseball to track? Hope Larry can do as well... Keith Shanon has turned room 318 in Harstad Hall into a miniature gym... Ken Alban plans on being the next Olympic decathlon champion... George Vigeland, a transfer student from Concordia, will be out to nail down a starting position on the baseball squad. George pitched for Concordia's freshman team last year.