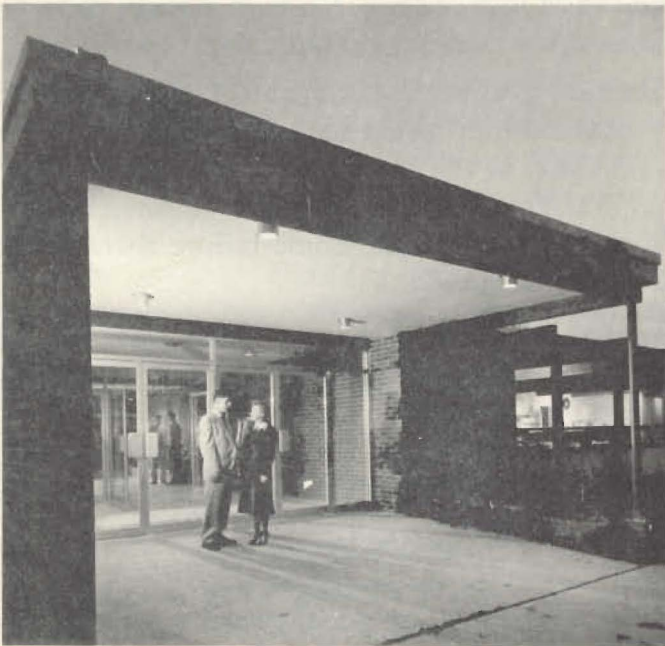


PACIFIC LUTHERAN COLLEGE

BULLETIN



College Union Building
DEDICATION NUMBER

February 5, 1956

3:30 p. m.

SOME REMARKS AT THE LAYING OF THE
CORNERSTONE OF THE COLLEGE UNION,
PACIFIC LUTHERAN COLLEGE, OCTOBER
13, 1955.

DR. ORVILLE DAHL

*Executive Secretary, Division of Higher Education,
Evangelical Lutheran Church*

It has been said, "Order is heaven's first law." The institutions of man are his efforts to achieve order in his society. The law of heaven is the desire of earth.

Man's long upward climb out of the reaches of the murky past led him to the halls of parliament and congress and there, in the concepts of representative government and respect for due processes of law, he welded, with some success here and some failure there, his institutions of freedom.

From the heights of Mount Sinai and the distant shores of Galilee the Law and the Gospel led man through centuries of worship, and heaven reached down to touch his mind and heart with the sublime. His love of God manifested itself in the Cathedral and the Church.

Out of abbeys, monasteries, courts, and guilds, man gradually fashioned his center of learning — the college and the university — as an expression of his love of truth. All of these — representative government, the Church of Christ, and the college and the university — are expressive of man's search for order and unity, heaven's first law.

Within the institution of learning the search for unity transcends all other activities. Integrated thinking, adjusted personalities, well-balanced lives, positive creativeness, a sense of direction, are just other ways of saying that learning has achieved unity and that living is orderly. These are not trivial ends; they are goals of life.

In seeking to develop the means of education towards these goals of unity in knowledge, integrated personalities, and worthwhile vocational objectives, certain internal developments in higher education have come about. One of these is an increasing use of successful techniques of guidance; another is an emphasis upon the college and university as a community in which students learn to live.

This emphasis upon translating into a college community the ideals of social organization has led to the designing of a facility which is somewhat unique to American higher education. I refer here to the College Union or the Student Center. For a time it seemed that they had their heyday in the fabulous twenties, when schools, especially larger universities, constructed huge monoliths in which were centered the social activities of the campus. But their demise is not yet, for they are undergoing changes consistent with the developments of the notions of good counselling procedures on the one hand, and the college as a campus community on the other.

The goals of the student center are commendable. They are at least three in number, and apply to the splendid College Union at Pacific Lutheran College. First, a student center seeks to provide a place where students may find friends. This is one of the richest rewards of a college experience. The way of finding friends is subtle; it is the meeting of people, the communion of thoughts, the attraction of personalities, the sharing of experiences. This College Union will provide for all of the students at this school the opportunity to increase the number of their acquaintances and mold lasting friendships.

A second objective is to increase the effectiveness of education. "To be educated" is more than classrooms and books, although they are not to be minimized. Edu-

Program

The Reverend S. C. Eastvold, S.T.D., *Presiding*
President, Pacific Lutheran College



PRELUDE

HYMN—*Come, Thou Almighty King*

Come, Thou almighty King,
Help us Thy name to sing,
Help us to praise!
Father all glorious,
O'er all victorious,
Come and reign over us,
Ancient of Days!

Come, holy Comforter,
Thy sacred witness bear
In this glad hour;
Thou who almighty art,
Now rule in every heart,
And ne'er from us depart,
Spirit of power!

Come, Thou incarnate Word,
Gird on Thy mighty sword,
Our pray'r attend
Come and Thy people bless,
And give Thy word success;
Spirit of holiness,
On us descend.

To the great One in Three
Eternal praises be,
Hence evermore;
His sovereign majesty
May we in glory see,
And to eternity
Love and adore.

SCRIPTURE AND PRAYER - The Reverend F. J. Molter
Pastor, Luther Memorial Church, Tacoma
Vice-Chairman, PLC Board of Trustees

ANTHEMS

"Our Father" - - - - - Gretchaninoff

"Advent Motet" - - - - - Schreck

Choir of the West

Professor Gunnar J. Malmin, Director

THE DEDICATORY ADDRESS AND RITE OF

DEDICATION - - - - - The Rev. H. L. Foss, D.D.

President, Pacific Dist., Evangelical Lutheran Church
Chairman, PLC Board of Trustees

Program

HYMN—*A Mighty Fortress Is Our God*

A mighty fortress is our God, A trusty shield and weapon; Our help is He in all our need, Our stay what-e'er doth happen; For still our ancient foe Doth seek to work us woe: Strong mail of craft and power He weareth in this hour: On earth is not His equal.	Stood we alone in our own might Our striving would be losing; For us the one true Man doth fight, The Man of God's own choosing. Who is this chosen One? 'Tis Jesus Christ the Son, The Lord of Hosts, 'tis He Who wins the victory In every field of battle.
------------------------------------------------------------------------------------------------------------------------------------------------------------------------------------------------------------------------------------------------------------------------------------------	---------------------------------------------------------------------------------------------------------------------------------------------------------------------------------------------------------------------------------------------------------------------------------------

OFFERTORY

Ellen K. Christensen, Pianist

HYMN—*Now Thank We All Our God*

Now thank we all our God, With hearts and hands and voices, Who wondrous things hath done, In whom this world rejoices; Who from our mother's arms Hath blessed us on our way With countless gifts of love, And still is ours today.	All praise and thanks to God The Father now be given, The Son and Him who reigns With them in highest heaven; The one eternal God, Whom earth and heaven adore; For thus it was, is now, And shall be evermore!
-----------------------------------------------------------------------------------------------------------------------------------------------------------------------------------------------------------------------------------------------------------	--------------------------------------------------------------------------------------------------------------------------------------------------------------------------------------------------------------------------------------

THE CLOSING PRAYER AND THE BENEDICTION

The Reverend Carl E. Rydell
Pastor, First Lutheran Church, Tacoma

THE DOXOLOGY



Ground was broken for the College Union on Friday, May 6, 1955, by Dr. J. C. K. Preus, executive secretary, Department of Christian Education, the Evangelical Lutheran Church. Construction began shortly thereafter by Northern Construction Company, general contractor; and Bergh-Griggs Company, mechanical contractor. Johnson-Austin Associates, Inc., architects, designed the building and supervised construction. Manufacturer of the patented cedar material that comprises a large part of the building was Cedarwall Structures, L. C. Hultengren, Parkland, owner. The kitchen and dining hall were ready for use when the fall semester opened last September. The rest of the building was completed in January. Terracing and landscaping of the inner court will be done this spring and summer. Cost of the building and equipment is \$320,000.

cation is also the imparting of instruction by example. How people act, how they do things, how they live, are all parts of the behavioral sciences to whose extension this building is dedicated. It is as the text in elementary sociology puts it, "The most difficult of all the arts is the art of living together." To develop that art is not something left altogether to chance. It is the test of the higher learning to undertake to teach people this art. That art is a rare attainment in any educational system.

Thirdly, this College Union will seek to give those who use it a vision that comes from intimate fellowship with Christians. Life's visions are not always clear; the horizons are not always radiant in sunlight. There are shadows, beating winds, and dark nights in every human life. To live so that light can be seen on the edge of night, love on the borders of despair, promise on the boundaries of disappointment, is to have achieved, of course, something eternal. But to see that all of life radiates from the Cross of Calvary and ends in the blazing light at the foot of the Throne of God is to have seen a vision. It is to have seen the order of Heaven. In this building you will mingle and associate with many students and teachers. In the lounges, shops, dining hall, and offices, you will sense that Christian fellowship which gives you comfort, joy, and vision.

This College Union is the first of its kind in our Church. It is a trailblazer. More will come, and they will be influenced by what has been done here. As a colleague still searching for the fabled goals of the higher learning and as one who deeply appreciates the vision, I greet you from The Evangelical Lutheran Church, and in its thankfulness for this splendid addition to Christian higher education, I lay this cornerstone.

Construction Begins on West Hall

In December contracts were signed and construction begun on a \$580,000 residence hall for women to be known as West Hall. It is expected that this three-story structure to house 130 students will be completed by September 1, 1956.

The building is located adjacent to North and South Halls which were completed in September, 1954. It is L-shaped and almost identical to North Hall.

Gifts are needed to furnish lounges and rooms in the new building. We need one gift of \$5,000 to furnish the main lounge, four gifts of \$1,000 each to furnish the study lounges and the housemother's apartment, and 65 gifts of \$500 each to furnish the study-bedrooms.

Contributions from individuals and groups to the Dormitory Building Fund in the past two years have furnished all of the lounges in North and South Halls and 104 of the 125 study-bedrooms.

Bronze plates with the name of the donor(s) etched on them are placed on the doors of the lounges and rooms.

Several donors have furnished rooms in memory of a loved one or friend, or in honor of a person who is living.

Send your gifts to the Dormitory Building Fund, Pacific Lutheran College, Parkland, Washington. No gift is too small and none can possibly be too large!



ANNOUNCEMENTS

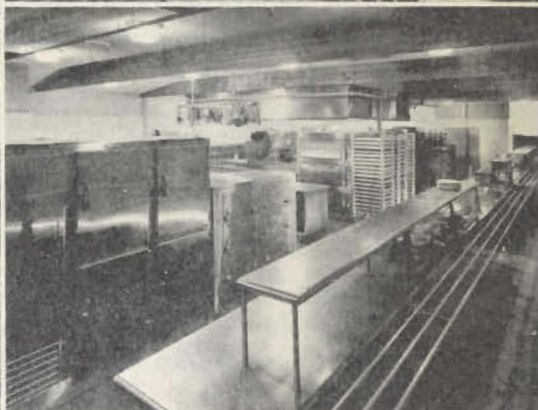
SATURDAY, FEB. 4—Alumni Reunion Banquet, 6:30 p.m., College Union.
Basketball: PLC vs. UBC, 9:00 p.m., Memorial Gymnasium.

SUNDAY, FEB. 5—Alumni Worship Service, 11:00 a.m., Chapel Auditorium,
The Rev. Luther Watness, Class of 1950, speaker; Dedication of College
Union, 3:30 p.m., Dining Hall. Dr. H. L. Foss, speaker.

THURSDAY, MARCH 15—Seattle Symphony Orchestra Concert, 8:30 p.m.,
Chapel Auditorium. Conductor: Dr. Howard Hanson, president, Eastman
School of Music, noted Lutheran Layman.

When you come to the Dedication Program, please bring this bulletin with you.

Free coffee will be served to everyone after the program.



INTERIOR VIEWS OF NEW COLLEGE UNION BUILDING

Pacific Lutheran College Bulletin

VOL. XXXVI. FEBRUARY 1956 NO. 1, PART 1

Published quarterly by Pacific Lutheran College, Parkland, Washington. Entered as second-class matter September 1, 1943, at the post office at Parkland, Washington, under the Act of Congress of August 24, 1912.