

Special Admissions Issue

U.S. POSTAGE  
**PAID**  
PERMIT NO. 416  
TACOMA, WASHINGTON

1976

# Scene

1977



# Pacific Lutheran University

Tacoma, Washington

'Quality Education In A Christian Context'

# Academic Excellence

## Getting The Picture . . .

If a picture is worth 1,000 words, this brochure offers you the equivalent of 46,000 words of information about PLU. Enjoy it at your leisure. Then we hope you'll contact us for further specifics relating to your own individual needs by returning an information card or the coupon on the back page to us.

### Pacific Lutheran University At A Glance

**Founding date - 1890**

**Enrollment -**

**New students**

Freshmen - 650

(Ave. H.S. GPA - 3.36)

Transfers - 325

(Ave. Col. GPA - 3.00)

**Total enrollment**

Full-time - 2571

Part-time - 857

**Total - 3428**

**Faculty -**

Full-time - 190

Part-time - 80

**Total - 270**

% full-time faculty with doctorates - 56.5%

Faculty-student ratio - 14:1

**Campus size -**

48 buildings on 130 acres

**Academic program -**

4-1-4 calendar. Two 14-week semesters bridged by a four-week Interim.

**Academic structure -**

College of Arts and Sciences

Division of Humanities

Division of Social Sciences

Division of Natural Sciences

School of Business Administration

School of Education

School of Fine Arts

School of Nursing

School of Physical Education

Division of Graduate Studies

**Accreditation -**

Northwest Association of Schools and Colleges

National Council for Accreditation of Teacher Education

American Chemical Society

National League for Nursing

American Assembly of Collegiate Schools of Business

Council on Social Work Education

**Degrees offered -**

Baccalaureate - Arts, Sciences, Business Administration, Arts in Education, Fine Arts, Music, Science in Nursing, Science in Medical Technology

Masters - Education, Humanities, Social Sciences, Business Administration, Music, Natural Sciences, Public Administration

**Costs (1976-77) -**

Tuition - \$2,688

(32 hours at \$84 per credit hour)

Room and board - \$1,300

**Total - \$3,988**

**Student financial aid -**

Total available - \$2,500,000

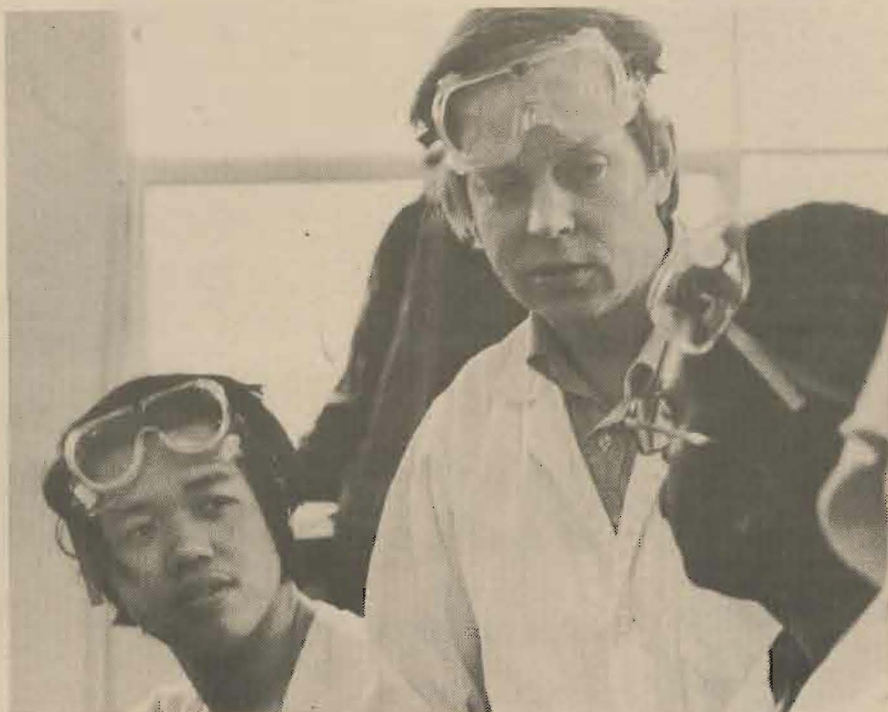
Average award to qualified applicants (usually a combination of gift, loan and employment) - \$2,500

55% of the student body is receiving financial assistance

## Dynamic Teachers . . .

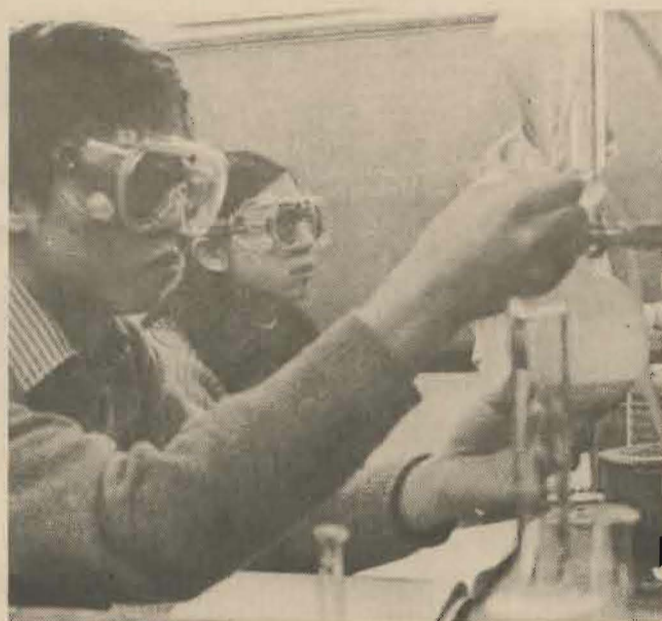


PLU professors know students on a first name basis. More than 56 per cent hold doctorates, and they all teach!



Dr. William O. Rieke  
PLU President

## Quality Academics . . .

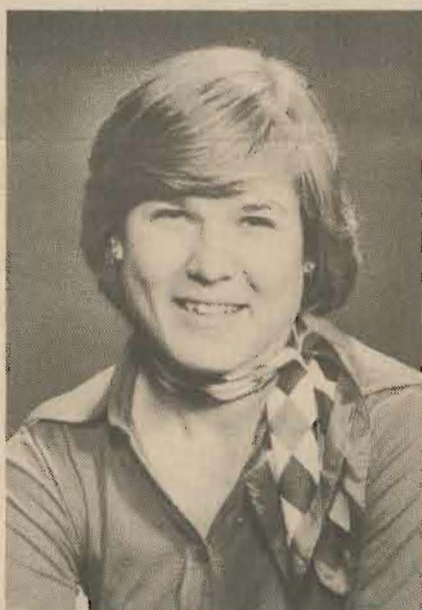


A PLU student body president said recently, "High caliber students come to PLU because of its academic reputation and programs, its location, and opportunities for spiritual and personal growth through close personal relationships with both faculty and other students."

The university seeks to maintain and build that reputation by selecting and retaining faculty members with professional competence, outstanding teaching ability and acceptance of the university principle which declares that PLU is "a community of Christian scholars dedicated to a philosophy of liberal education."

Students and faculty not only work together; they relax together, worship together and often compete against one another in intramural athletics.

## Student Achievement . . .



Marilee Fijalka, left, and Mike Armstrong, PLU class of '76, were among 40 students nationwide to receive Fulbright Scholarships for study in Germany this year.

Ed Poon '76 received a \$7,000 fellowship for graduate study in physics at Columbia University.



Several PLU students serve as legislative interns during each session of the Washington State Legislature. Among the lawmakers are Wayne Ehlers and Ron Hanna, both of whom have taught at PLU. Hanna is an alumnus.



Cindy McTee '76 studied in Poland for a year with world-renowned Polish composer Krzysztof Penderecki.

# Campus Panorama



The fountain mall in front of Mortvedt Library is a favorite gathering place for students. The library itself, rated among the top four small college libraries in the country, houses over 230,000 volumes as well as the latest in audio-visual and multi-media facilities.



Organized more than 40 years ago, the popular Mayfest Dancers help perpetuate PLU's proud Scandinavian tradition while continuing to expand their repertoire to feature the cultures of many lands. The group is one of dozens of extracurricular organizations on campus.

Lower campus, with its residence halls and athletic facilities, is a popular place for scores of informal campus activities.

PLU's upper campus quadrangle is flanked by Eastvold Auditorium (music and communication arts), Xavier Hall (social sciences), Ramstad Hall (natural sciences), historic Harstad Hall (residences) and the modern University Center.





PLU's growing academic reputation is attested to by the increasing numbers of highly motivated student applicants, high honors received by both PLU faculty and students, and more than 10,000 well-qualified alumni serving in many professional fields in the United States and around the world.



PLU is one of a relatively few institutions doing something about its environment. A well-planned natural environment area on lower campus south of the University Center preserves native vegetation and offers cover for a variety of small wildlife forms. It is a valuable campus educational and recreational resource.

## A Special Issue

This special issue of Scene was prepared during the summer for the Admissions Office as a mailing to prospective students. It was greeted with such positive response that recommendations were made that all university constituents be sent a copy.

This publication is not one of our regular Scene series and does not include campus news as such. It has been filled with photographs to give a visual impression of PLU today. In this respect it may be of particular interest to persons who have not visited the campus for several years.

We hope that all recipients will consider sharing the publication with members of their family or friends who may be prospective PLU students!

At PLU students are encouraged to broaden themselves intellectually, culturally, socially and spiritually. The internationally-acclaimed Choir of the West is one of many organizations on campus which offer such enrichment to both participants and spectators.



# Student Life

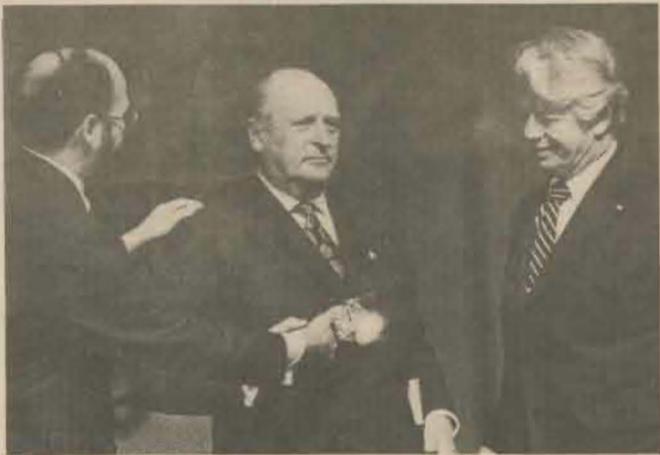
## At Leisure . . .



## The Arts At PLU . . .



## Renowned PLU Guests . . .



King Olav V of Norway



Moshe Dayan



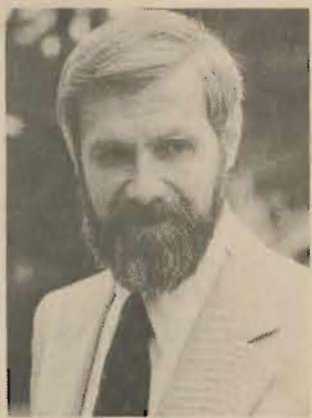
Max Lerner



'Doc' Severinsen



Dr. Helmut Thielicke, world renowned theologian.



Dr. William Foege, a 1957 PLU alumnus who spearheaded a 10-year worldwide campaign to eradicate smallpox from the world.

## Sports and Recreation . . .



## History . . .

Founded in 1890 by Scandinavian Lutheran pioneers, PLU progressed through academy, junior college and normal school phases before becoming a four-year college of education in 1939 and a liberal arts college in 1941. It attained university status in 1960.

Today 55 per cent of PLU students still come from Lutheran families. In addition, the campus is enriched by students from many religious, racial and cultural backgrounds representing most of the 50 states and some 20 foreign countries.

From its humble beginnings, PLU has become a vital Northwest center for continuing education, cultural activities, recreation, entertainment and intellectual and spiritual resources. Along with a high quality, diversified educational program, it continues to offer students a positive Christian emphasis as a foundation for building responsible citizenship and a commitment to service.



Harstad Hall  
(original Old Main)



Ten intercollegiate sports and a number of club sports are available to both men and women. Overall athletic excellence enabled varsity men's teams to retain the Northwest Conference All-Sports Trophy for the fourth consecutive year in 1976.

The grandeur of the Pacific Northwest encourages participation in many outdoor sports including hiking, camping, climbing, skiing, fishing, boating and swimming. Both men's and women's intercollegiate skiing and swimming teams compete for PLU.

A broad variety of modern recreational facilities are found on lower campus in and near Olson Auditorium, where more than 700 PLU students received bachelor's and master's degrees this past spring.

To find out more about PLU...

Please fill out this coupon and return to:

**James Van Beek**  
Director of Admissions  
Pacific Lutheran University  
Tacoma, WA 98447

Name \_\_\_\_\_

Address \_\_\_\_\_

City \_\_\_\_\_ State \_\_\_\_\_ Zip \_\_\_\_\_

Yr. of H.S. grad. \_\_\_\_\_ Phone ( ) \_\_\_\_\_

Academic interests \_\_\_\_\_

Extracurricular interests \_\_\_\_\_

