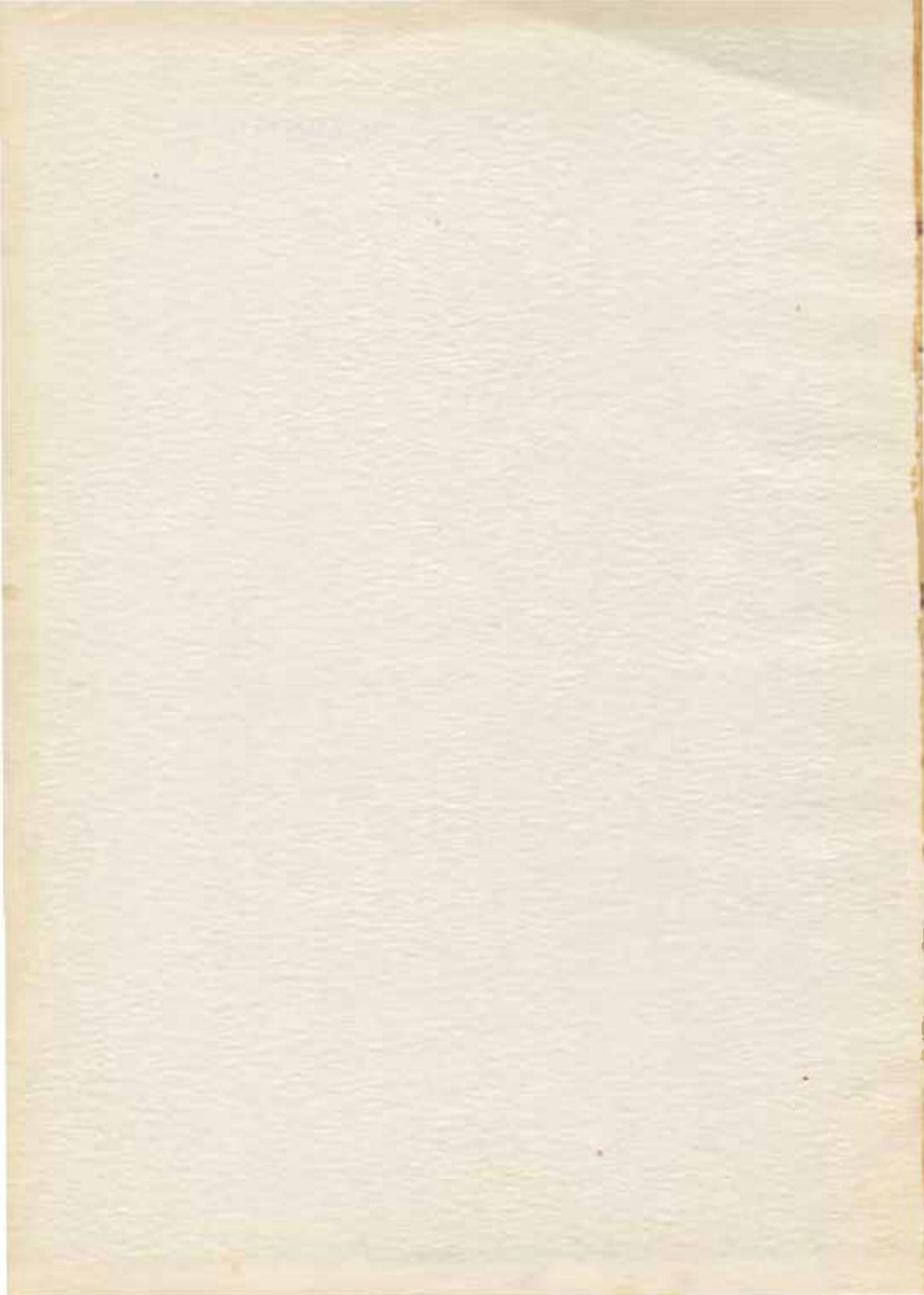


Saga

1947

BEARD PRINTING CO.

BEARD PRINTING CO.



*The*  
*Saga*  
*1947*

Published by the Students of  
*Pacific Lutheran College*  
Parkland, Washington

## *foreword*

By faith the fathers of Pacific Lutheran College laid foundations, built walls, and established for their children and many others a Christian college. The pioneers, having before them a vision of things to come, were not afraid to wield the carpenter's tools and to build.

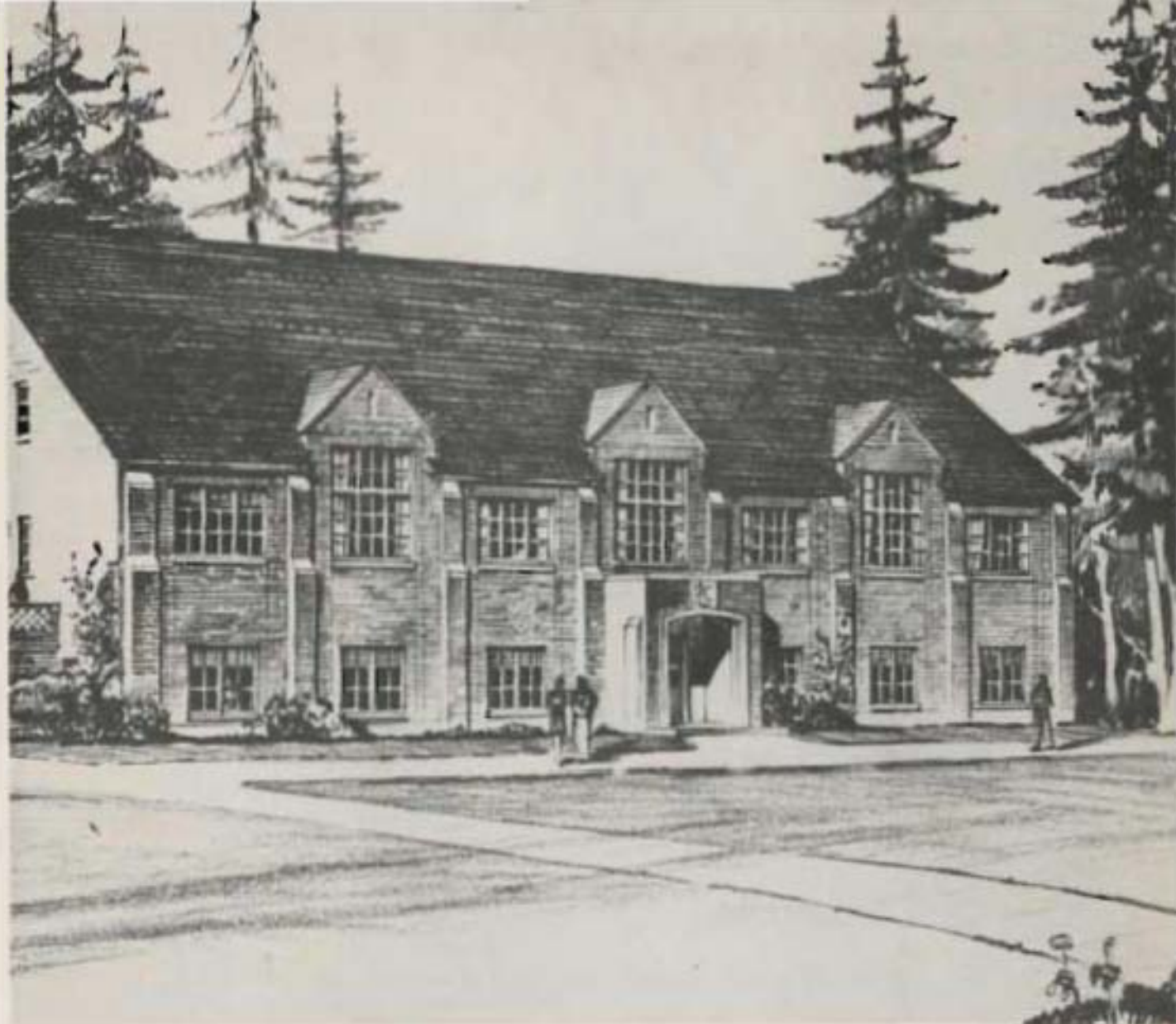
After the retreating humpets of war comes the cry to "Rise up and build!" Following the eager leadership of those who guide us, we as a college have also responded to this stirring call of the prophet — responded with the greatest building endeavor our campus has ever known.

It is fitting that we should in this SAGA of 1947 acknowledge the spirit of the time — the spirit of building, the spirit of foresight, and the spirit of progress.



## *build for character*

FOUNDATIONS  
LIVING STONES  
DOORWAYS  
ARENAS  
RUMPUS ROOMS



## *dedication*

To the whole Pacific Lutheran College family to us forward word of song  
and building for ever greater things — things "built upon the founda-  
tion of the Apostles and prophets, Jesus Christ himself  
being the chief cornerstone." Ephesians 2:20.

*roundabout  
building . . .*



CHAPEL



SCIENCE HALL



LIBRARY



PARKING LOT



GYMNASIUM



VETS'  
HOUSE



LOWER CAMPUS

ELEVATOR



REC ROOM





*foundations*



from the desk of . . .



## President Eastvold

The Christian liberal arts college is no rival. What has the sufferer in a world of guns, tanks, ships, atomic bombs, and atomic bombs?

Materialism has been tried and found wanting. It has been tested on a colossal scale in Hitler's Germany, in Mussolini's Italy, and in Tojo's Japan. Brilliant minds with brow power have well nigh prostrated the universe.

Warfare in minds and will must be stopped here. The Christian college will have its great contribution to make in this area. The individual must be reached before the whole of society can be saved. As the oak sleeps in the storm, so the majority, power, and dignity of one nation and the world lie dormant in the individual man.

The Christian college will have its final test in the kind and character of its students

and alumni. As is the warrior's sword, so is the college product: he is not produced for exhibition, but to meet life's battles on the frontiers of truth and righteousness and, if need be, to cut wounds and slay until truth sets us free.

The Christian college is not perfect, but it aims at perfection. Attention of sordid matter easily gather. Some dress must be removed. Some educational practices are likely imaginary. Certain educational shufflings are imperative. Plans show all what cannot be utilized.

The Christian college will meet the double intellect of the man of faith to lay hold on the word of God. As such he may be like David of old, he brought home a giant's bleeding head whose dumb tongue told the tale.

The Christian college will compete in this materialistic age by teaching academic truths in an atmosphere created by the word of God as revealed in Jesus Christ.

## Dean Haug

The theme "Building" is most appropriate for the 1947 Saga.

It is appropriate because this year's student body has witnessed the completion of the government housing units, has watched the Service Hall, the Memorial Gymnasium, and the government classroom buildings in the process of completion, and is now looking forward to the construction of the Student Union Building.

It is appropriate because every student attending P. L. C. is here to build better for his or her future life's work.

It is appropriate because the founders and supporters of the College are primarily concerned with the building of Christian character.





# Faculty and Administration

**COLIN M. JENNINGS, Ph.D.**  
 Physics, Mathematics.  
 Tall, Negro and slender build  
 and copious hair.



**Allen Wood Nielsen, M. A.**  
 Director of Teacher Training,  
 Education.  
 The first woman in the world  
 to ever become a Head teacher.

**ANNIE E. BOYMAN, B.S.A.**  
 English.  
 She has just done one of us  
 about... knows us like the  
 back of her hand to read.



**Clarence C. Church, Ph.D.**  
 Director of Division Physical  
 Education.  
 You know the man!

**WILLIAM L. SPENCER, B.A.**  
 History, Literature.  
 A man of letters and a scholar  
 and



**JAMES G. PATRICK, Ph.D.**  
 Business Administration.  
 An amateur motion picture  
 hobbyist.

**E. ARTHUR LAMSON, A.S., C.T.S.**  
 Vocational (Practical).  
 He comes out especially for  
 the night school.



**ANNABEL BROCK, M. A.**  
 Business Administration.  
 Her duties include register duty.

**WALTER F. LAMSON, M.A., M.S., Ph.D.**  
 English.  
 He is also a musician.



**J. P. DENTON, M.A., B.S., Ph.D.**  
 Business Administration.  
 An organizer in P. E. C. in  
 1922.

**ELLEN MARY BEARD, M.A.**  
 U. S. History, English, Psychology.  
 She has been a student and  
 a teacher.



**ARTHUR WILLIAM HAMILTON,**  
 U. S. M. A. (Training).  
 He has been a student... has  
 been in the army.

**GEORGE J. MERRILL**  
 U. S. M. A. (Training) of Marine.  
 Likes P. E. on ship with crew,  
 Little Symphony, and pop band.



**HERBERT KANNON, Ph.D.**  
 English.  
 Spelling, sentence sense, Shakespeare  
 and Shakespeare. Interested  
 in literary sports, writing and  
 politics.

faculty and  
administration

LITHIA NEW BORNEN, B.A.  
L.A. 1947  
For a nice-conscious student  
body.



LEO DIPHAM, B.S.  
L.A. 1948  
For 2nd of 1948 - or 3rd of  
1949 (he did 1948)

LEON H. BROWN,  
M.A. M.T.S. P.D. Edgewood  
Teacher in Central Park



LEON H. BROWN  
A.B., B.A., M.A.  
Assistant Librarian  
M.T.S. 1 in the 1940s in  
L.A.

LEON H. BROWN, B.S.  
M.A., P.D.  
Dept. of Music, Classical  
Languages  
Men's "trouble-shooter"



LEON H. BROWN, B.S.  
M.A., P.D.  
Dept. of Music, Classical  
Languages  
Men's "trouble-shooter"

LEON H. BROWN, B.A., T.D.  
Christianity, (Pastor)  
Our college pastor, a real friend  
and counselor.



LEON H. BROWN, B.A.  
Physical Education  
M.T.S. 1948

U. J. BROWN, M.A.  
L.A. 1948  
Knows what you mean "way  
back in the day" - Faculty  
member in 1948 and 1949



LEON H. BROWN, B.M.  
Music  
Endlessly energetic, Music,  
and not a little philosopher!

LEON H. BROWN, B.A.  
Women's Physical Education  
Club Manager  
Club trips with "Ma" are  
things to remember. And re-  
member she does with amateur  
movies.



LEON H. BROWN  
L.A. 1948  
Assistant Concert Master for Ta-  
cuma Philharmonic

LEON H. BROWN, B.M.  
Music  
Endlessly energetic, Music,  
and not a little philosopher!



KENNETH JACOBS  
Plant Manager  
Object of many an un-  
ganized manifesto.



VANESSA GREEN HOWARD  
Assistant Manager of Finance  
"Serious" PLC girls never  
get a study of business out  
in church.



MARION HANSON LITTLE, R.N.  
Assistant Charge Nurse  
A hand to hold the tremor  
down!

HELEN BROWNE  
Assistant to the Bookkeeper  
"Should I write out a receipt in  
full for your bill?"



ESTHER M. JOHNSON, II, M.  
Private Nurse  
She'll figure out what aches  
you sick. And with the best  
which makes you feel.

ANNE ELLIOTT  
Bookkeeper  
"It's a pleasure to pay my  
bill."



Mrs. ELEANOR PETERSON  
Assistant to the Bookkeeper  
Proud of this, manages a  
[unclear]

LORETTA HARRIS, II, A.  
Secretary to the President  
Holds you as a bombadier in  
her mouth.



ANNE STEIN, R.A.  
Secretary to the President, Office  
PLC 10 ... Public Address  
College ... This class  
for a number of years.

JANE THOMPSON JOHNSON  
Secretary to the Treasurer  
Knows the facts and figures  
about the PLC student body.



JANE THOMPSON JOHNSON  
Secretary to the Treasurer  
PLC 10 ... The public school  
system had a good teacher, and  
Dr. Hanger wanted a good sec-  
retary.



## associated student body

With "building" as a general theme for all activities of school life, the student body was quick to fall in line with a larger and more successful program of events than ever before. Under the direction of President LaVerne Linnerson, the student council, governing group of the student body, has been instrumental to directing various programs to successful conclusions through the course of the school year. It has also advised the various classes and organizations to function harmoniously.



PRESIDENT LINNERSON

The Community Chest Drive, Football Banquet, Red Cross Drive, Sea Carnival and May Day Festivities are a few of the outward evidences of the work of the council. The student body meetings are the culmination of many hours of debate and discussion which occurs behind the doors of the student body office. Throughout all the student council has worked for cooperation with the faculty through Dr. Haug, the council advisor, while bearing in mind the suggestions and wishes of the student body.

The council is presently attempting to inaugurate a new school signet ring and pin in order to further tradition. As a gift to the school, the student body decided to furnish the basketball baskets for the school's new Memorial Gymnasium.

Other student body officers during President Linnerson's year were vice-president Cassel Anderson; secretary, Melvin Olesch; treasurer, Robert Haug; and advertising manager, Wallace Larson. Class representatives of the council were Marilyn Pflueger, Freshman; Ralph Haugen, sophomore; Alton Hjelm, junior; and Herbert Nienstedt, senior.



Front row, l. to r.: G. Anderson, V. Hjelm, J. Linnerson. Back row, l. to r.: Nienstedt, Hjelm, K. Haugen, Haug, Olesch.



*student body  
calendar . . .*

**HOMECOMING (1)**  
October 18, 19, 20

**FOOTBALL BANQUET**  
December 13

**SAGA CARNIVAL (2,3,4)**  
May 7

**CAMPUS DAY (6)**  
April 29

**MAY DAY (4)**  
May 1

**SCHOOL PICNIC**  
May 19





*living stones*





Left to right: W. Jensen, treasurer; Holand, vice president; Alshouse, secretary; Nilstedt, ASB representative; G. Lohr, president

## *senior class*

In this year of construction at PLC another important job of building has been done. The character of forty-six seniors has been molded here under an appropriate slogan, "Building for Character."

Of this class of forty-six, there are sixteen receiving Bachelor of Arts Degrees in Liberal Arts. The remaining twenty-seven will graduate with a Bachelor of Arts in Education.

The senior class of 1947 has been led by Gerald Lohr, president. Other officers were Erling Holand, vice-president; Lorraine Alshouse, secretary; Reid Jensen, treasurer; Herbert Nilstedt, senior representative.

Some of the activities of the senior class were an ice skating party, a booth at the Suga Carnival, and a mixer which was jointly sponsored with the junior class.

**PEARL LORRAINE AKHURST**

*B. A. in Education*

Senior Class Secretary 4, D. E. G. President 3, Class Representative 4, W. A. A. 1, Ice Skating Club 2, 3, Campus Devotion 4, Cap and Gown 1. She keeps a sense of humor with her like smiling curls.



**KENNETH DONALD ANENSON**

*B. A. in Liberal Arts*

Football: Class President 1, Drama Club President 2, Football 1, 2, Chess 1, 2, 4, President 4, Alpha Psi Omega 4, Who's Who 4. "Without a long the Day Would Never End" and with a sense like Ken's we'll want the days are pretty short.



**OSWALD JEREMIAH BEE**

*B. A. in Liberal Arts*

Member of Christian College 4, Young Men's Christian Association 4, Phi Kappa Phi 4, Phi Kappa Phi Honor Society 4, Phi Kappa Phi Honor Society 4. Always thoughtful with light of heart in the smile. Always in possession of the number of people near him.



**WILLIAM HENRY BERLIN**

*B. A. in Liberal Arts*

Entered from University of Washington 4, Ski Club 4, Veterans Club 1. Long engaged, and then with the memory of a graduate.



**AJLA LILJA BOONILL**

*B. A. in Education*

Ministry Meet Staff 1, 4, Co. Editor 2, Editor 1, Staff Editor 4, A. W. S. Vice-President 4, Mission Society 1, 2, 3, 4, Vice-President 1, Who's Who 4, W. A. A. 1, 2, 3, 4, 5, 6, 7, 8, 9, 10, 11, 12, 13, 14, 15, 16, 17, 18, 19, 20, 21, 22, 23, 24, 25, 26, 27, 28, 29, 30, 31, 32, 33, 34, 35, 36, 37, 38, 39, 40, 41, 42, 43, 44, 45, 46, 47, 48, 49, 50, 51, 52, 53, 54, 55, 56, 57, 58, 59, 60, 61, 62, 63, 64, 65, 66, 67, 68, 69, 70, 71, 72, 73, 74, 75, 76, 77, 78, 79, 80, 81, 82, 83, 84, 85, 86, 87, 88, 89, 90, 91, 92, 93, 94, 95, 96, 97, 98, 99, 100. Speaks in evil, but she says, keeps her thoughts to herself.



**IRMA HELEN CLEARY**

*B. A. in Education*

Staff Editor 1, W. A. A. President 1, Senior Class Vice-President 1, A. W. S. Publicity Manager 1, L. D. E. 1, 2, 3, 4, 5, 6, 7, 8, 9, 10, 11, 12, 13, 14, 15, 16, 17, 18, 19, 20, 21, 22, 23, 24, 25, 26, 27, 28, 29, 30, 31, 32, 33, 34, 35, 36, 37, 38, 39, 40, 41, 42, 43, 44, 45, 46, 47, 48, 49, 50, 51, 52, 53, 54, 55, 56, 57, 58, 59, 60, 61, 62, 63, 64, 65, 66, 67, 68, 69, 70, 71, 72, 73, 74, 75, 76, 77, 78, 79, 80, 81, 82, 83, 84, 85, 86, 87, 88, 89, 90, 91, 92, 93, 94, 95, 96, 97, 98, 99, 100. Where does the boundary line between her and mischief?



**C  
L  
A  
S  
S  
O  
F  
1  
9  
1  
7**



**HARRY AXEL OSKANEN**

*B. A. in Education*

Football 1, Basketball 1, 2, 3, 4, 5, 6, 7, 8, 9, 10, 11, 12, 13, 14, 15, 16, 17, 18, 19, 20, 21, 22, 23, 24, 25, 26, 27, 28, 29, 30, 31, 32, 33, 34, 35, 36, 37, 38, 39, 40, 41, 42, 43, 44, 45, 46, 47, 48, 49, 50, 51, 52, 53, 54, 55, 56, 57, 58, 59, 60, 61, 62, 63, 64, 65, 66, 67, 68, 69, 70, 71, 72, 73, 74, 75, 76, 77, 78, 79, 80, 81, 82, 83, 84, 85, 86, 87, 88, 89, 90, 91, 92, 93, 94, 95, 96, 97, 98, 99, 100. He speaks out—breaks out suddenly—and fingers long.



**FREDDIE ALLAN FALLSTROM**

*B. A. in Education*

Football 1, 2, 3, 4, Letterman's Club 1, 2, 3, 4, Veterans Club 4, Phi Kappa Phi 4. Study in the eyes.



**EDVARD ARNE ENDERST MARKA**

*B. A. in Liberal Arts*

Entered from University of California 4, Tennis 4, Viking Club 4, DeWitt 4, Campus Devotion 4, President 4, Mission Society 4. He is the dignified and one of all with a smile.



**JOSEPH PHILIP HELCHERT**

*B. A. in Liberal Arts*

Chess 1, 2, German Club 1, 2, 3, Little Symphony 1, Mission Society 1, 2, 3, 4, Cabinet Devotion 1, 2, 3, 4, 5, 6, 7, 8, 9, 10, 11, 12, 13, 14, 15, 16, 17, 18, 19, 20, 21, 22, 23, 24, 25, 26, 27, 28, 29, 30, 31, 32, 33, 34, 35, 36, 37, 38, 39, 40, 41, 42, 43, 44, 45, 46, 47, 48, 49, 50, 51, 52, 53, 54, 55, 56, 57, 58, 59, 60, 61, 62, 63, 64, 65, 66, 67, 68, 69, 70, 71, 72, 73, 74, 75, 76, 77, 78, 79, 80, 81, 82, 83, 84, 85, 86, 87, 88, 89, 90, 91, 92, 93, 94, 95, 96, 97, 98, 99, 100. That's Totta.



**ABRAHAM LAWRENCE KOPP**

*B. A. in Liberal Arts*

Ministry Meet 1, 2, 3, 4, Staff Art Editor 1, 2, 3, 4, Alpha Psi Omega, Sophomore Class President 1, Letterman's Club, Towson Chairman 4, Who's Who 4. Finishes what he presides. Every day the reality side of life.



**ERLING INGVALD HOLAND**

*B. A. in Education*

Football 1, 2, 3, 4, Vice-President of Senior Class 4, President of Veterans Club 4, President of Letterman's Club 4, Who's Who 4, Towson. The sportsman in life and the life of the sport.



**MIRIAM ALICE FROST**

*B. A. in Education*

Choir 1, 2, 3, 4, Girls' Trio 1, 2, 4, Quartet 1, 2, All School Play 1, 2, A. S. B. Business Manager 2, Student Quartet 3, Why worry when you're dead?



**THEODORE ALEXANDER RUFER**

*B. A. in Education*

Football 1, 2, Track 1, 2, 4, Tawasi, Lions Society 2, Treasurer of Veterans' Club 4, Tall, dark and—oh, stocks, he's already married!



**ALBERT W. JENSEN**

*B. A. in Liberal Arts*

A Tacoma pastor—and good U.S. citizen.



**RUTH MARJORIE JENSEN**

*B. A. in Education*

Freshman Class President 1, Girls' Society 2, Choir 1, 2, 3, 4, President 2, Soloist 4, A. S. B. President 3, A. S. B. Cabinet 3, May Queen 4, May Day Attendant 1, Saga Business Manager 3, Who's Who 4, Cap and Gown 4, A. P. C. P. K. with Z-L.P.



**RICHARD CHESTER LANGTON**

*B. A. in Education*

Football Manager 1, 2, 3, 4, Golf 3, Tennis 3, Junior Class Vice-President 3, Lettermen's Club Secretary-Treasurer 3, Tawasi, Saga Sports Editor 3, Who's Who 4, Not only leaves no stones unturned, but puts them back in place.



**BENJAMIN ARTHUR LARSON, JR.**

*B. A. in Education*

Football 1, 2, 4, Track 1, 2, 4, A. S. B. Business Manager 2, Who's Who 3, Tawasi 3, Lettermen's Club 1, 2, 4, Saga Sports Editor 3, A merry heart, the Good Book says, does good like medicine. But the doctor bills are low at the Larsons!



**C  
L  
A  
S  
S  
O  
F  
1  
9  
4  
7**



**WALLACE HENRY LARSON**

*B. A. in Liberal Arts*

Entered from Luther College, Alpha Psi Omega 2, 4, A. S. B. Business Manager 4, Saga Carnival Chairman 4, Tawasi 4, Band 2, Plays 2, When he gets his nose to any grimestone—his shoulder to any wheel—watch out for the sparks.



**GERALD LEROY LASKA**

*B. A. in Liberal Arts*

1936 1, 2, 4, Tawasi 1, 3, 4, 5, 6, 7, 8, 9, 10, Lettermen's Club 1, 2, 3, 4, 5, 6, 7, 8, 9, 10, Senior Class President 4, The only 1936 Miss looks better on the class of H. A. is my R. N.



**LA VERNE WILLARD LINNERTSON**

*B. A. in Liberal Arts*

Entered from Bethany College, Lindbergh, Kansas 1, A. S. B. President 4, Mission Society President 3, Mixed Quartet 3, Choir 3, Who's Who 4, He keeps the Swedes from being a minority group at Pacific "Little Norway" Lutheran College.



**HERBERT HERMANN NIENSTEDT**

*B. A. in Liberal Arts*

A. S. B. Cabinet 1, 4, Dramatics 1, 2, Alpha Psi Omega 3, Tawasi 4, Choir 2, Orchestra 2, Saga Circulation Manager 4, 10. Use were a joke, he'd be his words 10.



**PHILLIP SPENCER NORBY**

*B. A. in Education*

Choir 2, 3, 4, Track 3, 4, Tennis 4, Alpha Psi Omega, Class Play, Vice-President of Veterans' Club 4, School bells and wedding bells ring for him this spring.



**HAROLD ALFRED SMEDLEY**

*B. A. in Liberal Arts*

Organ—and boy can't play from a book or a monkey.

**FERN ANITA NORMAN**

*B. A. in Education*

Choir 1, 2, 3, 4, Choir Soloist 1, 2, 3, 4, Girls' Scouting 1, Girls' Team 4, Alpha Psi Omega 2, 3, 4, Ski Club 4, Director of One-Act Play 4, All-College Play 3, 4. A singer that's sweet and low and mellow—Loche, you're a lucky fellow.



**KARL OLSEN**

*B. A. in Education*

Saga Advertising Manager 3, Tawani 2, 4, Veterans' Club 3, 4. A personality that glows without glowing.



**GERALDINE MARGUERITE OLSON**

*B. A. in Education*

Campus Devotionals President 2, Sophomore Class Treasurer 2, A.S.B. Treasurer 3, Choir 1, 2, 3, 4, President 1, L.S.A. Council 2. A sharp and ready wit, and cheerful as a kind heart.



**LOIS JEAN PENNINI**

*B. A. in Liberal Arts*

Entered from Bethany College 2, D.E.G. Cabinet 4, Saga Editorial Staff 1, French Club 4, L.D.R. 1, 3, 4, Finnish Cabinet 3, Campus Devotionals 2, 3, 4. Her words fall softly, in keeping with her character.



**WENDELL JOSE PIRHALLA**

*B. A. in Education*

Freshman Class President 1, Student Body 2, 3, 4, Baseball 3. As hard to catch as a water bug on a running watermelon in a water fight.



**HELEN LUTHE PETERSON**

*B. A. in Liberal Arts*

W.A.A. 1, 2, 3, 4, Secretary 4, Veterans Club 3, L.D.R. 1, 2, 3, 4, Editor of The Peterson Blast 100 for many.



C  
L  
S  
S  
O  
F  
I  
9  
I  
7



**PAUL EDWARD POLTORAK**

*B. A. in Liberal Arts*

Alpha Psi Omega 1, 2, 3, 4, Track 1, 2, 3, Latin Reciters 2, 3, Tawani 2, Navy Club 3. He laughs—and the world laughs with him.



**PER OVE PILE**

*B. A. in Liberal Arts*

O. C. President 1, Freshman Class President 1, Choir 1, 3, Basketball 1, 3, Finnish 1, 3, 4, Moving Journal 1, 2, 3, Football Manager 4. Give me and mine—obey would the world be, without a little quip?



**THEODORE JACOB RANTZ**

*B. A. in Liberal Arts*

John 1, 2, 3, L.S.A. Council President 4, Sophomore Class President 2, Student 1, 2, 3, Moving Journal 1, 2, 3, Editor 1, President, Student Society 2. May not look that way.



**AGNES ELIZABETH RIEHER**

*B. A. in Education*

Choir 1, 2, 3, 4, Girls' Team 1, 2, 4, Girls' Quartet 1, O. P. K. Cabinet 2, Finnish President 2, All-College Play 2, Attended College of the Pacific 3. "Why live your life at half-mast?" she queries.



**MARVIN STANLEY SHAW**

*B. A. in Education*

Moving Mast Associate Editor 2, 4, Co-Editor 4, Alpha Psi Omega 2, 3, 4, Tawani 4, Alumni Board 3, 4, Cast Director 3, 4, All-College Play 4, Who's Who 4. The cats not only walk on hot and try "hello," but evidently they sleep in the ball rooms.



**MURRAY ALF SKOED**

*B. A. in Education*

Choir 1, 2, 3, 4, Student 1, 2, 3, 4, Who's Who 4, Campus Devotionals 2, 3, 4, Tawani, Veterans 4. Drop the book on the last name to meet his specialty.





# sophomore class

Under the leadership of President Eleanor Hellbom, the sophomore class was guided through a busy year as M.C. Under officers chosen by the class were Vernon Berg, vice-president; June Apsal Simonson, first semester, and Jacqueline Klippa, second semester, secretary; Maynard Moon, treasurer, and Bud Thorp, sergeant-at-arms.

Prominent fall activity of the class was the Football Jamboree on October 18 and 19, including a football pep rally and parade before the Homecoming game. The sophomores were represented at the Saga Carnival by a Bingo stand. The final class-sponsored activity was a roller skating party at Redondo on March 21.

The sophomore class boasted an increase of forty-two new members over last year's census, meaning now a population of 149 persons. M.C.'s largest class, having reached its halfway mark in college, looks forward to a bright future in its remaining two years.

## Officers:

Hellbom, pres.; Moon, treas.; Berg, v. pres.; Klippa, sec.; Apsal, first semester; Thorp, sgt.-at-arms; Simonson, sec. 2nd semester.

First row: Wasieke, Reiman, Hellbom, Bruun, D. Eliason, Harshbarger, H. Jensen, Demow, Enwiler, Klippa, D. Stein, R. Hedlund, Pomeroy, R. Arnesen, Harbeck, Stangeland.

Second row: Cawston, A. Johnson, Mattens, Wulfsberg, Lora McAlister, Dren, D. Berg, V. Danielson, Mervin, Jorgensen, M. Skillested, T. Swartz, Pearson, S. Severson, Foss, M. LeRoy.

Third row: V. Berg, H. Larson, Purser, H. Carlson, Ross, Buschhoff, Charles, Kudo, Christopherian, E. Christmann, A. Gerstmann, Harrell.

Fourth row: Williamson, J. Jorgensen, Hillman, O. Ross, Korshoen, Barney LeRoy, Peder, Louisa, Sequist, Bud LeRoy, Collman, Sals, T. Lopez, Sandra, Jon Klipstein.

Fifth row: Gatten, J. Krumm, D'Andrea, Harold, Williams, Wille, Winje, J. Thompson, S. Arnesen, Andrew, K. Larson, Ellingsen, Sara, Krawbergt.





First row: Linn, Oger, Arada P. Anderson, A. Andersen, Browning, Brynestad, B. Blomberg, Arntson, Eames, Karl E. Eise, Sandvoll, Barb, D. Christiansen, Busch.

Second row: Eida, Dykstra, Fresse, Bachner, Cerantina, Dingfield, M. Fuhr, A. Gano, Dahlberg, Buegarboer, Bruffalt, Defferding, Dybdahl, H. Christiansen, G. Berg.

Third row: Kaing, Puh, Crumbach, Gifford, Garrison, Farris, K. Bloduff, Oson, Bertelsen, Botelanger, Dahl, Christen, L'haakey, Hake.

Fourth row: T. Damrud, Durwin, Fulwider, Corcoran, E. Erickson, Salomon, Fredrikson, Sivert.

Fifth row: A. Christopherum, Ruk, Cheryl D. Anderson, D. Akre, C. Christiansen, Abrahamson, E. Anderson, Gannon, R. Baird, D. Lamb, (w/over), Crupper, E. Lamb, Bremer, Gilliam, Thornhill, Mackinnon.



Officers:  
M. Pflueger, ASB rep.; Birkner, term; Jill Armentrout, L. Johnson, v. pres.; Linn, pres.; Carlwald, sec.  
Not pictured: J. Kylo, term; Ed. Armentrout, Brynestad, social chairman.

## freshman class

This year's freshman class was unique in that it is the largest class ever to have been enrolled at PLC. Members of this class totaled 390 students, 211 of them veterans, with men holding a ratio of more than 3 to 1 over the women.

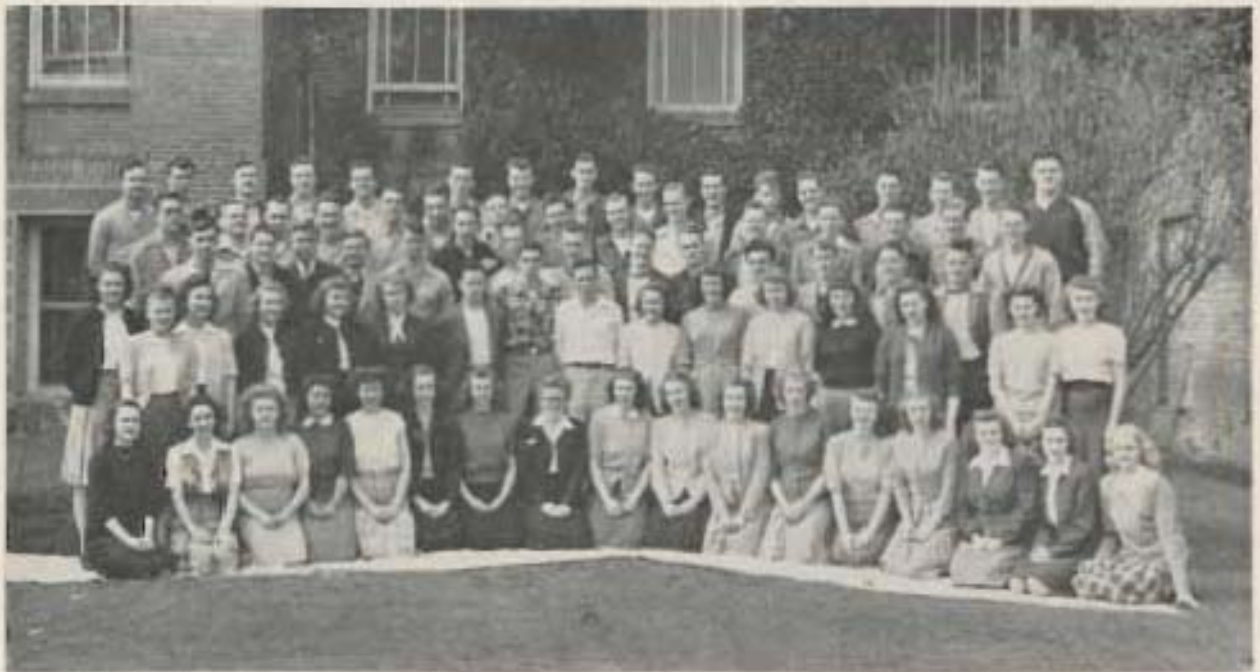
Somewhat bewildered in their new environment, the freshmen succeeded in organizing their group and electing officers to guide activities for the year. Holding the president's gavel was John Linn; Larry Hauge was vice-president; Bosh Carlwald, secretary; Jackie Kylo and Darrell Salern, treasurers for the first and second semester, respectively; Marilyn Pflueger, ASB representative; and Phyllis Brynestad, chairman of the activities committee. Professor Ramsdahl capably served as class advisor.

The frolic mixer, displaying a "Terroristic" theme, was the first student mixer of the year. The freshmen also sponsored the annual candlelight service after the Christmas banquet.

By the completion of the first semester this class had "felt its wings" and found its place in the PLC family.



**First row:** Moe, Little, Mykland, Langset, Hubble, E. Knutson, A. Olson, B. Heen, J. Infer, Nygaard, Hedwall, L. Larson, Nerheim, Heransen, A. Iversen, E. Haglund, Hale. **Second row:** G. Nelson, Kilmer, Loftness, Hellman, Mohund, Knutson, Kirkeide, MacDonald, D. Hanson, McKenna, L. Nelson, M. Hendrickson, L. Hauge, D. Johnson, Kreick, M. Jones. **Third row:** J. Huffman, G. Huffman, Maunson, D. Haglund, Knorr, Njuman, Legacy, Kravik, R. Olsen, Rosser, Nuthstein, L. Loper, Nylin, Leever. **Fourth row:** Marvik, Ludwick, S. Hewston, Keyes, L. Hedlund, Holyan, Kettle, J. Hewston, Hagen, Klett, M. Johnson, Nylander, J. Jacob. **Fifth row:** H. Jensen, B. Godland Hatley, Morris, Mason, H. Fallstrom, Ostrandrer, Guyot, Muse, Hagen, Kusencier, Helgeson, Loboda, W. Lyle, Hudgson, Mosman, N. Nelson, Lonn.



**First row:** Walter, Walter, Smith & Schuman, Ryan, A. Olson, J. Sach, C. Asmundson, Perry, Isomwaker, Robinson, Ross, Evangeline Ordahl, Stephenson, C. Rasmussen, Schwisow, Westerbeke. **Second row:** P. Sullis, N. Peterson, Puchner, Warr, Ostedal, O. Tierral, D. Pedersen, Sara, Schaefer, Rullom, Pappas, Sullw, M. P'Noyet, Thorne, H. Peterson, C. Ross. **Third row:** Saria, Warty, R. Olson, Williams, Watness, R. Wilhelms, A. Koen, H. Koen, Valerine, Ibra, Givrol, D. King, Wohlbeiter. **Fourth row:** D. Kler, Sheehand, Savola, H. Sahl, Finnan, Torrid, Schedler, G. Winky, Severoid, Tiedeman, Sobrik, Valora Steadman, Reed, P. Anderson, Mith. **Fifth row:** J. Thompson, M. Zier, Stoddard, Harold, Senoff, Torgerson, Salora, M. Ross, R. Pueler, D. P'ister, Kros, D. Olson, Perry, Webster, Suvven, P'raad.



Front row, l to r: Hubert Jensen, Bradie Shaw, Edith  
Back row, l to r: Linnerson, Arthur Larson, A. Larson.

## who's who

Ten PLC seniors were chosen for placement in the 1946-47 edition of WHO'S WHO AMONG STUDENTS IN AMERICAN UNIVERSITIES AND COLLEGES.

Students recommended by the faculty are selected by the Who's Who publication committee. Deciding factors are ability, past records, personal traits, leadership, practical qualities, contributions to extra-curricular activities and scholastic achievements.

Chosen this year were KENNETH ANDERSON, Choir of the West president, member of Alpha Psi Omega, former president of frosh class and Drama Society, member of Letterman's Club and Male Quartette; ALICE BRUDIE, Sage editor, AWS vice-president and past editor, associate editor and co editor of the Morning News; HARTMAN HOFF, Alpha Psi Omega chairman of Town Club, Sage III editor 1941-42, Morning News staff in 1943, '42, '43; ERICSON BLOOM, senior class vice president, Letterman's Club president, former Alpha Psi Omega president and Veterans' Club president, and varsity football for four years.

RUTH JENSEN was former president of Icelandic class, AWS, and Choir of the West, Junior student council representative, Sage assistant business manager, May Day attendant and member of Girls' Society; RICHARD LANGSTON, junior class vice president, member of Lane Society, football banquet committee for 1940, '41, '42, '43 and '44, and football manager for four years; ARTHUR LARSON, football for three years, Winsa champion in low and high hurdles, former member of Day Boys' Union, PLC Choir band, Sage Carnival chairman, ASB advertising commissioner and president of Letterman's Club.

LAVINIA LINNERSON is ASB president, former president of Music Society and member of Choir of the West; MARYAN SHAW, president of Alpha Psi Omega on Morning News staff since frosh days (past co-editor), 1946 Sage staff, Fall Play in 1941, Spring Play of 1942 and '46; HARRY SALON, outstanding soloist for PLC Choir, vice chairman of Town Club male quartette in freshman, and three year member of Student Club.

WHO'S WHO AMONG STUDENTS, published annually since 1914-15, is a book giving national recognition to deserving students, then also recommending successful students to the business and professional world and helping place many of them after graduation.





*doorways*





**First row:** Ofstedal, Purvis, Rieke, Hjeltn, Skilbred, M. Pflueger, Harbeck, Martens, R. Jensen, G. Olson, Norby, Root, R. Gulhaugen. **Second row:** Norman, Reider, Hopp, L. Tollefeldt, Pearson, Rostad, R. Towe, Iverson, L. Metzger, G. E. Gulhaugen, Reinan, Morgan. **Third row:** Carlson, Osterli, Gus Anderson, Valum, Skoug, Meyer, Prof. Malmu, Jorgensen, Harstad, Williamson, R. Bischoff, Watness, G. Linder. **Fourth row:** L. Severson, Sandvig, Soloos, A. Aakre, Thompson, R. Tollefeldt, G. Gano, A. Towe, R. Carlson, R. Johnson, Fyrbro, Anenson, M. Gulhaugen, Nicolai.

## *choir of the west*

With "California, Here We Come!" as their motto, the 1946-1947 Choir of the West set forth upon a successful year.

First appearance of the choir was at the cornerstone laying for the new Science Hall, on October 16. Following this, the choir sang its annual Homecoming Concert, and also appeared in connection with the Reformation Festivals in Tacoma and Seattle.

Outstanding endeavor of the season was the nineteen-day tour of Oregon and California. On the snowy afternoon of January 30 the choristers jammed their suitcases and "slid off" to Longview, Washington, for the first concert of the twentieth annual tour. High point of the trip was the performance of the choir at the keynote session of the International Augustana Luther League Convention in Los Angeles on February 12.

Later in the spring the choir made a short week-end tour, singing in Aberdeen, Wash.; Astoria, Ore.; Puget Island and Olympia, Wash.

Soloists for this year were Ruth Jensen, soprano; Anita Norman, alto; Rudolph Johnson, tenor; and Harry Soloos, bass. Officers were Kenneth Anenson, president; John Nicolai, vice-president; Grace Elaine Gulhaugen, secretary-treasurer.

Much credit for a successful season is due to Mr. Gunnar J. Malmu, much-liked director, and to Mrs. Walter E. Young, better known as "Ma," efficient business manager.





*little  
symphony*



First row: F. Alexander, Wallace, Hicks, Marie J. Smith, I. Alexander, Gustavik, J. L. Carlson.  
 Second row: Jorgensen, B. Blomquist, H. Christensen, L. Christensen, Folsom, J. Thomsen,  
 Evangeline Ahrens, Mikkelsen, Helen, Jean, Malin.

Despite Mr. Malmen's efforts to increase membership, the "Little Symphony" remained smaller than last year's orchestra. The orchestra, however, proved that good things can come in small packages and gave several creditable performances including a chapel concert early in the school year, May Day, and Commencement exercises. They also appeared with the P. C. Men's Chorus and the Norwegian Male Chorus of Tacoma in concert April 20.

With the increased enrollment this year, P. C. was able to reorganize its band. Although lacking uniforms, the band made a good showing and lent spirit and color to pep rallies and football and basketball games. Aside from these appearances the band gave a short concert for the Parkland Community Club and for the Parkland Junior High School.

First row: Prof. Malmen, Abrahamson, Mikkelsen, L. Rindfelde, E. Smith, N. Skiffred,  
 Evangeline Ahrens, H. Jensen, Schwanen, Stan. Second row: Valum, Fosse, Kuller,  
 V. Malin, L. Serensen, Nicolai, R. Olava Sulvik, C. Christensen, Satern.

*band*





G. GULHAUGEN  
Assistant Editor

H. NIENSTHEIT  
Circulation Manager

O. GUNN  
Advertising Manager

## saga

The spirit of construction, everywhere present at PLC, led to the theme, "Building," for this year's SAGA.

Holding the pencil of editorship was Alice Brude, editor, assisted by Grace Elaine Gulhaugen, assistant editor. Norrene Skilleb, art editor, Art Larson, sports editor; Swain Arneson, photography editor; Vero Fish and Elaine Exwiler, writers; Arleno Carles, faculty and administration; Herb Pilzger, women's sports; and Elaine Frone, snapshot center, all took part in the publication of the annual.

Despite greatly increased costs of publication, Business Manager Walt Kunschak skillfully kept the red and black sides of the ledger balanced. In this he was assisted by Herbert Nienseth, in charge of circulation, assisted by Vero Fish, and Gordon Gunn in charge of advertising. Marilyn Pilzger, Astor Hjeltn, Bonnie Hara, Aina Hara, Harold Hauger, Olga Soren, Ardith Olson, and Jiro Kordala helped.

Miss Anne Knudson advised the editorial staff; Miss Vera Berg was an adviser; and Mr. O. J. Stoen advised the business staff.

### EDITORIAL STAFF

Front row, l. to r.: Carles, H. Pilzger, Exwiler, N. Skilleb  
Back row, l. to r.: A. Larson, Arneson, Fish, Frone

### BUSINESS STAFF

Front row, l. to r.: O. Gunn, H. Hauger, A. Hara, A. Olson  
Back row, l. to r.: M. Pilzger, Hjeltn, Kordala, Fish, B. Hara





R. JOHNSON  
Editor, First Semester



A. BREDVOLD  
Co-Editor, Second Semester



M. SHAW  
Co-Editor, Second Semester



## mooring mast

Every silver Thursday the walls of the Board Printing Company rang with the clatter of the linotype making type for the *Mooring Mast*. Bending over the forms were the editors trying to fit three inches of type into two inches of space.

Ruth Johnson, who filled the editor's shoes at the beginning of the year, left them to Ardy Bredvold and Mary Shaw at the second semester. Betty Helman held the associate editor's place, being joined by Ruth Johnson in the spring.

One of the *Mooring Mast's* zests was Dick Weatherman, sports editor. Bigger losses to the paper occurred when Harry Hoff, PLC's No. 1 "Benchley," and Don Sloan, "sage of the sports page," who wrote the column, "Sloan's Laurels," graduated at the end of the first semester.

Caroling bacon was Mrs. Ruth Franck, whose individualistic hieroglyphics won't many an error and "covered a multitude of sins."

Professor O. J. Stora was business counselor. June Apland was business manager; John Nicolai, advertising manager; and Elaine Enwiller, circulation manager. Arleen Curdes became business manager when June Apland caught cupid-fever and was mailed.

On December 5 and 6, Ruth Johnson, Mary Shaw and June Apland attended a press conference at Bellfountain, sponsored by W. W. C. E. At this meeting ten colleges, including PLC formed the Northwest Intercollegiate Press Conference, which will meet twice annually.



A. CURDES, Bus. Mgr.  
J. NICOLAI, Adv. Mgr.  
E. ENWILLER, Circ. Editor

### EDITORIAL STAFF

FRONT ROW, L. TO R.: WILSON, HAGLUND, ROTH, BOWEN. BACK ROW,  
L. TO R.: RUSSELL, KIMBALL, WEATHERMAN, BRUCE, ANDERSON,  
P. 25-26-27

### BUSINESS STAFF

Left to right: Nicolai, G. Gann, Curdes, A. Gann, Enwiller.



# Religious Organizations



Front row, L to R: M. Gullhaugen, T. Reitz, Nilsdal. Back row, L to R: Mykland, Riche, CL Torstad, Xebra, Harbeck, Vase, G. Gullhaugen.

## *l. s. a. council*

Rather than one composite LSA organization on the campus, MLC has four religious groups and a coordinating council, which make up the Lutheran Student Association local. The council, composed of two representatives from each of the four groups and a faculty adviser, is the coordinating element.

This group meets regularly to discuss the problems confronting the religious organizations and to help them coordinate their activities on the campus.

Under the leadership of Ted Reitz, president; Charlotte Mykland, vice president; Jean Harbeck, secretary-treasurer; and Miss Anna Marc Nielsen, faculty adviser, a successful and active year was enjoyed by our religious groups.

The LSA sponsored a well-attended meeting in Luleaborg on October 26. LSA members gave good representation for MLC at the regional fall festival at Luleaborgs Camp at Coeur d'Alene, Idaho, on November 17, and also showed fine local representation at the regional spring conference at Colton, Oregon, on March 29. On April 1 the LSA sponsored Dr. Morris Wee, executive secretary for the national LSA as a campus speaker.

Under the guidance of the LSA council, joint meetings of the religious groups were held, with each group contributing to some portion of the program. Many similar activities are planned for the future.







*L. D. R.*

First row, l. to r.: A. Nielsen, Carmen Tove, N. Shilberd. Second row: L. Myrager, M. Johnson, M. Pflueger, L. Pennell, Rieke, Almhurst, O. Steira. Third row: Brownning, Loper, Mykland, J. Inger, Metze, Corlies, S. H. Vibe, Hagland.

The Lushwan Daughters of the Reformation on the campus has afforded opportunity for girls to further their religious life and to become living stones in the spiritual house of the L.D.R. The campus group works with the national, district, and local organizations.

Project for the year has been the raising of funds for literature for South American missions. A Christmas gift was sent to the Parkland Children's Home in Everett. At the annual Mother's Day tea in May, National Executive Secretary Aron Njaa was honored guest and speaker.

Under the faithful advisership of Mrs. J. P. Pflueger, the members enjoyed the monthly meetings in the homes of the faculty.

Officers for the year were Alice Kjerbo, president; Eva Clausen, vice-president; Ruth Tove, secretary; Noerne Shilberd, treasurer; and Betty Lou Rieke and Olga Torvord, L.S.A. representatives.



With student planned and presented programs, Campus Devotions met once a week for the purpose of devotional inspiration. Both day and dorm students took an active part in the work.

Officers for the first semester were Bob LeRoy, president; Silas Torvord, vice president; and Einar Oksedal, secretary-treasurer.

Holding office for the second semester were Harold Hauge, president; Dwight Bos, vice-president; and Blanche Kilmer, secretary-treasurer.

Charlotte Mykland and John Nicolai served as LSA representatives for the year, while Miss Blomquist was adviser for the group.

First row, l. to r.: Williamsen, Nerheim, Browning, R. Gulhaugen, O. Steira, Enwiler, Ruffcorn, Rieke, Almhurst, M. LeRoy, Bob LeRoy, Loper. Second row: Colburn, Kilmer, Etzel, Morgan, Rasmussen, Vinje, T. Metzger, Skoug, Meyer, Clausen, Sollie, J. Inger, E. Gerstmann, A. Gerstmann. Third row: Nicolai, Williams, Scheller, Sundvig, Aakre, Solosa, Colvard, Hauge, D. Bos, T. Reitz, T. Inger, Barney LeRoy, Schmidt, Holland, Brunner, Klapstein, Upton, Zellmer.



*campus devotions*

# Social and Service Organizations



Left to right: N. Skilbred, A. Kjesbu, Hellbaum, Roth, A. Hest, Brudic

## *associated women students*

Introducing the Associated Women Students — a combined group of all dormitory and day girls.

Activities for the year included the Big Sister Tea, where each freshman girl was given an upper classman big sister, thus affording all new girls an opportunity to become acquainted with both old students and new. Another AWS tea was held in connection with the annual May Day Festival, where future freshman girls were the guests.

During the year a dinner was held to select a fund for an AWS Scholarship to be awarded to one of the women students. An annual style show also aided in raising funds for this scholarship.

The AWS took charge of the sale of tuberculosis crosses this year. All proceeds were given to the local tuberculosis hospital.

Officers for the year were as follows: President, Anita Roth; vice-president, Alice Brudic; secretary, Alice Kjesbu; treasurer, Eleanor Hellbaum; chairman of social activities, Alona Hest; and publicity chairman, Norene Skilbred.



**First row:** Norman, Vinje, R. Gulhaugen, L. Metzger, E. Swartz, A. Andersen, Danielson, H. Christiansen, N. Norby, Roth, Gundersen, Densow, N. Skilbred, Bendle, Little. **Second row:** Ahrendt, G. Berg, Langset, Moe, Prochnow, N. Peterson, Hale, C. Olsen, Eide, Ivrick, Davidson, D. Berg, Purvis, Warneke, Hermesen, Peery, Nessvig, Wallace. **Third row:** Rugg, A. Iverson, Busch, Ofstedal, G. Johnson, Kenworthy, Eklson, Breton, Pearson, Stangeland, Esweller, Klippen, Dybdahl, A. Johnson, Ruffcorn, Foss, Hardman, R. Pfleger, Bieks, Hjus. **Fourth row:** Russell, Etzel, Arntsen, Mykland, Schwisow, Fries, Dren, Hedwall, P. Anderson, Savage, Wallen, O. Steiro, Y. Metzger, Tollick, Ramberg, Skoog. **Fifth row:** D. Christiansen, C. Rasin, Pomerenk, Esse, Rasmussen, Nerheim, Kilmer, Pappas, Brunn, MacAllister, Lea, Cassavant, Arnesen, Harbeck, Larson, Beyer, Jensen. **Sixth row:** D. Skilbred, Gibson, G. Nelson, Dykstra, J. Smith, Wulke-smith, E. Smith, Hottig, Towe, Meyer, Corles, Brodvoild, G. Gulhaugen, Haglund, Wigen, Hellmann, Reisan, Ross, Ordahl.

## *delta phi kappa*

Delta Phi Kappa is an organization of dormitory girls. Devotions were held each evening helping to bring cheer and good will to all.

Cora Gulhaugen served as president, and working with her were Edna Swartz, vice-president; Dorothy Moran, secretary; Selma Gundersen, treasurer; Romona Gundersen, social chairman; and Phyllis Nygaard, fin chief. The class representatives Miriam Hoff, Carol Koetzke, Mavis Dorgby Eklson, sophomore; and Alice Andersen, freshman, were part of the cabinet and also helped in making the organization a success.

Thanksgiving, Christmas and spring banquets were sponsored by the Delta Phi Kappa for the Boarding Club members. Decorating the school at Christmas and manning a food booth at the Sage Carnival were other projects of the Delta Phi Kappa this past school year.

## delta rho gamma

Led by President Alice Kjerfve, the Delta Rho Gamma had a happy and prosperous year. Vice-president Charlene Martens, Secretary Grace Walters, Social Secretary Margaret Johnson, and Treasurer Helen Erickson assisted the president with official duties.

Red letter dates on the DRG calendar were a Christmas party held Tuesday, December 17, which was highlighted by the bringing of gifts for the Day Room; a slumber party and an ice skating party held March 28; and a slumber party in late spring.

A highly successful experiment which augmented the DRG treasury was instituted. Three girls each week were chosen to clean the Day Room. The girls were requested to loan in a record of unexpected cleaning the DRG room, and the money they earned, which would have gone toward hiring an outside, was added to the DRG funds.

Miss Lillian Langemo, PLC library assistant, was adviser.

First row: M. Pflieger, Brynestad, B. Heen, Stephenson, A. Olson. Second row: Martens, Browning, Soffie, J. Inzer, Classen, G. Carlson, A. Kjesbu. Third row: S. Severson, Robinson, J. Adams, Morgan, G. Walters, Knutson. Fourth row: M. LeRoy, Blomelle, A. Heen, Thorsen, McLean, Bowen, Rasmussen. Fifth row: Hoyland, Pennini, Halthusen, M. Johnson, Erickson.





Front row, l. to r.: Einar, Esther Ordahl, Holund  
 Back row, l. to r.: E. Kyllä, E. Andra, D. Pedersen.

## *veterans' club*

In its short life the Veterans' Club at PUC has become a strong and well-organized group. Election results for the fall semester found Bod Thorp, president; Phillip Nohy, vice-president; Esther Ordahl, secretary; Eldon Kyllä, treasurer; Don D'Andrea, sergeant at arms; Professor Karl Weus, faculty advisor.

Under the guidance of Cliff Irving, master of ceremonies, the Vets' Social in November will be remembered as a well equipped performance.

High point of the year for the club was the presentation of Andor Foldes, famous Hungarian pianist, to a large crowd in the Packard Junior High School auditorium, January 26.

With the coming of the spring semester a new group of officers was elected to carry on the work of their predecessors. Elected were Erling Holand, president; Elaine Peterson, vice-president; Jean Frankton, secretary; Ted Inzer, treasurer and George Falkstrom, sergeant at arms.

A canteen booth by the Vets' Club added considerably to the success of the Saga Carnival.

With a total of 400 students the veterans made up about 1 per cent of the student body. The Vets' Club anticipates a bright and active future.

# Tawasi

- First row:**  
Kunichik, H. Hauge, R. Tors-  
vold & Larsen, Hauge.
- Second row:**  
Stolt, Erickson, K. Hauge, H.  
Pillinger, Nicolaisen, Halseth,  
Gjertsen.
- Third row:**  
J. J. Smith, Dr. Steyr, Ed. Hauge,  
W. H. Hauge.
- Fourth row:**  
M. G. Johnson, T. Tufte, H.  
Pillinger, A. Larsen, L. L. L. L.,  
R. Johnson.



Tawasi, a men's honorary service organization, resumed its rightful place among campus activities again this fall after a lapse of four years during which time its members were performing another type of service "Tawasi," which means "friendly competition," stands as a ready hand to get behind and help promote any student activity on the campus that might call for services.

Due to its late start in getting organized its activities have not been numerous this year. It did, however, perform a number of usual duties, the primary one being the ushering for and selling of tickets at the basketball games.

Officers for the first semester were chairman, Harry Hoff; vice-chairman, Harry Solos; and secretary, Robert Forness. During the second semester the club was led by Wali Kunichik as chairman, Harold Kluge as vice chairman, and Silas Torvold, secretary. Don Lowell J. Saxe was the advisor.



The Lettermen's Club was reorganized during the fall semester with the following officers being installed to lead the group: president, Erling Holand; vice-president, Don Sloan; secretary-treasurer, Glenn Neal; and sergeant-at-arms, Paul Polillo. Mary Harshman and Mary Tommervik were chosen as faculty advisers.

A drive to remove all foreign letters from the campus was sponsored by the club. An intramural basketball tournament in which twelve teams participated, was sponsored by this group during the winter, the winners being the "Meatpackers."

In January, Don Sloan, a mid-year graduate, was replaced by Elmer Peterson as vice-president. Glenn Neal withdrew from school and was replaced by "Fuzzy" Willis as the secretary-treasurer.

A benefit basketball game was conducted by the club and pitted the Meatpackers against the PLC "B" squad and the crowd-pleasing Ballard Boms against the Psychopalmans team.

Membership of the club doubled during the year and will continue to increase with baseball being added to our roster as a major sport. With this in mind the future of the Lettermen's Club appears very bright.



# lettermen's club

- Front row:**  
Haug, H. Hauge, W. Andren, An-  
drew, Peterson, Gjertsen,  
Gjertsen, Strang, Ed. Hauge, Knut.
- Second row:**  
A. Larsen, Erickson, Hauge,  
Stolt, Gjertsen, Fred, Hauge,  
M. H. Hauge, Fred G. Hauge,  
Stolt, Hauge.
- Back row:**  
Hauge, Hauge, Hauge,  
Knut, L. L. L. L., Hauge,  
Hauge, Hauge, Hauge, Hauge,  
Hauge, Hauge, Hauge, Hauge,  
Hauge.









L. to R.: Kunschak, Chilton, Kowitky, Niekirk, Shaw, H. Smith, Anderson, Norman, Nicotetti, Myers.

## alpha psi omega

During this year four one-act plays were presented by the Theta Psi cast, P. L. C.'s chapter of the national dramatic fraternity, Alpha Psi Omega. They included "Gray Bread," "The Man in the Bowler Hat," "Strange Road," and "Suppressed Desires."

In December the membership of the cast was increased when seven students were initiated.

These students earned enough points through appearances in and work on college productions to qualify for entrance. It has become the policy of the cast to go outside the group in search of new talent and, to that end, invite as many interested students as possible to gain enough points for admission.

Looking forward to the stage facilities promised in the new Student Union Building, Theta Psi plans call for increasingly active future seasons.

## debate and oratory

Under the able coaching of Miss Clara Chilson, the oratory club took a active place among activities this year with a record of absence from the campus scene. The question under consideration for 1946-47 college debating was — Resolved: Tax labor should be given a direct share in management of industry.

After playing host to students from the University of British Columbia, followed by two engagements with C. P. S. teams, P. L. C. debaters participated in a Pi Kappa Delta-sponsored tournament held on the C. P. S. campus February 22. To the climax came at Linfield College, McMinnville, Oregon, on February 26, March 1 and 2. The P. L. C. team for this annual event included Elaine Eowiller, Edna Haglund, and Jacqueline Stephenson; Walter Keschak, Al Nordeng, and Larry Haupt; Loren Kaulf, Lloyd Klevin, Harold Haupt, and Al Schiller; and Jess Borgardner and Ralph Haupt. A memorable event for all participants, the Linfield tournament served as an opportunity to meet students from schools of many states in the west.

In an oratorical contest January 23, Edwin Valonine won highest honors, with LaVerne Linnerson as runner-up and Phillip Nobby in third place. Gerald Ervin and LaVonne Linnerson represented P. L. C. in oratory at Linfield College, with Marylee Strickland and Dorcasjane Hubball appearing in interpretive contests. Honors from the Pacific tournament include LaVerne Linnerson placing third in men's oratory and Marylee Strickland winning second in interpretive reading.

### DEBATE

First row: Stephenson, Chilson, Eowiller, Haglund, Haupt, Schiller. Back row: Haupt, Nordeng, H. Haupt, Kunschak, Borgardner, Klevin.

### ORATORY

First row: Linnerson, Ervin, Chilson. Back row: S. Torrance, A. Kowitky, Barney Leroy, Kryn.



# Dramatic Activities

In addition to the major activities of the Music and Speech departments, students had the opportunity to appear either on Campus Radio Theatre or in several of the student plays. These activities were directed by Prof. Gunnar J. Mathis and Miss Clara J. Chason.

This year Campus Radio Theatre, sponsored by Tacoma City Light, carried the following programs for PLC: Homecoming Variety Show, Christmas concert by the Choir of the West, round table discussion on this year's debate subject, concert by the chorus, a radio play, and the final program of the year, a joint presentation by all the Tacoma schools known as the "Musical Jamboree." These programs were all coordinated by Mr. Arnold Benum, program director of radio station KMO.

Homecoming was the setting for two one-act plays, given in the old chapel, which were received by an enthusiastic audience. The program featured a drama, "Grey Bread" by Jean Marie Lathan, and a mystery comedy, "The Man in the Bowler Hat," by A. A. Milne. Students who dramatized "Grey Bread" were Ellen Bruun, Anita Nortsoo, Dana Jeanne Hedwall and Rasmus Gulhaugen. The cast for "The Man in the Bowler Hat" included Joe Hill, Jeannette Smith, Phil Norby, Elysse Crowston, Wes Hillman, Melvin Osterly and Cliff Ewing.

The Theta Pi chapter of Alpha Psi Omega presented Theatre Night in the Parkland Junior High gym, March 13, 1947. The program consisted of music by the Girls' Trio and Alice Stockton on the violin in addition to the plays, which were the well-known comedy take-off on psychoanalysis by Sigmund Freud, "Suppressed Desires," and a new, rather haunting drama of an Irish fishing village, "Strange Road," by John Huston.

Actors in "Suppressed Desires" were Marylee Strickland, Beverly Waller and Ross Nicholl. The play was under the student direction of Elaine Enwiler. The roles in "Strange Road" were interpreted by Eleanor Heilborn, Jeannette Smith, Ellen Bruun and Ralph Haugen. Howard Swartz was student director.



Top: "The Man in the Bowler Hat" Hill, Ewing, J. Smith, Hillman, Norby, Osterly, P. Smith, Crowston.

Center: "Grey Bread" Hedwall, Norman, Bruun.

Lower: Scenes from "Strange Road" and "Suppressed Desires."



# "On Borrowed Time"



Fantasy spotlighted the spring stage with Paul O'Brien's play, "On Borrowed Time," directed by Miss Clara Chisoo.



The conversational Pud was expertly played by David Sannerud, Parkland school student. His "Gracips" was portrayed by Howard Swartz, otherwise known as "The Beard." Anna Norman's huckle hole as "Granny" was superbly executed as was Mary Shaw's part as the cultured Mr. Brink, alias Deach. Demerria, the money conscious aunt, was enacted by Marylee Strickland and Marcia Giles, an attractive young lady on the premises, was Donajessie Hedwall. Ralph Haugen excelled as the soft spoken, be-dazzled Dr. Evans. The officious attorney, Pilbeam, was in the hands of Ross Birchhoff, while Vera Fink assumed the role of Mr. Grimes, the stage aviator attendant. Wes Hillman was the sheriff, and Walt Worley and Mahlon Reed completed the cast as the two workmen.



Committee chairman were as follows: advertising, Stan Williamson; business, Kessel Weberg; lighting, Paul Pfeleger; make-up, Elnor Melburn; properties, Joy Inzer; stage crew, Bob Crumbaugh; wardrobe, Elaine Enwiler; prompters, Pat Purvis and Elaine Enwiler.



Front row, L to r:  
Norman, Sannerud, H. Swartz,  
Hedwall

Back row, L to r:  
M. Shaw, Birchhoff, Haugen,  
Strickland, Giles, Hillman



*arenas*





### football record

September 28, 1946  
P. L. C. 26 St. Merice's 6

October 3, 1946  
M. L. C. 7 U. of W. "B" 13

October 13, 1946  
P. L. C. 14 Wilcworth 0

October 19, 1946  
P. L. C. 0 E. W. C. E. 0

November 2, 1946  
P. L. C. 20 C. W. C. E. 0

November 16, 1946  
P. L. C. 0 W. W. C. B. 0

November 22, 1946  
P. L. C. vs. Linfield (Snowed Out)

November 27, 1946  
P. L. C. 13 C. P. S. 7





COACH CLIFF OLSON

## Football

Shedding khakis and belt bottoms the Gladiators returned to the same life of gridiron warfare. Head Coach Olson was greeted by a squad of 85 men at or near his initial call for the fall season. At a distinct disadvantage for lack of football gear, Coach Olson spent months rounding the squad into physical condition and at various hunting up pads, pants, headsets and gloves.

With a nucleus of returning lettermen which included Paul Holilla, Dan W. Andrea, "Pete" Peterson, Erling Holand, Frank Spear and many others, the coaching staff began molding a winning combination. Head Coach Olson was ably assisted by Line Coach George Falkstrom and Backfield Coaches Merv Tommervik and Merv Harshman, the latter two dividing their time between pro football and coaching.

Plagued by injuries to key men, the Lions were unable to recapture the fighting spirit that led them to Wisco titles in previous years. As the record stands the team won three last years and tied one, but the number of all-WISCO team members points to the fact that P. L. C.

Managers: R. Larson, Phil. Missing; Langton



TOMMENVIK  
FALKSTROM  
HARSHMAN





held a potent ball club. Four men were honored by selection to the all WSNCO first team, and three to the second team. The first team winners were Paul Polillo, end; Elmer "Pete" Peterson, guard; Don D'Andrea, center; and Frank Spear, back. Second team selections were Jack Guyot, back; Eldon Kyllö, tackle; and Erling Holand, guard.



Front row, l to r: Prond, Carbone, Pavia, Sloan, Peterson, Blair, Korsboen, Sarvela, Cementina, M. Johnson, Dorothy, Hoskins, Nojd, Danielson, Penhale, Theno. **Second row:** Weathermon, Larson, Griffith, Andrew, Hagen, Sutich, Neal, Perrault, Holand, Carlson, Rosin, Falk, Bolton, Strandness, McKanna, E. Cook, Jurkovich, Nylander, Gabrielsen, Mgr. Pild. **Third row:** D. Cook, Swartz, Hauge, Guyot, Ostrander, Gorud, Hewston, Geiger, England, Strenge, Spear, Rose, Lindwick, Furseth, Keyes, Johnston, Kauth, Bratlie, Wimer. **Back row:** Ulrich, Polillo, D'Andrea, Shonberg, Pate, Garner, D. Loete, Kyllö, Gano, C. Loete, Gunderson, Payne, Blades, Fallstrom, Sturm, Hanson, Mills, Coaches Olson, Tummervik, Fallstrom.

Leaving only five lettermen by graduation leaves Olson with a healthy outlook for the '47-'48 season. With the potent talents shown by freshmen Guyot, Andrew, Weathermon, Gorud, Prond, Fallstrom, Blair, Strandness and others, coupled with the old reliables Peterson, D'Andrea, Kyllö, Spear, and Bratlie—the Gladiators should prove to be a great killer.



### P. L. C. 26. ST. MARIN'S 6

Departing from their usual razzle-dazzle passing attack, the Lutes employed sheer power to dump the Menges in the Winco League opener played at Sierra Field in Olympia. Frankie Sinclair, Little All-American, passed brilliantly for the only St. Martin's score. Jack Brattle, Frank Spear, and Jack Coyne were outstanding for the home team.



### P. L. C. 7. U. OF W. "B" TEAM 13

Among the hardest charging runners on their schedule, the Olsonmen bowed to the powerful Husky "Pups" in the Stadium Bowl. Tommy Hodson gathered in Frank Spear's pass for the lone Lute tally. Eric Bob Andrew's stellar play in this contest earned him a starting berth on the eleven.



### P. L. C. 12. WHITWORTH 0

In their second Winco League appearance, the Lathropes traveled to Spokane to tangle with the Whitworth gridsters and emerged with a 12-0 victory. Halfback Duane Rose's lineplunging and Spear's quick-ticking were highlights of the win over the Pirates.



Left, top to bottom: Hodson, Pollin, Strandness, Carlson, Rose, Peterson.

Right, top to bottom: Kyle, Brattle, Andrew, Louie, Smith, McKenna.



### P. I. C. O. E. W. C. E. 20

Playing in a sea of mud in the Tacoma Stadium, the Cascades eleven barely earned a victory in their homecoming game after pushing the Savages all over the gridiron. Defensive Donor Blair tore through the Cherry forward wall to the three-yard line only to have the gain nullified by a clipping break. Bright spot of the otherwise damp evening was the hard charging Late line which dominated the entire four quarters of play.



### P. I. C. 20. C. W. C. E. 27

In the crucial game of the Willou Conference the Parkland gridiron came out on the short end of a tight 27-20 war. The Wildcats, led by L. C. and Jim Cambody, were hard pressed throughout the game, but they rallied in the closing minutes to get them the nod, and the league leadership.

### P. L. C. U. W. W. C. E. 9

Hard hit by the loss of Paul Spier and by the inspired Viking lineemen, the Clats were taken into camp in the tone of 9-0 at Western's homecoming game at Beilington. The line offensive machidery was ragged, and in the afternoon wore on, the defensive play was also spotty.

Left, top to bottom: Evans, Howard, Seeger, Hagen, Follen, Orr, Sloan.  
Right, top to bottom: D'Aquila, Slavin, Helms, Larson, Proud, Pate.



OSTRANDER



BLAIR



GUYOT



Co-Captains: Peterson, D'Andrea



Inspirational Winner: E. Holand

P.L.C. 13, C.P.S. 7

Behind a formidable front wall that had the Logger forces reeling through the contest the Gladiators of Pacific Lutheran College toppled the College of Puget Sound 13-7 in their final game of the season. Big Nerra Sinner, Luke Lullbark, scored both touchdowns on straight power plays through the middle. The Lutheran linemen proved they could take it by holding the North-enders for down on the two-yard line. The best all-round performance of the year.





### *basketball record 1946-47*

Dec. 14	C.P.S. 34 - P.L.C. 33
Dec. 21	U.B.C. 76 - P.L.C. 60
Dec. 27	U.B.C. 51 - P.L.C. 34
Dec. 28	U.B.C. 50 - P.L.C. 50
Jan. 11	W.W.C.R. 29 - P.L.C. 41
Jan. 17	Whitworth 46 - P.L.C. 35
Jan. 18	K.W.C.R. 41 - P.L.C. 36
Jan. 20	Gonzaga 57 - P.L.C. 37
Jan. 22	C.P.S. 35 - P.L.C. 50
Jan. 25	W.W.C.R. 50 - P.L.C. 51
Jan. 28	St. Martin's 35 - P.L.C. 34
Feb. 1	St. Martin's 44 - P.L.C. 45
Feb. 7	Gonzaga 45 - P.L.C. 40
Feb. 8	Smith College 34 - P.L.C. 43
Feb. 11	C.W.C.R. 43 - P.L.C. 43
Feb. 10	C.P.S. 18 - P.L.C. 40
Feb. 20	C.W.C.R. 54 - P.L.C. 45
Feb. 22	Smith College 64 - P.L.C. 75
Feb. 28	K.W.C.R. 67 - P.L.C. 65
Mar. 1	Whitworth 32 - P.L.C. 65
Mar. 4	C.I.B. 48 - P.L.C. 41



# Basketball



COACH HARSHMAN



MANAGER HIRSCHOPF

With the advent of the 1946-47 basketball season, the local fans looked forward to an interesting and hard playing season. With veterans Ernie "Cramps" Perrault and Fuzzy Willis as a nucleus, Coach Marv Harshman went to work building his squad. Stellar work in the pre-season games won places on the starting five for Harry McLaughlin, brother Willie McLaughlin and Vern Morris.

In the pre-season practice games against the junior colleges of Washington the team piled up a record of seven wins and no losses. Harry McLaughlin looked impressive in all of these games, dunking shots from any place on the floor. Ernie Perrault and Willie McLaughlin with their ball-handling also caught the spectators' attention.

The basketweavers were plagued with injuries and sickness throughout the season but managed to come through with a third place in the WINCO standings. The outstanding work of Cammie Turman, Ross, Kaath and others kept the team up in the running when the starting five were out because of injuries.

National recognition was gained by Harry McLaughlin for his scoring record. In twenty-nine games, he scored 494 points, which placed him seventh in the nation. He was also chosen to the first team of the All-WINCO team.

With the loss of only one man, Ernie Perrault, the outlook for the '47-'48 season is good. Returning lettermen will include Harry and Willie McLaughlin, Vern Morris, Fuzzy Willis, Ted Kaath, Jim Turman, Ed Cammie,



Front row:  
Rev. Dorothy, Gamon,  
Hickman, Gunderson,  
Chick

Back row:  
Mr. Hirschopf, Turman,  
Willis, Morris, H. Mc-  
Laughlin, Kaath, Mor-  
ris, Coach Harshman.



and others. With a normal influx of fresh blood into the squad should wind up at the team to deal in the WINCO League.

### CITY SERIES

With the City College Crown riding its rim Loggers' fans, the Lutes held high hopes of snatching the crown back into familiar territory. The initial tilt on December 14 proved to be an eye opener to casual fans. With Coach John Heinrich pointing to this game, after a mediocre pre-season record, the Loggers commenced chopping the Glads down. Taking the opener by the reins of 36 to 33 the Woodmen used their height and speed to advantage. Bill Sweeney being the spark that set off the fire. Outstanding for the Lutes were Ernie Perrault and Harry McLaughlin.

The next three games of the home and home series were much closer and hotly contested throughout the Loggers winning all four games to carry the series and retain the city crown.

### U. B. C. SERIES

Facing the strong Thunder birds from Bristol Columbia in their non-league game the Lutheran Hoopsters came out on 12th long end, winning 17th decisively and dropping one. The highly-touted Birdmen took the first game on their home court by a 74 to 60 score, while the Lutes scored two wins by scores of 54 to 51, and 56 to 52. Outstanding for the visitors were Kermod, Haas and Webber while Ted Kauch came up with a stellar job at the pivot plus replacing Harry McLaughlin.

### CONZAGA SERIES

Breaking into the WINCO League schedule the Zags from east of the mountains handed the Lutes their worst defeat of the season, 37 to 17. In the highly-contested return game played in the Social Armory the Zags eked out a 45 to 40 victory in an overtime game.

### WINCO LEAGUE GAMES

The Glads began opened their WINCO League battles with a victory



Top left to bottom left: Morris, Willie, McLaughlin, Perrault, Gannon, Turman, Kauch, Rose, Mills, Dorothy, Ulrich.





GUNDERSON

BACKMAN

over the Vikings from W.W.C.E. in Bellingham. This was definitely not the Western boys year, and they were down 41 to 26.

On their first road trip the Lutes managed to break out beating Whitworth 56 to 40, and losing to Cheney 16 to 41. Throwing a scare into the Eastern ball club, the Lutes led by ten five minutes when their attack bogged down and the Choseymers rallied to take the game.

After losing three games in a row the Lutes were determined to break into the win column again. This time the hapless Vikings stood up to the favored Glads, but the game ended favoring the Lutes 51 to 50.

Meeting their ancient rivals from St. Marston's for the first time this year the Lutes looked good in defeating the Rangers 58 to 55. Ernie Pussant spotted the Norsemen into scoring off a last minute rally by the Rangers. In the return tilt on the Parkland court the Rangers scored a major upset and won 64 to 49.

Continuing their downward tumble the Lutes traveled to Seattle to suffer another stinging by Seattle College, 54 to 47. Still trying to enter the win column the Parklanders traveled to Ellensburg to engage the then league-leading Central Washington Wildcats. The Lutes threw another big score into the Wildcats by forcing the play all the way and making Nicholson's boys work for their 49 to 52 victory.

After taking a dose one to the Wildcats the Lutesans battled them all the way in the return game on the Parkland floor. Although highly touted scoring players for Ellensburg, Nicholson and Peterson, were held down, the Lutes suffered another defeat 14 to 45.

On Washington's Birthday the Gladiators celebrated by scalping the Seattle College Indians 75 to 54. Eastern Washington's WINCO League champs on their last road trip walked over the Lutes 57 to 46 with the big game of George Giblehouse and by Leifer firing from all angles and twisting their shots.

In their last appearance of the season the Gladiators defeated the Whitworth Hawks 65 to 52 with Harry McLaughlin scoring 26 points and shattering the WINCO League scoring record.

Coach Mary Tostmark took a football for a basketball long enough during the coach's season to come up with a fiery "B" squad. During this, its freshman season, the team gave a chance for more men to play basketball and to learn the style of play expected of them. Not only is the "B" squad a feeder squad for the Varsity but it also has a schedule of its own. Outstanding players were Ralph "Lefty" Gunderson, Burt Beckman, Jim Mills, Chuck Smith, "Red" Hasky and others.



Front row: G. Hasky, Hasky, Aronson, S. Kenda.  
Back row: Schaler, S. Hasky, Hooge, Smith, Falk, Mar. Anderson.



# Spring Sports

## baseball



COACH TOMMERVIK

America's favorite spring and summer sport has come back to the P. L. C. campus, and with its return many ambitious ball players have lined up around the campus. Coach Merv Tommervik was greeted by fifty candidates at the initial tryout held at Harmon playground.

The lack of facilities at school has left the team at a disadvantage. Riding into cars each day, the squad takes off for their daily practice. At the time of writing, the only games played were a doubleheader against Seattle College. The boys showed up fairly well considering the lack of practice. The outlook for the season was quite good.

With games fixed against C. P. S. and the Western half of the WINCO League, the team faced a heavy schedule. The winner of the Western half was to play off with the Eastern winner to decide the WINCO champion.

Competition for positions on the starting line was keen and Coach Tommervik demanded the fact that only nine men could play at one time. The pitching staff consisted of Allen, Salton, Senior, Garner, and Lockwood, while Rose and Falk backed up the pitchers behind the plate. Slated to be on a right infield were Smith 2b, Brath, or England 2b, Morris ss, and Hatley 3b. The outfield was formed by Carlson, Blad and Hinrichs.



MGR. KORSHOEN



Front row: Hinrichs, Blad, Rose, Smith, Hazen, Falk, England, Brath.  
 Back row: Coach Tommervik, Morris, Carlson, Allen, Hatley, Lockwood, Garner,  
 Salton, Senior, Mgr. Korsboen.

## golf and tennis



Gabrielsen, Fuhr, Stewart, Marvik

The two main sports of the spring season started slowly but showed signs of intense progress. The sports were both under the coaching of Coach Olson. The golf team has been having a mediocre season this spring, having carded only one win at present time. The interest in the golf team has been intense this year and many have been out slugging that elusive white ball around. Positions for this year's team were chosen through competitive matches and were held by the Jaech brothers, McCough, Thompson, Gannon, Walters, and Dunn.

Facing some of the strongest competition in the Northwest the three diggers have carded some sixling scores but have remained on the long end of the wrong. Coach Olson has scheduled two matches for the team, providing a busy time for the pot chasers.

Front row: W. Jaech, J. Jaech, Dunn.  
Back row: Thompson, Gannon, Walters, McCough.

At press time the tennis team had been practicing for two weeks but as yet had not played any matches. Coach Olson picked the first five men by a ladder elimination. The first five are Nate Fuhr, veteran of several tennis teams; Luther Gabrielsen, tall, rangy netman; Knud Aune, Norway's popular addition to the state tennis squad; and two Tacoma boys, Erling Marvik and Chuck Stewart.

The team is preparing toward the city team with C. P. S. and also to the WINCO conference championship. With continued practice the team should shape up into a fine competitive team.



## track



With the return of track to the limelight as a major sport, the Lake cindersmen have turned out with renewed interest. With veterans such as Gerry Laker, Ted Juler, Tommy Hoobla, and Art Larson leading the way, interest has been stirred up among the lower classmen in the vicinity of Aljona.

After four years of deterioration the track was in very poor shape for a busy season, but its reconditioning has gone on and at this time the track has rounded into fair shape.

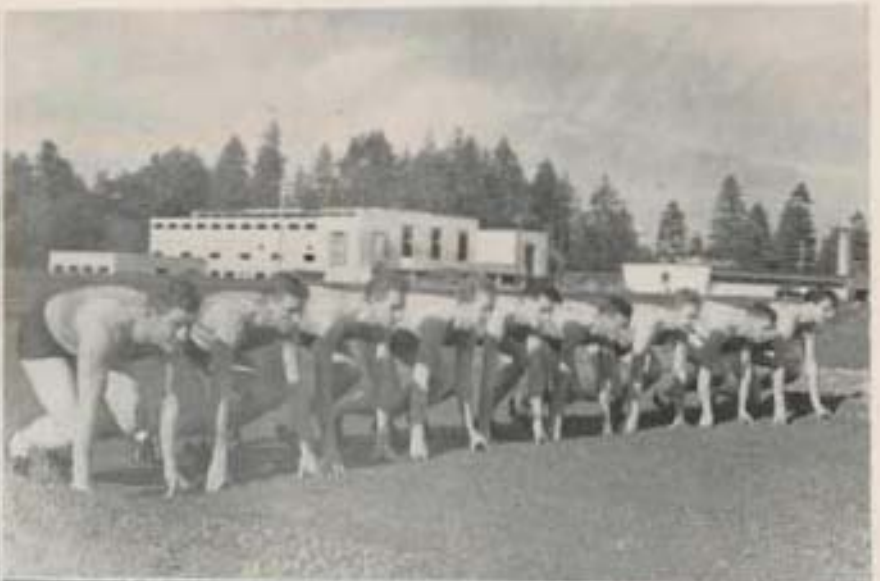
Pointing toward the Conference meet on May 23-24, Coach Marvel Hershman had the cindersmen bearing down rightly. A heavy schedule was planned preceding the Conference meet and should have proved ample training ground for the Lake athletes.



Front row: Mer. Anderson, Sammie Ulmer, Larson, Hendon, Schmidt, Schuler, Vink, Cook, Sprule. Back row: Larson, Leroy, Juler, Andrew, Hannon, Hershman, Hooge, Kimmons, Birhoff, Henson, S. Esker, Lopez, Mulbach, Mason, Coach Hershman

At press time the team had completed two meets. The first, a quadrangular meet with C. P. S., St. Martin's, and Seattle College, resulted in C. P. S. coming out on top with 58 1/2 points while the Lutes garnered second honors with 44 1/2 points. In the dual meet the Loggers again nudged out the Glads, 69 to 62.

Led by such fresh finds as Harry McDoughlin in the high jump and javelin, Everett Cook and Del Schaefer, dashes, and Grant Huffman, distances, the Lutes are rounding out into a tough-to-beat track team.



## *intramural sports*



Front row: Polillo, Holland, Peterson, Jackson, Ich.  
Back row: Kjillo, Carbowe, McAnulsen, Laete, Urallu.

The intramural sports program, which is handled by the Lettermen's Club, started with a hotly contested basketball series. President Holland of the Lettermen's Club was in charge of the arrangements. All games were played in the Parkland gym on Tuesdays and Thursdays. The program gave a chance to all men in the school to participate in a winter sport.

Divided into two leagues this year the three top teams in each league played out to determine the champion. The Mike Packera, consisting of the best trust among the football players, retained the crown again this year. Led by Edwig Holland, the Packera turned in smooth games to defeat all opposition. Among the outstanding players in the league were Polillo, Brattin, Loete, Waldo Elefson, Erickson, Sgren.

Plans are being drawn up for softball games during the spring. With the return to school of more lettermen and with the new gym the intramural program has possibilities of expanding in all sports, both outdoor and indoor.

## *spring football*



# Women's Sports



Davidson, J. Harshman, Young, Roth, R. Pilgrayer

## women's athletic association

Among the most active groups on the campus is the W. A. A., which is composed of all the girls interested in sports and the betterment of women's athletics at P. L. C. The association's goal is to foster good health, sportsmanship and leadership. Definite traits of leadership were apparent in the members elected to the executive board. Under the supervision of Mrs. Rhoda Young, this board was composed of Ruth Pilgrayer, president; Myrtle Davidson, vice president; JoAnne Harshman, secretary; and Anita Roth, treasurer; and the sports heads: Edna Swartz, basketball; Selma Gusterson, baseball; Patti Purvis, ice and roller skating;

Charlene Martens, bowling; Catherine Vandell, horseshoes and horse-back riding; Dorothy Skilbred, hiking and golfing; and Osoby Elefson, tennis and swimming.

A thrill for Freshman girls who turn out for sports is receiving the busy ye athletic award—a chenille letter which indicates they are letter-women of P. L. C. Sophomores receive a pin and Juniors and Seniors are presented with a chevron to be added to the pin. To receive an award the girl must earn 350 points. These are made by turning out for the two major sports, basketball and baseball, each giving 100 points. The individual sports, each of which give

First row: Laurel, Kauberkel, Rygg, Hermoen, Kinnertly, Davidson, Myrtle Davidson, S. Gusterson, T. Swartz, D. Skilbred, R. Pilgrayer, Blanche Arntsen, Wigren  
Second row: D. Thorsent, Perry, Selma Swartz, Freese, L. Tullfeldt, Hrolvold, Lovell, B. Helu, H. Peterson, Vandell, O. Elefson, C. Olsen, Bjorklund, I. Smith, Solha, Hovausen





PATRICIA PERKINS  
In and Out Roller Skating



EDNA SWARTZ  
Tennis



CHARLOTTE MATTHEWS  
Bowling

fifty points, are hiking, golf, tennis, horse back riding, ice and roller skating, bowling and home shoe pitching. At the end of the year the points are tallied and turned in to the council to be recorded for awarding awards. An annual W. A. A. party is held, at which time the awards are presented and new officers installed.

In working for their letters the girls enjoy many hours of fun and frolic which are marked with keen competition in the tournaments. The basketball season is highlighted by two All-Six teams which are chosen from all the teams in the tournament. A thrilling game is enjoyed by all.

To develop the skill of prospective pro golfers and others who try just for fun, the W. A. A. sponsored a "putting green" at the annual Sage Carnival. The club also sponsored a roller and ice skating party, which were very successful.

Rounding out the season, the girls had a cruise on the Sound and a typical good time was enjoyed by everyone attending.

IMMOGILY ERFSON  
Tennis and Squash



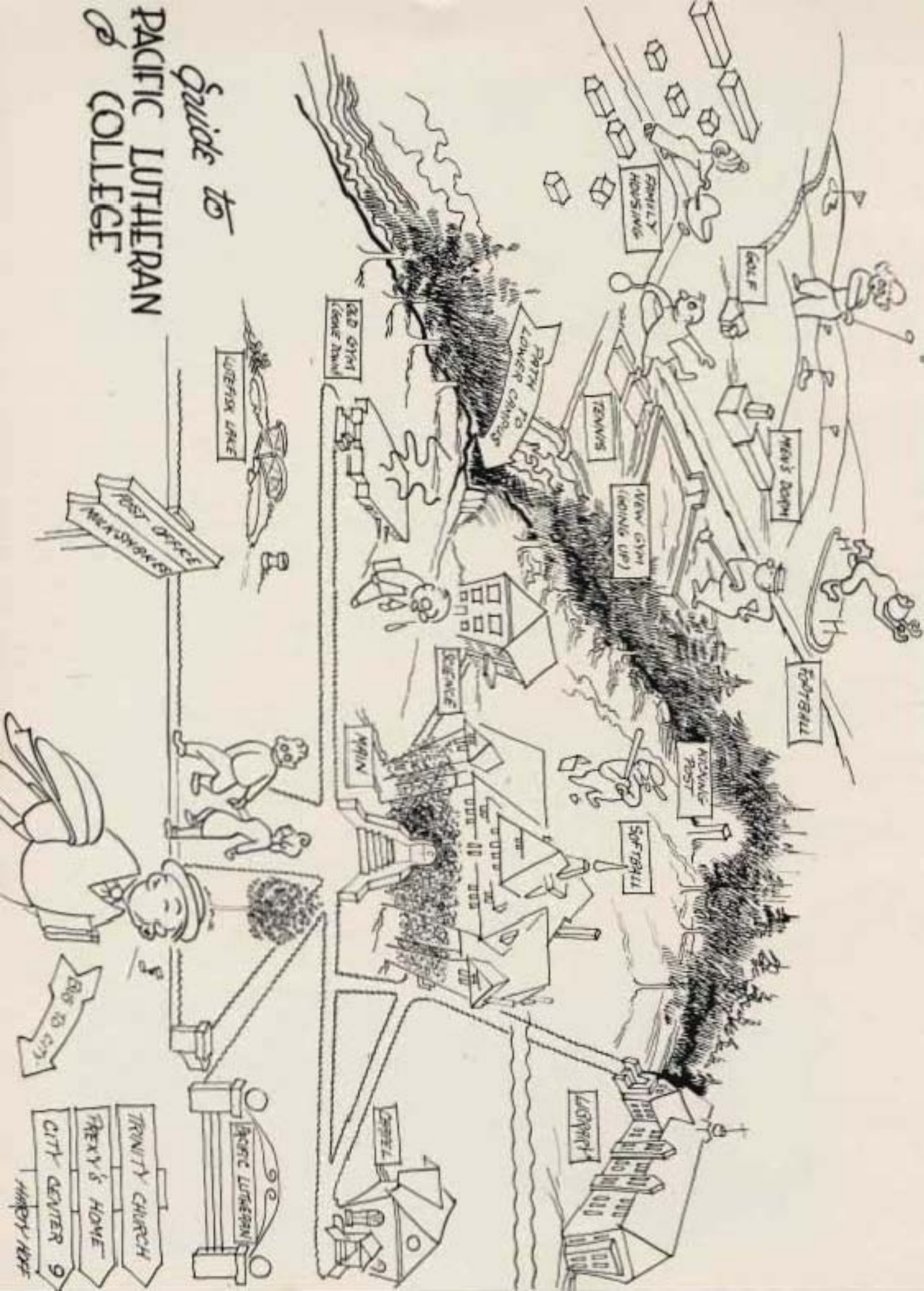
CATHERINE VANDELL  
Horseshoes, Horseshoe Kicker



IMMOGILY SKIFFERED  
Hiking and Skiing



*Guide to*  
**PACIFIC LUTHERAN  
 COLLEGE**







*rumpus rooms*



# may day



QUEEN RUTH I

On May Day this year, **Queen Ruth Jensen** was crowned ruler of the spring festivities by **Mr. A. A. Mydland** of **Utsiqva**. Her attendants were **Cetty Olson** and **Lorraine Ahlborn**, seniors; **Betty Lou Kiebe** and **Anne's Bredvold**, juniors; **Dorothy Ekstrom** and **Jackie Klippo**, sophomores; and **Margaret Eide** and **Beth Crosswald**, freshmen. The little people were **Dean Johnson**,

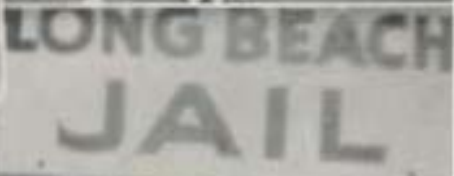
**crowner**; **Kathleen Wiles** and **Priscilla Pedersen**, **flower girls**; and **Judy Johnson**, **train bearer**. **Student Body Press** **LeVerne Linnestad** read the official **May Day** proclamation, announcing the **holiday of spring**.

The queen and her court were the honored guests, together with visiting high school girls, at the **AWB tea** held after the coronation.





- 1. Kono Lani the 1st prize - K. M. H. H.
- 2. Kathleen M. M. 2nd prize - M. M. M.
- 3. The Thimber 3rd prize - K. M. H. H.
- 4. The Hanner's Edge
- 5. Hinch
- 6. ... H. H.
- 7. "Julius" H. H.
- 8. H. H. H. in the Hall
- 9. L. L. L.
- 10. There is our local school
- 11. H. H. H. H. H.
- 12. H. H. H. H. H.
- 13. H. H. H. H. H.
- 14. H. H. H. H. H.
- 15. H. H. H. H. H.
- 16. H. H. H. H. H.





1. Well, I'll be shovelling off now.
2. What a cool!
3. What! a girl!
4. Here's whom we find as trouble!
5. Guy Guy-into
6. The Republicans' choice
7. The's choice
8. Kinky was here
9. I'm going to work
10. Don't you believe it!
11. Our boy Roy.
12. I'm not Delores
13. He's not laughing
14. Sherlock's Huhn
15. How's the weatherman, Helen?
16. \_\_\_\_\_
17. Mom's the girl to take just
18. Winter Wonderland
19. Putting the cold shoulder
20. Why would you not say



- 1. Porters via Strickland
- 2. Menorable Mamma!
- 3. What a view!
- 4. Ski Steps
- 5. Thurd his Home Ranch n Marvellous
- 6. Lionerson on duty
- 8. Stumped!
- 9. Our favorite
- 10. Future athlete
- 11. Lucky Ted!
- 12. The Pilgrims 1911
- 13. Lark Link, was fish
- 14. Big Time
- 15. Friends of Youth
- 16. The one way
- 17. Where are some black cats, gals?





*class of 196--*

- 1. David Warren Gibsonley
- 2. Richard Holand
- 3. Cynthia Lucille Harrell
- 4. Charles Ann Harland
- 5. Sylvan Ross, Jr.
- 6. Marie Lani Martin
- 7. Patrick Lee Haskins

**KMO**



**1360 KC**

WISHES CAN COME TRUE . . . LISTEN TO

**"The Wishing Well"**

EVERY MONDAY, WEDNESDAY, FRIDAY—1030 - 11 A.M.

**FISHER'S**  
DEPARTMENT STORE

*In Tacoma, Home of America's LOWEST  
Power Rates, IT'S NATURAL TO*

*Cook with Electricity*

BECAUSE Tacoma City Light is municipally owned, every home enjoys the benefits of America's LOWEST electric rates. That's why we say: "In Tacoma it's natural to cook with electricity. Cheap, too — cleaner, faster and safer!"



**TACOMA CITY LIGHT**

*Owned and Operated by the People of Tacoma*



**FUEL OIL  
SERVICE CO.**  
*Serving Satisfied  
Customers*  
**MAIN 3171**  
810 A ST., TACOMA



**We all like  
JORDAN'S  
Bread**



**A COMPLETE  
BANKING SERVICE**

- Checking Accounts
- Savings Accounts
- Commercial Accounts
- Trust Department

**PUGET SOUND  
NATIONAL BANK**  
of Tacoma



Member F.D.I.C.

**SEARS**

TACOMA

# Daniels Hardware

GRanite 7947

- Plumbing Supplies
- Electrical Supplies
- Paint

- Sporting Goods
- Fishing Licenses
- Household Utensils

## G. W. Paulson Co.

Linoleum - Carpets - Rugs  
Venetian Blinds

PA Broadway 2164 - 148 St Helens Ave.  
Tacoma, Washington

## C. Fred Christensen STATIONER

WJ Pacific Ave

Tacoma

## COLLEGE SERVICE AND GARAGE

E. Jorgensen

UNION OIL PRODUCTS

GRanite 8107

Parlond

☆

The 1947 Saga was printed by the  
BEARD PRINTING COMPANY  
Parlond, Washington

☆

*Fine commercial printers and  
publishers of the  
PRAIRIE POINTER  
and  
MOUNTAIN HIGHWAY GUIDE*

☆

**SYSTEMATIC SAVING** — Save a large amount no matter how small  
accounts always secure

Tacoma's Oldest  
... 47 Years!



9<sup>th</sup> and A<sup>th</sup> Streets  
Phone MA-3133

# TACOMA SAVINGS & LOAN ASSOCIATION

Enchings - Oil Painting - Plastics - Photography

**McLaughlin Studio**  
COMMERCIAL PHOTOGRAPHY

*Portraits by Geraldine*

For Appointment:  
Call Hillside 2214 2027 So. Tacoma

**Mrs. Frisbie's Bakery**

710 So. Hillside L. CA. 1594

**W. S. SCHILLING**  
JEWELER

*Watch and Jewelry Repairing*

711 So. Hillside St. Tacoma, Wash.

**Lincoln Hardware**

J. B. Fink

1716 South G Street  
Tacoma G A 1425

*The Right Fuel for Your Burner*

**Oil Sales & Service, Inc.**

MAin 6137

FOR PROMPT DELIVERY OF STOVE, DIESEL  
AND HEAVY BURNER OILS. CALL MAIN 6117

J. GLYN SMITH, Pres.

Tacoma, Washington

**Griggs Cut-Rate Drug**

Mark L. Griggs, Prop.

Prescriptions — Drugs

2035 Hillside Ave. Tacoma, Wash.  
MAin 9215

**ART'S SHOE SHOP**

Shoe Repairing of All Kinds

PARKLAND

**BLUE SPRUCE**

SERVICE AND MOTEL

UNION OIL 76

Parkland

G Granite 808

**THE BUNGALOW**

GOOD THINGS TO EAT

G Radio 978

On Mountain Highway

**Oakes**

**APPAREL**

921 Broadway

Tacoma

**COLLEGE BARBERS**

MARSH and KNUDTSON

**JOHNSON AND ANDERSON**

**General Merchandise**

*"THE STORE THAT HAS IT"*

On the Mountain Highway at Parkland, Washington

**BLUE RUSTIC and PARKLAND CAFE**

Mr. and Mrs. Ray Simi

Parkland

Washington

**UNITED MUTUAL  
SAVINGS BANK**

**THE ONLY SAVINGS BANK**

Washington Building  
11th and Pacific

Federal Deposit Insurance Corp.

**Caswell Optometrists**

914 1/2 St. Helens St. Broadway

MA 4745

Tacoma, Wash.

**RAYMOND  
ELECTRIC CO.**

Engineers  
Contractors

813 Pacific Ave. Tacoma

**BERGH-CRIGGS CO.**

PLUMBING HEATING

OIL BURNERS  
All Makes

709 Pacific Ave. Main 0957  
Tacoma, Washington

*Best of Everything*

**Neff's  
Food Store**

Groceries — Meats  
Fresh Fruits — Vegetables

FREE DELIVERY

3317 McKinley Ave. MAin 6412

**SELDEN'S**

*First in Floor Coverings*

Electrical Appliances  
Linoleum — Rugs  
Shades — Bedding  
Carpets

TACOMA — OLYMPIA

David A. Ekberg R. F. Roetzell

**FRANK EKBERG  
& CO.**

INSURANCE OF ALL KINDS

101 Puget Sound Bank Bldg.  
MAin 3356 Tacoma, Washington

COMPLIMENTS  
of

**COLLEGE CLEANERS**

Mr. C. S. Pardo

*Headquarters for*  
Quality Diamonds  
Watches and Jewelry

*in Tacoma Since 1899*

**MERROW'S**

1101 Broadway

Opp. Public

## Anders Florist

*"Special Caring for  
Special People"*

255 So. 12th St.

MAin 7113

Tacoma

*Mubley's Golden Nugget*

JEWELRY

*Luxury Gifts of Quality*

**H. E. MURPHY**

Portland Theater Bldg., Portland, Wash.

Phone ORange 8333

## 98th Street Hardware

Hardware

Paints

Plumbing Supplies

Electrical Supplies

*Congratulations*  
*to the*  
Graduates of 1917

*Young's*  
**Gift Shop**

**D. & M. Typewriter and  
Adding Machine Co.**

Royal Portable Typewriter Agency

Sales and Service of Typewriters - Adding  
Machines - Calculating and  
Bookkeeping Machines

726 1/2 St. Helens Ave. Tacoma 2 Wash.

Phone MAin 1674



*Congratulations from*

# **Pochel Distributing Co.**

Rt. 7, Box 467-A

Tacoma, Washington

OK 2613

and our

## **MOBILGAS DEALERS**

**Brookdale Service**  
Mt. Hiway at Brookdale

**Antlers Service**  
Airport and Pacific

**Mull's Service**  
9805 Pacific

**Andy's Service**  
16th and Park Ave.

**Harmon's Service**  
3002 Park Avenue

**Ted & Bill's Service**  
8808 Pacific Avenue

**Jopp Grocery**  
84th and East "K"

**Collins Garage**  
Near Collins School

**Summit View Service**  
Airport Road at Summit

**Fir Grove Service**  
Meridian, South of Puyallup

**Hansen's Mobil Service**  
Cathlamet, Wash.

**Bailey's Service**  
Mt. Hiway at Roy Way

**Porsch's Service**  
Roy, Wash.

**D & H Mobil Service**  
Yelm, Wash.

**Kleimenhagen Service**  
Yelm, Wash.

**Ted's Service**  
Rainier, Wash.

**Butler's Service**  
Kapowsin, Wash.

**Percival Service**  
Mt. Hiway near Loveland

**Kuper's Korner**  
Mt. Hiway at Elk Plain

**Triangle Garage**  
Eatonville, Wash.

**Wiegand's Service**  
Alder, Wash.

**Elbe Garage**  
Elbe, Wash.

**Modahl Auto Parts**  
Spokane

*Congratulations to the Graduates*

Compliments of

**SVERRE GRIMSTEAD**

JEWELER

Fine Diamonds and Watches

1015 Pacific Ave. Tacoma, Wash.

Next to Bank of California

**TACOMA'S BIG SPORTS  
SHOP**

- Sporting Goods
- Sports Clothes

For Men and Women

**WASHINGTON  
SPORTS SHOP**

918-20 Pacific

BR 1136

**SUPERIOR SERVICE**  
*Laundry*  
**SUPREME CLEANERS**  
**GA 4413** 2011 SO. TACOMA WAY

**POSTWAR**

LAUNDRY AND  
DRY CLEANING  
SERVICE

Prompt, Courteous and  
Dependable

*You'll find your friends at . . .*

**The Bug**

**"OPEN FOR YOUR CONVENIENCE AND FOR YOUR  
TASTE PLEASURE"**

**Stan Sather  
SERVICE STATION**

STOVE AND DIESEL OIL

3526 McKinley Ave. MAin 9877

*Flowers for All Occasions*

**LUND FLORAL CO.**

*"From Greenhouse to You"*

GArland 2527

9021 Pacific



**Parkland Pharmacy**

**OPEN**

9:00 a.m. to 9:00 p.m.

Registered Pharmacist

on duty at all times

Pacific A-Frame and Allyn

O.R. 8614 8510

Tacoma

(Formerly Lundberg Drug)

**GATES MARKET**

Call O.R. 8614 for

**FREE DELIVERY**

Parkland

Washington

**Congratulations  
and many thanks**

FROM YOUR COLLEGE PHOTOG.

**MYRON B. KREIDLER**

**Brookdale Lumber Co.**

Lumber Hardware Paints

Home Building Supplies

Plumbing and Electrical

Office and Yard at Brookdale on  
Mountain Highway

Rt. 7, Box 420

O.R. 8614

*Another Gladiator Booster*

**THE DONUT BAR**

303-5 So. Y. & Linn

111. 2001

## Clover Creek Market

O.R. 3013

Rt. 7, Box 328

Mountain Highway at Brinkdale

"A Pleasant Place to Shop"



Men's and Boys' — Ladies' and Children's  
WEARING APPAREL

**Bryans' Clothing Store**  
206 51st

Have Enjoyed Being Back with the Students — Much Success  
to the Graduating Class

# PARKLAND GRILL

JACK and JEAN CIMINO

## Lutheran Brotherhood

*Legal Reserve Life Insurance for Lutherans*

MINNEAPOLIS 2

HERMAN L. EKERN, *President*

MINNESOTA

5407 S. Pine Str.

**Ovis J. Grande**

CI.A. 1097, Tacoma

1928 S. Houston

**O. W. Warber**

MA, 2120, Tacoma

EINAR N. BOTTEN, C.L.U., *General Agent*

303 1/2 W. Arts Bldg.

SEA, 1742

Seattle 1, Wash.

**C. O. Lynn Co.**  
MORTUARY

717  
TACOMA  
AVE.



Phone  
MAIN  
7745

Tacoma, Washington

V. K. Sells

L. S. Rytönen



**Parkland Fuel Oil**  
and  
**Service Station**

GRanite 8112

Parkland

### Gladiator Service Station

S. Sunset Products  
Auto Repairing

J. B. Backwith

Parkland

*"It Pays to Play"*  
**Dill Howell Sporting Goods**

929 Commerce  
Tacoma 2      MAin 5665

COMPLIMENTS  
of  
**H. E. JENSEN**

**Marshall's Corner**  
Service Station — Groceries  
Abramson & Park Ave.      GR 7610

# Parkland Light and Water Co.

Power Among the Light and Water Companies of the State  
**31 Years of Successful Operation and Growth**  
ESTABLISHED IN 1914 BY A GROUP OF FORWARD LOOKING  
CITIZENS. IT NOW HAS OVER 900 MEMBERS

The ~~company~~ furnishes the community with street lights, free of charge — Our total assets are now nearly \$200,000.00 — We own and operate from the finest modern office building in Parkland.

We have our own water system, with many fire hydrants and miles of electric lines.

#### TRUSTEES

Stanley Rosen, President  
Walter F. Daniels, Vice President  
H. J. Stuenkel, Treasurer  
Father Davis, Collector

Jack Johnson, Secretary  
Herbert Socolofsky  
Mike White, Manager

### Raker - You - Drive

754 Commerce St.

CARS AND TRUCKS

Tacoma Owned and Operated

MAin 5515

### Bjorkman's Food Store

*Quality Food*

1016 South Kay St.

*Skate Your Date . . .  
. . . On Ice*

**Fun For The Whole Family!**

**AFTERNOONS — EVENINGS**

**HAL WEBB, Manager**

**Late Night Sessions, Thursday and Saturday**

**10:15- 12:00 Midnight**

*Skate to Our Organ Music*

---

**ENJOY OUR BEAUTIFUL SNACKBAR  
(~~Club~~-enclosed — Delicious Food — Fireplace)**

---

*Professional Skating Instructions  
by our two experts*

**GEORGE and LEAH MILLER**

**Phone Lakewood 2176 for Appointments**

**LAKWOOD ICE ARENA**

**Steilacoom Lake**



*Campus  
and  
off-campus  
wear*

*Knowingly priced*

*Lou Johnson*

---

**THE STATIONERS, INC.**

OFFICE AND SCHOOL EQUIPMENT AND SUPPLIES

926 Pacific Avenue

MAin 2155

927 Commerce St.

---

**ANDERSON LUMBER COMPANY**

*M. W. Anderson, Prop.*

**PAINT AND HARDWARE**

1041 Pacific Avenue

Tacoma, Washington

GRanite 7311

WITH CONGRATULATIONS TO

THE GRADUATING

CLASS OF

**1947**

AND

BEST WISHES

TO ALL STUDENTS

● OF PACIFIC LUTHERAN COLLEGE

SKOOG ENGINEERING CO.

Olympia, Wash.

