



1958 ROYALTY includes Queen Clintena Wells, above, Princess Barbara Johnson, right, and Princess Marilee Andersen, lower right.



'202' Discussion Set for Tuesday

Controversial "Initiative 202," Washington's proposed "right to work" measure, will be discussed pro and con next Tuesday night at 7:00 in CB-200, announced the history and political science clubs.

This measure, which has been endorsed in several states by the Republican party, will be affirmatively discussed by Mr. Howard Reed, Tacoma lawyer and graduate of Harvard. A union representative will present some of the views against the proposed measure.

Voters and prospective voters will have a good opportunity to learn the facts and feelings surrounding this vital issue. An open discussion will follow the program.

Statistics Reveal Diversity at PLC

Behind dull, cold statistics often are interesting stories. PLC's enrollment figure, 1554, conceals a story of diverse student religious affiliation and geographic distribution.

The name Pacific Lutheran College is deceiving because more than 400 people enrolled are affiliated with 21 different non-Lutheran churches, ranging from Roman Catholic to Buddhist.

The largest Lutheran group represented on campus is the ELC with 601 students. Second biggest is the ALC with 182 and third is Augustana with 157. Missouri, ULC, Lutheran Free, UELC, Wisconsin, Suomi, Norwegian and AELC synods plus the Church of Norway also have students here.

The wide range of other churches includes 95 Methodists, 74 Presbyterians, 61 Baptists, and 35 Roman Catholics. Also, there are some from the Episcopalians, Christian, Covenant, Congregational, Pentecostal, Evangelical, Christian Science, Latter Day Saints, Armenian Orthodox, Unitarian, Seventh Day Adventists, Nazarene, Jewish, Friends (Quakers), the Salvation Army, Buddhist and independent churches.

As interesting as the religious variations are the geographical distributions. Washington is out in front with 1066 students, and California is a distant second with 171. Oregon runs a close third with 153, while Montana has 50, Idaho 29, Alaska 14.

These places have sent from one to ten students: Minnesota, Wisconsin,

North Dakota, Illinois, Colorado, Michigan, South Dakota, Iowa, Texas, Utah, Arizona, Alabama, Florida, Massachusetts, New York, Missouri, Wyoming, Hawaii, District of Columbia, Germany, Norway, Hong Kong, Canada, Iraq, Korea, Taiwan (Formosa) and Brazil.

Handsome Harry Crowned Tomorrow

Paul Templin, PLC's 1958 Handsome Harry, will be officially crowned following Homecoming's Powder Puff football game tomorrow morning.

"I think it's great!" chimed elated Paul after he was chosen Handsome Harry. The backing of the Linne Society and the Letterman's Club was a big factor in his success, he added.

Active on campus, he is trainer for the varsity athletes and president of the Letterman's Club. Last spring he participated in the May Festival and will be taking part again this year. Counseling the men of fifth floor Old Main is another activity of the 1958 Handsome Harry.

Paul has spread his PLC career over several years. After attending PLC for one year, he joined the Navy for a four-year tour of duty. Then he worked in civil aeronautics for two years prior to returning to PLC.

A senior education major from Puyallup, Paul is better known as "Elmer Fudd," a "moniker" conferred by the Lettermen. His major area of concentration is in the field of social studies with a minor in physical education.

HONORING 1958 HANDSOME HARRY, Paul Templin, is Dave Gabrielson, who opens the CUB door with questionable humility. Handsome Harry will be crowned during ceremonies following the Powder Puff football game tomorrow.

Queen and Court Active at PLC

As the spotlight swung across the stage during chapel last Friday, the remaining Homecoming Queen finalist, Clintena Wells, was thinking, "It couldn't be me, it just couldn't be!" An instant later her doubts were proved wrong as the whole student body, including Princesses Marilee Andersen and Barbara Johnson, rose to acclaim the 1958 Homecoming Queen.

The popular ash-blonde is from Anacortes, Washington. "Clink," as she is called by friends, is majoring in secondary education, concentrating on science and speech. She is undecided about her future career. Now a junior, she has actively participated in Drill Team for three years and was co-chairman last year. Also, last year, she was selected as one of the sophomore attendants in the May Festival.

Upon returning to the "Royal Palace," South Hall B-19, after the Friday chapel announcement of her victory, "Clink" found her room artistically decorated with tissue paper, compliments of Linda Effinger and Elsie McLeod.

Queen Clintena has many interests. Tops on her list are music and sports.

With her large blue-gray eyes shining she expressed her appreciation at being elected. "This is a wonderful honor," she stated, "and I wish to thank everyone so much."

Princess Barbara Johnson, 20-year-old senior from Everett, Washington, has been in many activities during her three years at PLC. Last year found her as vice president of AWS and on the student council. She is presently chairman of the

board of deaconesses.

Majoring in elementary education, Barbara plans to teach first grade.

"I'm very proud and happy to be representing PLC," she commented. Riding horses is one of her favorite pastimes. Next to that ranks playing football, which is just what she and Princess Marilee Andersen will be doing in the Powder Puff game tomorrow.

Marilee is the only Tacoma girl in the court. She is a native but spent six months in Norway in 1952.

Teaching physical education on the secondary level is her ambition. Marilee is currently serving as AWS secretary and regional director of Spurs.

Her reaction to being elected? "UH! This is the one time a Scandinavian is speechless!"

PACIFIC LUTHERAN COLLEGE

mooring mast

Volume XXXVI

Parkland, Wash. Friday, October 24, 1958

Number 5

Coronation and Rally Tonight Start Homecoming Weekend

Queen Clintena Wells will be crowned by U.S. Congressman Thor Tollefson tonight in the CMS Auditorium to officially start Homecoming 1958.

Other Homecoming activities on schedule for the weekend are campus decorations judging and awarding, the post-coronation pep rally and mixer, the alumni dinner, the Powder Puff game and crowning of Handsome Harry, the football game between PLC and Western, the Homecoming play and Sunday worship services and open house. Coffee hours will be scattered throughout the weekend.

For the coronation, Mr. Eric

Nordholm of the speech department has provided a unique opera house setting. Entertainment will be furnished by the Eighth Notes, Al Ostroot and Sheila Knutzen. Royal escorts for the weekend activities are Paul Templin, Don Douglas and Darrel Hines. Following the coronation, Queen Clintena will knight football captains George Fisher and Dick Goodwin.

Varied themes highlight campus decorations, which replace the traditional parade. Developing the Homecoming theme, "Spirit of the West," each organization has worked on a special phase in a specified area.

Decorations judges, chosen from

the alumni, are Del Schafer, Dr. Kenneth Pate, Mrs. LaMonte Hedlund and Mrs. Eugene Ahrendt.

Following tonight's coronation will be the traditional bonfire and pep rally on lower campus. Introduction of the team plus the usual antics of the cheerleaders and songleaders are scheduled. At 9:30 a student body mixer will be held in the gym.

Saturday morning at 9:30 will feature the upperclass women versus the freshmen girls in the annual Powder Puff game. The crowning of Handsome Harry, Paul Templin, will follow this.

Focal point of the whole weekend is the PLC-Western game to be held in Lincoln Bowl at 1:30 Saturday afternoon.

Old grads will have an opportunity to get reacquainted at the Alumni Dinner set for 5:30 Saturday in the CUB dining hall. Entertainment, plus a turkey dinner, will be provided. Greetings will be expressed by Homecoming Queen Clintena Wells, Dean Philip E. Hauge, student body president Don Douglas and alumni president Lawrence J. Hauge. Master of ceremonies will be Jay Tronsdale. Tickets for the dinner will cost \$1.50.

Moliere's comedy, "The Imaginary Invalid," will be presented in the CMS Auditorium at 8:30 p.m. Saturday. The play is being produced by the Alpha Psi Omega in conjunction with the PLC speech department. Bob Fleming is director of the play.

The Rev. Roy Olson, PLC director of public relations, will speak during Sunday morning worship services in the CMS. Both the Choir of the West and the student congregation choir will sing.

Open House in all the dormitories from 2 to 5 p.m. Sunday will conclude Homecoming 1958.



Senator Magnuson To Speak At Student Congress Nov. 1

Senator Warren G. Magnuson will deliver the "State of the Union" message at the 10th annual Student Congress to be held at PLC Saturday, Nov. 1.

Purpose of the congress is to acquaint students with our government and political parties. Participating students register as Republicans or Democrats and the party affiliation continues throughout the day.

About 40 to 50 high schools from this area will participate. Advance registration for the confab indicates a bigger turnout than previous years, according to Jim Traynor, director of the Student Congress. A total of 200 student Senators and Representatives is expected.

A politicking hour, committee meetings, House and Senate meetings and a joint session of Congress

are on schedule for the day. Party actions, such as choosing party floor leaders and "whips," will be included.

At 9:30 Senator Magnuson will give the "State of the Union" address in the CMS Auditorium.

All sessions of the congress, which is sponsored by Pi Kappa Delta, national speech fraternity, are open to the public.

On the steering committee for the congress are Don Douglas, Bettelou Macdonald and Cal Capener. Committee chairmen are Orin Dahl, general arrangements; Herb Dempsey, publicity; Louise Kraabel, ballot committee; Jeris Randall, resolutions committee; Bettelou Macdonald, registration; and Bob Olsen, incidentals. Prof. T. O. H. Karl of the PLC Speech department, is adviser.



CHECKING TROPHIES in preparation for the 10th annual Student Congress are, left to right, Judi Johnson, Jim Traynor, and Jeris Randall. The Student Congress, with Sen. Warren Magnuson as featured speaker, will be held at PLC Nov. 1.

PLC Thespians Pick 'Diary of Anne Frank'

On November 20, 21 and 22 the all-school play, "The Diary of Anne Frank," will be presented by the speech department in the CMS. Miss Jane Smith is the director and is assisted by Arlene Halvor.

This story was dramatized by Frances Goodrich and Albert Hackett and was taken from the book, "Anne Frank, The Diary of a Young Girl."

The cast consists of: Mr. Frank, Ray Braaten; Miep, Martha Rogness; Mrs. Van Daan, Gini Dryer; Mr. Van Daan, Bob E. Olson; Peter Van Daan, Fred Bindel; Mrs. Frank, Barbara Stuhlmiller; Margot Frank, Sheila Knutson; Anne Frank, Bobbie Jo Baird; Mr. Kraler, Rex Peterson; and Mr. Dussel, Bob Fleming. Set decoration is supervised by Mr. Eric Nordholm.

PLC's New Gallery Holds Art Exhibit

PLC's Art Museum will house a special exhibit in honor of Homecoming.

Completed last May, the museum has been empty up until now, due to the time it takes for students to complete work. For those who have not seen this room, it is just back of the Coffee Shop in the College Union Building.

The large modernistic painting that has been there was done collectively by the students in Mr. Roskos' painting class at the close of last year.



AROUSING HOMECOMING EXCITEMENT at tonight's pep rally and tomorrow's game will be the task of these cheer and song leaders. The cheer leaders, above, are, left to right, Roger Reep, Jant Aust, Bob Gross, Linda Effinger, Barbara Aust and Joe Smith. Left to right, below, are songleaders Nancy Olson, Grace Helgren, Rita Altpeter, Karen Bird, Charmaine Jondall and Tonette Erickson.



Yell, Song Leaders Plan Surprises

PLC's yell leaders and songleaders are planning a big surprise for the after-coronation bonfire and pep rally tonight. "You will have to come to find out the surprise," they commented, refusing to reveal the secret.

Four of the cheerleaders are returning veterans from last year. This quartet from last year—junior Janet Aust, sophomores Linda Effinger, Roger Reep and Joe Smith—will be assisted in the vocalizing and gymnastic chores by frosh Barb Aust and sophomore Bob Gross.

Janet, an elementary education major, is from Vancouver, Washington, as is her sister Barb. Barb is taking a general course, might decide on parish work as a vocation. Linda, a Tacoma-ite, plans to teach high school. Roger and Bob are both education majors from Mt. Vernon. Joe, a Vita-Craft salesman whose home is Seattle, is preparing for the seminary.

Cheerleaders will show off new outfits when basketball season starts. "Anyone knowing any clever yells or ideas will be listened to with rapt attention," they added in near unison.

Returning songleaders from last year are juniors Rita Altpeter and Grace Helgren, and sophomore Charmaine Jondall. Other songleaders are sophomores Karen Bird and Toni Erickson, and junior Nancy Olson.

All the girls are education majors except Grace, who is a business major. California and Washington are represented very well by the girls, for Grace, Karen, Toni and Nancy all come to PLC from Seattle, while Charmaine hails from San Diego, and Rita's home is Ventura, Calif.

The songleaders, who are planning new routines to replace the old ones, will also have new outfits by basketball season.

Eastvolds Greet Homecoming From India

Greetings from India! Although Mrs. Eastvold and I are separated from you by thousands of miles this Homecoming weekend, our thoughts and prayers are with you. May you have a wonderful time together—students, faculty, staff, alumni and friends.

We miss all of you at home a great deal, and this will be especially true at Homecoming. Through the years it has always been a great thrill to take part in the wonderful activities you students put on and to visit with the alumni and friends who come to the campus.

The Lord's richest blessings to all of you, and we look forward to our own homecoming in your midst December 2.

Cordially,
DR. S. C. EASTVOLD

For the Lady:

FALL PLAYWEAR—\$2.98 to \$9.98.....now \$1.99-\$7.50
Special Group SWEATERS.....\$3.98-\$22.98
FALL SKIRTS\$2.99-\$10.50

JANET'S

Ladies' and Gents' Sportswear

Grand Opening

TODAY AND TOMORROW

FREE COFFEE AND COOKIES

FREE FAVORS FOR FIRST 50 LADIES

Door prizes compliments of Catalina, Van Heusen and Day's Tailored Clothing

For the Gent:

FALL SPORT SHIRTS—\$4.00 value.....\$2.99
HOODED SWEATSHIRTS—\$3.98 value\$2.99
MEN'S SOCKS—\$1.00 value.....79c or 2/\$1.50

Janet's

LADIES' AND GENTS' SPORTSWEAR

409 GARFIELD STREET

PHONE LE. 1-0611

EXPERT DRY CLEANING

LAUNDRY SERVICE

CENTRE CLEANERS

ONE-DAY SERVICE

MRS. JO SUMMERS

Parkland Center

Phone LE. 7-4300

Best Wishes for a Successful Homecoming

Washington Sports Shop

10th and Pacific

WELCOME, ALUMS . . .

IT'S GOOD TO SEE YOUR FACE AGAIN

McKewen Studio

405 Garfield Street

Phone LE. 7-3833

Editor.....Dick Londgren
 News Editor.....Herb Dempsey
 Sports Editor.....John Hanson
 Feature Editor.....Carol Morris
 Business Manager.....Mary Lou Engen
 Adviser.....Mr. Milton Nesvig

Office: College Union Building
 Phone LEnox 7-8611, Extension 41
 Subscription price \$3.00 per year.



Homecoming for Grads

Welcome, alumni! Homecoming is designed for you. This is the opportunity for old grads to renew friendships and re-live their college days as well as for noting the changes on their campus.

This year, especially, the students of PLC want to honor you. Your contribution to the growth of the college, via the PLC Development Fund, is truly appreciated by the student body.



Homecoming 1958 is a tribute to your generosity and interest. Only with your help is PLC able to continue its threefold educational program, emphasizing the physical, mental and spiritual growth of its students.

1958 Elections

"Off-year" elections will be held throughout the country Nov 4. Absence of the Presidential contest in the "off-year" elections causes voter apathy.

But these elections are important. All 436 seats in the House will be filled; 36 Senators will be chosen; 34 governorships will be at stake; and many local offices and issues will be decided.

Several major issues face the voters of the country. One is the recession and unemployment. To PLC students seeking summer work and to graduates seeking permanent employment, this issue is of direct concern. To solve this problem Democrats want a long-range program of government spending. Republicans, on the other hand, say that the problem is already moving toward satisfactory adjustment.

Labor corruption, recently focused on Dave Beck of Seattle and now Jimmy Hoffa, both of the Teamsters' union, was examined by a Senate investigating committee. Republicans charge that the Democratic controlled Congress failed to pass necessary legislation to curb racketeering in labor.

Also in the labor picture is the "right to work" law, which has already been passed by 19 states. This type of law states that everyone has the "right to work," regardless of union affiliation. Democrats charge that this law undermines all progress made by labor unions. Voting on "Initiative 202" will decide the question in Washington.

Government corruption is another issue. Democrats point to Sherman Adams, special assistant to President Eisenhower, as an example of Republican corruption. Accused of using his influence to get favors for Bernard Goldfine, Adams resigned his post last month but denies guilt.

On the Red-Nationalist China issue, Democrats insist that approaching the brink of war for a few indefensible islands off the coast of China is ridiculous. We must draw the line somewhere on aggression, counter Republicans.

Public or private development of hydro-electric power is a big question in the Northwest. Democrats favor government development; Republicans want private investment.

Many key contests are being waged now. In California an especially intense campaign is on for the governor's position. Republican Senator William Knowland, who has endorsed the "right to work" bill, is battling Democrat State Atty. Gen. Edmund Brown. New York is the location of a struggle between millionaires for the gubernatorial post. Nelson Rockefeller, Republican, is challenging Gov. Averell Harriman, Democrat.

Alaska will elect two Senators, one Representative and a governor in a special election on Nov. 25.

Thus, these "off-year" elections can have a great bearing on policies ranging from international to local scale.—DICK LONDGREN.



MAKING LAST MINUTE CHANGES for tomorrow night's Homecoming play are, left to right, director Bob Fleming, Solveig Leraas, Sylvia Sodergaard and Fred Bindel. The play, Moliere's "The Imaginary Invalid," is being produced by Alpha Psi Omega, national drama fraternity.

Coeds Study Hula-Hoop Science

By Barbara Jackson and Alice Jessen

"Watch out! Here it comes! That gyrating, circular mass of synthetic material—the hula-hoop." This warning cry may be heard echoing from our campus at any time.

There are various methods by which one may launch this cycloid into orbit. The first is the "conservative" method in which the individual takes the easy way out by moving only slightly.

In the "petrified-man" method, one depends solely upon the biceps to produce the momentum which inevitably ends in a spiral to the floor.

Then there is the "South Sea Islander" method; need we say more?

The "knick-knack breaker" has good intentions but he must surmount numerous obstacles in reaching his goal. Needless to say, only those in the Rockefeller-Vanderbilt category can afford this destructive style.

Last, but not least, is the "cyclonic" method (most commonly used among the student hoopers) consisting of fervent movement of the torso accompanied by wild gesticulations culminating in a final frenzy—as the hoop falls to the floor.

We experts in the fine art of hula-hooping have one suggestion for becoming proficient in this cultural activity—KEEP IT UP!

Tower for Mooring Dirigibles Inspired 1924 Journalists

By Audry Hart

Where did the name "Mooring Mast" come from? Does it have anything to do with Scandinavians or Vikings or Gladiators? Or does it have something to do with ships and their dockings? Or, let's see, could it be connected in some way with the masthead of the paper? The answer is no to all those queries about the name of the PLC newspaper.

People of the jet-age would never guess the source of the name, but it was a logical choice in 1924 when the newspaper was organized. Then the country was agog about a "lighter than air" mode of transportation—dirigibles.

These airships couldn't land on the ground like modern airplanes,

Absentee Ballot Aids Collegiate Voters

Are you a registered voter? If so, this article may apply to you. Voting time finds many college students away from home and out of their precinct. The general tendency is to let this chance to vote slip by. But if you want your voice in government to be heard, this is the way:

Any properly registered voter who expects to be absent from his precinct at election time may apply to his county or city clerk for an absentee ballot during a specified time beforehand. This application should include the reason for absence, the signature of the person applying, and his present and home addresses.

These directions apply to Washington, Oregon, California, Montana and Idaho.

so for mooring these "blimps" all over the country towers were constructed. One of these towers, which were known as mooring masts, was built on the prairie south of Spanaway near Fort Lewis. Even the first American dirigible, the "Shenandoah," anchored there.

At the height of this dirigible craze, 1924, PLC students and administration succumbed to the pressing need for a campus newspaper. This would inform the alumni of PLC activities, publicize our school to outsiders and make a permanent record of campus events.

When choosing a name for PLC's newspaper, these fledgling journalists were naturally inspired by the silhouette of the mooring mast rising from the prairie.

What better name could be given the paper than the Mooring Mast? Just as the mooring masts for dirigibles were destined to become centers of community interest throughout the nation, dispensing information to all seekers, so would the PLC newspaper become the nucleus of news and ideas at PLC. But only the PLC Mooring Mast survived the vicissitudes of time—the originals died from disuse.

Occasionally students wonder if the name of the paper could be changed to something more meaningful. But why change one of the most unique newspaper names in the country? A mooring mast may not be as modern as a rocket launching tower, but it does have the tradition of an adventurous era.

Unpredictable 'Invalid' Challenges PLC Cast

Moliere's "The Imaginary Invalid," which opened yesterday, will be presented for a Homecoming audience tomorrow night at 8:30 in the CMS Auditorium.

The 17th century French satirical comedy reflects the feeling of the playwright toward the backward physicians of his time. A man in love with his health, his daughter in love with a disapproved suitor and his wife in love with money are the peculiar components of the fast-moving plot.

Interviews with the members of the cast indicate the parts are challenging to portray.

Herb Dempsey, playing the imaginary invalid, said, "The part is especially challenging because I know its history. Changing from the robust, healthy Ardin to the imaginary invalid is a problem. History says that Moliere was playing the part of the invalid when he was stricken with a fatal illness. I am sure he died of exhaustion after chasing the maid around the room."

Solveig Leraas, as Toinette the maid, quipped: "The person I do most of my scenes with is quite a challenge!"

"Both the cast and the play are a challenge," concluded director Bob Fleming, "but the antics in Moliere's usual comic vein will tickle the audience."



Fleming sez:

By Bob Fleming

Heigh ho, everybody! This is Uncle Bob-Bob again. The only guy on campus with five o'clock shadow on the top of his head. . . . I know a guy who went blind from drinking the coffee shop's coffee. That's right—left the spoon in his cup.

DID YOU HEAR THE ONE ABOUT—the bop cannibal? Eats three squares a day. . . . IS IT TRUE that since the quiz show scandals the professors on campus will stop giving tests? Possible.

OVERHEARD—He can't be a very good doctor. All his patients are sick. . . . Speaking of medicine, medical science is always on the move. First, it gave us sulphur drugs, then chlorophyll, then penicillin, and now the greatest discovery of them all—frozen bandages! For cold cuts.

TESTIMONIAL: Dear Mr. Fleming: I read your last column while taking a bath. That makes two of us that are washed up. . . . Something puzzles me.

(Continued on page 6)



A MOORING MAST, (left), was a part of the original 1924 PLC Mooring Mast nameplate. Used to anchor dirigibles, which were a revolutionary step in transportation at the time, a mooring mast was considered an appropriate namesake for the newspaper. The dirigible drawing, above, headed a humor column in the original Mooring Mast.

'Vanity Fair' Characters Fit Modern-Day Society

By JoAnn Hudson

"Vanity Fair," by William Thackeray, is as enjoyable a novel today as it was when it was written over a century ago. The title, chosen no doubt from the Vanity Fair of Bunyan's "Pilgrim's Progress," gives a good idea of what Thackeray's intentions were. The novel deals with the people of Victorian England, showing their vanity, their follies and hypocrisies.

It won continuous, universal appeal through Thackeray's portrayal of the characters. They are as true to life today as they were 100 years ago.

One of the main characters, Becky Sharp, is well known throughout the reading world as one of the most vividly drawn characters in literature. Thackeray deals with many types of people in his "novel without a hero" and in so doing gives an excellent picture of England of that time.

Despite limitations on authors of that era, he did a good job of depicting the moral and ethical standards of the day.

Thackeray shows the people of his period with their faults, vanities and follies—the same that characterizes people of today. His characters could step out of their "Vanity Fair" of Victorian England into our modern liberal world, as we choose to call it, and be quite at home.

PLC Meets Western at Homecoming

Gridders Take On Foe Tomorrow in Tacoma

Pacific Lutheran College's grid forces will be pulling for an upset tomorrow afternoon when they host the Western Washington College Wildcats in the big event of Homecoming weekend for the Lutherans. The Evergreen Conference game will begin at 1:30 in Lincoln Bowl and will find the Gladiators still looking for their first win on the football season.

After dropping a 27-0 encounter to the Seattle Ramblers last Saturday at Renton, the Lutes now have lost their first four games of the season.

Last year the Wildcats bumped PLC 20-13 at Bellingham, and this year Coach Jim Gabrielsen's Lutherans will be out to get revenge before the homecoming crowd.

In 24 games between the two schools, Western has beaten the Glads 14 times while the Lutes have won only 7. Three contests have ended in ties.

Linfield College in McMinnville, Oregon, handed Western their first defeat of the year last Saturday when they clobbered the Wildcats 37-14.

Tom Emerson, Western halfback, was little All-American honorable mention last year, and is back sparking their team again this year.

Team Photos for Sale
 Pictures of Pacific Lutheran's 1958 football team are being sold by Lettermen's Club in the CUB and at the game tomorrow, according to club president Paul Templin. The price is 50 cents and the profit will be used for athletic activities.

Old Main Teams Clash To Decide Intramurals

Third and Fourth Floor Old Main teams play each other this coming Thursday in a tilt that will probably decide the 1958 intramural championship. Going into the final week of play the two are tied for the top spot, having each tied one game.

Eastern Parkland battled Third Floor to a 12-12 tie yesterday to put the first mar on Third Floor's otherwise spotless record. Early this season Western Parkland had fought Fourth Floor to a 12-12 deadlock.

	W	L	T	PF	PA
Third Floor	5	0	1	128	30
Fourth Floor	5	0	1	100	42
W. Parkland	4	1	1	116	58
DeJardines	4	2	0	98	54
Second Floor	3	3	0	44	105
E. Parkland	2	2	1	84	62
Clover Creek	1	4	0	24	92
Evergreen S.	2	4	0	42	54
Tacoma	1	5	0	50	138
Evergreen N	0	6	0	66	106

RESULTS THIS WEEK

4th Floor 20, Eastern 6; 3rd Floor 24, Tacoma 12; Evergreen S. 24, Evergreen N. 18; Western 26, 2nd Floor 8; 4th Floor 24, DeJardines 6; Eastern 24, Clover Creek 6; Evergreen S. 30, Tacoma 16, DeJardines 30, Clover Creek 6; Eastern 12, 3rd Floor 12.

GAMES NEXT WEEK

Oct. 27—Evergreen S. vs. 3rd Floor; Western vs. Tacoma; Evergreen N. vs. 4th Floor.
 Oct. 28—2nd Floor vs. Clover Creek; DeJardine vs. Eastern; 3rd Floor vs. Western.
 Oct. 29—Tacoma vs. 4th Floor; Clover Creek vs. Evergreen N; DeJardine vs. 2nd Floor.
 Oct. 30—3rd Floor vs. 4th Floor; Evergreen S. vs. Tacoma; Tacoma vs. Clover Creek.



READY FOR HOMECOMING GAME tomorrow is the 1958 Pacific Lutheran team. First row (left to right): Manager Paul Templin, Dave Bottemiller, Jim Esau, Val Barnes, Orson Christensen, Bob Bills, George Doebler, Mike Teel, George Fisher, John Jacobson, Kent Tokrony, Leo Eliason, and assistant coach Mark Salzman. Second row: coach Jim Gabrielsen, Charles Mays, Charles Hobbs, Larry Robinson, Roger Lundblad, Zane Wilson, Jerry Donaha, Gordon Koetje, John Mitchell, Gary Vestal, Lou Blaesi, Gene Schaumberg, Ron Colton, Al Broeckel, and Larry Craig. Third row: assistant coach Gene Lundgaard, Gene Aune, Tom Gibbs, Chuck Robbins, John Hayward, Dave Berg, Ron Walsh, Seth Anderson, Bill Bates, Bob Parker, Dave Neinhuis, Roger Gustafson, Bruce Alexander, and Chuck Curtis. Not pictured are Dick Goodwin, Tom Mays, and Lloyd Soine.

EVERGREEN CONFERENCE STANDINGS

	W	L	PF	PA
Central Wash.	3	0	90	38
Western Wash.	2	0	27	6
Eastern Wash.	1	2	27	33
Whitworth	1	2	38	77
Pacific Lutheran	0	1	0	21
Puget Sound	0	2	39	49

RESULTS LAST WEEKEND

Whitworth 19, Puget Sound 13.
 Seattle Ramblers 27, Pacific Lutheran 0 (non-conference).
 Linfield 37, Western Washington 14 (non-conference).
 Central Washington 27, Eastern Washington 6.

GAMES TOMORROW

Western Washington vs. Pacific Lutheran at Lincoln Bowl.
 Eastern Washington at CPS.
 Central Washington at Humboldt State (non-conference).
 Whitworth at British Columbia (non-conference).

Students Organize Bowling League

Twenty-four students met at Paradise Bowling Alley last Friday and formed an independent bowling league.

This league is open to any experienced bowlers, male or female, at Pacific Lutheran College. The cost is one dollar for a three line series. This price includes shoes.

While as yet the league is only in the forming stage, attempts are being made to have it sanctioned by the American Bowling Congress.

Any person interested in joining is invited to come to Paradise Bowl this afternoon at 4:30.

Glads Will Host '38 Football Team

Honored guests at the Homecoming game tomorrow will be Pacific Lutheran College's 1938 football squad.

The '38 squad won only two games while losing four and tying one but they were always high in spirit and were always good sports on the gridiron.

Members of the squad were Stan Fries, quarterback; Snooky Jurgensen, fullback and captain; Chuck Fallstrom, halfback; Marv Tommervik, halfback; Ed Pederson, halfback; Blair Taylor, halfback; Bob Tommervik, fullback; Emory Holden, tackle.

Others were George Fallstrom, tackle; Art Freberg, tackle and captain of the '37 squad; Larry Jungck, guard and inspirational award winner; Larry Grenier, guard; Kenny Johnson, guard; Jack Frost, center; Bob Krueger, center; Sig Sigurdson, end; Earl Platt, end; and Larry Rediske, end.



Hap-hazarding

by Eugene Hapala

What better news can we have for the alumni this Homecoming weekend than the announcement from the Office of Athletic Director MARK SALZMAN and Coach JIM GABRIELSEN that the Lutes will possibly be playing their final Homecoming game in the depths of Lincoln Bowl?

Yes, the long awaited promise has been made to the Lute Athletic Department by Mr. VANCE, Assistant to the President, that work will commence immediately after this year's grid season on raising and re-turfing our present practice field so that the turf will be ready for the 1959 season. No comment was voiced on the subject of lighting or the erection of a permanent grandstand, but the big step has been made in the right direction.

Now, once again, we might be able to point to a Homecoming that will truly be coming home. No more loss of a yearly rent bill for Lincoln Bowl and the added revenue from concessions will help to take a burden off the athletic budget. This money saved will be a great help in eventually providing the Lutes with a field that will be pointed to with great pride.

We are willing to wager that the attendance will increase, not decrease, even if the administration cannot figure in permanent seating and lighting for the first two or three years. As all of us so well know, our Northwest weatherman is not always cooperative in the fall and many people stay away from the night games because of the cold evenings.

Not only will afternoon games appeal to the local fans, but the age old problem of student transportation will be licked. In the past, little, if anything, has been done to provide transportation for the student body to the games. A committee was selected to help remedy this problem last year, but it was not completely successful.

This committee appealed to students with cars to pick up anybody who did not have a ride from in front of the CUB. More times than not, many of these students were not picked up, and were forced to go disappointedly back to their dorms. They were in the position of an unfortunate hitch-hiker.

Every student buys an activity card and if even one student is not able to get to school sponsored activities because of a lack of transportation then the activity is failing. The football team is for all of us here at PLC and not meant for the players and coaches alone. We are glad to see the administration's wise handling of this problem and doing their best to alleviate the situation.

This Homecoming weekend should be a gala one and let's hope that we have a bigger and better weekend here at home next year.

Whether or not all the home games can be played at home next year is not yet known, but there is now hope that the field will be ready for some of the games.

STELLA'S FLOWERS
 Flowers for All Occasions
 12173 Pacific Ave. LE. 7-0206
 (Foot of Garfield) We Deliver

GREETINGS TO THE ALUMNI
Young's Gift Shop

LATE MODEL
UNDERWOOD TYPEWRITERS
 FOR RENT
 Special Student Rates
 UNDERWOOD CORP.
 1610 Center St. MA. 7-4801

ROOFING FORMICA PAINT PLUMBING
 ELECTRIC SPORTING GOODS GUNS & AMMUNITION
PARKLAND HARDWARE
 GLASS INSTALLATION - PIPE CUTTING AND THREADING
 121st and Pacific Avenue Phone LE. 7-3171

WELCOME BACK, ALUMS
AL GUY'S SPORTING GOODS
 Come in and see us for your hunting and fishing needs
ARCHERY EQUIPMENT, TOO
 9450 PACIFIC AVENUE PHONE GR. 2-8524

FASHION CLEANERS
 3820 South Yakima
 ★
FREE PICK-UP and DELIVERY SERVICE
 Parkland and Vicinity
 ★
Phone GR. 2-3372

Powder Puffs Play Saturday Morning

Game Starts at 9:30 On Lower Campus Field

Speed, stamina, strength, and weight—all qualifications of a good football team—will be combined on the gridiron tomorrow morning when the freshman girls take on the upperclass women in the annual Powder Puff game. The battle will get underway at 9:30 on the Lower Campus Field.

The upperclass women are favored to win by several touchdowns but that does not worry the fearless Freshmen, stated their co-captain Barb Aust. "We have a few tricks up our sleeves," she stated. The starting line-ups are as follows:

Upperclassmen	Wgt.
Gummy "Killer" Emerson	190
Marilee "Mangle 'em" Anderson	201
Elmarie "Loose 'em" Loop	185
Billie "Butch" Phipps	241
Jan "Baby Face" Aust	299
Darlene "Dodger" Kelly	196
Sharon "Immovable" Julian	187
Barb "Bullet" Johnson	221
Denise "Poll" Nygaard	194
Nancy "All Out" Olson	276
Kitti "Classy" Murphy	239
Carlene "Bottle Blond"	
Sorenson	266
Gina "George" Jones	179
Shirley "Shove Over" Christopherson	222
Doris "Deadly" McCammant	290
Judy "Wow!" Struthers	302
For the Frosh	Wgt.
Roxy "Snake Hips" Hanson	340
Rita "Rock 'em" Brillhart	206
Carol "Swivles" Swanson	46
Phyllis "Fireball" Steahn	198
Gail "Clipper" Leonard	300
Arlene "Push 'em Back"	
Cartnell	297
Karn "Stretch" Johnson	187
Sandy "Signals" Lozier	199
Pat "Flash" Cadd	238
Barb "The Arm" Aust	366
Janet "TD" Gullekson	205

Defense:
 Jaquie "Boy Crazy" Haverberg...100
 Tudy "Intruder" Rogness...367
 Nadine "Shifty" Bruins...220
 Barb "Wild" Wilber...247
 Darlene "Speed" Storkson...219
 Jill "Zip" Buckingham...177
 Jackie "Fakie" Frizell...165
 Judy "Punch 'em" Peterson...198
 Myrna "Muscles" Cavander...237
 Judy "Cut 'em Up" Carter...195

The game promises to be a gentle, soft game as it has been in years past. The practices have also been lacking in any rough play. Several girls with taped up ankles and cuts between their eyes have been circulating vicious rumors about some hard fought plays in practice.

SUPPORT OUR ADVERTISERS

Lutes Drop 27-0 Battle To Ramblers

After holding the Seattle Ramblers scoreless during the first half, Pacific Lutheran College's footballers saw 27 points scored against them in the second half and suffered defeat 27-0 last Saturday at Renton.

The loss was the fourth straight for the Lutherans who meet Western Washington tomorrow in Lincoln Bowl.

The Ramblers' Royal Dotson took the opening kickoff in the second half and returned it 83 yards for a touchdown. Just a few seconds later Dotson broke off tackle for 32 yards and six more points. The try for point was good, and PLC trailed 13 to 0.

Two more touchdowns were scored by the speedy Ramblers when halfback Don Mann raced behind the Lutes' defense and hauled in two scoring passes for 19 and 17 yards.

Cagers Work Out Monday, Friday

Several new basketball aspirants are now turning out on Monday and Friday nights in the gym, according to basketball coach Gene Lundgaard.

Among these hopefuls are freshmen Larry Poulson and Gary Stubbs from Shoreline High School. Both of these boys stand 6'5". Doug Jackson (6-4) from Cheney, Washington; Dean Haner (5-7) from Lincoln in Tacoma; and Connie Selfors (5-11) are other freshmen hustling to land a position on this year's Lute team.

Junior letterman Denny Ross (6-3) is back after a hitch in the service and Bill Williams (6-4) from Valley Junior College in California will try to help bolster the Lutes this year.



POWDER PUFFERS DISCUSSING ETIQUETTE for tomorrow's game are: Left to right, Barb Aust, captain for the freshman girls; Bob Roiko, freshman coach; Chuck Myklebust, upperclasswomen coach; and Camille Emmerson, captain for the upperclasswomen. The game will start at 9:30 on the lower campus field. The freshmen will be out to avenge their loss last year to the favored foes.

Gladiators Are Underdogs Tomorrow; Looking for Upset in Homecoming Tilt

by John Hanson

Definite underdogs in tomorrow's homecoming tilt, the Lutheran gridders will be out to show the returning grads that this year's team is no pushover.

Luck has been short for the Lutes this year, but Coach Jim Gabrielsen has a real young team and by the showing they made during the first half against the Ramblers last week this may be the week for a big upset.

Early in September Gabrielsen was greeted by 53 men ready to knock heads for dear old Pacific Lutheran. After three short weeks of practice the Lutes opened the season in the King's X game with their cross-town rivals, the College of Puget Sound.

The Loggers were expected to have one of the better teams in the Evergreen Conference, but the Gladiators turned in a good battle against the bigger and more experienced Loggers. When the game ended CPS had won 9-6, but they knew they had met a better team than they expected.

The next week PLC traveled all the way to California only to drop a 29-0 contest to Humboldt State in a non-conference game. Many of the older Lutheran gridders said Humboldt had one of the strongest teams they had ever met during their term in college ball.

Next in line the Glads opened their Evergreen Conference schedule at Cheney against Eastern Washington College. After throwing away two chances to score from within the Savages' 10 yard line early in the first period, PLC never could get underway again. Eastern walked off with a 21-0 victory, and PLC returned home with three straight losses to face a strong Pacific University team the next Saturday.

Coach Gabrielsen saw one high point in the Cheney loss; that was the discovery of a freshman quarterback who could really throw the ball. Tom Gibbs, who graduated (Continued on page 6)

Lute Reviews Homecoming Grid Battles

By Bob Olsen

Tomorrow is the Gladiators' Homecoming game with Western Washington. This fact brings forth no unexpected emotions, except among those dichards who feel our Nordic team should have chosen the name Vikings 'way back when. But similar games in years past are interesting to look back upon.

In 1954, the last time Western was the Lutes' opponent at a Homecoming game, PLC beat them by an exciting 7-6 score.

The time before that, in 1950, they managed to edge past PLC by a mere 47-0. The staff is counting on history not to repeat itself.

Your reporter was present in 1947 when the Lutes downed the Vikings 6-0. The game was held in Stadium bowl in a torrential rain, which is unheard of in Washington. The ball was hard to control, so when one of the Glads tried a pass from his 20 yard line to a teammate on the other end of the field, the ball went over the goal post and the fence out of sight. Play was suspended while the ball was fished out of Commencement Bay.

SUPPORT OUR ADVERTISERS

C. O. Lynn Co.
 MORTUARY
 717 TACOMA AVE. Phone Market 7-7745

I.G.A. Foodtown

512 South 112th Street

GO -- TEAM -- GO

Look --- Brouse



Latest Paper-bound Books

ORDER GIFT BOOKS NOW



NEW EMBLEM JEWELRY

PLC Bookstore

MEDOSWEET
 ICE
 CREAM

TOWNE HOUSE

QUICK LUNCHES

Under New Management

FRESH
 DONUTS
 DAILY

3-IN-1 TO BETTER SERVE YOU

Standard Heating Oils -- Heating Equipment
 Heating Service

Enjoy That "PLUS" Service

MARV TOMMERVIK'S

PARKLAND FUEL OIL SERVICE

120th & Pacific Avenue

Phone LEnox 7-0256



5-Day Run of 'Aladdin' Starts Tuesday in CMS

"Aladdin and His Wonderful Lamp," the fall children's production sponsored by the PLC speech department, will be presented next Tuesday through Saturday on the CMS stage.

Curtain time for the first four performances is 1 p.m. On Saturday a special morning show sponsored by

the American Association of University Women, and open to the public, will start at 11:15. The curtain will go up for the final performance at 1:30 p.m. Saturday.

The three-act play, directed by Mr. Eric Nordholm of the speech department, will feature a Middle East motif. Magic, typical of productions in previous years, will again highlight the presentation.

In the cast of "Aladdin" are Mavis Everett, Dean Anderson, Glenn Arney, Jane Ross, Joanne Van Lierop, Nancy Kary, Kathy Belgum, Harry Sannerud, Sig Larson, Doug Anderson, Jack Holl, Judy McLean, Meg Evanson and Jon Olson.

All sound effects will be recorded and played through the tape recorder by Barbara Isaacson and Rod Nordberg. Carl Muhr is in charge of the lighting effects assisted by Bob LeBlanc. Rollie Wulf is stage manager for the production.



CAMPUS DECORATIONS evolved last night, despite typical confusion and late-hour work. In one of many construction crews Barbara Jackson strikes the first blow for the senior class while Roger Holtey and Kay Holme assist. The seniors transformed the CUB into a frontier village.

PLC Eleven Seeks Upset Saturday

(Continued from page 5) from Highline high school last year, moved into the starting quarterback position against Pacific U.

Gibbs at once went to work for the Lutes. Hitting ends Chuck Curtis and Dave Bottemiller with beautiful passes, the Lutes came back to give the men from Forest Grove, Oregon, a real battle before dropping a 14-6 game.

Not many people had any hope at all for PLC against the Seattle Ramblers the next week. But on a wind and rain swept field at Renton the Gladiators held the Ramblers scoreless through the first half. The Lutes defense was almost sensational in holding the speedy backs on the Seattle team in check.

In the second half the Lutes let down for just a second and the Ramblers took advantage of it. The final score was 27-0 for the Ramblers, but the Lutes had proved to themselves that they could play good ball.

Tomorrow afternoon, when Gabrielsen's young ball club faces almost exactly the same ball players that beat them last year in Bellingham, Pacific Lutheran fans may see a real upset.

Art Club Prepares For Halloween Party

"Bewitchin'" is the theme of the Halloween party sponsored by the Art Club to be held October 31st. Lots of entertainment and refreshments are in store for everyone in CB-200 on "Trick or Treat Eve."

Cover Design Contest Opens

Here is a chance to win \$5. Submit a cover design for the 1958-59 Artist Series programs. As many entries as desired may be submitted.

Entries should be turned in to Audry Hart in South C3 or to Al Stang in Old Main 424 by Monday, November 3.

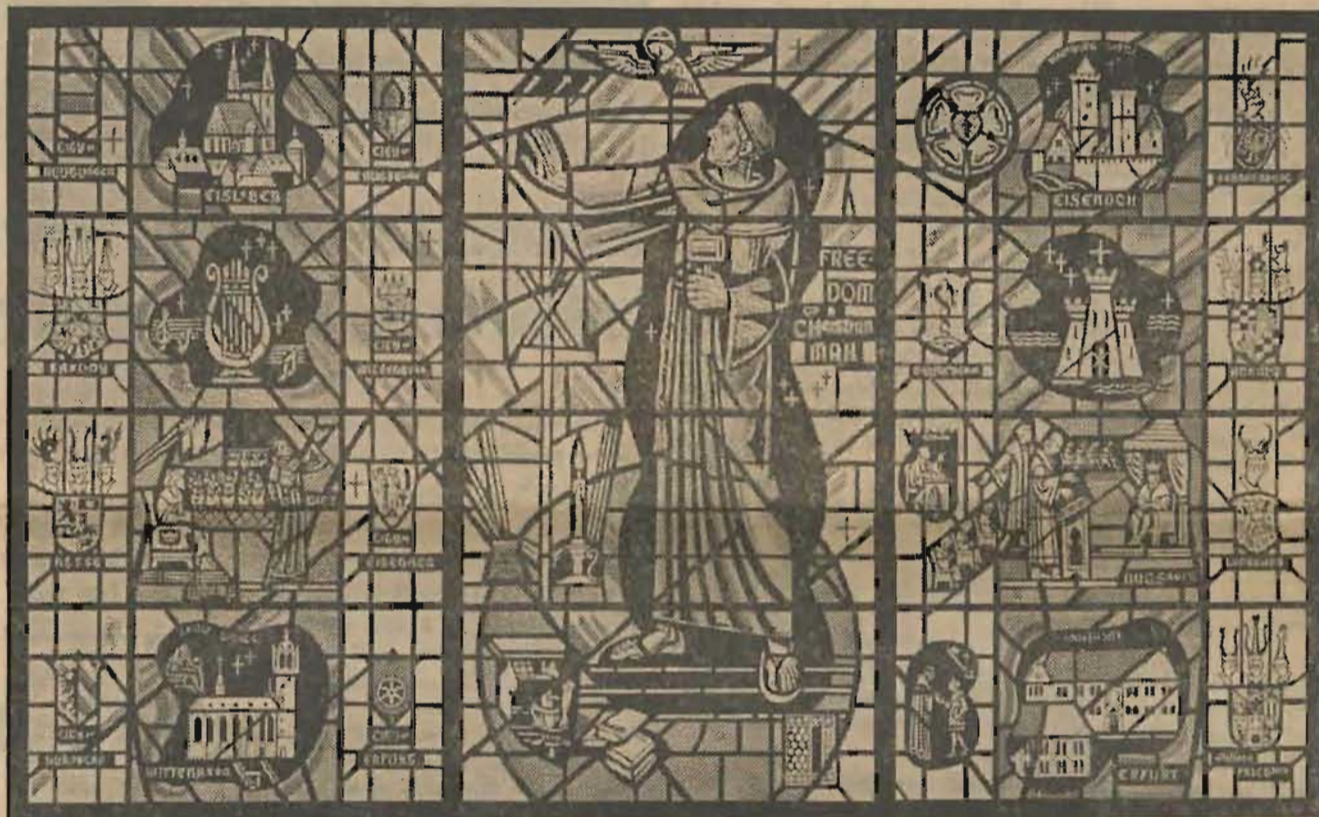
For further information see the posters in the Kiosk and the CUB.

Fleming Sez:

(Continued from page 3)

As Lady Macbeth said: Let me tell you about my apparition. . . Glad to see this paper campaigning against the bars across the windows in the coffee shop. Why, I can't even recognize a girl by her face. . . With all these western decorations up I keep having nightmares. I dream I'm completely surrounded by television sets. . . 1st Man: What's 5Q and 5Q? 2nd Man: 10Q. 1st Man: You're welcome. . . Mathematics jokes already Let's face it, I've got brains. I'm not just a pretty face.

Say, by the by, since this (with the help of a couple of teachers) is my last year here, (they say the 8th is the charm), I'd like to thank you people who have been loyal readers of my column. Sort of as "farewell performance" type act, I have compounded a booklet containing all my previous columns over the past years plus some "fresh" new material. This booklet consists of some of the best gags, giggles and guffaws ever stolen. The price is 50 cents. This is not a get rich quick type of thing for me as the cost of printing, etc., runs about that much anyway. It will be ready in about two weeks but if you'd place your order now I'd appreciate it since the printer would like to know approximately how many to run off. Mail orders invited. . . Well, that's it. See you tomorrow nite at the play. Promises a lot of laughs. Uncle Bob-Bob.



Reformation Window, in beautiful colors on stained glass, as seen in the new Lutheran Brotherhood Home Office building. It forms the west wall of our Martin Luther library which contains works on Martin Luther and the church.

What is the relationship between Lutheran Brotherhood and the Lutheran Church?

At a Lutheran Church convention, 40 years ago, in St. Paul, a prominent layman stood up to persuade the group that Lutherans should work together to help each other in time of trouble.

To make his point, he used a simple illustration: "Suppose two brothers made an agreement," he said. "Each promised that if the other died, he would provide for the widow and her children. That would be, in effect, an insurance contract."

A few days later the organization now called Lutheran Brotherhood was incorporated by church leaders. Its purposes were "to aid the Lutheran Church; to foster justice, charity and benevolence; to provide education . . . to encourage industry, savings, thrift . . . to furnish relief and protection to its members, their dependents and beneficiaries, through the payment of benefits in case of death or disability."

While its primary purpose is to give protection to

members of the Lutheran Church, the Lutheran Brotherhood also helps build churches by loaning money . . . helps train church leaders by providing scholarships . . . helps churches grow by giving money and supplies.

The Lutheran Brotherhood serves members of all Lutheran Churches with "Living Benefits."

Free Upon Request. Beautiful full-color reproduction of the Reformation Window above. Complete with historical legend. Large size (18"x24"). Heavy stock, suitable for framing. Mailed in tube. No obligation, of course. Send your name and address today.

LUTHERAN BROTHERHOOD

701 Second Ave. So. • Minneapolis 2, Minnesota

Living benefits for Lutherans through life insurance

ALL AROUND TOWN

We provide Checking and Savings Accounts and all other bank services for college students

84 & PACIFIC BRANCH
LAKWOOD BRANCH
WEST END BRANCH
E-STREET BRANCH
LINCOLN BRANCH
MAIN OFFICE

PUGET SOUND NATIONAL BANK
TACOMA'S FRIENDLY BANK
FREE CUSTOMER PARKING
MEMBER FEDERAL DEPOSIT INSURANCE CORPORATION