

SAGA

'43





OUR BOYS IN THE SERVICE

Carlton Anderson—Army Air Corps	Vernon Hopp—Army
Gustaf Anderson—Navy	Vesta Hughes—Army Air Corps
Elmer Antoneon—Army Air Corps	Harry Johnson—Army
Art Baganson—Army	Merton Johnson—Navy
Ted Baird—Army	Rudolph Johnson—Army
Robert Benson—Army Air Corps	Craig Johnson—Army
Buehl Borenson—Army	Gilbert Josund—Army
Al Bodvig—Army	Eldon Killo—Army
Conrad Braaten—Army Intelligence	Tom Lumsden—Army Air Corps
Harold Carlson—Army Air Corps	Harold Luwoos—Navy
Robert Connell—Army	Peter MacGregor—Army
Don D'Andrea—Navy	Fred Miller—Army
Kermit DuBois—Navy	Maynard Moen—Army
Ed Elstedt—Army	Gena Neat—Army Air Corps
Waldo Elstok—Army	Karl Olsen—Army
Elmer Erickson—Army	John Otness—Army Transport
Harry Erickson—Army	Alan Overland—Army
Don Erickson—Army	Carl Pederson—Merchant Marine
Clifford Farner—Navy	James Petersen—Navy
Roy Farrington—Army Air Corps	Paul Polillo—Army
Richard Friesth—Army	George Rainey—Army
Ronald Grobbs—Army Air Corps	Robert Roka—Army
Martin Gulhaugen—Army	David Roberts—Navy
Ken Halling—Army	Richard Rupert—Army
Don Hazelwood—Army Air Corps	Larry Sawday—Army
Erling Holand—Army Air Corps	Roy Schrandt—Army Air Corps
Narr Shaw—Army	



THE

SAGA





Published by Students of

PACIFIC LUTHERAN COLLEGE

Perkland, Washington



FOREWORD



Trying to carry on under the clouded skies of the world crisis has not been an easy or a pleasant task for student and faculty leaders. The year just completed has not been the most progressive in the annals of Pacific Lutheran College, the activity program not as full perhaps as we have known in other years. In spite of wartime restrictions, however, the light of Christian fellowship has not failed. To memories of your associations with the PLC family, the staff of the 1943 Saga would like to pay tribute in this book. May these memories last throughout the years.



DEDICATION

To Dr. O. A. Tingelstad, for 15 years the president of Pacific Lutheran College and on such the father of the P.L.C. "family," we dedicate the Saga of 1943. Prompted by reverence, love and gratitude, we offer this volume in the hope that it partly expresses the spirit of service that is the essence of the man's character. The demands made upon Dr. Tingelstad have been great under his guidance Pacific Lutheran College has prospered. Much has been required of him, this and more has he given. Faith in God his maker, and love for his fellowmen have been the sources of Dr. Tingelstad's strength.

May the Spirit that moves him touch each of us that we too may be inspired to greater service.



Queen Doree I can also teach school.



How about a NY?

Sorry, boys . . .





Seen in the art lab.

Chapel-goers proceed
to third period classes.



Anything to eat, Mitzi?





Anne Nelson, just posing.

Mirror, mirror on the wall . . .

At close of day . . .



IN MEMORIAM



Hans Hunskor

November, 1942

ADMINISTRATION







PRESIDENT TINGELSTAD

This year, SAGA seeks to emphasize and exemplify the dignity of service. Quite appropriately so, not only because millions are now in the armed service of our country, but also because leadership in a true democracy emerges as a fruit of loyal service, and because loyal service is an antidote to universal selfishness. Service is compatible with laudable ambition, whereas lust for power is not.

Christianity, recognizing Jesus Christ as the one Master and making love to God and fellow men the sum of all commandments, has dignified the status of the servant and exemplified in its adherents the nobility of loving service. Particularly appropriate to this hour of world-wide battle between systems of thought and ways of life are the words of the Saviour: "Ye know that the princes of the Gentiles exercise dominion over them, and they that are great exercise authority upon them. But it shall not be so among you; but whosoever will be great among you, let him be your minister; and whosoever will be chief among you, let him be your servant; even as the Son of man came not to be ministered unto, but to minister, and to give his life a ransom for many."

Each person has but one life to live, one life to invest. For this life he must ultimately give account to the Giver of all life. To give this life in service to God and humanity is the real fulfillment of life's true purpose.

O. A. Tingelstad.



DEAN RONNING

In these days of rapid changes we need to think clearly, lest we misinterpret present conditions. The momentous events of current interest, by focusing our attention upon the immediate, may develop in our minds a rationalized perspective. With the atmosphere permeated with prejudice and charged with emotion, we would do well to ponder our reactions and weigh carefully our conclusions. Granted, we live in a busy world where there is little time for reflection, yet is not the very purpose of attending college the development of an ability to think clearly and to act quickly upon demand?

Today we are here, where we may be tomorrow, we do not know. We may be moved across the continent or over the sea. We may find ourselves in strange surroundings. Carried forward by the stream of events, we may feel the helplessness of an individual lost in the mass. We may yield personal judgment and conscience to others. We may even lose that for which we strive unless our vision is clear and our hold in the shifting values firm.

Our school was founded to help young men and women know the truth which liberates the mind from ignorance and error. This is still our aim, because we believe in such freedom we can best serve God and our country.

K. Q. Ronning

ELVIN M. AERE, B.A. joined the P.L.C. teaching staff in 1939 ... a graduate of Concordia college ... teacher of history and languages in the high school department.



ALEXANDER V. ARLTON, Ph.D. C.T. Head of biology department ... noted for his bird imitations ... has written many textbooks ... received national recognition in his scientific research.

CLARENCE BAROFSKY ... Better known as "Baron" ... gathered together enough man-power for a football and basketball team.



MISS DORA A. BERG, M.A. Her patient and winning personality has encouraged many aspiring Raphaels ... noted for her interesting art exhibits.

MISS GRACE E. BLOMQUIST, M.A. Assistant Dean of Women since 1939 ... noted for her love of poetry and literature ... instructor of English ... outside interests include buying hats and boneblack riding.



MRS. ELIZABETH H. BONDY, M.A. handles the essentials of German and French in minds of students ... studied abroad ... has been at P.L.C. since 1929

MISS MARY A. BOTTEN, B.A. Assumed her duties as librarian in the fall of 1940 ... instructor of library science ... enthusiastic bicyclist.



MISS ALICE COLYAR, A.B. Arrived in time to direct women's athletics ... noted for her can-can songs and push-up exercises ... forced by her father's wishes to leave in April

MISS MAY F. CROSO, A.B. Instructor of English, Latin and history in the high school ... was teacher for five years at the Iolani School in Honolulu ... serves as house mother in the Senior Dorm.



MRS. MABEL METZ DITZ assumed her duties as teacher of voice in September, '42 ... endeavors to develop opera aspirations.

MICHAEL N. FRANCK, M.A. Ardent sympathizer with "divisive beads" ... experiences abroad give him a deep insight into world affairs ... instructor of history and American government.



MRS. RUTH S. FRANCK, M.A. Instructor of English and literature ... cultivates future journalists ... editorial adviser to Morning Star ... met and married Mr. Franck while teaching him the English language.

CARL S. FYNBOE, A.B. Makes contacts for financial aid to the school ... enthusiastic manager of show fairs ... was a member of the Danish Royal Guard.



OLAF M. JORDAHL, Ph.D. Teacher of physics and mathematics ... serves as liaison agent between college and military authorities ... everyone wears with bated breath for his chapel announcements.

MISS ASTRID E. KASEN, R.N. First resident nurse in the history of P.L.C. ... serves part time on the staff of Pierce County Health Department ... noted for rub-downs during the measles epidemic.



MRS. LORA B. KNEIDLER. Began her career at P.L.C. in 1921 ... she "mothers" the coeds as Dean of Women ... proudly traces her ancestry to Governor Bradford of early Massachusetts.

E. ARTHUR LARSON, A.B., C.T. Endeavors to maintain the Scandinavian spirit by teaching Swedish ... pastor of a Tacoma congregation ... enthusiastic fan at all football and basketball games.



LUDVIG LARSON. Succeeded Theodore Nelsson as business manager in January. His previous seventeen years of service and his abiding loyalty are P.L.C.'s great fortune.

MIKKEL LONO, A.B., M.Th. Stimulates interest in P.L.C. in the various congregations ... in charge of field service ... directs campaign for Golden Jubilee.



GUNNAR J. MALMIN, A.M., M. Mus. Baton wielder of Choir of the West since 1937 ... guided the choir through another successful season ... claims to be cultivating a boy's trio at his house.

MISS ANNA MARN NIELSEN, M.A. Supervisor of teacher training ... possesses a captivating smile and a delightful sense of humor ... proudly displays the products of her home state of Iowa ... underclassmen look forward to her classes.



JESSE P. PFLUEGER, A.B., C.S., C.T., D.D. As many interests as the initials after his name would indicate ... chief delight is the cultivation of the tuberous begonia ... instructor of Christianity, philosophy and speech.

PAUL K. PREUS, A.B. A P.L.C. graduate ... took over part-time duties as teacher in the high school department ... instructor of physiography and chemistry.



ANDERS W. RAMSTAD, M.C., C.T. Better known as "Rammy" among the students ... versatile ... has coached athletics ... teacher of chemistry and mathematics.

HERBERT R. RANSON, Ph.D. Stimulates students' interest along lines of literature and poetry ... devoted golf fan ... spends many leisure hours on the greens.



MISS GEORGIA RENEAU, Ph.M. Eminent teacher of sociology, philosophy and history ... an ardent lover of nature ... rises at an early hour to take care of her flowers.

W. D. KEITH REID, M.S. Of Scottish ancestry ... teaches business administration ... noted for his friendly personality.



WALTER C. SCHNACKENBERG, JR., A.B. Claims P.L.C. as his alma mater ... returned in September, '42, to take up residence as Dean of Men ... leads the boys in self government ... gained popularity through his abilities as pianist and chapel speaker.

PHILIP G. STROMBO, M.A. Arrived in August, '42, to assume his duties as director of physical education and athletics ... wooer of the poetic muse.



OLE J. STUEN, M.A. Former coach ... teaches Norse and "trig" ... business adviser to Mooring Mast ... supervises the library ... ardent enthusiast in agricultural arts.

EDVIN TINGELSTAD, M.A. His journalistic abilities have proved to be invaluable in the publicity department ... inculcates the theories of psychology in future pedagogues.



KARL E. WEISS, B.Mus. Graduate of the Eastman School of Music ... studied abroad ... spends several days of each week indoctrinating aspiring virtuosos.

BOARD OF TRUSTEES

Directly responsible to the College Corporation are the men who, as its elected representatives, constitute the Board of Trustees. As in other colleges this group is responsible for the following functions: it formulates the educational and financial policies of the institution; it provides money for the maintenance of the college; and it elects the instructors, administrative officers, and maintenance employees.

In addition, the Board of Trustees is responsible for the development and continuance of inter-synodical cooperation among the various church bodies that support our college.

For the first time, the California Conference of the Augustana Synod is now represented on the board. This is a visible symbol of the expanding sphere of official representation of P. L. C. Of most importance, however, the board on August 20 unanimously established four-year Liberal Arts status for the college. This means that this year for the first time students will be graduating with a Bachelor of Arts degree from the College of Liberal Arts. These evidences are further proofs of the ever widening horizon which the board plans for P. L. C.

The Board of Trustees includes: Rev. H. L. Foss, president; Rev. L. Ludwig, vice-president; Rev. S. J. N. Yivisaker, secretary; Rev. L. Rasmussen, treasurer; Mr. N. N. Hageness, Rev. M. J. K. Fuhr, Mr. George Knutsen, Mr. A. A. Mykland, Mr. Olaf Halvorson, Rev. R. A. Oistedal, Rev. E. C. Knorr, Mr. Arne Strand, Rev. Elmer M. Johnson, Mr. R. F. Engvall, Dr. O. A. Elmquist, Mr. John Tenwick, Mr. Ludvig Larson.

Rev. H. L. Foss, Rev. R. A. Oistedal, Rev. Leonard Ludwig, Mr. L. Larson, Rev. J. I. Yivisaker, Rev. L. Rasmussen, Rev. Elmer M. Johnson, Mr. George Knutsen, Mr. A. A. Mykland, Mr. John Tenwick, Rev. E. C. Knorr.



ALUMNI

Although they no longer attend school and sleep through their classes, the ex-students — alumni to you — are still very much with us. Many of them may be seen during the year wandering around the campus reminiscing, but their big opportunity to review acquaintances is the alumni reunion, which is held in the spring. At this time, the dormitory is open to all, and both women and men visit their old rooms looking at the same old beds and tables — but new occupants — and remembering where the bedsprings sag and where they had carved their initials on the tables. They can still say "Hello" to Mrs. Kreidler, and at once feel at home in Old Main. Because of gas rationing and war conditions, this year the alumni gathered in the hallowed halls of Old Main just for Sunday instead of for the usual weekend celebration.

Although Friday was not official Reunion, many grads attended the Saga Carnival on March 19. Sunday morning, all attended Church services at the Trinity Lutheran Church across the way, with Dr. S. C. Eastvold as guest preacher.

The early part of the afternoon was spent in looking for classmates and "pals," and in walking around the campus admiring the new shrubbery.

In the afternoon, the Choir of the West gave a concert for the grads. That night, about 210 people attended the annual banquet held in the basement of the Trinity Lutheran Church, in honor of Dr. Tingelstad, retiring president of P. L. C.

Speaking for the alumni, the Rev. Milton Nesvig voiced appreciation of Dr. Tingelstad's 15 years of faithful service to the school. The speaker of the evening was Dr. S. C. Eastvold, pastor of Eau Clair, Wisconsin, who later accepted the position of president of the college. He will take up his duties this summer. He was introduced by Dean Walter Schnackenberg, also a graduate of P. L. C.

Music on the program was supplied by Gerhart Svare, accompanied by Juleen Mattern at the piano.

Election of officers was held and the Rev. Milton Nesvig was elected president. He plans big things for the alums during the year.

Officers who have worked for the welfare of the graduates this year are Mrs. Norma Dahl, president; Miss Ovedia Hauge, vice-president; Mrs. Virginia Senner, secretary; and Roy Schmandt, treasurer.

We, the present students of Pacific Lutheran College, wish the alumni a prosperous year and hope soon to join their ranks. We realize the work that they have accomplished and are undertaking for the benefit of P. L. C.



President Hal Braun



1st row: Larsen, Miss Blomquist, G. I. Anderson, Person, Harshman. 2nd row: L. Anderson, Braun, Kylla, Fynboe, Thorpe.

A. S. B.

Although the student body has been badly depleted by students leaving for the armed forces, the current school year has been a very successful one. Both the faculty and the students should be commended for their initiative and cooperative spirit in fostering a more active student life on the campus this year. Those largely responsible are Harold Braun, president, Harold Carlson, vice-president, Gladys J. Andersen, secretary, and Sterling Harshman, treasurer. Working with them on the board of control were Arthur Larsen, advertising commissioner; Burt Thorpe, senior representative; Carrie Person, junior representative; Eldon Kylla, sophomore representative; Lloyd Anderson, freshman representative; and Carl Fynboe, high school representative. Miss Grace Blomquist was the adviser for the group.

Aims for the year were to increase interest in the spiritual life and in the building of character, the purpose for which the college was founded; to encourage more school activities; to create a better understanding between students and faculty; and to better our inter-collegiate relations.

Outstanding events sponsored by the student body were the All-School Mixer, Homecoming, and the Football Banquet held at Flou's to honor our team. Other highlights were the Lyceum programs, the Sago Carnival, Campus Day and the beautiful May Day festival, and on a grand scale the annual all-school picnic at Spanaway Park.

The students did their part for the Red Cross and Community Chest. A national organization was introduced on the campus this year: The World Student Fund. Its purpose was to raise money to aid students in war stricken areas.



Reese, Lee, Ludwig, Stendal



President Socha

A. W. S.

The Associated Women Students was headed this year by a variety of pulchritude in the form of Doree Socha, president; Noreen Stendal, vice-president; Mildred Reese, secretary; Lois Ludwig, treasurer; and Rhoda Lee, publicity chairman. The work of the year can be summed up to a "T," as the outstanding highlights of the AWS work consisted of two teas given during the school year.

To give the new Freshmen girls a hearty welcome to PLC, the club put on a "Little-Big Sister" Tea at which the girls were informed about the activities of the campus and what was to be expected in the school curriculum. The AWS is an organization that includes all the girls of the campus, and each girl enrolled in school automatically becomes a member.

The next tea was given in order to get the girls of the Delta Psi Kappa (Dorm girls) and the Delta Rho Gamma (Day girls) better acquainted. The Dormitory girls held open houses, and their rooms were visited by the day girls. In turn, the day room was open and the dormites visited the day girls' room below the chapel. From there both groups went to the senior dorms where refreshments were served. In this manner, the two groups of girls are brought together in informal gatherings so that they won't become too segregated.

The council of the AWS consists of representatives of all the girls' clubs on the campus as well as the governing heads.

CLASSES







1st row: Larsgaard, Church, Hopp, Harshman. 2nd row: Reese, Schmandt, Bruun, McDonald.
Absent: Bud Lutnes.

WHO'S WHO

Nine PLC students were honored this year by having their names and biographies in the 1942-43 edition of WHO'S WHO AMONG STUDENTS IN AMERICAN UNIVERSITIES AND COLLEGES. The faculty scholarship and curriculum committee recommended the candidates, who were later elected by the entire faculty.

The students chosen for this national honor were Helen Church, Tacoma; Florence Hopp, Chehalis; Ursula McDonald, Steilacoom; Mildred Reese, Kennewick; Harald Bruun, Seattle; Sterling Harshman, Lake Stevens; John Larsgaard, Seattle; Robert Lutnes, Longview; and Roy Schmandt, Anacortes.

The faculty selections were based on the qualifications of character, scholarship, leadership in extracurricular activities, and potentiality for future usefulness to business and society. Only juniors and seniors were eligible.

The nine students chosen have been active and popular on the campus this and other years. Helen Church and Robert Lutnes have participated in college debate tournaments. Harald Bruun is this year's president of the student body, and Roy Schmandt is a former A. S. B. prexy. Ursula McDonald directed the all-college three-act play this spring. Florence Hopp is a choir member and co-editor of the SAGA. Ster Harshman is now A. S. B. treasurer and well-known on almost all of the athletic activities on the campus. John Larsgaard has held many offices in religious societies among the students. Mildred Reese is editor of the Mooring Mast.

WHO'S WHO is a book published annually since the 1934-35 edition in order to give national recognition to deserving students in a free and impartial manner. It serves as an incentive and as a means of compensation for students. It is also a recommendation of successful students to the business and professional world and helps place many of them after graduation.

SENIORS

The senior class began its year under the direction of President Elmer Erickson. The vice-president was Wenzel Tiedeman, secretary-treasurer, Doris Socha; sergeant-at-arms, Noreen Stendal; senior class representative, Burton Thorpe.

During the second semester President Erickson's droll number came up. The organization, left without a chairman, elected Pat Iverson to this office. At this same time Ster Harskman was chosen to take the vice-presidency, which had previously been vacated when Wenz Tiedeman accepted a teaching position.

"Not quantity but quality" would best describe this class of ambitious PLU'ians, who though small in number contributed materially to the promotion of interesting activities on the campus. In this class were students who figured prominently in drama, debate, music, athletics; there were students whose leadership in college organizations was unchallenged and indispensable.

The Senior class is proud of its Doris I., beautiful queen of the May; Ster Harskman, brilliant student and versatile athlete; Pat Iverson, golden-voiced soprano; Roy Schmandt, promoter of better morale; Bud Lutness, tennis champion.

Elmer Erickson

Pat Iverson

Ster Harskman, Noreen Stendal, Doris Socha, Bur Thorpe.



GRADUATES

GEORGE ANDERSON, B.A. in Education ... Football 1, 2, 3 ... vice-president Sophomore class, 2 ... President of Lettermen's Club, 4 ... Captain of football team, 4.

GEORGIANA ATKINSON, B.A. in Education ... L.S.A. council, 3 ... D.R.G. vice-president, 3 ... President Glider Club, 3 ... Junior Class secretary-treasurer, 3 ... Choir of the West, 3 ... Drama Club, 3.

CHARLES CVETICH, B.A. in Education ... Transfer from Clark Junior College ... Delta Beta Upsilon ... I.P.U. secretary-treasurer, 3 ... Intramural softball and basketball, 3, 4 ... Navy Club, 4.

ELINE KADEN, Three-year Graduate ... Senior representative to D.R.G. council ... Delta Rho Gamma ... Viking Club ... I.P.H. ... Campus Devotions.

AVIS HOVLAND, Three-year Graduate ... Choir of the West ... D.R.G. secretary, 3 ... W.A.A. ... A.W.S. ... L.D.R.

PAT IVERSON, B.A. in Education ... Transfer from Mount Vernon Junior College ... Choir of the West, 3, 4 ... Mixed quartet, 3, 4 ... President Senior class, 4 ... Vice-President L.D.R., 4 ... Representative to L.S.A., 4 ... Dramatics, 3, 4.

LAURA MOUTSAER, Three-year Graduate ... D.R.G. ... A.W.S.

VIVIAN PEARSON, Three-year Graduate ... German Club, 2 ... I.P.H. ... D.R.G. ... Choir of the West, 1, 2, 3.

DOREE SACHS, B.A. in Education ... Transfer from C.P.S. ... D.R.G., 3, 4 ... Alpha Psi Omega, 3, 4 ... President A.W.S., 4 ... May Queen, 4 ... Senior Class secretary, 4 ... May Day Attendant, 3.

NOREEN STENDAL, B.A. in Education ... Transferred from C.P.S. ... May Day Attendant, 3 ... Vice-President A.W.S., 4 ... Secretary D.P.K., 4 ... Linna, 4 ... Co-editor of Saga, 4 ... Sergeant-at-arms Senior Class, 4.

BURT THORPE, B.A. in Liberal Arts ... Acting and business manager in two all college productions ... Senior Class Representative to Board of Control, 4 ... Alpha Psi Omega const. 3 ... Lettermen's Club ... Navy Club ... Viking Club, 2 ... Saga business staff, 4.

MARJORIE WENTWORTH, B.A. in Education ... Choir of the West, 1, 3 ... Orchestra, 1, 2 ... D.R.G. ... L.D.R., 1 ... A.W.S.

MINNIE BECKER, B.A. in Education ... Transfer from San Diego ... D.R.G. ... Takes time out from her home life to further her education.

HELEN CHURCH, B.A. in Education ... Chairwoman of Glider Club, President, 3 ... Secretary A.W.S., 2 ... Prominent in debate and drama ... Choir, 1 ... Alpha Psi Omega ... Campus Devotions ... D.R.G. ... W.A.A. ... Who's Who, 4.

STERLING HARRISMAN, B.A. in Education ... Football ... Track ... Golf ... Who's Who ... Saga, 4 ... President of Navy Club, 4 ... President of Linna, 4 ... Inspirational award in football, 4 ... President of S.P.O., 3 ... Vice-President senior class, 4 ... Lute Boosters, 4.

FLORENCE HOPP, B.A. in Education ... Active in music ... Choir of the West, 1, 2, 3, 4 ... Quintet, 2 ... Quartet ... Orchestra, 3 ... Mooting Mast Staff, 1, 2 ... D.R.G. president, 4 ... Linna secretary, 4 ... Co-editor of Saga, 4 ... Who's Who, 4.

RAY KAPUS, B. A. in Education ... Basketball, 2, 3, 4 ... Football, 1, 2 ... Lettermen's Club ... S.P.O., 1 ... D.B.U., 2, 3, 4 ... President D.B.U., 4 ... Leader's Council, 4 ... Intramural softball, 1, 2, 3, 4.

URSULA McDONALD, Three-year Graduate ... Director of one act play and all college play, 4 ... Treasurer of D.P.K., 2, and President, 3 ... Debates, 2, 3 ... President of Alpha Psi, 4 ... Who's Who, 4.

BERNICE PETERSON, Three-year Graduate ... D.R.G. ... Junior Representative, 4 ... Cassara Club ... Glider Club ... W.A.A.

DOROTHY PETERSON, Three-year Graduate ... D.P.K., 1 ... D.R.G., 1, 2, 3.

BEANS STON, B.A. in Liberal Arts ... Lute Boosters, 4 ... Linna ... Bands ... Charter member of Ski Club ... Business Manager of Saga, 4.

RUTHMARIE TENNENT, Three-year Graduate ... Junior Representative D.R.G. ... Treasurer D.R.G., 3 ... Secretary Glider Club, 3 ... Mooting Mast staff, 2 ... Girls' Glee Club, 1.

NO

ANDREW EDWARDS, B.A. in Liberal Arts

ELMER ERICSON, B.A. in Education

ROBERT LUTNESS, B.A. in Liberal Arts

ROY SCHMANDT, B.A. in Education

WENZEL TIEDEMAN, B.A. in Liberal Arts





1st row: Gullberg, Hoskins, Person, Daddow, Ludwig, Whitehead, P. Anderson. 2nd row: Gregerson, Langton, Elvira Harstad, Owen, Rod Lee, Harry A. Johnson, Brown. 3rd row: Knutson, McKinley, Braut, Luoma, H. H. Erickson, P. Polillo, Reitz, Larsgaard, G. Lider, Pflueger.

G. Lider, Langton, Atkinson, Person, Elvira.

JUNIOR CLASS

"Though small in number, their deeds are great." This should be the motto of the Junior class, whose membership is inexorably dwindling. Time and the armed forces have taken their toll so that at the close of the year, the girls outnumber the boys.

The name, "Junior Class," is still comparatively new, for PLC has been an accredited four year college only since 1940. The last three classes set the pace, but this year's class broke the record for achievements. If one were to list the outstanding students, he would have to include the whole class. Noteworthy are Mildred Reese, editor of the *Mooring Mast*; Harry Hoff, *Mooring Mast* writer and artist; Alice Pflaum, president of W. A. A.; Lee Rod, assistant director of the all school play; Gerry Lider, Les Whitehead, Roy McKinley, Hal Braun, Guthorm Gregerson, Dick Langton, and Paul Pflueger — athletes; Paul Pflueger also an artist and electrician; Gerry Lider, Johnny Larsgaard, Rhoda Lee, Lois Ludwig, Isabel Harstad — choir members.

Avis Hoyland, Marjorie Wentworth, Laura Midtsater, Ursula McDonald, Vivian Pearson, Helen Church, Georgiana Atkinson, Bernice Peterson, Ruthmarie Tennent, and Dick Langton were cadet teachers from the junior class. They will graduate under the accelerated teacher training program.

Officers for this year were Gerry Lider, president; Dick Langton, vice-president; Georgiana Atkinson, secretary-treasurer; Waldo Elelson, sergeant-at-arms; Carrie Person, representative to the Board of Control.

Those juniors in the service include Waldo Elelson, Jim Peterson, Harry Erickson, Erling Holand, Tom Hoskins, Tom Lumsden, Paul Polillo, Bob Reitz, and Harold Carlson.

During the spring semester the juniors sponsored in the college gymnasium a hilarious mixer that featured a musical melodrama written and produced by Georgiana Atkinson with her troupe of players.

SOPHOMORE CLASS

The Sophomore class, older and wiser with a year of college safely behind, sallied forth on its second year under the capable leadership of President Gus Anderson, Vice-president Nancy Lund, Secretary-treasurer Anne Nelson, Sergeant-of-arms Kermit DuBois, and sophomore class representative Eldon Kylio. However, throughout the year war and marriage beckoned to the class leaders, and the governing head gradually narrowed down to Anne Nelson, who carried on for the duration of the school year.

The annual mixer, held in the celebrated PLC gym, had as its motif the Halloween spirit, and the evening program was headed by Albert "Muscles" Kuhn. Although the class functioned successfully as a whole, it will be remembered more for its outstanding members who have made a place of honor in PLC halls of fame. Gladys Anderson, who was publicity manager for the students during the past year, and also general chairman of the Saga Carnival. In the athletic field Eldon Kylio, Jack Bratlie, Don D'Andrea, Kermit DuBois, Ted Iufer, Ves Hughes and many more will take their place in the annals of PLC lettermen. With a creditable display of dramatic talent, Ann Nelson and Lloyd Nyhus took the leads in the all-college play, "Lease on Liberty." Showing that sophomores can speak intelligently, Eunice Knutson copped high honors in debate and impromptu speaking. Not to be outdone in brain work, the sophomore class produced honor roll students such as Margaret Davidson, Marjorie Edghill and Charlotte Swanson, who consistently placed high in scholastic honors. The journalistic field was filled by Marv Shaw, assistant editor of the Mooring Mast, and Art Larson, sports writer.

Statistics show that the class has become considerably smaller since September, but in spite of this and although there was not the chance to do as much as in the past, the work of the class of '45 in the year 1942-43 can be classified as "well done."

1st row: G. J. Anderson, Hill, Gargas, Bernhartson, Cook, A. Johann, Seaburg, Davidson, E. Thoren. 2nd row: Kennedy, Moe, Brodland, Balas, Sidsfara, H. Thoren, Reiman, M. Paterson, G. Birkestol, Nelson, Fosse. 3rd row: C. Johann, Gullberg, Kuhn, Iufer, Schmidt, Nyhus, Bratlie, Shaw, Holm, Otness, Gardlin, Martin, Erickson, A. Reitz, A. Birkestol, Gulhaugen, Swanson, Edghill, Hornshuh, Larson.

Nelson, Kylio





1st row: Hagen, Youngren, N. Lidar, Riaz. 2nd row: Thonle, Hatlen, R. Knutson, Fjotland, Meyers, Lien, Soltnan, H. Peterson, Burslett, Wrigley. 3rd row: Miller, Mykland, Jorgensen, Thorsdottir, Severson, C. Johnson, T. Carlson, Satern, M. Hanson, M. Hall. 4th row: E. Larson, B. Haupe, V. Hopp, Engling, Snelsen, Bodvig, Ormsa, Hasselwood, Lorange, West, L. Anderson, Hestadst, Herren, Maline, Torvend, Hawley, G. Fahllo, Neusegard.

FRESHMAN CLASS

The Freshman class which entered school last fall had representatives from many parts of the country, even from as far away as Iowa and Alaska. But whether they came from far or near, it was not long before they felt very much at home with the older P. L. C. students.

Early in the year the class displayed a good deal of talent at a freshmen mixer, which was part of their initiation.

Many of the freshmen were prominent in the activities of the school. Those taking part in athletics were Glen Halby, Alvin Bodvig, Dick Supers, Don Hasselwood, Glenn Neal, and Tom Engling.

All four of the yell leaders were chosen from the freshman class — Evan Carlson, king, Willy Holt, queen, Don Hasselwood, duke, and Harold Roger, duchess. They displayed much pep and enthusiasm at the games.

Ruth Knutzen, freshman, was the school's choice for the bearer of the 530 of Saga Queen.

On May Day the class was represented in the festivities by two blondes — Dora Jurgensen and Mildred Hanson.

The following officers were chosen to lead the class: George Sola, president; Betty Hatlen, vice-president; Joan Satern, secretary; Eunice Torvend, treasurer; and Alvin Bodvig, sergeant-at-arms. When the president was called into the Army at mid-year, Betty Hatlen took over the presidency, and Ruth Knutzen was chosen vice-president. Representing the frosh at the Board of Control meetings was Lloyd Anderson's job, but he also had to resign, as he enlisted in the Navy shortly before the year was over.

We are all hoping that many of these young people will return next year to carry on at P. L. C. despite the fact that so many have been called into the service of our country. We hope and pray that they may always do their best whether it be in their school work or in the armed forces.

HIGH SCHOOL

This year was one of marked progress for the high school, thanks to the combined efforts of the students and faculty. Among the activities introduced for the first time this year were the production of two plays, under the direction of Helen Church and Ursula McDonald, and an active program of athletics, sponsored by Ster Harshman and Dean Schnackenberg. The high school presented to the PLC student body two flags to be placed in the Chapel—the Christian banner and the Stars and Stripes.

High school students taking prominent parts in school affairs were: Choir members Anita Norma and Carl Fynboe; pianist, Pat Thomas; vocalists, Pearl Stauffacher, Norman Jensen and Norman Hagen; ballet dancer, Celeste Tohill; and trumpet player, Albert Nichols; and representatives at the May Day festivities, Janet Hauge and Janice Kittelson.

Like the college the high school lost several boys to the services of our country. Delmar Knudtson is stationed at Camp Switt, Texas; Harold Luvaas is stationed at Farragut, Idaho; Del Sprague and Darrell Christianson are in the Navy. Delmar was a member of the Choir and of the football squad. Harold Luvaas was also in the choir. Of the forty-one members of the high school the following eight are graduating: Betty Anderson, Jewel DeBaut, Norman Hagen, Janet Hauge, Norman Jensen, Mildred King, Janice Kittelson and Anita Norman.

The officers for the past year were Norman Jensen, president; Mary Ruth Lona, vice-president; Carole Westerdale, secretary-treasurer; sergeant-at-arms Charles Billingsley. Representative to the Board of Control for the past year was Carl Fynboe. The principal of the high school for the year was Prof. Edwin Tingelstad.



Betty Anderson
Norman Hagen
Norman Jensen

Jewel De Baut
Janet Hauge
Janice Kittelson
Anita Norman



1st row: Westerdale, Nichols, Jensen, Bockner, N. Hagen, Martens, Lona, Wenham. 2nd row: Burman, Riel, O'Neill, Ballefson, Leask, Bell, Boynton, Kittelson, J. Hauge. 3rd row: Gilje, Billingsley, Fynboe, Storvick, Laws, Luvaas, Parrish

Officers
Fynboe Westerdale Hagen
Billingsley Jensen

ACTIVITIES







MUSIC

Although musical activities suffered many changes throughout the year, students of music and music lovers continued to make progress in this field of endeavor. Mr. Carl Weiss, teacher of piano and director of music at PLC, was assisted by Professor Gunnar J. Malmin, who continued to direct the choir, and Mrs. Mabel Metz Dilts whose voice students by their fine singing commended her work. Three public school music teachers were produced from this year's class — Pat Iverson, Marjorie Wentworth, and Florence Hopp. When Rudy Johnson and Harry Soloos were drafted, not only were two excellent soloists lost, but a good mixed quartet was broken up. The mixed quartet became a girls' trio consisting of Pat Iverson, Isabel Harstad, and Hjordis Rogen. Albert "Muscles" Kuhn and his violin provided fine entertainment at many activities until he checked out in March.



1st row: Director Malmin, Lien, Huff, B. Knutzen, Wrigley, E. Thoren, Cook, Ludwig, R. Lee, Norman, Davidson, Church, Atkinson, Manager Fynboe. **2nd row:** H. Lider, Rogen, Hopp, Jurgerson, Nelson, Harald, Iversen, W. Hornshuh, Wentworth, Bursloff, Revland, Schock. **3rd row:** M. Petersen, Thonle, D. Knudtson, G. Lider, Nordeng, Kuhn, P. Anderson, C. Johnson, Whitehead, Arton, E. Anderson, Flodstrom, Pearson. **4th row:** A. Larson, H. Carlson, Gulhaugen, A. Reitz, R. Johnson, Solcos, Kylla, Wright, Braaten, J. Petersen, Larsgaard, Fynboe, Holm, Nyhus.

CHOIR OF THE WEST

Despite unavoidable obstacles, such as boys' lost to the armed forces, gas rationing, and defense work, the "Choir of the West" under the direction of Professor Gunnar J. Malmin came through the year with flying colors.

For the last fifteen years the Choir has gone on an annual tour, and this year, even though some boys had been drafted and the usual bus couldn't be chartered because of gas rationing, our leader was determined not to give up the Sixteenth Annual Tour. Inquiries were made, and the itinerary having been planned by Carl S. Fynboe, business manager of the Choir, on the morning of March 12, forty singers left by train to "points north."

For five days, concerts were given in Seattle, Everett, Stanwood, Mt. Vernon, and Bellingham; in each city the choir captivated audiences, won loud applause, and brought great inspiration to all as they ministered in song.

For the big Everett concert in the Civic Auditorium, Uncle Sam granted the Choir a special favor. Just two weeks before the tour all Army Reserves had been called out and stationed at Fort Lewis, but on this night four—Eldon Kylla, Rudy Johnson, Marty Gulhaugen and Harry Solcos—were given leave to sing for this one night. What an inspiration the choir got as they had the moral support of these four choristers garbed in khaki.

Other concerts were given throughout the school year at Tacoma's First Lutheran Church, McChord Field, Fort Lewis, and over KMO. When singing for the soldiers, the choir was often transported in convoys of U. S. Army trucks.

The climax of the year came when the choir sang Mozart's "Requiem" with the Tacoma Philharmonic Symphony May 30th under the direction of Eugene Linden.

Officers for the choir were President Gerry Lider, Vice-president Rudolph Johnson, Secretary Florence Hopp.



Left to right Thorpe, Shaw, H. Hoff, Bruun, McDonald, Rod,
~~Olson, Peterson, Schmidt, A. Johnson.~~

Officers: McDonald, Thorpe, Sachs

ALPHA PSI OMEGA

Enjoying the honor of being the only national organization on the campus Alpha Psi Omega is also one of the most active clubs.

Each month some special activity is provided for its members, such as attending various plays held in the city, pledging and initiating new members, or holding social meetings.

The most outstanding activity of the organization this year was the sponsoring of the all-school play. Ursula McDonald, Cost Director of the Theta Pi Cost of the Alpha Psi Omega, was chosen to direct the play, with Lee Rod as assistant director, and Mrs. Grace Blomquist as locality adviser. Thanks to such capable direction and the helpful cooperation of all the members, the undertaking proved to be very successful. In taking over such a project the organization provided not only experience for its members, but also good entertainment for the students and many friends of the college.

Membership in this honorary dramatic fraternity can be obtained only through dramatic efforts approved by the national organization, and election to membership must be by a unanimous vote of the members.

Honors for a very successful year go to Ursula McDonald, Cost Director, and her fellow officers — Oorve Sachs, Cost Stage Manager, Jimmy Peterson and Burt Thorpe, Cost Business Manager.

Members of this organization for the entire year have been Harold Bruun, Hartman, Hall, Robert Lutnes, Adeline Johnson, Ursula McDonald, Jimmy Peterson, Ailsa Pflaum, Paul Pilveger, Lee Rod, Oorve Sachs and Burt Thorpe. Novices joining in February were Helen Church, Eunice Knutson, Roy Schmandt, and Mary Stow, and in May, Anne Nelson, Woyd Nyima and Virginia Sidsky.



Ursula McDonald
I'Lee Rod

E. Knutzen, Nelson, Nyhus

Nienstedt, Youngren, Nelson, Nyhus, M. Holt, Bruun, E. Knutzen

Thorpe, Sidders, G. J. Anderson, Belew, McKinley, Iverson, Pflueger,
P. Anderson, Hill, Nordberg, Morrow, H. Holt

"LEASE ON LIBERTY"

For the first time in recent years a completely student-produced three-act play was presented on April 9, under the sponsorship of the Theta Pi Cast of the Alpha Psi Omega. This group unanimously chose Ursula McDonald to direct the play, and she was assisted by I'Lee Rod. Burt Thorpe had charge of the production end of the presentation. Miss Grace Blomquist was faculty adviser.

The play presented was Dana Thomas's "Lease on Liberty," which is a patriotic play dealing with the pre-war problem of deciding between isolationism and interventionism. Harold Bruun gave an excellent performance as Matthew Powell Sr., the nationally known crusader and ardent for peace, who has been hoaxed by a group of communists into aiding their plans to keep America out of the war.

The romantic leads were carried by Lloyd Nyhus, as Matt Powell, Jr., and Anne Nelson, as Grammy's youthful companion. Fay Latmer Euloe Knutzen appeared as Mrs. Bronson Penfield, "Grammy" to her family, who had enough patriotic zeal to fight several wars. Helen Youngren played the role of Mrs. Powell, and her two younger children Ilnx and Ted, were Mildred Holt and Herb Nienstedt, respectively. The lovable Russian spy was portrayed by Roy McKinley. Magrilla, the Powell's colored maid, was capably handled by Patricia Iverson.

Other members of the large cast were Norman Holt, Catharine Morrow, and Margaret Hill as newspaper reporters; Burton Thorpe and Virginia Sidders as two naive, scheming communists; June Belew, Gladys J. Anderson, Peter Anderson, Paul Pflueger, and Albert Nichols in supporting roles.

The committees working under Burt Thorpe were composed of Gladys J. Anderson, programs and tickets; Norman Holt, publicity; and Evon Carlson, house. Hal Bruun was stage manager, assisted by Goose Gregersen, Roy McKinley, and Burt Thorpe. Paul Pflueger and Bob Newton handled the electrical part of the set.

Helen Church managed the properties, with the assistance of Virginia Seeburg, Dorothy Nieman, and Ruth Nestegard. The set was in charge of Alice Pflaum and Lois Ludwig.

Doree Sachs, Rhoda Lee, and Earl Gullberg took care of the costumes, and the make-up committee was headed by Norma Linder, aided by Ruth Knutzen, Marion Butler, Bernice Bernhartson, and Corinne Fosso.



Campus Broadcasters: Nee, Shaw, Reese, Thorpe.

"More Blessed": Gilje, Kittelson, J. Hauge, Nichols.

"Teapot on the Rocks": Fynboe, Pihl, Hagen, Norman, Boynton, Westerdale.

McDonald

Church

CAMPUS BROADCASTERS

Through the efforts of Production Manager Burton Thorpe, PLC has presented several broadcasts over the air on the Campus Workshop program which is sponsored by the Tacoma City Light Co. Holding down the position of announcer during the year have been Marvin Shaw, Charles Nee and Burt Thorpe. Script-writer has been Mildred Reese.

HIGH SCHOOL PLAYS

"MORE BLESSED"

The Christmas play, "More Blessed," by Paul Matel, was coached by Helen Church. The main characters in this production were two young people of the Prescott family, played by Gloria Berman and Albert Nichols. Janet Hauge and Stanley Gilje portrayed the parents, Mr. and Mrs. Prescott, and the part of Aunt Hilory was taken by Janice Kittleson.

"THE TEAPOT ON THE ROCKS"

The one act play, "The Teapot on the Rocks," by John Kirkpatrick, was coached by Ursula McDonald. The chief characters in this comedy, two owners of a tearoom, were played by Carole Westerdale and Anita Norman. Others in the cast were Pat Boynton as Mrs. Carstairs, a society matron; the winner of the heroine's hand, Norm Hagen as Aiec, the gasman; and Ivar Phil as Willy, the grocer-boy.



Two one act plays, "The Teapot on the Rocks" and "More Blessed," were given by eleven talented high school students this year at a Christmas program, presented on December 16, in the college gym. Putting the junior The spians through their paces were directors Ursula McDonald and Helen Church, students of drama production in the college of education.

Musical selections on the program included a trumpet solo by Al Nichols, vocal solos by Anita Norman and Harold Luvaas, and a male quartet consisting of Norman Jensen, Carl Fynboe, Norman Hagen and Delmar Knudtson.

DEBATE

At the beginning of the year the debate club with its nucleus of only two veteran members faced the problem of having no regular coach. In spite of the odds, however, this year's squad attained a splendid record.

After holding practice debates among members of the new squad, two varsity teams were finally chosen—the boys' varsity consisting of John Baglien and Al Nordeng, while Ursula McDonald and Helen Church made up the girls' varsity. These two teams represented our college in the first event of the debate season, a practice tournament between C.P.S., Seattle Pacific college and P.L.C., November 14 at C.P.S. Miss Blomquist accompanied the debaters. Both P.L.C. teams succeeded in winning three out of four debates, which enabled them to tie with a C.P.S. team for top honors. Helen Church won first place in the women's impromptu.

With the help of Dean Honning and Mr. Ed Tinglestad, the plucky debate squad continued its work, and in January attended a practice tournament at Seattle Pacific college.

Feeling as though they had gained valuable experience, the debaters began plans for a tournament to be held here at P.L.C. February 18. Just before this time, however, Ursula McDonald found it necessary to give up debating. Eunice Knutson was selected to fill the vacancy.

Under the leadership of Debate Manager Helen Church and with Dean Honning's assistance, plans for the P.L.C.-Washington Tournament progressed. Top-notch teams from Washington State and C.P.S. attended this event, and the debating results showed a tie for first place between the W.S.C. girls' varsity team and the girls' team from P.L.C.

The next day, February 17, the debaters journeyed to McMinnville, Oregon for the Pacific Coast Inter-collegiate Forensic Tournament.

The girls' team entered in the debate semi-finals, Eunice Knutson in the semi-finals for junior impromptu, and Helen Church in the senior impromptu semi-finals; the boys' team missed the semi-finals by one point. In the Congress of Human Relations, which proved to be the most successful ever held at Linfield, Al Nordeng and John Baglien distinguished themselves by presenting a bill which was among a selected few to be sent to Washington, D. C.

Making the trip to McMinnville with the debaters was Miss Botten, who proved to be a delightful companion and a loyal helper.

March 19 and 20 the debate squad competed in the Puget Sound Junior College Forensic Tournament held at C.P.S. Joining the group for this event was Evan Carlson, who participated in impromptu and extemporaneous speaking. This, the last tournament of the year, proved to be the most successful for P.L.C. debaters as they returned with three trophies — Eunice and Helen winning first place in women's debate, John Baglien winning first place in men's impromptu, and Eunice taking a second in women's impromptu.

This year's question was whether or not a world federation should be established after this present war, with the United Nations as the basis of such an organization.



Al Nordeng, John Baglien
Evan Carlson

Ursula McDonald, Eunice Knutson, Helen Church



Noreen Standal, Co-editor Florence Hopp, Co-editor
Mark Stuen, Business Mgr Carl Olson, Ad Manager

Saga Editorial Staff: Harshman, E. Hob, Langton,
G. J. Anderson, Rod, Swanson, Ludwig, Morrow
Saga Business Staff: E. Carlson, Balme, Thorpe, Leo,
Gyllberg

SAGA

The staff of the 1943 Saga in its dedication pays homage to Dr. O. A. Tingelstad, PLC's retiring president. This expression to him is one of sincere appreciation for his many years of faithful service.

The *Saga* staff was headed by co-editors Florence Hopp and Noreen Standal, who were senior students in the College of Education. The editorial staff appointed by the editors included the following: Lois Ludwig, in charge of the administration; Lee Hod and Catherine Morrow, activities; Dick Langton, men's athletics; Gene Peterson and Alice Ploum, women's sports; Gladys E. Anderson, campus life; Harry Holt and Siv Harshman, besides sponsoring a successful snapshot contest arranged the photography. To Carl Olson the editors are particularly indebted; he gave many of his hours "shooting" campus scenes with his candid Argus.

The financial end of the *Saga* was handled by Business Manager Mark Stuen, senior in the college of liberal arts. His right hand man, Advertising Manager Carl Olson, resigned *Saga* duties for service with Uncle Sam's armed forces. Other advertising assistants were Burl Thorpe and Norma Holm. Evan Carlson and Earl Gulberg, as circulation managers, carried on a well-run subscription drive.

Miss Doris Berg, Dr. Herbert Hanson and Mr. O. J. Stuen were the *Saga* advisers.



Mooring Mast Editorial Staff: 1st row: Daddow, Swanson, Mykland, Knutzen. 2nd row: E. Carlson, A. Lanson, Torvend, H. Hoff, C. Johnson

Mildred Reese, Editor

Marvin Shaw, Asst. Editor

Betty Bates, Business Mgr.

Mildred Brodland, Asst. Ed.

Mooring Mast Business Staff: G. Birkestol, E. Knutson, A. Birkestol, G. J. Anderson, Sidders.

MOORING MAST

THE MOORING MAST, PLC's popular student-produced paper, served a more important purpose than ever this year. With so many students leaving for the military services, the bi-monthly publication made its presence felt not only on the campus but also in many army and navy training centers.

The MAST made it possible for students and former students alike to follow the progress of and keep in touch with their ex-classmates and, as a result, the paper was as helpful as it was interesting.

Responsible for the paper's success was capable Mildred Reese, junior, who, despite the army's demands on her staff, always managed to salvage enough reporters to send the MAST to press. Mildred lost her associate editor, Marv Shaw, to the army at the end of the fall term and chose John Baglien and Norm Holm to share the responsibility of this position during the spring semester.

Heading the business staff was sophomore Betty Bates who saw to it that entries in the big, black book weren't recorded with red ink. Betty was assisted by Mildred Brodland, who had the official title of associate business manager.

Also on the business staff were Eunice Knutson, business secretary; Al Nordeng, advertising manager; Virginia Sidders, circulation; and Grace and Annebelle Birkestol, in charge of servicemen's circulation and exchange, respectively. Mr. Stuen acted as adviser to the business staff.

The Journalism classes were the backbone of the editorial staff. Under the watchful eye of Mrs. Franck many styles were developed and injected into the paper.

Art Larson wrote the sports column, and humor was supplied by Harty Hoff, and an assortment of students who are still running at this writing.



1st row: L. Johnson, King, Herren, Atkinson, Hovland, Pearson, Wentworth, Person, Pilaum, Bernharlsen, Wenham, Lono. 2nd row: Becker, Baird, H. Peterson, Christiansen, Myers, Flodstrom, Soltman, Rogen, Garges, Hill, Martens, H. Thoren, S. Severson, Tennent. 3rd row: A. Severson, Hopp, Kjesbu, Hagen, Parrish, Edg-hill, W. Hornshuh, M. Peterson, Reiman, A. Johnson, Cock, B. Peterson, Middwater, E. Thoren.

D. R. G. Cabinet Hovland, Saltman, A. Johnson, Pres Hopp, B. Peterson, Atkinson, Hagen, Hill, Rode, Berger



DELTA RHO GAMMA

Delta Rho Gamma, the day girls' organization, under the leadership of Florence Hopp, completed a successful, active and interesting year.

With their annual installation banquet early in October, the D.R.G. girls launched out upon the new school term. New members were given a formal initiation.

Assisting president Florence Hopp with the many activities were: Georgiana Atkinson, vice-president; Avis Hovland, recording secretary; Margaret Hill, corresponding secretary; Ruthmarie Tennant, treasurer; and Bernice Peterson, Sr., Elene Hagen, Jr., Arlyne Johnson, Soph. and Marion Soltman, Fresh. cabinet members.

In service to their country the D.R.G. girls provided an evening of entertainment for a group of McChord Field and Fort Lewis soldiers contacted through the Lutheran Service Center.

Amid holiday decorations and cheer at their annual Christmas party, the girls enjoyed a potluck dinner, December 15. Afterwards the president opened gifts which the girls had brought to help furnish the day room.

The D.R.G. and D.P.K. held open house, early in the spring, so that both dorm and day students could become better acquainted.

Climaxing the D.R.G. girls' many activities was their annual week end house party at Lake Killarney May 1 and 2.

Mrs. Charles Barolsky is the adviser for the group.

DELTA PHI KAPPA

The D.P.K. girls got off to an early start this year by giving a "get acquainted" party for their new members in the reception room during the first week of school. Under the leadership of President Ursula McDonald, they have been kept busy on activities ever since.

On October 16 D.P.K. staged a party for about thirty soldiers in the college gymnasium. Servicemen and dormites, alike, had a wonderful time playing games and schottischeing.

To bring the spirit of Christmas to Old Main the D.P.K. gave a decorating party in early December and spent the evening dressing the campus buildings in holiday trimmings.

Two formal banquets also were given, one at Christmas and another at Easter. The Senior Dormites were in charge of the first banquet, and Betty Bates was general chairman of the second. Guest speaker for the Yuletide feast was Miss Anna Marn Nielsen; and Dr. Sidders, of Puyallup, spoke at the Spring formal.

As a fitting climax to their active year, the D.P.K. girls sponsored an all-school roller skating party out at the Roller Bowl on May 7. After a hilarious ride to the Roller Bowl in a Baker U Drive truck, with Emil Lucas at the wheel, everyone, from the humblest beginner to the most graceful roller expert, had a marvelous time.

Aiding President McDonald were: first semester, Nancy Lund, and second semester, Lois Ludwig; secretary, Noreen Stendal; treasurer, Gladys J. Andersen, and fire chief, first semester, Margaret Davidson, and second semester, Corinne Fosso. Representative to the A.W.S. was Betty Bates.



G. I. Anderson, Stendal, McDonald, Ludwig

1st row: Westerdale, Sidders, Bates, Schock, Riza, Hanson, Youngren, Knutsen, Burman. 2nd row: G. I. Anderson, Norman, Davidson, Brodland, Tweeden, Lien, Belew, Butler, Nieman, Swanson, Hatler, Sater, Scherible. 3rd row: P. Peterson, G. Burkestal, Burzloff, Wrigley, Thortleson, Daddow, Linder, Leask, Rolletson, Bell, O'Neill, Lee, Rod, Morrow, Mykland. 4th row: Melin, A. Burkestal, Seaburg, Thomle, Kaaland, Fosso, Nelson, G. I. Anderson, Nestegard, Moe, Gardlin, Erickson, G. Polillo, Hawley, Torvand, Morrison, Gullard, A. Johnson, McDonald, Harstad, Iverson, Reese, Ludwig, Miller, Stendal.





1st row: F. Hornshuh, Stuen, B. Larson, Gullberg, Langton, Larasa, A. Larson, Wright. 2nd row: Iuler, Gregerson, Schmidt, McKinley, Bruun, Kvamme, Nee, Arlson, E. Carlson. 3rd row: E. Hauge, Hagen, Thorpe, Rupert, G. Anderson, Eielson, H. Holl, Storaaft, Shaw, P. Polillo, Bratlie, Neal.

1st row: Larsgaard, T. Carlson, Nichols, Heeselwood, Rupert, Eogling, Bodvig, C. Johnson, Nienstedt, Nyhus, Kuhn, Bockner, Luvaas. 2nd row: G. Linder, MacGregor, Reil, P. Anderson, Friesth, A. Reitz, Kyllö, Kapus, Cvelich, H. Erickson, E. Erickson, Whitehead, Gilje. 3rd row: Nesa, H. Reitz, Holm, Moen, Lucas, Newton, L. Anderson, V. Hopp, Pflueger, Billingsley, Martin, R. Johnson, Gulhaugen.

SIGMA PHI OMEGA

Sigma Phi Omega, the Day Boys organization began its year under the gavel of Pres. Erling Holland. His cabinet included Henry Solos, vice-president; Art Larson, secretary-treasurer; and Harry Holt, sergeant-at-arms. When both the president and the vice-president were called into the service Art Larson took over the presidential reins. The day boys sponsored a booth at the Sage Carnival and were active in athletic events throughout the year.

DELTA BETA UPSILON

The Delta Beta Upsilon (Dona boys) officers are: President, Norman Holt; Vice-President, Paul Pflueger; Secretary-Treasurer, John Bogijen; Sergeant-at-Arms, Hult Reitz. The Ataso forces took over half the boys from the Dona before the end of the year.

Chief activities were: management of a booth at the Sage Carnival and intramural basketball games.



Left to right: Harold, Larsgaard, Hatlen, Davidson, Miss Nielsen, Gulhaugen, Ludwig, Atkinson.
 1st row: Gulhaugen, Holm, Atkinson, Sidders, Pflaum, Person, Tennent. 2nd row: Newton, Pflueger,
 Bates, Dadlow, Ness, Heronwood, Neal.

L. S. A.

The Lutheran Student Association Co-ordinating council, which helps regulate the activities of the religious organizations on the campus, is also the group representing the national L.S.A. It is made up of two representatives from each of these groups: The Lutheran Daughters of the Reformation, Mission Society, Fireside, and Campus Devotions.

The army felt the need of Martin Gulhaugen early in the year, and his presidential duties were taken over by Lois Ludwig, the vice-president. The secretary-treasurer portfolio was ably handled by Betty Hatlen. Miss Nielsen was faculty adviser, and John Larsgaard, student adviser.

GLIDER CLUB

Living up to its purpose of providing wholesome entertainment for its members and other students, the Glider Club this year sponsored the first all-school affair, a novelty skating party at the Roller Bowl Rink.

The annual event of the club, a private P.L.C. skating party at Redondo, was held again this year and proved to be an outstanding social affair of the year.

Officers were: Eldon Kylio, president; Georgiana Atkinson, vice-president; Ruthmarie Tennent, secretary; Paul Pflueger, treasurer.



1st row: Engling, Stuen, Layton 2nd row: Martin, Croft, Pflueger, Nyhus, Hoskins,
 Harshman, 3rd row: Thorpe, Holm, Gullberg, G. Uder, A. Larson, Dahl, H. Hoff.
 1st row: Layton, Perren, A. Johnson, L. Ludwig, F. Hopp, Stendal, Whitehead, Gregerson,
 2nd row: G. Uder, Luter, Longward, Schwanck, Pflumm, G. I. Anderson, Foss, Nelson,
 Neve, Stuen.

NAVY CLUB

Another of the new organizations on the campus is the Navy Club, consisting of members of naval reserves here of PLC. Organized for the purpose of study and social activities, the club has been active and has accomplished much for the future benefit of the members.

Highlight of the club's activities was the formal banquet held on April 31. Lt. Beaman, commander of the 13th Naval District V-12 program was the main speaker, and Dr. and Mrs. Jordan were honored guests.

Sen. Harshman, V-7, served as president; Harry Hoff, V-7, vice-president; Lloyd Nyhus, V-1, secretary; Gerry Uder, V-7, treasurer; Evan Carlson, V-2, sergeant-at-arms.

LINNE SOCIETY

Now over to the care, the Linne-ers this year spent their fall week-end outing at Lake Killamy, and according to all reports a sparkling good time was had by all. Besides this, the group had its annual Christmas party at the little Prairie Mission. When spring finally broke through with warm days the hardy scientists again struck out for the great outdoors on their spring outing.

Track man Sterling Harshman this year took "a hit" as president; Waldo Eleton, vice-president; Guttorm Gregerson, treasurer; Florence Hopp, secretary.

LUTE BOOSTERS

Lute Boosters, Inc. was formed for the purpose of stimulating activities of the college, and the Boosters have had a hand in every major event on the social calendar since their incorporation.

Charter members consisted of those who were connected with the fabulous "Mirth and Mysteries" show. Roy Schmandt was president until called to the army, at which time Hal Bruun moved up from the vice-presidency to take the reins. Roy McKinley was secretary; Harty Hoff, advertising manager.

Common was the expression, "Let the Lute Boosters put it on."

TAWASI

The three-year-old Tawasi Club is an honorary service organization which aids students with their problems, assists in school projects, events, and other activities. At present there are nine members. Membership is attained through nomination by the faculty and student council, and by vote of club members.

Officers are: President, Guttorm Gregerson; Secretary-treasurer, Gus Anderson. Faculty adviser is Mr. Schnackenberg.

Schmandt, Thorpe, H. Hoff, Stuan, H. Reitz, Gregerson, Kuhn, E. Carlson, Newton, Nyhus, Gullberg, Pflueger, Harshman, G. Anderson, Bruun, Holm, McKinley.

1st row: Lurgaard, Gulhaugen, McKinley, Pflueger. **2nd row:** Lute, C. Olsen, G. Anderson, Gregerson, Bruun, Harshman, H. Reitz.



L. D. R.

Once a month the Lutheran Daughters of the Reformation meet with wives of the faculty as hostesses. The purpose of the L.D.R. is to promote and extend Christian fellowship among the women students on the campus.

In addition to their annual service of preparing gifts for the Portland Children's Home in Everett, a Mother's Day tea was held in May at which mothers and wives of the faculty members were honored.

The club officers are: president, Isabel Harstad; vice president, Pat Iverson; secretary, Ruth Knutzen; treasurer, Alice Kaaland. The group was advised by Mrs. Carl Fynboe.

MISSION SOCIETY

With the purpose of creating interest in Lutheran missions among students at Pacific Lutheran College, the Mission Society has enjoyed another active year.

Meetings are held every other Wednesday in the chapel, at which time the group has the privilege of hearing guest speakers as well as students.

A successful Lenten offering was received to help support a student missionary in Madagascar.

The officers the first semester included: president, Don Erickson; vice-president, Charlotte Swanson; secretary, Betty Hatlen. The second semester saw the following in office: president, John Englen; vice-president, Catherine Morrow; secretary, Betty Hatlen. Dr. J. P. Pflueger is the adviser.

CAMPUS DEVOTIONAL

Campus Devotional is an organization which gives all interested students an opportunity to express themselves spiritually, to meditate together upon God's Word, and to help further religious activities on the campus and in the community.

Meetings are held every Wednesday noon in the college chapel with Prof. Arlton as adviser.

Officers are: Nora Kjesbu, president; Margaret Davidson, vice-president; Albert Kuhn, secretary-treasurer; and Georgiana Atkinson and Harry Soloos, L.S.A. representatives. Vacancies were filled by Anne Nelson for Harry Soloos, and Nellie Risc for Albert Kuhn.

FIRESIDE

The Fireside is a group of students who gather every other Sunday evening for a devotional hour in the reception room around the fireplace. At these informal meetings there have been many interesting and educational speakers and discussions.

This organization undertook the task of buying and lighting the candles on the altar and in our chapel throughout the school year.

Officers for the first semester were: Martin Gulhaugen, president; John Larsgaard, vice-president; Eunice Torvend, secretary and treasurer.

Second semester officers were: Charlotte Swanson, president; Hjordis Rogen, vice-president; Eunice Torvend, secretary and treasurer; and Lloyd Nyhus, fire-chief.

1st row: M. Hanson, Mykland, Lee, Ludwig, Morrow, Havland, Herren, Tharleson, Risa, G. J. Anderson, Nestegard, Sidders. **2nd row:** Burzloff, Iurgerson, Thomle, Torvend, Hallen, Sattern, Iverson, Harstad, Reese, G. Birkestol, Davidson. **3rd row:** Knutzen, Holleson, Leask, Miller, Nieman, Nelson, Youngren, N. Liden, Hogen, Swanson, Hagen, A. Birkestol, Kooland, Seaburg, Foma.



1st row: Ludwig, Lee, Morrow, Gulhaugen, G. Birkestol, Risa, Kuhn. **2nd row:** Thomle, Iurgerson, Torvend, Sattern, Hallen, Iverson, Harstad, Reese, Davidson, Nyhus. **3rd row:** R. Johnson, Mykland, Burzloff, A. Birkestol, Larsgaard, C. Olsen, A. Riets, Seaburg, Swanson.



1st row: Torvend, G. J. Anderson, Hallen, Sattern, Atkinson. **2nd row:** King, Hogen, Fosso, Pflaum, Person, Lee, Kjesbu. **3rd row:** Bruun, Nelson, Anderson, Hornshuh, Kuhn, Edghill, Harstad. **4th row:** Larsgaard, R. Johnson, Gulhaugen, P. Peterson, Davidson.



Seated: Hogen, Schock, Sattern. **2nd row:** Iverson, Harstad, Morrow. **Standing:** Larsgaard, Swanson, D. Wright, Baglien, C. Johnson, Thorpe, Stendal.



ATHLETICS





SPORTS

Faced with the realization that the war had taken most of the returning lettermen, Coach Baron Barolsky took over the reins of the flying circus. The loss of Marv Harshman and Marv Tommervik was very keenly felt. With a minimum of material to work with, Barolsky must be given all due credit for the fine job he has done in his first year as head coach.

Assisting Coach Barolsky was Mr. Philip Strombo, who also acted as athletic director and P. E. teacher. Although the season was not as successful as in previous years a spirit of closer comradeship seemed to prevail. Football is played not only for the sake of winning titles and games but also to develop stamina, and this year it was especially needed to train young men in the hardened life of physical combat. In our athletics the will to win was there; however the ability to smile through defeat was not lacking.

Charles "Baron" Barolsky, Coach
P. G. Strombo, Director of Athletics
I. P. Pfueger, Trainer



FOOTBALL

The 1942 P.L.C. football season began with the bad news that half of the returning lettermen had either joined the Navy or had been drafted. Co-captain Hugo Swanson and his buddy Bliss Croft, were both in the Army Air Corps, but Captain George Anderson took over and reigned with a hand of iron during the season. Led by such veterans as Ster Harshman, Tom Lumsden, George Anderson, Erling Holand, and Paul Polillo, the team rounded into shape in a few weeks. Dan D'Andrea, the 250 pound center, held down the center position very capably, and was the only lute besides Captain George to place on the all Winko team.

The sophomores brought a considerable amount of talent back with them from a hard summer's work. In the line there were Ted Juler, Eldon Kyilo, and Vestal Hughes. In the backfield Jack Brattie filled Marv Tommervik's shoes, while Kermit DuBois played quarter and Art Larson took turns replacing both of these boys.

Although the team was pitifully weak in reserves, the Baron hunted up quite a few prospects from the freshmen to fill in the blank spots in the lineup. Attracting special attention were two freshmen guards from Everett, Al Bodvig and Glen Hoiby. The iron man on the team this year was Tommy Lumsden, who, although married and working in the shipyards had time to play a couple of swell ball games for P.L.C.

At the time the Saga went to press only ten players of the 1942 football team remained in school; the others had all joined some branch of the armed forces. Ster Harshman was awarded the Inspirational Award for 1942 thus keeping it in the family for one more year. The captain chosen for the 1943 squad was Paul Polillo, who excelled in sportsmanship and all-around playing ability. Although the team was out-scored in total points, the spirit and fight and will to win was always there. Coach Barofsky firmly believes that next year we will have a team, war or no war. His optimism is heartily shared by all lettermen and also by all alumni.

Yell Leaders: Don Heselwood, Hjardis Rogen, Mildred Hoff, Evan Carlson.

Football Mgr. Waldo Eileson



THE TEAM

Port Angeles, September 28. P.L.C. 6; Commandos 0.

In the first game of the season the Lutes conquered the Commandos in a game which showed lack of practice on both sides. Jack Beattie and Paul Polillo connected for the only score of the day on a 45 yard pass to the corner of the end zone.

Olympia, October 3. P.L.C. 7; St. Martins 19.

Running around the ends and using cut back plays to great advantage, Linway Lewis' squad outplayed an inexperienced Gladiator eleven. St. Martin's scored first, but the Lutes rolled back again, scoring on a pass play that reminded the fans of former teams.

The second half told a story of too much Sinclair as he played his teammates to victory by a decisive margin. The wined line of the Lutes could not hold the hard charging Rangers who rushed Beattie's passes.

Tacoma, October 10. P.L.C. 7; C.W.C.E. 6.

An underdog P.L.C. team held the Wildcat's highly touted Carmody, Berndt, and Kuchera in check, and outplayed them during the entire game. Beattie connected with Ted Iufer for the only Lute touchdown and then toed the extra point between the uprights. The Gladiator line, improving with every game played, outcharged the Wildcat line and stopped their backfield men in their tracks. Mixing up line plays with pass plays the Lutes caught the Cats napping and scooped them in their first conference win of the season. This was the best played game of the season for the Lutes, with Don D'Andrea's an outstanding performance.

Spokane, October 14. P.L.C. 0; E.W.C.E. 32.

The Eastern Washington Savages proved to be as wild as their name when they war-danced across the P.L.C. goal line five times to gain their first victory in four years over a lighter Gladiator squad. Not once did the Lutes cross the Easterners' goal in this free admission game sponsored by the Spokane Athletic Round Table which bought out the Gonzaga stadium.

The Gladiators attempted 30 passes in an effort to even up the score. The hard-charging Savage line blocked two Lute punts to set up two of Eastern's touchdowns. Two pass plays and a pass interception by an E.W.C.E. tackle accounted for the remaining three tallies.





George Anderson
 Al Bodvig
 Erling Holand

Don D'Andrea
 Paul Polillo
 Kermit DuBois

Eldon Kylio
 Ted Iuler
 Tommy Hoskins

Tom Lumden
 Jack Braathe
 Sterling Harshman



Burl Thorpe
 Guyton Groveson
 Dick Ruper
 Glenn Keol

Glenn Holby
 Chas Sholton
 Bob Conwell
 Howard Schajdl

Elmer Erickson
 Vernal Hughes
 Harold Usher
 Harry Erickson

Leslie Whitehead
 Arthur Larson
 Art Bogaason
 Bob Hauge

William H. Hall, Langton, L. Anderson

THE TEAM

Tacoma, October 17. P.L.C. 6; C.P.S. 14.

Smarting from a 47-0 drubbing at the hands of the Lute squad in 1942, the Loggers regained the city inter-collegiate football title in a hard fought game. The deciding factor in the contest was the difference in pass interceptions. Thrills of the day came not from the offensive play, however, but from the defensive play of the Gladiators in the third quarter. Twice they stopped Logger thrusts to the 1 and 11 yard lines.

Alternating pass plays with line smashes, the Loggers moved down the field like wind off Puget Sound, and scored early in the first period. The Lutes tallied a score in the middle of the second quarter on a series of passes from Bratlie to ends, Polilo and Juler. The final C.P.S. score came in the fourth quarter when a Logger made a sheering interception and raced 70 yards to score.

Tacoma, October 21. P.L.C. 7; W.W.C.E. 7.

Dusting off the old "T" formation, the Baron's boys surprised the Western Washington Vikings in a mud-splattered game in the local stadium. Despite the heavy weather the Glads floundered a tricky running and passing attack that had Dr. Loppo throwing it. The running attack of the Lutes bogged down, but passing netted 178 yards. Paul Polilo was playing in the Viking backfield all day and turned in a stellar pass-snagging performance.

Portland, November 7. P.A.C. 11; Porland U.S. 1.

With the Oregon mists rolling in with the breeze the Lutes were outplayed by a better and smarter Pilots squad. In mud that came up to the ankles the Oregonians rolled up the score, but the game was better played than the final score indicates. Scoring on tricky laterals and on long passes the Pilots overpowered the lowly Lutes. Ster Harsman played one of the best games of his football career. The closest P.L.C. got to the golden stripe was the 30 yard line.

Ellensburg, November 14. P.L.C. 6; C.W.C.E. 7.

Losing by the identical score that they had won earlier in the season the lowly Lutes bowed out of the 1942 football season. The Glads outpassed, outpowered, and outplayed the Wildcats, but could not outscore them. Playing their last game under the gold and black colors were Ster Harsman and Captain George Anderson. Using only two substitutes the Baron employed the "T" formation to perfection in smashing off tackle and through the ozone. This game was the hardest fought contest of the year, but Bratlie's educated toe missed one for that vital extra point.

Pacific Lutheran Gladiators defeat the Ellensburg Wildcats 7-6



BASKETBALL

P.L.C.'s "never-say-die" casaba squad, coached by Baron Barolsky, ploughed through tough Winko competition, losing all their tilts to taller and more experienced squads. The Lutes salvaged one game out of seven with non-conference teams when they downed the McChord Field Bombers, 35-31, in the initial game of the 1942-43 season, December 16, on the Parkland floor.

In the first two encounters the Lutes dropped a couple of rough counters to the Western Washington Vikings, 50-37 and 46-30, on Western's staple courts, January 8, 9. The first game saw the Vikings roll up a huge halftime advantage that the Lutes were never able to overcome. Led by Ernie Ludwick, Fred Strankman, and Russ Wittren, the Westerners duplicated the first game as they defeated the Lutes in the second encounter.

The point-blank Eastern Washington Savages were next on the Lutes' program and after their first invasion of the P.L.C. courts in the '43 season, the score read 72-33 and 55-27 for the Winko champs. Paul Potillo led the Gladiator attack in the first game and "Whoo-rancher" Eldon Kybo spruced a determined Lute attack in the second game.

Crashing through for two straight wins from the "oil again, oil again" Lutherans, to the tune of 58-38 and 57-45, January 22 and 23, the C.W.C.E. Wildcats returned to their lair across the mountains. The Lutes displayed improved floor play and gave the Lute rooters a thrill when they forged ahead for a short-lived lead in the second half. Gerry Linder led the Lute scoring with twelve points in the first tilt.

Invading the St. Martins' ballroom, the Lutes again failed to capitalize on their shots as they were shoved further into the cellar position in the conference race by a score of 54-30. In the return tilt, held on the Parkland courts, the "rascals" Rangers trounced Coach Barolsky's "shorties," 61 to 37.

Coach Barolsky's boys took on the two strongest teams in the conference in four out of five nights on a trip east of the mountains and played their best games of the season. They were entertained in real showmanship style by the flashy Central Washington quintet, who drubbed them 74-33 and 61-31 in the first two games of the trip, February 13-14.

Moving to Cheney the Gladiators dropped two hard fought games to the Savages by scores of 59-31 and 48-39. "Potatoes" Potillo was a one man show for the Lutes as he canned 34 points in two nights against the Conference champs. The Lute's zone defense proved effective against the high scoring Easterners.

Winding up the 1942-43 casaba season in a two game series with the W.W.C.E. Vikings, P.L.C.'s basketball was pounded by the "vitamin kids" from Bellingham, 67-40 and 62-48, February 25-27.



Coach Charles Barolsky



Harry Erickson
Sterling Harshman
Gerald Linder

Hartman Hoff
Jack Brathie
Don Hazelwood

Gus Anderson
Elden Kylo
Waldo Eielson

Tommy Hoskins
Paul Polillo
Ray Kopus



1st row: Lider, Hardyman, Hoskins, Brattie, Erickson, R. Hoff. 2nd row: Coach Barclay, G. Anderson, Elseton, Kylo, P. Parlo, Kopus, Heselwood, Mr. Harding

BASKETBALL

In the annual series with the College of Puget Sound for the city championship, the Lutes stubbornly lost three hits to the Logger aggregation. In the first cross-town battle the Loggers whitewashed the Gladiators 71-37.

The Lutes made a bid for the title in the second game of the series but the Lumberjacks out-scored them 55-48 in a fast game at the Parkland gym, January 29. Invading the Logger's camp for the deciding game of the series, the Gladiators again failed to reach the victory tape first and the Loggers rolled over them 43-32.

Outstanding member of the Lutheran quintet for 1943 was Captain Paul Parillo who was chosen forward on the second All-conference team. The Ridgfield sharp-shooter ranked sixth in the conference in average points per game. His total scoring for the season in 14 conference games was 131 points.

Edon Kylo, affectionately known as "Wheatcracker," was one of the three players on the Lute squad over six feet. Kylo was famous for his hard playing. He played both guard and center and scored a total of 125 points in 20 games.

Waldo "Elbows" Elseton, forward and center, was at his best under the basket with his lucky one-handed shots.

Ray Kopus, only senior on the team, was the "steady" of the squad with his even performances and consistent long-shots at the guard spot.

Gerry Lider, shifty little forward, was noted for his one-handed fade-away shots that were almost impossible to guard and for his speed on the maple courts.

Gus Anderson, utility guard and forward who worried the opposition with his long shots and pivot shots, could hit more successive long shots than any other man on the squad—in practice.

Other players who made good showings in competition were freshman Don Heselwood and veterans Marty Hoff, Tommy "Taluspin" Hoskins, Harry "Axel" Erickson and Jack "The Drol" Brattie.

MINDA SPORTS

TENNIS

The demand for manpower of a country at war cut heavily into the ranks of the PLC members, leaving them only one returning letterman. Al Nordeng, the sole veteran, and Kirk Stewart were the only racket wielders chosen to represent the school.

A Winko tennis tournament, to be held in conjunction with the annual Winko track meet is scheduled for May 21 at Ellensburg. Meets with other schools of like name of the writing are, of necessity, tentative.

GOLF

Up to the time of this writing the PLC oval-diggers had kept their record unblemished. The Lutes started the season auspiciously with a 7½ to 4½ victory over St. Martin's on the Rangers' home course, and continued their winning ways by posting a double victory over the College of Puget Sound. The Gladiators whitewashed the Loggers 9 to 0 in a practice match at Bruckdale, and drubbed them in the second engagement, 8 to 1.

Two returning lettermen, Dick Langton and Orv Dahl were on hand at the season's start to greet Coach Baron Barolsky. The team was completed with the addition of Marty Hoff and Ben Thorpe.

The annual Winko League Golf Tournament is scheduled for May 15 on the Lutheran course. The Gladiators have scheduled a re-match with the Loggers of Puget Sound on the Allenmore course Monday, May 17, and a return match is tentatively scheduled with St. Martin's.

GOLF TEAM
Langton, Dahl, Hoff,
Thorpe



TRACK

Five returning lettermen were on hand to greet Coach P. G. Strombo, as he began his first year at the helm of the Lutheran track team. Until the time of this writing, the Lutheran track squad has twice engaged Puget Sound, winning the first meet 64 to 58 and losing the second 62 to 58.

At the season start the main strength was concentrated in the sprints. There was considerable strength in the field events and the problem at hand was to augment the squad in the middle and longer distances. There appeared to be a wealth of talent in new track aspirants, however, and solution appeared in the offing.

Two veterans, up until the time of this writing, had been turning in outstanding performances. Roy McKinley had crossed the bar at distances between 5½ and 6 feet with regularity, and Ster Harshman had traveled the century in 10 seconds flat and the 220 in 23 flat. Other veterans were Ted Iuler, pole vault; Gerry Lider, 220 and 440; and Les Whitehead, 100 and 220.

Newcomers to the track squad were George Anderson, shot put; Grant Mortenson, weights; John Boglien, mile and two mile; Cliff Johnson, mile; Dave Wright, mile; Evan Carlson, mile and half-mile; Ted Carlson, mile; and Harold Bruun, half-mile.



Les Whitehead

Roy McKinley



TRACK TEAM

George Anderson
 Stan Arlton
 John Boglien
 Hal Bruun
 Evan Carlson
 Ted Carlson
 Govey Gregerson
 Earl Gullberg
 Ster Harshman
 Ted Iuler
 Cliff Johnson
 Art Larson
 Bob Larson
 Gerry Lider
 Roy McKinley
 Herb Nienstedt
 Paul Pfluger
 Les Whitehead
 Dave Wright



Star Harshman, winner of football inspirational award.

1st row Knapp, Crouch, McKinley, Bettle, P. Pallas, G. Uder, Snolven, Schmidt, Eljaon, Esping, Aker, Thorpe, Hovell, Crogeron, H. Hall, Neal, H. Erickson, Whitehead. 2nd row: Harshman, Dahl, G. Anderson, A. Larson, Langton, Langton, Swarty, R. Hovgaard, E. Erickson.

LETTERMEN'S CLUB

Because of the Axis "interruption" the Lettermen's Club has not been especially active this year. The duty of this club is to keep the foreign letters and stripes all the campus. Letters to be awarded and minor sports are decided upon by the lettermen.

This year the club relinquished its hold upon the intramural athletics. It was very active, however, in lining up the track which is situated down by the golf course. Two or three weeks of hard labor were expended in completing this task which had been neglected for two years.

The officers for the 1942-43 club were President George Anderson, Vice-president Paul Pallas, Secretary-treasurer Dick Langton, and Sergeant-at-arms Kermit DuBois.

WOMEN'S SPORTS



Mrs. Young



Miss Colyer

Turnouts, meetings, skating parties, hiking, golf, badminton and tennis all have a part in the W.A.A. program which is open to all girls who are interested in sports and are anxious to promote women's athletics at P.L.C. They have as their goal the development of better sportsmanship among the girls as well as a spirit of fun and willingness to work.

This year Miss Colyer was welcomed as the new adviser, and it was with her help and advice that old traditions were carried on and new ideas were put into effect. When it became necessary for Miss Colyer to leave, Mrs. Rhoda Young returned and took over with an experienced hand.

Early in December the girls of the W.A.A. sponsored an all-school ice skating party at the Lakewood Ice Arena which proved to be successful financially as well as socially. The following month a bowling party was scheduled but had to be canceled because of the weather. In February the W.A.A. again sponsored a successful all-school ice skating party.

Because of the war emergency and the resulting food shortage the idea of having the annual formal banquet was abandoned and a cruise was planned instead. The day's program began aboard the Gallant Lady II and after cruising around Puget Sound the group went ashore at one of the state parks where they spent the afternoon hiking, swimming, and playing baseball. After a picnic supper on the beach the awards were presented and the officers for the coming year were installed.

In addition to the eight sports leaders the following girls were on the cabinet: Alice Pfau, president; Carrie Person, vice-president; Rhoda Lee, secretary; Cecelia Gardlin, treasurer; and Margaret Hill, advertising manager.

Alice Pfau



Sarah Pfau, Hill, Gages, Bernhartsen, Dobbins, Stauding, Lee, Bates, F. Erickson, Mrs. Young, Nelson, Gardlin, Ludwig.



VOLLEYBALL

Volleyball tournaments opened the fall sports schedule with Bernice Barnhart keeping track of who was there and when they were there. These tournaments gave each girl a chance to extinguish at least one of the light bulbs in the gym.

FIELDBALL

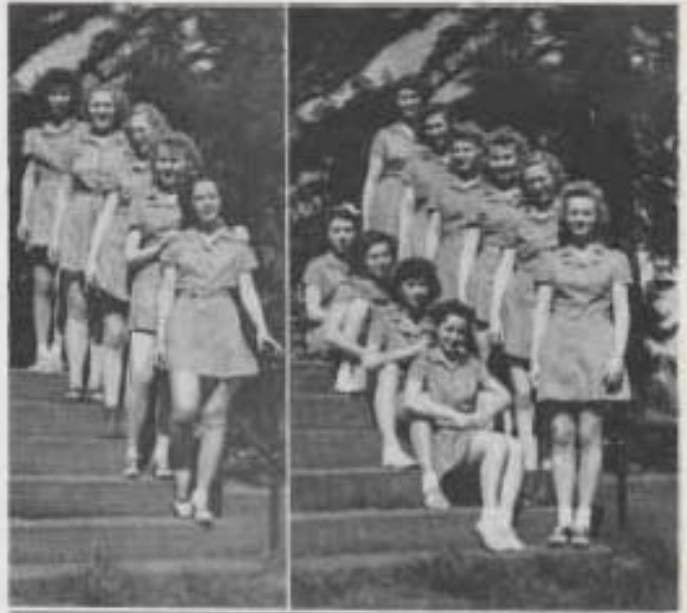
Despite the numerous bruises that resulted from this new game the girls welcomed the chance to try a bit of football technique. Betty Bates spent long hours reading up on the rules and then spent longer hours putting the game across to the rookies.

BASKETBALL

Fera Erickson was kept busy following the fast-moving basketballers this season. As usual this was the most popular sport, resulting in a large turnout and lots of spirited competition for the coveted honor team positions.

BASEBALL

With the arrival of spring the girls appeared on the baseball diamond, each with the inward desire to hit at least one home run for her team. Under the leadership of Lorene Garges the teams were lined up for a round-robin tournament.



Basketball: Paula Johnson, H. Orsted, Youngstrom, Mathen

Field Ball: 1st row: H. Under, Daddow, G. Pullio, M. Hall, 2nd row: Hawley, Person, H. Thoren, Youngstrom, H. Orsted, Lee

Volleyball: 1st row: Geraldine Plouffe, Daddow, 2nd row: Solman, Johnson, H. Orsted, H. Thoren, A. Johnson

MINDA SPORTS



Betty Bates



Marybess Daddow



Lots Ludwig



Anne Nelson

Fare! The familiar sound ringing out on the fairways below the hill very likely comes from one of those ambitious girls who take advantage of the splendid golf course to add that game to their repertoire of sports. With Lonnie Gorges as the competent guide, the divot-diggers go out for the required 50 points toward their yearly marks to be earned by shooting 54 holes of golf. Any time during the year you may find aspiring champions "finishing nine."

Complete confidence and coordination may be seen in future "Alice Merbles" demonstrating their ease and skill on the tennis courts. The accessibility of the courts and the thrill of competition have led many girls to choose this sport as a means of earning an additional 50 points. The required eight sets seem a modest amount, as initiates like Marybess Daddow, top ranking feminine pursuer of the sport, can vouch.

Hiking, a year-round individual sport, annually attracts many outdoor enthusiasts. Under the leadership of Lots Ludwig, the girls have had an opportunity to earn 50 points by going on six hikes. However, under this year's readjusted program only two of these needed to be organized, the other four hikes could be made by any group of at least four, thus enabling a larger percentage of coeds to participate. Hiking affords an opportunity to become acquainted with the surrounding countryside and to develop new companionships.

Comparatively new to Pacific Lutheran sportswomen, badminton has increased in popularity during the two years it has been played. The easy availability of a net and racquets has been responsible for many of our women taking up this sport during their leisure hours. As in tennis eight sets are required for obtaining the 50 points necessary for an award. Anne Nelson, a badminton enthusiast, has been the capable leader.

LETTERBEARERS

The Letterwomen of Pacific Lutheran are those girls who have earned a first year chenille letter, a second year pin, or a third or fourth year chevron to be added to the pin. Selected because of outstanding sportsmanship, ability in various sports, attendance at W.A.A. meetings and turnouts, and womanliness in all things, these girls have worked all year for 550 points entitling them to the annual awards.

Each Tuesday and Thursday throughout the year, girls who availed themselves of the opportunity to bust out for sports might be seen tramping over to the gym to engage in the active competition between teams made up of members from every class in school. This year the high school girls were also allowed to participate and earn the chenille letter "P".

Among the 100 point sports are volleyball, basketball, baseball and the new sport—fieldball. These are the major sports, in which an opportunity is given to make an honor team with an additional 25 points going to the members of the winning team.

Hiking, golf, tennis and badminton make up the individual sports which cost 50 points apiece. Girls who have served on the W.A.A. cabinet were given recognition by granting them an extra 25 points.

When the final day arrives to count up all the yearly earnings, the points are handed in to the council to be recorded for issuing awards. This year a dance was held to celebrate the great day when all accomplishments were fulfilled.

Standing: H. Thoren, Gaddew, Tieber, Gaudin, F. Erickson, A. Bjorklund, Lee, Ludwig, Pinner, Peters, Bernhartsen, Gargax, Hill, Evelyn, Inna, Edina, Brodland.





CAMPUS MEMORIES



REMEMBER WHEN - - - ?

INDEX

Anderson, Betty Jane	29	Davidsen, Margaret	27 31 41 43 47
Anderson, Eugene	30, 47	DeBruin, Jewel	29
Anderson, George	25, 42, 45, 98, 99, 61	DeBak, Ronald	50
Anderson, Gladys I	18, 27, 35, 38, 39, 41, 44, 47	Engling, Thomas	58, 42, 44, 61
Anderson, Gladys L	41	Edgell, Marjorie	27, 40, 47
Anderson, Gustaf	57, 59	Edson, Waldo	26, 42, 57, 57, 58, 61
Anderson, Lloyd	18, 28, 42	Eitel son, Elmer	23, 54, 61
Anderson, Peter	16, 23, 25, 42	Esteban, Pam	27, 41, 42, 62, 65
Arlton, Stanley	30, 42, 60	Etchison, Harry	26, 42, 50, 57, 58, 61
Atkinson, Georgiana	25, 33, 40, 43, 47	Flodstrom, Nelson	20, 22, 40
Bagshaw, Arthur	56	Flores, Corunio	27, 41, 04, 47
Baglian, John	37, 47, 60	Friseth, Richard	42
Bald, Muriel	49	Fryden Cowl	18, 29, 32, 36
Bates, Betty	27, 29, 41, 43, 52, 63, 65	Gardlo, Cecelia	27, 41, 62
Becker, Minnie	25, 49	Garyn, Loren	27, 40, 62
Belle, June	36, 61	Gilje, Stanley	29, 35, 42
Bell, June	29, 61	Gregerson, Guttorm	28, 47, 44, 45, 54, 60
Berman, Edna	29, 41	Gulhaugen, Martin	27, 22, 33, 42, 42, 67
Bernhansen, Bernice	27, 40, 62, 65	Gullord, Helen	61
Billingsley, Charles	28, 42	Gullberg, Earl	6, 26, 27, 28, 42, 44, 45, 60
Birchard, Arvabe Be	27, 39, 41, 47, 65	Hagen, Dora	25, 27, 49
Burketal, Grace	27, 39, 41, 47	Hagen, Norman	28, 36, 42
Bochner, Karl	29, 42	Hanson, Mildred	28, 44, 47
Bodvig, Aline	28, 42, 52, 61	Harshman, Sterling	18, 22, 23, 25, 28, 44, 46, 58, 57, 58, 60, 61
Boynlon, Patricia	29, 36	Harstad, Isabel	20, 33, 33, 41, 43, 47, 33
Braden, Conrad	33	Hartlen, Betty	7, 28, 41, 43, 47, 61
Brallie, Jack	27, 42, 53, 57, 58, 61	Hauge, Janet	28, 36
Brosland, Mildred	27, 39, 41, 65	Hauge, Robert	28, 42, 54, 61
Brown, Harold	18, 22, 25, 34, 35, 42, 45, 47, 60	Howley, Carolyn	28, 41, 63
Burdick, Jeanette	28, 22, 41, 47	Herman, Doris	26, 40, 47
Butler, Marion	39, 41	Heselwood, Donald	28, 42, 43, 51, 67, 58
Carlson, Edward (Ted)	22, 42, 60	Hill, Marvion	27, 35, 40, 62, 65
Carson, Erna	37, 38, 39, 42, 65, 51, 63	Hoe, Matman	7, 26, 31, 39, 25, 41, 45, 57, 58, 59, 61
Carson, Harold	33	Holt, Mildred	28, 21, 51, 63
Christensen, Betty	40	Hobby, Glenn	51
Church, Helen	22, 25, 23, 25, 27	Holstad, Erling	53
Connell, Robert	54	Hoin, Norman	6, 27, 33, 35, 42, 43, 44, 45
Cook, Dorothy	27, 39, 43	Hopp, Florence	22, 25, 32, 33, 34, 40, 44
Cronch, Charles	21, 25, 42, 44, 61	Hopp, Vernon	28, 42
Daddow, Marybelle	26, 38, 41, 43, 62, 53, 45	Hornshuh, Fred	42
Dahl, Orval	44, 50, 61	Hornshuh, Wadella	27, 33, 40, 47
D'Andrea, Dan	59	Hookins, Thomas	28, 44, 59, 57, 56, 62

INDEX

Harland, Ann	25, 22, 42, 47	McLobby, Roy	21, 35, 42, 55, 51
Hughes, Verdel	54	Main, Dorothy	22, 41
Jaker, Theodore	27, 41, 44, 45, 22, 62, 53	Madden, Laura	7, 23, 40
Jensen, Patricia	22, 21, 22, 21, 21, 41, 47, 60	Miller, Margawilla	22, 41, 47
Jones, Marlene	22	Moe, Junita	27, 41
Johansen, Adeline	22, 27, 24, 41, 44, 22	Moore, Maynard	43
Johansen, Arlyn	40	Morrison, Margie	41
Johnson, Clifford	20, 22, 22, 22, 42, 47, 22	Morrow, Catherine	28, 33, 38, 41, 47
Johnson, Lela Mae	47	Myers, Esther	28, 40
Johnson, Rudolph	27, 22, 33, 47	Mykland, Agnes	20, 29, 41, 47
Jurgensen, Doris	22, 22, 22, 47, 20	Neal, Leona	29, 42, 42, 24
Kaaland, Alice	41, 47	Ree, Charles	20, 41
Kopus, Raymond	21, 25, 42, 57, 52, 51	Reisen, Anna	4, 27, 32, 35, 41, 47, 62, 63, 64
Kennedy, Rubida	27	Reis, Gerhard	43
King, Mildred	40, 47	Reisgard, Ruth	22, 41, 47
Kittelsen, Janice	22, 36	Reynolds, Robert	22, 42, 45
Kjelsbo, Nora	40, 47	Richards, Albert	22, 22, 42
Krudson, Othmar	31	Rosen, Dorothy	41, 47
Kuipers, Evelyn	25, 27, 39	Rosenfeldt, Herbert	21, 21, 43, 69
Kuulma, Ruth	22, 22, 22, 41, 47	Rosenberg, Harold (HAI)	22, 22, 27, 22
Kuhn, Albert	27, 33, 42, 42, 47	Norman, Anita	29, 22, 22, 41
Kurzman, Orel	42	Hyman, Lloyd	27, 22, 22, 42, 44, 42, 47
Kylin, Eldon	18, 27, 28, 33, 42, 53, 39, 59	O'Brien, Ruth	22, 41
Langton, Richard	25, 25, 42, 44, 57, 51	O'Brien, Iota	27, 22
Larsen, Robert	28, 42	Olsen, Carl	20, 41
Larsgaard, John	22, 25, 31, 39, 42, 43, 61, 45, 47	Parish, Dorothy	22, 40
Larson, Arthur	6, 11, 27, 32, 29, 42, 44, 54, 60, 61	Parsons, Vivian	22, 22, 48
Larson, Robert	28, 42, 60	Parsons, Corrie	18, 22, 40, 42, 44, 47, 61, 65
Lava, Jack	29	Peterson, Bernice	22, 40
Lamb, Beilla Mae	29, 41, 47	Peterson, Dorothy	22
Lave, Randa	6, 22, 22, 22, 41, 44, 47, 62, 62, 65	Peterson, Hilma	22, 40
Lider, Gerald	22, 22, 22, 41, 44, 54, 57, 54, 61	Peterson, James	22
Lider, Norma	22, 22, 42, 47, 62	Peterson, Mary	27, 22, 42
Linn, Annie	22, 32, 41	Peterson, Peggy	41, 47
Lorenz, Emil	22, 42	Peterson, Alice	22, 24, 48, 42, 44, 47, 62, 65
Lofgren, Lena	12, 22, 22, 22, 43, 44, 47, 62, 62, 60	Pfeiffer, Paul	22, 21, 22, 42, 44, 65, 60
Lundberg, Tom	53	Pick, Ivar	26
Lovvick, Harold	22, 42	Pickin, Gladys	29, 41, 63
MacGeehan, Peter	42	Pickin, Paul	21, 42, 52, 57, 59
Martens, Charlene	22, 40	Reese, Mildred	12, 22, 24, 24, 22, 41, 47
Martin, Dean	27, 42, 44	Reiman, Florence	27, 40
McDermid, Drako	22, 22, 22, 22, 22, 27, 41	Reitz, Armin	27, 33, 43

INDEX

Rief, Herbert	22, 42	Stendal, Norman	14, 23, 25, 36, 41, 44, 47
Ries, Melba	24, 43, 47	Sturatal, Lester	24, 47
Riel, I. Lee	24, 34, 35, 38, 41	Steen, Ando	24, 44
Rogen, Harold	26, 22, 32, 40, 47, 51	Steen, Morris	2, 42, 44, 45
Rullehan, Judio	29, 41, 47	Swanson, Charlotte	27, 28, 31, 61, 47
Rupert, Richard	42, 43, 54	Tennant, Ruthmore	25, 40, 43
Sachs, Oscar	8, 19, 23, 25, 34	Thomas, Erna	28, 33, 41, 47
Salem, Joan	20, 41, 42, 60	Thoren, Emma	27, 33, 40, 51, 65
Scheriedle, Frances	28, 41	Thoren, Helen	27, 40, 62, 63
Schmidt, Howard	27, 44, 51, 64	Thurabon, Lillian	28, 41, 47
Schmidt, Roy	22, 31, 44, 45	Thorp, Burton	18, 22, 29, 34, 35, 38, 39, 42, 44, 45, 47, 52, 57
Schoch, Françoise	22, 41, 47	Torwood, Frank	28, 39, 41, 47
Seaburg, Virginia	27, 41, 44	Tuoden, Otto	41
Severance, Ardo	24, 40	Warren, Vera	21, 40
Severance, Shirley	40	Westworth, Marjorie	23, 32, 32, 40
Shaw, Morris	27, 34, 26, 28, 42	Westworth, Carl	21, 35, 41
Sidders, Virginia	27, 28, 42, 43, 47, 48	Whitford, Ludo	28, 33, 42, 44, 54, 58, 61
Spelman, Charles	28, 34, 61	Wright, David	24, 42, 47, 50
Solomon, Harry	32, 33	Wychby, Betty	24, 25, 41
Solomon, Marion	28, 40	Youngren, Helen	28, 35, 41, 47, 62



SNAPSHOT CONTEST WINNERS

First Prize—"Waldo Duck-hunting" by Jack Beal	Page 67
Second Prize—"Anne Post Fishing" by Lloyd Nyhus	Page 8
Third Prize—"President's Residence Door at White" by John Langvard	Page 11
Runners-up—	
"Mirror, Mirror on the Wall ..." by Catherine Morrow	Page 3
"Sunset" by John Langvard	Page 8
"All Aboard" by Lloyd Nyhus	Page 20
"Apple-pollishing" by Jack Beal	Page 23

FACE THE FUTURE WITH ALMA MATER!

GRADUATES AND STUDENTS:

- As **PACIFIC LUTHERAN COLLEGE** approaches her fiftieth Anniversary, in 1949, she invites you, her sons and daughters, to face the future with her, and to think with her about the fifty years to come.
 - As Mater faces the problems of the near future with intelligence and a courage born of faith in that God who has seen her through the difficulties of the past.
 - Increasingly Alma Mater must lean on you. She must look to you **NOW** for help in spreading her good name, that her halls may be filled with serious students again next fall.
 - She must look to you to take increasing interest in her long-range plans. She therefore invites you to think immediately about her **GOLDEN JUBILEE CAMPAIGN** and to plan to have a part in making the personal sacrifices necessary to carry it out to a final and satisfactory success.
 - And from year to year she must count on you for those annual sacrifices that have made her **DEVELOPMENT ASSOCIATION** of more than ten thousand supporters such a power for good.
-
- As you leave these halls to face a war-torn world the Administration and Faculty wish you a sincere "God Speed." May you face forward with seriousness of purpose. May you resolve to prove worthy of the sacrifices of the past generations — the generations which built and have maintained your Alma Mater.

**The Administration and Faculty of
PACIFIC LUTHERAN COLLEGE**

CONGRATULATIONS TO THE CLASS OF 1943

It has been a pleasure to make the portraits for this annual. Thanks and
lots of Good Luck!

PARENTS and FRIENDS

Patronize Tacoma's leading portrait studio. We specialize in family
groups, child photographs and wedding pictures.

WEDDING PORTRAITS

In garden, chapel, church, home or studio. Candid shots taken at informal
groups at receptions. Call our studio for particulars.

KRUG-LUTZ STUDIO

"Personality Portraits of Particular People at Popular Prices"

762 Broadway

MAin 4493

Opp. Winthrop Hotel

ANDY'S

Bring your prescriptions to this pharmacy with absolute confidence that they will be compounded as quickly as possible with fresh ingredients of Government Standards.

LUNDBERG DRUG CO.
Pacific Avenue at Airport Road

Parkland Barber Shop
C. MARSH

Parkland Washington

Indian Inn

Rhodes World Red Chicken Dinners
and Lunches

Gr. 8155 At Brookdale

Jeter Cabinet & Furniture

"We Specialize in Built-ins"

Gr. #253 Rt. 7, Box 499A

Anderson's Grocery

GRanite 8560

Parkland Washington

DAHL GROCERY

I. G. A.

GRanite 8205

Parkland Washington

72nd Street Cleaner

We Clean Anything
Call and Deliver

72nd & Pacific Ave. GARland 5495

Compliments of
Brookdale Lumber Co.

Avenue Feed Store

965a Pacific Ave. Tacoma, Wash.
Phone GRanite 8641

R. E. Pochel

Your Local Fuel Oil Dealer

GRanite 8857 Rt. 7, Box 497A

Corsages

Specially Designed to Complete Each
Gown at No Additional Cost

GIBSON'S

"The House of Flowers"

Pacific Ave. at 50th St. Tacoma

JOHNSON and ANDERSON

General Merchandise

"The Store That Has It"

On the Mountain Highway at Parkland, Washington

BLUE RUSTIC

ICE CREAM SANDWICHES
LUNCHES

Rosalie Moline, Prop.

B. M. Johnson's Garage

Associated Products

Gr. 8443

Parkland

PARKLAND LIGHT & WATER CO.

Pioneer Among the Mutual Light and Water Companies of the State

29 Years of Successful Operation and Growth

TRUSTEES

Stanley Rosso, President
Walter F. Daniels, Vice President
O. J. Stuen, Treasurer

Iver Johnson, Secretary
Sidney Selden
Geo. P. Knudson, Manager

"BUY WAR BONDS"

Compliments of

PARK THEATRE

3508 McKinley Avenue

Neff's Food Store

"The Best of Everything"

Free Delivery 3517 McKinley Ave.

Stan Sother's Service

Stove and Diesel Oil

Morton & McKinley MAin 9877

Mac's Super Service Station

GENERAL REPAIR

WRECKER SERVICE

GAS & OIL

A. McCutcheon

Garland 9822 40th & McKinley Ave.

Hynes Variety Store

Your Neighborhood Variety Store

3513 McKinley Avenue

Boyle's Pharmacy

Your Neighborhood Druggist

3513 McKinley Ave. MAin 5907

TACOMA SAVINGS AND LOAN ASSOCIATION

START A SAVINGS ACCOUNT FOR FUTURE INDEPENDENCE

Courteous Service

Highest Dividends

So. 9th and "A" Streets

Tacoma, Washington

Famous Sterling • Silverplate
Lenses and Spools • Fine Crystal
Gifts

Gunderson

ORIGINAL JEWELRY

Across from the Winthrop Hotel

SEARS, ROEBUCK AND CO.

Tacoma, Washington

RAYMOND ELECTRIC CO.

Engineers

Contractors

811 Pacific Ave.

Tacoma

When She Says "Yes"
SOS

Sprenger & Jones Jewelers

Watch and Jewelry Repairing a
Specialty

8 Broadway 4375

1147 Broadway

Tacoma, Wash.

AMOCATCOFFEE

In the New
Victory Bag

West Coast Grocery Company

Victor's Market

GROCERIES

MEATS

CONFECTIONS

FILMS

Brookdale

Washington

Compliments of

Spellmon's BUSTER BROWN SHOE STORE

2 Stores to Serve You
Shoes for Every Member of the Family

1122 Broadway 5439 So. Tacoma Way

For SWEATERS of
Good Quality
Come to

QUALITY KNITTING COMPANY

934 Commerce St.

Allstrum Printing Co.

GENERAL PRINTING
SERVICE

MAin 8788

714 Pacific Ave.

It Pays to Buy
DILL HOWELL SPORTING
GOODS

929 Commerce St.

MAin 2640

Tacoma

THE STATIONERS, INC.

COMPLETE OFFICE AND SCHOOL SUPPLIES

926 Pacific Avenue

MAin 2193

925 Commerce St.

Compliments of

Moore's Rialto Theatre

SELDEN'S

LINOLEUM and RUGS
VENETIAN BLINDS

1137 Broadway Tacoma

Modern fixtures to grace a modern home. Let us supply your needs in all electrical equipment.

And to the Graduates
CONGRATULATIONS

GLEASON ELECTRIC CO.
917 Commerce Tacoma

Carlson's Pharmacy

Phone GARland 3-734

3805 South Yakima Avenue
Tacoma, Washington

Archer's Confectionery

3817 So. Yakima

Fuel Oil Service Corp.

for the

Highest Quality Heating Oil

MAin 3171

816 A Street

Headquarters for

QUALITY DIAMONDS
WATCHES & JEWELRY

in Tacoma Since 1889

MIEROW'S

1105 Broadway Opp. Fisher's

"In College You Learn Where To Find It"

"BOOKS TELL HOW!"

When You Want Books and Stationery

C. Fred Christensen STATIONER

913 Pacific Ave. Tacoma

This Year's Newest Campus Styles at

Karl's Shoe Store

1137 Broadway Tacoma

For Graduation Gifts of Diamonds,
Watches and Fine Jewelry, see

BURNETT BROS.

"Tacoma's Leading Jewelers"
924 Broadway

Weaver Pie Bakery

By John Owen

WEAVER RESTAURANT, LODGE
AND BANQUET TRADE

Garland 4707

215-17-19 So. 90th St.

Tacoma, Washington

WASHINGTON HARDWARE CO.

HARDWARE SPECIALISTS

All Sorts of Sports Equipment—Featuring "Spalding"

924 Pacific Avenue

BRoadway 1136

Tacoma, Washington

Poyless Drug Store

TOILETRIES TOBACCOS SUNDRIES

"Save Yourself and
PAY LESS"

930 Broadway

Tacoma, Wash.

Get Your Scrap Books & Photo
Albums at

Harold E. Dahl Co.

"Gifts For Everybody"

1019 Pacific Ave.

Tacoma

Longelow & Ferguson

PRINTERS

Bankers Trust Building

MAin 1066

Tacoma

United Mutual Savings Bank

Tacoma's Only Savings Bank

Washington Building
11th and Pacific

Member of
Federal Deposit Insurance Corporation

G. ANDERSON FUEL & TRANSFER CO.

High Quality

Wood and Coal - Stove and Diesel Oil

"Snappy Speedy Service"

1349 Dock Street

Tacoma

BRoadway 2281

LUTHERAN CHURCH DIRECTORY

TACOMA

1001 South G Street	CENTRAL LUTHERAN CHURCH Rev. P. R. Hob	MAin 4245
South Orchard Street	BETHEL LUTHERAN CHURCH Rev. S. Arthur Larson	GArland 4720
Parkland	TRINITY LUTHERAN CHURCH Rev. N. B. Thunpe	GArland 5163
South Highland Way	HOPE LUTHERAN CHURCH Clarence J. Johnson, Pastor	

SEATTLE

Ninth and Stewart	GETHEMANE LUTHERAN CHURCH Rev. Carl H. Sandgren	MAin 2781
Car. W. 6411 & 32nd N. W.	BETHEL LUTHERAN CHURCH Rev. Carl Sandgren	SUNset 3302
Phinney and North 70th	PHINNEY RIDGE LUTHERAN CHURCH Rev. S. A. Oswald	WAsh 4116
West 67th and 2nd Ave. N. W.	EMERALD LUTHERAN CHURCH Rev. Carl Sandgren	SUNset 3403

BUY WAR BONDS and "KEEP 'EM FLYING"

Former P. L. C. boys now flying for victory include:

"VETERANS"

Dick Bennett	Army
Phil Carmichael	Navy
Bob Clark	Army
John Corliss	Navy
Bill Gammon	Army
Glen Isakson	Army
Arnold Kerler	Army
Dick Oliver	Navy
Roll Press	Chicago & Southern Airlines
Ed Randall	Army
Walt Stinson	Army
John Stuen	Navy
Jackie Wall	C. P. T.
Dick Wenner	United Airlines
Harold Johnson	Army
Orlando Arger	Army

"GAIERS"

Gez Anderson	Army
Harold Carlson	Army
Roy Farrington	Army
Don Frest	Navy
Gerald Hardke	Army
Don Hesselwood	Army
Erling Holand	Army
Vestal Hughes	Army
Wally Larson	Navy
Torgor Lee	Army
Tom Lumsden	Army
Ove Schlanbusch	Navy
Bob Stave	Navy
Haakon Kirkebo	Navy
Don Langert	Army
Hugo Swanson	Army

Courtesy of Lt. Wm. Gammon and Lt. John Stuen

Capitol Theatre

"The Capitol Show is the Place To Go"

4003 So. Yakima

Garland 8262



To the Memory of
MARY and MARY
BUY BONDS

Lundquist-Lilly
Seattle Tacoma



BUY WAR BONDS TODAY — ELECTRIC KITCHENS AFTER THE WAR IS WON!

The home you'll establish when Victory comes will be a more comfortable, more enjoyable home with the added convenience of an **ELECTRIC KITCHEN**. So remember, The bonds you buy now will help you establish that home —and help bring Victory sooner, too.

TACOMA CITY LIGHT

Now Enriched With

8 VITAMINS AND
MINERALS!

Yes! Extra amounts of 8 vitamins and minerals are added to every loaf of Jordan's Bread. Jordan's is over TWICE as rich in these food essentials as most ordinary ENRICHED white bread. Ask your grocer for

JORDAN'S
FRESH-AS-A-DAISY
BREAD

C. O. Lynn Co.
MORTUARY



717 TACOMA AVE. Phone MAIN 7745

BERGH-GRIGGS

Plumbing Heating
Electric Oil Burners

709 Pacific Avenue MAIn 0107
Tacoma, Wash.

Caswell Optical Co.



MAIn 4748

Tacoma, Wash.

C. Magnussen

at
HANSON'S JEWELRY

257 So. 11th Street

Tacoma

DIAMONDS & WATCHES

*Distinctive Designs
At Reasonable Prices*

WAR BONDS

— a Good Investment

When you buy a War Bond you not only help in the winning of the war but you help to establish a post-war future for yourself. You invest in your own welfare, and in your country's security.

PUGET SOUND NATIONAL BANK OF TACOMA

Member Federal Deposit Insurance
Corp.

IT'S HOMOGENIZED
FOR HEALTH—THERE'S
CREAM IN EVERY DROP!

medosweet kreamilk

Rau's CHICKEN DINNER INN

- BUTTER-FRIED CHICKEN
- STEAKS • DINE & DANCE
- PRIVATE BANQUET ROOMS

CALL *Walt* at 9779

TACOMA PARKLAND

RAU'S

PHONE
BIRM
2166

BUCKLEY-KING

TACOMA AVENUE
AT
SOUTH
FIRST

FUNERAL SERVICE

Congratulations
Graduates
of 1943!!

Let's Keep America Free
BUY WAR BONDS



Throughout the world . . . in every camp . . . at naval stations . . . on the fighting fronts . . . wherever you find the boys who are winning this war, you'll find the yearbooks of their respective schools, treasured keepsakes of a happier day.

We are proud of the part we have played in helping these boys perpetuate their school-day memories and our sincere wish is that we may continue to serve their Alma Maters during this historic period and in the brighter days ahead.

We salute our boys on the fighting fronts! We are happy to have played a small part in giving them a little from their more serene days.

WESTERN ENGRAVING AND COLORTYPE CO.

THE SEATTLE ENGRAVING COMPANY
721 Virginia Street, Seattle, Washington

PIONEER, INC.

Printers and Stationers
12th and A Streets, Tacoma, Washington

