

# Pacific Lutheran

S C E N E

F A L L 1 9 9 8



## Builder completes magnificent Gottfried and Mary Fuchs Organ

*Dedication set for November 6-8*

P L U S

The Rev. Rich Hamlin '84 fights for confidentiality of the pastoral office  
Congresswoman Lois Capps '59 carries on the legacy left by her late husband, Walter '57  
Equestrian rehabilitation program gallops to success with help from Wendy Rude '89



# Pacific Lutheran

SCENE

FALL 1998

## CAMPUS

- 3 Wendy Rude '89 rides to success with equestrian rehabilitation program
- 4 PLU sends nursing students to Tobago
- 4 Builder completes pipe organ, dedication set for Nov. 6-8
- 5 Scene debuts technology column
- 5 Hawaii Club begins luau legacy

## FEATURE

- 9 Alaska! Scene celebrates PLU's past, present and future ties to the Frontier State

## LEADERSHIP AND SERVICE

- 12 Does it still matter? It should! A letter from PLU Alumni Association President Brian Olson '83

## ALUMNI

- 13 Lois Capps '59 carries on the legacy started in Congress by her late husband, Walter '57
- 13 Class Notes
- 14 David Anderson '73, '75: From Mayfest dancer to international church consultant
- 16 Chuck Cooper '77 is making a difference with Mercy Ships
- 16 Longtime educator joins governor's wife on tour of China's schools
- 18 Couple sails around the world in 40-foot sloop

## SPORTS

- 23 PLU inducts 1998 Hall of Fame

## ON THE COVER

PLU Photographer Chris Tumbusch knows the value of Photoshop software. Because of the specialized lighting in Lagerquist Concert Hall, he spent nearly four hours on the computer re-working this photo — darkening here, lightening there — to get it just right. Thanks, Chris!

## Letters to the editor

### Early Scene format changed Mooring Mast production for the better

Editor:

First, thanks for your good work. The magazine looks great. I'd like to share a little bit of history on similar changes the Mooring Mast underwent in the early '70s.

In 1971-72 as editor of the Mooring Mast, I initiated two significant changes based upon the good work of Jim Peterson and Scene. The tabloid format of Scene allowed radically reduced printing costs through a printer in Kent. Realizing the amount of money the Mooring Mast could save, we purchased IBM typesetting equipment, which allowed us for the first time to do our own typesetting and paste-up. Before this we dragged copy to the typesetters in Lakewood, then went back two days later for galleys, then made corrections and did dummy paste-ups, then brought the paste-ups back to Lakewood for them to do the final keyline and printing, which was done on an expensive sheet-fed press.

Through these changes we knocked two days off the production schedule, eliminated tons of trips to Lakewood, gained complete control of the layout and began a tradition of racing off to Kent on Thursday nights to put the paper to bed. The Mast was run during a slow press time in the late night hours, and we had it back on campus by 10 am Fridays.

All that happened because Scene gave us a good idea, and it exploded new possibilities for us. I have no idea how the Mast is done currently but I thought you might enjoy knowing how a former editor impacted my life.

Rev. John H. Beck '72  
Portland, Ore.

the  
TRADITION 2000  
ring



from PLU and  
ARTCARVED  
COLLEGE JEWELRY

- ◆ Alumni call the Office of Alumni & Parent Relations, 800-258-6758 (ALUM-PLU).
- ◆ Current students call the PLU Bookstore, 253-535-7665.



#### EDITOR

Linda Elliott

#### ASSISTANT EDITOR

Laurel Willoughby

#### EDITORIAL ASSISTANT

Michelle Miller

#### CONTRIBUTORS

Kim Bradford '94  
Beverly Johnson  
Darren Kerbs '96  
Nathe Lawver '98  
Kathleen (Burk) North '86

#### COPY ASSISTANT

Dean Johnson

#### GRAPHIC DESIGN

Dean Driskell

#### PHOTOGRAPHER

Chris Tumbusch

#### CLASS NOTES EDITOR

Joni Niesz

#### SPORTS EDITOR

Nick Dawson

#### WEB EDITOR

Jason Miller '99

#### IMAGE SCANNER/EDITOR

Eugene Gatlin

#### ADVISORY BOARD

Loren Anderson  
David Aubrey  
Dana Endicott '92  
Lauralee Hagen '75  
Richard Londgren '59  
Laura Majovski  
Jeff Rounce '85  
Cliff Rowe  
Dan Voelpel '83

#### VOLUME XXVIII, NUMBER 1

*Pacific Lutheran Scene* (ISSN 0886-3369) is published quarterly by Pacific Lutheran University, S. 121st and Park Ave., Tacoma, WA 98447-0003. Periodicals postage paid at Tacoma, WA. Address service requested. Postmaster: send changes to Development Data, Nesvig Alumni Center, PLU, Tacoma, WA 98447-0003.

#### Editorial Offices

Administration, Room 207  
Phone: 253-535-7430  
Fax: 253-535-8331  
Email: [scene@plu.edu](mailto:scene@plu.edu)  
PLU Home Page:  
[www.plu.edu](http://www.plu.edu)

#### Office of Alumni and Parent Relations

Phone: 253-535-7415  
Fax: 253-535-8555  
1-800-ALUM-PLU  
Email: [alumni@plu.edu](mailto:alumni@plu.edu)

#### Letters to the Editor

Your letters are welcome and should be addressed to Editor, *Pacific Lutheran Scene*, PLU, Tacoma, WA 98447, faxed to 253-535-8331, or emailed to [scene@plu.edu](mailto:scene@plu.edu). Letters may be edited for clarity and length.

# Using her horse sense

BY LAUREL WILLOUGHBY, ASSISTANT EDITOR

**W**endy (Worthington) Rude's '89 faith can move mountains . . . well, houses at least. Last February, the founder of Northwest EquiCARE Rehabilitation Riding Program saw another element of her successful venture drop into place — literally. Over the space of three days, a 1,700-sq.-ft. donated house was moved onto property near PLU to serve as the organization's student internship and education center. A working facility for volunteers, the center also will feature dormitory rooms for student interns pursuing careers working with the disabled.

Unlike Oz's Wicked Witch of the West, Rude looked forward to the day when "someone would come along and drop a house" on her — it was a long way from Northwest EquiCARE's modest start eight years ago on her family's fifth-generation farm in Eatonville, Wash. In recent years, the fledgling company has taken off.

Traditionally, Northwest EquiCARE had only been able to take summer clients, lately helping about two dozen disabled children and adults each year. But in 1997, the program became year-round and enrollment tripled. Through fall 1998, 60 to 70 clients participated, with another 20 on a waiting list. Nine therapy horses are rotated through the sessions, and some 30 volunteers — including a handful of PLU students — give their time each week in equine support, marketing, educational outreach, riding assistance and related activities.

Sounds like part of a well-crafted plan formed in the head of a service-minded visionary, right? Not exactly. Despite her success, Rude calls herself a follower, not a leader.

"I never set out to create Northwest EquiCARE," she said. "It has a life of its own now, and we just facilitate it. I've been blessed with a healthy body, a farm, the horses, the education — and it's been my job to listen to see where He leads me."

Because she now spends 90 percent of her time in administration, Rude is grateful for the host of volunteers and various community agencies that provide the necessary pieces of her organization's work. Northwest EquiCARE is allied closely with Good Samaritan Hospital in Puyallup, which houses one of the best rehabilitation facilities in this part of the country.



CHRIS TUMBUSCH

**Northwest EquiCARE founder Wendy (Worthington) Rude '89 waits as a donated house is jockeyed into position onto land near PLU to serve as a student internship and education center.**

## NORTHWEST EQUICARE'S ROOTS

Looking back at the path that has taken Rude to the present day is like watching a reverse-run film of a shattering Chihuly glass sculpture: many far-flung bits and pieces magically gravitate to where they belong, finally creating a beautiful whole.

Rude graduated from high school in 1980 and worked her way through PLU, eventually earning a sociology degree with a communication minor in 1989. Throughout this time, she worked on the family farm and put in many volunteer hours with the disabled and disadvantaged in her community.

"Volunteering is something I've always done in one capacity or another," Rude said, "and my degree from PLU just naturally supplemented that." (She would go on to earn a master's from Seattle University in not-for-profit executive leadership, one of the first degrees of its kind awarded by the school.)

One volunteer post had Rude working with at-risk children in the Youth for Christ program at the Remann Hall youth detention center in Tacoma. She frequently took her young charges for visits to the farm.

"I began to notice that the kids really took to the horses," she said.

And if Rude saw sparks between troubled youth and her four-hoofed friends, the energy generated between disabled



CHRIS TUMBUSCH

people and horses proved to be pure magic. Children and adults with behavioral and physical disabilities, who may have had trouble relating to the humans in their lives, were often able to make equine connections instead, she said.

## HORSES AS MIRACLE WORKERS

"The horses are big, warm animals, and they provide a living, breathing, *active* complement to other physical therapy," Rude noted. Horseback riding increases joint mobility, strengthens muscles, stimulates cardiovascular and respiratory function, and improves posture, balance, coordination, self-confidence and self-awareness. But horseback riding therapy comes with a bonus simply not available with passive physical therapy.

"More than any other animal, horses' biomechanics — the way they walk — are the most like humans," Rude noted. "Instead of artificially manipulating joints and muscles, riders get as absolutely close as they can to true walking and mobility. As the horse goes forward, a rider's hips and legs have to move and alternate in the same fashion as if they were actually walking."

She has seen lots of miracles happen, too. Clients who were physically or emotionally unresponsive have learned, over weeks or months of therapy, to sit up, pay attention, interact with people, and sometimes even verbalize for the first time.

"Learning just to sit and ride on the horse today often translates into 'Hi, Mom,' later on," Rude observed. "Whatever a rider may not be able to do now, we just treat them all as if they're going to do it tomorrow. The question we ask ourselves is, 'What do we have to do today to get them there?'"

## ON DOWN THE TRAIL . . .

Another question Rude and her group have been pondering is where Northwest EquiCARE will operate in the coming months and years. The Western Washington Fairgrounds in Puyallup and other local facilities can't serve the growing program much longer.

"We really could use our own piece of land for long-term use, as well as more horses," she said. Rude has faith these needs will be answered, just as all the others have in the past.

"Northwest EquiCARE has always kind of presented its needs," Rude observed, "and we've learned to step out of the way and facilitate the process. To me, doing this work *is* life and service. What are you going to do: keep God only in the church?"



Northwest EquiCARE is a 501(c)3 not-for-profit organization dedicated to providing equine therapeutic riding for disabled clients. Sponsors and volunteers are needed for every facet of the organization's work: scholarships, horse shows, safety equipment, therapy horse care, marketing, educational outreach and more. For information on how you can help, please contact Wendy Rude at the Northwest EquiCARE office, 360-832-6386 or [WRude@aol.com](mailto:WRude@aol.com).



# Learning, living and giving — the Tobago way

BY BEVERLY JOHNSON, ASSOCIATE PROFESSOR OF NURSING



## Trinidad & Tobago

**LOCATION:** Sister islands in the southern Caribbean, roughly 125 miles northeast of Venezuela

**LAND AREA:** 5,130 sq. km, slightly smaller than Delaware

**CLIMATE:** Tropical, with rainy season from June to December

**POPULATION:** 1.13 million

**ETHNIC GROUPS:** Black 43%, East Indian 40%, mixed 14%, white 1%, Chinese 1%, other 1%

**RELIGIONS:** Roman Catholic 32.2%, Hindu 24.3%, Anglican 14.4%, other Protestant 14%, Muslim 6%, none or unknown 9.1%

**LANGUAGES:** English (official), Hindi, French, Spanish

**OCCUPATIONS:** Services 62%; manufacturing, mining and quarrying 14%; construction and utilities 13%; agriculture 11%

Source: E-Conflict™ World Encyclopedia & Simulation at [www.emulateme.com](http://www.emulateme.com)

**EDITOR'S NOTE:** Led by Associate Professor Beverly Johnson, nine baccalaureate nursing students spent March-April 1998 in Tobago, a southern Caribbean island barely 125 miles northeast of Venezuela. The temporary Tobagonians took the same courses as their peers at PLU, although living and learning in a new culture added a dimension to the classes and clinical experiences. The 1998 PLU-Tobago contingent followed on the heels of Professor Marilyn Levinsohn, who took the first group of PLU nurses to Tobago for the entire spring semester of 1997.

**W**hat can I say about Tobago (te-BAY-go)? First, the people there opened their lives to us in so many different ways: they shared their family lives, their work, their play, their food, their music and their affection. We experienced the beauty of their island, too: the sun, the beaches, the quietness of small villages and their bustling city of Scarborough. Tobagonians always asked us, "How is your visit to Tobago?" and told us, "Enjoy your stay on Tobago."

The people were truly our partners in learning. Their health care delivery system is much different than ours at home, and we spent many hours working alongside doctors and nurses in a variety of settings: hospital clinics, community health centers and home health visits. On Tobago, community health nurses know their individual and family clients intimately, emphasize health education and view families as responsible for their own health. The major medical issues on the island are diabetes, hypertension and AIDS.

We constantly reminded ourselves to ask the question, "Why is this different in Tobago than in the United States?" rather than to simply say, "Well, it is just a developing country." Here was an island where pay is low but literacy is high, and nearly 100 percent of children are immunized.

Despite the intensive professional exposure, much of our learning occurred during the time of *just being and conversing* with people as colleagues and new friends. How much we can learn from Tobagonians about taking time to talk and laugh with each other!

On Tobago, many kinds of family constellations exist, and gender relationships, roles and expectations may differ from ours. Women are advancing in the work world and attending universities. (In fact, 70 to 90 percent of the graduates of the University of the West Indies on Trinidad, the sister island, are female.) Men seem to be struggling to find a place for themselves, since the island economy is no longer based on agriculture.



Tobagonian nurses proudly display the fruits of a PLU project to spruce up a breastfeeding room at the local hospital; one PLU student created posters, like the one at left, and the university contributed money to have colorful curtains and pillows made for the room.

The government employs about two-thirds of the workers, and tourism is increasing as a major part of the economy. All this is occurring when the minimum wage is US \$1 per hour, and the maid at our guesthouse is earning about US \$120 per month.

**"How much we can learn from Tobagonians about taking time to talk and laugh with each other!"**

BEVERLY JOHNSON, ASSOCIATE PROFESSOR OF NURSING

So what memories do we take from our time on Tobago? These multicultural, self-described "rainbow people" have few financial resources yet place a high value on their families and their time together. And while the friendly Tobagonians welcomed us as strangers, we left as friends.

Our group from PLU was privileged to have experienced the reality of the daily lives of these people. I believe we are better persons, women and nurses because of our time on Tobago.

## Builder completes magnificent Gottfried and Mary Fuchs Organ

BY LINDA ELLIOTT, EDITOR

**M**ore mouths have fallen quietly agape in the presence of the new Gottfried and Mary Fuchs Organ than at any other physical sight in the university's history.

It's not hard to see why. The magnificent baroque pipe organ literally towers over the northern end of Lagerquist Concert Hall in the Mary Baker Russell Music Center. Protruding from its 20-plus foot-wide alcove placed 10 feet off the ground, the organ's massive pipes and intricate carvings shoot another 35 feet into the air. It is truly a breathtaking sight.

The organ, named for the Gottfried and Mary Fuchs Foundation, is also a feast for the ears. Built by world-renowned organ builder and Parkland native **Paul Fritts**, it rivals the best organs in Europe. As a testament to its excellence, an international organ symposium will be held here in April.

One of the best features of the organ is the hall in which it was built. Fritts himself marvels at the outstanding acoustics and flawless recording space the hall allows.

"I will probably never get another room this ideal for a pipe organ in my entire career," he said.

Installation of the tracker (all-mechanical) organ began in January 1997 and was completed over the summer 1998. The

organ boasts 54 stops (differences in tone that can be mixed or matched), and approximately 80 ranks of pipes — that equals more than 3,800 individually voiced pipes. More than 25,000 hours of work went into the instrument by the builder's crew.

The artist who hand-carved the pipe shades, **Judy Fritts** (the builder's sister), also put in thousands of hours.

Though incredible to look at, it is the organ's sound that captivates the listener's heart and soul.

"How does one find sufficient words to describe the variety, magnitude and quality of sound which Paul Fritts 'voiced' into the pipes of the Fuchs organ?" asked **David Dahl**, professor of music and university organist since 1969.

"If the listeners' ears hear what I hear, then we can speak of kaleidoscopic colors, a dynamic range from a gentle whisper to a brilliant power, all of which is achieved in the organ builder's number one goal — 'maximum blend.'"

David Dahl is the featured performer at the dedicatory concerts, which repeat in their entirety Nov. 6, 7 and 8. Alumni and friends are invited to attend the Friday or Sunday performances. The concerts are free but tickets are required. Call 253-535-7602 for reservations. Call early, we're expecting record crowds!

**DEDICATION CONCERTS**

The 90-minute dedicatory program includes guest artist performances, a dedication ceremony and history about the organ. A reception follows each performance.

**November 6, 8pm**  
\*PLU Community

**November 7, 8pm**  
Donors

**November 8, 3pm**  
\*Public

Admission is free but tickets are required. Call 253-535-7602 for more information.

\*Alumni and friends



# technoweb \tek'-no-web\ n a regular column devoted to PLU, technology and the World Wide Web

BY LAUREL WILLOUGHBY, ASSISTANT EDITOR

**H**ave you seen the smoke rising from the Media Services end of Mortvedt Library? It's more evidence that the Web development team is hard at work, continually upgrading and adding to PLU's home page on the Internet. Following are some of the latest premieres — just start out with [www.plu.edu](http://www.plu.edu) in your URL, and add any of the following addresses:

#### Alumni & Parent Relations

~*alumni* — Alumni & Parent Relations invites alums who are interested in “staying connected,” “keeping in touch” and “getting involved” to do just that. You can learn how to get an alumni card, utilize LuteLink, access the latest *Scene* online, browse the alumni email directory and get involved in volunteering your time and financial resources, among many other activities. (This page was designed by Joel Markquart '94.)

#### PLU Archives and Special Collections

~*archives* — Once accessible only by entering a mysterious room on the third floor of Mortvedt Library, the PLU Archives and Special Collections are now living online! Still under construction, this site features the main university archives, as well as a look at the Scandinavian Immigrant Experience Collection. Information on the Church Archives and Nisqually Plains collections is in the process of being added to the site.

#### Employee Search

[/forms/emp\\_lookup.html](#) — This voluntary directory allows you to search for a PLU employee by last name, first name, department or email address.

#### Music @round PLU

[/pluexper/interest/music](#) — You'll need to have the RealAudio plug-in installed to hear “Music @round PLU,” but any extra effort will be well worth it! With selections available either by group or CD, you're sure to enjoy the University Men's Chorus performing “Sing Noël,” University Organist David Dahl's rendition of “All' Offertorio” or the University Wind Ensemble's “Fantasia in G.” Ten selections are available for your listening pleasure.

#### Web Development Team

~*webmast* — Here's a good page to bookmark. The Web development team uses this site to list all its latest projects, the services it offers and guidelines for adding personal Web pages to the PLU site (this final option available only to current PLU students, faculty and staff). The page also provides an email link to the PLU Webmaster, who is available to address any questions or problems you may encounter on PLU's Web site.

#### And in continuing Technology Initiative news . . .

**Adding buildings and classrooms to the campus network** — The network infrastructure is nearly complete. This past year fiber-optics were extended to most of the buildings on the campus periphery, and in 1998-99 access will be provided for several more groups on East Campus and in Rosso House. And in addition to facilities already online in Rieke Science Center, the proposal will allow network connections in several key classrooms in Hauge, Ramstad, Ingram and Olson.

**Upgrading administrative and academic computing resources** — Computer upgrades will be completed for faculty and staff; the UC Mac users room and Mac education classrooms; an administrative training center in the library; and academic assistance peer tutors. In addition, the installation of several more networked printers will give most faculty and staff access to laser printing.

**Enhancement of multimedia capabilities** — Three computer projection systems will be purchased: one on a cart for mobile use throughout Olson, and one ceiling-mounted model each in Hauge 101 and Math 112. (The system currently in Math will be moved to a Memorial Gym classroom, where it will be more appropriate for smaller classes.) Also slated for purchase is a satellite dish, to allow access to live or recorded materials not available via videotape or commercial broadcasts. These programs could be distributed around campus through the existing campus television cable system.

## Hawaii Club Luau legacy begins

BY KATHLEEN (BURK) NORTH '86

**P**LU history was made on April 24, 1998, when the Hawaii Club hosted its first campus luau. By boldly billing the event as the *First Annual PLU Hawaii Club Luau*, these energetic students made clear their intention of beginning a PLU legacy.

Their achievement was remarkable.

As 230 guests — many in aloha shirts — arrived in the hallway outside Chris Knutzen Hall, the scent of plumeria gave hint of the evening to come. Once inside the hall, guests were fully transported from Parkland to paradise, thanks in large part to the 1,300 pounds of native Hawaiian flowers (donated by PLU parents) flown in from the islands for the event!

Guests had even more reason to feel tropical as they sat for the traditional luau

meal — featuring everything from poi to lomi lomi salmon to Kalua pig — catered by Keoni's Restaurant of Shelton, Wash. And throughout the evening, the masters of ceremony raffled off an abundance of items donated by generous PLU parents and Hawaiian businesses.

Student emcees **Janelle Hanson '00** and **Dustin Nakatsu '00** warmly welcomed the guests and provided excellent explanations of the significance of the traditional food and dance. Hawaiian and Tahitian music and dance were provided by the talented Halau Hula o Ke Liko a'e o Le Lehua of Seattle.

The highlight of the evening was the dancing of PLU's own students, Hula Halau O PLU. Dressed in flowing mu'umu'us, the wahine (women) were mesmerizing in their performance of “Kawaipunahale.” Following a costume change to short dresses, they danced to the love song “Papalina Lahilahi.”

The kane (men) were greeted with loud whoops, which quickly subsided into enthusiastic and respectful applause as they danced to “Kawika.” Later they returned to the stage wearing matching cowboy hats to dance to “Rough Riders.”

The students' nearly flawless dancing was particularly remarkable because they only had two months to practice. For upperclassmen who hadn't danced the hula in several years, this was a challenge. Even more exceptional were the few Hawaii students with no hula experience who learned just for this occasion!

The PLU Hawaii Club can be very proud of its first annual luau. The students shared their culture with tremendous aloha spirit. Every guest left with a bouquet of tropical flowers and great memories. It was a fabulous evening.

See the Winter 1999 issue of *Scene* for information about the next luau.

#### 1998 Planning Committee student members:

Brandon Shimizu '98 (chair)  
Alana Dellatan '99 (entertainment)  
Derek Kuniyoshi '00 (food)  
Lawson Kita '00 (publicity)  
Janelle Hanson '00 (decorations)  
Lisa Dean-Erlander '90, '96  
(PLU Admissions) provided staff support.

#### 1998 Hula Halau O PLU dancers:

Erin Azama '00, Heidi Boehnke '00, David Chew '01, Leilani Fornandoe (relative of PLU staff), Maureen Francisco '99, Anneke Geballe '99, Janlyn Hamada '00, Andrew Hart '98, Devan Inouye '01, Roxanne Kala '01, Derek Kuniyoshi '00, Wanda Louie '99, Melanie Melendrez '01, Alex Miyamoto '01, Mason Moriguchi '01, Kelly Panem '01 and Shaun Takenouchi '01.



Hawaiian cowboys Mason Moriguchi '01, Alex Miyamoto '01 and David Chew '01 dance to “Rough Riders” during the entertainment portion of the PLU Hawaii Club Luau, held on campus last April.



# Doing very well...striving to do even better

BY LOREN J. ANDERSON, PLU PRESIDENT



CHRIS TUMBUSCH

In 1890 the founders of Pacific Lutheran University opened an academy but called it a university—70 years later, in 1960, their vision became reality. They also set out to build a beautiful, five-story schoolhouse, now called Harstad Hall—50 years later, in 1940, it was completed.

The boldness of these founding visions has forever flavored the soul of PLU as a place of growth and striving, an academic community in search of ever greater excellence, a university committed both to understanding and having an impact on human experience as a matter of vocation and calling. Given our roots, PLU has, will and must be an energetic place, a university on a journey—*doing very well*, while always *striving to do even better*.

## Doing very well

Each decade, every university's accreditation is reviewed. In April, the Northwest Association of Schools and Colleges conducted a three-day intensive visit at PLU with an 11-member team of higher education professionals from other colleges and universities across the country. Our preparation for their visit spanned two years and entailed an in-depth self-study by every department and division of the university.

The site visitors logged several hundred hours of interviews and reviewed numerous campus documents in their evaluation of PLU. The news is very good!

PLU earned six commendations:

- ◆ **Clear sense of mission and purpose as expressed in *PLU 2000* and related documents.** "Educating for lives of service" is truly infused into daily campus and classroom operations.
- ◆ **Praise for PLU faculty.** They "live the university's mission" and perform exceptionally innovative and integrative work with limited resources.
- ◆ **Exemplary sense of community and a "passionate dedication to students" across the campus.**
- ◆ **Solid progress in recent years in eliminating short-term deficits and building the endowment.**
- ◆ **Excellent service provided by library and information services staff.**
- ◆ **Thorough approach by PLU to the evaluation process.** Thoughtful self-study, document preparation and gracious hospitality toward site visitors.

The accreditors' positive comments echo the assessment offered by PLU students in last fall's Student Satisfaction Survey, completed by a random sample of 866 undergraduates. PLU's results were compared to those of 117,438 students at 253 other four-year, private institutions.

Our students are more satisfied with PLU compared to their peers at other institutions. And, if they had to do it over, they would again choose PLU as their college. Eighty-nine percent plan to graduate from this university. PLU students gave high ratings on important dimensions that reflect the core of our mission:

- ◆ A quality academic experience for every student
- ◆ A vibrant living and learning community
- ◆ Devotion to students

## Striving to do even better

The accreditation review and the Student Satisfaction Survey provide overwhelming affirmation for PLU's mission, program and people. But PLU is not perfect, and so these assessments also point to areas needing improvement.

The accreditation report urges us to ensure that our methods of measuring institutional effectiveness more clearly reflect the university's distinctive mission and goals. The team also suggested development of faculty evaluation policies that are consistent campuswide. In addition, they recommended allocating sufficient funds for computer software transitions and other implementations of new technology.

The Student Satisfaction Survey highlights several opportunities: continuing our efforts to increase campus safety and security; developing more effective faculty advising methods that address students' changing needs as they progress toward graduation; and expediting the financial aid awarding process to facilitate student planning. These suggestions reinforce our own observations and will help us build our agenda for the near future.

The important point, of course, is that these regular assessments fuel and energize our larger efforts. They encourage us to retain the boldness of vision that marked PLU's founding as we strive...

- ◆ To be recognized nationally as a first-rank New American College that integrates liberal arts and professional education, and prepares students to be lifelong learners.
- ◆ To carry forward faithfully the Lutheran understanding of education, enriching mind, body and spirit, and preparing students for lives of vocation and service.
- ◆ To pursue the highest standards of academic excellence within a diverse and supportive community.
- ◆ To build a better schoolhouse, incorporate advances in technology to improve student learning and strengthen our financial foundations for the future.

The question I am asked most frequently as president is, "How is PLU doing?" My answer: "Very well, thank you. And we are striving to do even better."





CHRIS TUMBUSCH  
An unidentified PLU student gets ready for his turn at Frosty Westering's legendary Ford Fairmont station wagon.

## Rear-view mirror, anyone?

Students, faculty and staff had the opportunity to tear off, break through and beat up a legendary piece of PLU — "The Bomb" — better known as football coach Frosty Westering's car. From seat belts to door locks, many walked away with symbolic parts of the yellow 1977 Ford Fairmont station wagon, which hauled everything from sports equipment to football players. This car, however, wasn't the first of its kind. All of Westering's cars gained legendary status in their day — all of which were also called "The Bomb." This spring Frosty finally traded "The Bomb" (on its last legs and deemed unsafe) in for a minivan. The station wagon was made available for souvenirs in Red Square in May (courtesy of Parkland Chevrolet) at the student-sponsored event "Phat Tuesday: Get Heavy in a Chevy."



## Mortvedt Library celebrates 30th anniversary

CHRIS TUMBUSCH  
Jonathan Hale '67 examines a photo of his father, Frank, (library director, 1952-76) with Sharon Chase, supervisor of library distributive services, at the 30th anniversary celebration of the Robert A. L. Mortvedt Library on March 8. The open house and dedication ceremony commemorated the past, present and future of the library, including a pictorial history, opportunities to sample the latest library technology and view possibilities of the library's future.



## Mary Baker Russell Music Center — the dream fulfilled...

CHRIS TUMBUSCH  
Tom Absher of Absher Construction (right) hands the keys to Gary Severson, chair of the PLU Board of Regents, for the completed Mary Baker Russell Music Center at the center's dedication, held on March 8. The open house event was well attended by Mary Baker Russell's family, including George and Jane Russell. More than 300 music students and faculty members rehearsed in practice rooms, offices and rehearsal halls as guests took tours of the building. In addition, the Choir of the West performed the composition "For Mary," composed by David Robbins, music professor and chair of the music department.

## Anderson Clock Tower remodeled

The 60-foot Anderson Clock Tower has displayed the time to students outside the University Center for more than 25 years. With only 60 percent of its strength left, the damaged and aging structure was just remodeled. Repairs began in May and were to be completed Sept. 1 (watch for a photo in the next issue). More than \$46,000 was donated for the remodeling by Herman '31 and Vivian Anderson, who also funded the original tower in 1970. The new clock tower is made of Alaskan yellow cedar and features new cedar bench-work around a reconditioned concrete base. In addition, there is new lighting to illuminate the clocks.



COURTESY WILLIAM BECVAR  
FROM LEFT: Bill Russell, Janet Hood and William Becvar at "Side Show's" opening-night party at Tavern on the Green in New York City.

## Pierce County AIDS foundation benefits from PLU theatre production

Last May PLU's Department of Communication and Theatre presented a special showing of the play "Elegies for Angels, Punks and Raging Queens" in which proceeds of more than \$2,000 benefited the Pierce

County AIDS Foundation. PLU Professor of Theatre William Becvar directed a cast of 36 in monologues and song. Following the production was a reception featuring Bill Russell, author and lyricist of the play. Russell also wrote the book and lyrics for "Pageant," which ran a year and a half off-Broadway, and "Side Show," which opened to rave reviews on Broadway last October and was nominated for a Tony in the spring.

## PLU's clear sense of mission and purpose are key to reaccreditation

PLU has been reaccredited by the Northwest Association of Schools and Colleges. The evaluation team's report from its April visit praised PLU for several key qualities: its clear sense of mission and purpose as expressed in *PLU 2000* and subsequent planning documents; an exemplary sense of community and a passionate devotion to students across the campus; the exceptionally innovative and integrative work of a faculty that "lives the university's mission;" the excellent service provided by the library and information services staff; and the financial progress of the university in eliminating short-term deficits and building the endowment. The team's recommendations call for further development of PLU's assessment program, improvements in the faculty evaluation process and concern about resources to support technology requirements.

## BRIEFLY

### Awards/Honors

In February, **KPLU 88.5 FM** received the Gavin Award for the Top Jazz Station in the country. It won the award in 1991, 1992 and 1997 as well. The honor is based on many aspects of performance: on-air presentation, respect for personalities, relationship with listeners, fundraising success, research contributions, service to the community and general reputation for being a leader in jazz. Also, KPLU Assistant Program Director and Music Director **Joey Cohn** was voted Jazz Radio Person of the Year. He also won the award in 1993.

KPLU won 12 of 15 awards given, including five first-place honors out of six possible categories at the Washington Associated Press Broadcast Competition in April. The competition covered Seattle metropolitan-area radio stations.

KPLU also earned three honors from the Radio-Television News Directors Association (RTNDA) nine-state Region 1 competition. The AP awards went to **Christine Arrasmith, Gerry Hadden, Steve Krueger, Ingrid Lobet, Dave Meyer, Jennifer Schmidt, Keith Seinfeld** and **Paula Wissel**. The RTNDA awards went to **Gerry Hadden, Steve Krueger, Ingrid Lobet, Jennifer Schmidt** and **Paula Wissel**.

Congratulations to PLU's student newspaper, **The Mooring Mast**, which took home three first-place regional awards and one first place national award from the Society of Professional Journalists.

**Christopher Browning**, history professor, will deliver the Trevelyan Lectures at Cambridge University next spring. He is one of only five Americans to be so

honored in four decades of this most famous lectureship in history.



CHRIS TUMBUSCH

**Lauralee Hagen '75, '78**, director of alumni and parent relations, received the Rising Star Award at the

Council for Advancement and Support of Education District VIII conference in February in Seattle. The award is given to advancement professionals with three to five years experience who demonstrate innovation, professionalism and strong leadership qualities.

**Chris Tumbusch**, associate director of photographic services, won a first-place award in the news and features category at the annual photography competition conducted by the University Photographers' Association

of America. The award-winning photo was of Vancouver, British Columbia, which was the cover shot on the Spring '98 issue of *Scene*. The competition took place during UPA's 37th Annual Technical Symposium in June in Nashville, Tenn.

### Appointments — faculty/staff

**David Aubrey** was appointed vice president of development and university relations in May. He served as interim vice president since January 1998. Joining PLU in 1995, Aubrey served as executive director of major gift development. As vice president, he leads the university's advancement programs in the areas of alumni & parent relations and annual giving, major gift development and advancement services, and communications (which includes university

printing and graphic design, publications, public relations, photography and audio services). Aubrey's responsibilities also include oversight of the management of KPLU 88.5 FM.



CHRIS TUMBUSCH

**Doug Page** was named executive director for major gift development effective in July. Page brings

experience in planned giving from the University of Puget Sound, the Saddleback Memorial Foundation in Laguna Hills, Calif., and California Lutheran University. He is active in the Washington Planned Giving Council, Agnus Dei Lutheran Church and Gig Harbor Kiwanis Club. Page earned a bachelor's degree in business administration from California Lutheran

Appointments continued next page



**Faculty/Staff Appointments** *continued*

University. He replaces David Aubrey who was named vice president for development and university relations.

**Brian Hall** was named development director – major gifts effective in July. No stranger to PLU, Hall worked in the PLU Admissions Office since 1993, first as admissions counselor then as assistant director of admissions. He earned a bachelor's degree in communication from Whitworth College in Spokane, Wash. His current duties in the development office include advancing the major gift development effort of the university by identifying, cultivating and soliciting mid-range major donors.



CHRIS TUMBUSCH

**Joe McCann** (RIGHT), dean of the School of Business, was named University of Florida's first director of executive education, effective in September. In addition to that position, McCann will hold a lecturer position in the Warrington College of Business, where he will eventually teach in the school's executive MBA program. Some of McCann's accomplishments during his six-year tenure at PLU include creating PLU's Family Enterprise Institute, which studies family-owned businesses, and helping form the South Sound Entrepreneurs Network.



CHRIS TUMBUSCH

**Donald Bell** joined PLU as dean of the School of Business, effective June 15. Bell comes to PLU with extensive experience in academic program leadership. Prior to his current appointment, he was vice president of Educational Benchmarking, Inc., a firm that develops and administers assessments to assist universities in improving their operations. From 1988 to 1997 Bell served as assistant dean at the University of Minnesota Carlson School of Management. Eleven years prior to that he directed the MBA program at the University of Washington, and has held administrative positions at the University of Iowa College of Medicine and Group Health Cooperative of Puget Sound. Bell earned a Ph.D. in college personnel administration and higher education from the University of Iowa and a B.A. in speech and theater from William Jewell College in Missouri. Bell's ultimate goal as dean is to see the school recognized nationally for excellence in business education in a New American College setting.

**Myra Baughman '62**, education professor, will serve as interim dean of the School of Education for the 1998-99 year, effective June 1. She replaces John Brickell who, after six years of service to PLU, has chosen to pursue other opportunities. Baughman has

been on the PLU faculty since 1970 and has provided distinctive leadership for the master's program in educational administration. Baughman earned her doctorate at the University of Nebraska, Lincoln, in 1975.



CHRIS TUMBUSCH

**Terry Miller** was named dean of the School of Nursing effective July. Previously Miller was associate dean of the San Jose State University College of Applied Sciences and Arts and director of the SJSU Division of Health Professions. From 1980 Miller taught nursing full-time at SJSU until he began his administrative duties in 1994. He earned a Ph.D. from the University of Texas, a B.S.N. from the University of Oklahoma and holds a B.S. in zoology. He and his wife, Julie, have two young children.



CHRIS TUMBUSCH

**Chris Connerly Benton '81** is the new director of the Academic Assistance Center, effective June 1. She replaces **Wanda Wentworth '79**, who retired in June. Benton graduated from PLU magna cum laude, earning a bachelor's degree in English with a minor in history, and earned certification in secondary teaching. She earned a master's degree in English literature from the University of Washington, and recently served as associate director of the Office of Student Affairs at UW-Tacoma. Benton is an experienced administrator, teacher, tutor, adviser and staff trainer.

**Julia Pomerenk '83** returned to PLU as the new registrar effective April 6. She worked in the office of the registrar at Washington State University since 1989 and was employed by PLU as admissions counselor from 1986-89. Pomerenk earned a degree in English and psychology from PLU and an M.A. in English at Ohio State University.



CHRIS TUMBUSCH

**Chang-li Yiu**, math professor, was appointed dean of the PLU Natural Sciences Division in February, and will serve through 1999. Yiu is an accomplished physicist and mathematician, and has been at PLU since 1973.

Following are new tenure track faculty for 1998-99:

- Donald R. Bell**, Ph.D. (University of Iowa), Dean, School of Business
- Ronald S. Byrnes**, Ph.D. (University of Denver), Assistant Professor of Education
- Kaustuv M. Das**, Ph.D. (California Institute of Technology), Assistant Professor of Mathematics
- Joanna G. Higginson**, Ph.D. (University of Colorado), Assistant Professor of Sociology
- Don T. Immel**, M.M. (Rice University), Assistant Professor of Music
- Chung-Shing Lee**, D.Sc. (The George Washington University), Assistant Professor of Business

**Earl Lovelace**, M.A. (Johns Hopkins University), Associate Professor of English and Distinguished Writer-in-Residence

**Karen E. McConnell**, Ph.D. (Arizona State University), Assistant Professor of Physical Education

**Patricia A. McGee**, Ph.D. (University of Texas), Assistant Professor of Education

**Terry W. Miller**, Ph.D. (University of Texas), Professor of Nursing and Dean, School of Nursing

**Eric D. Nelson '82**, Ph.D. (University of Washington), Assistant Professor of Classics

**Nancy Ann Neudauer**, Ph.D. (University of Wisconsin, Madison), Assistant Professor of Mathematics

**Julia A. Pomerenk '83**, M.A. (Ohio State University), Registrar

**Francesca R. Lane Rasmus**, M.L.I.S. (Dominican University), Assistant Professor, Library

**Stacia M. Rink**, Ph.D. (University of Washington), Assistant Professor of Chemistry

**Jeffery R. Schultz**, Ph.D. (University of California, Los Angeles), Assistant Professor of Chemistry

**Patrick D. Seigler**, M.A. (University of Alabama), Instructor, Library

**Kyle D. Shanton**, Ph.D. (University of Arizona), Assistant Professor of Education

**Merlin C. Simpson '67**, D.B.A. (Golden Gate University), Assistant Professor of Business

**Deborah L. Tannehill**, Ph.D. (University of Idaho), Associate Professor of Physical Education

**Mei Zhu**, Ph.D. (University of Washington), Assistant Professor of Mathematics

**Appointments – students**

**Lisa Birnel '99** and **Bradd Busick '99** have been elected ASPLU president and vice president, respectively, to serve from April 1998-April 1999. Birnel, a political science major, is from Kingston, Wash., and Busick, a political science major, is from Kennewick, Wash. They would like to promote a more active and visible ASPLU.

**Administrators have rare opportunity for sabbaticals**

The PLU President's Council approved an Extended Professional Development Leave for Administrators, which provides for several long-term service administrators each year to take a paid leave away from their typical duties to pursue professional development, education, research, service or related activities. The following administrators were selected for the 1998-99 fiscal year:

**Cristina del Rosario Fridenstine '75**, director of student involvement and leadership, received a two-month paid sabbatical to conduct a study of regional folklore in the Philippines, with a possible focus on female archetypes.

**Ed Larson '57, '61, '80**, executive director of charitable estate planning, received a three-month paid sabbatical to compare the methods of fund raising/resource development, as well as the attitudes toward charitable giving, between Scandinavia and the United States. Larson also received \$2,000 from the Great Northwest Agency of Lutheran Brotherhood toward his sabbatical.

**Published Corner**

**E. Wayne Carp**, associate professor and chair of the history department, published "Family Matters - Secrecy and Disclosure in the History of Adoption" in April by Harvard University Press. Carp's book explores how openness, not secrecy, has been the norm in U.S. adoptions for most of the past three centuries. The trend toward sealed records only arose after World War II, when several unusual cultural, demographic and social trends crossed paths. Carp's work mines a range of resources, including for the first time confidential case records of a 20th century adoption agency: the Seattle-based Children's Home Society of Washington. The book is available at major bookstores and at the PLU Bookstore, 253-535-7665.

# CREDO

The Choir of the West

**RICHARD SPARKS, CONDUCTOR**  
with David Dahl & James Holloway, **Organists**

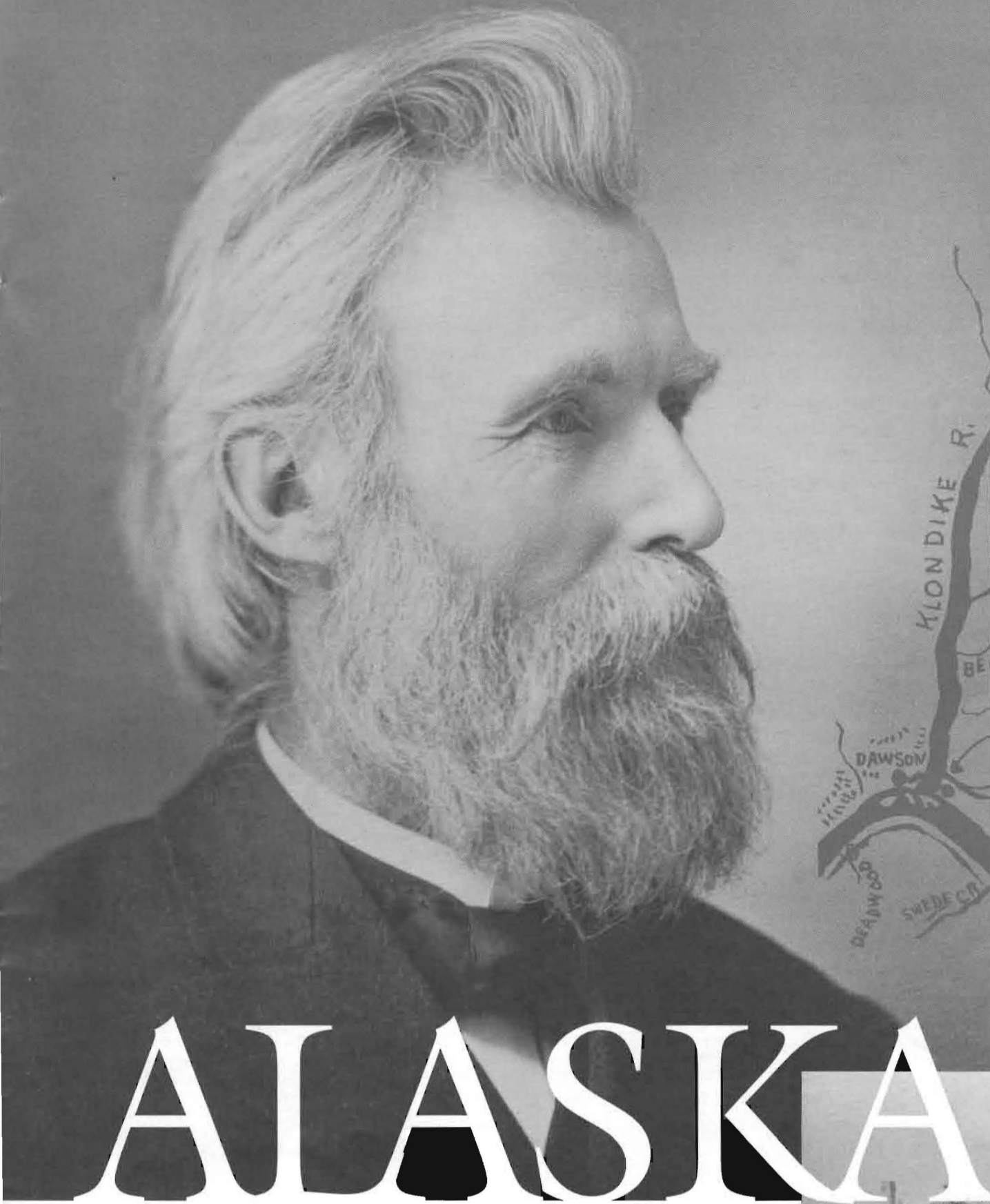
Recorded in the magnificent acoustics of the Lagerquist Concert Hall in the Mary Baker Russell Music Center, this new CD showcases the vibrant sound of the new Gottfried and Mary Fuchs Organ. "Credo" also features the premiere of the title work written by PLU's own Richard Nance.

**ORDER YOUR COPY TODAY!**

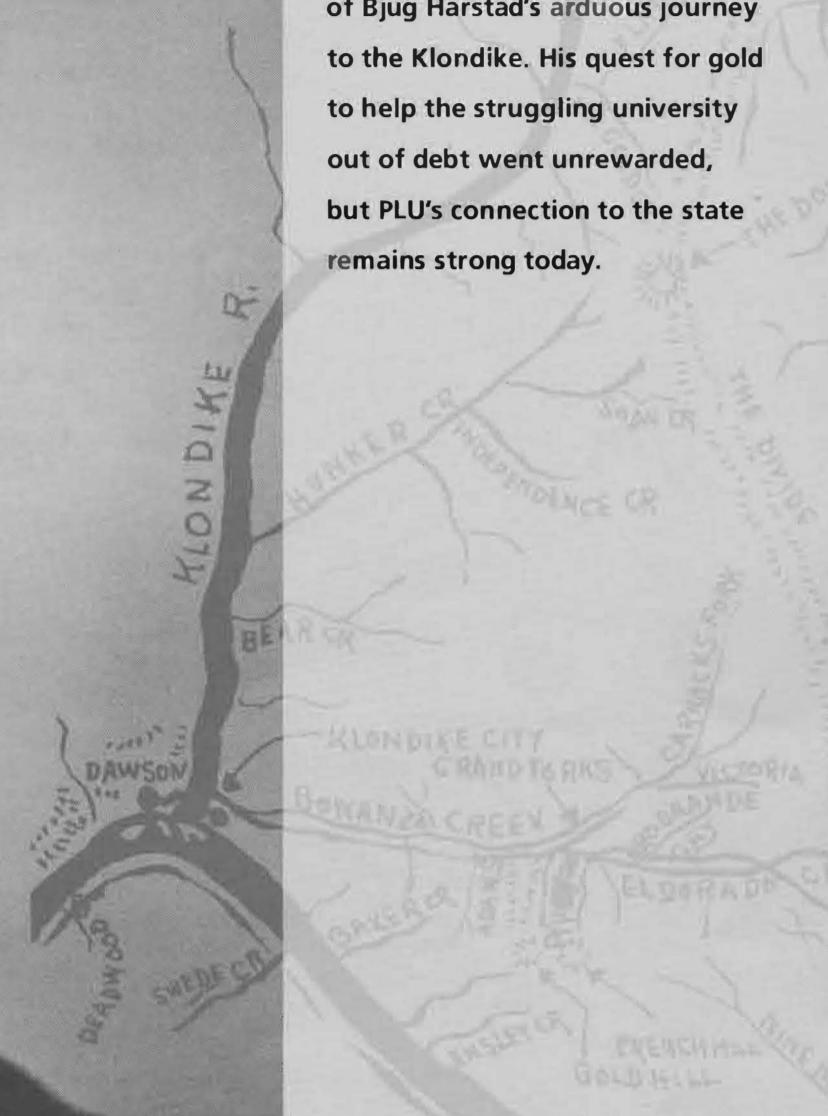
1 ..... \$15 + tax  
2 ..... \$13 + tax  
3 or more .. \$12 + tax  
*Add \$2 for shipping and handling*

**HOW TO ORDER:**  
**Phone:** 800-727-5566 or 253-535-8754  
**Fax:** 253-535-7799 **Email:** [audio@plu.edu](mailto:audio@plu.edu)  
SEE AND HEAR US ON THE WEB: [www.plu.edu/~asvc/](http://www.plu.edu/~asvc/)





**P**acific Lutheran Scene celebrates the 100th anniversary of Bjug Harstad's arduous journey to the Klondike. His quest for gold to help the struggling university out of debt went unrewarded, but PLU's connection to the state remains strong today.



BY NATHE LAWVER '98

Alaska. Its jagged mountains, countless island villages and sometimes impassable roads stretch from Juneau to the farthest corner of the Aleutian islands and into the reaches of the Arctic Circle. For many, it is the last great frontier of the American West.

Since its founding, PLU has played a part in expanding this portion of the frontier and has maintained a presence in the communities and minds of the people of Alaska. *Pacific Lutheran Scene* celebrates 100 years of connections to this vast wilderness with a look back at PLU President Bjug Harstad's quest for gold in the Klondike, and a look at the current ties between PLU and Alaska.

**Yesterday**

The first few years at Pacific Lutheran Academy were rocky as the administration and faculty could find little support for their new learning institution. After nine years, the newly founded PLA was drilled deeply into debt. Its leader, the **Rev. Bjug Harstad**, who served as president from 1894–95 and again from 1897–98, believed strongly in the university and was haunted by its financial situation.

Then prospectors found gold in the Klondike. *continued next page*



Mr. and Mrs. Harstad and daughter in front of the President's residence, circa 1897.



# ALASKA

## Sheep Camp

April 17, 1898

"Many are surprised that the undersigned should go to Alaska among gold seekers. I should like to ask those if they know anyone who has a better reason for going into the gold fields than I.

I suppose we can all agree that there are large fortunes of gold deposited in many places here in Alaska. This is clearly proven. Moreover, we may also agree that gold and silver as well as the earth and its fullness are the Lord's, that He desires that man should benefit thereby and that His gifts should be used in His service for building the Church.

Furthermore, it is firmly impressed both upon me and many others that our school on the Coast is responsible for large sums of borrowed money that must be repaid. We are in duty bound to try every reasonable means of fulfilling our obligations.

Perhaps it is the Lord's will to unlock for us some of the earthly treasures that are deposited here in Alaska."

— excerpt from one of Harstad's first letters home

In January 1898, the Parkland Help Society (PHS) was formed to search for gold in Alaska. If gold was found, half the profits would go to the members and half to the school. **Niles J. Hong** served as president while Harstad was away. The PLA board granted Mrs. Harstad use of the farm and the cows in her husband's absence.

On Feb. 9, 1898 — only three months after his 50th birthday — Harstad and PHS member **Otis Larson** departed from Tacoma for Dyea, Alaska, on board the S.S. *City of Seattle*.

During his year-and-a-half journey, Harstad wrote a series of letters to the Pacific Herald newspaper to inform his constituents of his progress. The boat was "occupied by an indescribable crowd of Irishmen, Norwegians, Germans and Americans," he wrote. Their tight quarters only permitted them to stand while they ate, keeping their hats or caps on. This caused Harstad to muse, "If any get seasick... there will be fun."

Harstad became a spiritual leader on board, leading Lent services. In his letters, he wondered how he could witness to the entire ship of 800 passengers.

The SS *City of Seattle* docked in Skagway, about 100 miles south of Dyea, shortly after noon on Feb. 14, 1898.

"It is not exactly cold today," Harstad wrote, "yet one would like a good fur coat. Most of those who meet at the wharf with transportation wear leather clothes. It is evident that there is a mixed population here. Some wear Eskimo clothes with furred trousers and loose shirt [sic] made of pelts of many colors. A hood is attached to this shirt and is either drawn over the head or hangs between the shoulder blades and looks like a monk's cowl."

Larson, who was not as elaborately clad, contracted a bad cold and was advised by Harstad to remain in Skagway. Larson obliged, and Harstad continued on his way, climbing aboard a large, open, flat-bottomed barge that accommodated 200 men. The barge crept toward Dyea. About 8 pm, it was taken in tow by a little steamer, but after a short while the steamer left.

"We had not landed nor were we aground as far as anyone knew. If anything, it seemed we would drift back again, but that did not happen either. After we had been standing so like trapped, unresisting cattle for some hours, we became frozen and impatient," Harstad wrote.

From Dyea, the party moved slowly north, facing threats of avalanches, bitter cold and deep snow. By April 7, Harstad wrote the university a repentful letter, seeking forgiveness and offering hope that their journey would produce success.

"Both you and I believe in that Lord to whom the world and its abundance belongs. Should He desire to allot to me any of the riches which He has clearly deposited in many places here in the far north, then you ought to know that is to be devoted to the repayment of the debt to you. ... (even) if the Lord will not find a solution for us here, I do not believe He will permit me to die as a swindler."

Spring gave way to summer, and the travelers continued searching. The walking and hiking were treacherous, the days at least 12 hours long. By the time they reached Dawson, many had fallen ill, and food was scarce.

"There has been much sickness and many deaths here in Dawson this summer. The bold and able dentist from La Crosse, Wis., Dr. Lee, was quite seriously ill this summer, but is since well. Weeks ago, he, together with a Jew, an Irishman and an American, went hunting. They went up the Klondike River 80 or 90 miles. After an absence of four weeks they returned well supplied with moose meat. They shot three, a large buck and one calf, and was [sic] so kind as to present the horns to the Lutheran University. It is an exceptionally stately and large pair of horns with a spread of some over five feet and has fourteen points [sic]."

The horns were mounted with a memorial plaque celebrating the journey, and now reside in the PLU Archives on the third floor of Mortvedt Library.

After a year and a half, Harstad returned to PLU empty-handed and full of regret for not finding the answer to the university's financial difficulties.

"Unfortunately, the school has not yet received any financial help from my trip," he wrote. "The reason is that the Lord has not seen fit to give us any gold in Klondike. It is true, the undersigned owns half interest in three claims and is the sole owner of another. From these the Lord can, if He wills, give the school all it needs. So, I hope, no injury has been done. Yet, I am intensely sorry that my undertaking has caused dissatisfaction and concern for many, and for this I ask forgiveness."

Indeed, many pastors and laymen of the district were unhappy with the results of Harstad's trip, grumbling about the expense. They even discussed taking over operation of the school. The proposal was rejected, however, and the district denied any responsibility, legally or fiscally, for the university.

Harstad continued his support of PLU until a merger between three synods in the Northwest and a shift in theological perspective caused him to break his ties with the university.



---

## Today

PLU eventually recovered from its debt to become a thriving university with 3,600 students, a strong faculty and curriculum, and great possibilities for its future. Over the years, PLU has maintained strong ties with Alaska — this year it sent the third largest number of students to PLU, topped only by Washington and Oregon.

According to **Dave Gunovich '82, '95**, an admissions director who has served the Alaska region for the past 15 years, 80 to 90 students from Alaska are attending PLU this fall. Several of those are Regents' and President's scholars, and most are in the top 25 percent of their classes.

Gunovich said the strong tie between the university and Alaska comes from several similarities.

"In Alaska, communities are small and close-knit. It's the same here at PLU. Prospective students are looking for a good education and a very personal experience, and they hear about us from friends or relatives who went here. PLU's reputation as a great place for Alaska students has traveled fast."

---

## Over the years, PLU has maintained strong ties with Alaska — this year it sent the third largest number of students to PLU, topped only by Washington and Oregon.

---

**Erika Thompson '98** was drawn to PLU precisely because of the small community feel, and also the close proximity to Seattle and Tacoma. "(PLU is) a draw on the hearts of Alaskans who haven't experienced it before," she said.

Thompson is the new PLU Admissions Ambassador for the Alaska region. She takes the reins from **Lisa (Backlund '91) VanDoorne**, one of the longest serving alumni ambassadors in the short history of the program. (Admissions ambassadors are alumni who help the admissions office with outreach to prospective students.)

## Tomorrow

PLU's reputation is gaining ground in Alaska. Enrollment climbs every year, and the PLU administration is looking at new and unique ways it can serve the Alaska population. Ideas include hosting more events in Alaska and providing endowed scholarships specifically for students from the state.

Examples of current ties to Alaska:

- ◆ The state's first Connections Event was held in Anchorage on Aug. 16 at Anchorage **Mayor Rick Mystrom's** house. (Mystrom's daughter, **Jennifer '00**, is a student at PLU.)
- ◆ Alaska is part of PLU's corporate territory.
- ◆ The **Rev. Rick Rouse '69**, PLU church relations director, hosts regular meetings and conferences in Alaska.
- ◆ Two PLU Regents, **Martin Pihl** and **Bishop Don Parsons**, are from Alaska.

Along with key states such as Washington, Oregon, Hawaii and Montana, Alaska remains a major focus of PLU's continued growth and sense of mission. Alaska will always retain a special place in our hearts, however, because of the part it played in the university's early history.

"Just as the ties of commerce and geographical proximity have always meant that the Pacific Northwest and Alaska have shared a special relationship, so has PLU enjoyed a historic and strong relationship with Alaska," said **PLU President Loren J. Anderson**. "One hundred years after Bjug Harstad's trip, you see a steadily increasing flow of new students and the return of PLU alumni back to Alaska.

"It is these ties that ensure our relationship for the future."



*Nathe Lawver '98 is living in Lakewood and recently joined the Lieutenant Governor's staff as a communications specialist. He is engaged to Alicia Manley '98, a reporter at the Aberdeen Daily World. Nathe thanks Phil Nordquist for the use of his book "Educating for Service: Pacific Lutheran University, 1890-1990," and Kris Ringdahl for sharing historical items from the PLU Archives.*



## Furry 'roommate' gives Alaska student a chance to talk about values of her home state

BY LINDA ELLIOTT, EDITOR

He's eight feet long from claw to claw, and for an entire semester he lived on Liz Korenek's '00 floor in Stuen Hall.

"He" is a 3-year-old light brown grizzly Korenek shot and killed using a custom-crafted 300 Winchester Magnum rifle in Alaska three days before starting her freshman year at PLU.

Korenek — who doesn't look like a stereotypical hunter at 5'4½" with an engaging smile and a sprinkle of freckles across her nose — said comments from classmates ranged from, "Oh, the poor bear," to "Wow, that's pretty cool."

Korenek's furry roommate intrigued a lot of students. There aren't many who count hunting as a serious hobby. But in Alaska, particularly in rural areas such as Nome, where Korenek grew up, hunting is as commonplace as golf and as essential as going to the grocery store.

"(Hunting provides our family's) main source of food," said Korenek, who began hunting in the sixth grade and is the first in her family to shoot a bear. "I feel good about contributing to the family in that way.

"Hunting also means I get to spend time with my dad and be in the country," she added. "You also learn a lot. You read wind patterns and learn about species and their habits. It's very educational."

The bear rug is now safely back at her parents' home in Anchorage. Korenek enjoyed having it on campus with her if even for a short time. Not only did it remind her of one of her biggest achievements, it allowed her to educate her classmates on the many different aspects of Alaska.

A junior, Korenek is majoring in elementary education and Spanish, and minoring in special education. After graduation, she wants to return to Alaska to teach.



## Alumni Association Profile

**Brian Olson '83**  
Alumni Association President



**OCCUPATION:** Business Development Manager, LaserJet Supplies Operation, Hewlett-Packard Co.

### Why is PLU important to you?

PLU, I believe, is one of few colleges and universities in this country that has a primary focus of educating for lives of thoughtful inquiry and service to community, nation and world. In a world where the responsibility of the educated grows significantly with each passing day, it is critical that PLU continue to send its graduates to the far reaches of the world to continue to make a difference. I'm proud to be associated with such a place.

### 1998 Alumni Board

May 15, 1998

Rebecca Burad '74 (Regent), San Francisco, Calif.  
Phyllis Grahn Carroll '55, Lakewood, Wash.  
David Colton '83, Issaquah, Wash.  
John Feldmann '82, Seattle, Wash.  
Karen Fruehauf '92, Champlin, Minn.  
Michael Fuller '94, Simi Valley, Calif.  
Darren Hamby '87, '92, Seattle, Wash.  
Prentis Johnson '78, Federal Way, Wash.  
Ted Johnson '60 (Regent), Seattle, Wash.  
Beverly Knutzen '55, Shelton, Wash.  
Sandra Krause '89, Eatonville, Wash.  
Helen Kylo '50, Tacoma, Wash.  
Gayle Lindeblom '67, Lacey, Wash.  
Dick Lundgren '59, Tacoma, Wash.  
Nikki Martin '73, Mt. Angel, Ore.  
Jim Morrell '91, Salem, Ore.  
Brian Olson '83, Boise, Idaho  
Susan Stringer '76 (Regent), Bellevue, Wash.

### ADVISORY BOARD

David Aubrey, Vice President, Development and University Relations  
Lauralee Hagen '75, '78, Director, Alumni & Parent Relations  
Monica Hurley '94, Associate Director, Annual Giving/Q Club  
Darren Kerbs '96, Associate Director, Alumni & Parent Relations  
Erv Severtson '55, Vice President and Dean for Student Life

## Does it still matter for you?

BY BRIAN OLSON '83, ALUMNI ASSOCIATION PRESIDENT

Following is an excerpt from Brian Olson's homily given at PLU in April.

**I**t still matters! As you think about those words, what thoughts come to mind for you? Does it still matter for you? Will it still matter in 15 years? In 30 years?

The mission of this university still matters. So why should we care? Why does it matter?

I guess for me I've come to realize more and more over the past 15 years since I left PLU that the world is just not very easy. Life is not a piece of cake or a bowl of cherries. Lost souls are abundant. The range of human hopes and hurts that cry out for the gospel is enormous. They cry out for a gospel of hope, of love and of grace.

Does it really matter that there is an institution of higher education in this country whose mission is to educate for lives of service to others? Who carries the message of the gospel to the

masses of hurting people? Who cares for their hurts? Who strives for justice in this unjust world?

I would argue it is places like PLU and its students, faculty, staff and alumni that demonstrate over the years that we are the ones to take on this role of service to others.

The world needs places like PLU because these places attract people like you. You come here to teach and to learn and then to go out into the world to make a difference.

PLU is a unique place. There are not many like it. And it does matter. The mission of the university is making the world a better place, and it is something of which we can all be proud. The world is in desperate need of people who care enough to make a difference. Don't wait for someone else.

### Q CLUB

The following individuals, churches and businesses have joined the Q Club or upgraded their membership from March 20, 1998, through June 30, 1998.

#### PRESIDENT'S CIRCLE

(\$5,000-9,999/year)

David Aubrey \*

#### AMBASSADOR (\$3,600-4,999/year)

Bernice Koester \*

Don and Barrie Mott \*

#### SENIOR FELLOW (\$2,400-3,599/year)

Roger and Joanne Hildahl \*

#### ASSOCIATE SENIOR FELLOW

(\$1,800-2,399/year)

Dale and Joan Keller \*

Larry and Laura Majovski \*

David and Marvalee Wake \*

Roger Westberg \*

#### FELLOW (\$1,000-1,799/year)

Great NW Agency of Lutheran Brotherhood

David and Joanne Haaland

Jim and Susan Haaland

Vernell and Carol Hance \*

Loren and Camilla Hildebrand \*

Arne and Rhonda Ness \*

Judith Perry \*

Robert and Gladys Rieke \*

Carl and Jewell Searcy \*

Francis and Carol Stack \*

Gerald and Linda Strand \*

#### ASSOCIATE FELLOW (\$480-999/year)

Jay and Charlene Allen \*

Scott Barnum \*

Terry and Kerry Brink \*

Curt Christiansen \*

Mary Evans \*

Glenn Evanson \*

Larry and Judith Evenson \*

Ed and Cristina Fridenstine \*

Daniel and Lynn Girvan \*

R. Gene and Esther Grant \*

Charles Harding \*

Michael and Kristin Houle \*

Luther and Dee Jonson

Steve and Paula Leitz \*

David and Mary Marquardt

Malcolm and Diane McCallum \*

Ben and Ellen McCracken \*

Joan Mitton

Jim and Joni Niesz

Jean Nistad

Tom and Lissa Tommervik \*

Margaret Wickstrom \*

Craig Wright and Ruth Fischer-Wright \*

#### MEMBER (\$300-479/year)

Timothy and Wendy Aho

Joseph Anderson

Richard and Mary Ann Ballew

Cary Bassani

Scott and Kristi Beebe

Richard and Loretta Bentson

Chris Berntsen

Mitch and Jonette Blakney

Troy and Cheryl Brost \*

Kenneth Byrne

Patrice Carlson

R. William and Bette Catlin

Ray and Ann Clack

Dawn Collins

Maria-Alma and Richard Copeland

Andrew and Alison Corrigan

Mr. and Mrs. William Costine

Creator Lutheran Church, Lake Tapps

Janie Davis

Mark and Nancy Davis

DeVoe Mansion

James and Judith Dodds

Graydon and Colleen Downing

Guy and Brenda Ellison

James and Kathy Feek

H. William and Sheri Feeney

Clinton and Carrie Ferguson

Bryan and Dana Gaume

Jacqueline Gilmore

George and Janet Goehren

Jonathan Haley, Jr.

Rolf and Betsy Ann Hanson

Timothy Hanson

Lois Harris

Art and Lorelee Hedlund

Robert and Karin Holland

Emmer Jackson

Milton and Bonnie Jeter

Beatha Johnson

Prentis and Loretta Johnson

Mike and Carol Kammer

Steven Keller

Margo Anne Kessel

Thomas and Cheryl Koonsman

Edwin and Maureen Krantz

Brenda Lichtenwaller \*

Randy Lindblad

Christian Lucky

Thomas and Janette Mahoney

Rick and Vanita Mattson

Ron and Carol Melver

Ed and Nancy Merzenich

Wallace and Eloise Miyasaki

Scott and Jill Moon

Doug and Marit Nierman \*

Norma Norby

Christopher Nordquist

Bruce and Ann Nunes

Dennis and Beverly Ostrout

Catherine Overland \*

Christopher Pankey

Ted and DelRene Perkins

Albert and Ruth Schaffler

Maudie Elaine Schaible

Paul and Kathy Schaller

Matthew and Dianne Solum

Barry and Lisa Spomer

Tina Stuart

Charlotte Thompson

William and Pamela Trotter

Paul and Anne Urie

Vicky Winters

#### ASSOCIATE MEMBER (\$120-239/year)

Nielissa Bertocchini

Shawn and Michelle Blocker

Brandon and Tarren Fix

Katherine Hansen

Michelle Hassler

Ellie Jiang

Erica Kjesbu

Ashley Orr \*

Kevin and Kristine Pieper

Dan and Suzanne Tye

Kevin and Anna Wells

Trevor and Tracey White

#### STUDENT MEMBER (\$60-119/year)

Karin Anderson

Jeffrey Bare

Lisa Birnel

Kristin Merle

Martin and Sarah Mogk

Sarah Nicholson

\* Increased from previous level

### IN SUPPORT OF EXCELLENCE

Gifts, pledges and grants of \$10,000 or more, April 1 to June 30, 1998

DONOR	AMOUNT	PURPOSE/DESIGNATION
Anderson Foundation	\$125,000	William and Jeanie Anderson Endowed Scholarship
Loren J. and MaryAnn Anderson	\$100,200	Will Provision/Q Club Pledge/Restricted Capital Projects Pledge
David G. Aubrey	\$50,000	Will Provision/Q Club Pledge
Jeanne Baird	\$100,000	Will Provision
Virginia Benson	\$25,000	Will Provision
The Boeing Company	\$100,000	School of Business Program Development Grant
Thomas Bundy Estate	\$10,000	Q Club Endowment
Helen and Cecil Dammen	\$12,000	Will Provision
Evangelical Lutheran Church in America	\$59,578	Unrestricted Operating Support/Endowment
Fisher Broadcasting, Inc.	\$15,000	MALD Challenge
Gottfried and Mary Fuchs Foundation	\$100,000	Mary Baker Russell Music Center Fuchs Organ Fund
Independent Colleges of Washington	\$44,968	Unrestricted Operating Support
Gordon and Alice Kayser	\$20,000	Phillip and Alice Kayser Memorial Endowed Scholarship Fund
Edgar and Betty Larson	\$40,000	Will Provision
Anne L. Long	\$10,000	Q Club
Lutheran Brotherhood	\$60,091	Matching 604 Donor Gifts
M. J. Murdock Charitable Trust	\$19,500	Murdock College Research Program for Life Sciences Grant
PLU Women's Club	\$18,400	PLU Women's Club Endowed Scholarship
Bernice Polchow	\$50,000	Will Provision
Everett Thykeson	\$10,000	Anne Kensrud Memorial Endowed Scholarship
Charles and Margaret Upshaw	Confidential	Will Provision/Unrestricted Annual Fund Pledge/Q Club Pledge



# Continuing the dream

After the sudden death of her husband, Congressman Walter Capps '57, California Democrat Lois Capps '59 campaigned for his seat in Congress and now carries on his legacy

BY KIM BRADFORD '94

**L**ois Capps '59 has braved a tumultuous year. The PLU alumna staged three election campaigns, won a congressional seat as a political newcomer and, along the way, emerged as a vanguard for her political party.

At the center of it all was her husband, Walter '57, but he was not there to witness it. Since his sudden death in October 1997, Lois has grieved her loss by working to ensure that her husband's short stay on Capitol Hill isn't left unfinished. In March, Capps, (D-California), became the 36th widow elected to fill a husband's seat in Congress.

"I still think about him every minute," she said. "There's some satisfaction that comes from sitting at the desk where he sat, from carrying out his legacy and building a new base that he didn't have time to build."

Lois and Walter attended PLU in the 1950s, but Walter left a year before Lois enrolled in the school's nursing program. They later met at a Lutheran youth group in Portland, where Lois was completing her nurses training at Emmanuel Hospital, and Walter was attending Portland State University. They married in 1960 and, after a few years in Connecticut where they both earned degrees at Yale University, settled in Santa Barbara, raising three children.

Lois spent a few years at home with the children and then joined the local public school district, where she worked for 20 years as an elementary school nurse, coordinator of the teen parent program and health consultant for child development programs.

Walter taught at the University of California at Santa Barbara, one of the first public schools to offer a religion department. He was a well-liked professor, leading a class on the Vietnam war that brought veterans into the classroom to teach. It became the largest class on campus. The couple occasionally cheered on favorite state legislators and helped them with their

campaigns, but that was the extent of the Capps' political involvement, Lois said.

That changed in 1994 when the local congressional seat came up for grabs because the incumbent was running for the Senate. Walter, who had never before sought elected office, decided to give politics a try. He ran against two other Democrats in the primary and won. He was not so fortunate in the general election, where he lost in what became the Republican sweep of 1994. But his was one of the closest races in the nation, so Walter and his family knew he would hit the campaign trail again.

That's where he was in May 1996 when a drunk driver hit him and Lois as they returned from a campaign event. Walter took the brunt of the impact and was hospitalized in intensive care. He spent three months in a wheelchair with a broken leg and arm. The event catapulted Lois into politics. She quit her job and campaigned for her husband while he recovered.

"There was a lot of pressure on him, but also a huge amount of support," she said. "Events can be solidifying and they can be traumatic. We emerged as a team, and the experience proved him to be a real person for a lot of people." He rejoined her in August of that year and together they weathered a campaign peppered with attacks. In one, Walter was accused of being the only person besides Polly Klaas' killer disappointed that the death penalty was given for her murder.

The Capps' daughter, Laura, had caught the political bug during her father's first campaign and started working at the White House. Her boss, George Stephanopoulos, and the



continued on page 22

## CLASS NOTES

1925

**Henry Kiel** died on May 22. He was born on March 31, 1899. Henry taught biology at Roosevelt High School in Port Angeles from 1929 to 1964. He married Luetta Enda Svinth in 1931 and they had four children, David, Mary Louise, Charles and Karsten. Luetta died in 1958. Henry married Hazel Porter in 1960 and after their retirement they were hired by Crown Zellerbach to teach the children of plant managers in Chile, where they spent two years. He is survived by his daughter, Mary Louise Cowley; step-daughters, Ruth Crapo and Mary Katherine Loyal; stepson, Seldon Porter; five grandchildren and eight great-grandchildren.

1932

**Ruth (Jacobson) Hunnicutt** died on May 25. After her graduation from PLU, she taught school in McCleary and Silverdale before her marriage to Edwin Hunnicutt in 1939. She raised her family and then returned to teach in the Seattle Public Schools, retiring in 1972. Ruth and Edwin were married for 56 years at the time of his death in 1995. She is survived by her daughter, Christine Querna; son, David; and eight grandchildren. Ruth's daughter, Linda Howard, preceded her in death in 1993.

1934



PLU's first May queen, **Kathryn (Kay) Johnson McClary**, died on Feb. 6. Kay taught in Malone, Wash., and Puyallup, Wash., before marrying her husband, Cecil. They were long-time residents of Redmond, Wash., and were temporarily living in Charlotte, N. C., at the time of her death. Kay is survived by her husband, Cecil; her daughter, Dottie McClary McLeod, who attended PLU between 1966 and 1968; a son, Robert; and four grandchildren.

1936

**Enid (Hutson) VanLeuven** died on May 26. She was born in Billings, Mont., and grew up in Washington. She taught for 30 years before retiring 20 years ago. Enid is survived by her husband of 60 years, John; one of her identical twin daughters, Margaret Reyhner; and grandson, Marc Reyhner. Her twin daughter, Maria Love, preceded her in death a year ago.

1938

**Stener Kvinsland** died on March 30. He and his wife, **Margaret '40**, were married in 1941. His career as an educator and coach in the South Kitsap School District in Port Orchard, Wash., spanned four decades beginning during World War II. He coached basketball, track and football, and guided the boy's basketball teams to six league titles, and the track team to a third-place state finish. While he was head football coach, the Wolves captured six championships, and in 1943, 1946 and 1953 the team was undefeated. In the classroom, he taught science, social studies, math, health and physical education. He also served as boys counselor, attendance counselor, athletic director and vice principal, retiring in 1975. He is survived by his wife; sons, Stephen and Eric; daughter, Julie Poier; and eight grandchildren.

**Nevela Lemagie** and her husband, Richard, retired in 1973 and traveled over much of the world. They also had a boat they used to explore the Northwest waters from Puget Sound to Alaska for 18 years. They live in a home near Gig Harbor where they enjoy their garden and family that includes four grandchildren, three of whom serve in the Navy.

1939

**Don and Marie (Johnson '36) Monson** have recently become great-grandparents for the first time with the birth of Logan Daniel Grimm.

1940

**Robert Krueger** died in March. After graduating from PLU, he served in the U.S. Army in the Pacific during WWII. He had a career in restaurant equipment sales and established a manufacturing representative agency, Krueger and Associates. He is survived by his wife of 56 years, **Mildred '45**; two sons, Martin and Mike; daughter, Mary Jane Putt; and their families.

1942

**Delores Randolph** died in December. She taught for many years in the Franklin Pierce School District.

1946

**Jeannette "Kookie" (Burzlaff) Koch** died on April 27. She was a wife, mother, music teacher, minister of music, and entertainer. She was involved in her church and many volunteer community activities. Kookie was an active supporter of PLU, she was a past alumni board member, congregational representative at Trinity Lutheran Church in Gresham, Ore., and the current class representative for 1946. Her oldest

son, **Peter '73**, preceded her in death. She is survived by her husband, **Wilbert '52**, and son, Jeno.

1949

**Wilbert Ericson** traveled to Ireland in May to see the results of St. Patrick's mission. He is looking forward to his 50th class reunion in 1999.

1951

**Louise (Buness) Madsen** and her husband, Richard, have moved to Newberg, Ore., to be near their four children and seven grandchildren. They look forward to participating in activities offered at George Fox University.

1953

**Robert Nistad** died on March 20. He worked at Century Companies of America for 32 years as an agent, manager and regional vice president, winning many awards and achieving the designation of chartered life underwriter, retiring in 1988. Robert's extensive community involvement included being a PLU Q Club member. He was named PLU Alumnus of the Year in 1970. Robert is survived by his wife, Jean; daughters, Marjie and Kathie; a son-in-law, Wayne; and two grandsons.



**Sig Sorenson** died on March 21 in Port Angeles, Wash., of melanoma cancer. After graduating from PLU with a bachelor of science degree, he attended the University of Washington Dental School, where he received his doctor of dental surgery degree in 1956. Sig practiced dentistry in Port Angeles for 34 years, after serving as a dental officer in the U.S. Navy. He retired in 1992 and went on staff at the University of Washington Dental School in the Department of Restorative Dentistry, where he was asked to be an affiliate assistant professor. Sig and his wife, **Laura (Sperstad '51)**, lived in Port Angeles for most of their 43-year marriage. He is survived by his wife and their two daughters, Laurie Sorenson and Karen Ward. His brother, **Robert Sorenson '58**, preceded him in death on March 10.

1954

**Hermina Meyer** retired after 44 years as a medical technologist. After receiving her degree as a medical technologist from PLU, she was a missionary with the Evangelical Lutheran Church and in 1958 went to India where she stayed for 20 years. In India, she worked in hospitals and traveled extensively as a member of the Christian Medical Examining

Board, helping train students as medical technologists. For the past two decades, she has worked at Pathologist's Regional Laboratory in Lewiston, Idaho.

1957

**Richard Nieman** died on March 20. After graduating from PLU, he attended Wartburg Theological Seminary in Dubuque, Iowa, and earned a master of divinity degree in 1961. In 1989 he earned his doctorate of ministry degree from Northwest Theological Union in Seattle. Richard was a pastor from 1961 until his retirement in 1996. He is survived by his wife, **Stella (Anderson '57)**; daughters, Diane and Phyllis; son, Mark; three grandchildren; a brother, **Robert V. Nieman '50**; and a sister, **Dorothy J. Anderson '46**.

**Jon Soine** is a full-time real estate associate broker at Windermere Realty in Bellingham, Wash. He and his wife, June, have five children and 10 grandchildren. They take as much time as possible for fishing trips to Ross Lake and Chelan, Wash., and Canada, and are planning a trip to Alaska this year.

**Barbara (Skjonsby) Fosso** died on March 27. Barbara and her husband, **Don '57**, were married in 1957 and moved to Oak Harbor, Wash., where

she taught elementary school. She also taught piano and was the church organist at Oak Harbor Lutheran Church, where she was a member. Barbara belonged to the local, state and national music teachers associations, was an avid swimmer and received great joy from training and caring for her dogs. She is survived by her husband, Don; three sons and daughters-in-law, Richard Fosso, Steve and Kori Fosso, Dan and Tracey Fosso; and two grandchildren.

**Walton "Wally" Berton** retired after 37 years in parish ministry in Oregon, Washington and California. His last Sunday at Good Shepherd Lutheran Church in San Pedro, Calif., was June 28. He and his wife, Carole Booth, are living in Long Beach, Calif., where Wally will do some substitute teaching and occasional interim ministries. They hope to have more time to visit their eight children and six grand-children as well as travel more.

1958

**Robert Sorenson** died on March 10. He received a bachelor of science degree in chemistry from PLU, an MBA from the University of Washington in 1972, and a master's degree in applied behavioral science from Whitworth College in 1981.

1960

**Hildred (Hansen) Dungan** earned a bachelor of science degree in business administration from Muhlenberg College in Allentown, Pa., in May.

**Gerald Erickson** died on May 23. After graduating from PLU, he attended Luther Seminary where he received a bachelor's degree and master's degree, and Aquinas Institute of Theology where he received a doctorate. Gerald served congregations in Minnesota and Texas and was the founding pastor of Light of the Cross Lutheran Church in Bothell. Survivors include his wife, Susan; daughters, Anne Green and Janet Adams; and one grandson.

**Bob Erickson** received the Ron Sperline Service Award for his work with the girls softball and basketball programs at Ocosta High School in Westport, Wash. He and his wife, **Merri (Nelson '62)**, are cranberry growers in Grayland, Wash. Merri is president of the Washington Cranberry Alliance and serves on the Southwestern Washington Synod Council and Region One Governing Council. Their daughter, **Jeanine '90, '92** is an assistant audit manager with the Washington State Auditor's Office, and is pursuing a master of public affairs degree at the University of Washington. Their daughter, Sharon, is studying nutrition at Seattle Pacific University.

1961

**David Haaland** is a senior associate consulting surgeon in the orthopedic department and oversees the Impairment Evaluation Center at the Mayo Clinic in Rochester, Minn. He is also an orthopedics instructor at the Mayo Medical School. He and his wife, Joanne, have enjoyed the transition from California, though the recent mild Minnesota winters have made it easier.

1962

**Jean Lidin** visited relatives in Norway in September 1997. While there, she took the train to Tonsberg to visit one of her PLU classmates, retired teacher, **Grethe Rom '62**. A Viking ship on display in Oslo was discovered on the Rom family farm.

**Sandra (Tynes) Hagevik** went with her two sons, Randi and Erik, to Norway in the summer of 1997. They visited with more than 100 relatives during their stay. Sandra is a career counselor to Housing and Urban Development employees throughout the West.

## ALUMNI PROFILE

## From Mayfest dancer to international church consultant: The long and satisfying road

BY REV. DAVID ANDERSON '73, '75

**F**actors that led to my work with the Church of Norway and the Church of Sweden began rather inconspicuously during the spring of 1971. I was finishing my first year as a Mayfest dancer and had learned that our advisor, Auden Toven, had a particular problem on his hands.

It seemed a disproportionate number of PLU coeds were taking the Norwegian language class from this "very eligible" bachelor. Upon hearing of Toven's plight, I offered to help him balance the odds and take his Norwegian class in the fall. So began my contact with the Norwegian language and culture that would shape my interests and activities for decades to come.

I eventually attended Menighetsfakultetet, a Lutheran seminary in Oslo, Norway, and since then have maintained contact with pastors and other friends closely associated with the Church of Norway. Four times since 1992 I have been invited to work with the Lutheran church in Norway relating to issues of faith, families and congregations.

The last trip was by far the most significant.

In May, Dick Hardel, executive director of the Youth and Family Institute of Augsburg College, and I (as the institute's program director) gave the keynote address at a church conference in Granavolden, Norway. Titled "Family and Congregation Hand in Hand: A Strategic Conference on the Family," the conference reflected the current emphasis in Norway to work more closely with families to nurture faith life in the home.

The primary goal of the gathering of nearly 30 leaders was to establish a long-term relationship with the Youth and Family Institute of Augsburg College in order to help the Church of Norway further develop their ministry with families.

According to Augsburg President **Bill Frame**, former vice president for finance and operations at PLU, "The work of the institute brings the college into direct service to the church, building a powerful prop under our curricular pursuit of the dialogue of faith and reason."

The movement of partnering home and congregation has been growing in the United States since it was first piloted by the Youth and Family Institute in 1996. People are looking for a faith that makes a difference in their lives, and their home life is of central concern. Congregations are helping individuals and entire households link their faith lives with their daily lives, and it is this cooperation that is gaining the attention of Lutheran churches throughout the world.

My trip to Norway also opened doors to meaningful contacts in Sweden, where I gave three lectures to seminary students at the pastoral institute. My itinerary also included discussions with leadership from the Lund diocese and staff from two congregations.

It is amazing how a decision initially motivated by one passion in the spring of 1971 would lead to the development of a whole set of other passions in subsequent years. I am deeply indebted to a multitude of experiences at PLU that eventually led me to Norway, Sweden and a host of people deeply committed to a strong Lutheran and Christian witness around the world.

**David '73, '75** and **Gloria Anderson '75** have a daughter, **Kirsten**, who is a sophomore at PLU.



Part of David Anderson's '73, '75 (far right) trip to Scandinavia included a stop in Sweden and discussions with the Lund diocese.



## Chuck Cooper '77 is making a difference with Mercy Ships



Chris Tumbusch  
Chuck Cooper '77 stands aboard Mercy Ships' Caribbean Mercy, when it was docked in Seattle this spring.

**W**ith two out of every five people on the earth malnourished and more than one billion living in absolute poverty, Mercy Ships, a nonprofit Christian relief agency, has sailed to more than 70 ports around the world providing medical care, relief aid and long-term sustainable change since 1978.

In 1991, Chuck Cooper '77 and his wife, Rebecca, lived on board Mercy Ships flagship *Anastasis* for a three-month-long Discipleship Training School.

"Life on board the nine-story vessel with 400 missionaries from 30 nations was challenging and rewarding," Cooper said. "During our schooling we lived in Poland, the Netherlands, Norway, the Ukraine and the Soviet Union. We left the ship in Estonia just three days before the coup closed Tallin's Harbor. For several days, Soviet battleships prevented the *Anastasis*' departure." Two additional months of Christian outreach followed the school phase.

After completing the training, the Coopers knew it was their calling to serve the poor and needy through the work of Mercy Ships. In 1993 they sold their house in Colorado and moved to Texas to volunteer full-time at Mercy Ships' international office. Chuck's work in the video production department has taken him to Mexico, the Dominican Republic, Guatemala and Nicaragua.

"My greatest challenge as a videographer is catching God at work on board the ships and within the remote villages that we serve," Cooper said.

Last year alone Mercy Ships' three-fleet operation, which is staffed by international crews of nonsalaried professionals, brought free medical care and relief to Lithuania, Nicaragua, Guatemala, South Africa, Vanuatu and Papua New Guinea. Over the past 20 years, volunteer surgeons have performed thousands of free operations, from correcting cleft palates and crossed eyes to removing tumors and cataracts. In addition, more than 100,000 people have been treated in village medical and dental clinics.

A native of Salem, Ore., Cooper earned a BBA in business administration from PLU and earned an MBA from the University of Puget Sound. Chuck and Rebecca have two children, Dustin, 5, and Jason, 3. They are expecting their third child in September.

Ralph Carr will complete his 25th year as a pastor at Westminster Presbyterian Church in Chehalis, Wash., on Aug. 31. He and his wife, Joyce (Taylor '62) were in Malawi, Africa, for three weeks this past summer. They were part of a 12-member team doing mission work.



**Dan Erlander** received an honorary doctorate from Trinity Lutheran Seminary in Columbus, Ohio, during the commencement ceremonies on June 6. He served congregations in St. Charles, Ill.; Spring Valley, Calif.; Albuquerque, N.M.; and was campus pastor at PLU before taking his current position as pastor of Trinity Lutheran Church in Freeland, Wash. He is the author of "Baptized, We Live: Lutheranism as a Way of Life," "Manna and Mercy: a Brief History of God's Unfolding Promise to Mend the Entire Universe," and "Let the Children Come: A Baptismal Manual."

1963  
**Ruth Schaffler** completed her post-master's degree work in the family nurse practitioner course at PLU in September 1997 and is working as a part-time advanced registered nurse practitioner while she teaches full time in the School of Nursing at PLU.

1964  
**George Beard** has a new position as court services officer for the child in need of care section in the juvenile department of the 29th Judicial District in Wyandotte County, Kansas.

**Mary (Olson) Cornils** and Gregory Baich were married on Aug. 15. Mary is the director of community health at Fairview Hospital and Healthcare Services in Minneapolis.

1966  
**Deanna (Zimbelman) McDermott** earned a master of science degree in nursing in June 1997 from Gonzaga University in Spokane, Wash., and was nationally certified as a family nurse practitioner in 1998. Deanna presented a research poster at the American Academy of Nurse Practitioners conference in June. She works at V.A. Bandon, a community-based outpatient clinic. She has been a nurse practitioner since 1980.

1970  
**Louise (Siepmann) Zmuda** received a master of education degree in special education from the University of Idaho in August 1997. She is an eighth-grade special education teacher in the Bonner County School District in Priest Lake, Idaho. Her son, Jay, is a junior in high school and active in sports. Her daughter, Laura, is a senior at New Mexico State University.

**Charles and Kathy '71 Vanderpool's** youngest daughter, Ruth, is in the freshman honors program at PLU; their son, Virgil, is in the civil engineering program at the Oregon Institute of Technology; and their middle child, Jill, was married in May.

**Patrick Kelly '70, '79 and Lisa Allen '95** were married on July 10 in Bend, Ore. Lisa is a music teacher, and Patrick is the principal of a large middle school in Central Oregon. The couple divides their free time between their nine pets and fishing, boating, skiing, horseback riding and other sports.

1971  
**Katherine (Mancke) Kidd** has a new position as the director of international studies at Fairfield University in Fairfield, Conn. Her daughter, Elizabeth, is beginning her second year at St. Olaf College in Northfield,

Minn., continuing a tradition of Lutheran higher education.

**William Friday** is the director of administrative services for the Fort Worth Housing Authority in Fort Worth, Texas. He is also the national trainer for the National Association of Housing and Redevelopment Officials (NAHRO). NAHRO provides financial management of public and Indian housing authorities. He is treasurer for the Southwest region and past treasurer for the Pacific Northwest region of NAHRO. William is active in other public and affordable housing organizations and has experience in bond issues for purchasing HUD and FIDIC property. For the past 18 years he has enjoyed seeing needy families move into affordable housing. His wife, Carol, is an assistant insurance underwriter for workers compensation in Texas.

1972  
**John Burch** is a member of Faith Lutheran Church in Shelton, Wash. His organization, Spiritborne Productions, provided the lighting, sound and video systems during the Southwestern Washington Synod assembly in June.

**John Beck** earned a Ph.D. in marital and family therapy from the University of Iowa in August 1997. His dissertation examined clergy burn out and job satisfaction. John and his 8 1/2-year-old son, Jordan, moved from Clear Lake, Iowa, where he was pastor of Galilean Lutheran Church, to Portland, Ore. There he married Rev. Joan Hunt, pastor of Bethlehem Lutheran Church. John served as interim pastor at Highland Lutheran Church in La Center, Wash., and now serves at St. Timothy Lutheran Church in Portland, Ore.

## MARRIAGE & FAMILY THERAPY BUSINESS ADMINISTRATION EDUCATION NURSING



### To Qualify for the Alumni Discount:

- You must have *received* a degree from PLU and be *returning* for a master's degree
- You must either have been *officially accepted* into or be *currently enrolled* in a master's program at PLU
- No application is necessary; the discount is automatic as long as you qualify
- Cohort programs qualify, as long as they are master's programs
- Additional master's degrees (second, third, etc.) qualify

### QUESTIONS?

Contact Kerri Fletcher  
Graduate Program Coordinator  
253-535-8312

1973  
**Alvina Olstead** is the 1998 recipient of the Golden Apple Award for excellence in education in the Ferndale and Blaine, Wash., school districts. Students, parents, community members and fellow teachers nominate a teacher who has made a difference in their lives. Alvina teaches full orchestra, strings and general music at Vista Middle School and Central, Eagleridge, Mountain View and Skyline elementary schools. She has also participated in many elementary school musical productions. The most recent was "Fiddler on the Roof" at Central Elementary School.

1974  
**Sarah Jean Cooper** is a nursing instructor at Walla Walla Community College in Walla Walla, Wash. After 20 years in nursing administration, she is enjoying working with students in the classroom and clinical settings.

**Ivan Gorne** is the new vice president for student affairs at Southern Oregon University. He had been the associate dean of students at Edmonds Community College in Lynnwood, Wash. As vice president for student affairs, his responsibilities include enrollment management, overseeing academic resource services, residential and family housing operations, the Stevenson Union and other student services.

1976  
**Doug Ely** has posted a web page for members of the Ivy House (pre-1980). The site address is <http://home.att.net/~lute/luteland.html>.

1977  
**Ruth (Berntson) Stenson** and her husband, Robert, moved to Thief River Falls, Minn., with their three children; Andrea, Robert and David, after spending a year living in married

student housing at North Dakota State University while Robert completed a master's degree in school counseling. Ruth continues to serve as state president of the North Dakota Music Teachers Association.

1978  
**James Nieman** earned a Ph.D. in theological studies from Emory University in Atlanta, Ga., in May. He is a professor of homiletics at Wartburg Theological Seminary in Dubuque, Iowa. His wife, Joann, is a pastor at First English Lutheran Church in Plattville, Wis. They have two daughters, 10-year-old Clara Ann and 1 1/2-year-old Madelene Trayce.

**Virginia "Jimmie" Saffell '78, '80** died of pancreatic cancer on Jan. 27 at the age of 75. A resident of Lakewood, Wash., for the past 40 years, she taught at Ft. Steilacoom Community College (now Pierce College), was past editor of the Lakewood Press newspaper, co-authored a book and was published in various magazines. She is survived by her daughters, Sandra Saffell and Leslie Saffell-Nisbet, and son, John Saffell. She was preceded in death by her husband, Dr. John Saffell, Lt. Col., U.S.A.F., Ret. **Elizabeth James** and her husband, Mark Pease, announce the birth of their son, Timothy, on March 26. He joins 4-year-old Joshua. Elizabeth is technical director at Edu-BioTech Inc., in Boston.

1979  
**Laurie Steele** is a freelance writer and author and was published several years ago in *The Lutheran*. She has received her first watercolor commission, sings in the choir and is the assistant organist at St. Demitrios Greek Orthodox Church in Seattle. **The Rev. Maria-Alma Rainey Copeland**, pastor of Mizpah Lutheran Church in St. Louis, Mo., became the first African American Lutheran



female pastor to be invited to preach at the 84-year-old Hampton Ministers' Conference, the largest and oldest interdenominational conference in America. It is held annually in June at historical Hampton University in Virginia. Maria-Alma, a native of Gastonia, N.C., is also the first African American Lutheran Pastor to be a guest columnist for the Gaston Gazette, her hometown newspaper.

1980

**Matt Solum** and his wife, Dianne, have two daughters, 13-year-old Kristi and 10-year-old Nicole. Matt is flying B-747s with Northwest Airlines in Seattle and KC-135s with the Washington Air National Guard in Spokane, Wash. Dianne is a teacher's aid.



**Gary Falde** was elected vice president of individual insurance at Pacific Life Insurance Company, in Newport Beach, Calif. He attained the Fellow, Society of Actuaries designation in 1985. He joined Pacific Life in 1980.

**Angela Hoffman** is a Benedictine Sister of St. Placid Priory in Lacey, Wash. She received the 1998 Award for Scholarship from the University of Portland, where she has taught since 1989. The award denotes excellence in research as judged by a committee of her peers. Sister Angela teaches chemistry, is engaged in research on taxol, an anticancer agent found in yew trees, and was granted a patent on a process she devised for extracting taxol from yews.

**Patricia Furnish-Mueller** and her husband, Steve, announce the birth of their son, Matthew Edward, on Jan. 22. He joins 3 1/2-year-old Ashleigh, Pat, Ashleigh and Matt joined Steve in Hamamatsu, Japan, in June, where he is part of a support group from Boeing, working with the Japanese self-defense army on its new 767 AWACS. They will be there for two years.

**Kent Tuohino** and his wife, Valerie, announce the birth of their daughter, Joanna, on March 19. She joins 5-year-old Christopher. Kent is a pastor at Tanque Verde Lutheran Church in Tucson, Ariz.

**The Rev. Ladd Bjorneby** accepted a call to serve as the co-pastor at Central Lutheran Church in Yakima, Wash., in July. He and his wife, Kari, have 5-year-old twin girls and would love to hear from friends at [ladd.bjorneby@ecunet.org](mailto:ladd.bjorneby@ecunet.org).

The Alumni Office congratulates **Michael Peterson**, who was recently named Country Weekly's Favorite Male Newcomer. Songs from his hit album, "Michael Peterson," continue to climb the country music charts.

1981

**Munro Cullum** is the president-elect of the National Academy of Neuropsychology, an organization of neuropsychologists with more than 3,000 members. He co-authored his first book, "Introduction to Clinical Neuropsychology," published by Pro-Ed, with Richard Naugle and Erin D. Bigler. Munro is an associate professor of psychiatry and neurology and the director of neuropsychology at the University of Texas Southwestern Medical Center in Dallas. He and his wife, **Heike (Wilhelm '81) Cullum** live in Texas.

**Nancy Soderlund Tupper** is teaching gifted students at Ison School in the Lynden School District in Lynden, Wash. She took six years off to be at home with her and her husband, Geoffrey's, three children. Recently, Nancy has created some fiber art pieces for liturgical settings and is looking forward to doing more.

**Steven Kagele** is practicing pulmonary and critical care medicine in Roseburg, Ore. He and his wife, Patty, have three children, ages 1 1/2 to 6 years old.

### '80s picnic held at Carkeek Park

Grads from the '80s turned out to eat fried chicken, homemade brownies and a host of other goodies at a picnic organized by **John Feldmann '82** and **Curt '83** and **Carol '86 Rodin**, at Carkeek Park in Seattle on Aug. 1. The sun cooperated magnificently, and kids and adults alike enjoyed the outing. It looks like the start of an annual summer event that could broaden to all class years.

PLU Adopts  
Two Stretches of  
Highway: Volunteers  
Needed!



PLU alumni and friends can now get into the clean of things.

The Office of Alumni and Parent Relations adopted two stretches of highway near PLU and is committed to sending groups of volunteers out to clean the areas several times a year. Protective clothing and equipment is provided — you bring the fun!

The Washington State Adopt-a-Highway program is one of many volunteer opportunities you'll see in the coming months as the alumni office looks for a variety of ways to exemplify the university's mission of educating for lives of service.

To volunteer, call 253-535-7415.

## Longtime educator joins Mrs. Locke on tour of China's schools

BY LAUREL WILLOUGHBY, ASSISTANT EDITOR



Their joy in each other's company is evident as Luella (Toso) Johnson '40, '67 happily accepts a painting from a 6-year-old she met at the Beijing Children's Palace.

Look up the derivation of the word "verve," and you're likely to find a picture of former teacher **Luella (Toso) Johnson '40, '67**.

She's 80 years old, and her "typical" day — one that doesn't already include docent duties at the governor's mansion in Olympia or a last-minute flight to visit friends in Minnesota — involves having coffee before dawn, dropping by church, welcoming guests with ginger cookies and gardening at the spotless American Lake home she shares with her husband, Arthur, 92. But Johnson's recent travels have taken her a lot farther than the bicycle she often pedals around her neighborhood. Try the People's Republic of China.

For 10 days in June, Johnson joined 50 other Washington teachers, administrators and child care professionals on a tour of various primary schools, kindergartens, orphanages and other children's facilities in Beijing, Nanjing, Suzhou and Shanghai.

Invited and led by Washington State First Lady Mona Lee Locke, the delegation sought to increase local understanding of China's system of early childhood education and development, and provide an opportunity for the group to exchange ideas with Chinese counterparts. (Participants footed their own bills for the trip.)

The visit was timely for the guests and their hosts alike. In recent years, the Chinese have begun concentrating on education reform. Likewise, a major focus of Gov. Gary Locke's administration has been on education, and Mona Lee Locke has shown a special interest in early childhood education. Both Lockes are of Asian ancestry.

Tagged with such grand titles as Beijing Children's Palace and Su Zhou Experimental Primary School, many of the institutions on the tour offered highly organized and integrated programs with studies in the arts, sciences and technology for children of all ages.

But if you think the impressive schools, the Forbidden City or Tiananmen Square were the most magnificent things Johnson saw on her trip, think again.

"The children we worked with were awe-inspiring. They were very happy and very disciplined. All that other stuff was secondary," Johnson said, dismissing the Great Wall of China with a wave of her hand.

Art time in a kindergarten might not be the place you'd expect to find 50 quiet and respectful 5- and 6-year-olds pointedly not spilling paints or throwing brushes. Yet this mannered behavior was typical of the students Johnson and the group saw throughout their trip.

"It's like we learned from Martin Luther," noted Johnson. "Children want to be good; they just need a nudge in that direction."

And the pictures they produced were no refrigerator art, either. Johnson is having a stunning floral painting, given to her by a 6-year-old, professionally matted and framed to hang in her home (see photo).

Many of the schools were boarding institutions, where even very young children saw their parents only on weekends. Yet far from the child warehouses one might imagine the schools to be, Johnson was struck by the equal degrees of caring and humanity she saw infused into the regimented academic programs. Wherever the tour went, children were taught as much to care for one another as they were to learn from books.

"At a school for the disabled," she said, "it was one student's job just to go around and touch the others." Another was charged with picking up pencils or paintbrushes some of the less-able students frequently dropped. In fact, Johnson noted, visiting children with disabilities and those in orphanages "was worth the whole China trip."

Still, this Far East journey was in no way the final chapter in Johnson's 60-year relationship with education. It's just another gem to add to her collection of experiences that began in a country school in 1938 and hopped through the next six decades in a variety of professional placements: summer schools, evening classes, church groups, the International Family Academy (Norway), vocational instruction, early childhood education, experimental kids' TV programming and children's education posts at the World's Fairs in Seattle and New York City.

Part of that career brought her to PLU during the summers of the '60s and '70s, when she came here to "teach teachers what I learned from children."

So what is next for Johnson? This particular evening, she's having family and friends over for dinner to wish happy birthday to "Opa" (the grandkids' name for Arthur), and as soon as the 92-year-old comes in from cutting the lawn, Johnson's going to set him on peeling spuds so that a dozen people can eat mashed potatoes. She also has to hustle to get the homemade bread and cinnamon rolls into the oven.

But beyond tonight, what does Johnson plan to do with her life?

Not surprisingly, this octogenarian who speaks on the "Joy of Aging — It's an Attitude of Gratitude" said, with a twinkle in her eye, "You ask the Lord."

Johnson is the first of three generations of Lutes in her family. A daughter, Betty (Johnson) Clauson, graduated from PLU in 1966, and a grandson, Troy Toso Helseth, graduated in 1995.



**Edna Rector** was recently accepted to the Ph.D. social welfare program at the University of Washington School of Social Work. She will be doing her research in child abuse prevention and family support.

**Harry Maier** was promoted to associate professor of New Testament at Vancouver School of Theology, British Columbia, in September 1997 and became a fellow at Green College University, B.C. He was recently awarded a Von Humboldt research fellowship at the University of Heidelberg in Germany, beginning in May 1999. He will be researching a forthcoming book on the Book of Revelation in the Bible.

**Timothy Kramer** is an associate professor of music at Trinity University in San Antonio, Texas. He was recently awarded a fellowship from the John Simon Guggenheim Memorial Foundation. The 168 artists, scholars and scientists to be awarded a fellowship were chosen from more than 3,000 applicants. Guggenheim Fellows are appointed on the basis of unusually distinguished achievement in the past and exceptional promise of future accomplishments. Since 1925, the Guggenheim Foundation has granted more than \$180 million in fellowships. Past winners include Joyce Carol Oates and Wendy Wasserstein. As the composer-in-residence at Trinity, Timothy will use the fellowship to support his work on a large orchestra piece being composed for the San Antonio, Austin Civic and Tacoma Symphony Orchestras. Recent performances of his work include the premiere of his "Mimetic Variations," an octet for the Detroit Chamber Winds and a performance of his quartet "Cycles and Myths" at the

College Music Society regional conference in Arkansas. Timothy received his master of music and his doctor of musical arts from the University of Michigan, Ann Arbor.

**Dianna (Koneman) Johnston** was promoted to regional clinical director with the TriWest Healthcare Alliance Central region TriCare contract. Her husband, John, is a heavy-truck mechanic for Ryder in Boise, Idaho, and her son, Matthew, is in the fourth grade.

**Steven Kelley** has a new position as co-director of the Downtown Arts Academy in Tucson, Ariz. The academy is an educational institution for middle school children with special gifts and talents in the visual and performing arts. Steve is leading the way in establishing the nonprofit school that opened in August with more than 200 students. It includes an arts partner mentoring program, linking each student with a local artist or performer for individualized assistance. In May, Steve completed a weekend intensive workshop that was sponsored by the New Warrior, a national network for men.

**Melissa Majar** and Steve Lamoreaux were married on May 24. Melissa left her job as the assistant finance director with the Metropolitan Park District of Tacoma and moved to New Mexico, where Steve is a physicist and technical staff member at the Los Alamos National Laboratory.

**Chris Connerly Benton** has returned to PLU and is the director of academic assistance programs. She had worked at PLU as a peer tutor in academic assistance while she was a student. For the last 15 years she was at the University of Washington: two years as a graduate student, five years

in admissions and records at UW Seattle, and eight years in student affairs at UW Tacoma. Chris lives in Tacoma with her husband, Greg Benton, a project manager at Thomas Cook Architects in Tacoma. They have two children, 7-year-old Max and 4-year-old Colman. She can be reached at [bentoncc@plu.edu](mailto:bentoncc@plu.edu).

**Randy and Cynthia (Nelson) Blank** and their three children are transferring to Barrington, Ill., where Randy has a new position as manager of funding services at GECAL. He has been at GECAL for 16 1/2 years.

**Patricia Witt** has been named care team director for Care Team Ministry, a new program for Foss Home and Village. The program is funded by a faith in action grant from the Robert Wood Johnson Foundation, and will address the nonmedical, quality-of-life needs of frail elders. Patricia will be working with Memorial Lutheran Church and an ecumenical group of congregations in the North Seattle area to recruit and train volunteers to provide transportation to medical appointments, shopping, visits, light house and yard work, and respite for primary caregivers. She recently received a master's degree in nonprofit leadership from Seattle University.

#### 1982

**Linda (Tingelstad-Carlson) Davis** was recently appointed as a small grant panelist for the Metropolitan Regional Arts Council (MRAC) in Carver, Scott, Anoka and Washington counties in Minnesota. The MRAC panelist positions were formed to review proposed grants and determine which grants will be accepted or declined.

# CHRISTMAS FESTIVAL CELEBRATION 1998

Featuring The Choir of the West,  
University Chorale and instrumentalists

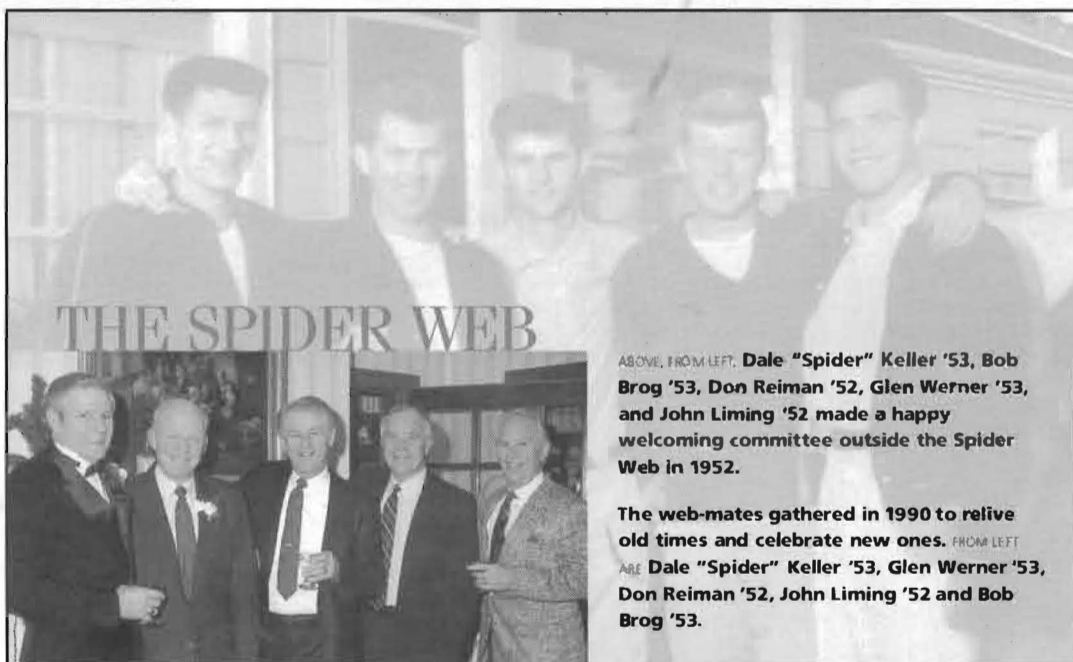
## TICKETS:

\$10 GENERAL, \$5 STUDENTS/SENIORS

Dec. 4	8 pm	New Hope Community Church (Portland)
Dec. 5	4 pm	Eastvold Auditorium
Dec. 6	4 pm	Eastvold Auditorium
Dec. 11	8 pm	Eastvold Auditorium
Dec. 13	4 pm	First Presbyterian Church (Seattle)

Send ticket order (date and number of tickets), your phone number, check and self-addressed, stamped envelope to:

CHRISTMAS FESTIVAL CONCERTS  
Pacific Lutheran University  
Tacoma, WA 98447  
253-535-7602



ABOVE, FROM LEFT: Dale "Spider" Keller '53, Bob Brog '53, Don Reiman '52, Glen Werner '53, and John Liming '52 made a happy welcoming committee outside the Spider Web in 1952.

The web-mates gathered in 1990 to relive old times and celebrate new ones. FROM LEFT

ARE Dale "Spider" Keller '53, Glen Werner '53, Don Reiman '52, John Liming '52 and Bob Brog '53.

## A Window to the Past

PHOTOS COURTESY OF BOB BROG '53

If you were on campus in the early 1950s, you might know about the Spider Web. The blue house just off 112th Street South was home to five fun-lovin' fellas — Dale "Spider" Keller '53, Glen Werner '53, Don Reiman '52, John Liming '52 and Bob Brog '53. It was also a hub of off-campus activity, thanks in part to Keller's famed good cooking. The five friends have stayed in touch over the years through picnics and other activities. Their 1997 summer picnic drew more than 40 spouses, children, grandchildren and friends of the original enthusiasts.

**Chris and Cindy Shultz** announce the birth of their son, Corey Isaac, on Jan. 8. He joins a 3-year-old sister, Kasey.

**Marjorie (Brose) Jacobs** and her husband, Nathan, announce the birth of their son, Jesse Glenn, on April 27. He joins 9-year-old Caleb, 6-year-old Holly and 3-year-old Dustin.

**Jane Kinkel** received a master of arts degree in student development administration from Seattle University last spring. She works at Seattle Pacific University as a counselor.

**Janet (Smith) Cooper** and her husband, Tony, announce the birth of their daughter, Jane Rachel, on Feb. 6. Tony is a civil engineer for VLMK Design Engineers in Portland, Ore., and Janet, a psychotherapist, is a stay-at-home mom.

**Susan (Pomeroy) Wittenberg** and her husband, David, announce the birth of their daughter, Analise Eleanor, on May 30. She was born two weeks before their 16th wedding anniversary.

**Kaaren Roe** and her husband, Mark Hicks, announce the birth of their daughter, Laurel Roe Hicks, on June 17.

#### 1983

**Michelle (Thibault) Koblas** and her husband, David, announce the birth of their daughter, Sonja Marie, on Jan. 14. Michelle is the manager of the local networking support group at Cisco Systems. Her email address is [nikoblas@cisco.com](mailto:nikoblas@cisco.com).

**Michael Givens** and his wife, Kelly, announce the birth of their daughter, Tana Elizabeth, on Sept. 30, 1997. Michael is the owner of Altenried & Associates, which develops affordable housing in Indiana, Alaska, Wyoming,

Oregon and Washington. Tana is their first child, and they are having a great time watching her grow.

**Eric Dooley** and his wife, Jenny, with their five children, 12-year-old Emily, 10-year-old Natalie, 6-year-old Nicole, 4-year-old Rachel and 2-year-old Ian, moved from Phnom Penh, Cambodia, to Ho Chi Minh City, Vietnam, in March 1997. They started a church for English-speaking expatriates. It is the first church allowed in the city since the end of the war. Eric is also the host at an annual conference for pastors of the churches they started in Indonesia, Singapore and Cambodia.

**David Colton**, a district representative for Lutheran Brotherhood, earned membership in the fraternal benefit society's prestigious president's club. Only nine percent of representatives nationwide qualify for this elite club.

**Peter Brunner** is the Pacific Rim sales manager for Pella Corporation, a manufacturer of wood windows and doors. His territory includes all of Asia, Australia and New Zealand.

**Mike Larson** and his wife, Beco, announce the birth of their son, Peter Mack, on April 19.

**Todd and Dawn (Hoeck '88) Davis** announce the birth of their son, Kasey Charles, on Feb. 16. He joins 3-year-old Kody.

**Michael Carlson** has worked for the Sacramento Police Department since 1984, first as a dispatcher, then as a supervisor. In March he was promoted to administrative analyst. Mark and his wife, Bethany, have three children, 9-year-old Christopher, 7-year-old Brianna and 2-year-old Lacey. Christopher will be making his theatrical debut playing the part of "young Joseph" in the Sacramento Light Opera Company's summer



production of "Joseph and the Amazing Technicolor Dreamcoat." He was selected from 450 children who auditioned for the part.

1984

**Jay Abbott** and his wife, Jackie, announce the birth of their twins, Tricia and Ryan, on Dec. 2.

**Charles "Trip" and Leslie (Clark) Edgerton** announce the birth of their daughter, Caroline Elise, on April 11. She joins 4½-year-old Katie.

**Steven Neuder** received a master of divinity from San Francisco Theological Seminary, Southern Calif., on May 23. He attended seminary part time while working in theatre in Los Angeles.

**Dawn (McColley) Darby** and her husband, Paul, announce the birth of their son, Philip George, on April 1. He joins 2½-year-old Ashleigh and 15-month-old William. Paul and Dawn returned to the States from Germany in the summer of 1997 and are stationed at Ft. Bragg in Fayetteville, N.C., where Paul is a doctor. With three children under 3 years old, Dawn is a very full-time mom and homemaker.

**Jean Sensel '84, '87** announced in June, her Democratic candidacy for the District 2, Position 2 seat in the Washington State House of Representatives. She is a member of the PLU Q Club and active in the community.

**John Einar Sandvand** is now the Asia correspondent for the major Norwegian newspaper Aftenposten. He lives in Hong Kong with his wife, Merete Knoph and their children, Johanne, 5, and August, 2. John would love to hear from old friends at PLU; he can be reached by email at [sandvand@netvigator.com](mailto:sandvand@netvigator.com).

1985

**Jean (Ladderud) Coy** and her husband, Robert, announce the adoption of their son, Joshua, in April. He was born on Oct. 19 in Korea. Jean left her job of 12 years at Matsushita Semiconductor in Puyallup to be a stay-at-home mom.

**Craig Johnson** is the new associate pastor at Our Saviour's Lutheran Church in Lebanon, Ore. He is developing a youth and family ministry and providing pastoral help to Rev. Bruce Little. Before taking the position at Our Saviour's, he was the director of the Northeast Seattle Lutheran Youth Association, a cooperative youth and family ministry supported by five Lutheran congregations. He and his wife, Karen, have two daughters, 8-year-old Katharine and 4-year-old Alexandra.

**Todd and Julie (Wicks '86) Giltner** announce the birth of their son, Alexander Dean, on April 27. He joins 3½-year-old Katie. Todd teaches orchestra at Puyallup High School. His chamber orchestra won the state ensemble contest three days before Alexander's birth.

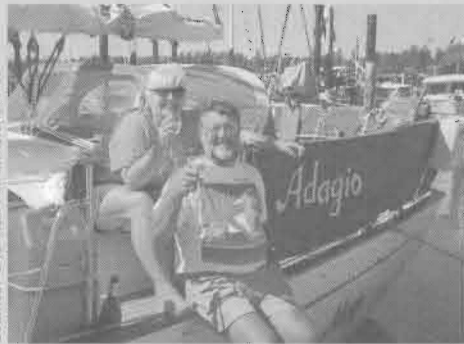
**Stacey (Davis) Nelson** and her husband, Grant, announce the birth of their son, Garrett Alfred, on March 1. Stacey is taking a leave of absence from teaching physical education in the first through eighth grades in the Griffin School District in Olympia, to take care of Garrett.

**Todd Kinkel** recently became a U.S. Secret Service agent. He completed 12 weeks of training at the U.S. Secret Service Academy in Beltsville, Md. He and his wife, Kim, and four children, 9-year-old Kailan, 6-year-old Makena, 4-year-old Hayden and 1-year-old Reid, relocated to Seattle. In five-to-seven years, Todd will be transferred to Washington, D.C., to complete a permanent protection assignment.

**Jerry Johnson** and his wife, Jenny, announce the birth of their son, Dexter McKanna, on March 28. He joins 3-year-old Henry.

## Couple sails 'round the world in 40-foot sloop

BY GAIL GELDAKER CHRISTENSEN '62



Gail Geldaker Christensen '62 and her husband, Dave, celebrate on Bainbridge Island, Wash., after the completion of their seven-year voyage in August 1997.

In 1990 my husband, Dave, and I departed from Prince William Sound, Alaska, in our 40-foot sailing sloop, *Adagio*, on what we thought would be a five-year adventure. It turned out to last seven years. We endured much, saw more than we could ever tell, learned more about ourselves and each other, and met some great people from all over the world both at sea and on land.

We sailed from Alaska to Portugal and back to Seattle with many stops—some long, some short. We rented a car in Portugal to visit Europe and drove to AI, Norway, to visit my family farm. We spent almost three years in the Caribbean working for The Moorings as charter skipper and chef on a 50-foot sailboat.

On the major ocean crossings over the Atlantic, our third son, Sven '91, sailed with us as we headed east. On the westward crossing, our second son,

Lars, was our able mate. Our first son, Jon '86, helped us complete the journey from San Francisco to Seattle.

One of the highlights for us was Christmas in Cartagena, Columbia. We went caroling with a group of cruisers in the neighborhood. The Atlantic islands were also some of our favorite places. The Azores are gorgeous, beautiful, many shades of green, lush, pastoral and floral. The Maderias are spectacular, with walking trails that you can reach by one bus and return back to base by another. The islands are very steep and rugged with lots of green. I tried to absorb as much green as I could to call forth when we were at sea.

We had our first taste of a gale in the Gulf of Alaska. We were not prepared for it, so the cabin looked as if a giant Mix Master™ had been running. The most awesome storm hit us when we were in the Port of Funchal, Maderia. It was called the "storm of the century." While we were in the Caribbean, we went through three hurricanes within 10 months. Fortunately, *Adagio* was secured like a spider in its web between two fingers at the dock and she did not sustain any damage.

We completed an adventure of a lifetime with stories to tell for the rest of our lives. We do not regret taking this time while we were in good health to fulfill a dream. Now we are both at work. Dave is a second mate on the *Spirit of Glacier Bay* for Alaska Sightseeing. I am back in education on Bainbridge Island and studying to update my teaching certificate. We continue to live aboard *Adagio*, which has served us so well.

1986

**Deirdre Reardon-Brown** is celebrating the first anniversary of her medical transcription business. She works out of her home so she can be with her two daughters, 5-year-old Natalie and 3-year-old Amelia.

**Teresa Hoover** is a consultant to home-school teachers and a teacher at Academy Northwest. She has three grandchildren.

**Brad Johnson** and his wife, Grace, announce the adoption of their daughter, Katrinna Mae. Katrinna was born on May 4, 1997, in Archangelsk, Russia. She joins 4-year-old Evan. Brad completed his first year as the manager of fleet support services at Suburban Propane LP in Whippany, N.J.

**Marie Gettel** was promoted to Northwest regional publications manager at CH2M Hill, an environmental consulting firm, in 1996. She manages 70 people on the publication staff throughout the Northwest and Alaska. Marie and her husband, Michael Gilmartin, had their son, Christopher, in August 1996. He was born prematurely at 24 weeks, weighed 1 lb., 6 oz., and was only 11 inches long. Christopher spent four months in the neonatal intensive care unit and is now a thriving little toddler. They truly understand the power of hope.

**Birdena (Melton) Coate** and her husband, David, announce the birth of their daughter, Lauren Alicia, on April 18. She joins 3½-year-old Shane. Birdena has changed careers and is working at Boeing as a computing representative. She was recently promoted to a lead position.

**Ronald Cook** is the assistant division controller at PACCAR in Renton, Wash. PACCAR is the parent company of Kenworth and Peterbilt trucks, and owns AP's Auto Supply and Grand Auto Supply. PACCAR is a

Fortune 300 company with offices worldwide.

**David Kangas and Julie Rains Kangas** announce the birth of their daughter, Brianna Rain, on May 17. David is a teacher at Charles

Wright Academy in Tacoma and Julie is on maternity leave from teaching, until January 1999.

**Kirsten (Olson) Wees** and her husband, Joel, announce the birth of their son, Patrick Ashton, on Jan. 7. He joins 4-year-old Brianna and 2-year-old McCall. Joel was promoted to captain at Horizon Airlines in May. They can be reached at [J.Wees@Juno.Com](mailto:J.Wees@Juno.Com).

**Scott Menzel** is a business process designer at Sears Credit. He and his wife, Susan (Koenig '86), and their two children, 6-year-old Heather and 3-year-old Shea, have moved from Southern California to the Chicago area.

**Brian O'Morrow and Kristen DeBoer '87** announce the birth of their son, Daniel Joseph, on April 24. He joins 3½-year-old Emily.

**Pete Peterson** received limited partnership with Edward Jones Investments after only four years with the firm. He says, "Hey," to the first-floor Cascade guys of 1982-83.

**Karla Houk** is a registered nurse and community liaison at St. Mary Regional Cancer Center in Walla Walla, Wash., and was named to the Ambassador 2000 program by Oncology Education Services, Inc. The program is supported by an educational grant through Bristol-Myers Squibb Oncology/Immunology, and promotes the role of the oncology nurse to advance the public's knowledge about the supportive care of individuals with cancer. As an ambassador, Karla will be educating patients, healthcare providers, policy

makers, and the public about current and evolving clinical practices to improve outcomes of cancer care, specifically issues that relate to pain, fatigue and nutrition. Her other positions at St. Mary's have been radiation therapy nurse, chemotherapy nurse, relief nurse supervisor and manager of the Herring Guest House. Karla also belongs to the Columbia Basin Chapter of the Oncology Nursing Society; she volunteers with the American Cancer Society, and serves as president and chairperson of the patient service committee of the Walla Walla Unit. She recently completed a term as a member of the breast cancer task force.

1987

**Ruinoe Connally** recently returned from a church mission trip to an orphanage in Linares, Chile (about 240 km south of Santiago). The team of 21 built a new school for the boy's orphanage. Beginning with a concrete slab, they constructed four classrooms, a library, cafeteria, kitchen, pantry, secretary's office, director's office, bathrooms and showers. The full details can be found at [www.bayocity.com/chile.nsf](http://www.bayocity.com/chile.nsf).

**James Daly** and his wife, Yuko, announce the birth of their son, John Daichi, on Jan. 24. They have returned to the United States after teaching in Japan for eight years.

1988



**Mollie McCarty** left KBCI-TV, a CBS affiliate, after anchoring and reporting the news for 7½ years, to take a position at Elgin Syferd Drake, an advertising agency in Boise, Idaho. Her new job as a public relations specialist began in September 1997.



### PLU alumni window decals

Wear your alma mater pride — on your car — with a new alumni window decal! The 2 ½" x 4 ½" black and gold static-cling window decals are complimentary. Simply call the Office of Alumni and Parent Relations, 253-535-7415 or 800-258-6758.



**Chris Olsen** recently accepted a position as manager of sales and operations for the Northwest region at National Mobile Television.

**Brenda Ray Scott** assumed the position of development coordinator with Providence Child Center Foundation on Dec. 29. In her spare time, Brenda continues to sing with other PLU alumni in the Portland Symphonic Choir.

**Charles "Bryan" Colson** works at Western Wireless, a telecommunications company in Bellevue, Wash. He was promoted to office manager and travel manager on April 1.

**Eric and Kimberly (Wilson '89)** Olson announce the birth of their twins, Matthew Issac and Katrina Suzanne, on Jan. 29. They join 3-year-old Joshua Brien. Eric is a family physician and Kimberly is a stay-at-home mom.

**Lisa Pollman** is in the University of San Francisco's Asia-Pacific Liberal Studies Master of Arts program. She looks forward to a career in cultural consulting, promoting better understanding and communication between Asian and American people.



**Chuck and Christine (Brooks) Harris** announce the birth of their son, Thomas Robert Brooks Harris, on May 24.

**Susan (Donovan) Winton** and her husband, Craig, moved to Western Australia from New Zealand. Craig has a new position as account manager at BHP.

**Dirk and Gena (Wadsworth '89)** Vincent announce the birth of their son, Aaron Louis, on March 26.

#### 1989

**Dave Pearson** has returned to the Seattle area to be the director of public relations for the Seattle Seahawks. He spent the last four years as media relations director for the Houston/Tennessee Oilers. Dave was a public relations intern for the Seahawks in 1989-90 following his graduation from PLU. He and his wife, Beth, have a 3-year-old daughter, Allison, and a 7-month-old son, Chase.

**Jerry and Jenny (Johnson) Gard** announce the birth of their daughter, Emily Marie, on March 12. Jerry is a computer software engineer at Traveling Software in Bothell, Wash., and Jenny works part-time as an ultrasonographer at Cascade Valley Hospital in Arlington, Wash.

**Lisa (Hussey) Ferraro** and her husband, Joseph, announce the birth of their son, Tyler Joseph, on Sept. 16, 1997. Lisa is a major gifts officer at the University of Connecticut and Joseph is a police officer. They coordinate their schedules to share in the care of their new addition.

**Christian Scharen and Sonja Batalden '90** announce the birth of their son, Isaiah Abner Batalden Scharen, on March 28. Sonja is a nurse-midwife, and Christian is a Ph.D. student in ethics.

**Dave DeMots** started his own business, DLX Advertising, in Portland, Ore., in January.



**Larry Walters** and his wife, Gina, were married on Sept. 27, 1997, in Kankakee, Ill. Larry is an anesthesiologist and was promoted to

chief resident in the department of anesthesia at the University of Arizona in July. He will complete his residency in December. Gina is a registered nurse.

**Karen (Moore) Ash** and her husband, Dean, announce the birth of their son, Braden Gregory, on April 4. He joins 2 1/2-year-old Logan Robert.

**Cari (Rue) Black** and her husband, Jason, announce the birth of their son, Samuel Dean, on Feb. 6. He joins 3-year-old Spencer Allen.

**Melissa (Phillips) Maxson** and her husband, Peter, announce the birth of their son, Jacob Elijah, on April 16. He joins a two-year-old sister, Callie.

**Darin and Shannon (Roberts '92) Dollemore** announce the birth of their daughter, Shelby Marie, on April 2.

**John Schoenberg** and his wife, Debbie, announce the birth of their son, Michael Lorange, on March 13. He joins 13-year-old Nathan and 11-year-old Jared. John is a Title I coordinator and physical education teacher in the Kila School District in Kila, Mont., and Debbie is an assistant floor manager and computer graphic artist at the Daily Interlake in Kalispell, Mont.

**Dale Haarr and Jennifer Ostrum** were married in September 1997 in Billings, Mont. Jennifer is a physical therapist at Saint Vincent's Hospital, and Dale is in his third year as an investment executive with Paine Webber.



**Julie (Brooks) Meulemans** and her husband, Steve, announce the birth of their daughter, Kate Riley, on May 17.



**Shelly (Carlson) Carlisle** and her husband, Kevin, announce the birth of their daughter, Giorgi Lynn, on May 22. She joins 6-year-old Brianna. Kevin and Shelly recently

moved to Portland, Ore., from Vancouver, Wash. She left her job as campus manager for student housing at Portland State University, to be a full-time mom and homemaker.

**Brendan and Kelly (Mickelsen) Rorem** announce the birth of their daughter, Alison Elise, in January. She joins 3-year-old Kathryn Anna. Brendan has a new position at ENSO, in Seattle and Kelly is a second-grade teacher in the Auburn School District.

**Brian and Maria (Wienhold) Raynes** announce the birth of their son, Kaelan Mathias, on June 15. Maria is a report taker for the Anchorage Police

Department, and Brian is a land survey assistant for the Alaska Department of Natural Resources.

**Michael and Kristin (Baldwin '93) Maland** announce the birth of their daughter, Lauren Elizabeth, on June 7. Michael owns Maland Communications, an audiovisual sales, rental and wireless services company, started in 1993. Kristin has been accepted into the diagnostic ultrasound program at Bellevue Community College. She has worked at Summit Cardiology since graduating from PLU.

**Paal Ryan and Elizabeth Allen** were married on Jan. 17. Paal is an engineer, and Elizabeth is an attorney.

#### 1990

**Marsh Cochran** joined Business Technologies Consulting Group, Inc. of Boston. He is a staff consultant specializing in business process re-engineering and business requirements planning in the financial services industry.

**Frank and Tracie (Barrons) Johnson** announce the birth of their son, Evan Noren, on Feb. 12.

**John and Angie (Miller '91) Skibiell** announce the birth of their daughter, Danielle Marie, on April 5. She joins 2-year-old sister Madison.

**Paul and Christen (Harvie) Stockdale** live in Birmingham, Mich. Paul works at Ford Motor Company in powertrain purchasing, and Christen is corporate counsel for Domino's Pizza International, Inc.

**Del and Kristy (Jerke) Lofton** announce the birth of their son, Zachary Donald, on April 7. He is a beautiful boy who already has more hair than his dad.

**Timothy Farrell** and his wife, Kimberly, announce the birth of their daughter, Kathryn, in April. Timothy is the director of bands and brass at Valley City State University in Valley City, N.D., and Kimberly is a music teacher at Mapleton Elementary School in Mapleton, N.D.

**Kenny and SueAnn (Garrison) Brydson** announce the birth of their son, Corey Lee, on April 29. He joins 2-year-old Erin Samantha.

**Tracy (Colter) Carpenter** and her husband, Rick, announce the birth of their son, Austin Lyle, on May 28.

**Nancy Ascher** is a medical sales representative for Otsuka Pharmaceuticals.

**Brent Grauerholz** is in his third year of training in family practice medicine in Erie, Pa., and was appointed chief resident. He will complete his residency in June 1999.

**Sarah Agsten** finished her residency in family medicine in Portland, Ore., and has joined a group practice in Roseburg, Ore.

**Julie (Wilson) Spackman** and her husband, Bob, announce the birth of their daughter, Lillian Joyce, on May 26. Julie loves her new career as a mother.

**Mark Brovak** moved to Bellingham, Wash., to work at Trillium Corporation as a financial reporting manager.

**Sean Neely** received a master's degree in library and information science from the University of Washington in June 1997. He is a technical training consultant at Technology Resource Institute, a non-profit partner with the Gated Library Foundation. He travels throughout the U.S. networking public libraries and conducting initial staff training.

#### 1991

**Cheryl Dupras** and her husband, Jim, announce the birth of their daughter, Alexis Leilani, on Feb. 28. Cheryl is currently with the JAG Corps serving as special assistant U.S. Attorney at Ft. Shafter, Hawaii. She is a 1994 graduate of the University of Puget Sound School of Law. Jim is serving with the MP Corps as a company commander.

**Kristina Pfendler** completed her Ph.D. in developmental biology at Northwestern University in Chicago and has accepted a postdoctoral

position at the University of California, San Francisco.

**Ryan and Julie (Henning '92) Hamlin** announce the birth of their son, Braden Richard, on April 3. He joins 2-year-old Caleb Ryan.

**Kristin (Grover) Shelton** and her husband, Brian, announce the birth of their son, Andrew Warren, on Dec. 22. Kristin works part-time as a physical therapy assistant and Brian does technical support for a brokerage firm.

**Scott and Anne '95 McMillan** announce the birth of their son, Harrison Scott, on March 24. He joins 3-year-old Darby.

**Ken Brown and BJ Chandos** were married on March 21 in Seattle. Ken earned his MBA from the University of Washington in June and is now a financial analyst at Hewlett Packard in Boise, Idaho. BJ was a respiratory therapist at Overlake Hospital in Bellevue, Wash., and plans to do the same in Boise.

**Warren and Lori (Dorn) Beymer** announce the birth of their daughter, Elizabeth Grace, on May 21. She joins 2-year-old Joshua. Warren was promoted to account executive at Market Decisions Corp. in Portland, Ore., and Lori, working part-time as a social worker, left her job to become a stay-at-home mom. They are enjoying their new home in Sherwood, Ore.

**Beth Anne Newbill** is a senior program analyst at Raytheon Systems Company/ISSI in Washington, D.C. She can be reached at [BANewbill@juno.com](mailto:BANewbill@juno.com).

**Brenda (Schutt) Snyder and Brad Atencio** were married on June 26. Brenda is a clinical manager in the surgical unit at Kadlec Medical Center in Richland, Wash., and Brad is an engineer at Pacific Northwest National Laboratory in Richland.

**Heidi (Porter) Stenzel** and her husband, Casey, announce the birth of their daughter, Carley Anne, on April 1.

**Eric Cultum and Sandy Bradley** were married on June 20 at Overlake Christian Church, in Redmond, Wash. Eric is a school principal and Sandy is a cosmetologist.

Sorry - I'm going to the **PLU Bookstore** to buy a **hat** and some **gloves** for the game on Saturday.

I'm going, too! I need a new **jacket**, and they have great **Christmas presents** for everyone on my list!

Want to study later?

Would you pick me up a **stadium seat** for the game - those benches get cold!

THE PLU BOOKSTORE — VISIT US ON CAMPUS OR CALL US AT 253-535-7665



## Determined pastor fights to preserve the confidential nature of the pastoral office

BY MICHELLE MILLER, EDITORIAL ASSISTANT



In the middle of a fight pitting religious freedom against the state's right to criminal evidence, Rev. Rich Hamlin '84 stands true to his religious beliefs.

"It's a fight worth fighting," declared the Rev. Rich Hamlin '84, who is in the middle of a fight pitting religious freedom against the state's right to criminal evidence.

Hamlin, pastor of Evangelical Reformed Church in Tacoma, got a call on July 7, 1997, from a woman seeking a minister to meet with her son. Hamlin met with the man and provided him prayer and spiritual counsel as he unburdened his soul. Three days later the young man, Scott Anthony Martin, was arrested and charged with second-degree murder in the death of his 3-month-old son. When the case came to trial, Martin tried to keep Hamlin's testimony out by citing the state's priest-penitent law protecting confessions.

The prosecutor argued that the priest-penitent privilege doesn't apply because only certain denominations, such as Catholic, Greek-Orthodox and Episcopalian, have the privilege of confidentiality.

"The competing values between church, state, justice and the pastoral office are not easy matters," Hamlin said. "These are issues that have far-reaching implications for the entire church.

The confidential nature of the pastoral office must continue to be recognized, protected and maintained. If it is not, the fundamental nature of the relationship between clergy and parishioner changes."

As Martin's case progressed, the county prosecutor ordered Hamlin to a deposition, where Hamlin respectfully refused to disclose the confidential statements made during Martin's confession. The pastor was then brought into court and found in contempt. The Pierce County Superior Court ruled that no clergy has the right to confidentiality regardless of denomination.

"There's not even an acknowledgment that the judicial system is stepping into the sovereignty of the church," Hamlin said.

Hamlin was then ordered to the Pierce County Jail. His lawyer, however, was able to obtain an appeal hearing before he was scheduled to go to jail, which froze the incarceration order. In July 1998, the Washington State Court of Appeals reversed the lower court's ruling, stating that "confession is a necessary component of his (Hamlin's) religious practice . . . it is a duty that the pastor must fulfill based upon the tenets of his faith."

Hamlin is thrilled not only that he won't be going to jail (barring an appeal), but also that case law has been established.

"This is a published opinion. Clergy in the future can rightly look someone in the eye and say "What you do tell me is confidential."

Prosecutors may appeal that ruling, which would take the case to the state Supreme Court. Martin, who has been held in the Pierce County Jail since July 1997, will go to trial after any appeal process is complete.

Looking back, would Hamlin have done anything differently?

"No," said Hamlin. "I'm not arguing that the pastoral office is a vault. I'm arguing that the pastor has to weigh the ethics of the entire situation and the competing values — justice and the pastoral office. And, in this case, the pastoral office needed to be protected."

The pastor's involvement in the case has taken him to Washington, D.C., where he was asked to testify before the congressional subcommittee on the Constitution in February 1998. The subcommittee is reworking the fundamental elements of the Religious Freedom Restoration Act, which was declared unconstitutional by the U.S. Supreme Court in summer 1997, Hamlin said. Supporters are hoping to have a new law in effect this fall.

Between appeals and hearings, Hamlin's primary responsibilities lie with his 65-member church. He is also the assistant director of Youth for Christ, a mission organization that works with nonchurched youth and their families.

After earning a bachelor's degree in education from PLU, Hamlin taught high school for four years. He will soon complete his master's degree in pastoral ministry from Trinity Theological Seminary.

PLU is a long-standing tradition in the Hamlin household. Parents, Richard '59 and Joann '60; and brothers, Randy '85, Rod '88 and Ryan '91 and all know what it means to be a Lute.

Since those days, Hamlin has kept in touch with three other alums also in full-time ministry. For the past eight years, Rusty Carlson '86, Jeff Clare '84, Scott Sears '86 and Hamlin have met every two weeks for accountability, prayer and ministry perspective.

Hamlin and his wife, Lynn, have three children, Isaiah, 6; Claire, 4; and Joel, 2. They live in a 96-year-old farmhouse in Tacoma, where they enjoy spending time as a family.

### Make the link with . . . LUTELINK

A career mentoring program connecting current students and alums. Become a member and help guide students and recent graduates within their chosen career paths, or as an alum use LuteLink for career changes. If you are moving you can also use LuteLink for PLU contacts in your new geographic area.

If you would like to become a mentor or want to use this service for yourself, call the Alumni and Parent Relations Office at 253-535-7415 or 1-800-258-6758.



GET CONNECTED

1992

**Jacqueline Keeler** recently opened Asante, a European day spa in San Rafael, Calif., after studying spa management in the Czech Republic. She and Caroline Harrison sold their house and bought a boat to live on.

**Nori Wendt** is a stay-at-home mom with her 3-year-old son, Patrick, in Fort Bragg, N.C. Her husband, Jay Cash '93, is serving in Bosnia with the 21st MP Company (Abn) as part of the multinational stabilization force. His deployment is scheduled to last six to nine months.

**Thor Ivar Hellesoy and Tone Reinertsen** were married on May 30 in Oysleo, Norway. Thor received an MSci in marine engineering from the University of Technology, Delft, the Netherlands, in December 1997 and is working as a ship designer. They will be in the Netherlands for three years while Tone finishes her MSci in industrial design.

**Andy and Katie (Davis) Finley** announce the birth of their daughter, Bailey Frances, on May 17. She joins 2-year-old Dawson.

**Jun Chea** and his wife, Jeannie, announce the birth of their daughter, Faith, on May 12. Jun is assistant vice president, branch manager and KeySales leader at Key Bank of Washington in University Place.

**Kimberly Neu** is in patient billing services at Alpine Home Health in Sandpoint, Idaho. Her guide dog, Sage, is doing well at work and play on the farm. Kimberly raises and trains Norwegian Fjord horses and can be reached at [kimneu@micron.net](mailto:kimneu@micron.net).



**Troy and Cheryl (Kragness '93) Brost** announce the birth of their son, Alexander Grant, on Dec. 20. Troy is vice president and Cheryl is corporate secretary of Royal Property

Corporation. They are completing the development of a premier manufactured home community for seniors in Eugene, Ore.

In May, **Rebecca Benson** joined Jefferies & Company, a broker, dealer, investment bank and trading house in San Francisco. She is working to broaden the business services equity research group.

**Thad Person** received a master of divinity degree from Luther Seminary in St. Paul, Minn., on May 24. He served a year-long internship at the English-speaking Lutheran congregation in Ngaoundere, Cameroon, under the guidance of Rev. Thomas Christensen. Thad was awarded the graduate preaching fellowship, which allowed him to spend the summer traveling and studying in his wife's native Ireland.

**Maria (Parfit) Pederson** received a master of divinity degree from Luther Seminary in St. Paul, Minn., on

May 24. She served a year-long internship at Camano Lutheran Church in Camano Island, Wash., under the guidance of Rev. Lowell Stordahl '61. Maria and her husband, Jonathan, also a Luther Seminary graduate, are awaiting calls to serve parishes in Wisconsin.

**Julie Blum** received a master of divinity degree from Luther Seminary in St. Paul, Minn., on May 24. She served a year-long internship at Central Lutheran Church in Bellingham, Wash., under the guidance of Rev. Leonard Ericksen '59. She was assigned to the Eastern Washington/Idaho Synod of the ELCA, and is awaiting a call to serve in a parish.

**Edward Running** graduated from the University of Oregon in June with a master's degree in architecture. Within days he was on his way to Copenhagen, Denmark, to begin a teaching position at the Royal Academy of the Arts and Architecture.

1993

**Chad Bentsen** and his wife, Kristen, announce the birth of their daughter, Emma Paige, on Jan. 4.

**Brian and Lisa (Langsdorf '92) Rybloom** will be moving to Oslo, Norway, at the end of summer. There, Brian will help open a new IKEA store and serve as a sales manager through August 1999. Lisa plans to study Norwegian language and culture and host visitors.

**Jonene (Zimie) Bernhardt** was recently promoted to community and government relations specialist at Paragon Cable TV in Portland, Ore. She oversees the charitable donation campaigns, employee volunteer efforts and ensures compliance with national and local regulatory requirements. She also handles various media, educator, employee and customer relations responsibilities. Jonene serves on the Multnomah County Advisory Committee for the Start Making A Reader Today program and volunteers weekly to read with two children. She is a certified presenter of the "Taking Charge of Your TV!" workshop developed by The Family and Community Critical Viewing Project, working to promote literacy skills.

**Carolyn Morrison Fulton** received a graduate assistantship from Florida State University, where she will begin doctoral studies in music education and ethnomusicology. Her two children are glad to have her back "on the continent" after spending two years living and traveling in Bangkok, Thailand, where she was a music teacher at the International School of Bangkok. Recently, seven of her Trinidad Carnival photos were selected to appear in a new Garland Encyclopedia of World Music.

**Jay and Robin (Buck '94) Evans** announce the birth of their son, Tyler Joseph, in April.

**Masahiro Mori** has been a temporary software tester since January 1997. He lives in Seattle with his American roommate, Alan, and New Zealander roommate, Greg.

**Kristin (Stevens) Koskinen** and her husband, Sean, announce the birth of their son, William Baley, on May 16. Kristin is a registered dietician practicing clinical nutrition in Ewa Beach, Hawaii, and Sean is a physician completing his residency in radiology at Tripler Army Medical Center in Honolulu.

**Kristin Johnson-Campbell** received a certificate of ordination and a church charter for Living Rock Ministries, an Internet ministry with online Bible study and prayer. Kristin also started Creative Light Design, a business that builds web sites for churches and Christian businesses. She can be reached at [www.angelfire.com/biz/creativelightdesign/1.html](http://www.angelfire.com/biz/creativelightdesign/1.html). Kristin and her husband, Christopher, were married on July 2, 1994.

**Rhonda Jones and Charles Wilkins** were married on April 19 in Tacoma.



Rhonda is a registered nurse and was promoted to assistant director of nursing service at Jefferson House Care Center. Charles is the floor manager at the Paradise Card Room. **Outi Francis** and her husband, Steven, announce the birth of their child, Matias Francis, in December. Outi is the operations manager at Concord Technology, and Steven is a national account manager at MCI Communications.

**Laura (Manderscheid) Davis** and her husband, Jason, announce the birth of their son, Nathaniel Ryan, in March. Laura is a marketing specialist at General Services Administration.

**Lynn Mason** is a teacher in the Corvallis School District in Montana. He is also the assistant football and wrestling coach. He started the archaeology club and teaches drivers education.

**Lea (Dayberry) Crouch** and her husband, David, announce the birth of their daughter, Natalie Kate, on May 17. She joins 16-month-old Allyson Anne.

**Laura Russell and Jay Cabe** were married on Aug. 16, 1997, in Raymond, Wash. Laura is an associate territory business manager at Bristol-Myers Squibb Pharmaceuticals in Portland, Ore., and Jay is an account executive at AT&T Wireless Service.

**Jennifer Graham and David Hampton** were married on July 4 at the Schmidt Mansion in Tumwater, Wash. **Julie (Cruikshank '93) Siepmann** was the maid of honor. Jennifer is an assistant portfolio manager, and David is an account manager. They can be reached at [jmg@aol.com](mailto:jmg@aol.com).

**Matt Kees** and his wife, Kymberly, announce the birth of their twin sons, Aidan and Griffin, on March 4. They join a sister, Amanda, and a brother, Keegan.

**Scott Welborn** was named the new head football coach at North Pole High School, a AAAA high school in Fairbanks, Alaska. He can be reached at [scotty@northstar.kiz.ak.us](mailto:scotty@northstar.kiz.ak.us).

**Carla (Putvin) Derie** and her husband, Mike, announce the birth of their daughter, Sarah Michelle, on April 10. She joins 2-year-old Trevor.

In July, **Greg Hanson** was promoted to bank manager at Washington Federal Savings Bank in Woodburn, Ore., where he has worked for four years. **Sivhong (Go '93) Hanson** teaches a first- and second-grade multiage classroom. They recently bought a home in Salem.

**Gary Hogan-Underdahl** was named to the 1997-98 Dean's Honor List at Hamline University School of Law in St. Paul, Minn. He is a law clerk in downtown Minneapolis and will graduate in 1999.

**Kim (Nirk) Waterstraat** and her husband, John, were married on July 12, 1997, in Puyallup. Kim is a fourth grade teacher in Puyallup, and John works for Fireside Heating and Air. They recently bought a home in the Puyallup valley.

#### 1994

**Svend Stendahl** was promoted to OEM technical account manager at Microsoft.

**Abigail Blankner** received a master of theological studies from Emory University last spring.

**Mark Carrato** has been traveling around the world and expects to end his trip in Central America in November. During his travels he became a deep-sea diver and enjoyed free-fall sky diving.

**Tofa McCormick** began a new position as marketing coordinator, overseeing two divisions at Safe Works, LLC, in April. Safe Works is a global provider of suspended power access equipment based in Kent, Wash. He earned an MBA in marketing and management from City University, where he worked for three years.



**Peter William Guertner** died May 22 in a car accident in Japan. Pete received his degree in broadcasting and communications and will

be remembered by classmates and friends as an easy-going, lively person who always had a smile to share. Pete lived in Hong Hall and was instrumental in the emergence of LollaPLUza, which continues as a PLU tradition. In the evenings, students could hear Pete's voice over the airwaves of KCCR student radio. He interned at KPLU 88.5 FM. More than 150 friends and relatives gathered June 7 to celebrate Pete's life. Remarking at the memorial service friend, Chris Albrecht '94, said of Pete, "... he showed up on campus with a RUN-DMC T-shirt and untied tennis shoes and left with a large and diverse collection of friends." Pete was a member of the Washington National Guard and involved in gifted and honors programs throughout his education. He is survived by his mother, Dianne Newsom; father, William Guertner; step parents, Louis Newsom and Eva Guertner; sister, Michelle; brothers, Quincy and Louis; grandparents, Frank and Lois Guertner, Dice and Pattie Heats; and a host of family and friends.

**David Berndt** received a doctor of medicine degree from the Medical College of Wisconsin on May 16. He will serve an internal medicine residency at the University of Wisconsin in Madison.

**Shannon Tilly** entered medical school at the University of Colorado in September.

**Jim and Mari (Yokers) Matthias** announce the birth of their daughter, Sidra Holian, on June 1.

**Kirstin Jensen** entered the master in education program at PLU in June.

**Aaron and Lori (Golliet) Tang** announce the birth their daughter, Danielle Renae, on June 11.

**Coriander Krause** was awarded the Air Force Commendation medal and selected for promotion to captain. She is in the master of science, family nurse practitioner program at Troy State University in Alabama.

#### 1995

**Dawn Collins** was promoted to cost analysis manager at U.S. West Communications in June 1997.

**Katherine (Swenson) Murray** and her husband, Mitchell, announce the birth of their son, Ian Patrick, in March.

**Kelsey Johnson** earned her juris doctor degree from Wake Forest University in Winston-Salem, N.C., on May 18.

**Brian Pochert and Mary Zylstra '98** announce the birth of their son, Gavin Lloyd, on June 6. Mary is in the master's with certification in education program at PLU, and Brian has worked for the Kennewick Police Department since August 1997.

**Sara Brown** and Cody Hartley were married on Feb. 14 in Samuelson Chapel at California Lutheran University in Thousand Oaks. Cody is a '91 grad of CLU, where both he and Sara are admissions counselors. **Bobbi Junell '98, Melanie Van Engen '96, Jennifer Yelle '96** and **Michelle Werre '96** were in the wedding. **Mike Fuller '94** and **Erin (Koster '95) Fuller** attended the wedding.

#### 1996

**Curt Mulder** and Rachele Snowdon were married on April 4 in Tacoma. Rachele is a teacher in Sumner, Wash., and Curt is a detention officer and football coach.

**Kimberly Mooneyham** is in the master of education program at the University of Minnesota.

**Sarah Zieske** and Jason Kruger were married on Nov. 20, 1997, in Colorado Springs, Colo. Jason is a first lieutenant in the U.S. Army. He

is from Monticello, Minn., and a graduate of St. John's University in Collegeville, Minn.

**Brian Perron** finished a year in Germany as a Fulbright Scholar, researching environmental policy with a recycling emphasis. He is now attending William and Mary School of Law.

**Yun (Ellie) Jiang** works for Boeing in marketing, airline analysis.

**Marneta Hoel** and her husband, Steve, announce the birth of their son, Tyler Arvid, on Nov. 4.

**Alexis Johnson** received a master of public policy and administration degree from California State University, Sacramento, on May 22.

#### 1997



**Aaron Christian and Julie Hankel '96** were married on April 18 at Trinity Lutheran Church in Tacoma. Their wedding party included **Heidi**

**Robinson '96, Kristie Giese '96, Cindi Brown '96, Jennifer Baddgor '96, Greg Ennis '97** and **Andy Tomlinson '97**. Julie entered graduate school at Washington State University in September, and Aaron is the video director for men's basketball at WSU.

**Kristina (Hansen) Swenson** is pursuing a master's degree in accounting at the University of West Florida in

Pensacola, Fla., while her husband, Aaron, is at Naval Air Station, Whiting Field, training to be a pilot.

**Mary (Blorigren) McFarlin** and her husband, Rex, announce the birth of their daughter, Annika, in December.

**Debbie Lindstedt** taught elementary music for two years and is now at Norfolk Christian School in Norfolk, Va., teaching high school and middle school choir. Her daughter, Nicole, is in her second year at Virginia Wesleyan, pursuing a pre-med and vocal double major. Her daughter, Rachel, is a high school junior and plans to become a piano professor.

**David Carlson** is teaching English at Gansu University of Technology in Lanzhou, China. He will be there for at least a year.

**Karyn D'Addio** worked with Americorp this past year. She has been accepted to the University of Health Sciences College of Osteopathic Medicine in Kansas City, Mo., where she is studying to be a general practitioner.

**Jeremie Lipton** is attending Northeastern University School of Law in Boston.

**Devra Sigle-Hermosilla** and her husband, Miguel, announce the birth of their son, Mauricio Raul, in November 1997. Devra is attending Seattle University School of Law.

**Katherine Farneli** and Anthony Schwab were married on July 25. Katherine is a registered nurse at

Allenmore Hospital in Tacoma and Anthony is a service technician at TCI Cable in Tacoma.

### Author's Bookshelf

#### 1984

**Rosemary Jones** is the author of "Educational and Career Opportunities in Alternative Medicine," a resource for anyone contemplating a career in natural medicine. It is the first book to provide all the information in one place on all the naturopathic, osteopathic, and chiropractic doctor programs available in the United States. She believes the "hardcore" journalism skills she gained under Professor Cliff Rowe here at PLU, prepared her for this project. From the time she sent the query letter to the publisher, to the final deadline for the first draft, she had six months to track down and interview 200+ admissions directors, teachers and students. The book has been endorsed by several Northwest schools and professionals. Rosemary can be reached at [healingpgs@aol.com](mailto:healingpgs@aol.com).

#### 1988

**Greg Schuster** completed the first edition of "Handbook of Clinical Dental Assisting," published by the W.B. Saunders Co., in September. His wife, Julie, is a registered nurse at Mary Bridge Children's Hospital in Tacoma.

### Faculty, Staff and Friends

**Samuel Carleton**, modern and classical languages, 1969-1981, retired in June as director of the Savannah, Ga., campus of the New York City-based School of Visual Arts. He and his wife, Elaine, live in Savannah's historic district where they have a bed and breakfast. Their home appeared as Joe Odom's house in the Clint Eastwood movie, "Midnight in the Garden of Good and Evil." Sam would enjoy hearing from former colleagues and students.

**Rick Kaps**, husband of **Kay (Overly) Kaps '75, '89**, died on Feb. 3 of lymphoma. He had retired from the Sequim School District in Sequim, Wash., where he was a physical education teacher and coach.

**The Rev. Kathleen O'Connor**, sociology, '77-'87, has a new position as pastor and CEO of outreach ministries at Potter Park United Methodist Church in Lansing, Mich., that includes a community kitchen, after-school computer and learning games, and many other services. Her student associate pastor work at Delaware's Zion African Methodist Episcopal Church ended on June 28. She was also the piano accompanist and organized the Children's Choir of Angels.

### IN MEMORIAM

#### 1925

**Henry Kiel** died on May 22.

#### 1932

**Alberta (Schmitz) Kittleson** died on April 15.

**Ruth (Jacobson) Hunnicut** died on May 25.

#### 1933

**Ethel (Hagman) Anderson** died on Dec. 31.

#### 1934

**Kathryn (Kay Johnson) McClary** died on Feb. 6.

#### 1936

**Enid VanLeuven** died on May 26.

#### 1938

**Stener Kvinnsland** died on March 30.

#### 1940

**Robert Krueger** died in March.

#### 1942

**Delores Randolph '42, '46** died in December.

#### 1946

**Jeannette "Kookie" (Burzaff) Koch** died on April 27.

#### 1951

**John S. Rooney** died in December 1987.

#### 1952

**Philip Vorvick** died on Feb. 20.

#### 1953

**Robert Nistad** died on March 20.

**Sig Sorenson** died on March 21.

#### 1957

**Richard Nieman** died on March 20.

**Barbara (Skjnsby) Fosso** died on March 27.

#### 1958

**Ida Franklin** died on Feb. 3.

**Robert Sorenson** died on March 10.

#### 1960

**Gerald Erickson** died on May 23.

#### 1966

**Gerald Hansen** died on April 29.

**Craig Rettkowski** died on June 2.

#### 1978

**Virginia "Jimmie" Saffell** died on January 27.

#### 1989

**Lisa Armstrong Wilk** died on June 1.

#### 1994

**Peter Guertner** died on May 22.

### A L U M N I T R I P



Seventeen PLU-connected people (alumni, parents of alumni, and staff) were among a group of 39 who toured Italy in March and April, led by Ken Christopherson, professor emeritus of religion. The party included Ed Brannfors '64, Dan Christopherson '77, Ken and Polly Christopherson, Loleta Espeseth, Louise Faye, Barbara Frost '51, Ardy Hagen '71, Eva Hagen '59, Johanna Heussman, Carmen Knudtson, Donald '50 and Naomi '53 Nothstein, Jim Peterson, Janet Radford, Cora Svare '30 and Craig Svare '67. In a tour that ranged from Milan to Capri, the group's favorite sites included Michelangelo's restored Sistine Chapel paintings, St. Peter's Basilica and the Pompeii volcanic site. Ken Christopherson has led tours to 40 countries. A Reformation specialist, he will lead an Oberammergau tour in 2000, focusing on Lutherland and great sights in Europe. He also plans an African safari for 1999. Call 253-537-3328 for more information.



**Continuing the Dream** continued from page 13

president, came in to campaign for her dad. Walter captured the election, becoming the first Democrat since World War II to hold the seat representing the Santa Barbara area.

He brought his background in religion and academia to Congress, once telling the National Journal that he wanted to promote conciliation in the House and work toward a moral compass in his work. He was described by a local newspaper as "invoking an abstract view of God to encourage a return to community and human relationships."

"He was interested in civil discourse and thoughtful representation, not partisan politics," Lois said. "He talked about restoring the bond of trust that seems to have been replaced by cynicism and apathy."

Lois went with him to Washington, D.C. It would be their last few months together. In October 1997, Walter collapsed in Washington's Dulles International Airport and died as Lois performed CPR. The 63-year-old died of a heart attack.

"We ended our marriage just as we started, doing a lot of things together," she said. "People commented to me later that they could remember seeing us walking hand-in-hand around the Capitol."

Lois doesn't remember when, amongst the ensuing parade of mourners and memorial services, she first thought about replacing her husband in Congress.

"It was a process I went through, first feeling the overwhelming affection people had for him," she said. "It became clear to me that he had a special relationship with people in the district and that his job was not finished. And who knows his mind better than I?"

Besides the desire to complete her husband's term, Lois also started to realize that she had something to offer voters. Her 20

years as a nurse in public schools gave her front-line experience on "kitchen-table issues" such as education and health care. They were the core of her campaign when she ran for Walter's seat in a special election last January. She bested her conservative Republican opponent but failed to get the required 50-percent vote. When she finally was elected to Congress in a March run-off election, her victory was touted by the Democratic party as a precursor to future gains in the House.

Lois now lives in a D.C. apartment with her daughter while she navigates her first year in Congress and prepares to run for re-election in November. She has already finished her third election of the year, a June primary in which she ran unopposed for her party's nomination.

The 60-year-old sometimes finds it is her nurse's training that serves her best on Capitol Hill.

"In nursing you learn to be a good observer and a good listener, which is not a common thing in politics," she said. "You learn to withhold judgment and make a place of action and carry it through. I have had to be an advocate all my life, and that's what I am doing now."

Her faith is a source of strength as well. The daughter of a Norwegian Lutheran minister, Capps is thankful for her family's heritage.

"There is a sense you get having a strong religious father. You believe in the power of prayer and you know that this is what held people together for years," she said. "And you know that God works through ordinary folks."

*Kim Bradford '94 is a reporter for the Tri-City Herald in central Washington. She and her husband, Scott Johnson '94, live in Richland.*

## What's new with you?

NAME (last, first, maiden): \_\_\_\_\_ PLU CLASS YEAR(S): \_\_\_\_\_

SPOUSE: \_\_\_\_\_ SPOUSE'S PLU CLASS YR(S) IF APPLICABLE: \_\_\_\_\_

STREET ADDRESS: \_\_\_\_\_

CITY: \_\_\_\_\_ STATE: \_\_\_\_\_ ZIP: \_\_\_\_\_

HOME PHONE: \_\_\_\_\_ IS THIS A NEW ADDRESS?  YES  NO

EMAIL: \_\_\_\_\_ WEB SITE ADDRESS: \_\_\_\_\_

**JOB INFORMATION**

JOB TITLE: \_\_\_\_\_ EMPLOYER: \_\_\_\_\_

WORK ADDRESS: \_\_\_\_\_

CITY: \_\_\_\_\_ STATE: \_\_\_\_\_ ZIP: \_\_\_\_\_

WORK PHONE: \_\_\_\_\_ WORK EMAIL: \_\_\_\_\_

**MARRIAGE (no engagements, please)**

SPOUSE'S NAME (first, middle, maiden, last): \_\_\_\_\_

DATE/PLACE OF MARRIAGE: \_\_\_\_\_

SPOUSE'S OCCUPATION: \_\_\_\_\_

CHILD'S NAME (first, last): \_\_\_\_\_ GENDER:  MALE  FEMALE

BIRTH DATE: \_\_\_\_\_ SIBLINGS/AGES: \_\_\_\_\_

**PROMOTIONS/AWARDS**

NAME: \_\_\_\_\_

TITLE OF POSITION/COMPANY/AWARD/DATE ASSUMED: \_\_\_\_\_

**OTHER NEWS/COMMENTS (attach additional sheet if necessary)**

\_\_\_\_\_

\_\_\_\_\_

**Deadline for the next Pacific Lutheran Scene is Oct. 5**

Photos are welcome (preferably B&W) and will be used on a space-available basis. **MAIL TO:** Office of Alumni & Parent Relations, PLU, Tacoma, WA 98447-0003; **FAX TO:** 253-535-8555; or **EMAIL TO:** [alumni@PLU.edu](mailto:alumni@PLU.edu). Internet Form: [www.plu.edu/alumni](http://www.plu.edu/alumni)



# Cross country champ leads 1998 PLU Hall of Fame inductee class

BY NICK DAWSON, SPORTS EDITOR

**V**alerie Hilden Blum '88, a two-time national cross country champion, headlines a list of seven women and men who will be inducted into the 1998 Pacific Lutheran University Athletic Hall of Fame.

The induction luncheon starts at 11 a.m. Oct. 9 in Chris Knutzen Hall. Tickets are available through the PLU Athletic Department, 253-535-7352.

The inductees also will be honored prior to the kickoff of the Oct. 10 Homecoming football game against Eastern Oregon University at Sparks Stadium in Puyallup. Kickoff for that game is slated for 1:30 p.m. A plaque honoring this year's inductees will be installed at the Walk of Fame just north of the PLU swimming pool.



## SONYA BRANDT STEWART

*Women's Soccer, 1985-88*

Sonya Brandt Stewart, the most decorated player in PLU women's soccer history, helped lead the PLU program into national prominence in the late 1980s. Brandt Stewart earned NAIA first team All-America honors in each of her four seasons. She was named the most valuable player at the 1988 NAIA tournament in which PLU won the first of its three national championships.

Selected four times as the team's most outstanding offensive player, Brandt Stewart was a 1988 national tournament all-star and the 1988 ISAA National Player of the Year. She earned numerous all-conference, all-district and all-region awards.

Brandt Stewart still holds most of PLU women's soccer offensive records 10 years after finishing her career. Most of her records will likely never be broken. She holds records for goals in a season with 39, goals in a career with 127 and is tied for goals in a game with six. In addition, she holds the single-game assist record with four. On PLU's single-season top 10 lists, Brandt Stewart holds down the top four spots in both goals and points. Brandt Stewart was not only adept at putting the ball in the back of the net, she ranks fourth in career assists and tied for eighth in assists in a season.

This summer found Brandt Stewart still active in soccer: she was invited to play in the Nike World Masters Games in Portland, Ore. She recently moved with her family to Oregon, and after staying home with her daughter for a short period, she plans to return to work in human resources.



## VALERIE HILDEN BLUM

*Cross Country, Track and Field, 1985-88*

Valerie Hilden Blum, already a member of the NAIA Hall of Fame, won two NAIA national cross country championships while competing for Pacific Lutheran University. As a freshman, she garnered the 1985 NAIA cross country title, and then came back three years later to repeat the feat as a senior.

Her individual championship at the 1988 national meet was the cornerstone behind PLU's drive to the national team crown, the only one in the history of the PLU cross country program. A four-time first team All-American in cross country, Hilden Blum never placed lower than fourth at the NAIA national meet, finishing third in 1987 and fourth in 1986. She has the fastest time ever recorded by a PLU runner at the NAIA national meet (17:34).

Besides her success at the national level, Hilden Blum was a three-time conference cross country champion, winning consecutive titles from 1986 through 1988. She ranks third on the all-time PLU top 20 list for best times in any meet. On the track, Hilden Blum was a five-time All-American, including winning a national title in the 3000-meter run at the 1987 NAIA championship meet. She was the 1986 District I 3,000-meter champion.

Hilden Blum now lives in Oregon and works as a nurse in the Portland area.



## SCOTTY KESSLER

*Football, 1979-80*

In two seasons as a Lute, Scotty Kessler had a major impact on the PLU football program, including playing a key role in PLU's run to the 1980 NAIA Division II national championship. He earned NAIA first team All-America honors in 1980 after receiving second team All-America recognition after his junior campaign.

A co-captain and safety on the 1980 title team, Kessler was named the Defensive Player of the Game in PLU's 38-10 national championship victory over Wilmington College of Ohio. In the championship game alone, Kessler had 12 unassisted tackles, four assisted tackles, four pass deflections, and also set an NAIA playoff game record with four interceptions. In PLU's three playoff games, Kessler accumulated 25 unassisted tackles, nine assisted tackles, six pass deflections and eight interceptions.

In his two-year career, Kessler recorded 196 total tackles, 117 of which were unassisted, 11 pass deflections, 17 interceptions and one fumble recovery. In addition to receiving All-America honors for his participation on the field, Kessler earned NAIA All-America Scholar-Athlete accord.

He had a tryout with the Denver Broncos of the National Football League, and since has spent much of his time coaching, as well as in ministry with Christian colleges and football coaches.



## SARA OFFICER

*Women's Coach and Administrator, 1967-98*

Sara Officer retired in 1998 after three decades at PLU. As one of the first female coaches on staff, she was the catalyst for the university's modern-day women's athletic program, starting and coaching a range of teams: basketball, volleyball, field hockey, track and field, and tennis. In addition to her work on the court and field, Officer shared her craft in the classroom by instructing future generations of physical education teachers.

But she was not all sports and coaching. Service work was a natural for Officer, who had spent time with the Peace Corps in Sri Lanka before coming to PLU. For the past nine years, she led groups of J-Term students in community work with Associated Ministries in Tacoma's Hilltop neighborhood. In the mornings, students refurbished homes and provided other social services, returning to PLU for classroom study in the afternoons.

Although Officer is gone from PLU, she did not leave her service ethic behind. Her plans include volunteering with the Navajo people in Arizona, as well as continuing to work on the Hilltop.



## PHIL SCHOT

*Men's Track and Field, 1980-83*

Phil Schot earned first team All-America honors three separate years, including the 1983 season when he scored 7,542 points to win the NAIA national decathlon title. That winning point total, 15 years later, remains a PLU school record by more than 300 points. In addition, Schot is still ranked in the PLU career top 10 list in four separate events.

Schot, a three-time district decathlon champion and the district record holder in the event, was also the 1981 district champion in the 200-meter dash. He showed signs of national-level success with a sixth place finish in the decathlon at the 1980 national meet, then was fifth in the event a year later.

Schot is now an associate professor and director of the bio-mechanics lab in the department of human kinetics at the University of Wisconsin-Milwaukee.



## RANDY SHIPLEY

*Track and Field, 1970-73*

Almost 25 years after finishing his collegiate career, Randy Shipley still holds the PLU men's shot put record with a throw of 58'3 1/2". His conference shot put record of 56'11 1/2", set in 1973, still stands. Also in 1973, Shipley placed second in the national indoor meet and fifth in the outdoor competition and was named the outstanding performer on the PLU track and field team.

Besides earning four letters in track and field, Shipley was an outstanding football player at PLU, earning three letters. As a senior, Shipley was named All-Conference, Little All-Northwest and Little All-American honorable mention by Associated Press.

He signed a contract with the Washington Redskins of the National Football League and eventually played two years in the World Football League.



## SCOTT WESTERING

*Football, 1978-80*

Scott Westering was a co-captain and first team All-American tight end on PLU's 1980 national championship football squad, the first team in school history to win a national title. In an era when PLU football was better known for a bruising ground attack, Westering led the 1980 Lutes in receiving with 49 catches for 615 yards and nine touchdowns. He had a single-game best of eight receptions for 123 yards.

It was as much his crunching blocks on the line, helping open holes for the Lute running backs, as it was his receiving that brought recognition to Westering. He finished his three-year PLU career with 106 receptions for 1,349 yards, an average of 12.7 yards per catch, and 18 touchdowns.

He later had tryouts with the San Francisco 49ers and the Buffalo Bills of the National Football League. Upon graduation, Westering joined his father, head coach Frosty Westering, on the PLU football coaching staff. He has served as the team's offensive coordinator since 1984.



Want to know the latest on Lute sports? Call the PLU Athletic Hotline at 253-535-PLU1 (7581).

## PLU maintains firm grasp on NCIC All-Sports Award

Pacific Lutheran University won the 1997-98 McElroy-Lewis All-Sports Trophy, symbolic of the outstanding athletic program among Northwest Conference of Independent Colleges institutions. PLU has won top honors 12 times in the award's 13-year history. The Lute athletic program scored 304 points in an easy defeat of runner-up Puget Sound, which had 263. Willamette finished third with 255. PLU won the McElroy-Lewis Award each year from 1986 through 1993 before Willamette ended the streak in 1994. PLU regained the trophy in 1995 and has won it each year since.

PLU continued a recent dominance in spring sports by winning conference titles in men's (second straight) and women's (second straight) track and field, men's golf (fifth straight), and men's tennis (seventh straight). Other PLU teams winning NCIC team titles were men's cross country and women's basketball, giving PLU six team championships, the most of any school in the conference.

The conference champion in each sport receives 20 points, with the runner-up getting 18 and the third-place squad getting 16. Each succeeding school in descending order gets two fewer points than the previous school.

### MCELROY-LEWIS ALL-SPORTS AWARD

School	Point Total
Pacific Lutheran	304
Puget Sound	263
Willamette	255
Linfield	235
Whitworth	187
George Fox	172
Lewis & Clark	127
Pacific	120
Whitman	120
Seattle	119



# arts events calendar

## SEPTEMBER

**20**  
SUN | **Chadwick & Lewis Piano Duo**  
3pm

## OCTOBER

**7**  
WED | **Regency Concert Series**  
Camas Wind Quintet, 8pm

**8**  
THUR | **Fukushima Jazz Trio**  
8pm

**9-11** | **Homecoming**

**10**  
SAT | **University Wind Ensemble**  
with James Holloway, organist, 8pm

**13**  
TUE | **Gottfried and Mary Fuchs Organ Series**  
Bruce Neswick, organ, 8pm. Tickets are \$15 general, \$10 students/senior; no passes.

**14-15** | **Fall Choral Concerts**  
8pm

**16**  
FRI | **University Jazz Ensemble and Park Avenue Vocal Jazz** 8pm

**18**  
SUN | **Concert of Early and Baroque Music**  
3pm

**20**  
TUE | **Masterpiece Series Program I**  
University Symphony Orchestra with Don Immel, trombone, 8pm

**21**  
WED | **Artist Series**  
Camerata Vocale Hannover German Choir, 8pm

**30-31** | **Great Moments in Opera**  
Opera Workshop, 8pm, Eastvold Auditorium.

**OCT 30**  
THUR  
**NOV 1**  
FRI | **Family Weekend**  
Mark your calendars now for PLU's Family Weekend! With a variety of activities planned, there's sure to be something for everyone. Enjoy opportunities to meet President Loren J. Anderson, faculty and staff; participate in family activities such as a game and movie night; attend classes at Family University and worship with University Congregation; as well as enjoy the highlight of the weekend — a Halloween Dinner Theatre. Call 253-535-7415 to make your reservation.

## NOVEMBER

**3**  
TUE | **Songs of Praise**  
Choral Union, 8pm. No passes.

**6-8** | **Gottfried and Mary Fuchs Organ Dedication**

**7**  
SAT | **Annual Church Youth Day**

**17**  
TUE | **Regency Concert Series**  
Mixed Ensembles, 8pm

**18**  
WED | **Artist Series**  
Marta Kirk, violin; Ned Charles Kirk, piano, 8pm

**20**  
FRI | **University Jazz Ensemble and Jazz Lab**  
8pm

**22**  
SUN | **Remembrances: University Wind Ensemble and Concert Band**

**Violin Kaleidoscope**  
Complimentary, 8pm

**23**  
MON | **Park Avenue Vocal Jazz**  
8pm, Chris Knutzen Hall, University Center

## DECEMBER

**8**  
TUE | **Masterpiece Series Program II**  
University Symphony Orchestra, 8pm

**9**  
WED | **Composers Forum**  
Complimentary, 8pm

### CHRISTMAS EVENTS

*Saturday, November 21*  
**Yule Boutique**  
9am-5pm, Olson Auditorium

*Saturday, December 5*  
**Santka Lucia**  
7pm, performance and reception

*Wednesday, December 9*  
**Norwegian Christmas Service**  
6pm, Scandinavian Cultural Center

*Thursday, December 10*  
**The Sounds of Christmas**  
University Singers and University Men's Chorus, 8pm

**Christmas Festival Celebration Concerts**  
*Friday, December 4*  
8pm, New Hope Community Church, Portland  
*Saturday, December 5 and Sunday, December 6*  
4pm, Eastvold Auditorium

*Friday, December 11*  
8pm, Eastvold Auditorium

*Sunday, December 13*  
4pm, First Presbyterian Church, Seattle

Tickets for the Christmas Festival Celebration concerts are \$10 general, \$5 students/seniors; no passes.

Events are subject to change; please call ahead to confirm. For concert information, call the 24-hour concert line, 535-7621, or the PLU Music Office during regular business hours, 535-7602. (All area codes are 253 unless otherwise noted.) Ticket prices for music events (unless otherwise noted) are \$8 general, \$5 students/seniors, \$3 alumni, and free for 18 and under. Season passes are available. Music events, unless otherwise noted, are held in the Mary Baker Russell Music Center.



CHRIS TUMBUSCH

### PLU On the Road

*October 2-4*  
**Portland, Oregon**  
SPLASH! Workshop, Rev. Rick Rouse

*October 4*  
**Spanaway, Washington**  
Bethany Lutheran Church, 8am and 10:15am services  
President Anderson, guest preacher

*November 1*  
**Edgewood, Washington**  
Mountain View Lutheran Church, 8:15am and 10:30am services; President Anderson, guest preacher

### Art Exhibits

#### SCANDINAVIAN CULTURAL CENTER

*September 22-November 17*  
**Norwegian Rosemaling Exhibit**

*November 17-January 6*  
**Christmas in Scandinavia Exhibit**

#### UNIVERSITY GALLERY

*September 15-October 21*  
**Sculptor Tom Torrens**

*October 27-December 2*  
**Contemporary Landscape**  
Becky Frehse and other artists featured

*December 8-16*  
**Winter Senior Exhibit**

The Scandinavian Cultural Center is located on the first floor of the University Center. Regular hours are Sun. 1-4pm and Tue., Wed. 11am-3pm. Admission is free. Call 535-7532.

The University Gallery is located in Ingram Hall. Regular hours are Mon.-Fri., 8:30am-4:30pm. Admission is free. Call 535-7573.

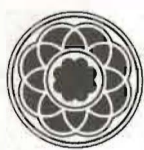
### University Theatre

**Rumors**  
October 16, 17, 23, 24 at 8pm  
October 25 at 2pm

**Shadowlands**  
November 19, 20, 21 at 8pm  
November 22 at 2pm

University Theatre performances held in Eastvold Auditorium. Tickets are \$7 general, \$4 students/seniors and with PLU ID. No music season passes accepted. Call 535-7762.

**NOTE: Not all events were scheduled at press time, so please continue to check out our website at [www.plu.edu/~events](http://www.plu.edu/~events) for updated event information!**



PACIFIC  
LUTHERAN  
UNIVERSITY  
Tacoma, WA 98447-0003

If this copy of *Pacific Lutheran Scene* is addressed to your son or daughter who no longer maintains a permanent address at your home, please notify the Office of Alumni and Parent Relations with his or her new mailing address. You can reach us by phone at 253-535-7415, fax us at 253-535-8555 or send e-mail to [alumni@plu.edu](mailto:alumni@plu.edu) with the new information. Thanks!