

The Mooring Mast

Senior Musical
8:00 p.m., SUB

VOL. 27

PACIFIC LUTHERAN COLLEGE, FRIDAY, NOVEMBER 4, 1949

NO. 7

"Stagehand's Dream" in SUB; Comedy, Entertainment Galore

Tonight's the night! The time for the long awaited senior production has arrived. Under the direction of Duane Fods the Senior class is presenting its new musical revue, "Stagehand's Dream," on the stage of the Student Union Building tonight at 8.

With Phil Falk as the master of ceremonies, the unveiling of "Stagehand's Dream" promises to be a gala event featuring such stellar performers as Morrie Hendrickson, Bea Konop, Jean Hesa, Bill Saas, Glenna Nelson and Jim Williamson. In addition, several new combination acts will be in evidence, but to be more specific you can look for top-notch performers from Mahlon Read and Doris Johnson, Dick Svare and Kathy Reule, the Operatic Quartet, and Duane Fods with his 1950 edition of the Hungry Six. Sandwiched between a couple of musical numbers in a prominent spot will be Morrie Hendrickson (Eyes Hendrickson, that is) with a demonstration in hypnotism.

Program to Be Varied

The music has been designed to suit everyone's tastes, whether the individual penchant is for operatic or popular renditions. The newly-formed Operatic Quartet will make its debut appearance, while the next act may find "Carmen Miranda" Konop taking a fast chorus and at the same

time balancing on her elevator shoes. It is believed that a happy medium will be maintained throughout the evening, however.

Remember—SUB Auditorium at 8 tonight. The admission price is 35 cents and refreshments will be served. Don't miss the revue of the season.

Community Chest Drive Falls Short

A total of \$174.71 was contributed by the students in the Community Chest drive which started here October 18.

The Community Chest drive this year was handled through the Inter-club Council with Larry Hauge, Gene Ahrendt, Ed Dorothy and Bob Crumbaugh taking charge. Rivalry between the clubs was stressed until it was realized this would not reach all the students. On the thermometer chart the clubs made a good showing but there was too much overlapping of different clubs. During the last two days more than sixty per cent of the students were reached by going to the religion, philosophy and education classes.

Del Zier, president of the Associated Student Body, expressed a disappointment that there was not a large enough percentage taking part, not in those who gave.

A special thanks is extended to those who did participate and sacrifice.

All suggestions for making future drives enjoyable and successful are welcome.

Campus Radio Is Organized

The Speech Department this week exposed another facet in its extensive list of activities with the announcement of the formation of a Campus Radio Section.

To begin with, Campus Radio is not a social organization as such. Its one and only function is to produce shows that will commensurate with the established tradition of this school. To quote the leading stooge: "Sweat we expect. Blood? That's optional. Tears? Well, you brought it upon yourself."

It is the purpose of the Radio Section to hold itself open to all individuals, groups, and organizations on the campus, for the production of shows that will reflect credit upon PLC.

Two dates have been committed for Campus Radio Theater. A play has been scheduled for a late November date and the Choir of the West for a pre-Christmas release. We understand that the Religious Clubs on the campus are working on a production and have been tentatively scheduled for a January date. Campus Radio Theater is sponsored by Tacoma City Light and Station KMO airs the show. PLC has an average of one date a month to fill on Campus Radio Theater alone.

CRT is not, by any means, the limit of our air time. Two other stations in Tacoma have granted non-scheduled time to the school. Both KTBI and KTNT (FM) have indicated that they would be glad to air any show that is of lease caliber.

Morrie Hendrickson stated that actually the only limitation that confronts the group is one of talent and ideas. He asked that anyone on the campus who would like to have their voice recorded to please watch the B.B. in the main hall for an announcement as to when recordings are being made.

Try-outs for the November show are being held this week and a file of voices is being established, for the purpose of helping to pick future shows.

Surprises, Football Stored for Goblins

Lutherland will be the roost of ghouls and goblins tonight for the LSA annual Halloween party. One of the big bubbles in the boiling cauldron of events brewed by Les McKay and Lowell Knutsen is the football game; outstanding players of the game to be selected to play against the LSA team of Oregon State College at the LSA retreat to be held at Lutherwood on Lake Samish, November 11.

Plans are being made for various other activities to take place at the party. The social program for the evening is being planned by Edna Haglund, Marcia Etzel and Dolores Langseth. Surprises are promised throughout the afternoon and evening and to close the day's activities, a bonfire will be held.

The group attending the affair will leave for Lake Killarney at 3 p.m.

Ice Skating Fri. Night

An ice skating party, sponsored by the Roller Blades Club, is slated for November 11 at Lakewood. Buses will leave directly after the school play Friday night. Phil Vorvick is chairman of the committee to make arrangements for the party.

The club meets on Wednesdays at 6:30 in L-117. The newly-elected president is Duane Ulelland, and Mr. Larson was elected adviser for the club.

Intramural Program Planned This Year

Will Eliminate "Buddy" System; Ten Clubs Are Planned to Take Part in Competition

The 600-plus men on the campus will be presented with a reorganized and greatly extended intramural athletic program in the very near future, according to an announcement by a reorganization committee that is composed of Jack Ostrander, Sam Hewston, Ed Korsbom and Dick Colburn.

The committee, acting in conjunction with its general supervisors, the Messrs. Tommervik and Harshman, feel that the new program will eliminate many of the objections to the past programs and provide an opportunity for all men on the campus to participate in the sport or sports of their choice. They emphasized that participation in the new intramural program will give the students a chance to have a better recommendation from their physical education directors upon graduation from the school, because such participation would bring the athletic ability of each student under better observation of the directors.

Shutterbugs Elect Ytreede As Head

Camera Club officers elected to serve for the coming year are: President, Roland Ytreede; vice-president, Arnold Gregerson; secretary-treasurer, Lee Bishop; Inter-club Council representative, Steve Kennedy. They were nominated to their offices at the October 18 meeting.

The club had its first outing of the year on October 15, when they visited the site of the new Narrows bridge. Designs were photographed of the machinery and supporting cables, and many interesting pictures are expected to emerge from the field trip.

The committee pointed out that "It is not our intention to criticize, or take credit away, any previous teams for their past accomplishments, but it is imperative to the future success of an intramural program that a fairer and better method of selecting teams be introduced.

"As an example of why a change should be made from the 'buddy system' of selecting teams it may be pointed out that the alumni of Lincoln High School could get together and dominate the entire intramural program by sheer force of numbers alone.

"Many colleges who are more formally organized than we are—such as WSC, Central, Eastern—have fine intramural programs through their method of organization, but PLC's clubs and organizations are so varied in nature and purpose that it would be extremely difficult to select teams from them.

"We ask all of the men on the campus, whether they have formerly
(Continued on Page Two)

All-School Cast Announced; Dick Svare Student Director

The cast for the first all-college play of the 1949 fall season was recently announced by the Speech Department. "Stage Door," a play about the legitimate theater in New York City, has been selected as the first

and Bob Brass, who is business manager.

Joyce Taylor portrays the feminine lead, Terry Randall, a young actress having a tough time working her way up on the New York stage. Stan Elbertson takes a male lead in his portrayal of Keith Burgess, a young idealistic playwright. The third lead of the show is Morrie Hendrickson in the role of David Kingsley, a Hollywood producer. Phil Falk portrays Mr. Gretzel, another Hollywood producer, but definitely of a different breed. The remainder of the cast features Glen Clark as Dr. Randall, Robert Ericson as Mr. Milhauser, Don Graham as Powell, Phil Thorliefson as Sam Hastings, Marguerite Eastwood as Jean Maitland, Jo Ann Nelson as Judith, Mary Ann Wick as Madeline, Roberta Schoessler as Mrs. Orcott, Myla Lund as Bobby, Olive Knudsen as Kay Hamilton, Natalie Lund as Olga, Harriet Olsen as Big Mary, Lee Bishop as Little Mary, Helen Jensen as Bernice, Margaret Kutz as Mattie, LaWanna Wellsandt as

Stanford Debate Squad Selected

Announcement of the debate traveling squad for the Western Speech Association tournament at Stanford University was made Wednesday evening by Professor Karl of the speech department. He also announced the itinerary for the trip.

Representing PLC in the varsity division will be Lou Inmerarity and Donald Graham. Junior varsity entrants will be Lillian Leikauf, Jon Ericson, Bill Reike, Joyce Taylor and Mary Larson.

The squad will be accompanied by Mr. Karl, and Mrs. Schaffer who is assistant professor of speech and drama at the college. Leaving at 5:30 a.m. on Saturday, November 19, the squad will arrive at Stanford on the evening of the 20th, and will enter the first rounds of competition on the morning of the 21st. The tournament will continue through Wednesday the 23rd.

At the close of the tournament at Stanford the PLC group will journey further south to San Jose, California, where they will attend a three-day convention of the WSA. Prof. Karl has accepted an invitation to speak at the convention, and he will address the conclave on the subject of "The Educational Theater in the College and University." The debate squad will return to PLC on the evening of the 28th of November.



Mrs. Schaffer

production. It is a character study showing that the things we really believe in are worth fighting for and far more precious than the artificial values that come and go. Mrs. Pauline Schaffer and Miss Jean MacGregor, both of the Speech Department of Pacific Lutheran College, will be the director and assistant director, respectively.

Dick Svare, a member of Alpha Psi Omega, will hold the enviable position of student director of "Stage Door." Few college students achieve the skill to be a student director of an all-college production. This is the highest dramatic honor the college can offer. Dick is a senior at Pacific Lutheran and has been active in drama work throughout his college career, having appeared in productions such as, "You Can't Take It With You," "Twelfth Night" and "The Night of January 16th." Dick was also student director of "One Foot in Heaven." The other two top spots in the production are filled by Howard Shull, who is also a member of Alpha Psi Omega and will be the stage manager



Dick Svare

Louise, Barbara Jonson as Kendall Adams, Paul Templin as Frank, Leon Peerboon as Larry Westset, and Bob Christenson as Billy.

Meet Strandness; Council's Veep

Ladies and gentlemen, greetings—meet your student body vice-president, Gene Strandness. We know that you know Gene as a pigskin tot, but—did you know that he has other interests as well?

Gene is a twenty-one year old senior at PLC. He hails from Olympia and was graduated from that high school. He has a B.A. and is especially interested in the medical profession.

The versatile Mr. Strandness has thus far received three scholastic scholarships. He has held numerous organizational offices during his college career. He has been secretary of the Physical-Science Club and president of the Letterman's Club. At the present time he is vice-president of the Student Body and is active in the following organizations: Letterman's Club, Tawasi, Inter-club Council and a member of the senior class.

Gene is well known for his athletic prowess, especially on the gridiron, and is also an active booster and participant in intra-mural sports. He works part-time as a lab assistant in human anatomy. When asked about his hopes and aspirations Gene replied that he hoped to some day become a doctor.

Gene concluded the interview with these remarks, "I want to see the Inter-club Council be a big success on the campus, and with the all out cooperation of the students it can be just that." "Beat CPS."

Chapel Schedule

Monday—Professor G. J. Malmrin
Tuesday—Student Day
Wednesday—Rev. C. L. Johnson
Thursday—Rev. Roy Olson
Friday—Dr. E. C. Knorr

The Mooring Mast

Published every Friday during the school year by students of Pacific Lutheran College
 Entered as second class matter, October 2, 1925, at the Post Office at Parkland, Washington.
 Office: Student Union Telephone: GRanite 8611
 Subscription price—\$1.50 per year

Printed on the Campus by La Crosse Printing Company

EDITOR.....LOU INNERARITY
 ASSISTANT EDITOR.....MARLENE SCHWENKE
 BUSINESS MANAGER.....PHIL FALK
 Editorial Staff.....Sports, Bob "Stretch" Ferguson; Religion, Alan Hatlen; Speech and Language Arts, Harriet Olsen; Society, Blanche Kilmer and Lillian Leikauf; Drama and Music, Carol Schuler; Pictorial, Edna McCall.
 Composing Staff.....Verne Brauvelt, manager
 Special Writers.....Glenn Clark, Norman Hawkins
 Reporters.....Don Breima, Glenn Nelson, Bill Morgan, Don Gannon, Beverly Allen, Luther Kroenke, Helen Enger, Barbara Johnson, Stan Kvern, Frances Biery, Jon Ericson, Don Graham, Paul Tomplin.
 Business Staff—
 Advertising.....Jo Ann Nelson, Bob Gregerson, Dorothy Broomfield
 Circulation.....Marion Cummings and Jo Friday

Battle of the Bulges

Many of the men at PLC have found to their dismay that they can, and already have developed a waistline that is disproportionate to the remainder of their physical configuration. This can happen during the tender ages between 18 and 30 even if every single one of us do lead clean, wholesome lives that are not complicated by any excesses or dissipation.

There is hope for those of us who are not outstanding enough in athletic ability to play in the major sports, however. The committee working on the reorganization of intramural sports (See sports page) has opened the initial offensive against the protruding abdomens by offering a program where all men on the campus can take part in the intramural sports programs without having to be too skillful at any one sport.

This affords a fine opportunity for would-be athletes like yours truly, and for others of a greater ability, to be active in the sports program for the exercise and the fun of it. It is naturally expected that a few teams will show themselves to be outstanding in relation to the others, but at least all of the men will have an equal opportunity to use the Memorial gym. The times will be scheduled during which each team will practice and play, thereby eliminating the difficulty of having a few teams dominate the gym facilities for the largest part of the afternoons and evenings.

None of us may turn into all-stars by reason of our participation, but we can get some of that exercise that so many of us claim we need. At the same time that we are conditioning ourselves physically, we can benefit from the programs by participating with, and in sports competition against, our friends and acquaintances on the campus.

If enough of the rougher sex are interested in the program should work out to the best advantage of all concerned, and the intramural sports program will be serving a worthy, and school-wide, purpose.—L.A.I.

Notice to Veterans

The Accounts of Veterans for books and supplies at the College Bookstore will be sent to the Veterans Administration on Nov. 12, 1949.

Veterans, estimate your needs for books and supplies for the remainder of the first semester and purchase them before Nov. 12, 1949.

Chapel Quotes

"All institutions within the Christian Church must show forth the love of Christ."—Mr. Sware.

"Of greater danger than the A-bomb to America today, is the breakup of American family life."—Mr. Steele.

"The strength of the UN lies in the development of a strong will among the people of the member nations to use the international machinery that has been set up."—Mr. Ronning.

"What a thrill to know that of all the millions of people who are followers of Christ... every one is a volunteer; we are free to go away if we choose."—Dr. Pfleger.

"Being fair in all our dealings, with God and with our fellowmen, is the thing that develops character and firmness in our Christian life."—Dr. Aasgaard.

"The landmark of the church to which you and I belong is still the saving word of God."—Dr. Malfrin.

"The entire work of the Christian Church is the work of reclamation. It is expensive and hard, but it is also valuable."—Dr. Eastvold

"It makes a tremendous difference which religion you believe in and what kind of a God you worship."—Mr. Ramstad.

Band to Give Concert Soon

The College Band, under the direction of Harlem Moen, will present a concert Wednesday evening, November 16, in the Student Union building, at 8 p.m. Appearing in this concert will be a trumpet trio, consisting of Joyce Ferguson, Beth Scholer, and Bob Winters. Other features will include a baritone horn solo with Don Reed appearing as soloist with band accompaniment, and a trumpet solo, The Carnival of Venice, with Bob Winters in the solo role. Other selections by the band will include an overture, lighter selections from musical comedies, excerpts from symphonies, and other well known compositions. The full program will be published in a later issue of the Mooring Mast.

Confirmation Service Scheduled for Dec.

The college confirmation class is being held every Tuesday evening at the home of Reverend Kelmer Roe. Thirteen students are enrolled for instruction. The confirmation service is being planned for December 11.

Members of the class are: Mary Arnold, Richard Berg, Sue Carpy, Ellen Davis, Ed Dorothy, Henry Hazel, Anita Hellbaum, Arnold Kjesbo, Gene Lundgaard, Frederick Rapp, Ivan Shaffer, Richard Weathermon and Donald Williams.

Arthur Arp Heads El Club de Espanol

The outcome of the election of the Spanish Club officers resulted as follows: President, Arthur Arp; vice-president, Phil Vorvick; secretary-treasurer, Jo Ann Nordvick; Inter-club Council representative, Julius Enboer.

The program of October 24 consisted of several piano selections, by Dr. Raun, the club adviser, and three readings, "The Weeping"—Marsine Anderson, "Fede-fico Garcia Lora"—Mary Arnold and "El Cafe"—Arthur Arp.

ALUMNI RECEIVES DEGREE

Peter N. Holm, (A. B. 1946) received an advanced degree from Harvard University at Commencement exercises on June 23, 1949. He now holds the A. B. from Pacific Lutheran College and a Master in Business Administration from Harvard.

BLUE RUSTIC
 UNDER NEW MANAGEMENT
 We feature home-cooked meals and home-made Pies and Donuts

Raymond Electric Company
 Engineers - Contractors
 813 Pacific Ave. BR. 1712

PARKLAND BARBER SHOP
 MARSH and KNUDTSON

PARKLAND MEN'S SHOP
 DON STRANDEMO
 Garfield Street Parkland

DANIELS HARDWARE
 ★
 ON THE HIGHWAY CORNER
 PACIFIC AVE. & GARFIELD

Intramural Program Planned This Year

(Continued from Page One)

taken part in intramural activities or not, to consider the plan of selection that is being set up in the light of its benefit to the male students as a whole. It consists of ten athletic clubs whose selection embodies the most important phase of planning the new program. It is essential that the rosters of the ten clubs compare favorably in ability and number, and therefore, the classes have been divided and pared according to ability and number by the committee. The freshman class is the unknown factor because their ability has not been demonstrated here except by a few individuals who are now participating in, or turning out for, major sports.

"The ten clubs will be given names such as Tigers, Beavers, etc., and in future years the record will clearly show the athletic progress of these clubs. The clubs, with their titles, will be permanent, and each club will divide itself into as many teams as it so desires. These teams will not be preferred in league play over another team from the same club except by demonstrated ability of a superior nature. For that reason, the clubs will be asked to number their teams instead of the usual lettering process that is commonly construed to mean that an "A" team is superior to a "B" team and so on.

"Another major part of the plan is for each club to elect a panel of officers to direct the club, and to elect a representative to a Sports Council that will oversee and govern early a date as possible.

"No attempt is made to limit the number of sports in which any one individual may engage, but in fact each man is encouraged to participate in at least more than one. The entire purpose of the plan is to extend the

area of participation to as many men as possible, and to encourage as much participation as possible on the part of each man.

"The winning clubs in the various leagues of the several different events, such as football, basketball, volleyball, softball, etc., will be awarded the entire intramural program. This Sports Council will establish and interpret the rules for the program, and will provide referees and perform other related duties. Until the Sports Council has been established, the reorganization committee will serve in its capacity so that the reorganization program may be effected as far as possible as tokens of their progress. The outstanding clubs will be honored in a like manner if they have amassed a sufficient number of points by winning contests. This trophy or plaque is to be displayed in the trophy case in the SUB auditorium."

The fact that similar programs have met with success in other colleges indicates that with the enthusiasm and participation of a larger portion of our male students this program knows no limitations as to growth and addition of activities. Swimming meets at Spanaway Park are a distinct possibility, and many other activities can be arranged as they come into demand.

The committee stated that this same type of program is now operating with smooth efficiency at St. Olaf College, and that with the co-operation of the male students it can and will operate as well here at PLC. A list of the ten clubs, and possibly a list of the members of each club will appear in an early issue of the Mooring Mast.

YOU'LL LIKE
JIM'S BARBER SHOP
 Airport and Pacific

WEDDINGS - CORSAGES
 FUNERALS
Stella's Flowers
 Artistry in Flowers
 Parkland Center GR. 7863

The CLEAN Place to Buy and Store Your Meat at Lower Prices...

PARKLAND LOCKERS
 A. J. (Slim) STERN
 11012 Pacific Ave. GR. 7111

C. O. Lynn Co.
 MORTUARY
 717 TACOMA AVE. Phone MAIN 7745

Centre Cleaners
 FOR ALL CLEANING NEEDS
 Parkland Centre Building
 One block from Campus
 Carl and Ingrid Fynboe, props.

Clover Creek Market & Lockers
 GROCERIES - MEATS
 Brookdale GR. 8013

PARKLAND AUTO PARTS
 IN CONNECTION WITH
Parkland Fuel Oil & Service Station
 Granite 8112 Parkland, Wash.

SEE OUR SCHOOL TOGS
 For Men and Women!

EST. 1884
Washington Hardware Co. SPORTS SHOP
 918 - 24 PACIFIC - 922 COMMERCE

Parkland XXX
 Featuring the...
Merchants Lunch, 50c
 STUDENT MEAL TICKET
 A \$5.50 Value for \$5.00
 Two Blocks North on Mt. Highway



Gladiators Scuttle Pirates, 26 to 21

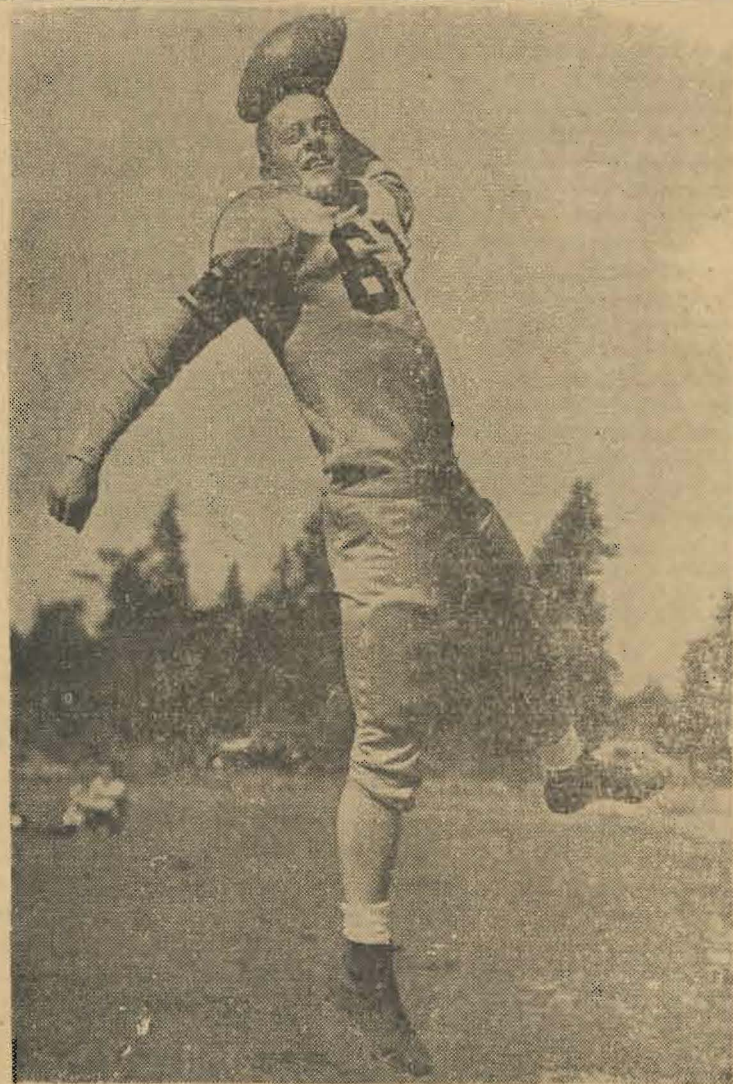
Last week the Lutes won a thrilling homecoming game from Whitworth by a score of 26-21. The score indicates how close the game was and how wide open also. The defense of both teams was poor and as a result both teams were running all over the field.

The Pirates started off with a bang and before the first quarter was nine minutes old they had 14 points, and it didn't look too rosy for the Lutes. In the second quarter the Glads rolled and moved the ball to the vicinity of the Pirate 15-yard line, and on a surprise play, Guyot passed to End Vern Morris in the end zone for our first touchdown. The half ended with the score 14-6 in favor of the Pirates.

After the half-time ceremonies the Lutes rolled to their second touchdown on good running plays, and on a Knutson to Morris pass the second touchdown was scored. A pass in the fourth quarter was good for a touchdown but was called back because of a holding penalty against the Lutes. Then a little later after an intercepted pass by McKanna, Jurkovich plunged over for the third Glad touchdown, and the try-for-point was good. The Pirates were behind and time was running out, and being desperate for a touchdown they tried a pass on fourth down which was incomplete. A few running plays and then a jump pass from Jurkovich to Amundson was good for the Lutes' final touchdown and the try-for-point was good, so the score stood at 26-14 with a little over a minute to go in the game. On the kickoff, Tucker went clear up to the Lute 48-yard line, and after

a couple of passes, the Pirates scored their third touchdown, and made the try-for-point. They tried the inside kick but we recovered the ball and after one play the game was over.

An exciting game, and a fitting climax to one of the best Homecomings in a long time for PLC.



Portside Passer—Stellar right halfback of Pacific Lutheran's Gladiators is Lowell Knutson, 170-pound junior from Seattle. Lowell is the only three sport letterman in recent P. L. C. history, winning awards last year in football, basketball and baseball. He came to P. L. C. from Queen Anne high in Seattle and during the summer of 1947, captained the Seattle eleven in the first annual State vs. Seattle all-star grid game. Knutson is an excellent southpaw passer.

Finkle Drops School

Bill Finkle, sophomore from Portland, Oregon, is leaving school for the rest of the semester at the doctor's orders. Bill is suffering from fluid in the plural cavity and has been in the infirmary for the past three weeks.

He was elected yell duke last spring and being that he is planning on coming back next semester, no one will be picked to take his place. We are sorry to see him go and we wish him a speedy recovery and hope to see him in a couple of months.

Harshman Works Hoopmen at Nite

Coach Marv Harshman has announced a call for all hopeful basketball stars to start turning out every Tuesday, Wednesday, and Thursday in the evening from 7 to 9 p.m., and on Friday afternoons. This will last



Marv Harshman

for the rest of the football season and then afternoon turnouts will be the order of the day.

Already 40 some players are turning out, and if there are any more that would like to make the team, it is a good idea to start turning out now so you can get in shape by the time regular afternoon drudgery begins, which will be the first Monday after Thanksgiving.

The first game will be November 28, when a strong Portland University visits Memorial Gymnasium. It will mark the first time that the new glass backboards will be used for a game. These backboards were installed last week. Some of the players have remarked that they are as good, if not better, than the wooden ones and they have not found any difficulty in playing against them.

CEREMONIES IMPRESSIVE

Ceremonies at the Homecoming game were impressive, and enjoyed by the spectators. Homecoming this year was run off in wonderful weather, and to the relief of the senior class, it being the first time they didn't have to wear rain coats and rubber boots.

Orchids to everybody that was responsible for putting across homecoming this year. They deserve a hand of applause for their job which was well done.

"Time Out"

By "Stretch" Ferguson

Local sports fans were treated to a fast and snappy game last Saturday afternoon when the Bustles and the Girdles battled back of Old Main. In the first quarter the Bustles scored on a Hagen to Soper pass good for 30-some yards. The second quarter was fought on even terms and the half ended with the score still 6-0 in favor of the Bruising Bustles.

A spirited pep talk by Coach Jim Kerns and Milt Hefty during the half-time intermission, and the Girdles came roaring out for the second half ready to do battle. But the talk was not snappy enough and the Girdles drive folded in Bustle territory.

In the fourth quarter the Bustles countered again when Dorothy Hagen intercepted one of Carol Schuler's passes and ran it back 25 yards for the touchdown. It looked like doom for the Girdles with two touchdowns behind and the game almost over. But the officials were feeling sorry for the girls so they pitched in and helped them to one touchdown. A Karl to Ramstad pass was good for over 50 yards and the Girdles had a touchdown to their credit.

The game ended in turmoil as the officials were doused with water by the winning team, but it was agreed that a happy time was had by all and it is hoped that another game can be played next year.

Professor Ramstad, Mr. Karl, and Mr. Larson were the officials, and Walt Kunschak handled the P. A. system.

Crystal Ball

By Lou Innerarity

The prognostication average has risen to 500 on a basis of seven right and seven wrong predictions during the current football season. The Lutes helped the "correct side" of the ledger by trouncing Whitworth last Saturday, but since these worthy lads are not scheduled to play anyone this weekend, we will focus the crystal ball on the other conference teams and see what happens.

It appears that Western's Vikings are slated for a win over the Central Wildcats. The backfield and line work of Western will turn the trick if they play up to their usual par.

The CPS-Whitworth tussle is a dilly to tab, but let's put it down as a wild one with scoring on both sides and with the Pirates coming out on top.

Eastern, slated to go against Montana State U., is due for a drubbing at the hands of same. We think that this is it.

In another non-conference struggle it looks like a possible UBC victory over North Idaho College, but we had better tab it the other way. It would be nice to see UBC win a game for a change, but it probably won't be against N. Idaho.

Patronize Your Advertisers

Winthrop Men's Shop
784 Broadway MA. 6635

EVERGREEN CONFERENCE STANDINGS

	W	L	T
Eastern Wash.	4	1	0
Western Wash.	2	1	1
Puget Sound	2	1	0
Pacific Lutheran	2	2	1
Central Wash.	2	2	0
Whitworth	2	3	0
St. Martin's	0	4	0

Games This Week

Central Washington vs. Western Washington, 2 p.m. Saturday, at Bellingham.

College of Puget Sound vs. Whitworth, 1:30 p.m. Saturday, at Spokane.

Eastern Washington vs. Montana State, 2 p.m. Saturday, at Missoula. (Non-conference).

After Eastern's handy 20-0 spanking of Central Saturday, it looks like the Savages are on top of the Evergreen Conference for keeps.

The Cheneyites have only to win their one remaining conference tilt—against lowly St. Martin's—in order to gain at least a tie for the crown.

College of Puget Sound still has an opportunity to gain half interest in the title, but must score wins over Whitworth, Western, and Pacific Lu-

theran in order to do so.

Eastern scored early in the second quarter on Central, then added two more tallies in the third period on pass interceptions. Joe Lowe went 30 yards for one, and Gene Perrault 66 yards for the other.

In another Saturday clash, a steadily improving Western Washington team pulverized cellar-dwelling St. Martin's, 40-0.

POP'S Popcorn Stand
FRESH POPCORN -- HOT PEANUTS -- CANDY -- GUM CIGARETTES

Mrs. Frisbie's BAKERY
For Good Bakery Products
710 So. 38th St. GA. 7591

SEARS Roebuck & Co.
1148 Broadway BR. 4321

FOUNTAIN PEN REPAIRS
QUICK SERVICE
Mobley's Jewelry
Garfield Street — Parkland
REASONABLE RATES
Under New Management

INSURANCE NOTARY PUBLIC
Parkland Realty
JENNY L. GRODVIG
Realtor
1950 Car License Plates
RES.: GR. 8210 GR. 7232

THREE-DAY SERVICE
on Laundry, Cleaning and Repairing
24-HOUR SERVICE AT PLANT
Fashion Cleaners
PICK UP and DELIVERY
GA. 3372 3820 Yakima

TRY FLETCHER'S — The Vets Do
Groceries -- Meats -- Vegetables
Frozen Foods
FLETCHER'S MARKET
FREE DELIVERY GRanite 8550

PARTY CAKES and ICE CREAM CUP CAKES
22 Flavors of Ice Cream
PARKLAND DELICATESSEN
GARFIELD STREET

When You Want Office Supplies
C. Fred Christensen
STATIONER
913 Pacific Ave. BR. 4629
Tacoma, Wash.

ON THE CAMPUS
For Your Convenience . . .
● Personal Stationery
● Programs
● Christmas cards imprinted
● Tickets, etc.
● We print your Mooring Mast
LaCrosse Printing Company
On the Campus, Old Chapel Bldg.

Zoological Society Offers Membership

The newly-formed Tacoma Zoological Society will throw open its doors to the public at a meeting this Friday night at 8 p.m. at the CPS Science Hall, Dr. B. T. Ostenson announced. The primary purpose of this organization is to further interest and work in the Point Defiance Park zoo and aquarium.

Three types of memberships are being offered to those interested in joining the group, including student memberships at a reduced price. Dr. Ostenson, associate professor of biology at PLC, is a member of the board of trustees as well as secretary of the society.

Mr. John W. Slipp, program chairman, and former instructor in the PLC biology department, announced that Mr. Edward Johnson, director of the Woodland Park Zoo in Seattle, will be the principal speaker. He will also show colored slides and movies of zoo-life around the United States.

Any students interested in this organization or wanting a ride to the meeting should contact Dr. Ostenson.

ENGAGEMENT TOLD

Following devotions Thursday evening, Evelyn Mikkalsen passed the traditional box of chocolates to announce her engagement to Ludwig Sigueland. Both are members of the "Choir of the West."

Refreshments were served later to an informal group with the following girls present: Norma Peterson, Amy Knutsen, Ruth LaBeck, Ellen Davis, Margaret Winters, Mildred Foege, Dorothy Keebler, Carol Rose, Beverly Thompson, Shirley Thompson, and Florence Brandstetter.

As We See It

A Tawasi Feature

"Build for Character," a motto which faces us as we come and go from the campus of PLC, is sometimes neglected and unnoticed. The question arises as to whether we all fully realize the four phases of this character building.

These four phases can be compared to the four wheels of an automobile—one is the physical wheel, another the intellectual, the third is the social wheel, and the fourth is the religious wheel. The first three seem to be in good working order, but too many of us allow that fourth wheel to go flat. Even though the fourth wheel is kept going by our attending chapel and the church of our choice, yet we allow it to become low by neglecting the other religious activities of our college.

Sunday evenings the LSA meets as an informal devotional group in order to promote Christian fellowship and to answer for us many questions pertaining to practical living. Mission Society gives us another opportunity to express our Christian faith in its meetings, in which mission study, Scripture reading and prayer are included, and also in the services which it conducts at the Midland and Criswell Old Folks' Homes and the Pierce county jail. Thursday noons Campus Devotions meets in order to promote personal Christianity through prayer and Bible study. The LDR gives the young women of our college the opportunity to promote the work of the Lutheran Church.

Let us all fully inflate that fourth tire by participating in at least one of these religious organizations.

Patronize Your Advertisers



GLEN HUFFMAN, freshman from Lincoln high, and Hank Habegger, a sophomore, are two of PLC's stalwart ends. Huffman plays both offensive and defensive and is regarded as one of the outstanding freshman prospects. Habegger, big and burly, was injured two weeks ago and will probably not see any action for the rest of the year, but he is expected to kick try-for-points and field goals.

CHANGES MADE

Two noticeable changes have occurred in Parkland this week. Harry Foster, former owner of the SUB coffee shop, is rumored to be contemplating taking over the Bug. It is not known who will take over the SUB coffee shop but two elderly couples seem interested in running it, since removal of Mr. Foster. The students reaction is that by all means someone should continue operations of the coffee shop.

Also, Parkland will have a new optometric office Nov. 12. Dr. D. M. Clise, optometrist, whose offices are in South Tacoma, announces that a complete optical service will be avail-

able, with the office to be located in the Parkland Center Building.

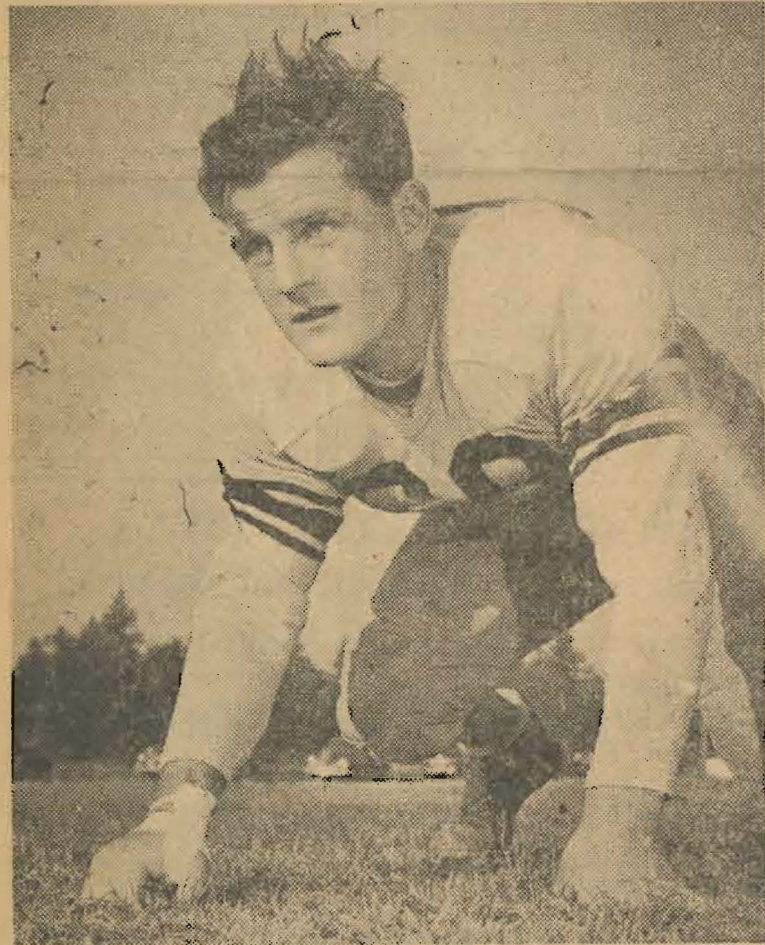
In charge will be Dr. Morry A. Tweit, who is associated with Dr. Clise.

The DONUT BAR

TAKE A DOZEN TO THE GAME

Parkland GR. 9950

Tacoma HI. 3081



JACK CARBONE, 200-pound guard from Clover Park, is playing his last year for Pacific Lutheran. Jack has been playing this position ever since he entered school and has proven in the past that he can handle it well. He is married and has no children. Majoring in Physical Education, he will graduate in June and is planning on being a high school coach.

FRANWELL'S
Waffles
our specialty
772 BROADWAY

Tune In:
Your Own
CAMPUS
RADIO THEATRE

- COLLEGE OF PUGET SOUND
- PACIFIC LUTHERAN COLLEGE
- STADIUM HIGH
- LINCOLN HIGH
- SUMNER HIGH
- PUYALLUP HIGH
- VISITATION VILLA
- FEDERAL WAY HIGH
- CLOVER PARK HIGH
- ST. LEO'S HIGH
- ST. JOSEPH'S COLLEGE OF NURSING

Every Wednesday
During School Year
6:30 P.M.
KMO 1360 ON YOUR DIAL
*Rebroadcast — KTBI
9:30 A. M. Saturday

Sponsored by

your TACOMA CITY LIGHT

Radio Program Given By Mission Society

A decision to present a thirty-minute radio program monthly commencing in December was reached by a Mission Society committee which met last Monday evening, Bill Williams, group chairman, announced.

Rev. Pellet, service pastor of Associated Lutheran Welfare, through whom the Mission Society conducts its Sunday evening jail service, spoke on home missions at the meeting last week.

Doctor Knorr, adviser of the society, was introduced to the group last Wednesday evening by President Merlin Zier, who also expressed appreciation to Mr. and Mrs. Earl Erickson, who regularly post pictures and information regarding the theme of the next program.

ANNOUNCEMENT

Contrary to the Mooring Mast schedule, printed in the October 7 issue, the Mooring Mast will be published on Armistic Day, November 11, 1949.

Complete
Banking
Facilities
in the nearby
Lincoln District



LINCOLN BRANCH
3808 South Yakima Ave.

Member Federal Deposit Insurance Corporation

University Daily Kansan

Truman Proposes Health Bill For Country
Clouds Forecast For KU Relays
Exposition Has Many Displays In Engineering
2,220 To Compete In Kansas Relays



Dine-A-Mite Inn
Lawrence, Kan.

Meeting the gang to discuss a quiz—a date with the campus queen—or just killing time between classes—the Dine-A-Mite Inn at the University of Kansas at Lawrence, Kansas is one of the favorite places for a rendezvous. At the Dine-A-Mite Inn, as in all college off-campus haunts everywhere, a frosty bottle of Coca-Cola is always on hand for the pause that refreshes—Coke belongs.



Ask for it either way... both trade-marks mean the same thing.

BOTTLED UNDER AUTHORITY OF THE COCA-COLA COMPANY BY THE COCA-COLA BOTTLING COMPANY, TACOMA, WASH.
© 1949, The Coca-Cola Company

GLADIATOR SERVICE
SIGNAL GASOLINE

Pac. Ave. & Arthur St. GR. 9946

Brookdale Lumber Company

Brookdale GR. 8669

98th ST HARDWARE STORE

NEAL E. THORSEN
TRICKS - JOKES - MAGIC

Costumes - Tuxedos - Serpentine
926 1/2 Broadway MA. 4861



PIPER FUNERAL HOME
phone HILLSIDE 8479
5436 So. Puget Sound Ave.