



VOL 6 NO 17 Pacific Lutheran University February 6, 1969

Oscar Peterson In Concert Here



OSCAR PETERSON

The Oscar Peterson Trio, one of the foremost jazz groups in the country, will appear in concert at Pacific Lutheran Feb. 11.

Scheduled for 8 p.m. in the Memorial Gymnasium, the concert is brought to campus by the PLU student body Entertainment and Artist Series.

Peterson's specialty is the piano, but he is also a well-known composer. He made his U. S. debut at New York's Carnegie Hall in 1949.

While the trio has changed personnel since it began, it has maintained its place as a leader on the jazz circuit.

The trio currently features, in addition to Peterson on piano, Bobby Durham on drums and Sam Jones on the bass.

Durham has been playing the drums professionally since age 16. Before joining the Oscar Peterson Trio in 1967 he toured with the Duke Ellington Orchestra.

Jones made a name for himself in the early '50s in New York and has played with such name bands as Dizzy Gillespie and Thelonious Monk. He joined Peterson in 1966.

ROUNDTABLE

Dr. John A. Schiller, (soc.), is heading a family life institute at Little Church on the Prairie each Thursday evening in February, beginning Feb. 6. The institute is based on a study of Lakes and Cloyer Park High School sophomores done by Dr. Schiller. . . Dr. Kwong-Tin Tang (Physics) has been very busy recently. He co-authored a paper entitled "Solutions of the Reduced Wave Equation in an Infinite Domain," presented at the American Mathematics Society meeting in New Orleans in January. . . he also authored a paper which appeared in the Journal of Chemical Physics entitled "Upper Bounds for Vander Waals Interactions of 2 & 3 Atoms". . . another is going to appear in the Feb. 15 issue of the Journal of Chemical Physics entitled "A Solvable Quantum Mechanical Model of 3-Body Rearrangement Scattering". . . he is in New York City this week attending the American Physical Society's annual meeting. . . Faye Lundblad (library) and Ken Dunmire (photographer) returned to campus this week after extended bouts with Hong Kong flu. Lundblad was home for five weeks with complications including pneumonia. Glad to see you both back. . . New PLU faculty this semester include Ani Clipper Watene (science lab tech.), Lorna Milham (Eng.), Robert Menzel (soc.), Ann Lee (nursing), and John Martilla (bus. ad.). Welcome to the PLU faculty. . . Farewell to terminating employees Pat Raether (data processing), Carol Anderson (U. rel.), Thelma Abraham (head res.), and Janet Erwin (Eng.). . .

LIBRARY ASKS AID IN KEEPING AFRO-AMERICAN LISTS CURRENT

The Robert A. L. Mortvedt Library is co-operating with the leading libraries of the Tacoma area in the preparation of a Union List of publications by Afro-American authors and editors. Our holdings have been reported.

However, in order that the bibliography may be kept current, all faculty requesting books known to be authored or edited by Afro-Americans should be identified on the order cards at the time submitted.

Miss Blomquist Leaves On European Tour

A seven-month European trip began this week for Grace E. Blomquist (Eng.).



Miss Blomquist plans to review children's literature during her tour. The trip was made possible by a faculty growth award from the American Lutheran Church and a sabbatical leave granted by the university.

Visits to the International Youth Library in Munich, International Children's Book Fair in Bologna, Italy, and the International Conference in Children's Literature, Loughborough, England, are on Miss Blomquist's agenda.

She will also spend time in Lisbon, Madrid, Rome, and Vienna studying at libraries and universities.

Miss Blomquist came to PLU in 1939. She became dean of women in 1943 and served in that position for several years before returning to full-time teaching.

An active member of several community organizations, Miss Blomquist has served as president of Tacoma's Quota Club and the local branch of the American Association of University Women. She is presently or has been a member of Pi Lambda Theta; the National Education Association; Pierce County Mental Health Society; and a Sunday School teacher and member of the Board of Education at Trinity Lutheran Church.

ATTENTION FACULTY AND STAFF

Faculty and staff members wishing to order a 1968-69 Saga may sign up (and pay \$10) at the Information Desk or mail a check to Saga, Box 141. Please order your book as soon as possible.

Schiller On National Committee For HEW

Dr. John A. Schiller (soc.) has been appointed as a member of the Advisory Committee to the Social and Rehabilitation Service on Social Work Manpower and Training Program, Department of Health, Education and Welfare, Washington, D. C.

He will serve a three-year term along with five other committee members selected from throughout the country.

He will assist in reviewing and evaluating applications for fund allocations and advise on policies and procedures of the Social and Rehabilitation Service. The agency has received appropriations of \$3 million for fiscal year 1969.

The agency's purpose is two-fold, according to Dr. Schiller. First, the government is hoping to stimulate graduate and undergraduate education programs to help relieve manpower shortages in the helping services.

Secondly, the effort is to provide better utilization of existing resources.

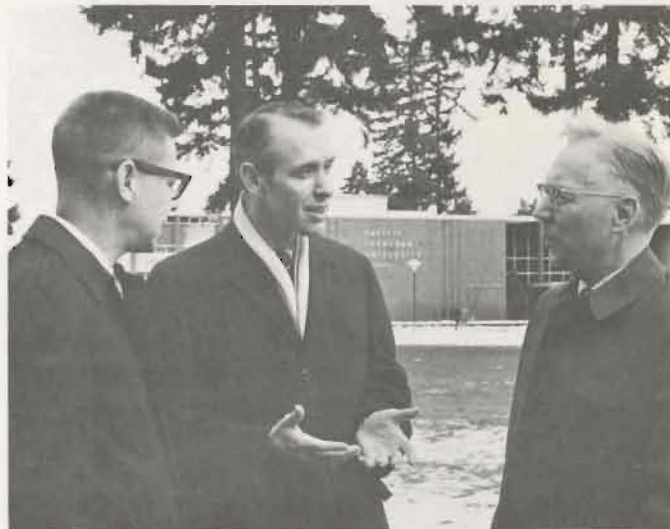
A contributing factor in his selection, according to Schiller, is his involvement for the past two years on a special committee for undergraduate social work education for Council on Social Work Education.

Schiller has also been active in human relations seminar and black culture programs in the Tacoma area. He was recently elected to a six-year term on the Board of Social Service for the American Lutheran Church.

PLU MASTER PLAN DISCUSSED BY DEVELOPMENT ENGINEER

A representative of the engineering firm developing long-range plans for Pacific Lutheran University and Evergreen State College in Olympia spoke at PLU Thursday, Feb. 6.

George W. Wickstad, director of planning for Quinton Engineers of Los Angeles, discussed the PLU 10-year development program and general comprehensive planning.



Dr. Paul M. Dietterich, WCC United Nations Church Center director of program (center) chats with Rev. John Larsgaard (l) and Dr. Emmet Eklund Monday.

World Council Leaders Visit PLU Campus

Dr. Willem A. Visser 't Hooft, honorary president of the World Council of Churches, Geneva, Switzerland, led a team of representatives from the World Council in a visit to Tacoma this week.

Dr. Visser 't Hooft was presented with the Pacific Lutheran University Distinguished Service Medal at a special PLU convocation in Eastvold Auditorium Wednesday.

Other Tacoma visitors from the World Council include Paul M. Dietterich, director of program for the Council at the United Nations Church Center, and Juan Velasco Faune, attorney and member of the faculty of law at the University of Mindanao, Phillipines.

Dietterich spoke at a PLU convocation Monday.

The purpose of the team's visit is to bring local church councils into a closer relationship with the national and international organizations.



Seattle Art Museum representative Henry Trubner examines Vishnu (in hand), from Cambodian early Kmer period, and four-armed diety (Javanese), from the Art Museum's Eugene Fuller memorial collection.

FAR EASTERN AND SOUTH PACIFIC ART OBJECTS DISPLAYED AT GALLERY

Currently on exhibit at the PLU Library Gallery is a collection of art and rubbings from the ancient Cambodian religious site of Angkor.

The site is one of the most extensive, complex and highly developed architectural and sculptural centers in Asia, considered the height of classical Kmer art. Those on display deal with narratives concerning the Hindu and Buddhist gods.

There is also a selected collection of Indian, Javanese, Balinese, Thai and Cambodian art from the Asian collection of the Seattle Art Museum.

The exhibition is sponsored by the Art Department and the ASPLU. The gallery is open from 8 a.m. to 10 p.m. Feb. 1-27.

KNIGHTS 7TH IN BANFF INTERNATIONAL SKI MEET

PLU finished seventh in the Banff International Collegiate Ski Meet this weekend. The University of Denver swept all but two events to win the meet.

In the slalom PLU's Ron Moblo was 37th; Jerry Gugel finished 19th in cross country and Dave Christopherson was 22nd in jumping.

LUTES FINISH 2ND IN LINFIELD SWIM MEET

The PLU Knights finished second to Southern Oregon in the Linfield Invitational Swim Meet and McMinnville Saturday. Scores were S. Ore. 94; PLU 78; Ore. College of Ed. 49; Linfield 17; Willamette 16; Lewis & Clark 11; and Pacific U. 5.

Dave Hanson of PLU won the diving competition. Seconds went to PLU's Randy Senn (100 and 200 freestyle), Steve Senn (500 freestyle) and Rich Hundven (100 backstroke).

Choir Of The West Sets Homecoming Concert

Pacific Lutheran University will host its Choir of the West in concert next Sunday, following the completion of a tour through the Northwest.

The homecoming concert in Eastvold Auditorium begins at 8:15 p.m.

Director Maurice Skones and his 71-voice choir left the campus Jan. 25 and are presently performing 15 concerts in Washington, Montana, Saskatchewan, Alberta, and British Columbia.

The final tour concert will be held in Seattle at Shoreline High School Saturday at 8 p.m.

Skones, now in his fifth year as director of the a cappella singers, will feature works of Bach, Berger, Schumann and Willan during the homecoming concert.

Tickets are available at the PLU information desk.

Knight Cagers' Win Streak Now 4

The Pacific Lutheran University Knights made it four wins in a row this weekend, beginning Friday night with a stunning upset victory over Linfield 77-70 and following with a 60-48 win over stubborn Pacific University.

The twin victories gave the Lutes a 6-4 mark and third place in the Northwest Conference. The squad is now 7-9 on the season and will be seeking to raise their season record over .500 for the first time during this weekend's clashes with College of Idaho and Whitman. All three games (Whitman is a double-header) are on the road.

The Knights got off to a slow start Friday in what was a two-man confrontation the first six minutes. 6-8 Wildcat center Dan Beeson scored Linfield's first six points and pulled down five rebounds during the period. The Lutes' Al Kollar nearly matched him with five points.

Beeson scored nine of the first 11 Wildcat points, while Kollar had nine of the Lutes' first 14. Linfield led by seven points midway in the first half, but six points by Ralph Whitman and four points by Kevin Miller closed the gap to 44-43 at halftime after the Lutes had taken a brief 43-42 lead. Kollar got in early foul trouble, but Ake Palm filled in admirably on the boards and scored seven points in the process.

Beeson was slowed by fouls and didn't score a point in the second half as the Lutes held slim one and two point leads up to the 10 minute mark when Beeson fouled out. Then PLU pulled away to a 71-60 lead as Palm hit eight points and Doug Nixon added seven. Linfield went for nearly 10 minutes without a field goal.

In the final three minutes the Wildcats narrowed the gap to 73-68 before Nixon put the game out of reach with three free throws. It was the Wildcats' first loss in 11 games.

Lute scoring was led by Palm's 18 points, followed by Kollar and Nixon with 17 each. Palm and Kollar had 12 and 10 rebounds respectively.



Al Kollar (30) hooks a two-pointer over Linfield center Dan Beeson during Friday's 77-70 Lute win.

At Pacific, the Lutes enjoyed balanced scoring to pile up a 29-12 lead with two minutes to go in the first half, but Pacific came back with six quick points to make the halftime score 33-20. In the second half the Boxers outscored the Lutes 28-27, but were never able to close the early gap.

Al Kollar scored 12 points in the first half and finished with 18. Palm finished with 12. On defense, it was Palm and Kollar with 12 and eight rebounds respectively.

The Lutes enjoyed their best shooting percentage of the season against Pacific, canning 50.5 percent from the floor. Palm and Kollar are now shooting better than .500 in conference games.

Kollar is the scoring leader with 13.9 points per game over the season. Palm is averaging 10.9, but has scored 13.3 in conference play.



VERNON L. STINTZI

Stintzi Takes State Post

Vernon L. Stintzi, (bus. ad.), has been appointed Pierce County administrator for the Washington State Department of Public Assistance.

Stintzi, 53, will be responsible for the administration of the department's Pierce County program. He has been given a one-year leave of absence from PLU to accept the position.

Stintzi's position has been created and designed in part to improve communication and cooperation between the department and local colleges and universities.

Stintzi has recently served as a PLU consultant to the State of Washington, conducting research on management problems related to the administration of social service agencies.

BIRTHDAYS

| | |
|----------------------|-------------|
| Tony Aberle | February 5 |
| Cathy Christopherson | February 8 |
| Audrey Gisler | February 10 |
| Kenneth McKenzie | February 11 |
| Richard Johnson | February 16 |

Martilla Joins PLU Faculty

John A. Martilla of Eugene, Ore., has been appointed to the Pacific Lutheran University faculty as associate professor of marketing and communications.



A *summa cum laude* PLU graduate in 1963, he served the university as an instructor the following year.

During the past year he worked as a graduate research assistant at the University of Oregon, where he is completing requirements for a doctoral degree.

His research deals with effectiveness of promotional communication in selected white paper converting markets.

During the summers of 1965-67, Martilla was employed in the marketing research department at Weyerhaeuser Co. in Tacoma.

He received his master's degree from the University of Oregon in 1966.

Professional societies include Alpha Kappa Psi, American Marketing Association, Beta Gamma Sigma and Pi Gamma Mu.

NEW TESTAMENT SCHOLAR SPEAKS AT PLU WEDNESDAY

Dr. Joachim Jeremias, distinguished New Testament scholar from the University of Göttingen, Germany, will speak in Xavier 201 at 4:30 p.m. Wednesday.

His topic will be "Exegesis of a Parable of Jesus."

Dr. Jeremias is one of the leading living theologians in the world working especially in the area of the life of Jesus.

* * * * *

The day will happen whether or not you get up.



Visitors at Pacific Lutheran University were given the green carpet treatment last week.

The occasion was the installation of 10,000 square feet of Astro-Turf artificial grass carpeting in the new PLU fieldhouse, a part of the school's new \$2.1 million Clifford O. Olson Physical Education Auditorium Building. The entire complex is slated for completion and dedication April 18.

Installed by K & D Carpet Co. of Seattle, the artificial carpet will completely cover the fieldhouse floor, which measures approximately 80 by 115 feet. The facility will be used for track, football and baseball practice and will include provision for archery, golf, tennis, volleyball and other sports.

The new fieldhouse flooring is believed to be the first large indoor installation of Astro-Turf in the northwest and the second in the nation.