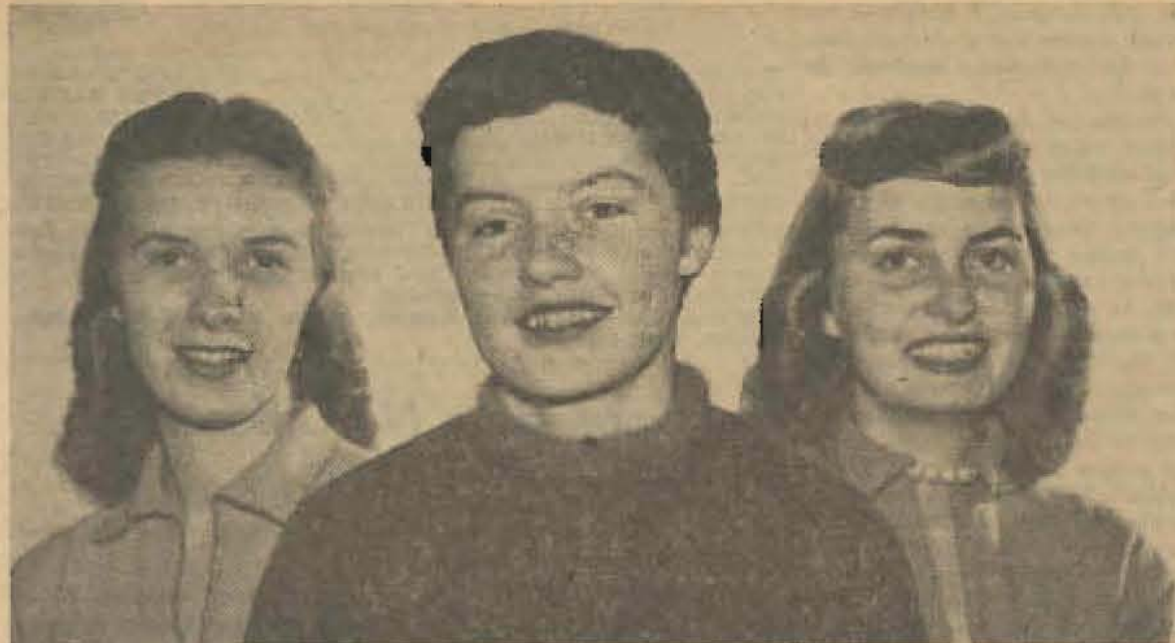


# Swedish Tradition To Be Reenacted



One of these freshman girls will be crowned "Lucia Bride" tonight. The girls are Mary Ann Lovtang, Marie Ostroot, and Joy Nelson.

## Lucia Bride Will Be Revealed at Festival

Who will be Lucia Bride for 1956?

The big question will be answered tonight. She will be announced as she appears on the balcony of the Class Building at the Lucia Bride Festival which will begin at 8 p.m. Will it be Mary Ann Lovtang, Joy Nelson, or Marie Ostroot?

Before the coronation, Bettelou Macdonald will explain how the Lucia Bride tradition originated in Sweden. The oldest girl of each household would get up early to serve her people on an appointed day of each year. With the crowning of one of the three finalists by Nerle Hanson, ASPLC president, the program will open with a violin solo by Sandra Schierman playing "Nordic Song," by Ole Bull, and "Sloveig Song," by Edvard Greig.

### Musical Program Planned

The program for the rest of the evening includes a song, "Ved Rundarne," by John Cooley; a flute trio by Twilla Gillis, Joanne Bayne and Miriam Stoa; an accordion solo of the "Christmas Dance," by Norma Nelson; and the Eighth Notes, consisting of Audry Hart, Peg Byington, Mary Lou Engen, Teddi Gulhaugen, John Cooley, Bob Hodke, Richard Rhen and Vince Novak, will sing "The Carole of the Birds" and "The Holly and the Ivy," accompanied by Mardell Soiland and directed by Ron Smith, Eddie Lar-

son will be song leader and Betty Mjølhus pianist.

This year the Spurs are attempting to make the whole affair as authentic as possible. They will wear Swedish outfits, the Lucia Bride and her attendants will also wear Swedish garments, and Swedish cookies and cake will be served as part of the refreshments. An admission of 35 cents will be charged.

### Nine Others Nominated

Other Lucia Bride candidates nominated were Patti Ahrens, Marilyn Boe, Dee Duen, Melva Fuhr, Suzanne Grubbs, Hazel Hansen, Hildred Hansen, Gail Holt, and Eunice Petersen.

Committee chairmen are Alice Jessen, general chairman; Evelyn Hyder, publicity; Beverly Swanson and Marlene Eichmeier, costumes; JoAnn Hanson and Evelyn Hyder, decorations; Lois Helberg and Peg Byington, refreshments; Patti Finn, Miriam Stoa and Joyce Hansen, program. Jan BonDurant is junior advisor and Mrs. Theodore Karl is senior advisor.

## Herb Dempsey To Play Lead In 'Christmas Carol' Monday

Homecoming, the kicking post, and tests.

All three are institutions that are here to stay. But no less a PLC institution is the annual presentation of Charles Dickens' beloved "Christmas Carol."

Each year since 1948, "A Christmas Carol" has been given on the second night before the beginning of the holiday vacation. In past years, the play has been presented on the same night as the Christmas dinner. This year, however, the banquet is being held several days before the play. As in the past, students will be caroling throughout the Parkland vicinity following the play.

### Madrigals To Perform

Opening the program next Monday night at 8 p.m. in the CMS, the Madrigal Singers will sing a group of three numbers—"The Holly and the Ivy," arranged by Jacques

"Christ is at Thy Portals," a medieval French carol; and "Ding Dong! Merrily on High," another early French carol, arranged by Wood. The Madrigals, directed by Frederick L. Newnam, are: sopranos, Peggy Byington, Mona Carlsson, Hazel Hansen, Sandra Jacobs, Laura Tipple, and Janet Stephenson; contraltos, Victoria Fischer, Jo Ann Hanson, Carolyn Krug, Joanne Rohrbaugh, and June Rose; tenors, John Cooley and Robert Hodke; baritones, Richard Fisher, Gary Malmin, Bill Orme and Al Ostroot.

Dr. J. P. Pfeuffer will read the story of the nativity from Luke.

### Audience Will Sing Carols

Immediately following the play, the Madrigals and Mr. Newnam will lead the audience in the singing of several familiar carols.

Players in "The Christmas Carol" are: Scrooge, Herb Dempsey; Bob Cratchit, Lyle Pearson; bill collector, Dwayne Peterson; Fred, nephew of Scrooge, Dick Stull; Marley's

(Continued on page four)

## APO May Purchase New Shuffleboard

Purchase of a new shuffleboard or an additional ping-pong table for the recreation room in CUB is being considered by APO.

The shuffleboard which was installed last year in the game room has deteriorated beyond repair. There is ample room in the game room for the addition of another ping-pong table should the purchase of a table be decided upon.

Jon Soine reports that APO has at present \$100 left from last year's Handsome Harry contest which has been allocated for use in furnishing the game room.

At a recent meeting APO tabled a motion that called for \$125 in addition to the \$100 already on hand with which to purchase a new shuffleboard. The Washington Amusement Company has offered to sell a \$1,000 repossessed board for \$225. The \$225 price includes a \$50 trade-in allowance of the old board.

APO decided that more time would be needed to determine whether the purchase of a new board would be wise in light of the short life of the last one. Should this purchase be deemed unwise, an additional ping-pong table will probably be purchased. Establishment of shuffleboard leagues in the intramural program is a possibility if a new board is purchased.

## ACTIVITY SCHEDULE

- Dec. 14—Lucia Bride Festival, 8 p.m., CB-200.
- Dec. 15—Christmas Banquet, 5:30 p.m., CUB; Lady Lutes Party, 8:00 p.m., CB-200.
- Dec. 16—Worship Service, 11 a.m., CMS. Christmas Concert, 3:30 and 8 p.m., CMS.
- Dec. 17—"Christmas Carol," 8 p.m. in CMS.
- Dec. 19—Christmas Recess begins, 5 p.m. Basketball, Westmont, 8 p.m. gymnasium.

# The Mooring Mast

VOLUME 34

PACIFIC LUTHERAN COLLEGE, FRIDAY, DEC. 14, 1956

NUMBER 10

## Sheldahl Awarded \$100 Scholarship

Lowell Sheldahl has been awarded the \$100 Ernest Dolke scholarship which is given by the Tacoma Lumbermen's Club. The scholarship is given annually to a student here.

Sheldahl, a junior majoring in classical languages, was awarded the scholarship last Friday at the meeting of the Lumbermen's Club in Tacoma. The gift was presented to Sheldahl by Paul M. Smith of Evergreen State Forest Products. In gratitude Sheldahl termed the scholarship "certainly a big help."

## Annual Christmas Concert To Be Presented Sunday

Sunday afternoon and evening the annual Christmas concert by the Choir of the West, chorus, and orchestra will be presented in the CMS at 3:30 p.m. and again at 8 o'clock.

Highlight of the concert will be the presentation of selections from Bach's "Christmas Oratorio" and Handel's "Messiah." They will be sung by the choir and chorus en masse, accompanied by the orchestra. Gunnar J. Malmin will lead the group.

Additional selections from these two great musical works for Christmas will be the performance of the soprano recitatives by Roxie Bergh and prelude, offertory, and postlude selections played by the orchestra. The orchestra will be directed by Gordon Gilbertson.

Individual groups of songs will be presented by the choir and chorus.

The Choir, directed by Malmin, will present "Hosanna" and "Et In carniatus Est," "Praise to the Christ Child," with Janet Stephenson soloist, "Cradle Song," Roxie Bergh soloist, and "A Joyous Christmas Song," sung in Norwegian.

R. Byard Fritts will direct the chorus in "I Saw Three Ships Come Sailing In," "How Far Is It to Bethlehem," "So Bless a Sister," "Christ Was Born on Christmas Day," "The Carol of the Birds" and "Ya Viene."

In the tradition of these concerts, Dr. S. C. Eastvold will read the Christmas Gospel and audience participation in Christmas Carol singing will be added. Mr. Karl will announce.

Both concerts will be open to the public and a free-will offering will be taken. The 3:30 concert will be broadcast live over KTAC and will be re-broadcast on Christmas Eve.

## An Old Fashion Christmas Is Theme for Banquet

An old-fashioned Christmas theme will be carried out at the Christmas banquet tomorrow night in the CUB. Wandering minstrels will sing carols while punch is being served before dinner. Dress will be semi-formal—best dresses for girls, suits for boys.

Punch will be served from 5:30 to 6:30 in the game room, student lounge, and foyer. At 6:30 dinner will be served with two lines in the cafeteria and one in the coffee shop. The tables will be set with everything but the hot food.

### Open House Planned

After the banquet, which is the last party before Christmas, there will be open house in all the dorms, and after-dinner coffee will be served. All off-campus students, their husbands or wives, and the faculty are invited to the open house. "We'd like to be able to invite everyone to the banquet, but there just isn't enough space, so the banquet will be for boarding club members only," said Miss Quast.

AWS is in charge of arrangements, with Esther Ellikson as general chairman. She states that Mr. Fritts will be master of ceremonies and that this is the first time there has been a program at the Christmas banquet.

### Program Is Announced

On the program will be: an instrumental quartet, the West Hall Trio, Bob Fleming giving a reading, Meg Evanson doing a piano solo, Hazel Hansen singing, the Am-

bassador Quartet, Gene Pisker reading the Christmas story from Luke, and Roxie Bergh singing.

Committee chairmen are: Nancy Olsen, program; Barbara Sundblom, table setting, and Marilyn Boe, punch. Uncle K members will direct traffic and wait on tables.

## Babysitters Be Alert, Lady Lutes Plan Party

Baby sitters be on the alert. The Lady Lutes and their escorts are having a party tomorrow night in the CB-200, festivities beginning at 8 p.m.

Miss Anne Knudson, sum of honor, is going to give an interpretative reading. A "White Elephant" gift exchange will be held. The evening will terminate in the true Christmas air with a carol sing led by Paul Lucky, who joined the "bawl and chain" group this summer.

The hostesses will be Mesdames Douglas, chairman; Hasley, Butts, Charleston, Lucky, Sayer, Whitmore, Marks, Steinfeld and Deasy.

Planning the bright holiday decorations and entertainment are Mesdames Ellis and Berton as co-chairmen, and Steinfeld, Peterson, Hall and Flakus.

The next issue of The Mooring Mast will come out on January 11, 1957, due to the Christmas recess.

# Saint Lucia Martyred

Who in this Lucia character that program is so excited about?

St. Lucy was a beautiful Christian maiden who lived in Rome. She was betrothed to a pagan boy against her will. Her mother was afflicted with a disease and Lucy persuaded her to visit the shrine of St. Agatha, to pray that she might be healed. While at the shrine Lucy had a vision of St. Agatha, who assured her of her mother's recovery. At the joy of her recovery, Lucy dedicated herself to a religious life and to the care of the poor.

This so enraged St. Lucy's lover that he denounced her as a Christian. She was taken to the governor, persecuted, tortured, and was to have been burned at the stake, but a soldier fatally killed her by piercing her neck with a sword.

Another legend of St. Lucia concerns her pagan boy friend. He complained to her that her beautiful eyes haunted him day and night. To discourage him she cut them out of her head and sent them to him on a dish, begging him now to leave her to her devotional aspirations. By a miracle, her eyes were restored more beautiful than ever. This cured her lover and converted him to Christianity.

Her body remained in Syracuse for many years, but then moved to a rich chapel of St. Vincent's Church in Metz where it is exposed to public veneration. She is often represented with the balls of her eyes laid in a dish, and sometimes light proceeds from a wound in her neck.

The story of her martyrdom and sainthood was carried north to Scandinavia by missionaries, and twelve days before Christmas the Swedish Christmas begins with the tradition of Lucia. St. Lucia would go around early in the morning with candles on her head serving breakfast to the poor, thus the Lucia Bride has candles on her head.

FOR OFFICE SUPPLIES  
See  
**C. Fred Christensen**  
BOOKSELLER & STATIONER  
932 Pacific Avenue BR. 4629  
Tacoma, Wash.

BOOKS FOR CHRISTMAS  
**ENDURE**

GIBSON GREETING CARDS  
**ENDEAR**



SHOP CONVENIENTLY  
'TIL SEVEN

**PLC BOOKSTORE**

Reading Time — 30 seconds  
**Temporary vs. Protective Saving**

In Grandpa's day folks used to stash their money away to provide for their old age. Then came today's new standard of living. Now most people save until they can afford the next new product or service they've been wanting.

So, it's all-important to distinguish between temporary saving and protective saving — the kind which provides financial security for yourself and your family in the future. That's life insurance saving!

LUTHERAN BROTHERHOOD life insurance is the safe and sure investment that stays with you down through the years ... continually growing, constantly adaptable — always protecting.

This security is another reason why hundreds of students start their life insurance program with Lutheran Brotherhood while they're in school. You, too? Write ...

**Lutheran Brotherhood**

701 Second Ave. So. • Minneapolis 2, Minn., or contact

EINAR BOTTEN

312 North 85th Street

Seattle 3, Washington

Living Benefits for Lutherans through Life Insurance

# A Thought

Kahlil Gibran, in *The Prophet*, observed that men are often yoked by their freedom. "I have seen the freest among you wear your freedom as a yoke and a handcuff," he said.

Is this not, perhaps, the state in which many of our ideas, beliefs and attitudes place us? In our religion, do we not often go so far in paying obeisance to our God that we neglect many of the things he would have us do, and moreover, fail to appreciate, because of our pre-occupation with the mechanics of the thing, the real pleasure and beauty of our faith? Does not even our education become an idealized end in itself rather than a means to greater enjoyment of all of life when it becomes such an obsession within our very minds that we are unable to enjoy its fruits? So too, do our loyalties to many things cause us to bear a burden which is greater than the thing to which we hold the loyalty.

That the answers to these questions are such as they must be to many of us, means that we do not have a proper assignment of values to the multiplex that makes up our lives. When a person becomes a slave to his own freedom or religion or education, it is time he took that step behind himself to re-appraise the situation and to re-apportion the emphasis which he places upon these, and many more things.

A place for everything, and everything in its place, in our lives with regard to our ideas and aspirations and endeavors, can be the basis of a rich and happy life, but a badly arranged system of appreciation can lead to nothing but misunderstanding and despair. — n. munson

**Laurinat's Apparel**

We Outfit Co-eds

406 Garfield St. GR. 5318

**STELLA'S FLOWERS**

Flowers for All Occasions

12173 Pacific Ave. GR. 7863  
(Foot of Garfield) We Deliver

**HI-FI PHONOGRAPHS RECORDS and**

Magnavox Headquarters

**TED BROWN MUSIC**

1121-23 Broadway BR. 3211

**FASHION CLEANERS**

3820 South Yakima

★ ★

**FREE PICK-UP**

and

**DELIVERY SERVICE**

Parkland and Vicinity

★ ★

Phone HA. 3372

# The Mooring Mast

Published every Friday during the school year by the students of Pacific Lutheran College

Office: Student Union

Telephone GRanite 8611

Subscription Price—\$3.00 per year



EDITOR ..... DON KYAMME  
FEATURE EDITOR ..... PAT RANKIN  
SPORTS EDITORS ..... TED SIEK, DAVE CROWNER  
BUSINESS MANAGER ..... DOUG MANDT  
BOOKKEEPER ..... CAROL HOUSE  
ADV. MANAGERS ..... CAROLYN ANDERSON, MARY LOU ENGEN  
COPY STAFF ..... LAURADEL BEECKROFT, GAIL WESTBY  
REPORTERS—Gerry Cruver, Pat Darville, Barbara Davis, Marilyn Donaldson, Sylvia Fong, Kathe Garrison, Nathalie Ho, LaVern Lewis, Rolly Opsahl, Diana Paul, Carol Pfannkuchen, Tom Reeves, Don Ronken, Doris Siek, Nancy Sinclair.  
CIRCULATION — Mary Ann Halgren, Arlette Knutson, Joanne Rolanbaugh, Santa Isaacson.

## Christmas Here No Different According to Kim and Kayaian

Santa Claus, it seems, really does get around. In Korea he appears in newspapers urging all to buy a particular delicacy as a Christmas present, according to Chong Jim Kim, who lives in Seoul.

"In Korea Christmas is celebrated about the same as in your country," he informed. "On Christmas Eve we go about singing carols. This is a special treat for us because there is usually a curfew at 11 p.m. on all nights except this night. On Christmas Day," Kim continued, "we have a special dinner and go to church. A party is also given in the church at night. We give out presents and send

Christmas cards during the season as you do."

Kirayr "Jerry" Kayaian, of Armenian ancestry, lives in Baghdad, Iraq. "The Christians in Iraq compose a very small part of the population," he states, "so there is no public declaration of the Christmas season. Our celebration is centered in the home with close relatives and friends. We have a Christmas tree and decorate much the same as Americans. About the only difference I've noted," he concluded, "is that the religious aspect of Christmas is more emphasized in Iraq. No commercialism is involved."

## 'Case of the Missing Books'

Mysteries at PLC? Well, there's one in the library. Namely the "Case of the Missing Books." According to Librarian F. Haley, 24% of the botany books have been taken from the library without first being checked out. Similar situations exist in other areas of the library.

To find a solution to this problem, Dr. Ford asked her biology students who use the botany books two questions: "How can the library keep books?" and "How can they get them back?"

Some excerpts from their statements which voice solutions to the "Case of the Missing Books," are: "A complete search of the dorms could be worked out."

"Post guards at the biology section of the library."

"It's a little late to start telling kids to change their insides."

"It's a process of growing up! Kids don't know any better. They have no sense of respect for other people's property. I'm 25 and from

observations have these grounds to stand on."

"Make fines larger."

"There should be two days or a week of 'Restock the Library.'"

"It could be solved if it were presented to the student body as a real problem and if more severe penalties were inflicted."

"Being of sound mind and body, I feel students of today cannot actively be expected to use the honor system. 'Do as much as you can, as fast as you can, as well as you can.' And when it comes down to brass tacks if you do this (but somebody else does it better than you) he'll get the A, you'll get the C or B. And then the educators of America have the audacity to say, 'We employ the honor system.'"

One student suggested that the problem could be solved if professors would quit giving assignments.

"Place botany books in a special reading room and have special reading periods."

Mr. Haley pointed out that the problem was precipitated by the sudden demand for books in a field which the library had a small collection. However, as the books are demanded and are used in a particular field more books will be added to that collection.

**VERN'S**  
Deluxe Hamburgers - Old Fashion Fish and Chips - Delicious Pies and Cakes  
**WE MAKE 'EM FRESH DAILY**  
Full Fountain Service  
Ninth & Pacific Tacoma

OPEN SIX DAYS A WEEK . . .  
**GERRY'S BEAUTY SALON**  
LATEST CUTS AND STYLES  
In IGA Foodtown GRanite 3434

Expert Dry Cleaning Laundry Service  
**CENTRE CLEANERS**  
ONE-DAY SERVICE PARKLAND CENTER  
Mrs. Jo Summers  
PH. GR. 4300

# Loggers Smitten By Lutes, 107-69

Big Chuck Curtis and little Roger Iverson, leading the way with 52 points between them, the red-hot Lutes overwhelmed the Loggers on their own floor, 107-69, Tuesday night. In winning, the Lutes broke the CPS Field House record by five points and shattered the all-time PLC high point total by eleven points.

Almost immediately after the tip-off, guard Roger Iverson clicked with his favorite jump shot and the Lutes were underway 2-0, the closest their opponents were ever to be in the game. With all the starting five finding the range, the Lutes steadily widened the margin. Coach Harshman began to substitute, first

The Lutes, after this weekend of rest, will resume their basketball warfare Wednesday night when they meet Westmont College at 8 o'clock. Westmont is located in southern California. Although the school has a small enrollment, their quintet, which is an independent, is expected to be a sharp shooting outfit.

with Lute Jerstad and then Tom Sabli, Arden Iverson and Rich Hamlin. Iverson was deadly in the first half, canning five field goals and six out of six free shots. Rog could not miss; he swished a one-handed howitzer from beyond the center line as the buzzer ending the first half sounded. Amid the uproar of PLC fans, the shot was ruled late. The Lutes walked off the floor at half-time to let the hoop cool, leading 51-37.

### Curtis Connects

The second half saw no change of pace as the Lutes stayed zeroed in on the basket. Chuck Curtis, with only 5 points at half-time, calmly began to demoralize the Logger defense with precision jump shots and free throws. As the score neared the nineties with about 5½ minutes to play, Chuck glanced at the scoreboard clock and then seemed to realize what the Lute rooting section was screaming for—100 points or more. With four minutes left, Harsh again turned his starting garnis loose.

The Lutherans surged past the 100 mark. Jim Van Beek had the honor of breaking the Field House scoring record. From the foul line Jim made two perfect throws, 102 and 103.

### STATISTICS

P. L. C.	FG	FT	PF	TP
Curtis, f	9	5-5	3	28
Van Beek, f	5	0-4	2	14
Keldeman, c	4	2-1	2	11
R. Iverson, g	9	6-0	0	24
Sinderson, g	1	2-2	0	6
Hamlin	0	0-0	1	0
Sabli	3	0-1	3	7
Boiko	2	0-1	1	5
Jacobson	0	0-0	1	6
Campbell	0	0-2	0	2
A. Iverson	0	0-0	5	0
Jerstad	2	0-0	1	4
Totals	35	15-22	19	107

C. P. S.	FG	FT	PF	TP
Hanus, f	2	0-3	1	7
Olsen, f	1	0-0	0	2
Barnet, c	2	2-0	1	6
Moseld, g	4	3-0	3	16
Thacker, g	1	0-2	0	4
Bowman	7	1-0	1	15
Nance	3	0-0	1	6
Palmer	0	0-0	2	0
Grazier	0	0-0	0	0
Burus	0	0-0	0	0
Ballard	4	0-2	1	10
Brown	0	0-3	1	3
Totals	21	11-10	11	69

### Lutes Hot

On field goals the Lutes hit an amazing 55.4%, while the Loggers bucketed a respectable 38% of the attempts. Chuck Curtis was high point man with 28 points. Roger Iverson, who didn't play all the game, scored 24. From the foul line the team hit a remarkable 84%. Moseld turned in a good performance for College of Puget Sound, netting 16 points.

Marv Harshman was well pleased with his athletes; he commented that it was a fine team performance and also cited Nick Kelderman for his rebounding and defensive play. Coach Harshman still sees work ahead for the team in strengthening of the defense.

Freshman John Jacobson made six of six free shots as his contribution to the total. Another fresh, Ardeen Iverson, fouled out in the second half.

## PLC Cagers Deal Losses To Visitors

In the fourth basketball game of the season, Pacific Lutheran easily rolled over the Pacific University Badgers 69-58 on Saturday, December 8.

Wasting no time to get an early lead, the Lutes went out in front 19-9 within ten minutes, and later had a safe 24-point margin with 11 minutes left in the game. Ten of the twelve Lutes got into action, with Roger Iverson leading the PLC group with 16 points.

Pacific Lutheran's Junior Varsity squad crushed the 33rd ATS of McChord Air Force Base, 85-39, in the preliminary game. Ardeen Iverson scored 14 points for the Gladiators.

### Rangers Tumble

The Gladiators downed the St. Martin's Rangers 69-63 in a rough, tumble basketball tussle in the Lute gym on Thursday, Dec. 6.

Trailing PLC 40-26 at half time, the Rangers bounced back to outscore the Gladiators during the second 20 minutes, but the visitors were never able to come any closer than six points to the Lute score. Although the Lutherans never did show their potential, they led throughout the game, and the win was made certain when with less than a minute to play, Jim VanBeek hit a free throw, and Curtis scored a field goal to make the margin safe enough for victory.

### Iverson Hits 20 Points

High scorer of the game was Jack Day, 6'5" center for the Rangers, who made 21 points. Reliable Rog Iverson, PLC guard, finished with 20 points, and the Lutherans' center, Chuck Curtis, tallied 19.

Both squads showed fine marksmanship in that the Lutes hit 26 for 55, or 47 percent, and St. Martin's bucketed 22 of 52 for 42 percent.

Pacific Lutheran's Junior Varsity team outscored the Boys' Club, 73 to 41, in the City League preliminary of the evening with Lute Jerstad topping the PLC scoring column with 12 points.



Chuck Curtis pumping one up.

## De Jardine's Share Top With Creekers

### "A" LEAGUE STANDINGS

	Won	Lost
Clover Creek Hall	2	0
De Jardine's	2	0
Eastern Road Runners	1	0
Tacoma	1	1
OM East 3rd	1	1
Ivy Hall "A"	0	2
OM 2nd Floor Studs	0	2
OM West 3rd Gay Goofs	0	1

### "B" LEAGUE STANDINGS

	Won	Lost
4th Floor Popes	2	0
Eastern Mongrels	1	0
Prairie Dogs	1	1
OM West "B"	1	1
Faculty	1	1
2nd Floor "C's"	1	1
Western "B"	0	1
Ivy Hall "B"	0	2

The Clover Creek Hall and De-Jardine quintets appear to be off to a quick lead in the intramural basketball "A" league competition with their two won and no loss record as the results indicate up to and including December 10 games. Old Majns 4th Floor Popes are perched atop the heap in the "B" league by virtue of their second win Monday night over the Faculty by a score of 31 to 29, according to Mark Salzman, intramural director. George Hagevik's 9 counters led the Popes' scoring parade while Salzman of the Faculty was pouring in 20 markers for the losers.

In other games Monday night the 12-point effort of Russel Hause led the 3rd Floor East team to a 27 to 26 victory over the 2nd Floor Studs. Wayne Johnston's 10 points were high for the losers. League leading De Jardine's proved too much for the Tacoma five as Duane Moe racked up 21 counters to lead his team to a lopsided 46 to 22 win. Gerry Redburg's seven points were high for the Tacoma quint.

### ART'S SHOE SHOP

QUALITY SCHOOL SHOES  
REPAIRING  
GARFIELD STREET

# Time Out

Long-time Fan

by Ted Slek

A large percentage of students and friends of Pacific Lutheran attend all home basketball games; a smaller portion of these will follow the team across town to CPS and there are those who will travel long distances to games. Finally there is an inner circle of followers who would not, if possible, miss a single athletic contest involving the Lutes. Such persons are more than just fans, they are patrons of athletics at PLC. One of the most outstanding Lute followers is Dr. J. P. Pflueger, professor of religion and philosophy. Dr. Pflueger has watched this college's teams for 27 years and is still thrilled to see the Lutes win one.

Shortly after his coming here, Dr. Pflueger volunteered his services as a trainer to coach Clifford Olson. Having a considerable amount of medical training, "Doc," as he was familiarly called, proved very valuable to the team in this capacity. He knew how to tape minor injuries so as to prevent further injury. "I put bones on the outside of the ankle," he remarked. "We never had any real serious accidents in football," Doc recalled. "The most severe ones happened in practice. A fellow named Knudson was knocked cold on his feet and his punch drunk condition passed unnoticed by us all day." In those days Pacific Lutheran played high school and junior college teams. In the years 1939 to 1941, Doc Pflueger was trainer for reputedly the finest assemblage of athletes ever to represent PLC. In 1941 the Lutes beat the University of Washington 40 to 30 in basketball.

### Rates Gonzaga Game Thriller

The long-time fan rates PLC's last-minute victory over Gonzaga in 1939 before 10,000 people in Tacoma as the most thrilling game he's seen. Guess who kicked a 29-yard field goal with only 15 seconds to go, giving PLC 16 points, Gonzaga 13. (See end of column for game hero).

Football, with all its pageantry, crowds and drama is Doc's favorite spectator sport although he said that watching basketball is often more pleasant owing to weather conditions in this area. If you want to know what players down through the years stand out most in Doc Pflueger's memory, here they are: Earl Platt, Marv Tommervik, Marv Harshman, Sigurd Sigurdson, Earl Ingvaldson, Dutch Bow, John Fadness, and of the more recent ones, Don D'Andrea, Rick Daniels, Lowell Knutson, Glen Huffman, Frank Karwoski and Olle Magnuson. Doc was impressed by the basketball stars Harry McLaughlin and Gene Lundgaard and also added that Marv Harshman was a tremendous basketball player.

As you might suppose, Dr. Pflueger had his hey-day in athletics, at one time playing for Capitol University. Basketball and tennis were his best sports; in track he ran the 440 and low hurdles. Since baseball conflicted with tennis, he didn't play baseball in college. Doc thought that unless he were pitcher or catcher, baseball wasn't an active enough sport for him.

Doc Pflueger says he always enjoys PLC-CPS meetings for the keen and all-out competition which can be expected. He doesn't think the Loggers, or for that matter St. Martin's, use an orthodox style of play, that their floorwork is more individual than team effort.

Although he has always been an enthusiastic spectator, Doc explained that now, considering his health, he must discipline himself not to get excited. His philosophy on refereeing is interesting. "The officials make mistakes, and I see no reason why the crowd should be discouraged from expressing approval or disapproval of a call. Referees are paid and should expect some censure from the spectators." Doc was especially complimentary of the Central game officials, Heinrich and Angeline. Doctor Pflueger hopes to see all the home basketball games this year. As much as anyone, he wants the Lutes to successfully defend their Evergreen Conference championship.

Marv Harshman kicked the field goal mentioned above.

It happened in 1931: The PLC women's basketball team trounced the Telephone Company, 20-14.

### 3-IN-1 TO BETTER SERVE YOU

Standard Heating Oils - Heating Equipment  
Heating Service

Enjoy That "PLUS" Service

MARV TOMMERVIK'S

## PARKLAND FUEL OIL SERVICE

120TH & PACIFIC AVENUE

PHONE GR. 8684



## SWEATERS . . . for guys and gals!



# Christmas Program Broadcast Live

by Rolly Opsahl

Sometimes it happens that the work of efficient and smoothly working groups slides by unnoticed by a majority of people.

Anyone who has seen the PLC Christmas Program would probably say, "Yes, everything was real smooth—period." There are a number of preliminary chapters, however.

## Live Broadcast

For the past eight years, the Christmas Program has been broadcast live and direct from the school over radio station KTAC, Tacoma. This in itself causes a great deal of work in script writing and preparation, timing and other various details of production. Complicating the presentation of the Christmas Program is effective staging for the Choir, Chorus and instrumentalists—including placement and distribution on the stage and lighting—all for the best possible musical effect.

All engineering details are taken care of by PLC students. KTAC furnishes only the announcer for commercials and station breaks (which the auditorium audience never hears). Chief engineer for this year's production will be Eric Jordahl. He will be assisted by other students from the college.

Weeks of the KTAC staff, was unable to get to PLC last year because of snow and ice. Dave Wold, ASPLC president of 1955-56, read the commercials, etc., thus making it a complete intra-PLC program.

## Speech Faculty Assists

The narration that the audience does hear is that of Mr. Theodore Karl, director of the Department of Speech. He prepares all copy material for the hour and a half program.

# 'Carol' (continued)

(Continued from page one)

ghost, Don Cornell; Ghost of Christmas Past, Harold Christianson; Ghost of Christmas Present, Bill Hantz; Ghost of Christmas Yet to Come, Rolly Opsahl; Scrooge as a youth, Tom Reeves; Scrooge's girl friend, Janet Turman; Mrs. Cratchit, Jane Ross; Cratchit's daughters, Ruth Duval and Arlene Halvor; Fred's guests, Joe Danielson and Marie Everette. Tiny Tim will be played by little Drew Thompson this year.

Rod Kastelle is the story narrator between scenes of the play. Directors of "The Christmas Carol" are Wayne Olsen, Terry Lindsey, and Rod Kastelle. Their assistants are Janet Turman, Karen Knutzen and Patti Redakow.

Jon Soine is the technician for the play. Working under him on the stage crew are Reuben Lahti, Bob Mortenson, George Olsen, Richard Rahn, and Tom Rorsrud. Bruce Mesford is on the stage props committee. Working under Eric Jordahl, electrician, on the light crew are Arlene Halvor, Carl Muhr, Ron Talley and Jane Ross. Jeri Duval and Neil Munson are working on the programs and publicity committees, respectively.

**C. O. Lynn Co.**  
MORTUARY  
717 TACOMA AVE. Phone MAIN 7745

gram. Mr. Karl is also the producer. Mr. Stanley Elberson, instructor in the Speech Department, has made the preparatory arrangements for this year's radio broadcast. The live show will be given at 3:30 this Sunday afternoon. This show will be recorded and re-broadcast on Christmas Eve.

But the Christmas Program is more than a radio show. Mr. Eric Nordholm, also of the Speech Department, is the man who sees that people who come to see as well as hear the program are well satisfied. Nordholm is responsible for staging and lighting effects employed in the program. He and his fast silent, hard-working crew build the stages that hold the 150 people of the combined musical groups.

## North Hall Plans Party For Orphans

Twenty-six children from the Parkland Orphanage in Everett will be guests of North Hall at a Christmas party tomorrow at 11:30 a.m. in the main lounge. The children range in age from 7 to 13 years.

Mr. C. K. Malmn will give a chalk talk, and the Eighth Notes will sing, according to co-chairman Janet Chesley and Barbara Johnson. Popcorn balls will be served, and each child will be given a gift, an orange, and a candy cane.

First floor is taking care of decorations; co-chairmen are Joanne Apker and Jan Snyder. Second floor is in charge of gifts and Vicki Fischer and Barbara Standard are co-chairmen. Third floor is serving refreshments, with Charlotte Johnstone and Paula Tranum in charge. Twelve boys will help with the party.

# Conference Slated After Christmas

All Christians believe in "one holy, catholic and apostolic church. This credo is the basis on which an estimated 300 college students will meet here from dinner on December 27 through breakfast on December 31. During this time PLC will be host to a significant ecumenical conference, the first of its kind in the Northwest, with guests from 14 national student Christian organizations on 69 campuses in Washington, Oregon, Idaho and Montana.

Conferees at the United Student Christian Council study conference will study their united witness in the college and university under the theme: You, God and "U". Outstanding leaders such as Dr. John Oliver Nelson of Yale University, and the author, Denis Daly, will participate.

All interested students are invited to attend. Registration is unlimited, but must be completed before December 20. The Student Congregation will pay half the registration fee of four delegates who will be selected by the Board of Deacons.

## PARKLAND GRILL

19c BURGERS

Monday through Saturday  
7:30 a.m. to 7:30 p.m.

SHORT ORDERS — DINNERS

Phone Granite 9937

PERMANENTS THAT SATISFY  
HAIR CUTTING AND STYLING

## Charm Beauty Salon

Blanche Lingblom

413 GARFIELD ST. GR. 7475

FORMICA — PAINT — PLUMBING — ROOFING — ELECTRIC  
VENETIAN BLINDS — WINDOW SHADES

## KREGER'S HARDWARE

Glass Installation — Pipe Cutting and Threading

121st and Pacific Avenue Phone GR. 3171

FOR THE HAIRCUT YOU LIKE . . .

## GERRY'S BARBER SHOP

"WE SPECIALIZE IN FLAT-TOPS"

Located in IGA Foodtown

112th & Pacific Avenue Phone GR. 3434

# Paragon PRINTERS, Inc.

Printing and Lithographing

A COMPLETE MODERN PRINTING PLANT IN TACOMA'S  
FASTEST GROWING COMMUNITY (PARKLAND)

Printers of your campus newspaper—"The Mooring Mast"

11802 Pacific Avenue GRanite 7100

## SEASON'S GREETINGS

Come in and see  
our Scandinavian gifts  
and decorations for  
Christmas



Youngs Gift Shop

# Minutes of Student Council, Dec. 12 . . .

December 12, 1956

After Rich Schwindt led in prayer, Merle Hanson called the meeting of the Student Council to order. Roll call was taken and the minutes were read and approved.

Karl Forsell announced that the Campus Chest All-School Auction has been planned for February 8. The committee is working on the details of the auction. Dean Libner and Keith Hoefft are co-chairmen of the event.

President Hanson announced that 246 students voted on the amendment. The result being: 244 in favor of the amendment and 2 against.

Hanson stated that he had been contacted by Mrs. Gray concerning a community collection for Hungarian relief. Mrs. Gray wondered if the students would help in such a collection. The community canvas was to take place before Christmas. It was decided that Merle should notify Mrs. Gray that it would be impossible for us to do anything before Christmas, but that we will do what we can after the holidays. A penny pitch or a game was suggested. Such an event would be a part of the Campus Chest. The date for the penny pitch was tentatively set for January 12.

Karl Forsell moved that the meeting be adjourned. The motion was seconded and carried.

Respectfully submitted,

HELEN JORDANGER, Secretary.

## LITTLE MAN ON CAMPUS

by Biefler



"You hate me now, but think of the fun you'll have telling new students I teach a snap course."

## IGA FOODTOWN

Complete Shopping Center

112TH STREET (Airport Road) AND PARK AVENUE

## PACIFIC LUTHERAN SEMINARY

THEOLOGICAL

CHARLES B. FOELSCH, Ph.D., President — Berkeley 8, California

PREPARES ABLE MINISTERS FOR TOMORROW'S WORLD — THE BIGGEST OPPORTUNITY FOR REAL MEN TODAY IS THE CHRISTIAN MINISTRY  
Is God Calling YOU?

The 6th Academic Year (undergraduate) begins September 4, 1957  
APPLICATION FORM, CATALOG, ETC., ON REQUEST

We remember to save for you  
ask about

## automatic savings

RALPH HUBBARD, Mgr., 84th & Pacific Branch

# PUGET SOUND NATIONAL BANK

MAIN OFFICE • LINCOLN • K STREET • LAKEWOOD  
84TH AND PACIFIC

Member Federal Deposit Insurance Corporation • Federal Reserve System