

# Scene

Fall 2012 • Pacific Lutheran University

What's  
he like?

PAGE 14



# calendar



Graduate Rose Ann Ramos '12, celebrates on May 29 at the Tacoma Dome with her family and friends.

## AUGUST

### August 2, 7 p.m.

Jazz Under the Stars  
David Deacon-Joyner, pianist  
Mary Baker Russell Amphitheater

### August 8, 11:30 a.m.

Peach Festival, Red Square

### August 9, 7 p.m.

Jazz Under the Stars  
Neil Andersson and Malibu Manouche  
Mary Baker Russell Amphitheater

### August 16, 7 p.m.

Jazz Under the Stars  
Tribute to Bill Ramsay Big Band  
Mary Baker Russell Amphitheater

### August 24, 7 p.m.

PLU Night at the Rainiers  
Cheney Stadium, Tacoma

### August 30 – September 3

New Student Orientation

## SEPTEMBER

### September 4, 9 – 10:30 a.m.

Inauguration and Fall Convocation  
Olson Auditorium

### September 9, 3 p.m.

Richard D. Moe Organ Recital Series:  
Paul Tegels, University Organist  
Lagerquist Concert Hall

### September 13, 7:30 p.m.

Common Reading Program presents  
Luis Alberto Urrea, author  
Lagerquist Concert Hall

### September 14, 2 p.m.

Psychology Colloquium: Alice Eagly,  
Northwestern University  
Nordquist Lecture Hall

### September 17, 8 p.m.

Buchanan, Stephens & Bowman Concert  
Lagerquist Concert Hall

### September 20

Lutheran Studies Conference:  
"Lutheran Perspectives on Political Life"  
Locations across campus

### September 25, 8 p.m.

Inauguration Faculty Concert  
Lagerquist Concert Hall

### September 26, 7 p.m.

Teatro Milagro presents: B'aktun 13  
Anderson University Center

### September 27, 8 p.m.

Regency Jazz Ensemble  
Lagerquist Concert Hall

### September 28 – 30

Homecoming Weekend

### September 30, 8 p.m.

Lyric Brass Quintet  
Lagerquist Concert Hall

## OCTOBER

### October 4, 8 p.m.

University Jazz Ensemble  
Anderson University Center

### October 5, 8 p.m.

French Music for Horn  
Lagerquist Concert Hall

### October 6, 5:30 p.m.

Erik Steighner, Saxophone  
Lagerquist Concert Hall

### October 7, 3 p.m.

Organ Recital Series: Charles Rus  
Lagerquist Concert Hall

### October 9, 8 p.m.

University Symphony Orchestra  
Lagerquist Concert Hall

### October 11, 8 p.m.

José A. Zayas Cabán, Saxophone  
Lagerquist Concert Hall

### October 12, 10:30 a.m. – 12:30 p.m.

L.I.F.E. Class: Sid Olufs discusses the  
presidential election  
Garfield Book Company

### October 13, 8 a.m. – 7:30 p.m.

Orchestra Invitational  
Lagerquist Concert Hall

### October 14, 3 p.m.

University Wind Ensemble  
Lagerquist Concert Hall

### October 15, 7:30 p.m.

Seventh annual Dale E. Benson Lecture in  
Business and Economic History  
Scandinavian Cultural Center

### October 16 & 17, 8 p.m.

Fall Choral Concert I & II  
Lagerquist Concert Hall

### October 23, 8 p.m.

Camas Wind Quintet  
Lagerquist Concert Hall

### October 24, 7:30 p.m.

David and Marilyn Knutson Religion Lecture  
Lagerquist Concert Hall

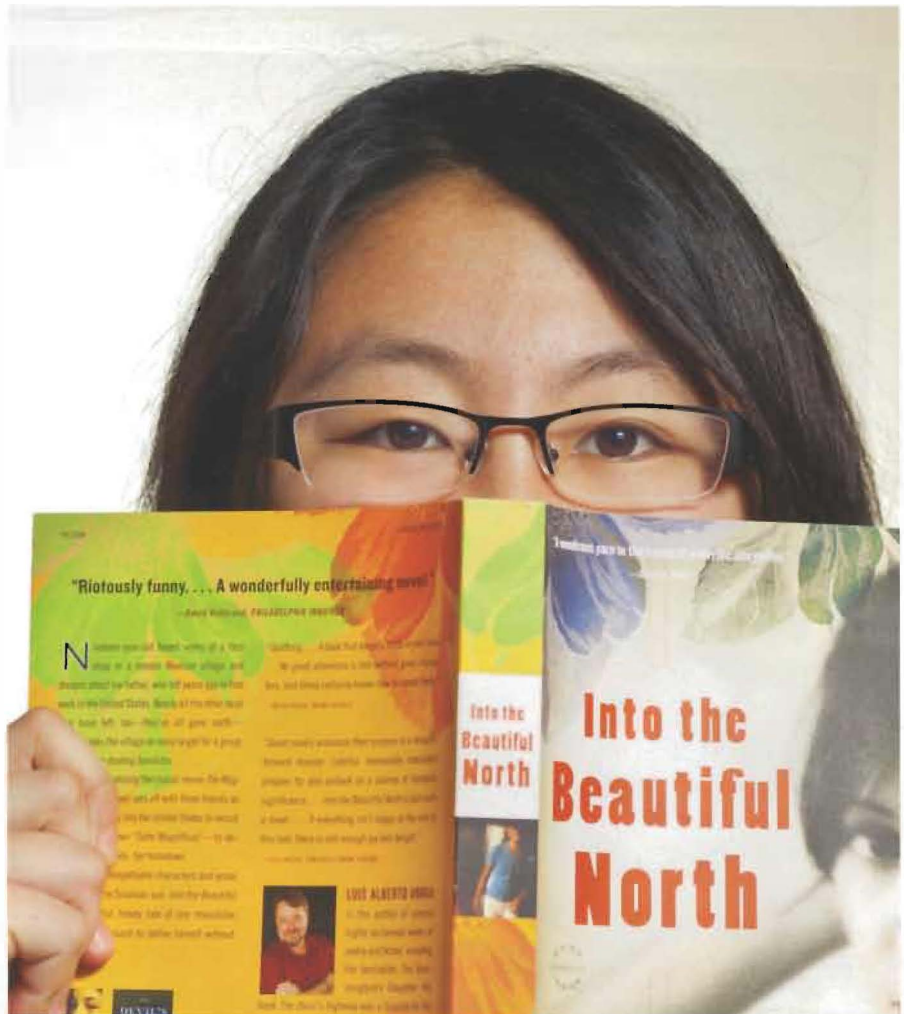
### October 28, 3 p.m.

Early and Baroque Concert  
Lagerquist Concert Hall [S](#)

# inside

Pacific Lutheran University Scene Fall 2012 Volume 43 Issue 1

- 4 **Here & Now**
- 8 **Life of the Mind**
- 10 **Engage the World**  
Campaign surpasses goal by \$22 million
- 14 **COVER STORY:**  
**What's He Like?**  
Get to know PLU's 13th president, Thomas W. Krise
- 20 **In Their Own Words**  
Six 2012 graduates reflect on their time at PLU
- 24 **Attaway Lutes**  
2012 Hall of Fame inductees
- 26 **Alumni News & Events**
- 31 **Alumni Profile**
- 32 **Alumni Class Notes**
- 40 **One-on-One**



Starre Helm '12, an English major who helped select the book used by the Common Reading Program, says "Into the Beautiful North" is an easy, and interesting, way for students to become acclimated to the intellectual rigor associated with classes at PLU. Story on page 8. (Photo by John Froschauer)

## Scene

**EXECUTIVE EDITOR**  
Greg Brewis

**EDITOR**  
Steve Hansen

**MANAGING EDITOR**  
Barbara Clements

**WRITERS**  
Chris Albert  
Barbara Clements  
Katie Scaff '13  
Nick Dawson

**PHOTOGRAPHER**  
John Froschauer

**ART DIRECTOR**  
Simon Sung

**ONLINE MANAGER**  
Toby Beal

**CLASS NOTES**  
Adrienne Jamieson '09

**EDITORIAL OFFICES**  
Neeb Center  
Building #207  
253-535-8410  
[scene@plu.edu](mailto:scene@plu.edu)  
[www.plu.edu/scene](http://www.plu.edu/scene)

**PLU OFFICERS**  
Thomas W. Krise  
*President*

Steven P. Starkovich  
*Provost and Dean of Graduate Studies*

Laura F. Majovski  
*Vice President, Student Life and Dean of Students*

Karl Stumo  
*Vice President, Admission and Enrollment Services*

Steve Olson  
*Vice President, Development and University Relations*

Sheri J. Tonn  
*Vice President, Finance and Operations*

**OFFICE OF ALUMNI AND CONSTITUENT RELATIONS**  
Lauralee Hagen '75, '78  
*Executive Director*

Jessica Pagel '08  
*Assistant Director*

Michelle Story '09  
*Volunteer and Outreach Coordinator*

Kim Kennedy Tucker  
*Assistant to the Director*

G. Lee Kluth '69  
*Director, Congregation Relations*

Nesvig Alumni Center  
Tacoma, WA 98447-0003  
253-535-7415  
800-ALUM-PLU  
[www.plualumni.org](http://www.plualumni.org)

**ADDRESS CHANGES**  
Please direct any address changes to [alumni@plu.edu](mailto:alumni@plu.edu) or 800-ALUM-PLU

**ON THE COVER**  
Thomas W. Krise, PLU's 13th president. Photo by John Froschauer.

 Scene is printed on 10 percent post-consumer recycled paper using soy-based sustainable inks. The paper was manufactured at a Forest Stewardship Council-certified plant.

**Volume 43, Issue 1**  
Scene (SSN 0886-3369) is published three times a year by Pacific Lutheran University, S. 121st and Park Ave., Tacoma, WA, 98447-0003. Postage paid at Tacoma, WA, and additional mailing offices. Address service requested. Postmaster: Send changes to Development Operations, Office of Development, PLU, Tacoma, WA, 98447-0003, [deveops@plu.edu](mailto:deveops@plu.edu). © 2012 by Pacific Lutheran University



# here & now



## LUTE SOFTBALL WINS NATIONAL TITLE

It was Stacey Hagensen's moment to shine, and the senior pitcher who had carried PLU to the NCAA Division III Softball Championship title game on a Monday afternoon in May shone as bright as the sun in the Virginia sky.

Hagensen, named the tournament's Most Outstanding Player, shut out PLU's Northwest Conference rival Linfield for the second time this season, limiting the Wildcats to just three hits as PLU won its first-ever NCAA Division III softball championship with a 3-0 win in Salem, Virginia. (PLU softball won National Association of Intercollegiate Athletics - NAIA - crowns in 1988 and 1992.)

The Lutes finished the season with a 45-11 record.

Along the way to the national title, PLU defeated Luther (Iowa) 8-0 in five innings, Linfield 5-3, Montclair State 2-1 in 12 innings, and Linfield again 3-0. Hagensen pitched all 31 innings at the Division III Softball Championship and had a 0.68 earned run average, limiting her opponents to three earned runs on 21 hits with 16 strikeouts and one walk.

In PLU's perfect eight-game run through the regional and national tournaments, Hagensen pitched all 58 innings with a 0.60 earned run average, allowing 40 hits, striking out 37 and walking just three.

Three other Lutes were honored as all-tournament picks: outfielder Montessa Califano '13, infielder Amanda Hall '13, and infielder Haley Harshaw '13.

In addition to being the tournament's Most Outstanding Player, Hagensen was also named the Honda Sports Award Division III Player of the Year, recognizing her as the top Division III female athlete.

Head coach Erin Van Nostrand and assistant coaches Greg Seeley, Tiffany McVay, Dena Harkovitch and Dena Slye were also honored. They were named Division III National Coaching Staff of the Year by the National Fastpitch Coaches Association (NFCA).



PLU's four Fulbright recipients for 2012: Carolyn Hylander, Caitlin Walton, Mycal Ford and Gretchen Elyse Nagel.

## Fulbright total reaches 91

**W**hen it comes to amassing prestigious international fellowships, PLU keeps adding to an already impressive total. This year, four PLU students increased the number of student U. S. Fulbright recipients since 1975 to 91.

Sponsored by the U.S. Department of State, the Fulbright program was established in 1946 by the U.S. Congress to "enable the government of the United States to increase mutual understanding between people of the United States and the people of other countries."

This year, all four 2012 graduates – Carolyn Hylander, Caitlin Walton, Gretchen Elyse Nagel and Mycal Ford – received prestigious Fulbright English Teaching Assistant positions, which allows the recipients to spend half their time teaching English, and the other half taking part in community service or research.

It is fair to say that Gretchen Elyse Nagel speaks for the group when she anticipates her upcoming experience: "Receiving a Fulbright is an unbelievable opportunity and it will open doors I haven't even considered yet, nor imagined. I look forward to the growth it will bring on personal and professional levels through fresh perspectives, learning curves and losing my comfort zone."

**Carolyn Hylander**, a double major in Hispanic studies and global studies from Seattle, will split her time teaching English at the Universidad de Ibagué in Ibagué, Colombia, and researching

U.S.-Colombia free trade policies.

**Caitlin Walton**, from Colorado Springs, Colo., received a bachelor of arts in elementary education. She will be teaching English in Malaysia, as well as working to engage the community through different activities, workshops and games.

**Gretchen Elyse Nagel**, from Portland, Ore., majored in German and will be teaching English in Baden-Württemberg, Germany. In addition, she'll work on after school activities to encourage community involvement and mutual understanding.

**Mycal Ford**, from Tukwila, Wash., double-majored in Chinese studies and political science. He has accepted a teaching assistantship in Kaosiung, Taiwan, and as part of a service project,

he will be teaching hip-hop choreography.

## Inauguration festivities set to begin Sept. 4

**T**o celebrate the installation of PLU's 13th president, Thomas W. Krise, numerous public events are being planned in September, beginning with the opening convocation and inauguration ceremony, set for 8:45 a.m. on Tuesday, Sept. 4 in Olson Auditorium. The entire PLU community, including alumni and friends, are invited to the event.

A Spirit Weekend celebration honoring President Krise will take place

*continued on next page*

One of the greatest joys of the PLU experience is the relationships established during your time spent around campus! Connect with Homecoming and reconnect with those who were an important part of your PLU experience. Whether they are roommates, classmates, teammates, faculty, staff or administrators, plan to connect again at Homecoming 2012!

The classes of 1962, 1972, 1977, 1987, 1992, 2002 and PLU Graduates Of the Last Decade will all have special reunion activities. We invite the alumni of these class years to connect in a special way this year in celebration of their significant anniversaries.

**For complete details, including times, locations and prices, as well as to register for Homecoming, please visit: [www.plu.edu/homecoming](http://www.plu.edu/homecoming)**

You may register online or by calling the Office of Alumni and Constituent Relations at 800.ALUM.PLU or 253.535.7415.

## here & now

continued

Saturday, Sept. 8, in conjunction with the PLU vs. California Lutheran football game.

Two noted speakers will come to PLU as part of the inauguration festivities. Luis Alberto Urrea, author of "Into the Beautiful North," will be on campus on Sept. 13 at 7:30 p.m. to discuss his novel that was the focus of PLU's Common Reading Program this year. Larry Rasmussen, professor emeritus of social ethics at Union Theological Seminary, will be the keynote speaker at the Lutheran Studies Conference on Sept. 20 at 7 p.m.

A local community service project in recognition of the inauguration will occur on Sept. 22. A special concert performance in honor of the new president will take place in Lagerquist Concert Hall on Sept. 25. The All Alumni Homecoming Soiree at the Hotel Murano on Sept. 29 will close the month-long inaugural celebration.

For more information on the inauguration, visit [plu.edu/inauguration](http://plu.edu/inauguration).

### Foege receives Medal of Freedom

**W**illiam Foege '57 was named as one of 13 recipients this year of the Presidential Medal of Freedom, the nation's highest civilian award.

The medal is awarded to individuals who have made especially meritorious contributions to the security or national interests of the United States, to world peace, or to cultural or other significant public or private endeavors.



President Barack Obama presents the Presidential Medal of Freedom to William Foege during a ceremony at the White House on May 29. (Official White House Photo by Chuck Kennedy.)

Foege, 76, a physician and epidemiologist, helped lead the successful campaign to eradicate smallpox in the 1970s. He was appointed director of the Centers for Disease Control and Prevention in 1977 and, with colleagues, founded the Task Force for Child Survival in 1984.

Foege became executive director of The Carter Center in 1986 and continues to serve the organization as a senior fellow. He has served on the PLU board of regents and received an honorary doctorate from PLU in 2000. He also helped shape the global health work of the Bill and Melinda Gates Foundation, and remains a champion of a wide array of issues, including child survival and development, injury prevention, and preventative medicine.

### 680 graduates – and Loren Anderson – begin life after PLU

**I**n his last address as the president of Pacific Lutheran University, Loren J. Anderson told the 680 assembled master's and bachelor's graduates on May 29 to practice the attitude of gratitude, courage and wonder.

Counting himself as an honorary Class of 2012 graduate, Anderson acknowledged that stepping out beyond the "Lutedome" can be an unsettling and anxious time. He encouraged the assembled graduates, along with the thousands of family members who packed the Tacoma Dome, to view life with gratitude,

## RETIRING FACULTY



Ann Kelleher  
Political Science  
(regular retiree)



Paula Leitz  
Instructional  
Development &  
Leadership  
(phased retiree)



Dennis Martin  
English  
(regular retiree)



Chris Ferguson  
Information &  
Technology Services  
(regular retiree)

“which will make sense of our past, bring peace for today and create a vision for tomorrow.” He reminded the graduates that they have all been nurtured and loved by a village “that cares for you deeply and to whom you matter greatly.”

Anderson retired as president on May 31 after 20 years of service to PLU.

## Zylstra to lead PLU’s Center for Community Engagement and Service

**J**oel Zylstra ’05 has been appointed PLU’s new director of The Center for Community Engagement and Service, which operates under the Career Connections department. His job is to connect PLU to the community, be it through working with faculty to support service-learning in a class, or talking with community leaders about opportunities and concerns in Tacoma or Parkland, and then deciding how PLU might be involved in the project.


*PLU’s mission is about reaching out, getting involved and making a difference for individuals in the nearby*

*Tacoma and Parkland community.*

The way Zylstra sees it, PLU’s mission is all about reaching out, getting involved and making a difference for individuals in the nearby Tacoma and Parkland community.

“The community really is a classroom for the students,” Zylstra said. “And the campus is an invaluable resource for the community.”

Eventually, Zylstra would like to see PLU known as much for its involvement in the local community as it is now known for its nationally recognized study-away programs.

“Community service is great for resume building, no doubt,” he added. “But it’s also part of PLU’s mission revolving around what it means to be a citizen, what it means to be a good neighbor, and our individual and collective responsibility to participate in our community.” 



Joel Zylstra, PLU’s new director of The Center for Community Engagement and Service, at James Sales Elementary School, one of three schools where he is developing a mentoring program.

## ACCOLADES



**Jason Skipper**, associate professor of English, was featured as 2012 festival author at the annual Get Lit! festival at Eastern

Washington University in Spokane. The event took place April 9-15, 2012. Skipper just released his first novel, “Hustle.”

**Nathalie op de Beeck**, associate professor of English, received the Children’s Literature Association Book Award for “Suspended Animation: Children’s Picture Books and the Fairy Tale of Modernity” (University of Minnesota Press).

**Jessica Sklar**, associate professor of math, edited the volume “Mathematics in Popular Culture:

Essays on Appearances in Film, Fiction, Games, Television and Other Media” (McFarland Press).

**David Wolff**, associate professor of computer science and computer engineering, published “OpenGL 4.0 Shading Language Cookbook” (Packt Publishing).



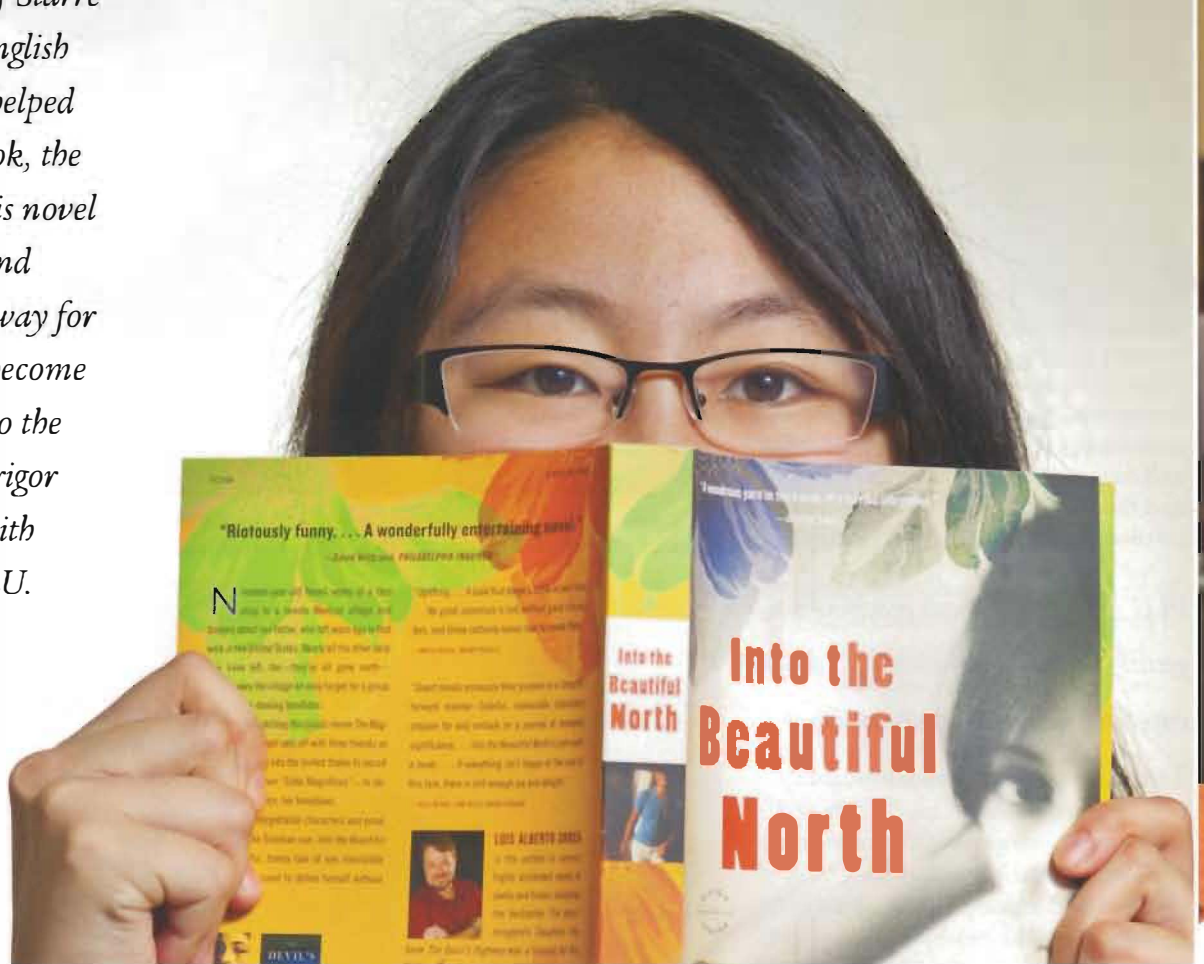
**Richard Nance**, professor of music and director of choral activities, has been invited along with the Choir of the West

to perform at the 2013 national meeting of the American Choral Directors Association in Dallas. The event takes place March 13-16.

# life of the mind

The one book everyone at PLU is reading this summer

*In the eyes of Starre Helm, an English major who helped select the book, the arrival of this novel is an easy, and interesting, way for students to become acclimated to the intellectual rigor associated with classes at PLU.*



**W**hen first-year students showed-up to campus this June for the class registration sessions called Charting Your Course, they left with more than course catalogs and paperwork associated with their newly registered classes.

They also left with the novel “Into the Beautiful North,” by Luis Alberto Urrea, and a series of study questions associated with the book.

*Homework already?!!*

Not really. But every incoming student is being asked to read the novel as part of an innovative new program at PLU.

In the eyes of Starre Helm ’12, an English major who helped select the book, the arrival of this novel is an easy, and interesting, way for students to become acclimated to the intellectual rigor associated with classes at PLU.

Helm was part of a small pilot reading program during orientation when she was a first-year student. She loved it. She also remembers what happened to her when she was in her first class a few days later.

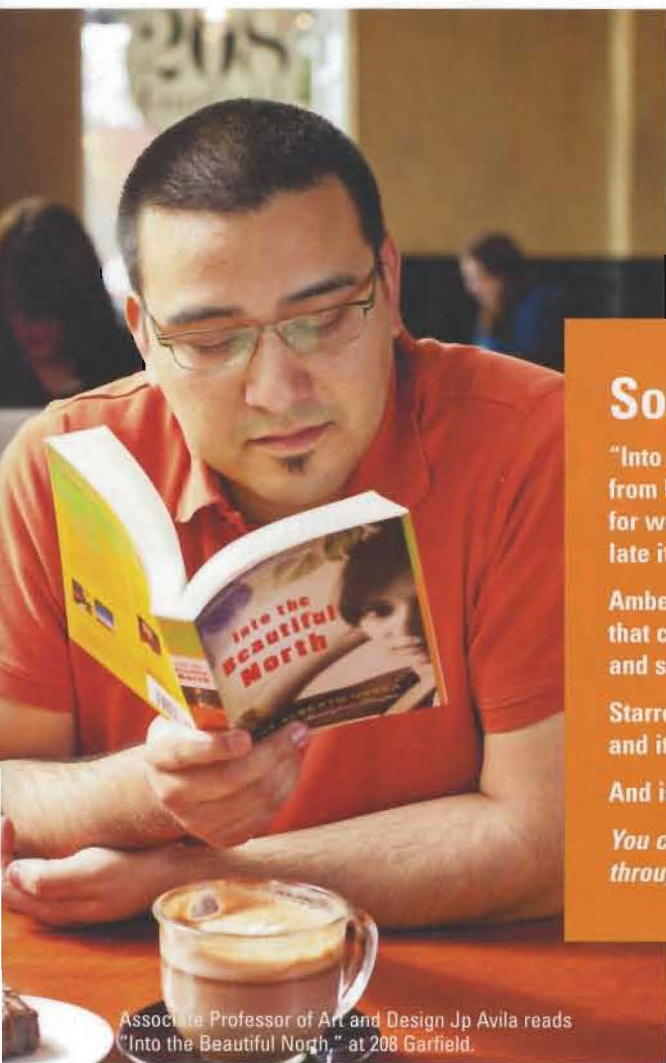
“The prof asked the first question about something we read, and I remember thinking to myself, ‘Oh my gosh! I would have never thought of that!’ I

freaked-out a little bit – this was not like high school,” she said.

“But I could start feeling my brain shift gears, thanks in part to the book discussions we did during orientation,” Helm continued. “I relaxed, and soon the class wasn’t nearly as scary and intimidating.”

That is exactly the point, said Amber Baillon, associate director of student involvement and leadership, and co-director of the Common Reading Program. She sees the program as a great – and fun – way for students to encounter college expectations, even before school starts.





Associate Professor of Art and Design Jp Avila reads "Into the Beautiful North," at 208 Garfield.

are also encouraged to pick up the book. The goal is to have as many people as possible read the novel by September orientation, ensuring that nearly everyone has at least one shared experience with the incoming class of 2016.

During orientation, faculty and staff will be taking part in a panel discussion of the book, as well as leading small-group discussions with other PLU students. Additionally, the author himself, Luis Alberto Urrea, will be coming to campus on Sept. 13 to discuss his novel.

According to Baillon, these events – including the author reading – are about having a

ticularly works that address Mexican-American history and experience.

Students in her course – after reading about several controversial banning cases around race and sexual orientation – will take up Urrea's book in the context of the Tucson School Board's decision to remove his works and many others, including Shakespeare's "The Tempest," from the high school curriculum for fear that they would provoke ethnic pride and separatism.

She stresses that beyond the story and relatability of the characters, it is important to think about the book in terms of current discourse and legislation about immigration and Americanization, discourse that can be

## So, is the book any good?

"Into the Beautiful North" by Luis Alberto Urrea is the story of a 19-year-old woman from Mexico who, after realizing that all the men have left her small village looking for work, heads north to recruit seven men who will return to the village to repopulate it and help defend it from gangsters.

Amber Baillon said the novel was selected because it is a very accessible novel that can be read through many different lenses. It touches on issues of race, gender and sexual orientation, as well as contemporary political and economic issues.

Starre Helm '12, who helped pick the book, has a simpler description. "It is funny and it is serious. It is really easy to get sucked in."

And isn't that what summer reading is all about?

You can purchase your own copy of "Into the Beautiful North" by Luis Alberto Urrea through Garfield Book Company at [www.gbc.com](http://www.gbc.com).

common starting point where everyone (faculty included!) can begin to talk about their lives, their own identity, and the many different lenses through which we perceive life.

"Students who make connections with faculty and staff outside of normal class time and who make intellectual interests part of their social life with peers are usually going to be more successful," said Levy.

Some professors are also integrating the book into their curriculum. Lisa Marcus, associate professor of English, plans to teach the book in her Writing 101 seminar on "Banned Books." She wants students to recognize that Urrea's book has been banned in Arizona as part of a push to suppress ethnic studies, par-

ugly, ideological and censorious. While such topics may be weighty for first-year students, she believes that bringing these topics to the classroom in a student's first semester in college is crucial to fostering critical thinking, an important goal of the First-Year Experience Program.

For Helm, as she looks back on the pilot project in which she participated, she knows it was absolutely the right way to start her college education. She's glad others – an entire cohort of students – can now do the same.

"Was there a better way to start college?" Helm asks. She doesn't think so. "I knew from the moment I got my book, PLU was invested in my education." □

—Steve Hansen

A high-angle photograph of a group of approximately 15 people in a gymnasium. They are standing on a dark floor, many with their arms raised in celebration. In the background, there are rows of empty, light-colored folding chairs. The scene is brightly lit, and the overall atmosphere is one of joy and achievement.

# ENGAGE THE WORLD

CAMPAIGN ENDS, SURPASSES  
GOAL BY \$22 MILLION

BY GREG BREWIS

# More than 17,500 people provided generous support at all levels. These gifts are having a huge impact on campus today that will continue for generations to come.

**T**he university's most recent fundraising campaign was launched amid buoyant economic times, in October 2007. By a year later, the bubble had burst, ushering in the Great Recession and years of financial turbulence.

Still, the campaign concluded May 31, 2012, surpassing its \$100 million goal with gifts and pledges totaling \$122 million.

It raised \$10.3 million in endowment for academics and mission and \$13.7 million in endowment for student scholarships.

Capital project support totaled \$31.3 million for the renovation of academic and athletics, recreation and wellness facilities.

Annual operating support and special projects rounded out the campaign at \$23.1 million.

"The overwhelming success of the campaign during uncertain times is a tribute to the loyalty and resolve of the university's alumni and friends," said Steve Olson, vice president for development and university relations.

"Participation in the campaign was incredible," Olson said. "More than 17,500 people provided generous support at all levels. These gifts are having a huge impact on campus today that will continue for generations to come."

Volunteer leadership for "Engage the World: The Campaign for Pacific Lutheran University" was headed by PLU Regent Brad Tilden '83, CEO of Alaska Air Group. He credits Loren Anderson, former university president, for his role in setting campaign priorities and meeting campaign goals.

"President Anderson's vision and leadership quite literally transformed the university," Tilden said. "The relationships he built with alumni, regents and friends of the university, time after time, resulted in generous support both for the mission of the university and for the campaign."

"From major bequests such as the one from Karen Phillips to a new graduate's first gift to the annual fund, Loren knew that donors give from the heart when they believe in the mission. He had the unique talent to connect them to their passion for PLU," Tilden said.

## **Karen Hille Phillips Center for the Performing Arts**

The single largest gift during the campaign was a \$15 million bequest from Karen Hille Phillips. Combined with her lifetime giving of \$10 million, the bequest made her the university's largest benefactor ever.

Her gifts have supported student scholarships, the endowment and capital projects, including the renovation of Eastvold Hall which was recently renamed the Karen Hille Phillips Center for the Performing Arts.

Scheduled for completion in the fall of 2013, the center will house a remodeled Eastvold Auditorium, the new Studio Theater and the scene shop. It will be the finest performing arts center in the South Sound area.

Tower Chapel will also be renovated, and has been renamed the Ness Family Chapel. It is funded through a generous gift from Kaare and Sigrunn Ness, their children Arne Ness '69 and Cindy Ness, as well as grandson Shane Ness '99.

The Eastvold renovation project has been a decades-long effort. Hundreds of donors - including many through class reunion gifts - have contributed to the project. Fundraising continues for naming spaces and theater seats and for contributing to the Chapel Builders fund.

## **Student Scholarship Support**

Campaign support to help ensure access for all students regardless of financial need came in two forms: annual support and endowment gifts. These gifts for scholarships also enable the university to attract a diverse group of students and enrich the PLU experience for all.

More than 370 people gave at least \$1,000 of unrestricted support annually for at least five years of the campaign. Their combined contributions amounted to more than \$3,252,544 and much of that support went to student scholarships.

In addition, a total of \$13 million was given to the campaign in endowed, named student scholarships of \$25,000 or

**NEXT PAGE**

# ENGAGE THE WORLD



## Engage the World By the Numbers (in millions)

**Endowment  
(Ensuring Student Access):  
\$13.7 million**

**General Campaign:  
\$1.1 million**

**Operating Support  
and Special  
Projects:  
\$23.1 million**

**Endowment  
(Academics  
and Mission):  
\$10.3 million**

**Deferred:  
\$42.6 million**

**Capital Projects:  
\$31.3 million**

**TOTAL \$122.1 million**

more. That resulted in more than \$650,000 a year available for student financial aid.

Among the hundreds of endowments established for student scholarships are these:

- A Global Scholars Grant that provides \$100,000 a year to fund study abroad for low income students. It was first established with a grant from the Bill and Melinda Gates Foundation.
- Transfer students studying business now benefit from an endowment established by Doug Saugen '79 and his wife Vicky.
- The Katherine Kandel and Elizabeth Oleksak Scholarship for the Women's Center supports student research and programming at the center.
- And Lynn (Geschwind '71) Ostenson, in memory of her late husband Richard Ostenson '71, established an endowed scholarship for African-American students studying in the natural sciences.

### Endowment for Academics and Mission

Gifts to the campaign led to the creation of four endowed chairs and an endowed professorship. These endowments help attract and retain top faculty, bring public recognition to the university and its programs by providing salary support, travel, research stipends and public programming funds.

Kurt and Pam Mayer, Joe and Gloria Mayer, Natalie Mayer-Yeager, Nancy Powell, Carol Powell Heller and Harry Heller provided major support to endow the Kurt Mayer Chair in Holocaust Studies.

Dale and Jolita Benson (both '63) established two endowed chairs, the Benson Family Chair in Business and Economic History and the Jolita Hylland Benson Chair in Elementary Education. The Bensons have also been major contributors to many campus projects and programs including endowed support for student scholarships.

An anonymous donor provided an endowment gift to fund a Chair in Lutheran Studies, first held by Professor Samuel Torvend '73.

The Svare-Toven Norwegian and Scandinavian Studies Professorship is named in honor of Trygve Svare and Audun Toven. Trygve Svare taught at PLU for more than three decades spanning the 1920s and 1940s. The late Professor of Scandinavian Studies, Audun Toven, founded PLU's Scandinavian Studies Program. The Svare family and Toven raised the funds needed to establish the professorship.

Other new endowments included a gift from Linda (Knutzen '63) Barbo and her husband, Chuck. It ensures continued funding for the university's Wild Hope Project, including faculty and staff seminars on vocation and student programs.

And a bequest from Norm Forness '58 created an endowment to be used to enhance connections between the university and alumni who live on the East Coast.



### Rieke Science Center

Funding for the renovation of the Rieke Science Center was begun during the campaign and will continue as a university priority for the immediate future. The transformed center will provide 88,500 square feet of classroom and research space for biology, chemistry, computer science, geosciences, physics and environmental studies.

Among the projects planned for Rieke that were completed during the campaign was the Louis and Lydia Sheffels Biology Laboratory. It was made possible by the support of Carol (Sheffels '58) Quigg, Jerry Sheffels '54 and the entire Sheffels family. The Sheffels family has also pledged support for a new Rieke greenhouse/laboratory that will support both teaching and research.

Early in the campaign, a nuclear magnetic resonance spectrometer was brought online in Rieke. Faculty and student researchers use it to study the bonding of atoms in a molecule to gain a better understanding of chemical compounds. Funded by the campaign and the National Science Foundation, the facility is one of the first of its kind located at a West Coast undergraduate university. Contributors included Jon '63 and Mari Kvinsland, Naomi (Roe '53) and Don '50 Nothstein, and Gene '62 and Carla '64 LeMay.

### Martin J. Neeb Center

A new home for the university's award-winning jazz and NPR news radio station, KPLU, was funded by the campaign. It was named for Martin J. Neeb who served as general manager of the station from 1981 to 2007. Martin's brother, Larry Neeb, a PLU regent, was the largest single benefactor of the building.

### Athletics, Wellness and Recreation Capital Projects

Several capital projects funded during the campaign serve the athletic, recreational, physical education and wellness needs of the campus.

Wilson Construction and the Don '74 and Kim '76 Wilson family made the lead gift to fund the construction of an all-weather, multipurpose athletic field on lower campus. Construction on the field and an adjacent new grass field will be complete in the fall.

The gymnasium floor in Olson Auditorium was resurfaced. Olson upgrades also include new bleachers, remodeled locker rooms and a new scoreboard, thanks to lead gifts from the Names Family Foundation and Allan Kollar '70 of AJ Kollar Fine Paintings, as well as many other donors.

Exercise equipment in the Names Family Fitness Center received a major upgrade as a result of a gift from James and Shirley Rippey and PLU Regent Jeff Rippey '78. It houses free weights, resistance machines and cardiovascular exercise equipment.

Additional capital investments by the university on lower campus included a resurfaced running track and new baseball bleachers. A lead gift for a synthetic baseball infield was provided by Regent Lisa (Miles '84) and Tim Kittilsby '84.

### Operating Support and Special Projects

The "Engage the World" campaign also provided support for the university's annual operating budget and for special projects.

Each year \$2.3 million in contributions to the annual fund went directly to support immediate needs on campus. That support is critical to providing Q Club scholarships to students in need, and sustaining the quality of academic programs, co-curricular activities and the full array of other operations on campus.


A number of special academic projects were also made possible with campaign support. They include \$800,000 in foundation support for a new School of Nursing outreach program in geriatric care.

And campaign support provided for activities outside the classroom. Co-curricular support included gifts for Campus Ministry, the Scandinavian Cultural Center and MediaLab. [S](#)

### Campaign Leadership Council Members

- Loren and MaryAnn Anderson
- Neal Arntson '58 and Joyce Arntson
- Linda (Knutzen) Barbo '63 and Charles Barbo
- Bruce Bjerke '72
- Robert Gomulkiewicz '83
- David Greenwood '74 and Margaret Greenwood '74
- Lisa (Miles '84) and Tim '84 Kittilsby
- Lisa Kind Korsmo '87 and John Korsmo '84
- Knut Olson '90 and Kim Morter Olson '88
- Carol Quigg '58
- Brad '83 and Danielle '85 Tilden





BY BARBARA CLEMENTS  
PHOTOS BY JOHN FROSCHAUER

# What's he like?

Details say a lot about a person, and that's certainly true when you meet Thomas W. Krise, Pacific Lutheran University's new president. First, there's the greeting. "Call me Tom."

As he works his way through a crowd, 200 strong, at the June 1 gathering to welcome him on his first day, Krise repeats that refrain again and again to those in the greeting line in the Scandinavian Cultural Center. His shiny, gold PLU-issue name badge reinforces his informal style, stating simply: "Tom Krise, President."

A few feet away, his wife, Patricia Krise, an executive at Ford Motor Company, utters a similar refrain. Her name badge: "Party Krise."

Both approach you similarly – firm handshake, friendly smile and a direct gaze that implies they are listening to everything you say.

It's this genuine interest in others that was one of the first details that Professor of Sociology and former Faculty Chair Anna Leon-Guerrero, a member of the search committee, noticed about Krise the candidate.

Leon-Guerrero said that, when speaking with a faculty member at University of the Pacific – his previous university – during the background checks, he was known for asking sincerely, "What are you working on?"

NEXT PAGE

# What's he like?

"That means a lot to the faculty," she said, "He has credibility, he has experience, he's been there. He's one of us."

He *is* one of them. Prior to his appointment at PLU, Krise was dean of the College of the Pacific at the University of the Pacific in Stockton, Calif., and chair of the department of English at the University of Central Florida in Orlando.

He's also a military man, a 1983 graduate of the U.S. Air Force Academy, serving 22 years of active duty, retiring with the rank of lieutenant colonel. Among his many accomplishments there, Krise was the founder and first director of the Air Force Humanities Institute at the academy.

Given this eclectic and wide-ranging background, it should not be surprising how vast, and expansive, his interests are. Both he and Patty are avid hikers and boaters. Krise will quickly pull you into fast-moving conversations, complete with animated hand gestures to illustrate the story and his favorite topics, such as teaching, 18th-century Caribbean literature, two years living aboard a sailboat, the value of a



liberal arts education, food and coffee. Especially coffee.

In a hobby that will certainly give him street-cred among Northwesterners, Krise buys his beans green – preferably from the Blue Mountains of Jamaica – and then roasts them with his own roaster at home.

Krise's connection to the Caribbean

began early. Born Thomas Warren Krise in San Antonio, Texas, the son and grandson of U.S. Army medical service officers, Krise spent his childhood on bases across the United States and in Germany. When his father, Edward Krise, retired from the army and academia, the family began sailing, racing and running a charter service based in

## Thomas Krise QUICK FACTS

**Career:** President, Pacific Lutheran University; Dean of the College of the Pacific at the University of the Pacific, Stockton, Calif.; Chair of the Department of English at the University of Central Florida, in Orlando, Florida. Prior to UCF, he served 22 years in the U.S. Air Force, retiring with the rank of lieutenant colonel. He worked on the faculty of the Air Force Academy in Colorado Springs, Colorado. While there, he founded and became the first director of the Air Force Humanities Institute and deputy head of the Department of English and Fine Arts at the academy. He's served as a senior military fellow of the Institute for



National Strategic Studies in Washington, D.C., and as vice director of the National Defense University Press.

**Education:** Earned his bachelor's degree in history from the United States Air Force Academy in 1983, a master of science in human resources management from Central Michigan University in 1986, a master of arts in English language and literature from the University of Minnesota in 1989, and a Ph.D. in English language and literature from the University of Chicago in 1995.

**Academic Interests:** Early Caribbean, early American, and 17th and 18th century British literature. Served as general editor of the *McNair Papers* monograph series and managing editor of *War, Literature and the Arts: An International Journal of the Humanities*. Published numerous articles and other works, including *Caribbeana: An Anthology of English Literature of the West Indies*,





**‘He has credibility, he has experience, he’s been there. He’s one of us.’**

—Anna Leon-Guerrero

the U.S. Virgin Islands. His mother, Elizabeth Bradt Krise, is an expert navigator and would navigate the boat on races and family excursions.

For nearly two years, Krise lived full time aboard a sailboat as a teenager. “I remember the boat pulling into the har-

bor, leaping onto the dock and running to the nearest library. It was a refuge in a way,” he said.

After two years of correspondence school via the University of Nebraska, Krise’s parents decided it was time for their son to get a real high school experience. They dropped him off at an apartment in St. Thomas, Virgin Islands, at the age of 14, and continued sailing, with frequent check-ins to see how their youngest was doing. Four years later, he graduated from All Saints Cathedral School in a

class of 18 graduates, most of whom still gather on Christmas Eve in an annual gathering that the Krises always try to attend. After graduation, Krise considered several routes – clergyman, teacher, lawyer. Ultimately, he took a scholarship to the U.S. Air Force Academy as a student representing the Virgin Islands. Lack of 20-20 vision ruled out being a pilot, so Krise inquired about intelligence, which in turn, resulted in his being stationed in Minot, North Dakota, in the basement of a house that served as launch station for intercontinental ballistic missiles.

“Four years, one month, and one week,” Krise dryly said of this duty, obviously not his favorite topic.

One good thing came out of Minot, however. He met his wife, Patricia Love, during an aerobics class. She was working as a sales representative in the Ford

NEXT PAGE

**1657-1777.** Lectured on six continents and is a member of the Pacific Council on International Policy and served as president of the Society of Early Americanists, founder of the Early Caribbean Society.

**Family:** Married 25 years to Patricia Krise. Parents: Edward F. Krise (deceased) and Elizabeth A. Bradt. Sister: Patricia L. Kane, occupational therapist.

**Hobbies:** Hiking, scuba diving, sailing, reading, travel, roasts his own coffee. Loves to check out local restaurants and good food in general.

**The man has skills:** Expert diver and sailor, and taught survival skills while at the U.S. Air Force Academy.

**Television and books:** Currently reading the complete works of Philip Nordquist on the histories of PLU; *Wolf Hall* by Hilary Mantel (chronicling the rise and fall of Thomas Cromwell during Henry VIII’s reign); “The Borgias” on Showtime and “Mad Men” on AMC.

**What attracted him to PLU:** “There was a spirited sense of mission here that is rare and uncommon.”

**Lutheran vs. Episcopal:** Thomas Krise is the first PLU president who is *not* Lutheran. But he sees little difference in the theology between the two denominations. He notes that the Episcopal faith is really the English version of Lutheranism. The two denominations share full communion and are very similar in their liturgy. The

Krises plan to join University Congregation and have attended an Episcopal church in Seattle, Trinity Lutheran and St. Mark’s by the Narrows in Tacoma.

**Lucky #13:** Thirteen seems to be a lucky number for the Krise family. Krise’s father, Edward F. Krise, escaped from a POW camp in Germany during WWII on April 13th, Krise’s older sister, Patricia, was born on May 13 and Thomas Krise was born in the thirteenth year of his parents’ marriage. And of course, he is the 13th president of PLU.

**Norwegian connection:** Krise’s mother, Elizabeth A. Bradt, is descended from Norwegian immigrants who came to America in the 1630s.



## What's he like?

Motor Company at the time, and has since become an executive in charge of quality control. The two will celebrate 25 years of marriage on September 5, the day after Krise's inauguration at PLU.

The Krises spent years following their respective career paths, trying to stay in the same city, or at least the same state.

In homage to his childhood in the Caribbean and his love of history, he received his Ph.D. in English language and literature from the University of Chicago in 1995. His emphasis is in 17th and 18th-century early Caribbean, early American, and 17th and 18th century British literature.

Krise returned to teaching at the U.S. Air Force Academy. There he began lobbying for a Humanities Institute, spending a year convincing skeptical military brass that humanities and the liberal arts were critical to shaping our nation's leaders.

"It's really short-sighted to focus on turning out technically trained engineers, when in fact, as an officer you're never going to be a practicing engineer," he said.

After a year of pushing and politicking, he won – and the Air Force Humanities Institute was born. That didn't mean the battle ended there. Whenever critiques were made about cadets studying literature or taking a pottery class, Krise would pull out the now-iconic picture of the hooded Abu Ghraib prisoner.

It silenced his critics. Without saying

## Patty Krise

### A dedication to service and student engagement

Focused. In a word, that would describe Patricia Krise. And friendly too.

As she sits down for coffee outside the Old Main Market, she will admit that focus is a skill that has come in handy during her last 25 years of working for the Ford Motor Company and the Nissan Motor Corporation. She plans to continue to telecommute for Ford, working on Detroit time, so late after-



noons and evenings can be left free for campus events and activities.

"My main job here is to support Tom in his role, to help in any way possible. And to reach out to students," Krise said.

She is currently working as a project manager for Ford Motor Credit. Her team looks for process improvements in Ford properties in the U.S., Canada and India. She is the early-bird of the team, often rising in the early morning to send work emails across the globe.

Prior to her current position, she was a member of the executive team that set up a 1,200-person call center in



In one way, he feels that coming to PLU, with its strong academic programs, as well as being near Joint Base Lewis-McChord, has intertwined the threads of his life.

a word, Krise made the point that leaders cannot simply be smart and battle-field savvy – they must also be culturally sensitive and humane.

With little prompting, Krise moves on to why a liberal arts education is more important today than ever for students seeking positions of leadership in the world.

This point was made when Krise, then a dean at the University of the Pacific, took a tour of the Google campus. The high-tech executives made it clear to

Krise that they troll for graduates from liberal arts schools to add to their cadre of employees.


“They very deliberately hire every possible major for their work environment,” he said.

The energy, the passion for new ideas and the sense of vocation that he saw at Google is also some of the same attributes he values personally and ones that attracted him to PLU, he said. In one way, he feels that coming to PLU, with its strong academic programs, as well as being near Joint Base Lewis-McChord has intertwined the threads of his life.

“I feel like everything in my life is coming together,” he said, adding that both his academic and leadership

credentials will be valued here.

Soon the meet-and-greets will turn to the types of things that, as he said, “keeps every college president up at night.” Until then, both he and Patty will continue to introduce themselves to the PLU community.

At one of PLU’s summer traditions – the berry festivals – the Krises step out of the Hague Administration Building, they are greeted by the warm sounds of Caribbean music from a steel drum band. Before he starts in describing the origin of the music and drums, Tom Krise just listens. And enjoys. It was an unplanned, serendipitous welcome home. 

For more on President Krise: [www.plu.edu/what-is-he-like](http://www.plu.edu/what-is-he-like)

Colorado Springs. She met her future husband, however, when she was working as a sales representative for Ford in a territory that included Minot, N.D. She noticed Thomas Krise as they exited an aerobics class at the same time.

“I’m sure it would be Pilates now, but there wasn’t much to do in Minot then,” she laughed. “I guess you could call us both exercise fanatics.”

She’s a third generation Ford employee – and yes, both Krises drive Ford Mustangs – although she stresses that after receiving her MBA from Miami University in Ohio, she really hadn’t

planned to continue the family tradition, it was just the first place she found a job. The Indianapolis native received her bachelor of arts degree in business from Hanover College in Indiana, where she played D-III volleyball and basketball.

Krise was impressed by PLU when her husband was a candidate, when she was asked over and over what she would like to do here. She was also impressed by the warmth and dedication to vocation on campus. And also the personal drive that led students to show up early in the morning to meet a presidential candidate.

“It was 8 a.m. and we expected a few students to show up,” she recalled. “Instead about 20 were there and asked tough, sharp questions.”

She also learned early that there are Lutes everywhere. When word spread that her husband had accepted the position to become PLU’s 13th president, both their emails were flooded with congratulations from Lutes on campus welcoming them to PLU. On the move from Stockton, Calif., they stopped by Ashland, Ore., at a bed and breakfast. The only other guests there were, of course, Lutes.

GRADUATING SENIORS  
**IN THEIR  
OWN  
WORDS**

This year, more than 850 students graduated from PLU – 680 of whom strutted across the Tacoma Dome stage in their caps and gowns, ready to begin the next exciting chapter of their life. Before they did, we asked a few to reflect on their time at PLU – was it a good investment, in both time and money? Here's what they told us.

“To sum up my PLU experience is nearly impossible – I can talk about it for hours, considering all the opportunities I have been blessed with, and all the people that I have met along the way.”

Chelsea Putnam, who received her fine arts degree in ceramics, came to PLU from East Wenatchee, Wash., to run track. During her years, she also became a Rieke Scholar, a Diversity Advocate, and president of the Art Club.

Interviews by Chris Albert  
Photos by John Froschauer



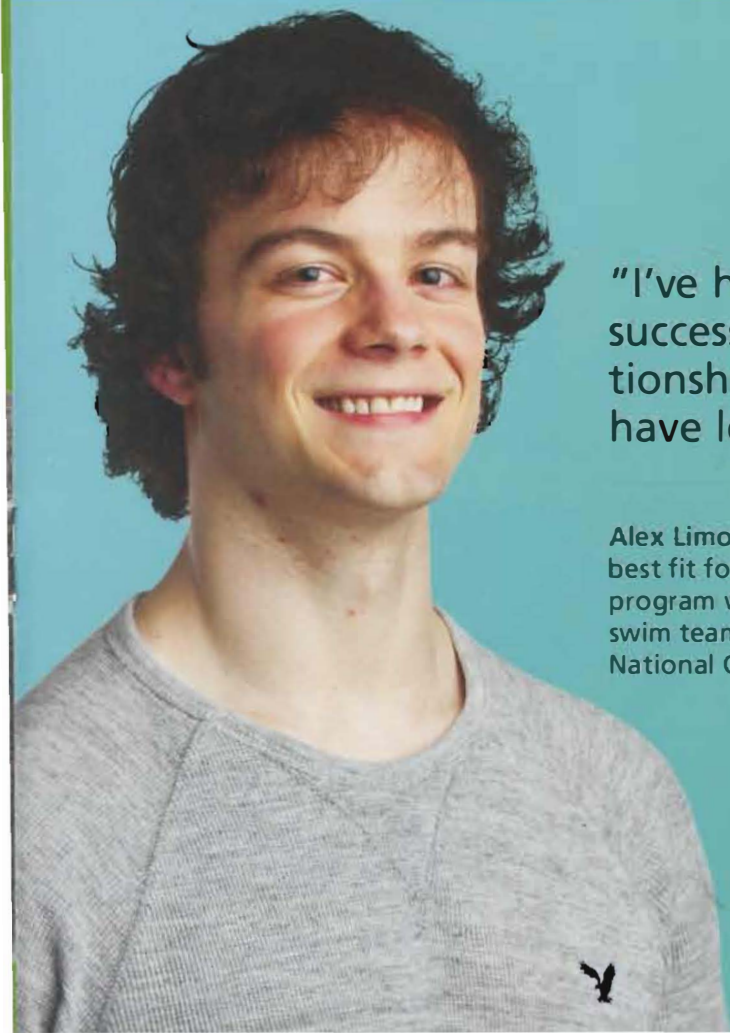
"My time at PLU has been a self-discovering journey. It presented me the opportunity to learn more about the world, our community, and my passion to fight against social injustices."

Tacoma native Angela Pierce was a member of the first cadre of Act Six Scholars at PLU. A graduate in social work, she received a Dudley Edmondson Fellowship in Youth Development and Education through the YMCA and Americorps in Seattle. After the 15-month fellowship, she plans to get her masters in social work.



"I've had some solid athletic and academic successes and made some enduring relationships in the process – I don't feel like I have left anything undone."

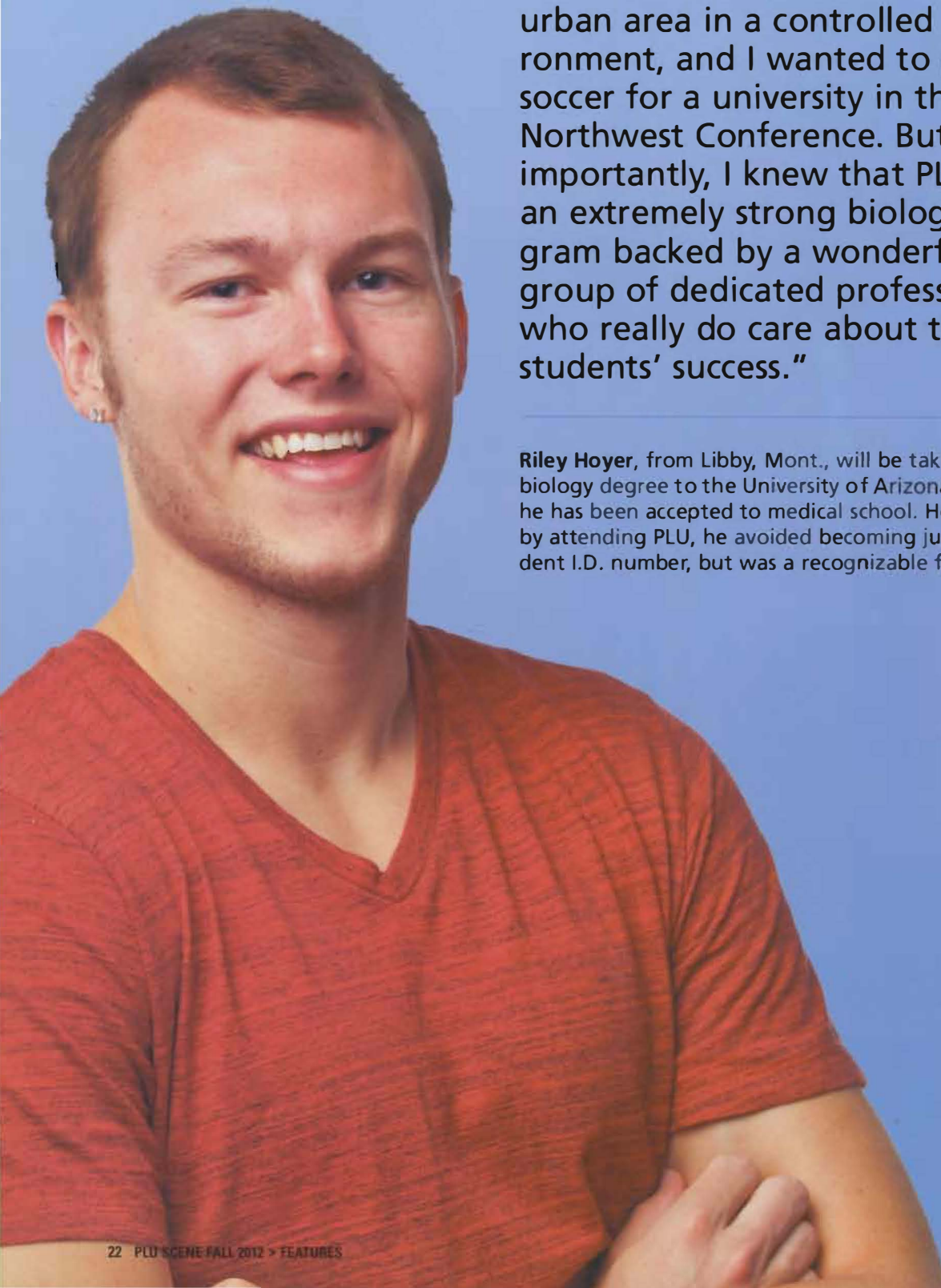
Alex Limoges came to PLU from Vancouver, Wash., because it was the best fit for him academically and personally – he knew the nursing program was highly regarded, and he could also compete with the swim team. Nursing degree in hand, he's now preparing for the National Council Licensure Examination for his RN certification.



GRADUATING SENIORS  
**IN THEIR  
OWN  
WORDS**

"I wanted to experience an urban area in a controlled environment, and I wanted to play soccer for a university in the Northwest Conference. But most importantly, I knew that PLU had an extremely strong biology program backed by a wonderful group of dedicated professors who really do care about their students' success."

**Riley Hoyer**, from Libby, Mont., will be taking his biology degree to the University of Arizona, where he has been accepted to medical school. He says that by attending PLU, he avoided becoming just a student I.D. number, but was a recognizable face.



"I find myself constantly filled with inspiration to find where my greatest passions meet the world's greatest needs. I have learned so much about myself – and the world – that I cannot even fathom the extent to which I have grown over the last four years."

A Chinese studies major from Snohomish, Wash., Mercedes Begley hopes to teach English in Guangxi, China, for a year. After that, she plans to get her masters degree in international relations and, eventually, to work for the United Nations, the State Department, or a non-governmental organization.



"I've learned about the way we tell stories to ourselves and to our communities – and I've trained to be the most effective engaging storyteller that I can be."

When Jordan Beck came to PLU from Portland, Ore., to interview for a Regents' Scholarship, he had such a profound discussion with the interviewer, he thought to himself: "what a great conversation – who cares if I get the scholarship?" He did get it, and four years later, he will be taking his theater degree to the Woolly Mammoth Theatre Company in Washington, D.C.



To see longer versions of these interviews – plus 23 more from PLU's graduating class of 2012 – visit [www.choose.plu.edu/own-words](http://www.choose.plu.edu/own-words)

# attaway lutes

## 2012 HALL OF FAME

It will be a family affair of sorts when the 22nd PLU Athletic Hall of Fame class is inducted during a luncheon on Friday, Sept. 28, in the Loren and MaryAnn Anderson University Center's Chris Knutzen Hall.

Entering the Hall of Fame will be Ralph Weekly, Karen Kvale Weekly, Marc Weekly, and the 1988 and 1992 national championship softball teams. Ralph Weekly was the head coach of the softball teams, Karen Kvale Weekly – now Ralph's wife – was a softball standout during the mid 1980s, and Marc Weekly – Ralph's son – was an All-America quarterback on the 1993 national championship football team.

Tickets may be purchased for the event by contacting the athletic office at 253-535-7352.



### SOFTBALL, 1988 (NAIA National Champions)

It was a season that lasted three innings longer than they probably would have wished, but the 1988 PLU softball players were happy nonetheless when they capped their outstanding campaign by winning the National Association of Intercollegiate Athletics (NAIA) national championship. The Lutes defeated Minnesota-Duluth, 2-0 in 10 innings, to win the first national championship of any kind for a women's sports team.

After opening the season with a 6-3 record, the Lutes won 33 of their last 36 games, including 16 in a row. PLU finished with a 39-6 record, eclipsing by 10 the previous program record for victories in a season. The Lutes were seeded 10th entering the 16-team tournament and then went on to win all five of their games at the event held in Oklahoma City, Okla. Catcher Karen (Beller) Stout, inducted into the PLU Athletic Hall of Fame in 2003, was named the tournament Most Valuable

Player after going 10-for-17 with two home runs and seven runs batted in. Her two-out, two-run double was the difference in the title game victory. Gerri Jones threw 25 innings at the national tournament and didn't allow a run over the final 20-2/3 innings. She threw a complete-game shutout in the championship. Joining those two on the all-tournament team were first baseman Diana Brummer and designated hitter Jacki Norvell.

In leading the team with a .452 batting average, six home runs and 38 runs batted in, Stout became PLU's first softball player to earn first team All-America recognition. The pitching staff compiled a 0.76 earned run average and Jones compiled a 20-2 record in the pitcher's circle. Head coach Ralph Weekly was named NAIA Coach of the Year.

Team members were Angela Aardahl, Dawn Woodward, Chrissy Alton, Tiffany Sparks, Holly Alonzo, Andrea Barbier, Laurie Ross, Theresa Tibbs, Brenda Morgan, Diana Brummer, Karen Stout, Jackie Norvell, Sue Schroeder, Machel Gielarowski, and Gerri Jones. The coaches were Ralph Weekly, Dave Zine and Karen Kvale.



### SOFTBALL, 1992 (NAIA National Champions)

PLU put together its longest winning streak of the season – five games – when it mattered most, and the Lutes won the 1992 NAIA national softball championship.

The 1992 season was marked as much by inconsistency as it was by outstanding talent that, in the end, came to the forefront. They opened the season by winning their first four games, but only one other time that year did they put together a similar winning streak. On the other hand, PLU lost two games in a row on only one occasion, which equated to a 34-14 final record.

After winning the conference and district titles, the Lutes lost to Pacific (Ore.) in the bi-district tournament, necessitating an at-large bid to the NAIA championships. That's where they Lutes put it all together. They raced through the tournament field undefeated, prior to facing Kennesaw State (Ga.) in the title game in Pensacola, Fla. Facing the tournament's top-seeded team, the seventh-seeded Lutes built a 3-0 lead and then withstood a seventh-inning rally to win the title game, 3-2. Pitcher Becky Hoddevik was named the tournament's Most Valuable Player after pitching all 33 innings for the Lutes. Joining her on the all-tournament team were catcher Toni Castrey, infielders Tristin Castrey and Brenda Dobbelaar, and outfielder Leta Baysinger.

Baysinger earned first team All-America honors for the second consecutive season. Also the District I Player of the Year, Baysinger led the Lutes with a .437 batting average, 11 doubles, seven triples and seven home runs. Keri Allen, who played second base, earned first team All-America recognition after hitting .399 with nine doubles and six triples. Designated player Jeanine Gardner received honorable mention accord, and head coach Ralph Weekly was named NAIA Coach of the Year.

Team members were Tristin Castrey, Jeanine Gardner, Krista Larson, Leta Baysinger, Martha Enyeart, Amie Grunwald, Becky Hoddevik, Toni Castrey,



Kim Peccia, Brenda Dobbelaar, Jenny Radke, Carla Lohn, Kerri Allen, Kellye Krug, Stefanie Johnston, Holly Lane, Jenn Flaskerud, Jenny Gilbert, Erika Norris, Tanya Dufrense, Andrea Farquhar, Stacy Lanning, Anne Schmidt, Shauna Gibson, and Heather Overman. The coaches were Ralph Weekly, Greg Farias and Karen Stout Beller.



### KAREN KVALE WEEKLY (Softball, 1984-87)

Arguably one of the finest dual-sport athletes in PLU athletic history, Karen Kvale Weekly was a softball and women's basketball standout in the mid 1980s.

Kvale became the first PLU softball player to receive All-America recognition when she earned second team All-America honors in 1987 after helping lead the Lutes to an appearance at the NAIA national tournament. Only one year earlier, Kvale had her best season in helping lead PLU to its first-ever trip to nationals. A shortstop, Kvale compiled a .978 fielding percentage, committing just two errors in 93 total chances, and she hit .424 while also driving in 30 runs.

Not only was Kvale a standout on the softball field, she also received honors for her work in the classroom. She earned NAIA All-America Scholar-Athlete accord after her junior and senior years.

While all four PLU teams for which she played compiled winning records, Kvale participated at a time when PLU was playing significantly fewer games than it has in recent years. Though many of her season and career records have been surpassed, she remains the season leader with 19 sacrifice hits and the career standard bearer with 46 doubles and 45 sacrifice hits. Additionally, she still holds PLU softball career records for assists with 331 and fewest errors with 11.

Kvale also played basketball for three seasons at PLU, scoring 744 points in 87 games and ranking 10th on the career lists in both field goals attempted and field goal percentage.



### MARC WEEKLY (Football, 1990-93)

Marc Weekly established 11 NAIA Division II national records during an outstanding four-year career in which he helped PLU advance to a pair of national title games, including a 50-20 victory over Westminster (Pa.) for the 1993 championship. Remarkably, the senior quarterback played the game with a non-throwing shoulder separation, which occurred in a semifinal victory over Baker (Kansas).

Following that memorable season in which he helped the Lutes to a 12-0-1 overall record and the program's third national title, Weekly earned first team All-America honors after earlier being named the Columbia Football Association (CFA) Mt. Rainier League Offensive Player of the Year. By the time the season ended with PLU's title-game win, Weekly had established 30 new CFA records.

Those records were just the beginning of a long list of new standards established by the right-handed quarterback. For one, he set a new collegiate football record with a combined 143 career total offense touchdowns (113 passing, 30 rushing). As far as NAIA Division II career records, Weekly became the standard bearer in four categories – highest average gain per play (7.4 yards), yards per passing attempt (8.95), touchdown passes (113), and highest percentage of touchdowns per pass attempt (11 percent; 113 touchdowns on 1,048 attempts). He also established six national single-season records in 1993, including total offense (4,065 yards), touchdown passes (46), pass completion percentage (.649; 226 completions in 348 attempts), and yards gained per pass attempt (10.7).

By the time he completed his eligibility, Weekly ranked fifth on the NAIA total offense career list with 10,722 yards, including 1,344 rushing yards, the most of any member of the Top 10 at that time.

Weekly shared starting quarterback

responsibilities during his freshman season in 1990 and was the starter for his three remaining seasons. He led the Lutes to the 1991 NAIA Division II title game which ended with a loss at Georgetown (Ky.). During Weekly's four years, the Lutes compiled a 41-6-1 overall record.



### RALPH WEEKLY (Softball Coach, 1986-94)

Ralph Weekly built the PLU softball program into a NAIA power, leading the Lutes to a pair of national championships in three title-game appearances.

In nine seasons at the helm of the program, Weekly led his PLU teams to a record of 300 wins and 94 losses against intercollegiate competition. During that time the Lutes won eight conference and district championships on the way to appearing at the NAIA national tournament on eight occasions. The Lutes won NAIA national championships in 1988 and again in 1992 and also placed second in 1990. A total of 10 different players earned first team All-America honors, with two of those athletes recognized twice. Five more players earned either second team or honorable mention All-America status, and 24 earned first team all-district accord.

Plenty of national honors came to Weekly during his nine-year PLU tenure. He earned NAIA National Coach of the Year honors during the two championship seasons, was named the National Softball Coaches Association Small College Coach of the Year in 1993, and received NAIA West Region Coach of the Year recognition from 1986-90 and from 1992-94.

Weekly left PLU after the 1994 season to take over the program at NCAA Division I Tennessee-Chattanooga. He moved on to the University of Tennessee in 2002 and in 11 seasons has averaged more than 46 wins per season while leading the Lady Vols to national runner-up status in 2007 and to a pair of third-place finishes in 2005 and 2006. —Nick Dawson [S]

# 2012 ALUMNI AWARDS & RECOGNITION

## *Distinguished Alumnus Award*

### **Ray Heacox**

For his outstanding contributions to television, technology and higher education, and for his continued dedication to the university, Ray Heacox '76 receives the Distinguished Alumnus Award.

Heacox has served as president and general manager of King Broadcasting (Belo Corp, Seattle) since 2005. Prior to joining Belo Seattle, Heacox was the first director of the Paul F. Harron Graduate Program in Television Management at Drexel University in Philadelphia where he was charged with creating the two-year, full time, dual-degree (MS/MBA) curriculum. During the 1990s Heacox held several prominent management positions with NBC including president and general manager of KNBC in Los Angeles and executive vice president of sales for the NBC-owned and operated station group. He left NBC in 2000 to become president, and later CEO, of Media Ocean Inc., a business-to-business technology company.

Heacox is also chair of the National Multiple Sclerosis Society/Greater Northwest Chapter, trustee and vice chair of the Arts Fund Board, a member of the Seattle Children's Hospital Foundation Board, a member of the Benaroya Research Institute Board of Directors and a past member of the NBC Affiliates Board.

Heacox wears his black and gold with pride and has served the PLU community several times by engaging faculty, staff and students in his office in Seattle and on campus.

## *Distinguished Alumnus Award*

### **Robert Gomulkiewicz**

For outstanding achievement as an attorney and in community service, Robert Gomulkiewicz '83 receives the Distinguished Alumnus Award.

In 1991, Gomulkiewicz joined the Microsoft Corporation as associate general counsel where he led a group of lawyers providing legal counsel for development of Microsoft's major systems software, desktop applications, and developer tools software, including Windows and Office.

Gomulkiewicz joined the University of Washington School of Law faculty in 2002 to direct the graduate program in Intellectual Property Law and Policy. He currently serves as the University of Washington Law Foundation Professor of Law and as the school's chair and director for Academics, Law, Technology and Arts Group.

Gomulkiewicz is also active in several community organizations, having served on the boards of Rural Development Institute, Independent Colleges of Washington, and Camp Fire USA. He has also performed pro bono work for the Northwest Immigrant Rights Project, representing refugees.

Elected to PLU's Board of Regents in 2001, Gomulkiewicz proudly served his alma mater in this capacity for nine years and was chair of the board from 2006 to 2010. He was also the chair of the Xavier Hall Restoration Committee and led the effort to name the Philip Nordquist Lecture Hall in honor of his beloved PLU history professor.

## *Outstanding Recent Alumnus*

### **Mary Beth Leeper**

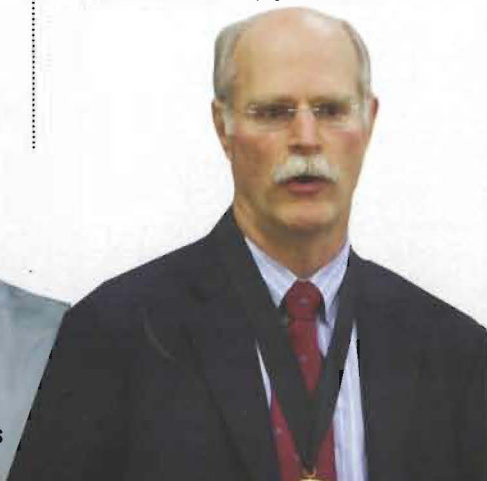
For her outstanding achievements as an attorney and for her service to immigrant communities, Mary Beth Leeper '00 receives the Outstanding Recent Alumnus Award.

Upon graduation from PLU, where she double-majored in Spanish and global studies, Leeper began a volunteer commitment with the Mennonite Central Committee in Bolivia, serving as a Working Children's Program educator with the non-profit organization PRONATs. After completing her three-year commitment to MCC in Bolivia, Leeper returned to the United States and became the volunteer liaison for the MCC in the Seattle area.

Fully bilingual and with outstanding intercultural and interpersonal skills, she secured a part-time job in an after-school program for Latino youth through the Auburn School District.

For the next three years, she worked for the City of Auburn. As Cultural Diversity Liaison, she helped policy makers understand the changing needs of Auburn and helped develop a program in which new immigrants would have leadership opportunities.

In 2010 Leeper graduated from Seattle University's School of Law with honors. She was awarded the CALI Excellence for Future Award in Advanced Immigration Law. She was hired as the Children's Coordinating Attorney for the American Bar Association's Volunteer Advocated for Immigrant Justice in Seattle. She is now associate attorney with Hanis, Irvine, Prothero in Kent, Wash., where she continues to represent immigrant adults in removal proceedings.



### Special Recognition Award

#### Bob Robertson

As a friend of PLU who has uniquely served the university, Bob Robertson receives the Special Recognition Award.

Robertson ranks among the Northwest's greatest sportscasters. After college, Robertson passed on a chance to play minor-league baseball for the Portland Beavers to broadcast games for the Wenatchee Chiefs, a minor-league baseball team in the Class B Western International League. He spent 1955-56 at the University of Notre Dame broadcasting sports and moved to Fresno, Calif., in 1956 to call baseball games. In 1964, he was hired to be the voice of Washington State University.

Robertson has announced WSU football for the past 45 years, and early in the 2011 season, logged his 500th game with the Cougars. In 1999, he began broadcasting games for the minor-league Spokane Indians baseball team. Robertson has also provided play-by-play for the Tacoma Rainiers, Sounders, Seattle Totems, Seattle University men's basketball, boxing, wrestling, hydroplanes, table tennis, roller derby and the Mariners. For the past 12 years Robertson has called men's and women's basketball conference games for Pacific Lutheran University.



### Heritage Award

#### Ed Larson

In recognition of his distinguished service to PLU, Ed Larson '57 receives the Heritage Award.

Larson has worked at PLU since 1970 and currently serves as the executive director for Charitable Estate Planning in the Office of Development. He was a part of the group that established the Heritage Society at PLU, which honors individuals who have made estate-planning provisions on behalf of the university. These estate plans for PLU include bequests, charitable gift annuities and charitable remainder trusts. Now more than 40 years later, Larson has been an integral part of the creation of PLU's endowment and long-term financial success. The Heritage Society now includes more than 400 families with documented gifts totaling approximately \$100 million.

Ed Larson and his wife, Betty, also established the Per and Anna Johnson and Ed and Hildur Larson Scholarship. It is awarded to a student from a Scandinavian country or a student majoring in Scandinavian Studies at PLU, in support of Scandinavian culture and heritage at PLU. Larson is a Scandinavian Cultural Council (SCC) Executive Board member. He helped create the SCC Endowment Fund to preserve and expand Scandinavian heritage and traditions at PLU and throughout the greater Puget Sound region.



### Brian C. Olson Student

#### Leadership Award

#### Abigail Pishaw



For her leadership on campus and commitment to a life-long relationship with the university,

Abigail Pishaw

'12 receives the Brian C. Olson Student Leadership Award.

Pishaw, from Forest Grove, Ore., double-majored in communication and theater. She was a student intern in the PLU Office of Development, where she provided support to her colleagues and PLU constituents. She was administrative student lead last summer and served as a mentor to her fellow student employees. She looked for every opportunity to get to know alumni, parents and friends of PLU. Pishaw was the volunteer chair for the 2012 Graduation Gift Committee, and was very involved with many PLU theater productions.

### Brian C. Olson Student

#### Leadership Award

#### Kelvin Adams



For his leadership on campus and commitment to a life-long relationship to the university, Kelvin Adams '12

receives the Brian C. Olson Student Leadership Award.

Adams majored in physics and is from Portland, Ore. He was enrolled in the 3-2 Engineering program. However, instead of transferring after three years, Kelvin chose to finish his degree at PLU and then enroll at Oregon State University to earn his engineering degree. One of the major factors in this decision was that he was a distinguished member of the Choir of the West. Adams maintained a 3.9 GPA while participating in the Student and Alumni Association and working as student intern in the Office of Alumni and Constituent Relations. Adams is a Class Representative for the class of 2012. [S]

# alumni news & events

# JOIN THE

## HOMECOMING SOIREE

SEPT. 29  
MURANO  
HOTEL

Spend an evening reconnecting in style with former classmates, teammates, faculty, staff and administrators on Saturday, Sept. 29, at the Hotel Murano in downtown Tacoma. The Homecoming Soiree, which promises to be a snazzy evening full of fun and festivities, is also the perfect opportunity to welcome PLU's 13th president and his wife to their first Homecoming as Lutes. Throw on your dancing shoes and join us for this spectacular evening!

## MEET



### MEET THE PRESIDENT

The Homecoming Soiree will be the final event in a series of inaugural events planned to welcome President Thomas W. Krise and Mrs. Patricia Krise. While there will be specific activities planned throughout the evening for our featured reunions, we also invite all PLU alumni to attend this special event to meet and welcome the president and Mrs. Krise.

### HOMECOMING SOIREE

Living up to its billing, "soiree," the evening will include food, dancing, drinks, music and a chance for reunion groups and all alumni to reconnect with fellow Lutes in the Murano ballroom – all for only \$35 per person. As part of the event, we have designed an opportunity for specific reunion groups to socialize with their classmates in designated areas of the hotel.



## PARTY

### ALL ALUMNI

All alumni are invited to arrive anytime after 8 p.m. to start the party in the ballroom. There will be music, dancing, hors d'oeuvres, desserts, coffee and non-alcoholic beverages. No host bars will be located throughout the hotel.

## GOLD

### REUNION ALUMNI

PLU GOLD (Graduates of the Last Decade – 2002-2012), the classes of 1962, 1972, 1977, 1987, and this year's academic affinity reunion group, graduates from the Division of the Social Sciences, are invited to arrive at 7 p.m. for reunion-specific gatherings located throughout the hotel.



# THE FUN

## JOIN

AND INVITE YOUR FRIENDS, TOO!

The best way to get to see the people you want to see is for you to extend an invitation to your friends for what promises to be an amazing evening. Let your Lute friends and family know you are planning to attend, and that the PLU 2012 Homecoming Soiree would be a great place to meet up.

To register for the Soiree and to see the complete schedule of Homecoming 2012 events, please visit [www.plu.edu/alumni/homecoming](http://www.plu.edu/alumni/homecoming).

## DANCE

### DANCE THE NIGHT AWAY

Terry Lauber, a Grammy nominated musician and one of Seattle's premiere vocalists and recording producers, will be providing the dance music for the evening. Lauber and his Live Band have been performing in the greater Seattle area for many years, providing music for wedding receptions and other special occasions. They perform music in many styles, including jazz from the swing era and many of the most popular songs throughout the decades.



## AWARDS

### ALUMNI SUPERSTARS

Our Alumni Recognition Award Recipients, honored earlier in the day, will be with us for the soiree and we hope you will take the opportunity to help us celebrate their accomplishments. Alumni Award Recipients are featured on pages 26 and 27 of this magazine.

### WHERE ARE THEY NOW?

#### BELOVED FACULTY AND STAFF

We have extended the invitation to PLU faculty and staff, past and present, to join us for this special occasion. If there are certain people that you would especially like to see at the Homecoming Soiree, please be sure to indicate that on your registration form or give us a call in the Office of Alumni and Constituent Relations at 253-535-7415. ☺

## MURANO HOTEL

continued

# Join the Click!

## Lute Summer Photo Contest



Another great way to connect with alumni is through the PLU Alumni Facebook page at [Facebook.com/PLUAlumni](http://Facebook.com/PLUAlumni). Right now the Office of Alumni and Constituent Relations is sponsoring a Lute Summer Photo Contest. "Like" the Facebook page and share your favorite photo displaying your Lute Pride to be entered in a drawing for great prizes. Whether the photo is from a summer vacation trip, a small reunion of classmates, a wedding of alumni, or your pets dressed up in Black and Gold, we want to see your best Lute photography.

### 1ST PLACE

Homecoming Package for 2 or a \$75 gift card to the Garfield Book Company at PLU

### 2ND PLACE

2 Tickets to a Portland, Seattle, or Tacoma PLU Christmas Concert or \$40 gift card to the Garfield Book Company at PLU

### 3RD PLACE

PLU Alumni Car Care Package with Alumni license plate frame and key chain.

A WINNER WILL BE ANNOUNCED SEPTEMBER 15.

# THANK YOU!

## Alumni Print Directory

We want to thank all who have taken time out of their day to participate in the Alumni Print Directory Project, Pacific Lutheran University Alumni Today, through Harris Connect. If you have yet to speak with a Harris Connect representative to verify your information, it is not too late and we encourage you to call toll free, 1-800-671-0198. We greatly appreciate your help in making this publication a success!

For more information and FAQs about the Alumni Print Directory Project, visit [www.plu.edu/directoryFAQS](http://www.plu.edu/directoryFAQS)



## PLU Night at the Rainiers August 24

For only \$10 a person, join 1,200 fellow Lutes for a night at Cheney Stadium to see the Rainiers play the Las Vegas 51s. Event includes admission to the game, a hotdog, soda, chips, fireworks after the game – and meeting old and new Lutes alike!

**TICKETS:** PLU Office of Alumni and Constituent Relations, [www.plualumni.org](http://www.plualumni.org) or 253-535-7415

## Pencil Us In

### UPCOMING EVENTS

- August 24 ..... PLU Night at the Rainiers, Tacoma
- September 4 ..... Presidential Inauguration and First Day of Classes
- September 15 ..... PLU vs. Redlands Football Tailgate in Redlands, Calif.
- September 28-30 ..... Homecoming Weekend 2012
- September 29 ..... Homecoming Game: PLU vs. Linfield Football, PLU
- September 30-October 1 ..... Alumni Board Meeting, PLU
- October 6 ..... PLU vs. Lewis and Clark Football Tailgate in Portland, Ore.
- November 2-4 ..... Family Weekend 2012, PLU
- November 4 ..... Parent's Council Meeting, PLU
- November 10 ..... PLU vs. Menlo Football Tailgate in Atherton, Calif.
- December 3 ..... Music Affinity and GOLD Affinity Reunions, Seattle (PLU Christmas Concert)
- December 4 ..... Music Affinity and GOLD Affinity Reunions, Portland, Ore. (PLU Christmas Concert)

For more information: [www.plualumni.org](http://www.plualumni.org) or call 800-ALUM-PLU.

# alumni profiles

## 'I'm an unlikely librarian'

**B**rian Bannon '97 couldn't have imagined he would become the head of the country's second-largest library system, the Chicago Public Library.

He has always loved books but never saw libraries as his calling, until his late college years. His interest and expertise in the intersection between libraries and technology has allowed Bannon the opportunity to make a difference.

"I want to leave the world better than I found it," Bannon said. "I have a sense of wanting to give back."

A native of a small farming community outside of Bellingham, Wash., Bannon grew up in a farmhouse, attending the public school system. Active in sports as a child, most notably swimming, Bannon wound up at PLU on the swim team. Drama was another hobby of his, a talent that even landed him a commercial with Hilary Swank.

Bannon recalls the difficulty he had learning to read as a child due to his experience with dyslexia. Because of the setback, he knew that he was going to have to find another way to learn than traditional book reading. Bannon found he was able to learn best when he had hands-on experience, something that later influenced his interest in libraries and their use of technology.

Now the newly appointed CEO of the Chicago Public Library System, Bannon has definitely found his passion. He replaced the longtime library commissioner at the beginning of March, before which he held titles of the San Francisco Public Library's chief information officer and chief of branches since 2006. An internship at the Bill and Melinda Gates Foundation and the opportunity to serve as a branch manager for the Seattle Public Library led Bannon to his job in San Francisco.

"This is an amazing example that people shouldn't make assumptions about what people can and can't do," said Beth Kraig, a history professor at PLU and a mentor of Bannon's.

One of the first openly gay students



Photo courtesy Chicago Public Library

at PLU, the atmosphere was not always positive, Bannon admits. At a time when society wasn't as accepting, he and a group of other students and faculty saw the need for change. Thus was the birth of Harmony, PLU's queer-straight alliance group, which still has a strong presence on campus today.

Despite the difficult moments, Bannon remembers PLU fondly, and that he wouldn't change a thing about his college experience. "I couldn't have imagined a better place to learn than on that campus. I thought it was worth every penny," Bannon said.

Bannon got his first taste of working in libraries while in college, volunteering at the University of Washington-Tacoma library. It was there that he felt a spark and found in himself at the crossroads of libraries and technology, and how they could be integrated to better serve and educate the public.

"I really started to get passionate about what public libraries could do," Bannon said.

A psychology and self-designed gay and lesbian studies double major dur-

ing his time at PLU, Bannon said that he was an unlikely candidate for someone who would go to library school. But thanks to his interest and the support from others, he found himself walking down that path.

Upon receiving his bachelor's from PLU, Bannon found himself at the University of Washington's Information School, earning his master's of library and information science, thanks, in part, to encouragement from Beth Kraig.

Looking ahead, Bannon hopes that the Chicago Library can be a model for others around the country.

"I hope to continue to push the thinking about the role of libraries in our current stage and era," Bannon said.

Kraig said she is extremely proud of Bannon's accomplishments and can't wait to see where the future leads him.

"It's been a real privilege for me to know him, to watch him thrive," Kraig said. "I just feel like I'm watching the Brian Bannon show." □

—Hailey Rile '12

# alumni class notes

Class Representative positions available: **1954, 1969, 1971 and 1980**

## 1930

**Edna (Dagsland) Haneberg** celebrated her 101<sup>st</sup> birthday on Dec. 18!

## 1931-1935

Golden Club Class Representative Committee

**Herman "Bud" Anderson** died March 20 at "99 years young." After graduation from PLU in 1931, Bud served in the U.S. Army. A classic World War II love story, Bud sent letters from where he was stationed in India to his father who shared them with the employees of Washington Hardware Store. One such employee was Vivian Peterson, who was particularly touched by the letters and the man who wrote them. They were married in 1947 and spent 65 years together. Bud will be remembered for his unwavering devotion to his family, his lifelong passion for golf, and his distinctive and infectious laugh. He is survived by his wife, Vivian; daughter Gretchen Pilips; two grandchildren and two great-grandchildren.

## 1936

Class Representative – **Volly (Norby) Grande**

## 1937-1939

Golden Club Class Representative Committee

## 1940

Class Representative – **Luella (Toso) Johnson**

## 1941

Golden Club Class Representative Committee

**Irma (North) Bendock** died April 17. Irma graduated from PLC with a degree in elementary education. Over a 40-year span (with several years off to raise a family), she taught kindergarten through second grade in the Tacoma, Seattle and Shoreline school districts. She had a particular interest in screening/identifying specific learning disability children at an early age. After retiring, her spirit of adventure led her to much traveling, particularly Norway, Hawaii, Canada and Alaska. Irma is survived by her brother Martin North; three sons, Charles Bendock, Terry Bendock and Jeff Bendock; five grandchildren and eight great-grandchildren.

## 1942-1944

Golden Club Class Representative Committee

## 1945

Class Representative – **Annabelle Birkestol**

## 1946

Golden Club Class Representative Committee

## 1947

Golden Club Class Representative Committee

**Ruth (Towe) Johnson** died Feb. 3. Ruth married fellow Lute, Rev. **Rudolph "Rudy" Johnson '48** in 1948. Rudy preceded Ruth in death. Ruth is survived by children Gerald Johnson, **Beatha Johnson '73**, Kathryn Prodoehl and **Elaine (Johnson) Schwartz '76**; seven grandchildren including **Andrew Schwartz '07**; and four great-grandchildren.

**Elaine (Enwiller) Cook** died March 29. After working in the navy yard in Bremerton, Wash., during World War II, Elaine met her husband, **Durward Cook**, at PLC. They were married in 1947. The family moved to Federal Way, Wash., where Elaine was active in community groups such as PTA, and advisory councils to the school board and local government. She was also an active member of St. Luke's Lutheran Church. In 1976, Elaine returned to, and graduated from, PLU. Elaine taught school in Puyallup for 19 years and, after retiring in 1987, she traveled extensively. She was preceded in death by her husband, Durward, and her daughter, **Connie (Cook) Britt '74**. Elaine is survived by three children, **Steven Cook '72**, **Keith Cook '78** and Teri; 11 grandchildren and nine great-grandchildren.

## 1948

Class Representative – **Norene (Skilbred) Gulhaugen**

**Sylvia (Blomelie) Neal** died March 7. During her time at PLC, Sylvia sang with the Choir of the West. Before graduating, she married Malcolm Neal and they lived in Tacoma, Wash. They raised three children. Widowed in 1997, Sylvia moved to the waterfront in Gig Harbor, Wash., where she continued being an amazing seamstress and avid reader who enjoyed studying other cultures and philosophies. Many of her accomplishments include several years as a Red Cross volunteer during the Vietnam War, assisting struggling students with reading, teaching Sunday school and being an active church member. She is survived by children Thomas, Barbara and Beth; three grandchildren; and a variety of cousins, nieces and nephews.

## 1949

Golden Club Class Representative Committee

## 1950

Class Representative – **Dick Weathermon**

## 1951-1952

Golden Club Class Representative Committee

**Ludwig Siqueland** died Apr. 8. He served faithfully at Camano Lutheran Church on Camano Island, Wash., St. Marks in Tacoma, Wash., and served as director of outreach in the Northwest District of the ELCA. He is survived by his wife, **Evelyn "Dolly" (Mikkalsen '51) Siqueland** who resides in Shelton, Wash.; four children and eleven grandchildren.

**Cecil Tungsvik** and his wife, Mary, have lived in Auburn, Wash., since 1956. They have enjoyed living in the same house since 1966.

## 1953

Class Representatives – **Carol (Schuler) Karwoski** and **Naomi (Roe) Nothstein**

**Ellen (Hessen) Grewe** died February 23 in Everett, Wash. Ellen worked as an x-ray receptionist at Cascade Valley Hospital in Arlington, Wash. She was a longtime member of Our Saviour's Lutheran Church and TOP's Club. She married Dan C. Grewe in 1959 and they had three children. Ellen was a wonderful loving mother and dear friend. She is survived by husband, Dan C. Grewe, children Ruth E. Gonzales Jr. and Roy D. Grewe; and five grandchildren.

## 1954

Class Representative – Vacant

**Donn Koessler** died Mar 2. While at PLC, Donn played baseball and basketball for legendary coach **Marv Harshman '42**. It was in these athletic pursuits that many of his lifelong friendships were formed. Donn married his college sweetheart, **Patricia (Molver '56) Koessler**, on November 6, 1954. They were together 57 years and eventually made their home in Fircrest, Wash., where they raised four sons. Donn began his service in the U.S. Army in 1955 and was honorably discharged in 1958. In 1958, Donn began a long distinguished career with The Bank of California/Union Bank trust department that spanned more than 45 years. He retired as vice president and investment officer. He was a member of the Young Men's Business Club and served as treasurer of the Jesse Dyslin Boys' Ranch. He also was a member of the PLU Q Club, Emmanuel Lutheran Church, Sons of Norway and the Tacoma Elks. He is survived by his wife, Patty; brother, Jack Smith; four sons, **Steve, Craig '83, Gary '85 and Paul '87**; PLU daughter-in-law, **Wendy (Eager '85) Koessler**; and eight grandchildren.

## 1955

Class Representative – **Phyllis (Grahn) Pejsa**

## 1956

Class Representatives – **Ginny (Grahn) Haugen** and **Clarene (Osterli) Johnson**

**Donald Morris** died Mar. 25. He majored in biology and played football at PLC. In 1955, he married **Gail (Taylor '55) Petersen** and they had six children. He began his career in education, teaching and coaching at Anacortes (Wash.) High School, and continued to the Clover Park School District serving as a high school vice principal, principal and a district administrator. Later he served as superintendent of the Onalaska School District and retired from the Sequim School District in 1992. He is survived by sister, Fern LaVonne Quake; children, **Peter '78,**

PLU daughter-in-law **Alana (Koetje '79) Morris, Kris '80, Stacie (Morris '83) Schaler**, Becky Huff, Marta and Mark; 14 grandchildren, including **Emilie Schaler '09** and **Drew Huff '15**.

## 1957

Class Representative – **Ed Larson**

**William Foege** was honored with the Presidential Medal of Freedom, the nation's highest civilian honor. William is a physician and epidemiologist who came up with the vaccination plan that ultimately rid the world of small pox. William was also recently awarded the Allen Prize for Social Courage that recognizes individuals who, by standing up for clear moral principles in the social arena, have positively affected public discourse at the risk of their own careers, livelihood, and their lives. William is currently the senior fellow at the Bill & Melinda Gates Foundation in Seattle.

## 1958

Class Representative – **Don Cornell**

**Norman R. Fiess** died Feb. 12. After graduation from PLU, Norm returned to his hometown of Edwall, Wash., where he worked the family farm along with his brother. He was very active in the Emmanuel Lutheran Church in Reardan, Wash., donating his time as organist, pianist and treasurer. After relocating in 1989 to southcentral Washington, he and his wife Nancy settled in Richland, Wash. In 1993 Norm semi-retired and spent 17 seasons as a tax preparer for H&R Block. Norm was an avid bowler and enjoyed playing golf in his latter years. He and Nancy spent their time together going to local concerts and plays. He is survived by his wife, Nancy; his brother, Dennis Fiess; and four children. He is also survived by 13 grandchildren, and 11 great-grandchildren.

## 1959

Golden Club Class Representative Committee

**Ronald C. Jorgenson** died Aug. 11, 2011. Ron earned his bachelor's degree in education from PLC, then earned two master's degrees, one in school administration from California State Hayward, and another in natural science from University of Oklahoma. Known as "Mr. J.," Ron retired in 1999 after 40 years of teaching. During his career he taught grades ranging from third to 12th, with the last 16 years teaching physics and photography at Mt. Eden High School in Hayward, Calif. Ron was an avid skier and raced for the Far West Ski Association and Snow Flakes Ski Club. He had a passion for travel and adventure. In recent years Ron and his wife, Jeri, traveled to Costa Rica, Peru and went on a safari in Africa. Ron is survived by his wife of 26 years, Jeri; two daughters, two step-daughters and 10 grandchildren.



**Anita (Gregersen)** and husband **David Christian**, and **Margarethe (Gregersen '61)** and husband Gene Farnstrom celebrated a combined 100 years of marriage between the two couples. In celebration, they visited their heritage countries: Norway and Denmark in the summer of 2011. Great memories were built in those three weeks!

## 1960

Class Representative – **Marilu (Miller) Person**

**Don Slattum** died Feb. 15. Don taught elementary school in Lakewood briefly before becoming an FBI agent. He had a lengthy and laudable career, primarily in the San Diego, Calif. area where he retired. He is survived by wife, **Geraldee (Dubail '59) Slattum**.

## 1961

Class Representative – **Ron Lerch**

**David Gaenicke** and his wife, Linda, returned on Feb. 27 from a 14-day trip to Hawaii. It was a gift from their children, who surprised them as part of their 47th wedding anniversary. Their grandsons, Hunter and Austin, caught a 40-pound Hawaiian spearfish off the coast of Kona, which fed the family for more than two days.

## 1962 | REUNION |

Class Representative – **Leo Eliason** and **Dixie (Likkel) Matthias**

**Joy (Suckew) Meya** died Feb. 14. She is survived by her husband, Manfred Meya.

## 1963

Class Representative – **Merlyn** and **Joan (Maier) Overland**

**Joanne Bjork Klein** died Jan. 29 in Tacoma, Wash. Joanne met her husband, Richard "Dick" Klein on a blind date, and they were later married in 1948. In 1963, Joanne graduated from PLU with her bachelor's degree in education. Thus began a lifelong affiliation with PLU and the Scandinavian Cultural Center where she received an Outstanding Service Award. She was also a founding member of Christ Lutheran Church in Lakewood, Wash., and an early supporter of Lakewood Nursery School and Charles Wright Academy, where seven of her eight children attended school. Over the years, Joanne and Dick traveled extensively, preferring trips that allowed them to become completely immersed in the culture of a new place. Joanne was preceded in death by her son, **Stephen Klein '83**. Joanne is survived by her husband, Dick; children James, Nancy, Peter, Jennifer, Lisa and Andrea; PLU daughter-in-law **Cynthia Klein '76**; twelve grandchildren including **Zachary Klein '12**; and one great-grandchild.

**Donna (Baerg) Mosher** lost her home in the May 22, 2011 tornado which devastated Joplin, Mo. Just prior to Christmas, she was able to move into her new home. Her husband of 47 years passed away in March of 2010. Thankfully, friends, children and church family have been wonderful support and help.

## 1964

Class Representative – **Jon** and **Jean (Riggers) Malmin**

**David Kniefel** died Oct. 2. He was former vice president and director of the special technical services group of Computer Power Group of New York. Dr. Kniefel, who joined Computer Power in 1991 as director of special technical services in the Eastern region, was previously a partner in Deloitte and Touche's Advanced Technology consulting practice in the New York office. He is survived by his wife, Diane Kniefel; son, Michael D. Kniefel; brother and sister-in-law, Daniel and Nancy Kniefel; sister and brother-in-law, Diana and Richard LaPlante; and two nephews and a niece.

## 1965

Class Representative – **Dave Wytko**



**James "Jim" Collier** recently "learned how to sail" crossing the South Atlantic Ocean with three other men on a voyage

from Cape Town, South Africa, to Rio de Janeiro, Brazil. They stopped just once, on St. Helena Island, where Napoleon was exiled. Never too late to learn!

**Stan Hoobing** recently served his seventh assignment as interim pastor at First Lutheran Church and American Lutheran Church in Circle and Richey, Mont. This makes the third synod of the ELCA where Stan has served as interim pastor. He finished in July and hopes to serve another interim post in the near future.

## 1966

Class Representative – **Frank Johnson**

## 1967

Class Representative – **Craig Bjorklund**

**Marjorie Kelly** died Aug. 14, 2011, in Tacoma, Wash. Marjorie graduated from Tacoma General School of Nursing and, after raising a family, went back to school and graduated from PLU. She worked as a school nurse until retiring in 1980. Marjorie enjoyed traveling around the country with her husband, Stuart, in their motor home, visiting her far-flung family. She also enjoyed Thursday night cards with her friends, knitting and crocheting, and sharing a latte with her family and friends. Marjorie is preceded in death by her devoted husband, Stuart, and her parents. She is survived by her sister, Quida Keener; children Michael and Teresa; six grandchildren and three great-grandchildren.

## 1968

Class Representatives – **James** and **Georgia (Stirn) Girvan**

**Trudy (Enstad) Campbell** died Jan. 23. Trudy met her soul mate, **Daniel Campbell '69**, while they were both attending PLU. The two were married in 1969. Trudy was employed in several school districts including Sunnyvale,

Calif.; Tacoma, Wash.; and Salem, Ore. She concluded her teaching career with Catholic Schools at St. Vincent de Paul and Queen of Peace, in Salem. Her proudest contributions, however, were her children, Chad, Jonathan, Andrew and **Sarah (Campbell '03) McDowell**. Trudy always brightened around her eight grandchildren. She was also blessed by an extraordinary community of dear friends and extended family.

**Gary Beard** is currently a 787 flight simulator instructor with the Boeing Company in Renton, Wash., where he teaches airline pilots how to operate the Boeing 787 Dreamliner at locations around the world.

## 1969

Class Representative - vacant

**Robert "Bob" Beller** died Mar. 28. Bob was a very accomplished athlete throughout his high school and college years. He was inducted into the Kitsap Old-timers Association Hall of Fame in 1996. He worked at, and retired from, Puget Sound Naval Shipyard. Bob loved fishing, golfing and gardening – and he especially loved watching his grandsons play ball. He was preceded in death by his parents, and his brothers Loren and Larry. He is survived by sisters Connie, Diana, Bertie, and Rose; daughters Beth Hallmark, and Lori Aerne; three grandsons, Cody, Devin and Tyler; daughter Kristyn Knight and her two grandsons, Kendall and Kaeden; and his son Robert.

## 1970

Class Representative – **Bill Allen**

**Tom Jones** retired at the end of March after 35 years in the retail pharmacy industry. When not traveling, Tom and his wife, Mary, are at home in Olympia, Wash.

## 1971

Class Representative – **Vacant**

**Jack Olive** died Jan. 9. He served as pastor at United Methodist churches in Western Washington, and as assistant dean for ecumenical relations at the Seattle University School of Theology and Ministry. He also served as adjunct professor of biblical studies and archaeology at PLU and the University of Puget Sound. He spent more than 30 years as field archaeologist in Israel/Palestine and on the Crimean peninsula. As part of a lifelong commitment to fostering peace, compassion and social justice, he became a leader in interfaith dialogue. He is survived by his wife, Glynn; children Carrie, Kyle and Caitlin; grandchildren James and Jacqueline. He is also survived by his mother, Mary Haagensen; father, Virgil Olive; and brothers Randy and Jeffrey.

## 1972 | REUNION |

Class Representative – **Molly Stuen**

**Karon Kristine Wendt** died January 19 at her home in Bloomington, Minn. After graduation, Karon took up residence in Bloomington where she obtained her master's degree in technical writing at

the University of Minnesota. At the time of her passing, she was employed by Wells Fargo in Minneapolis. She is survived by her brother, Lawrence Wendt; aunt Sally Miles; six cousins, and numerous nieces and nephews.

**Gary Nordmark** has been named administrator of Bethesda Memorial Hospital. Bethesda Memorial is a 401-bed hospital located in Boynton, Fla. Gary has served as vice president of operations at Bethesda for the past 15 years.

## 1973

Class Representative – **Sandy (Dimler) Privett** and **Karen (Wraalstad) Robbins**

**Tim Brueckner** is celebrating his 34<sup>th</sup> year as pastor of Bethany Lutheran Church in Gold Beach, Ore. As a correction to the spring 2011 issue of Scene, Tim is not retiring and has no intention of retiring or moving on from the congregation.

**Michael Tripp** married Pamela (Cutrone) in a small private ceremony at the Four Seasons Hotel in Las Vegas on October 30. Michael is a senior executive with AIG/Chartis in New York City. Pamela works for Marsh and McLennan Insurance Brokerage, in Morristown, New Jersey. They have three children, Mackenzie (Georgetown Medical School), Jackie (University of Oregon) and Jacob (University of Miami).

**Ed Hansen** is retiring after 37 years in education, 30 of which were spent at Wibaux Elementary School in Wibaux, Mont. At the same time, he taught K-8 physical education, sixth grade science and social studies, and eighth grade history. Ed coached junior high football for seven years and basketball for 15. Ed and his wife, Ruth, have three grown children.

**Joanne (Stueland) Fitzgerald** recently took a study tour to the Holy Land. The group went to Jerusalem, Bethlehem, Megiddo, Masada, Jericho, and Hebron. They also sailed the Galilean Sea, reflected on the many baptisms in the Jordan River, and heard stories from Palestinians and Israelis. It was a trip of a lifetime, and Joanne encourages all PLU grads to make this pilgrimage. Joanne is currently serving Martin Luther Church in Chicago as interim pastor.



**Tana Knudson** married Gus "Smitty" Smith on June 26, 2011, in Ellensburg Wash. Tana currently teaches

at Central Washington University.

**Roger Wiley** has been educating Finnish young people for the past 30 years, half of his life. PLU's slogan of "educating for service" never rang more true! He would like to send greetings from the EuroZone to all his classmates and teammates.

## 1974

Class Representative – **David E. Johnson**

## Picture Perfect



PLU classmates gathered at the home of **Camille (Emerson '59) Eliason and Iver Eliason '55** in Surprise, Ariz., in March. Left to right: **Iver Eliason '55, Camille (Emerson '59) Eliason, Phyllia (Grahm '55) Pejasa, Donald Pejasa, Alta (Prestbye '55) Gaarder, Don Gaarder '55, Kathy (Biery '55) Hoyer, and Gerald Hoyer.** The gang finished the evening with lemon pie made with lemons from the Gaarder's tree in Sun City.

### Would you like to share your pictures with your fellow alumni?

Send pictures to us by e-mail at [alumni@plu.edu](mailto:alumni@plu.edu), or by mail to the Office of Alumni and Constituent Relations, Pacific Lutheran University, 12180 Park Ave. S., Tacoma, WA 98447. Please feel free to call us at 800-ALUM-PLU if you have any questions.



The Seattle-based **Mirinessa Women's Choir** ([www.mirinessa-womenschoir.org](http://www.mirinessa-womenschoir.org)) has many ties to PLU, including these members **Rebecca Rottsoik '72, Beverly Schaal '70, Lynn (Murray '72) Mathews, Karin Swenson-Moore '84, Mary Roe Minor '81, and Dianne (Brain '88) Carlson**, who gathered at a spring 2012 concert.



Best friends and fellow Lutes traveled near and far to celebrate the wedding of **Kristin (Diercks '04) Daniel** in Fort Lauderdale, Fla. In attendance, as pictured, **Claire Zovko, Alayna (Post '02) Broderson, Kristal (Sutton '02) Graham, Megan (O'Brien '02) Nelson, Kristin (Diercks) Daniel, Becca (Ehli '02) Miller, Sarah (Kohn '02) Atchison, and Anna (Edgar '02) Minzel.**

**Josephine Garabato** died Jan. 18 in Manila, Philippines. Born in Botolon, Zambales Province, Philippines, Josephine was a member and lecturer at St. John Bosco Catholic Church, Lakewood, Wash., and a retired elementary school teacher. She taught at Fort Lewis for more than 35 years. Josephine was a dedicated and compassionate educator, having received many honors including the Clover Park School District's most prestigious teacher award, the Golden Acorn Award, for her selfless service to her students, parents and co-workers. She was also very active in Filipino-American community in the Lakewood/Tacoma/Seattle area. She is preceded in death by her husband, 1SG (Ret) Davis R. Garabato. Survivors include her children, Carmencita, **Davis Garabato Jr. '90, Manolito Garabato '81, Franklin and Cynthia**; 21 grandchildren, 19 great-grandchildren; and nine brothers and sisters.

**Christian G. Larsen** died Jan. 30. Christian graduated from PLU with a teaching degree in the new field of special education. He started his teaching career in Denmark in a school for autistic children. After four years, he returned to the states where he taught special education in Portland, Ore. There, Christian obtained his master's degree in psychology. Christian and his family then moved to Gig Harbor, Wash. in 1981. He earned his credentials to become a school psychologist and for many years he served as lead psychologist in the Peninsula School District. Because of his excellence, the Peninsula District awarded him the distinguished Ellen Fay Award in 2004. Though his passion was teaching, his number-one delight was being father to his three children, and being a grand-

father. He is survived by his children, **Nicolai Larsen '99, Anna-Lisa and Kristina**; granddaughter Abrielle; sister Marianne Larsen; and mother Karen Larsen.

**Kevin O'Connell** died March 14. He worked for Cominco American for 18 years, and then went on to ZAKS Designs as a senior forecast analyst. Kevin was preceded in death by his parents. He is survived by his wife, Suzanne, of 27 years; their two daughters, Erin and Kaitlyn, who will always be his pride and joy. He is also survived by one sister, Karen (Harvey) Koch; niece Laurie and nephew Chad; cousins Sheila Brady and John O'Connell; and brothers-in-law John and Mike Alice.



**Joanne (Chalk) Uppendahl** recently published a book of poetry, "She Who Gathers Stones."

### 1975

Class Representative – **Lauralee Hagen**

### 1976

Class Representative – **Gary Powell**

### 1977 | REUNION |

Class Representatives – **Leigh Erie and Joan (Nelson) Mattich**

**Anne (Pearson) Washburn** died in Feb 20 in Honolulu. She was born in Baguio, Philippines, received her bachelor's degree in nursing, and became a nurse after her graduation. She is survived by

husband John; mother Ruther Pearson; and brothers Casey, William and Jack Pearson.

**Martha (Schaefer) Ellis** was recognized for 30 years of continuing service as the editor of the Oak Harbor (Wash.) Lutheran Church newsletter. As recognition for this, as well as her wide array of other duties, Feb. 12 was named "Martha Schaefer Ellis Day" at Oak Harbor Lutheran Church. Martha also writes scripts, directs and creates costumes for Advent and other seasonal dramas, as well as the annual Sunday School Christmas Program.

**Ken Flajole** has been named the New Orleans Saints' defensive secondary coach. Ken was a linebacker on the PLU football team, graduated with a bachelor's degree in education, and began his coaching career with the Lutes right after graduation. Ken is married to **Teri (Whitmer '78) Flajole**, and has two daughters, Kelly and Kori.

### 1978

Class Representative – **Pete Mattich**

**Susan (Boris) Brewer** died Mar. 9. After graduating from nursing school at PLU, Susan married Dr. Craig Brewer in 1978 and bore and raised three children, Cory Brewer, Kelsey Gordon and Ashley Parsons. They were the premier focus of her life. She then worked as a receptionist, nurse and office manager in her husband's medical practice until Nov. 2011. Susan was an animal lover and her other main interests were cooking and her role as a leader in Women's Bible Study Fellowship. Besides her husband and children, Susan is survived by her parents and two younger sisters.

### 1979

Class Representatives – **Dave and Teresa (Hausken) Sharkey**

### 1980

Class Representative – **Vacant**



**Michael Haglund M.D., Ph.D.**, professor of neurosurgery and neurobiology was promoted to professor of global health

at Duke University in Durham, N.C. Haglund has spent the last five years building the neurosurgery programs in Uganda and Rwanda and has raised donations of more than 6 million dollars to refurbish the operating rooms and intensive care units at the two national hospitals in Kampala, Uganda, and Kigali, Rwanda. He leads teams of 20-30 medical professionals twice per year to East Africa to perform complicated neurosurgical procedures and train the local neurosurgeons in the latest brain and spine surgical techniques. He also has developed training programs for local medical students to train in neurosurgery. Haglund spends about one month per year in East Africa doing his mission work.

### 1981

Class Representative – **Dean and Susan (Lee) Phillips**

**John Taylor** died Feb. 1. John earned his master's degree at PLU. John was the first in his family to graduate from college. He married the love of his life, Alice Frances Scott in 1960, and they celebrat-

ed 52 years of marriage days before his death. As a young father, John packed up his family and traveled through 48 of the continental United States by the time his five children graduated from high school. He and Alice zigzagged across the country making lifelong friends along the way. John is survived by his wife Alice; five children, Donald, Terri, Janice, son-in-law Larry, Joyce, son-in-law Calvin, Robert, and daughter-in-law Tanya Taylor. He also leaves behind 12 grandchildren and three great grandchildren.

**Ernest "Richard" Kellenberger** died Sept. 8. Richard had many careers throughout his life, but the two careers that brought him the most joy were with Andrew's Clock and Watch Repair Shop at Sears for 10 years, and with the Transportation Security Administration for eight years. Richard liked playing and watching many sports, and in particular he was a great fan of badminton. As a humble man, Richard never touted his professional affiliation with badminton and the work-related recognition he often received. Richard will be missed terribly by his surviving wife **Marie Nguyen-Kellenberger '93**; siblings Cheryl and John Jr.; sister-in-law Regina; niece Kathryn and nephew Paul; and dog Penny.

**Steve Smith** was appointed to the University Place City Planning Commission in January.

**Munro Cullum** was elected president of the Neuropsychology Division of The American Psychological Association. Munro is professor of psychiatry and neurology and neurotherapeutics, and chief of psychology and neuropsychology at the University of Texas Southwestern Medical Center at Dallas. He and his wife, **Heike (Wilhelm) Callum**, will be celebrating their 30th wedding anniversary this summer.

## 1982

Class Representative – **Paul Collard**

**Candace "Candy" (Armstrong) Mumm** was awarded the Dean's Forum Scholarship from the Gonzaga Graduate School of Business. She graduated with Beta Gamma Sigma honors in 2011, attaining her master's in business administration with an additional entrepreneurial concentration. She is currently CEO of Smartland, with operations in Washington and Arizona.



**Phil Komornik**, who is the administrator for Rotary International's Travel and Hosting Fellowship, and

his wife, Susie, celebrated their 40th wedding anniversary with the renewal of their vows in their home parish, St. Mary of the Mills in Laurel, Md. In May they traveled to RI's convention in Bangkok, Thailand, and took a 12-day tour in the Chiang Mai Provence. Over the years they have been heavily involved in International Youth Exchange,

which includes Intensive English Language Program students from PLU. They have hosted 42 high school and college-age students from nine different countries. They now enjoy hosting fellow members of their Rotary Fellowship in their home between Baltimore and Washington, D.C.

## 1983

Class Representative – **Dave Olson**

**Karen Weathermon** was named Outstanding First-Year Student Advocate by the National Resource Center for The First-Year Experience and Students in Transition organization. She was recognized at the center's annual conference on the First-Year Experience where she also delivered a presentation on assessment of Washington State University's Common Reading Program for freshman.

**John Krogh** died Nov. 21. John graduated from the University of Washington and later earned his master's in business administration from PLU. John served as a commissioned officer in the U.S. Air Force from 1968 to 1989 and flew transport in the Vietnam War. John was an airline pilot for United Airlines until he retired in 2005 as a captain on the Boeing 777. He continued flying as the chief pilot at Aurora Aviation and then at Global Aviation. John married his wife, Jody, in 1988. John was an active outdoorsman who enjoyed books and documentaries about World War II and the Lewis and Clark expedition. John is survived by his wife, Jody; two daughters, Julie and Jaclyn; and siblings Carol, Fred and David.

## 1984

Class Representative – **Mark Christofferson**

**Steve Lucky** retired in 2009 as a colonel from the headquarters U.S. Air Force, located at the Pentagon. He served 25 years in uniform, most recently as the leader of the Air Staff Strategic Plans and Policy Division. In this capacity he was responsible for Air Force compliance with all international treaties, coordinating Air Force activities to counter the proliferation of weapons of mass destruction, and was the Air Force focal point for space, nuclear and missile defense policy. After retiring, he joined Systems Planning and Analysis, Inc., where, as a deputy group leader and senior policy analyst, he helps lead and grow the company's analytic support to the Air Force and the Office of the Secretary of Defense. Steve and his wife, **Cheryl (Ulleland '83)**, live in northern Virginia with their two daughters, Caitlyn and Christine. Caitlyn is a sophomore at Virginia Tech, and Christine is a junior at the Thomas Edison High School for Science and Technology. Cheryl is a senior budget analyst managing the execution of the budget for the National Transportation Safety Board.

**Geoffrey Gatlin** died Jan. 24th in Tacoma. Geof was raised in Lakewood, Wash., and later received his bachelor's in education from PLU. During his studies at PLU he dated, and soon married, Karen

# In Memoriam

## 1931

**Herman "Bud" Anderson** died March 20

## 1941

**Irma (North) Bendock** died April 17

## 1947

**Ruth (Towe) Johnson** died Feb. 3  
**Elaine (Enwiller) Cook** died March 29

## 1948

**Sylvia (Blomelie) Neal** died March 7

## 1951

**Ludwig Siqueland** died April 8

## 1953

**Ellen (Hessen) Grewe** died Feb. 23

## 1954

**Donn Koessler** died March 2

## 1956

**Donald Morris** died March 25

## 1958

**Norman R. Fiess** died on Feb. 12

## 1959

**Ronald C. Jorgenson** died Aug. 11, 2011

## 1960

**Don Stattum** died Feb. 15

## 1962

**Joy (Suckew) Meya** died Feb. 14

## 1963

**Joanne Bjork Klein** died Jan. 29

## 1964

**David Kniefel** died Oct. 2

## 1967

**Marjorie Kelly** died Aug. 14, 2011

## 1968

**Trudy (Enstad) Campbell** died Jan. 23

## 1969

**Robert "Bob" Beller** March 28

## 1971

**Jack Olive** died Jan. 9

## 1972

**Karon Kristine Wendt** died Jan. 19

## 1974

**Josephine Garabato** died Jan. 18  
**Christian G. Larsen** died Jan. 30  
**Kevin O'Connell** died March 14

## 1977

**Anne (Pearson) Washburn** died Feb. 20

## 1978

**Susan (Boris) Brewer** died March 9

## 1981

**John Taylor** died Feb. 1  
**Ernest "Richard" Kellenberger** died Sept. 8, 2011

## 1983

**John Krogh** died Nov. 21

## 1984

**Geoffrey Gatlin** died Jan. 24

## 1987

**Anabel (Tengonciang) Negma** died April 22

## 1997

**Charles Saffy** died March 8

## Friends and Family

**Doris (Schnackenberg) Bohman** died March 23. She met **Walter Charles Schnackenberg, Jr. '37** and they were married on her birthday at Central Lutheran Church in Spokane in 1941. After they moved to Parkland where Walter became a professor of history at PLU. Together they raised four daughters, and Doris loved her role as wife and mother. They were active members of Trinity Lutheran Church in Parkland, and life revolved around church, university and family. Upon Walter's death in 1973, she moved from her job at Mortvedt Library at PLU to the Financial Aid Office, where she worked until her retirement in 1985. In 1986 she married Morris Peter Bohman of Lewiston, Idaho, a friend from childhood. He moved to Lakewood, where they lived until his death in 2000. She is survived by her daughters **Ann (Schnackenberg '64) Grady, Mary (Schnackenberg '66) Cattani, Dikka (Schnackenberg '72) Berven** and Gjertrud Schnackenberg; sister-in-law Elizabeth Strom, brother-in-law William House; many nieces and nephews; and stepchildren Janice Keller, Julia Bohman and Bruce Bohman, and their five children.

**J. Robert Wills**, former PLU provost, died on April 6. Bob became provost in July of 1989 and served in that capacity until 1994. After leaving PLU he became the dean of the Herberger College of Fine Arts at Arizona State University. He was known for his creative energy and love of the theater. He published widely and received many professional and leadership honors. He wrote, directed and produced hundreds of plays and was known for casting multicultural performances. As a PLU administrator Bob was always supportive of his academic colleagues and gave his deans and directors wide latitude in program oversight. He was deeply committed to academic excellence, and to increasing ethnic diversity at PLU. Bob will be remembered as bright, dedicated, caring and cordial by colleague and friends alike.

# What's new with you?

> Please fill out as much information below as possible, including city of residence and work. Feel free to use another piece of paper, but please limit your submission to 100 words. Photos are welcome, but only one photo will be used, and on a space available basis. Notes will be edited for content. Photos must be prints or high quality jpegs. Please, no reproductions or copies from other publications.  
**Deadline for the next issue of Scene is Sept. 1, 2012.**

NAME (LAST, FIRST, MAIDEN) \_\_\_\_\_ PLU CLASS YEAR(S) \_\_\_\_\_

SPOUSE \_\_\_\_\_ SPOUSE'S PLU CLASS YEAR(S) IF APPLICABLE \_\_\_\_\_

STREET ADDRESS \_\_\_\_\_ IS THIS A NEW ADDRESS? YES  NO

CITY STATE \_\_\_\_\_ ZIP \_\_\_\_\_

PHONE NUMBER \_\_\_\_\_ E-MAIL WEBSITE POST ON THE ALUMNI E-MAIL DIRECTORY YES  NO

## Job Information

JOB TITLE \_\_\_\_\_ EMPLOYER \_\_\_\_\_

WORK ADDRESS \_\_\_\_\_ CITY, STATE, ZIP \_\_\_\_\_

WORK PHONE \_\_\_\_\_ WORK E-MAIL \_\_\_\_\_

## Marriage (no engagements, please)

SPOUSE'S NAME (FIRST, MIDDLE, MAIDEN, LAST) \_\_\_\_\_

DATE/PLACE OF MARRIAGE \_\_\_\_\_

SPOUSE'S OCCUPATION \_\_\_\_\_

## Birth

CHILD'S NAME (FIRST, MIDDLE, LAST) \_\_\_\_\_ BIRTHDATE (M/D/Y) GENDER MALE  FEMALE

SIBLINGS/AGES \_\_\_\_\_

## Promotions/Awards

NAME \_\_\_\_\_

TITLE OF POSITION/COMPANY/AWARD/ DATE ASSUMED \_\_\_\_\_

> **MAIL TO:** Office of Alumni and Constituent Relations, PLU, Tacoma, WA 98447-0003; **FAX:** 253-535-8555; **E-MAIL:** [alumni@plu.edu](mailto:alumni@plu.edu); **Internet:** [www.plualumni.org](http://www.plualumni.org). Please limit to 100 words.

Thompson. Geof is survived by his wife, Karen; children William and Amanda; granddaughter Kaylee; brothers Gene and Jerry Gatlin '89; and his parents.



**Tom Layson** is back in television at KBTC-TV as a producer, host and reporter for the PBS affiliate's public affairs program called "Northwest Now." Tom will also be part of the station's documentary unit, as it continues to evolve. Tom lives in Puyallup, Wash., with his wife, Shari. Their two adult sons live in Helena, Mont.

**Carolyn (Crawford) Brooks** co-authored a book, "Partnerships and Collaborations in Public Library Communities: Resources and Solutions." The book was released in December 2011.

## 1985

Class Representatives – **Janet (Olden) Regge** and **Carolyn (Plocharsky) Stelling**



**Shannon Brinias** took a new job as news anchor at KOVR CBS-13 in Sacramento, Calif. It's the culmination of a professional career that has taken her from Nevada to Washington, and most recently to Colorado Springs, Colorado. Shannon's husband, Mark, and daughter, Emma Marin, are enjoying the warmer climate and activities in Northern California. As a four-time winner of the Colorado Broadcaster's Association Best Anchor Team award, and named as a 2011 Women of Influence in Colorado Springs, Shannon is looking forward to continuing to make a difference, with God's help, in her new locale.

## 1986

Class Representative – **David Carlson**

## 1987 REUNION

Class Representatives – **John Carr** and **Lisa Ottoson**

**Anabel (Tengonciang) Nagma** died April 22. She is survived by husband, Elmer Nagma.

## 1988

Class Representative – **Brenda Ray Scott**

**Mark A. Miller** was named vice president and chief information officer at Plum Creek Timber Company, Inc., in February. Mark will lead the company's information technology team and the services it provides the company.

## 1989

Class Representative – **Brendan Rorem**

## 1990

Class Representative - **Erick Benson** and **Mark Kurtz**

## 1991

Class Representative – **Jim Morrell**

**Patricia "PJ" Jarvis** was recently named the National Association for Sports and Physical Education (NASPE) Elementary Physical Education Teacher of the Year. This award is given for outstanding teaching performance and the ability to motivate today's youth to participate in a lifetime of physical activity. PJ believes his education at PLU was an amazing foundation for his success as an educator.



**Jim Morrell** was named the new president and CEO of Peninsula Credit Union in Shelton, Wash. Jim had been at the iQ Credit

Union in Vancouver, Wash., for the past 14 years, most recently as senior vice president of support services. Jim has a long history of industry involvement and recognition. He is a past chair of the CUNA Technology Council and also has been on user boards for Online Resources Inc., and Symitar. He also has served on the Northwest Credit Union Association's Future Leaders Task Force and the Filene Research Institute's i3 Group. He was named 2010 Distinguished Credit Union professional of the year by the Washington Credit Union League, and the 2008 information technology executive of the year by Credit Union Times.

## 1992

Class Representative – **Rebecca Benson**



**Lucinda Wingard** recently published her debut novel, "The Turnaround Bird," set in Timbuktu. It's about what a modern African-American family finds out about their roots. It's about fathers and daughters; it's about fate and magic. It's about the West African adage "Wisdom is knowing what to pick up from your past."

## 1993

Class Representative – **Barbara (Murphy) Hesner**

## 1994

Class Representatives – **Catherine (Overland) Hauck** and **Dan Lysne**

**Zara (Eicholtz) Walters** was promoted to lieutenant colonel in the United States Army in June.

## 1995

Class Representative – **Janet (Huss) Nelson**

**Gennette Quan Simmons** was named the new marketing manager of Coast360 Federal Credit Union in Guam.

**Calvin Goings** is assuming new responsibilities as the assistant associate administrator for the United States Small Business Administration. In this position, he is helping to direct SBA's national field operations as a key member of the agency's leadership team. Previously Calvin served as a Regional Administrator for SBA leading the Obama administration's small business programs and initiatives in the four state northwest region of Alaska, Idaho, Oregon and Washington. He has received numerous awards and citations for his years of public service including the Citation of Leadership Award from the Small Business Incubator, the Distinguished Service Award from the Washington State Patrol Troopers' Association, the Outstanding Citizen Award from the Washington Jaycees, the Legislator of the Year Award from the Washington Council of Police and Sheriff's Deputies, the Cascade Stewardship Award from the Cascade Land Conservancy, and Distinguished Alumnus award from PLU.

### 1996

Class Representatives – **Steve and Kimberly (Nadon) Leifsen**

**Tom Churchill** was named in July the superintendent for Meridian Schools in Bellingham, Wash.. Tom was previously the superintendent of the Hood Canal (Wash.) School District.

### 1997

Class Representatives – **Andy and Stephanie (Merle) Tomlinson**

**John Meers** was named in March the principal of A.J. West Elementary school in Aberdeen, Wash. He completed both his master's of arts in education and principal's certificate at PLU.

**Charles Safly** died Mar. 8. He served four years as a hospital corpsman in the U.S. Navy after high school. He loved shooting pool and was an avid bowler. He earned his bachelor's degree from Seattle University and then attended PLU where he obtained his master's degree in counseling. He is survived by his daughter, Cori Safly; sister, Karen Johnson; brothers, Ron Safly and John Safly; and many nieces and nephews.

### 1998

Class Representative – **Shannon (Herlocker) Stewart**

### 1999

Class Representative – **Julie (Johnston) Bulow von Dennewitz**

### 2000

Class Representative – **Ashley Orr**

**Jeremy Johnston** has been chosen for membership into The National Trial Lawyers: Top 40 Under 40. This is extended exclusively to those individuals who exemplify superior qualifications, trial results, and leadership as a young trial attorney. Jeremy has also been chosen for inclusion on the 2012 Washington Rising Star list for Super Lawyers. No

more than 2.5 percent of lawyers in Washington are named to the list.

### 2001

Class Representative – **Michael Mauss and Brianne (McQuaig) Vertrees**

**Christopher "Kit" Shanholtzer** was named the Washington State Industrial Technical Educators Association's Teacher of the Year.

### 2002 | REUNION |

Class Representatives – **Nicholas Gorne and Brian Riehs**

**Justine Colombo** and **Mark Hammond** celebrated their divorce in style on Aug. 1, 2011. They plan to continue being stellar parents and dedicate this dissolution to the "American Dream."

**Jamelyn "Jamie" Keatts** is currently working as a mental health therapist in the Seattle area. See [www.jame-lynkeatts.com](http://www.jame-lynkeatts.com) for more specifics.



**Kirstin (Vorhes) Sellers** married Ryan Sellers on Aug. 29, 2009, in Yachats, Ore. The wedding was an intimate event with family and a few close friends. Lutes in attendance

included **Stephanie Trudel '02**, **Justine Colombo '03** and **Mark Hammond '03**. Justine Colombo served as the matchmaker, introducing the couple in 2005. After purchasing their first home in University Place, Wash., Ryan and Kirstin happily added two fur-children to the family in 2010, dogs Lulu and Juno. In 2011, Kirstin graduated from PLU for the second time with the completion of her master's of science in nursing. Both Ryan and Kirsten work at the Valley Medical Center in Renton – Ryan as an interactive patient care manager for the GetWell Network, and Kirstin as a clinical nurse specialist for Med-Surg.

### 2003

Class Representative – **Elisabeth (Pynn) Himmelman**

**Matt Shimkus** portrayed C.S. Lewis in "Freud's Last Session" at Taproot Theatre Company in Seattle, Wash. This two-man play is based on an imagined conversation between the father of a modern psychologist and a young "up-and-coming" Christian academic. This was Matt's second turn as a "dead theologian" at Taproot. Last spring he played Dietrich Bonhoeffer in "The Beams Are Cracking." Matt currently works with Microsoft 343 Studios in the development of Halo 4, both as a script consultant and a motion-capture actor. He lives in Tacoma, with his writer wife, **Emilie (Rommel) Shimkus**, and their 1-year-old daughter, Robin.

### 2004

Class Representative – **Tammy Lynn Schaps**

**Jace Krause** and wife, **Ellen (Over) Krause**, recently moved to Portland, Ore., with their son, Leo (2). Ellen is a nurse at Emmanuel Hospital in the Neonatal ICU.

### 2005

Class Representative – **Michael Steele**



**Jedd Chang** and his wife, Michelle, have departed on a 27-month commitment with Peace Corps as youth program volunteers in Jamaica in March. Their updates can be found at <http://simplyintentional.wordpress.com>.

**Kendall Blair** completed his traditional rotating internship in June, and started his three-year residency in internal medicine at South Jersey Healthcare in Vineland, N.J.

**Mike Ellison** married Katie (McVie) Ellison on Sept. 5, 2010. The couple now lives in La Mesa, Calif.

### 2006

Class Representative – **Jenna (Steffenson) Serr**

**Jenna (Steffenson) Serr** and husband, **Matt Serr '05**, are both teaching kindergarten after completing their master's of education at PLU in 2010 and 2011, respectively.

**Mallory (Dolbeer) Haynes** married Kyle Haynes in June 2011 in Molalla, Ore. **Amanda Clark '07** was the maid of honor.



**Stacey (Stone) Semmler** married Matthew Semmler in July 2011 in Spokane, Wash. Lutes in attendance were **Geoff Bullock '87**, **Ruth (Christensen) Bullock '85**, **Kathryn Bullock '12**, **Tiffany (Stone) Cook '02**, **Kimberly Stone '12**, **David Swoish '06**, **Amy (Anderson) Swoish '07** and **Elizabeth Chase '06**.

### 2007

Class Representative – **Kaarin Praxel and John McClimans**



**Jennie (Krauszer) Barge** married Barrett Barge on June 11, 2011. She is working on her master's degree in speech language pathology at Louisiana State University.

**Katie Crawford** graduated in 2011 from the University of Sydney (Australia) with a master's degree in peace and conflict studies. She is currently working in the U.S. Program for the Bill and Melinda Gates Foundation.

**Kathleen Flenniken** was named Washington state's poet laureate for 2012-2014. Kathleen is also president of the nonprofit Floating Bridge Press, which teaches poetry and publishes Washington State poets.

**Katie Oxenford** was promoted to senior account executive at Waggener Edstrom Worldwide in February.

**Nolan Ball** and his wife, Emily, currently serve in the Peace Corps in Nong Khai, Thailand. They will be there through March 2014. Nolan is in program development and Emily is teaching English.

**Shawn Blocker** was promoted to Unit 3 manager for site clean-up in the U.S. Environmental Protection Agency in April. Unit 3, which serves Alaska, Idaho, Oregon, and Washington, is responsible for about one-third of the superfund cleanups for the U.S. EPA.

### 2008

Class Representative – **Christy Olsen Field and Courtney Stringer**

**Kevin Stark** recently earned his master's degree in cross-cultural communication from the University of Sydney.

**Eric Allen** is currently attending graduate school studying geology at Utah State University, in Logan, Utah.

**Leann Conley** is the director of choirs at Chabot College in Hayward, Calif.

**Jill Russell** was recently hired as a social media producer for Fisher Communications in Seattle. Her job entails managing the life and style section of KOMOnews.com, and maintaining the social media pages and websites for STAR 101.5-FM and KVI-AM.

### 2009

Class Representative – **Maren (Anderson) Johnson and Amy Spieker**

**Kori Loomis** is currently working in rural Japan where she teaches English to



children from kindergarten to high-school level. In her free time, Kori studies the Japanese instruments koto and shamisen, for which she regularly gives local performances. She also enjoys playing taiko drums with her local taiko group, often at festivals. On weekends she learns Japanese traditional dance, shibu. She also enjoys speaking Japanese everyday and exploring the beautiful countryside around her.

**Nathan Hulings** was recently hired as communications specialist for The Boeing Company. His new position entails creating videos and correspondence for the company's internal news service.

### 2010

Class Representative – **Nick Caraballo and Jillian Foss**

# class notes

continued

**Kelsey Liddle** married **David Horne** on Sept. 24, 2011, at Mountain Springs Lodge in Leavenworth, Wash. **Allison Valenta '10** was the maid of honor. Kelsey is currently working with the Tacoma Convention and Visitors Bureau. She will soon join David in St. Louis, where he is working with Burns and McDonnell. PLU staff and alumni in attendance included Dr. Robert Wells, **Josh Baeth '05**, **Bridget (Roth '04) Baeth**, **Paul Woolsey '08**, and **Chad Hall '10**.



**Anne-Marie (Shea) Leichsenring** married **Seth Leichsenring '09** on May 21, 2011, in Yelm, Wash.

**Tara (Spain) Pasechnik** married **Dan Pasechnik** on Nov. 12, 2011, in Seattle. **Katrine Myhre '11** was the maid of honor.

## 2011

Class Representative - **Caroline Olsen, Adam Story** and **Lynsey Tveit**



**Katherine Alegado** recently became a marketing manager at HindSite Interactive, Inc. She would like to thank PLU professors

**Diane Harney** and **Amy Young** from the School of Arts and Communication for their continuous guidance and encouragement. The position of marketing manager for a company is one that she only dreamed of. Through hard work, determination and amazing mentors, she was able to make that dream a reality immediately after graduation.



**Andrew Reyna** married **Jenna Callaway Reyna** on July 6, 2011, in Salem Ore. Jenna is currently working at Legacy Emanuel Hospital in Portland, Ore., as an RN at the family birth center. Andrew attends medical school at Oregon Health and Science University.



**Hannah (Hutchins) Comerford** married **Jason Comerford '09** on Oct. 22, 2011.

## 2012

Class Representative - **Kelvin Adams** and **Caitlyn Jackson**

## Future Lutes

### 1995



**Sara (VanNice) Sandlin** and husband, **Mark Sandlin '96**, announce the birth of their son, **Paul Preston**, on Dec. 15.

### 1996



**Farah (Hussain) Ardmore** and husband, **Daniel Ardmore**, announce the birth of their daughter, **Aeva Elizabeth**, on Nov. 28.

She joins their two boys, **Gabriel**, 9, and **Aaron**, 4, as a happy addition to the family.

### 1997



**Angela (Phay) Anderson** and husband, **Jonathan**, welcomed the birth of their second son, **Leif**, on Feb. 25. **Leif** joins

brother, **Soren**, 4.

### 2000



**Cody Johnson** and his wife, **Kira (Dove) Johnson '01**, announce the birth of their daughter, **Katheryn Dove**, on Jan. 6.

**Kate** joins her big brother, **Will**, who is 3 years old.

### 2001



**Rich Kuehn** and wife, **Julie**, announce the birth of daughter, **Natalie Mae**, on Dec. 22. **Natalie** joins big sister, **Haylie Pearl**, 3.

### 2001



**Jill (Schnaser) O'Hanlon** and **Brian O'Hanlon '00** celebrated the birth of their daughter, **Emerson Grace**, on Dec. 11. **Jill**

works part-time at Customink.com as a sales representative, and **Brian** works for the U.S. Department of Commerce as an international trade specialist.



**Tyler Imig** and wife, **Christen**, welcomed the birth of their son, **Elias Pa'ahana Imig**, on Jan. 14. **Elias** joins big sisters,

**Jordyn**, 4, and **Saige**, 2.



**Brooke (Mueller) Hartman** and husband, **Craig Hartman**, celebrated the birth of their daughter, **Hazel Anne**, on Feb. 26 at Alaska

Regional Hospital in Anchorage, Alaska.



**Carter Smithhart** and wife, **Lisanna (Seim '06) Smithhart**, celebrated the birth of their daughter,

**Audrey**, on March 6.

### 2002



**Nathan** and his wife, **Cailyn (Akers) Aune**, celebrated the birth of their third child, **Grayson Aune**, on June 27, 2011. **Grayson**

is adored by his older siblings, **Jane**, 4, and **Jensen**, 2.



**Eleanor (Morton) Munich** and husband, **Will Munich**, announced the birth of their daughter, **Johanna Elise Munich**, on

Dec. 31. **Johanna** joins big brother, **Anders**, 3.



**Berit (Olsen) Martin** has two children, **Aksel**, who was born in August 2011, and **Asher**, who is now 3 years old.

### 2003



**Jacob Himmelman** and **Elisabeth (Pynn) Himmelman** proudly announce the birth of **Jens** (pronounced yhenz)

**Timothy Pynn**, on March 20.



**Wescott Collom** and **Martina (Isop) Collom** celebrated the birth of their son, **Keaton Collom**, on March 29.



**Jillian (Clark) Luebke** and husband, **Joshua Luebke**, welcomed the birth of their second son, **Andrew**, on Aug. 23, 2011. **Andrew** joined

big brother, **Ryan**, 4.



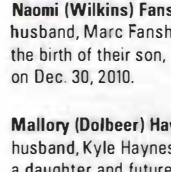
**Andy Loe** and wife, **Erin (Feutz '04) Loe**, along with their son, **Riley**, welcomed **Addison Lauren Loe** on Dec 8th, 2011

### 2004



**Dena Hedegaard** welcomed the birth of her daughter, **Estela Guevara**, on Nov. 29.

### 2006



**Naomi (Wilkins) Fanshier** and husband, **Marc Fanshier**, welcomed the birth of their son, **Carter Warren**, on Dec. 30, 2010.

**Mallory (Dolbeer) Haynes** and husband, **Kyle Haynes**, welcomed a daughter and future Lute, **Lyla Grace**, on March 6.

### 2007



**Amanda (Petersen-Anderson) Jacobson** gave birth to a son, **Beauregard "Beau" Jacobson**, on Oct. 9.

**Daniel Smith** and wife, **Katelyn**, welcomed the birth of their daughter, **Madelyn**, on Jan. 30.

### 2008



**Kristina (Nelson) Leopold** and husband, **Matthew**, welcomed the birth of their daughter, **Maddison Renee**, on Oct. 31. S

## one-on-one

continued from the back page

women are portrayed, led Ramos to become interested in how language is used to describe other things.

"When I was in grad school, I started to focus my work on animals and how they are portrayed in language," Ramos said.

The field of studies she draws from is critical animal studies with a focus in "anthropomorphism" - the attribution of human characteristics and purposes to inanimate objects animals, plants or pretty much anything that isn't human. She also focuses on its counterpart "animalization," which is the attribution of animal behaviors - like crawling - to human beings.

It wasn't long before Ramos noticed how often descriptions used to describe animals are attributed to humans to disparage gender, class and race.

"We can all think of a few ways animal descriptions have been used to describe women," Ramos said. "We tend to think of ourselves as supreme to animals."

Ramos' examination of language - and particularly how women and animals are described - intersected with immigration issues on the day she noticed the word "crawling" in that "New York Times" article. Ramos understood the issues being a Mexican-

American, but she never thought she'd want to examine them as part of her profession.

"I always thought I'm glad I don't do scholarship on immigration because it would get me too fired up," she said. "But that was when it all came together."

At PLU, Ramos has been able to combine her interests in language and immigration through courses she teaches, as well as through the university's Common Reading Program. This year for the first time, the entire campus - students, staff and faculty - is reading the same book at the same time, exploring immigration, race and gender identity through the novel "Into the Beautiful North" by Luis Alberto Urrea. Urrea will be on campus September 13th to speak on the topic and his book.

The novel features a young Mexican teenager, Nayeli, who notices that, just as her father did, many of the men of her village have gone to the United States to find work. While watching the classic 1960s Western film "The Magnificent Seven," she decides to head north and recruit her own "Siete Magnificos" to repopulate and protect her hometown.

According to Ramos, the journey Nayeli takes is fascinating, heartbreak-

ing and even a little bit hopeful, because a character like Nayeli is developing her sense of identity without the benefit of her father's guidance.

For Ramos, stories like "Into the Beautiful North" are appealing because they are not simply a good read, but they accurately show just how complex the world really is.

And those complexities can be lost, she believes, when people casually use loaded words to describe people who are different from them - such as describing an immigrant to be "crawling" like an animal.

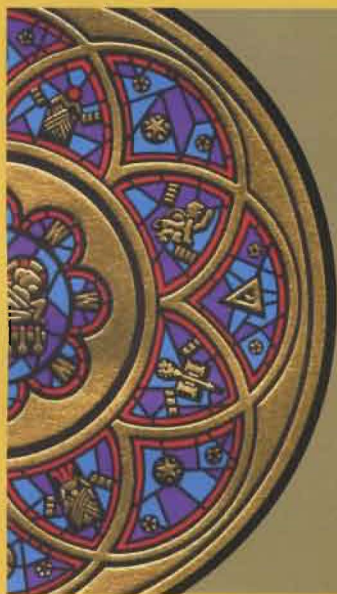
"I think on my better days as a teacher I do make that connection," Ramos said. "That's what's great about PLU students. They want to make those connections."

"They (students) really value education in ways you don't get at all institutions."

She feels a sense of accomplishment when she starts seeing students use terms in class and descriptions that she's conveying, effortlessly. As if it was just the way they always spoke.

"I don't need them to think like me at the end of the course, but I want them to consider and question the concepts," Ramos said. ☐

-Chris Albert



PACIFIC LUTHERAN UNIVERSITY  
A PLU CHRISTMAS

# A CHILD IS BORN

## TACOMA

Saturday, December 1, 8 p.m.  
Lagerquist Concert Hall, PLU

Sunday, December 2, 3 p.m.  
Lagerquist Concert Hall, PLU

Friday, December 7, 8 p.m.  
Lagerquist Concert Hall, PLU

## SEATTLE

Monday, December 3, 7:30 p.m.  
Benaroya Hall

## PORTLAND

Tuesday, December 4, 7:30 p.m.  
Arlene Schnitzer Concert Hall

TICKETS ON SALE NOVEMBER 1

[www.plu.edu/christmas](http://www.plu.edu/christmas)  
253-535-7787

CHANGE SERVICE REQUESTED

**PLU Scene Address change:** If this copy of Scene is addressed to your son or daughter who no longer maintains a permanent address at your home, please notify the Office of Alumni and Constituent Relations with his or her new mailing address. You can reach us by phone at 253-535-7415 or 1-800-ALUM-PLU. You can also fax us at 253-535-8555 or e-mail [alumni@plu.edu](mailto:alumni@plu.edu) with the new information. Thanks!

## one-on-one

Language shapes how we see the world



Assistant Professor of English Adela Ramos' examination of language – and particularly how women and animals are described – intersected with immigration issues on the day she noticed the word “crawling” referring to an immigrant in a “New York Times” article.

Adela Ramos will never forget the day when, as a graduate student at Columbia University in New York City, she was reading a “New York Times” article about a Mexican immigrant who was described as crawling under a fence to make it into the United States.

The word “crawling” struck Ramos as an odd way to describe a person crossing the border.

People aren't typically described that way, animals are.

“It wasn't the journalist being derogatory,” Ramos, an assistant professor of English, said of the article. “But it was animalizing the immigrant. It's one way of dehumanizing people – for sure.”

In fact, Ramos noted that using the word “crawling” to describe an immigrant was not simply limited to this one instance – it had become accepted. For Ramos, that was troubling.

“Language says a lot about how we see the world,” she said.

Ramos has been fascinated with language and how it is used in literature since her time as an undergraduate student at Universidad Nacional Autónoma de México. It began with a teacher who brought to life 18th century British novels – and in particular, the role women played in the development of such novels.

Her interest in understanding how