

Lowell Knutson Takes ASB Presidency

The Mooring Mast

Lunde, Tobiason, Ogren Also Chosen

Lowell Knutson will be PLC's student body president for the coming year!

A two-day total of 812 ballots were cast in the annual Associated Student Body elections held Tuesday and Wednesday. A run-off vote was necessitated Wednesday when no candidate received a majority of the ballots in the contests for ASB vice-president, secretary, and treasurer.

Knutson, popular pre-theology student, ace southpaw pitcher, football toter and basketball letterman, won the coveted presidency on the first ballot when he copped 63 per cent of the vote—a clear majority—in a field of three.

Torgeson Is Saga Editor

Also triumphing on the first ballot were George Torgeson, JoAnn Nodtvedt, and Karl Bachner in the races for Saga editor, associate editor, and business manager, respectively.

The closest decision of the two-day elections came in the contest for ASB secretary. Maria Ogren, present junior class secretary from Everett, nosed-out Marjorie Anderson in the run-off balloting by a shivering three vote margin.

Run-off polling was also necessary in the balloting for ASB vice-president and treasurer. Rolfe Lunde will be Lowell's understudy, while Ray Tobiason, education major from Longview, will handle the ASB funds for the coming year. Incidentally, Rolfe, pre-theology student and vice-president of the Pacific Northwest region of the Lutheran Students Association, will be the only member of the present ASB council who will retain a position on the student governing group. At present, Rolfe is representative to the council from the junior class.

Large Vote For Naomi Roe

Naomi Roe, comely red-haired freshman, was named for cheer leader on 335 of the 443 ballots cast in the first day of voting. Three others—Jens Knudsen, Marilyn Myklebust, and Carol Schuler—were selected in the run-off balloting Wednesday.

An amazing office-holding sequence was perpetuated with the election of
(Continued on Page Four)

Senior Day Observance To Be Held

Senior Day will be observed at Pacific Lutheran College this spring for the first time in the history of the institution. This was the announcement made yesterday by the class of '50.

"Senior Day is one of the biggest events of the year at many American colleges," stated Lloyd Cleven, senior class president and one of the main backers of the Senior Day observance. "It is our hope that this event will become a tradition on the PLC campus."

The date set for Senior Day is Friday, May 26. Those serving on the planning committee which will select other committees for the newly inaugurated day are: Dick Svare, Emely Sholseth, Edna Haglund, Duane Fods, and Lloyd Cleven.

The main event of the observance will be an hour and one-half program in Memorial Gymnasium. The program, to take place in mid-morning, will feature all senior talent.

1,000 View May Day Fete

Before a throng of over 1,000 spectators, Camilla Loftness was crowned "Queen of the May" at the annual Pacific Lutheran College May festival yesterday afternoon in the gymnasium. Carl Schmitt, president of the Tacoma Young Men's Business club, performed the coronation ceremony.

The festival began with a procession of the royal court to the strains of Hear's "Pomp and Circumstance," led by the college orchestra under the baton of Harlem G. Moen. The queen and her attendants marched down an aisle formed by senior girls dressed as ribbon bearers.

Seated on a throne decorated with flowers and flanked by her attendants, the queen reigned over the festival program.

Delbert Zier of Renton, student body president, opened with the reading of the May Day proclamation. The coronation followed.

The program included vocal duets by Mahlon Read of Missoula, Mont., and Doris Johnson of Longview; and numbers by the male quartet, composed of Jason Boe, Los Angeles; James Williamson, Olympia; Richard Svare, Parkland; Harold Jones, St. Helens, Oregon.

Three groups of folk dances were presented by physical education students.

Miss Rhoda Young, teacher of physical education for women, was in charge of the festivities.

The parents of the queen, the Rev. Mrs. G. O. Loftness of Corte Madera, Calif., and formerly of Tacoma, journeyed north to Tacoma to attend the festival.

DRG Girls To Go On House Party Today

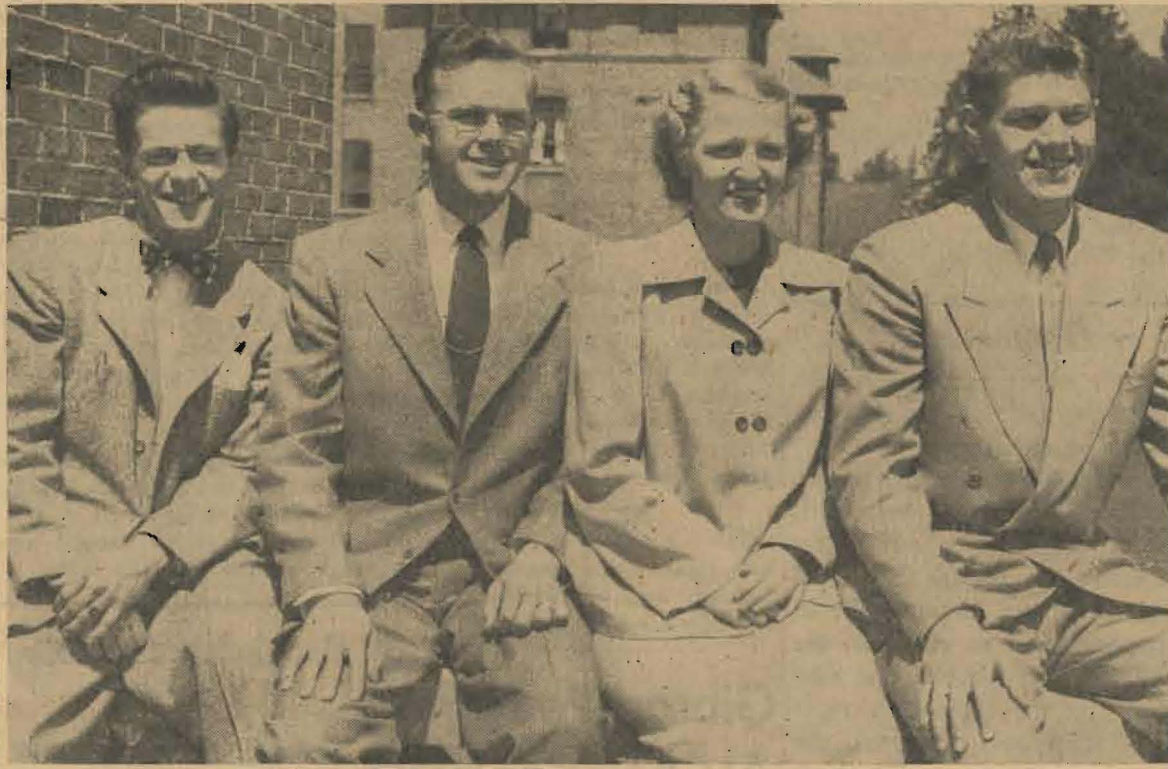
A whole weekend of swimming, fishing, horseback-riding, golf, tennis and roller skating await the members of Delta Rho Gamma as they depart today for their annual house party, according to Edna Sackett and Grace Keys, co-chairmen for the year.

The girls are headed for Lake Alderess, one of the Northwest's most beautiful and well-kept resorts.

Those girls who have signed up for the event are Jo Friday, Grace Keys, Edna Sackett, Margie Carlson, Virginia King, Anne Demers, Carol Schuler, Shirley Sagehorn, Yvonne Smith, Amy Brown, JoAnn Gramo, Shirley Odegard, Shirley Molter, Dorothy Molund, Lenora Surface, Phyllis Grenz, Pat Stewart, Donna Johnson, Eunice Eide, Marilyn Patterson, Dorothy Sweet, Marge Anderson, Beverly Sjoboen, Lee Krumm, Betty Hall, Harriet Olsen, and Shirley Shull.

Chaperoning the girls will be Miss Betty Berg and Mrs. Pauline Schaffer.

"When a true genius appears in the world, you may know him by this sign, that the dunces are all in conspiracy against him."—Swift.



PICTURED ABOVE are next year's Associated Student Body officers who were elected this week. They are, left to right, President Lowell Knutson of Seattle, Vice-President Rolfe Lunde of Everett, Secretary Maria Ogren also of Everett, and Ray Tobiason of Longview. All four are juniors. Strangely, the presidency, secretaryship, and treasurership are nothing new for Lowell, Maria and Ray. They have already served together in these respective positions as class officers in their freshman and junior years.

All-School Cruise On Sound Tonite

Alpha Phi Omega, new national service fraternity on the PLC campus, is sponsoring an all-school cruise on Puget Sound this evening. This will be the first social event sponsored by the new group which was organized last February.

The Gallant Lady has been chartered and will leave the Tacoma docks at 7 p. m. PLC couples will have the opportunity of viewing the new Tacoma Narrows Bridge at close range as the cruiser chugs through the Narrows on its way to Anderson Island. After docking at the island the excursioners will partake of refreshments.

Tickets at \$1.75 per couple may be purchased in the front hall of Old Main today. The committee planning this cruise consists of Bob Cook, John McBride, and Roy Virak. Howard Cook is president of Alpha Phi.

Martin To Present Mother's Day Songs

Charles Martin, leading tenor soloist with PLC's Choir of the West, will present a Mother's Day recital next Sunday at Normanna Hall, So. 15th and K Streets in Tacoma. The program, which will begin at 7:30 p. m., is complimentary to the public.

Marilyn Hanich, PLC pianist, will accompany Mr. Martin.

Included in the program will be songs typical of Mother's Day.

Mr. Martin is one of the better known soloists of the Pacific Northwest. During the war he sang for the late President Roosevelt and Admiral Leahy at a command performance in the Hawaiian Islands.

Sunday's program is being sponsored by Hans Lavik, Tacoma travel bureau agent, and Walt Young, Parkland gift shop operator.

3 One-Act Plays To Be Staged Today

Three well-known one-act plays will be presented this afternoon in the SUB at 3:30 by the members of Mrs. Pauline Schaffer's Dramatic Production and Speech 54 classes. The names of the plays cannot be printed do to legal technicalities.

Merlin Zier is production manager. Each of the dramas is under the direction of three different members of Mrs. Schaffer's classes.

Helen Huswick, Val Johnson, and Phyllis Maltzahn will appear in the first play, a fast moving comedy con-

AWS To Give 3-Awards At Tea

The Associated Women Students of Pacific Lutheran College will hold their annual Award Tea next Thursday at 3:45 in the SUB.

This year there will be extra attractions to the tea with the awarding of three scholarships. The annual AWS scholarship will be awarded to a PLC freshman girl, while the Women of the Rotary and the Ladies of the Kiwanis will award scholarships to two Tacoma high school girls.

The officers for the coming year will be announced by Doris Johnson, president of AWS. Spurs and Tassels will tap their new candidates into the two organizations.

Dorothy Keebler is the general chairman of the tea. She has appointed as chairmen of the committees: Iris Knutson, clean up; Donna Grytness, food; Mary Lynn Myklebust, decorations; Thelma Jorgenson, program; Marianne Stacy, publicity; Janet Marie Olson, invitations.

Beverly Wiggen will act as mistress of ceremonies.

cerned with the complications of Henrietta Brewster's (Helen Huswick) study of psychoanalysis. Karl Bachner, Robert Erickson, and Bob "Stretch" Ferguson are directors.

Appearing in the second play, a tense drama of social forces centering around a strike meeting, will be 13 drama and speech students. They are Bob Brass, Glen Werner, Dorothy Sweet, Allan Hatlen, Bob Brog, Howard Shull, Harriet Olsen, Jack Day, Vernell Hance, Art Broback, Ernest Johnson, Rolfe Lunde, and John Waldorf.

The directors are Morry Hendrickson, Howard Shull, and Margaret Kutz.

Bachner Plays Captain

The final drama is concerned with a hazardous voyage of a steam whaling ship. Karl Bachner plays the ship's captain and Margaret Kutz appears as his wife. Taking parts of rebellious crew members are Howard Shull, Morry Hendrickson, Bob Crumbaugh, and Bob Ferguson. The directors are Marguerite Eastvold, Genevieve Purvis and Bob Crumbaugh.

Members of the various committees working on this afternoon's production are: lighting, Howard Worley (chairman), Arnold Gregerson, Martin Hellberg and Bob Marvanek; make-up, Marilyn Pflueger (chairman), Eleanor Hansen, Connie Aune, and Jo Friday; programs, Robert Weaver; publicity, Lloyd Harvey and Dave Olson; usherettes, Carolyn Kjelstad, and Phyllis Ranch; properties, Arnie Helgeson (chairman), Carolyn Kjelstad, Phyllis Ranch, Lee Krumm and Bud Cairns; and set, Jens Knudsen, David Thorpe, Bob Fromader, Bob Broadland, Don Jackson, and Charles Martin.

The Mooring Mast

Published every Friday during the school year by students of Pacific Lutheran College.

Office: Student Union Telephone: GRanite 8611
Subscription price—\$1.50 per year

Printed on the Campus by La Crosse Printing Company 4

EDITOR.....DON GANNON
ASSOCIATE EDITOR.....MARLENE SCHWENKE
BUSINESS MANAGER.....PHIL FALK

Editorial Staff

Campus News: Shirley Molter, editor; Gene Anderson, Arthur Arp, Bob Cook, Harriet Olsen, Alan Hatlen, Glenna Nelson, Joann Nodtvedt, Naomi Roc.

Sports: Jim Kerns, editor; Bob Belland, Bob Ferguson, Mell Smedley.
Copy Editor: Carol Schuler.

Business Staff

Advertising: Bob Ferguson, Bob Gregorson.

Circulation: Marion Cummings, Naomi Roc, Kay Schell.

What Do You Do For Democracy?

It seems that sooner or later every editor turns to politics and government as an outlet for verbal expression. The editor of the Mooring Mast submits the following remarks:

A perusal of almost any textbook of the philosophy of political science will reveal that a democratic form of government, as opposed to a totalitarian form of government, is founded on the supposition that the common man—the average individual of the masses—is intelligent enough to govern himself. We in the United States swear by this supposition as we denounce the totalitarian state in which the governing is done by the few who possess dictatorial powers. We say that the ordinary man is intelligent enough to pick for himself those who shall make the laws, govern the country, and deal with other nations. We think that we know enough about men, and events, and ideas so that we, as a democracy, can make wise decisions as to the steps our government is to take.

"Do College Students Support Democracy?"

But do we know enough to govern ourselves wisely? Do we, not as average Americans but as college students—supposedly the source of the intelligencia of the land—know enough about men, events, and ideas to choose capable leaders, to voice sagacious opinions, and to direct the course of our democratic power?

Yes, you say. Surely we, here in an American institution of higher learning, must be well enough informed and wise enough to guide our democracy if anyone is.

And yet, have you examined yourself? Have you looked about you? Do you and your classmates bother to study national events and problems? Are you one of those proclaimed leaders of tomorrow who stares blankly when the names Owen Lattimore, Earl Browder, and Senator Tydings are mentioned? Are you one of those normally talkative colligians who shuts up obviously because of ignorance when someone turns the conversation to the Baltic incident involving an American navy plane? Do you, as an "educated" American, have any sound factual basis for your pros or cons on Communist teachers in American schools, socialized medicine, the Atlantic Pact, the Marshall Plan, aid to China, or better still, do you even bother to have any pros or cons at all?

"Can You Give This Testimonial?"

In short, are you able to view yourself and your associates and say, "Yes, we know enough about national and world leaders, about the events which are making history, and about the issues facing our nation, to wisely direct the destiny of our democracy. Democracy during our lifetime need not fear. We are taking the trouble to see that we know enough and do enough to insure the success of our system of government."

Enable yourself to say this with a clear conscience, and you will then begin to live the type of government in which you profess to believe.

Chapel Quotes

By Arthur Arp

"Man may think he knows himself, but outside of the revelation of God's Word he does not know himself."—Dr. Knorr.

"Jesus did not condemn the use of material things; he only condemned putting them first and foremost in our lives."—Mr. Ramstad.

"We want you to leave this college fervent in spirit, serving the Lord; spiritually, physically, academically . . ." — Dr. Eastvold.

Engagements

As guests filed around the refreshment table, the names of "Cam and Tom" atop tiny artificial flowers on streamers of a yellow and green centerpiece announced the engagement of Camilla Loftness and Tom Humphrey, May 4, at the home of Mrs. Marv Harshman. At the summit of the maypole was mounted a larger flower in which the ring rested.

Those attending were: Mrs. Loftness, Mrs. A. W. Ramstad, Mrs. E. A. Larson, Mrs. Don Wick, Mrs. Frank Cey, Evangeline Ordahl, Shirley Rovang, Beth Gottwald, Ruth Lebeck, Florence Brandstetter, Amy Knutson, Emely Sholseth, Iris Knutson, Bracc Foegge, Pearl Jacobson, Dorothy Martenson, Mrs. Harshman, and Maria Ogren.

Miss Vonny Denslow, PLC graduate of '49, recently announced her engagement to Arthur E. Tabler of Reedley, California. Vonny is the daughter of Mr. and Mrs. F. G. Denslow of Craigmont, Idaho. Mr. Tabler is the son of Mr. and Mrs. Arthur Tabler of Reedley.

The engagement of Dick Behm to Ivah Jane Florence was recently announced. Both are residents of Seattle. Dick is a freshman at PLC.

Gibson Performs At Choir Banquet

Members in formals and suits congregated last Friday at Crawford's Sea Grill for the annual banquet of the Choir of the West.

Among the yellow flowers decorating the room were pennants naming the midwest towns and cities visited on the choir's 1950 tour. Small trains were placed in the center of the banquet table as a reminder of the recent trip.

Beatrice Konop kept everyone happy as mistress of ceremonies. The

As You Like It
POP'S
POP CORN

Mrs. Frisbie's
BAKERY

For Good Bakery Products
710 So. 38th St. GA. 7591

C. O. Lynn Co.
MORTUARY
717 TACOMA AVE. Phone MAIN 7745

Raymond
Electric Company

Engineers - Contractors
813 Pacific Ave. BR. 1712

The CLEAN Place to Buy and Store Your Meat at Lower Prices . . .

PARKLAND LOCKERS

A. J. (Slim) STERN
11012 Pacific Ave. GR. 7111

"Campus Studio" To Be Opened Monday

Next Monday, a new enterprise will be initiated on the PLC campus, namely, "Campus Studio." Two students at PLC, Roland Ytreide and Allan Laursen, have taken over the school's photographic setup.

In addition to the Photo Lab there

program was begun by Doris Johnson and Mahlon Read who blended their voices in "Romance." Jim "Hoot" Gibson gave pantomimes of "None But The Lonely Heart" and the "Blue Danube" accompanied by Spike Jones. His interpretation was hilarious.

During the program Mr. Gunnar Malmin, Choir Director, was presented with a briefcase. It was a token of the group's appreciation for all he had done this past year. Flowers were presented to the guests: Mrs. Malmin, Mrs. Ramstad, and Mrs. Nesvig. Beatrice Konop was also given flowers. The pennants from the decorations were given to the graduating seniors as a remembrance of their choir "daze."

Favors announcing the engagement of Glenna Nelson and Louie Brunner were served with the desert.

Co-chairmen of the banquet were Jim Williamson and Dick Svare.

Brookdale Lumber
Company

Brookdale GR. 8669

Winthrop
Men's Shop

784 Broadway MA. 6635

STOP AT

VERN'S

For

DELICIOUS HAMBURGERS
HOT DOGS -- JUMBO MILK-
SHAKES -- FRENCH FRIES

at

Ninth and Pacific

Remember Mother with flowers

Stella's Flowers

WE DELIVER

Parkland
Centre

GRanite
7863

PARKLAND AUTO PARTS

IN CONNECTION WITH

Parkland Fuel Oil & Service Station

GRanite 8112

Parkland, Wash

TRY FLETCHER'S — *The Vets Do*

Groceries -- Meats -- Vegetables
Frozen Foods

FLETCHER'S MARKET

FREE DELIVERY

GRanite 85

will be a studio for portrait glamour, and any other type of photographic work, and in addition, they will be able to take orders for anyone who so desires, whether it be portraits, candid shots of any kind, or something extra special to their setup at the college, they will be able to give reasonable prices to those who are in any way connected with the college.

The air we breathe is 79 per cent nitrogen and 21 per cent oxygen.

Wedding
Announcements
LaCrosse
Printing Company

Tune In:
Your Own
CAMPUS
RADIO THEATRE

- COLLEGE OF PUGET SOUND
- PACIFIC LUTHERAN COLLEGE
- STADIUM HIGH
- LINCOLN HIGH
- SUMNER HIGH
- PUYALLUP HIGH
- VISITATION VILLA
- FEDERAL WAY HIGH
- CLOVER PARK HIGH
- ST. LEO'S HIGH
- ST. JOSEPH'S COLLEGE of NURSING

Every Wednesday
During School Year
6:30 P.M.
1360 ON
KMO YOUR DIAL
*Rebroadcast — KTB1
9:30 A. M. Saturday

Sponsored by

Your TACOMA CITY LIGHTS

Lute Diamond Team Takes 13-12 Thriller

took 10 innings to do it but the defeated St. Martin's Rangers baseball game at Olympia on Friday. The final score was Pacific Lutheran 13, Rangers 12.

Corvin, starting pitcher for Rangers, held the Lutes to one run in the first five innings. The Lutes were hitting him hard but the Rangers were keeping him out of the game by some fine fielding.

Kasemeier started on the mound for the Lutes and was greeted by revived Ranger offense. The Lutes garnered ten hits and eight runs during the first five innings. Gerry Hefty pitched the last two innings and gave up two runs. This was Hefty's second appearance this season.

Lowell Knutson came in the ninth inning with a man on third, and drove in a run. In the tenth inning, Ranger third baseman, Knutson drove in a run. A fine relay play by the plate, Hagenson to

Swanson to Hatley, threw him out at the plate as he tried to stretch his hit into a homer.

Ed Daniszewski, the fourth pitcher for St. Martin's, was credited with the defeat. Lowell Knutson received the win.

Jack Johnson and Glen Huffman both garnered three hits for the Lutes. Swanson and Reiber both got two hits. Ray Ewing, Bob Bartholomew, Mike McNamara, and Burney Harvey all gathered two hits for the Rangers.

SHORT SCORE:
Pacific Lutheran 13 12 5
St. Martin's 12 13 8
Kasemeier, Hefty (8), Knutson (9) and Johnson, Hatley (9). Corvin, Cissel (7), Frazier (8), Daniszewski (9) and Fuchs, Basch (7).

Sport-Rate

One of the leading hitters on this year's Lute baseball team is Gene Reiber, right fielder. Gene is a 19 year old sophomore majoring in education. His fields of study are P. E., social sciences, and science.

Gene was a three year letter winner in baseball at Lincoln high in Tacoma. He played first base as a prep ball player.

Gene received additional experience playing with the Tacoma Eagles in the Valley League the past two years. Last year he also played in the Tacoma City League. Paul Reiman was a standby at first for the Lutes this season so the hard-hitting Reiber was converted into an outfielder.

A husky six footer weighing 195 pounds, Gene has a lot of power at the plate. He is a left handed thrower but does his batting right handed.

League Discussion Is Led By Knutson

Lowell Knutson, leading hurler on the Lute Diamond forces and president elect of the PLC student body, was one of the discussion leaders at the Lute League convention held recently in Tacoma. Knute lead the discussion of recreation. This group, one of the largest at the convention, appeared to be very much impressed by Lowell's knowledge of the subject.

Allen Dahl, a representative from Silverton, Oregon, was one of those well pleased with the discussion. As Allen put it: "He gave a good talk that was filled with practical ideas that any group could use. I didn't expect to hear any college athlete speak so well."

Lowell caused a near riot when, in answer to a question about more active participation in leagues, he came up with, "I've never been in a league where there were enough girls."

The Boy Scouts of America was incorporated under the laws of the District of Columbia, February 8, 1910.

Racket Men Split With Martin's, Chiefs

PLC's tennis team dropped a close match with the Chieftains of Seattle University Tuesday in Seattle. The score was 4-3. This evening the series one to one. Wednesday the Lutes defeated the Rangers of St. Martin's 5-2 on the Rangers' home court. Both of these matches were played without the service of one of the Lute starters, J. Bowron, who was injured May 5 in a car accident.

Results Seattle U.-PLC:
Gabrielson defeated Hupprich 6-8, 6-1, 7-5.

Keller (SU) defeated Spitzer 6-3, 6-3.

Angevine (SU) defeated Larson 6-2, 7-5.

Trydenlund (SU) defeated Nielson 6-4, 2-6, 6-1.

Nothstein defeated White 6-3, 7-5. Angevine and Hupprich defeated Gabrielson and Spitzer 6-0, 6-0.

Larsen and Nielson defeated Keller and Trydenlund 6-4. No second match.

Results St. Martin's—PLC:
Gabrielson defeated Arne Fox 6-2, 6-2.

Spitzer defeated Bob Rhodes 6-3, 10-8.

E. Baer (SM) defeated Larson 6-4, 6-4.

Nielson defeated B. Bowker 5-7, 6-4, 6-2.

Eaton (SM) defeated Nothstein 6-4, 6-0, 6-4.

Gabrielson and Spitzer defeated Eaton and Rhodes 6-3, 7-5.

Larsen and Nielson defeated Fox and Baer 12-10, 6-1.

LSA Group To Visit Lutherland Sunday

The LSA is planning an informal outing Sunday evening, at Lutherland, according to Marilyn Pflueger, LSA president. Buses will leave Old Main at 6 o'clock. Upon arrival at the camp, the remaining daylight hours will be spent in playing games, and other recreation. Loren Rude will be in charge of the softball game.

At dusk the group will gather at the beach to toast marshmallows. The evening will close with a fellowship hour around a bonfire.

Patronize Your Advertisers

When You Want Office Supplies
C. Fred Christensen
STATIONER
913 Pacific Ave. BR. 4629
Tacoma, Wash.

PARKLAND
MEN'S SHOP
DON STRANDEMO
Garfield Street Parkland

NEAL E. THORSEN
TRICKS - JOKES - MAGIC
Costumes - Tuxedos - Serpentine
926½ Broadway MA. 4861

MEN'S SUITS—With Extra Slacks
BOTH \$39.50

REMEMBER IN TACOMA IT'S
THE NEW, GREATER
IRVING'S CLOTHES SHOP
919 MARKET ST. THE ONE AND ONLY

Sport-Lite

By Kerns

A great many former Lute athletes are playing ball in this area. Wayne "Buck" Brock, former football and baseball letterman at Luteville, is doing mound duty with Spokane of the Western International League.

Vern Morris, well known Gladiator football and baseball player, is holding down the shortstop position for the Sixth Avenue team in the Tacoma City League.

The South Tacoma entry in the City League is well supplied with former Lutes. Duane Rose, catcher; Jack Bratlie, second base; Howard Davis, third base; Chuck Loete, first base; and Jim Rediske, centerfield are all one-time performers for Lutheran nines.

A great many of the players that are playing for PLC now will be playing after the close of the college season. Paul Reiman, Bud Hatley, and Gene Reiber, all played in City League competition last season. The City League is composed of many former pro ball players and it's nice to know that our college men can stand out in such experienced company.

Among the former pro players that are competing are: Earl Kuper, Ray Spurgeon, Bob Kohout, Bob Sayles, Jack Lynch, Marv Scott, and Pete Sabutis. Although these are only names to many people it does give you an idea of the class of ball that is played in Tiger park every evening when the pro "Tigers" are out of town. These City League games are played at 8 p. m. and admission is only 25 cents.

The average adult rate of heart beat is 65 to 75 per minute.

EVERGREEN CONFERENCE (Western Division)

	W.	L.
Pacific Lutheran	7	3
Puget Sound	7	4
Western Washington	6	4
British Columbia	2	6
St. Martin's	1	5

(Eastern Division)

	W.	L.
Central Washington	5	1
Eastern Washington	2	3
Whitworth	0	3

Games This Week

Friday

Western at Pacific Lutheran (double-header), 1:30.
British Columbia at Puget Sound (double-header), 1:30.

Saturday

Whitworth at Central (double-header), 1:30.

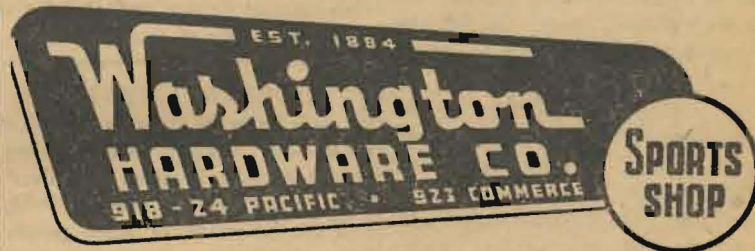
Sunday

British Columbia at St. Martin's (double-header), 1:30.

10 Press Clubbers Sport Service Pins

Members of the Press Club are proudly sporting the new press club pins recently received. Because of the host of activities being jammed into the remaining weeks of the semester, no initiation is to be held. Among those entitled to wear the pins for outstanding service in the field of journalism are: Bob Belland, Steve Kennedy, Arthur Arp, Helen Hedin, Shirley Molter, Bob Ferguson, Phil Falk, Marlene Schwenke, Carol Schuler and Glenna Nelson.

DR. D. M. CLISE
DR. M. A. TWEIT
Optometrists -- Visual Training
Parkland Centre Bldg., Suite 17
GR 7050



GRAND OPENING

Saturday, May 13

Martens Automotive Service

AND GENERAL REPAIR

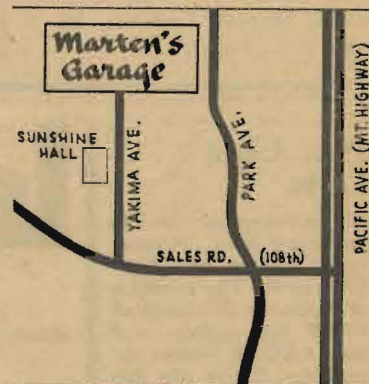
Complete Facilities for
SELF-SERVICE REPAIR

We furnish private stall, hand tools, vise, creeper, drop cord, and supervision.

Only 50c per hour
(\$2.00 minimum)

When you buy necessary parts from our parts department.

ONE BLOCK NORTH OF
SUNSHINE HALL
GR 6047



Is Fifth In Martin's Relays

300 athletes competed in the St. Martin's relays last Saturday at Olympia. Fourteen records broken and two tied. Eastern, the favorite, came through with 31½ points to take first place, CPS followed with 31½. Central third with 20, St. Martin's 18, PLC 15, Western 11, 7½, Seattle Pacific 4½, UBC 2, and Oregon of Education, 1.

Outstanding Athlete award to Eric Beardsley of Central who took first place in the javelin and first in the pole vault. He held both the previous records for events and received a watch warm-up jacket for his efforts. First place winners received tie medals, while other athletes placed received ribbons.

Winners were Dick Lewis in the high and low hurdles, Smith, also of CPS, in the discus shot, Fred Carpine, Eastern, mile and 880, and Bill Casey of Martin's in the 100 and 220.

Members of their team were the regular events to their special relay teams. The Lutes were only able to place second places.

ers Dumped By ers, Chiefs

The golf team went down to defeat this week bowing to Seattle St. Martin's. The Chiefs of Seattle U. smashed their way to victory Tuesday in Seattle. Martin's barely downed the Chiefs 6-4 Wednesday afternoon.

PLC	PLC
Oden	0
Severeid	0
Hoiby	1
Eng	0
Thompson	0
Dinsmore	0
PLC	PLC
Oden	1
Hoiby	0
Thompson	2½
Severeid	3
Eng	0

29 Thespians Take Committee Posts For All-School Play

Mrs. Pauline Schaffer, faculty director of The Doll House, PLC's all-school play to be staged May 25, 26 and 27, announced this week that 29 students have been appointed to committee positions for work on the production.

Assisting Mrs. Schaffer with the appointments were Jon Ericson, Doll House business manager, and Rosella Albrecht, vice-president of the Curtain Call Club.

Appointed publicity chairman was Bob Brass, active education major and shot-putter on the Lute track squad. "These committees take an important part in producing the play, but they receive little publicity for their work," Bob stated.

Thorliefson Stage Chairman

Those appointed are as follows: stage, Phil Thorliefson (chairman), Bob Crumbaugh, Margaret Kutz, Hazel Johnson, and Rosella Albrecht; lights, John Unis (chairman), Morry Hendrickson, Vangie Ordahl, and

17 Confirmed At Trinity Sunday

Seventeen college young people were confirmed and seven members of the confirmation class were baptized at the candle light services held Sunday in Trinity Lutheran Church.

Chosen to assist at the sacrament of Holy Baptism were the ushers, Gene Lundgaard and Harry McLaughlin, members of previous confirmation classes.

Those baptized were: Danny Charles Shine and Pamela Lynn Waldorf (children), Gloria Jean Shine, Jerry Charles Shine, Mary Louise Ferguson, Blaine Edward McKanna, William Muse, Shirley Mae Odegard, and Lenora Gale Surface.

Lowell Wolheuter sang a solo, "O, Jesus, I Have Promised." In the sermon, given by Dr. Eastvold, it was stated, "There are times when God gets so near to us that we don't talk about him." Dr. Eastvold emphasized to members of the class that "seeing each other" should be reminders of seeing Christ.

Official Pins Presented

Prayer books were presented to the confirmands as gifts from the college. The Lutheran Students' Association cabinet presented the group with official pins.

Those confirmed were: Ruth Beverly Anne Bush, Thane Goodrich Eckler, Mary Louise Ferguson, Richard Frank Ferguson, Henry Leonard Habegger, Robert Gene Macready, Blaine Edward McKanna, Ruth Virginia Moe, William Muse, Shirley Mae Odegard, Harriet Jean Olsen, Jack Dover Selfors, Gloria Jean Shine, Jerry Charles Shine, Lenora Gale Surface, John Phillip Waldorf, and James Edward Williamson.

Chosen as president of the class was Willy Muse. Sponsors for the baptism were J. P. Pflueger, A. W. Ramstad, Magnus Nodtvedt, M. S. Monson, E. C. Knorr.

Karl Bachner; properties, Val Johnson (chairman), Helen Jensen, Howard Worley, Bob Ferguson, and Olive Isaksen. Andy Worley, stage manager, will supervise the work of these three committees.

Other committees are: publicity, Bob Brass, Val Johnson, and Doris Johnson; program, Elaine Simons; refreshments, Janet Peake (chairman), Mary Arnold, Richard Sand, and Bob Cook; costumes, Harriet Olsen, Bob Johnson, Howard Worley, Janet Peake, and Myla Lund; and make-up, Jim Williamson, Edna McCall, Mary Larson, Janice Johnson, and Le Bishop.

Jon Ericson will supervise the publicity, program, and refreshment committees. Miss Jean McGregor will direct the work of the make-up and costume groups.

ASL Tabs Meineke Prexy For Fall Term

It was election time for Alpha Sigma Lambda at their last regular meeting of the year held May 10 in CB-1. Officers were selected to serve for the coming fall semester. Relieving Ed Berndt at the president's post will be Bob Meineke, junior from Endicott, Wash. He will be aided by Lorraine Cummings, vice-president; Maria Ogren, secretary; and the second member of the Cummings' clan, Marion, as treasurer.

Plans for the annual spring picnic were also made. The date set is this Sunday, May 14. The outing is to be held at Benbow lake. The group, consisting of club members and their guests, will leave from school at 1:30. Arrangements have been made for recreation, including the annual inter-club softball games, and also for an adequate supply of food.

STUDENTS ATTENTION

It is up to the students of Pacific Lutheran College, when doing their shopping in stores that advertise in the Mooring Mast, to bring to the attention of these people that their ad was seen in the school paper. Remember "PATRONIZE YOUR ADVERTISERS."

**98th ST
HARDWARE
STORE**

**BUCHANAN'S
SHOES**

(formerly McElwains)

SMART SHOES
FOR
MEN AND WOMEN

760 Broadway

BR 1862

Chorus Gives Concert At Zion Lutheran

The PLC chorus made its home appearance at Zion Lutheran Church of Tacoma Wednesday night.

The first group of songs consisted of "The Heavens Resound"—Beethoven, "The World Believing"—Sateren, "A Christmas Cradle Hymn"—Christiansen, "Jesus, Lover of My Soul"—arranged by Malmin, "Judge Me, O God"—Mendelssohn.

Olaf Malmin, accompanied by his mother, Mrs. Dorothy Brann Malmin, displayed his talents with a few selections on the violin.

The chorus continued the program with the singing of "Today There Is Ringing"—Christiansen, "In Heaven Above"—arranged by Christiansen, "O Rejoice Ye Christians Loudly"—Bach, "There Is a Balm in Gilead"—arranged by Dawson, "Beautiful Savior"—arranged by Christiansen. Following a slight intermission the choristers returned to conclude their program with "Break Forth, O Beauteous, Heavenly Light"—Bach, "Be Merciful to Me"—Schnackenberg, "A Joyous Christmas Song"—arranged by Hokanson, "Praise to the Lord"—arranged by Christiansen, and "The Lord Bless You"—Lutkin.

Soloists for the evening were George Little, tenor, Sylvia Narveson, soprano, Shirlyann Sandin, alto, and Ernest Johnson, tenor.

Knutson New Prexy

(Continued from Page One)

Lowell Knutson, Ray Tobiasson, and Maria Ogren. These three, respectively, were chosen for the offices of president, treasurer, and secretary of their freshman, and junior classes. Their election to ASB offices this week marks the third time that these same people have been chosen to serve together as president, treasurer, and secretary.

The DONUT BAR

TAKE A DOZEN TO
THE GAME

Parkland
GR. 9950

Tacoma
HI. 3081

Complete
Banking
Facilities
in the nearby
Lincoln District



LINCOLN BRANCH
3808 South Yakima Ave.

Member Federal Deposit Insurance
Corporation

Peterson, Fynboe In Recital Mon.

Evelyn Peterson, sophomore from Portland, Oregon, will be presented in an organ recital Monday night at 8 p. m. in the SUB. The assisting artist for the evening will be baritone Carl Fynboe of Parkland who will be accompanied by Amy Knutsen.

For her first group of numbers Evelyn will play "Prelude in G Major," by Bach; "O Sacred Head Now Wounded," Bach; "Trumpet Tune and Air," Purcell; "Sheep May Safely Graze," Bach; and "Prelude and Fugue in C Minor," Bach.

Carl Fynboe will first sing "Tu Lo Sai" by Torelli and "Die Mainacht" by Holty.

Evelyn will return to the spotlight with "Sonata in D Minor" by Guillemant, followed by two more selections by Carl. His two final numbers will be "O! Man River," Kern, and "I Love Life," Mank-Zucca.

"Jubilate Deo," Silver; "Prelude in

Divinum Mysterium," Caudry; "Tchaikowsky, and Offertoire de Ste. Cecile No. performed by Miss Peterson will closing selections of the recital. Evelyn Peterson is a student of Dorothy Brann Malmin.

"The chameleon, who is fed upon nothing but air, has animals the nimblest tongue."

The volume of blood in a varies from four to five quarts.

WEDDINGS - CORSA
FUNERALS

Stella's Flowers
Artistry in Flowers
Parkland Center GR.

Centre Cleaners
FOR ALL CLEANING
Parkland Centre Building
One block from Campus
Carl and Ingrid Fynboe, pr.

SEARS
Roebuck & Co.
1148 Broadway BR. 4

BROADWAY
Sports Center
739 BROADWAY
The Biggest and Best Ham
in Town

**Lou
Johnson**

Tacoma's Favorite
Specialty Shop

755 Broadway
16 No. Tacoma Ave.
Lakewood Center

**DANIELS
HARDWARE**



ON THE HIGHWAY CORNER
PACIFIC AVE. & GARFIELD



**Parkland
XXX**

Featuring the . . .
Merchants Lunch, 50c

STUDENT MEAL TICKET
A \$5.50 Value for \$5.00

Two Blocks North on Mt. Highway



THREE-DAY SERVICE
on Laundry, Cleaning and Repairing

24-HOUR SERVICE AT PLANT

Fashion Cleaners

PICK UP and DELIVERY

GA. 3372

3820 Yak

Net Cost . . .
Low

Life insurance is issued to Lutheran Men, Women, and Children ages from birth to 65. The members of Lutheran Brotherhood OWN the society, and they ALONE receive the earnings. There are NO stockholders.

Lutheran Brotherhood

Legal Reserve Life Insurance for Lutherans

MINNEAPOLIS 2,

HERMAN L. EKERN, President

MINNESOTA

GARFIELD STREET
Phone GRanite 5221

JESS W. THOMPSON
NYER URNESS

PARKLAND
Washington

Build Your
Estate Now!



Your Future
Starts Today