

# PACIFIC LUTHERAN UNIVERSITY MOORING MAST

SEPT. 10, 2010

www.plu.edu/~mast

VOLUME LXXXVII NO. 1

## Convocation



PHOTO BY TED CHARLES

Conductor Jeffrey Bell-Hanson and the Pacific Lutheran University Symphony Orchestra kick off Opening Convocation Sept. 7 in Olson Auditorium. They set the stage for student and faculty recognition, highlights from the 2009-2010 academic year and an address from President Loren Anderson.

## Green Dot

Haley Miller  
COPY EDITOR  
malemh@plu.edu

This fall Pacific Lutheran University has joined the bandwagon in adopting the Green Dot program, a rapidly-growing national campaign to end power-based personal violence.

Fifteen PLU faculty and staff members from various departments have been trained to educate the student body about Green Dot. Student leaders and orientation guides attended Green Dot 101 informational sessions as part of their training this summer, and the Green Dot Takeover was scheduled as an orientation activity for first-year students last week.

"Green Dot is about having people all over campus ... to create a larger sphere of influence," said Allison Stephens, associate director of Student Involvement and Leadership.

According to the campaign's website, a green dot is defined as "any behavior, choice, word or attitude that counters or displaces a red dot of violence—by promoting safety for everyone and communicating utter intolerance for sexual violence, interpersonal violence, stalking and child abuse."

A green dot could be as little as posting a Facebook status with an anti-violence message or as big as stepping in before a friend makes a drunken decision at a party.

A red dot, conversely, represents an action or non-action that promotes a culture of violence.

"In Green Dot, there is no neutral ... if you're a bystander, then you're tolerating violence. But if you're a green dot, you're doing something, anything," Stephens said.

No different than students from universities all over the country, a large number of PLU students deal with partner violence and sexual assault either directly or indirectly sometime during their college career. Research shows that female college students experience disproportionately high rates of victimization.

What makes this program unique is its reliance on individual efforts to produce cultural change—to transform our community from one that promotes violence to one that is intolerant of it. Metaphorically, the goal is to have green dots outnumber red dots on a campus map.

Furthermore, Green Dot isn't about combating an issue. "It's not about victims and perpetrators. Green Dot is about activating bystanders," said Tingstad Resident Director Christine Alberto.

Taking into account the fact that shyness often inhibits young adults from intervening in violent situations, there are three green dot options: be direct, delegate and/or distract. Students can decide which of these options is the best approach for them to take in the situation at hand.

More information is available at <http://www.plu.edu/greendot/home.php>. Green Dot 201 workshops are scheduled for the next two weekends, which students can sign up for online.

## More than a new coat of paint: PLU undergoes numerous summer renovations

Alison Small  
COPY EDITOR  
smallaki@plu.edu

While many students spent their summer away from the Lutedome, PLU put its hard hat on and went to work.

Many renovations occurred over the summer, including new roofs on Eastvold and the Field House. "Roots

are always high on our list," said David Kohler, director of Facilities Management. Eastvold's brick exterior was also cleaned and the decaying mortar and bricks were replaced.

Resident halls received some updates as well. These include Wi-Fi in South and Nordstad, new flat-screen television in the Hong main library, new lobby furniture in Foss, a new front desk in Nordstad and water refill

stations in Tingstad and Pflueger.

"I think it's really cool that we finally have water refill stations in Tostad," said junior Sara Graham. "I got so thirsty over the summer when I was working in there."

In addition to these renovations, 140 resident hall rooms and several lounges were given a fresh coat of paint. New whiteboards were added to many study lounges and an expanded cable

package now offers more channels.

Fifteen apartments in South hall were revamped with new paint, carpet and appliances. Kohler says this project is expected to continue, with more apartments undergoing the updates next year.

SEE RENOVATIONS PG. 3

### INSIDE



NEWS, PAGE 2

PLU welcomes 944 new students from around the world



LUTELIFE, PAGES 8-9

PLUtonic traveled to Hollywood and performed on live television in front of millions of Americans on "America's Got Talent." Read all about their rehearsals, surprises and experience.

AGE, PAGE 11

Men's soccer struggles through preseason play



SPORTS, PAGE 14

# Moving forward



PHOTOS BY ERIC CHARLES

*... the new year is a blank canvas for memories*

# Campus safety hires new director

## Sgt. Greg Premo stresses open-door policy

**Kari Plog**  
A&E Editor  
plogkr@plu.edu

Pacific Lutheran University has a new Campus Safety director. Sgt. Greg Premo was hired over the summer and plans to continue with the success former director Tony Berger left behind.

"I got the impression that Campus Safety has grown a lot in the past few years," Premo said. "My initial thought is to maintain that progress and reputation gained over the past few years. I would love to see [Campus Safety] expand and have even more student involvement."

Premo worked full time as a local law enforcement officer with the Pierce County Sheriff's Department for the past 16 years.

Tom Huelsbeck, assistant dean of Campus Life who played a primary role in hiring the new director, said Premo comes in with extensive experience as an administrator.

"He is incredibly outgoing and friendly," Huelsbeck said. "He will fit in really well at PLU."

PLU is contracted with the Pierce County Sheriff's Department, and Huelsbeck said the hiring process is regimented within the department's employee regulations.

"This model of contracting with the Sheriff's Department for our director provides so many benefits to the university," Huelsbeck said. "It is a unique model. No other school has that."

Premo comes from University Place Law Enforcement, which is also contracted with the Pierce County Sheriff's Department. Franklin Pierce High School

atmosphere seemed exciting to me."

Premo said his career has been strictly law enforcement, so he is excited to face new challenges that come with the territory of serving as a campus safety director.

"Five to ten percent of the job is law enforcement," he said. "Ninety percent is a new realm for me."

Premo said he hopes students will utilize his law enforcement knowledge as a resource whenever they need

guidance. He said even if he isn't able to help a student, he has the knowledge to refer them to someone who can.

"I want to truly have an open-door policy," he said. "Don't hesitate to come see me about something if you have an issue."

*"He is incredibly outgoing and friendly. He will fit in really well at PLU."*

**Tom Huelsbeck, Asst. Dean of Campus Life**

graduate and husband to a PLU alumna, Premo said he's familiar with the university's history and was drawn to the position as a result.

"The history and culture of PLU is part of what attracted me here," Premo said. "Dealing with a college

# Lutefit unveils Go.See.Do. tour

**Mel Natwick**  
Cory Editor  
natwicmk@plu.edu

This fall the Student Involvement and Leadership community is launching Go.See.Do. tour, a series of events, lectures and outings representing the experiences Pacific Lutheran University has to offer to the student body. Lutefit's Go.See.Do. events are scheduled throughout the fall semester.

"Go.See.Do. was created to capture some of the best experiences that PLU has to offer. Go.See.Do. encompasses academic excellence, experience and engagement," said Eva Johnson, Director of Student Involvement and Leadership.

Assistant Director of Student Involvement and Leadership Amber Dehne explains that the goal of Go.See.Do. is to "increase student engagement outside of the classroom."

What makes Go.See.Do. different from past years is that it represents seven different areas: academics, spirituality, leadership, health, wellness, diversity and service.

The seven categories are represented by a number of student body programs at PLU. These programs have decided to collaborate and help run Go.See.Do.

Johnson and Dehne explain

that Go.See.Do. is primarily overseen by the Campus Activity Partnership, which is run by a variety of student body programs such as Clubhouse, RHA and ASPLU.

Go.See.Do. is building a connective community by partnering up with RHA's conCoy or Connected Community of the Year. President of RHA Emily Tollefson states that conCoy "keeps the hall councils more involved with each other instead of drifting away from each other."

Director of Residential Programs Jeff Olsen Krengel explains that conCoy is "designed to integrate the halls into a larger community by participating in Go.See.Do. Go.See.Do. and conCoy coexist together to get students to participate."

Some other programs participating in Go.See.Do. are Student Life, Division of Academic Affairs and the Sustainability Community.

"Go.See.Do. and conCoy is a partnership among basically anything that has an affinity with the university," Olsen Krengel says.

Johnson explains that these seven different themes represented by these collaborative programs will help the student body become more involved with the PLU experience and get involved with different activities.

### September

- 9.6 H.U.M.P. Kickoff in The Cave
- 9.18 Sports Day (home games for: men and women's soccer, volleyball and football)
- 9.19 Mount Rainer Hike
- 9.21 Common Reading Speaker: Todd Goodman
- 9.22 American Sueño
- 9.22 Study Away Fair
- 9.23 Faith and Reason Dialogue
- 9.24 Lute Loop for Bikes
- 9.29 Egyptology Lecture

### October

- 10.1 UnPLugged Kickoff
- 10.2 Into the Streets
- 10.4 Benson Lecture in Business and Economic History
- 10.8 Meant To Live
- 10.9 Homecoming Football Game v. Whitworth
- 10.18 Knutsen Lecture
- 10.18 There's a CAPP for That!
- 10.19 There's a CAPP for That!
- 10.20 Visiting Writer Series: Lauren Groff
- 10.20 Love Your Body Day
- 10.27 Reformation Party
- 10.27 Fall Career Fair
- 10.28 Fall Career Fair

### November

- 11.1 Got (Citizenship) Privilege?
- 11.1 The 1,2,3s of Registration
- 11.2 The 1,2,3s of Registration
- 11.3 Volleyball v. Puget Sound
- 11.7 Habitat Restoration
- 11.11 Holocaust Program Lecture
- 11.17 Visiting Writer Series: Matthew Dickman & Monica Youn
- 11.19 Global Get Down
- 11.19 Psychology Colloquium
- 11.30 Sex + Hook Up Culture: Blame it on the Alcohol

### December

- 12.1 Light Up Red Square
- 12.4 Basketball v. George Fox
- 12.10 Christmas Concert

# BRIEFS

## Zipcars offered in Library parking lot

Pacific Lutheran University now offers a new form of public transportation. As of this August, Zipcars are available for short- or extended-term use at standard rental rates.

After paying a \$85 annual fee, students, faculty and staff can rent a Zipcar for \$8 per hour or \$66 for the day on weekdays, and \$9 per hour or \$72 for the day on weekends. Gas and insurance are included in the rental costs.

To be eligible, a renter must be at least 18 years old and have no major traffic violations in the last three years.

For more information, visit [www.zipcar.com/plu](http://www.zipcar.com/plu)

## MyLuteLife offers students new organizational tool

PLU recently launched a new social networking site called MyLuteLife, which enables students to manage their busy co-curricular lives through the use of calendars, to-do lists, group events, etc.

MyLuteLife provides an easy, interactive method of communication between clubs and organizations on campus. A link to it can be found on PLU's homepage.

## Garfield undergoes transformation

Things look a little different at Garfield Book Company this fall. Lute merchandise is now located on the second floor, while downstairs features everything that can be found in a standard bookstore. Forza has new owners and is open once again.

Garfield Book Company is also introducing a loyalty program for students and staff that gives its members \$15 back for every \$100 of textbooks purchased. To save even more money on books, there is a new rental program with Follett.

## Dates to remember

Sept. 13: Last day to add a class without a \$100 fee and instructor's signature.

Sept. 14 & 21: ASPLU Senate Meeting at 6:15 p.m. in UC 171. All students welcome.

Sept. 17: Psychology Colloquium "Walking the Bicultural Tightrope" with Dr. Agnes Kwong at 2 p.m. in Xavier 201.

Sept. 19: Fall Preview Day.

Sept. 20: Last day to drop a class without a \$100 fee and instructor's signature.

Sept. 20: Volunteer fair.  
Sept. 23: Faith and Reason Dialogues at 7 p.m. in the Scan. Center.

## RENOVATIONS CONTINUED FROM PG. 1

"We're pretty busy in the summertime," Kohler said.

The University Center Mezzanine (third floor) was also remodeled and is now home to Counseling and Disability Services.

"That's made life nice for a lot of folks," Kohler said. He says the offices are now more centrally located while providing an increased amount of privacy.

Facilities Management employed 35 student employees over the summer.

"We had a lot of student help this year," Kohler said.

Some department shuffling occurred, with the psychology department consolidating to Ramstad.

The cost of these summer renovations totaled more than one million dollars. Plans for future renovations are not yet

concrete and are decided by the capitol improvement committee, which includes faculty, students and representatives from residential life, athletics, dining services and facilities management.

Although Kohler says that the current economic situation is not conducive to starting a lot of projects.

"It's always good to have some projects on the shelf," Kohler said.



AP PHOTO COURTESY OF MARTIN MEJIA  
**ABOVE:** Men work on a newly arrived drill that will be used in the rescue operation of 33 trapped miners in the collapsed San Jose mine in Copiapo, Chile, Sept. 5. **BELOW:** Monica Quispe, wife of Bolivian trapped miner Carlos Mamani, holds their baby next to a Bolivian flag outside the collapsed mine Sept. 5. The miners have been trapped deep underground in the copper and gold mine since its collapse Aug. 5.

# IN THE NEWS:

## Chile mine disaster exposes old family feuds, potential problems

Peter Prengaman  
 AP WRITER

SAN JOSE MINE, Chile (AP) — While a fire warms their campsite, the icy feuding between Cristina Nunez Macias and her mother-in-law is as palpable as the cold Atacama desert.

Both women are here to support the same man, 34-year-old Claudio Yanez, one of the 33 trapped miners 2,300 feet underground in Northern Chile. But they barely acknowledge each other. Wracks to wounds created many years ago, and have been fighting over who should get Yanez's salary and donations that have come from all over Chile.

"We have barely spoken in six years," said Macias. "And now she thinks the donations and help should go to her? No way."

The miners themselves passed the one-month mark underground on Sunday — longer than any other trapped miners have ever endured — and they still face more weeks

or months before rescue. The strain also has shaken the fault lines in their families above. Some squabble over who should get the miners' August wage, who should share in the donated food.

The local government has been forced to institute several measures: The miners were asked to send up a

gets their salary, a large sum in a country where the minimum wage is roughly \$400 a month, can put the men in a difficult situation, and limited communications give them little way to talk through the problems with squabbling relatives.

Despite attention from around the world, the miners' financial future is uncertain whether they make it out alive.

The owners of the mining company, San Esteban, have said they may not be able to pay wages in September, and are also considering bankruptcy.

While every family is focused on seeing its loved one emerge alive, there is another deep, longer-term worry: Will these men be able to return to work?

Many, psychologically and physically, may be unable to go back in the mines, or refuse to do so.

There are few other opportunities in Northern Chile, and many of the men don't have the education to do anything else that pays as well.

*"A big worry is: How they will come out? They don't have other jobs."*

Pamela Leiva

note designating who could get their \$1,600 salary for August. There are separate bank accounts for each miner, which no family member can touch.

Social workers were also brought in to sort out who gets boxes of food, household cleaners and clothes donated to the miners — helping settle disputes among relatives of about half the families of the trapped men, said Pamela Leiva, the head social worker.

Having to designate who

## Birth Control Rules Change!

Simplified rules make getting Free Birth Control easier than ever. Find out more at [ppgnw.org/takecharge](http://ppgnw.org/takecharge).



**PLANNED PARENTHOOD**  
 OF THE GREAT NORTHWEST  
 800.230.PLAN (7526)

Planned Parenthood® is a 501(c)(3) not-for-profit organization. We rely heavily on support from donors who help sustain responsible reproduction. Planned Parenthood® is a registered trademark of Planned Parenthood® Federation of America, Inc. © 2010 Planned Parenthood® of the Great Northwest.

## Women Needed

For NEW CHOICE STUDY

Sexually Active?

Wish you didn't have to remember to take your birth control every day? You have the opportunity to participate in the NEW CHOICE STUDY to assess the safety and efficacy of a low-dose, once-weekly, investigational contraceptive patch. The hormones in this contraceptive patch are FDA approved for use in birth control pills. Study participants will receive study medication, medical exams, and compensation for their time and travel expenses for a full year.

Visit [www.newchoicestudy.com](http://www.newchoicestudy.com) to learn more and to see if you qualify to participate.

new choice  
 STUDY

A study of a new choice in women's contraception

# IN THE NEWS:

## Safety concern for Fla. governor over 9/11 Quran burn

Mitch Stacy  
AP WRITER

GAINESVILLE, Fla. (AP) — Florida's governor is concerned about safety at home and around the world, a feeling shared by national and world leaders, over a plan by the head of a small church to burn copies of Islam's holiest text to mark the 9/11 terrorist attacks.

Gov. Charlie Crist said Wednesday he would closely monitor what happens Saturday at the Dove Outreach Center in Gainesville to try to ensure people are safe. U.S. embassies around the world will be doing the same after being ordered by the State Department to assess their security. Officials fear the burning could spark anti-American violence, including against soldiers, a concern shared by the U.S. commander in Afghanistan.

"In addition to being offensive, the Gainesville protest puts at risk those brave Americans who are fighting abroad for the freedoms and values that we believe in as Americans," said Crist, who is running as an independent for the U.S. Senate.

Bahrain's Foreign Ministry called the plan a "shameful act which is incompatible with the principles of tolerance and coexistence." The statement Thursday was among the first official denunciations in the Arab world against the plan.

Despite the mounting pressure to call off the bonfire, the Rev. Terry Jones said he has received much encouragement and was going through with his plan. Supporters have sent him copies of the Quran to burn, he said.

"As of right now, we are not convinced that backing down is the right thing," said Jones, 58, who took no questions at a news conference Wednesday.

Jones was flanked by an armed escort and said he has received more than 100 death threats since announcing in July that he would stage "International Burn-a-Quran Day." The book, according to Jones, is evil because it espouses something other than biblical truth and incites radical, violent behavior among Muslims.

Muslims consider the Quran the word of God and insist it be treated with the utmost respect. At least one cleric in Afghanistan said it is the duty of Muslims to react and that could mean killing Americans.

Gen. David Petraeus, the top U.S. and NATO commander in Afghanistan, e-mailed The Associated Press to say "images of the burning of a Quran would undoubtedly be used by extremists in Afghanistan — and around the world — to inflame public opinion and incite violence." It comes as an emotional debate continues over a proposed Islamic center near the ground zero site of the 2001 terrorist attacks in New York.

Petraeus spoke with Afghan President Karzai about the matter, said military spokesman Col. Erik Gunhus.

"They both agreed that burning of a Quran would undermine our effort in Afghanistan, jeopardize the safety of coalition troopers and civilians," Gunhus said, and would "create problems for our Afghan partners ... as it likely would be Afghan police and soldiers who would have to deal with any large demonstrations."



AP PHOTO COURTESY OF JOHN RAOLX  
Rev. Terry Jones at the Dove World Outreach Center in Gainesville, Fla., Monday, Aug. 30, 2010. Jones plans to burn copies of the Quran on church grounds to mark the Sept. 11, 2001 terrorist attacks on the United States that provoked the Afghan war.

Conservative radio and television host Glenn Beck wrote in a blog that burning the Quran is like burning the flag or the Bible — something people can do in the United States, but shouldn't.

"Our good Muslim friends and neighbors will be saddened," Beck wrote. "It makes the battle that they face inside their own communities even harder."

Jones' Dove Outreach Center is independent of any denomination.

It follows the Pentecostal tradition, which teaches that the Holy Spirit can manifest itself in the modern day. Pentecostals often view themselves as engaged in spiritual warfare against satanic forces.

The Vatican also denounced the protest and a religious watchdog group, Military Religious Freedom Foundation, said it would send a copy of the Quran to the Afghan National Army for every one that might be burned.

### \*\*\* ATTENTION STUDENTS \*\*\*

#### NON-DISCLOSURE OF "DIRECTORY INFORMATION"

The Family Educational Rights and Privacy Act of 1974, popularly known as the "Buckley Amendment" and carrying the acronym "FERPA," governs the University's collection, retention, and dissemination of information about students. (The document appears in the Student Handbook.)

One category of information covered by FERPA is called "directory information." Pacific Lutheran University has designated the following items as directory information: student name, local and permanent addresses and telephone numbers, E-mail address, date and place of birth, participation in officially recognized activities and sports, weight, and height of members of athletic teams, dates of attendance, class standing, previous educational agency or institution(s) attended, major and minor fields of study, anticipated date of graduation (if that has not yet occurred), and degree(s) and award(s) conferred (including dates).

The PLU FERPA policy appears on the Student Handbook website for your review at:

<http://www.plu.edu/student-handbook/code-of-conduct/home.php>

Under FERPA the University may disclose directory information without prior written consent unless an "eligible student" (18 years or over) or a parent (if the student is under 18 years of age) gives notice in writing to the contrary to the Office of the Vice President for Student Life restricting the disclosure of the directory information, as it pertains to the student, by the last day of registration for any given academic term at this University. **Please be assured that PLU uses discretion when releasing information.** (e.g. roommate notification or compliance with federal requirements) If you participate in activities such as music or drama performances, athletics or represent PLU in other public capacities, University policy is to issue minimal information in press releases.

If it is your wish that PLU NOT disclose "directory information" about you under any circumstance, you must come to the Student Life Office, Hauge Administration Building 105, on or before September 20th, 2010 to complete the appropriate form and meet with Lúrec Winter to understand fully the impact of the restriction. This restriction will remain in effect until the 10th day of the fall semester of the next academic year, unless you revoke it in writing.

## THE SALON PROFESSIONAL ACADEMY

Admissions: 253.617.7000  
3702 South Fife Street, Tacoma, WA 98409  
[www.tspaTacoma.com](http://www.tspaTacoma.com)

## CLASSES STARTING

September • November • January • March • May • July

**1/2 PRICE HAIRCUT**  
with purchase of full color service

**20% OFF**  
any Redken Color Extend Product

### MENU OF SERVICES

Haircut	\$10
Color	\$21
Corrective Facial	\$23
Highlights	\$31
Pedicure	\$19
Manicure	\$9

\*All services performed by experienced stylists.  
Also available: permanent waving, hair styling, etc.



ENDORSED BY REDKEN FOR EXCELLENCE IN EDUCATION **REDKEN**  
17th Avenue NYC

# From the editor



An eye on the horizon.

## Reno Sorensen

EDITOR-IN-CHIEF  
mast@plu.edu

## Student media strives to teach, learn, grow

There's something scary about being a part of the media. Scholars refer to the media as the unofficial fourth branch of the U.S. government. And with good reason.

Media (newspapers, television, magazines, radio etc.) are the vehicle for politics, art and public opinion. Media can sway an individual's political views, morals and beliefs. Every publication or broadcast can be a powerful weapon and effective medicine.

The average person may see up to 3,000 advertisements per day, according to CBS.com. Most of these we pick up on subliminally. This means that your subconscious is systematically filing other peoples' carefully crafted propaganda under "This could be important, remember for later." And your conscious mind doesn't have much say in the matter.

As a relatively small student publication, the Mooring Mast doesn't have the kind of sway that the New York Times does, or Fox News. Our paper doesn't reach the eyes of hundreds of thousands of people. But you're reading it.

So, here's the deal: this is your newspaper, your printed channel to the weekly goings-on at Pacific Lutheran University. This is your periodical, whether you're a member of the faculty, staff or the Parkland community. This is your journal if you are a student.

The Mooring Mast is a publication for students by students. It is a business, a publication, a forum for public discussion and, most importantly in my opinion, a learning lab. The reporters, columnists, photographers, cartoonists and editors of the Mast are constantly striving to learn our jobs and teach each other at the same time.

We want to craft the best possible articles, pages and photographs we can. We want to do your brains justice. Those fleshy computers that process thousands of messages a day. We want to answer your questions and challenge you to ask deeper questions, questions we haven't heard yet. This is our most important job, but it's not ours alone.

A beautiful conversation is not a one way street. You, reader, community member, student, need to tell us what's important to you. What do you want to read? What do you care about? What are we doing wrong? What are we doing right? Shoot us an e-mail (mast@plu.edu), stop by our office (University Center 172) or apply on the student employment website and write, draw or take photos for your newspaper.

So here's the deal: we report the news. We research the rich culture and tradition of music, theater and art at PLU. We cover the sports Lutes scream from the stands for. And we take a closer look at the human condition, on campus and around the world. And we want your help. Start asking questions.

Alexis Ballinger  
ASPLU PRESIDENT  
ballinaj@plu.edu

Greetings from ASPLU! We are very excited that the school year has started. This year we have committed to making this a rebuilding year and in doing so have revised our mission statement to read: "ASPLU strives to be a unified organization committed to positively advocating for the student body through

purposeful service, innovative programs and initiatives, and community-oriented collaboration."

This year we would like to merge the student body and ASPLU into one unified organization. We want students to feel like they are a part of ASPLU and that their opinions and concerns are being heard.

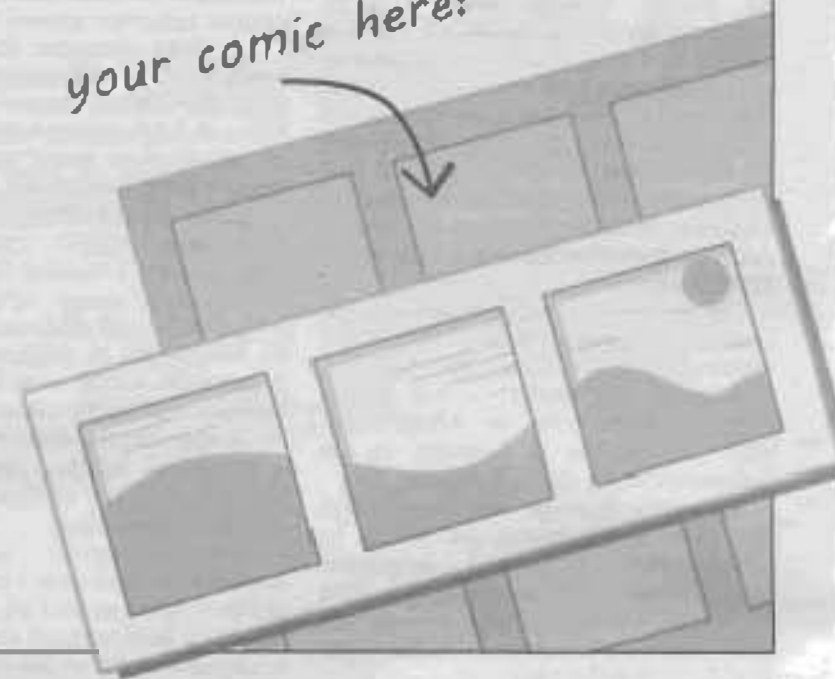
I would like to invite you to attend our Senate meetings on Tuesday nights at 6:15 p.m. in UC room 171 to share your

voice with us.

I would also like to open up other avenues of communication. I will have open office hours on Mondays from 5-6 p.m., Tuesdays from 4-5:45 p.m. and Thursdays from 11 a.m.-1 p.m. You are more than welcome to stop by any other time you see me sitting in the office which is located in the lower UC in room 140. Also, my e-mail is ballinaj@plu.edu. Don't be afraid to email questions or concerns.

Need an outlet for your artistic talent? Contact mast@plu. for more information about how you can cartoon for the Mast

your comic here!



# 'We've been there'

## Senior encourages first-years to have courage, make lifelong friends



Through a rose-colored window  
**Mitch Brown**  
brownmk@plu.edu

Fall is a time to enjoy seeing old friends and making new ones, for the smell of new textbooks and musty classrooms. It is a time of mixed feelings for most of us: excitement at the prospect of new knowledge, yet apprehension about a full schedule and the work that comes with it. It may be uneasy at the start but, after a few weeks we will once again settle back into the delicate balancing act that is college life. We prioritize, we procrastinate, we stay up late, and we wake up early. We get back to the grind and it feels right.

For you first-year students among us, finding this balance is a challenge. You've been thrust into the whitewater current that is college life and it is frightening.

"I was scared when I walked into my first class," first-year Megan Wusterbarth.

First-year Joanna Griffiths said she's, "Nervous but excited."

We've been there too. You graduated from high school and felt like you were ready to take on the whole world, and you are. You bring to PLU a new look and fresh, excited faces. Walking across campus on a sunny fall afternoon and seeing mobs of first-years hunched over their schedules and campus maps always brings a smile to our faces.

We know that, right now, figuring out why the classrooms in Admin go from 213 to 215 seems like the hardest task of the day, but there are bigger and more important challenges to be had. Once you've found your class you realize you're not in high school anymore.

I remember that feeling of floating untethered in a vast ocean as I moved into Hinderlie hall way back in 2007 and I

imagine that many of you first-years feel much the same. As a senior this year I face my own uncertainties, as do my fellow. We are faced with the prospect of leaving this place that has been our home and our safety blanket for the last four years. We form friendships that will last a lifetime, learn things that will propel us to new heights in the real world, and cement for ourselves a legacy at this esteemed university.

The class of 2011 may be on its way out, but the class of 2014 is just getting started. You can proudly walk on grounds made solid by thousands and thousands of students who came before you.

I speak for all of us who have gone before you in saying, good luck, have fun, and don't forget to leave your mark on this place. You don't have to be wild but it helps sometimes to be precious.

# Mast Staff 2010-2011

The Mast is published each Friday by students of Pacific Lutheran University, including faculty and staff. The views expressed by the editors, columnists and advertisers do not necessarily represent those of the PLU administration, faculty, students or the Mast staff.

The Mast adheres to the Society of Professional Journalists' code of ethics, which includes the guidelines to seek truth and report it, "minimize harm," and be accountable.

The Mast encourages letters to the editor. Letters must be submitted to The Mast by 5 p.m. the Wednesday of publication. Letters without a name, phone number and clear mailing address, postal, etc. for verification will be discarded. Letters should be no longer than 300 words in length and typed. The Mast reserves the right to refuse any letter. Letters may be edited for length, tone and errors.

The Mast can be reached at 253-757-4141 ext. 2333

Editor-in-chief  
Reno Sorensen  
soreninj@plu.edu

News editor  
Hendler Perry  
perryh@plu.edu

Sports editor  
Brendan Abshier  
abshierb@plu.edu

A&E editor  
Kari Plog  
plogk@plu.edu

International & Lifestyle editor  
Alexia Shaffer  
shafferam@plu.edu

Photo editor  
Ted Charles  
charlest@plu.edu

Business manager  
TJ Hecker  
mast@plu.edu

Copy editors  
Allison Small  
smalla@plu.edu

Haley Miller  
millerh@plu.edu

Madissa Natwick  
natwickm@plu.edu

Online Editor  
Jason Saunders  
saundersj@plu.edu

Op-Ed columnists  
Mitch Brown  
Gabe Fahuy  
Darius Virdy  
Sarah Wise

A&E columnists  
Ben Hilly  
Alexander  
Duminy  
Robert Ladd

Cartoonists  
Rebecca Scarborough

Reporters  
Loren Rutzinger  
Jack Sorenson  
Haley Kile  
Brandon Stephens  
Interns  
Christina Hare  
Talia Halawell  
Stephen O'Neil  
Erin Whittaker  
Adviser  
Doug Drowley

# Grad Gift gives back



PHOTO BY SARAH WISE

## Lutes should give back for those who come after

PLU has many time-honored traditions. Many are well-known and well-cherished. But I'm sure there are plenty of traditions at PLU you may never have heard of, such as the Grad Gift Committee. Established by the class of 1968, Grad Gift has been a way for the graduating senior class to raise money and create a scholarship for future Lutes for more than 30 years. It continues to offer a positive and lasting way for all Lutes to give back to the university which offers us all the opportunities of a lifetime.

The lack of awareness regarding Grad Gift on the PLU campus is a real problem. It is not uncommon for students to go through most of their college career oblivious to the existence of Grad Gift until they reach their senior year and are suddenly asked to shell out precious dollars.

PLU is such an integral and important part of our lives. 95% of all students receive financial aid provided by generous alumni and other donors. In our 4-5 years of college, this

university provides us with numerous opportunities we may never have had otherwise. This is a well-loved university by staff, students and alumni for good reason.

So should we, as students, give back in a positive way?

Sure, there are numerous ways to leave your mark and make an impact at the university. But something about contributing to the gum tree or leaving some nice graffiti or your name in your favorite classroom just doesn't seem epic enough.

Grad Gift is the perfect way to say thank you to this wonderful institution and help pave the way for future students, all while making your mark in a positive and lasting way. You don't have to be a donating genius to participate in Grad Gift and to make your mark. Anyone in the PLU community can—and should—contribute.

Don't let the Grad Gift tradition go unnoticed—as PLU prepares to embark on its 125th year, help the Grad Gift Committee begin a remarkable

31st year, and together we can make the future bright for other Lutes.

If you're interested in making your mark by donating to Grad Gift or by volunteering for the committee and for Grad Gift events, there are numerous ways to become involved. Visit the Grad Gift website at <http://plu.edu/gradgift>, or join the Grad Gift 2011 and Grad Gift Volunteers groups on Facebook. Together, we can make all the difference in the world for a future Lute.

[wisese@plu.edu](mailto:wisese@plu.edu)

# %95

of all PLU students receive financial aid from alumni

## So wise, Sarah Wise

## Lutes seek spirituality

Wrestling with the angel



Thomas Voelp

[Voelpte@plu.edu](mailto:Voelpte@plu.edu)

Hey Lutes, my name is Thomas Voelp. I am new to the Mooring Mast, but I am not new to Pacific Lutheran University. I am a junior religion major and music minor.

After studying at PLU, I would like to attend seminary in the Evangelical Lutheran Church of America (ELCA), be ordained, and join the Lutheran laity. Before I do that, however, I will be joining the Mast team this year. Not just for the wonderment that comes with seeing my name in print, but also for the chance to extend my own observations and give you a perspective that may enrich your own experience here at PLU.

I am very aware of my passions and I certainly do my best to indulge them. Reading this column, I expect you will learn some of my passions, especially concerning the nature and quality of spirituality. I find that in life, the pursuits of knowledge and academia provide excellent mediums for personal discovery and revelations.

The famous Swiss psychologist, Jean Piaget, formulated that thought patterns developed in stages. Abstract thought is something that occurs in the adult life. Welcome to adulthood, Lutes. The concept of self goes far beyond an image reflected in a mirror. The world is that much bigger. You may remember your elementary school teacher saying "You can be anything." Take it a few steps further. Your mind is an awesome tool, an endowment that entrusts you to act, or conversely, restrain.

Take my advice: don't restrain your thought. Open your mind to wonderment, to challenge yourself to go beyond your previous limitations. Consider new perspectives. The divine is an abstract dilemma. For millennia, humanity has contemplated the divine and we have wrestled with this concept. We have often struggled to place ourselves within a context that is invested both in spirituality and the tangible world. We do not always fit into the molds we witness daily.

Sometimes the mold doesn't fit us. We all are human, though. Our humanness, despite our diversity, is what we all can acknowledge and share. And sometimes, our diversity can seem to isolate us, and we may feel alone. But regardless of our feelings, we are not alone. Our passions, our roads, do converge with other paths.

And so this is the crossing, the intersection of many paths. They all connect, so what's to lose by taking a new road? Guaranteed, after a few turns, your road will emerge again.

Pax vobiscum.

"Pax vobiscum" is a Latin phrase meaning "Peace be with you."

# Sidewalk Talk

Which class are you looking forward to most this semester?



"Probably Behavioral Organization. It seems pretty interesting."  
Preston Taylor  
Junior



"We're taking history of the Holocaust."  
Dakota Selene-Hale  
Katie Ford  
Seniors



"Definitely not P.E. 100."  
Marvin Gold  
Sophomore



"Comparative Mythology."  
Alex Holden  
Sophomore

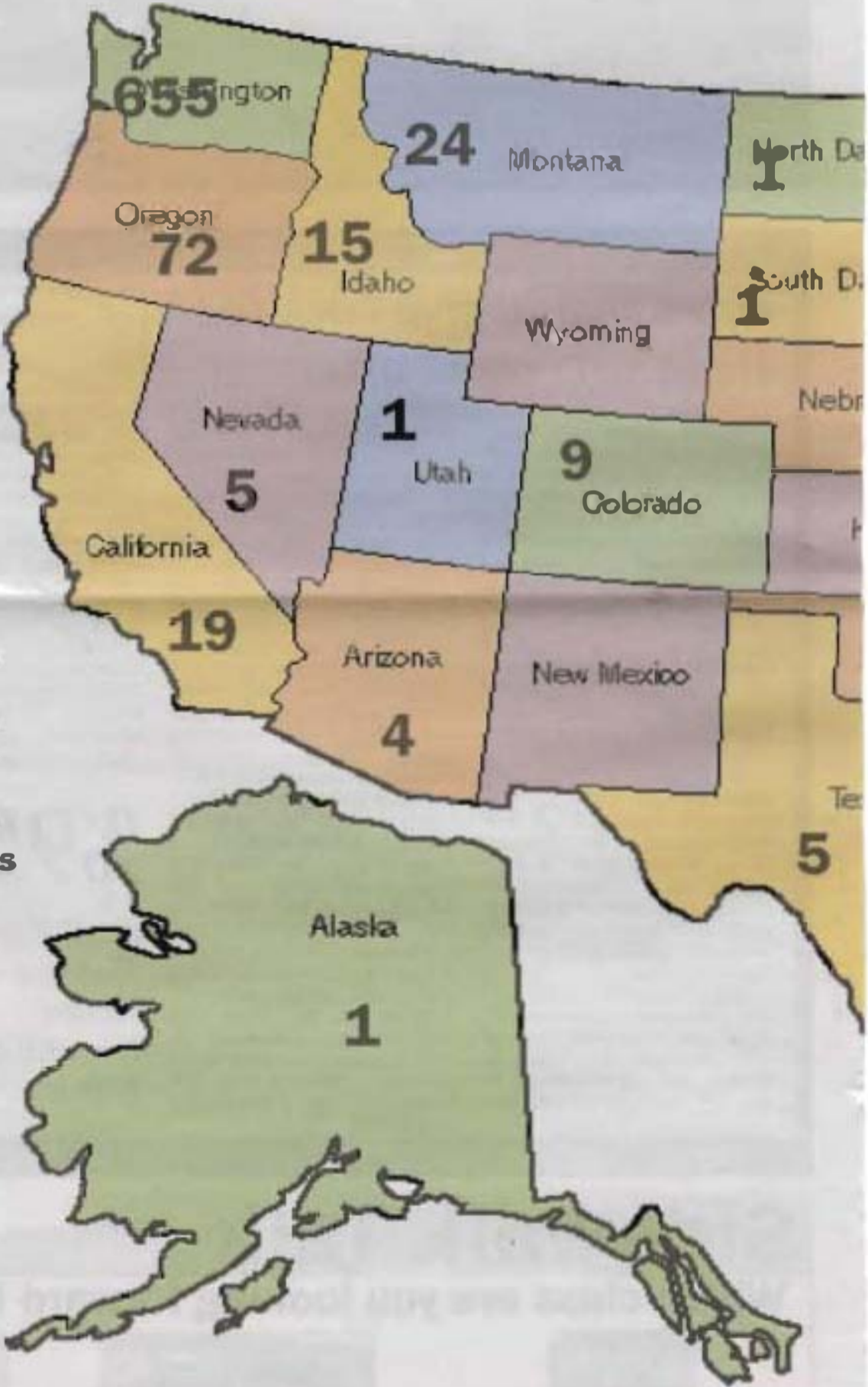


# Travel around the world with PLU

*PLU is welcoming new students from all over the world this fall.*

Total new students:  
**944**

This map shows the number of incoming students, both transfer and first years, from each state as of Sept. 7, 2010. The number of students at any university is always subject to change, and PLU does not release official numbers until 10 days after classes.



Females: 58%

Males: 37%

\*the rest are graduate students or unaccounted for







For more information regarding student statistics and data, contact the Office of Institutional Research in the Office of the Provost at 253-535-7444 or [www.plu.edu/~olra](http://www.plu.edu/~olra).



**International Students**

- from:**  
 China  
 Dominican Republic  
 Denmark  
 France  
 India  
 Jordan  
 Japan  
 Korea  
 Mali  
 Norway  
 Saudi Arabia  
 Sweden  
 Taiwan  
 Vietnam

\*with 6 unknown



# UNIVERSITY OF MORE

JUST WHEN YOU THOUGHT COLLEGE LIFE COULDN'T GET ANY BETTER

# xfinity



Keeping Up with the Kardashians Now Available On Demand

Access all the entertainment you love, how and when you want.

Special student offer

DIGITAL STARTER TV AND PERFORMANCE HIGH-SPEED INTERNET

**\$59<sup>99</sup>** per month for 6 months

INCLUDES ESPN AND ESPN2

Get the XFINITY™ Double Play

Access THOUSANDS of On Demand Choices

Internet that's up to **8x** faster than DSL

All backed by the Comcast 30-Day Money-Back Guarantee.

### With the XFINITY Double Play you'll get:

#### XFINITY TV

Instantly access the latest TV shows and hit movies On Demand - most at no extra charge. Watch your favorite shows anytime, on TV and now online at [xfinity.com/tv](http://xfinity.com/tv)

#### XFINITY INTERNET

Experience lightning-fast speeds. Get award winning Norton™ Security Suite (\$160 value included). Watch 3,500 live games with [xfinity.com/ESPN3](http://xfinity.com/ESPN3).

High-Speed 2go.™ Ask how you can Take Fast with You™!

Call 1.888.836.6635 now or visit [XFINITY4COLLEGE.COM](http://XFINITY4COLLEGE.COM)  
Also stop by our Comcast Retail locations at:

TACOMA HALL

SOUTH HILL MALL

Comcast Service Center  
5401 6th Ave., Suite 505, Tacoma, 98406  
M-F Sat 9am-6pm



Offer ends 10/31/2010, and is limited to new eligible customers. XFINITY™ service not available in all areas. Offer limited to Digital Starter TV and Performance Internet service. After 6 months of service is cancelled or downgraded, regular charges apply. Comcast student monthly service charge for Digital Starter TV is \$25.99 - \$30.99 and for Performance Internet service is \$9.99 - \$17.99, depending on other services subscribed to. TV and Internet service limited to a single outlet. Equipment, installation, taxes and franchise fees apply. May not be combined with other offers. TV Basic service subscription required to receive other levels of service. On Demand selections subject to change indicated at time of purchase. Not all programming available in all areas. Xfinity Internet Service Speed comparison between Comcast Performance Internet and standard 1.5 TDL download only. Actual speeds may vary and not guaranteed. Not all features compatible with Macintosh systems. Money-Back Guarantee applies to new month recurring charges. Comcast and Xfinity are trademarks of Comcast Corporation. © 2010 Comcast. All rights reserved. Xfinity is a trademark of Comcast Corporation.

# PLUtonic's got Talent

**Kari Plog**

MAST A&E EDITOR  
plogkr@plu.edu

President Loren Anderson welcomed Pacific Lutheran University students to the new academic year during his speech at opening convocation. In his speech he talked about reaching for your dreams and used PLU's a cappella group PLUtonic as a prime example of achieving your dreams, no matter how big.

In July PLUtonic made it onto the entertainment reality show "America's Got Talent" as one of the 12 finalists in the show's national YouTube contest.

"Before we knew it we were down in LA jumping right into rehearsals," said sophomore John Marzano, PLUtonic's president. "We were really excited and nervous about it."

This contest was PLUtonic's second chance at stardom. Last spring, the group auditioned and made it onto the live auditions in front of the judges in Portland. They had to drop out of the competition, however, because the timeline for the show conflicted with finals for the group members.

"It was a difficult decision to make but we all knew school came first," Marzano said.

Marzano said the experience was still surreal the second time around.

"It was something still fresh in our minds that we wanted to do," he said.

Immediately after hearing they were one of the 12 finalists, PLUtonic members had to make arrangements to travel to Hollywood. Marzano said it happened quickly.

"It was really nerve-racking to think that in two weeks we

would be in Hollywood with cameras on our faces with America judging us," he said.

Senior Phillip Serino, another PLUtonic member, said it wasn't the stage that was nerve-racking but the thought of the audience viewing the performance live.

"Knowing that we were being viewed by 12 million people was very weird," he said. "It's a really small place. I think I was more excited than nervous."

Not all members were able to travel to Los Angeles, but 10 members were able to fly down to the set and stay for two weeks. Marzano said that was a tough discussion to have.

"We had to take into consideration that the sound wouldn't be the same," he said. "But it was an opportunity of a lifetime. We wanted to get our name out there."

The group had all expenses paid and were busy with publicity interviews, AGT video shoots and rehearsals for two weeks.

For the live show, the group performed a rendition of the song "Low" by Flo Rida and received positive remarks from the judges. Following the live performance and nationwide voting, PLUtonic was in the last elimination round during the live results and was the second-to-last act eliminated, bringing their journey to an end.

Marzano said that even though PLUtonic didn't move on in the competition, the group was happy with the performance.

"I wasn't bitter but I was definitely surprised (that we didn't move on)," Marzano said. "The contestants were all super talented. It was disappointing but we were



Former PLUtonic president and alumnae Jesse Hull performs with juniors Anthony Kelly-Glassie and Tyler Morse.

happy for the people who made it through."

Serino and Marzano both said the final two contestants who moved on following PLUtonic's elimination on the live results show were the contestants that were closest with the group during their time there.

"Christina and Cam were our really good friends," Marzano said. "We hung out with them a lot on and off set."

Serino said the group spent a lot of time playing "silly games" to pass time backstage.

"The whole trip we were playing so many types of games," Serino said. "It drew so many contestants in and we grew relationships with them."

Both Serino and Marzano said the experience was a great bonding opportunity.

"For me, it wasn't about AGT so much," Serino said. "I had more joy building relationships with the group

and with people backstage."

Marzano said he was friends with all the PLUtonic guys before, but those friendships grew deeper through this experience.

"We bonded a lot down there," he said. "We are closer than we've ever been because of this experience."

The members of PLUtonic may have finished their national journey, but their campus journey is just beginning at the start of this academic year. Tomorrow at 7:30 p.m. in Mary Baker Russel room 334 they will host auditions in search of new talent.

Marzano said that from the interest shown at the involvement fair he is excited to see who shows up.

"I'm expecting a big turnout," he said.

PLUtonic has big plans for the upcoming year. Marzano said they are planning the usual fall and spring concerts,

but are adding a couple of new events. Members will perform a holiday show and also a spring "study break" show during dead week on Foss Field.

"Students can bring their beach towel and come and study while we perform," Marzano said.

PLUtonic is also continuing work on an album that is currently in the editing process. The members of the group have been working with one of the top a cappella producers on the West Coast, and Marzano said he hopes the album will be available for sale at their first concert.

Reflecting on the experience, Marzano said PLUtonic now has something to look back on and be proud of.

"Everything happens for a reason, and I feel like this is only the beginning for PLUtonic," he said.



# LuteDome LowDown

## FALL THEATER SCHEDULE

### THE MUSICAL COMEDY MURDERS OF 1940

By John Bishop

Directed by Professor Jeff A. Clapp

Oct. 14, 15, 16, 22, 23 at 7:30 p.m., Oct. 24 at 2 p.m.



### NIGHT OF MUSICAL THEATRE

Directed by Julia Stockton as part of her Capstone in Theatre

Oct. 28, 29, 30 at 7:30 p.m.

### THE SEAGULL

By Anton Chekhov, translated by Tom Stoppard

An APO Production, Directed by Noum Blanks as part of his Senior Capstone in Theatre

Dec. 8, 9, 10, 11 at 7:30 p.m., Dec. 12 at 2 p.m.



## FALL MUSIC SCHEDULE

### PAUL TEGELS ORGAN RECITAL

3 p.m. Sept. 12 as part of the Richard D. Moe Organ Recital Series, Lagerquist Concert Hall

### LYRIC BRASS QUINTET

3 p.m. Oct. 3, Lagerquist Concert Hall

### UNIVERSITY SYMPHONY ORCHESTRA

8 p.m. Oct. 12, Lagerquist Concert Hall

### UNIVERSITY JAZZ ENSEMBLE

8 p.m. Oct. 13, CK Hall, University Center

WIND ENSEMBLE, assisted by both the Choir of the West and University Chorale featuring music by famous composer Ola Gjeilo.

3 p.m. Oct. 17, Lagerquist Concert Hall

### UNIVERSITY SYMPHONY ORCHESTRA

8 p.m. Nov. 16, Lagerquist Concert Hall

### UNIVERSITY JAZZ ENSEMBLE

8 p.m. Nov. 19, CK Hall, University Center

### WIND ENSEMBLE

8 p.m. Nov. 23, Lagerquist Concert Hall

### CONCERT BAND

8 p.m. Dec. 1, Lagerquist Concert Hall

### STUDENT WIND AND BRASS RECITAL

8 p.m. Dec. 7, Lagerquist Concert Hall

UNIVERSITY JAZZ ENSEMBLE "Christmas Jam" live radio broadcast on KPLU

Noon Dec. 9, Lagerquist Concert Hall

## movie review:

### "Scott Pilgrim Vs. The World"

Rhain Ieddy

Mast A&E WRXWYK  
ieddyrn@plu.edu

"Scott Pilgrim Vs. The World" is, without a shadow of a doubt, one of the best movies I've seen in a very long while.

Directed by Edgar Wright, the movie is based off of an Eisner Award-winning graphic novel series of the same name, written by Brian Lee O'Malley. It tells the story of Scott Pilgrim (Michael Cera), the bassist in a Toronto garage band called Sex Bob-omb (an homage to Nintendo's Super Mario franchise). He meets and falls in love with Ramona Flowers (Mary Elizabeth Winstead), an American delivery girl. After they realize their mutual attraction, Scott is forced to battle the League of Evil Exes for Ramona's affection. All seven "evil exes" have various fighting styles which Scott faces in increasingly comic ways.

The first thing that impressed me about the movie was stylization. Sound effects literally appear on screen as they happen, but are not overdone; so well-placed that they add emphasis rather than annoy the viewer. The over-the-top nature of the fight scenes emulates the graphic novels almost exactly, with the addition of an arcade-style announcer for each fight, played by Bill Hader. And by "over-the-top" I don't mean cheesy martial arts; in this movie's case, it means giant constructs of light in the shape of dragons and a massive brawl between Scott and a group of skateboard-wielding stunt doubles.

Ignoring Cera's continued typecasting into the awkward hero

archetype, his performance was phenomenal. Winstead also gave a fantastic performance.

I'm not the only one who thinks "Scott Pilgrim" is a work of genius.

"Personally, I think this is the best comic book adaptation to date. Better than 'Kick-Ass' and 'Watchmen.' It really showcases both the subtle and not so subtle aspects of comic and gamer culture in one big masterpiece and the quality of the acting enhances this very well," said sophomore Thomas Robinson, a student in Pacific Lutheran University's performing arts program.

Despite its disappointing performance at the box office, "Scott Pilgrim" was met with critical acclaim. Critical acclaim, it seems, only from those who appreciate the kind of literature on which this movie is based. Several critics have panned the movie solely on the basis of its target audience.

For example, a reviewer for the St. Petersburg Times goes on to slam video game culture, saying "I have discovered more appealing ways to not have a life."

Graphic literature and sequential art are completely legitimate storytelling media, and to bash on them is an insult to the professions of many influential people throughout history, criticizes those who aspire to make it in the comic industries.

I would like to finish with a quote from the novel "American Gods" by Neil Gaiman, which I feel describes "Scott Pilgrim" perfectly: "There are some as are what they are. And there are some as aren't what they seem to be. And there are some as only seem to be what they seem to be."



Tickets are only \$6.50  
with your valid student ID!

606 S Fawcett Ave 253.593.4474

www.grandcinema.com

## CAIRO TIME (PG)

Fri: 1:50, 4:00, 6:15, 8:15

Sat/Sun: 11:50am, \*1:50, 4:00, 6:15, 8:15

Mon-Thurs: 1:50, 4:00, 6:15, 8:15

\*A discussion will follow Saturday's 1:50pm showing

## WILD GRASS (PG)

Fri-Thurs: \*2:15, 6:55

\*A discussion will follow Sunday's 2:15pm showing

## GET LOW (PG-13)

Fri: 2:00, 4:20, 6:40, 9:00

Sat/Sun: 11:40am, 2:00, 4:20, 6:40, 9:00

Mon-Thurs: 2:00, 4:20, 6:40, 9:00

## THE KIDS ARE ALL RIGHT (R)

Fri: 2:30, 7:45

Sat/Sun: 12:15, 2:30, 7:45

Mon-Thurs: 2:30, 7:45

## WINTER'S BONE (R)

Fri: 4:30, 9:10

Sat/Sun: 12:00, 4:30, 9:10

Mon-Thurs: 4:30, 9:10

## THE GIRL WHO PLAYED WITH FIRE (R)

Fri-Thurs: 5:00

# Lutes SPORTS SCHEDULE

## Men and Women's Soccer

Sept. 11 – Women at Western Washington, noon.  
 Sept. 11 – \*Men vs. Whitman, noon  
 Sept. 12 -- \*Men vs. Whitworth, noon

## Volleyball

Sept. 10 & 11 – PLU at Cal-Lu-fornia Invitational, Cal Lutheran, Thousand Oaks, Calif.

## Football

Sept. 11 – PLU at Hamline, 10 a.m.  
 Sept. 18 – \*PLU vs. Cal Lutheran, 12:30 p.m.

## Cross Country

Sept. 17 – Willamette Grass Course/Regional Preview @ Salem, Ore., noon  
 Sept. 18 – Sundodger Invitational @ Seattle, Wash., 9 a.m.



AN ASTERISK REPRESENTS A PLU HOME GAME

## Star QBs dot Pac-10 landscape

John Marshall  
 AP COLLEGE FOOTBALL WRITER

PHOENIX (AP) — The Pac-10 has always been known for its high-caliber quarterbacks, churning out big names like Elway, Aikman, Bledsoe, Palmer, Harrington. Before them, guys like Plunkett, Fouts, Bartkowski and Moon were whipping passes around the West Coast.

Heck, even Ryan Leaf was a star at Washington State before becoming an NFL bust turned golf coach.

The past few years? Other than the occasional star — usually at USC — it's been kind of blah under center in the conference.

Well, this season the Pac is back, baby. Led by four potential first-round NFL draft picks and as deep top to bottom as it's ever been, the Pac-10 has reclaimed its title as the quarterback conference.

Locker, Luck, Foles, Barkley, Riley — this new list of names in the Pac-10 has a chance to be the best yet.

"They're franchise players and not many conferences can put out four or five of them in a year or two, that's for sure," Arizona coach Mike Stoops said. "We've done it in the past and it looks like we're going to have a crew that can do it again in the next two years."

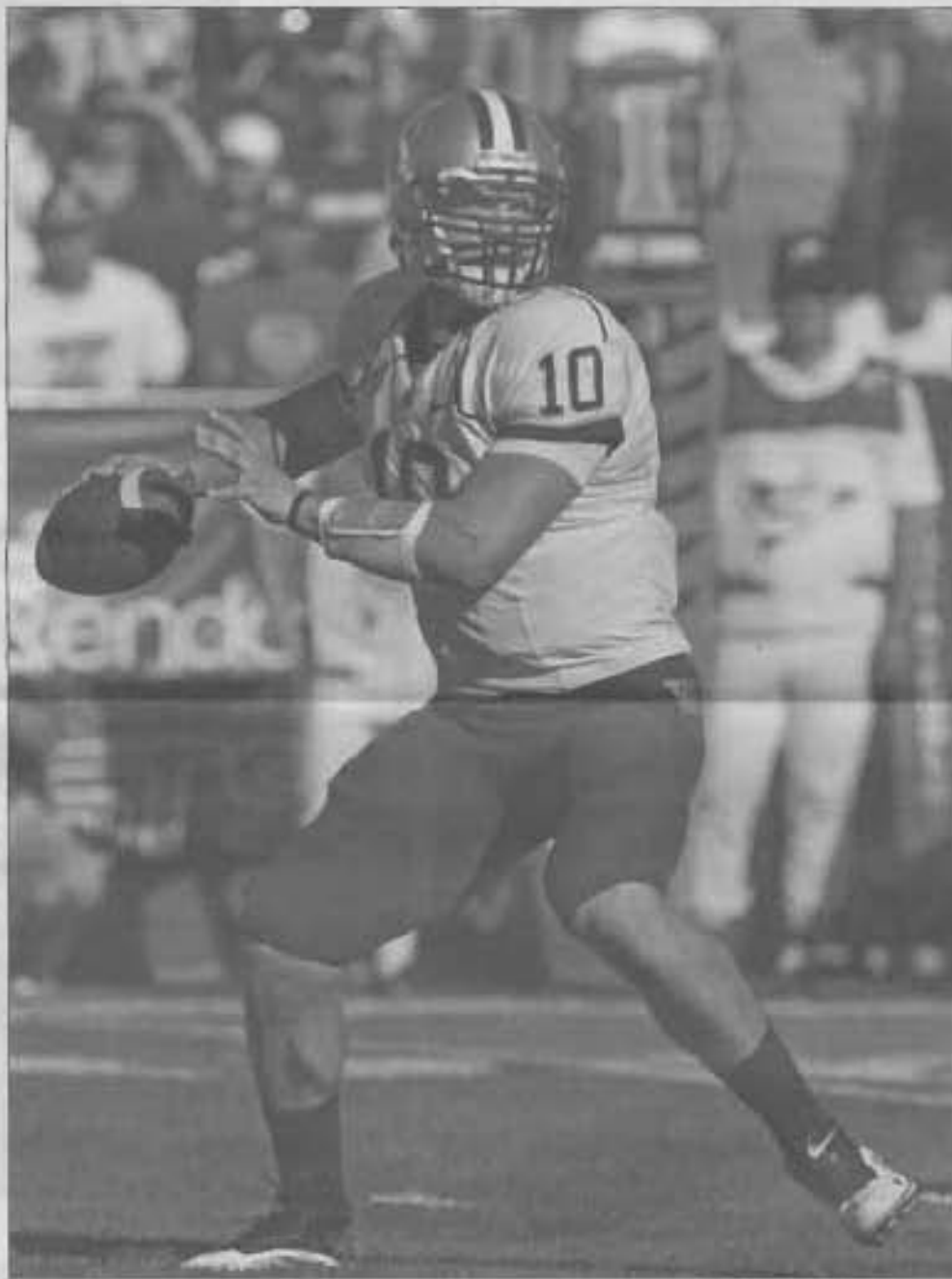
Over the past few seasons, the Big 12 was the place to go for quarterbacks, players like Vince Young, Colt McCoy, Sam Bradford, Brad Smith and Graham Harrell winging balls around the conference's spread offenses.

The Pac-10 had a handful of star signal callers during the Big 12's heyday, including Mark Sanchez and Matt Leinart at USC, Cal's Aaron Rodgers, Oregon State's Matt Moore, Dennis Dixon at Oregon.

Still, it wasn't quite what we've come to expect from a conference that's had eight quarterbacks taken with the No. 1 overall pick in the draft and five Heisman Trophy winners.

This season, the Pac-10 lost a star in Jeremiah Masoli and still has the best collection of quarterbacks in the country.

Leading the way is Washington senior Jake Locker, a top contender for the Heisman Trophy and projected No.



AP PHOTO COURTESY OF GEORGE FREY

ABOVE: Washington's quarterback Jake Locker throws a pass against BYU during an NCAA college football game at LeVell Edwards Stadium in Provo, Utah on Saturday. BELOW: Stanford quarterback Andrew Luck passes against Sacramento State in the first quarter of an NCAA college football game in Stanford, Calif. on Saturday.

1 overall pick in next year's draft.

Big, athletic and with a throw-it-through-a-wall arm, Locker fits the prototype of an NFL quarterback. He had thrown for over 5,300 career yards heading into this season and holds the school record with 1,554 yards rushing.

But, as a testament to the talent in the Pac-10, Locker wasn't even the best quarterback the first weekend of the season. Wasn't even close, really.

Though he threw for 266 yards and a touchdown, Locker connected on just 20 of 37 passes and had some key mistakes on a late drive, running the wrong way on a third-down play and having a pass swatted

at the line on fourth down with the Huskies going for the go-ahead score.

Washington ended up losing 23-17, its 13th straight loss on the road.

"It was kind of indicative of our overall offense: there were some big plays, but the consistency wasn't where we needed it," Washington coach Steve Sarkisian said.

The consistency came from other places around the conference.

Andrew Luck threw a career-high four touchdown passes in the 25th-ranked Cardinal's 52-17 win over Sacramento State, a solid start in Stanford's first game without Heisman Trophy runner-up Toby Gerhart.

Matt Barkley, in the first step toward showing he's ready to develop into the next great USC quarterback, tied a school record with five touchdown passes in a lopsided win over Hawaii.

That was just the first week. Keep this up and the Pac-10 could have its best under-center season ever and regain its elite quarterback-producing status.

## Around the NWC

Brendan Abshier  
 MAST SPORTS EDITOR  
 abshieb@plu.edu

### Loggers chop Carleton

The No. 19-ranked Puget Sound women's soccer team topped Carleton 2-1 in the Loggers' home opener Sept. 4.

This was first time the two teams had met since Carleton defeated UPS in the 2008 NCAA Tournament.

The Loggers scored their two goals in the first 23 minutes of the game.

### Surviving the top 25

Willamette University ranked back in a contest between two nationally-ranked NCAA Division II teams.

The Bears came from behind to top the University of Wisconsin-Stevens Point 33-14.

Willamette, ranked No. 18 in the D3football.com Top 25 Preseason Poll while UW-Stevens Point ranked No. 16.

The Pointers were able to jump to a 14-0 lead in their first two possessions.

The Bears came back into the break with a 27-14 lead.

### Off on the right foot

Puget Sound Head Coach Jeff Thomas got his first win in his first game as coach of the football team. The Loggers collected a 36-19 season-opening win against Pacific Saturday.

UPS got on the board from the get-go, punting Pacific to a 20-0 lead in the first quarter.

The win ended the Loggers' nine-game losing streak.

Pacific also found attention in the first week of action. Senior lon Lee was the first Boxer to earn Northwest Conference Student-Athlete of the Week in 26 years.

The last players to earn the honor were Mike Connor and Wayne Carter in 1984 who were selected for the league's offensive and defensive awards no more than one occasion.



AP PHOTO COURTESY OF PAUL SAKUMA

# Men's soccer looks for first win

**Brendan Abshier**  
 Staff Sports Editor  
 abshier@plu.edu

The 2010 season hasn't started the way a team who finished just shy of a postseason berth in 2009 like Pacific Lutheran may have imagined.

In their first three games, the Lutes have gone 0-2-1. But, it is still early.

This season has consisted of close calls, tough breaks, a double overtime and a red card forcing the Lutes to play with only ten men for the majority of a game against Augsburg where PLU lost 3-0.

These are themes neither the team nor the coaches would hope to continue.

PLU's 2009 season led way to a 14-5 overall record with the Lutes going 11-3 in Northwest Conference play.

Their only home loss came from UC Santa Cruz, which was also the Lutes' season opener. PLU tied UCSC 2-2 in double overtime this year.

Furthermore, the Lutes have outplayed their opponents in almost every statistic except for goals scored. PLU has recorded 40 total shots to opponents' 36 and the Lutes have been awarded 24 corner kicks compared to 16 for all opponents.

Although the Lutes have yet to record a win, the players who produced positive stats last year are already at it again this year.

Senior midfielder Daniele Zaccagnini gave a preview of his talent in PLU's home opener against Northwest Christian Sept. 2.

He controlled the ball and made an aggressive move to his left to set up a shot that found the upper right corner of the net.

Junior Chad Kearns also showed what the team is capable of after helping form a late comeback against UCSC.

PLU scored early when Kearns received the ball from junior Spencer Augustin and touched it just past the goalie for Kearns' first goal of the season.

Later in the game, with just more than a minute left, Kearns touched the ball to junior Surafel Wodajo, who slipped it past the keeper to knot the game 2-2.

The Lutes sent three shots on goal at the UCSC keeper early in overtime, but were unable to find the back of the net.

Neither team managed to score in two overtimes, ending the game in a tie.

This weekend will be the last chance the Lutes have to prove themselves before starting NWC action Sept. 18 at home against Willamette.

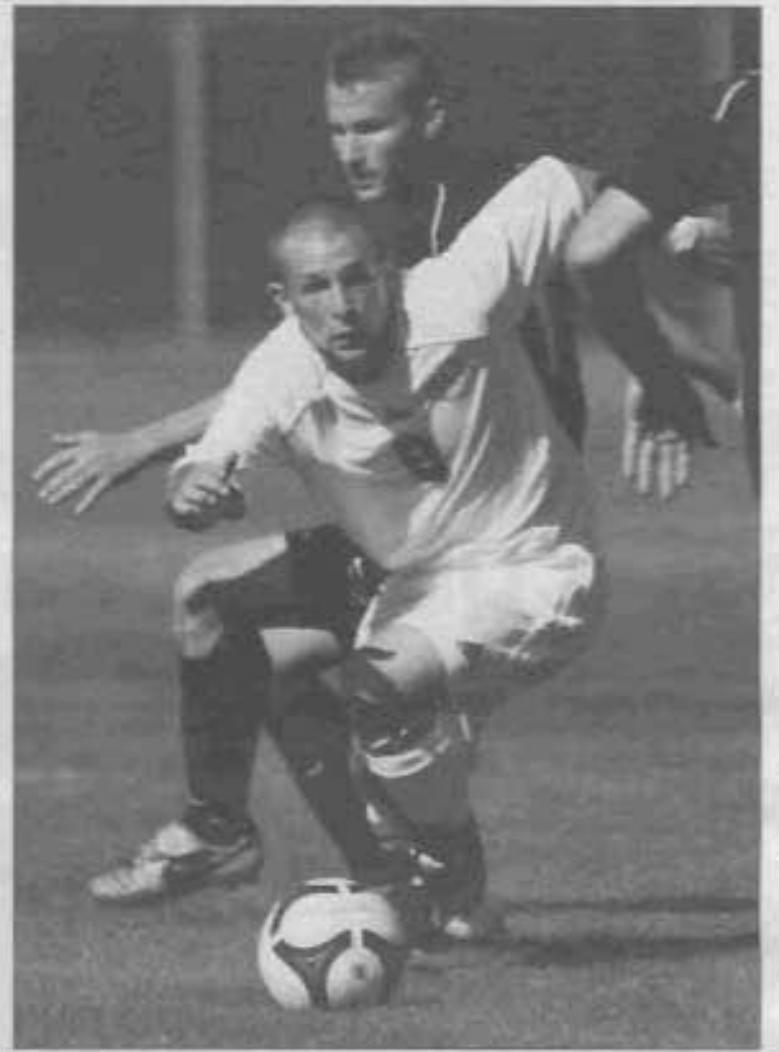


PHOTO BY TED CHARLES

ABOVE: Junior Aaron Grossberg looks to attack a loose ball earlier this season. The Lutes are 0-2-1 so far despite outshooting their opponents 40-36 and getting 24 corner kicks compared to opponents' 16.

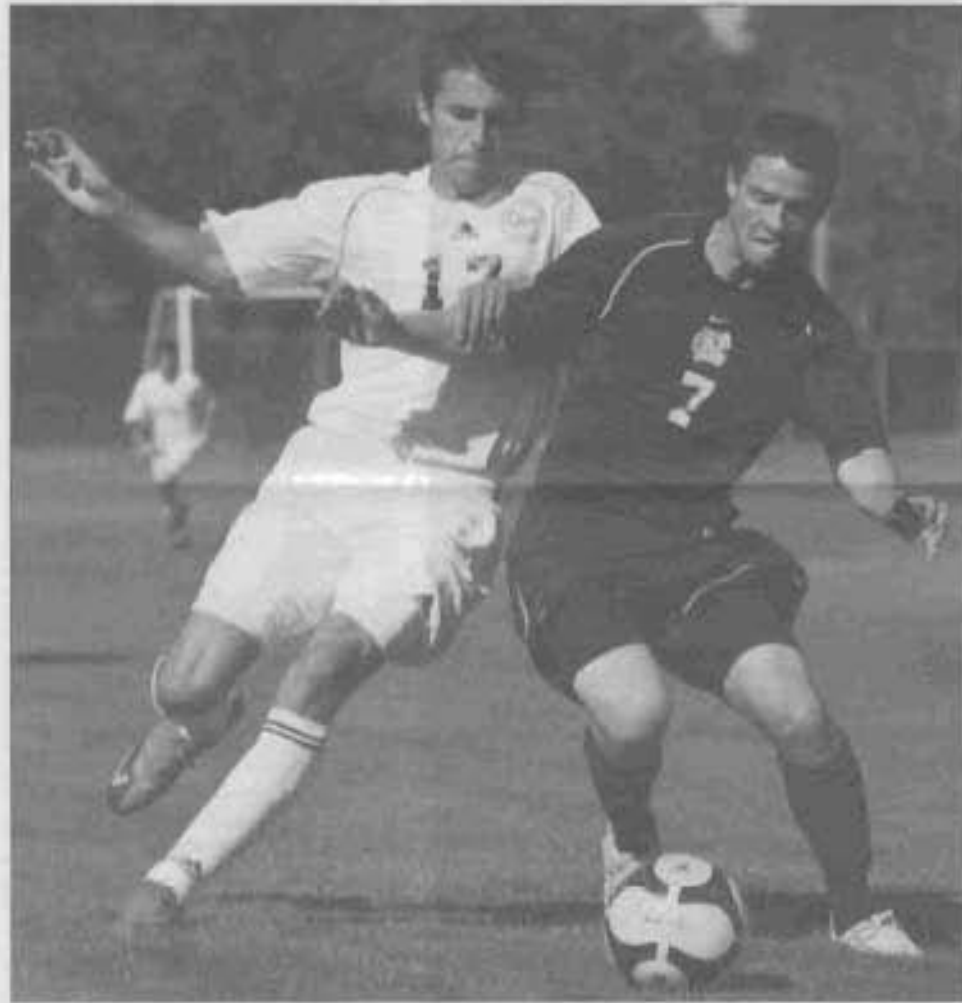


PHOTO BY TED CHARLES

LEFT: First-year Giancarlo Santora battles a defender for the ball earlier this season. He is one of 17 first-years listed on the 2010 men's soccer roster, according to golutes.com.

## Edgeworks Climbing

INDOOR ROCK GYM

### No Initiation Fee!

PLU STUDENTS - Save \$60 when you become a member!  
 (Offer good through 10/3/10 with valid WA student ID)

- Student Discounts
- Indoor Climbing
- Event / Party Space
- Yoga & Pilates
- Outdoor Guiding
- Group climbing
- Private Instruction
- PLU Climbing Club
- Climbing School
- Overnight Lock-Ins

6102 North 9th Street  
 Tacoma, WA 98406

(253) 564-4899  
[www.edgeworksclimbing.com](http://www.edgeworksclimbing.com)

## Scorecard

### Men's Soccer

as of 9/8

NWC Standings				
Team	NWC	%	All	%
Pacific (Cre.)	0-0	0.000	2-0	1.000
Whitworth	0-0	0.000	2-0	1.000
Willamette	0-0	0.000	1-0	0.833
LPS	0-0	0.000	2-0-1	0.625
Whitman	0-0-0	0.000	2-1-1	0.333
Luther	0-0	0.000	1-7	0.290
PLU	0-0	0.000	0-2-1	0.147
George Fox	0-0	0.000	0-7	0.000

- Team Points Leaders**  
 Chad Kearns - 4, Daniele Zaccagnini - 2, Surafel Wodajo - 2, Spencer Augustin - 1
- Team Goals Leaders**  
 Chad Kearns - 1, Surafel Wodajo - 1, Daniele Zaccagnini - 1
- Team Assists Leaders**  
 Chad Kearns - 2, Spencer Augustin - 1
- Team Saves Leaders**  
 Brian Kotz - 7, Jay Augustin - 2

### Women's Soccer

as of 9/8

NWC Standings				
Team	NWC	%	All	%
LPS	0-0	0.000	2-0	1.000
Whitman	0-0	0.000	1-0	1.000
L&C	0-0	0.000	1-0-1	0.290
George Fox	0-0	0.000	0-0-2	0.250
Luther	0-0	0.000	1-2	0.333
Willamette	0-0	0.000	1-2	0.333
Pacific (Cre.)	0-0	0.000	0-1-1	0.250
PLU	0-0	0.000	0-2	0.000
Whitworth	0-0	0.000	0-7	0.000

- Team Points Leaders**  
 David-Rose Edwards - 2, Olivia Lee - 1
- Team Goals Leaders**  
 David-Rose Edwards - 1
- Team Assists Leaders**  
 Olivia Lee - 1
- Team Saves Leaders**  
 Lauren Chambard - 7, Ivory Harvey - 2

### Football

as of 9/8

NWC Standings				
Team	NWC	%	All	%
LPS	0-0	0.000	1-0	1.000
Whitman	0-0	0.000	1-0	1.000
L&C	0-0	0.000	0-0	0.000
Luther	0-0	0.000	0-0	0.000
PLU	0-0	0.000	0-0	0.000
Pacific (Cre.)	0-0	0.000	0-1	0.000
Whitworth	0-0	0.000	0-1	0.000

- Passing Yards/YPG**  
 N/A
- Rushing Leaders**  
 N/A
- Receiving Leaders**  
 N/A
- Defensive Leaders**  
 N/A

### Volleyball

as of 9/8

NWC Standings				
Team	NWC	%	All	%
PLU	0-0	0.000	5-0	1.000
George Fox	0-0	0.000	2-2	0.500
Luther	0-0	0.000	2-2	0.500
LPS	0-0	0.000	2-2	0.500
Whitman	0-0	0.000	2-2	0.500
Whitworth	0-0	0.000	3-3	0.500
Willamette	0-0	0.000	2-2	0.500
L&C	0-0	0.000	2-3	0.400
Pacific (Cre.)	0-0	0.000	1-53	0.250

- Team Kills Leaders**  
 Kelsie Moore - 51, Erin Bremond - 39, Beth Hanna - 26
- Team Assists Leaders**  
 Sarah Beaver - 142, Blair Bjorkman - 8, Anna Buck - 5
- Team Blocks Leaders**  
 Erin Bremond - 14, Melissa DeWalt - 9, Allison Wood - 8
- Team Digs Leaders**  
 Blair Bjorkman - 70, Kelsie Moore - 57, Beth Hanna - 29

# Defensive woes trouble team in early preseason

## After two losses, women's soccer works to organize, prepare mentally and physically for NWC challenges ahead

**Brendan Abshier**  
 Mast Sports Editor  
 abshieb@plu.edu

The first weekend of competition has passed and so have first week jitters. The next step is to work out the kinks that led to the two losses for Pacific Lutheran women's soccer team at the feet of a 6-1 Carleton defeat on Sept. 2 and a 1-0 St. Thomas loss on Sept. 3.

The score of the game against Carleton doesn't tell the full story of the game. PLU was able to knock 10 shots of the Carleton goalkeeper, including a goal scored on a header from first-year Dani-Rae Edwards. Her goal came in the 63rd minute off a pass from junior Olivia Lee.

The breakdown of the Lutes' backline was the ultimate factor.

"Everything that happened between the two defensive lines wasn't so bad," Buffington said. "Organization and covering the back line were the biggest issues."

The team focused on defending and proper marking on the back line before the St. Thomas match. Buffington also said the team worked on altering their style of play.

St. Thomas put one goal into the back of the net, but it was enough to top the Lutes. The goal came in the 52nd minute and was one of five shots by St. Thomas in the second half, seven in total.

"Their goal on us was a

disappointment. It was a failure to organize defensively," Buffington said.

Cutting a five-goal margin to a one-goal margin against what Buffington said scouting reports called "a more competitive and more athletic team" exhibits what kind of team the Lutes possess on the pitch.

"It shows incredible recovery after a really tough loss," Buffington said. "We saw incredible discipline and improvement. We focused on the whole team playing a certain style and doing some things very specifically and we felt like we were successful in those areas."

Junior goalkeeper for PLU Lauren Chamber made five saves against St. Thomas and two more saves, while splitting halves with senior goalkeeper Ivory Harvey against Carleton.

"[We] had a bit of a rough start against the Minnesotans but we are definitely ready for conference play to start," said junior Jordan Daniels. "We're a pretty big team which adds a lot of competition all over the field."

The Lutes will take on Western Washington University Sept. 11 at noon for the Lutes' final preseason matchup. Buffington said she is looking for PLU to raise their level of intensity and structure to get ready for its Northwest Conference opener against Lewis & Clark Sept. 18 and Linfield Sept. 19.

"I want to see the true competitors, the dress competitors," Buffington said. "I'm looking for those opportunities on goal, discipline and organization."



PHOTO BY TED CHARLES

First-year Taryn Dee maneuvers the ball as an opposing player approaches in a match earlier this season. Head coach Lynnette Buffington said the Lutes will take on Division II Western Washington University Sept. 11 to further prepare the team for the Northwest Conference.

# Too hot for Cali?

## PLU volleyball builds momentum going into tourney

**Brendan Abshier**  
 Mast Sports Editor  
 abshieb@plu.edu

The Pacific Lutheran volleyball team has already won a tournament, advanced to the national rankings, and had a player earn Northwest Conference honors. Now, the team sets to roll on some positive momentum.

The Lutes went into the Whitman College Volleyball Invitational Sept. 4 after swiftly defeating Evergreen State in three straight sets. The tournament saw most of the same face for PLU's opponents, excluding Whitman. But the Missionaries took only set game from the Lutes before yielding the championship trophy to PLU.

That one set has been the only set the PLU squad has failed to take from its opponents.

PLU junior outside hitter Kelsie Moore earned tournament MVP after racking up 12 kills and 14 digs. Junior Erin Dremanne also helped push the Lutes forward, making her way to the all-tournament team.

"So far it's been a good start," senior Sarah Beaver said. "Kelsie Moore has been really strong with MVP and player of the week so - somebody to follow behind."

Moore's tournament performance helped boost her to NWC Player of the Week. She averaged 3.3 kills and a dig per set during the tournament. The three-year starter currently leads the Lutes with 51 kills.

"I wouldn't have been able to do it without the rest of the girls," Moore said. "We're a really strong team all around so that had everything to do with it."

Winning five games in a row without a loss does not earn a team a simple pat on the back. The Lutes also advanced into a tie for No. 16 in the American Volleyball Coaches Association (AVCA) Division III Top 25 Poll.

"It showed that we're pretty deep as far as talent is concerned and we've played well so far," head coach Kevin Aoki said.

PLU senior Beth Hanna has seen restricted playing time in the first series of matches because she is recovering from a knee injury which ended her 2009 season early. The Lutes have proven to be a squad that can produce with all players, despite the limited playing time of the three-time All-American Hanna.

"We spent a lot of time during preseason staying together whether people are hurt or able to play," Beaver said.

Beaver, who earned her way to the 2009 AVCA Division III Honorable Mention All-America list, has added to the offensive attack this year with 142 assists and 13 kills so far.

Aoki said Hanna is expected to return to full playing time for conference action.

"She's working her butt off so we're very excited," Moore said.

As a team, the Lutes have 2011 kills, 31 aces and 208 digs. This is an impressive balance of offense and defense, especially compared to opponents' 163 kills, 23 aces and 227 digs.

"It's good to see us playing at a high level and we need to continue to improve every day," Aoki said.

CONTINUED ON PG. 16

**Garfield BOOK COMPANY**  
 www.garfieldbookcompany.com  
 208 Garfield Street, Suite 101  
 253.535.7665

**Your College Bookstore**

**One Stop School Supply Shop!**

Follow us on Facebook

**NEW Fall 2010**

Trying to save money? We often beat big box pricing!

**DAKINE**

# Count down to kick off

**Brodan Ahbler**  
 Mast Sports Editor  
 abahler@plu.edu

Pacific Lutheran football will kick off the 2010 season as the third-ranked team in the Northwest Conference, according to the NWC Coaches' Preseason Poll released Aug. 3.

Lute Head Coach Scott Westering said the team doesn't use the preseason as a motivation factor and that the poll is mostly for the fans to look at.

"We're busy focusing on us and that's our approach: focusing on the best that we can be," Westering said.

Finishing above PLU in the poll were the 2009 NWC champions, Linfield Wildcats, who finished first in voting, and Willamette, who completed last season with a 3-2 conference record. Whitworth finished fourth in the voting just behind PLU.

PLU and Whitworth tied for third in the 2009 final standings, going 3-3 in conference action. The Pirates defeated the Lutes 24-21 in overtime last season.

The two biggest reasons for PLU's edge in the poll this



PHOTO BY TED COLEMAN

Senior receiver Kyle Whitford runs with the ball during the last week of practice before the Lutes' season opener Whitford finished third on the team with 364 receiving yards and three touchdowns in 2009.

year are two-time First Team All-NWC senior receiver Greg Ford and Second Team All-NWC senior quarterback

Jordan Rasmussen.

Ford completed 2009 with 1,120 receiving yards and 10 touchdowns on 70 receptions. He led the league with 124.4 yards receiving per game. He also broke his own PLU record for most receiving yards in a game, 292, against Gustavus Adolphus.

Not only does Ford threaten his own records, he also has a good chance to top numerous PLU football career receiving records.

Rasmussen threw for 1,910 yards and 16 touchdowns and only nine interceptions, finishing second in the league leaders list for passing.

When these two players connect they boost an electric Lute offense.

Also adding to the 2010 offense will be senior Drew Griffin. Griffin was a member of the All-NWC second team, catching 39 passes for 370 yards and five touchdowns as a slotback.

"We have 10 of 11 starters returning on offense," Westering said. "We are very excited about this team."

PLU has the pleasure of a large amount of offensive returners, but the defensive squad will only consist of four returning starters from 2009.

Junior defensive back TJ Suek will help drive a defense that lost its three leading tacklers to graduation. Suek earned 2009 Academic All-District while bringing down the ball carrier 43 times, adding one interception. He finished seventh on the NWC defensive backs tackles list.

Up front, junior defensive lineman and 2009 All-NWC honorable mention Erik Magnussen will help to stop opposing offenses after gathering 40 tackles, seven tackles for loss, three sacks, an interception, one fumble forced and a league-leading three fumbles recovered in 2009.

PLU's main conference challenges will be Whitworth Oct. 9, Linfield Oct. 23 and Willamette Nov. 13. All three games will be home games for PLU at Sparks Stadium in Puyallup, Wash.

The Lutes' season begins Saturday at Hamline in St. Paul, Minn. at 10 a.m. PLU will return for its home opener Sept. 18 at 12:30 p.m.

"Our guys love to be together," Westering said. "When you enjoy being together you can take ordinary things and make something out of them."

CONTINUED FROM VOLLEYBALL, PG. 15

This weekend PLU will take on La Verne at part of the California

Invitational at California Lutheran in Thousand Oaks, Calif.

La Verne ended the 2009 season ranked No. 25 in the final AVCA poll and are on the "others receiving votes" for the current top 25 poll.

The tournament starts for the Lutes Sept. 10, where they will be playing against Chapman at 3 p.m. and against Whittier at 7 p.m. PLU will take on La Verne at 3 p.m. and Cal Lutheran at 5 p.m. on Sept. 11.

"We're really excited for this weekend," Moore said. "We really hope to do some damage in California." PLU begins conference action at home Sept. 17 against Whitworth at 7 p.m.

## PUYALLUP FAIR

### Concert Series

Presented by Columbia River

 <b>JUSTIN BOOTS RODEO PLAYOFFS</b> Tickets start at \$3*	 Justin Boots Rodeo Playoffs followed by <b>BRET MICHAELS</b> "Honey and Mustard" (New CD) Tickets start at \$30	 Justin Boots Rodeo Playoffs followed by <b>KTROOPS</b> Tickets start at \$16	 Justin Boots Rodeo Playoffs followed by <b>ASLEEP AT THE WHEEL</b> Tickets start at \$17	 Justin Boots Rodeo Playoffs <b>PUYALLUP FINALS</b> Tickets start at \$30
 <b>KENNY ROGERS</b> with the INDIANA BROTHERHOOD Tickets start at \$20	 <b>JOHN LEGEND</b> with Special Guests SHAWN JAMES & THE BAP BROTHERS Tickets start at \$35	 WILLIE NELSON and FAMILY Tickets start at \$25	 <b>CHRIS BOTTI &amp; NATALIE COLE</b> Tickets start at \$25	 <b>DIERKS BENTLEY</b> "Home and Away" (New Album) Tickets start at \$25
 <b>QUEENSRYPHE</b> with Special Guest TESLA Tickets start at \$25	 <b>ADAM LAMBERT</b> with Special Guest ALLIEN PRINCE Tickets start at \$25	 <b>DARYL HALL &amp; JOHN OATES</b> "The What You See Is What You Get" (New CD) Tickets start at \$25	 <b>MERCYME &amp; JEREMY CAMP</b> Tickets start at \$20	 <b>BILLY CURRINGTON</b> with Special Guest UNCLE KRACKEN Tickets start at \$25

  
**FIESTAS PATRIAS**  
 Free with Fair gate admission

  
**KSD ROCK**  
 Tickets start at \$40

  
**HEARTY**  
 Tickets start at \$25



Most shows reserved seating and include FREE Fair gate admission\*, an \$11 value!  
 Tickets at thefair.com, Ticketmaster outlets, or 1-800-745-3000, 24-hr. info: 253-841-8045.  
[thefair.com](http://thefair.com)