

The Mooring Mast

Hello Grads,
Welcome Home!

VOL. 27

PACIFIC LUTHERAN COLLEGE, FRIDAY, OCTOBER 28, 1949

NO. 6

Jean Hesla Is Homecoming Queen

Alumni To Be Honored By Special Programs

Get on the ball—it's rolling! Homecoming, the event anxiously anticipated for weeks, is finally here and will roll right down the Student Union Building alley, starting this evening.

Friday, 7:45 p.m.—The two Homecoming plays, ready and polished as a hall-bearing, will be given at 7:45 tonight. Price of entrance is twenty-five cents, admission to be used for royalties of the plays.

Later: Don't go home after that, though. A procession will form as soon as the plays are over and students will receive torches to carry down to the vicinity of the Memorial gymnasium, forming a torchlight parade. All torches will be thrown into the bonfire at the beginning of the pep rally that is to follow.

Saturday—
10:00 a.m.—All floats and cars must be ready by this time.

10:30 a.m.—The parade will leave the gym and proceed down the yellow

2:30 p.m.—On the program for the Coffee Hour to be held in the afternoon, is the quartet and incidental organ music. A contemporary activity is the student movies to be shown in S-108 at 3:00 p.m.

4:00 p.m.—Winding up the celebration and royalty days will be a farewell rally in the SUB lounge.

One-Act Plays Set

The contribution of the Speech department of Pacific Lutheran College to Homecoming festivities will consist of the presentation of two hilarious one-act plays, sponsored by Alpha Psi Omega, honorary dramatic fraternity, and the Curtain Call Club.

The public is cordially invited to attend these presentations which will be offered Friday evening, October 28, at 7:45, and Saturday afternoon the 29th, at 2:15. There will be no admission charge for alumni; registration tickets will be their admission. Students will be charged 25 cents.

Parade Leaves Gym 10 a.m. Saturday

The sun will be shining at PLC Saturday in spite of the weather. Two of the day's highlight events, the crowning of the queen and the annual Homecoming parade, should help to make the day a glowing success.

Entries in the parade will assemble in front of the Memorial gymnasium at 10 o'clock Saturday morning. Phil Falk, Homecoming committee man, urges that all floats participating be on time. Stragglers will be left behind. Promptly at 10:30 a.m. the caravan, escorted by the Washington State Patrol, will get underway.

At approximately 11 o'clock the parade will have reached the city limits where the Tacoma police will assume the escort service.

Entering Tacoma on Pacific Avenue the procession will turn west on Ninth and return to Parkland, via Broadway, Jefferson, Lincoln and Park Avenues.



WINNING over three other contestants in the semi-finals Wednesday, Miss Jean Hesla will reign as queen over the Homecoming celebration Friday through Sunday. She will be crowned at the half-period of the game with Whitworth tomorrow night.

Jean Hesla became PLC's 1949 Homecoming Queen by reason of the majority of votes cast in a record student body vote. The attendants will be Margie Anderson and Doris Johnson.

The young lady who will be doing the honors as the reigning sovereign of the Homecoming festivities is a senior, and is well known on the campus for her engaging personality and general attractiveness. There seems to be no doubt that she will do justice to her position as queen.

Her Majesty, Miss Hesla, is scheduled to grace several events with her presence during the Homecoming weekend. She will appear at the one-act plays to be given in the SUB auditorium, at the day-girl-dorm girl touch football gigantic behind Old Main, at the bonfire during the pep rally, and will ride in state at the head of the Homecoming parade. On Sunday, she will be honored at a tea to be given by the AWS in the SUB auditorium.

Our choice for royalty will be crowned at the official coronation ceremonies which will take place in Lincoln Bowl. The time for the coronation has been set as the half-time break in the Late-Pirate grid clash that starts at 8:00 p.m., tomorrow. The queen will be robed, as will her praiseworthy attendants, in royal attire of black and gold velvet. All precautions have been taken to protect the queen and her princesses from a drenching in the case of rain. (Perish the thought).

With felicitations to Queen Jean and her attendants, the students of PLC will be out in force to pay homage to their royal choice, and to participate in the Homecoming program.

Campus Grid Classic Set Saturday Back Of Main

The Evergreen Conference title will be decided Saturday afternoon in one of the most critical games of the season, when the Galloping Girdles meet the Bruisin' Bustles on PLC's home field (behind Old Main, that is). The game will start about 3:30 p.m. This is the first and last game for both teams, and from the looks of their turnouts, it will really be a battle. Excellent coaching has really put the girls in good shape.

Coaching for the Bruisin' Bustles is Lee Amundson, ex-All-American who lists his probable starters as: Jodie Triola, right end—From Eugene, Ore. She was offered a football scholarship to the U. of Oregon but

preferred PLC instead, where she was all-conference end along with Morris last year. 6'2", 195 pounds.

Helen Enger, left end—6'6", 230 pounds. This girl, although a freshman, is really terrific. She is leading the league in scoring with 247 points. Hasn't missed a pass all season. (??).

Gladys Busacker, right tackle—5'2", 225 pounds. Hails from Portland, Oregon, where she played right tackle for Jeff four years, all-city three years, and was offered a scholarship to Notre Dame. This is her second year at PLC—all-conference last year.

Betty Hansen, left tackle—5'7", 222 pounds. Played left tackle for Grant

Continued on Page Four

Meet Elberson; Student Council

Ladies and gentlemen, meet Stan Elberson, Student Body treasurer and Student Council member. Stan is 21 years old and a junior at PLC. Olympia, his home town, was the scene of his graduation from high school. Stan is a Marine Corps veteran of the last war.

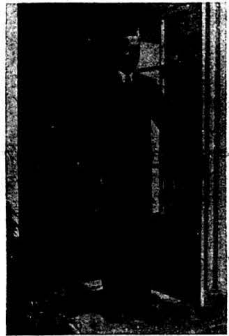
Stan is majoring in mathematics. His minors are speech and chemistry. Tentatively, his plans are to teach after graduation.

Last year Stan was president of the sophomore class. He was also at the helm of Curtain Call Club as a sophomore. Stan is especially interested in drama as an extra-curricular activity. He is a member of Alpha Psi Omega, honorary drama fraternity, and Curtain Call Club. Stan is currently appearing in the all-college production, *Stage Door*, as the male lead in the person of one—Keith Burgess. Mr. Elberson also holds membership in Tawasi, honorary men's society.

Regarding the Student Council, Stan stated that "Council meetings are open and that ideas and suggestions concerning any event or project would be welcomed by any member of the council. The Council can best serve you, the student body, by knowing what you want."

Pay Your Bills

It was requested by the business office to announce that October 20 was the date for the second payment of student bills.



Dean Hauge

"Dean's Welcome"

The welcome mat is always out at Pacific Lutheran College for alumni, but once or twice each year the college family is particularly anxious to see the old alumni on the college campus. This is particularly true for Homecoming.

This year 993 students join the Faculty and Staff in welcoming you to the 1949 Homecoming. Phil Falk and Ed Rosin, co-chairmen of the 1949 Homecoming, and the College Family as a whole are eager to make this year's activities the best yet. We hope you plan to be here. We will be looking for you.

line towards Tacoma. At 11 the city police are scheduled to meet the parade and escort them through town.

2:15 p.m.—For the benefit of the Homecomers who missed the plays Friday night, the presentations will run a second time.

Following the play will be the great football clash between the all freshman team, the Galloping Girdles (DRG) and the Bruising Bustles (DPK) going on back of the Old Main, the ground of the "battling sex."

8:00 p.m.—The game! Half-time claims the coronation. Mr. Karl will act as master of ceremonies and Eldon Killo will perform the coronation.

Sunday—
11:00 a.m.—Special church services will be held at Trinity Lutheran Church with Raymond, Pfleger



ROYAL PARTY—Shown above is the queen and her two attendants who will be honored during Homecoming. Left to right: Doris Johnson, Jean Hesla and Margie Anderson.

The Mooring Mast

Published every Friday during the school year by students of Pacific Lutheran College.
Entered as second class matter, October 2, 1925, at the Post Office at Parkland, Washington.
Office: Student Union Telephone: GRanite 8611
Subscription price—\$1.50 per year

Printed on the Campus by La Crosse Printing Company

EDITOR LOU INNERARITY
ASSISTANT EDITOR MARLENE SCHWENKE
Editorial Staff Sports, Bob "Stretch" Ferguson; Religion, Alan Hatlen; Speech and Language Arts, Donald Graham; Society, Lillian Leikauf; Drama and Music, Carol Schuler; Copy, Edna McCall.
Composing Staff Verne Brauvelt, manager
Special Writers Glenn Clark, Norman Hawkins
Reporters Don Breimo, Glenna Nelson, Dorothy Broomfield, Bill Morgan, Don Gannon, Beverly Allen, Luther Kroenk, Steve Kennedy, Helen Enger, Olive Knutson, Roy Berg, Bob Johnson, Barbara Johnson, Stan Kuern, Jo Ann Nelson, Frances Biery, and Jon Ericson.
Business Staff Phil Falk
Advertising Jo Ann Nelson and Dorothy Broomfield
Circulation Marion Cummings and Jo Friday

Welcome, Graduates

Expressing a welcome to people whom you know you do not know, but feel that you do know, is the difficult position in which most of the students of PLC find themselves at Homecoming time.

We know of the graduates of the school in many instances by the token of a knowledge of their activities, and we know others by name and face, but we know all of them as a general and important group that represents the total result of the efforts of the college. Even though the greatest majority of you people who have preceded us through these paths, and yes, by-paths, of learning are strangers in actuality, we feel within ourselves that you are as much a part of the school as we are. We also feel a welcome to you that is not capable of complete analysis or explanation.

Perhaps it could best be summed up as a common association that we experience together, but across an expanse of time. We are the ones who have picked up on the immediate scene where you have left off, class by class, in the years gone by. Are we not in reality schoolmates of different years, but of the same college? Are we not proponents of the same general principles that you formed years ago and that we are now in the process of realizing and adopting? It might be said that we are here only because you were here, and that others will follow because we are here.

These, then, are the feelings which lead us to our expression of WELCOME, a word that has meaning to us in its fullest sense. Be sure that we are glad to see you here.—LAI.

Royalty at Large

In contrast to the system of royal succession that is practiced by the sovereign heads of nations, the college campii all over the nation choose their queens by the majority vote of her subjects-to-be.

Does this popular acclaim method of selection detract from the honor of the position? On the contrary, the popular system adds to the honor. No queen can be more of "A queen in her own right" than the young lady who has been selected as PLC's Homecoming sovereign. She was honored by her fellow students because she was their popular choice, because she was looked upon as the one person on the campus who would best be suited to grace the Homecoming throne.

She was not wished upon us by fate, or brought to us by accident of ancestry, but rather she was called to take her place as queen among the women of our campus. The choice of Jean Hesla by her classmates makes her rightfully a queen, and may her reign, though short, be a happy and unforgettable one.

The Mooring Mast joins the rest of the student body in *Congratulations to the Queen*.—LAI.

Need Some Hot Water?

If you are in need of a drink of hot water to aid your digestion, or just to help you relax for your next class, then try the drinking fountain located on the lower floor of the library. It just may be that the water comes from a mineral hot springs, but if this is the case, then let us all know so that we may benefit from its curative effects.

I Said "I'm Sorry"

In last week's "Democracy at Work" editorial on the front page, a little mental transposition caused the phrase "innocent until proven guilty" to come out backwards. We thank our readers for bringing the error to our attention.—LAI.

If you like Pastry, you'll like Harry's ...

S.U.B. SNACK BAR

Crystal Ball

By Lou Innerarity

After the "dirty trick" that the crystal sphere played on yours truly two weeks ago, it tried to make up for its delinquent performance by turning in predictions for last Saturday that were four-fifths correct. The prediction score is now four right and six wrong.

Without too much faith in a crystal with a warped sense of humor, we peep into its nether regions and find that it still has faith in the abilities and perseverance of the little college out Parkland way. In bold, black "cloud-letters" that come from the innermost reaches of the sphere there is a win forecast over the overrated and outplayed Whitworth Pirates. With great reluctance it merely suggests a Gladiator scoring margin of 14 points.

The rest of the games are boldly prognosticated as follows:

Central Washington holding off a Savage attack and spilling the Chenevics from their conference-leading spot.

The sharp click of a successful passing attack in addition to the work of a hard-driving fullback in Bellingham spells the doom of a Ranger team that has already been thrice-injured in the conference.

A hard-charging Badger horde making the task of learning the ins-and-outs of American football a tough, but enlightening assignment for the Thunderbirds of UBC.

NO PREDICTION on the game between the Galloping Girdles and the Bruising Bustles. It is tabbed as the game of the year by sports writers across the nation, and everyone contacted has shuddered at the thought of making a prediction. All hands expect the game to be rough and bruising, full of rock 'em and sock 'em, with injuries debilitating the ranks of both teams before the final gun.

Raymond Electric Company

Engineers - Contractors
813 Pacific Ave. BR. 1712

BLUE SPRUCE UNION 76

PARKLAND GR. 9996

PARKLAND BARBER SHOP

MARSH and KNUXTSON

PARKLAND MEN'S SHOP

DON STRANDEMO
Garfield Street Parkland

DANIELS HARDWARE

ON THE HIGHWAY CORNER
PACIFIC AVE. & GARFIELD

A GENUINE 10% DISCOUNT ON SALES AND SERVICE ... WITH PRESENTATION OF A STUDENT UNION CARD.

Hal's College Radio
415 Garfield St. Parkland

From The Bench

By Brass

In the light of last week's experience at Cheney, there is one happy thought to bring back to the campus: the playing of Art (Scooter) Swanson was outstanding. Art went into the game, playing left halfback for the first time, and showed the true spirit of PLC, by not giving up and always trying.

A little of "Scooter's" background may be necessary to prove this writer's point. Art played high school ball for Puyallup and in his first year of ball won all-conference honors. In his senior year, he sparked the squad through a good season. No all-conference team was picked that year, but it is likely that he would have made it.

"Scooter" then moved to PLC with his friends, Hal Lyckman, Jack Bolland, and Fred Tregnell, (all footballers) and turned out for fullback, even though he only weighed 150. His only glory, before last Saturday, was that of holding the ball for Lyckman at the try-for-points.

Last week, he took a beating and proved himself as a passer and runner from the left half spot. This boy will undoubtedly see plenty of action the rest of his years at PLC.

WHITWORTH NEXT

After taking a fall against Western last week, Whitworth will be a tough nut for the Lutes to crack.

Sparked by the brilliant passing of Ed Kretz and the running of Vern Tucker, the Pirates invade the Lincoln Bowl with the idea of taking the glory away from the Gladiators in their homecoming game.

Kretz is now leading the league in the yards gained department with 1,140 yards. Most of this yardage has been made by passing; which is a special feature of the Pirates' attack. Approximately 75 per cent of their game

is passing. They also have an exceptional pass defense.

Consequently, this week's practice by the Lutes has been devoted to pass defense as well as sharpening up the offensive attack.

JUSTICE OUT

The services of Jack Justice were lost for the rest of the season, in last week's battle. Jack, better known as "Chug-Chug," has been holding down the offensive left tackle spot since the start of the season.

The Easterners put "Chug-Chug" out of action resulting from a knee injury. He has torn the ligaments in his right knee so badly that the "call for crutches" has beckoned him. Chalk up another for the already injury-ridden squad.

Guard Roy Hagen tried scrimmaging a little too early a week ago and was doing fine until a repeat of his shoulder injury forced him to the sidelines for the rest of the year.

The late bit of rumor to hit the campus is that Jack Ostrander, an outstanding speaker, will introduce the new intra-mural program during Student Body Day in Chapel next Tuesday.

SPLINTERS

A report on the Harshman-Tommervik touch-eride rivalry: Harsh's team seems to be winning most of the battles. "Poor refereeing," says Tommervik. More about Whitworth: Continued on Page Three

BLUE RUSTIC

UNDER NEW MANAGEMENT
We feature home-cooked meals and home-made Pies and Donuts

YOU'LL LIKE
JIM'S BARBER SHOP
Airport and Pacific

WEDDINGS - CORSESAGES - FUNERALS
Stella's Flowers
Artist in Flowers
Parkland Center GR. 7863

The CLEAN Place to Buy and Store Your Meat at Lower Prices ...

PARKLAND LOCKERS
A. J. (Slim) STERN
11012 Pacific Ave. GR. 7111

PARKLAND AUTO PARTS

IN CONNECTION WITH
Parkland Fuel Oil & Service Station
GRanite 8112 Parkland, Wash.

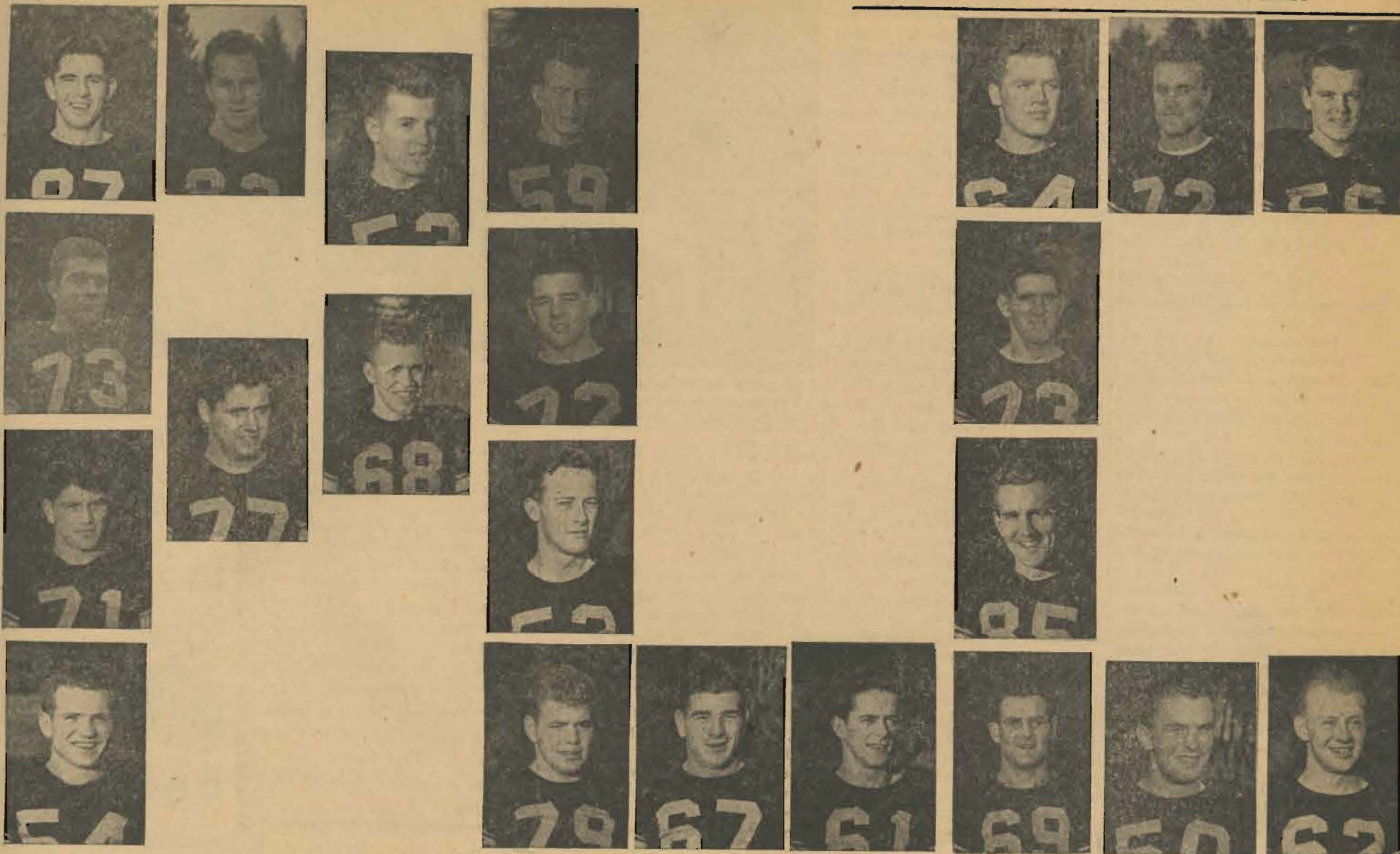
SEE OUR SCHOOL TOGS
For Men and Women!



Parkland XXX

Featuring the ...
Merchants Lunch, 50c
STUDENT MEAL TICKET
A \$5.50 Value for \$5.00
Two Blocks North on Mt. Highway





Homecoming Contest; Pirates Versus Gladiators

Continued from Page Two
Kretz also leads the league in the passing department with 52 completions out of 105 attempts, for a total of 853 yards; Sam Adams has caught 28 forwards that were good for 447 yards; Bob Cruzen, Buccaneer end, is riding high atop the scoring column with 38 points. That's 30 for today—see you at the PEP RALLY tonight.

EVERGREEN CONFERENCE STANDINGS

	W	L	T
Eastern Wash.	3	1	0
Puget Sound	2	1	0
Central Wash.	2	1	0
Whitworth	2	2	0
Western Wash.	1	1	1
Pacific Lutheran ..	1	2	1
St. Martin's	0	3	0

Games This Week

Central Washington vs. Eastern Washington at Cheney, 2 p.m., Saturday.
Whitworth vs. Pacific Lutheran at Tacoma, 8 p.m., Saturday.
St. Martin's vs. Western Washington at Bellingham, 8 p.m., Saturday.

Warring Savages Scalp Lute Squad

A war party of 11 Savages from EWCE massacred the hopes of the PLC Gladiators for a shot at the conference title last Saturday night. The Savages got away with the ball game by a margin of 15 points in the game that ended with a 21 to 6 score.

From the opening kick-off to the end of the first quarter it appeared from the stands that the Lutes were going to more than hold their own for the entire game. With Eastern booting to PLC, Hank Habegger took the ball back past the midstripe, where the Lutes started on their initial first-and-ten. The first quarter ended in a draw, but from there on the ball game went more and more in favor of the Savages.

The Lutes' pass offense that has stood them in such good stead in the past failed to click, and the Easterners got away with more interceptions than the Glads could afford to part with. The Lute-tossed passes that failed to complete were a largely contributing factor to the low score that they racked up.

Lowell Knutson and "Scooter" Swanson were the spark of life in the backfield, and two completed passes from John Jurkovich to Lowell Knutson accounted for the single TD on the Lutes credit ledger. The line played a good defensive game, and the majority of the Eastern ground gains seemed to come on first downs, but the linemen made it tough to gain the few extra yards on second, third and fourth downs.

Harold Lyckman, frosh quarterback, averaged better than 35 yards on his punts and drew admiration from Eastern rooters as well as PLC fans. Injuries were sustained by Jack Justice, Hal Fallstrom, and Hank Habegger. Justice suffered a leg injury that was at first feared to be a fracture, but he is attending classes with the aid of crutches. Hal Fallstrom aggravated a leg injury that he incurred earlier in the season. Habegger came out with a broken hand.

The loss to Eastern places PLC's conference hopes in the realm of miracles that are not likely to happen. They take on the twice-beaten Whitworth Pirates in Lincoln Bowl tomorrow at 8 p.m.

Patronize Your Advertisers

The Whitworth Pirates, who started out strong and then lost the last two games, will do battle with the Gladiators tomorrow night in Lincoln Bowl in PLC's homecoming game.

It promises to be a fast, thrill-packed game with both teams planning on throwing plenty of passes before the final gun. Whitworth is leading the league in passing, and Tommervik has been drilling his boys in pass defense all week.

Whitworth leads the Evergreen in team passing, Ed Kretz is leading individual aerialist, and Sam Adams is the pass grabber. Whitworth's passing attack must be stopped or the Gladiators will have a miserable homecoming game.

The biggest change so far this year took place at Luteville when Coach Tommervik moved big Vern Morris all-conference end, to a defensive half-back spot. Big Vern is no stranger to the backfield either, as he played in the backfield at Bellarmine for three years. But he will not play this position all the time. He will continue to operate as a flankman when the Lutes have the ball.

Bob Dinsmore, ailing since the Western game, has returned to full time duty and should be ready by tomorrow night. Bill Stringfellow is still bothered with a bad ankle and it is not known how much action he will see. Jack Justice, Ray Hagen, Ole Magnusson, and Hank Habegger will be out probably for the rest of the year.

FRANWELL'S
Waffles
our specialty
772 BROADWAY

FOUNTAIN PEN REPAIRS
QUICK SERVICE

Mobley's Jewelry
Garfield Street — Parkland
REASONABLE RATES
Under New Management

Mrs. Frisbie's BAKERY
For Good Bakery Products
710 So. 38th St. GA. 7591

SEARS
Roebuck & Co.
1148 Broadway BR. 4321

TRY FLETCHER'S — *The Vets Do*
Groceries -- Meats -- Vegetables
Frozen Foods
FLETCHER'S MARKET
FREE DELIVERY Granite 8550

Call . . .
B & B GLASS AND PAINT CO.
for
ALL GLASS NEEDS
Complete Service
748 MARKET STREET MA. 1442

When You Want Office Supplies
C. Fred Christensen
STATIONER
913 Pacific Ave. BR. 4629
Tacoma, Wash.

THREE-DAY SERVICE
on Laundry, Cleaning and Repairing
24-HOUR SERVICE AT PLANT
Fashion Cleaners
PICK UP and DELIVERY
GA. 3372 3820 Yakima

PARTY CAKES and ICE CREAM
CUP CAKES
22 Flavors of Ice Cream
PARKLAND DELICATESSEN
GARFIELD STREET

ON THE CAMPUS
For Your Convenience . . .
● Personal Stationery
● Programs
● Christmas cards imprinted
● Tickets, etc.
● We print your Mooring Mast
LaCrosse
Printing Company
On the Campus, Old Chapel Bldg.

Campus Grid Classic Is Set

(Continued from Page One)

Hi in Portland for four years. This is her freshman year at PLC, but she has played in every game this year.

Margaret Kutz—Bubbling bruiser who played for the Astoria Fish Mongers three years, weighs 357 pounds, is 5'5" tall, a soph and played good ball all year as PLC's right guard.

Norma Anderson—5'8", 259 lbs. Freshman this year and plays clean ball. More people are carried off the field because of her than any other one player. Expect great things from this left guard.

Jan Olsen, center for PLC, hails from Gresham High in Oregon, where she played on the Oregon upstate team for two years. She was the Inspirational Award winner in her senior year. It is her second year of ball at PLC.

Donna Hellman—5'2", 150 pounds. Also from Portland, where she developed her terrific set of vocal cords. It's possible to hear any play being called, even if Donna whispers. She lost quite a bit of practice this season because a printing press fell on her foot injuring her temporarily.

Joan Soaper—6'4", 210 pounds. Kicking artist of the squad. Her kicks have been good 199 out of 200 times for the point after touchdown. She really is tops as the right half.

Phyllis Isvick—5'10", 198 pounds of solid dynamite, who plays good as left half. She also has had the added advantage of extra private coaching.

Lillian Leikauf—5'13", 325 pounds. Captain of the team and called the most offensive player on the squad (even her best friends won't tell her).

Besides these able players, there are reserves that stack up pretty good:

Joyce Larsen, 5'8", 234 lbs., second year at PLC.

Carolyn Rhea, 6'4", 124 lbs., quarterback reserve, and another fast gal.

Marilyn Wallen, 5'4", 369 lbs., good line sub and has had plenty of experience.

Annie and Olie Isaksen, 5'4", 356 lbs.—a terrific sister team in the line and will probably see lots of action Saturday.

The roster for the Galloping Girdles, snappy all-freshman day girls' team, comes almost intact from Lincoln High of Tacoma. Eight girls from the starting line-up were members of the Lincoln varsity team which won the cross-state championship last year.

Coach Milt Hefty and the assistant coach, Jim "Unsung" Kerns, have been recognized by Stephens, Bryn

Mawr, and Mills colleges as renowned athletes. The two have spent the last year in observing the football tactics of these fine institutions.

The coaches have released the following starters:

Barbara Warner, right end—4'8", 79 pounds. Sumner High, Sumner. Barb doubled as a member of her high school's football team and as the assistant coach of the U. of W. Their loss is the Girdles' gain.

Grace Keyes, left end—6'0", 81 pounds. Lincoln High, Tacoma. She turned down offers from CPS and Whitworth to play on the Girdles' squad. Does a splendid job in snagging passes and opponents' nylons.

JoAnn Grambo, right tackle—6'2", 100 pounds. Lincoln High, Tacoma. "Beanpole," who is a good fighter, is expected to play a fine game—she rarely misses.

Eunice Eide, left tackle—4'7", 74 pounds. Lincoln High, Tacoma. She turned down a scholarship to Perdue to be with her classmates at PLC.

Shirley Furseth, right guard—4'8", 75 pounds. Stadium High, Tacoma. She won the Stadium football scholarship to PLC and proved her athletic qualities in the all-state as an athlete of championship ability and has had much experience in body guarding.

Betty Hall, left guard—5'1", 77 pounds. Lincoln High, Tacoma. Betty is a three year all-star and a grand spirit booster for she entertains the girls in the huddle with her tuneful whistling.

Marilyn Patterson, center—4'9", 72



A SNAPPY TIME is promised by the Bruisn' Bustles, representing the Dorm girls, shown above at practice. The other contestants, the Day girls, will hold up their end of the tight game. The Galloping Girdles were not available for pictures.

pounds. Lincoln High, Tacoma. This ex-Lincolnite, who last year won the inspirational award, will see a great deal of the ball this Saturday as she will be standing over it most of the time. (Co-captain).

Carol Schuler, quarterback—7'2", 90 pounds. Lincoln High, Tacoma. Joined fellow teammates at PLC and will burn up the gridiron with some legal quarterback sneaks. (Co-captain).

Jo Friday, right half—4'6", 70 pounds. Lincoln High, Tacoma. Friday, who turns out ever Monday and Wednesday, is continuing in her usual position and undoubtedly will prove as reliable as she'd better be for the afternoon game.

Donna Peterson, left half—5'8", 85 pounds. Lincoln High, Tacoma. Playing on a varsity team is no new thrill for Donna as she has been on one for three years in her high school and in the all-state. Here's one girl who can stretch those footballs into the end zones for the Girdles.

Shirley Hansen, fullback—4'4", 73 pounds. Stadium High, Tacoma. This gal still has the pep and steam which won for her the inspirational award all three years she attended Stadium.

The battle will be fairly judged and everyone is requested to attend and root for their favorite team—even Lou Innerarity without his foggy crystal ball.

WHERE ALL COEDS SHOP

GREEN
RED
BROWN



\$6.95

BAXTER'S
918 Broadway

Welcome Home Alumni

COMPLIMENTS ON HOMECOMING
from
Jensen's Barber Shop

SEE QUEEN'S COURT PICTURE
at
MYRTLE MOCKEL
Apparel of Distinction
Parkland GR. 7617

Sunset Furniture Co.
Floor Covering -- Window Shades -- Sherwin
Williams Paints
PARKLAND, WASH.

Young's Gift Shop
GOOD LUCK
ON A SUCCESSFUL HOMECOMING

We're Rootin' for You Lutes
Parkland Jewelers
BEAT 'EM!



GOOD LUCK, LUTES
from
Johnson's Drug Store
"Where Smart Students Buy"

Parkland Shoe Store
★
GOOD LUCK
ON SATURDAY'S GAME

★
College Book Store
WELCOME HOME, ALUMS
★

Jean Hesla, Homecoming Queen

College Dress Shop
We're With You, Team, So Fight!

HAPPY HOMECOMING
KLOPFENSTEIN'S
Quality in Men's Apparel
937 Broadway BR. 2236

DILL HOWELL
Wilson Sports Equipment
929 Commerce t MAin 5665

SEE US AFTER THE GAME
Bevington Triple XXX
924 Puyallup Ave. BR. 1477

GIL GUNDERSON'S
Suits Tailored to Your Measure
749 Broadway MAin 6803

Lincoln Bowling Alleys, Inc.
3828 South Yakima GA. 2322

Come on Lutes LET'S WHIP THOSE WHITS

The DONUT BAR
TAKE A DOZEN TO THE GAME
Parkland GR. 9950 Tacoma HI. 3081

98th ST HARDWARE STORE

NEAL E. THORSEN
TRICKS - JOKES - MAGIC
Costumes - Tuxedos - Serpentine
926 1/2 Broadway MA. 4861

PIPER FUNERAL HOME
phone HILLSIDE 8479
5436 So. Puget Sound Ave.

You'll Like to Bank in the Nearby Lincoln District

The Friendly
PUGET SOUND NATIONAL BANK
of Tacoma
LINCOLN BRANCH
3808 South Yakima Avenue
Member Federal Deposit Insurance Corporation

Tune In:
Your Own CAMPUS RADIO THEATRE

- COLLEGE OF PUGET SOUND
- PACIFIC LUTHERAN COLLEGE
- STADIUM HIGH
- LINCOLN HIGH
- SUMNER HIGH
- PUYALLUP HIGH
- VISITATION VILLA
- FEDERAL WAY HIGH
- CLOVER PARK HIGH
- ST. LEO'S HIGH
- ST. JOSEPH'S COLLEGE of NURSING

Every Wednesday During School Year
6:30 P.M.
1360 ON YOUR DIAL
KMO
*Broadcast — KTBI
9:30 A. M. Saturday

Sponsored by
Your TACOMA CITY LIGHT