

Carol Elefson and Ruth Jensen Elected to Head Saga Staff

CAROL ELEFSON and RUTH JENSEN, both juniors in the College of Education, have been chosen as 1946 Saga editor and business manager, respectively, a tabulation of Wednesday's balloting revealed. Carol, whose home is in East Stanwood, has taken an active part in campus affairs. She is president of the Women's Athletic Association and vice-president of the junior class. Last year she served on the DPK Council and was Viking Club vice president.

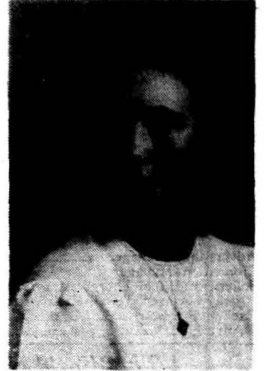
Ruth, who hails from Tacoma, has already had experience in keeping the Saga books balanced, having been assistant business manager last year. Ruth is well-known for her musical accomplishments, and is president of the Associated Women Students and junior class representative to the Student Council. In her freshman year she was snapshot contest chairman for the Saga.

Editorial and business staff members for this year's Saga have not yet been selected but will be announced in the near future.

The Saga, which appears at the close of the school year, is one of the main undertakings of the Associated Student Body.



RUTH JENSEN



CAROL ELEFSON

(Photo of Ruth Jensen by Kennell-Ellis)

Give
Thanks
For
Peace



Thanks-
giving
Vacation

VOL. 3

WEDNESDAY, NOVEMBER 21, 1945

No. 5

2 PLCites Have Poems Printed in Nat'l. Mag.

This fall as in former years, the National Poetry Association sponsored a poetry contest for students in all American colleges. Two PLCites, Telma Metzger and Ruth Johnson, submitted poems to the contest. This week the following dispatch was received by Dr. Herbert R. Ranson, English professor:
Dear Friend:

We take pleasure in announcing that the following poems, written by students of your college, have been accepted for publication in the Annual Anthology of College Poetry:

"Allegro" Telma Metzger
"Summerspell" Ruth M. Johnson
This Anthology is a compilation of the finest poetry written by the College men and women of America representing every State in the union. Selections were made from thousands of poems submitted. We heartily congratulate the students on this honor.

Thank you for your continued interest and cooperation in this work.

Cordially yours,

Dennis Hartman, Secretary

This is Telma's winning selection. Ruth Johnson's will appear in the next issue.

ALLEGRO

By Telma Metzger

The little waves on the lake gaily race
As they vie to be the first
To tell a brief snatch of joyous news
To the sombre sands.

Coming Events

TUESDAY, NOVEMBER 20—

Chapel program by senior class at usual chapel hour.

DPK Thanksgiving banquet.

WEDNESDAY, NOVEMBER 21,

3:40 P. M. TO MONDAY, NOVEMBER 26, 8:00 A. M.—

Thanksgiving recess.

WEDNESDAY, NOVEMBER 28

LDR meets at 3:45 p. m.

Class meetings at noon.

FRIDAY EVENING, NOVEMBER 30—ASB-sponsored movie.

Tacoma Concert Master Coaches String Quartet

The PLC string quartet is receiving special coaching from Mr. Harry Linden, concert master of Tacoma Philharmonic Orchestra, and father of Eugene Linden, conductor of Tacoma Philharmonic.

The recently formed PLC mixed quartet, consisting of Francelle Schoch, La Verne Linnerson, Albert Kuhn and Miriam Hopp, accompanied on the piano by Rumohr Gulhaugen, will sing at the Lutheran Church at Longview, at the morning services, Sunday, Dec. 2. The quartet sang at the PLC Thanksgiving banquet, November 20.

The PLC choir, which recently sang at the Veterans Hospital at American Lake, is expected to sing at the Western State Hospital at Steilacoom and the Custodial School at Buckley. Two Christmas concerts will be given by the choir during the holiday season.

WATCH DISPLAYS ON LIBRARY TABLE

Last week the library promoted displays for American Education Week and National Book Week. The displays are arranged on the tables to the right of the door as one enters.

The general theme of Education Week was education for the promotion of general welfare. It emphasized spiritual values, finishing the war, securing the peace, and developing good citizens.

National Book Week was sponsored by the American Library Association.

Every week there are displays of interest to faculty and students, some of which are nationally sponsored, but many are made on subjects just of general interest.

In previous displays since school started this fall, the art work of Thomas Hart Benton, Charles Birchfield, and Dale Nichols were shown. During American Art Week, November 1 to 7, Salvador Dali's art was displayed.

From Thanksgiving to Christmas there will be a display depicting worldwide Bible reading which will be promoted by the American Bible Society.

Threesome Chosen For Campus Cheerleaders

Pat Purvis, Lois Tollfeldt, and Jim Zittle have been chosen from a group of 10 students as the threesome to lead the school yell this year. Tryouts were held a week ago Tuesday, and a committee consisting of the student council, class presidents, and two members of the faculty selected the winners. Because conference competition was dropped during the war, there have been no cheerleaders the last two years.

Pat, Liberal Arts sophomore, from Sumner, is Sec.-Treas. of the Ice-Skating club, belongs to the Choir, and is active in W.A.A. and dramatics.

Lois, also a Lib. Arts soph., from Hoquiam, Wash., is sergeant-at-arms of the Soph. class, a member of the Choir and "The Little Symphony," belongs to W.A.A., and has worked on the Saga business staff.

Jim, or "Red," as he is known, is a Lib. Arts freshman and hails from Oregon City, Oregon.

Campus Deserted For Thanksgiving Recess

The four days from November 22 through November 25 will find the PLC campus strangely deserted of faculty and students, for "Thanksgiving recess begins at 3:40 p. m., Wednesday, November 21" (courtesy of the PLC Catalog).

This afternoon students will be rushing from classes to grab their suitcases and the next bus home. For many this will be the first opportunity since school started to see their family and old friends and to enjoy mother's home cooking (with all due appreciation of the wonderful meals provided for us here). Those students who live too far away to get home will undoubtedly be invited to the homes of those in nearer range.

With so many of us gone, Garfield Street, too, will look somewhat "vacated" without PLCites trekking the board walk to the Post Office, the Bug, the Blue Rustic, or Anderson's Grocery.

But come Sunday evening, things will begin to return to normalcy, and by Monday morning we will have shifted

(Continued on page four)

Major P. E. Hauge Enjoying Terminal Leave at Home

Back home again is Major Philip E. Hauge, college Dean on leave, who arrived in Parkland Saturday fore last after seven months overseas. Enjoying a terminal leave with his wife and two children, the Major expects to be placed on inactive status by February.

Since his visit to the campus last May Day, Major Hauge served as an Executive Officer of the 514th Air Service Group four miles north of Naha, Okinawa. Stationed there during the recent typhoon, he gives a glowing account of its effect. Since only one tent remained standing in his entire group, the men were forced to take refuge in tombs built in the side of the hill.

"Our boys," commented Major Hauge, "were slightly uneasy in this atmosphere of urns containing bones of deceased natives, but appreciated the safe, dry refuge from the typhoon. The American Army had tried to preserve the tombs as much as possible, closing the entrances with sandbags, but when the typhoon struck, the sandbags were hastily removed."

"Natives on the island speak Japanese. However," explains Major Hauge, "I observed many tall natives, which is not typical of the Japanese race. The

(Continued on page three)

Dramatic Class To Take Part in Broadcast

Moliere's "The Doctor in Spite of Himself" will be presented by the PLC Dramatics class, on the Campus Broadcast over KMO, Tuesday, November 27, at 8:00 p. m.

Rumohr Gulhaugen, Eleanor Hellbaum, Walt Kunschak, Louise Lunde, Patricia Purvis, and Silas Torvond made up the cast of "Bachelor's Baby," a production given at a Sherman School PLC program in Tacoma November 19, under the direction of Miss Clara Chilson.

"The Weird Sisters" is scheduled to be presented at the Parkland Community Club, on December 13. It is a play written by Wall Spence.

THE MOORING MAST

Published every two weeks during the school year by students of Pacific Lutheran College.
 Office: Room 130 Telephone: GRanite 8611
 Subscription price—\$1.00 per Year
 Entered as second class matter, October 2, 1925, at the Post Office at Parkland, Washington, under the Act of March 3, 1879.

EDITOR	ANITA STUEN
BUSINESS MANAGER	GRACE ELAINE GULHAUGEN
EDITORIAL STAFF	
Associate Editor	Alice Brudie
Sports Reporter	Walt Kunschak
Club Notes	Telma Metzger
Service Column	Ardys Bredvold
Special Writers	Daphne Hellman, Louise Tollfeldt, Anita Roth, Ruth Johnson
Adviser	Mrs. Ruth S. Frank
BUSINESS STAFF	
Advertising Manager	Rumohr Gulhaugen
Circulation Manager	Betty Hoyt
Solicitors	Mabel Thoren, Mary Jane Breton, Gladys Lea, Lorraine Ronken, Dorothy Skilbred, Jewel Keller, Kos-ah Wohlgenuth.
Exchange Editor	Verlyn Kraxberger
Adviser	O. J. Stuen

The World Needs A Thanksgiving

When we sit down to our loaded tables on this Thanksgiving day, let us not be complacent in our comfort. Let us not think only that our troubles are over and that all is right in "this best of all possible worlds." Instead, think of the millions who are starving all over the world. Remember that one-third of India always goes to bed hungry. Remember that there are people whose troubles are infinitely greater than ours ever were.

The war is over, but still there is no peace. We must not think that we can sit smugly back, saying that we won. Hurray! and now we can rest on our oars. No, for already some of our illustrious world statesmen seem to be in the process of working up another war. Now, as much as ever, we need to pray for peace and work for peace. We can be thankful that Christianity points the way to peace: and by following its teachings, not passively with lip service, but ardently and zealously, we can achieve our goal of "turning swords into plowshares."

Now Is the Time to Reconvert

Recently a petition was passed around for the "rebirth" of the Ski Club, and from here the proposal sounds good. Now is the time to start reorganizing some of our war-casualty clubs and make them going concerns. A few years back, half the fun of college was gained through the social organizations one belonged to.

Getting back to the Ski Club—it was organized in 1939 by nine snow-lovers: it grew and flourished until gas rationing called a halt to mountain treks. In 1941 the Tacoma Ski Queen was chosen from PLC's Club and in that year the ski team tied with CPS for top place in the intercollegiate meet at Paradise Valley. That is going to be quite a record to beat—but time will tell!

Another vanished club is the Linne Society which was voted the "most active club on the campus" in 1942. This was a club for all students enrolled in science courses and the calendar for the season contained many get-togethers, and the annual weekend outing to some nature-lover's retreat. This year a thriving club could be organized, what with the number of students enrolled in Dr. Schaefer's science classes.

One of the clubs, that many of us remember well was the Lute Boosters, Inc., which was formed for the purpose of stimulating activities at the college. The Boosters had their hand in every activity on the campus. One of their happiest contributions was the famed "Mirth and Mysteries" show, with such participants as Harty Hoff, Evan Carlson, Norm Holm, Hal Bruun, and a dozen or so of like energy.

These are just a few of the more active clubs of the past which would be worth reviving. A look through some of the past Sagas will show many more. A few of these added to our present extra-curricular calendar would make a fuller school year.

Every Week Is Book Week

Last week books were given special recognition as National Book Week appeared on the calendar.

As college students we should make every week a book week and take advantage of the knowledge that awaits us between the covers of a book. Bacon advises that "Some books are to be tasted, others to be swallowed, and some few to be chewed and digested . . ." In this manner we would receive double value for money expended in tuition during our four years in college.

ANDERSON LUMBER COMPANY

9802 PACIFIC AVENUE
 GRanite 7311

WITH THE LUTE S IN THE SERVICE S

Gene A. Snyder, H.S. '40, discharged from the Navy November 7, 1945 is now at home in Tacoma with his wife and baby. A pharmacist's mate, Gene served in the Pacific with the 1st Marine Division.

Roy Schmandt, ex '43, and his wife were recent visitors on the campus. Roy has been discharged from the Army and plans to enroll at the University of Washington.

The Rev. and Mrs. P. B. Hoff of Tacoma were pleasantly surprised one morning last week when their son, **Neil**, ex '42 and former M.M. editor, called from Rome, Italy. They enjoyed a three-minute conversation together, and were informed by Neil that he expects to be home by Christmas.

P.F.C. Carl Olson, ex '42, has recently been awarded the Bronze Star, received for heroism on Okinawa. Carl, expected home in January, plans to attend P.L.C. after he is discharged from the Army.

Another visitor on the campus last week was **Woodrow Arneson**, '38, who has just reported back to San Pedro, Calif., after spending a 30-day furlough at his home in Gig Harbor. He is stationed on the Battleship South Dakota.

Captain Roy Anderson, '41, who left the United States in February of '43, visited the campus on November. 15 while home on a 30-day furlough. Roy saw action in Africa, Italy, France (including D-Day), and Germany.

During his war experience he was the recipient of many decorations, including two from the French government. The Croix de guerre was awarded him for work with the supply department of the French 1st army during the battle of France. The second is a Liaison and Reconnaissance award.

On the expiration of his furlough, Roy will return to France to join the Closing Out Forcers there. He expects to return to the U.S.A. in August.

Ensign Art Larson, ex '43, son of our Swedish instructor, Rev. E.A. Larson, writes that his ship is now anchored in Tokio Bay.

PIPER FUNERAL HOME

5456 S. PUGET SOUND
 GARland 5436

Johnson & Anderson

GROCERIES - FLOUR - HAY - GRAIN - ETC.
 On the Mountain Highway Parkland, Wash.

SEARS, ROEBUCK AND CO.

Broadway at 13th

Your Old Friend Is Back

With Pre-War Goodness and Flavor

MEDOSWEET ICE CREAM

ALUMNI

A wedding of interest the past weekend (November 18) was that of **Ruth Fosso**, ex '45, and **Duane Gilbertson** of the navy. The bride's father, Rev. O. Fosso, performed the ceremony in the Anacortes Lutheran Church.

Present PLC students who attended the wedding were **Vedis Huseboe**, who sang, and **Albert Kuhn**, who played his violin. **Grace Knutzen** had charge of the guest books with **Norma Elfson**, ex '45.

Hjordis Rogen, ex '45, was married on October 13 to **Theodore Landsem** of Woodburn, Oregon. **Miriam Hopp** and **Francelle Schock**, present students, served the bride's cake.

George Davis, High School '41 and ex '42, was graduated on October 22 from the University of Washington School of Architecture. George is now teaching a class in freshman architectural design at the university.

THE NEWEST, LATEST
RECORDS
 and SHEET MUSIC
TED BROWN MUSIC
 1121-23 Broadway

Rhodes
 The QUALITY Store, Tacoma

FRANWELL'S
 OR
FINE
MOUNTAIN
FEATURES 772
 Brdwy

SELDEN'S

First in Floor Coverings

OCCASIONAL FURNITURE
 LINOLEUM - RUGS
 SHADES - BEDDING
 DRAPERIES

Major Hauge

(Continued From Page 1)

people are good workers. Native women had complete charge of our laundry service."

"The island is made up chiefly of coral which proved valuable in the construction of airfields there. When wet, the coral resembles cement and is used in surfacing the entire field."

"The harbor there is handicapped because many ships have been sunk in it, but eventually it will be a class A harbor. Native culture will benefit by road and drainage systems and leveling of land by the Army, a job which would take fifty years if done by the natives."

The Major was disappointed not to see any PLCites on Okinawa. (In the European theater he met Vernon Miller, ex '40 "while crossing the desert" and Ernie Perrault, recently discharged PLC Junior, in Egypt.) He sailed for home on October 20 aboard the U. S. S. Grant.

"My future plans are indefinite," states Major Hauge. "However at present I am content simply to enjoy my leave back home again with my family."

First Basketball Game Slated for Next Week

The Pacific Lutheran College Gladiators will see basketball action the week after Thanksgiving in a practice game, probably at the Fort, according to Coach Marv Harshman.

On schedule also is a game with Everett Junior College December 14. January 4 and 5 are dates of games with Seattle Pacific College, the first being held in Seattle, and the return being played here the next night.

The first conference game in which the Glads participate this season will be played here with Western Washington College January 10-12.

Coach Harshman commented that he is expecting an additional player to return soon from the army and two from the navy. His passing suggestion "to keep an eye on Perrault" will certainly be followed by every fan who has already seen Ernie in action.

The starting lineup as seen now will be: forwards, Harkness, Rediske; center, Neal; guards, Perrault, Hauge.

"Jaekc, Nording, Pihl, Petersen, Douglas, and Kunschak are more boys who will also be playing," the coach remarked. "They're all good."

PLC Welcomes . . .

GLENN NEAL

Back on the campus is Glenn Neal, after serving with the Army Air Forces for 33 months. Glenn received his training as a B-17 pilot at Western Flying Training Command. As an overseas pilot he was attached to the 8th Air Force operating out of the European Theatre. He flew 28 missions in a B-17, earning the Air Medal and 3 oak leaf clusters and 2 Stars before returning to the States in May, 1945.

Glenn attended PLC in the fall of '42 at which time he transferred from the State Teacher's College at Dickenson, North Dakota.

Carl J. Nelson - FURRIER (St. Helen's Fur Shop)
Manufacturer of Fine Furs
734 St. Helen's Ave. (Med Arts Bldg.) BRowdway 2811

Mrs. Frisbies Bakery
For GOOD Bakery Products
710 So. 38th St. Phone GA. 7591

MEMORIES OF MOUNT RAINIER

By Ardys Bredvold

Snowflakes falling everywhere
Snowballs flying here and there.
Buses, baked beans, such wet clothes!
Okey, now, just hold that pose!
Sly racoon and docile deer
Thought us humans slightly queer.
Mittens drying by the fire—
Sulphur springs nearby Longmire.
Angel silhouettes in the snow—
Where do all the tunnels go?
Tramping, skiing, crawling, hiking—
Ah, the life of a lucky Viking!
Cold, wet faces, frozen feet—
Oh, for just a little heat!
Snow-capped crags and Paradise Inn—
Criss-crossed skis—he'll never win!
Lots of fun and food galore—
All these memories and much much more.

Lute Lassies

Elimination games were held in W.A.A. volleyball turnouts Tuesday, November 13, and Thursday, November 15, to determine the contestants for the championship game which will be played Tuesday, November 20.

On Tuesday, November 13, team 1 played team 5 and defeated the latter by a score of 45-26. Team 5 lead most of the first half and the mid-game score was 14-14, but team 1 passed them up and continued to chalk up the scores. Louise Tollfield is captain of team 1, and Dorothy Skilbred of team 5.

In order to finish the volleyball playoffs before Thanksgiving vacation, two ten minute games were played on Thursday, November 15. The first clash resulted in a defeat for team 1 at the hands of team 4 by a score of 26-22. Team 4 lead all the way with team 1 threatening only in the last minutes of play.

The second game was played between teams 2 and 3, with the former taking a 40-18 drubbing. Ruth Pflueger is captain of team 4, Helen Peterson, 2, and Daphne Hellman, 3. The game between teams 3 and 4 to decide the champions will be played Tuesday afternoon at 3:45 in the gym.

You smashed a clock and are accused of killing time—just prove that the clock struck first. —The Quay Weekly

LUTE CAGERS BILL 16 GAMES

PLC's schedule in Winko League competition will see the Gladiators play a total of 16 league games this season.

Each school will play every opposing team a total of four times during the regular season, these being divided into a home and home series of two games at each campus.

For brevity, Western Washington College of Education is referred to as Bellingham, Central Washington College of Education as Ellensburg, and Eastern Washington College of Education as Cheney.

Games with non-league teams will also be played. The scheduling of these games is not complete at this time.

The League schedule for PLC:
January 10—Bellingham here
January 11—Bellingham here
January 17—PLC at Bellingham
January 18—PLC at Bellingham
January 25—Ellensburg here
January 26—Ellensburg here
February 1—PLC at Seattle College
February 2—PLC at Seattle College
February 8—Cheney here
February 9—Cheney here
February 22—PLC at Ellensburg
February 23—PLC at Ellensburg
February 25—PLC at Cheney
February 26—PLC at Cheney
March 8—Seattle College here
March 9—Seattle College here

Club Notes

RELIGIOUS ORGANIZATIONS

Mission Society—Mrs. Margaret Eide, wife of the Lutheran Chaplain at Fort Lewis, addressed the last Mission Society meeting Wednesday evening, Nov. 14, in the chapel. Her theme "The Open Door to the World" was based on Rev. 3:20. Mrs. Eide is the former educational secretary of the Luther Leagues of the N.L.C.A. Betty Lou Rieke played a violin solo. The opening devotions were conducted by Stanley Williamson.

LDR—The Treasure Chests are ready to be distributed to LDR members according to Nellie Risa, president. These boxes may be had by asking any of the officers for one. The Chests are to be used for special thank-offerings.

LSA—The LSA Council is sponsoring a drive for the Lutheran World Action to help clothe and feed the impoverished Europeans during the coming winter. Each of the religious societies has been asked to help collect the funds by the first week in December.

Noon Devotions—Stanley Williamson, president of the noon devotional gathering, conducted a Bible quiz at the meeting Thursday, Nov. 15. Carolyn Severide sang a soprano solo, "O Love That Will Not Let Me Go."

SOCIAL CLUBS

Ice-Skating Club — The Ice-Skating Club was organized Tuesday noon, Nov. 6, with the following officers to lead its activities this year: Ruth Pflueger, pres.; Pete Peterson, vice-pres.; Pat Purvis, secretary-treasurer. Marilyn Vanderflute is in charge of the ice-skating party on Jan. 16.

Viking Club—Melvin "Tiny" Osterli presented a short talk on the trip to Mt. Rainier in Norwegian at the Viking Club meeting Tuesday evening, Nov. 13, in the reception room. Afton Hjelm, "The Swedish Nightingale" sang a soprano solo. Refreshments were served at the close of the meeting.

Lundberg Drug
11830 PACIFIC AVE.
PHONE GR. 8519

When you want office supplies
C. FRED. CHRISTENSEN
STATIONER
(Rosenburgs)
913 Pacific Ave. BR. 4629

HELEN DAVIS
Smart Apparel
917 Broadway

BLUE RUSTIC
OPEN FROM
9 A. M. 'til 10 P. M.

BUCKLEY-KING
FUNERAL SERVICE
TACOMA AVENUE AT SOUTH FIRST
BDWY. 2166

Have Your Portrait Made the
Modern Way
MODERNE PORTRAIT STUDIO
PHONE MAIN 5438
9TH and PACIFIC AVENUE TACOMA

GIRLS' SPORTS CLOTHES
MAKE GOOD SCHOOL GARMENTS
SEE THEM AT
WASHINGTON SPORTS SHOP
918 PACIFIC AVENUE

GARFIELD VARIETY STORE
NEW ENAMEL PAINT
326 GARFIELD AVE.

BROOKDALE LUMBER CO.
MOUNTAIN HIGHWAY
GRANITE 8362
BROOKDALE, WASH.

STOP AT
VERNO'S
for Delicious Hamburgers
Hot Dogs
Jumbo Milkshakes
French Fries
at
9th and Pacific

SKATE AT
THE ROLLER BOWL
SOUTH TACOMA WAY

Kampus Kombings

Photogenic?

When Doris Storaasli and Carolyn Severeid were on a recent shopping tour in Tacoma, their picture was taken by the street-corner photographer employed by a down-town drug company. When the girls returned to see the prints, the clerk could not find them. Further investigation showed the photographer had taken the picture with a closed shutter. "That was just a polite way of telling us we broke the camera," laughed Doris.

A Ripping Time

What is slack about slacks? Beverly Swanson, freshman day stude, bent over in gym the other day. Bev has some mending to do.

Action—Camera!

"M.J." Brehon and Mable Thoren seemed to have been the official photographers for our Mt. Rainier trip. They were seen taking both movies and stills of everything from deer and racoons to just scenery and PLC-ites. A sign on "M.J.'s" door last Wednesday night read: "Pictures can be seen after 10 o'clock. Until then, we're studying."

Fill 'Er Up!

Camels can do it. So can Lee Nelson. It's nothing for Lee to sit down to the table and drink 5 or 6 glasses of water just as fast as they'll slide down the hatch. He says his capacity is 15 glasses. Prove it, Lee!

Black-Eyed Susan

Grace Knutzen still sticks to her story that she obtained those beautiful "shiners" by running into a wall. We've heard better.

When It Rains It Pours

"Raining bucketsful" took on a literal meaning Thursday night for freshman Kenneth Storaasli. After inquiring as to the nature of the outside weather, and being reassured that all was dry and serene, Kenny sauntered lazily out of the north exit of Old Main. Came the sound of an opening window, a bucket rattling—and Kenny returned with great promptness to the inside of the building, carrying in his hair and clothes the very wet contents of a water bucket. If he doesn't believe in gravity now, he's certainly "all wet"!

Miss Nielsen Speaks At Thanksgiving Banquet

Amid an array of yellow and brown streamers and candles, the horn of plenty, and good Thanksgiving food, the DPK banquet was held last evening, Tuesday, November 20, in the dining hall. Faculty members and dormitory students were invited to attend.

"The little things we have in life to be thankful for" was the theme of the guest speaker, Miss Anna Marn Nielsen. She was presented by the toastmaster, Walt Kunschak. Dr. H. G. Ronning gave the invocation.

P.L.C.'s mixed quartette, composed of Francelle Schoch, Miriam Hopp, Laverne Linnerson and Albert Kuhn provided musical entertainment by singing "Thanks Be to God" and "Jubilate, Amen." Also on the program were a group of violin solo selections by Alice Stockton, who was accompanied by Ruth Jensen.

Afton Hjelm, general chairman of the banquet, had for her committee chairmen the following girls: Evangeline Ahrendt, program; Lydia Lentz, food; Edna Swartz, decorations.

To prevent ink stains, use a pencil.
The Kuay Weekly

THANKSGIVING

By Anita Roth

A world at war?
Thank God, no more
On distant soil and foreign foam
Sons fight—and die—away from home.

A world at war?
No, yet once more
A guilty world hangs low its head
For those who died, for those who bled.

A world at war?
Yet, men once more
Must fight to keep their brothers freed
A gentle world, a kindly breed.

A world at war?
Forevermore
Will life-blood flow nor battle cease
Till all men know the Prince of Peace.

A world at war?
No, nevermore
If men look up. The victory's won!
Thank God, oh world; thank Christ, His Son.

Campus Deserted

(Continued From Page 1)

into the high gear of classroom routine. But back (and maybe not so far back) in the minds of each and every one of us is the exhilarating thought—just 30 more days til Christmas and home.

Wild West Comes to PLC

Well, podnuhs, it's all over but the shootin', and judging from the remarks overheard around and about, it was well worthwhile sticking around the campus last weekend just to attend that big event of '45—namely, them thar Cactus Kapers (the Sophomore Mixer) which took place Friday night, November 16, in the PLC gym.

The gym, cleverly decorated with a dude-ranch motive, was the scene of lots of good entertainment, including two hilarious melodramas, the girls' trio and the boys' quartette, the song fest, folk dancing with everyone participating, and the tall tales contest, in which Leta Metzger won the prize.

Highlights of the Kapers included the flute solos by Louise Lunde, Arne Aakre's vocal and guitar solos, violin solos by Betty Lou Rieke, and the "personal appearance" of Big Chiefs Ronning and Ranson!

Hats off to Rumohr Gulhaugen and her committees for a job well done.

Two girls were overheard on the Minneapolis bus Sunday night.

"Whatcher favorite readin'?"
"Popeye, Superman, and Flash Gordon."

"Howdya like O. Henry?"
"Naw, the nuts get in my teeth."
—The Gustavian Weekly

BERGLAND HARDWARE CO.

9648 PACIFIC

GR 8780

ANDERSON

FAR WEST GROCERY
PARKLAND, WASH. GR 8560
SCHOOL SUPPLIES and
HOME REMEDIES

C. O. Lynn Co.

MORTUARY Phone
717 TACOMA MAln
AVE. 7745

Madsoe's Groceries

PARKLAND CENTER
DRESS SHOP

Jetland & Palagruti

928 Pacific Avenue
Tacoma 2, Washington

Chapel Quotes

If Martin Luther were here today we would find not only a man who was in touch with everything going on about him, but in touch with everything from the standpoint of eternity. There are many men today who know what is going on about them, but very few who know what is going on from the viewpoint of eternity."

Pastor C. Rydell
First Lutheran Church, Tacoma

"Prayer has more potential power than anything in life. It is the very essence of our faith in God. It can solve every problem we have."

Laverne Linnerson,
Soph., Lib. Arts

BOOKS FOR ANY
OCCASION
Sharman Bookstore
934 Pacific Avenue
Open Evenings till 9:00 p. m.

OAKES

APPAREL

921 Broadway Tacoma

COLLEGE HAIRCUTS
PARKLAND BARBER
C. R. MARSH

QUALITY KNITTING CO.

934 COMMERCE

Look to the Mooring Mast for
P L C News . . .
but

Reach For The

PRAIRIE-POINTER

when you want to know what's
the latest in Community
activities

Published every Thursday for
the Midland, Parkland, Brook-
dale and Spanaway Communi-
ties.

\$2.00 per year.

Beard Printing Co.

Publishers
Phone GRanite 8436
Office: Basement P L C Chapel

Norfolk Jackets

The Latest Thing in Sports Attire

Suitable for Games and School

- PLAIN AND PLAID COLORS
- VARIOUS SHADES
- WITH A FULL BELT

\$17.50

COME AND SEE THEM AT

Lundquist-Lilly

Rust Bldg.

Tacoma

RADAIR

DRAMATIC SCHOOL OF THE AIR

Invites You to Listen To
"THE FIRST THANKSGIVING"
A Radio Program Featuring Students From
Tacoma's Public and Private Schools
TONIGHT, THANKSGIVING EVE, K'TBI, 6:30 TO 7:00
Enroll Now for Radair Productions

Dramatic Radio School of Tacoma
Phone BR 4588 223 P. S. Bank Bldg.