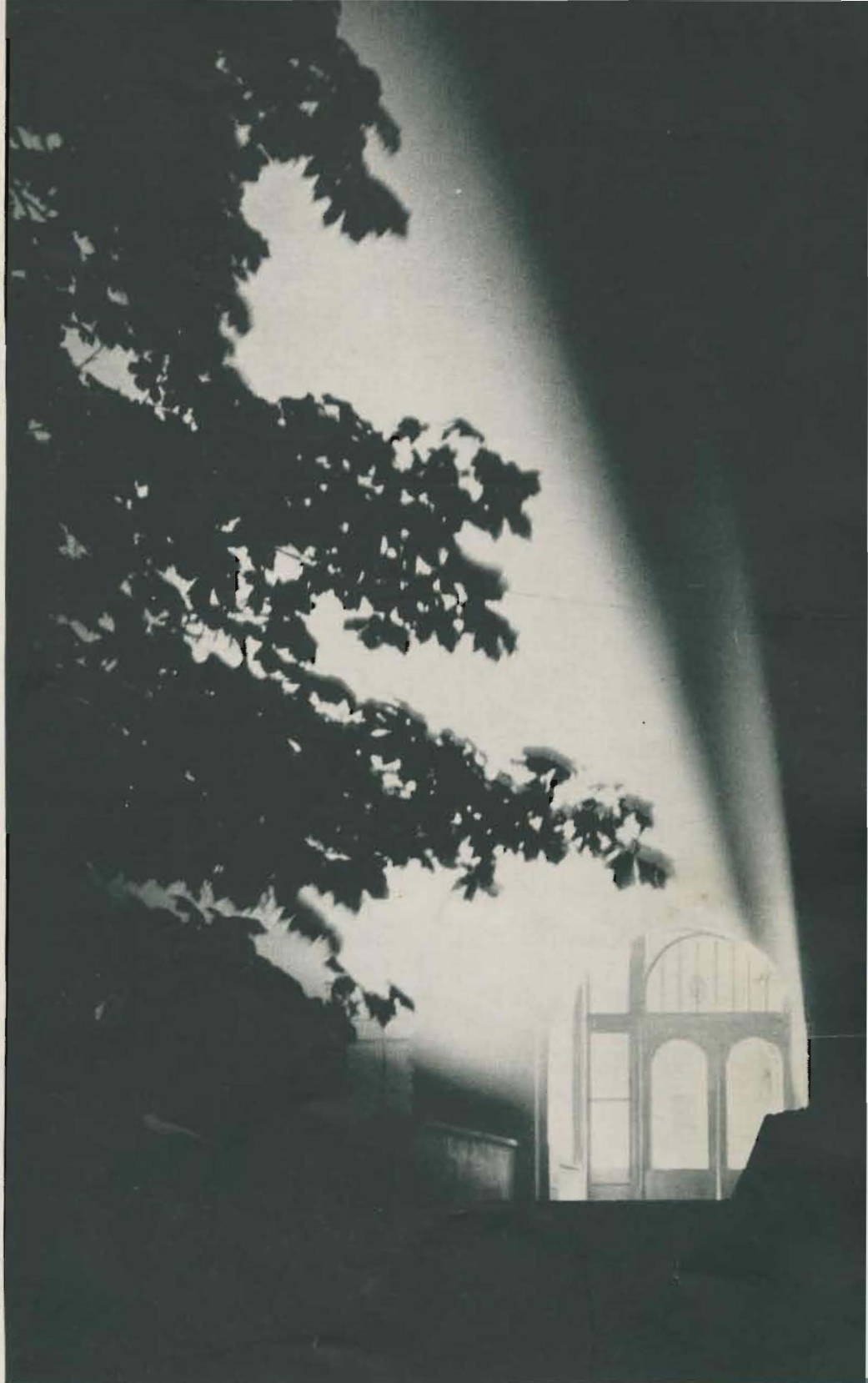




“For
God
and
Country”



PACIFIC LUTHERAN COLLEGE

PARKLAND (TACOMA) WASHINGTON

COMPLIMENTS OF

Tumwater Lumber Mills Co., Inc.

OLYMPIA, WASHINGTON

TELEPHONE MAIN 7745

The Lynn Mortuary

717-719 TACOMA AVE.
TACOMA WASH.

MEDOSWEET *kreamilk*

HOMOGENIZED
FOR HEALTH—
THERE'S CREAM
IN EVERY DROP!

medosweet dairies, inc.—tacoma
Phone BRoadway 1171



ROMAN MEAL

is the delicious whole grain food, rich in natural vitamins, which may be used in all kinds of home baking, such as muffins, breads, cookies, cakes and puddings. It is a stand-by for breakfast porridge.

for sale at
all
grocers





**“BUILDING
TO HELP
KEEP
AMERICA
CHRISTIAN”**



Pacific Lutheran College

PARKLAND, WASHINGTON

PIONEER IN CHRISTIAN EDUCATION

IN THE PACIFIC NORTHWEST

*Celebrates Fifty Years of Service
to Church and State*

1894 -- 1944

PACIFIC LUTHERAN UNIVERSITY FACULTY AND TRUSTEES, 1894



Top row: Rev. E. Ballestad, T. C. Satra, Rev. T. Larsen, Rev. N. Christensen, Rev. B. Harstad. Middle row: Rev. Carlo A. Sperati, Prof. W. Shanon. Bottom row: Meyer Brandvig, Mrs. Carlo A. Sperati, Sophie Peterson.

Five Fundamentals

AND A WORD OF APPRECIATION

Two things seem properly to be required of the undersigned in connection with the publication of this Golden Jubilee Yearbook: to state in fundamental terms what Pacific Lutheran College is seeking to accomplish, and officially to thank those who helped to get this beginning of the College's Golden Jubilee Campaign under way.

Over the College gate there hangs a sign, painted in the College colors, ebony and gold. To those approaching the College from the outside the sign says PACIFIC LUTHERAN COLLEGE; to those inside the College gate it says BUILD FOR CHARACTER; which is exactly what Pacific Lutheran College tries to do. Five fundamental principles underlie the successful operation of the process. The College must realistically accept the racial, social, and family background of each student and sympathetically build upon the foundation that actually exists. The College must respect the conscience of the individual student and be satisfied with progress rather than expect perfection. The College must be faithful to the Christian concept of absolute truth and insist that the student place his conscience under the influence of the Word of God. The personnel of the College must exemplify the friendliness, the kindness, and the humble courtesies which are born of Christian love. The administrative officers of the College must invite the cooperation of the students and offer real opportunity for the exercise of initiative and the acceptance of responsibility; and each must trust the other. To build for character in this way from generation to



PRESIDENT TINGELSTAD

generation is what Pacific Lutheran College is sincerely seeking to accomplish in human lives.

The College plans to celebrate its golden anniversary in 1944. Already in 1936 the preparation for this event began with Tacoma's generous campaign for the \$100,000 Pacific Lutheran College Library Building. Now comes the next step, the \$150,000 effort of the legal owners of the College on the Pacific Coast. Technical obstacles delayed the effort a year or more; by this fall time was of the essence, initial funds were lacking, intensive short-cut solicitation of business friends seemed the best way in which to get started, hence this Golden Jubilee Yearbook. Pacific Lutheran College is deeply and sincerely grateful for the assistance herein made manifest. The College earnestly hopes to merit continued confidence and good will, and to find and fill its place in loyal service to God and country.

O. A. TINGELSTAD.

EXECUTIVE OFFICE



CITY OF TACOMA
WASHINGTON

HARRY P. CAIN
MAYOR

Sept. 25, 1941

Rev. Mikkel Lono
Vice President
Pacific Lutheran College
Parkland, Washington

My dear Dr. Lono:

In the recent past we spent a most pleasant and thought-provoking half hour in discussing those expansion plans which you and your associates of Pacific Lutheran College have in mind, and in furtherance of that conversation I feel impelled to officially and personally encourage your every endeavor.

For fifty years your College by example and through influence has demanded, deserved and received the respect and admiration of Tacoma and Pierce County. This region has been proud of your undergraduates and of that success which has actually pursued most of your graduates. Those who are possessed of your degrees have become stable and well balanced adult citizens and in days so uncertain and confused no finer compliment could be attempted.

Your faculty has been concerned solely with service, but their reward is obvious because their products invariably turn out to be real men and women. Their facilities have not always been adequate and, even though it's saying a great deal, their field for service and stimulation might be broadened if your expansion dreams come true.

If only from a selfish point of view all of us should help and assist you, for the world of tomorrow will be fashioned and governed by those who are being educated and trained today. You have done so much with so little; if everybody gives a little more you will give to us in greater numbers those young people who will add to the coming happiness, stamina and prosperity of our state and nation. May your work be completely successful.

With kind personal regards, I remain

Most cordially yours,

HARRY P. CAIN,
Mayor.

hpc-tn

"THE ELECTRIC CITY"

PACIFIC LUTHERAN COLLEGE SERVES HER COUNTRY

500 Young Americans Are Educated Yearly in a Christian Environment

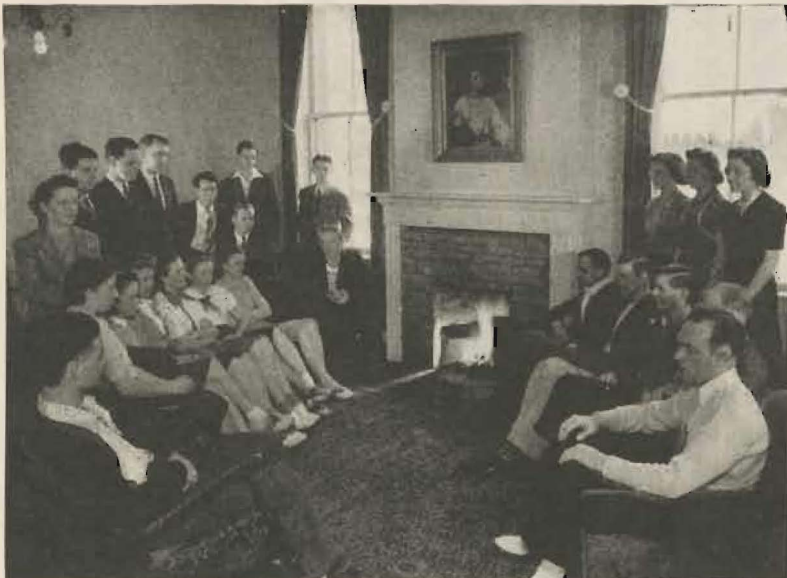
- COLLEGE OF EDUCATION
- LIBERAL ARTS
- PRE-NURSING
- AERONAUTICS
- SUMMER SESSION
- EXTENSION COURSES
- SENIOR HIGH SCHOOL

Accredited by

The Washington State Department of Education

The University of Washington

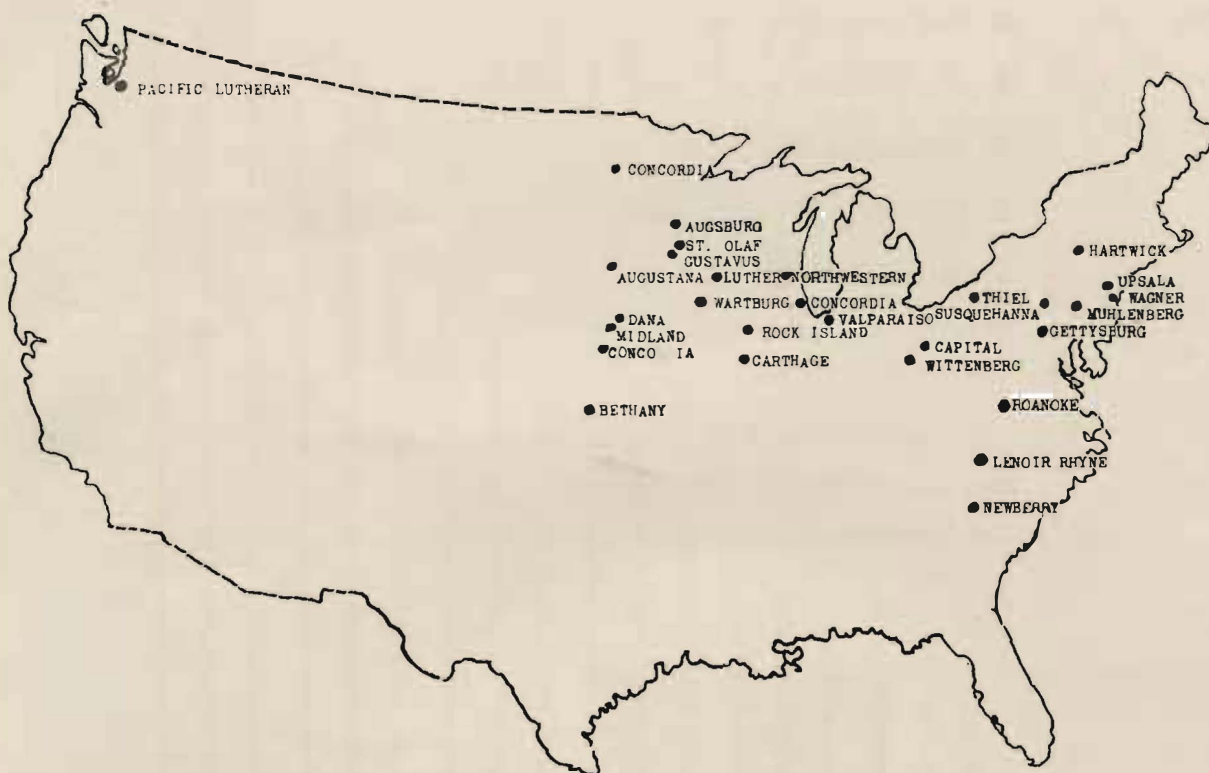
The Northwest Association of Secondary and Higher Schools



A FIRESIDE
GROUP TALKS
OF THINGS
WORTH WHILE

Alone in a Vast Field

**PACIFIC LUTHERAN COLLEGE
IS THE
ONLY LUTHERAN SENIOR COLLEGE
ON THE ENTIRE PACIFIC COAST**



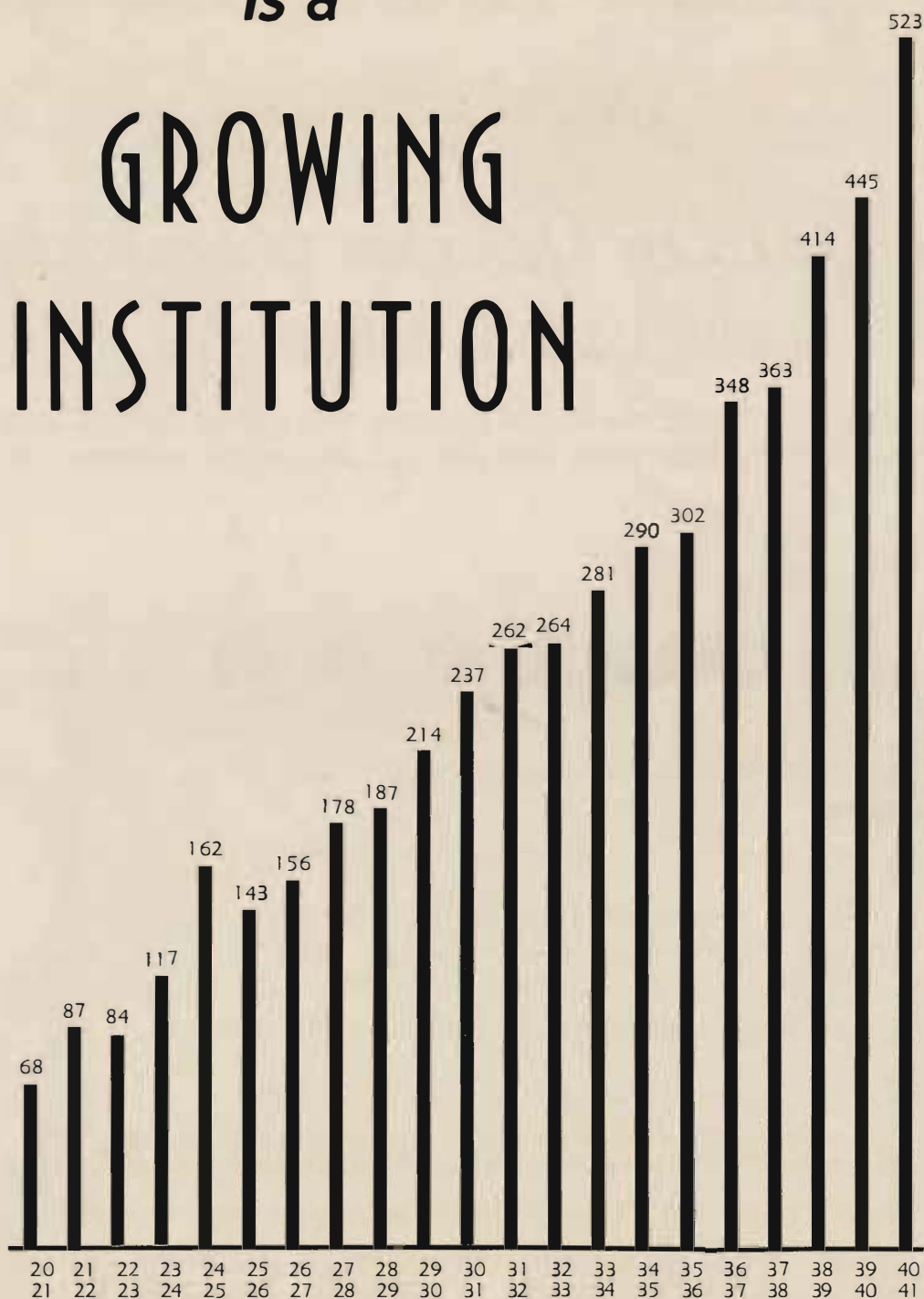
THE SENIOR LUTHERAN COLLEGES OF THE UNITED STATES

**AS THE POPULATION DRIFTS WESTWARD PACIFIC
LUTHERAN COLLEGE'S UNIQUE AND STRATEGIC
POSITION BECOMES INCREASINGLY SIGNIFICANT**

Pacific Lutheran College

is a

GROWING INSTITUTION



STUDENTS SERVED PER YEAR 1920-1941

P.L.C. Continues to Look Forward ON FOUNDERS DAY, OCTOBER 14, 1944

Pacific Lutheran College Will Celebrate Her

Fiftieth Anniversary

THIS CELEBRATION IS TO BE PRECEDED BY

"The Golden Jubilee Campaign"

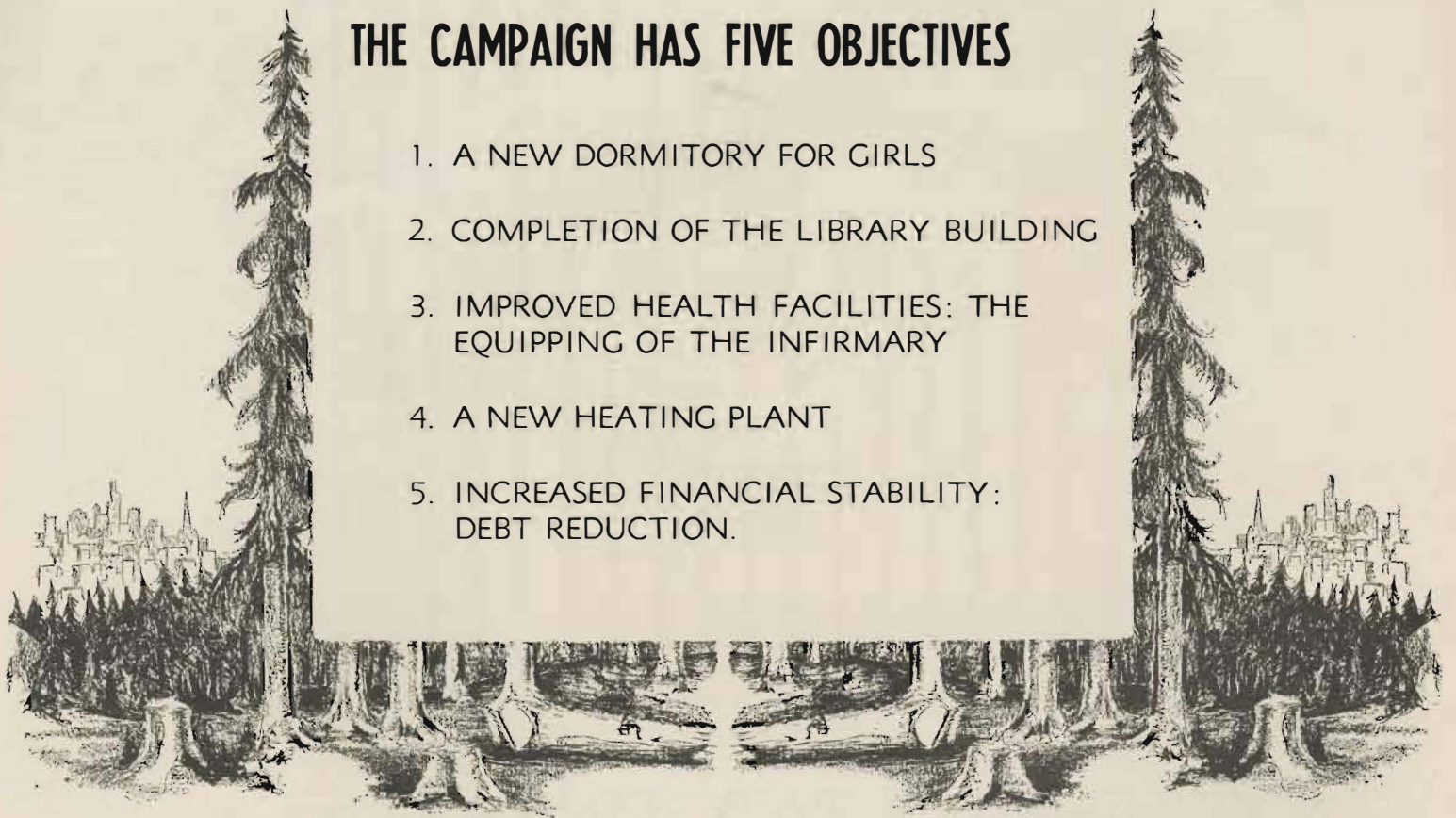
TO RAISE \$150,000 BY PENTECOST, 1942

THE "LARGE GIFTS" SOLICITATION PRECEDES THE GENERAL CANVASS OF
LUTHERAN CONGREGATIONS WHICH BEGINS AFTER EASTER, 1942.



THE CAMPAIGN HAS FIVE OBJECTIVES

1. A NEW DORMITORY FOR GIRLS
2. COMPLETION OF THE LIBRARY BUILDING
3. IMPROVED HEALTH FACILITIES: THE EQUIPPING OF THE INFIRMARY
4. A NEW HEATING PLANT
5. INCREASED FINANCIAL STABILITY: DEBT REDUCTION.



Preparations Are Now Being Made to Celebrate the *Fiftieth Anniversary*



REV. MIKKEL LONO

Rev. Mikkel Lono has been chosen to direct the Golden Jubilee Campaign. He is a member of the staff at P. L. C., in charge of field service, and is well qualified for this difficult task. He knows the constituency of the school and he knows the needs.

Read his message on page 33.

A Campaign Committee headed by Dr. O. A. Tingelstad assists Reverend Lono. The members of this Committee, in addition to the President and Director, are:



C. S. FYNBOE



H. G. RONNING



E. TINGELSTAD

There is also an Intersynodical Committee known as "the Steering Committee" elected to attend to the intersynodical aspects of the Campaign. At present the Campaign is limited to the congregations of the Norwegian Lutheran Church of America. The members of the Steering Committee are investigating the possibilities of enlisting the assistance of the American Lutheran Church and the Augustana Synod.

Compliments of
GENERAL MILLS, INC.

5446 South Washington

Compliments of
CRANE CO.

1209 A Street

Compliments of
**BALFOUR GUTHRIE &
CO., LTD.**

Dock No. 2

Compliments of
GRAHAM BLUE PRINT CO.

Tacoma Building

Compliments of
SLIPP GROCERY

2702½ No. 21st

Compliments of
**PUGET SOUND METAL
WORKS**

1125 St. Paul Street

Compliments of
LINDEMAN DRUGS

Division and North K

Compliments of
**IDEAL MACHINE &
WELDING WORKS**

2609 South Tacoma Way

Compliments of
LINCOLN PHARMACY

701 South 38th

Compliments of
AVENUE HOTEL

1209½ Pacific

Compliments of
**TACOMA PLUMBING
SUPPLY CO.**

315 South 23rd Street

Compliments of
**PACIFIC MONUMENTAL
& ART TILE CO.**

2912 South M Street

Compliments of
DARLING'S DRUG STORE

24 North Tacoma Avenue

Compliments of
**BARTEL'S GROCERY &
MEAT MARKET**

1031 North Tacoma Avenue

Compliments of
CRYSTAL CREAMERY

Crystal Palace Public Market

Compliments of
**EASTERN OUTFITTING
COMPANY**

913 Broadway

Compliments of
HOBART MFG. CO.

1320 A Street

Compliments of
FOX JEWELRY MFG. CO.

931½ Broadway

Compliments of
**WASHINGTON
BELTING & RUBBER CO.**

1010 A

Compliments of
**PLYWOOD SALES & BOX
COMPANY**

2919 South Alaska Way

Compliments of
**LUNDBERG CONCRETE
PIPE CO.**

1120 South Cushman

Compliments of
**STRONG & M^{AC}DONALD
INC.**

1011 East F Street

Compliments of
**BEVINGTON'S
TRIPLE XXX BARREL**

924 Puyallup

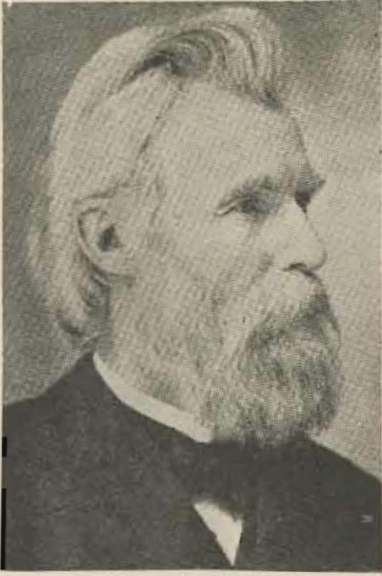
Compliments of
**PACIFIC MILLWORK
CO., INC.**

30th and Sprague

ROLLAND R. LUTZ

762 BROADWAY

These Men Have Made History at P.L.C.



REV. B. HARSTAD
First President 1894-95
and 1897-98



REV. O. GROENBERG
Second President 1895-97



PROF. N. J. HONG
Third President 1898-1917



PROF. J. U. XAVIER
Acting President
1920-1921



REV. O. J. ORDAL
Fifth President 1921-28



DR. O. A. TINGELSTAD
Sixth President 1928-

TACOMA LISTINGS

BORELL MOTORS

Willys Americar, 2052 Sixth Avenue

OTTO The Tailor & Cleaner

Garland 9882, Otto Kueffer, Prop.
713 So. 38th Street, Tacoma, Wash.

HAROLD E. DAHL CO.

Office Equipment and Supplies
1015 Pacific Avenue, MA 6161

C. E. OKESON

2106 South C

TACOMA PUMP CO.

2310 Pacific

ART'S GLASS CO.

816 S. Tacoma Ave.

INTERSTATE FREIGHT LINES

523 Puyallup

FRISBEE BAKERY

710 So. 38th

DUN & BRADSTREET INC.

Puget Sound Bank Building

PITTSBURGH PAINT STORE

1130 Broadway

SANITARY INFANT DAIRY

RFD 1, Puyallup

WATKINSON BROS.

Edgewood

AMERICAN LK. AUTO CAMP

American Lake

W. C. NIEMEYER

Tacoma Building

WINNIE'S BEAUTY SALON

3507 S. 56th, 905 Pacific

FOGEL'S STORE

Mt. Road

WHITWORTH FUEL CO.

2513 N. Proctor

STACY-YOUNG MOTOR CO.

5032 So. Tacoma Way

BOTTCHER'S CANDY SERVICE

1921 Commerce

WESTERN ORNAMENTAL IRON, INC.

701 East D

L. OTTO & SONS MEAT MKT.

323 E. 26th

RESTMORE MATTRESS & FURNITURE CO.

152 Broadway

POINT DEFIANCE RIDING ACADEMY

Point Defiance Park

TACOMA SHADE CO.

1315 S. 23rd

72nd ST. CLEANERS

7045 Pacific

LINCOLN REALTY CO.

717 S. 38th

BELL FUEL CO.

1312 S. Sprague

NELSON SERVICE STATION

9602 Pacific Ave.

BROADWAY BOWLING

739 Broadway

WALKER BURDETT SHELL SERVICE

S. 13th and Yakima

VISELL CO.

909 Pacific

W. J. PINARD CO.

2940 South M

SCHIBIG LAKEVIEW DAIRY

Lakeview

LYLE F. HELANDER

Gilmore Super Service
Division and South K

IRVING THOMAS

Rust Building

ARTCRAFT ROOFING CO.

Tacoma Seattle Hiway

TRYON'S DAHLIA GARDENS

Steilacoom

MIDLAND NURSERY

Lincoln Avenue

CARLESS O. BROWN

5243 1/2 S. Tacoma Way

DORETTE CANDY FACTORY

8631 So. Tacoma Way

Compliments of **SOUTH TACOMA UNDERTAKING CO.**

5036 So. Tacoma Way

Compliments of **EPELAND MOTORS**

5629 S. Tacoma Way

Compliments of **FRENCH DRUG STORE**

4638 S. Yakima

SOUTH SIDE TIRE & BATTERY CO.

B. O. Alstad, 5642 S. Tacoma

IDEAL SHEET METAL WORKS

1315 Tacoma Avenue

ERNEST DOLGE

Hylebos Waterway

EASTMAN KODAK STORES, INC.

910 Broadway

THOMPSON SERVICE STATION

2724 N. Proctor

ANDERS FLORIST'S

255 S. 11th St.

CRYSTALIKE PHOTO SERVICE

512 So. 9th

BYRON D. SCOTT

Perkins Building

KELLY FURNITURE CO.

5428 S. Tacoma Way

SUPERIOR CLEANERS & DYERS, INC.

1012 Center Street

J. STANLEY SEDEL

Perkins Building

ELIZABETH SHACKLEFORD

Puget Sound Bank Building

WASHINGTON GARAGE

908 Court C

FISHER DAHL NUT PRODUCTS

2414 East F

BROOKDALE GOLF COURSE

Brookdale

GREEN ACRES SERVICE STATION

Orchard Hill

TACOMA GLASS CO.

1526 Commerce

Compliments of **C. J. QUILL**

PETERSON'S GARAGE

Parkland

FUJI TEN CENT STORES

1310 Broadway

TSUNGANI PISTON CO.

625 E. 11th

ED HAUGEN

Gilmore Dealer
5043 N. Pearl

JOS. JACKO PIONEER GROC.

1304 South 23rd

BET-R-WAY CLEANERS

5223 So. Tacoma Way

FLOYDS SUPER SERVICE

Midland

FEIX SHEET METAL & BLOWER CO.

110 S. 24th

BOWMAN'S GROCERY

1102 N. Sheridan

PUGET SOUND NURSERY, INC.

9201 Pacific

THE HISTORY OF P. L. C. DATES BACK HALF A CENTURY

PACIFIC LUTHERAN COLLEGE IS A MERGER OF TWO SCHOOLS:

The first, Pacific Lutheran University, was founded in Parkland, Washington, in 1894, with Rev. B. Harstad as president. He was succeeded by Rev. O. Groensberg, and Rev. Groensberg was succeeded by Prof. N. J. Hong.



REV. R. BOGSTAD

The second school, Columbia College, was established in Everett, Washington, in 1909, with Mr. C. B. Runsvold as president. He was succeeded by Rev. Rasmus Bogstad who served until the school was closed, in 1918.

In 1920 these two schools merged, adopting the name PACIFIC LUTHERAN COLLEGE. Rev. J. U. Xavier served as acting president until the fall of 1921 when Rev. Ola J. Ordal assumed the presidency.

August 1, 1928 Dr. O. A. Tingelstad became the president of P. L. C. and the forward-looking program of his predecessors has been carried forward and expanded under his leadership until Pacific Lutheran College ranks today as a fully accredited and highly respected institution.

PACIFIC LUTHERAN COLLEGE IS HEIR TO SIX SCHOOLS

Pacific Lutheran College has inherited the responsibilities and opportunities of six early Lutheran schools which were forced by circumstances to close.

1. St. Mark's Academy, Tacoma, of the Joint Synod of Ohio, 1889-93.
2. Bethany High School, Poulsbo, of the Norwegian Lutheran Free Church, 1894-96.
3. Bethany College, Everett, of the Lutheran Free Church, 1904-17.
4. Pacific Lutheran Seminary, Olympia, of the Joint Synod of Ohio, 1907-14.
5. Coeur d'Alene College, Coeur d'Alene, Idaho, of the Augustana Synod, 1897-17.
6. Spokane College, Spokane, Washington, of the United Norwegian Lutheran Church, 1907-29.

AS A CONSOLIDATION OF TWO SCHOOLS AND THE HEIR OF SIX OTHERS
PACIFIC LUTHERAN COLLEGE SURVIVES TO CARRY FORWARD THEIR WORK.

Compliments of
PAUL D. SHAFER

c/o Washington Co-Op
Milwaukee Waterway

Compliments of
RISER DRUG CO.

2156 South K

Compliments of
STATE FARMS INS. CO.

Washington Building

Compliments of
FIFE BUILDERS SUPPLY

Fife

Compliments of
TACOMA BOX CO.

923 East 26th

Compliments of
**PACIFIC MUTUAL FUEL
CO.**

401 East 11th

Compliments of
**MARINE VIEW BOAT
BUILDING CO.**

Marine View Drive

Compliments of
P. C. PAULSON CO.

Broadway Food Stores
1306 Broadway

Compliments of
NATIONAL LEAD CO.

1013 A

Compliments of
DON'S PAGODA

3804 South Tacoma Way

Compliments of
**RESTMORE MATTRESS &
FURNITURE CO.**

152 Broadway

Compliments of
**BERGER MEATS and
GROCERIES**

8401 Pacific

Compliments of
PESSEMIER BROS.

915 Broadway

Compliments of
ST. HELENS FUR SHOP

734 St. Helens

Compliments of
CROWN DRUG CO.

1102 Pacific Avenue

Compliments of
CARL H. SKOOG

Puget Sound Bank Building

Compliments of
**PACIFIC AVENUE
LUMBER CO.**

8347 Pacific Avenue

Compliments of
CARL GEBBERS

746 Market

Compliments of
MANNING COFFEE SHOP

11th and Commerce

Compliments of
LANG HARDWARE CO.

5405 South Tacoma Way

Compliments of
**BRATRUD INSURANCE
AGENCY**

315 Fidelity Bldg.

Compliments of
H. A. BRIGGS CO.

607 Puget Sound Building

Compliments of
HENRY ARNOLD PETERSON

Washington Building

Compliments of
MODEL BAKERY

3802 South Yakima

COMPLIMENTS OF
SVEND NIELSEN
(Confectionery)

MIDLAND

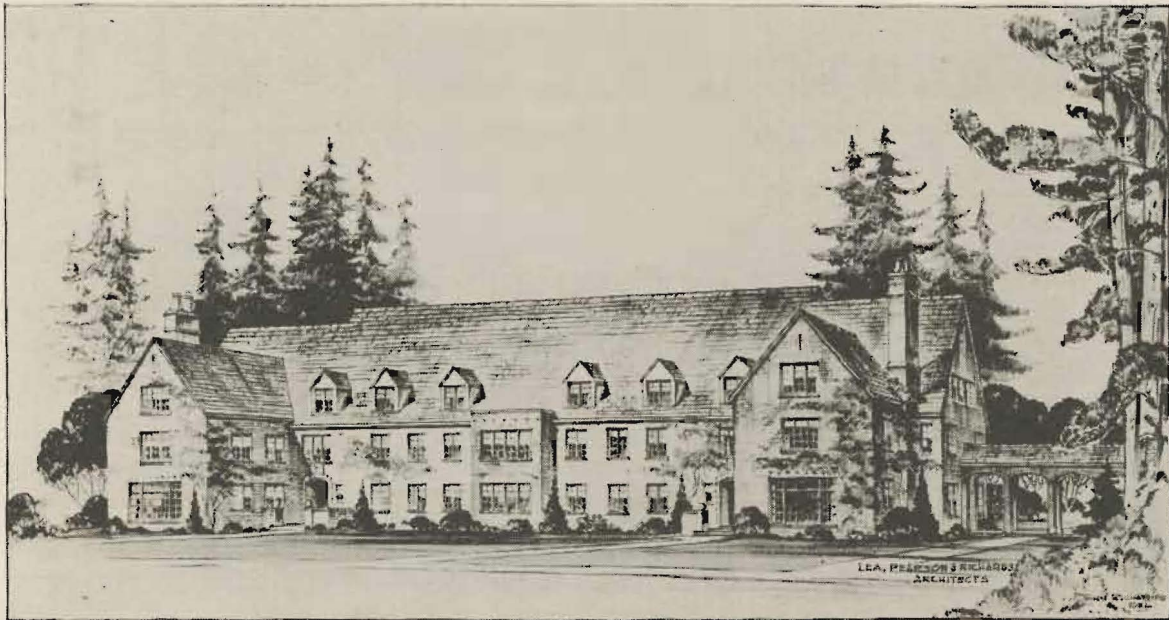
Compliments of
SAM B. STOCKING

Shaffer Terminals

COMPLIMENTS
GIBSON FLOWERS

5001 PACIFIC AVE.

THE WOMEN OF P. L. C. NEED A RESIDENCE HALL



Above is Architect Richards' present conception of what the new girls' dormitory at Pacific Lutheran College should be like. The building of this dormitory is one of the main objectives of the Golden Jubilee Campaign.

THE LIBRARY NEEDS STACKS



This beautiful building which citizens of Tacoma and Pierce County gave Pacific Lutheran College in 1936 needs to be finished by equipping the stack room with steel shelving. The completion of the building is one of the Golden Jubilee Campaign objectives.

AMERICAN SAVINGS & LOAN ASSN.

115 South 11th

SEATTLE-TACOMA DISTRIBUTING CO.

2312 EAST E

TOLEDO SCALE CO.

704 PACIFIC

ROBERT T. KNIGHT

WASHINGTON BUILDING

COMPLIMENTS OF

TOMMY MALLON

5615 SOUTH TACOMA

COMPLIMENTS OF

**PIPER'S
FUNERAL
HOME**

5436 PUGET SOUND

Compliments of

A. E. BLAIR

Tacoma Building

Compliments of

MILD EX CO.

"A Northwest Favorite"

1530 Center Street

Compliments of

**JOHNSON PAINT & W. P.
COMPANY**

1142 Broadway Ph. BRdwy. 3242
Tacoma's Own Paint Store

Compliments of

**FURNITURE & UPHOLSTERY
COMPANY**

4540 South M GARland 4935

Compliments of

**ANDERSON FIR FINISH
COMPANY**

1612 Center

Compliments of

SHAW SUPPLY CO.

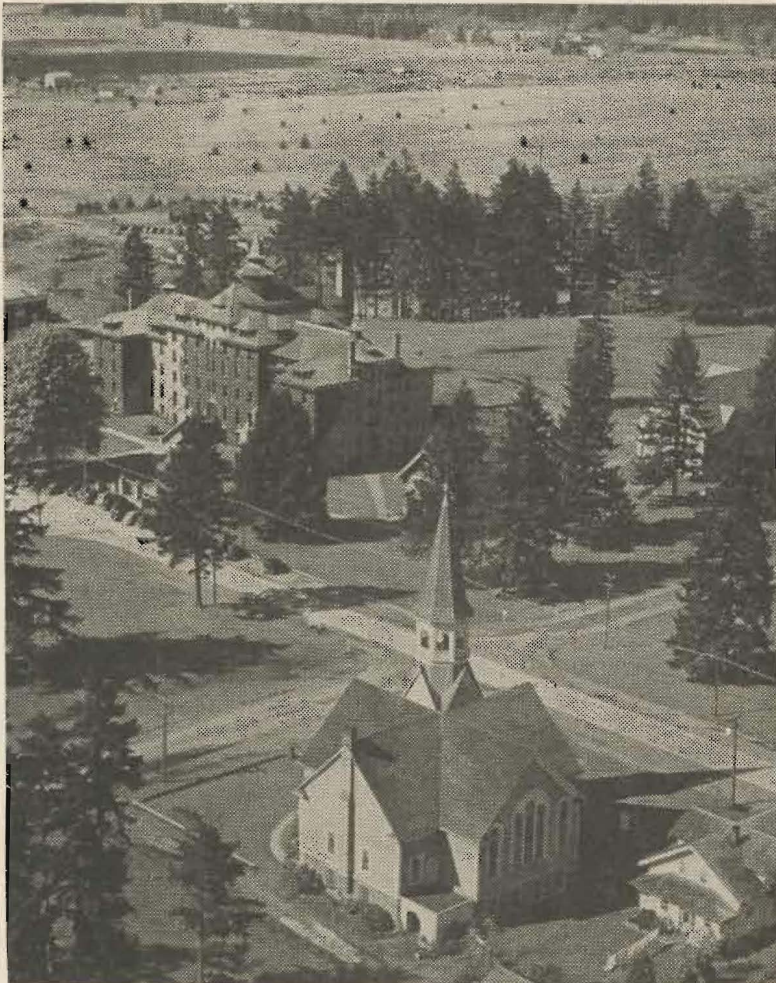
755 Market

DRS. NELSEN & DOUGLAS

Medical Arts Building

THE RECENTLY
ACQUIRED
INFIRMARY BUILDING

The equipping of this building is one of the objectives of the Golden Jubilee Campaign.



AIR VIEW OF THE CAMPUS
with Trinity Church in the foreground and the
College golf course in the background.



PRESIDENT'S RESIDENCE

TACOMA LISTINGS

LUNDQUIST TEXACO SERVICE STATION

3024 6th Avenue

R. RESCH

317 South 9th

BAYER'S GROCERY

1202 North Oakes

JOHNSON BRUSH CO.

722 Pacific

MODEL GROCERY

4602 Pacific Avenue

STUART H. ELLIOTT

Perkins Building

PUGET SOUND CLEANERS & DYERS

608 North 1st Street

QUALITY KNITTING CO.

934 Commerce

J. FRANK LIBY CO.

Perkins Building

COLUMBIA SAUSAGE CO.

2304 Jefferson

DAVIS & LOVE

Tailors & Cleaners
Provident Building

EQUITABLE LIFE INS. CO.

Orville Cass

SAM KLEINER

707 South Tacoma Avenue

FLOYD GIBBONS

Perkins Building

H. S. PAT CASTOR

2715 South Tacoma Way

HAROLD I. SCOTT

Rust Building

SWEDISH MASSAGE

3820 North 26th Street

GEORGE THOMAS

1516 South 11th

SMELTER BARBER SHOP

5305 North 51st

WOLFORD'S SHELL SERVICE STATION

1720 6th Avenue

RICHMOND FUEL CO.

1315 South 38th

TACOMA RUBBER STAMP CO.

933 Commerce

RIALTO CANDY SHOP

312 South 9th

PAUL SCHLEGEL & SON

Fife

NEAL'S RADIO SALES CO.

953 Market

DRESS & GIFT SHOP

4845 Pacific

FRANKLIN FUEL CO.

3902 South 12th

E. C. GEMBERLING

Insurance and Real Estate
511 Washington Building

PAYLESS DRUG STORE

930 Broadway

ANDERSEN FUEL & TRANSFER CO.

1549 Dock Street

CARLTON HOTEL

1553 Jefferson

HESSEY RADIO SERVICE

2305 6th Avenue

G. RUSH FALER & CO.

932 Commerce

LEWIS E. JEKLIN

Providence Building

WHITWORTH GROCERY

3606 McKinley

TACOMA ICE CO.

2601 Holgate

MODEL GROCERY

4602 Pacific Avenue

ARNOLD'S GARAGE

9654 Pacific

LESLIE B. SULGROVE

Puget Sound Building

QUICK SERVICE GROCERY

W. G. Burger, 5045 South Yakima Avenue

JOHN B. CROMWELL JR.

Auto, Life and Fire Insurance
Rust Building

HAMILTON STUDIO

Reasonable Prices
1147 Broadway, MAin 6870

J. R. THOMPSON, M. D.

Physician and Surgeon

AVENUE TIRE SHOP

Largest Used Tire Stock in Town
2311 Pacific Avenue, M. Fleischmann, Prop.

FONAAS DRY GOODS

South 56th and M Streets, GARland 4962

STEWART HEIGHTS FOOD MARKET

Groceries, Meats, Vegetables and Fruits
5512 Pacific Avenue, GA 5180

LAKE CLEANERS

Pressing While You Wait
Prompt Pickup and Delivery
Corner 10th and Pacific, MAin 2433

THE GRAY GOOSE INN

4 Miles South of South Tacoma on Hi-way 99
Phone LAKewood 3588, Tacoma, Wash.

NEAL DRUG

8404 South Tacoma Way, Across from Richfield Tower. Phone GARland 4579

ALMA AYRES, INC.

Coats, Suits and Dress for All Occasions
760 Broadway

PROSPECT MEAT MARKET

2604 6th Avenue

F. R. ZAUGG

4114 South Washington

PARK HAND LAUNDRY

3508 South 54th

DR. ERWIN PETERSON

Fidelity Building

THADEN'S UPHOLSTERY

1010 Center

W. B. HAMILTON

General Agent, Western Life Insurance Co.
Pacific Savings Building, Tacoma, Wash.

STOP & SHOP

Home of Good Eats
Corner South 38th and G

TACOMA FRENCH BAKERY

French Bread, Bread Sticks, French Rolls
Phone MA 4870, 1205 Center St., Tacoma

A. G. PAULSON

Jeweler and Appliances, Sales and Repairs
1016 South 11th Street, MAin 1321

DRS. FREDERICK

Ray T. Frederick, Ida S. Frederick
Drugless Physicians, Chiropractic, Sanipractic
514 Fidelity Building, Phone MAin 3501
609 South 38th Street, GARland 8414

FREEMAN REALTY CO.

Gravelly Lk. Drive Opposite Lakewood Center
LAKewood 3553

LIGHT HOUSE ELECTRIC CO.

Jim Irwin, BRoadway 4014
1113 South Kay Street, Tacoma, Wash.

HELEN PETERSON

914½ Broadway

BUNGE SERVICE STATION

1624 Puyallup

BELLEVUE SANITARIUM

515 South 64th

DR. EDWARD R. ANDERSON

224 North G

CAPPA DE LUXE CUSTOM UPHOLSTERY CO.

1113 South 11th

WILLIAM L. McCORMICK

Tacoma Building



P.L.C. STUDENTS

Believe in Their School

FOSS LAUNCH & TUG CO.

400 DOCK ST.

BERG & SONS PRODUCTS CO.

1306 COMMERCE

ROBERTS BROTHERS FOOD STORE

DIVISION & NORTH I

JOHN B. MURPHY

PLAYMOR BOWLING ALLEY

1208 S. K

THEODORE GAFFNEY MORTUARY

BRoadway 3414
Yakima at Tenth, Tacoma, Washington

LEA-PEARSON & RICHARDS

C. W. Lea, Jr.

TACOMA BLDG.

SHOP BURNETT BROS.

for World Famous Watches—Elgin,
Hamilton, Bulova, Longines, Waltham,
Gruen

Pay \$1 Weekly

BURNETT BROS.

Tacoma's Leading Jewelers
924 Broadway

COMPLIMENTS OF

SEARS, ROEBUCK AND CO.

Store Hours, 9:30 A. M. to 5:30 P. M.
Broadway at 13th, Tacoma, Wash.

OLIVER TAXI Call MAin 2125

Ambulance Service
Bonded and Metered Cars
14th and Pacific Union Drivers

CARROLL G. CARLSON, M. D.

Neurology and Psychiatry
Medical Arts Building
Tacoma, Washington

TACOMA VETERINARY HOSPITAL

DR. L. K. TODD
Route 2, Box 3, Tacoma, Wash.

POOLE'S SEED & IMPLEMENT

1142 Pacific Avenue 1141 Commerce
Tacoma, Washington

EMIL GEHRI PLUMBING COMPANY

Contract and Repair Work
Licensed - Bonded - Certified
2110 North Prospect PR. 3886

NORTHERN FISH PRODUCTS CO.

Fresh and Cured Fish, Oysters, Clams
and Crabs
15th and Dock Streets Tacoma, Wash.

THADEN'S UPHOLSTERY

Custom Built Furniture at No Extra Cost
Restyling Refinishing Mattresses
Center and Jay Street

JENSEN FUEL COMPANY

General Petroleum Burner Oils
5802 South Washington St.
Phones: Office—GARland 3366
Nite—GARland 1944

Geo. B. Guyles Harold N. Mann

J. C. GUYLES & CO.

INSURANCE—SURETY BONDS
Puget Sound Bank Building MAin 3131

FECK CIGAR COMPANY

Wholesalers of
Cigars, Candy, Chewing Gum, Cigarettes
and Tobaccos
1549 Broadway Phone MAin 5747

ALBERT EHRLICH, M. D.

Physician and Surgeon
Office: MA. 2508—Residence: MA. 5495
If No Answer Call BR. 3166
1212 Medical Arts Bldg., Tacoma, Wash.
Office Hours 11 - 1 & 2 - 5

CAMPBELL BOTTLING CO.

3861 Center

J. L. CARMAN JR.

801 EAST 25TH



COACH CLIFFORD OLSON



J. P. PFLUEGER—"BARON" BAROFSKY
Trainer Asst. Coach

P. L. C. Makes Good In Many Sports



SKIING ON MT. RAINIER



A TOMMERVIK PASS COMES HOME



ACTION IN A P.L.C.-C.P.S. CONTEST



TENNIS SQUAD

Compliments of
HOLLYWOOD MOTORS

5030 South Tacoma

Compliments of
BEUTEL BUSINESS COLLEGE

937 1/2 Broadway

Compliments of
TACOMA BOAT BUILDING COMPANY

2142 East D

Compliments of
WOOD & CO.

1517 Commerce

Compliments of
HIGHLAND GOLF COURSE

North 13th and Pearl

Compliments of
LAKWOOD PHARMACY

Lakewood Community Center

Compliments of
WESTERN BOAT BUILDING COMPANY

2505 East 11th

Compliments of
PENN SALT CO.

Tide Flats

Bed Davenos, Davenport & Chairs,
Beautiful Upholstery
Wool Carding, Mattress Renovating,
Spring-Filled Mattresses

EMPIRE FURNITURE MFG. CO.

Quality Made
UPHOLSTERED FURNITURE

H. C. Christenson, Res. P. Rector 4087
MAin 2202, Tacoma

Compliments of
WESTERN MONUMENTAL WORKS

1114 Center

Compliments of
PUGET SOUND MFG. CO.

1123 St. Paul

Compliments of
DILL HOWELL SPORTING GOODS

929 Commerce

Compliments of
T. F. HERREID

111 North Tacoma Ave.

Compliments of
FOWLER GARAGE and SERVICE STATION

2512 Jefferson

Greetings from
FRANK FOX TIRE CO.

314 Puyallup

Greetings from
SERVICE FUEL CO.

3214 North 16th Street

Greetings from
AMERICAN CONCRETE & STEEL PIPE CO.

459 East 15th

BENDER'S
Women's Apparel

Phone BRoadway 4561 1124 Broadway
Tacoma, Washington

FRASIER'S

Frasier's Gifts and Stationery
912 Broadway

Res. 617 North Cedar Street
Res. Phone MAin 6358
DR. CARL W. KRONA
PHYSIOTHERAPY
Suite 331 Provident Bldg., MAin 8873
Tacoma, Washington

Compliments of
TACOMA SECRETARIAL SCHOOL

Medical Arts Bldg.
Lyle Lemley, B.B.A., President

THE HUB

CLOTHIERS

1118 Pacific Avenue Tacoma, Wash.

Compliments of
PAUL I. CUTLER

Your Richfield Dealer
1312 No. 1 Street, Phone MAin 7491
Tacoma, Washington

DR. CHAS. LARSON

Tacoma General Hospital

Dr. Charles Engels

Medical Arts Building

BROADWAY FOOD STORES

8410 South Tacoma Way

F. D. HILL

E. A. DEYO

F. D. HILL & CO.

**INSURANCE
REAL ESTATE
SURETY BONDS**

Rust Building

Tacoma, Wash.



P. L. C.
STUDENTS

*Appreciate
The Beautiful*

MAY FESTIVAL
1941

TACOMA LISTINGS

ELECTRICAL PRODUCTS CONSOLIDATED

742 Pacific

W. G. ATKINSON & CO.

766 Commerce

DENT GLOVE FACTORY

133 Broadway

UNION CLEANERS & DYERS

702 St. Helens

MEADE'S Grocery and Market

602 North K St.

LINCOLN MARKET

3801 South C

EAST END MARKET

3102 Portland

FARLEY'S FLORIST

6th and Anderson

SCHORER AUTO REPAIR SHOP

3730 South G Street

CENTER ST. SERVICE STATION

825 Center Street

ROY P. ARCHER

1901 South K Street

N. H. LARSON (Jewelry)

2703 6th Avenue

HAYDEN-WATSON FLORISTS

256 South 11th

BORNEFELD GROCERY

162 South 43rd

GORDON'S FOOD MARKET

4310 South 66th

ROBERTSON'S SERVICE STATION & GROCERY

5535 McKinley Avenue

BENNETT TYPEWRITER CO.

934 Pacific

BROWN ROOFING and LUMBER CO.

1424 South 11th

SUMMIT TRADING CO.

Summit View

A & D CAFE

5640 South Tacoma Way

WASHINGTON BINDERY

201 North Eye

JOE F. NELSON

931 1/2 Broadway

FRICKELTON GROCERY

755 South 56th

CITY RADIATOR & FENDER WORKS

5618 South Tacoma Way

GENE'S FLYING BOOTS

614 South 38th

V. C. DIETER CO.

205 South 9th

BERGMANN'S GROCERY

Larchmont

GENE'S TEN CENT STORES

5427 South Tacoma Way

BIG SIX SERVICE STATION

3829 6th Avenue

WEST END GROCERY

3001 South 12th

LaVERGNE FERN HILL GARAGE

8060 South Yakima

Z. A. VANE & CO.

5420 South Tacoma Way

STANDARD AUTO WORKS

2324 Jefferson

BERNICE WENNESS BEAUTY SALON

1017 South 11th

ERKER'S CABINET WORKS

1211 South 11th

EMPIRE MARKET

2153 South K Street

BURALLI ATTILIO, GROCERY

2920 East D

BONNELL CONSTRUCTION Co.

760 1/2 Commerce

NICHOLAS VITOS

212 Bankers Trust

ENGLE'S SHURFINE MARKET

2302 South Wilkeson Street

BAIR HARDWARE CO.

Steilacoom

CLARENCE R. POTTER

Harley Davidson Motorcycles
South 19th and Fawcett

BURPEE'S CONFECTIONERY

4325 6th Avenue

CARROLL'S SERVICE (Texaco Station)

Clover Creek

GREEN LANTERN CONFECTIONERY

204 North Kay

COOK'S I.G.A. GROCERY

3403 North Proctor Avenue

CARLSON UPHOLSTERY CO.

504 South 11th

ELECTRIC CONSTRUCTION COMPANY

760 Commerce

McKENZIE GROCERY

Spanaway

TACOMA GRAVEL & SUPPLY

2920 South Sawyer

SOUND GROCERY

4915 North Pearl

HOYT DRUG STORE

South 38th at M

ENGER HARDWARE CO.

5412 South Tacoma Way

BARR KEY & LOCK SERVICE

815 Division Street

HEALY BROTHERS, INC.

718 Fidelity Building

WASHINGTON FLORAL SERVICE

1149 South Tacoma Way

SUNSET MATTRESS CO.

2310 6th Avenue

VICTOR'S MARKET

Brookdale

WOOLEN CLEANERS & DYERS

1205 South K

I. G. YOUNG'S GROCERY

Johnson's Crossing

MODERN AUTO WORKS

1401 A

HOEM'S GROCERY

7001 South Tacoma Way

VIRGIL'S CORNER

Summit Highway

LOLA'S BEAUTY SALON

4843 Pacific

GRIGG'S CUT RATE DRUG CO.

3519 McKinley

23rd ST. PUBLIC MARKET

1102 South 23rd Street

SILVER DOLLAR CAFE

905 Pacific Avenue

TYRRELL'S GROCERY

4419 McKinley

THE FAMOUS "CHOIR OF THE WEST"

(Fall of 1941)



THE CHOIR IS DIRECTED BY GUNNAR J. MALMIN

THE 1940 BAND



ELVIN M. AKRE CONDUCTS THE BAND

Compliments of

ARROW GARAGE

2338 Jefferson

Compliments of

**JOHNSON OLYMPIC
CONFECTIONERY**

1109 South K Street

Compliments of

JOHN N. MARKER CO.

1114 D

Compliments of

**WHITWORTH TRANSFER
STORAGE CO.**

1715 Commerce

Compliments of

**TACOMA MILK PRODUCTS
ASSN.**

2515 South Tacoma Way

Compliments of

WEST COAST CHAIR CO.

702 East 26th

LOUIS J. MUSCEK

Washington Building

Compliments of

**ANDREWS WOMEN'S
APPAREL**

943 Broadway

Compliments of

RICHARD CAMBER

Brookdale Service Station
Brookdale

**LINCOLN SHEET METAL
WORKS**

3736 South G

Compliments of

FRENCH DRUG STORE

436 South Yakima

GREGORY CASKET CO.

2339 Fawcett

Compliments of

MOTORAMP GARAGE

9th and Commerce

Compliments of

COAST HOUSE MATERIALS

17th and Tacoma Ave. South

Compliments of

GUNNAR'S GROCERY

314 South 11th

Compliments of

HARDY PAINT CO.

4540 South Adams

Compliments of

MISS KAREN RYNNING

Medical Arts Building

Compliments of

**NEIGHBORHOOD
SERVICE STATION**

1501 South K Street

Compliments of

**COMMONWEALTH
TITLE INS. CO.**

Rust Building

Compliments of

DICKSON BROS.

1134 Pacific Avenue

Compliments of

**CHAS. A. GREEN,
Optometrist**

254 South 11th

Compliments of

DEMPSEY LUMBER CO.

Compliments of

JOHN T. McCUTCHEON

Puget Sound Bank Building

Compliments of

JOHNSON & LUNDGREN

440 East 25th

Compliments of

**J. H. GALBRAITH
GMC TRUCK CO.**

311 Puyallup

Compliments of

**BUTTON & BUTTON
Veterinarians**

2909 South M

Compliments of

**BUFFELEN LBR. &
MFG. CO.**

Tide Flats

P.L.C. Has Loyal Supporters

Pacific Lutheran College enjoys the loyal support of an exceptionally large number of organizations and individuals.

- THE NORWEGIAN LUTHERAN CHURCH OF AMERICA, a nation-wide organization with headquarters in Minneapolis, grants a yearly subsidy of \$10,000 which is applied to the operating budget.
- THE AMERICAN LUTHERAN CHURCH, with headquarters in Columbus, Ohio, also gives a good-sized annual grant to apply on operation.
- THE LUTHERAN EVANGELICAL AUGUSTANA SYNOD OF AMERICA, whose head office is in Minneapolis, supports Pacific Lutheran with an annual subsidy; and its western-most conference, the COLUMBIA CONFERENCE, grants an additional subsidy.
- THE PACIFIC DISTRICT of the Norwegian Lutheran Church of America, which owns the school and operates it through the instrumentality of the **Pacific Lutheran College Association**, supports P. L. C. through the voluntary gifts which its congregations give, through an annual Roll Call Sunday, through the generosity of many individual church members and congregational organizations, and through furnishing a considerable proportion of the students.
- THE PACIFIC LUTHERAN COLLEGE ALUMNI ASSOCIATION renders support by stimulating the continued interest of its members in their Alma Mater, which interest results in many gifts to the school from individual alumni.
- THE PACIFIC LUTHERAN COLLEGE DORMITORY AUXILIARIES work primarily for interesting friends in the cause of building a new girls' dormitory, and also for making life in the present dormitories more pleasant for the girls. Auxiliary No. 1 is composed of ladies of the faculty, wives of faculty men, and wives of Lutheran pastors of Tacoma and vicinity. Auxiliary No. 2 is a larger organization, composed of women of Parkland, Tacoma and surrounding territory. The first of these auxiliaries contributed a fourth of the purchase price of Auxiliary Hall, the dormitory for senior women, and both organizations have given substantial financial help to the college from time to time.
- THE PACIFIC LUTHERAN COLLEGE DEVELOPMENT ASSOCIATION is P.L.C.'s "Living Endowment," an organization of individuals and groups which voluntarily contribute "at least a dollar, at least once a year." Since 1928 close to eleven thousand different individuals or societies have given at least one contribution, and some have given a large number of contributions. The individuals and societies are scattered all over the United States, and many live in foreign countries. In the past twelve years these friends have given more than ONE HUNDRED THOUSAND DOLLARS, mostly in small gifts, and have done much in other ways to assure the success of Pacific Lutheran College. This "Living Endowment" of proven friends is one of P. L. C.'s greatest assets.

Greetings . . .

FROM TACOMA PROFESSIONAL MEN



| | | |
|-------------------------|---------------------------|----------------------|
| Dr. Eugene W. Hanson | Dr. Einer Peterson | Dr. Sydney McClean |
| Dr. C. P. Balabanoff | Dr. C. E. Frairs | Dr. H. H. Meier |
| Dr. E. L. Bird | Dr. Miles Parrott | Dr. Glenn G. McBride |
| Dr. D. H. Bell | Dr. M. R. Hosie | Dr. Edwin C. Yoder |
| Dr. Horace Whitacre | Dr. A. Giesy | Dr. J. J. McLaughlin |
| Dr. Karl S. Staatz | Dr. H. L. Monzingo | Dr. Edwin L. Carlsen |
| Dr. Archibald W. Howe | Dr. Woodward Niethammer | Dr. Harry B. Allison |
| Dr. Clyde Magill | Dr. A. H. Buis | Dr. R. O. Ball |
| Dr. C. G. Trimble | Dr. Paul Nelsen | Dr. J. W. Rawlings |
| Dr. Wm. C. Paul | Dr. J. W. Gullickson | Dr. Somers R. Sleep |
| Dr. Cyril V. Lundvick | Dr. H. L. Davis | Dr. M. H. Fisher |
| Dr. Chris G. Reynolds | Dr. David H. Johnson | Dr. Frank Plum |
| Dr. Ward B. Van Vechten | Dr. R. Chisholm | Dr. S. A. Ambrose |
| Dr. David B. Cook | Dr. Edgar F. Dodds | Dr. Tom Murphy |
| Dr. Frank Ris Baker | Dr. Carl W. Krona | Dr. Joseph Bell |
| Dr. J. A. Brewill | Dr. A. B. Heaton | Dr. S. E. Light |
| Dr. Andrew Grimsted | Dr. D. M. Dayton | Dr. J. C. Bennett |
| Dr. Cliff Sayre | Dr. A. E. Hillis | Dr. J. G. Coffman |
| Dr. K. W. Wiley | Dr. Frank H. James | Dr. Edwin D. Warren |
| Dr. A. L. Schultz | Dr. W. L. Gregg | Dr. W. Price |
| Dr. C. B. Ritchie | Dr. Fordyce A. H. Johnson | Dr. Cliff Halverson |
| Dr. S. N. Berens | Dr. J. M. Garceau | Dr. Leo J. Hunt |
| Dr. J. C. Bohn | | |

FOUR STAGES MARK P.L.C.'S PHYSICAL EXPANSION IN FIRST HALF CENTURY

New Developments Planned for the Opening of Second Fifty-Year Period

1889-1898 PACIFIC LUTHERAN COLLEGE FOUNDED

ORIGINAL CORPORATION ORGANIZED
FINANCING OF FIRST BUILDING PROJECT
"OLD MAIN" ERECTED

1898-1919 PACIFIC LUTHERAN ACADEMY IN OPERATION

FIRST GYMNASIUM BUILT BY STUDENTS, 1900
SECOND GYMNASIUM BUILT BY ALUMNI, 1912

1920-1928 PACIFIC LUTHERAN COLLEGE GROWS STEADILY

CHAPEL ERECTED WITH COOPERATION OF TRINITY CONGREGATION,
1920
\$290,000 ENDOWMENT PLEDGED, 1927

1928-1941 SIX BUILDINGS ADDED

PRESIDENT'S RESIDENCE ERECTED, 1930
CHEMISTRY AND BIOLOGY LABORATORIES FURNISHED AND EQUIPPED, 1929-1931
HALSTEN RESIDENCE ACQUIRED, 1930
RASMUSSEN RESIDENCE ACQUIRED, 1936
GOLF COURSE AND CLUB HOUSE ADDED TO CAMPUS, 1937
LIBRARY ERECTED—A GIFT FROM FRIENDS IN TACOMA AND PIERCE COUNTY, 1937-1939
AUXILIARY HALL, SENIOR GIRLS' DORMITORY, PURCHASED, 1938
INFIRMARY BUILDING PURCHASED, 1941

1941-1944 "THE GOLDEN JUBILEE PERIOD"

DEDICATED TO PREPARING FOR THE SECOND HALF CENTURY AND GREATER SERVICE TO YOUTH

This period is set aside for a major effort to prepare for the years ahead. The first goal is the successful completion of the GOLDEN JUBILEE CAMPAIGN for \$150,000, primarily among the legal owners of the school, The Pacific District of the Norwegian Lutheran Church of America, and proven friends who are able to give liberally to a GREATER P. L. C.

EDUCATIONAL EXPANSION SETS PACE

Throughout the first fifty years the expansion of the educational program of Pacific Lutheran College has set the pace for the physical expansion. From service on the high school level, the scope has expanded to include a FOUR-YEAR COLLEGE OF EDUCATION, THREE YEARS OF LIBERAL ARTS TRAINING, SUMMER SESSIONS, EXTENSION CLASSES, PRE-NURSING, and CIVIL AERONAUTICS. According to present plans the fourth year of Liberal Arts will be added in the fall of 1942. FULL ACCREDITATION OF ALL WORK HAS BEEN ACHIEVED. GOOD WILL AND RESPECT HAVE BEEN WON IN WIDE CIRCLES.

DR. R. HELLICKSON

1215 Cobb Building

WILLIAM BENJAMIN MAGEE

430 Vance Building

DR. G. M. JERGEN'S

1331 3rd Avenue Building

DR. C. C. HALE

617 Peoples Bank Building

MR. J. B. ERICKSON

3035 Arcade Square

COTTAGE REALTY CO.

6501 Phinney Avenue

LOAN'S A. I. D. PHARMACY

7220 Greenwood

MR. C. Y. YODER

7001 1/2 24th Avenue N. W.

OLSEN FISH MARKET

5433 1/2 Ballard Avenue

R. S. HANSON

Insurance
102 Colman Ferry Terminal, Elliot 3549
Seattle

**PACIFIC COAST
RETINNING**

1011 East Pine Street

MR. L. S. BOOTH

803 2nd Avenue

NYSON GLASS CO.

Fine Leaded Glass for Churches
And Glass of All Kinds

Mel 6000, Seattle

MR. J. B. KIEFER

4207 West Alaska Street

SCIENTIFIC SUPPLIES

123-25 Jackson

BERGER DISTRIBUTING CO.

66 Marion

RYAN FURNITURE CO.

2nd Avenue and University

ABRAHAMSON BRICK CO.

5000 West Marginal Way

SCHORN PAINT MFG. CO.

1128 West Spokane

FIREMENS FUND INS.

460 Stuart Bldg.

**LOMEN COMMERCIAL
COMPANY**

Mining Equipment - Lighterage Service
Coal & Lumber - Standard Oil Agents

Operations: Nome, Alaska

Reply to
327 Colman Building, Seattle, Wash.

**JOHNSON & SON'S
MORTUARY**

1003 East Madison

Greetings...

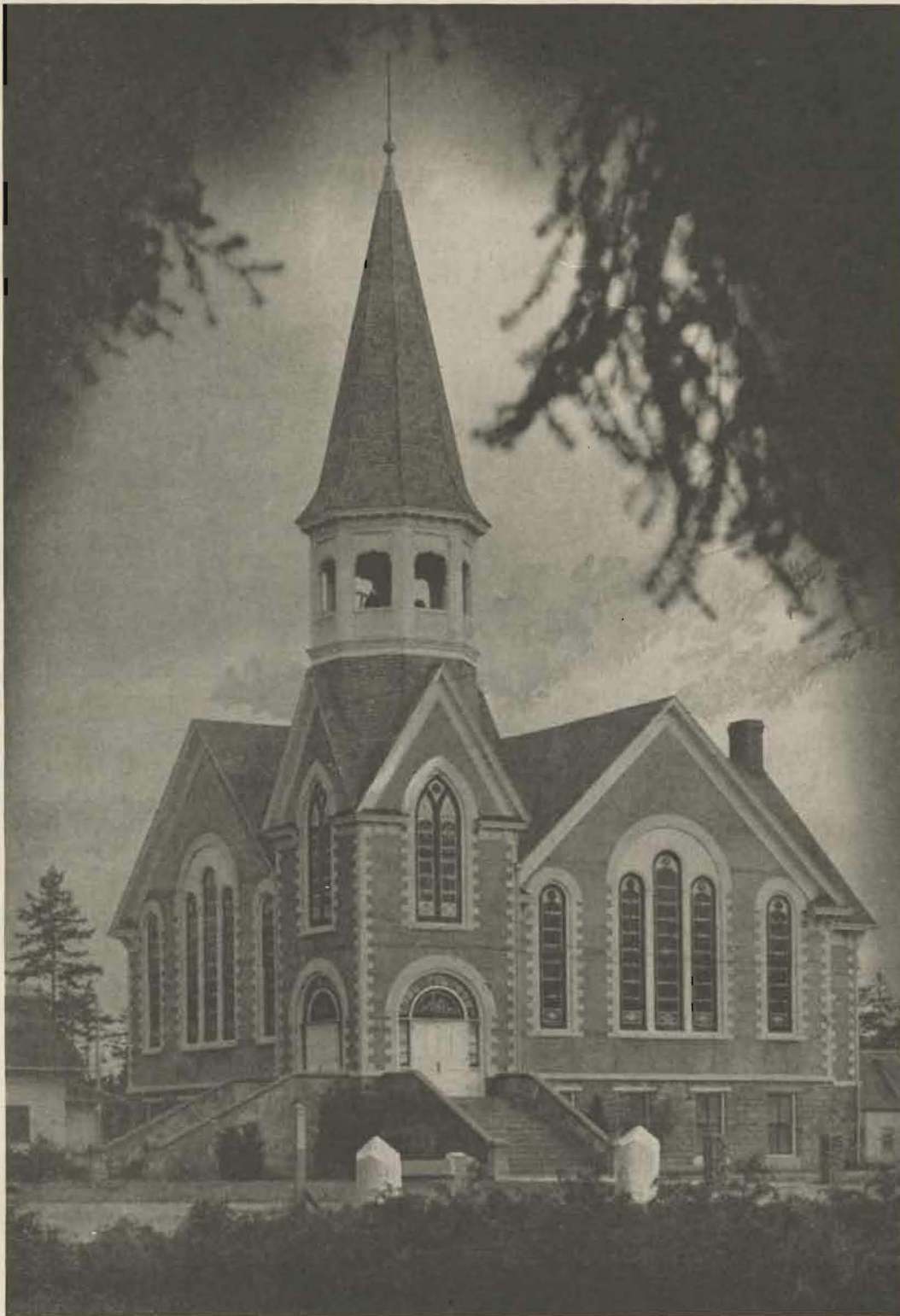
from

**SEATTLE
FRIENDS**

The following firms and individuals
have helped make this pub-
lication possible.



Trinity Church Invites to Worship



Directly across from the campus stands the beautiful edifice of Trinity Church as a constant reminder to P.L.C. students of the importance of religion in their lives. It is the church home of many of the students, and is open to all who may wish to worship there. Its program supplements the spiritual emphasis which the daily devotions at the college chapel typify.

ROY T. EARLEY CO.
TACOMA, WASHINGTON

CARPENTERS' UNION
1012½ SOUTH TACOMA AVENUE

MOUNTAIN VIEW BURIAL PARK AND CREMATORY
STEILACOOM BOULEVARD

COMPLIMENTS OF
**JOHNSONS'
MILLWORK, INC.**

2319 SO. TACOMA WAY
GARland 7111 Tacoma, Washington

P. L. C.
AIMS TO BUILD CHARACTER THRU EDUCATION

MAHNCKE
AIMS TO GIVE QUALITY AND VALUE AT ALL TIMES

MAHNCKE & CO.
918 Broadway

YOUR JEWELERS FOR 58 YEARS

**ALLIES GROCERIES
& MEAT MARKET**

5102 North Winnifred
PROctor 9085

STAR IRON & STEEL CO.

435 East 11th

TOSCANO CAFE

D. A. LENZI
Italian Dinners, Sea Foods, Merchants
Lunch, A la Carte Service
MAin 3026
753 St. Helens Ave., Tacoma, Wash.

We have served Parkland - Tacoma
customers for over 30 years
P. L. C. Has Served 48 Years
Time Proves Dependability

RELIANCE LUMBER CO.

Puyallup Avenue BRoadway 2251

FRENCH GARAGE

WRECKER SERVICE
Expert Auto Repairing - Cylinder Boring -
Body Work - Ignition Parts - Gaskets -
Tires - Batteries
GRanite 8543 10006 Pacific Ave.,

ECONOMY DRUG CO.

Prescription Specialists
Free Delivery
Telephone BRoadway 4751
1114 South Kay Street, Tacoma, Wash.

**LATIMER GOODWIN
CHEMICAL CO.**

Tide Flats

WE MUST BUILD TO HELP KEEP AMERICA CHRISTIAN

A MESSAGE FROM THE CAMPAIGN DIRECTOR

This book is part of the Golden Jubilee Program of Pacific Lutheran College.

In the fall of 1890 a small group of churchmen formed a corporation whose purpose was to build a Lutheran university on the Pacific Coast.

Their aim was to train Christian youth for leadership in Church and State, and thus promote a Christian civilization in this "Land of the Future."

In 1891 they began to build, with the hope of opening school in 1892.

It proved to be a tremendous undertaking, and two years more of heartbreaking struggle passed before the splendid building, now the venerable Old Main, could be dedicated, on Oct. 14, 1894. Two weeks later classes were started.

For almost fifty years this "university," which is now Pacific Lutheran College, has struggled for Christian culture. For many years the institution was small and the achievements humble. But the ideals of the sturdy pioneers have never been lost from view, and their vision of a great Christian institution of learning, which should radiate the "light of the Gospel of the Glory of Christ" (II Cor. 4, 4), has inspired their successors to carry on towards that goal.

Those dreams and that vision are now approaching fulfillment.

During recent years Pacific Lutheran College has experienced a rapid growth, and has now become a senior college. Its prestige and influence have grown in an almost startling manner, and its opportunity is here to assume its place as one of the leading institutions of learning in this great territory.

And it has remained true to the ideals of the founders.

It aims to promote a Christian culture through the medium of sound learning based on a Christian philosophy of life.

The present social crisis emphasizes the urgent need for such a program. Christian culture has in the past lifted humanity from barbarism to civilization, and it offers now the only hope of checking the return to barbarism.

To promote this program, and in order to meet the responsibility and grasp the opportunities which the present social situation presents, Pacific Lutheran College invites the cooperation of all who believe in a Christian civilization.

Pacific Lutheran College has a splendid faculty, men and women of extensive training, sound learning and high ideals. It has a growing student body, with Christian backgrounds, alert and ambitious.

But its physical plant has long since become inadequate. The College needs buildings and other facilities. A building program has been approved which will meet those needs. A start has been made on that program with the erection of the president's residence and the splendid new Library Building.

Urgent needs are a residence for women students, a heating plant and a gymnasium.

With these immediate needs met, the College could go forward in its program of Christian Education.

That it may begin its second half century adequately equipped, the College invites friends to invest in this great program.

To that end an effort is now launched, to culminate in the Golden Jubilee Year, 1944, to find the friends who desire to make such investments.

May God Himself prosper this effort.—Mikkel Lono.

A. N. GUNDERSON

764 Broadway

P. C. PAULSEN

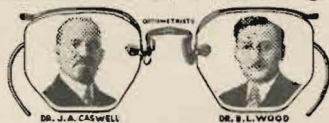
1306 Broadway

Ph. BRdy. 4464 Res. Ph. GA. 1878
"Say it with Brakes and save the Flowers"
IVERSON & WALKER
Brake Service—Safety Building
2201 Pacific Avenue, Tacoma, Wash.
Harvey H. Walker, Prop.

BUCKLEY KING CO.

102 South Tacoma Ave.

CASWELL OPTICAL CO.



9th and St. Helens

HOLT'S ART STORE

Pictures and Frames - Artist's Materials
742 Broadway, Phone MAin 5750
Tacoma, Washington

**PAL O MOTOR OIL
REFINING**

Brookdale

THOMAS GROCERY

Red & White
Groceries and General Merchandise
PRoctor 3556 University Place

For Correct Styles—Wedding Stationery,
Personal Cards
See Us for the Best at the Lowest Cost

GRAVATONE PRESS

CRYSTAL PALACE MARKET
MAin 6423

FRANK P. BORDEN

Tacoma Building

PATRICK COMPANY

13th and Pacific Ave., Tacoma, Wash.
Wholesale China - Glass - Restaurant
Equipment

Phone MAin 0461 Annette Olson
**ANNETTE'S BEAUTY
SHOP**

Specialists in Permanent Waving
Experienced in All Lines of Beauty Work
706 Fidelity Building. Tacoma, Wash.

Greetings From
**CITY HALL
and
COURT HOUSE**

GENEVIEVE MARTIN

Clerk, City Hall

**JUDGE CLARENCE E.
LAYTON**

Justice of the Peace

BLANCHE FUNK MILLER

Court House

E. M. CARD

Court House

ROY CRAIG

County Clerk

E. R. HODGE

Judge Superior Court

J. C. BJORKLUND

Sheriff

FRED G. REMANN

Court House

DR. T. H. LONG

County Coroner's Office

CARL D. FORSBECK

City Engineer

**THOR TOLLEFSON,
Prosecutor**

County Court House

CLIFFORD DAVIS, Auditor

County Court House

Men's, Women's and Children's Shoes
**KARL'S CUSTOM MADE
SHOES**

1109 South Broadway, Tacoma, Wash.
Phone: MAin 6048

DR. J. C. SKAER

DENTISTRY - X-RAY

Suite 1405-06 Washington Bldg.
Phones: Office BR. 2552 Res. PR. 3661
Tacoma, Washington

**WHOLESALE ASSN. OF
TACOMA**

Perkins Building

**AETNA LIFE INSURANCE
COMPANY**

P. M. Snider, General Agent
950 Pacific Avenue
Tacoma, Washington

FRED C. METZGER

Tacoma Building

MacKENZIE PHARMACY

2401 Pacific

DRESWELL CLEANERS

Complete Laundry Service
Howard Slade, Proprietor
8941 South Tacoma Way, GARland 5566

Better Homes Our Specialty
HAMPTON LUMBER CO.

MAin 0108
East End 11th Street Bridge

**DAMMEIER
PRINTING CO.**

811 Pacific Avenue
Tacoma, Washington

Compliments of
**FUEL OIL
SERVICE CORP.**

816 A Street Phone MAin 3171

**ALL KINDS OF
HEATING OILS**

Out of the Blackout---

As this book goes to press we have experienced our first blackout.

When Sir Edward Grey saw the watchman putting out the lights in the streets of London at the beginning of the first world war, he said, "The lights are going out all over Europe and will not be rekindled during our generation."

The putting out of lights in streets and homes is a symbol of that spiritual blackout which is enveloping so much of the world.

Will that blackout stop at our boundaries, or will our children be denied those spiritual values that have made our country the happiest on earth?

That will depend on the faithfulness and courage of the keepers of the Light.

Christian schools have the chief responsibility for preserving the light of a Christian Civilization in the lives of coming generations.

As we build Christian schools do we erect defences against the darkness which would envelop us.

... Let There Be Light!

Pacific Lutheran College is such a bulwark against the threatening blackout.

She is controlled by the great Lutheran Church, the Church of the Open Bible.

She is staffed by a corps of consecrated, spirit-filled, well trained, and loyal teachers.

She has a student body which is enthusiastic, alert.

She has a program which is Christ centered.

She needs more material equipment to exploit her great opportunities and to fulfill her God given task.

You are invited to help her bring more illumination to a world in blackout.

LET THERE BE LIGHT!

Compliments of
**TACOMA BRASS PATTERN
WORKS**
664 East 11th Street

Compliments of
HANSON JEWELRY
257 South 11th

Compliments of
**GRAYSON'S
WOMEN'S APPAREL**
939 Broadway

Compliments of
W. A. RICHMOND
Washington Building

Compliments of
**JACKSON BROTHERS
MEAT MARKET**
1102 Commerce

Compliments of
**THOMPSON REAL ESTATE
OFFICE**
1207 South K

Compliments of
**TACOMA ELECTROTYPE
COMPANY**
15th and Commerce

Compliments of
TACOMA AUTO EXCHANGE
45th and South Tacoma Way

Compliments of
PUGET SOUND FEED CO.
Manufacturers of H. B. Brand Seeds
302 East 26th

Compliments of
**UNITED MUTUAL
SAVINGS BANK**
213 South 11th

Compliments of
**BUSTER BROWN SHOE
STORE**
1122 Broadway

Compliments of
**HANIFY'S LANDING
FOR EATS**
3825 Ruston Way

Compliments of
CARLSON McCALLUM
6014 South Tacoma Way

Compliments of
**PARKLAND VARIETY
STORE**
Parkland

Compliments of
**WEBER PLUMBING &
HEATING CO.**
17 North Tacoma Avenue

Compliments of
ALDER STREET MARKET
3205 North 26th

Compliments of
BUTLERS GARAGE
Rt. 3 Box 404

Compliments of
**BUCK & BOWERS TIRE
& OIL CO.**
114 Puyallup

Compliments of
FRANKLIN FOOD STORES
117 North G

Compliments of
**South Tacoma Appliance &
Roofing Co.**
5445 South Tacoma Way

Compliments of
**DAY'S TAILORED
CLOTHING, INC.**
2901 Pacific Avenue

Compliments of
NORTH PACIFIC BANK
5448 South Tacoma Way

Compliments of
**TACOMA PLEATING
WORKS**
Fidelity Building

Compliments of
**SANITARY PUBLIC
MARKET**
1108 Market

Compliments of
A. L. SCHARF
Tacoma Building

Compliments of
OLSON TUG BOAT CO.
900 Milwaukee Waterway

Compliments of
**AMERICAN
PLUMBING & SUPPLY**
1908 Pacific

PETERSON STUDIO

Portraits by Photography
MAin 1544
764 St. Helens Ave. Tacoma, Wash.

KNAPP COLLEGE

(Established 1921 as Knapp's Modern
Business College)
"The Northwest's Finest Business Train-
ing School"
Tenth and Pacific Tacoma

Hotel Croft and Bus Station

"Free Eats to the East"
Stages Leave Twice Daily for New York
via Los Angeles
MAin 8061 1519 Pacific Ave., Tacoma

If You Want to Live in the Lake District
See

RAY THOMPSON, Realtor

Lakewood Center, La. 2464

NEFF'S FOOD STORE

"The Best of Everything"
Groceries - Meats - Vegetables
Phone MAin 6412 3517 McKinley Ave.

CARLSON'S PHARMACY

Phone GARland 3734
3805 South Yakima Ave.

ROWE RADIATOR REPAIR SHOP

513 South 9th St. MAin 4822
F. G. Rowe, Prop.

BARKS Musician Supply Co.

Complete Repair Department
MAin 7029
762 St. Helens Avenue

From:

C. W. KNUDSON, M. D.

No. 820 Medical and Dental Bldg.
Seattle, Wash.

BOYD MOTOR CO.

We are out of the high rent district and
can give you a good deal. We have a
good service dept. Our prices are
Reasonable

8225 Pacific Ave. Phone GA. 8936

SCHORER'S MACHINE SHOP

We specialize in High Grade Automobile
Repairing, Reboring, Valve Grinding,
Welding, Brake Relining

3730 South G GARland 8352

CRAIG FURNITURE CO.

Radios, Furniture, Rugs, Ranges

1136 - 1138 Broadway, Tacoma

JOSEPH A. BENSON, M. D.

Diseases of the Skin

Office: MAin 8564 Res. MAin 0437
626 Medical Arts Bldg., Tacoma, Wash.

DIERS FURNITURE CO.

5239 South Tacoma Way, Tacoma, Wn.
GARland 3221

HEAD for Success with a well stored
mind and Attractive Hair.

HELEN'S BEAUTY SALON

MAin 5260 2711 Sixth

SUCCESS AND BEST WISHES
FOR OUR LUTHERAN COLLEGE

JOHNSON & SONS

Funeral Directors

Seattle, Wash.

COAST NEON

C. ECKSTEIN

1121 Commerce

JOHNSON & ANDERSON

Groceries, Flour, Hay, Grain, Etc.
On the Mountain Highway, Parkland, Wn.

Ph. MAin 8444 Drugless Health Clinic

DR. ALBERT E. ANDERSON, D. C. S. D.

Naturopathic Physician
401-2-3 Fidelity Bldg., Tacoma, Wash.

"SAY IT WITH FLOWERS"

MIETHKE'S NURSERY and FLOWER SHOP

Phone ATlas 8611
R. F. D. 2, Box 187, Tacoma, Wash.

Phone MAin 1080 Res. PRoctor 2668

DR. J. B. SCHLUND

Dental Oral Surgeon
Extracting, Detal X-Ray
1220 Fidelity Bldg., Tacoma, Wash.

GEORGE HOSKINS AUTOMOTIVE SHOP

411 Fawcett Near 4th and Tacoma
MAin 5249

JOHN G. THORSTENSON

Certified Public Accountant
W. R. Rust Bldg., Tacoma, Wash.

Compliments of

PERCY COX, Supt. of Schools

Court House

Compliments of

DEPOT SUPER SERVICE STATION

Pacific and Jefferson

FASHIONS
FOR THE MOST
IMPORTANT
OCCASIONS IN
YOUR LIFE!

Lou Johnson, Inc.

755 Broadway

Compliments of
RIGGS OPTICAL CO.

Medical Arts Bldg.

Compliments of
PERKINS BUILDING

Tacoma's Finest Law Library
Available to All Tenants
1101 A Street

Compliments of
**STANDARD AUTO PARTS
COMPANY**

2140 Pacific Avenue

Compliments of
DEMICK & LICHTENBERG

New York Cash Market
1101 Market

Compliments of
WAKEFIELD MOTORS

Chrysler - Plymouth
Sales & Service
5636 South Tacoma Way

**SOUTH TACOMA DRUG CO.
LUDWIGS DRUG STORE**

5401 So. Tac. Way Tel. GA. 1295

Compliments of
**CENTENNIAL FLOURING
MILLS CO.**

Waterfront & 5th North

Compliments of
**MICHAEL BROS. SERVICE
STATION**

South 12th and L

McELWAIN SHOES

949 Broadway

Greetings from
**HOOVER STORE
EQUIPMENT CO.**

W. I. HOOVER

1726 Pacific

Compliments of
**TACOMA - FORT LEWIS
AUTO FREIGHT**

523 Puyallup

Compliments of
**STANDARD IRON and
WIRE WORKS**

315 East 25th



937 1/2 Broadway
Across from Rhodes Bros.

PERSONAL SERVICE

BECK LUMBER CO.

Garland 4914

**LUMBER - MILLWORK - CABINETS - MOULDINGS
HARDWARE - PAINT - ROOFING**

5102 SOUTH WASHINGTON

TACOMA, WASHINGTON

**ALMIN L. SWANSON &
SONS, INC.**

Real Estate - Loans - Insurance - Rentals
1025 - 1030 Rust Building
MAin 4168
Tacoma, Washington

ICE DELIVERY

509 PUYALLUP

WE FEATURE
"HALOETTE PORTRAITS OF DISTINCTION"
and
"HOLLYWOOD SHADOWGRAPH LIGHTING"

**GRADUATION
CONFIRMATION
and
FAMILY GROUPS**

The Krug - Lutz Studio

762 Broadway

Opp. Winthrop Hotel

Compliments of
**C. S. BARLOW
& SONS INC.**

1715 Dock

Jordan's - the good bread

has served Pacific Lutheran College tables for many years. This same delicious bread is available at YOUR grocers. Ask for it when you shop!

JORDAN'S Fresh-As-A-Daisy BREAD

Look For The Loaf
In The Bright
Gingham Wrapper!

BERGH GRIGGS CO.

Plumbing-Heating-Ventilating

709 PACIFIC

Compliments of

FERN HILL BEAUTY SHOP

8322 South Park

Compliments of

STAR LAUNDRY TRAY

711 South 27th

Compliments of

DR. J. H. HENDAY

2002 East 28th

**ISAVE MONEY ON
MY AUTOMOBILE
INSURANCE**



State Farm Mutual Automobile Insurance Company's policyholders are selected careful drivers—therefore, they have fewer accidents. Fewer accidents make lower insurance rates.

If you are a careful driver, you can buy complete coverage automobile insurance at a cost lower than you may realize. Telephone or write today for full information—No obligation, of course!

C. W. OVERTURF

Washington Bldg.

**STATE FARM MUTUAL
AUTO INSURANCE CO.**

Bloomington, Illinois

BEST WISHES FOR A GREATER



TACOMA ENGRAVING CO. TACOMA

**LEYBOLD-SMITH
SHINGLE CO.
INC.**

3300 RUSTON WAY

Saluting - - - -

**PACIFIC LUTHERAN
COLLEGE**

The progressive spirit of Pacific Lutheran College—culminating in the achievements of this milestone year—adds immeasurably to the cultural and spiritual life of our community. Tacoma City Light salutes this growing institution—and wishes it many years of even greater success.

TACOMA CITY LIGHT

R. D. O'Neil, Commissioner

Verne Kent, Superintendent

**WOODWORTH &
CORNELL, Inc.**

Contractors

122 East D Street

Tacoma

Fairhurst Lumber Company

820 TACOMA BLDG

TACOMA, WASHINGTON

PIONEER, INCORPORATED

102 SOUTH 12TH

PETERMAN MANUFACTURING CO.

Tacoma, Washington

PETERBILT
products are
GOOD PRODUCTS

Congratulations

Nalley's is most happy to extend sincere greetings on the Golden Jubilee year of this fine college. May you continue to flourish and progress in the years to come. Your splendid accomplishments have brought fame and prestige to our city.

Nalley's is also a Tacoma institution, serving the public with the finest in quality foods. During the more than twenty years of business Nalley's has builded and progressed until its products are now well and favorably accepted throughout the entire Northwest.

NALLEY'S INC.

General Offices, Tacoma, Washington



FOR FINE FOODS

Buy With Confidence

- ★ **Top Quality**
- ★ **Low Prices**
- ★ **Complete Stocks**

Western Stores
For Western Housewives

TACOMA
PUYALLUP
OLYMPIA
CHEHALIS
CENTRALIA
ABERDEEN & HOQUIAM

