

The Mooring Mast

Bring Home
Those Savage Scalps

VOL. 27

PACIFIC LUTHERAN COLLEGE, FRIDAY, OCTOBER 21, 1949

NO. 5

Meet Your Student Council; Speech Tourney Ed Dorothy, Inter-Club Rep.

A familiar personage in campus life and an active supporter of all student interests is Ed Dorothy, senior from Winlock, Washington.

Ed is Inter-club representative to the Student Council. He is a graduate of Winlock High School and is majoring in education. His minors are speech and science. Ed has held numerous organizational offices while a student at PLC, and at the present time he is corresponding secretary of Inter-club Council. He is also a member of Curtin Call and the Letterman's clubs. He won his letter in basketball in his freshman year. At the present time his duties as assistant director of one of the homecoming plays is keeping him well occupied.

Some of Ed's avocational pursuits are golfing, tennis and bowling. He smiled when he said that his favorite pastime was Eating, with emphasis on the Eating.

Ed stated that he was exceptionally interested in Inter-club Council. "This," said Ed, "is an important move toward student government. If faculty and students cooperate," he continued, "this step will prove extremely effective." He said he was glad to see it get started.

Ed also commented, "Sportsman-

ship is good on the part of the students at intercollegiate games; even if we love. This is one of the best representations a school can make."

This has been a means of introducing Ed Dorothy, Inter-club representative to the Student Council, to you. Next week we will present another member of the Council so that you may "get acquainted."

Booths Permit Record Voting

The voting booths that have been so much in demand among the students during last year's school term turned in a record vote as of Tuesday last. The vote for homecoming queen was 544 total votes cast, and this tops any previous voting mark for any ASB election.

When the booths were suggested last year there was some comment to the effect that they would not serve the intended purpose of increasing the student vote to any appreciable extent. The result of this election clearly indicates that the students of this college will vote when it is made reasonably convenient to do so.

A run-off election between the top four candidates was held Thursday, and the queen and her attendants will be announced in the next issue of the Mast.

PLC's 991 Students From 21 States, Hawaii, Alaska

Students travel thousands of miles every fall to attend colleges in the United States.

The 991 students attending Pacific Lutheran college are a typical example. A breakdown of enrollment figures compiled by Registrar Philip E. Hauge's office reveal that the student body comes from 21 states, two territories and three foreign countries.

Coming from the farthest distance in the nation is Ernest Randolph from Caribou, Maine. He came because he heard it was a good college and friends recommended it to him.

From down Texas way came David Knudson and his sister Amy. Their home town is Gruver.

Anthony Rakas came from Ambridge, Pennsylvania. He became acquainted with the Pacific Northwest while in the service, and decided to come back.

Alaska has 11 representatives in the student body, and the one from the farthest north is Thelma Jorgenson of Nome.

Speech Tourney Convention Set

The initial debate competition for this term has been set for Stanford University on the 21, 22, and 23 of November.

Events in the tournament will be debate, congress, extemp, after-dinner and experimental speaking, impromptu and oratory. PLC will send seven contestants which will be entered in from three to four events depending upon the individuals.

The debate squad now has a working crew of 25, and with only seven slated for the first tournament, competition is keen. The squad members are working for berths on the Stanford travelling squad, and their efforts will be rewarded when the speech director, Mr. Theodore Karl, announces the squad assignments during the first few days of November.

Mr. Karl stressed that larger squads will participate in the other tournaments to be held this term, and that those persons who miss the Stanford trip will have as much opportunity to compete in the other tournaments as the squad who will make the initial trip.

AASGAARD VISITS

Dr. J. A. Aasgaard, president of the Evangelical Lutheran Church, spoke in Chapel this morning. The Minneapolis church leader is on an inspection tour of ELC institutions and congregations in the Pacific Northwest. Sunday afternoon he will dedicate the newly-completed Josephine Sunset Home in Stanwood.

Representing the "bread basket of the nation," the Midwest, are 30 students.

Canada has two in the student body, Estonia has three, and Latvia has one. The latter four students are from D.P. families.

When it comes to numbers, Washington leads with 802 students. Oregon is next with 64. California has 29, Idaho has 26 and Montana, 13.

Other states represented in the PLC student body include Colorado, Illinois, Iowa, Michigan, Minnesota, Missouri, Nebraska, New Hampshire, North Dakota, Ohio, South Dakota, Wisconsin and Wyoming.

From Lanai City, Hawaii, came James Williamson.

It may or may not be true that Old Main was built during the days that Britain controlled this part of the Northwest, but there are still some who persist in the claim that the faint remainder of the slogan, "54-40 or Fight" can be found on the North wall.

Homecoming Program Full Of Fun And Glamor

The big campus clock is all wound tight, ready to spring into PLC's 1949 annual Homecoming as soon as the alarm is set off. Final plans are being completed and last minute hands will be pushed into place for the celebration starting next Friday evening.

Under the direction of Vern Fink and Walt Worley, two one-act plays will be presented October 28 in the Student Union Building. The plays, "Twelve Pound Look" and "Dear Departed," are under the joint sponsorship of Alpha Psi Omega and Curtin Call Club. Admission is free.

Inter-club Vote Declared Illegal

The recent election held by the ICC to choose an adviser has been declared illegal by the group's own legal committee. The decision arose from the discovery of four votes that were cast by persons who were not members of the ICC.

Don Graham, chairman of the legal committee, has prepared the joint report of the majority and minority opinions of the committee. Bob Brass, Gene Ahrendt, Larry Hauge and Marcus Reitz delivered the majority opinion that the elections be declared illegal and that the vote be held again. Don Graham delivered the dissenting opinion and suggested that the organization validate the election.

As of press time, the Mooring Mast had no information as to the outcome of the committee's report to the ICC.

Student Council

Approval of three constitutions were the main order of business for the Student Council at its meeting last Wednesday. The constitutions came from Tawasi, a revision of their former constitution, the LSA, and the College Press Club. The LSA is now a campus club in the literal sense as contrasted to its previous function of serving as a coordinating council for the religious groups on the campus. All three constitutions were approved, and the organizations are eligible for membership in the Inter-club Council.

Business Club Sponsors Talk

S. E. Dahl, a representative of the Sun Life Insurance Company of Canada, will be guest speaker at next Wednesday's meeting of Alpha Sigma Lambda. The meeting will take place in CB-1 at 7:30 p.m.

A veteran of 21 years in the life insurance field, Mr. Dahl is a past president of the Tacoma Association of Life Underwriters. His subject will deal with some phase of the life insurance business.

Alpha Sigma Lambda President Don Anderson has announced that the meeting will be open to all who wish to attend.

Ingenuity plus will participate in the form of floats, contributed by all organizations and classes on the campus, in the parade Saturday morning. In the afternoon, a crucial gridiron tilt between the Galloping Girldes (Day Girls) and the Bruising Bussels (Dorm Girls) is scheduled. Mr. Karl has been asked to officiate as bobbin carrier and referee, and assisting him will be four other members of the faculty.

Working laboriously on the pep rally to be held after the game is over are committeemen "Giz" Rosin and Phil Falk. In the evening at half-time of the big game, the coronation will take place. Performing the honors will be Eldon Killo, president of the Alumni Association, who is now teaching at the Parkland grade school.

Sunday morning a special church service is offered at Trinity Lutheran Church. Raymond Pflueger, son of Dr. Pflueger, will preach the sermon. At this service the "Choir of the West" will make its first public appearance of the 1949 school year.

Festivities will be climaxed by a tea held in the afternoon in the Student Union Building, bringing to a close the three-day royalty reign.

Democracy at Work

(An Editorial)

A few years ago there was much talk about the U. S. having the form of government and the method of governmental operation that made it impossible to enforce law against subversive elements without violating free institutions.

The friends and sympathizers of the Communist party have waged a spirited campaign to assassinate the character and reputation of anyone who proposed that the existing laws be enforced against subversive elements. But, there were enough men of courage in our national government to demand that the laws (Title XVIII, U. S. Criminal Code) against these "borers from within" be enforced. They were attacked by communists, so-called liberals, and a wide assortment of well-meaning but misled people.

What has been the outcome? A trial by jury, under the American concept of "guilty until proven innocent," has brought about a great step toward protecting a free people, and by means that are compatible with the prerogatives of a government founded upon the principles of liberty.

Pi Kap Schedules Hi-School Congress

Effort is rapidly accumulating, insuring the success of a competitive student congress for high school students to be held on the campus on the 12th of November. Sponsored by PLC's chapter of Pi Kappa Delta, the congress will be based on the legislative body of the United States.

A Senate and a House of Representatives will be established which will be divided into several committees. These committees will write legislation or discuss actual national legislation. Their bills or suggestions will be discussed and voted upon in meetings of the senate and house, and will be further discussed in a joint session of the two houses where the final decisions will be made.

Directly following the adjournment of the congress awards will be made, based upon the actual participation in and contribution to the congress by the individual student. For first, second, and third places, trophies will be given. In addition to these large trophies, certificates of merit will be awarded to the chairmen of committees.

The representation to the congress will be decided upon by the enrollment of the high schools, with every school to have two senators and at least one representative.

It is expected that students attending the event will be representative of all fields of study and interest such as music, economics, athletics, speech, and science. They are to be student leaders, chosen from the actual student bodies of the various high schools.

All Western Washington high schools have been invited to participate.

Drivers Warned

Speedsters in the Parkland area are to become the object of the sheriff's special attention. College "hot-rods" have been tabbed as contributing offenders to the speeding and parking problems in the Parkland area.

The drive to issue tickets to all violators of parking restrictions and the new 25 mile per hour speed limit is on in full force, and motorists of the area are warned that violations will be strictly enforced.



SHOWN ABOVE is the Homecoming committee that has been working for the past few weeks to make the event an enjoyable success. Left to right are: "Giz" Rosin, Dolores Langseth, Roberta Schoessler, Phil Falk.

Freedom Goes Where
The Newspaper Goes

The Mooring Mast

Published every Friday during the school year by students of Pacific Lutheran College.
Entered as second class matter, October 2, 1925, at the Post Office at Parkland, Washington.
Office: Student Union Telephone: GRanite 8611
Subscription price—\$1.50 per year

Printed on the Campus by La Crosse Printing Company

EDITOR LOU INNERARITY
ASSISTANT EDITOR MARLENE SCHWENKE
Editorial Staff Sports, Bob "Stretch" Ferguson; Religion, Alan Hatten; Speech and Language Arts, Donald Graham; Society, Lillian Leikau; Drama and Music, Carol Schuler; Copy, Edna McCall.
Composing Staff Verne Brauvet, manager
Special Writers Glenn Clark, Norman Hawkins
Reporters Don Breimo, Glenna Nelson, Dorothy Broomfield, Bill Moran, Don Gannon, Beverly Allen, Luther Kroenk, Steve Kennedy, Helen Ener, Olive Knutson, Roy Berg, Bob Johnson, Barbara Jonson, Stan Kuern, Jo Ann Nelson, Frances Biers, and Jon Ericson.
Business Staff
Business Manager Phil Falk
Advertising Jo Ann Nelson and Dorothy Broomfield
Circulation Marion Cummines and Jo Friday

Mentioning No Names

It is interesting to note that one sports scribe, who jerks his pen for every issue of the Tribune that we see, has put himself out on a not-too-sturdy limb.

This interesting and colorful (red around the ears since CPS fell flat in front of the Central Wildcats) writer has been verbose and blustering in his dreams of seeing CPS send four representatives to the Shrine game, and has had a great time teasing himself with the possibilities of CPS winding up as the Evergreen crown-bearers. We admit that it is a possibility, but it is also a possibility with everyone except St. Martin's. We remember something that was said about a "stranglehold" on the Evergreen title by the winner of the Eastern-CPS tussle that took place recently. The "stranglehold" has evidently loosened enough to permit the other teams in the conference to breathe, at least. Witness Central.

There has been a lot of prideful talk by some students from a Tacoma college that they are too big for the Evergreen teams, and that they will have to play independently against WSC and the others in order to meet any worthwhile competition. We see by the Trib' that CPS really asked for a game with the state college Cougars to be played at the end of this Evergreen conference run. Interesting, isn't it? There was once a guy who went so far out on a limb in his ardent, though not perspicacious, pre-judgements that he embarrassed his favorites more than he did himself.

Our closing comment: "HAH!" —LAI.

It's a Tough Life!!

There seemed to be a quantity of moans and groans in the Parkland Grill last Friday and Saturday nights from some of the anxious but not-too-successful freshman girls. They were voicing the tear-jerking opinions that there was nothing to do at PLC. What a shame. The only things to do were to be found in a professional stage production that enjoyed a successful run on Broadway—the *Glass Menagerie*—which was on Friday night, and a whing-ding football game between PLC and St. Martin's on Saturday night.

A top-drawer show and a thrill-bursting football game are about all that PLC has to offer of a Friday and Saturday night on one weekend, and if that is not sufficient then I guess we don't meet the expectations of some of the students. Perhaps the girls weren't dated for the game, but surely their school spirit runs a little beyond whether they go to the game with the guy they hope will ask them for a date.

The classic remark that was made on Friday night ran like this: "Well, I guess we may as well go to the show downtown. It costs a whole dollar to see the *Glass Menagerie*." *Editor's Notes* Downtown show—50 cents students admission. Plus 34 cents for a long bus ride both ways. Without another nickel spent the cost was still 84 cents for the "shown downtown." Seats for *Glass Menagerie* run from \$.50 to \$8.50 on the Great White Way by a professional company.

I guess it is tough, though, when the women outnumber the men by a two-to-one ratio. Cheer up, girls, after all things will probably be worse this weekend with nothing but a stand-out conference football game to witness on Saturday night. Enjoy your coffee. —LAI.

Chapel Quotes

"No man can make spiritual progress without being reconciled with God . . . through the remission of his sins in Jesus Christ."

—Dr. Pflueger

"Heaven is distinctly a place for God's people; for those who have met in Jesus Christ." —Pastor Roe.

"Education is a matter of preparing for the responsibilities of life." —Dean Haug.

As We See It

A Tawasi Feature

Attention PLCites, it's our forum time again. In explaining the meaning of the forum, Webster says, "It is an organization, meeting to discuss subjects of current interest." Realizing that many students in past years and even today are undecided about their vocations, the Tawasi Club found the forum the solution for supplying vocational information to the undecided, and additional information to those who are already interested in a special field. During the past year, through the courtesy of the Tawasi organization, forums were held on such current fields as education, medicine, religion and business.

This year these educational forums will continue, and in the offering for the fall semester will be discussions on speech, music and law, with plans in the making for the new year. The first of these, a speech forum, is to be held on October 24, with Mr. Karl as the moderator. Remember an important part of the forum is the question period following the speakers, so come prepared to ask questions concerning speech, drama, radio. Students, this service is for you, so come out and hear a professional interpretation of your vocation.

In beginning their forums for this school year, Tawasi takes pride in offering a panel of leaders in the field of speech. It is significant that this field has been chosen for the initial forum, for it is a field that touches upon all vocations and every position in life.

Tawasi has arranged to bring together authorities in the three phases of the field: radio, drama, and professional speech. Mr. Arch Morken, general manager of KJR, will represent radio; Mrs. Pauline Schaffer of the speech department at Pacific Lutheran College will bring us information concerning drama activities, and the head of the speech department at the University of Washington, Mr. Horace Rahskaff, will represent professional speech. Mr. Theo. O. H. Karl, head of the speech department at Pacific Lutheran College, will serve as moderator for the discussion.

This program will be presented in the Student Union building of the college on Monday evening, October 24, at 7:30. There will be no charge for admission. Members of Tawasi extend a friendly welcome to the general public.

WAA Elect President

At an election held Wednesday, the Women's Athletic Association elected Reitha King to fill the office of president since Marge Brammar, elected last year, did not return. Chosen ICC representative was Donna Hellman, and advertising manager, Jo Ann Nordvedt.

Spreddball is the main sport scheduled for this part of the season with Donna Hellman as manager.

All WAA girls are requested to have their dues in by October 30.

DANIELS HARDWARE



ON THE HIGHWAY CORNER
PACIFIC AVE. & GARFIELD

Patronize Your Advertisers

A GENUINE 10% DISCOUNT
ON SALES AND SERVICE . . .
WITH PRESENTATION OF A
STUDENT UNION CARD.



Hal's
College Radio

415 Garfield St. Parkland

Gladiators Down Rangers, 25-20

Playing good ball in the second half, the Gladiators downed the Rangers of St. Martin's by the score of 25 to 20 last Saturday in the Lincoln Bowl. PLC, trailing 13 to 7 at the half, came out a new ball club, and pushed over one touchdown in the third quarter and two in the fourth quarter against one fourth quarter score by the Rangers. Then the Lutes cut short a last minute thrust by the Laceyites by intercepting a pass inside their own 20-yard line with seconds left to go in the game.

The game started with a rush as PLC, taking the opening kickoff, drove 63 yards, and climaxed by a two-yard plunge for the first score of the contest. A few minutes later the Rangers started a drive, and they too scored to even up the contest. A short time later St. Martin's recovered a fumble on the Lutheran 17 and Donahue flipped a pass for St. Martin's second touchdown.

Second Half Rally

In the third quarter, PLC, met with a fourth down on the Ranger 38, they gambled, and Lowell Knutson fired a short pass to wingback Gene Strandness who dashed to the 15. Big Johnny Jurkovich plowed through the line, cut to his left and scored from the 11 two plays later.

PLC started the fourth quarter on St. Martin's 25-yard stripe and scored on a Knutson to Habegger pass good for 30 some yards.

Soon the Gladiators had the ball again on their own 41 and here came one of the best plays of the game. Johnny Jurkovich faded back and flipped a long pass to Vern Morris who caught it on the 25-yard line and trotted across for the fourth touchdown for PLC.

St. Martin's wasn't finished yet. Donahue, frustrated in an attempt to find a pass receiver, dashed seven yards for a score. Then the Rangers tried an on side kick which they recovered and it looked like they might be rolling again, but Bill Stringfellow intercepted the pass on PLC's 20-yard line and the game ended as Jurkovich sliced through left tackle for 31 yards.

BLUE SPRUCE UNION 76

PARKLAND GR. 9996

Centre Cleaners

FOR ALL CLEANING NEEDS
Parkland Centre Building
One block from Campus
Carl and Ingrid Fynboe, props.

Clover Creek Market & Lockers

GROCERIES - MEATS
Brookdale GR. 8013

Call . . .

B & B GLASS AND PAINT CO.

for
ALL GLASS NEEDS
Complete Service

748 MARKET STREET

MA. 1442

Parkland

XXX

Featuring the . . .
Merchants Lunch, 50c

STUDENT MEAL TICKET
A \$5.50 Value for \$5.00

Two Blocks North on Mt. Highway

New Teacher Of Piano Here

The scope of piano and organ instruction will be broadened this year with the addition of Mr. R. Byard Fritts to the music staff. Mr. Fritts plans to offer a regular of piano selections by classical, romantic and modern composers.

Having composed choral music in the past which was sung by the Wittenberg-A Capella Choir, and having enjoyed the presentation of one of his Symphonettes by the Eastman Rochester Company, Mr. Fritts will compose choral music for publication in his spare time.

Mr. Fritts received his Bachelor of Music degree at Wittenberg College, and studied at the Eastman School of Music, Rochester, New York. During the war, the new piano teacher served with the naval forces on Guam as a bull-dozer pilot, and while there he played the piano and the trombone in a show band which received a citation from Admiral Chester Nimitz.

WANT SOMETHING?

Lost it?—Found it?—Want it?—or want to get rid of it?—You'll get results from a Mooring Mast Want Ad. Easy rates and efficient service will be yours for the asking. Contact the Mooring Mast office for particulars. Remember, over a thousand people read the Mooring Mast. Don't let this chance go. Buy an ad and watch the results.

Patronize Your Advertisers

BLUE RUSTIC

UNDER NEW MANAGEMENT
We feature home-cooked meals and
homemade Pies and Donuts

YOU'LL LIKE
JIM'S
BARBER SHOP
Airport and Pacific

WEDDINGS - CORSAGES FUNERALS

Stella's Flowers
Artistry in Flowers
Parkland Center GR. 7863

The CLEAN Place to Buy and
Store Your Meat at Lower
Prices . . .

PARKLAND LOCKERS

A. J. (Jim) STERN
11012 Pacific Ave. GR. 7111



Lutes Out To Scalp Savages At Cheney

"Time Out"

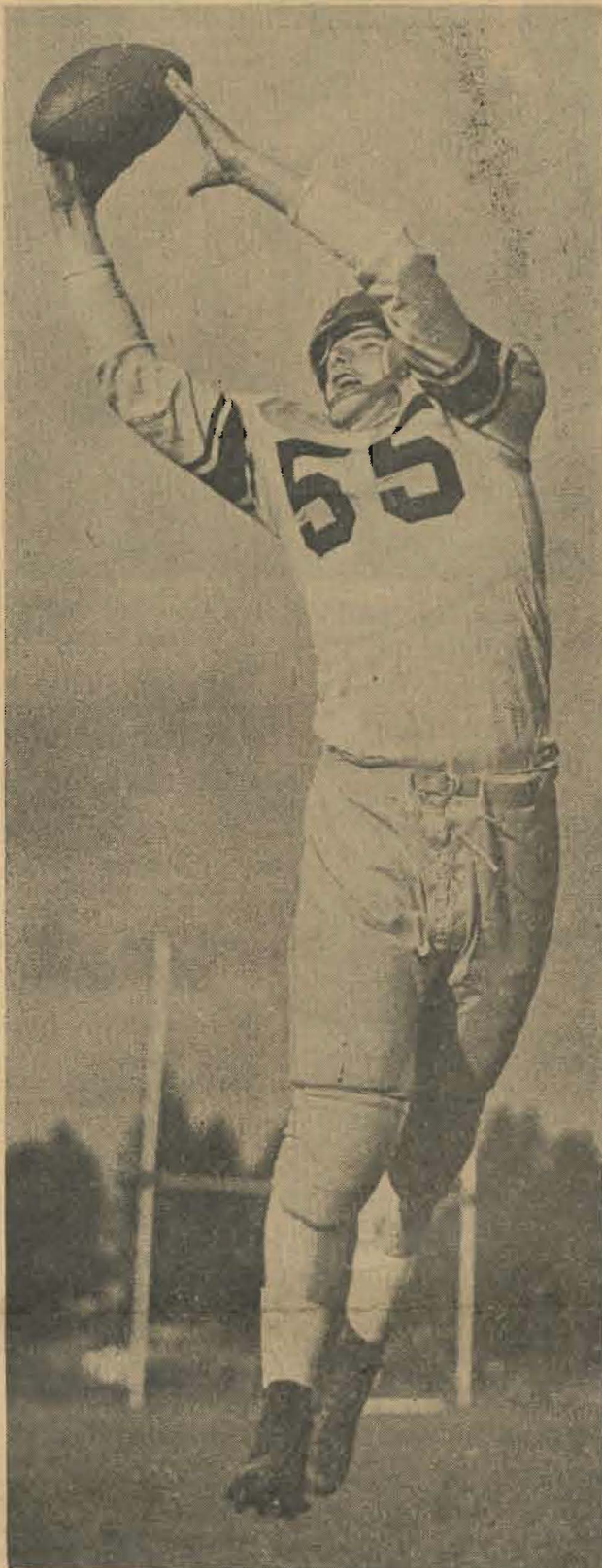
By "Stretch" Ferguson

Last Saturday the Gladiators won their first game of the year. It was a thrilling game and PLC rooters were kept on edge as the valiant Rangers of St. Martin's never gave up and tried desperately to win the game on a last second pass. But alert defensive playing by Bill Stringfellow, who intercepted it on the 20-yard line, ended the threat and the game ended on the next play.

In the first half, the Lutes looked like a sloppy ball club and nobody played up to par. But the second half was a different story and the boys played good ball as they pushed across three touchdowns. Vern Morris looked like his old self when he caught Jurkovich's pass on the 23-yard line and neatly pushed Cebula, Ranger back, out of his way as he romped to the touchdown. Jurkovich played one of his best games as full-back, and he probably will play that position more often. His passing was good, and with Lowell Knutson also throwing the ball, the passing attack gave us two touchdowns and set up a third.

Tomorrow they will travel up to Cheney, and play the tough Eastern Washington team. About nine of the men won't be able to make the trip because . . . Gene Strandness is taking a Medical Board examination, and John Waldorf was injured in last week's game. He dislocated his wrist and even though the cast will be off, it is unlikely that he will see any action.

But after last week's victory the spirit of the team has risen and they feel that they can beat Eastern.



VERN MORRIS, pass-catching end, will see plenty of action tomorrow night when the Lutes tangle with Eastern Washington Savages. Big Vern led the team in scoring last year with six touchdowns and was all-conference end. He has been a starter all season and plays good defensive ball as well as offensive.

EVERGREEN CONFERENCE STANDINGS

	W	L	T	PF	PA
Puget Sound	2	1	0	53	28
Whitworth	2	1	0	55	40
Central Wash.	2	1	0	46	27
Eastern Wash.	2	1	0	47	39
Pacific Lutheran	1	1	1	38	45
Western Wash.	0	1	1	19	26
St. Martin's	0	3	0	20	73

Games This Week

Pacific Lutheran vs. Eastern at Cheney, 8 p.m., Saturday.

Whitworth vs. Western at Bellingham, 8 p.m., Saturday.

Central vs. British Columbia at ancouver, 2:15 p.m., Saturday. (Non-conference).

Puget Sound vs. Willamette at Tacoma, 2 p.m., Saturday. (Non-conference).

St. Martin's vs. North Idaho College at Lewiston, 8 p.m., Saturday. (Non-conference).

At Ellensburg an underdog Central team struck successfully by air three times in the second quarter in gaining a 21 to 13 triumph over the previously unbeaten Loggers of the College of Puget Sound.

In a Saturday afternoon game at Spokane, Whitworth, another unbeaten team, was nipped 27 to 20 by the Eastern Washington Savages.

The resulting four-way tie for first place between Puget Sound, Whitworth, Central, and Eastern is due to be broken in games tomorrow. Eastern or Whitworth is expected to take the lead since the other two pace-setters, Puget Sound and Central, will be unable to bolster their Evergreen win column because of non-conference games.

John Jurkovich, who has been alternating at fullback with Jack Guyot, stands third in ground gains throughout the Evergreen Conference. He has a total of 504 yards this season.

Crystal Ball

By Lou Innerarity

Wot Hoppen? The predictions for last week sure slipped under the rug when the results came out. No one feels bad here, though, because it was a pleasing bit of news to this column that the two "undefeated" teams (Whitworth and CPS) are no longer claimants to such a position. The prediction for the PLC-St. Martin's game went wrong, but then the crystal ball revealed only the PLC touchdowns and craftily obscured the Ranger's that scored. Let the past lie dead, and by the same token let us look to the future.

The forecast for this coming set of games finds the old unreliable ball telling us that PLC is going to play a hard-fought game against Eastern Washington's Savages, and come out on top. The margin of win is uncertain, but it is there. The rest of the games stack up like this:

Whitworth falling before a rough Viking attack at Bellingham.

CPS meeting an underpowered eleven from Willamette.

St. Martin's going under for the long count from N. Idaho.

Central Wildcats picking the plumes from the Thunderbirds.

None of the games will be walk-aways, according to the crystal, with the GPS win over Willamette being the possible exception.

Note: The Crystal Ball now has a score of four wrong and one right. Horrible, isn't it?

T. G. A. Tourney; College Course

PLC divot-diggers who plan to play golf this weekend are being asked to do so today, as the College course will be reserved for the Tacoma Golf Association Sweepstakes this Saturday and Sunday, October 22 and 23. The Parkland Men's Golf Club has asked this privilege so that the visitors will be able to play through more quickly.

College players who are also eligible to play in the TGA event include Coach Marv Tommervik, Hal Hoiby, Bob Klett, Jerry Jurkovich, Frank Treloar, Hap Anderson, Lamont Hedlund, Leo Gaume, Bob Dinsmore, Bud Haley, Steinar Gorud, and Roy Hagen.

This is the only occasion on which the course is reserved, it was emphasized, play being free to all students at all other times during the school year.



PIPER
FUNERAL HOME
Phone HILLSIDE 8479
5436 So. Puget Sound Ave.

Patronize Your Advertisers

From The Bench

By Brass

Last weekend proved to be an interesting one in the Evergreen Conference. When the Whitworth Pirates went down in defeat to the Savages from EWCE, a four-way tie for league leadership developed. The Pirates had been riding high on the top of the standings, until that fatal afternoon of October 15 when Eastern seemed to have different ideas about who should cop the Conference lead; and the Savages came out on the long end of a 27-20 score.

The battle was hot and tough for both teams, but the Eastern squad was a little bit tougher. The Pirates showed up fine in their aerial attack, but couldn't get their ground operations working. They found that punching through the forward wall of the Easterners was easier said than done.

This week, as the Gladiators travel eastward to vie with the Savages, the four-way tie (between Eastern, Whitworth, Central and CPS) could be broken up. This game will be one of the only two tiffs played this weekend between conference schools, and hence the other games will have no effect on the standings.

Not much is known about Eastern, at this writing, except that they are a tough squad to beat on the ground.

STRANDNESS TO MISS GAME!

Although Gene Strandness will not be taking the trek across the mountains, this column wishes him luck in the pre-medical exams he will be taking all day Saturday.

SPLINTERS . . .

It seems as though the championship crown that was destined for CPS, according to a certain downtown sports writer, could possibly fit on another school's head . . . Assistant Coach Leo Gaum has earned letters at both Central and CPS; their loss is PLC's gain . . . A nightly battle rages on the practice field, between Coaches Tommervik and Harshman; they still haven't found out whose touch-football is the better . . . What's wrong with the University of Washington's football team? A student at the "U" has the solution in firing the present coach and some of the players. He states that they should have a home-grown team. He could be

The Gladiators of Pacific Lutheran College tangle with the Eastern Washington Savages tomorrow night in Cheney. This game is important to both teams and the winning team will be shoved up near the top of the Evergreen Conference.

Not since the days when Tommervik and Harshman played against Eastern has there been a Pacific Lutheran College victory over the Savages. In 1937, the first time the two teams met, Eastern won 6-0; again in 1938, then in 1939, the Lutes came out on top, 18-14. PLC won again in 1940 and in 1941, but lost in 1942. Ties resulted in 1946 and 1947, and last year the Savages took a 14-12 nod.

The game tomorrow night promises to be a thrilling one from start to finish. The Lutes have been practicing on a passing attack all week and it looks like Jurkovich, Knutson, and Stringfellow will be throwing the ball all over the field.

A 33-man squad will go on this trip. Also, it was announced that guard John Waldorf injured his hand against St. Martin's and X-rays later proved it was badly dislocated, and he will not see any action. Gene Strandness will miss the game also but not because of injuries. He is taking a medical school exam on Saturday and that will last all day.

right, who knows? . . . Congratulations to Lowell Knutson, John Jurkovich and Gene Strandness for their outstanding backfield play last Saturday . . . Also to Jack Carbone and John Waldorf in the line . . . Welcome back, Stacy, it's good to see your beaming face on the Campus again . . . Well, that's 30 for today . . . Hurry up and get well, Finkle.

PARKLAND BARBER SHOP
MARSH and KNUDTSON

FOUNTAIN PEN REPAIRS
QUICK SERVICE

Mobley's Jewelry
Garfield Street — Parkland
REASONABLE RATES
Under New Management

PARKLAND MEN'S SHOP
DON STRANDEMO
Garfield Street Parkland

PARKLAND AUTO PARTS
IN CONNECTION WITH

Parkland Fuel Oil & Service Station
GRanite 8112 Parkland, Wash.

SEE OUR SCHOOL TOGS

For Men and Women!



Got a date? Want to go to the game?
But the car won't work? . . . See

LEWIS RICHFIELD SERVICE

GARFIELD AND PACIFIC

GR. 8688

The DONUT BAR

TAKE A DOZEN TO THE GAME

Parkland GR. 9950

Tacoma HI. 3081

Committees Are Selected At LSA

Committee members were announced at the Lutheran Students Association meeting Sunday evening in the Student Union auditorium. These committees were selected by the LSA council to help carry out the ideas and functions of the club.

Those chosen to work on these committees are as follows: Program, Lowell Knutson, chairman; Helen Hedin, Beverly Wigen, Marcus Reitz, Les McKay, Rolf Lunde, and Dorothy Keebler.

Membership, Dolores Lanseth, chairman; Marcia Etzel, Milt Hanson, Olive Isaksen, Helen Jensen, Val Johnson, Ronald Buchholz, Naomi Roe and Luther Steen.

Financial, Ralph Hatlen, chairman; Del Zier, Mary Larson, Chauncey Christopherson, Arne Helgeson, Otto Reitz, Betty Eldey, and Doris Johnson.

Spiritual Growth, Herb Neve, chairman; John Rose, Henry Erickson, Elaine Eide, Eleanor Hanson, Audie Aakre, and Dorothy Martenson.

Publicity, Evelyn Peterson, chairman; Helen Enger, Mahlon Read, Jens Knutson, Carolyn Johnson, Emily Sholseth, Luella Vig, Roberta Schoessler, Walt Braafladt, Joan Gardner and Barbara Rommel.

Homecoming Float, Carol Rose and Janice Johnson, co-chairmen; Jerry Bender, John Dobos, Chuck Foster, Dave Wahlstrom, Nan Aageson, and Roy Virak.

The Spiritual Growth committee will take charge of the program at the regular meeting Sunday evening. An invitation is extended to all students on the campus to join this club. LSA meets every Sunday evening at 6:30 in the Student Union auditorium.

Patronize Your Advertisers

**98th ST
HARDWARE
STORE**

**C. O. Lynn Co.
MORTUARY**
717 TACOMA AVE. Phone MAIN 7745

Society To Hear Missionary Team

Miss Inga Kjos and Mr. John Showalter, a missionary team from the World Mission Prayer League, will be presented at the Wednesday meeting of the Mission Society at 7 p.m., Merlin Zier, president, announced.

Mr. Showalter, who recently returned from mission work in Bolivia, South America, will be replaced by Miss Kjos, an accepted candidate.

Marcus Reitz, solicitor for Community Chest funds, revealed that the Mission Society had received contributions from over 80% of its members by the first of the week.

Mission Meeting Held on Wed.

Adolph Kohler was elected vice-president of the Mission Society at the last meeting held in the old Chapel, October 5, when Al Schedler's report on the New Guinea missions was the featured part of the program.

That the men at the Pierce county jail appreciate the type of program the Mission Society sponsors there was announced by Bill Williams, chairman of the service, who explained that an effort was made to make the program correspond with regular Sunday morning services held in Lutheran churches.

Al Kluth played a waltz composed for PLC by two of the men at the jail who had included it in a letter thanking the Mission Society for the Sunday evening services.

Merlin Zier, president, announced that arrangements were being made to have three Bolivian missionaries on the next program, which will be October 19.

CAMPUS DEVOTIONS

"Yielding Our Lives to Christ," was the theme of a talk given by Neil Livingston at Campus Devotions Thursday. He stressed the fact that we must yield our lives to Christ personally and individually if we want to live spirit-filled lives.

Irene Christensen was elected as representative to the Inter-club Council.

Did you know that if all of the PLC students who sleep in class were placed in one long horizontal line they would be more comfortable?



"The fans have paid eighteen thousand dollars in amusement tax today — so get out there and amuse 'em!"

L.D.R. Convention Held in SUB Sunday

In the Student Union Building, Sunday, October 23, the L.D.R. of Pacific Lutheran College will be hostess to the Lutheran Daughters of the Reformation Circuit Convention. Registration will begin at 2:30 and the opening session is slated from 3:00 to 5:00 p.m. Dinner will be served at 6:30 in the College dining hall; tickets available to guests are \$1.

The program will include a missionary message given by Miss Ruth Lovas, of Denny Park Lutheran of Seattle. She is a missionary to South Africa. Rev. Clyde Grimstuedt of Hope Lutheran in Seattle, will give the Bible study. Included will be a round-table discussion, "The Washing of Regeneration," lead by Alfred Kjoistad.

Also offered on the program is special music and a film, "Eyes for Action." The offering will go for the Christian Education Appeal. A prize will be given for the largest group in attendance. PLC delegates are Elaine Eide and Charlene Mykland.

Debaters Vieing For Team Honors

For the past two weeks the debate team has been competing amongst themselves to vie for positions on the team. Mr. Karl has divided the prospective debaters into two squads, and in the afternoons some very interesting debates have taken place in Old Main and downstairs of the library. Donald Graham and Lou Innerarity are in charge of the groups.

Pity the poor absent-minded prof who lectures his students on the necessity of bringing their mental tools to class, and then realizes too late he forgot to bring his own lecture notes.

Complete Banking Facilities in the nearby Lincoln District



LINCOLN BRANCH
3808 South Yakima Ave.
Member Federal Deposit Insurance Corporation

Raymond Electric Company

Engineers - Contractors
813 Pacific Ave. BR. 1712

Mrs. Frisbie's BAKERY

For Good Bakery Products
710 So. 38th St. GA. 7591

FRANWELL'S

Waffles
our specialty
772 BROADWAY

When You Want Office Supplies

C. Fred Christensen
STATIONER
913 Pacific Ave. BR. 4629
Tacoma, Wash.

ON THE CAMPUS
For Your Convenience . . .

- Personal Stationery
- Programs
- Christmas cards imprinted
- Tickets, etc.
- We print your Mooring Mast

LaCrosse Printing Company
On the Campus, Old Chapel Bldg.

If you like Pastry, you'll like Harry's . . .

S.U.B. SNACK BAR

TRY FLETCHER'S — *The Vets Do*

Groceries -- Meats -- Vegetables
Frozen Foods

FLETCHER'S MARKET

FREE DELIVERY Granite 8550

THREE-DAY SERVICE
on Laundry, Cleaning and Repairing

24-HOUR SERVICE AT PLANT

Fashion Cleaners

PICK UP and DELIVERY

GA. 3372

3820 Yakima

Appointments Announced

Helen Hedin, president of the College Press Club, has announced appointments to committees of permanent and regular status in the organization.

Phil Falk will head a publications committee consisting of Ken Storaasli, Jon Ericson and Barbara Jonson.

The legal committee is composed of Bob Ericson, Lou Innerarity and Carol Schuler.

The publicity committee is made up of Dorothy Froomfield and Jo Ann Nelson.

The social committee, headed by Kathy Reule, holds the names of Bob Ferguson and Marlene Schwenke.

Float committee for Homecoming will be chaired by Ken Storaasli, and Edna McCall and Jon Ericson will serve with him.

Patronize Your Advertisers

NEAL E. THORSEN

TRICKS - JOKES - MAGIC

Costumes - Tuxedos - Serpentine
926 1/2 Broadway MA. 4861

Tune In:
Your Own
CAMPUS
RADIO THEATRE

- COLLEGE OF PUGET SOUND
- PACIFIC LUTHERAN COLLEGE
- STADIUM HIGH
- LINCOLN HIGH
- SUMNER HIGH
- PUYALLUP HIGH
- VISITATION VILLA
- FEDERAL WAY HIGH
- CLOVER PARK HIGH
- ST. LEO'S HIGH
- ST. JOSEPH'S COLLEGE of NURSING

Every Wednesday
During School Year
6:30 P.M.
1360 ON
KMO YOUR DIAL
*Krebroadcast — KTBI
9:30 A. M. Saturday

Sponsored by

Your TACOMA CITY LIGHT



Buy From The Mooring Mast's Advertisers

They Support Your Paper And Your School - Buy From Them