

# The Mooring Mast

MERRY  
CHRISTMAS

VOL. 27

PUBLISHED BY THE STUDENTS OF PACIFIC LUTHERAN COLLEGE, FRIDAY, DECEMBER 9, 1949

NO. 10

## Christmas Concert Scheduled For Sunday

### Northwest Press Group To Meet Here In 1950

Innerarity Is New Prexy of Journalists; Conference To Expand Membership Area

Pacific Lutheran will serve as host to the Northwest Intercollegiate Press Conference when they hold their 1950 session here next fall. The announcement was made from Ellensburg, Washington, last Saturday soon after the conference delegates at the 1949 conclave elected to journey to Parkland for their next meeting.

#### Editor Is New President

The delegates at this year's Central Washington College meeting elected Lou Innerarity as the new president of the NIPC, and voted to consider a constitution at the 1950 meeting. The constitution will be drawn up by the newly-elected group of officers that consists of Innerarity; Loretta Colombi, vice president, EWCE; Lois Wasmund, secretary, CPS; Sally Lee Evans, secretary, Whitworth; and Al Magnuson, treasurer, WWCE. This group will meet to draft the articles on a date which will be set for this coming spring semester. The new president is considering Yakima, Washington, as a prospective meeting

### Religion Leads Press Coverage

PLC's student newspaper has printed 2,880 column inches of material since the beginning of the year. Not considering the general student news that has taken a large amount of space and the sports which usually holds its own in printed copy per issue, this is the way the paper stands insofar as departments are concerned: Religion, 123 inches total, 13.66 per issue average; Speech, 108.5 total, 12.05 average; Drama, 89 total, 9.88 average; Faculty, 87 total, 9.66 average; Education, 49.5 total, 5.46 average; Music, 48 total, 5.33 average.

The other departments that are not listed fell below the lowest total recorded here. It is evident that those departments that send in their copy to the paper are the ones who dominate the paper from a departmental standpoint. A renewal of the paper's request for information from all groups has been sent to clubs and departments so that a wider representation of student activities may be printed.

### ICC Wants To Hear The Students' Gripes

The subject of campus questions, suggestions, and gripes was discussed at the regular meeting of the Interclub Council Monday evening.

It was pointed out by the chairman, Gene Strandness, that the Interclub Council, as well as the Student Council, is at all times open to suggestions and other constructive criticism dealing with your student government. It was urged that any having complaints, air them to one of the Council's representatives, because that is the surest way of getting fast action on the matter. Speaking for Interclub Council, Strandness stated, "If a problem is worthy of consideration or discussion by anyone within the Student Body, it is certainly worthy of the Council's consideration."

place for the conference officers.

#### Conference Is Expanding

The NIPC, in existence for only a few years, is expanding its scope of membership to include schools from Oregon, Idaho and Canada as well as Washington. The PLC delegates that attended the Ellensburg meeting praised the conference for its excellent results through cooperation and serious application to business. Ken Storaasli, Phil Falk and Helen Hedin represented PLC and were more than satisfied with the helpful information and suggestions that were offered by the delegates. A radio section was instituted at Ellensburg and will be further developed at the 1950 session. Prof. Theodore Karl, associate of Ray R. Morgan advertising company and the Columbia Broadcasting System, will make arrangements for a full program for those persons at next year's conference who are interested in radio as a field of information.

#### Group Has Worthy Purpose

The conference delegates have declared their purposes to be generally as follows: To seek to improve their publications in the interests of the students represented; to cooperate with as many other student newspapers as possible and feasible in order to meet the common and outstanding problems of publishing student publications; to pursue the propagation of the truth in news reporting on a basis of reporting facts of occurrence without malice, and without fear or favor.

#### CPS To Cooperate Next Year

Lois Wasmund of CPS, newly-elected secretary of the conference, actively supported the PLC bid for the conference and offered the assistance of the staff of the Trail, CPS publication. A conference between members of the MM, Saga and Trail staffs is contemplated for the near future to work out tentative plans for coordination. Innerarity praised Miss Wasmund for her support and for her ability as a delegate well qualified to represent her school to its best advantage.

Joint campus sponsors of the conference will be the staffs of the Mooring Mast and the Saga, and this group will announce information on the conference plans as they progress.

### Roe To Confirm Class Of 11 This Sunday

Confirmation of eleven PLC students and baptism into the Christian faith for five will be held Sunday evening at 8 o'clock in Trinity Lutheran Church, Pastor Kelmer Roe, instructor of the class, announced this week.

"That students each semester desire to prepare themselves for church membership indicates that the college functions as an arm of the church. Our school provides the atmosphere and the training which leads men and women into the Kingdom of Christ," Pastor Roe commented.

Faculty members and friends are invited to attend the service with those who are communicant members, welcome to partake of Holy Communion with the confirmands.

This group is the third college confirmation class to have completed instruction this year with 12 having been received into the Lutheran church last January and a second group of 10 in May.

S. C. Eastvold will speak at the ceremony while Pastor Roe will conduct the rites of baptism and confirmation, and Dr. E. B. Steen will lead the Liturgical service.

Lowell Wolhueter will sing "O Bread of Life from Heaven" and Mrs. Malmin will be the organist. Both were elected by the confirmands as were the ushers and candlelighters, who will be Ernest Cementina and Bert Wells.

Sue Carpy, Ellen Davis, Ed Dorothy, Henry Hazel, Anita Hellbaum, Arnold Kjesbu, Gene Lundgaard, Frederick Rapp, Ivan Schaffer, Dick Weathermon, and Donald Williams, the members of the class, chose as sponsors, Professors J. P. Pflueger and P. E. Hauge, Marv Harshman and Bert Wells.

The next class session will start February 21 and will be concluded after 10 sessions by a confirmation service on May 7. In the class which will be held at Pastor Roe's home between 7:45 and 9:00 p.m. each Tuesday, the principal Bible teachings will be emphasized.

"It has been one of my chief joys to meet the confirmation class particularly because they have been so loyal in attendance," Pastor Roe said.

### Audience To Participate In Songs, Several Instrumental Groups Set

With the Choir of the West, the Chorus, band and orchestra of PLC, and the Messiah Lutheran junior choir participating, the 1949 annual Christmas Concert will be presented Sunday

afternoon at 4 o'clock in the Memorial gymnasium, Gunnar J. Malmin, choral director, announced this week.

"We are expecting to have again a crowd of 2,500 attend this event which has been, and will be once more, an inspirational event for everyone participating," Director Malmin stated.

Participants in the program, it can be added, will number well over two thousand because in addition to several numbers by organized and prepared choral and instrumental groups, the audience will sing a few Christmas carols during the concert.

Immediately after the concert a Christmas silver tea will be given in the Student Union by the PLC Women's Dormitory Auxiliary No. 2. Everyone is invited.

Following two numbers by the band and the processional, "From Heaven Above," by Luther, the Messiah Lutheran Junior Choir will present two numbers, the first by Mozart and the second a Polish carol.

"Today There Is Ringing," by Christiansen, will be sung by the chorus as the first of four numbers by that group. Together with the Choir and orchestra, members of the chorus will sing another group of Christmas selections.

"Christmas Fantasy," by the band, and "The First Noel," by the audience, will precede a reading of the Christmas Gospel and the offertory. During the offertory, the proceeds of which will help buy new gowns for the Choir, the orchestra will play the "First Movement, Second Symphony," by Haydn.

Before the closing Benediction, the Choir of the West will sing a group of numbers and the three choral groups will combine to present the final four selections.

In what could be called a dress rehearsal for the concert, the Choir chorus and orchestra traveled to Fort Lewis last Sunday evening where the groups performed individually and then in the camp Chapel, together.

"In the formal opening of one new club headquarters at the Fort, the Choir sang to an exceptionally appreciative and accomodating group, and was called back after singing for 45 minutes, for an encore," Mr. Malmin reported.

Harlem G. Moen, band and orchestra director; Dora Berg, art director; and Milton L. Nesvig, manager, worked with Gunnar Malmin in their respective capacities to produce the concert.

The concert will be broadcast direct from the gym during the program and transcribed again Christmas eve.

### D.P.K. Gives Dinner; Holds Open House

The D.P.K. is sponsoring a formal Christmas banquet for the girls who are boarding students on December 14th at 6 p.m. Dr. Strunk will be the guest speaker. A program is being planned.

On Sunday, December 11, there will be open house in the girls' dorm from 1:30 to 3:30 p.m.

### Organ Party Held Early This Week

The Organ Guild held their Christmas party earlier this week in the Student Union Building.

After a short business meeting, Christmas musical selections were given by Helen Hedin, Carol Sletto and Evelyn Peterson on the Baldwin organ.

The party progressed to the home of Miss Eleanor Hellbaum where refreshments were served.

Those who worked on the refreshment committee were Duane Fods, Joyce Larson, Eleanor Hellbaum and Violet Kluth.

### PLC Places High In Portland Tourney

The three-man squad of Donald Graham, Lou Innerarity and Jon Ericson returned to the PLC campus in the wee small hours of Wednesday morning from the second annual Town Meeting Tournament sponsored by Vanport College in Portland, Oregon.

Lou Innerarity was the winner of the third place trophy that has been added to the squads' brass section. First and second place went to the U. of Washington with Innerarity missing second place by two points and with Don Graham only one point behind third place. Jon Ericson followed four points behind Graham to tie with Lou Gerhardt of P. U. for fifth place. With a low score as the goal of all contestants the ratings were finally determined as follows on a basis of 40 as a minimum and 120 as a maximum: Innerarity, 58; Graham, 59; Ericson, 63.

#### Second in Sweepstakes

PLC placed second in the sweepstakes awards with 180 total points for three contestants as against 166 total for the University.

The contest took place before various types of audiences such as high school, college and civic groups. PLC speakers performed before Kiwanis, Rotarian, Optimist and Lions clubs in addition to appearances on local radio stations in Portland.

### 'Deck The Halls' Is Lute Theme Tonight; AWS To Party Afterward

Tonight is the night we "deck the halls."

After the decoration of the school, sponsored by Delta Phi Kappa, the Associated Women Students is sponsoring a Christmas party.

Immediately after dinner everyone is asked to join in decorating the buildings. Joan Soper, general chairman, announced that the following are chairmen in charge of the different buildings: Vern Fink and Evelyn Mikkleson, co-chairmen, Main Hall; Milt Fuhr and Marcia Etzel, co-chairmen, Chapel; Ed Dorothy and Edna Haglund, co-chairmen, Library; Howard Shull and Lillian Leikauf, co-chairmen, SUB Recreation Room; Jim

Williamson and Jody Triolo, co-chairmen, SUB Auditorium; Johnny Leque, chairman, Dining Hall. You will be on one of these committees. Watch the bulletin board in the main hall for a list of the committees.

Work comes before play. After the school is decorated, everyone is invited to the A.W.S. Christmas party in the SUB. There will be something of interest for everyone. Santa will be there, a program has been planned, there will be a door prize and refreshments will be served.

General chairman is Glenna Nelson with Mary Lynn Mykelbust handling the program and Norma Johnson in charge of the refreshments.

Merry Christmas, Happy New Year from the Mast, Saga Staffs



## The Mooring Mast

Published every Friday during the school year by students of Pacific Lutheran College.  
Entered as second class matter, October 2, 1925, at the Post Office at Parkland, Washington.  
Office: Student Union Telephone: GRanite 8611  
Subscription price—\$1.50 per year

Printed on the Campus by La Crosse Printing Company

EDITOR ..... LOU INNERARITY  
ASSISTANT EDITOR ..... MARLENE SCHWENKE  
BUSINESS MANAGER ..... PHIL FALK  
ASSISTANT MANAGER ..... BOB FERGUSON

### Editorial Staff

General News: Carol Schuler, editor; Beverly Allen, Don Breimo, Helen Enger, Jon Ericson, Harriet Olson, Alan Hatlen, Barbara Jonson, Steve Kennedy, Stan Kvern, Glenna Nelson, reporters.  
Features: Glenn Clark, Blanche Kilmer, co-editors; Joan Gardner, Bob Johnson, Shirley Molter, writers.  
Sports: Bob Brass, editor; Don Gannon, Bob Ferguson, Jim Kerns, Luther Kroenke, Paul Templin, reporters.

### Business Staff

Advertising: Bob Gregorson, Jo Ann Nelson.  
Circulation: Marian Cummings, Jo Friday, Barbara Warner.

## A Christmas Present

The spirit of Christmas has pervaded the Mooring Mast office to the extent that the editor will spare his readers from the usual editorial and use the space for copy instead. Merry Christmas and a happy New Year to the PLC family from the Mooring Mast.—LAI.

## As We See It

### A Tawasi Feature

How do you spend your spare time—those intervals when your girl has a class and you are too broke to buy a cup of coffee? The next time you have a few minutes to kill, why not drop over to the library and examine the new Browsing Shelf there. In this collection of books selected by our librarians you are sure to find a novel that will give you a few hours of pleasant reading or a non-fiction book that will add to your knowledge and enjoyment of your hobby, your favorite subject, or your future vocation.

In addition to the books in this display, our library has over two hundred periodicals to appeal to almost every interest and taste. Besides the magazines of general interest, such as Life and the Saturday Evening Post, there are many specialized publications for those who are interested in art, fashions, economics, chemistry, languages, religion, and so on down a long and varied list. A few minutes each day—minutes that would otherwise be wasted—can profitably be used in just browsing around. This is a good way to become acquainted with the whole library and with those technical and professional publications that will be valuable to you in your future career. It is an easy way to get an education too. Reading an article or a chapter in a book you are just looking through will broaden and deepen your knowledge and outlook without the mental strain that comes with cramming for exams.

If in your browsing you should be unable to find material on the fields in which you are particularly interested ask one of the librarians for assistance. You will find the library staff cooperative and happy to help you whenever they can. Incidentally, while you are in the library, take a

look at the attractive display on the bulletin board near the door. These displays point out some of the many services that our library offers us. Let's use them.


## Mission Society Will Broadcast

A radio program sponsored by the Mission Society is expected to be broadcast some time next week, according to Bill Williams, program director, who reports that preparations for the first project have been completed.

To open the broadcast, the Mission Society choir will sing, and in addition, a number of musical selections including Bach's concerto for a double violin and a vocal solo will be presented. The speaker will be Bob Thomas, a junior. After a trio number, a poem and a carol by the choir, the program will be closed with a prayer.

The Mission Society undertaking will be broadcast monthly in thirty minute programs over station KTNT-FM in Tacoma. A definite time schedule will be arranged and announced later.

### Patronize Your Advertisers



**PIPER FUNERAL HOME**  
phone HILLSIDE 8479  
5436 So. Puget Sound Ave.

### Mrs. Frisbie's BAKERY

For Good Bakery Products  
710 So. 38th St. GA. 7591

### SEARS

Roebuck & Co.  
1148 Broadway BR. 4321

When You Want Office Supplies  
**C. Fred Christensen STATIONER**  
913 Pacific Ave. BR. 4629  
Tacoma, Wash.

## Sohos To Attend Oregon Spur Meet

In continuance of their busy program of service to the students and the school the Sohos have selected four of their membership to attend the Spur Regional Convention at Linfield College, McMinnville, Oregon, this weekend. Those making the trip are Ruth Moe, Jo Ann Nodtvedt, Margie Anderson, Evelyn Peterson, and Miss Blomquist, the club adviser. Sohos are candidates for membership in the national organization of Spurs.

### To Serve at Concert

The Sohos will usher at the Christmas concert that will be held in the Memorial Gym this Sunday at 4:00, as one of their many activities of the semester thus far.

## Snow Tolo Success

Soho's Snow Tolo was a success with 16 Soho members and their dates attending. The event took place last Saturday evening at the Towers restaurant. The tables were decorated with fir boughs, snow, and candles to carry out the snow theme, and a steak dinner with all the trimmings was served.

Chaperones for the affair were Mr. and Mrs. David Seligh, and the club adviser, Miss Grace Blomquist and her escort, Mr. Harry Adams.

The club is also assisting in the sale of Christmas seals and they sold ice cream bars in the girls' dormitory this last week.

Evelyn Peterson, president, and four other members with Miss Blomquist plan to attend the Regional Spurs convention at Linfield College Friday and Saturday of this week. Spurs is the national sophomore honorary, and the PLC Soho honorary has been invited to attend the convention.

Several members of the GPS Spurs and their adviser paid the club a visit at the last regular meeting.

**PARKLAND BARBER SHOP**  
MARSH and KNUDTSON

**PARKLAND MEN'S SHOP**  
DON STRANDEMO  
Garfield Street Parkland

**DANIELS HARDWARE**

★  
ON THE HIGHWAY CORNER  
PACIFIC AVE. & GARFIELD

You'll Like to Bank in the Nearby Lincoln District

The Friendly  
**PUGET SOUND NATIONAL BANK**  
of Tacoma

LINCOLN BRANCH  
3808 South Yakima Avenue  
Member Federal Deposit Insurance Corporation

## New Vocation



Palmer Weber Photo  
Tuberculosis patients frequently take advantage of rehabilitation services at the sanatorium to train for new and interesting occupations, as the man above is doing. Christmas Seals help finance vocational training and rehabilitation projects.

### BROG IS VOTED

At the last meeting of the freshman students, the class voted to accept the resignation of the Interclub Council representative, Don Breimo.

Bob Brog, Seattle, was elected to the position after an election held among the students present.

**98th ST HARDWARE STORE**

**Centre Cleaners**  
FOR ALL CLEANING NEEDS  
Parkland Centre Building  
One block from Campus  
Carl and Ingrid Fynboe, props.

**Clover Creek Market & Lockers**  
GROCERIES - MEATS  
Brookdale GR. 8013

Come In and See Our Christmas Ideas  
OPEN THURSDAY & FRIDAY EVENINGS  
**Stella's Flowers**  
Table Arrangements and Winter Corsages  
Parkland Centre GRanite 7863

## PARKLAND AUTO PARTS

IN CONNECTION WITH

**Parkland Fuel Oil & Service Station**  
GRanite 8112 Parkland, Wash.

## SEE OUR SCHOOL TOGS

For Men and Women!

EST. 1884  
**Washington HARDWARE CO.**  
918-24 PACIFIC • 923 COMMERCE  
**SPORTS SHOP**

## Parkland XXX

Featuring the...  
**Merchants Lunch, 50c**

STUDENT MEAL TICKET  
A \$5.50 Value for \$5.00

Two Blocks North on Mt. Highway



## Sale On Seals

The 43rd annual Christmas Seal sale is now underway in the United States.

The 1949 seal depicts a modern dove in flight and was designed by Herbert Meyers of Leonis, New Jersey. The work won a first prize in a nation-wide contest sponsored by the Society of Illustrators.

Funds for the work that is being done is largely raised through the sale of Christmas seals. The Mobile Chest X-ray unit operated by the Pierce County Health Department, which was on the campus this week, is maintained partly through the sale of Christmas seals. This is part of a national program to stamp out TB.

### Patronize Your Advertisers

## NEAL E. THORSEN

TRICKS - JOKES - MAGIC

Costumes - Tuxedos - Serpentine  
926½ Broadway MA. 4861

## C.O. Lynn Co. MORTUARY

717 TACOMA AVE. Phone MAIN 7745

YOU'LL LIKE  
**JIM'S BARBER SHOP**  
Airport and Pacific

The CLEAN Place to Buy and Store Your Meat at Lower Prices...

## PARKLAND LOCKERS

A. J. (Slim) STERN  
11012 Pacific Ave. GR. 7111



# Gladiators Travel To Oregon For Three Games

## From the Bench . . .

By Brass

This week's issue will be the last issue of the MM this year, so this writer is going to climb out on the proverbial "limb," and take his crystal ball along with him to see what's in store for the various "Bowl" games in the nation this New Year's Day.

The "Granddaddy" of all Bowl tilts is the Rose Bowl, so let's take a look at this contest first. California plays host to Ohio State at Pasadena and it looks as though the Big Ten team will come out on top, O.S.U. 21, Bears 7.

North Carolina's Charley "Choo-Choo" Justice, should be the star of the Sugar Bowl classic at New Orleans on January 2; he will lead his team to victory over Oklahoma by a score of 14 to 0.

The annual East-West Shrine game will be a hard fought battle from start to finish; a galaxy of stars from across the nation tend to make this contest one of the best in the country. The crystal ball is getting fuzzy and says that this will be a tough one, but the East will triumph by a score of 13 to 7. As for the other Bowl tilts, the crystal refuses to push this scribe any farther out on that limb: it isn't too sturdy now.

### Saints Lose to Lutes

You can't comment on a game unless you see it, so all we'll do in this column is to congratulate the team and wish them luck on their road trip. We'll be pulling for you and waiting your return to the home floor.

The Harsh-men left Thursday for a three game schedule in which they will meet Linfield on Thursday evening, Pacific University on Friday, and Southern Oregon on Saturday, after which they return home to tangle with CPS on Thursday, December 15.

### SPLINTERS. . .

Another honor given to Jack Carbone is that of honorable mention on the A.P. Little All-American team . . . That's 30 for today . . .

A MERRY CHRISTMAS, PLEASANT VACATION, AND A HAPPY NEW YEAR TO EVERYONE FROM THE SPORTS STAFF.

## Lutherans Thrash Martins; 52-29

Sparked by Duane Berentson, a University of Washington transfer, the Gladiators crashed into the win column last Saturday with a 52-29 trouncing of the St. Martin's Rangers.

The non-conference tilt, played in the Memorial gymnasium, evened up the budding Lute basketball record to one win and one loss. The Harshmen dropped the season's opener to Portland University, 53-48.

Berentson was torrid the first half, dropping in 12 counters. Although limited to two points in the final stanza, the Anacortes ace was high for the evening with 14. Gerald Hefty, Portland sophomore, carried the scoring load in the second half with a handsome 11 point contribution. He was blanked in the initial period.

The Lutes took plenty of time getting started. After six minutes of play the score stood at 3-0 in favor of the Rangers. However, at this point Harry

McLaughlin dropped a free throw and Berentson dunked a field goal. The Gladiators quickly gained the lead and were never headed. The half time score was 23-15 in the Norsemen's favor.

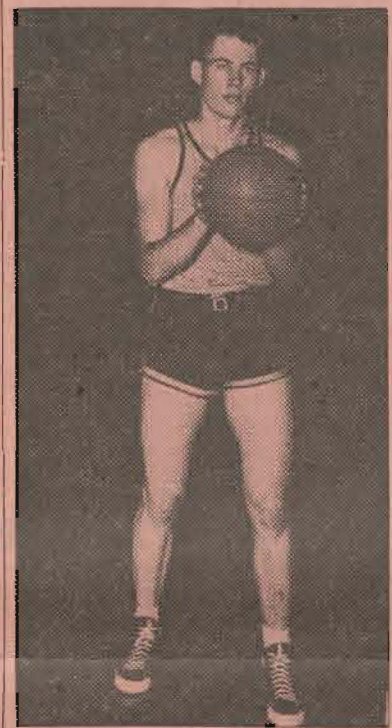
The Lutes also won the Jayvee\*contest 53-40.

## Norse, Loggers Clash Thursday

In the first of four all important basketball games the Gladiators and the Loggers of Puget Sound meet next Thursday night at the new CPS gymnasium. This game counts only in city league standings, but both teams will battle with all their strength to win it.

The Loggers have lost only Bob Fincham from last year's squad, so are expected to win quite a few of their games this year. Rod Gibbs, 6-6 center, and Bob Rinker, 6-4, are the two tallest men on the team and the Loggers' attack works around them. Bob Angeline, Dick Brown and Bill Stivers are three of Coach Heinrick's stars, so it promises to be a thrilling game. Incidentally, the new gym is located on South 11th street at the end of the campus.

During Christmas vacation the Gladiators will play three games, and two of them are at home. December 17, Saturday after vacation starts, Pacific University comes here in a return engagement. Then on December 20th the Lutes travel to Olympia to do battle with St. Martin's, paying back a visit when they played here last week. On December 28, Idaho State will bring its team here in hopes of defeating the Glads. This is the first time these two teams have met in any sport and it should be an interesting game. So all you students that do not go home for the holidays remember these two home games and come out and root for the team.



GERRY HEFTY, one year letterman from Portland, Oregon, will be carrying a good share of the load in the coming basketball season.

PLC 68, LINFIELD 38

Yesterday morning after Chapel the basketball team left for its four-day trip through Oregon. Last night they met the Linfield squad at McMinnville. Linfield is one of the dark horse squads in the Northwest Conference this year and not too much is known about them. Tonight the team will play the strong Pacific University quintet at Forest Grove. Last week they lost a close game to CPS by a score of 47-42. They are one of the favorites to win in their conference this year. Tomorrow night, the Gladiators meet their old rivals the Southern Oregon Red Raiders, at Ashland. Last year the Lutes defeated the Red Raiders pretty easily in a game at Parkland. This game is also interesting in that the rivalry dates back to the last three football games.

The team will spend the first two nights at Portland, and on Saturday night at Roseburg, Oregon. They will return to Parkland Sunday evening. Then on Monday, back to the old grind of steady turnouts for the next three days, preparing for their first big important engagement with our cross-town rivals, College of Puget Sound.

After a rough scrimmage last Tuesday night Coach Harshman picked a 12-man traveling squad for this trip, consisting of: Harry McLaughlin, Fritz Rapp, Gene Lundgaard, Bert Wells, Lee Amundson, Glenn Huffman, Del Schafer, Duane Berentson, Jack Johnson, Earl Hagen, Willie McLaughlin, and Gerald Hefty.

The team must have played superb ball in defeating Linfield last night at McMinnville, Ore. Harry McLaughlin was high point man with 19.

**Raymond Electric Company**  
Engineers - Contractors  
813 Pacific Ave. BR. 1712

Tune In:  
*Your Own*  
CAMPUS  
RADIO THEATRE

- COLLEGE OF PUGET SOUND
- PACIFIC LUTHERAN COLLEGE
- STADIUM HIGH
- LINCOLN HIGH
- SUMNER HIGH
- PUYALLUP HIGH
- VISITATION VILLA
- FEDERAL WAY HIGH
- CLOVER PARK HIGH
- ST. LEO'S HIGH
- ST. JOSEPH'S COLLEGE OF NURSING

Every Wednesday  
During School Year  
6:30 P.M.  
1360 ON YOUR DIAL  
**KMO**  
\*Rebroadcast - KTBI  
9:30 A. M. Saturday

Sponsored by  
*Your* TACOMA CITY LIGHT

**The SILVER and GOLD**  
AN INDEPENDENT NEWSPAPER  
Official Publication of the Associated Students of the University of Colorado  
Here We Go Again . . .  
Editors, Business Managers Selected For

Meeting the gang to discuss a quiz—a date with the campus queen—or just killing time between classes—Owen's Sandwich Shop at the University of Colorado in Boulder is one of the favorite places for a rendezvous. At the Owen's Sandwich Shop, as in college off-campus haunts everywhere, a frosty bottle of Coca-Cola is always on hand for the pause that refreshes—Coke belongs.

Ask for it either way . . . both trade-marks mean the same thing.

**5¢**

**Coca-Cola**  
REG. U.S. PAT. OFF.  
"Coke"  
REG. U.S. PAT. OFF.

Owen's Sandwich Shop, Boulder, Col.  
BOTTLED UNDER AUTHORITY OF THE COCA-COLA COMPANY BY  
THE COCA-COLA BOTTLING COMPANY, TACOMA, WASH.  
© 1949, The Coca-Cola Company

ANNOUNCEMENT  
VACATION ENDS on the third of January instead of the second. The second winds up as an extra day of vacation this year.  
NEXT ISSUE of the Mooring Mast will appear on the 6th of January. All copy must be in the Mast office prior to 12 noon on the 3rd of January.

ON THE CAMPUS  
For Your Convenience . . .  
**LaCrosse**  
Printing Company  
On the Campus, Old Chapel Bldg.

**MARGIE'S Beauty Salon**  
PARKLAND CENTRE  
GRanite 7931

Permanent Waves  
\$6.00 up  
Includes Hair Styling, Shampoo and Hair Cut

For Christmas give Him a gift from a man's store . . .  
**KARL'S MEN'S WEAR**  
940 PACIFIC MAin 2828

Floor Coverings and Installations  
Window Shades -- Venetian Blinds  
Sherwin Williams Paints

**SUNSET FURNITURE CO.**  
In Parkland Shopping Center GRanite 6582

THREE-DAY SERVICE  
on Laundry, Cleaning and Repairing  
24-HOUR SERVICE AT PLANT

**Fashion Cleaners**  
PICK UP and DELIVERY  
GA. 3372 3820 Yakima

TRY FLETCHER'S — *The Vets Do*  
Groceries -- Meats -- Vegetables  
Frozen Foods

**FLETCHER'S MARKET**  
FREE DELIVERY GRanite 8550



## 1950 Line-up Of Evergreen Teams

By Jim Kerns

For the fans who are interested in what the other Conference teams have to offer this year we have attempted to outline the prospects of the seven teams that, along with us, make up the Evergreen Conference.

Whitworth, under Jerry Stannard, has a good ball club. Sam Adams, Clyde Matters and Earl Mortlock are the outstanding returning lettermen. Ed Kretz of football fame is another returning guard who will aid the Pirate cause.

W. B. (Red) Reese is coaching his sixteenth season at Eastern. A veteran team is out, led by Dean Nicholson, all-conference '48-'49; Dick Eicher and Gene Burke, both 6 feet, 4 inches, and a host of letter winners.

Bill McDonald and his Vikings from Western will upset a few apple-carts this season. "Alpine" Dick Ravenhorst, 6 feet, 6 inches; Jerry Starr and Stan Peterson lead another experienced outfit into the conference struggle.

Jack Pomfret, U.B.C. mentor, has a ball club that could easily surprise the experts in the current campaign. Nev Monro, 6 feet, 5 inches, along with "Big" John Forsyth and Art Phillips, both 6 feet, 4 inches, give the Thunderbirds backboard strength as well as scoring ability.

St. Martin's has a ball club that could come around and win some ball games for Coach Nady this season. Dean Dion, all-conference and high scorer last year, plus Bill Sullivan, transfer forward, give the Martians a strong nucleus around which to build.

Leo Nicholson in his twenty-first year at Central has another high class squad. Dean Nicholson, all-conference, and Fred Peterson, high scoring forward who made second team all-conference, along with Chuck Long, who made second team for his third time add up to a top contender for conference honors.

John Heinrich, CPS mentor, has a host of lettermen from which to pick. Bobby Angeline, all-conference guard, Rod Gibbs, 6 feet, 7 inches, who garnered second string all-conference laurels, along with Dick Brown, 6 feet, 5 inches; Bob Rinker, 6 feet, 6 inches, and Bill Stivers, who played good ball last year, give the Loggers another title threat.

Only one man, Wes Saxton (PLC), is missing from last year's All-Evergreen first and second squads. For the interested fans here is a list of returning All-Conference players:

First team: McLaughlin (PLC), Luft (EWG), Dion (St.M.), Nicholson (CWC), Angeline (CPS).

Second team: Lundgaard (PLC), Gibbs (CPS), Long and Peterson (CWC).

## Light System To Be Dedicated Friday

The installation of the new campus lighting system has almost been completed, and the new campus feature will be dedicated late this afternoon in a ceremony to be held by Old Main.

Don Breimo and Rolfe Lunde are serving as the student committee for the dedication ceremony. They were appointed by the student council.

## Christmas In Other Lands Reveals Strange Customs

By Beverly Allen

"If you call on somebody at Christmas and eat nothing, you carry Christmas away from the home." This is an old Danish saying. But is applicable to every nation that observes Christmas. It is a time of elaborate feasting.

In Denmark, as in the other Scandinavian countries, the celebration comes on Christmas Eve. The poor and the sick receive supplies of food and clothing during the Christmas season. Even the cattle and sheep are given an extra portion of grain. When all the needy have been cared for, the families gather around their respective tables and eat a lavish meal. The dessert is usually a rice pudding containing one almond. People believe the lucky person who gets the almond will be the next one married.

South of the border in Brazil, despite the climate, Santa Claus, or "Papa Noel," prevails over the country, with his sleigh and eight reindeer, from December 24 until January 6. The Brazilian children not only hang their stockings up by the kitchen chimney, but they leave their shoes in front of the stove, to collect even more goodies.

Christmas in Sweden is celebrated until January 13th. The Gnome of Good Luck visits the children with gifts. Closely connected with the Swedish Christmas customs is the Lucia Queen's appearance in the church pageants and in the homes at Christmas time. This Queen of the light commemorates St. Lucia, a Christian maiden of Rome, who was burned at the stake because she would not marry a pagan. St. Lucia day is December 13th.

Christmas gifts are distributed only among the children on Christmas Eve in France. Other than that, there is a candlelight worship service and a midnight supper.

New Years Day is to France what Christmas is to the United States. St. Nicholas gives gifts to everyone: relatives, friends, tradesmen, and strangers. The greeting card custom in France is even more extensive than it is here.

The Italian Christmas is more for

the adults than for the children. Christmas Eve is a time of fasting. No meat is served, but all other foods are plentiful.

The children receive their gifts at Epiphany, on January 6, the time when the three Magi came to the manger at Bethlehem with gold, frankincense and myrrh. Benfa, a jolly but fictitious old lady, leaves gifts for the good children near a manger which the young ones construct. Bad children receive charcoal.

Finland's Christmas fir trees are decorated with apples, fruit, candy, cotton, and candles. Santa and his elves visit the children personally. Before the festivities, everyone takes a steam bath and dresses in clean clothes. Sometime between 5 and 7 a feast is enjoyed. It usually consists of boiled codfish, boiled potatoes in cream sauce, roast pig, ham, rye bread and vegetables.

On the British Isles, the English sing carols on the highways, as well as in the Churches. Westminster Abbey, St. Paul's Cathedral and the Temple Church in London are filled to capacity on Christmas Eve. The Christmas Murmurs are an interesting part of Christmas tradition. They are plays that have been presented each year for several hundred years.

No matter the day or the way in which Christmas is observed, the Yuletide is the one time of the year when nations are brought together in a benevolent spirit.

## Basketball Managers Are Competent Group

It seems only fitting and proper that the managers of the different sports should receive recognition at least one time during the year. In an earlier edition of this paper the managers of football were so recognized. Now that it is basketball season, it is the basketball managers' turn.

This year's head basketball manager is Ken Daugh, who is a sophomore from Walla Walla. This is Ken's second year as a basketball manager. He has also been a football manager for one year. Assistant manager for the varsity squad is Jim Kerns. Jim has acquired his experience through the past three years as a football manager. Taking care of the chores for the jayvees is Martin Hellberg, a freshman from Walla Walla. Mart, while in high school, lettered in varsity track for two years as a high jumper and earned one letter in boxing. This is his first attempt at managing.

Patronize Your Advertisers

## Scribes Draw Up Jan. Party Plan

The College Press Club met last night for the first time in several weeks. Previous meetings were cancelled in favor of the heavy activity schedules of a few weeks ago.

The journalists heard a resignation by Jon Ericson as ICC representative and immediately thereafter elected Bob Gregerson to replace Ericson.

Post-vacation plans of the club have been selected and a movie and party are in the offing for January. The club heard a short report on the Northwest Interscholastic Press Conference held recently at Ellensburg.

The activity of the group promises a general increase since the members have had time to overcome the initial difficulties involved with forming an organization when a considerable amount of activities were taking place.

Dr. Magnus Nodtvedt will return to the campus soon, and will resume teaching next semester.

GOOD FOODS at the RIGHT PRICES

at

# Alvstad's Market

Garfield St., Parkland

GR. 8560

Christmas  
Is  
Coming!



## JOHNSON'S DRUG STORE

CHRISTMAS GIFTS FOR EVERYONE

In Parkland Centre GR. 7333

### BAXTER'S

918 Broadway

WHERE ALL COEDS SHOP

### OAKES APPAREL

Fine selection of Gift Items, including Lingerie, Hosiery, Sportswear, Dresses, Suits, and Coats  
921 Broadway Tacoma 2, Wash.

### DILL HOWELL

WILSON SPORTS EQUIPMENT

929 Commerce MAIn 5665

### KLOPFENSTEIN'S

QUALITY IN MEN'S APPAREL

937 Broadway BR. 2236

### HAWSON'S JEWELERS

Our New Location; 918 Broadway  
Perfect Diamonds - American-made Watches  
Fine Jewelry  
Telephone MARKET 8355

### PORTER-CUMMINGS

Home for the College Man's Suits and Furnishings

936 PACIFIC

### FOUNDATION SHOP

Women's Intimate Apparel - Fine Corsetry  
Robes - Hosiery - Negligies - Lingerie  
MRS. BELLE GIES, Corsetrie  
919 1/2 Broadway BR. 9424

### Winthrop Men's Shop

784 Broadway MAIn 6635

### BUCHANAN'S SHOES

760 Broadway—Across from the Winthrop Hotel

### Andrews Women's Apparel

Andrews says Gifts should not only be Beautiful, but Practical  
Charles of the Ritz Proper House Robes  
943 Broadway BR. 2411

Your Christmas store gives you more and more!

### FISHER'S

11th and Broadway Tacoma

FOR THE IDEAL CHRISTMAS GIFT shop at

### HELEN DAVIS

917 Broadway BR. 1204

## Merry Christmas To All

For unto you is born this day in the city of David, a Saviour, which is Christ the Lord.

★

## Young's Gift Shop

Garfield Street

Parkland

# Don't Delay - - - Shop Today