

# The Mooring Mast

Join the Gang at  
Bellingham

VOL. 27

PACIFIC LUTHERAN COLLEGE, FRIDAY, OCTOBER 7, 1949

NO. 3

## Alumni Reports From Here, There, Everywhere

Miss Anna Marn Nielsen, Director of Teacher Training, recently received letters from several PLC grads.

The following items from these letters are passed on to you, their former friends and classmates:

From New York City, Hal Evans reports, "PLC is well represented at Columbia this fall—Harold Snow, Jim Turman and wife, Mary Shaw, and yours truly." He says that Harold, Jim and himself are in the department of guidance and that Mary is majoring in the teaching of English.

Apparently Hal is still interested in PLC-CPS athletic tangles as he asks to be kept posted. He reports that two of the assistants at the college are CPS grads. He sends his regards to all at PLC.

From Guam and the pen of Ted Kauth came a long and interesting letter. Anyone who wishes to read it in full would be welcome by Miss Nielsen.

Ted writes: "As yet I am not too sure where I will be teaching, or what subjects, but they have me slated for Hilaan grade school, where I would handle only 'statesiders,' but I am going to try to get in the high school so I can have some Guamanians in my classes. We are going to have a new head of education on

Guam soon, and naval government is going out, so there will be many changes and I am hoping that I will be changed to high school. Oh well, if not, I will still get to know many of them."

As a closing shot, Ted scribbled, "Three natives recovered last Thursday from laughing-convulsions when they saw me in shorts."

That is all from the old gang for the present; more news will be passed on to you as it is received. If you get a letter from any of the guys and gals please share it with the rest of us.

## Alumni Asked To Homecoming

Letters have been sent to 1200 PLC graduates and friends inviting them to the annual Homecoming festivities which will be opened Friday, October 28, with plays, a bonfire and a pep rally. A parade will start the activities on Saturday which will be climaxed in the evening by the football game with Whitworth. The coronation of the queen will be the main event of the half time celebration.

Fifty signatures will be necessary on the petitions for Homecoming Queen which will start circulating October 12. The candidates must be Juniors or Seniors and must not have been a queen previously.

There will be special church services Sunday morning at Trinity Lutheran Church. The festivities will be closed Sunday afternoon with a coffee hour and general assembly.

Making all the arrangements for Homecoming are co-chairmen Giz Rosin and Phil Falk with Dolores Lanaset and Bert Schoessler assisting.

## Mast Poll Results Are Aid to Staff

Last week the MM distributed a questionnaire with its copies, and the results were not too numerous, about 30 came back, but they were interesting in some cases and informative in others.

Among the comments were suggestions for the inclusion of a schedule of chapel speakers and activities, more humor in the paper (good humor is hard to find), and cartoons. Cartoons are more expensive than pictures and the MM's budget just can't stand any additional strain. Financial difficulties prevent compliance with the many suggestions that we put out a six-column issue instead of the present five columns.

Both extremes were touched when the Mast received poll returns that praised the editor, his policy, the reporting of the staff, and on the other hand accused the paper of being controlled by the speech department, and of printing articles that are not newsworthy while leaving out articles that are worthy of publication. Criticism is a fine thing, and we welcome it. Letters to the editor have been suggested as material for publication. Any letter so received that is reasonable (no profanity or scurrilous comment) and signed will be published. No letters have been received to date.

More student opinion was suggested, and the editors are determining ways and means of gathering such opinions as well as methods for the selection of students for personal interviews. The opinions are appreciated, and due consideration will be given to all suggestions.

## Stage Door Is All-College Play

At last it can be told. What has been a secret for the past three weeks is by now a well known fact. The Speech department of PLC is presenting its annual all-school play the 10th, 11th, and 12th of November. It will be under the direction of Mrs. Pauline Schaffer, who went to a considerable amount of work in finding a play that would be suitable for presentation. Many factors were involved, but have been solved by the selection that she has made. It's a comedy-drama, lots of characters, and a show that everyone will enjoy. By now you should have your interest aroused well enough to know it was written by Edna Ferber and George name of the play is "Stage Door," S. Kauffman. Faculty assistant to Mrs. Schaffer will be Miss Jean McGregor, who was with the Speech department last year.

The student assistant directorship has not been decided upon as yet. It is worth noting that the assistant student director on an all-school play is the highest available position to be reached. Therefore, caution is the keynote put forth by those in power on this all important job.

As was the case in the two one-act plays for Homecoming, the competition is the finest seen for the tryouts of any play so far. The actual selection of a cast will not be known until the end of the week, as the tryouts continued from Tuesday through Thursday. A complete list of characters and the people chosen to portray them will be published.

## Winged Theater Scheduled Here

Theater On Wings, America's only air-borne repertory theater, is winging its way to Tacoma. This recently formed repertory company will present Tennessee Williams' "The Glass Menagerie," Friday, October 14, at 8:30 p.m. in the Student Union building on the campus of Pacific Lutheran College.

Harold Winston, Theater on Wings director-producer-actor, has had a long career in the theater and in films. He was associated with Frank Capra at Columbia Pictures, Warner Bros., and M-G-M for nine years, and assisted in the shooting of many films including two Academy Award pictures.

The cast includes Naomi Stevens, Harold Winston, Barbara Ann McKenzie and Bob Burns Jr., son of the famous Arkansas traveler.

## Linne Outing Was Fun For Everyone

At 4:15 p.m. Tuesday, October 5, twenty-five members of the Linne Society and two chaperones (Dr. Legras and Mrs. Seligh) boarded the school bus and private cars and journeyed to Point Defiance Park. Every one met at the Aquarium and took a tour of the park and museum. Upon completion of this venture the members moved on down to the beach, where a bonfire was built. The rest of the evening was spent toasting marshmallows and wieners, eating and getting acquainted with each other. The evening's biggest problem was furnished by one of the members (John Hewston) who locked himself out of his car.

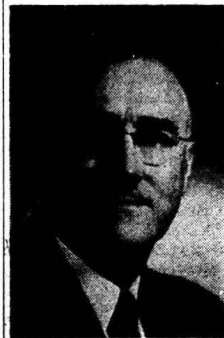
The weather man cooperated by holding off the rain until the outing was over. Roland Ytreide drove the bus. "A good time was had by all."

## Classes Elect Prexies: Knutson Heads Juniors

With run-off elections necessary in the three classes, the Junior, Sophomore and Freshman students of the college have elected their officers for this semester. The juniors chose Lowell Knutson as their president, Harry Malnes as vice-president, Maria Ogren as secretary, and Ray Tobiasson as treasurer. Wes Benson was elected to represent the class on the Inter-club Council. The voting was close for most junior class offices, and in two instances a two or three vote margin made the difference between election and defeat.

### Sophs Elect Reiman

Don Reiman came out of the soph-



Dr. Eastvold

### Announcement

Dr. Seth C. Eastvold, president of the college, has recently returned from a tour of several states in behalf of the church-sponsored appeal for educational funds. He will speak in chapel this coming Monday morning, and all students are requested to be present. His message will be one of paramount importance to the students and the faculty.

## Sohos Sponsor Hello Campaign

The signs that you have noticed around and about the last few days that tell of "school spirit" and "say hello" is the work of an active and enterprising group of girls who go under the organizational title of SOHOS.

The reason behind the signs is the Hello session that the girls are sponsoring to help the students get acquainted at the first of the school year. Lillian Leikauf, among others from Sohoh, was passing around little tags in the shape of a football. With the word "Hi," or "Hello" printed on them and the name of the wearer written or typed underneath, they have been serving as a personal card of introduction for all and sundry. The big poster in black and gold on a white background was made by Paul Arlton and "Knutie the Lute" Knudsen. Miss Leikauf explained the campaign during the student body day session in chapel yesterday.

## SEND ONE HOME

Send a Mooring Mast to your parents or friends. Order your subscription from Phil Falk or Marion Cummings. The people at home will be interested in the activities at your school. The subscription price is \$1.50 per year.

omore class race as president of the class. Bob Knutson will serve with him as vice-president, while Rosella Albrecht will perform the secretary's duties. Handling funds in the treasurer's post is June Nysteen, and the ICC representative for the next year will be Lillian Leikauf. The sophs experienced less run-off problems than the other two classes, and with fewer nominations per office they came out with their results at an earlier date than the juniors and freshmen.

### Freshman Slate Loaded

By press time, the freshman class still had not chosen a treasurer, but they have tabbed John McBride of Olympia to serve in the president's chair, and Stan Norley is the new class vice-prexy. McBride is a pre-seminary student, and Norley is an education major. Naomi Roe, or "Red" as she is known to most of us, won the secretary's post. She is a Parklandite, and her father, Reverend Kelmer Roe is a popular instructor in religion and Greek. Herb Neve, debate squad member, was chosen to represent the class on the ICC, and Mr. Zulauf, accounting and business teacher, will serve in the capacity of class adviser.

### STUDENT COUNCIL

The Student Council, now complete with the one exception of a representative from the freshman class, who will be elected some time this month, has placed the community chest drive in the hands of the ICC. The national forensic honor society of Pi Kappa Delta was empowered to establish a speakers' bureau to carry out the contact and speaking assignments of the campaign in cooperation with the ICC. This action was taken at last Wednesday's meeting. The Mooring Mast's editor requested that the council pay for the publication of the pictures of candidates for student body offices, Homecoming Queen, May Queen, and Saga Queen. The Mast hopes to publish individual pictures instead of the group pictures that have been used in the past. The Mast's new business manager, Phil Falk, will present the paper's financial picture to the council at its next meeting.

### INTER-CLUB COUNCIL

The Inter-club Council held elections under their new constitution last Tuesday night in S-108. The president of ICC holds office automatically, so that was one office for which there was no competition.

Bob Crumbaugh was elected to the office of vice-president. He will act as the chairman of the Executive Committee which is responsible for

Continued on Page Four

## Chapel Schedule

Dr. Eastvold, college president, will open the chapel exercises next week, with a talk on a serious subject which no student on PLC's campus can afford to miss.

A representative from the American Lutheran Church will speak to the student body on Wednesday. On Thursday, October 11, Miss Annie Knutson, college English teacher, will discuss Norwegian and English systems of education.

Mr. Patrick M. Steele, prosecuting attorney from Tacoma, will be the guest speaker during chapel exercises on Friday.

The student council has voted to change student body day from Thursday to Tuesday. The change will become effective beginning Tuesday, October 11.

## Stacy Is on The Road Back

Due to a very excellent and speedy recovery from a major operation performed Sept. 26, Marianne Stacy (our popular yell queen) is expected to be back with all her friends here at PLC within the next two weeks.

Relatives and close friends were extremely pleased with the doctor's report on how well Marianne came through the operation and the few hours following. Those of you who managed to get down to the hospital to see her will know what we are talking about when we say that as far as sportsmanship and good spirits went, Stacy couldn't have been beat.

Marianne was warned by her doctor before she went into the operating room that he didn't want her leading yells up and down the hospital corridor the day after the operation and though Marianne was tempted by the nice quiet halls she remained quietly in bed like a good little girl. She was up in a wheel chair two days after the operation, however, trying to set a new record for speedy recovery.

In a private interview, Marianne confided that "hospital life isn't all that it cracked up to be; it's really rather dull. The only things that are keeping me here are the meals and the visiting hours. Otherwise time goes too slowly."

Stacy has been convalescing at home since last Saturday and insists she will be yelling with the loudest of them at the Viking-Gladiator game in Bellingham, Saturday. Though we'd like that, our first concern is for Marianne's health, and the sooner we can have her back leading yells for us in an official capacity, the better we'll all feel.

## Lith. Student Late

Jurgis Bendikas, Lithuanian student sponsored by the Student Body, has not enrolled at this date. According to a letter received by the college he has been detained and will arrive in late October. Housing has been arranged and all is in readiness in anticipation of his arrival.

## The Mooring Mast

Published every Friday during the school year by students of Pacific Lutheran College.  
Entered as second class matter, October 2, 1925, at the Post Office at Parkland, Washington.  
Office: Student Union Telephone: GRANite 8611  
Subscription price—\$1.50 per year

Printed on the Campus by La Crosse Printing Company

EDITOR LOU INNERARITY  
ASSOCIATE EDITOR BOB ERICSON  
ASSISTANT EDITOR MARLENE SCHWENKE  
Editorial Staff Sports, Bob "Stretch" Ferguson; Religion, Alan Hatlen; Speech and Language Arts, Donald Graham; Feature, Katherine Reule; Society, Lillian Lrikauf; Drama and Music, Carol Schuler; Copy, Kenney Bryant and Edna McCall.  
Composing Staff Verne Brauvelt, manager  
Special Writers Glerin Clark, Norman Hawkins  
Reporters Don Breimo, Glenna Nelson, Dorothy Broomfield, Bill Morgan, Don Gannon, Luther Kroenk, Steve Kennedy, Jo Friday, Helen Enger, Olive Knutson, Roy Berg, Bob Johnson, Barbara Jonson, Stan Kuetni, J. Nelson, F. Berry, and Jon Ericson.  
Business Staff—Jo Ann Nelson and Dorothy Broomfield  
Advertising Circulation Marion Cummines and Jo Friday

### "Chalk Up a Win"

For those people who love to see someone go-out on a limb, here is something to remember next week. The MM's editor is going out on a limb and predicting a PLC win over Western tomorrow night at Bellingham. A further opinion is that any one who misses that tussle is going to miss one of the better games of the year.

A prediction should be based on something if it is going to be any better than a casual hunch, and this prediction is based on a renewed spirit among the Glads and a much better showing in practice. There is a feeling in the air that has been growing all week, and that feeling is exemplified in the hard-hitting spirit of the team in their scrimmages, and I mean HARD. The facts that Western has a tough line, especially in the middle, and has a good team in general, have been taken into account. The Lute fans who show up tomorrow night are going to see a whale of a ball game, or this editor will never venture to predict another football game (I can feel the leaves on the end of the limb now).

The sports writers of the dailies are referring to Eastern, CPS and Whitworth as the important teams in the Evergreen conference, but look for a different story along in the middle of the season. Any team in this conference that comes through completely unscathed will be fortunate indeed, and one less does not mean a conference championship loss. The Trail, CPS campus paper, feels that the winner of the CPS-Eastern game tomorrow night will be in line for the championship. But this conference series hasn't really started yet, and the Glads are on the road back.

No matter who wins the grid-go in the Lincoln Bowl tomorrow night, they will still have to meer, and beat, a rejuvenated Lute squad before they can start making room for the conference trophy. There is no prediction, as yet, about a conference champion, but the bet is that some conference clairvoyants are going to have to revise their crystal balls after the game in Bellingham. The game won't be easy, but we won't be easy on the Vikings.

To those who feel that they need a good, PLC-won game under their belts to make them feel better since the two drubbings we have taken in the last two games, then get on your horses, and watch PLC play football tomorrow night. Highway 99 will take you to Bellingham—you can't miss it, nor the game either. —LAI.

### Mast Help Wanted

The Mooring Mast still needs the assistance of people who are interested in writing either humor, news, feature, society, sports, or religion articles. Advertising personnel are needed to the extent of about four more people. Those persons interested in writing should contact Lou Innerarity, Bob Ericson, or Marlene Schwenne. Those interested in selling ads should see Phil Falk or Jo Ann Nelson. Circulation people are also needed, and they should contact Phil Falk or Marion Cummings.

There are a number of interesting assignments available, and new additions to the staff are always welcome.

### Chapel Quotes

"No man can make spiritual progress without being reconciled with God . . . through the remission of his sins in Jesus Christ."—Dr. Pflueger.

"It makes a tremendous difference which religion you believe in, and what kind of a God you worship."—Mr. Ramstad.

"Heaven is distinctly a place for God's people; for those who have met in Jesus Christ."—Pastor Roe.

"All institutions within the Christian Church must show forth the love of Christ."—Pastor Svare.

"Christianity is not afraid of intellectual analysis; the Bible is not afraid to be analyzed."—Mr. Weiss.

## Dear Mom . . .

By Norman Hawkins

Things around here are what we would call rugged. Take, for instance, in speech. We have to have a knout line of what we are going to say and then get up and hold ourselves so as to look like we aren't holding ourselves at all. And give talks about things which is supposed to be out of our head of which, the rest of the class is interested in. Only we should not talk about things like romance which narrows it down some. And also the botany part of this general biology. Like where the plants have cycles. That being like to us a standard of living more or less. In a manner of speaking. It all starts out with a little plant named Fern. Being to us a bifurcated or otherwise broken up into fronds, plant which is not the case, that is Fern's daughter and she is a neurilemma I think it is. In other words Fern, is microsporophyte. It is a little more clear about moss which is in a different film. Being one step over and above liverwort. It belongs to the family of muscivori. Being a result of a muscular membrane I think. And connected with gametophytes or gamasites or something.

Some of these instructors must be kind of confused. Like the speech teacher the other day. She said we should be nonchalant. So when we looked it up it isn't there. Maybe it was gunned up by this French writer Lavoisier. Anyway the nearest thing is noncalcescent. Meaning it don't hang together, which the whole thing don't. By the way I could go for some of your coffee about now. We are not supposed to be stimulated by stimulants around here and, you can sure tell it. You know what we say back home, the coffee is no good till it knocks the spoon out of your hand. Well the stuff most places here would never hurt even a new born moth.

My teacher in Comp One sure burned me up, we were supposed to write a theme using participles and gerunds. And draw lines under them. So I wrote about milking with that new machine and you putting up corn and apples and about us popping corn. And lots of other things. And then she says it isn't so because we don't do it like its a noun or an adjective, can you imagine hat? Like you should put up so many adjectives with every quart of peaches or something. You know I wouldn't lie mom because that is one thing we are very clean about.

Well that winds up the situation you might say. It sure is going to be like the poet says A long and arduous climb.

Your loving son,  
IVAR

A GENUINE 10% DISCOUNT  
ON SALES AND SERVICE . . .  
WITH PRESENTATION OF A  
STUDENT UNION CARD.



Hal's  
College Radio

415 Garfield St. Parkland

Centre Cleaners  
FOR ALL CLEANING NEEDS  
Parkland Centre Building -  
One block from Campus  
Carl and Ingrid Fynboe, props.

PIPER

Funeral Home

Phone HL 8479

5436 So. Puget Sound Avenue

The DONUT BAR

TAKE A DOZEN TO  
THE GAME

Parkland GR. 9950 Tacoma HI. 3081

## As We See It

A Tawasi Feature

Fans, do you want the football players to battle the Vikings alone, or should we be like Gladiators of old and unite for victory?

Even though the last two games haven't been to our liking, we should all support our team and not be the arm-chair coaches as we are sometimes inclined to be. Too often in defeat we lose interest and fail to support the team as we should. Let us all go to Bellingham in the right frame of mind.

For the remaining home games we have the following suggestions: We would like to have all the students sitting together to form a better rooting section. With the proper support of the rooting section we could rock the foundation of the stadium.

In the past we have heard many complaints that the students could not hear any music from the band. At the game in Bellingham you will find the band will do their best, and at the remaining home games the band will be playing from the upper part of the bleachers in the student section.

The last bit of advice we have is something that will require individual effort. There is little difference in a football player not knowing his plays and a rooster not knowing his yells. Therefore, it is imperative that you should learn your yells. Let us go through the rest of the season with this thought in mind: "Keep your face to the sunshine and you cannot see the shadow."

## MAST SCHEDULE

The publication schedule for the Mooring Mast has been established for this school year of 1949-50, and those organizations which may make plans for publicity releases to the paper should check the following schedule to make sure that a paper will be published, before such information is released.

October—7, 14, 21, 28  
November—4, 18  
December—2, 9  
January—6, 13, 20  
February—3, 10, 17, 24  
March—3, 10, 17, 24  
April—14, 21, 28  
May—5, 12, 26

## Pflueger Is LSA Prexy

Election of officers for the coming year and the approval of the constitution was the main business of the Lutheran Students' Association, Sunday evening.

Marilyn Pflueger will head the group as president. The position of vice-president will be held by Lowell Knutson, and Dolores Langset will serve as secretary. Ralph Hatlen will take charge of the club's treasury and Lief Knutson will represent the association in the Inter-club Council. Herb Neve was chosen for Spiritual Growth secretary. Grace Bloomquist is the new adviser for the fall year.

The proposed constitution of LSA was read to the group. After a discussion on each section, it was approved. Before it can be adopted by the club, it must be approved by the Student Council.

After the business meeting, Chauncy Christofferson and Mary Larson led a candlelight devotional program. As the group hummed Beautiful Saviour, Mr. Christofferson gave the closing prayer.

## Kluth Elected Head Of Organ Guild

To serve as a common-interest social group and to create greater enthusiasm towards organ music, is the purpose of the Organ Guild, one of the newly-formed organizations on the campus.

Those elected to head the club's program for the first year are: President, Al Kluth; secretary, Evelyn Peterson; Inter-club Council, Jody Triolo. Mrs. Malmin is adviser for the group. The student organization is affiliated with the Tacoma chapter of the American Guild of Organists.

WEDDINGS - CORSAGES  
FUNERALS

Stella's Flowers

Artistry in Flowers

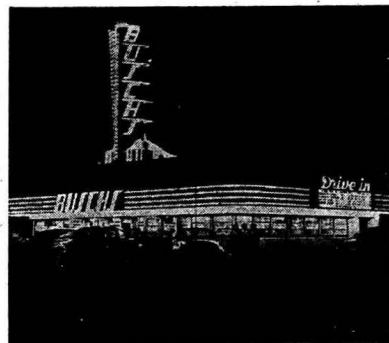
Parkland Center GR. 7863

PARTY CAKES and ICE CREAM  
CUP CAKES

22 Flavors of Ice Cream

PARKLAND DELICATESSEN

GARFIELD STREET



Sundaes -- Shakes -- Shortcakes

BUSCH'S DRIVE-IN

Good Food -- Speedy Service

3505 SO. TACOMA WAY

GA. 1513

# Gladiators Invade Bellingham Tomorrow Night

## "Time Out" Conference Tilt Lost to Wildcats

By Robert W. Ferguson

Last week the Gladiators suffered their first Conference defeat of the season, and they did look pretty good in losing; a lot better than the week before. The passing attack clicked good but I wonder why they did not keep throwing the ball instead of trying to run through that big Central line. Tomorrow night they play up at Bellingham and the Vikings have a big line and are playing good ball so far this year. They lost only by one touchdown last week to Eastern, so the boys will have to play good ball to beat them. Fresh in their minds is the 32-3 waxing we gave them last year, so chances are they will be really out to win this one.

This game tomorrow night marks the 15th meeting between the Gladiators and the Vikings. They first met in 1931 and PLC won it by a score of 27-7. Cliff Olson, now a Tacoma business man, and Sam Carver, golf coach at Western, were the grid coaches when the series started. Olson coached through the '46 season, when Marv Tommervik and Marv Harshman took over. Carver coached until 1934 when the present coach, Charles F. Lappenbusch, took over.

PLC has won ten of these games and Western three, with only one tie, and that in 1942.

A caravan of three special busses and many private automobiles are making the trek to Bellingham, so the team will not be without its loyal rooters. But when we get there don't be afraid to yell for the team—even if it looks bad. Keep up the spirit and the team will come through. They have been working hard and feel that it is about time to win a game. From now on out they will be the underdogs, and the players plan to prove to a lot of football fans that the team is a lot better.

Wildcats drop Lutes 12 to 0. It was a fortunate Central Washington grid team that came up with a 12 to 0 Lincoln Bowl victory over PLC last Thursday night in the Lute Evergreen opener.

Unhappy Lute fans watched the out-played Wildcats sandwich second and third quarters touchdowns between repeated, but unsuccessful Gladiator scoring threats.

Early in the first quarter, the Lutes, shunning their aerial arm, marched deep into Central territory. Wayne Brock, Lute half, returned a Wildcat punt from his own 40 to the Central 41. McKanna's 12-yard end sweep and plunges by Jurkovich, Brock, and Guyot brought the ball to rest on the Cat 18. Here, however, the Lutes were held for downs and Central took over.

The second quarter found the Lutes taking to the air. A Jurkovich to McKanna pass was good for thirty yards to the Central 33. Two plays later it was Knudson taking a reverse around left end to the Wildcat 15. But a bad lateral cost the Glads 13 yards, and the Cats shortly took over again on downs.

### Wildcats Score

Meanwhile, early in the second quarter, a slippery Central back named Eric Beardsley had gathered in a Lute punt on his own 20 and, preceded by fine downfield blocking, threaded his way 80 yards to a spectacular touchdown. The try-for-point was no good.

The second Wildcat score came midway in the third period after a Lute pass was intercepted on the Glad 26. With Bellows, Doran, and Beardsley lugging the leather, the Cats moved in nine plays to the PLC one-foot line, from which point Bellows plunged over for the TD. The try-for-point was missed again and the score stood at 12 to 0.

Unwilling to admit defeat, the Glads began, shortly before the end of the third quarter, what proved to be the longest sustained drive of the game. Starting from their own 7 the Lutes marched 77 yards to the Central 16 before the ball was lost on a fumble. Highlights were a Strandness to Guyot pass play good for thirty yards, and a Knutson to Jurkovich to Morris number good for 34.

The waning moments of the game again found the Norsemen deep in the Wildcat territory, but as before, the touchdown punch was lacking.

It was a tough one to lose. The Glads as a whole played good ball and looked much better than against CPS. The Lute superiority was clearly affirmed by their 264 to 162 yard net gain advantage.

Two Lutes came out of the game with serious injuries. Oliver Magnuson, a promising freshman tackle, received a fractured wrist and will be out for some time. Hal Fallstrom, another tackle, was carried off the field with a badly bruised ankle.



PICTURED ABOVE is Harry Malnes from Ballard. Out of action for the first three games this year, Harry is expected to see plenty of action tomorrow night when the Lutes tangle with the Vikings at Bellingham. Malnes is an exceptionally good punter and is one of the fastest men in the backfield.

## New Gridmen's Histories Given

The football picture at PLC picked up this semester with several outstanding high school athletes and some Junior college transfers. Lincoln High School of Tacoma sent three good linemen which will help the school considerably this year and in the next four years also.

Glenn Huffman, an outstanding football, basketball and baseball player, has seen plenty of action already this year. On defense he backs up the line and on offense he is left end. He was co-captain of the Lincoln team in his senior year and was elected to all-city team and all-cross-state. He weighs 192 pounds and is plenty rugged.

Oliver "Ole" Magnuson only played one year of football at Lincoln, but he was regarded as an exceptionally good tackle. He made the all-city team and second team all-cross-state. In the Spring he is an able track man, throwing the discus or the shot with good distance.

Chuck Forsland, the short, stocky fella of the three, weighs 200 pounds and not only was a three-year letterman in football but also in wrestling, where he was captain in his last year.

Gene Rainbolt, who has had an injured knee, has seen very little action but with his passing and running he soon will be seeing a lot of action. He is a graduate of Everett High School, where he was a three-year football letterman. He did play some baseball but always felt at home on the turf.

Hank Habegger, a product of Dutch Shields' Vancouver High School team, is a 210-pound end. He is the typical all-around athlete, but would rather play football, basketball and track. His hobby is golf and he

shoots in the low 70's. In his last year at Vancouver he was awarded the Shields blanket for outstanding athlete in the school. He spent two years in the Army and while stationed in Germany he played football and hockey for the Frankfort Blackhawks. After he was discharged he entered Clark Junior College and was all-conference end last year. He has been bothered by a bum knee but it looks like he will see more action in the future.

Next week we will print the rest of the news about the new players that have entered PLC this fall, who, we hope, will help the athletic department very much. Some of these fellows are not outstanding athletes, but we believe that if they all work together we will win more than our share of games.

Some goals of an average PLC student: Decent grades, social recognition, active participation in extra-curricular activities and a post office box.

Patronize Your Advertisers

By Bob Brass

Tomorrow night the Lutes face the strong Viking eleven at Bellingham, and judging from the practice sessions this past week, the loyal fans who journey North will see a rejuvenated team on the field.

The Gladiator coaches, Tommervik and Harshman, have made a few switches in the lineup and in the offensive style of playing. At the time of this writing the switches in the lineup are indefinite, but the offensive play has been changed. Monday night found the squad running from a straight "single-wing" instead of the "wing-T" which has been employed thus far this season. This "new" offensive play should be familiar to all of the old supporters of the team, as it is the same style which has been used, putting the power to the right.

The Vikings have a big line this year and hope it will hold together so they can win some games. Last week they held Eastern to 13 points and that is looked upon as quite a feat since Eastern has such a terrific team this year. But probably the Vikings are tired of taking it on the chin all the time and have finally come to life. Fresh on their minds is the 32-3 beating they took last year in the Stadium Bowl. The Gladiators will be out there fighting and the fans wish them all the luck in the world.

Coach Tommervik plans to take about 34 men tomorrow night but might make a few changes at the last moment. Roy Hagen and Oliver Magnuson are out indefinitely and Harry Peterson suffered a badly cut eye in scrimmage last Monday, but it is believed he will be ready for action.

### SPLINTERS . . .

For enjoyment plus, take a perk in on the folk dancing classes, held in the gym, sixth period each Monday and Wednesday . . . Assistant Coach Bob Arps also lends a hand in the trainer's department for PLC and Lincoln High . . . Footballer Bud Hatley received the black eye he's been sporting all week in the Central game, not from his wife . . . Notre Dame Coach Frank Leahy had quite a bit to say about last Saturday's game with the U. of W., but what his comments were after receiving the crying towels from the fraternities and sororities at the U will be no one knows . . . Hank Habegger is really a man of the world; he supposedly played for the U. of Oregon, then came home and played for PLC against CPS the same night. Pretty good if he could do it . . . Ask Phil Thorliefson his secret for staying awake in classes—he also manages to do it in chalk-talks for football . . . If Western beats us, maybe the Monday-morning quarterbacks had better talk to the coaches and tell them what's wrong with the team? Well, that's 30 for today, so I'll sign off and wish Stacy a speedy recovery.

A lot of PLC students are enjoying their two-credit-hour classes where enough work is assigned to make them equivalent to regular four-credit-hour courses.

**Raymond Electric Company**  
Engineers - Contractors  
813 Pacific Ave. BR. 1712

**DANIELS HARDWARE**  
★  
ON THE HIGHWAY CORNER  
PACIFIC AVE. & GARFIELD

FOR THE BEST . . . IT'S  
**ART'S SHOE SHOP**  
SHOES DYED AND RESUEDED  
Garfield St. Parkland

**JOHNSON'S DRUG**  
DRUGS - STATIONERY  
SUNDRIES  
Registered Pharmacists  
Centre Building Parkland

**PARKLAND BARBER SHOP**  
MARSH and KNUDTSON

**Mrs. Frisbie's BAKERY**  
For Good Bakery Products  
710 So. 38th St. GA. 7591

When You Want Office Supplies  
**C. Fred Christensen STATIONER**  
913 Pacific Ave. BR. 4629  
Tacoma, Wash.

**PARKLAND AUTO PARTS**  
IN CONNECTION WITH  
**Parkland Fuel Oil & Service Station**  
GRanite 8112 Parkland, Wash.

SEE OUR SCHOOL TOGS  
For Men and Women!  
**Washington HARDWARE CO.**  
EST. 1884  
918 - 24 PACIFIC • 523 COMMERCE  
**SPORTS SHOP**

## Band Elects Winters Pres.

The college band met recently and elected its officers for the coming term. Bob Winters gained the president's office, while Cal Watness was voted into the vice-president's post. Beth Scheeler was elected as secretary-treasurer, and Paul Bentson was chosen as publicity chairman.

The band has announced that they will be present at Bellingham for the football game tomorrow night.

## "Harry" Makes SUB Coffee Shop Click

Shortly after our Student Union building was opened for use in the fall of 1947 the Coffee Shop in that building was also opened. It did not stay open very long, however. Since that time various persons and groups have taken over the management of the coffee shop without success. Until March 15, 1949, no one seemed to be able to make a go of the only on-campus eating place.

On March 15 of this year Mr. Harry Foster took over the management of the Student Union Snack Bar. Since then everything has gone smoothly and everyone is satisfied. Mr. Foster, known to most of us as "Harry," kept the Snack Bar open all summer, and made some improvements.

Dissatisfied with the type of bakery goods he had to serve at high prices, Harry decided to make all of his own pastry. To do this he had to buy a bake-oven. That bake-oven paid for itself in a few weeks because of the quality of pastry turned out and the low prices. "Harry" then gave the oven to the school.

Harry is no stranger to this area or to his present business. He has made his home in Tacoma for twenty-

## Phil Falk Is MM Business Mgr.

Phil Falk, who is active on the campus as co-chairman of the Homecoming festivities, and is also participating in the school's drama productions, has become the Mooring Mast's new business manager.

His experience with the accounts and treasuries of various campus organizations, and his major interest in the business department have qualified him for appointment to his new post.

The new director of the business affairs of the Mast has already taken over the monumental tasks that include circulation, subscriptions, and the all-important advertising branch. The fact that the Mast began this year with a deficit of more than \$300 makes his job an important one. The Mooring Mast has made a valuable addition with Phil Falk in this capacity.

### FRANWELL'S

Waffles  
our specialty

772 BROADWAY

### DON'T GUESS!

EAT AT THE SNACK BAR AND BE SURE

S. U. B.

four years and during that time he has owned several restaurants in the town.

The restaurant business is not the extent of Harry's knowledge, however. During the war Harry sailed with the United States Transportation Corps, on ships carrying the supplies of war from Seattle. He was chief steward aboard these ships. Before the war he sailed the seven seas in other capacities.

Every morning from Monday through Friday, Harry opens the snack bar at seven a.m. and is open for business until he closes at approximately four-thirty in the afternoon. He has become very well-liked on the campus, both for himself and for the way in which he operates his business. Perhaps it is too early to predict, but it looks as though Harry will be with us for a while.

## Alpha Sigma Elect Anderson Prexy

The first meeting of Alpha Sigma Lambda, the social science club, was held Wednesday, September 28, in the Student Union lounge.

Last year's president, Eugene Anderson, presided over the election of officers for the new year. Those elected were: Don Anderson, president; Hal Jensen, vice-president; Lorraine Cummings, secretary; Roy Larson, treasurer. Leo Shepro was appointed Inter-club Council representative by the newly-elected president.

Alpha Sigma Lambda, a PLC social and service organization, is an active participant in campus activities. All social science majors (business administration, sociology, history, and political science) are invited to attend the next meeting, October 12. Club adviser is Dr. Patrick.

## Classes Elect Prexies

Continued from Page One

drawing up the tentative schedule of meetings and function dates to be approved by the Council as a whole. The position of recording secretary was won by Miss Dolores Langseth.

Probably the most important office, that of corresponding secretary, was won by the "old campaigner," Ed Dorothy. The corresponding secretary is the Inter-club Council's representative to the Student Council, and will be responsible for representing the constantly changing student opinion in the group which has little opportunity to poll students as to their opinions on current matters. The corresponding secretary will also publish the resolutions and actions of both the Student Council and the Inter-club Council through the latter group each month.

The office of Parliamentarian went to Don Graham. He will also head the Legal Committee composed of Bob Brass, Gene Ahrendt, Larry Hauge and Marcus Rietz. With the exception of the chairman, the committee was appointed by President Gene Strandness.

The ICC selected the first and third Mondays of each month as their regular meeting schedule. The definite time and place will be announced for each meeting by the ICC chairman.

## Bellingham Ride List Established

During student body day in chapel yesterday, student body president, Del Zier, announced that there were several unfilled seats on a bus that the ASB hopes to charter for the trip to Bellingham tomorrow. The seats are listed at \$3.25 for a round trip, and those persons interested were asked to sign up for the seats at the information office in the main building.

Students who own cars and are driving to Bellingham for the game are asked to list their cars at the information office where students without transportation may sign up for rides.

The student body president, among many other students, has expressed the hope that there will be a large attendance on the part of PLC-ites at the game tomorrow night. Western is one of our oldest opponents, and they will be out to beat us at this game. They have accomplished the task of winning over us a very few times since the first game was played between the two colleges.

### EVERGREEN STANDINGS

	W	L	PF	PA
Puget Sound	1	0	27	0
Whitworth	1	0	21	0
Central Washington	1	0	12	0
Eastern Wash.	1	0	13	0
Western Wash.	0	1	6	13
Pacific Lutheran	0	1	0	12
St. Martin's	0	2	0	48

(University of British Columbia games do not count in league standings.)

### Games This Week

Central Washington vs. Whitworth, 8 p.m. Friday, in Ellensburg.

College of Puget Sound vs. Eastern Washington, 8 p.m. Saturday, in Tacoma.

Pacific Lutheran vs. Western Washington, 8 p.m. Saturday, in Bellingham.

St. Martin's vs. Lewis and Clark, 8 p.m. Saturday, in Olympia.

### ON THE CAMPUS

For Your Convenience . . .

- Personal Stationery
- Programs
- Christmas cards imprinted
- Tickets, etc.
- We print your Mooring Mast

### LaCrosse

Printing Company

On the Campus, Old Chapel Bldg.

Complete  
Banking  
Facilities  
in the nearby  
Lincoln District



LINCOLN BRANCH  
3808 South Yakima Ave.

Member Federal Deposit Insurance Corporation

## Play Casts Are Finally Decided

Casting for the two one-act plays to be presented for the Homecoming activities, by Alpha Psi Omega and Curtain Call Club, proved far more difficult than was anticipated. Directors Walt Worley and Vern Fink were greeted by old experienced thespians and a new group of freshmen and transfers who displayed an abundance of talent. Competition was keen, and in many instances it was a toss-up to see who would be cast. Minus a few fingernails, tufts of hair, and enumerable cigarettes, they came up with the final decisions.

"The Twelve Pound Look," directed by Walt Worley, will have Jim Williamson as Sir Harry Simms, Evangeline Ordahl as Lady Simms, Geneve Purves as Kate Simms, and Paul Templin as Tombs.

Vern Fink and his "The Dear Departed," chose Morris (Barrymore) Hendrickson as Abel Merryweather, Janice Johnson as Mrs. Slater, Del

Zier as Henry Slater, Francis Biery as Mrs. Jordan, Bob Ericson as Ben Jordan, and LaWanna (12 year old) Wellsandt as Victoria Slater.

At the Delta Rho Gamma dinner Friday evening, Miss Gussie Benson, who attended PLC last year, passed the traditional box of chocolates announcing her engagement to Don Gannon, a junior here this semester. No date has been set for the wedding.

Patronize Your Advertisers

**C. O. Lynn Co.**  
MORTUARY  
717 TACOMA AVE. Phone MAIN 7745

**NEAL E. THORSEN**  
TRICKS - JOKES - MAGIC  
Costumes - Tuxedos - Serpentine  
926½ Broadway MA. 4861

## THREE-DAY SERVICE on Laundry, Cleaning and Repairing

24-HOUR SERVICE AT PLANT

## Fashion Cleaners

PICK UP and DELIVERY

GA. 3372

3820 Yakima

## Refresh... Add Zest To The Hour

The Coca-Cola Company brings you...

Edgar Bergen with Charlie McCarthy CBS Sunday Evening



Ask for it either way... both trade-marks mean the same thing.

BOTTLED UNDER AUTHORITY OF THE COCA-COLA COMPANY BY THE COCA-COLA BOTTLING COMPANY, TACOMA, WASH.

© 1949, The Coca-Cola Company

### Net Cost . . . Low

life insurance is issued to Lutheran Men, Women, and Children ages from birth to 65. The members of Lutheran Brotherhood OWN the society, and they ALONE receive the earnings. There are NO stockholders.

# Lutheran Brotherhood

Legal Reserve Life Insurance for Lutherans

MINNEAPOLIS 2,

HERMAN L. EKERN, President

MINNESOTA

GARFIELD STREET  
Phone GRanite 5221

JESS W. THOMPSON  
NYER URNESS

PARKLAND  
Washington

Build Your Estate Now!

★

Your Future Starts Today