

PACIFIC LUTHERAN COLLEGE

mooring mast

VOLUME XXXVII

PARKLAND, WASH. FRIDAY, OCT. 2, 1959

NUMBER 2

Mixer, Rally Tonight, Gym

Tonight in the Memorial gymnasium, beginning at 8:00 p.m., the sophomore class will sponsor an all-school mixer.

Included on the entertainment program will be vocal selections by Lollie Ihlenfeldt, an impersonation of comedian Victor Borge by Walt Schweiger, a piano number by freshman Howard Hughes and selections by the PLC Pep Band. Another feature of the entertainment will be a community sing of favorite tunes.

About 10:00 p.m., the activity will move outside for a pep rally in preparation for the Eastern game tomorrow.

Refreshments will be on sale in Room G-1, the large lecture room in the gym. Doughnuts, pop and coffee will be sold. Those purchasing refreshments are asked not to bring them into the gym proper.

In order to preserve the fine finish of the gym floor, all attending will be asked to take off their shoes. Bear this in mind as you make your choice of footwear for the evening.

Bob LeBlanc and Mary Rogers are in charge of the event. Working under them in charge of refreshments will be Joanne Peterson, and Daryl Ashpole is in charge of the bonfire rally.

Business Manager Resigns From Saga

At the Tuesday meeting of the Student Council, the resignation of Allan Peschke, business manager of the 1960 Saga, was announced.

The council took action to fill this vacancy by approving the appointment of Richard Dean Finstuen, present assistant business manager of the Saga, to the position of Saga business manager and Student Council representative.

ASPLC Leadership Retreat Stresses Group Techniques

by Joan Ruud

Ninety PLC students participated last weekend in the second annual Leadership Retreat held at Camp Lutherwood on Lake Samish near Bellingham.

Mr. Amend, assistant superintendent of the Highline School District in Seattle, helped in the planning of the retreat and was the keynote speaker at the camp. He informed the students on group philosophy, the role of the leader and the group member. Misuse of these roles were illustrated in a humorous skit given Friday evening.

Saturday six group sessions were held on the topics: Academic Role of the Student, Social Life on Campus, Christian Emphasis, Community Service, Student Participation and Publicity. Each person attended three of the 1½-hour sessions. In these groups school problems and solutions were discussed while putting group techniques to use. A thorough evaluation of the sessions was given that evening by the group leaders, recorders and Mr. Amend.



PEP BAND MEMBERS are "tuning up" for their first appearance this year, at the all-school Mixer tonight. Checking over their music from left to right are Wayne Hill, Oliver Larson, Doug Johnson, Dan Shaffland and Bob LeBlanc.

Pep Band Gets Facelift This Year

PLC's Pep Band will have a new look during the coming months.

The most noticeable feature of this new look will be red and black plaid blazers, made during the summer by some of the girls in the student body. Tudi Rogness had charge of the project, which was backed by

Philo-Kaleans Give Fourfold Purposes

Philo-Kaleans is a newly-organized group of students who have resumed their education after a lapse of time.

Purposes of the club are to provide an opportunity to share common problems, to encourage present students to continue their education, to stimulate community interest in adult education and to offer academic fellowship for those who have returned to college.

Advisors for this club are Dr. Paul Vigness and Miss Margaret Wickstrom.

the Student Council.

Another change in the band this year is the instrumentation. This change was made for two reasons. It cuts the band down to 20 members, and it creates a group having the proper instrumentation for playing new arrangements which were purchased during the summer.

Directing the band this year will be sophomore Bob LeBlanc. Concerning the band, Bob said, "We hope that the music we will play during the coming year at basketball games and other school functions will please all of you. It will be different than a lot of the things that past bands have played, but I think it will be a style of music that the entire student body will enjoy."

PLC Enrollment Reaches 1,670

When young America returned to classes this fall, the enrollment at PLC rose to a staggering 1,670 students in contrast to 1,552, the enrollment in 1958.

The campus was engulfed by 566 freshmen as opposed to last year's 555. The sophomore class has 394 students, the juniors have 338 and the senior class has 230.

There are 129 graduate students and 13 special students—those that are auditing or taking a special course such as music lessons or voice.



BEANIES AND BIBS seem to be the latest trend in sportswear around campus this week. Although a required part of the freshman initiation activities, Chris Jacobs, left, and Paul Fairness don't seem to mind, as they examine their new accessories before a mirror.

Grads Return Oct. 30 For 'Wide, Wide World'

With a sweeping theme—"Wide, Wide World"—for a sportive weekend, PLC prepares for Homecoming, October 30 through November 1.

Coronation of the homecoming queen opens up festivities at 8:00 p.m. Friday, October 30, in the CMS. Following the ceremony, her majesty and attendants will lead the students and alumni down to lower campus, where the pep crew will head up some old Lute yells (it's been a long time for some grads!).

Special Student Gathering

While the alumni talk over old

times at a CUB coffee hour, beginning at 9:30 p.m., the students will relax in the gymnasium for an evening of entertainment and recreation.

Saturday begins rough 'n tumble with the annual Powder Puff Derby, this time a soccer contest. Half-time will be a breather for the gals only, as freshmen men tackle the sophomore males in a push-ball game.

Harry Gets Crown

Also, Handsome Harry, chosen in an all-school election, will receive his crown at this time.

At 1:30 p.m., students and home-again Lutes will witness the PLC-Central Evergreen Conference football game. Decorations, special effects, and a half-time show will add even more color to the afternoon. That evening the alumni will gather in the CUB for the annual banquet.

Play Put in Orbit

Speaking of the "Wide, Wide World," "A Visit to a Small Planet," Alpha Psi Omega's homecoming play, will be performed Saturday night in the CMS. "We wanted something different, and this one is just about as different as they'll ever see on our stage," explained Rollie Wulff, student director, who is being assisted by Lyle Pearson.

After morning worship on Sunday, the school will open its doors from 1:30 to 3:00 so that the alums can have that final look before they scatter again to all parts of the world.

Lutes Choose New Yell, Song Leaders

Two experienced coeds and three freshmen were selected as song leaders for the school year in competition held Tuesday evening in the Class Building.

Rita Altpeter, a senior, will be leading for the fourth straight year, and junior Karen Bird will be in her second year.

The freshmen chosen by the three faculty and six student judges include Bonnie Jorstad, Karren Hanson and Barbara Prideaux. Bonnie is from Ballard High, Seattle, Karren from Puyallup, and Barbara from Queen Anne High, Seattle.

Three girls and three fellows were elected by the student body to occupy yell leader positions for this year. Sophomores Nadine Bruins and Dan Erlander received a majority vote in the primary election, while senior Art Ellickson, sophomores Tudi Rogness and Margie Quick and Rich Wilson, freshman, won out in the final voting.

Big-Little Sisters Plan Tea

AWS will present the annual Big-Little Sister Tea next Thursday, using a theme of "Women Around the World."

Different from years before, teas will be held in North, South, West and Ivy halls. Big sisters will escort their little sister to the big sisters' dorm for the tea. Teas will begin at 3:30 p.m. in North, South and West, and at 3 p.m. in Ivy—so the girls will get up the hill in time.

At 4:30 the girls will adjourn to Chris Knutzen Fellowship Hall for a program, when Mrs. S. C. Eastvold will be the speaker.

Nancy Reinvik is the chairman of the Big-Little Sister program for AWS. Chairmen in residence halls are Claudia Knott, Karen Holman, Eleanor Bousfield, Muriel Swenson, Janene Holeman. Refreshment chairman is Elaine Benson.

Big Sisters are urged to contact their little sisters to make arrangements soon. They may follow up the afternoon by taking their little sisters to dinner after the tea.

PACIFIC LUTHERAN COLLEGE *mooring mast*

Editor.....Deanna Hanson
 Feature Editor.....Carol Morris
 Sports Editor.....Larry Dale
 News Editor.....Pete Jordahl
 Business Manager.....Barbara Isaacson
 Circulation Manager.....Carol Teslow
 STAFF—Jane Brevik, Marilyn Lundblad, Connie Heron, Karleen Isaacson, Jim Olsen, Dave Crowner, Lavonne Erdahl, Mary Rogers, Nancy Johnson, Sandra Benson, Bob Olsen, Priscilla Hutcheson, Judy Perry, Ann Ingebritson, Carol Swan, Keith Wetters, Judy Carter, Jim Beals, Jim Kittilsby, John Hanson, Alan Ostenson.

Advisor.....Mr. Milton Nesvig
 Photographer.....McKewen Studio

Published Fridays of the school year by the students of Pacific Lutheran College, Parkland, Wash.

Office: College Union Building
 Phone LEnox 7-8611, Extension 41
 Subscription price \$3.00 per year.



Reluctant Scholars?

Why are PLC students reluctant to be real scholars instead of merely working for a grade?

Perhaps on our college campus there is too much emphasis placed on activities. Students often mis-judge their time and capabilities. When they begin their college career, some freshmen think they're here to see how many activities they can get into.

Here is where many fail to realize that college is not quite like high school; besides being on a higher academic level, an individual must assume more responsibility for himself and his education. For some, studying becomes a serious thing for the first time in their educational career. Of course, an individual must participate in some type of activity outside of the lecture hall if he is going to grow and mature intellectually. A student should be able to combine both scholastic and extra-curricular activities.

There may be a need for closer faculty relations. A student needs an opportunity to contact his professor, discuss problems openly, and feel free to approach him. If there is a two-way relationship between faculty and student rather than one of indifference, the individual's interest and desire to learn will be kept alive and stimulated.

Very few people work at their capacity. Rather, they are prone to do only what is necessary to get by. How can these people be stimulated into a more concentrated study effort?

Yes, we have study hours. But ask someone just when they are, and the majority of the dormitory occupants can't tell you. Few people observe these hours, and those who try find competition rough. Would enforced study hours help stimulate those students who need it? Maybe the situation could be helped if all upperclassmen would take it upon themselves to impress the need of study upon newcomers when they first come in contact with PLC.

Another suggestion might be study tables or rooms, where faculty or a tutoring service would be available to those who need it.

Study retreats have been put into practice by groups from many colleges and universities, who retreat from the campus for concentrated study on a mutual subject.

Clubs and organizations can help to stimulate scholarship by disbanding meetings and activities around examination periods.

And finally, scholarship should be recognized. This can be done by means of an honor roll or dean's list—a common practice of colleges and universities throughout the United States.

What is the academic role of the student? Each individual probably has his own theories, but one fact still remains—your education is your responsibility.

(Editor's Note: This is the first in a series of articles based on the Leadership Retreat discussions last weekend. Through these, it is hoped to bring back the ideas that came out of these group discussions and make the student aware of problems which pertain to our college and to colleges across the nation.)—Deanna Hanson.

Student Congregation

On Sunday, October 4, Pastor Larsgaard will speak on the theme: "Peace and Purity." His text is Ephesians 4:17-28.

Sunday: 9:30 a.m.—Bible Study in CB-200
 11:00 a.m.—Worship Service
 6:30 p.m.—L.S.A.
 8:00 p.m.—Holy Communion

Mrs. Nelson 'First Lady' OF PLC's Evergreen Court

by Ann Ingebritson

The Evergreen Sheraton-Hilton, better known as Evergreen Court, is one of the most recent additions to the Pacific Lutheran College campus. Evergreen Court was built last year and serves as home to sixty-nine men—mostly juniors and seniors. The Court has some unique features. First of all, it is located about two blocks from upper campus—which is fine until it rains. Each unit has a private entrance and opens directly off the courtyard. Also, every "suite" has its own private bath.

Many people think of a man as an abominable housekeeper. This is not so, according to Mrs. Clara Nelson, housemother of Evergreen. A weekly room inspection is conducted and the boys' rooms often are more presentable than those of the girls. Mrs. Nelson ought to know: she was housemother at South Hall for three years before she went to Evergreen.

The lounge offers a very interesting experiment in furniture arrangement. As a person enters, all he can see is row upon row of lounging chairs lined up in strict lines facing the built-in television set. This same lounge is where the boys hold their evening devotions. The sincerity and enthusiasm which go into their devotions are typical of the PLC "plus."

Mrs. Nelson, Evergreen's "Mother away from home," enjoys doing such little jobs as sewing on buttons and



MOTHER TO 69 fellows at Evergreen Court, as well as aunt to one faculty member (Dr. Reigstad), is Mrs. Clara Nelson, shown at the desk in her office-apartment which opens off the lounge.

emblems for the boys. One of the jobs she doesn't have to do is to see that everyone gets in on time at night. There are no house rules about hours, but each room has its own laws, and the boys see they are carried out.

Everyone likes life at Evergreen, including two foreign students who are getting their first taste of American college life at Pacific Lutheran. The studies, and especially the warm community life at Evergreen Court, should provide them with the lasting "plus" which PLC gives to each of its students.

Last Weekend Was Social Success For Campus Despite Leaders' Absence

by Bob Olsen

Is PLC's student life dominated by a small group of leaders? Not at all, if last week is any indication. For, while over 80 of the College's top officers were away at the Retreat, the campus was experiencing one of the most successful social weekends in recent times.

Friday night Alpha Phi Omega sponsored the annual all-school skating party at the South Tacoma Roller Bowl. Well over 100 PLC students donned skates and had a good time "going around" with each other. A few found that there's not too much fun on a skating floor when you come right down to it, but the response in general was enthusiastic, and many expressed the hope that there would be other such events in the near future.

Saturday evening was a truly stellar one, as the Lutes went "into orbit." All six of the larger dorms participated in producing three hours of what was probably the most outstanding fun and fellowship ever seen so early in the school year. The "blast" started with an informal mixer in the Chris Knutzen fellowship hall, sponsored by the men of Old Main. Dennis Troedson was master of ceremonies. The musical program was interrupted by the arrival of the motley crew from Camp Cucamonga. This intrepid group of campers, starring Big Bob Nettelblad, did a hilarious pantomime of Home and Jethro's parody of "The Battle of New Orleans," in which they pursued a group of girls they caught "swimmin' in the (well, now)."

The campus was honored soon after by a surprise visit from Premier Khrushchev (Marv Jacobson), medals and all. Nobody was able to play his favorite song, "Red Tanks in the Sunset," but Rod Humble's guitar quintet gave a rendition of "Siberian (formerly Tiajuana) Jail" for him.

Following this, each of the upper-campus girls' dorms put on a program, each with three showings so that nobody had to miss any of them. There was standing room only at every performance. North Hall became the realm of the Beat Generation, as black-clad waitresses served Expresso Coffee, Judy Likkel read "beat" poetry, and Howard Hughes improvised the 'coolest' music on the piano, with bongo accompaniment. West became a showboat with musical numbers and blackface comedians under the direction of "massa" Jeanne Van Lierop, Manhattan, or South Hall, presented a night club show with a combo and starring Miss Opal (Ralph) Carskadren, a beautiful blond falsetto-soprano who sang duets with her (?) 'sister,' Carolyn Kinzel.

The climax of the evening was a western songfest back in C. K. Hall, put on around an almost-real campfire by Evergreen and Ivy courts. The evening ended here with low lights, western choruses, hymns, and devotions. The whole program was a great success. There were over 300 paid admissions, raising \$38 for the sponsors, the men of Blue Key.

So, there it was. Now, if we can have 35 more comparable weekends, we ought to have the greatest year in history.

Student Health Service Vital Part of Campus

by Judy Heitman

One of the vital parts of any campus is the health center. Whether you have a cold or a serious illness, it needs to be taken care of properly and quickly. At PLC we are fortunate in having a competent service to take care of us.

The Health Center is located right beside the College Union Building and across the street from West Hall. A registered nurse is on duty from 8:30 a.m. to 5:00 p.m., Monday through Friday, and on Saturday from 8:30 a.m. to 12:00 p.m. Dorm calls can be made during these hours if necessary. A doctor is on duty from 10:30 a.m. to 12:00 p.m. Monday through Friday.

The college nurse is Mrs. Howard Bergum, who has come to us this year from Tacoma General Hospital, where she was director of staff education. Mrs. Bergum is a graduate of Tacoma General Hospital and holds a bachelor's degree in nursing education from PLC. She did her graduate work in public health at the University of Washington. During World War II she served for four years in the Army Nursing Corps.

Other positions she has held, in addition to those at Tacoma General Hospital, are director of nursing at Good Samaritan Hospital, Puyallup, and Mary Bridge Children's Hospital in Tacoma. She is now president of the Lutheran Nurses Guild for Tacoma-Pierce County.

Dr. Randolph, the college doctor, is a graduate of PLC and the University of Washington. He did his internship for the U. S. Public Health Service. He is in private practice here in Parkland and has been associated with PLC for two years.

Also on the staff are Dr. Bondo and Dr. Rosenblatt.

Our busy health center offers to the students more services than any other college of our size.



A NEWCOMER to the PLC faculty family is Mrs. Howard Bergum, a former student here.

Comments Vary On Khrushchev's U. S. Visit

A growing gripe on campus these days is a lack of interest in current events and world news. When interviewed on the subject of Khrushchev's visit to the U. S., some students had no opinion at all. Here are some of the opinions of those who do follow the news:

Al Ostenson: "He didn't accomplish much. Nothing was changed. It was all just propaganda. People who hated Khrushchev before still hate him."

Dea Reiman: "He accomplished what he came for, which was to get the people to listen to him. His picture was on every front page, he had network time on TV. He succeeded in showing America he is a strong man. It was a well-run publicity campaign."

Eric Ottum: "Khrushchev appealed to the masses here as one of us. He has a certain appeal to the working classes. His visit was a big boon to communism."

Marianne Gregersen: "Whether he meant to or not he did serve to warn us, make us more aware that his mission was not all peaceful. It opened my eyes."

Mr. George Elwell: "I don't think it hurt anything. It was interesting for him to come."

Jane Ross: "I agree with Dea, opinions were preset. How many were changed by his visit?"

Our last comment was from Comrade Jan Aust, who thinks the Soviet Premier's visit here was "just wonderful!"

Lutes To Host Savages In League Tilt Tonight

Two football teams still looking for their first triumph of the young season will clash tomorrow night at 8:00 in Lincoln Bowl when Pacific Lutheran's Gladiators play host to the Eastern Washington Savages.

The outing is the first Evergreen Conference tilt this year for the Lutes and the second for Eastern, Lutes and the second for Eastern.

Two weeks ago PLC was edged 7-6 in a King's-X game with CPS while coach Ed Chissus' Savages bowed to the College of Idaho 18-0 in their first game this year.

Eastern has 13 returning lettermen from last year's squad which tied for third in the conference and blanked the Glads 21-0 in Cheney.

The Savages' defensive line is perhaps one of the biggest and toughest in the league this year.

PLC will field an offensive unit with a new look tomorrow, according to coach Jim Gabrielsen.

John Jacobson, three year letterman at quarterback, has been moved to fullback where he can make best use of his 6-3, 210 pound frame.

Stepping into the starting spot as signal caller is a sophomore transfer from the University of Oregon, Doug McClary.

McClary, who stands 6-3½ and tips the scales at 200 pounds, is an exceptional passer who starred at Lincoln in Tacoma during his high school days.

Bruce Alexander, a starter against the Loggers, will be at halfback along with freshman Dave Reynolds.

Both Reynolds and Alexander are products of Franklin Pierce of Tacoma. Alex graduated in 1957 and Reynolds last year.

The starting ends will remain unchanged with Dave Bottemiller, 6-1, 180 pounds, and Bill Lennon, 6-0, 180 pounds, getting the nod.

Bill Bates, 6-0, 195 pounder from Highline, will again start at tackle while Orson Christensen will play the other tackle. Orse stands 5-9 and weighs 180 and is from Oak Harbor.

The Lutes will field two comparatively small guards in George Doebler and freshman Norm Juggert. What they lack in size the two easily make up in spirit and drive.

Doebler started against CPS and stands 5-11 and weighs 170, while

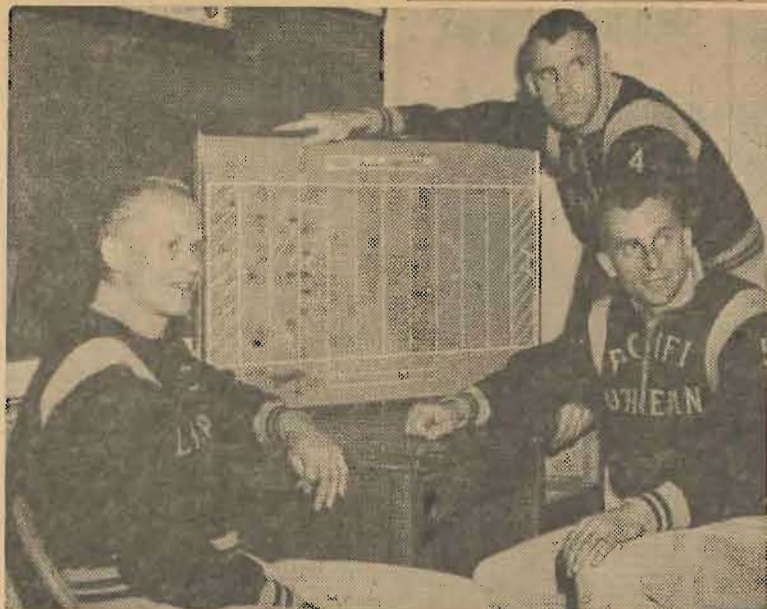
Juggert, from Tacoma's Lincoln, is 5-8, 182 pounds.

Letterman Gene Aune from Lacrosse will again start at center. Aune is an even six feet and tips the scales at 190 pounds.

The defensive lineup will be made up of freshmen Reynolds and Dick Johnson; sophomores Tom Mays, Ed Katz, Kent Tekrony and Lennon; junior Alexander; and seniors John Mitchell, Don Keppler, Bill Williams, and Jacobson.

Ron Coltom, a junior halfback, is out of action for several weeks with a broken vertebra.

It is still questionable if Bruce Nunes and Lou Blasie, who were injured against CPS, will see action.



MASTER STRATEGISTS at work are the coaches of the Gladiators' football team. From left to right are James Gabrielsen, head coach, and his assistants, Gene Lundgaard, who is also basketball coach, and Mark Salzman, also athletic director of PLC.

Seen from the Sidelines

by Jim Kittilsby

Any resemblance between this column and that of Oscar Ruhl's "The Ruhl Book," which appeared for many years in the Sporting News, is not coincidental. Your writer liked his column structure and hopes you do too.

PLC's Chuck Curtis, hoop star extraordinary, all-conference, all-American, all everything, is currently at training camp with the professional Detroit Pistons. Chuck, the number eight draft choice of the Pistons, has also received offers from Cleveland of the National Industrial Basketball League. The Cleveland quintet is coached by Johnny McClendon, who led Tennessee A. & I. to the NAIA championship last year. The squad will be composed, in part, of members of the A&I squad which edged the Lutes in the national finals.

* * *

Glenn Campbell, hard-hitting Lute shortstop, has won the national small college batting title with a phenomenal mark of .543, according to statistics recently released by the NAIA. The three year letterman from Seattle literally tore the cover off the ball after going 1 for 11 in the first three games.

* * *

Sportscaster Clay Huntington is currently teaching part-time in the Business Administration department of the college. Many who associate Clay with his evening TV show and his interest in PLC sports, are unaware that his primary vocational endeavor is in the field of advertising. Clay spearheaded the drive to get the franchise of the Class AAA Phoenix Giants transferred to Tacoma. . . Former Lute golfer, Bob Sparling, a member of PLC's 1958 conference champs, came from behind in the final day of play to win the Kalispell, Montana, Labor Day Golf Tourney, one of the largest amateur tourneys in the northwest. Sparling, on an engineering 3-2 program, is attending Oregon State. Lute teammates Jim Hill and Bob Romness finished high in the championship flight. . . Professor Vigness is still moaning over the collapse of the San Francisco Giants. Wouldn't you feel bad if you had World Series tickets and a plane reservation for San Francisco this weekend?

* * *

The umpire was extremely moody as he sat in his easy chair after the game, mulling over the verbal exchanges with hot-headed managers who questioned his integrity and his eyesight. His young son playfully jumped on his lap mutilating his evening paper, and in a fit of rage, he slapped the youngster. Did you know that from that time on the son has never set on the brutish umpire?

* * *

One of the fastest high school milers in the country will be performing in PLC colors next spring. Freshman Dennis E. Hanson from California has circled the four laps in 4:24. . . Roger Iverson, sparkplug of the Lutes' championship cage squads of the past four years, is teaching at Gig Harbor. Rog is married to a former PLC coed, Marsha Jensen. . . Word to the wise: don't get a hair cut during crucial ball games. Marv Jacobson did and lived to tell about it. Seems the barber got a bit excited during a Dodger rally in the playoff game, so excited he slashed poor Marv's ear with a razor. . . Former Mooring Mast sports columnist, Gene Hapala, is teaching in Battleground, Wash.

Action Begins In Inrtamurals

Evergreen Court, Third Floor, and Clover Creek were the first victors in the intramural program, which started last Monday.

Evergreen Court walked over the Fourth Floor 30-6 in their first fray.

The Third Floor whitewashed the Second Floor, 24-0, and Clover Creek won their contest by forfeit over the Married Students.

A mixup in the schedule resulted in the Tacoma-Western Parkland tilt being called off. The game is to be re-scheduled for next week.

The schedule for next week is: PICK UP SCHEDULE

Soccer is Game Of Powder Puff

Powder-Puffers no longer will have to strengthen their muscles for their classic football fray on Homecoming Day. Instead of toughness, the girls will have to prepare their shin-bones for the annual event has been switched to the game of soccer.

The event will be held Homecoming Day, Oct. 31, on the lower campus. It is tentatively scheduled to start at 9:00 a.m.

Marilee Anderson and Larry Poul are the chairmen of this contest. Competing in the event will probably be the Upperclass girls and the Freshmen girls.

The Upperclass girls will start turning out next Monday on the lower campus from 3:30 to 5:00. They will also practice on Wednesday.

Freshmen girls have yet to schedule a practice.

Coaches for the Uppers will be Marilee, Janice Osterloft, and Marta Hauge. For the Lower, the coaches will be Darlene Kelly and Nancy Farness.

During intermission, a tug-of-war is being planned between the freshmen and sophomore boys.

SUPPORT OUR ADVERTISERS

FOR SALE—'46 DeSoto, 4-door, good brakes, heater, new tires, replaced motor, \$135. Call Mrs. Kenyon at JU. 8-5261, extension 275. After 5 p.m., Call JR. 8-7091.

Bowling League Organizes Today

The Little Lutes Bowling League will be meeting today at 3:45 p.m. to get re-organized for the coming season.

Paradise Bowl at 70707 Pacific Avenue will again be the scene of operation. This is the second year that the mixed league has been bowling. Last year's 12 teams of three members each bowled a full eight months. One of the advantages of league bowling is the cheaper rates. All interested students are invited to participate.

SUPPORT OUR ADVERTISERS

FOR OFFICE SUPPLIES
C. Fred Christensen
BOOKSELLER AND STATIONER
932 Pacific Ave. BR. 2-4629
Tacoma, Washington

PART-TIME JOB OPPORTUNITIES FOR SALES-MINDED STUDENTS

SEARS, ROEBUCK AND CO. offers a part-time, rotational training program to Sophomore, Junior, or Senior students interested in merchandising. Will include work in sales, credit, receiving, personnel, auditing, and inventory control. An unusual opportunity to earn while you learn and serious minded students are urged to apply. Openings exist now in our Tacoma store. Contact the store's Personnel Manager or see your Placement Director for further information regarding Sears College Work-Study Program.



Of Two Minds

On the one hand, you have Thirsty G. Smith. Good taste to him means zest and zip in a beverage, sparkle and lift and all like that . . . On the other hand, T. Gourmet Smythe perceives good taste as the right, fit and proper refreshment for a Discriminating Coterie. So? . . . Have it both ways! Coca-Cola . . . so good in taste, in such good taste.



Et vous?
SIGN OF GOOD TASTE
Bottled under authority of The Coca-Cola Company by
Pacific Coca-Cola Bottling Company, Tacoma, Washington

Choir To Tour Midwest; Band Sets Concert Date

Again this year, PLC has many organizations that offer varied opportunities for musical expression and appreciation.

The "Choir of the West" is beginning its 33rd year with 38 old members and 31 new members, who were chosen after extensive auditioning by Professor Gunnar J. Malmin. This will be Mr. Malmin's twenty-third season as director of the a capella organization.

In addition to appearances on campus and in the surrounding Tacoma area, the choir will go on two out-of-state tours. Between semesters, a four day tour of British Columbia has been planned. Next April, the choir will take an eighteen-day trip throughout the mid-west. They will at that time join with other Lutheran choirs to sing in Minneapolis at the constituting convention of The American Lutheran Church.

Officers of the choir this year are Gerald Erickson, president; Byron Scherer, vice-president; Paula Fendler, secretary-treasurer; and Olaf Malmin and David Dahl, student directors.

The band, under the direction of Gordon O. Gilbertson, has 54 members. While the instruments are even-

ly distributed, B-flat clarinets and a bassoon are still needed. New music, both classical and contemporary, will constitute a well-balanced repertoire for a concert November 22; an annual trip to the Rainie State School in Buckley, a tour next semester and numerous other activities are also planned.

This year the chorus is larger than usual and is a type of experiment which will allow more students to sing. Out of 150 students who auditioned, 112 were accepted by Dr. R. Byard Fritts, the director.

The music that will be sung during the year is almost predominantly of a sacred nature. All of the selections are new and have never been heard in this region before. The works include numerous styles from all periods in music's history.

At the opening rehearsal of the chorus, Dr. Fritts made the following statement which sums up the objectives of the chorus. He said, "Make no mistake about it, this organization performs only the very finest of music, and we do not merely go through the motions—we learn the most professional choral techniques possible. We feel that we sing for pleasure, and for the pleasure of others, and that this is heightened by doing it well!"

News Editor Chosen

With this week's edition of the Mooring Mast, Pete Jordahl steps into the position of news editor.

A senior physics and math major, Pete served as proofreader for the student paper last year, and will continue with those duties this year also.

He is also serving as AMS treasurer and assistant in the physics lab.

Seaver Visits PLC

(Continued from page 1)

is a Fellow in the Royal Geographic Society.

Written 13 Books

Dr. Seaver's biographies deal with religious leaders (mostly from England) who have spent their lives in the Antarctic and Africa. His latest work was "David Livingstone: His Life and Letters." He has written 13 biographies and currently is writing one on Sir Wilfred Grenfell, the noted churchman who worked in Greenland.

He has traveled extensively in Africa and the Arctic regions. He is currently in the U. S. on a research commission from Yale University and on invitation from the Schweitzer Foundation.

Albert Schweitzer accepted the honorary degree Doctor of Humane Letter from PLC last year when President S. C. Eastvold made his tour around the world.

Regional Spurs To Gather Here

Marilee Anderson, who is currently serving her final year as Spur Director of Region I, will preside over a regional Spur convention here in Tacoma on November 6 and 7.

Marilee, a senior from Gig Harbor, Wash., and a resident of Ivy Hall, served as president of PLC's local chapter before being elected to her post at the national convention in 1958. As Director she supervises the activities of the Spur chapters in Washington, Oregon and Montana.

In November of 1958 she presided over the regional convention held in Bozeman, Montana. In addition to the coming regional meet, Marilee plans to make inspection visitations to the 15 chapters in her region. Next June she'll attend the National Convention at the State University of Washington in Pullman.


Spurs now includes 37 chapters in 10 western states and Indiana, with 1200 active members.



PARAGON PRINTERS, INC.
FINE PRINTING - LITHOGRAPHY
11802 PACIFIC AVE. PHONE LE. 7-7100

"CATERING TO THE PLC STUDENT"
BAILES UNION SERVICE
112th & Park Avenue Phone LE. 7-5951

RECORDS
LP's, Singles—large selection at
ABC ELECTRONICS
325 Garfield Street



IN A BASKET
BUSCH'S BASKET—for real convenience and for extra good eating, have a **BASKET AT BUSCH'S**
Supervised Parking Lot
CHICKEN GIANT HAMBURGER
OYSTERS, JUMBO PRAWNS JUMBO DELUXE HAMBURGER
FISH AND FRIES CHOICE OF SANDWICHES
Baskets filled with French Fries, cooked to order, and Toast
BUSCH'S DRIVE-IN RESTAURANT
38th & South Tacoma Way Tacoma, Washington
OPEN 7 a.m. till 2:00 a.m. weekdays; 3:00 a.m. week-ends

Doebler To Head Newly Formed AMS

The newly formed AMS Council held its first meeting on September 23 in Old Main Lounge. The Council is composed of the elected officers of all men's dorms and of the off-campus men and the executive council of AMS.

AMS dues were set at \$.25 per man per semester and may be paid to the treasurer of each dorm, or to the treasurer of the off-campus men's organization.


Executive AMS Council consists of George Doebler, president; Warren Willis, vice-president; Don Arstein, secretary; Pete Jordahl, treasurer; Roger Lundblad, student council; and Ken Gaal, I.C.C. representative.

PERMANENTS THAT SATISFY
HAIR CUTTING AND STYLING
Charm Beauty Salon
Blanche Lingbloom
413 GARFIELD ST. LE. 7-7475

STELLA'S FLOWERS
Flowers for All Occasions
12173 PACIFIC AVE. LE. 7-0206
(Foot of Garfield) We Deliver

Roofing Formica Paint Plumbing
Electric Sporting Goods Guns and Ammunition
PARKLAND HARDWARE
Glass Installation -- Pipe Cutting and Threading
121st and Pacific Avenue Phone LE. 7-3171

Art's Shoe Shop
315 GARFIELD STREET PHONE LE. 7-8771
(Opposite Parkland Post Office)
Boots - Casuals - Oxfords - Chukkas - P-F Tennis Shoes
Loafers - Little Heels - Hush Puppies
EXPERT SHOE REPAIRING

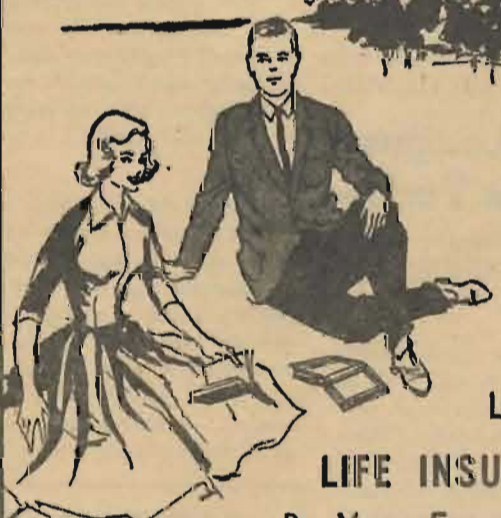
MARV TOMMERVIK'S
PARKLAND FUEL OIL SERVICE
 **CHEVRON GASOLINE**
LUBRICATION
12002 Pacific Avenue Phone LE. 7-0256

AGENT FOR LUTHERAN MUTUAL LIFE INSURANCE
GOOD LUCK FOR THE STUDENTS
EDWARD FLATNESS
Box 2275, Parkland LEnox 1-0826

C.O. Lynn Co.
MORTUARY
717 TACOMA AVE. Phone MAJN 7745

LAURINAT'S apparel
We Outfit Coeds
406 Garfield LE. 7-5317

Young's Gift Shop
UNIQUE GIFTS from many lands
516 Garfield St. LEnox 7-5559
(Across from Old Main)

AS YOU PLAN YOUR FUTURE—

Let
LIFE INSURANCE
Be Your Foundation For Financial Security
"An Old Line Company — It Does Make a Difference"
LUTHERAN MUTUAL LIFE INSURANCE COMPANY
HOME OFFICE — WAVERLY, IOWA