



VOL 7 NO 4 Pacific Lutheran University October 2, 1969

PLU School Of Nursing Receives Grant

A \$250,000 grant from the United States Public Health Service has been awarded to the Pacific Lutheran University School of Nursing, according to U. S. Senator Warren G. Magnuson (D-Wash.).

The funds will be administered over a five-year period for curriculum revision and improvement within the baccalaureate nursing program at PLU. \$45,000 will be available for the current school year.

Dr. Doris Stucke, director of the school of nursing, will be in charge of the project. According to Dr. Stucke, the funds will allow five members of the present nursing faculty to devote 40 per cent of their time to the curriculum project by providing for the hiring of two additional full-time faculty members, along with additional clerical personnel. The director will allot 20 per cent of her time to the curriculum development project.

Dr. Stucke pointed out that the need for additional funds has become apparent due to the dramatic enrollment growth within the school of nursing in the past three years. Number of nursing students has doubled during that time from 72 in 1966 to 140 this year.



From left--Dorothy Cone, Dr. Doris Stucke and Linda Olson (nursing) discuss curriculum development grant.

The additional need cannot be met through regular university resources because the school of nursing requires a lower teacher-student ratio than other departments, she added.

"These funds will allow us to develop a program to help students be more effective as persons as well as professionals," Dr. Stucke said.

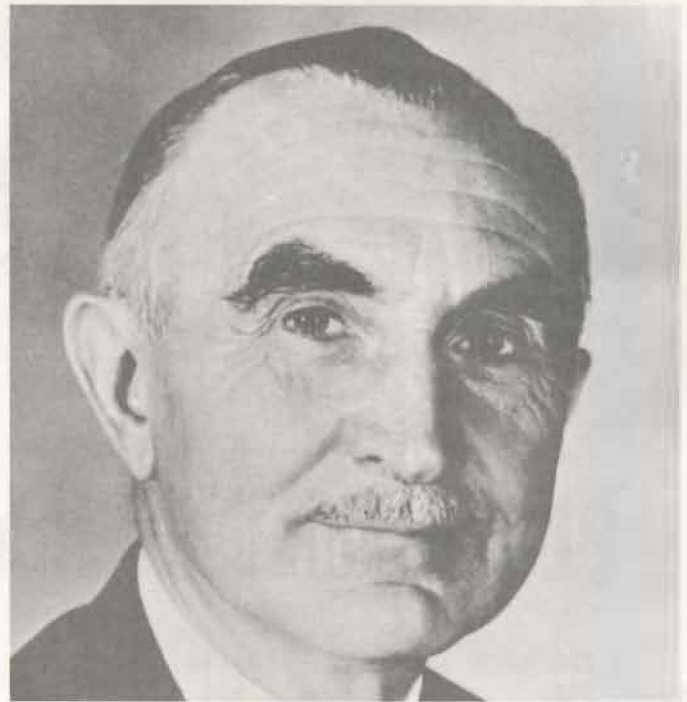
THE ROUNDTABLE

MAURICE LOKENSGARD, new member of the communications arts faculty, is a patient at St. Joseph's Hospital. . .we wish him a speedy recovery. . .A. DEAN BUCHANAN (v.p.-bus.) is in Washington D. C. this week attending an Institute on Federal Grants for Education Institutions . . .the event is being sponsored by the Department of Health, Education and Welfare . . .PRESIDENT WIEGMAN was in Chicago last Friday attending sessions of the Lutheran Council--USA. . .he is a member of LCUSA's Church and Community Planning Commission . . .this Friday DR. WIEGMA will represent PLU at the inauguration of Dr. David McKenna as president of Seattle Pacific College. . .while on the subject of inaugurations it has been decided that the inauguration of DR. WIEGMAN will take place on March 16, 1970, preceded by three or four days of special events. . .more on that later. . .but reserve the date. . .DR. RICHARD MOE (Dean, Prof. Studies) was in Seattle Wed. and Thurs. of this week attending sessions of the Western Association of Summer School Directors. . .PRESIDENT WIEGMAN has been appointed to the Board of Control of Concordia College, Portland. . .this is equivalent to our board of regents. . .CONGRATULATIONS. . .MILTON NESVIG, MARVIN SWENSON, and JON OLSON have been appointed to serve on the Homecoming Committee. . .FAREWELL to the little charmer in the registrar's office, MARY ICE. . .she leaves Friday for Fort Knox, Kentucky where her husband will be stationed. . .MARY has been with us for over three years and we'll miss her. . .we wish her Godspeed. . .also last week we neglected to say Goodbye to JEAN SCAFE, former secretary to DR. LEASURE. . .best wishes to her and our gratitude for faithful service. . .WELCOME to new employees. . .VIOLA BERRY, LUCIA SCHROEDER, DOROTHY SNYDER, LEONA GANGLE, BETTY KELLY, ALBINE CLEMONS, SADAKO ZIELSTORF, DAVID BARNARD, MONICA CLAWSON, GLENNA WUS ERBARTH, and LORRAINE ZENTNER all of food service, B RNEY CARR, maintenance, EMMA CELMS and ALLENE WILSON, library. . .

ADMISSIONS OFFICE NEEDS MORE 1969-70 SCHOOL CATALOGS

The PLU admissions office urgently needs more 1969-70 school catalogs. Please check your offices for extra copies and bring them to the Information Desk.

Vietnam Moratorium Day Speaker Is Sen. Morse



Former U. S. Senator Wayne Morse will be a guest speaker at PLU during Vietnam Moratorium Day Oct. 15.

Arrangements for the special day were approved by the PLU faculty Tuesday morning at the request of the student body, represented by student body president Barney Peterson.

Sen. Morse and a high ranking general from the Tacoma area will present the conflicting sides to the Vietnam question. Also included on the schedule are panel discussions, debates and small group discussion, concluding with a peace service in Eastvold Chapel at 4 p. m.

Purpose of the moratorium day is an attempt to "help bring peace in our time; a day when the campus community will study the implications of the war and U. S. policy concerning the war," according to Peterson.

PLU is one of four schools in western Washington and between 4-500 schools throughout the nation planning a moratorium day. In addition, 12 of 13 American Lutheran Church-affiliated schools will participate in the effort.

European Tours Are Feature Of 1970 Interim Schedule

Study tours to Italy, Greece, France and Germany are among 133 imaginative course and tour offerings arranged for the 1970 interim, which begins Jan. 5.

The interim, a one-month special study period considered one of the vital advantages of the new 4-1-4 curriculum program, provides freedom for the student to develop his interests by concentrating on a single course. It also allows faculty members to teach in areas not always available during the regular semester.

Philosophy professors George Arbaugh and Curtis Huber will take a group of students to Greece for a study of classic Greek thought. A tour of Rome and Florence is being undertaken by history professors Philip Nordquist and W. C. Schnackenberg. The trip to Germany with Prof. Rodney Swenson will provide language study at the Goethe Institute in Munich. PLU and Whitworth College are cooperating on a tour of France to study the romantic French language first hand.

Several tours are being arranged within the U. S., including two separate tours to New York City to study theater and the United Nations. Navaho Indian culture, pioneer history, and urban planning are also among the course offerings that will take students "on location."

The remainder of the interim course offerings will be conducted on or near the PLU campus, but the subject matter remains innovative. In many cases the interim offerings are experimental and plastic, and students are expected to approach the courses with open minds and a willingness to give to the course more than is simply required.

Students also have the option to file a plan of action for free study during the interim period, but such a program will not count toward graduate requirements.

* * * * *

ANNUAL CHILDREN'S THEATRE PRODUCTION TO FEATURE "BEAUTY AND THE BEAST"

The third and fourth weekends of October are the dates for the fall 1969 version of the PLU Children's Theatre, presented by the department of communication arts under the direction of Eric Nordholm.

The production this year is the classic fairy tale, "Beauty and the Beast."

Public performances are scheduled for Oct. 18 and Oct. 25 at 2:30 p.m. in Eastvold Auditorium.

* * * * *

LEAGUERS TO BE ON CAMPUS SATURDAY

Close to 1,000 leaguers from Washington, Oregon, California and Montana will visit the PLU campus tomorrow during the League Day, an annual event arranged by the PLU admissions office.

Special guest speakers for the event are Dr. Eugene Wiegman, PLU president, and Bob Turnbull, well-known throughout the country as the "Chaplain of Waikiki Beach."

Turnbull, an athlete, actor and columnist from Waikiki Beach, Hawaii, along with Dr. Wiegman, will speak during a scheduled hootenany in Olson Auditorium beginning at 10 a. m.

Other events include swimming, campus tours and attendance at the PLU-Lewis and Clark football game Saturday afternoon at Franklin Pierce Stadium. The game begins at 2 p. m.

WEDNESDAY NOON MUSIC FEATURES ORGANIST, BARITONE

Organist David Dahl and baritone William Sare, both members of the PLU music faculty, will be featured during the next Wednesday Noon Music concert Oct. 8 in Eastvold Auditorium.



PLU, UPS cross country runners poised as the gun goes off starting Saturday's race.

* * * * *

PLU HARRIERS POST FIRST WIN;
UPS VICTIM OF 25-33 LOSS

Although their best individual finish was third, PLU's cross country runners defeated University of Puget Sound in a dual race on the PLU campus Saturday, 25-33.

The Lute's depth was the deciding factor, as PLU's six runners finished third through eighth. UPS grabbed the top two spots but then had to settle for ninth and tenth.

Finishing third for the Lutes was Bruce Pyrah, a freshman from Federal Way. He was followed by Bob Matson, Chris Buck, Don Millholland, Kirk Sandburg and Bob Wright, all of PLU.

* * * * *

Knights Open NWC Title Race Against Lewis And Clark

Pacific Lutheran's undefeated Knights open their Northwest Conference season tomorrow afternoon at 2 p. m. at Franklin Pierce Stadium.

The Knights will be facing the Lewis and Clark Pioneers, a team that has given PLU fits in the past four years. Always a conference power, the Pioneers have won five and lost only one in the series with PLU.

Last year the Knights lost a 6-0 decision on a muddy, rain-drenched field in Portland.

This year, however, Roy Carlson's gridders are favored to win the game, as well as the conference title. The outcome of the contest will go a long way toward determining the potential NWC titlists, as Lewis and Clark lost to the other top conference power, Linfield, 14-0 last Saturday.

The Knights will rely on a proven offense led by sophomore quarterback Jim Hadland and All-Northwest halfback Dave Halstead. The home team also has the best rushing defense and all-around defense in the league so far this year.

Following the Lewis and Clark game, the Knights will be on the road for four straight weeks, including a battle with cross-town rival University of Puget Sound Oct. 18. They return to Franklin Pierce Stadium Nov. 8 against Willamette, last year's conference champions.

BIRTHDAYS. . .How Old Are You?

Larry Allen	October	1
Barbara Gordon		2
Arthur Gee		3
William Gilbertson		4
Dorothy Snyder		5
Margaret Coutu		6
A. D. Buchanan and Mary Ice		7
Dawn Fredericks		8
Judd Doughty		10
Barbara Phillips and Percy Johnson		11
Alma Holycross		12

REDUCED SEASON TICKET PRICES OFFERED
FOR SEATTLE SYMPHONY ORCHESTRA CONCERTS

The Tacoma Philharmonic is once again sponsoring the Seattle Symphony Orchestra, Milton Katims, conductor, in a series of four evening concerts beginning Oct. 22.

The concerts will be held in the Temple Theater, Tacoma, at 8 p.m., each evening.

Cellist Raymond Davis opens the series Oct. 22; Itzhak Perlman, violinist, performs Nov. 19; Jan. 29 the orchestra will be directed by guest conductor Serge Fournier, and pianist Geza Anda concludes the series March 11.

Season ticket prices are \$18, \$14, \$11 or \$8 (students). As in the past, the Tacoma Philharmonic is offering PLU students, faculty and staff \$14 tickets for \$10. If interested, call Jerry Kracht (music), ext. 684. Deadline for orders is Oct. 8.

* * * * *

NETS AGENCY TO HANDLE
PLU TRAVEL REQUIREMENTS

The Northwest Educational Travel Service (NETS), a service of the Northwest Association of Private Colleges and Universities (NAPCU), begins its second year with the approval of all national and international travel regulating agencies.

NETS is also under new management this year. It is being headed by Dr. John Dart and Dr. George Carboni of Portland State University.

According to President Wiegman, PLU has given NETS most of its travel business from the beginning. Because of the new advantages in experience with meeting the needs of educational institutions that NETS now offers, all group and travel arrangements not already in process that involve PLU personnel and funding will be directed to NETS.

NETS is conveniently available by collect telephone call to Portland (503-227-2542).