



This New Addition to the Campus Is the New Headquarters for Aspiring Lute Scientists

## Soph Service Honor Group AWS Project Honorary Plans Nat'l Recognition

A Sophomore Service Honorary will be sponsored by the Associated Women Students, it was decided at an important meeting of all AWS members, held Tuesday noon in the Chapel.

Patterned after a national organization of its kind called "Spurs," the Honorary on our campus will, after a required period of apprenticeship, seek membership in the "Spurs."

A maximum number of twelve sophomore girls will be chosen soon for membership, to be decided mainly on the basis of interest in and participation in college activities. Their project will be to promote school spirit and support all activities in which the student body participates, to foster among the women of the college a spirit of loyalty and helpfulness, and to uphold all traditions of the college.

Also decided upon at Tuesday's meeting were monthly AWS meetings to be held on one Tuesday night of every month. Each meeting will include a program in addition to regular business.

Two AWS officers, Eleanor Hellbaum, president, and Betty Reiman, social chairman, and Miss Grace Blomquist, AWS adviser, will journey to the University of Washington campus next Friday and Saturday, Nov. 14 and 15. At that time a College-Day Conference of all such AWS officers from statewide colleges and universities will meet for the purpose of discussing plans and problems of College Day, held on most campuses every spring, for the purpose of acquainting senior high school girls with their future college activities.

## \$40,000 Disposal Plant Began Operations Nov. 1

PLC's new \$40,000 sewage disposal plant, that new concrete structure on the lower campus directly north of the gymnasium, went into operation on November 1.

With a capacity large enough to take care of all buildings now on the campus, as well as of any to be built in the future, the plant was built in such strict accordance with state specifications that after the final disposal process is completed the water is entirely safe to drink. However, a heavy chlorine odor and taste, as well as a muddy appearance would be present.

Entering the plant through a pipe at the top of the structure, the sewage is dumped into the smaller of two tanks for its initial chlorination and decomposition. Final decomposition takes place in the largest tank, from which the sewage flows into the airtight tank, where

## 625 Students Is Record Number Now Enrolled In Science Courses

Probably the attraction of the new \$200,000 Science Hall is one of the main reasons for the fact that a record number of students are taking science courses at PLC this semester. A total of 625 Lutes are enrolled in biology, chemistry, physics, and mathematics, according to figures from the registrar's office.

Of course, some are counted more than once because they are taking two or more science courses, but this still represents a three-fold increase in the total science enrollment over the times before the new building.

### 155 Take Zoo

One class, general zoology, is so large that it has had to move to the more roomy Chapel to hold its lectures. When Prof. Vernor Johnson takes roll, he has to call 155 names, nearly one-fifth of the whole student body.

Inorganic chemistry comes a close second with its 133 students under Prof. A. W. Ramstad. However, this group is divided, so that those who had high school chemistry and those who haven't meet on different days. Thus there is room for them in the lecture room of the science hall.

On the other end of the ledger, the modern physics class has a roll of three students, while the class called "heat" has nine members.

### Who's on First

The four divisions take up the three floors of the building, with physics and mathematics sharing the first floor, Biology takes second, and chemistry, third floor.

The building, noted for its huge windows, got under construction in May, 1946, and was occupied this fall, with several rooms being completed only last month. It was designed by Lea, Pearson and Richards in conjunction with the teach-

A large paddle stirs it up to let air and kill any final bacteria that may be present. The final step sends the water into three gravel pits, where any final solid matter is sifted out. The water pours out of the gravel pits into a ditch which transports it to Tule Lake. Several days' rest is given to the water before the entire process is completed.

Since the equipment is entirely automatic and of the most modern type available, maintenance of the plant will be comparatively simple, consisting mostly of routine daily inspections by Mr. Kenneth Jacobs and his crew.

The plant was designed by Lea, Pearson and Richards, Tacoma architects, and engineered by C. W. May, registered engineer of Seattle. The building contract was let to Joe Lundberg of Seattle, a well-known contractor of disposal systems.

ers in the science department. George Warter of Tacoma was the general contractor.

To handle the enlarged science department since 1940, requires not only a good building but also a good faculty. This year there are eight members, four of them new.

**Worked on Atom Bomb**  
Dr. Olaf Jordahl (University of Wisconsin) has headed the physics department since 1940, with the exception of two wartime years when he was working on the atomic bomb at the University of California. Mr. Harry Adams (Kansas State College) started this fall as instructor of mathematics.

Heading the biology department is Dr. Burton Ostenson (Michigan State College). Prof. Johnson (Northwestern University) teaches zoology. Dr. Harold Lerasas (University of Michigan) takes time off from his dentistry to teach anatomy. Mrs. Chester Creso handles the overflow zoology classes.

In the chemistry department, Prof. A. W. Ramstad (Univ. of Wash.), a veteran of 21 years of service to PLC, and Dr. Robert Ostenson (Michigan State College) share teaching honors.

## Curtain To Rise On Plays Nov. 19

November 19 has been chosen as the date for the first public presentation by the Curtain Call Club this year.

Four one-act plays are on the program, sponsored by Alpha Psi, and these will be presented in the Student Union building.

Such thespians as Joe Hill, Cliff Ewing, Jess Thompson, Vonny Denow, and Gerald Larson will take stellar roles in the plays, which will first be given exclusively for the enjoyment of the Curtain Callers on Monday, Nov. 17, at their regular semi-monthly meeting.

At last Monday's meeting, the dues for the year were decided upon, and membership cards were given to those who were prompt with their payment.

## Choirs Schedule 3 Nov. Concerts

Hard at work on the concert program to be sung on the California tour to take place in February, the PLC "Choir of the West" will take time out to present a short group of these selections for Sunday's Science Hall dedication.

A full concert is slated for Sunday afternoon, Nov. 23, at the Senior High School in Bothell, north of Seattle.

PLC's "Junior Varsity" choir, comprised of 80 voices, will make its first public appearance at the new building on Sunday at 8 p.m. in Tacoma's Central Lutheran Church. Tentative plans are now being made for a Christmas concert by combined campus musical organizations, to be held December 14.

## Spiritual Emphasis Week Speaker Stresses Worth Of Serving God

"War has been raging since before creation between God and Satan, between good and evil. We belong by grace to the army of The Lord of Hosts; by birth to the Army of Satan."

These thoughts were emphasized by the Rev. Alvin N. Rogness on Wednesday evening during his address in the Chapel. He stressed that we must give our lives for something and there is only one thing that is worth the giving, God. "In the battle between good and evil it is up to us to range ourselves on the side of right," he said.

The Rev. Mr. Rogness, president of the Board of Education of the Evangelical Lutheran Church, has been the main speaker during Spiritual Emphasis Week. Five years ago he visited PLC and was much impressed. However he is "much more impressed now. I know of no Christian College," he said, "short of the last five years, ought to be as interesting as here at Pacific Lutheran College."

Continuing in this vein, the Rev. Mr. Rogness said that today's post-war youth is vastly different from the college youth after the last war. He stressed that the people of the post-war period for the past 1948 contained an air of continuous celebration and riotous living to the college

atmosphere, the young people that returned to school after this past war impart an air of seriousness and sobriety to school life.

The Rev. Mr. Rogness, who is pastor of Trinity Lutheran Church of Mason City, Iowa, has presented a series of talks entitled "Christian Life As Warfare." Wednesday's talk was on the "Nature of the War;" Thursday's topic was "Alternatives If We Do Not Fight," and Friday's talk on "What One Man Can Do."

The first of these was given Wednesday morning during the Chapel period and continued on Wednesday evening in the Chapel. Thursday's talk was treated in the same manner, and the series will be finished tonight at seven o'clock. However, Lutes will have another chance to hear the Rev. Mr. Rogness when he delivers the Sunday morning sermon at Parkland's Trinity Lutheran Church.

## Camp Waskowitz To Be Rerect Scene For LSA

Looking forward to Nov. 21-23, the members of the PLC Lutheran Student Association are planning to have a big representation at the annual Pacific Northwest LSA meeting to be held at Camp Waskowitz, near North Bend, Wash.

The University of Washington LSA will be host for the outing. The theme being "Jesus Christ Is Lord." Keynote speaker during the three days of sessions will be Dr. Ruth Wick of Chicago. Dr. Wick is the Student Service Commission adviser of the Lutheran Students Association of America.

During the meeting, the program will be Miss Anne Knudson of the PLC faculty who is slated to lead one of the discussion periods. Lutheran students from at least ten college campuses in Washington, Oregon and Idaho will be attending the convention. President Betty Lou Riecke of the PLC group announced this week that a bus will be chartered to transport all the Lutes who will attend direct to the camp. Camp Waskowitz is located one mile east of North Bend, close to Snoqualmie Falls.

The registration fee for the meeting will be five dollars for the three days, which includes board and room. Students are urged to sign up before Nov. 12 if they intend to attend.

## Campus Calendar

FRID., NOV. 7—Spiritual Emphasis Meeting, Chapel, 7 p.m. Reception for faculty members, 8 p.m.

SAT., NOV. 8—CWCE vs. PLC at Ellensburg, 2 p.m.

SUN., NOV. 9—Dedication of Science Hall, Rally Program, 4 p.m.; PLC Chorus, Central Lutheran Church, 8 p.m.

MON., NOV. 10—Senior Class Meeting, M-109, 12:30 p.m. Spanish Club, Reception Room, 7 p.m.

TUES., NOV. 11—Freshman Class Meeting, Chapel, 12:30 p.m.

WED., NOV. 12—Church Bazaar, Trinity Church, 5 p.m. LDR Meeting, Chapel, 7:15 p.m.

THURS., NOV. 13—Campus Devotions, Chapel, 12:30 p.m. "So Stoops to Conquer," Lincoln High School, 8:15 p.m.

FRID., NOV. 14—End of the first quarter. Senior Class Mixer, Student Union, 8 p.m.

## Dignitaries Due For Hall Dedication

### Science Building Rites Scheduled For 4 p.m. Sunday

Leading educators, ministers, and other dignitaries and friends of PLC will be guests of the college Sunday when the institution observes another milestone in its history—the dedication of the Science Hall.

Final arrangements for the event are practically complete, and the building itself is getting a good house-cleaning in preparation to its being host to hundreds of visitors throughout the day.

The black-top sidewalks around Memorial Gymnasium have been laid, and the main campus and other buildings will be in good order, according to Superintendent of the Grounds Kenneth Jacobs.

### March Down Hill

Festivities will officially get underway at 4 p.m., Sunday, as the long line of faculty members and invited guests, decked out in academic regalia, march down the causeway from the upper campus as the band plays Wagner's processional "Tannhauser."

After they have taken their places in the gymnasium, Prof. A. W. Ramstad will deliver the invocation and will officially welcome the guests and visitors. Dr. H. L. Foss, president of the college board of trustees will give the gospel lesson, to be followed by the keynote address of the afternoon by Dr. Conrad E. Bergendoff, president of Augustana College and Seminary, Rock Island, Ill.

### Bring Greetings

Bringing greetings from the Board of Education of the Evangelical Lutheran Church, of which he is president, will be the Rev. Alvin N. Rogness. Greetings will also be read from some of the dignitaries who expressed their regrets that they would be unable to attend.

Letters of congratulations, acceptances to the invitations or regrets that they wouldn't be able to attend, have been arriving at President S. C. Eastwood's desk all week. They indicate that there will be a fairly sizable number of dignitaries participating in the procession.

The final part of the dedication program will take place in front of the Science Hall. The band will play the "Coronation March" as the academic procession returns to the upper campus. A brass quartet will play the "Call to Order," after which Dr. Bergendoff will utter the actual dedication ceremonies.

Open house around the campus, particularly in the new Science Hall, will close the day's dedication activities.

"All students, their families and (Continued on Page Four)

## Candy, Text Books, Pencils, Laundry? Student Union Book Store Sells 'Em All

Candy, Kleenex, combs, cologne, baby's bottles, and many other things are sold at rates listed for Life, Time, Fortune, and the Reader's Digest.

The biggest single customer of the shop is Uncle Sam who pays the bills of the veterans on the campus. All required equipment for study is provided, such as books and supplies, but he doesn't extend his benevolence to the nice little extras or to replacing those things once issued and now lost. This year, issuance of filler is limited to a maximum of ten packages, so watch those notes and caricatures.

Johnny, who, incidentally, does all the ordering and buying for the store, is aided in the typing of orders by Virginia Leever, his bride from Ephrata. While he is in class, either Don Pederson, Alma Heen, Gary Damm, or Ralph Haugen is behind the counter.

Some bright person commented that the book store did everything but the washing and ironing. For his information, there is also a daily dry cleaning service, and the laundryman comes by once a week.

So far, 24 gross (3,456) pencils have been sold, and an average of 888 loose-leaf fillers are vended a day. A subscription to any magazine



# Sports Slants

By DICK WEATHERMON

In view of the fact that the Gladiators from Pacific Lutheran College took advantage of a brief furrow from the gridiron wars last weekend, and there is nothing to say about our Alma matron, it might prove interesting to take a squint at some of the other grid battles in the current campaign.

### CWCE 7, St. Marda's 0

The ever-improving Rangers from Lacey kept getting tougher, and according to reports, the Wildcats from Ellensburg had to work harder than a bull's tail in fly time to eke out a tight 7-0 win.

### W.W.C.E. 41, Whitworth 0

Dr. Lappenbusch's fine Viking crew from Bellingham played their usual stellar type of ball, and ran over the Pirates from Whitworth to the tune of 41-0.

### University of British Columbia 26-

### Lewis & Clark 6

No comment.

### U.S.C. 19, U. of W. 0

Saw this one personally, and it was the Trojans all the way. Their hard-running, swift-legged backs made consistent gains through the Husky eleven, and their tackling and pass defense were superior to that of the Welch-men.

### W.S.C. 35-Portland U. 0

Phil Sarbo's win-hungry Cougars started to roll and once rolling, couldn't be stopped, as they trampled the Portland Pilots in the mud at Portland last weekend. Their coming tussle with the U. of W. may prove to be one of the thrillers of the season.

### Splints . . .

The Lutheran injury list keeps growing. Now it looks as if Carl "Bud" Hatley and Bob Andrew,

both starting wingmen, will be out for the Ellensburg tilt. Hatley came up with a knee injury in the Lewis & Clark disaster and Andrew broke his shoulder the same evening.

"Big Jack" Proud, regular left tackle, has been troubled for a month or more with a back ailment, but after last week's lay-off, he may be back in top shape.

### Orchids . . .

To Mr. and Mrs. Walter Perry and their sons Bob and "Rink", of Seattle, who won the hearts of the several Lutheran gridlers, and "Bowser", who spent the past weekend with them.

The hospitality of these Gladiator-booster will long be remembered by Don A'Andrea, Jack Osterander, Jack G. Yot, Eldon Kyilo, Roy Skibo, Walt Griffith, Steinar Gorud, "Bowser" Wohltheiter, and yours truly.

### Chaps . . .

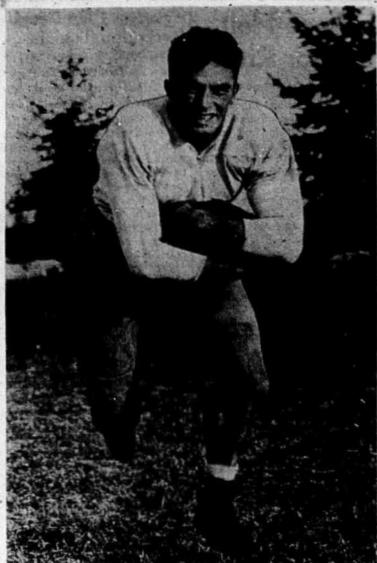
See by the papers that the Elma High School football team, coached by George Fallstrom, ex-Lute tackle, took a 27-0 decision from the Raymond High squad, which is handled by Don Sloan, ex-Lute guard.

Congratulations, "Big George", and condolences, Don!

### KNUTSON TO SPEAK

The Reverend Joseph L. Knutson of Ames, Iowa, will be the speaker at the Preaching Mission meetings sponsored by the Tacoma Lutheran Brotherhood, November 9-14 at Central Lutheran Church.

The meetings will begin at 8 p.m. and buses will leave the college each evening at 7:30 to transport those who wish to attend.



### Triple Threat . . .

Jack Guyot proves his versatility by being equally proficient in handling a pigskin, a base fiddle, or a columnar's quill. On the athletic corner of the triangle, "The Rio" has carried the sphere for an average of better than five yards per try this season, and scored a total of 24 points for the Gladiators. Jacobs on the "Ballard Burns", and a soph at P.L.C.

### 1800 P.L.C. - U.W. Hoop Game Ducats Go on Sale Today

Tickets for the game with the University of Washington basketball team are now on sale. It was announced today by Cliff Olson, athletic director, "This is a special pre-gamble sale." Olson explained, "for the families of students and friends of the college."

Members of the student body, faculty and staff who have activity tickets need not have special tickets for this game. They will be admitted free by showing their activity card.

But Mr. Olson further stated, "We have only 1,800 general admission tickets for this hoop game which will mark the dedication of Memorial Gymnasium."

The Latest and Finest in RECORDS and Sheet Music  
**TED BROWN MUSIC CO.**  
1121-23 Broadway

### ORANGE BOWL

WE FEATURE  
Delicious Fruit Drinks  
Real Oranges, Bananas, etc.  
ALSO  
Home-Made SANDWICHES  
MILKSHAKES  
9th and Commerce BR 6555  
OPEN TILL MIDNIGHT

### BOY and GIRL BOWLERS!

ONLY 20c A LINE  
TEAM MATCH  
EVERY AFTERNOON  
AT THE  
**UCYC**  
Ninth and Pacific  
STRAIGHT LINES, 23c  
Use Your  
RECREATIONAL  
ROOM and SNACK  
COUNTER  
10:30 A.M. to 11:30 P.M.

### Pep Club Calls For New Marchers

"Last call for new members!" That's the warning of Delores Langesh, newly-elected president of the Pep Club. The marching group is looking forward to its first appearance on Dec. 5 at the P.L.C. University of Washington basketball game.

Originally, the marchers had planned to perform at the Homecoming halftime, but upon seeing the Stadium field covered ankle-deep with water, the debut was postponed. However, Delores assures fans that the Dec. 5 appearance will be made, rain or shine.

Other officers chosen at the meeting held Tuesday night were: Delores Wallis, vice president; Judy Gilson, secretary and Helma Berg, treasurer.

Delores said that an emblem may be awarded to girls who participate in this activity. A new name for the club will be an important matter on the agenda of the next meeting.

Patronize Your Advertisers

**SEARS**  
Tacoma Wash.

Campus Sports Togs and Athletic Equipment  
**WASHINGTON HARDWARE CO.**  
★ Sports Shop  
918-20 Pacific

### Mecca Cafe Always Open

13th and Commerce Tacoma  
A. G. Hoskins, Prop. MA 7215

MacGREGOR - JANTZEN - LORD JEFF  
ALL WOOL SWEATERS  
MUSKRAT SPUN AMHO SWEATERS  
**Winthrop Men's Shop**  
In the Winthrop Hotel Bldg.  
Just Received -  
New Patterns in Jantzen Ski Sweaters

# Injuries Weaken Lutes As Central Game Looms

Plagued by an ever-growing cripple list, the Pacific Lutheran Gladiators will trek to Ellensburg to face the rough and tough Wildcats of Central Washington College in a conference tussle to be played on Kodoa Field tomorrow afternoon at 2 p.m.

The Wildcats, always a threat, will be at their very best tomorrow as far as enthusiasm and hometown support are concerned. It's CWCE's Homecoming, promised to be the biggest celebration in the institution's history. The Cats will be doing everything within their power to entertain Homecoming fans with victory.

To make things worse, the Lutes will be without the services of Bob Andrew, ace right end, who broke his shoulder in the Lewis & Clark tilt and will be out of action for the remainder of the season.

Carl Hatley, starting left end, is still on the doubtful list with a banged-up knee, but he will see limited play tomorrow. Jack Bratlie and Reid Ponton are also wobbling from injuries that will keep them from much action.

The Central Wildcats, very strong

defensively, have 24 lettermen returning from the bunch that won the 1946 Winco grid penant.

They also boast a powerful running attack, spark-plugged by Jim Carmody and Ed "Crazy Legs" Bartlett, whom Lute fans will remember as the fly in the ointment in last year's meeting of the two squads. In that contest, Bartlett ran 90 yards through the entire Parkland eleven to score the winning counter in a game that ended 27-20 in favor of the Centralites.

If the Lutes can get by the Ellensburgers, they will be a virtual cinch for half-interest in the Winco crown—perhaps the whole thing.

Probable Gladiator starters will be Dinmore and Mason, ends; Kyilo and Proul tackles; Hagen and Carboe, guards; D'Andrea, center; Bratlie, quarterback; Rose and Spear, halfbacks; and Guyot, fullback.

### Lutes Rated Top Small N.W. Team

Pacific Lutheran College boasts the top small college football team in the Pacific Northwest.

No, that's not just something somebody around P.L.C. has said. It's the rating of "The Monday Morning Quarterback," a weekly grid sheet published by National Ranking, Inc., of Mobile, Ala. Only the state universities and state colleges have higher ratings in the Northwest.

According to T.M.M.Q. the Gladiators have a rating of 42.8 as compared to 42.4 for Eastern, 39.0 for Western, 34.4 for Central, 23.7 for Whitworth, and 16.3 for St. Martin's. Other Northwest grid powers were rated: Portland University, 32.3; Puget Sound, 24.3; Willamette, 37.8; U. of Idaho, 40.8, and Montana State, 39.2.

In the Winco loss scoring department, Lute Fullback Jack Guyot is tied for the lead with Whitworth's Vern Tucker. Both boys have 24 points to their credit.

Incidentally, P.L.C. remains the only undefeated college eleven in the state.

IT PAYS TO LOOK WELL.

**Parkland Barbers**  
MARSH and KNUTSEN

FEATURING  
WILSON  
ATHLETIC  
EQUIPMENT

DILL HOWELL  
SPORTING GOODS  
929 Commerce

JEWELRY GIFTS  
**Parkland Jewelers**  
Watch and Clock Repairing  
GUARANTEED  
R. J. Haner, Prop.  
239 Garfield, Parkland, Wash.

**PARKLAND GRILL**  
Good Luck, Boys!  
SEE YOU AT ELLENSBURG

**Bankers Trust BARBER SHOP**  
In lobby . . . 1111 Pacific Ave.  
Thoralf Hagen, manager  
Parkland, Wash.

★  
Hair Cutting - Shaving  
Shampooing - Massaging  
Tacoma, Washington

Try . . .  
**72nd St. Cleaners**  
We Will Let You Be the Judge  
7047 Pacific Tacoma

SKI JACKET Special \$6.50  
PETERSON'S MEN'S WEAR  
Garfield Street Parkland

Hey, Look . . .  
ELVIN MYRLAND JOHN ROALKVAM  
"SWEDE" CARLSON

# The Bug

A FREE Hamburger and Milkshake for You  
(It Will Pay for You to Watch This Ad)

**SPECIAL!**  
**College T-Shirts**  
GARFIELD VARIETY STORE

DON'T FORGET TO INCLUDE  
**BUSCH'S DRIVE-IN**  
IN YOUR WEEKEND PLANS  
Popular Food at Popular Prices  
3505 S uth Tacoma Way GA 1513

### Two More Engagements Announced By P.L.C. Couples As Time Hurries On

One by one the weeks are struck off the calendar and one by one the names of P.L.C. students are struck off the list of eligible bachelors and maids. No one can say that Diana is not showing favor these days. (Consult any student of World Lit. for past examples). The latest to feel the point of Cupid's arrow are Ruth Velvick, a sophomore from Tacoma, and Bill Berwald, also of Tacoma. Ruth is a member of the DRG cabinet, having transferred to P.L.C. from the State College at Fullman after her service in the WAVES during 1944-46. Ruth is a graduate of Lincoln, and, by the way, her fiancé is a cousin of our ASB-presy, Walt Kunschak. Bet you never thought you'd see your name in the society column, Walt!

What girls can't keep secrets should discard their outmoded ideas, because this party was really a surprise to Tonia. She and Joe, Mueschert plan to be married this coming summer. And now for all those kids who have to add another year to their quoted age for subtract it, as the case may be, the Mooring Mast sends a special happy birthday wish. Here's sending birthday greetings to Ralph Legacy, Norris Nelson, Oscar Peterson, Gerald Salvik, Ed Burke, Lester Rohne, John Johnson, Hill Strother, Loren Smith, Ed Gannin, John Haegensen, Al Kluth, Gladys Hovland, Jean Hesla, Inez Larson, Les Storaasli, and Gus Anderson.

**NOV. 13 FROSH DAY AT CAMPUS DEVOTIONS**  
November 13 will be Freshman Class Day at campus devotions held in the chapel at 12:30 p.m. Lowell Knutson of Seattle, president of the class, will be the speaker. The special music will be a duet by Ruth Holle from Luella, Kansas, and Corlie Hasson from Ray, North Dakota.

### Science Hall Set For Rites

(Continued from Page One)  
friends are invited and urged to attend this festive program," Dr. Eastwood states. "This will be one of the greatest events in the history of our college," he continued, "and we would like to have everyone present."

Special provision has been made for the seating of the student body. The main floor bleachers, on both sides, will be reserved for the students.

All students with cars are asked to park their automobiles in the parking lots across Park Avenue from Old Main. The parking area by Memorial Gymnasium will be reserved for the cars of local and out-of-town guests.

Many members of the faculty and student body have expressed a desire to have a part in financing the

**RAYMOND ELECTRIC COMPANY**  
Engineers - Contractors  
913 Pacific Ave. BR. 1712

**COME UP AND SEE ME**  
Bowls to Fit All Heads,  
Jensen Barber Shop

**MICHAEL STERN SUITS and TOPCOATS**  
JETLAND & PALAGRUTI  
925 Pacific Ave. ue

**76 BLUE SPRUCE SERVICE**  
UNION  
"Special Lubrication Rates to Students"  
WE PICK UP AND DELIVER  
3 Blocks South on the Avenue GRanite 8478

**Men ...**  
**CORDUOYS ARE HERE!**  
**PORTER-CUMMINGS CO.**  
New Low Collared Dress Shirts in White and Pattern  
936 Pacific Avenue MAIN 1525

**SAVE MORE MONEY AT YOUR**  
**RED & WHITE FOODS** Johnson-Anderson **RED & WHITE FOODS**  
Groceries - Flour - Hay Grain, etc.  
"Over 25 Years in Your Community"  
On the Mountain Highway Parkland, Wash.

**Dot and Dene's Lunch**  
FRIED CHICKEN DINNER SATURDAY  
ROAST TURKEY DINNER SUNDAY  
SHORT ORDERS ANYTIME  
Open 9:00 a.m. to 9:00 p.m.  
Mt. Highway at Clover Creek GR 8636

**Parkland Fuel Oil And Service Station**  
**GR-8112**  
Lubrication V. R. SELLE Stove Oil Furnace Oil L. S. RYTKONEN

**PARKLAND XXX**  
**Full Course Dinner**  
Served Daily from 11 a.m. to 8 p.m.  
Student Meal Ticket A \$5.50 value for \$5.00  
Two Blocks North on Mountain Highway



### Trustees Plan Faculty Reception Tonight

The Board of Trustees will entertain the faculty and their wives at a formal reception tonight after the meeting of the board today. It is scheduled for the Student Union building at 8 o'clock. Dr. H. L. Foss, president of the board, will bring the greeting and the Rev. Kelmer Roe will respond for the faculty.

Mrs. Foss and Mrs. A. A. Mykland, wife of the secretary of the board will be the hostesses for the Smorgasbord buffet after the program.

Science Hall. They are invited to take part in the offering which will be received at the dedicatory services.

**NEAL E. THORSEN**  
TRICKS - JOKEES - MAGIC  
Costumes - Tuxedos - Serpentine  
926 1/2 Broadway MA. 4861

**Mrs. Frisbie's BAKERY**  
For GOOD Bakery Products  
710 So. 38th St. Ph. GA. 7591

**Neal's Radio Sales Company**  
Radio Repairs and Batteries for Portable Radios  
953 Market St. Tacoma

When you want office supplies  
**C. FRED CHRISTENSEN Stationer**  
913 Pacific Ave. BR. 4629  
Tacoma, Wash.

**FRANWELLS**  
for FINE FOUNTAIN FEATURES  
772 Broadway

### Sr. Mixer-Musicale Slated for Nov. 14

The entire student body will get a chance to get in out of the northern drizzle and "Neath the Southern Moon" next Friday night, Nov. 14. This is the theme of a Mixer-Musicale to be conducted by the senior class at the new Student Union Building, at 7:30, according to Etta Clausen, general program chairman.

Assisting Etta on her committee are Betty Lou Rieke, John Nicolai, Ruth Pilgrer and "Swede" Carlson. Planning decorations and ad-



**Parkland Taxi**  
GR 8192  
Special College Rates

PRESCRIPTION SERVICE... DRUGS  
SUNDRIES... ASSORTED GIFTS... TOILETRIES  
Registered Pharmacists on Duty at All Times

**Parkland Pharmacy**  
Pacific & Airport Road  
GR 8519 Tacoma, Wn.

JUST A SHORT WAY UP THE HIGHWAY IS THE  
**BUNGALOW**  
WHERE THE MALTS AND HAMBURGERS ARE DELICIOUS  
Come Up and See Us. We're Open Early and Late

vertising are Norene Skihred, Anita Roll and Letta Metzger.

**C. O. Lynn Co. MORTUARY**  
717 TACOMA AVE. Phone MAIN 7745

Parkland **WESTERN AUTO**  
Airport & Pacific  
Men's & Ladies' Wear, Sporting Goods, Furniture, Appliances, Auto Supplies

**SWEATERS**  
For All Occasions  
School - Work - Play  
★  
QUALITY KNITTING  
934 Commerce

**BUCKLEY-KING FUNERAL SERVICE**  
TACOMA BRANCH AT 1000  
BDWV. 266

**BROOKDALE LUMBER CO.**  
Mountain Highway GR. 8362  
BROOKDALE, WASH.

**Piper Funeral Home**  
5436 S. PUGGET SOUND  
GARland 5435

**USED TIRES & TUBES**  
with many miles still on them  
**COLLEGE SERVICE and GARAGE**  
Corner Pacific & Garfield GRanite 8197

We Have All the Necessary Ingredients to Make Your Lawn Grow  
at  
**DANIEL'S Hardware**  
On the Highway Corner

FREE PICKUP and DELIVERY AS USUAL  
2 and 3 DAY SERVICE  
**College Cleaners**  
GR 7914

**ART'S Shoe Shop**  
★  
YOU WEAR 'EM OUT— WE'LL FIX 'EM UP  
Garfield, Ave. Parkland

here's your chance to get a  
topcoat at **\$29.50** a choice  
from racks and racks  
at **\$39.50** or the pick  
of the crop at **\$49.50!**  
November is  
topcoat month at  
**LUNDQUIST - LILLY**  
MEN'S WEAR CENTER Eleventh at Pacific, Tacoma