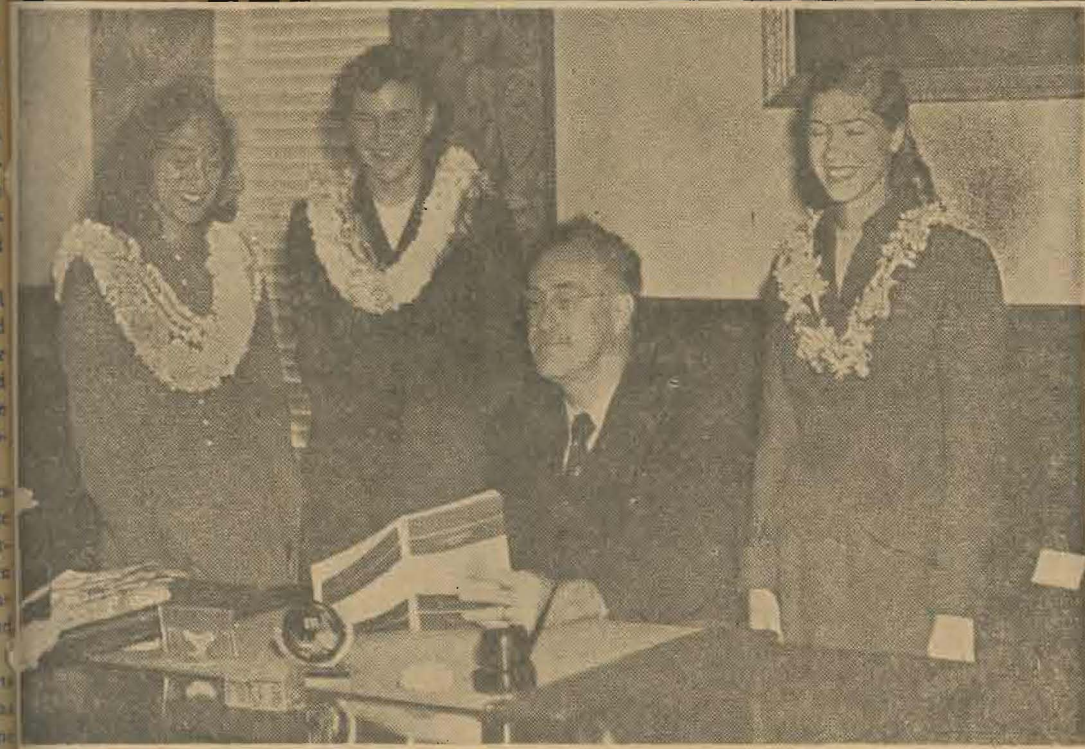


# Lutes, Loggers Meet in Season Opener

## The Mooring Mast

PACIFIC LUTHERAN COLLEGE, FRIDAY, SEPTEMBER 21, 1951

NO. 1



THE SPICE of the tropics has come to PLC with the arrival of Maelani Ann Cazimero, Leticia Baselione and Carol Elaine Brace, all of Oahu. Here Dr. S. C. Eastvold officially welcomes them to their new home in the Northwest.—(Photo courtesy Tacoma Tribune).

## Roe, Arlton Head Homecoming Week

Roundup Days of '51," this year's theme for Homecoming, promises to be an event predominantly flavored with the Old

Wearing six-guns instead of the traditional sword and shield, the Gladiators will do battle with the Central Washington Wildcats in the big grid game.

A western theme was selected for the Wildcats have their home in the Willamette valley, which is the land of cowboys and rodeos. Chairmen Naomi Roe and Paul Arlton have announced that commitments will be: parade, Phil Theriot campus decorations, John Arlton bar-be-cue, Hazel Johnson, red beards, red beards, fuzzy faces, and long beards will be covering the faces of the boys for the three weeks. All razors are being taken away until Homecoming is over.

Following the Homecoming will be the pep rally on Friday night. In the plays a celebrity will be crowned the queen and her attendants. A pep rally will follow and will be held on lower campus. Fireworks shot from the gymnasium roof will highlight the rally.

**Dorm vs. Day Girls**  
Another football game will take place Saturday morning, only this time will feature the weaker sex. The puff howl game will pit the dorm girls against the hustling day girls. According to Paul Arlton, an attempt is being made to get Bob Arlton, sportscaster for KMO, to give the public address system for the game.

The parade will form on lower campus at 12:30 p.m., move up Pacific, then down Pacific, and end in the Lincoln Bowl in time for the game. Tentative for halftime will be a pep rally by 1,000 students. A talent

### Student Body Prexy Tells of Experiences At LSA Conference

Art Broback, Northwest delegate who, together with more than 700 students, American and foreign, attended the annual Ashram, Lutheran Student Association of America conference held this summer at Interlocken, Michigan, reports a very successful and inspiring meet.

"Students from behind the Iron Curtain provided one of the highlights of the conference as they told of their many difficulties and harrowing experiences during the past war and under the present communist rule which we here in America have only read about," Broback said.

Broback also met Miss Marlyn Pflueger, daughter of Dr. J. P. Pflueger, at the conference. Miss Pflueger has spent the summer in Europe on a study tour which also took the group into communist ruled territory.

Motto of this summer's conference was "God's World Our Mission." The theme was carried out in pageants, speeches by outstanding churchmen, through seminar discussion groups and Bible hours.

The conference was attended by 730 students from the United States and 14 foreign countries.

A talent show is also planned for the gymnasium Saturday night.

Sunday will be a day of rest, with special church services conducted by alumni the only scheduled activity.

### Freshmen Display Talent For Sophs

Excitement will reign supreme tomorrow morning as the freshmen girls gather at the fish pond to drain it with drinking glasses, clean and refill it in the same manner. Sophomores and faculty don't forget to take advantage of the free car wash, courtesy of the male section from the new class.

Other activities were sponsored this past week for the benefit of the freshman class.

As soon as Chapel was dismissed Monday morning, groups of eager sophomores awaited their younger charges outside of the gym for the buttoning procedure. Much dismay was demonstrated on the part of the bewildered initiates.

Tuesday the Frosh were penalized in court for their disobedience by Judge John Rydgren, and jury members, Bill Neiman, Don Keith, Richard Stuhlmiller and Jim Jaeger. The frosh were also properly punished for their conduct in leading the yell, "Give Them the Axe," to the sophomore class.

As all the frosh assembled for the meeting scheduled in the SUB Tuesday night the sophomore girls were busy arranging the initiates' rooms in an orderly fashion.

Wednesday the frosh girls looked sweet and demure in their well-selected garb. Clashing clothes, straight hair and various shoes were only a few of the essentials needed in their attire. Wednesday, boys were requested to wear their clothes backward. Silence Day was observed to a certain degree by all freshmen.

Tonight all the frosh will be sectioned for the pep rally. According to the sophomores, they demand pep and enthusiasm from all the freshmen.

### DIRECTORY CARDS

Student directory cards which have not been turned in by students, must be completed and returned this week. All cards may be taken either to the Dean's office or the Registrar's office.

## PLC Seeks First Win In Kings-X Contest

By Dave Nesvig

Two football squads of unknown ability will be viewed by thousands of anxious and curious spectators tomorrow night when PLC and the College of Puget Sound square off in the Lincoln Bowl at 8 p.m. The fans will be anxious to see the Lutes and the Loggers renew their annual athletic rivalry, which annually draws such large crowds. They will be curious to see whether either John Heinrick, CPS head mentor, or PLC's Marv Harshman has an eleven which will be a contender in the Evergreen Conference title chase.

## Music Room First To Be Completed In New CMS Building

Within two weeks twenty music students may start pounding away on as many pianos in the same building without disturbing each other whatsoever, according to Pete Steiro, contractor.

That is just one of the many features of the new \$600,000 Chapel-Music-Speech building now nearing completion by the crews of Steiro and Hansen, general contractors.

First rooms to be made available, the music quarters will be sound-proofed with Johns-Manville sheet-rock wool insulating material, ceiling, walls and floor. Window and door frames are mounted on sponge rubber with each door having a special seal along the bottom. The rooms will be individually heated with convective type steam heaters and ventilation will also be supplied individually to each room by separate ducts to the fire room to prevent sound from traveling from one room to another.

The music library, instrument storage room, band and chorus practice rooms are ready except for sanding of the floors and painting. These rooms should be ready in about three weeks, according to Steiro.

Three more months will be required to finish the main auditorium, balcony and stage. Acoustical ceiling and wall construction will assure the 1200 spectators which the auditorium will hold of excellent sound conditions. Largest school stage in the west, 72x70 feet, the new stage will have a curtain 40x23 feet. Four dressing rooms will be provided below the stage in addition to storage rooms.

The three stories in the front section of the building will house a lobby on the first floor, a lounge on the second, and the Little Chapel on third. The Little Chapel will have a circular stained glass picture window, while amber colored glass windows will provide light for the auditorium. Nearly 100 feet of skyward pointing steeple will be topped with a stainless steel cross, illuminated by two flood lights. Chimes are also planned for the tower at a future date.

### Queen's Reign Near

All Homecoming Queen petitions must be in by Friday, October 5, according to Paul Arlton. The petitions must be signed by 50 students and submitted by the petitioners together with five dollars to Art Broback, Paul Arlton or Naomi Roe.

No student may sign more than one petition.

A reasonable amount of campaigning and advertising is requested by the Homecoming committee to add interest to the activities.

Neither team is loaded from the standpoint of returning lettermen, but both have picked up some valuable freshmen and transfer students.

### Lost Opener Last Year

The Parkland boys still have the 35-0 defeat, suffered at the hands of CPS in the season's opener last year, fresh in their minds, and will settle for nothing less than a reverse decision this year. Of course, the Loggers are still stinging from five straight losses to the Gladiators in basketball last season, so both outfits will have an added impetus for victory.

The days of the famed PLC aerial circus seem to be swiftly disappearing and this season Harshman has been drilling his squad in the hopes of developing a strong ground game.

It will be built around four lettermen backs, Al Fink, speedy fullback, who will share punting chores with Frank Karwoski, diminutive signal-caller. He will also do most of the pitching. Halfbacks Bill Stringfellow and Art Swanson complete the backfield combination.

(Continued on Page 3)

## PLC Male Population Takes on 'New Look'

Cache your razors away until Homecoming, men, and join the countless millions who prefer beards to shaving. Your effortlessness will be rewarded. Paul Arlton and Naomi Roe, Homecoming co-chairmen, have promised valuable prizes in all divisions from peach-fuzz to the longest. Friday evening, October 12, the judges will survey the soup-strainers and chin-ticklers and award the prizes in the Student Union.

## Business Club Plans

Monthly luncheons were discussed at the first meeting of Alpha Sigma Lambda, Wednesday.

It was thought that such luncheons should be held in the afternoon so that those who cannot attend the evening meeting will be able to participate in the club's functions. A decision was also made to enter a float in the Homecoming parade.

## Steen Conducts Studies

A Bible study in the book of Hebrews will be conducted in the Friendship room at Trinity Lutheran church every Wednesday evening at 7:30 p.m. The Bible sessions will be led by Rev. Steen and anyone interested is urged by the church to attend.

Wednesday night marked the first session for the year with sessions to be continued at the above time each week.



# The Mooring Mast

Published every Friday during the school year by students of Pacific Lutheran College.

Entered as second class matter, October 2, 1925, at the Post Office at Parkland, Washington

Office: Student Union Telephone: GRanite 8611  
Subscription price—\$1.50 per year

CO-EDITORS.....JOANNE SCHIEF, DAVE NESVIG  
EXCHANGE EDITOR.....ERNEST JOHNSON  
SPORTS EDITOR.....DAVE NESVIG  
AD MANAGER.....MURRY MARTIN  
CIRCULATION MANAGER.....MARILYN SANNERUD  
ADVISER.....GUTTORM GREGERSEN

REPORTERS—Joanne Poencet, Phyllis Grahn, Joyce Genz, Gloria Kvinge, Delores Hagevik, Ernest Johnson, Jerry Martin, John Martin, Kenny Johnson.

Printed on the Campus by La Crosse Printing Company 4

The first issue of the MOORING MAST this year marks the beginning of the fifty-eighth year at Pacific Lutheran College. Many changes have taken place during those years. The emphasis has changed from that of giving elementary and high school training to immigrant students to that of becoming one of the most outstanding liberal arts colleges in the country. Majors and minors are given in many fields of learning. Some of the brightest, finest minds that come out of high schools, as well as transfers from other institutions are with us today.

Enrollments have gone up and down. Even though many schools have suffered great losses in the student enrollments, Pacific Lutheran College still numbers more than 700 students on her campus.

During the first days of this semester, we have had the greatest chapel attendance we have ever had.

Notwithstanding all the changes for better or for worse, there is one place where we have made no change. "Pacific Lutheran College seeks to discover, foster and implement the traditional objectives and techniques of the liberal arts college and to develop a Christian philosophy that will actualize its motto, "Build for Character".

Christian higher education lays claim to aiding in finding the way into a more abundant life. It imparts knowledge, produces culture, and molds character. It fits men for the largest, fullest, and noblest living. The essence of success is found in systematic work, sustained application, and in a poise which is rooted and grounded in Jesus Christ, the Son of God and Savior of men.

Christian higher education goes beyond the purely academic side of learning. Man is not pure, good, and noble in proportion to his knowledge. America is not great because of her advance in science alone, but because of her ideals, convictions, and faith. The great gulf between Russia and America is to be found in the gulf which exists between atheistic Marxism and the Biblical conception of man.

It is with great pleasure that I extend the right hand of fellowship to faculty, students and laboring people who have joined us in building our college again this year materially, academically, and spiritually. We look forward to the greatest, finest year we have ever had during our fifty-eight years. To this end we pray in Jesus' name.

Cordially yours,  
S. C. EASTVOLD.

## Animals Invade Girls' Dormitory

Conditions in the Girls' Dormitory have been extremely crowded during the past two weeks. However, students have been totally unaware of many of the more illustrious guests taking up permanent residence on certain floors.

It seems that several outstanding house guests from Puyallup have edged in on Edna McCall and Helen Hansen and unpacked their suitcases on the window sill. Three of the visitors are turtles who answer to the names of Benjamin, Wilhelm, and Jonathan Robinson. At the present time their hostesses are engaged in the art of feeding them by hand. Swimming beside the turtle home is a lonely goldfish, won by Edna, which is the local pride of the floor.

Such house guests are an important part of campus life, but in view of the present crisis, many such visitors may have to be limited.

## Monson New Manager At College Course

First sergeant in the Marines, office worker for Pacific Gas and Electrical Co., new College golf course manager and perhaps a minister in the future—that's the record of Gerald Monson.

Monson also has good news for beginning golfers with a class for novices planned by the management in the future. The class will be announced at a later date. In addition the golf course is also slated for several improvements. The golf course manager expects to organize both boys and girls golf teams for competition and recreation in cooperation with Rhoda Young and Mark Salzman.

Monson, who is also a sophomore class member, and his wife Helen have two sons and one daughter. Born in Montana, Monson grew up in Minnesota and moved to California.

### Parkland Donut Bar

#### Attention!

NOW — Fresh Donuts  
7:30 a.m. Daily

Compliments of  
Frye's Furniture

## LaCrosse Printers

CARDS  
POSTERS  
ANNOUNCEMENTS

Printers of Your

MOORING MAST

Located in  
Old Chapel Building,  
On the Campus

### PORTRAITS OF DISTINCTION

- ★ Glamour
- ★ Weddings
- ★ Groups
- ★ Children
- ★ Copies

### McKEWEN STUDIO

GRanite 3833

407 Garfield, Parkland

### Centre Cleaners

Nyer and Eva Urness  
Parkland Centre Building

Permanent Waving—Hair Styling

### MARGIE'S BEAUTY SALON

Back-to-School Hair  
Styling

Parkland Centre GR. 7475

Need An Oil Change?

### Gladiator Service

Parkland, Washington

## Letters to the Editor

### ART WORK OF "SAGA '51"

Because of the late distribution of last year's Saga, the artist was able to return home, avoiding the mass of questions that generally follow the publication of any yearbook. However, there has still been some discussion and as a result of this, JoAnn Nodtvedt, editor of this year's Saga, has asked that I give a brief explanation of each page of art "as the artist sees it."

I have had the good fortune of being art editor for three years now, and it is with much pleasure that I shall discuss my work. I feel that you must view your Saga as you read this in order to fully understand it. The theme is "Building" as in "Build for Character," and I have used symbols of building material to carry the theme.

The Introductory page, adopted from plans for a sculpture that the artist someday hopes to complete, shows the building of strength through prayer and through leaning on the Word of God.

The Administration page shows the real builders of PLC, those responsible for the prayerful plans, blue-prints, and the actual buildings of our school. The "Staff-of-Life" represents their sacrifice and the humble lives they were required to live before their dreams were made real and our school was made what it is today.

Classes: The pathway or milestone of each student is suggested by sculptured symbols. The interpretation is simply this, from freshman to senior, and on to build the world (now under construction).

The Organizations page shows the

"rock" of PLC with Christ as the and representative symbols of all music, forensic, language, science sports clubs tending to the building of the personality and character of each student (unfilled human form) as he looks to the future, the dawn of a new world.

The Athletics page shows the building of strength, school spirit, teamwork, and of team spirit. These are the real products of our sports.

The Activities page, perhaps a little more difficult to originate because of the complex nature of our activities, attempts to depict the building of unity in character as seen in the sculptured face. The crude timber is merely a symbol of building. The "key-hole river" is for the music that flows through many of our activities. The castle is a dreamland, a symbol of activities involved in choosing various queens. The students in moonlight represents you, who I hope will look beyond the things in the foreground, to see the Cross of Christ shining on everything that you do.

### Spurs Get Uniforms

Spur members met for their formal meeting of the year Thursday evening in the Viking lounge of the girls' dormitory.

Plans for the coming school year were discussed and decided upon by the group. Special activities for the coming weekend were also proposed.

Sweaters, national Spur emblems and pins arrived this week and were distributed at the meeting by group treasurer, Hermina Meyer. Beginning next week the required uniforms will be worn by all members on each Student Body day.

## WE WANT TO GET ACQUAINTED



★ If a Freshman Buys a Sundae,  
Upperclassman Gets One Free

See our large stock of:

- Stationery
- Fountain Pens
- School Supplies
- Sundries
- Magazines

## Johnson's Drugs

GRanite 7333

Opposite Post Office



# Former Lutes Added To Coaching Staff

Two of PLC's most illustrious football players of '51, Rick Daniels and Bob Schrupp, have returned for fifth year studies and are helping Coaches Harshman and Salzman with this year's football squad, working mainly as the linemen.

Both were four-year lettermen here and thus have used up all of their eligibility. Rick was named MVP last year to the second Little All-Star team for his play at the center position and had a tryout this year with the San Francisco 49ers professional team. He was one of the first to be released by this outfit.

Bob, who cracked the starting lineup three straight years, was one of the most outstanding defensive ends school has seen. He also proved himself a capable pass receiver when on offense. Those who saw the game last year between the Lutes and the Loggers will long remember the part Hal played in the team gaining a 13-13 tie.

## 1951 GRID SLATE

- 2—Puget Sound at Tac. (N)
  - 3—\*Whitworth at Tac. (N)
  - 4—\*Western at Bellingham (N)
  - 5—\*Central at Tac., 2 p.m. (Homecoming)
  - 6—\*Eastern at Cheney (N)
  - 7—Open
  - 8—Pacific U. at Forest Grove, Oregon (N)
  - 9—Puget Sound at Tac. (N)
- Evergreen Conference game games will be played in Lincoln Bowl

## Quality Knitting Company

For Better  
SWEATERS

St. Helens MA. 6581  
from Medical Arts Bldg.



LET US  
CARRY THE BALL ON  
YOUR HEATING OIL

Be gladly be responsible for keeping you supplied with Clean-burning  
waste STANDARD FURNACE OIL or STANDARD STOVE

- \* PROMPT SERVICE
- \* METERED DELIVERY
- \* AUTOMATIC RE FILLS

ENJOY THAT "PLUS" SERVICE

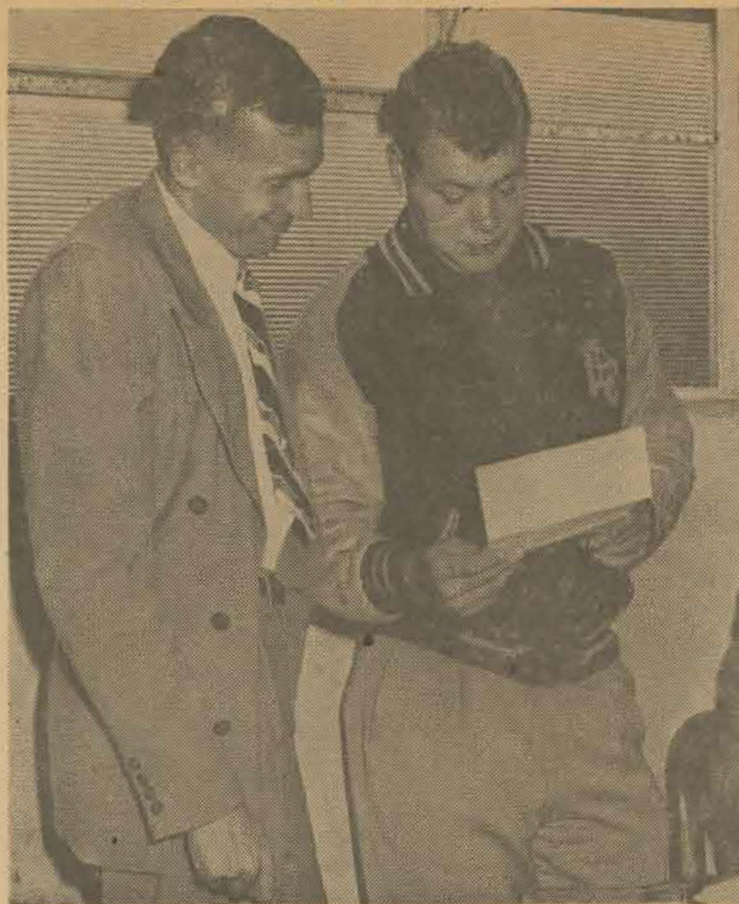
STANDARD HEATING OILS — AUTO PARTS

# Parkland Fuel Oil Service

13th & Pacific Ave.

Phone GR. 8684

## GRID TUTORS PLAN ATTACK



HEAD COACH MARV HARSHMAN, together with Assistants Mark Salzman and Rick Daniels of the Lutes' strategic planning board, look over the latest plans developed to cut down the Loggers in tomorrow night's season opener. Salzman and Daniels are new additions to the Pacific Lutheran football coaching staff, while Harsh moves up from assistant to head coach. The coaches are hoping to avenge the 33-0 defeat suffered at the hands of CPS in last season's opener. If the Lute showing in the second CPS game is any indication of what may happen tomorrow night, smiles may stay on the mentors' faces.—(Photo courtesy Tacoma Tribune)

## PLC Seeks First Win

(Continued from Page 1)

The Gladiator forward wall should prove to be a formidable one both on offense and defense. At the ends will be Jim Ball, transfer from WSC, and old reliable Glen Huffman. Filling the tackle spots will be Chuck Forslyn and Ole Magnuson. Captain Bob Nielson and Ray Barnes, a transfer from the U. of W., will handle the guard duty. Jack Johnson, center, rounds out the lineup.

Since Evergreen Conference rules for this year limit the squads to 25 men, the two-platoon system won't be employed by Harshman. However, some changes will be made in the defensive lineup. Ron Billings will man one defensive halfback spot, Bill Waddell will play in the center of the line in place of Barnes and Bill Tollefson will replace Huffman as a defensive end.



Marv Tommervik

## Buy Tickets Early For PLC-CPS Game

In order to avoid congestion at the ticket booths tomorrow night, students are requested to purchase their tickets for the PLC-CPS contest at school. They may be obtained in the bookstore, business and registrar's offices. Admission is 50 cents for students.

## Salzman Plans Busy Year In Intramurals

A round-robin schedule of touch football will be the initial installment of the intramural program for the coming year, under the supervision of Mark Salzman, new physical education professor.

Salzman has designed the intramural schedule to include both team and individual sports, so that every student in school may pursue his favorite athletic activity.

Teams will be organized in touch football, basketball, softball, track, speedball and volleyball. For those who prefer individual competition, tournaments will be slated in tennis, golf, rope climbing and tumbling.

Every man in school will be placed on a team. These teams will be from natural districts such as the Blue Dorm, White Dorm, Parkland, South Tacoma, Puyallup, etc. The squad rosters will be permanent for the school year. At the completion of the year, the team earning the highest point total will receive an award.

Points will be awarded not only for team performance, but individual points made in rope climbing, tennis, etc., will count towards the team totals.

Another innovation by Salzman will be "Fun Nights," to be held in the Memorial gymnasium on Saturday nights, when there are no athletic contests or other activities planned. Various group games will be played as well as ping-pong, shuffleboard, badminton and others.

## Harshman Heads New Coaching Staff In Debut Tomorrow Against Loggers

When the Lute and Logger pigskinners clash tomorrow night in the season's opener. Coach Marv Harshman will be making his debut as head football coach and will have as his assistant another coach who is new to Glad coaching ranks, Mark Salzman.

"Harsh," half of the "Marvelous Marvs" combination, which blazed their way to football fame wearing the Gladiator yellow and black, needs no introduction to PLC fans. For the past four years he has been working with Marv Tommervik in guiding the gridiron aspirants here, but this year has taken over the reins of head coach when Tommervik resigned to enter private business.

Harshman will retain his post of

Other aspirants who should figure in the 25-man squad are Bob McAdams, Chuck Gouty and Bob Brog, ends; Dick Griswold, Marv Fink, Vorvick, Chuck McGrath, Bob Tillotson in the middle of the line; Vern Clarke, George Nowadnick, Claude Munger and Punk Woltheuter in the backfield.

basketball coach and will also take over this year's baseball team.

The other half of this year's "brain trust" is Coach Salzman, a graduate of Carthage College in Illinois. While in college he lettered in football, basketball and track, amassing a total of eight chenilles. After graduation he served for three years as physical education director at the Chicago Y. M. C. A.

Coach Salzman has just obtained his Masters Degree from the University of Iowa.

Besides his duties as assistant football coach, he will help "Harsh" with the basketball team, will take over as head track coach, will be in charge of physical education classes and will handle the intramural program.

## W.A.A. Skating Party Tonight After Rally

First on the list of campus activities for the year will be the Roller skating party at the Roller Bowl in South Tacoma this evening. The party will be sponsored by the Women's Athletic Association.

Busses will leave from Old Main immediately following the CPS pep rally and transportation will cost 25 cents per person.

Admission for the evening's event will cost 50 cents and skates will cost 25 cents. Tickets will be on sale in the office this week.

Plans are also being made by the W.A.A. for a mountain trip on Sunday afternoon for all girls interested. For further information girls may contact Mrs. Rhoda Young in the gymnasium. Transportation will be provided for a general fee.

## WELCOME

Students and Faculty

## GARFIELD VARIETY

## WELCOME, STUDENTS

- PICK UP & DELIVER
- QUICK SERVICE
- LAUNDRY
- ALTERATIONS

## Mt. View Cleaners and Laundry

134th & Mt. Highway

GRanite 3261

## Remember Physicals!

All new and transfer students who have not had their physicals are urged by the dean to report to the Health center as soon as possible for examination.

Students from previous years who have not taken their examination should also report to the Health center.

## The Clay House

Classes Start:  
Thursday Nite, 8:00 to 10:30  
Week days, 2:00 to 5:00

Parkland Center

## DILL HOWELL Sporting Goods

929 Commerce St. Tacoma  
MA. 5665



## Tournament Schedule Outlined At First Debate Meeting

According to Mr. Theodore Karl, director of the speech department, the first turnout was good when the old and new members of the debate squad met Wednesday afternoon to discuss the tournament schedule for the year. Old members were introduced and a freshman orientation program was outlined.

## Choir of the West Faces Rebuilding

"With only 12 of last year's 60-voice choir returning, the Choir of the West has a tremendous rebuilding job," stated Prof. Gunnar J. Malmin, director.

The graduating losses were not heavy, but the armed services took the largest percentage of the men. Tenors appear to be in greatest demand.

This year is the 25th anniversary of the Choir of the West. According to Mr. Malmin, a new repertoire is planned, including Bach's Motet, "Sing Ye to the Lord." A special silver jubilee concert is slated for later in the year. At that time there will be a reunion of old choir members who will sing with the choir. Joseph Edwards of Fresno, Calif., the first director of the Choir of the West, will be guest director of the concert.

### Fifteen Years

Beginning his 15th year as director, Mr. Malmin is very optimistic over the way the choir has been shaping up to date, although there is still room for more. Pastor Roy Olson, public relations director, is choir manager.

For those interested in choir, the only requirement is a fairly good voice. However, new members are requested to take at least one semester of private voice instruction. This is sometimes asked of the old members as well.

## PLC Associated Women Hold Traditional Tea

The Associated Women Students of the campus held their annual Big-Little Sister tea in the Student Union building, Thursday at 4 p.m. Women members of the faculty were also present at the afternoon gathering.

Entertainment for the afternoon included introduction of new officers and a vocal solo by Eleanora Hansen. Greetings were extended to the group by Mrs. Holstad, Miss Wickstrom and Mrs. Kriedler. Background music for the tea was provided by Beverly Sjobon and Barbara Hedlund, and Mary Lynn Mycklebusst presided as mistress of ceremonies.

Following the program refreshments were served. Miss Gertrude Tinglestad and Mrs. Leslie Ecklund poured at the table which was decorated in a fall theme.

Committee members included Joan Gardner, decorations; Margaret Thompson and Hene Drivstuen, refreshments; Grace Fage, publicity; Ann Knorr, invitations, and Karen Hille and Inga Astrup, clean-up.

## Stop at . . . VERN'S

For A

### Whamburger!

Over-sized Hamburger with Mayonnaise, Lettuce, Pickle, Onion, and our SPECIAL RELISH.

Old English Fish and Chips  
Home-made Pie and Cake

NINTH & PACIFIC

## Staff Increase Noted at PLC

New faculty and staff members, hailing from Norway to Tacoma, totaled ten as classes for the new academic year began Monday, Sept. 17.

The Rev. Roy E. Olson, pastor of Central Lutheran Church in Tacoma, joins the PLC staff as director of public relations. He succeeds the Rev. Milton Nesvig, who has been called into active duty in the United States Navy as a chaplain.

Freda Al Peterson, of Fort Dodge, Iowa, joined the faculty this fall as director of the new school of nursing, which will be carried out in cooperation with Emanuel Hospital in Portland.

Margaret Wickstrom, of Stanton, Iowa, has been procured for the position of dean of women.

Miss Wickstrom recently received the Master of Arts degree in religious education from the Biblical seminary of New York.

### Professor in Education

Dr. Theodore C. Sjoding of Minneapolis is a new assistant professor in education. He will teach courses in education and will be responsible for the supervision of the student program on the secondary level.

Joining the faculty as assistant professor of English is Dr. Leonard Hegland of Missoula, Mont. He has had teaching experience at the University of Kentucky.

Succeeding Dr. M. N. Franck, who has resigned from the faculty, is Earl A. Reitan, of Grove City, Minn. He has been appointed as assistant professor of history and political science.

### DP on Faculty

Dr. Karlis Kundzins, a displaced person from Latvia, joined the faculty this fall as a lecturer in German and German literature. Dr. Kundzins received his education at the University of Tartu in Estonia and completed his graduate studies at the University of Riga, where he taught Greek and lectured on New Testament and the beginnings of Christianity, and he has written several books.

PLC also welcomes Karl J. Skarsvik, of Troadheim, Norway, as an exchange teacher this fall. He will be an instructor of Norwegian and French and is teaching here in exchange for the Rev. T. O. Svare, professor of Norwegian.

### New Dietician

Appointed to the faculty as the first dietician of the college dining hall, is Viola Olson of Moorhead, Minn. She

## Chips from the Chief

Am I in the right class?—This seems to be the general problem pertaining the campus family since many classes have been switched to scattered locations during the preparation of the new building. The bulletin board seems to be the popular meeting place since the list of class schedules has been placed behind the glass. But just be patient and soon these many eyes can emerge from behind the SUB stage curtain, the Coffee Shop, the Student Body office and the furnace room to take up permanent residence in the modern rooms now nearing completion.

Button Fresh!—During this exciting week the Sophomore students are enjoying a special field day. Books, homework, etc., have all been placed carefully and painstakingly aside to indoctrinate and train the new campus citizens. We believe that all freshmen should become aware of this great sacrifice on the part of their superiors and realize how beneficial and important it will be in their future careers some day. After all, John Ruskins once said "The first test of a great man is his humility." However, in spite of this, the PLC campus says Welcome! to our campus family.

This means you!—It seems that already many problems have arisen on the campus for the student council such as parking in restricted areas, crashing and numerous others. Please try to do your part to make our campus a place to be proud of all year and do your share to build and mold a spirit of cooperation. Yes, this means you!

I pledge to serve my country—Don Breimo, spring editor of the Mooring Mast, has replaced his collegiate attire to put on the colors of his country. It seems that after demonstrating unique courage and patience in the printing shop, he has decided to put it to work for defense purposes. We salute Don, and the Mooring Mast office won't be the same without you.

You ask where I live?—Many dorm girls at the present time couldn't give their address to anyone because they are simply lucky to have a place to rest their curly heads upon at night. The dormitory halls bear a resemblance to the Great Migration. But by the sounds of the busy hammer in the attic the new rooms should be ready soon. Then those loaded suitcases and knapsacks can be unpacked for nine months. Only let's not all arrive at once.

will teach a course in home economics and work with the administration in laying plans for the establishment of a Home Economics department for the fall of 1952.

H. Mark Salzman, of Oak Park, Illinois, is new on the faculty this fall as instructor of P.E. He attended Garthage College in Illinois and was an outstanding athlete. In 1947 he was given the most valuable player of the year award.

Added to the staff as assistant librarian is the Rev. Frank H. Haley, who received his Bachelor of Arts degree from Willamette University, and was awarded the Bachelor of Divinity degree by Drew University in Madison, Wisconsin.

Order Personalized Christmas Cards Now!

**C. Fred Christensen**  
STATIONER

913 Pacific Ave. BR. 4629  
Tacoma, Wash.

## Young's Gift Shop

Greeting Cards for All Purposes

GARFIELD STREET

## COLLEGE GOLF COURSE

Golf Rentals and Sales

Under New Management  
Candies and Soft Drinks  
Open Year Around  
Gerald and Helen Monson, mgrs.

GR. 8559

Need a Shave?

**Parkland Barber Shop**

Welcome, new and old students to a new year at PLC

from

**Alpha Sigma Lambda**  
Your Business Club

The Latest and Finest in RECORDS and SHEET MUSIC

**TED BROWN**  
MUSIC CO.

1121-23 Broadway Tacoma

## DANIELS HARDWARE

On the Highway Corner  
PACIFIC AVE. & GARFIELD

Delicious Hamburgers

at the

**HANDOUT**

129th & Pacific Mt. Highway

Let's Go, Lutes!

Jam Those Loggers

College Coffee Shop

**WELCOME**

New Students to the

**Parkland Jewelers**  
Garfield Street

**Neal E. Thorsten**

TRICKS - JOKES - MAGIC  
Costumes - Tuxedos - Serpents

926½ Broadway MA

## SWEATER CENTER

For GUYS and GALS!



Meet Your Friends at . . .

## ALVSTAD'S MARKET

GROCERIES — MEATS — VEGETABLES  
FROZEN FOODS

Garfield Street

Parkland