

PACIFIC LUTHERAN UNIV. LIBRARY



3 9330 01576 6328

SONG

1948

ARCH
LD
4461
P325
1948

R
73.777P
P115
c.1

ROBERT A. L.
WORTVEDT LIBRARY
PACIFIC LUTHERAN UNIVERSITY
Tacoma, Washington 98447-0013

Pacific Lutheran College
LIBRARY
CLASS ^R378.797P ACCESSION 97403
BOOK P115 COPY 1

P. L. C.
LIBRARY

12
T

Published by the Students of Pacific Lutheran College



T H E
S Ä G A
1 9 4 8

PARKLAND, WASHINGTON



SCIENCE HALL DEDICATION

FOREWORD

Pacific Lutheran College, the school of our choice, has enjoyed a rich and colorful past. She has grown from a small school in a wilderness to a college of far-reaching influence here in the West. But now let us not gaze at the past — let us bravely look toward the future, with a vision clear and undimmed by indifference, fears, or petty prejudices. It is our responsibility now as students, and later as alumni, to help Pacific Lutheran College achieve the successes which the future holds for her.



Student Union Building Dedication
Gymnasium Dedication

DEDICATION

To a future filled with greater success for our beloved Pacific Lutheran College, we respectfully dedicate this publication.

1947 SEPTEMBER 1947

SUN	MON	TUES	WED	THUR	FRI	SAT
						6
						13
1						20
21	22					27
28	29	30		14th	22nd	30th Full Moon

1947 OCTOBER 1947

SUN	MON	TUE	WED	THUR	FRI	SAT
						4
						11
						18
	2					25
26	27	28	29	30	31	Full Moon 29th

1947 NOVEMBER 1947

SUN	MON	TUE	WED	THUR	FRI	SAT
						1
						8
						15
16	17	18	19	20	21	22
23 / 30	24	25	26	27	28	29

TURKEY HOLIDAY

1947 DECEMBER 1947

SUN	MON	TUE	WED	THUR	FRI	SAT
						6
						3
						0
						27
28	29	30				

Last Quar. 4th
 Full Moon 27th
 Quar. 20th
 PRINTED IN U.S.A.

1948 JANUARY 1948

SUN	MON	TUE	WED	THUR	FRI	SAT
						3
						0
						7
						4
25	26	27	28	29	30	31

Last Quar. 3rd

1948 FEBRUARY 1948

SUN	MON	TUES	WED	THUR	FRI	SAT
						7
						4
						21
						28
29						

Last Quar. 1st New Moon 9th Full Moon 24th

1948

MARCH

1948

SUN

WED

SAT



28 29

27

quar. Full Moon
18th 24th

1948

APRIL

1948

SUN

THU

SAT

Last O
1st-S

4

11

18

25



3

10

17

24

1948

MAY

1948

SUN

MON

FRI

SAT

2

9

16

23
/ 30

31



1

8

15

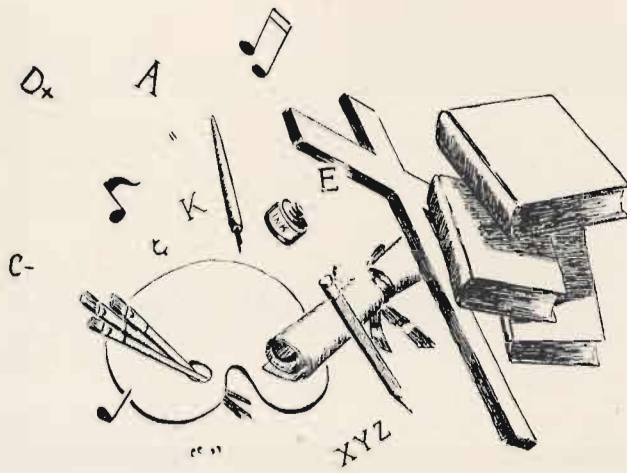
22

29



Administration

U W



12
T



President's Message . . .

Good education can come only from excellent teachers. All freedoms are dependent upon the kind and quality of our educators. Christian teachers are the custodians and conservators of great spiritual values.

Back of every kind of movement there are teachers, and they shape the mind of those who command and obey. There is no lack of education, but there is a great deal of bad education in the world. The Christian college is an antidote to error, as well as a positive proclamation of truth, and it is only truth that can make men free.

The primary aim of this College is sound Christian character. We do not aim to increase monetary earning power, or to furnish social enjoyment, or to provide competition in sports just for the fun of it. We aim to help our students acquire a new appreciation of beauty, a richer character, a stronger faith, a deeper knowledge, a broader vision of time and eternity, a higher culture, and above all else to know Jesus Christ as the Son of God and the Savior of the individual man.

President Eastvold

Dean's Message . . .



May you, in your life, continue to have faith in the future. You are to be congratulated on your belief in the importance of education. You must, however, be vigilant in your search for true human and spiritual values.

When China was travelling through its darkest days its leaders searched for a slogan which would unite its people. Finally they asked a school teacher who, after some hesitation, said he couldn't suggest a slogan but could offer a prayer:

"Oh Lord, re-vitalize Old China, but start with me."

We invite you to approach the future with this prayer, "Oh Lord, re-vitalize our country, our world, but start with me." If this be our prayer we need not fear the future.

Dean Hauge



HARRY S. ADAMS, B.S., M.S.
Mathematics
*Enjoys good music and a
game of pool with the boys.*

E. M. AKRE, M.A.
History and Latin
*Hobbies? Camping, traveling
and history.*



CLARA J. CHILSON, M.A.
Speech
*Practices what she teaches.
In the form of Speeches.*

MICHEL N. FRANCK, A.M.
History and Political Science
"N. C."



RUTH S. FRANCK, M.S.
English
*"Human nature has not
changed in 3000 years."*

VERNER L. JOHNSON, M.S.
Biology
*"Amoeba" known by his
lectures and board work.*



CATHERINE S. JORDAHL,
PhD.
Spanish and French
*Kept busy with home, family,
classes and language clubs.*

OLAF M. JORDAHL, PhD.
Physics and Mathematics
*Would-be engineers start
here.*



ANNE E. KNUDSON, M.A.
English
No crone, this chaperon.

OTTILIE LITTLE, PhD.
German
*Understands her students; a
personal interest in each one.*



LILLIAN LANGEMO,
B.S. in L.S.
Library Ass't
Serv'ce with a smile

DOROTHY BRANN MALMIN,
B.S.M.
Organ
*"Special interests? The other
five Malmins!"*

MISSING

ALVIN E. FRITZ, M.A.
Psychology

MARVEL K. HARSHMAN, B.A.
Physical Education

E. ARTHUR LARSON,
A.B., C.T.S.
Swedish

GUNNAR J. MALMIN,
M. MUSIC
Director of Music
*His arms are in the air 2/3
of the time.*

ANNA MARN NIELSEN, M.A.
Director of teacher training
*Hobby? "Making budding
teachers blossom."*

ROBERT OLSEN, PhD.
Chemistry
*With Gen'l Motors last year,
proud to have him on the
teaching staff.*

BURTON T. OSTENSON,
B.A., M.S., PhD.
Field Zoo, Botany, Biology
*Hobby? "Field collecting . . .
snakes and bugs, that is."*

ANILaura PECK, M.A.
Accounting and Bus. Admin.
*Class always ends before it is
expected to.*

J. P. PFLUEGER, B.S., D.D.
Religion and Philosophy
*Eighteen years at PLC. The
students' inspiration.*

MILTON L. NESVIG,
B.A., M.A., C.T.
Journalism, English, Director
or News Bureau, Alumni
director
*A PLC student not long ago,
first year on the staff.*

MAGNUS NODTVEDT,
B. Th., M. Th.
American, European, and
church history
*An initiate at P.L.C. Enjoys
cabinet work and fishing.*

CLIFFORD O. OLSON, B.A.
Director of Athletics
*Keenly interested in school's
activities.*

JAMES G. PATRICK, PhD.
Economics and Business
Administration
*Business is his business.
Interested in motion picture
photography.*

ANDERS WILLIAM RAMSTAD,
C.T.S., M.S.
Chemistry
A favorite for 23 years.

HERBERT RANSON, PhD.
Head of English Dept., Eng.
and American Literature.
*Lively discussions on liter-
ature, interested in politics.*

MISSING

HAROLD J. LERAAS, PhD.,
D.D.S.
Biology and School Dentist

GEO. RENEAU, PhM. L.L.B.
Sociology

GUDRUN NESS RONNING,
B.A.
Voice





PAUL M. REIGSTAD, B.A., M.A.
Speech and English
*New here this year . . . we
like him.*

KELMER N. ROE, B. TH.,
M. TH.
Greek and Religion
*His first year here . . . We
know it won't be his last.*



WILLIAM A. SAWHILL, M.A.
English
*Worked for the Vets last
year, has the Vets working
for him now.*

O. J. STUEN, M.A.
Librarian, Norse
Knew PLC when it was PLA



GERTRUDE B. TINGELSTAD,
B.A.L.S.
Ass't Librarian
For library efficiency.

MARVIN S. TOMMERVIK, B.A.
Physical Education
*Football coach. Spare time?
Senior piano-mover.*



KARL E. WEISS, B. MUSIC
Piano, Music
*Gives inspiring lectures as
well as an appreciation of
music.*

RHODA H. YOUNG, B.A.
Women's P.E., Choir Mgr.
*"Ma" is always on the spot
with her movie camera.*



DORA A. BERG, M.A.
Art
Her language is art.

MABEL METZ DILTS
Voice
For a well-trained voice.



CHARLES J. GESTANTAS,
M.M.
Orchestra and Violin
*Loves good food. Spare time?
Junior piano-mover.*

VALBORG GREEN HOLSTAD
Assistant Dean of Women
*More commonly known as
our "House Mother."*

MISSING

HAROLD G. RONNING,
M.A., M.TH., Ph.D.
Education

CARL SVEDBERG, B. MUSIC
Piano

MRS. IRENE CRESO
Lab. Ass't.



Administration

Kenneth Jacobs, Plant Manager



Registrar's Office: Charlotte Swanson, Anita Stuen, Mrs. Linka Johnson.

Business Office: Mrs. Peterson, Helen Blomelie, Mrs. Enge.

Mrs. Watness
Secretary to the President

Mrs. Lider
Nurse





MISS GRACE BLOMQUIST
Dean of Women



MR. LESLIE O. EKLUND
Dean of Men

Once again the Saga is published. In it is the pictorial account of the year gone by, a record of the present and the past—the PLC we want to remember. The spirit of the college of today is the spirit of the college of the future. As we look and build toward that future, we need to examine our intellectual and spiritual lives. The individual must grow if the college is to grow. Building for character is a noble theme not only for the past and present but also for the future.

“It is much less what we do
Than what we think, which
fits us for the future.”

Grace Blomquist

Only the diligent and faithful dare with an open mind to contemplate the future. This is the unique privilege of the students at Pacific Lutheran College, who are day by day preparing to meet a future responsibility. Looking to the future is especially significant in a Christian college where to learning is added permanent spiritual realities. Our plans for the future determine the direction of effort for this day and hour. With faith and persistence we can face our responsibilities and then act for the future.

L. O. Eklund





Board of Directors

Greetings to the Students, Faculty, Alumnae and Friends of our beloved P. L. C. !

As we look to the future, we envision the present student body in Christian faith and service, taking their places in life's many vocations, a loyal and efficient group of Christ-consecrated American manhood and womanhood.

To you belongs the future, and that "future" is largely being shaped today as you "Build for Character" within the walls and environs of P. L. C.

We have every reason to be proud of the record written by so many who claim P. L. C. as their Alma Mater. As we, year after year, welcome an increasing number to enjoy the privileges of study and association at Pacific Lutheran, we are increasingly confident that also the future of our college will be in good hands, and that the influence and blessings of Christian higher education will be imparted through you to many others.

God bless you all!

H. L. Foss
Chairman Board of Trustees
Pacific Lutheran College

March 9, 1948

Alumni

A drive to raise \$30,000 toward the new Student Union Building is the major activity of the Pacific Lutheran College Alumni Association this year. Mr. T. Olaf Hageness, '31, is campaign chairman; Dr. Martin Norgore, '16, is honorary chairman; and Mr. Milton Nesvig, '35, the alumni secretary, is campaign director.

Alumni Reunion was held February 7 and 8 in connection with the dedication of the Student Union. A smorgasbord banquet was held Saturday night, Feb. 7, in the main lounge of the Student Union, and the fund-raising drive was opened at the time. Over \$5,000 in cash and pledges was raised that night.

Alumni officers who served the past year are: Bertrum Myhe, president; Mrs. J. U. Xavier, vice-president; Mrs. Dorothy Harshman, recording secretary; Mrs. Thelma Willis, corresponding secretary; and Wilfred Jewell, treasurer.





PACIFIC LUTHERAN COLLEGE

1. PLC on the air!
2. PLC in the air
3. CPS Pep Rally
4. At Christmas-time
5. Ginny Isvick, *orator*
6. For back-seat drivers
7. Our first Senior recital
8. Cheering the old folks
9. In our new SUB
10. Corky and Marilyn
11. Luther's Half-time Band





BUILD FOR CHARACTER



1. Daily exercises
2. Football rally
3. Guess what this is!
4. Campus Day Scheduler
5. Parkland's "New Look"
6. The Big Bosses



- | | |
|--------------------------|------------------------------|
| 7. Homecoming Crew | 10. SUB Lounge reception |
| 8. Emely and Hal—May Day | 11. Hallowe'en Mask-her-aide |
| 9. Campus Day Fun | 12. "Midnight Fantasy" |





WALT KUNSCHAK

Associated Student Body

The student body office in Old Main, and eventually the new office in the Student Union Building, was the scene of weekly meetings where problems brought up through the Question Box or student body meetings were considered.

Under the guiding hand of President Walter Kunschak, the council has directed activities including the Freshman Mixer, March of Dimes and Community Chest Campaigns, Homecoming Celebration, Northwest Christmas Ship and Red Cross Drives, Saga Carnival, Football and Basketball Banquets, Campus Day, May Day Festivities, and the All-School Picnic.

President Kunschak's council included:

Vice President.....Melvin Osterli
 SecretaryAnita Roth
 TreasurerDick Haglund
 Advertising Manager.....John Nicolai

Class representatives to the council:

FreshmanMalcolm Soine
 SophomoreJoe Cromarty
 JuniorCarl Fynboe
 SeniorHoward Willis and Rudy Johnson

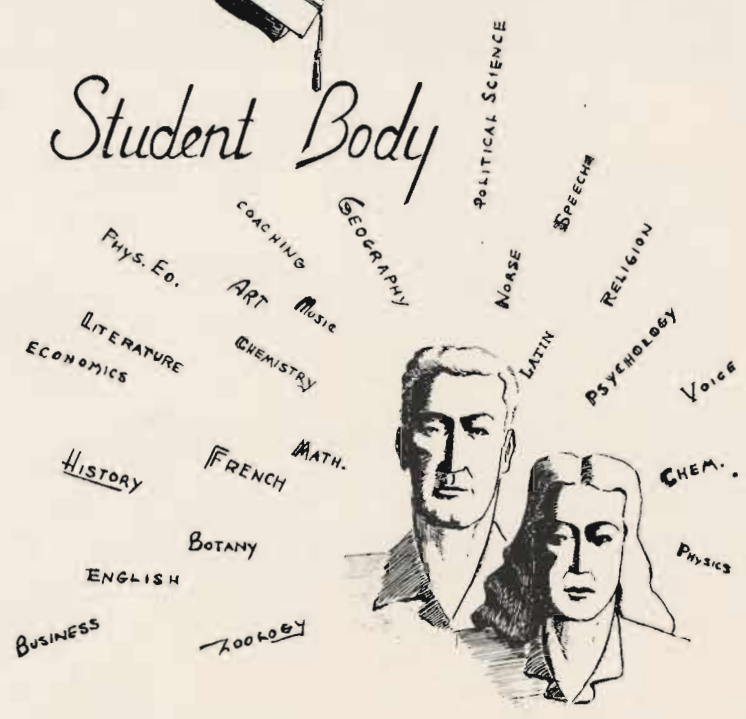
Working with the cabinet for cooperation between the administration, faculty, and student body, was Doctor Hauge, faculty adviser to the student council.

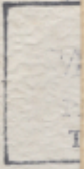
New legislation passed by the student body during the year included the adoption of a new constitution and the passing of the Saga Fee Proposal which incorporates the school annual fee into the initial fees paid upon entrance each school year.



Seated: A. Roth, Kunschak, D. Haglund. Standing: Osterli, Soine, Cromarty, Nicolai, C. Fynboe, R. Johnson.

Student Body







S. Anderson, Kylo, E. Ahrendt, R. Johnson, Milbrath

Class of 1948

With four years of constant change behind them, the Senior Class of 1948 emerges the mightiest (in number) in the history of our Alma Mater. They have seen the college grow in facilities from the new plaster in the halls of Old Main to the beautiful new buildings which grace the campus. They have watched the enrollment grow from a bare 200 to a strong 800. They have seen returned-service men join the ranks of students at P. L. C.

Now the doors are closed on four glorious years of college life. But as one door is closed, another is opened to the future.

Rudy Johnson directed the activities of the class during the year. Assisting were Earl Milbrath, vice-president; Evangeline Ahrendt, secretary; Semon Anderson, treasurer; and Eldon Kylo, sergeant-at-arms. Mr Alvin Fritz was chosen as faculty adviser.

The outstanding activity of the year was the class-sponsored mixer, "Neath the Southern Moon." This was the first of such programs to be held in the newly-built Student Union.

AHRENDT, EVANGELINE

B.A. in Education; Minors: Hist. & Music; Orchestra 1; Fireside V. Pres. 2; Band 2, 3, 4; Senior Class Sec'y. 4.
"Handy in anybody's office."



CARLSON, GRACE

B.A. in Education. Minors: Art & Soc.
"A teasing twinkle under a shy smile."

ANDERSON, GUSTAF

B.A. in Education; Minors: Chem., Hlth & P.E.; Choir 1, 2, 3; Soph. Class Pres. 2; ASB V. Pres. 3; Basketball 3; Tawasi 2, 3, 4.
"A deep-drawling lover of good music, good food and good humor."



CARLSON, HAROLD

B.A. in Lib. Arts. Major: Biology. Minors: Soc. Science & Lit. Choir 1, 2, 3; ASB V. Pres. 2; May Day Co-Chairman 3; Vets' Club Treas. 3; Saga Editor 4.
"Big, blond, bashful; our boy 'Swede.'"

ANDERSON, SEMON

B.A. in Lib. Arts. Major: Hist.; Minors: Math & Physics; Basketball Mgr. 3, 4; Football Mgr. 4; Sen. Class Treas. 4.
"Always willing, always busy, always smiling."



CARLSON, RALPH

B.A. in Lib. Arts. Major: Soc. Minors: Hist. & Psych. Choir 3, 4; Tawasi 3, 4; Who's Who 4.
"Musical, masculine, and married to the Major's Daughter."

AUSE, KNUT

B.A. in Lib. Arts. Entered from College in Oslo, Norway, 3. Major: Bus. Admin. Minors: Hist. & Lang. Viking Club Sec'y. 3; Viking Club V. Pres. 4; Tennis Team 3, 4; Tawasi 3, 4; Saga King 4.
"Our own good-will ambassador from Norway."



CLAUSSEN, ETTA

B.A. in Lib. Arts. Major: Biology. Minors: Chem., Art & Religion. Mission Soc. Pres. 1; LDR V. Pres. 3, 4; DRG Pres. 4; Linne Soc. 4; Tassels 4.
"Quick, calm clever; collects friends with ease."

BRATLIE, JACK

B.A. in Education. Minors: P.E. & Hist. Basketball 1, 2; Baseball 3, 4; Football 1, 2, 3, 4.
"Bashful on the campus, but when he's up to bat, move out!"



COLLARD, ERNEST

B.A. in Lib. Arts; Pre-Theology. Entered from Wartburg College, Waverly, Iowa, and Wash. State 3; Major: Sociology. Minors: Religion & Greek; Mission Soc. V. Pres. 4; German Club Treas. 4; Fireside V. Pres. 4; Tawasi 4.
"A willing worker with a warm word for everyone."

BREDVOLD, ARDYS

B.A. in Lib. Arts. Major: Biology. Minors: Hist. & Bus. Moor Mast 1, 2, 3, 4; Ass. Ed. 2; Co-Ed. 3; ASB Sec'y. 2; One-act play 2; Chorus 1, 2; Pres. 2; Fireside Sec-Treas. 2; Linne Society 4; WAA; May Day Atten. 1, 2, 3; May Queen 4.
"Every inch a Queen."



CULBERTSON, FRANK

B.A. in Lib. Arts. Major: Sociology. Minors: Psych. & Bus. Admin. Debate & Oratory 4; Alpha Sigma Lambda 4; Who's Who 4.
"If we take out what we put into this world, Frank's booty will be bountiful."

DAVIDSON, MYRTLE

B.A. in Education; Minors: P.E. & Health, Hist. Viking Club V. Pres. 2; Chorus 2; W A A V. Pres. 3; WAA Cabinet 2, 3, 4; Linne Soc. 4.
"A good sport and a good sportsman."



GUNDERSON, RALPH

B.A. in Education; Minors: P.E., Math., Physics; Basketball 3; Baseball 3, 4.
"Watching 'Gundy' ply ball is PLC's privilege and any grandstand's pleasure."

ELEFSON, WALDO

B.A. in Education; Minors: Biology & P.E.
"You could hang your clothes out on his line."



GRATIAS, RONALD

B.A. in Lib. Arts; Major: Chem.; Minors: Math., Hist.; Golf Team 2, 3; Saga Comm. 4.
"When it comes to golf, he's on the course."

ELEFSON, WALLACE

B.A. in Lib. Arts; Major: Bus. Admin.; Minors: Psych. & Hist.; Alpha Sigma Lambda 4; Tawasi.
"For Wally a business major includes monkey-business."



HADLAND, ROBERT H.

B.A. in Lib. Arts; Major: Bus. Adm.; Minors: Psych., Speech; All-school Play 3; Moor. Mast 1, 2.
"He came with the 'Man Who Came to Dinner.' His name? Banjo."

GULHAUGEN, GRACE ELAINE

B.A. in Education; Minors: Music & Biology; Choir 1, 2, 3, 4; DPK Pres. 3; Saga Asst. Ed. 3, 4; LSA Council 3, 4; Tassels Pres. 4; Who's Who 4.
"Miss Scandinavia of PLC."



HAUGEN, RALPH

B.A. in Lib. Arts; Major: Speech; Minors: Lit. & Hist.; Alpha Psi Omega Co-cast Director; Tawasi Vice Chairman 4; ASB Council 2; French Club Pres.; All-school Plays 2, 3, 4; One-act Play 3; Debate and Oratory; Who's Who 4.
"His vocabulary makes you think; His subtle satire makes you smile."

GULHAUGEN, MARTIN

B.A. in Lib. Arts; Pre-Theology; Major: Sociology; Minors: Speech, Psych., Greek; Choir 1, 2, 3, 4; Pres. 4; Male Quartet 3; ASB V. Pres. 2; LSA Pres. 3; Tawasi 3; Who's Who 4.
"His version of 'Papa Was a Preacher' would be a knockout."



NELSON, ALMA HEEN

B.A. in Education; Minors: Art & Hist.; Saga Bus. Staff 1, 2, 3; AWS Soc. Chair. 3; DRG Cor. Sec'y. 2; Chorus 3.
"Her left hand is like her auburn hair; it sparkles!"

GULHAUGEN, RUMOHR

B.A. in Lib. Arts; Major: Music; Minors: Lit. & Biology; Choir 1, 2, 3, 4; Orchestra 1, 2, 3; LDR Cabinet 1, 2; WAA 1; All-school play 2; Moor. Mast Ad. Man. 2; Saga Ed. Staff 1, 3; Tassels 4; Who's Who 4; Piano Senior Recital 4.
"A friend of Bach and Beethoven, she introduced them to us."



HILLMAN, WESLEY

B.A. in Education; Minors: Speech, History; Fresh. Class Treas. 1; Fresh. Class V. Pres. 1; Choir; Alpha Psi Omega; Cheer Leader; 5% Club.
"A joker with pep and a packful of punch-lines."

HJELM, AFTON

B.A. in Education; Majors: Music & Ed.; Minor: Art; Choir 1, 2, 3, 4; Orchestra 1, 2, 3; Band 3; Girls' Trio 2, 4; AWS Treas. 2; DPK Soc. Chair 2; Saga Bus. Staff 3; ASB Cabinet 3; Homecoming Att. 3; May Dat Att. 4. "With Hjelm at the Helm sailing would be smooth."



HOLTHUSEN, PATRICIA

B.A. in Lib. Arts; Major: Art; Minors: Education & Religion; WAA. "Gentle, soft-spoken, smiling; A girl at peace with the world."



HOVLAND, GLADYS, R. N.

B.A. in Lib. Arts; Major: Science; Minors: Hist. & Soc.; Vets' Club Sec'y 3; (Registered Nurse, graduate of Tacoma General Hospital.)



ISVICK, VIRGINIA

B.A. in Education; Minors: Lit. and Speech; Christmas Play 1; Junior Class V. Pres. 3; WAA; Pi Kappa Delta Debate Tournaments to Oregon & California 4; Oratory Contest Winner 4. "When Ginny speaks, the judges sit up and listen!"



JAECH, WARREN

B.A. in Lib. Arts; Major: Chemistry; Minors: Physics & Math.; Soph. Class V. Pres. 2; Golf 2, 3; Tawasi 3, 4; Who's Who. "If he was behind the door, the brains would pass out!"



JOHNSON, MARGARET

B.A. in Education; Minors: Art and Math.; DRG Soc. Chairman 3; Chorus. "A lover of variety, she's been a Day Girl and a Dorm Girl."



JOHNSON, RUDOLPH

B.A. in Lib. Arts; Major: Music; Minors: Hist. & Soc. Choir 1, 2, 3, 4; Male Quartet 1, 2; Pres. Sen. Class 4; Tawasi. "A Heart-warming humor, a Santa Claus smile and a voice we'll long remember."



JOHNSON, RUTH

B.A. in Education; Minors: Lit. & Art; Moor. Mast 1, 2, 3, 4; Moor. Mast. Asst. Ed. 2; Moor. Mast Ed. 3; Moor. Mast Co-Ed. 4; PLC Tribune Cor. 1, 2; Tawasi 4; Who's Who. "Wide-awake, witty, and a writer of worth."



KELLER, JEAN

B.A. in Education; Minors: Hist. & Soc.; DRG V. Pres. 3; AWS Sec'y. 3. "A 3-year grad. in '46, she's already collected a supply of polished apples."



KENWORTHY, BETTY

B.A. in Lib. Arts; Major: Biol.; Minors: Psych., Soc. "A cute little model for AWS... or for anybody."



KLAPSTEIN, WALTER

B.A. in Lib. Arts; Major: Soc.; Minors: Psych. & Hist.; Debate; Tawasi. "His sincerity of speech and willingness to work are examples to all."



KUNSCHAK, WALTER

B.A. in Education; Majors: Ed. & History; Minor: Speech; Moor. Mast 1; Saga Bus. Staff 1; Saga Ad. Man. 2; Saga Bus. Man. 3; Fresh. Class V. Pres. 1; Soph. Class Pres. 2; Basketball 1, 2; All-school Play 2, 4; Chairman Tawasi 3; Debate 3; Co-chairman Homecoming 3; Alpha Psi Omega; A S B Pres. 4; Who's Who. "Six feet, five inches of laughs. Sometimes caustic, sometimes corny, but always funny."



LOETE, CHARLES

B.A. in Lib. Arts; Major: P.E.; Minors: Math. & Hist.; Baseball; Football.
"Long lanky, loose-jointed; a leader in Lute lineups."



MORGAN, SHIRLEY

B.A. in Lib. Arts; Major: Soc.; Minors: Biol. & Music; Choir; German Club Sec'y; WAA; DRG Campus Devotions Pres.
"A beauty with brains and the voice of a bird."

McGOUGH, RALPH

B.A. in Education; Pre-Med.; Minors: Chem. & Biol.; Golf Team.
"Piano pleaser, prize putter, and proud papa."



NEAL, GLENN

B.A. in Education; Minors: P.E. & Hist.; Football 1, 2; Basketball 2; Vets' Club V. Pres. 2; Lettermen's Club Sec-Treas. 3; Tawasi 4.
"An ex-pilot who packs a lot of personality."

METZGER, LETA

B.A. in Lib. Arts; Majors: Art & Music; Minor: Religion; LDR Treas. 1; Saga Bus. Staff 1, 2; Choir 1, 2, 3; Girls' Glee 1, 2; Little Symphony 1, 2, 3, 4; LSA Council 1, 2, 3, 4; Campus Devotions Cabinet 2; German Club Sec'y. 1; German Club V. Pres. 2; German Club So. Chair. 3; German Club V. Pres. 4; Moor. Mast. Ed. Staff 4.
"Her personality, like her poetry, is fresh and appealing."



NICOLAI, JOHN

B.A. in Lib. Arts. Entered from San Francisco State College. Minors: Psych. & Speech; Band 2, 3, 4; Pres. 3; Choir 2, 3, 4; V. Pres. 3; Moor. Mast Ad. Man. 3; Male Quartet 3, 4; Fireside Pres. 3; ASB Bus. Man. 4; Tawasi; Who's Who.
"The Co-ed's Casanova; a red-headed organizer with plenty of fire."

METZGER, TELMA

B.A. in Education; Minors: Hist. & Lit. German Club V. Pres. 1; German Club Pres. 2; LSA Council 1, 2; Sec-Treas. 1; Campus Devotions V. Pres. 1; Girls' Glee 1; Saga Bus. Staff 1; Moor. Mast Ed. Staff 1, 2, 4; Junior Class Treas. 3; Tassels 4.
"A high I. Q. with high honors and high ideals."



OAKLAND, GWENDOLYN

B.A. in Lib. Arts. Entered from Augustana College, Sioux Falls, So. Dak. 4; Major: Hist.; Minors: Psych., Chem., Biology.
"As gentle as her voice; as pretty as her picture."

MILBRATH EARL

B.A. in Lib. Arts; Pre-Theology; attended City College, New York. Major: Hist.; Minors: Greek & Religion; Choir 3; Sen. Class V. Pres. 4; Tawasi.
"A keen mind; a kind heart; a capable hand."



PFLUEGER, RUTH

B.A. in Lib. Arts; Major: P.E. & Hlth.; Minors: Psych. & Hist.; ASB Council 2; WAA Treas. 2; Roller Blades Pres. 2; Saga Ed Staff 2, 3; May Day Co-Chair. 3; Junior Class Sec'y. 3; WAA Pres. 3.
"Everybody's friend; a P. K. with pep."

MOEN, MAYNARD

B.A. in Lib. Arts; Pre-Theology; Major: Soc.; Minors: Greek & Speech; Choir 1; Chorus 2; Campus Devotions Pres. 1; Tawasi Chairman 4.
"Keeper of the Tees."



POLILLO, PAUL

B.A. in Education; Minors: Soc. & Hist.; Lettermen's Club Sec'y. 3; Basketball 1, 2, 3; Football 1, 2, 3, 4.
"A well-known name among sports stand-bys."

PURVIS, PATRICIA

B.A. in Lib. Arts; Major: Speech; Minors: Hist. & Lit.; Choir 1, 2, 3, 4; Cheer Leader 2; All-school Play Stud. Dir. 2, 3, 4; WAA Cabinet 3; Alpha Psi Omega 3, 4; Co-Cast Dir. 4; Roller Blades Sec'y. 3.

"First-class dresser, skater, and thinker."

RIEKE, BETTY LOU

B.A. in Lib. Arts; Major: Music; Minors: Religion & Soc.; Girls' Glee 1; String Quartet 1, 2; Orchestra 1, 2, 3, 4; Choir 1, 2, 3, 4; Mission Soc. PTM Sec'y. 1; Saga Ed. Staff 3; LSA Council 3; Pres. 4; May Day Attendant 3; Tassels Historian 4; Who's Who. *"Her manner is like her violin—melodious magnetic, mellow."*

ROOT, HARRIETT

B.A. in Lib. Arts. Entered from U. of So. Cal. 2; Majors: Soc., Music; Minor: Religion; Orchestra 2, 3; Band 2, 3, 4; Mission Soc. Sec'y. 2; Fireside Sec'y 3; LSA Regional Sec'y 4; Choir 3, 4. *"A tiny package, but potent!"*

ROTH, ANITA

B.A. in Lib. Arts; Major: Lit. Minors: Religion & Speech; Fireside V. Pres. 1; ASB Bus. Man. 2; Moor. Mast Ed. Staff 1, 2, 3, 4; AWS Pres. 3; WAA Treas. 3; Homecoming Attend. 3; Homecoming Co-Chair. 3; LDR Council 4; All-school Play 4; Saga Ed. Staff 4; ASB Sec'y. 4; May Day Attend. 4; Tassels 4. *"Sparkles plenty."*

RUSSELL, PATRICIA

B.A. in Education; Minors: Art, Soc.; Chorus. *She'll teach with her pal, Margaret., in Chehalis.*

SEVERSON, LYLE

B.A. in Lib. Arts; Major: Music; Minors: Norw., Bus. Ad.; Band Pres. 4; Choir 4; Tawasi 4; Male Quartet 4. *"He loves his music. So do we!"*



SKILBRED, NORENE

B.A. in Lib. Arts; Major: Art; Minors: Religion & Music; Choir 1, 2, 3, 4; Fireside Sec'y-Treas. 2; Viking Club Pres. 3; LDR Treas. 3; AWS Pub. Chair. 3; Saga Art Ed. 3; AWS V. Pres. 4; Mission Soc. V. Pres. 3.

"With art in her fingers, everyone knows, she will have beauty wherever she goes."

SKOOG, BRITA

B.A. in Lib. Arts; Major: Biol.; Minors: Chem., Religion; Girls' Glee 1; Soph. Class Sec'y. 2; Co-ch. All-school picnic 2; Choir 1, 2, 3, 4; DPK Council 4; LDR Sec'y. 4; Tassels 4.

"Honey-colored hair, a honey-sweet voice, and a honey-moon soon."

STEIRO, ORNA

B.A. in Lib. Arts; Major: Bus. Ad.; Minors: Hist., Norw.; Saga Bus. Staff 1, 2, 3; Chorus 3; Viking Club Treas. 3; Viking Club Sec'y. 4.

"A little blonde bundle of blushes."

THENO, MILTON

B.A. in Education; Minors: Math, Hist.; Basketball 2, 3; Saga King 2.

"With that million-dollar grin, he'll always be a king."

THORP SELMER

B.A. in Education; Minors: Hist., Soc.; Soph. Class Sgt. at Arms 2; Vets' Club Sgt. at Arms 2; Junior Class Sgt. at Arms 3; Vets' Club Pres. 3; Saga Comm. 2; Bus. Club Sec'y-Treas. 4; 5% Club.

"A big man with big hands and a big heart."

TOWE, ARNOLD

B.A. in Lib. Arts; Major: Biol.; Minors: Psych., History, Soc.; Choir; Track.

"A serious student, carrying a heavy load, with high honors."

ROBERTS, LYDIA

B.A. in Lib. Arts; Major: Music; Minors: Soc.; Art; Girls' Trio 2, 3; Choir 1, 2, 3, 4; Soloist 1, 2, 3, 4.
"The Choir of the West's pride and joy."



ROBERTS, DAVE

B.A. in Education; Minors: Soc., Hist.; Moor. Mast Ed. Staff.
"Capably quiet. But with a song-bird like Lydia, who wants to talk?"

ULRICH, PAUL

B.A. in Education; Minors: Math, Hist.; Basketball 2, 3.
"Always ready with a big smile and a hearty hello."



VINJE, DORIS

B.A. in Lib. Arts; Entered from St. Olaf Col. 3; Major: Soc.; Minors: Religion, Psych.; Chorus 3; LSA Council 3, 4; Choir 4; LDR Pres. 4; Homecoming Queen 4.
"Another inspiring example of the reason for PLC."

VANDER STOEP, CLAUDE

B.A. in Lib. Arts; Major: Speech; Minors: Religion, Hist.; All-school Play 3; Campus Devotions Pres. 4.
"His eyes—deep blue,
His thoughts—deep, too."



WILLIS, HOWARD

B.A. in Education; Minors: P.E., Bus. Ad., Hist.; Tennis 1, 2; Basketball 1, 2, 3, 4; ASB Council 4.
"A friendly face, a smooth sportsman; that's Fuzzy!"

ZELLMER, GERHARDT

B.A. in Lib. Arts; Pre-Theology; Major: Biol.; Minors: Greek & History; Mission Soc. Pres. 4; Track 4; Entered from S.L.I. and Tulane Univ.
"A personality as glowing as the philosophy he lives by."



NO PICTURES

AHRENS, EARL

B.A. in Lib. Art; Major: Religion; Minors: Hist. Psych.
Returned missionary from Br. Camerouns, West. Africa.

HAUGE, ROBERT

B.A. in Education; Minors: P.E., Hist.; ASB Treas. 3; Football; Basketball; Tawasi.
"Big and bashful, but everybody's buddy."

KLINE, BARBARA

B.A. in Lib. Arts; Major: Chem.; Minors: Math., Physics.
"A match for the men in science or math."

ALLEN, MERVIN

B.A. in Education; Minors: P.E., Hist.
"PLC is plenty proud when this pitcher winds up."

HURLBURT ROBERT

B.A. in Education
Grad. in '39 with War Cent.

LYNNE, JOCELYN

B.A. in Education; Minors: Art, Soc. Science; LSA Council 2; Moor. Mast Bus. Staff 2.
"Already an active part of the education system."

FUHR, NATHAN

B.A. in Lib. Arts; Major: Biol.; Minors: Hist., Psych.; Tennis Team 3, 4; Tawasi.
"A flash with a racquet, and what a racket!"

IRBY, PEARL

B.A. Education; Minors: Hist., Eng.
"A welcome addition to the to the teaching profession."

PUGH, PATRICIA

B.A. in Education.

KABLE, MARGARET

B.A. in Education; Minors: Lit., Biol.
"Clever, calm, chic."

QUESTAD, WALLACE

B.A. in Lib. Arts; Major: Chem.; Minors: Hist., Psych.



Seated: Rieke, G. Gulhaugen, R. Gulhaugen, Johnson. Standing: Jaech, Nicolai, M. Gulhaugen, Carlson, Kunschak, Kyлло, Culbertson, Haugen.

Who's Who

Twelve PLC seniors were chosen for placement in the 1947-48 edition of *Who's Who Among Students in American Universities and Colleges*. The seniors, recommended by the faculty, are selected by the *Who's Who* publication committee. Selections are made on the basis of scholarship, character, contributions to extra-curricular and community activities, and potentiality for future usefulness in the business world and society.

Following are this year's selectees:

FRANK CULBERTSON, debate, French Club, Veterans' Club.

GRACE ELAINE GULHAUGEN, chairman of Tassels, DPK president, PLC Choir secretary, assistant editor of the Saga, Mooring Mast business manager, LSA Council.

MARTIN GULHAUGEN, president of Pacific Northwest LSA, Fireside and Choir, ASB vice-president, Tawasi.

RUMOHR GULHAUGEN, LDR vice president, Saga editorial staff, Spring Play of 1946, Tassels, Choir of the West, Fireside, Mission Society.

RALPH HAUGEN, vice-chairman of Tawasi, French Club president, representative to ASB Council, debate squad, and co-cast director of Alpha Psi Omega.

WARREN JAECH, Tawasi, sophomore class vice president, member of golf team.

RUTH JOHNSON, Mooring Mast (co-editor, 1946, editor, 1947), Saga editorial staff, dramatic activities, Tassels, debate squad, Viking Club.

WALTER KUNSCHAK, 1947-48 ASB president, chairman of Tawasi, sophomore class president, Lettermen's Club, Saga staff, Mooring Mast staff, debate squad, and Alpha Psi Omega.

ELDON KYLLO, Tawasi, president of junior class, Glider Club, and Veterans' Club, representative to ASB Council, and active on football and basketball teams.

JOHN NICOLAI, ASB business manager 1948, Tawasi, men's quartet, Mooring Mast advertising manager, president of College Band, PLC Choir vice-president, LSA Council.

BETTY LOU RIEKE, LSA president, vice-president of Campus Devotions, LSR treasurer, Saga editorial staff, Tassels historian, Fireside, PLC Choir, orchestra, and string quartet.

The two-fold purpose of *Who's Who Among Students* is to give national recognition to deserving students who have been outstanding in various fields and to recommend successful students for placement in the business and professional world.

Juniors

Under the spirited leadership of Vern Fink, the Junior Class has had a very eventful year. Other officers chosen were vice president, Gladys Lea; secretary, JoAnn Harshman; treasurer, Gary Dammel; adviser, Mr. Ramstad.

The class got off to a booming start by ordering their class rings and pins early, so that they can be worn next fall.

A roller skating party was held at Redondo Roller Rink on January 6. At the Saga Carnival in March, their booth was a ball throw, which proved to be quite entertaining to everyone. The high-light of the year was a cruise which was an all-student body affair.

With many eventful moments behind them, this group is looking forward to a Senior year which will be their best year at P. L. C.

First Row: Martens, Reiman, Hellbaum, Casavant, Klippen, Pearson, Lea, McAllister, Breum, Harshman, D. Elfson, J. Foss. *Second Row:* Pedersen, G. Dammel, Gamm, Robert Bischoff, Harry Carlson, S. Williamsen, Kraxberger, Stenberg, Sandvig, Stolte, Gerstmann, Howard Larson, Soiland. *Third Row:* Schedler, Jorgenson, Swartz, D. Steiro, Danielson, Gunderson, D. Berg, Westberg, R. Watness, L. Watness. *Fourth Row:* Colburn, Szabo, Peterson, L. Storaasli, Kauth, Rude, Snow, Westberg, Kylo, Fink.





First Row: Gabrielson, Brock, Turman, Garner, Andrew, Blair, Dorothy, Christensen, Cliff Allen, Albertson, Gannon, R. Baird. *Second Row:* Eines, Don Anderson, Dorwin, Christofferson, Cementina, Faaren, Brunner, Cook, Folsom, Fallstrom, Falk, Christian, E. Anderson. *Third Row:* F. Anderson, Birkliid, Etzel, Esse, Dykstra, Gottwald, Gibson, Busch, Brynestad, M. Bowen, Gillam, Cleven.

Sophomores

With President Dareld Satern at the "helm," the Sophomore Class of 1947-48 completed a year of "smooth sailing" in fun and activity. Assisting Dareld on the class council were Larry Hauge as vice-president, Phyllis Brynestad as secretary, Beverly Wigen as treasurer, and Norman Cromarty as ASB representative.

The first task undertaken by the sophomores for the fall term took place during the Homecoming festivities of October when the class sponsored the Pep Rally for the PLC-Bellingham game. Co-chairmen for the event were Eddie Dorothy and Beverly Busch.

The highlight of the spring activities for the class as well as other organizations on the campus was the Saga Carnival of March 14. The sophs were represented in this annual event in booth activity. Committee leadership for the booth consisted in Duane Nordstrom, W. Christiansen, Delores Langset, and Ernie Cementina.

With total enrollment of 257 for the year, divided 200 to 57 in favor of the masculine sex, the second-year students look forward to another activity-packed year.



First Row: Ludwick, Eckler, D. Haglund, Josi, J. Jaech, R. Larsen, Loper, S. McLaughlin, Mason, H. McLaughlin, McKanna, McDonnel. *Second Row:* Kjesbu, S. Hewston, O. Aakre, Halvorson, N. Knutsen, J. Hewston, Hanson, Martinson, N. Hendrickson, Nothstein, Lobeda, Ness, W. McLaughlin. *Third Row:* C. Olsen, Langset, Knutson, E. Ordahl, E. Haglund, J. Larson, P. Nygaard, Kilmer, Mykland, Hetle, B. Heen, McLean, A. Olson.

- PLC -

First Row: Satern, Neilsen, Read, Staats, Gano, Zier, Abrahamsen, Valentine, Butzberger, Boreson, Cheatley, Klett. *Second Row:* B. Pitzler, D. Pitzler, Reiss, Hellman, Nieman, Williamson, Tiedeman, L. Thompson, Whitely, Liljas, Reetz, Proud, Pavia. *Third Row:* Wallen, Ruffcorn, Schramm, Ross, Ramberget, H. Peterson, Wold, Wigen, Stephenson, Schwisow, Rygg, Wallace, E. Smith. *Fourth Row:* R. Rose, Skartland, B. Williams, Solvik, Torgeson, Reitz, Byrd, Ross, Ramstad, M. Pflueger, Plueger, K. Storaasli.





First Row: Bramer, S. Christiansen, Foss, H. Bowen, Carpy, Fikse, Elmstedt, Festin, Grove, Bentson, L. Anderson, Bode. *Second Row:* Deetz, Cummings, Espetveit, Benjaminson, Franke, D. Berg, Bartanen, M. Anderson, Demers, Fulton, Brown, H. Berg, Calavan, Beckman. *Third Row:* Ross, Arlton, Breuer, Albrecht, B. Ericson, Clark, H. Erickson, Amble, Bucholz, M. Cheesman, Ekle, J. Cooper. *Fourth Row:* Brass, Elberson, Antonson, Bowron, W. Blegen, C. Blegen, Fromader, Eldal, Evanson, C. Cheesman, Belland, Bennett, B. Anderson.

Freshmen

Entering in the fall of 1947 were 347 aspiring freshmen. Shortly after the opening of a new school year, the class chose Lowell Knutson as its president. Assisting him in the various offices were Gerald "Doc" Larsen, vice-president; Ray Tobiason, treasurer; Wesley Benson, sergeant-at-arms; Maria Ogren, secretary; and Malcolm Soine, ASB representative. Mr. Paul Reigstad, a graduate of St. Olaf who is completing his first year at PLC, was chosen as class adviser.

Among the activities of the class was the impressive and inspiring Christmas candlelight service presented as one of the pre-holiday events.

After school had really begun, it was no time at all until this class was a very definite part of the well-known "family" of PLC.



First Row: Leitz, D. Keller, I. Larson, McLaren, B. Keller, Lorenzen, C. Knutson, Killmer. *Second Row:* Keebler, Moeller, M. Hansen, Kap, L. Johnson, Holle, Meyer, Larm, Hedin, H. Hanson, King, Hagen. *Third Row:* B. Larson, Hegstad, Maloy, Lucas, S. Larson, Hendrickson, Helling, Kostad, Knutson, Malnes, Koch. *Fourth Row:* Merz, Myrland, Hedlund, White, Jeter, Hefty, Lunde, Kerns, Munson, Mobley, J. Hansen.

- PLC -

First Row: Paulson, D. Reed, Overby, Hall, Woldseth, Stacy, Wildemoe, Tvedt, Huber, Wilhelm, Sullivan, *Second Row:* Reid, Wellsandt, Stone, Burdick, G. Purvis, Rusinko, C. Rose, Ogren, Sanderson, Qualle, L. Swanson, Walker, Shaw, Pulsipher, Siqueland. *Third Row:* Sunset, D. Olson, Creso, Soine, Svare, Thompson, Thornberger, Ferguson, Christel, Shook, Greco, Hornby, Liljas. *Fourth Row:* Shull, Schrupp, B. Hanson, Peterson, Rohr, Pearson, Nobes, J. Olson, Guthrie, Roalkvam, Simons, Boreson.





JUNIOR CLASS OFFICERS

Gary Dammel, Gladys Lea, JoAnne Harshman, Vern Fink.

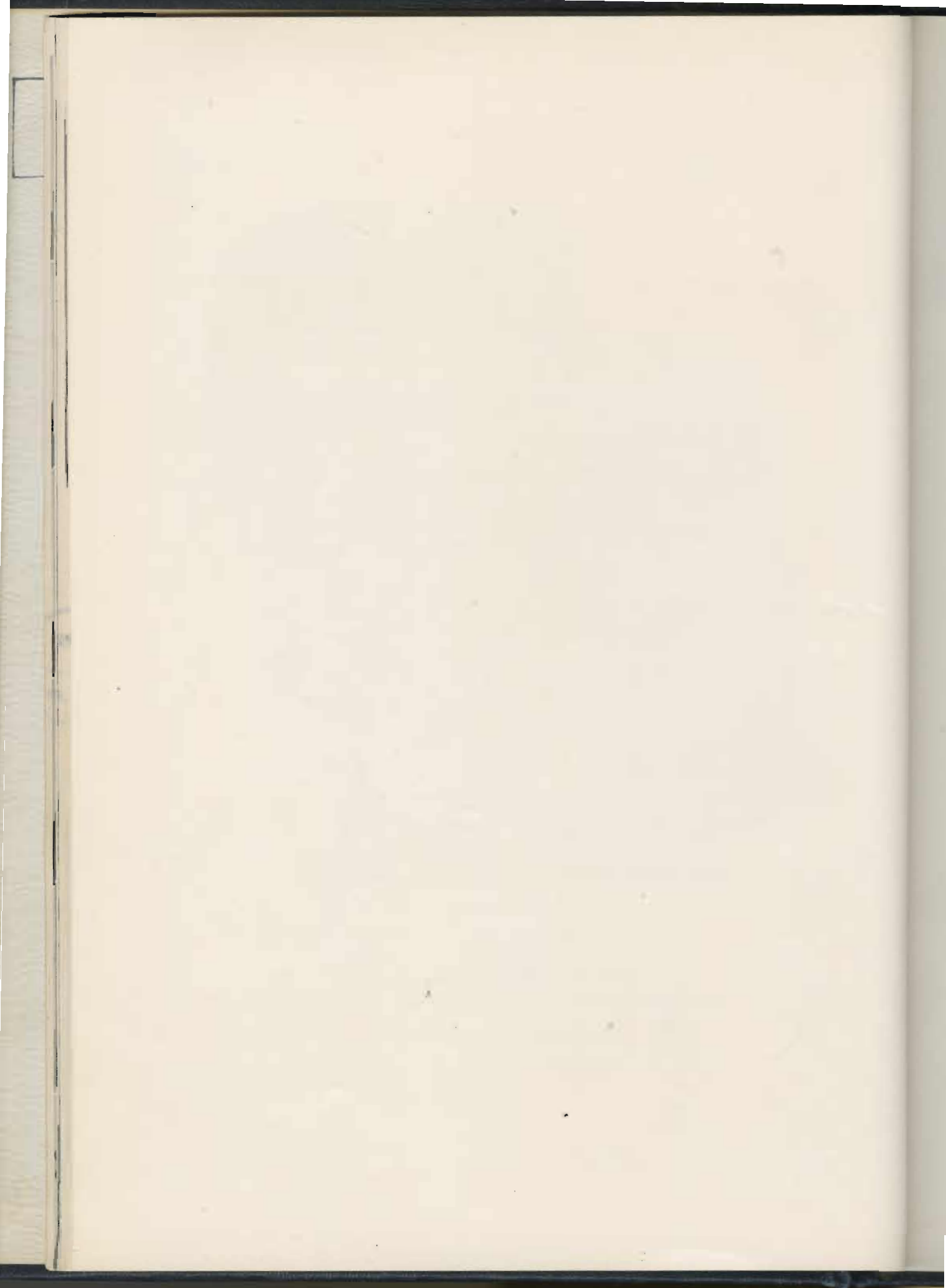
SOPHOMORE CLASS OFFICERS

Beverley Wigen, Phyllis Brynstad, Larry Hauge, Dareld Satern.

FRESHMAN CLASS OFFICERS

Wesley Benson, Maria Ogren, Lowell Knutson, Ray Tobiason.







Reading up: Klippen, Eide, Miss Knudsen, Zellmer, G. Gulhaugen, Shennum, Fink, Christofferson, Vander Stoep, M. Gulhaugen, L. Knutsen. *Across:* Rieke, Esse, Vinje, Mykland, C. Hansen, Harbeck.

L. S. A. Council

Lutheran Student Association of America was born about a quarter of a century ago; now it is international in scope, having representatives in nearly every major college in this country and overseas.

Locally, the L. S. A. Council heads up P. L. C.'s branch of the L. S. A. This council is made up of representatives from each of the four religious groups on the campus.

Betty Lou Rieke served as president during the year. Other officers were Marjorie Esse, vice-president; Lief Knutsen, secretary; and Charlotte Mykland, treasurer. Martin Gulhaugen, a member of our L. S. A., has served for two years as president of the Pacific Northwest Region L. S. A.; and Miss Knudson, the adviser of the local L. S. A., was convention leader, treasurer, and adviser of the Pacific Northwest Region L. S. A. meetings.

The chief purpose of the council is to coordinate the religious groups of the campus. The members have also been active in associated affairs. Last fall a number of the members attended the International convention, the "Ashram," at Monterey, California. The council also sponsored two L. S. A. Retreats, one at Camp Waskowitz in November; the other at Lutherhaven at Lake Couer d'Alene in April.

L. S. A. now looks ahead to future retreats and to continued fellowship in Christ.

Fireside

First Row: Fink, Bucholz, Christofferson, H. Erickson. *Second Row:* E. H. glund, Ogren, Torvend, Hedin, G. Gulhaugen. *Third Row:* Herman, Mykland, Wigen, Paul, Etzel. *Fourth Row:* M. Gulhaugen, Collard, Holle, Reed, Rieke, Langset, B. Kilmer.



At the beginning of the school year meetings were held around the fireplace in the reception room, but with the increased attendance the group moved to the Student Union Building. The chief objectives of Fireside are to promote Christian fellowship; to impress the need for continuous active membership in the church; and to cooperate with other religious organizations on the campus. Speakers for the meetings that were held twice a month on Sunday evenings were faculty members or students.

Officers elected to head Fireside during the fall semester were Vern Fink, president; Del Zier, vice-president; Vivian Hurtig, secretary-treasurer; and Bill Williams, fire chief. Spring semester officers were Chauncey Christofferson, president; Ernest Collard, vice-president; Marjorie Paul, secretary-treasurer; Walter Braafladt, tract rack chairman; and Don Reid, book carrier. Jackie Klippen and Charlotte Mykland were the Fireside representatives to the L. S. A. Council. The adviser for the group was Mr. Nodtvedt.

- P L C -

Mission Society meets twice a month, its members sharing their enthusiasm for the advancement of foreign missions. Interesting information concerning missions is presented at each meeting, and contributions are made for the furthering of foreign mission work. Members make weekly visits to the Crisswell and Midland Old Folks' Homes.

Fall semester officers were Gerhard Zellmer, president; Ernest Collard, vice-president; Jackie Klippen, secretary-treasurer. Spring semester officers elected were Luther Shennum, president; Bill Williams, vice-president; Joyce Ruffcorn, secretary-treasurer. Leif Knutsen and Jean Harbeck were elected LSA representatives and Emily Sholseth served as Pocket Testament secretary for the entire year. Our adviser is Dr. J. P. Pflueger.



Mission Society

First Row: Samsbury, Etzel, Ogren, C. Rose, Schedler, Zellmer, O. Steire. *Second Row:* Harvey, Sanderson, Kuebler, Sandvig, H. Carlson, Klippen. *Third Row:* Meyer, Ruffcorn, G. Schmidt, Paul, Jost, Christofferson, Roth. *Fourth Row:* Collard, B. Williams, Holle, Kraeberger, Stolte, C. Hansen, A. Westberg, H. Westberg.



Campus Devotions

First Row: Rev. Roe, H. Erickson, Buchholz, A. Westberg, Paul, Eide, Baker, C. Rose, Snow.
Second Row: M. tousek, Rieke, H. Westberg, Brunner, Morgan, V. Schmidt, Gerstmann, Holle.
Third Row: Skoog, McLean, G. Gulhaugen, Christofferson, Qualle, Keener, Ogren, Tobiasson, C. Hanson.
Fourth Row: Zimmerman, Claussen, Meyer, Josi, L. Knutson, O. Aakre, Eldal, Collard.

Campus Devotions is one of the many religious activities on the campus. It is open to all students and meets every Thursday noon for devotions and meditation upon the Word of God. Each meeting is carefully planned so there is special music and a special speaker.

The officers for the first semester were Claude Vander Stoep, president; Eric Gerstmann, vice-president; and Dorothy Meyer, secretary-treasurer. Second semester officers were Corlie Hanson, president; Louis Brunner, vice-president; and Ruth Holle, secretary-treasurer. Elaine Eide was the LSA representative for the entire year. Adviser for the group was the Rev. Kelmer Roe.

- PLC -

Lutheran Daughters of the Reformation has a four-fold purpose—to lead to God, to provide a means of expression, to acquaint with and train for Christian service, and to unite the societies of other young church women. The campus L. D. R. welcomes each woman student to its twice monthly meetings.

Projects for the year included the annual Treasure Chests, a Christmas gift for a child at the Parkland Children's Home in Everett, taking charge of the Sunday morning nursery at Trinity Lutheran Church and contributing to the Columbia Girls' School in Duitama, Columbia.

Miss Anne Knudson was adviser, and officers included: Doris Vinje, president; Etta Clausen, vice-president; Brita Skoog, secretary; Jean Harbeck, treasurer; and Betty Lou Rieke and Marjorie Esse, LSA representatives.

L. D. R.

Seated: Ruffcorn, D. Johnson, D. Berg, B. Kilmer, Meyer, Skilbred.
Standing: Wigen, Espetveit, Hurtig, Etzel, Vinje, M. Pflueger, Harbeck, Aune, Roth, Klippen, O. Steiro.





Seated: Ahrendt, L. Metzger, Rieke, Carlson, P. Braalladt, Eide, C. Watness, Abrahamson, Antonson, Stover, T. Baird, Danielson, Reed, W. Braalladt, Winters, Saas. Standing: Mr. Gestantas, Jorgenson, Newbert, Houge.

Little Symphony

This year P. L. C.'s "Little Symphony" was under the direction of Mr. Charles Gestantas. Although the membership was small, the orchestra gave several creditable performances. They appeared in a chapel concert early in the year, at the Christmas concert, at Baccalaureate, and at a concert presented in the Student Union Building on April 25. They also played at a nationwide Thanksgiving banquet in Tacoma.

Band

Although still without uniforms, the band this year made several commendable appearances. They lent the necessary touch of spirit and color to the pep rallies and football and basketball games, even taking buses to the games played at Ellensburg, Portland, and Cheney. Aside from these appearances the band played at the dedication of the Science Hall, at the May Day festivities, and at Commencement exercises.

First Row: Abrahamson, Mykland, G. Purvis, Nörman, H. Jensen, Saas, Winters, *Second Row:* Mr. Malmin, R. Rose, Demers, Antonson, E. Smith, Nicolai, Severson, R. Buird, Wellsandt, Ev. Ahrendt, Root, C. Watness, Reed, Berndt, Eu. Ahrendt, J. Williamson.





First Row: Root, Busching, Rieke, Purvis, Harbeck, Schwisow, Skilbred, Hesla, Hjelm, Hellbaum, Wallen, R. Gulhaugen. *Second Row:* Mr. Malmin, Wigen, Roberts, E. Haglund, Pflueger, Ramstad, Pearson, M. Haglund, Ordahl, Reiman, Jorgenson, G. Carlson, Martens, Hanson, Mrs. Young. *Third Row:* Wohlheuter, Rose, Braafladt, Osterli, G. Gulhaugen, Helen Jensen, Skoog, Meyer, Sholseth, Vinje, Solvik, Ahrendt, Severson, H. Carlson. *Fourth Row:* S. Williamsen, C. Johnson, J. Williamson, Brunner, D. Haglund, H. Jensen, Saas, R. Johnson, Aakre, M. Gulhaugen, Svare, Nicolai, Watness, Sandvig.

Choir of the West

With plans for a tour of sunny California, the '47-48 choir of fifty-six voices began an eventful year.

On November 9 the choir made its first appearance at the dedication of the Science Hall. Later in the season they appeared in Bothell and Seattle. At Christmas time the choir and the chorus presented a concert in the Memorial Gymnasium.

A seventeen-day tour of Oregon and California highlighted the season. After the last exam had been handed in, the choristers left on January 30 for Portland, Oregon, for the first concert of the twenty-first annual tour. The itinerary included San Francisco, Oakland, San Diego, Sacramento, and other cities in California.

Later in the spring the choir made a short weekend tour, singing in Stanwood, Bellingham and Everett, Washington, and Vancouver, British Columbia.

Soloists this year with the choir were Lydia Lentz Roberts and Helen Ramstad, sopranos; Marie Haglund, alto; Charles Martin and Rudy Johnson, tenors; and Jess Thompson, bass. The officers were Martin Gulhaugen, president; Ed Sandvig, vice-president; and Dorothy Meyer, secretary-treasurer.

Much of the success of the choir this season can be attributed to the inspiring leadership of its director, Mr. Malmin, and to Mrs. Walter E. Young, business manager.





First Row: Mr. Malmin, H. Berg, P. Killmer, Densow, Herman, Ogren, Etzel, M. Johnson, J. Foss, Eide, Gottwald, R. Watness, Wellsandt. *Second Row:* L. Johnson, Kap, Overby, Elmstedt, Hetle, Keebler, L. Metzger, Busch, Sperstad, Holle, Deetz, Paul, Woldseth. *Third Row:* Gerstmann, Zier, Christofferson, Colburn, B. Kilmer, D. Johnson, Aune, Bode, Sanderson, Loper, Faaren, B. Baird, B. Williams, H. Erickson. *Fourth Row:* Read, Reed, N. Knutsen, P. Leque, Soiland, W. Braafladt, R. Baird, Reitz, L. Knutsen, Antonson, Molter, Aakre, Schedler, Abrahamson, Josi.

Chorus

Under the direction of Mr. Malmin, the PLC Chorus, having approximately 80 members, appeared on various occasions during the year. Among these was the dedication of the Student Union Building on February 8, 1948.

Ralph Baird was president for the year, assisted by Beth Gottwald, vice-president, and Blanche Kilmer, secretary-treasurer.

The Girls' Trio was frequently heard on programs in Tacoma and on the campus. The trio consisted of Evangeline Ordahl, Marie Haglund and Afton Hjelm.

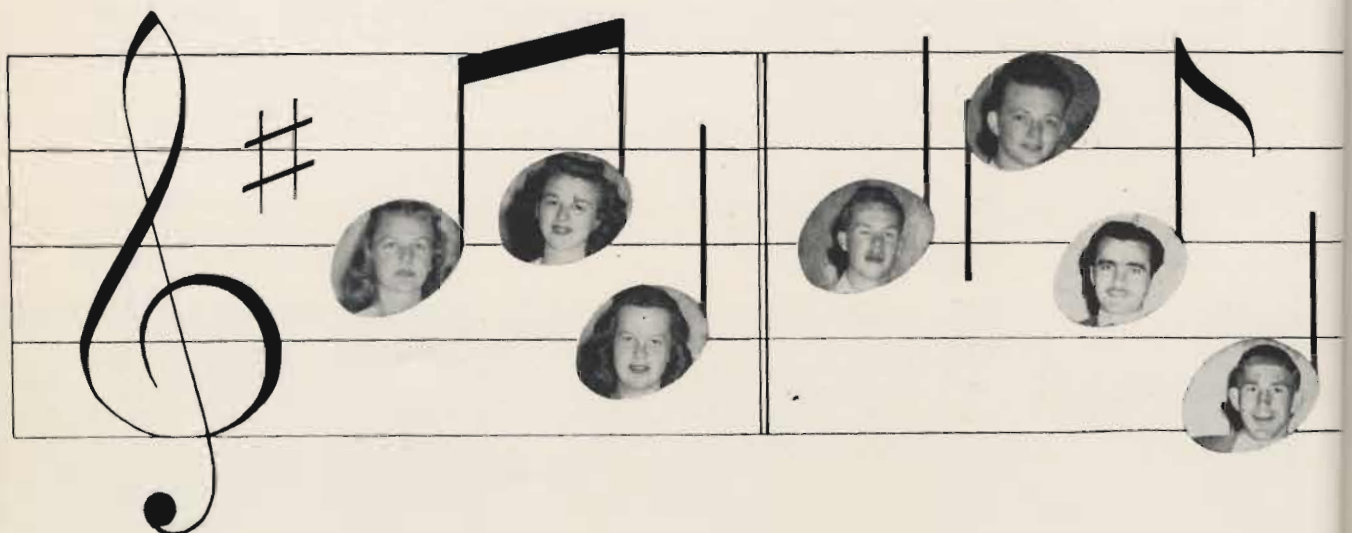
One of the most popular small organizations was the Men's Quartet. The quartet also sang at various places during the year. Members of the quartet were John Nicolai, Dick Svare, Jim Williamson and Lyle Severson.

TRIO

Hjelm, Ordahl, Haglund

QUARTET

Svare, Williamson, Severson, Nicolai





Tassels

G. Gulhaugen, T. Metzger, Skoog,
R. Gulhaugen, Claussen, Rieke,
Roth.

Tassels, the senior women's honorary, was organized this year, "to serve as an incentive to the women of Pacific Lutheran College to strive toward higher scholastic achievements, and to recognize high scholarship and leadership in social and cultural activities of this school."

Initiating its activities, the members became the senior guides for the women of the freshman class, which was this year's project.

Grace Elaine Gulhaugen was chairman of the honorary, and Betty Lou Rieke was the historian. Miss Grace Blomquist acted as the adviser.

Eligibility for membership is based on scholarship, which means a "B" average, and cultural and social contributions to PLC. New members are announced at the annual AWS May Day Tea.

The group hopes eventually to become affiliated with the Mortor Board, the national senior women's honorary.

- PLC -

From last year's freshman class a group of twelve girls was chosen by the AWS to serve an apprenticeship to the national sophomore honorary, the Spurs. The qualifications for these girls are participation in extra-curricular activities, leadership, and scholarship. Their chief aim is to serve the school and to promote pep and enthusiasm.

As service projects the girls helped to orientate the freshmen entering school at the beginning of the second semester, showed visiting high school girls around the campus, decorated the goal posts at football games, and ushered at the Christmas concert. They also planned many other activities for the school year, such as keeping an activity calendar and helping with the student body elections.

The constitution is under way and will be patterned after that of the national honorary. Marjorie Esse served as president and Elaine Eide as secretary. Miss Grace Blomquist is the adviser.

Sohos

First Row: B. Heen, Stephenson,
Wallace, Wigen, Eide, E. Haglund.
Second Row: M. Pflueger, Danielson,
Esse, Sholseth, Mykland, Rasmussen.





Tawasi

First Row: W. Jaech, Haugen, Fink, Moen, Aulse, Bumgardner, Severson, Klapstein, Howard Larson. *Second Row:* Osterli, Neal, Gulhaugen, Johnson, Sandvig, Milbrath. *Third Row:* Nicolai, Kunschak, Kylo, Col-lard, Carlson, Fynboe.

Tawasi is the Men's Honorary Club, again very active on our campus this year.

The elected officers for this school year were Maynard Moen, chairman; Ralph Haugen, vice-chairman; and Lee Folsom, secretary. Mr. Eklund, the Dean of Men, is the efficient adviser of the club.

The activities of Tawasi have been numerous. The main work was counseling for male freshmen students on our campus, carried on solely by members of Tawasi. The Red Cross Drive was led by Tawasi and the men also officiated at all football games for the season.

- PLC -

Stimulated by the club's largest membership stemming from the Gladiators' multiple Winco Conference championships, the chenille holders climaxed an eventful year. The organization guided by its president, "Little-All-America" Don D'Andrea, vice-president Doane Blair, and secretary Paul Polillo, became increasingly active as the year progressed in both social and service endeavors.

The lettermen sponsored and managed intramural sports, a service which became the club's annual duty. Gene Strandness was the boss of the 21 team basketball league, whose championship went to the "Meatpackers" for the second straight year. Incidentally, the "Meatpackers" was a team comprised entirely of letter winners.

Walt Hagen is managing the affairs of the softball circuit which is still in progress as this goes to press.

On May 2, twenty-five members and their dates enjoyed an all-day cruise on Puget Sound aboard the "Gallant Lady." On the 16th of May a picnic was held at Moffett Lake.

Coaches Marv Tommervick and Marv Harshman held the post as faculty advisers to the club.

Lettermen's Club

First Row: Fink, Loper, Schafer, Strandness, Blair, Andrew, Malnes, Dorothy, Schrupp, Brass, Kylo, Proud, Gorud, Falk. *Second Row:* H. McLaughlin, Mason, W. McLaughlin, Kerns, Larson, McKanna, Garner, Loete, Hatley, Saxton, Gamm, Cook, Daniels, Fallstrom. *Third Row:* Knutson, Kauth, Dinmore, Sahli, Allen, Turman, Sturm.





Wallace, B. Heen, E. Haglund, Skilbred, Reiman, Hellbaum.

Associated Women Students

Associated Women Students, under the leadership of Eleanor Hellbaum, proved itself one of the most active groups on campus this year.

Giving the Big Sister Tea and sponsoring an information booth for new students during the first week of school were important parts of a program to welcome new girls and acquaint them with college life.

AWS also introduced and put into effect three major projects: a seventy-five dollar scholarship for a freshman girl; a Senior Girls' Honorary, Tassels; and a Sophomore Girls' Honorary, Sohos. It is hoped that these two groups will sometime in the future become part of national organizations.

In conjunction with sister organizations on other college and university campuses, AWS participated in the state-wide College Days program to acquaint high school girls with college life.

Other activities of the year included creating and operating a record request booth for the Saga Carnival, sponsoring a roller-skating party and a Spring Style Show, giving a May-Day Tea, and bringing in special speakers for meetings.

The year's officers were president, Eleanor Hellbaum; vice-president, Norene Skilbred; secretary, Edna Haglund; treasurer, Bonnie Heen; social chairman, Betty Reiman; and publicity chairman, Beverly Wallace.



First Row: Brynestad, I. Larson, Carpy, L. Anderson, Elefson, Martens, Velsvick. Second Row: Ramstad, Stacy, A. Olson, Knutson, McLaren, Keller, A. Heen, Hudson. Third Row: Shaw, Brown, Baker, Morgan, Oakland, Walters, H. Bowen. Fourth Row: Pflueger, Benson, Claussen, Holthusen, Bredvold, Langemo, Milbrath. Fifth Row: Woldseth, Fulton, McLean, Stephenson, M. Bowen. Sixth Row: Haglund, Hall, M. Hanson, B. Heen. Seventh Row: Hovland, Ordahl, Wall, Anderson, Demers.

Delta Rho Gamma

Delta Rho Gamma is an organization for all girls who live off campus. This year's girls have been under the capable leadership of President Etta Claussen, with other officers Shirley Morgan, vice-president; Charlene Martens, secretary; and Jacqueline Stephenson, treasurer.

The year was high-lighted by a change of quarters from the basement of the old Chapel to a new room, complete with kitchenette and lounge, in the Student Union Building. Other important events of the year included the Fall Installation Banquet; two slumber parties, each following DRG sponsored roller skating parties, in October and February; a Christmas party on December 12; the "Valentolo" Banquet in February; the traditional telegram booth at the Saga Carnival; and a week end house party in May.

The formal banquet held on St. Valentine's Day was uniquely called the "Valentolo" because the girls asked boys to be their guests for the evening. The banquet was very successful and was the only social event of its kind on the campus during the year.

Adviser for the group was Miss Lillian Langemo, PLC library assistant.





First Row: Root, O. Steiro, Ahrendt, Skilbred, A. Johnson, Eide, Rose, Schramm, C. Olsen. *Second Row:* G. Gulhaugen, L. Metzger, G. Purvis, Benjaminson, C. Knutson, Beckman, Smith, Ruffcorn. *Third Row:* Wallen, Busch, J. Larson, Nelson, Franke, Dolores Berg, Norheim, Gusland. *Fourth Row:* Langset, Nygaard, Rasmussen, Esse, Klippen, Vinje, Qualle, Holle, Paul. *Fifth Row:* Wallace, Freese, Haglund, Mykland, Rieke, C. Hanson, Whitmarsh. *Sixth Row:* Rygg, Schwisow, L. Johnson, Swanson, Wigen Ogren, Sanderson, Norman. *Seventh Row:* B. Kilmer, Etzel, H. Berg, Kap, Rankin, Elmstad, Stansbury. *Eighth Row:* Dykstra, Gottwald, Keller, Gibson, Harbeck, Casavant, Breum, J. Foss, Pearson. *Ninth Row:* Grove, Lorenzen, Cummings, Hedin, Hagen, Hetle, Larm, Espetveit, J. Meyer, P. Killmer, Borgen, Williams, Hurtig, P. Foss, Herman, Christiansen. *Tenth Row:* Overby, Leitz, Hellbaum, Jorgenson, Bartanen, Aune, Wildemoe, Sperstad, Dewing, D. Johnson, King, P. Anderson, McAllister, Lea. *Eleventh Row:* Bramer, Tollfeldt, Harshman, Stover, D. Steiro, Wellsandt, Densow, Doris Berg, Lindstedt, Hesla. *Twelfth Row:* P. Purvis, Davidson, Rusinko, Moeller, Roth, Gunderson, Bode, Lundgren, Walker, Deetz, H. Hanson, Tvedt, D. Meyer, Skoog, Sholseth.

Delta Phi Kappa

Delta Phi Kappa is an organization of dormitory girls, which each evening holds devotions to help unite the girls in Christian fellowship.

Selma Gunderson served as president, and working with her were Jean Harbeck, vice-president; Grace Rasmussen, secretary; Joyce Ruffcorn, treasurer; Beverly Wigen, social chairman; and Betty Close, fire chief. Carol Rose served as fire chief for the second semester. The class representatives were Brita Skoog, senior; Doris Berg, junior; Evangaline Ordahl, sophomore; and Lorraine Keller, freshman.

Thanksgiving, Christmas, and Spring banquets and the Homecoming Tea were sponsored by the Delta Phi Kappa. Decorating the school at Christmas and managing a food booth at the Saga Carnival were other projects of the DPK during the past school year.



VERN FINK
Business Manager

LAVONNE DENSOW
Advertising Manager

LEONARD STAATS
Circulation Manager



G. E. GULHAUGEN
Assistant Editor

HAROLD "SWEDE" CARLSON
Editor

Saga

With "Future" as a theme, Harold "Swede" Carlson as editor, and Grace Elaine Gulhaugen as assistant editor, the Saga staff had the essentials to begin work on this year's annual. The editorial staff included Anita Roth, senior editor; Jack Guyot, art editor; Paul Arlton, sports editor; Emily Sholseth, faculty and administration; Mahlon Read, photography editor; Beverly Wigen, women's editor; Pearl Espetveit, write-ups, and Edna Swartz, snapshots.

Business Manager Vern Fink spent a great deal of time making the expenditures and the receipts balance. Helping him were Vonnie Densow, advertising manager and Leonard Staats, sales manager. Others on the business staff included LaWanna Wellsandt, Lily Anderson, Stan Williamsen, Elaine Knutson, Delores Wallen, Delores Langset, Corinne Aune, and Lorraine Deetz.

Miss Anne Knudson advised the editorial staff, Miss Dora Berg was art adviser, and Mr. Stuen was adviser to the business staff.

EDITORIAL STAFF
Knutson, Anderson, Wellsandt

BUSINESS STAFF
Roth, Sholseth, Read, Espetveit.





ARLING GANO
Business Manager



MALCOM SOINE
Advertising Manager



BETTY BEIMAN
Co-editors, 1st Semester
RUTH JOHNSON



MARY JEAN BOWEN
Editor (2nd Semester)



GORDON BIRKLID
Associate Editor
(2nd Semester)

Mooring Mast

Students leaving their classes at noon every Friday have been finding a neat pile of *Mooring Masts* waiting in the hallway of Old Main. The "chow line" is strangely quiet as the scholars bury themselves in their school paper, now enlarged to a weekly paper of six columns.

During the first semester this year, Betty Reiman and Ruth Johnson served as co-editors, with Mary Jean Bowen and Dick Weathermon as associate editors. The versatile Dick also handled the post of sports editor and wrote the "Sports Slants" column. Hard-working Paul Arlton was copy editor and Telma Metzger handled the society department.

The business staff made only one change for the second semester: Henriette Fikse's job of circulation manager was taken over by Bonnie Heen. Arling Gano remained as business manager and Malcom Soine as advertising manager.

The staff of the *Mooring Mast* held a banquet at the end of the first semester to celebrate a successful first semester and to honor the retiring editorial staff.

Mary Jean Bowen was editor during the second semester, with Gordon Birkliid as associate editor. Bob Andrew took over the sports editor's position, Bob Ericson became feature editor, and John Doheny, copy editor. Telma Metzger continued as society editor.

A great deal of the news coverage during the school year was handled by the budding newspapermen of the Journalism class, under the instruction of Mr. Milton Nesvig, faculty adviser to the *Mooring Mast*.

EDITORIAL STAFF

Seated: Johnson, R. Johnson, Standing: Ericson, Birkliid, Rooney, Joan Bowen, Roth.

BUSINESS STAFF

Soine, Fikse, Ogren, Gano





Viking Club

First Row: Wallen, H. Berg, O. Steiro, L. Anderson, Wall, B. Keller, M. Anderson. *Second Row:* G. Gulhaugen, Ramstad, Langset, Deetz, Vinje, E. Haglund, D. Steiro, Torvend, Danielson, Eide, Beckman, Holle. *Third Row:* Ordahl, Davidson, Hovland, Esse, Larson, Skartland, Rev. Larson, Falk, Hetle, A. Heen, Christianson, Ogren. *Fourth Row:* Gusland, M. Haglund, Ause, Svare, Stuen, Hendrickson, M. Gulhaugen, Osterh. *Fifth Row:* Christensen, D. Haglund, M. Nygaard, R. Lunde, Antonson, Anderson, R. Johnson

The Viking Club is an organization of students who have a knowledge of one or more of the Scandinavian languages.

The activities for this year included a Christmas party, a booth at the Saga Carnival, Smorgasbord at King Oscar's in Seattle, and a cruise in the spring.

The officers were Howard Larson, president; Knute Ause, vice president; Orna Steiro, secretary; and Sig Skartland, treasurer. Mr. Stuen and Rev. Larson were the advisers for the club.

- PLC -

To understand and appreciate German culture was the main purpose stressed by the "Deutsches Verein." Through the music, lectures, and discussions held at the monthly meetings, the members gained a wide knowledge of the cultural and historical background of the German people.

German games, songs, and food highlighted the annual Christmas party. Hansel and Gretel's house, managed by the "Deutsches Verein," also helped to make the Saga Carnival a success.

Under the leadership of Mrs. Little, this club prospered well throughout the school year. Officers for the first semester were Ed Gamm, president; Leta Metzger, vice president; Marcia Etzel, secretary; Ernest Collard, treasurer; and Beth Gottwald, social secretary. Second semester officers were Eugene Ahrendt, president; Frank Swanberg, vice president; Oline Milbrath, secretary; Arnold Helgeson, treasurer; and Vonnice Densow, social secretary.

German Club

First Row: Etzel, Sanderson, Klippen, O. Milbrath, C. Rose. *Second Row:* B. Kilmner, Morgan, P. Foss, Oakland, Dunsow, Seaburg, Buchholz, Plunger, Schandler. *Third Row:* Roth, Espervert, Woldseth, Worley, Kreck, Brauner, Eldahl, Jeter, Jost, Nicolak, H. Erickson, Zier. *Fourth Row:* Zellmar, Wohlbeuter, Kruxberger, Simons, Ahrendt, Crumbrugh, Reiss, Collard, E. Hauge, Aakre. *Fifth Row:* Nieman, Christofferson, Moltzer, Berndt, A. Rosin, G. Rosin, L. Knutsen. *Sixth Row:* G. Dammel, Meyer, Fynhou, Northstein, Swanberg, urkovich, C. Allen, Rutz, A. Johnson, Braathud, Kroening, Riche, Fink, Little.



Spanish Club

Huber, J. Hewston, Arlton, N. Knutsen, Pedersen. *Second Row:* Mrs. Jordahl, E. Knutson, Rieke, Benson, Skoog, Claussen, H. Bowen, M. Bowen, B. Heen.



El Club Espanol, under the guidance of Mrs. Catherine Jordahl, was organized to give the advanced Spanish student an opportunity to use the language. The business meetings, programs, and games were all conducted by South American procedures. All those with the equivalent of a college semester of Spanish were invited to become part of the group.

The Club had a Pinata game booth at the Saga Carnival, and gave Mexican candy as prizes. In April, it sponsored an ice skating party.

Officers for the year were Bonnie Heen, president, and John Hewston, secretary-treasurer.

OTHER ORGANIZATIONS ON CAMPUS

ALPHA SIGMA LAMBDA

President, Knute Loiland; Vice-president, Ivar Eines; Secretary, Lavonne Densow; Treasurer, Phil Falk

LINNE SOCIETY

President, Carl Fynboe; Vice-president, Pete Peterson; Secretary-Treasurer, Waldo Elefson.

SCIENCE CLUB

President, Jess Bumgardner; Vice-president, LeRoy Strenge; Secretary-treasurer, Gene Strandness.

FRENCH CLUB

President, Ralph Haugen; Vice-president, Jackie Stephenson; Secretary-treasurer, Kathryn Herman.

CAMERA CLUB

President, Swede Carlson; Vice-president, Arnold Helgeson; Secretary, Beverly Busch; Treasurer, Norman Cromarty.

VETERANS' CLUB

President, Eldon Kyllö; Vice-president, Gary Dammel; Secretary, Gladys Hovland; Treasurer, Swede Carlson.



First Row: Williamsen, Eckler, Stover, Klett, Gasaway, Landahl, Robinson, Carlson. Second Row: Rygg, Rusinko, J. Roalkvam, Busch, Nyland, Muckey, E. Roalkvam, Miller. Third Row: Lindstedt, McAllister, Benjaminson, Freese, N. Knutsen, Melgard, Soiland, Ramstad, H. Hanson, Kylo. Fourth Row: Doris Berg, Lea, D. Steiro, Pitzler, Valentine, Meyer, Borgen. Fifth Row: Whitley, McLean, I. Larson, Brynestad, Casavant, Harbeck, Larm, Jeter. Sixth Row: Haglund, Heen, McLaren, L. Anderson, Halvorson, Martinson, Read. Seventh Row: Hall, H. Larson, Foss, Wall Faaren, Siqueland, Antonson, Rembosky, White, Nothstein. Eighth Row: Soderlund, Christiansen, Tobiason, Albertson, Olson, Reetz, Henricksen.

Ski Club

This year the Ski Club began with one hundred and fifty members. They elected John Roalkvam as president; Wes Nyland, vice-president; Jean Harbeck, secretary; June Rygg, treasurer; and Beverly Busch, assistant treasurer. Mr. O. J. Stuen and Miss Clara Chilson were the advisers. Thor Hendrickson was elected president for the second semester.

Several enjoyable weekend trips were made to Mt. Rainier. One was made to the Milwaukee Ski Bowl. The last big trip of the season was made to Paradise, Mt. Rainier, and was high-lighted by the crowning of Beverly Busch ski queen.

A ski team was also organized this year, which took part in several inter-collegiate meets. Members of the ski team were Fred Miller, Dave Olson, Varley Johnson, Thor Hendricksen, John Roalkvam, and Wes Nyland.

Roller Blades

The Roller Blades Skating Club was an organization which promoted interest in roller and ice skating among the students at Pacific Lutheran College. Membership was open to all students keenly interested in the sports, and the roster boasted approximately twenty-five members.

The officers for the year included Dick Colburn, president; Bonnie Heen, vice-president; Elaine Freese, secretary; Cliff Johnson, treasurer; Mr. Leraas, adviser.

The main activities of the club for the year were the sponsoring of a number of ice and roller skating parties. Another activity was the designing of an emblem which was given to every eligible member.

Loper, Gerstmann, J. Hewston, N. Knutsen, Read, Christensen, Colburn, Ause, Johnson, Pflueger, B. Heen, E. Knutson, Ordahl, Hovland, Martens, Freese, Larson, Brynestad.





Debate

First Row: Shennum, Crumbaugh, Carpy, Klapstein, Dingfield, Worley.

Second Row: Culbertson, Hauge, E. Hanson, Cromarty, Duncan, Bachner.

Under the coaching of Miss Clara Chilson, the debate teams had a very active year. The question for consideration in 1947-1948 collegiate debating was—Resolved, that a federal world government should be established.

Opening the season with a statewide contest at C. P. S., followed by two engagements here, P. L. C. debaters participated in a Pi Kappa Delta-sponsored tournament at the College of the Pacific. The main contest of the year was held at Linfield College, McMinnville, Oregon, on February 26, 27, and 28. Among the one hundred and fifty-three debate teams participating were five from P. L. C. The debaters from P. L. C. at this meet were Walt Dingfield, Walt Klapstein, Don Duncan, Larry Hauge, Frank Culbertson, Karl Bachner, Bob Crumbaugh, Walt Worley, Ed Hanson, Lou Shennum, and Norm Cromarty.

In the annual oratorical contest January 21 Virginia Isvick won first place, Ralph Haugen, second, and Ed Sandvig, third. Virginia Isvick and Ralph Haugen represented P. L. C. at the oratorical contest at Linfield College, where Virginia won second place honors in the Women's oratorical contest.

At the speech tourney held at the College of the Pacific Donald Duncan placed fourth in the final contest for extemporaneous speaking.

With the end of this school year, PLC will have established a chapter of Pi Kappa Delta, the national speech fraternity, on this campus.

Another active group on the campus was the one participating in the Youth Forum of the Air over KTBI. P. L. C. students led the discussions about once every three weeks. The programs were sponsored by the Tacoma Council of Churches.

Cromarty, Zier, Haugen, Sandvig, Worley;
Isvick

Oratory





Alpha Psi Omega

Fink, Hellbaum, Miss Chilson, P. Purvis, Read, Kunschak, Haugen, Hillman.

The Theta Pi cast, PLC's chapter of the national dramatic fraternity, Alpha Psi Omega, had an active and eventful year. The club's activities began in October with the initiation of new members at a semi-formal ceremony at the Women's Club House in Tacoma, preceded by a dinner at Crawford's.

On November 19, Alpha Psi presented their annual "Theater Night." The program included three student-directed one-act plays, "The Necklace Is Mine," "Dress Reversal," and "Midnight Fantasy." In the spring Alpha Psi members took an active part in the production of the all-school play, "You Can't Take It With You."

Officers for the year were Patti Purvis and Ralph Haugen, co-cast directors; Vern Fink, stage manager; and Ross Bischoff, business manager.

An unusually large number of dramatic aspirants greeted Miss Clara Chilson at the first meeting of the Drama Club. Robert Crumbaugh was elected president; Larry Hauge, vice president; Joe Hill, treasurer; and Helen Ramstad, secretary. With the new name, "Curtain Call Club," the members enthusiastically began their dramatic activities. They assisted the Alpha Psi in the Theater Nite productions and "You Can't Take It With You." The Curtain Call Club was amply represented in the production and acting staffs.

CURTAIN CALL CLUB

First Row: Miss Chilson, Torvend, Gibson, Wallace, Espetveit, Ramstad, Densow, Deetz, Johnson, Sperstad, Busching, Christiansen, Stephenson, G. Purvis. *Second Row:* Soine, Crumbaugh, Plueger, Hauge, Worley, Reitz, Kreick, Brekke, Huntsinger.





"THE NECKLACE IS MINE"
 First Row: G. Purvis, Busching
 Second Row: P. Purvis, Espetveit, Gibson



"DRESS REVERSAL"
 First Row: Fink, Brekke, McDonnell
 Second Row: Plueger, Hauge, Svare



"MIDNIGHT FANTASY"
 Densow, Hellbaum, Ramstad

"Theater Night," presented by Alpha Psi Omega on November 19, was the first dramatic production given in the new Student Union Building. The program featured three one-act plays, "Dress Reversal" by John Gerber, "The Necklace is Mine" by Agnes E. Peterson, and "A Midnight Fantasy" by Katherine E. Hunt.

The cast of "Dress Reversal" included Dick Svare, Les McDonnell, Joe Hill, Douglas Brekke, Aaron Plueger, Larry Hauge, Walt Worley, Gerald "Doc" Larsen, and Malcolm Soine. Vern Fink was student director for this play.

Under student director Eleanor Hellbaum, Helen Ramstad and Bonnie Densow portrayed the colonial belle and the modern girl in "A Midnight Fantasy."

The students who dramatized "The Necklace Is Mine" were Geneve Purvis, Fritzie Busching, Pearl Espetveit, Judy Gibson, and Olga Torvend. Patricia Purvis was student director.

Comedy and laughs reigned March 5, 6, and 8 when P. L. C. presented Moss Hart and George S. Kaufman's "You Can't Take It With You," directed by Miss Clara Chilson.

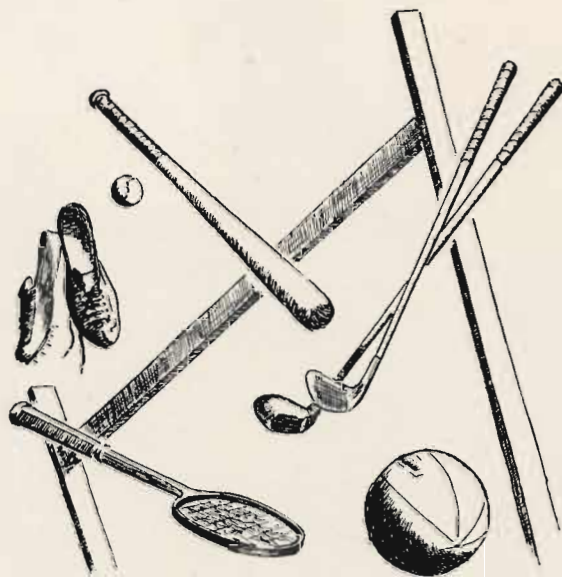
The play centered around Grampa Vanderhof, expertly characterized by Ralph Haugen, and his daughter, Penelope Sycamore, equally well executed by Marcella Burdick. Penny's husband, Paul, was played by Bob Erickson. Hetty Fikse assumed the role of their daughter, Alice, who fell in love with the boss' son, Tony Kirby, played by Norm Cromarty. Essie, an untalented ballet dancer, was enacted by Pearl Espetveit and her Russian ballet teacher, Boris Kalenkov, was Walt Kunschak. Stan Elberson portrayed Essie's xylophonist husband and Mahlon Reed played the role of little Mr. De Pinna. Olga Katrina, a Russian ex-Grand Dutchess, was enacted by Anita Roth. Mr. and Mrs. Kirby, Tony's sophisticated parents, were portrayed by Vern Fink and Geneve Purvis. The roles of Donald and Rheba, the colored handy man and his wife, were taken by Phil Falk and Vonnie Densow. Karl Bachner was the Internal Revenue investigator and Aaron Plueger, Bob Brass, and Doug Brekke completed the cast as three rough individuals who enforce the law.

Committee chairmen were as follows: student assistants, Pat Purvis and Malcolm Soine; stage manager, Walt Worley; house manager, Cliff Ewing; properties, Gladys Lea; make-up, Eleanor Hellbaum; wardrobe, Phyllis Anderson and Jeannie McAllister; business, Stan Williamson; advertising, Aaron Plueger; lighting, Bob Grumbaugh.



"You can't take it with you"







1947-48 established itself as a year to remember in the annals of PLC sports. From the opening kickoff against St. Olaf in September to the final inning against St. Martin's in May, success was a key word in the Lutheran ledger. By Saga press time, the Gladiators had already snatched a couple of conference championships and were striving for more. And while they were at it, the Lutes also picked up a Totem Pole, some impressive Little All-America honors, some scoring records . . . but wait; let's start at the beginning.

Our Coaches . . .



CLIFFORD OLSON
Athletic Director



MARV HARSHMAN
*Basketball
Track*



MARV TOMMERVIK
*Football
Baseball*

Behind championship teams there are always championship coaches. Pacific Lutheran has two of the best in the business. The two "Marvelous Marvs"—Harshman and Tommervik, took over the coaching reins in 1947 when Cliff Olson, virtually the one-man coaching staff at PLC for 19 years, stepped into the post of athletic director. Olson then announced at year's end that he was leaving athletics to enter business.

To Olson go the honors for the colleges' enviable sports record of the past decade. Football, for example, had been played at PLC for only three years prior to his arrival in 1929. At that time, the Glads were playing high school elevens and often losing to them. Only ten years later, they were playing and beating the best college grid outfits in the Northwest.

Having a large role in this development were Olson's star understudies, Tommervik and Harshman. Surrendering the mentoring duties to the two Marvs had been Olson's dream ever since the phenomenal pair graduated in 1941 after four years of stellar performance. This wish was consummated this past year.

As the Marvs took up their work, they had at their disposal a wonderful athletic plant—a brand new gym, a track, football gridiron, baseball, tennis courts, and a golf course—all built up under the supervision of Cliff Olson.

Football . . .



Bottoms Up
 Our Marvs
 Before St. Olaf Kickoff
 Mac Plows Ahead
 Lull Before the Storm
 On the Parkland Pebbles
 Johnson Drags Lumberjacks
 Charge Against Cheney
 Through Mud and Muck
 Mac Stops End-Zone Pass





Bob Andrew
End

Doane Blair
Halfback

Bob Brass
Center

Jack Bratlie
Quarterback

Jack Carbone
Guard

Don D'Andrea
Center

Rick Daniels
Guard

Bob Dinsmore
End

Elwood Furseth
Guard

Steiner Gorud
Center

Jack Guyot
Fullback

Roy Hagen
Guard

Ben Hanson
End

Bud Hatley
End

Burton Johnston
Halfback

John Jurkovich
Fullback

Ted Kauth
Quarterback

Lowell Knutson
Halfback

Eldon Kylo
Tackle

Blaine McKanna
Halfback



Harold Malnes
Halfback

Dick Mason
End

John Olson
Guard

Jack Ostrander
End

Elmer Peterson
Guard

Jack Proud
Tackle

Paul Reiman
End

Dwayne Rose
Halfback

Harold Schrupp
End

Norm Sturm
Fullback

Dick Weathermon
Tackle

Gene Strandness
Halfback

GLADIATOR GRIDIRON SCOREBOARD

PLC	14	St. Olaf	0	PLC	0	Lewis & Clark	0
PLC	19	Puget Sound	0	PLC	26	Central Wash.	2
PLC	35	St. Martin's	0	PLC	27	Whitworth	12
PLC	7	Eastern Wash.	7	PLC	27	Southern Ore.	21
PLC	6	Western Wash.	0				



Our First Six Points
 Watch Out, Jack
 Rose Among the Thorns
 To the Showers
 Our Goal-Line Plunge
 Completed Pass Play
 Kickoff Confab
 The Four Horsemen
 Gladiator vs. Savages
 The Fife Rifle





First Row: Gorud, Johnston, Fallstrom, Hatley, Brock, Andrew, Blair, Strandness, Knutson, Sturm, Rose, Bratlie, Streng, Peterson. Second Row: Ostrander, Guyot, Weathermon, D'Andrea, Cromarty, Korsboen, Proud, Carbone, Ponton, Corcoran, Kauth, Kylo, Schrupp, Skibo, Malnes, Elbersen, Lee, Wika, Anker. Third Row: Harshman, Tommervick, Pavia, Berentson, Griffith, Brass, Gasaway, Breco, Whitney, Daniels, Pollen, Berge, Hudson, Dinsmore, Dorothy, Reid, Hewston, Furseth, Hornby, Wagner, Lund, Boreson, Pitzler, Justice, White, Berry, Kerns, Erickson, Davis, Falk, Roalkvam.

From Northfield, Minnesota, to Medford, Oregon, opponents of the PLC gridiron machine were agreed: "Those Gladiators are great!"

Usually the story of a football team is a record of victories, defeats, and ties. In this case, there were no defeats, just seven victories and two ties. By season's end, after PLC had run over the best the states of Washington and Oregon had to offer, the Glads were recognized as the top college pigskin aggregation in the Northwest.

First to fall were the St. Olaf Lions, who trekked all the way from Minnesota, only to stumble 14-0 before a devastating Lute ground attack. But "wait til next year!" was the Ole sentiment.

The following Saturday, the Parklanders tangled with the Puget Sound Loggers and emerged with not only a 19-0 decision, but also the intra-urban championship with its accompanying prize, the Young Men's Business Club Totem Pole trophy.

In their first conference test, the Luthers triumphed 35-0 over the Rangers from St. Martins. However, the Gladiators received the first blemish on their record when the Savages at Cheney managed to put over a last-minute touchdown, and the game ended in a 7-7 deadlock. By tying this crucial contest, Eastern Washington ultimately became Winco co-titlists with PLC.

The heralded Homecoming tilt against Western's Vikings turned out to be a first class aquacade. The Gladiators proved to be better "navigators" than the Vikes and splashed to a 6-0 victory.

The Lutes just couldn't get their offensive moving against a surprisingly stubborn eleven from Lewis & Clark College in Portland, and the outcome was an unexpected 0-0. But in their next battle, the Norsemen redeemed themselves by downing the defending league champion Wildcats 26-2 in the Central Washington Homecoming feature.

Vern Tucker of Whitworth gave the Parklanders a look at one of the best one-man football teams in the area, but one man wasn't enough for the pugnacious Pirates; PLC won 27-12, completing their Winco slate.

The Thanksgiving Day tussle with Southern Oregon's roaring Red Raiders, however, was the climax of the season. The Marv-men had already stowed away their grid gear when the Pear Bowl committee phoned, inviting them to play in the post-season classic to determine the mythical Northwest minor college pigskin championship. The jet-propelled Gladiators zoomed from behind with a precision-perfect offense to defeat the Far West co-champs 27-21.

In vanishing seven potent foes and being tied by two others, their merciless Scandinavians racked up 161 points to their opponents' 42. Their offensive netted 1911 yards on the ground and 671 yards in the air, the equivalent to more than 25 gridirons laid end to end. Furthermore, PLC's defensive record was one of the best in the nation.

With 48 points, Jack Guyot led the loop scoring parade. In the Lute yardage department he was also first, followed by Frankie Spear and Blaine McKanna. However, it was two men on the line who received the most plaudits. Center Don D'Andrea was elected to the coveted Associated Press Little America first team, and Tackle Eldon Kylo received honorable mention.



Cheer Leaders — Pflueger, Christiansen, Haglund

*Co-Captains
D'Andrea, Peterson*

*Inspirational Award
Kyllo*

*Managers
Larson, Kearns, Anderson*



Basketball . . .



At State Finals
 Whitworth Tussle
 Hoop a la Hawaii
 Basketball via Radio
 Harsh's Herd
 Tip-off; PLC - CWCE
 Loose Ball
 Statisticians
 Interest from the Bench
 McLaughlin Hook-shot





Lundgaard



Saxton



W. McLaughlin



Kauth



Tyo



H. McLaughlin



Schafer



Jurkovich



Willis



Turman



Gamm



Mills



First Row: Harshman, Schafer, W. McLaughlin, Tyo. Second Row: Saxton, Lundgaard, Kauth, Jurkovich, Mills, H. McLaughlin, Turman, Gamm, Willis.

The story of the 1947-48 PLC basketball quintet is the story of a team that suddenly caught fire in mid-season, blazed its way to the league crown, and played in a post-season encounter to decide the state collegiate championship.

The Gladiators came to life with the New Year, after having dropped nine out of twelve non-conference contests. It wasn't that the Luthers were exceptionally poor—it was that the opponents were exceptionally good. During December the PLC hoopsters had faced such outfits as the Universities of Washington, Montana, and British Columbia, Washington State College, and Portland University. The three wins were registered at the expense of Portland (43-27), Montana (51-47), and British Columbia (40-39). Several of the losses were due to the Glads' "second-half jitters," in which the foes sneaked past the weary Lutes in the waning moments of the game.

Then Pacific Lutheran established itself high atop the Winco ladder by annexing nine consecutive frays. It was during this torrid period, also, that Harry McLaughlin amassed many of his season's 502 counters—he was putting along at 23 points per game. Eastern Wash., Whitworth, Western Wash., St. Martin's, and Central Wash., were subdued in that order.

The Parklanders seemed to be especially unstoppable on their home floor; they didn't lose a single league tilt on the Memorial Gym maples. In non-league competition, the Harsh-men dropped only three home games—two of them by two points. Unfortunately, the Glads had to play 19 of their contests on "foreign" courts in comparison to 13 on the local hardwoods.



Managers
Gassaway, Anderson



Inspirational Award and Honorary Captain
H. McLaughlin



Trainer
Harrell

Lute Hoop Scoreboard

PLC 32	Longview All-Stars	33	PLC 58	College of Puget Sound	43
PLC 36	Univ. of Washington	61	PLC 58	Western Washington	49
PLC 47	Univ. of Montana	68	PLC 65	Western Washington	40
PLC 51	Univ. of Montana	47	PLC 51	Central Washington	49
PLC 34	Washington State	67	PLC 47	St. Martin's	45
PLC 44	Washington State	50	PLC 48	College of Puget Sound	50
PLC 38	College of Puget Sound	45	PLC 47	St. Martin's	39
PLC 45	Central Washington	55	PLC 35	College of Puget Sound	51
PLC 43	Portland University	27	PLC 40	Central Washington	61
PLC 39	British Columbia	49	PLC 66	Central Washington	42
PLC 40	British Columbia	39	PLC 43	St. Martin's	41
PLC 47	British Columbia	49	PLC 74	Whitworth	55
PLC 52	Eastern Washington	49	PLC 45	Whitworth	50
PLC 47	Eastern Washington	33	PLC 43	Eastern Washington	60
PLC 73	Whitworth	46	PLC 65	University of Hawaii	54
PLC 55	Western Washington	44	PLC 29	Gonzaga University	53

Central's Wildcats were the first aggregation able to stop the Lutherans' victory rampage in Winco action. But the Lutes came back the following night and beat the Cats by 24 points. Later, the Norsemen also lost their last pair of conference tiffs, to Whitworth and Eastern, but they had already clinched the pennant.

The Gladiators' record wasn't quite as impressive in the hotly-contested cross-city race. CPS fielded the best basketball team in the institutions history, and won the Northwest Conference title running away. The locals managed to take only one of the four-fray series from the Loggers, but that doesn't tell half the story. In two of the other battles, the Lutes had ten-point margins at halftime, and in the fourth, were behind one point at the half. Fans who jammed the gymnasiums to see the two rivals fight it out really saw some exciting basketball.

To determine Washington's representative in the Kansas City hoop tourney, a post-season duel was arranged between PLC and Gonzaga, the state's top independent. In a frenzy of "hoop hysteria," nearly half a thousand Lute rooters swarmed in to Cheney. But cheers weren't enough; the Glads found out the hard way that the Zags were the third best defensive club in the nation. The Norsemen ended up on the humble end of a 53-29 count.

But only one Gladiator, "Fuzzy" Willis, was lost by graduation. The first string remained intact; the McLaughlins were only sophomores, and gene Lundgaard and John Jurkovich were only freshmen. So PLC prognosticators were looking forward to future campaigns with more optimism than ever.

Frosh Basketball . . .

Although it enjoyed only a .500 per cent season, the freshman basketball squad made a good showing and helped develop some players that may invade the varsity lineup in future years. The yearlings played most of their games in the tough City circuit that boasted such teams as 38th Street, which represented Western Washington in the national AAU tourney, and McChord Field, which placed second in the national Air Force cage final's.

Many of the melees which the Gladiator frosh dropped were by the narrowest of margins; they were eliminated from the county AAU playoffs by a tally of 46 to 45, by the Moose Lodge, composed, incidentally, mainly of ex-PLCites.

Lowell Knutson and Don Sullivan were among the top ten scorers in the loop. In non-conference activity, the freshmen's average was very good, excepting a loss to the Alumni All-Stars in the grad reunion feature. Paul Pollilo took over the helm when Marv Tommervik had an upright piano tumble on his leg and was hospitalized.

First Row: M. Cheesman, Blegen, Tobiason. *Second Row:* D. Sullivan, Knutson, Hunskor, C. Cheesman, Gasaway.



Track . . .



Front Row: Anchor, Hendrickson, Malnes, Bennett, Sarvela, Loper, Schaffer, Gamm, Cook. *Back Row:* Coach Olsen, Mgr. Anderson, Erickson, Schrupp, Mason, Lund, Knutson, Shull, Hoffman, Brunner, Nygaard, Andrews, Hefty, Borenson, Belland, Johnson, Brass, Coach Harshman.



1947 All-Winco Champ—440 yard dash

Del Schafer

Half-Miler

Lief Knutson

As this copy goes to the printers, the 1948 cinder season is past the half-way mark and sprinting down the last lap. Although the prospects looked dim at first, the Lute thinclads have shown other college trackmen that they are a tough, never-say-uncle outfit that has a lot on the baton.

To start off the campaign, the Gladiators collided with the touted Puget Sound Lumberjacks. It was a nip-and-tuck affair until the next to the last event, when the North-enders copped first and second places in the broad jump, and triumphed by a narrow $67\frac{1}{2}$ to $63\frac{1}{2}$.

The following weekends, PLC met Central Washington and St. Martin's. In the first, the Luthers came from behind to vanquish the Ellensburgers $68\frac{1}{2}$ to $62\frac{1}{2}$. The mile relay was the deciding factor for the Glads. The locals made their Winco Western Division debut under a steady downpour. Nevertheless, the Norsemen annexed first place in every event and piled up 100 1-3 points to the outclassed Martians' 20 1-3.

Next the Harsh-men participated in the annual St. Martin's Relays in Olympia of which they were defending champs. Other encounters against Western Washington and other colleges followed, but the highlight of the season came May 28-29, when the Lutherans were host to the big six-way Winco track finals. The Glads hoped to improve over the fourth place which they gained at the 1947 meet at Ellensburg.



FIELD EVENTS

Front Row: Erickson, Boreson, Lund. Back Row: Coach Olsen, Gamm, Schrupp, Shull, Brass.



DISTANCE RUNNERS

Hefty, Brunner, Bennett, Hoffman, Sarvela, Nygaard, Loper.

At mid-season, the most consistent point-winners for PLC included quarter-miler Del Schafer, half-miler Leif Knutson, miler Martin Nygaard, and two-miler Lewis Loper. Other good bets were Harold Anker and Everett Cook in the sprints, Robert Belland and Alvin Hendrickson in the hurdles, Bob Brass in the shot, Grant Huffman in the javelin, Norm Sturm in the discus, Jim Nylander in the broad jump, and Harry McLaughlin in the high jump.

Sprints

Hendrickson, Cook, Anchor

Hurdle

Belland, Andrews, Malness

Middle Distance

Gamm, Mason, Schafer

Two-Miler
Loper

Javelin
Hoffman

Shot Put
Brass

Pole Vault
Lund



Baseball . . .



Front Row: Snow, Skibo, Blair, Rose, Gunderson, Knutson, Morris, Turman. *Back Row:* Mgr. Davis, Rediske, Allan, Reiman, Bratlie, Sturm, Loete, Garner, Hatley, Saxton, Coach Tommervick.

With ten returning chenille-winners and a host of nephytes, Coach Marv Tommervick moulded a diamond nine that had captured seven wins out of a possible eight as this annual is being pounded out on the linotype. The only loss was an early season 6-7 verdict to Seattle College, last year's Winco baseball kingpins.

However, the Gladiators retaliated by taking three other tilts from the Chieftains by tallies of 8-2, 11-5, and 8-5, respectively. On April 14, the first Luther-Logger engagement turned out to be a "comedy of errors" on the part of CPS. The South-enders capitalized on them, collecting 14 runs to the Sounders' 4.

Next were a pair of doubleheaders against Central Washington. The Marv-men won the opener 10-0, with the second contest being called because of rain. Runs were a dime-a-dozen in the return twin bill played at Ellensburg. In the first, the Lutes scored 12 runs in the final two innings to edge CWCE

17-16. The Wildcats trailed all the way in the night cap, ending with a 4-10 loss to the Gladiator chuckers.

The Western Winco slate was inaugurated with a game against St. Martin's at Olympia. The evening game ended with a 5 to 2 score in our favor. The Parklanders were hopefully eyeing post-season East-West conference playoffs in which they could have a berth if they triumphed over St. Martin's and Western Washington in the Western division. Last season, the Glads shared second-place honors with Bellingham, while Seattle ran off with the crown.

The opening line-up, subject to change, was Merv Allen or Wes Saxton on the pitcher's mound, Chuck Loete at first, Jack Bratlie at second, Vern Morris at short, Wayne Brock at third, and in the outfield, Doane Blair, Jim Turman, and Dwayne Rose, with Carl Hatley or Paul Reiman as catcher. The Lutherans were hampered by the persistent rains and the lack of a diamond of their own, but developed into a potent ball club.

Infielders:

Morris, Bratlie, Loete,
Skibo, Snow, Gunderson.

Catchers:

Hatley and Reiman

Outfielders:

Turman, Rediske, Blair,
Rose.

Bratlie and Hatley

Pitchers:

Knutson, Garner, Sturm,
Saxton, Allan.

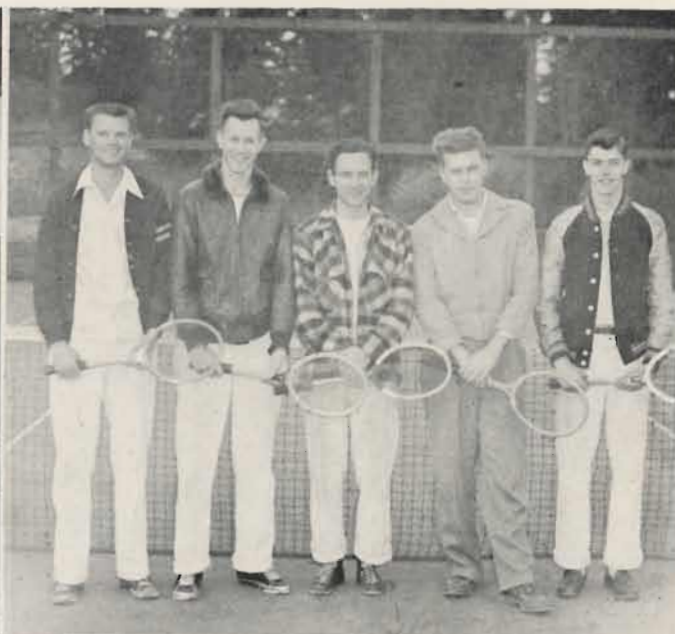
An important game



Golf and Tennis . . .



Dunn, McGough, J. Jaech, Gannon



Marvik, Gabrielson, Ause, Stewart, Hidlend

The two spring "minor" sports, tennis and golf, were just starting to gain momentum at deadline time for this book. Many of the scores up to this point had been "in the red" for the Luthers, but the Glads were improving fast.

On April 23, the netmen carded their initial victory, a 4-3 win over Central Washington's tennis squad. Earlier scores included 4-1, CPS; 3-3, Seattle; and 6-1, Central. The first two tiffs were cut short by rain squalls. The squad, mentored by Milton Nesvig, included Veterans Knut Ause, Erling Marvik, Charles Stewart, and Lou Gabrielson, plus several promising newcomers.

Playing a schedule almost identical with the racquet-swingers, the Lute divot-diggers were also having trouble finding their way into the victory column. The Gladiator golfers bowed to the powerful CPS Loggers, the Central Wildcats, and the Seattle Chiefs who last spring edged out the Lutes for first place in the Winco links tourney. All on the squad were felt-winners except Willie McLaughlin. After 19 great years at PLC, Cliff Olson announced his resignation, and the divot team became the last group which he coached.

Intramural . . .



Kyllo, Bratlie, Hatley, Rose, Loete, Pollilo.

Sometimes almost capturing the spotlight from the varsity activity, intramural sports at PLC during the year centered around basketball and baseball.

In both sports, action was divided into two leagues with playoffs after the regular seasons. The sixteen teams in the intramural hoop war were narrowed down to eight for the playoffs, the top four from each loop. After a series of torrid tiffs, all but two clubs, the Meatpackers and the Boilermakers, were eliminated. The Packers trounced the Boilermakers 49-45 in the championship titanic and reigned supreme on the intramural maples.

With the advent of spring, 14 nines were entered in the horsehide chase, many of them holdovers from the cage series. Pre-season favorites included the Meatpackers who hoped to make it two in a row. The big bruisers were the defending diamond champs. The Misfits and Plumbers also had their eye on the bacon.

Softball commissioner was Walt Hazen, while Gene Strandness was boss of the hoop whopee.

W. A. A. . . .

WAA is composed of all the girls interested in sports and the betterment of women's athletics at PLC. It is a very active group on our campus. The goal of the Association is to foster good health, sportsmanship and leadership.

This year the club was under the capable leadership of Dorothy Elefson, president. Assisting her were JoAnne Harshman, vice president; Peggy Ramberget, secretary; and Corrine Olson, treasurer. Mrs. Rhoda Young served as adviser.

Several very successful roller skating parties at Redondo were sponsored by the club. At the annual Saga Carnival the WAA sponsored a soft-drink bar.

Among the other highlights of the year were a six o'clock breakfast on the banks of Clover Creek one spring morning and a cruise on the Sound one spring evening, to round out the season.

Mrs. Rhoda Young



First Row: Davidson, Harshman, Elefson, Schwisow, Ramberget, Breum, Rygg, Freese, Martens, Etsel, B. Kilmer, Tollfeldt, Pflueger. *Second Row:* Bramer, Doris Berg, Cummings, P. Kilmer, King, Walker, Langset, C. Olsen, Dolores Berg, Beckman, Lea, P. Anderson, Larm, L. Anderson, I. Larson, Esse, Hagen, E. Haglund, Wellsandt, Gibson.





Blanche Kilmer
Tennis
Badminton



Doris Berg
Horseshoes
Horseback Riding



Myrtle Davidson
Baseball



Ruth Pflueger
Archery
Swimming

Judy Gibson
Bowling

Elaine Freese
Basketball

Lois Schwisow
Volleyball

June Rygg
Golfing
Hiking

Marjorie Esse
Roller Skating
Ice Skating

The sportsheads complete the executive board: Lois Schwisow, volleyball; Elaine Freese, basketball; Myrtle Davidson, baseball; Blanche Kilmer, tennis and badminton; Doris Berg, horseshoes and horseback riding; June Rygg, golfing and hiking; Judy Gibson, bowling; Ruth Pflueger, archery and swimming; Marjorie Esse, roller and ice skating.

Girls earning their first award are presented with a chenille letter, indicating they are letter-women of PLC. Second year award earners receive a pin; third and fourth year winners are presented with a chevron to add to the pin.

To receive an award the girl must earn 500 points. These are made by turning out for the three major sports—basketball, baseball, and volleyball—each giving 100 points. The individual sports each net 50 points. At the end of the year the points are totaled and turned in to the council to be recorded for issuing awards. An annual WAA party is held, at which the awards are presented and new officers installed.

In basketball and volleyball, elimination tournaments are held—these tournaments are marked with keen competition. The basketball season is highlighted by two all-star teams which are chosen from all the teams in the tournament.

Elfson, Harshman, Ramberget, C. Olsen.





First Row: Pflueger, Martens. Second Row: Bramer, Berg, Ramberget, Harshman, Hagen, Demers.

The basketball tournament in January was under the direction of Elaine Freese, sports-head. About 38 women turned out for this major sport and four teams were chosen. Anne Demers, Dolores Berg, Dot Elefson, and Peggy Ramberget were captains of these teams which had ladder playoffs. Dolores Berg's "Hamburgers" were the champions.

After the conclusion of the tournament, outstanding players in WAA were put on two All-Star teams with Dorothy Hagen and Pat Killmer as captains. The public, invited to the contest, watched a game in which Dorothy's team won, 30-10.

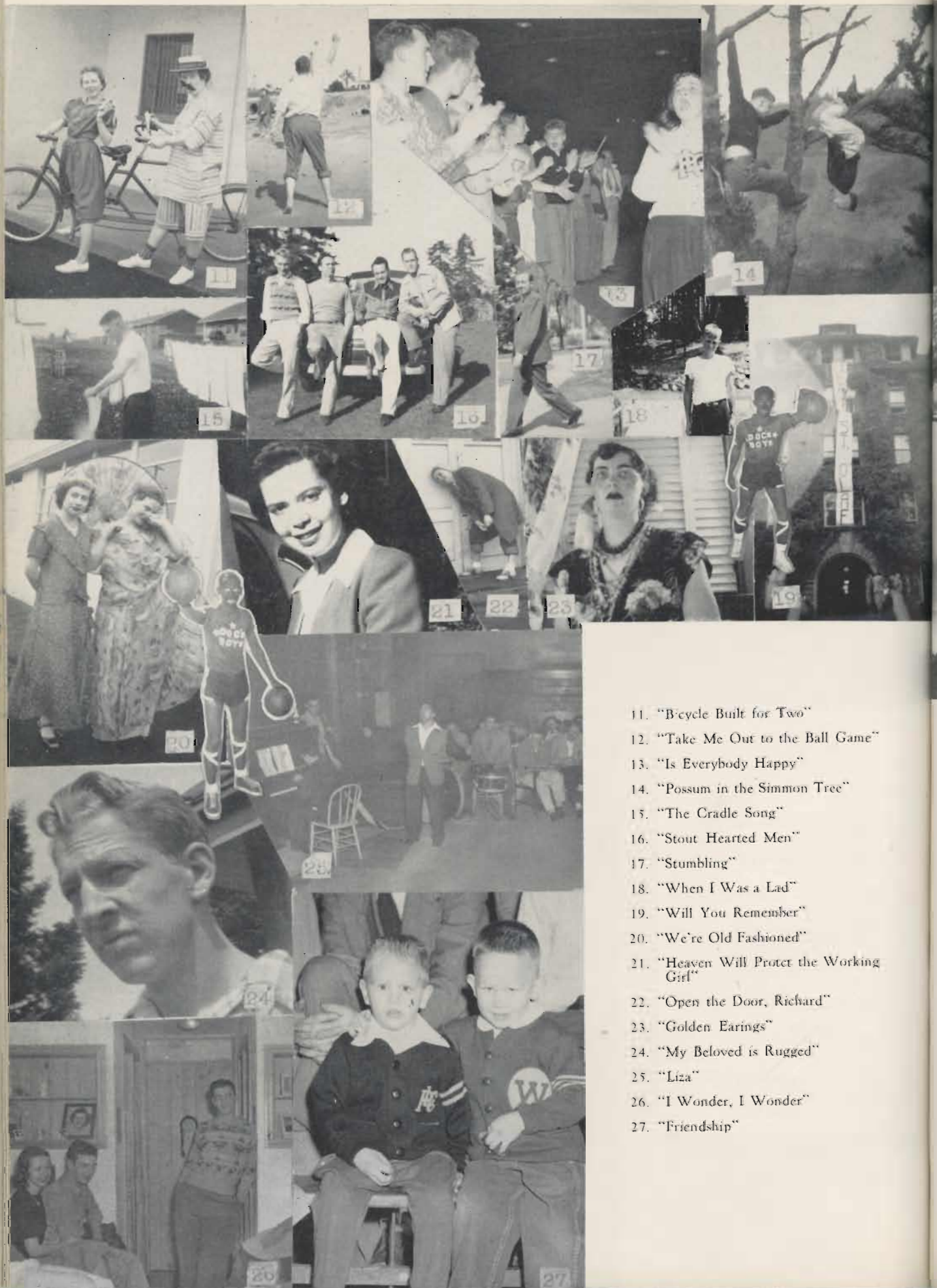
this 'n that



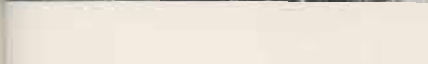




1. "Sleepy Time Gal"
2. "Horses Won't Bet on People"
3. "It Ain't Necessarily So"
4. "Got a Date With an Angel"
5. "The Lost Chord"
6. "Song of Norway"
7. "I Love a Parade"
8. "Mandy, Make up Your Mind"
9. "Say it With Music"
10. "Sophisticated Lady"



11. "Bicycle Built for Two"
12. "Take Me Out to the Ball Game"
13. "Is Everybody Happy"
14. "Possum in the Simmon Tree"
15. "The Cradle Song"
16. "Stout Hearted Men"
17. "Stumbling"
18. "When I Was a Lad"
19. "Will You Remember"
20. "We're Old Fashioned"
21. "Heaven Will Protect the Working Girl"
22. "Open the Door, Richard"
23. "Golden Earrings"
24. "My Beloved is Rugged"
25. "Liza"
26. "I Wonder, I Wonder"
27. "Friendship"



- 28. "Nobody Else But Me"
 - 29. "If Only I Had a Match"
 - 30. "The Mole"
 - 31. "Snowfall"
 - 32. "Ivy"
 - 33. "Among My Souvenirs"
 - 34. "Mountain Gal"
 - 35. "The World is Waiting for the Sunrise"
 - 36. "How Deep is the Ocean"
 - 37. "Coffee Time"
 - 38. "I'm My Own Grandpa"
 - 39. "When a Fellow Needs a Friend"
 - 40. "I'm the Loneliest Gal in Town"
 - 41. "The House I Lived In"
 - 42. "Spring is Here"
- The Little Black Sambos





MAY DAY

On May Day this year, Ardys Brevold was crowned queen of the festivities by Charles Bryant, president of the Young Men's Business Club in Tacoma. Her attendants were Anita Roth and Afton Hjelm, seniors; Doris Berg and Catherine Breum, juniors; Jean Hesla and Phyllis Brynestad, sophomores; and Dolores Berg and Doris Johnson, freshmen. The younger set included Dean Johnson, crown bearer; Judy Leraas and Margaret Ronning, flower girls; and Ann Marie Malmin, train bearer. Student Body President Walt Kunschak read the official May Day Proclamation announcing the holiday. The program included folk dances and musical selections.

After the coronation the queen and her court, together with the visiting high school girls, were guests of honor at a reception sponsored by AWS.



IN MEMORIUM

AMY LOU JOHNSEN

Junior at

Pacific Lutheran College

March 12, 1926 — April 27, 1948

I am the resurrection, and the life: he that believeth in me, though he die, yet shall he live.

JOHN 11:25

You'll Enjoy Shopping

at

Fisher's

. . . where quality merchandise and smiling, efficient courtesy are accepted factors. You'll appreciate, too, Fisher's attractive surroundings and the cheerful atmosphere that prevails throughout our six floors of conveniently arranged departments. You will find that our selections in all lines are the best obtainable . . . upholding Fisher's high standards of quality in every detail, assuring you of dollar for dollar value in everything you buy!

Your

TACOMA CITY LIGHT

PROVIDES

POWER FOR PAYROLLS

S
E
A
R
S

You . . .

WILL LIKE THE
FRIENDLY HOME
TACOMA BANK . .



HOME OFFICE

LINCOLN BRANCH

MEMBER FEDERAL DEPOSIT INSURANCE CORPORATION

GRADUATE

TO



Reach for
Jordan's



JORDAN BAKING COMPANY



Dependable Delivery

**FUEL OIL
SERVICE CO.**

MAIN 3171

816 A ST., TACOMA

PARKLAND LIGHT & WATER CO.

Garfield and C Streets

Phone GR. 8569

Parkland, Washington



TRUSTEES AND ADMINISTRATION FOR 1948

President

STANLEY ROSSO

Vice President

HERBERT SOCOLOFSKY

Secretary

IVER JOHNSON

Treasurers

O. J. STUEN

WM. H. CHAMBERS

Manager

MIKE WUTZ

Collector and Accountant

MRS. ESTHER DAVIS

Legal Advisor

The HON. JOHN McCUTCHEON

Auditor

FRANKLIN JOHNSON

Tacoma, Wash.



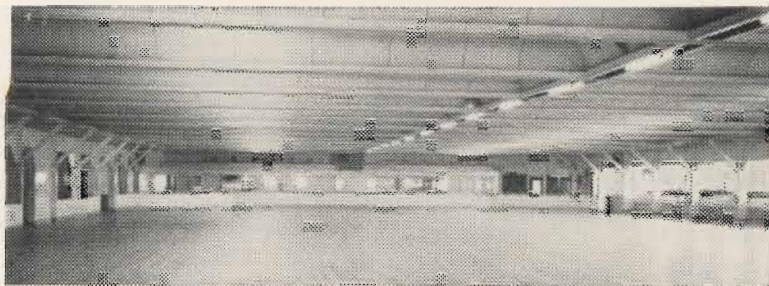
Parkland is not incorporated. By farsighted management the Parkland Light and Water Company has made Parkland the most progressive suburb of Tacoma.

Besides the usual functions of such company, we serve the community with street lights and with fire hydrants free of charge. Part of our own building is leased to the U. S. Government for a post office. We have served the P. L. C. and its students and faculty for 34 years.

The Parkland Light and Water Co. congratulates the Pacific Lutheran College on its progress and pledges its continuous efficient cooperation.

COMPLIMENTS OF . . .

REDONDO BEACH ROLLER ARENA



A Favorite Recreation Center of P. L. C.



For Skating Parties, Picnics, . . . Phone W. J. Betts
Des Moines J 916 or J 843

Oil Sales & Service, Inc.

MAIn 6137



FOR PROMPT DELIVERY OF MOBILHEAT STOVE,
DIESEL, AND HEAVY FUEL OILS, CALL MAIN 6137

J. GLYN SMITH, Pres.

764 COMMERCE ST.

TACOMA, WASHINGTON

ART'S SHOE SHOP

Shoe Repairing of All Kinds

PARKLAND

V. R. Selle

L. S. Rytkonen

CHEVRON

GAS STATION

Parkland Fuel Oil

and

Service Station

GRanite 8112

Parkland

**COLLEGE SERVICE
AND GARAGE**

E. Jorgensen

UNION OIL PRODUCTS

GRanite 8197

Parkland

GOOD LUCK

AND

MANY THANKS



DON KNAPP

PARKLAND GRILL

COLLEGE BARBERS



MARSH and KNUDTSON

GATES MARKET



Films Developed and Printed

24 - Hour Service



Parkland

Washington

Parkland Pharmacy

★
OPEN

9:00 a. m. to 9:00 p. m.

*Registered Pharmacist
on duty at all times*

Pacific Avenue and Airport
GRanite 8519 Tacoma
(Formerly Lundberg Drug)

*Congratulations
to the
Graduates of 1948*

Young's
GIFT SHOP

MOBLEY'S JEWELRY

Lasting Gifts of Quality

HERSCHEL E. MOBLEY

Phone GRanite 6445

328 Garfield Street

Parkland, Washington

RAYMOND ELECTRIC CO.

- Engineers
- Contractors

813 Pacific Ave.

Tacoma

SPRENGER & JONES
JEWELERS

*Watch and Jewelry Repairing
a Speciality*

1147 Broadway Tacoma 2, Wash.

With Compliments of . . .
PACIFIC LUTHERAN COLLEGE

Jensen's Barber Shop

*"In College you learn where
to find it . . . Books tell how!"*

C. FRED CHRISTENSEN
STATIONER

913 Pacific

Tacoma

IT PAYS TO PLAY

**DILL HOWELL
SPORTING GOODS**

929 Commerce

Tacoma 2

MAin 5665

ANDERS FLORIST

255 South 11th Street

Phone MAin 7113

TACOMA

A Living Gift is a Loving Gift

SMITH FLORAL CO.

L. E. RYNNING, *Owner*

Visit the Greenhouse

1716 South 56th St. Phone
Tacoma 8, Wash. GARland 1494

**UNITED MUTUAL
SAVINGS BANK**

Tacoma's Only Savings Bank

Washington Building

11th and Pacific

— MEMBERS —

FEDERAL DEPOSIT INSURANCE, CORP.

C. O. Lynn Co.

MORTUARY

717 Tacoma Ave. Phone MAin 7745

Tacoma, Washington

Headquarters for . . .

Quality Diamonds
Watches and Jewelry

in Tacoma Since 1889

MIEROW'S

1105 Broadway Opp. Fisher's

CASWELL OPTOMETRISTS

FOR BETTER GLASSES

★ ★ ★

766 9th at St. Helens

MAin 4748

***TACOMA'S BIG SPORTS
SHOP!**

- ★ Sporting Goods
- ★ Sports Clothes

For Men and Women

***Washington Sports Shop**

918-20 Pacific

BR. 1136

Mrs. Frisbies Bakery

★ ★ ★

710 So. 38th St.

GA. 7591

Gladiator Service Station

☆ Sunset Products

☆ Auto Repairing

J. E. Beckwith

Parkland

Lincoln Hardware

J. B. FEIST

3736 South G Street

Tacoma

GARland 1425

W. S. SCHILLING

JEWELER

Watch and Jewelry Repairing

765 So. 38th St. - Tacoma 8, Wash.

BLUE RUSTIC

Mr. and Mrs. Ray Simi



Parkland

Washington

TACOMA'S HEADQUARTERS FOR

CARPETS

VENETIAN BLINDS

LINOLEUM

APPLIANCES

DRAPERIES

UPHOLSTERING

WINDOW SHADES



1141 Broadway

Selden's
INC.

BR. 5131

JOHNSON AND ANDERSON

General Merchandise

"THE STORE THAT HAS IT"



On the Mountain Highway at Parkland, Washington

ESTABLISHED • 1878

PIONEER
INCORPORATED



PRINTERS • LITHOGRAPHERS • STATIONERS
MAIN 2122 • 12TH & A STREETS • TACOMA, WASHINGTON

David A. Ekberg

R. F. Engvall

**FRANK EKBERG
& CO.**

INSURANCE OF ALL KINDS

1101 Puget Sound Bank Bldg.

MAin 3356 Tacoma, Washington

Anderson Lumber Co.

M. W. ANDERSON, Prop.

PAINT AND HARDWARE

9643 Pacific Ave.

GRanite 7311

Tacoma, Wash.

Compliments of
LUNDQUIST - LILLY

D. & M. TYPEWRITER AND ADDING
MACHINE CO.
ROYAL PORTABLE TYPEWRITERS
Mita G and Volger Ribbons and Carbons
Service All Makes Machines
726½ St. Helens MAin 1474

PARKLAND CYCLE SHOP

*"Remember the place you rented
your bike"*

COMPLIMENTS OF
The BUNGALOW

**98th ST
HARDWARE
STORE**

DANIELS HARDWARE

GRanite 7947

★ ★ ★

Plumbing Supplies

Electrical Supplies

Paints

Sporting Goods

Fishing Licenses

Household Utensils

FURS CLEANED - STORED - REPAIRED - BONDED INSURANCE

**SUPERIOR SERVICE LAUNDRY
AND DRY CLEANERS**

Garland 4413

2011 So. Tacoma Way

THE STATIONERS, INC.



OFFICE AND SCHOOL EQUIPMENT AND SUPPLIES



926 Pacific Avenue

MAin 2153

927 Commerce St.

Young people with big fashion ideas
and little budgets like to
shop at —

Lou Johnson

755 Broadway
Tacoma Avenue near Division
Lakewood Center

SAVE SYSTEMATICALLY AT THIS FRIENDLY ASSOCIATION

**Tacoma Savings and Loan
Association**

BR. 8305

Tacoma, Washington

★ P H O T O E N G R A V I N G ★

★
H A L F - T O N E S



★
C O L O R P L A T E S

★ C O M M E R C I A L A R T ★

JOSEPH R. LOVELY
OWNER

907 $\frac{1}{2}$ Commerce St. MAin 6368 Tacoma, Wash.

CONGRATULATIONS

FROM

Geraldine

CHURCH DIRECTORY



CENTRAL LUTHERAN CHURCH MAin 6245

REV. ROY E. OLSEN
1001 South G Street

BETHEL LUTHERAN CHURCH Hillside 3820

REV. E. ARTHUR LARSON
South 54th and I Streets

FIRST LUTHERAN CHURCH BRoadway 1538

REV. CARL E. RYDELL
524 South I Street

MESSIAH LUTHERAN CHURCH BRoadway 4330

REV. O. L. JENSEN
1209 South I Street

TRINITY LUTHERAN CHURCH GRanite 8163

REV. E. B. STEEN
Parkland

ZION LUTHERAN CHURCH GARland 1229

REV. W. F. ANDERSON
South 59th and Thompson

LUTHER MEMORIAL CHURCH MAin 4536

REV. F. J. MOLTER
South 5th and I Streets

OUR SAVIOR'S LUTHERAN CHURCH . . . BRoadway 3649

REV. SANFORD O. SHAFLAND
South 17th and I Streets

BETHLEHEM LUTHERAN CHURCH MAin 5406

REV. BURTON W. SMITH
Harrison and East G. Streets

WITH CONGRATULATIONS TO
THE GRADUATING

CLASS OF

1948

☆☆☆

AND

BEST WISHES

TO ALL STUDENTS

OF

PACIFIC LUTHERAN COLLEGE

☆☆☆

SKOOG ENGINEERING CO.

Olympia, Wash.

FOR QUALITY PRINTING . . .
. . . Phone GRanite 7100

Wedding Announcements, Calling Cards,
Personal Stationery for College Students.
Also printers of Letterheads, Statements
Invoices, Business Cards, Ruled Forms,
Tickets, Posters, Dodgers, Programs,
Envelopes, Pamphlets, Books and Publi-
cations. We specialize in Service and
Design.

Craftsmen in the Printing Trade

Beard Printing Co.

P. O. Box 797

Parkland, Wash.

Compliments of

**THE
DONUT BAR**



Parkland

Washington

COMPLIMENTS

of

BUCKLEY-KING

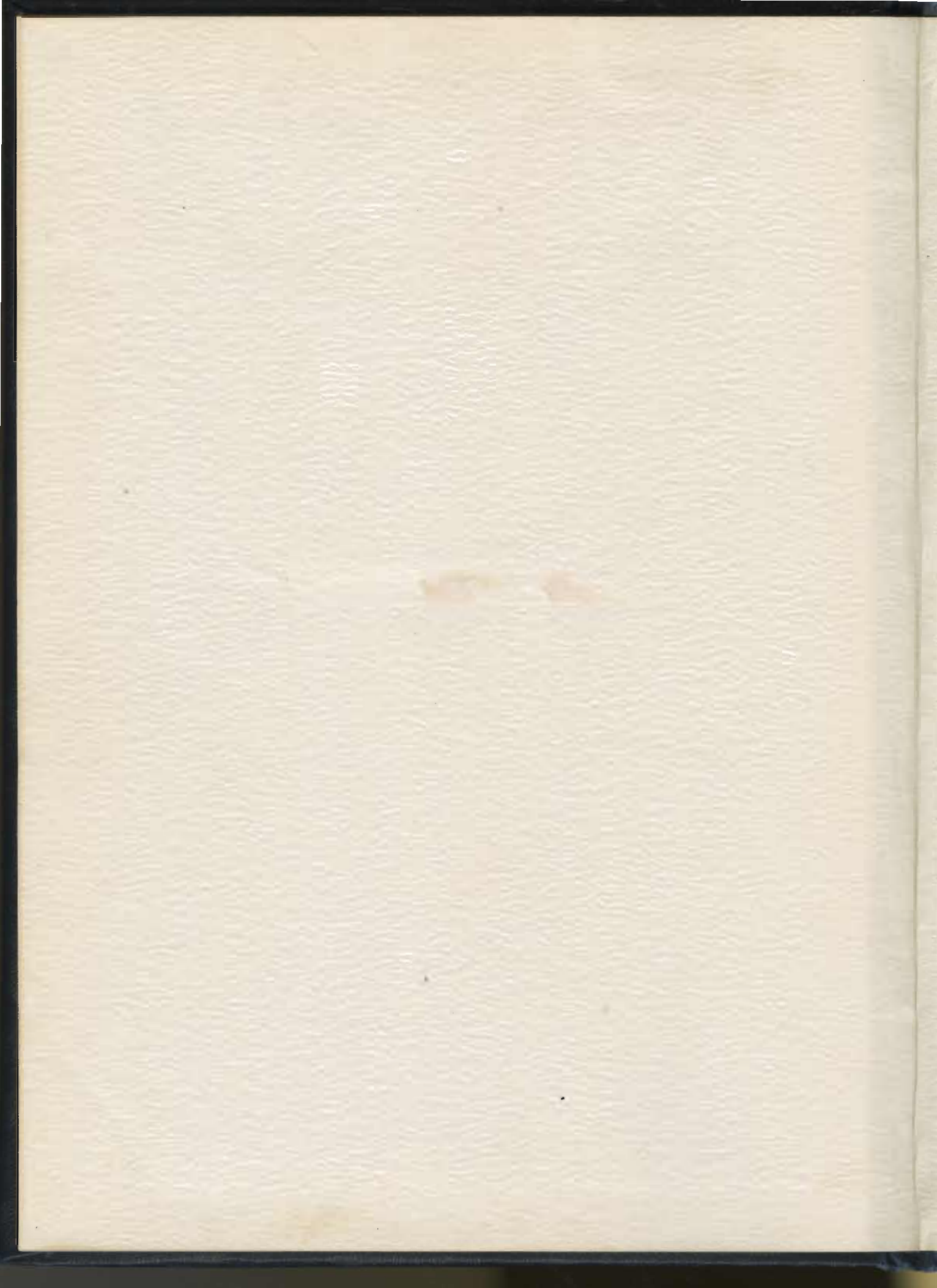
PATRONIZE YOUR ADVERTISERS

THANK YOU!

The staff of the 1948 SAGA wishes to thank all those who cooperated in making the editing and publishing of this yearbook possible. We hope that the reader of this book will find pleasure in browsing through its pages even in the years to come.



To Remember You . . .



R
378,797P
P115

C.1

37403

