

VOTING FOR SAGA ROYALTY TO BE HELD NEXT WED., MARCH 16

The Mooring Mast



VOLUME 32, NUMBER 19

PUBLISHED BY THE STUDENTS OF PACIFIC LUTHERAN COLLEGE

FRIDAY, MARCH 11, 1955

Mission Emphasis Week To Feature O. Rolander

Rev. O. R. Rolander, pastor of the Messiah Lutheran Church in Auburn, Washington, will be the Mission Emphasis speaker in chapel on Monday and Wednesday. His topics will be, "The Thrilling Task of a Missionary" and "New Era in Missions Today."

Pastor Rolander graduated from Gustavus Adolphus, St. Peter, Minnesota, with an A.B. degree in 1914. He graduated from the Augustana Seminary, Rock Island, Illinois, in 1911.

Rolander and his wife went to Africa in August, 1944, and worked there for four and a half years in an area of a new group of natives called the Turces, a tribe of 150,000 people, and here opened a new mission field.

In 1949 they came back to the States where Rev. Rolander took a graduate course at the University of Washington. He then taught Christianity and Missions at Gustavus Adolphus in the spring semester of 1950.

The Rolanders returned to Africa in the fall of 1950 where he served for three years as an educational missionary and the head master of the Kinampanda Teachers Training School.

Rev. and Mrs. Rolander moved again to America in June, 1953, for health reasons and took their family to Messiah Lutheran Church.

Mrs. Rolander graduated from the University of Washington in 1942 where she was an active participant in the LSA, being national secretary one year and the Pacific Northwest president for one year. She taught home economics one year before going to Africa. In Tanganyika she helped with the education of the women and children, taught sewing and knitting classes and family and child care.

The Rolanders have three children, Tom, 7, John, 5, and Ruth, 3.

Rogness, of Luther Seminary, Visits

Dr. Alvin Rogness, president of Luther Seminary at St. Paul, Minn., has been a visitor on the PLC campus Thursday and Friday of this week. His visit has been primarily to interview and speak to the school's pre-seminary students.

Besides the private interviews, Dr. Rogness spoke to the pre-sems in a special meeting at 7:00 p.m. Thursday evening. Other members of the student body were introduced to him when he spoke for evening devotions in both North and South Hall dormitories and in today's chapel period.

In a general statement to the pre-sems, Dr. Rogness reviewed the nation's history during this century in light of the spiritual attitudes of the people. He stated that previous to the first and second world wars the nation's people felt a self-sufficiency which led them to believe there would be no famines or wars in the future. "The theories of Darwin had influenced them to think that they had aspired upwards from the monkey and were well on the way to becoming angels."

Dr. Rogness said that after the world wars and the depression, faith in human competence disappeared. "Pews are now being filled with hungering and thirsting souls." According to him this situation presents the opportunity and responsibility of leadership to the present and future spiritual leaders of America. "You are being called at an auspicious time to minister to the explicit and implicit yearnings of the age," he said.

The position of the pre-sem students in relation to the campus was then presented and various questions were asked by the students.

After the meeting, he was asked what should the voice of the church be during these times. To this he replied that the church's special task is to call nations to a self

(Continued on Page Four)

Soprano Will Open Spring Festival

Jennie Tourel, dramatic soprano of the Metropolitan Opera Company, will open the fourth annual Drama-Music Festival. The festival will be May 5-8 and will be directed by Professors Karl E. Weiss and Theodore O. H. Karl. Miss Tourel has been hailed by critics as one of the greatest singers in the world today and Virgil Thomson in the New York Herald Tribune said, "unequaled among living singers."

The festival will also include two concerts by the Seattle Symphony Orchestra, under the direction of Milton Katims. The orchestra will be accompanied by an 150-voice student chorus. These concerts will be in the afternoon and evening of May 7.

On May 6 a stage and screen personality will appear with a student cast in a dramatic production. The festival will close with a worship service on May 8.

An exhibit of contemporary art, a science fair and a display of international books will be featured during the festival.



Saga Royalty candidates are: First row (left to right), Dana Blount, Bonnie Troedson, Cali Christensen, Betty Toepke, JoAnne Knudson, Janet Towe. Back row (left to right), Bud Lester, Jack Hoover, Ted Carlstrom, Iver Eliason, Brian Price, Vern Hanson. Balloting will be done next Wednesday.

Students Adopt New Constitution

Students of PLC have adopted the new ASPLC Constitution by a vote of 95.6 per cent. Voting took place in the lobby of Old Main Tuesday afternoon.

Some of the major changes in the Constitution were as follows:

1. The former name Associated Student Body, has been changed to ASPLC, Associated Students of Pacific Lutheran College.

2. One Tuesday of each month will be devoted to the official ASPLC meeting; all other Tuesdays will be under the jurisdiction of the Student Council.

3. A new system of nominations and elections was devised and adopted. This new system will be used in the coming spring elections.

The Student Council will begin this spring's election on March 23 when it posts its nominees for four offices. The maximum number nominated for each office will be three and the minimum two.

Nominating petitions signed by 5 per cent of ASPLC must be turned into the Student Council by March 29. The final list of nominations will be posted March 30.

Campaigning for ASPLC offices for the ensuing year will be conducted April 13-19.

Movie Tonight In Upper Student Union, 8 p.m.

"Chip Off the Old Block," starring Donald O'Connor and Anne Blythe, will be shown in the upper SUB tonight at 8 o'clock. Admission is 35 cents per person.

Following this movie all students are invited to a game night at South Hall.

This movie is sponsored by Mu Phi Epsilon.

Saga King, Queen To Be Crowned By KTAC Personality Next Friday Night

Saga Royalty candidates for the coming Saga Carnival, March 18-19, were recently announced by Walt Schwindt, director. This coming Wednesday members of the student body will elect two finalists from the six freshman women and the six senior men nominated last week. A final vote will be cast the following day. Announcement of the chosen King and Queen will not be made until the coronation, Friday at 8:00 p.m. in the CMS.

King and Queen candidates and their sponsors are as follows:

Dana Blount, of Seattle, by sophomore class; Cali Christiansen, of Everett, by the Lettermen; JoAnne Knudson, Arlington, by Blue Key; Betty Toepke, Fairfield, Wash., by Kappa Rho Kappa; Janet Towe, Seattle, by Ivy Hall; Bonnie Troedson, Denair, Calif., sponsored by A.P.O.

Ted Carlstrom, Antioch, Calif., nominated by the Junior class; Iver Eliason, Kennewick, by South Hall; Vern Hanson, Seattle, by Spurs; Jack Hoover, Parkland, by sophomore class; Bud Lester, Silverton, Oregon, by freshman class; Brian Price, Longview, by Old Main.

Bert McMurtrie, radio personality from KTAC, will crown the royalty and also act as MC.

Following the coronation a program starring "Tommy and Benny" of Portland will offer varieties in music, with instruments such as accordion and trumpet. "Besides being instrumentalists these two young men sing and should offer one of the best programs yet seen at a PLC Coronation ceremony," said Walt Schwindt, Saga business manager. They are returning from a tour of Washington and Oregon.

The annual Lettermen's Minstrel Show will take place Saturday eve-

ning in the CMS at 8:00 p.m. The Saga Carnival in the gymnasium will follow both evening programs. Booths will feature various entertainment. Liberal door prizes are promised, with drawing at the close of each evening.

The chairmen for the carnival booths are Glenda Simonson, Spurs, photos; Dwaine Brandt and Dale Storaasli, Lettermen, swing a croquet ball; Glenn Hill, Kang; Don Cornell and Carl Forsell, Clover Creek; Janet Turman and Esther Ellikson, Curtain Call, fun house; Howard Jeanblanc, APO, basketball and football; Dale Schimke, FTA, dart; Bob Sundberg, sophomores, baseball at bottles; Stu Morton and Elwood Rieke, Juniors, archery; Elwood Rieke, Linne, shuffleboard; Marlys Salterbeck and Doloris Beck, Viking Club, food; Jim Clifton, ACS, gun shot at old chem flasks; Bob Monson, Alpha Sigma Lambda, penny pitch; Glenn Johnson, Blue Key, electric wire; Marge Devan, White Caps, shoe shine; Delphine Danielson, Old Main, dart at faculty; Greta Johnson, AWS, sponge throw; Dave Jaech, freshman class, fish throw.

Spurs To Visit CPS

Spurs of PLC have accepted an invitation to be the guests of the CPS Spurs at a pot-luck dinner on the CPS campus. The girls plan to go some time in the near future, but a definite date has not been decided upon yet. The CPS Spurs are planning on a return visit.

Spur President Sylvia Kirkebo commented, "Those Spurs are really nice, even if they do go to CPS! They're really peppy!"

The Mooring Mast

Published every Friday during the school year by students of Pacific Lutheran College.

Office: Student Union Telephone Granite 8611
Subscription Price - \$3.00 per year



EDITOR-IN-CHIEF	JOAN KITTELSON
NEWS EDITOR	KATHERINE SANNERUD
NEWS STAFF—Lois Erekvam, Agne Hallanger, Barbara Gronke, Arlene Baker, Dave Enghund, Janet Svoren, Jim Lökken.	
FEATURE EDITOR	JOANNE POENCET
FEATURE STAFF—Beverly Sveningson, Phil Nordquist, Ted Carlstrom, Myrna Berg, Wally Lorton, Martha Douglas, Al Freed, Wildur Sackman.	
MAKE-UP EDITOR	DOROTHY JOHNSON
SPORTS EDITOR	WALT BALL
SPORTS STAFF—Loole Spry, Clyde Genz, Dan Rose, and Brian Price	
EXCHANGE EDITORS	BEVERLY PIERSON, SHIRLEY VEVANGE
AD MANAGER	PAUL LUCKY
BUSINESS MANAGER	RAY GOLD

Reminder From Old Main - - -

The tip that Old Main gave me last week about a "Tolo" that occurs in Spring was no false rumor. The committees are busy at work to make this coming tole the most impressive dinner date that the coeds of PLC have ever seen.

Girls, let your mind wander ahead and think about this wonderful night in April. Spring is here and the whole countryside is blooming forth with beautiful spring flowers. Today it is Friday, April 15, and the smiling, shining sun has just gone to bed in the west. In every room in Old Main there is a rush of excitement, for this is the night the girls have been waiting for. Tonight is the tole. Yes, all the weeks that have been spent preparing for this gala affair are over, and now only the event itself remains. Will this night of April 15 be your night? If so, bring your money for reservations to room 126. Get that dollar out and put it down on your reservation for the tole before March 15th.

Girls, how has your "boy scouting" gone? Which person of the other species do you have your hook baited for? All I can say is, "You had better start playing that fish and landing him now before he is caught by a better fisherwoman than you."

Oh, yes, the name of the tole: "....." Well, this will be continued next week!

The Ghost Rider

To the sadly neglected, poor and dejected, unaffiliated, little protected, sodden citizenry of Luteville, via the Mooring Mast of the same description:

You are the people who have been complaining about the quality of the news appearing in this weekly scandal sheet. You are the people who ask why we don't have some good reports on this job who will print the news you want to hear. Still, you are the crowd who gripes for all to hear if this miserable sheet is not on the post at the appointed time each Friday. You are the people for whom this paper is printed, and the staff wants to print the news that you want to hear, but how are they to know your wishes?

If just a few of you had the ambition to write down your gripes and submit them to the office from which this paper issues each week, perhaps the quality of it would be more pleasing to you. Why is it that you refuse to do this little thing? Perhaps you like to have something about which you can constantly complain. Perhaps you don't know just what it is that you do want? Perhaps you are just complaining for complainant's sake.

If you do know what you want, if your complaints are well founded, if you are not just talking to hear the wind whip against your teeth, then drop a note to the Mast, let them know what you want, for you have a right to expect it if the editors can be made aware of it. This is your paper, so get on the ball, will you?

This article, incidentally, was not solicited by the Mast. Your Ghost Rider is writing it only because he is fed up with hearing you gripe about this paper and doing nothing about it.

A Supercilious Sneer

Nordquist/Carlstrom

We presented some personal views about the scope, future, etc. of student government on the Luteville campus. We would be accomplishing nothing really if we just shouted loudly and pointed the proverbial finger at what we think are defects and inconsistencies. We probably should bring our soap boxes and engage in irrational oratory in the various populated areas of our campus. Soap box oratory, buttonholing and enraged, incoherent mumbling have no place on this campus as far as we're concerned, so we'll attempt to set down what we think in a somewhat scholarly fashion.

It is difficult to know where to begin; possibly the most logical area to touch first is finance, and its relation to "successful," healthy student government. It is inconceivable to see how any government could exist or accomplish very much on a limited budget. This is the handicap our government operates under, however. So it would follow if we wish to improve the status quo the budget must be enlarged appreciably and the scope of action broadened accordingly. Practically all areas of finance could be brought under the auspices of the student government. For example, the book store, coffee shop, etc.; such areas as these vitally affect the students. Why can't they have a voice in their operation?

Another area which vitally concerns the students is a rather broad, complex one relating to discipline, standards, rules to be followed, etc. We recognize that this area is much too extensive to even introduce in a few sentences. However, why can't a discipline committee with active student participation be set up. This committee could work out a logical coherent set of rules and standards and would interpret them in case of infractions by members of the student body. The advantages found in such a system are so obvious they really need no explanation. With regard to other rules (for example, dorm hours), some system could be introduced whereby members of the dorms met and set up the rules to be followed. There would be complete rule in the dorms by the student government of the dorms. All matters would be handled by this dorm government. This system would, of course, require work, honesty, cooperation—mostly work (if the concomitant responsibility looks darkly ominous to you forget the whole thing). However, we here at PLC are no longer children, we are self-acknowledged adults and should be able, with work, to make this system operate efficiently and well.

This column is too short to completely set down any extensive set of changes, but possibly you get the point. There are proud areas here at PLC that have a profound influence and effect on the student body. However, due to various causes, most of the areas are not accessible to student entry, the students have no voice in much that is extremely important as far as they are concerned. We believe that this is not the way it should be and many changes should be made; indeed are necessary.

Our thesis is simply that student government should be broadened to the point where all aspects of campus life and activity are run by and left to the students.

Do we have an elixir that will bring this about? Right! Hard work, an intense interest, wanting to make it work, some good old fashioned enthusiasm and perspiration. We won't get anywhere with our present running violently about doing nothing, our apathy and indifference and our "Why should I do anything" attitudes.

Mediocrity--A Malignancy?

By Topper Nielsen

There is an attitude of indifference which seems to have penetrated the campuses of American colleges. Students of today have adopted a position of mediocrity. They are satisfied with just getting along. Our own campus is not to be exempted. It is a sorry state of affairs. The future can only envision continual degradation of intellect and cultural standards, if this trend continues.

It is imperative that we analyze the situation. Let us look to the Bible and see what Christ says in Matthew 23: 14-30. There we see that He wants us to do the best we can with our talents. That is exactly what isn't being done. God wants it to be as one of our purposes here on earth to make his creation as perfect and beautiful as is possible. As college students a special responsibility is ours. We have been given the opportunity beyond others to help create a more perfect world. The solution lies in the desire to make our minds fertile fields for intellectual nurture. We must not stop at what is necessary to get by. Read beyond: study science, philosophy, art, as well as all the other areas of learning. To be accomplished in all fields of intellect is the goal. Then we are doing God's will in perfecting this creation. Learn to see

the beauty in the finer things in life, in arts as well as daily tasks.

By doing our best to perfect our minds, tastes and bodies, this one purpose of God's creation and our position as God's children, will be on a clearer road toward an acceptable solution.

However, it must be remembered that power, fame and riches are not parts of the solution at all. If these things follow, they are only good if they are further used for the attainment of higher goals and the demolition of mediocrity and its disgusting atmosphere. As members of a Christian student body, the heavy responsibility of setting the example must not be evaded but must be met head on in an united attempt to create these standards.

A New Song

By John Cook

Out of the light the thunder came, To torture the earth with his infamous fame.

He crept up close to lay his snare, And snaring, lett us dying there.

Into the night the true light came, To capture love and give it His name.

He lived in low humanity, And dying, shrouded it vindictively.

In mire He le'pt where I did grope, To break the chains of shackled hope.

He gave me cause to sing a new song, And singing, march on to His heavenly throng.

C. S. A. SPEAKS



PLC is experiencing a period of regression! There are too few actually participating in the life of our 1000-member "Happy Family." The idea of our being a family allows too many to avoid responsibility and contribution. This is a good breeding ground for stagnation and decay. It is an easy path to find; no real demands, no inconveniences—just a nice leisurely stroll. Is this why you are here? Is this the road of the cross?

It would appear that you are no different the day you receive your diploma, from that first exciting day of your college life four years previous. If this leisurely stroll has been your experience. But, if you have made progress, it is obvious you must have changed. And such a change did not occur as a thunderbolt but rather was realized as a gradual, almost imperceptible, process in a forward direction. If we want growth in our lives it must come by being a little different for

having experienced another day.

If we want to experience growth, we must not only receive sustenance, but give of ourselves also. Consequently we don't go to meetings just to make our appearance, but rather we should go to bring something to the group, so that in some small measure the group may have grown.

To you every group on campus is not the solution. This does not solve any problem, but instead feeds the monster of organizational impotency. Then it must be seen that the individual is the important factor, because our organizations are made up of such individuals.

If the organization is to grow, the growth can only come from the person. Therefore, each person has the responsibility of a leader. The life and growth of such organization in which you participate is dependent upon you and not the 1,000 members of the "Happy Family." Be the leading participant in your organization!

or even fifteen. Quite a thought that! Somehow most of us feel one ought to be at least twenty by the time one is forty. Or perhaps even twenty-one.

Hold on now, quit pushing, you all! What hounds of heaven are these—anyway? Want us to be grownups when we're still in college? No, perhaps not, but when does one begin to play his part in the community? When he is a senior? After he graduates? After he has his first job? After he is settled in his first job? After he has lived in a community for ten years? When? Is it insane to suggest that no one becomes something or someone different after he is twenty that he hasn't already been for many, many years before he became twenty? If we don't vote now in student assemblies, do we really think we shall be active in citizenship later?

If we are not excited now about God in Christ, how gray will our hair have to get first? If we are not alive enough to write about our views in the Mooring Mast, do we honestly aspire to edit Life Magazine tomorrow? Who's kidding whom—anyhow? Of all human dreams, perhaps this is the idealist, that he who looks on for forty years, will make history in the next twenty. No there's one still more be deviled, that he who is not a student by age twenty will ever be one.

The Critical Eye

By John Kuethe

We start out saying it as four-year-olds talking it over with other four-year-olds. "I'm going to be . . ." Sometimes it's firemen, sometimes cowboys. It doesn't matter. Not really. And we all understand that it doesn't matter not when one is four. Nor when one is eight. One can be a hundred things before one is fifteen. It is probably part of growing up, this procession of images of what may be passing across the mind. It's a kind of game. No harm in it.

We aren't amused any longer when forty-year-olds still play at the game: "I'm going to be . . ." Especially alarmed are we when the forty-year-old has never done anything but play with his sand on the beach all his life, when he has never played seriously enough with any one thing so that we could say he is "something" or "somebody" other than "playboy" or "dreamer." We all understand that, life being what it is, a matter of twenty years or so left after on has become forty, one shouldn't be four when one is forty,

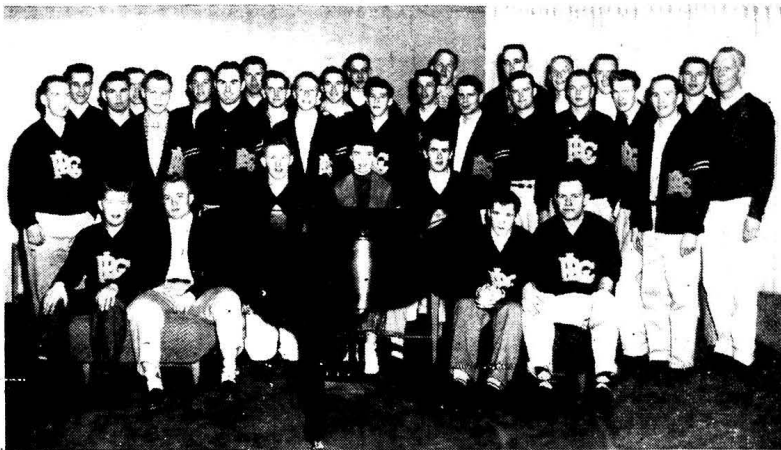
Debaters To Attend Calif. Tournament

Connie Hustad, Stuart Gilbreath, Judy Bureker, Tom Swindland, forensic students, and Mr. Theodore Karl, speech director, will be Pi Kappa Delta's representatives to the national Pi Kappa Delta convention-tournament in Redlands, Calif., April 2-8.

This convention-tournament, together with the International Debate, ranks in top place in PLC's forensic activities, according to Mr. Karl. About 700 of the nation's best debaters, representing 250 colleges and universities, will compete at the tournament.

Four events, debate, oratory, extemporaneous speaking, and discussion, will occupy the students' time during the tournament. Only one representative from each school may participate in any of the events according to the present rules.

Tom Swindland, vice-president of the local chapter of Pi Kappa Delta, will be the chapter's voting delegate to the convention.



Members of the Letterman's Chorus who will present their Minstrel Show next Saturday night, with their accompanist, Cali Christensen, and director, Jerry Bayne.

Lettermen To Give Annual Minstrel Show

Complete with black face and a mystery interlocutor, the Letterman's Chorus will present their annual Minstrel Show, on Saturday, March 19, at 8:00 p.m. in the CMS auditorium. Jerry Bayne is director of the group.

In the variety program they will sing such numbers as "Mood Indigo," "Dry Bones," "Old Man River" and "This Is My Country."

Also featured in two spiritual numbers will be a double quartet consisting of Vern Hanson, Brian Price, Dennis Rodin, Bruce Hille, Larry Ross, Richie Heins, Dwaine Brandt and Eddie Larson.

This will be the fifth annual show of the group which Prof. Gunnar J. Malmin was instrumental in starting.

RUSLER'S MARKET

GROCERIES - MEATS
VEGETABLES

Garfield St. Parkland

Stella's Flowers

Flowers for All Occasions
WE DELIVER

415 Garfield St. GR. 7463

OPPORTUNITY FOR STUDENTS

CUTCO

Division of Wearver, "Finest in Cutlery"

See

OWEN H. FLATBERG
PLC, North Hall, Room C-17
Parkland, Washington
Phone: GRanite 8671, Ext. 161

E.L.C. Awards Scholarships To College Students

In an article appearing in the January 1955 issue of *Frontiers*, the LSA publication, Karl Hertz, professor of sociology at Wittenberg College, considers the subject of academic freedom. The essence of the article is the way in which freedom in our colleges is endangered by what Professor Hertz terms "sins in education."

Academic freedom is "the self-imposed moral discipline of the academic community." It is not unrestricted liberty to do as one pleases, it is "in the end the freedom of the moral obligation to tell the truth though the heavens fall."

"The greatest threat to academic freedom comes not from evil men but from defective institutions. The most grievous violation of liberty in our colleges is not the occasional arbitrary repression of the freedom of an individual teacher, but the obstruction to effective freedom built into the very structure of education."

"Liberal education . . . is education for freedom because it can be properly carried out only in an atmosphere of freedom, where no ideas are tabu and all ideas are subject to vigorous, critical scrutiny."

"In many Lutheran colleges, there has been, of course, no problem of academic freedom because: 1) their faculties have been notoriously even more powerless than those of other institutions, 2) subordination to church-dominated policies has often placed the emphasis on religious indoctrination and pietistic moral paternalism, and 3) faculty in-breeding has assured 'safe' professors; underpaying and overworking them has put them in a position where the poor devils can't afford to protest."

PLC Will Be Host To Oxford Debators

"PLC has been honored as one of three colleges of the Northwest to be host to Jennifer Copeman and Lester Hopley, International Debate representatives from Oxford University of London," announces Mr. Theodore O. H. Karl, speech director. The guests will meet PLC representatives in a formal debate in the CMS building Friday, March 25.

Stuart Gilbreath and Tom Swindland have been chosen to represent PLC in the debate. According to Mr. Karl, this is one of the greatest honors PLC can bestow upon a debater.

John Holm, president of the sponsoring organization, Pi Kappa Delta, has this to say of PLC's record in International Debate: "These representatives have always reported to their sponsors, the Institute of International Education, Inc., that PLC has been one of the finest competitors they have met."

The topic of the debate is the national debate problem of 1954-55. Resolved: That the United States Should Extend Diplomatic Recognition to the Communist Government of China. PLC will debate the negative, and the guests, the affirmative.

LSA Publication Discusses College Academic Freedom

College scholarships totaling \$9,000 will be awarded through the Young People's Luther League of the Evangelical Lutheran Church this year, according to the Rev. Gerald L. Hinderlie, Minneapolis, YPLL director.

In his announcement today, Hinderlie said that the scholarship funds are being provided by the Women's Missionary Federation of the ELC and by the Lutheran Brotherhood Insurance Society.

Scholarship winners who are present at the International YPLL convention in San Francisco June 21-26 will receive their scholarship certificates at one of the convention sessions, Hinderlie said.

Awards include twenty-nine \$150 Lutheran Brotherhood High School Youth Scholarships. As many as 25 grants annually will be made from an \$8,000 allotment included in the WMF's \$20,000 grant to the Lutheran Educational Aid Fund (LEAF) in 1955-56.

Awards made under the LEAF program will be supplemented by 1904s made available, as specified by LEAF requirements, to the student by the college of his choice.

Nominations for the grants, to be applied to freshman year costs at any of the five ELC colleges, must be made by local Luther League organizations, Hinderlie said.

Deadline for applications is April 15. Applications should be sent to the Young People's Luther League, 422 S. 5th St., Minneapolis 15, Minn.

Application blanks for the Lutheran Brotherhood awards may be obtained by writing the YPLL. Nominations for the LEAF awards are to be made on LEAF application forms, obtainable in all ELC parishes or from the department of Christian Education, 422 S. 5th St., Minneapolis 15, Minn.

Support Saga Carnival

WILL APPEAR AT SAGA CARNIVAL



"Benny and Tommy," musical variationists, will be featured at the Sage Coronation on Friday night.

Parkland CYCLE AND KEY
BICYCLE RENTAL
Garfield St. GRanite 5772

Sewing of all Kinds
Retining Cloth and Fur Coats
MRS. WHITE
418 Garfield Parkland

dimes in time will grow into

Thrift is Part of Your Education

Open a Savings Account NOW

LAKEWOOD BRANCH
PUGET SOUND NATIONAL BANK
MAIN OFFICE - LINCOLN K STREET - LAKEWOOD
MEMBER FEDERAL DEPOSIT INSURANCE CORPORATION - FEDERAL RESERVE SYSTEM

CENTRE CLEANERS
★ ONE-DAY SERVICE ★
"It's time to get the Spring clothes ready, we hope!"
NEW LOCATION: 415 Garfield St., next to the Donut Bar
PARKLAND CENTRE PARKLAND

When You Want Books
C. Fred Christensen
Bookeller and Stationer
932 Pacific Ave. BR. 4629
Tacoma, Wash.

It's VERN'S . . .
for cooked to order DeLuxe Hamburgers - Fish and Chips
Home-made Pies
9th & Pacific Tacoma

Support Your

**SAGA
CARNIVAL**



Vote for Your Favorite

**KING AND QUEEN
Candidates**

NEXT WEDNESDAY

"Sport-Light"

by Walt Ball

Clear the "Parkland Pebbles" and bring on the sunshine, that baseball season is here. The Lutes will soon be trying for another Evergreen Conference championship in fact, their third in a row. In this conference the league is split into two divisions, East and West, containing only six teams, EFC dropping out because of a difference in semester systems. So that leaves CPS, WWCE, and PLC in the Western half and Whitworth, EWCE, and Central in the other division.

1954 FINAL STANDINGS					
West			East		
W	L		W	L	
Pacific Lutheran	5	3	Central Wash.	6	2
Puget Sound	4	4	Whitworth	5	3
Western Wash.	3	5	Eastern Wash.	1	7

PLAYOFFS

- Pacific Lutheran 7, Central Washington 6
- Pacific Lutheran 11, Central Washington 8
- Pacific Lutheran 12, Central Washington 1

Last year's graduation lost the Lute's five first stringers—Jim Ball, Frank Karvovski, Ron Hillings, Dick Larson, and Bob Ross. Going by this, three new faces will be seen in the infield and two in the outfield for the Lutes this season.

Let's take a look at the prospects. The only two boys back from last year in the outfield will be Brian Price and Gary Sambla. Probably the brightest prospect to enter here is in the person of Ron McCallister, a freshman from Lincoln of Seattle, where he was all-city last season. Also on the list of hopefuls are Ron Storaasli, Jack Hennon, Lute Jerstad and Gale Thompson.

Moving into the infield we find Bob Olsen at first base with Rey Reep and Benny Ross trying for this position. Trying for second base this year, will be Jim Moore, freshman from Lincoln of Tacoma, and Rich Hems transfer from Concordia College in Portland. Leading candidates at shortstop are Don May from Clover Park; Chuck Hobbs, Lincoln of Tacoma; and Larry Shoberg, from sunny California. Over in the "hot corner" Larry Lane and Frank Lancaster will try their luck. Competition will be tough all the way around and everyone has an equal chance.

Catcher's position is pretty well nailed down by Don Gaarder, who will be backed up by Lynn Calkins.

All the top men from the mound staff are back. Top game winner last year was Duaine Brandt, with a 1-2 record, which gave him a place on the all-conference team, Vera Hanson with a 3-3 record and Bud Lester with a 1-3 are ready for a good season. Others trying for a regular turn will be Jerry Larson, Stan Pawley, and John Fromm.

The schedule for the season is as follows:

- April 9—Central, here.
- April 16—Central at Ellensburg.
- April 22—Western at Bellingham.
- April 29—College of Puget Sound, here.
- May 3—University of British Columbia, here.
- May 10—Western Washington, here.
- May 13—College of Puget Sound, here.

Coach Mary Harselman is dickering at the present for a double-header with the University of Washington somewhere around the first of April. Here's hoping he gets plenty of good weather for practice, because time is of the essence.

There is nothing truly valuable which can be purchased without pains and labour.

PATRONIZE OUR ADVERTISERS

INTRAMURAL HIGHLIGHTS

This week marks the close of another season of intramural basketball. The North Hall (3) five have maintained their winning ways to stay atop the league but have two more games remaining. The Omegas, after winning eleven in a row, lost a pair this last week to slip into second place. DeJardine's, once tied for first place with North Hall (3), are now holding down the third place spot after a couple setbacks. In the No. 2 league, Central Barracks has come up to take over the first place spot and are followed closely by the powerful Stubs. The Chimps and Faculty are tied for third, each with a 9 and 10 record. League standings are as follows:

LEAGUE NO. ONE

	W	L
North Hall (3)	11	3
Omegas	11	4
DeJardine's	13	4
Ivy Hall (A)	11	5
Crew Cuts	11	6
Goeh's Gulch	9	9
Tacoma	9	10

LEAGUE NO. TWO

	W	L
Central Barracks	11	9
Stubs	9	9
Chimps	9	10
Faculty	9	10
Eastern	8	9
Jokers	4	14
Clover Creek	2	16
Ivy Hall (B)	0	18

Big Curt Hovland has been consistently hitting the hoop and remains the league's leading scorer up to the latest recordings. Hovland has a total of 274 and is 35 points a head of his nearest opponent, Richard Schwindt, who has a total of 225. Other scoring leaders include Lowell Haeffele, 233 points; Stan Pawley, 230 points; and Clyde Genz, 211 points.

The officials of the intramural league held a meeting Wednesday evening and from this meeting came the 1954-55 all-star selections. The first team includes: Ray Reiersen, forward, North Hall (3).

Bruce Hille, forward, Omegas.
Gerald Schimke, center, Chimps.
Dick Bromely, guard, DeJardine's.

Pacific Lutheran Track Squad Begins Spring Workouts with Salzman As Coach

With the current basketball season over, track comes into focus. Head track coach, Mark Salzman, plans on a good season with plenty of returning lettermen plus some outstanding freshman prospects.

Lettermen back this year are Stan Jacobson, a junior from Richland (Center, Wisconsin). Stan runs both the half mile and the mile. Don Gaarder, a senior from Fort Shaw, Montana, is back for his last year. Igon ran the 100-yard dash in 15

seconds last year. In the hurdles, Ivar Eliason from Kennewick, Wn., runs both the high and the lows as well as the 220-yard dash. In the high jump, Dale Storaasli, a Parkland product and only a sophomore, has jumped over six feet.

In other field events, Galen Nusbaum, a junior from Tacoma, is a five event man, entering in both dashes, pole vault, broad jump and half mile. Dave England will be on hand for the non-conference meets. Dave throws the javelin and also pole vaults. In the shotput event there is Curtis Hovland, a sophomore from Canby, Oregon.

Some of the freshmen that Coach Salzman expects to help the squad include Jim Haaland from Albany, Oregon. Jim runs both the high and low hurdles. Also running the hurdles is Dave Knutson from Kirkland, Washington. From Turlock, California, comes Lowell Sheidahl who runs the distances. Another promising distance runner is Don Zarrud from Kenesic, Washington.

Lowell Haeffele, guard, North Hall (3).

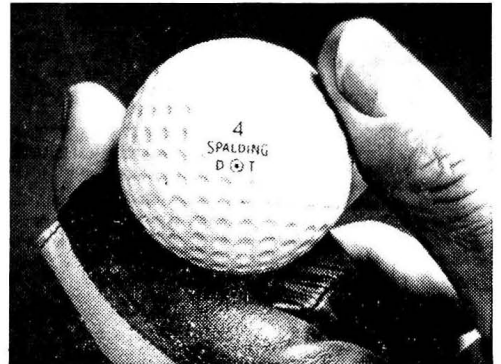
Second Team

Curt Hovland, forward, Crew Cuts
Richard Schwindt, forward, Stubs
Bill Foego, center, Omegas.
Ray Lester, guard, Ivy Hall (A).
Charles Lester, guard, Ivy Hall (A).

Charles Gobbs, guard, Tacoma.

Honorable Mention

Stan Pawlen, Central Barracks;
Ibnae Moe, Ivy Hall (A); Jack Henin, Ivy Hall (A); Clyde Genz, Omegas; Ivar Eliason, DeJardine's; and Dick Kent, Crew Cuts.



The best ball for your game has the exclusive DURA-THIN COVER

Here's amazing new durability in a high-compression ball. The DURA-THIN* cover provides this great new Spalding DOT® with real scuff resistance... keeps the DOT uniform and true, even on rugged high-iron shots. The new DOT has a greater compactness for truer, more uniform flight. It's actually an economical ball for you to play.

And, with all this new durability, new DOTs still offer the long, long carry every hard-hitter wants.

At school, or on your home course, make your next round a better one with this greatest of all golf balls, Spalding DURA-THIN DOTs.

SPALDING sets the pace in sports

*Trade-mark

ART'S SHOE SHOP
Garfield Street
QUALITY REPAIRING - DYEING

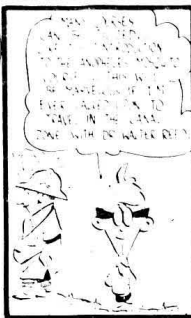
Madden's Men's & Little Men's Shop
Parkland Center Bldg. GRanite 4242

Parkland XXX Drive-In
Delicious Hot Chocolate
119th & Pacific GR. 3211

PROMPT, COURTEOUS FUEL OIL DELIVERY . . .
Pochel Distributing Co.
Your Fuel Oil & Appliance Dealer
140th and Pacific Avenue Phone GR. 8624

THIS IS *Your* LIFE INSURANCE SOCIETY
Lutheran Brotherhood
LEGAL RESERVE LIFE INSURANCE
608 SECOND AVENUE SOUTH • MINNEAPOLIS 2, MINN.
More than \$500,000,000 Life Insurance in force
EINAR BOTTEN, General Agent, 312 North 85th St., Seattle 3, Washington

One of the most important habits you may ever learn is the life insurance method of saving. It is regular, protected, compulsory, and sure. The LUTHERAN BROTHERHOOD home office will be glad to supply complete information on how life insurance can serve your needs during and after college.



C.S.A To Meet

Pastor John Kuethe, instructor in religion, was the speaker at the C.S.A. fellowship Sunday night in the upper SUB. He spoke to the students and a few members of the faculty on "Pre-destination."

Pre-destination was shown as a doctrine of the Lutheran Church of which most Lutherans have rather a scanty knowledge. He said that pre-destination is a means of assurance; a positive thing not negative. This was pointed out in showing the difference between pre-destination and double-predestination, which teaches that God predestines some to heaven and some to hell. This is not what the Lutheran church teaches. In predestination Christ knows us as a shepherd knows his sheep. We are foreordained. Pastor Neale E. Nelson of Broadview Lutheran Memorial Church in Seattle, will speak on the general theme, "The World Mission of the Church." Since he plans to make a more personal application he has chosen as his topic, "Where Do We go From Here?"

All are invited, and urged to come to the SUB for Christian fellowship that is offered to us by these meetings.

In his children. He chose us and predestined us all to a home in heaven if we only accept the fact that He has.

A question period followed in which students asked questions concerning the topic.

C.S.A. fellowship will meet again Sunday night in the upper SUB.

PATRONIZE OUR ADVERTISERS

NEAL E. THORSEN
TRICKS - JOKES - MAGIC
Costumes, Tuxedos, Serpentine
926 1/2 Broadway MA. 4861

New Bill Concerning Real Estate Take

Until recently private non-tax-supported institutions of higher education of the state have been exempt from paying real estate taxes on 40 acres of campus-use property. Now in a recently passed bill initiated by the Association of Non-tax-supported Colleges and Universities in Washington, Inc., of which Dr. Eastvold is president, this exemption has been extended to 100 acres with an additional exemption from paying sales and excise taxes.

Since the ten private colleges and universities in the state serve nearly one-third of all students enrolled in higher learning in Washington, with an expected increase by 1963, the \$100,000 loss to the state will be small compared to its benefits to these institutions.

PLC Debators Return From Tournament

A tired, but happy debate team returned from Linfield College in McMinnville, Oregon, early Sunday morning. The seventeen members had been attending the Silver Anniversary Tournament. Only a few points from sweepstakes, the team did very well.

In Senior Men's, Stu Gilbreath placed first in oratory, first in Lincoln-Douglass debate, second in extemporaneous; Bob Lundgren took second in review, third in salesmanship; Tom Swindland placed second in impromptu. In Senior Women, Judy Bureker placed second in oratory; Connie Hustad and Judy Bureker placed third in Oxford Style debate.

In the Junior Men's, Tom Reeves placed third in Lincoln-Douglass debate. In Junior women, Anita Schnell placed first in Congress, second in extemporaneous, second in impromptu. Beverly Sveningsen placed second in Congress.

Support Saga Carnival

Eastvold Terms Trip Success

Dr. S. C. Eastvold returned March 5 from Minneapolis where he attended church meetings and spoke at two meetings.

Friday evening, March 4, he met with 20 PLC alumni of St. Paul at St. Anthony Park Church where the Reverend Al Lewis is pastor. The alumni consisting of Seminary students and wives, former students, and former faculty members now studying for advanced degrees came from 20 miles east and west of St. Paul to attend.

Sunday he dedicated the new sanctuary of Trinity Lutheran Lutheran Church, at Eau Claire, Wisconsin. This church is one of three which has branched from First Lutheran Church, a congregation which he served from 1933 to 1943.

On Wednesday, March 2, Dr. Eastvold conducted Lenten services at Our Savior's Lutheran Church in Minneapolis where the Reverend Aulf Kraabel, formerly president of the board of trustees and brother of Mrs. Morken, is pastor. "All these people send greetings to teachers and staff."

In his capacity as first vice president of the E.L.C. he attended church meetings from February 28 to March 4. He also represented the college at the conference of the board of education of the E.L.C.

Rogness Speaks Here

(Continued from Page One) critique and constant self examination. "The church needs no economic or political order or philosophy but must stand as a conscience."

Rogness continued by saying that some Europeans are amazed by the initiative and enthusiasm of the American churches. But they are also amazed by the complete lack of application of our Christian faith to our social, economic and political problems.

Replying to questions concerning the developments at the seminary, he claimed that a "Substantial program of refurbishing and rebuilding will be speedily under way." Also there is expected to be an increased staff in the near future.

Support Saga Carnival

Feature Lock Diamonds Waltham
Parkland Jewelers
Doris and Elmer Gable
Garfield St. Parkland
GRanite 7828

C.O. Lynn Co.
MORTUARY
717 TACOMA AVE. Phone MAIN 7745

Old Main to Have New Constitution

"Old Main residents will soon vote on the adoption of a revised constitution," announces Marilyn Hefly, dormitory president.

The committee for the revision was composed of Greta Hagenson, sophomore chairman; Janet Towe, freshman; and Darlene Haugen, sophomore. Miss Margaret Wickstrom, Dean of Women, and Miss Freia Ronze, housemother, advised the committee.

The revised constitution was presented by Greta Hagenson, Tuesday, March 1, at a dormitory meeting. The new constitution will be passed when it is copied and then in a week from that time it will be voted on.

The two main changes in the constitution were that the official name of the organization has been changed from Delta Pi Kappa to Old Main Residents Hall and the office of I.C.C. representative has been abolished. The new constitution gives the duties of I.C.C. representative to the vice-president, who in the past had few duties.

The reasons for the new constitution were to give Old Main Residents their own special constitution since the beginning of the two women's dormitories on campus and to bring it up to date.

Old Main Bake Sale

Old Main Residents have scheduled another bake sale for Monday, March 14, beginning immediately after chapel. Funds will go for the promotion of the Spring Tolo which is scheduled for April 15. Home-made hard fudge, cookies and brownies will be the goods on sale.

Laurinat's Apparel
"Distinctive Merchandise"
409 Garfield St. Parkland
Phone GRanite 5317

WEEK'S CALENDAR

Sunday, March 13
7:00 p.m.—C. S. A.

Monday, March 14
Choir meetings.
7:00 p.m.—Mission Emphasis.
6:45—Prayer Service, C-M-S balcony.
7:15—I.C.C. L-104.
9:00—Pi Kappa Delta, CMS-122.

Tuesday, March 15
12:30—D.R.G., Dayroom.
12:50—Lettermen, M-109.
4:00—L.D.R.
6:30—Spurs, 4th floor lounge.
6:30—Mission Crusaders, T. C.
6:45—Student Council, ASBO.
7:30—Confirmation, Roe's home.
7:30—Lady Lutes, Club room.
9:00—C.S.A. Council.

Wednesday, March 16
6:15 a.m.—Toastmasters, in Coffee Shop.
7:15 p.m.—American Chemical Society, S-105.
7:00—Mission Emphasis, Reverend Rolander.
7:30—Alpha Sigma Lambda, Club room.

Thursday, March 17
1:00—Campus Devotions, T. C.
6:30—Alpha Phi Omega, L-104.
7:15—White Caps, L-104.
7:30—P.T.A., upper SUB.

Friday, March 18
Saga Carnival.

Saturday, March 19
Saga Carnival.
Alpha Sigma Lambda and Business Finance Class, field trips to Boeving's.

Sunday, March 20
3:00—Mu Phi Epsilon, pledging, CMS lounge.
8:00—Choir of West Homecoming Concert, First Lutheran Church, Tacoma.

TOM'S ICE CREAMERY
SANDWICHES - HOT DOGS
SHAKES - MALTS

SPORTING GOODS HEADQUARTERS
EST. 1284
Washington HARDWARE CO. SPORTS SHOP
818 - 24 PACIFIC • 923 COMMERCE
FISHING EQUIPMENT

TACOMA 44
WASH.

U. S. POSTAGE
Bulk Mailing
PAID.
Non-Profit Organization
Permit No. 51

For all of your Automotive Service needs . . .
Our Regular is Supreme — Supreme is Best
GLADIATOR SERVICE
Pacific Avenue Mechanic on Duty GRanite 7863

Remember us . . when you need printing
programs, cards, ribbons, pamphlets,
tickets, etc. . . that's our business!
GRanite 7100
LaCrosse Printers
PRINTERS FOR YOUR COLLEGE
Located across from the Triple X at 118th and Pacific Avenue