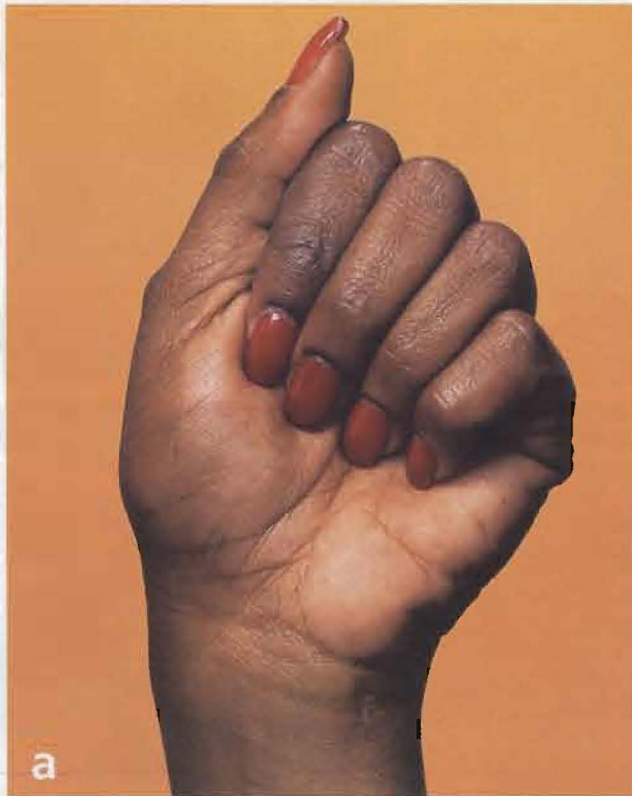


Pacific Lutheran

S C E N E

W I N T E R 1 9 9 6



Giving Care

Plus: Her Majesty Queen Sonja Receives PLU Degree

Alum Co-creates Graham Kerr Cookbook

Pacific Lutheran

SCENE

WINTER 1996

SPECIAL SECTION



Giving Care

7 The Meaning of Care

Five PLU authors explore six different aspects of "care" as it relates to the guiding statement in the PLU 2000 planning document.

9 Discover Whom You Serve

William Foegen '57 brings a world vision to the subject of care.

FEATURES

3 Her Majesty Queen Sonja of Norway Receives PLU Degree

Yet another distinguished alum from PLU.

5 Alumni Siblings to Endow Scandinavian Studies Chair

Richard Svare '50 and Betty Svare Parrott '38 will honor their parents and brothers with a future gift to PLU.

11 Couch Potatoes Beware

PLU professor Tony Evans is part of coalition to promote exercise.

ALUMNI FEATURES

12 Brenda Anderson '88 Recalls Days on Graham Kerr Show

Alum co-creates cookbook with famous chef.

13 Alumni Board Convenes Fall Meeting

New Alumni Board President Susan Stringer '76 led the group's annual fall meeting.

DEPARTMENTS

3 In the News

10 Q Club

14 Class Notes

18 Sports

20 Calendar



ON THE COVER

There are many ways to care for people, the community and the earth. One way is to provide a helping hand; another is to learn to communicate in a different way. PLU's Department of Languages offers an introduction to the structure of American Sign Language and to the world of the hearing impaired. The courses teach basic signing skills and sign language vocabulary, finger spelling, and the particular needs and problems of the deaf.

Dear Readers:

As you have no doubt noticed, this publication has undergone a tremendous change. Last year we welcomed **Janet Prichard** as editor and **Linda Elliott** as head writer. After a whirlwind year, Prichard now assumes senior editor duties and Elliott has been named editor.

This completely redesigned issue also unveils a new masthead. They were designed by **Dean Driskell**, a new member of the *Pacific Lutheran Scene* staff. During his 10 years at PLU he has won a number of awards for his design and art direction. **Joel Markquart '94** joined PLU's graphics team in 1995 and will assist Driskell with this publication.

See PLU through the lens of **Chris Tumbusch**, PLU's new campus photographer (see story page 4). **Tamara Grunhurd '93** joined the *Pacific Lutheran Scene* staff two issues ago as an editorial assistant. In addition to her writing and editing duties for *Scene*, Grunhurd is also the editor of *Campus Voice*, PLU's weekly in-house newsletter.

Please let us know what you think of the new *Pacific Lutheran Scene*. Call us at 206-535-7430, write to us at PLU, Tacoma, WA 98447, or e-mail to scene@plu.edu.

— Pacific Lutheran Scene Editorial Staff



MANAGING EDITOR
Paul Porter

SENIOR EDITOR
Janet Prichard

EDITOR
Linda Elliott

ART DIRECTOR
Dean Driskell

PHOTOGRAPHER
Chris Tumbusch

CLASS NOTES EDITOR
Amy Kramer

SPORTS EDITOR
Nick Dawson

EDITORIAL ASSISTANT
Tamara Grunhurd '93

DESIGN ASSISTANT
Joel Markquart '94

STAFF INTERNS
Rebekah Ellis '96
Erik Ryan '96

ADVISORY BOARD
Loren Anderson
Jan Brazzell
Dana Endicott '92
Lauralee Hagen '75
Richard Londgren '59
Roberta Marsh '85
Jeff Rounce '85
Cliff Rowe
Dan Voelpel '83

WINTER 1996
VOLUME XXVI, NUMBER 2

Pacific Lutheran Scene (ISSN 0886-3369) is published quarterly by Pacific Lutheran University, S. 121st and Park Avenue, Tacoma, Washington 98447-0003. Second class non-profit postage paid at Tacoma, Wash., and additional offices. Postmaster: Send address change to Development Data, Nesvig Alumni Center, PLU, Tacoma, Wash. 98447-0003.

LETTERS TO THE EDITOR
Your letters are welcome and should be addressed to Pacific Lutheran Scene Editor, PLU, Tacoma, Wash., 98447, faxed to 206-535-8331, or e-mailed to SCENE@PLU.edu. Letters may be edited for clarity and length.

INTERNET
Visit our home page on the World Wide Web (<http://www.plu.edu>)

STATEMENT OF OWNERSHIP

Publication Name: Scene
Issue Date for Circulation Data: Winter 1996

Extent and Nature of Circulation:	No. Copies Each Issue During Preceding 12 months	No. Copies Single Issue Nearest Filing Date
a. Total No. Copies (Net Press Run)	35,100	37,100
b. Paid and/or Requested Circulation		
c. Total Paid and/or Requested Circulation		
d. Free Distribution by Mail	33,000	35,000
e. Free Distribution Outside the Mail	2,000	2,000
f. Total Free Distribution	35,000	37,000
g. Total Distribution	35,000	37,000
h. Copies Not Distributed	100	100
i. Total	35,100	37,100

Signature and Title of Editor:


Director, Public Relations

Date: September 27, 1995

I certify that all information furnished on this form is true and complete. I understand that anyone who furnishes false or misleading information on this form or who omits material or information requested on the form may be subject to criminal sanctions (including fines and imprisonment) and/or civil sanctions (including multiple damages and civil penalties).



CHRIS TUBBUSCH



MATT KUSCHE

A Royal Visit

October 26, 1995

TOP LEFT: The Andersons welcome Their Majesties, The King and Queen of Norway, to PLU. TOP RIGHT: President Anderson shows Her Majesty the Rune Stones in Red Square. The sculpture commemorated the 1975 PLU visit by her late father-in-law King Olav V of Norway. BOTTOM: Provost Paul Menzel (left) and faculty chair Patricia Killen (right) place the doctor of humane letters hood over Her Majesty, Sonja, Queen of Norway.

Journalism Professor Honored for Distinguished Teaching



Cliff Rowe (communication) was honored with the Society of Professional Journalists Distinguished Teaching in Journalism Award on Oct. 13 at the SPJ national convention in St. Paul, Minn.

Summer Sessions Catalog Earns Top Award

Summer Sessions Dean Judy Carr '70 received the coveted "Charlie Award" for the 1995 summer catalog at the Western Association of Summer Sessions Administrators meeting this fall. WASSA is comprised of universities in 11 western states and four western provinces with summer sessions.

Congratulations to Dean Driskell (designer) and LeAnn Evey (Special Academic Programs) for their work on the catalog. Call 206-535-7129 to receive a copy of the Summer Sessions '96 catalog available in March.

Composer-in-Residence Captures Award

The American Society of Composers, Authors and Publishers honored Gregory Youtz for the third consecutive year with an award in recognition of his many original compositions. PLU's Composer-In-Residence for 11 years, Youtz's well-known works include "FireWorks," composed in 1989, and the opera "Songs from the Cedar House," premiered in 1991 in honor of PLU's centennial.

Campus Gets Makeover

The PLU campus got a face-lift last summer. Improvements include a new running track, rehabilitation of Harstad, Kreidler, Tingelstad, Ordal and Stuen halls; classroom upgrades, merging of several offices to create a new Student Services Center, and new doors and front entrance improvements for the Administration building; rebricking and resurfacing of several walkways; a new walkway from Red Square to Hong Hall and various landscaping projects.

SCC Donates Artifact to Traveling Exhibit

The Scandinavian Cultural Center provided an artifact for the Norwegian Folk Art Exhibition, *Norwegian Folk Art: The Migration of a Tradition*, which will make several stops in the US and Norway now through 1997. It will be in Seattle at the Nordic Heritage Museum from February 1997-May 1997.

An article from the SCC's permanent collection, an 18th-century chip-carved box decorated with hearts and rondels (intertwined circles), is on loan to the program. The exhibition chronicles four centuries in the development of Norwegian folk art, represented both in Norway and the United States.

President Elected to ELCA Council

President Loren Anderson was elected to a five-year term on the executive committee of the Council of College Presidents of the ELCA. The council is composed of presidents of the 28 colleges and universities of the Evangelical Lutheran Church in America.



PLU Among "Best Colleges"

PLU remains the only university in the state of Washington to be honored in every *U.S. News and World Report* ranking of the top 15 western region colleges since the magazine began the "Best Colleges" survey in 1983.

This year PLU ranked 15th out of 505 in the western region.

Nursing Professor Emeritus Earns Service Award

PLU nursing Professor *emeritus* Luella Hefty received the Washington State Nurses Association Outstanding Nursing Leadership & Distinguished Service Award at the 1995 WSNA Convention. She was cited for her courtesy, consistency and professionalism in every circumstance, spanning more than 20 years of devoted service in community and public health. Additionally, she was recognized for her many research and scholarly publications, and years of caring and committed service to PLU and the Wellness Clinic.

Q Club Founder Dies



Clayton B. "Pete" Peterson, former PLU vice president for development, regent and Q Club founder, died on Oct. 13 at the age of 78.

"Pete was a tremendous professional mentor and a real friend to me," said David Berntsen, director of development for PLU. "He was creative, hardworking and had a great sense of humor. He would promote any good ideas, especially if they had to do with youth, education or Scandinavian issues."

Under his leadership in the late '50s to early '70s, Peterson directed PLU's first capital fundraising program, which led to the construction of the Philip Hauge Administration building, the original Chris Knutzen Fellowship Hall and the Ramstad Hall addition.

He spearheaded the Program of Long-Range University Specifics (PLUS), which was aimed at achieving new levels of teaching, scholarships, counseling and research. During that period, more than \$14 million in new construction was added to the PLU Physical Plant.

He also established the Q Club in 1972, which now boasts more than 2,000 members and has brought upwards of \$13 million to PLU in unrestricted gifts and scholarships.

After leaving PLU in 1974, Peterson worked as development counselor for Children's Orthopedic Hospital in Seattle, and ran his own consulting firm. He was an avid Rotarian and earned the St. Olav Medal from then-King of Norway, Olav V.

Peterson was born on Dec. 7, 1917, in Eleva, Wis., and is survived by Leona A. Peterson, his wife of more than 55 years, daughters Barbara Vickers and Pamela Townsend, and numerous grandchildren.

Memorials may be made to the Clayton B. Peterson Scholarship Fund within Q Club. Call Dave Berntsen, (206) 535-7428, for more information.

Advocacy Program Launched

Forty-four PLU staff members began mentoring freshmen in September as part of the university's new Student Advocacy Program. The goal is to help students through the maze of non-academic life at PLU. Advocates were assigned 15-20 students each and will follow them through their years at PLU. If you are a parent of a PLU student, call Charles Nelson, Registrar, 206-535-7140 to contact your student's advocate.

Upward Bound Finds a Home at PLU

Sixty high school students in the Franklin Pierce and Bethel school districts will be better equipped for the future through a new Upward Bound program sponsored by the Metropolitan Development Council of Tacoma and PLU. The MDC will provide office space and PLU will provide educational opportunities for the students.

The U.S. Department of Education recently approved a four-year grant of \$225,000 for the program, the purpose of which is to identify high-potential students from mostly low-income families and nurture their academic development through high school and into college.

Gilbert Perez will head the program at PLU's East Campus facility.

PLU Posts Banner Year for Grants

The collaborative efforts of faculty and staff have made 1994-95 a banner year for grant activity. Funding approved amounted to \$809,151 last year, compared to \$585,391 for 1993-94. That's an increase of more than 27 percent. Congratulations to the 40 faculty and staff who obtained a total of 33 grants, including six funded requests from the previous fiscal year.

This year, PLU has been selected to receive funding for the 1995-96 Washington State Work Study/Federal State Student Incentive Grant community service proposal, "After School Enrichment Project: Mentoring Children At Risk." In addition, the Roman Meal Company donated \$12,000 to refurbish a classroom for business students.



KEN DUNMIRE

Brian Baird (psychology) has published two books, "Are We Having Fun Yet?" and "The Internship, Practicum, and Field Placement Handbook: A Guide for the Helping Professions." The first book, drawing on Baird's extensive experience in outdoor recreation and knowledge of psychology, confronts the changing dynamics of family and partner relationships as they move from indoors to out.

The second book is designed to help students and faculty in field learning opportunities in psychology, social work and related programs.

Laura F. Klein (anthropology) has co-edited the book "Women and Power in Native North America." In the Native societies examined, power is continually created and redefined through individual life stages and through the history of the society.

A New Face Behind the Lens

PLU welcomes new campus photographer Chris Tumbusch. Tumbusch, a photojournalist for 12 years, recently worked as a still photographer for Heckler Associates in Seattle. He was also chief photographer for *The Record-Courier* in Gardnerville, NY, and has contributed photographs for "Bill Nye the Science Guy" show. He has written, produced and directed numerous commercials and film projects. He replaces Ken Dunmire who retired in August.

Faculty Elected to ELCA Board

Walt Pilgrim (religion) was elected by the ELCA churchwide assembly to a six-year term to the Division for Higher Education and Schools. The board is responsible for ELCA policy on 28 colleges and universities, campus ministries and schools (day care through high school). He was also appointed to the ELCA Committee on Colleges and Universities.

PLU's 37th Fulbright Scholar is Teaching in Chile

Susan Hinderer '92 taught Spanish to English-speaking students at Enumclaw High School for three years. Now, as a Fulbright Scholar, she is teaching English to Spanish-speaking students at Kingston College in Concepcion, Chile, for one year.

Hinderer studied Spanish and graduated with a bachelor of arts degree and a teaching certificate. She is the fifth Fulbright scholar from PLU this year and PLU's 37th in 20 years.

Economics Professor on the Move



KEN DUNMIRE

Rachel Nugent (economics) was awarded a grant from the U.S. Environmental Protection Agency to work on sustainable development in the Willapa Bay area of Washington state. Nugent is working with colleagues on a project to assess community values for salmon restoration and identify feasible alternatives in implementing a community plan for sustainable development.

Nugent was also on special assignment this fall at the United Nations Food and Agricultural Organization in Rome, Italy. She was invited to participate in studying agricultural policies in the Asia and Pacific regions and will prepare several reports on world agriculture. She returns in January.

Siblings Plan to Endow Chair Honoring Their Family

"Our parents loved PLU and we wanted to honor that relationship," said Richard Svare '50.

To commemorate Their Majesties the King and Queen of Norway's visit to PLU in October, Richard and his sister Betty Parrott '38 will honor the memory of their parents and their brothers Robert, Gerhart and Donald. They have set into motion plans to endow the Dr. Trygve O. Svare and Hulda P. Svare Chair for Scandinavian Studies, currently held by Professor Audun Toven. Interest from this fund will provide permanent funding for the position.

"Scandinavians are known internationally for their hospitality, humility, informal style, love of nature, and quest for excellence in all endeavors. For many, Scandinavian societies are a model of decency and social democracy, where the welfare of all — men, women and children — is of paramount importance," said PLU President Loren J. Anderson in announcing the endowment.

"We are grateful to Richard and Betty for ensuring that generations of PLU students will have the opportunity to learn about and be influenced by this rich Scandinavian ethic," Anderson added.

In 1924 the Rev. Trygve Svare received calls from both St. Olaf College in Minnesota and Trinity Lutheran Church in Parkland. He came West, thus beginning a lifelong association with PLU as campus pastor and a member of its faculty. Four of Trygve and Hulda's children attended PLU, and only a war could prevent the fifth from attending.

Rev. Svare returned to his native Norway, once as a Fulbright exchange teacher and then as the United States Cultural Attaché. In honor of his life's achievements, PLU bestowed upon him an honorary doctor of laws degree in 1957.

Additional gifts to the fund have also been received. If you are interested in contributing to the endowed chair, please contact Ed Larson at 1-800-826-0035 or 206-535-7420.

Scandinavia

AN EXCLUSIVE ELCA COLLEGE AND UNIVERSITY TOUR

16 days and 15 nights

HELSINKI ✪ COPENHAGEN ✪
SCANDINAVIA SEAWAYS CRUISE ✪ OSLO ✪
ULVIK ✪ BERGEN ✪ STOCKHOLM

Plus an optional 3-Night Pre-Extension to St. Petersburg

Prices as low as

\$3499* **\$3999***
NEW YORK SEATTLE

Departing: Monday, July 8, 1996
Returning: Tuesday, July 23, 1996

Call today for your
Early Booking Discount Date


For reservations or more information
call Vantage Travel toll-free

1-800-833-0899

*per person based on double occupancy,
including the Early Booking Discount



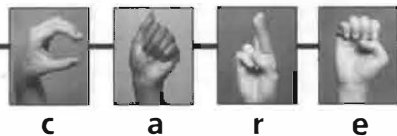
PRESENTED BY
PACIFIC LUTHERAN UNIVERSITY
Office of Alumni and Parent Relations



PLU seeks to empower students for lives of thoughtful inquiry, service, leadership and care — for other persons, for the community, and for the earth.

This sentence from PLU 2000, the university's long-range planning document, sends a clear message about what a PLU education means. This year *Pacific Lutheran Scene* will explore the reality behind the words. This issue focuses on care. The following special section reflects the lives of students and alumni who care deeply, sometimes passionately, about people, their community and the world.

Giving Care



The Meaning of Care

BY PHILIP NORDQUIST '56

Care and its various derivatives emerge out of several distinct Greek and Hebrew words. The words are used in a number of ways in both the Old and New Testaments and the usages cannot always be completely squared.

Basic to their meanings, however, is the understanding that the real existence of people is determined by the nature of their concern; and that concern — when freed from anxiety and preoccupation with self — can and must be extended to others. That is also basic to the meaning of the sentence under consideration. It has been fundamental to Pacific Lutheran University from the beginning.

We express our concern in different ways and at different levels. We say “take care” and mean pay attention, watch out, watch your step, don’t be naive, drive defensively. We live in a dangerous world and we all need to “take care.”

But that leads to another and deeper meaning of care, “to take care of” (if I may end a sentence that way). Here, the word is surrounded and supported by the New Testament Greek “agape” and the medieval Latin “caritas” and means love. So we in this community need to take care of our fellow human beings, that needs to be said over and over again, but we must also care for the earth. There has been carelessness in that regard and it must stop.

The late Lutheran theologian Joseph Sittler discussed that carelessness in a prophetic address to the Third Assembly of the World Council of Churches that met in New Delhi, India, in 1961, when he called for a “Christology of all creation.” His address helped jump-start — or accelerate — Christian concern about nature and care for the earth in the 1960s. In a sermon given at the University of Chicago about the same time, Sittler reminded his audience that there is no life apart from that setting: “Man’s selfhood hangs upon the persistence of the earth, ‘her’ dear known and remembered factualness is the matrix of the self.”

We must care for each other and we must care for the earth. That care must be expressed by individuals, but finally and most fully, it is the work and responsibility of communities. Care is most fully realized in communities. PLU is a community where that must be understood and where individuals and the community must act.

Philip Nordquist, Ph.D., is professor of history at PLU and the author of the PLU centennial book, “Educating for Service.”

A Physician’s Care

It was a long night. The baby liked the comfort of her mother’s womb too much to face the outside world. Finally, birth. And when midnight rolled around, Dr. Sandra Reilley ’76 left for home.

When the alarm clock sounded at 6 a.m. the next morning, the private-practice OB/GYN was ready to attack the day ahead. Caring for people is her life’s work. She reached the hospital doors at 7 a.m. in time to take me on rounds with her. First there was a patient, eight-months pregnant, with a puzzling infection. Charts, investigation, questions. Care.

Then the happy face of last night’s new mother and child greeted us. Reassurance, instructions, more charts, more care. Two more patients, then off to surgery.

After scrubbing, Dr. Reilley spent the next two hours deep in concentration, guiding her skilled hands to cure a patient in pain. With surgery complete, and after dictating the procedure for the patient’s primary care physician and insurance records, it was off to the office to prepare for a noon staff meeting. On the agenda was phone courtesy, bookkeeping updates, and scheduling software.

And this was Dr. Reilley’s day off.

— Janet Prichard

LEFT: Dr. Sandra Reilley ’76 is assisted by Dr. Andrew Bell in surgery.

Care for the Earth

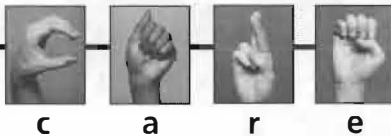


LEFT: Jeanette Dorner, dressed in traditional Indian field clothes, pauses at one of the first sampling sites where the Yamuna River leaves the foothills of the Himalayas. This is one of the cleaner stretches of river.

COURTESY OF JEANETTE DORNER

Jeanette Dorner ’94 smelled the river before she saw it. The Fulbright Scholar from PLU didn’t even have to dip her test kit into the sewage-choked water to know that particular stretch of the Yamuna River south of Delhi, India, registered zero oxygen and posted ammonia levels off the scale.

Dorner, who earned a bachelor of science in earth sciences and a bachelor of arts in environmental studies at PLU, has spent the last year studying the impact of development on the water quality of the Yamuna, one of the largest tributaries of the Ganges River. She didn’t discover anything the Indian government didn’t already know. Parts of the river are fine, others are (continued next page)



Care for the Earth *continued*

in dire need of help. For starters, the country needs to bolster its sanitary systems and greatly increase the number of toilets available in both urban and rural areas.

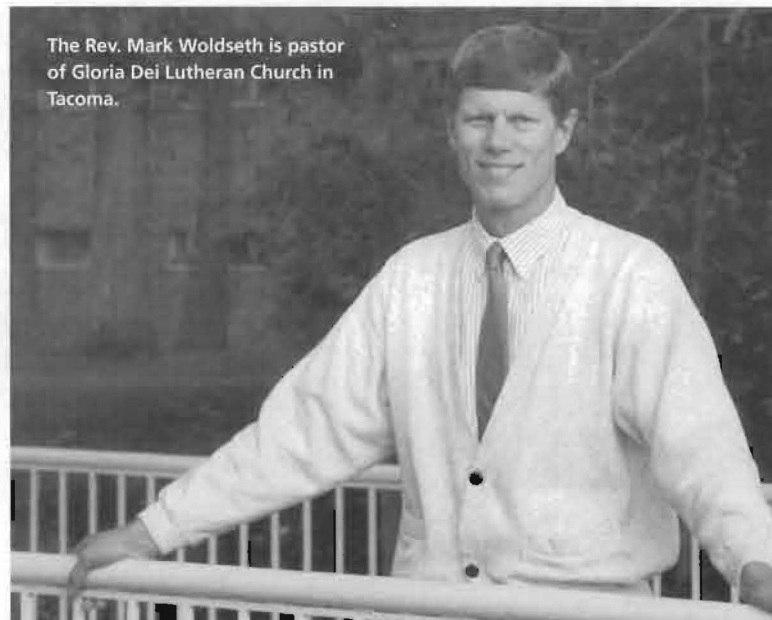
What she did learn was that solutions for environmental problems need to come from the country's own people, the ones who know the communities best. "It's almost arrogant to come in and say I can solve your problem," said Dorner, who is part Indian. "Solutions need to be formed directly from those who know the culture and are familiar with the situation."

Dorner also gained a better understanding of how different cultures interact with the environment.

"My experience in India gives me a better perspective on issues here. The way we do things in the Northwest is not the only way. There are many different ways of looking at a watershed and environmental issues, and how we interact with the environment."

Dorner grew up experiencing the mountains and beaches of the Northwest. She hopes to take what she learned in India and apply it to the Northwest and its particular environmental concerns, such as preserving native wildflowers, protecting wetlands and finding a balance between allowing development while not sacrificing the natural beauty of the land.

— Linda Elliott



Care for Others

There are no typical days in the life of a busy pastor.

Mark Woldseth '70, pastor of Gloria Dei Lutheran Church in Tacoma, usually welcomes the day with personal study and preparation for his many worship and teaching responsibilities. This quiet time gives him a strong foundation from which to meet the needs of those around him.

Besides caring for the diverse needs of a 200-plus-member congregation, Woldseth is also a husband and father of four children under the age of 12. Balancing the physical, emotional and spiritual needs of his family with those of his congregation isn't always easy.

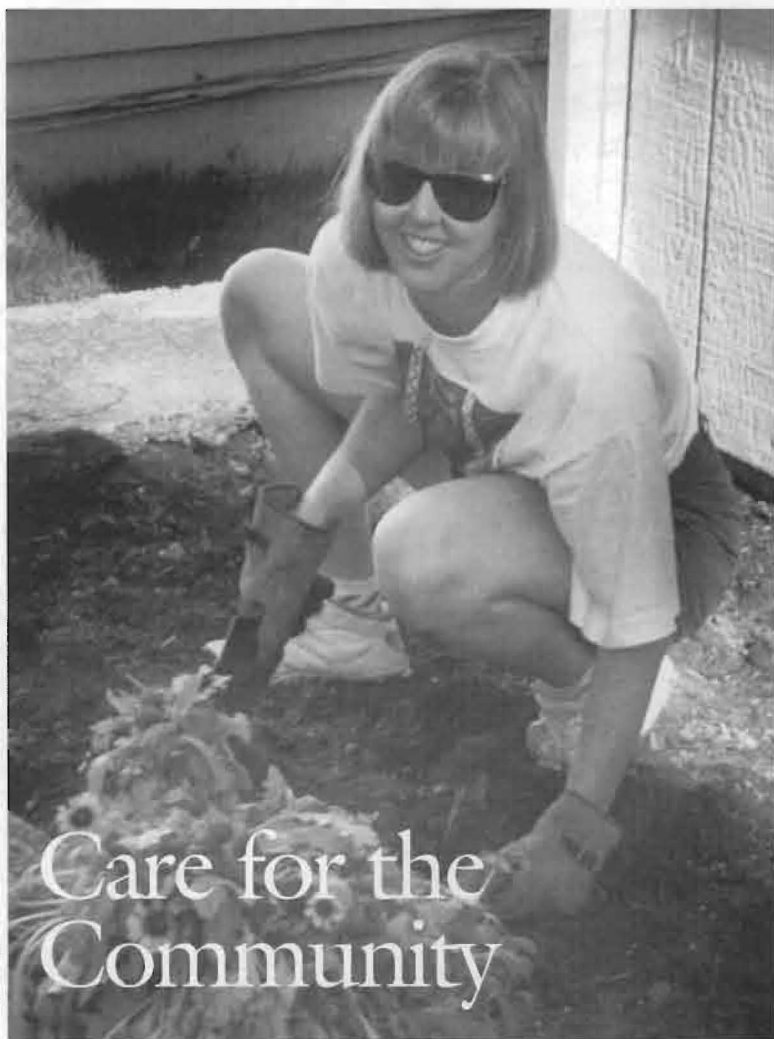
Woldseth — who majored in physical education at PLU and taught and coached for 10 years before becoming an ordained minister — credits PLU as being a significant part of his "faith foundation," a foundation from which he draws strength and character to better serve the people that count on him the most.

"I remember certain faculty members in the physical education department whose Christian character and personal example in their lifestyle were inspirational to me," he said.

Woldseth believes caregivers in America create a kind of infrastructure that has become indispensable to the smooth, day-to-day functioning of our society. "Caregivers form a network of support and service that makes a huge difference in the experience and quality of life for countless Americans," he said.

"As a fellow caregiver, I am proud to be a small but vital part of this extensive network which makes a significant contribution to the physical, emotional and spiritual health of our nation and world."

— Rebekah Ellis '96



RIGHT: Piper Peterson Lee '85 spearheaded a Homecoming weekend class reunion party with a community service twist. Members of the class of '85 were asked to help with yard work at the Mandela House in Tacoma.

From Central Africa to the Tacoma waterfront, Piper Peterson Lee '85 has cared for her community in the positions she has held.

After she graduated from PLU, Piper joined the Peace Corps and worked as a rural village health care coordinator for three villages in the Central African Republic. She trained midwives, taught first aid and instructed villagers in general sanitation practice. She made that community a healthier place.

Her current position is Superfund project manager with the U.S. Environmental Protection Agency. She has worked on every phase — from demolition to off-shore sediment analysis — of the former Asarco site in Ruston, a century-old copper smelter near Tacoma.

Piper has met with Ruston residents and assisted with soil sample testing and other projects. Her personal care for the Ruston community has become a professional model for the nation. The Asarco clean-up is viewed by the EPA as a pilot project for community participation.

— Janet Prichard

Parish Nurse Program Provides Caring Curriculum

Healing a person involves more than curing an illness. That's the idea behind the Parish Nurse Program, a cooperative effort by PLU and Northwest Parish Nurse Ministries, headquartered in Portland, Ore.

The program melds nursing and ministry with the goal of serving the whole person — mind, body and spirit. Parish nurses learn strategies for health management, and promoting wellness among their congregations. These strategies emphasize the interrelationship of spiritual, emotional, and physical health.

Parish nurses take many different roles depending on the needs of the congregation. One day they may teach seniors about cholesterol and perform health risk appraisals the next they may simply pray with someone in need.

"Parish nurses provide a unique form of (*continued page 11*)



Discover Whom You Serve

BY WILLIAM FOEGE '57

I like to come back to PLU because it was a great place 40 years ago. But in truth, it gets better with age. To return is always to relive one of the most exciting and important periods of my life. I classify myself as a "dionarap." That is "paranoid" spelled backwards. It's the belief that people are contriving to help me. That certainly happened at PLU. And I asked myself, "How could I have been so fortunate?" and then I immediately wonder, "Why isn't everyone?"

In the past two weeks, I've traveled in Africa trying to understand a civil war in Sudan where over a million people have been killed. I can't even fathom a number like that, but I know that this isn't a minor disagreement. That experience heavily mulls what I'm going to say tonight. My plan is to look at messages from that trip.

Recent Activities

When I was here eight years ago, I talked about the Guinea Worm Eradication program that we had started. A quick update: at that time, we had 3.5 million cases of Guinea worm a year, and this was a disease that kept people from going out to the fields. It kept children from going to school. Last year, with the exception of Sudan, where we can't get a good figure because of the civil war, the number had fallen from 3.5 million to only 100,000. We are on target to eradicate that disease.

In Africa, river blindness drives some people to suicide. People talk about it as being similar to poison ivy, 24 hours a day. But as the infection migrates across the eye, it causes scarring and blindness so that, in some villages, 50 percent of people will be blinded by the time they are in their 50s.

Then, in 1973, Merck Pharmaceutical developed a drug for heartworm in dogs. It's even more of a miracle drug for humans; you only have to give it once a year to prevent blindness. Merck asked if they gave it to us free, would we figure out a way to distribute it? We have and by 1991 we were giving this drug to three million people a year. By last year, to 11 million. This year we will give it to 13 million.

Mentorship

Steven Bering of Purdue University talks of education as the continuous stream of consciousness of humanity. To be educated is to participate in that conversation: to help solve problems, to understand the past, and to get an inkling of the future. But, to do even more than that, places like PLU have a burden to explain why, because when you have to explain why, you can never be so sure of things again.

Why study history? The reason isn't so you don't make mistakes in the future. We study history because it demonstrates that this is a cause-and-effect world.

If we are to be good ancestors, we are to think not in terms of five-year plans, but to think about the child who will be born 200 years from now. If we are the responsible stewards

the world requires, three mindsets will be needed, and PLU — a university based on faith traditions — is uniquely situated to provide the foundation.

1. We need a mindset that transcends geography and time, and understands interdependence. Ghandi once said, "We should seek interdependence with the same tenacity that we seek self-reliance." But most universities concentrate on self-reliance.
2. We need a mindset of equity, the belief that we should all share in the bounty of this world. It's an irony to me that so many, even deeply religious people, have become anti-government. And yet it's hard to find many examples of equity outside of government. That's the one institution that represents all of us. And yet this sense of all being equal in the sight of God is very much the teaching of the faith community.
3. We need a mindset that understands that all things are connected. Hairspray and ozone. Hamburgers and rain-forest. Health in Sudan and the gross national product in Tacoma. Faith groups have this view of unity and purpose. Ghandi once said, "People become what they believe themselves to be." And if we can get our students to believe that they are the protectors of the future, then that is what they will become. A university springing from a faith tradition serves as the interface between freedom and equality, generic solutions and individual concerns, technology and ethics, individual greed and social need.

Finally, yesterday I made my annual trip to my wife's class of 4-year-olds. I go in a white coat with a stethoscope and we talk about what happens when you get sick, and each year they have great questions. A few years ago a 4-year-old girl asked me, "Do doctors have bosses?" My answer to her was, "Good doctors do, their patients are their bosses."

And then some weeks later I had a chance at a workshop with UNICEF to tell this story and ask who are the bosses of UNICEF? The answer came back immediately: all the children of the world. The real answer is all the children of the world *and* every child who will ever be born in the future. With that perspective we do more than give vaccines.

So who are our bosses? If we are really the servants we claim to be, if we are serious about training PLU students for lives of service, then our bosses become those we serve, and that includes every person now alive or yet to be born.

What a great purpose for a great university.

Dr. Foegen is director of Global 2000 and former head and current fellow of the Carter Center in Atlanta, Georgia. This article is condensed from his May 1995 Q Club address.

QCLUB

The following individuals, churches and businesses have joined the Q Club or upgraded their membership from May 1 through October 23, 1995.

President's Circle (\$5000-9999/year)

David and Carolee Berntsen *

Senior Fellow (\$2400-4999/year)

David and Lynne Bangsund *
Central Lutheran, Anchorage *
Ella Mae Fenn *
Dennis and Linda Howard *
Jon Kvinsland *
Roger and Gerry Anne Sahlin
Erv and Nancy Severtson *

Fellow (\$1000-2399/year)

G. Michael Arnold
David Aubrey
Donna Brinkmeyer and Lance McAllister
Gordon and Mildred Dufseth
Robert Gomulkiewicz and Andrea Lairson *
Bob and Majorie Howard *
David and Patsy Johnson *
Ken and Catherine Laufmann
Thomas and Florence March
Peace Lutheran Church, Silvana *
Lester and Evelyn Peter
Zion Lutheran Church, Newberg, Ore *

Associate Fellow (\$480-999/year)

Hardis and Gladys Bakken
David and Patricia Berg *
Brian Bonner
Jim and Cris Capelli *
Jeff and Karen Duzenbery *
First Lutheran Church, Ketchikan
Vernell and Carol Hance *
Tom and Tyne Haukebo *
Roger and Joanne Hildahl *
Linda Hulbert
Carl and Sue Ellen Johnson *
Richard and Naomi Kraiger *
John and Louise Maakestad *
Bob Mortenson *
Philip and Thelma Nelson
Randal and Ila Shipley
Susan and Jeremy Stringer *

Member (\$240-479/year)

Chris Ancheta
James Bash
David Churness
Shelly Cox
Paula DeLong
Jeffrey and Laurel Dickason
David Dion
Scott and Julie Dunmire
Faith Lutheran Church, Shelton
Joseph and Lisa Ferraro *
Harold Gamble
Bob and Shirley Gettel
Kenneth Gibson
Tom and Linda Gilmer

Peter and Mary Ellen Gulrud
Mr. and Mrs. Frank Hanson
Mr. and Mrs. Robert Harkson
Charles and Christine Harris
Willie and Marion Heard
Kay Hirst
Marcia and Bill Holmer
Alan and Jean Holt
Anne Huffman *
Preston and Shirley Jones
Donald and Nancy Kruse
Shari Kym *
Julie Larson
Peter and Betty McLellan
Duane and Joan Melcher
Gary and Rebecca Miller
Erik Moen
Erling and Susan Molver
John and Ruth Nielsen
Ruth and Tom Nighswander
Pete and Lois Perry
Jack and Jan Praxel
Leon and Donna Reisberg
Bryan and Lisa Rybloom
John Rosenberg and Nancy Faaren
Kristin and Edward Running *
Gerald Schmeling
Paul and Barbara Senftleben
Laurie Soine
Jennifer Tada
Richard and Cheryl Walden
William and Emmy Lou Watson
Anneliese Weik
David Wick

Junior Member (\$120-239/year)

Todd and Heather Alexander
Mary Connors
Daniel and Danesha Gill
Elizabeth Goode
Tamara Grunhurd
Ann Huber
Rebecca Omland *
Kevin Powers and Jeanne Schneider-Powers
Barron and Elise Ramos
Andrea Rapp
Helge and Patricia Ronhovde
Christine Shubert and Marc Pisan
Erick Styve
Kylee Sutherlin
Christine Tinsley
Rick and Tracey Topel
Scott and Susan Van Beuge
Kali Walker
Kathryn Wyatt

* Increased from previous level
Q+ Signifies commitment to increase to next level in two years.

In Support of Excellence

Grants and Gifts of \$10,000 or More

May 1, 1995 - September 30, 1995

FROM	FOR (GRANT AUTHOR)	AMOUNT
Ed Ramsdale Estate	Endowment and Capital	\$1,121,973
Charles Anderson - The Anderson Foundation	Restricted - Endowed Scholarship Fund	\$ 90,000
M.J. Murdock Charitable Trust	Grant - Science Faculty Research Equipment (S. Tonn, P. Dolan, J. Lindbo, L. MacGinitie, D. Waldow)	\$ 55,000
Mary Burchak Estate	Restricted - Library Materials Acquisition	\$ 53,979
Evangelical Lutheran Church in America - National	Unrestricted - Churchwide Benevolence Support	\$ 49,356
Independent Colleges of Washington	Restricted, Unrestricted and Scholarships	\$ 35,851
Mike Jacobson Estate	Restricted - Endowed Scholarship	\$ 30,000
Washington Sea Grant Program	Public Grant (Art Gee)	\$ 27,801
US Dept. of Health and Human Services	Grant - Professional Nurse Traineeships (Cleo Pass)	\$ 25,899
Independent Colleges of Washington	Unrestricted and Scholarships	\$ 22,782
Pak Joe Chan	Restricted - Endowed Scholarship	\$ 20,000
HEC Board	Public Grant - After School Enrichment Mentoring Project (Oney Grandall)	\$ 19,184
The Boeing Company	Unrestricted Matching Gift	\$ 17,828
FIPSE (Central Missouri State University)	Public Grant (Joe McCann and Linda Gibson)	\$ 17,400
Wallace and Joan McKinney	Restricted - Capital	\$ 15,000
Lutheran Brotherhood	Unrestricted - IMPACT Matching	\$ 14,050
US Small Business Administration	Public Grant (Steve Barndt)	\$ 12,500
Richard and Kathleen Mueller	Unrestricted - Q Club	\$ 10,311
Fuchs Foundation	Restricted - Scholarships	\$ 10,000
WA State Council for Prevention of Child Abuse and Neglect	Public Grant (Merrily Allen and Jane Grassley)	\$ 10,000

Deferred Gifts of \$10,000 or More

May 1, 1995 - September 30, 1995

FROM	FOR/TO	CURRENT VALUE
Gerry and Linda Evanson	Restricted - Scholarship	\$1,000,000
Anonymous	Restricted - Endowment	\$ 800,000
Anne and Tyrnn Long	Restricted - Scholarship	\$ 500,000
Richard and Marcia Moe	Endowment	\$ 500,000
Donald and Kim Wilson	Unrestricted - Endowment	\$ 395,969
Anonymous	Endowment	\$ 275,000
Kris Ringdahl	Restricted - Endowment	\$ 185,000
Randal and Ila Shipley	Restricted - Endowed Scholarship	\$ 126,800
Powell Cone	Restricted - Endowed Scholarship	\$ 120,000
Anonymous	Restricted - Endowed Scholarship	\$ 100,000
Laura and Mark Polcyn	Unrestricted - Q Club and Endowment	\$ 100,000
Bob and Marge Howard	Unrestricted - Endowment	\$ 80,000
David and Carolee Berntsen	Unrestricted - Q Club	\$ 55,000
Koli Hartvigson	Endowment	\$ 45,000
David and Lorlie Steen	Unrestricted - Endowment	\$ 25,000
John Templin	Restricted - Endowed Scholarship	\$ 25,000
David Aubrey	Unrestricted - Endowment	\$ 25,000
Linda Hulbert	Restricted - Scholarship	\$ 20,000
Donald and Janet Reiman	Unrestricted - Endowment	\$ 20,000
Mr. and Mrs. F. Talmage Edman	Unrestricted - Endowment	\$ 10,000
David and Lynne Bangsund	Restricted - Endowment	Confidential
Pete and Joan Mattich	Restricted - Endowed Scholarship	Confidential
Erv and Nancy Severtson	Unrestricted - Endowment	Confidential
Jeft and Kathy Spere	Unrestricted - Endowment	Confidential

ENCORE

"ENTHRALLING"

said *The (Tacoma) News Tribune* about the Lagerquist Concert Hall in the new Mary Baker Russell Music Center. "The sound, like that of many European halls, is warmly burnished and gives the sensation of a much larger space," (*TNT*) and "Lagerquist turned out to be as handsome for the ear as it is for the eye," (*Seattle Post-Intelligencer*).

Hear the grand opening concert on a new compact disc and be a part of that magical weekend.

Order your CD today!
Call 1-800-727-5566

\$12.95 CD \$10.95 TAPE
Allow 6-8 weeks for delivery.

PLU

A FAMILY TRADITION



Kimberly's family, from left: her mother, Lisbeth Arne Lusk ('65-67), her grandfather, John "Al" Arne '36, her grandmother, Olga Hugo Arne '37, Kimberly Lusk '95, her great-aunt, Borghild Arne Totten '39, and her uncle, Karl "Skip" Arne '72.

Kimberly Lusk tried to avoid the PLU tradition in her family. Her grandparents — Al and Olga Arne, who met here in the late 1930s — five close family members and a few distant cousins graduated from PLU and expected Kimberly to follow suit.

A National Merit Scholar, Kimberly wanted to broaden her horizons. She set her sights on several other universities, including two Ivy League schools, but applied to PLU anyway. It turned out to be the best decision she made.

"In the end I was glad I chose PLU because the other schools just didn't feel right," said Kimberly, a senior communication major who is also editor of the student newspaper. "Growing up, PLU was given to me as what a university should be. The other schools I looked at didn't compare."

CONTINUE THE TRADITION

OFFICE OF ADMISSIONS • 206/535-7151 • 1-800-274-6758

Coalition Delivers Kick-start to Couch Potatoes

BY TONY EVANS

"All parts of the body which have a function, if used in moderation and exercised in labours in which each is accustomed, become thereby healthy, well-developed and age more slowly; but if unused and left idle they become liable to disease, defective in growth and age quickly." — HIPPOCRATES

Not much has changed in 2,400 years. Experts consistently prove exercise is more than good for us, it is necessary for a long and productive life. Yet Americans still aren't paying attention.

In an effort to kick-start the couch potato, three of the major health and fitness organizations in the country — the American Alliance for Health, Physical Education, Recreation and Dance, the American Heart Association and the American College of Sports Medicine — formed the National Coalition for Promoting Physical Activity.

These groups joined forces to establish a collaborative partnership among public, private and commercial organizations in an effort to address the role sedentary living contributes to premature disease death in the U.S.

Why is a physical activity coalition needed?

Too many Americans are still inactive:

21 percent of young people ages 12-19 are overweight. Instead of getting out and enjoying some physical activity, teens spend approximately 22 hours a week watching television and playing video/computer games. (National Health and Nutrition Examination Survey III)

Years of scientific research about physical activity have failed to motivate some people:

12 percent of all deaths in the U.S. result from lack of regular physical activity. (Journal of the American Medical Association, 1995)

Inactivity can have major consequences on health and the quality of life:

The American Heart Association labeled lack of exercise as the fourth major risk factor for coronary heart disease behind cigarette smoke, high blood pressure and high blood cholesterol.

Current trends are not good:

Between 1985 and 1990, exercise in all age groups declined by 10 percent. Furthermore, people who are active now are not active as frequently as they were prior to 1985. (American Demographics, 1993)

The physical activity coalition joins forces with a government-established program called Healthy People 2000. The program sets physical activity and fitness goals to be achieved by the year 2000.

Specifically, the coalition will advocate:

Health care reform: To include incentives from the insurance industry for people who live active, healthy lifestyles. Such incentives would be similar to non-smokers' discounts.

Financial incentives: To individuals who reduce their health risks by being physically active and to facilities or programs that effectively promote fitness among their members or employees.

Quality PE and health education programs in schools: To increase the number of states requiring students to take a specific amount of physical education in grades K-12. Only a few states now have such requirements.

Funding for federal agencies: To develop and implement programs that promote physical activity and healthy lifestyles and to fund research and training.

Healthy communities: To establish good communication and education programs that can help communities develop, implement and evaluate fitness programs for community residents.

The coalition will begin its communication campaign by developing a consistent and uncomplicated message about health and fitness that can be readily understood by Americans of all age groups. Currently our citizens are confused by the increasing number of fitness recommendations, organizations and messages

associated with physical activity and fitness. Many of these messages are contradictory.

How much is enough?

Research shows a little exercise is better than none at all. Steven N. Blair, director of epidemiology at the Institute for Aerobics Research in Dallas, Texas, suggests both low and moderate levels of exercise have been found to provide substantive protection from lifestyle diseases like cardiovascular disease. Blair's advice is to simply "get up, get out and move."

How are we doing at PLU with respect to addressing the objectives of Healthy People 2000? We are truly a campus on the move. On fields, tracks, courts, alleys, trails; and in pools, gyms and studios — PLU students, faculty and staff play, exercise, recreate and compete their way to developing a "sound mind in a sound body."

During any semester, about 60 percent of all students enroll in one of the many lifetime sports classes offered by the School of Physical Education. Intramural sports programs involve 65 percent of the student body, more than 600 students compete in 25 varsity and club sports, and countless numbers avail themselves of liberal recreation hours in the gym, fitness center, courts and swimming pool. Faculty and staff parallel similar activity patterns.

PLU has always recognized the need for a "sound mind in a sound body" and the positive role of physical education as part of a liberal arts education. Therefore, physical education courses are a general university requirement. We believe this will not only improve our students' well being, but will also help them lay the foundation for their lifelong health and fitness.



Tony Evans, Ph.D., has been an associate professor of physical education at PLU since 1988.

"Get up,
get out
and move."

— STEVEN BLAIR

Institute for Aerobics
Research

Parish Nursing *continued from page 8*



KEN DUNNIE

traditional health care," said Carolyn Schultz, nursing professor at PLU. "The Bible strongly emphasizes the importance of relationships for human health and wholeness. In other words, good health care involves the whole person." PLU has offered the Parish Nurse Program since 1993. It consists of two classes which cover assessing and setting up a nursing practice within a faith community. Also, the exploration of major theological concepts, assumptions and theories underlying

whole-person care are taught as well as prayer, client spirituality and the use of sacraments.

Editor's Note: Information from the June 1995 edition of The Metro Lutheran was used in this article.

— Erik Ryan '96

Brenda Anderson Recalls Days on Graham Kerr Show

BY LINDA ELLIOTT



Brenda (Bryant) Anderson '88 may not like to cook, but she can write a recipe in her sleep.

Anderson, now in sales for Microsoft, spent a year and a half as a personal assistant on "The Graham Kerr Show" in the early '90s. It was the first nationally syndicated show based in Seattle.

No cooking was involved on Anderson's part. From a computer terminal in the kitchen, she would observe Kerr as he cooked. She would write, edit and refine the recipes as he developed them. With the help of a small staff, they cooked two-to-three meals a day, running each recipe through a nutritional analysis program on the computer. Two months of research went into every month of filming.

And she always got to take home the leftovers. "It was wonderful food. He is a well-deserved chef," compliments Anderson, who lives in Pe Ell, Wash., with her husband, Randy, a teacher. "Graham is a wonderful man, incredibly intelligent and great to work with."

Anderson landed the job on a whim. Every Sunday she would save seats for Kerr and his wife, Trina, at Eastside Foursquare Church where they all attended. One day he offered her the job because he'd heard she knew "something about computers."

"He was aware I had no cooking experience," she said. "In fact, I don't think I had looked at a cookbook in my life." It turned out Kerr needed someone who could give a non-cook's perspective to the recipes in order to make them easy to understand. The result was Graham Kerr's "Smart Cooking," published in 1991 by Doubleday.

Anderson still doesn't like to cook. She admits to baking every now and then, but husband Randy prepares most of the day-to-day meals. "He's a much better cook than I am," she said with a laugh.

Two of Anderson's favorite recipes, originally published in "Smart Cooking," have been re-tested and updated for a new cookbook, "Graham Kerr's Best," due out in January by G.P. Putnam's Sons. Here's a sneak preview.

Veal Weyerhaeuser



This is an elegant dish that is cooked just before serving. Dijon mustard and fresh basil give it a sophisticated finish. **Time Estimate:** Hands-on, 30 minutes; unsupervised, 30 minutes; serves four.

Rice Pilaf

- 1 cup uncooked mixed rice (1/2 cup Lundberg mixed long grain rice, 1/4 cup pearl barley, 1/4 cup wild rice)
- 1 tsp light olive oil with a dash of toasted sesame oil
- 1 cup finely chopped onion
- 1 clove garlic, bashed, peeled and chopped
- 2 cups low-sodium veal or chicken stock
- 2 bay leaves
- 1 sprig of fresh parsley
- 1 sprig of fresh thyme
- 1 cup small fresh or frozen green peas
- 1 cup sliced fresh mushrooms

Preheat the oven to 375° F (190° C) Heat the oil in an ovenproof skillet and fry the onions and garlic until the onions

are translucent. Add the rice and stir until well coated. Add the stock and lay the herbs on top. Bake, uncovered, for 30 minutes. When done, remove the herbs, stir in the peas and the mushrooms and return to the oven to heat through, about 5 minutes.

Veal and Sauce

- 12 ounces (350 gm) boneless veal loin, trimmed of all visible fat
- 2 tps light olive oil with a dash of toasted sesame oil
- 1 green bell pepper, seeded, and cut into 1" (2.5 cm) strips
- 1 red bell pepper, seeded, and cut into 1" (2.5 cm) strips
- 1 yellow bell pepper, seeded, and cut into 1" (2.5 cm) strips
- 1 cup low-sodium veal or chicken stock
- 1 1/2 tpsps cornstarch
- 1/4 cup de-alcoholized dry white wine
- 1/4 cup evaporated skim milk
- 1/4 tsp freshly ground black pepper
- 1/4 tsp freshly ground sea salt
- 3 tpsps chopped fresh basil

Cut the veal, across the grain, into 20 evenly sized pieces, just over 1/4" (.75 cm) thick. Heat 1/2 tsp of oil in a large nonstick skillet and fry as many veal pieces as will cover the bottom of the pan for about 30 seconds on each side. Place the cooked veal on a plate and keep warm while cooking remaining pieces. Use 1/2 tsp of oil each time you start to brown more veal. You will be able to do 6 or 7 pieces each time.

Put the last 1/2 tsp of oil into the same skillet and fry the peppers for 1 minute. Add the veal stock and bring to a boil, scraping the meat residues off the bottom of the pan in order to blend all the flavors. Remove pan from heat.

Combine the cornstarch, wine, evaporated milk and Dijon mustard in a small bowl. Add to the pan with the peppers and stock and bring to a boil, stirring, to thicken. Add the browned meat and any accumulated juices and heat through. Season with the salt, pepper and 2 tpsps of basil.

To serve: Put 5 slices of veal on each dinner plate with the sauce ladled over the top. Sprinkle with the remaining chopped basil.

Nutritional profile per serving:

Calories — 447; calories from fat — 18%; fat — 9 gm or 14% daily value; saturated fat — 2 gm; sodium — 335 mg; cholesterol — 75 mg; carbohydrates — 62 gm; dietary fiber — 6 gm.

Side bar: In the old days, we looked for the whitest veal. Now we know the price of white veal is great suffering for the animal. The veal that is a reddish pink color is from animals that have received most of their nourishment from their mothers. They may have had a little grass or hay and, if they were confined at all, there was still enough room to romp and play.

This darker veal is high quality and definitely the one I choose. If you have any doubts about how the calf was raised, talk to your butcher.

Carrot Cake



This recipe is a perfect example of springboarding. It comes from an in-flight meal experienced by chef David Burke of "The River Cake" in New York City. He made changes to suit his special needs by making a hot, cream cheese soufflé topping. I subsequently made my own changes and added a spiced, creamy apple butter topping. I like to split the dish and serve half the cake with the topping and leave the rest for simple snacking. If you have 12 people to serve, just double the topping. **Time Estimate:** Hands-on, 45 minutes; unsupervised 40 minutes; serves 12.

Cake

- 1/2 cup raisins, preferably flame seedless
- 1 3/4 cups all-purpose flour
- 2/3 cup whole-wheat flour
- 2 tpsps baking soda
- 1 1/2 tpsps cinnamon
- 1 tsp allspice
- 1/2 tsp freshly ground nutmeg
- 1/8 tsp freshly ground sea salt
- 3/4 cup firmly packed brown sugar
- 3 tpsps light olive oil with a dash of toasted sesame oil
- 2 eggs
- 2/3 cup buttermilk
- 2 tpsps vanilla
- 1 1/2 cups coarsely shredded carrot
- 1 (8 oz or 225 g) can crushed, unsweetened pineapple

Put the raisins in a small bowl, cover with water and soak until soft and plump, about 10-15 minutes. Preheat the oven to 350° F (180° C). In a large bowl, combine the flours, baking soda, cinnamon, allspice, nutmeg and salt. Stir well and set aside.

In another large bowl, combine the brown sugar and oil. Add the eggs, one at a time, beating well with a wire whisk after each addition. Stir in the buttermilk and the vanilla. Stir in the flour mixture. Add the carrots, raisins and pineapple.

Lightly grease an ovenproof skillet or 11" round cake pan. Pour in the batter and shake to distribute evenly. Place the skillet on the middle rack of the oven and bake for 40 minutes. Turn out on a wire rack to cool.

Topping

In a small bowl, mix the following ingredients:

- 1/2 cup apple butter
- 2 tpsps pure maple syrup
- 1/2 cup strained yogurt

Put plain, non-fat yogurt (with no gelatin added) into a coffee filter within a strainer. Place the strainer over a bowl and let stand five hours or refrigerate overnight. The whey drains out, leaving you with a thick, creamy yogurt cheese.

To serve: Place a wedge of hot carrot cake with 3 tpsps of topping spooned over the top. Garnish with a sprig of fresh mint.

Alumni Board Convenes Fall Meeting

BY LAURALEE HAGEN '75, '78

Susan Stringer '76, president, led the annual fall meeting of the PLU Alumni Board Oct. 27-28.

The Board heard reports and received greetings from Jan Brazzell, vice president of Development and University Relations; Erv Severtson '55, vice president and dean of Student Life; Nikki Plaid, ASPLU president; Jim Zimmerman '72, president of PLUS Business; Linda Strand '67, president of the PLU Nursing Alumni Association and Lauralee Hagen, director of Alumni and Parent Relations.

Most of the time was spent in committee meetings. Highlights include:

ALUMNI SERVICES – Selected names and logos for the new PLU groups which will begin forming around the country. The program will be called CONNECTIONS.

The board took action on recommendations regarding travel tour opportunities, approving guidelines for PLU sponsored trips and voting to not support or endorse non-PLU sponsored trips. Other topics included the university's World Wide Web site (<http://www.plu.edu>), other communication strategies and the requests that PLU continue to work on coordinating its outreach efforts/calendar of events and ensuring that "volunteer groups" are aware of that calendar.

AWARDS AND NOMINATIONS – Established timelines, guidelines, etc., for the annual alumni award program and created a new alumni association award to be given on a regular basis to members of the PLU family who have contributed their time, talent and other gifts in meaningful ways. Began the process to call for nominations to the 1996-1997 Alumni Board, and approved funding for an additional committee meeting.

DEVELOPMENT AND PUBLIC RELATIONS – Members met with the other committees to assist in PR efforts. The majority of time was spent evaluating the Class Representative Program.

The committee will be the catalyst behind a Fall Recognition, Training and Development day for university volunteers and



CHRIS TUMBUSCH

boards. This event is scheduled for Sept. 13-15, 1996, and will include groups such as Alumni Admissions Ambassadors, the Alumni Board, Class Representatives, the Corporation Board, Parents Council, Q Club Directors and select university departments.

HOMECOMING – Debriefed and evaluated Homecoming 1995 and began making plans for 1996. Reunion years are '46, '51, '56, '61, '66, '71, '76, '81, '86, and '91. Homecoming 1996 will be Oct. 12-14. A special focus will be the 25th anniversary of the University Center and events honoring generations of student leaders.

STUDENT SERVICES – The LuteLink (career mentoring) program was evaluated. The current list of mentors was reviewed, looking for majors/careers not represented. Plans were made for an ad campaign to promote alumni programs, services, etc., to current students. Began planning for a possible alumni-sponsored spring event to honor seniors.

The highlight of the weekend was a dinner honoring recently-retired campus photographer Ken Dunmire and his wife Janette. Ken's 31 years of service to PLU was displayed through a photo collage of his work. Ken was then roasted and toasted by board members Dick Londgren '51, Jon Olson '62, Jim Hushagen '70, David Nesvig '57, Paul Hartman '67 and Lauralee Hagen '75, '78.

FIRST ROW: Nikki Plaid (ASPLU Pres.), David Rosdahl '89, Lauralee Hagen '75 (Director, Alumni & Parent Relations), Phyllis Grahn Carroll '55, Jim Morrell '91, Norene Gulhaugen '48, Becky Burad '74, Gayle Lindeblom '67, Marla Henderson (Assistant Director, Alumni & Parent Relations), Linda Strand '67 (Nursing Alumni Pres.), Helen "Topsy" Kylo '50, Dolores Woods '80, Ted Johnson '60, Prentis Johnson '78.

BACK ROW: Darren Kerbs '96 (Student Rep), Eric Jones '96 (Student Rep), Jon Grande '92, David Johnson '69, Jim Hushagen '70, Brian Olson '83 (President Elect), Dick Londgren '59, Jim Zimmerman '72 (PLUS Business Pres), Darren Hamby '89 & '92, Paul Hartman '67, David Coltom '83, Susan Stringer '76 (President), David Nesvig '57, Jon Olson '62 & '74, Paul Steen '54.

NOT PICTURED: Jon Dahlstrom '86, Leigh Erie '77.

Alumni Association Seeks Award Nominations

The PLU Alumni Association urges alumni, friends and students to submit names of persons to be considered for awards recognizing their contributions to society or the university.

DISTINGUISHED ALUMNUS/ALUMNA

Through years of preparation, experience, dedication, exemplary character and service has achieved professional or vocational distinction.

YOUR NOMINEE _____

OUTSTANDING ALUMNUS/ALUMNA

Beyond 15 years of graduation; distinguished in a special area of life.

YOUR NOMINEE _____

OUTSTANDING YOUNG ALUMNUS/ALUMNA

Less than 15 years since graduation; distinguished in a special area of life.

YOUR NOMINEE _____

HERITAGE AWARD

An alumni award for years of distinguished service to the university.

YOUR NOMINEE _____

SPECIAL RECOGNITION

An award for an alum or non-alum who has served the university in a unique or special way.

YOUR NOMINEE _____

YOUR NAME _____

ADDRESS _____

CITY/STATE/ZIP _____

PHONE _____

To be eligible for the 1996 awards, please have this form returned to the Alumni Office by March 1, 1996.
MAIL TO: Alumni Office, PLU, Tacoma, WA 98447; CALL 1-800-258-6758; or E-MAIL alumni@plu.edu.

Editor's note: The Alumni Annual Fund listing for the class of 1942 was omitted from the last edition of *Scene*. The * represents married Lutes and the Q represents Q Club.

CLASS OF 1942

Representative: Emmy Lou Watson
57% Participation
\$2,755 Total Gifts

- Marjorie P. (Cole) Brumfield
- Maxine J. (Rosenau) Davis
- Margaret (Jensen) Gangler
- Thelma (Thureson) Gilmur
- Florence M. (Hauge) Haakons Q
- Arthur O. Haavik
- Marv K. Harshman *Q
- Dorothy E. (Larson) Harshman *Q
- Ruth H. (Simonson) Hendrickson
- Ruth M.V. (Bengtson) Jackson
- Edith M. (Gustafson) Mc Daniel Q
- Nadine E. (Friedline) Mc Millan Q
- Lloyd H. Nelson
- Martin E. North Q
- Floy P. (Pearson) Olson
- Virginia I. (Hendrickson) Osman
- Deloris L. (Grubb) Pease Q
- Gloria M. (Rummer) Pederson *Q
- Margaret A. (Taylor) Stark
- Le Rae (Hamilton) Thomure
- Robert H. Thoren Q
- George C. Thorleifson
- Alice E. (Ford (Pflueger)) Tingstrom Q
- Marvin S. Tomniervik *Q
- Emmy Lou (Hoff) Watson Q

1953

Former PLU President **William Rieke**, along with three other distinguished graduates of Cashmere High School, are the first inductees into the school's "Wall of Fame." The Wall of Fame honors people who have graduated and gone on to be successful in their careers and communities.

1962

Lois (Abrahamson) Perry was included in "Who's Who in American Women" for the second time, and was also in the new edition of "Who's Who in Finance and Industry."

1965

Grace Schauer works for the Washington State Department of Social and Health Services as a day care licenser. She was honored as the 1995 Employee of the Year on May 22.

1967

Sandra Town Lytle's poetry appears in "The Symphony of Life," "Seasons of the Heart" and "The Tapestry of Life," books from the Salesian Collection, distributed worldwide. Her work is published alongside that of Longfellow, Holmes and Rice, among others. Sandra lives in Moscow, Idaho, and operates four antique booths called "Somewhere in Time."

1968

Linda Allen has a collection of songs called "God's Daughters" that she presents in concert and in a workshop that provides a look at the feminine face of God. The music offers a soundtrack for women trying to redefine their own spiritual heritage. **Dr. Penny Leake** of Decorah, Iowa, received the 1995 Distinguished Alumna award from the PLU School of Nursing Alumni Association. See box story this page.

1970

Julie (Taylor) Aageson was elected to the board of Augsburg Fortress Publishers in Minneapolis. The election took place at the ELCA Churchwide Assembly in August. Julie is a member of the synod staff for the Eastern North Dakota Synod and director of the ELCA Resource Center in Fargo, N.D. She and her husband, **Jim Aageson**, live in Moorhead, Minn., where Jim teaches New Testament and chairs the religion department at Concordia College. **Kay Hardy**, a science teacher at Timberline High School in Olympia,

Wash., was named Teacher of the Week in the Sept. 19 issue of *The Olympian*.

1971

Stephen Mangelsen of Ben Lomond, Calif., is the executive vice president/ chief financial officer of the Raytek Corporation. His wife, Teresa, is a student and homemaker taking care of 2-year-old Olivia.

1972

Brian Anderson was promoted to supervisor of maintenance services at the Madera Irrigation District. He is responsible for maintaining over 300 miles of open canals and 180 miles of closed conduit serving farmers in Madera County, Calif.

1974

Thomas Dodd and Gay Kramer-Dodd ('76) have moved to Eugene, Ore., where Tom has accepted the call as pastor of United Lutheran Church. They have two sons: 12-year-old Matthew and 8-year-old Patrick.

Marni Engh and her husband, Steve, live in Camarillo, Calif., with their three children. Their 18-year-old daughter, Anita, is a freshman at Brandeis University in Waltham, Mass. Ten-year-old Brian is a student at the school where Marni teaches science, and 16-year-old Eric is a sophomore in high school. Steve is a captain for the Los Angeles City Fire Department.

Chuck and Gay (Thompson '75) Mitchell have two children: 12-year-old Nate and 9-year-old Becky. Gay is teaching first grade at Willamette School in West Linn, Ore. She is also involved in art instruction and painting. Chuck is a lawyer in Oregon City and was recently selected as a member of the Million Dollar Advocates Forum whose membership is limited to trial lawyers who have achieved a verdict or settlement in the amount of \$1 million or more. He is also a director of the Clackamas County Historical Society. PLU friends can reach them at 1-800-542-3833 or 503-636-5133.

Donald Yoder is the new director of the Steilacoom Historical Museum Association.

1975

After nine years as a U.S. foreign service officer, **Susan Rose** resigned in 1994 and moved to Greece to marry her husband, Alan. They met in Brussels where she was at the U.S. embassy. Susan has been working with a modeling agency in Athens, but pregnancy has temporarily halted that career.

Larry Walsh and his wife, Gail, of Bellevue, Wash., were married on July 22. Gail is the president of Concept Communications. Larry is the band director at Federal Way High School.

1976

Steven Holian and his family moved to Riverside, Calif., in April. Steve is a consultant with Baxter I.V. Systems Division in Irvine, Calif., on flow issues and other projects. His wife, Tricia is teaching science to fifth and sixth graders part-time. Sarah is in the third grade. Joel is 4 years old.

1977

Rev. **Mark Peterson** was installed as the pastor of Pilgrim Lutheran Church in Othello, Wash., on Aug. 13. **Deborah (Zylstra) Skinner** published a second book, co-authored by Laura Moore. The book is a collection of art, history and menu style recipes relating to Whidbey Island, Wash. The book is titled "Seasons on Whidbey."

1978

Ruth Babcock and Paulette Bergh captured a gold medal in the Women's B pairs competition at the U.S. Rowing Masters Nationals in

Dr. Penny Leake Earns Alumna Award

Dr. Penny Leake of Decorah, Iowa, received the 1995 Distinguished Alumna award from the PLU School of Nursing Alumni Association.

Leake, Ph.D., is an associate professor and chair of the bachelor of science in nursing program at Allen College of Nursing in Waterloo, Iowa. In addition, she works with maternal-child health programs at the Winneshiek County Public Health Nursing Service in Decorah, and serves as a nursing consultant.

Dr. Leake is an accomplished author. Her publications include "Affirm Your Role as Caregiver," a resource book for home care patients and families, and the "Prenatal Teaching Guide," handbook for nurses. She has also written a number of articles for nursing journals and has made presentations on her research concerning home health care, maternity/child care options, and prenatal issues.

Dr. Leake earned a bachelor of science in nursing from PLU in 1968, a master's in human development and family ecology from Ohio University, and a doctorate in nursing from the University of Texas at Austin.

"We presented Dr. Leake with this award not only because she has reached the highest level of professional development, but because her service as a nurse touches so many different areas — giving care, teaching, mentoring and writing," said Judy Dickey-Skau, secretary of the PLU Nursing Alumni Association.

Dr. Leake received the award at the October Nursing Alumni Brunch at PLU's 1995 Homecoming celebration. On hand were numerous family members, including three siblings who are also PLU alums. From left, Sally Wallace '74, '78, Kathy Johnson '82, Dr. Penny Leake '68, and Jerry Johnson '85.



LINDA ELLIOTT

Wenatchee, Wash., over Labor Day weekend. They beat a San Diego tandem by more than four seconds. They were also part of the Minneapolis Rowing Club's B Fours team, which claimed a silver medal.

Dolores Biblarz is the vice president at Greater Lakes Mental Health Foundation of Tacoma, Wash.

Berit Bjercke Blikstad of Oslo, Norway, is partner and director of Navigator Marketing Solutions and Technical Support.

Douglas Wright has worked at Hanford for the past 14 years as a quality assurance and industrial safety auditor. **Cori (Johnson '81) Wright** worked for Horizon Air in Yakima, Wash., until their two boys were born. Now she works at home as an educational consultant for Discovery Toys. They would like to hear from other alums of '80. They can be reached by phone at 509-965-1289, fax at 509-965-1289 or e-mail at 201-4044@mcimail.com.

1981

Kevin Mabry and Kathy Waller-Mabry of Fort Collins, Colo., announce the birth of Cortney Heather on June 1. Cortney joins 3-year-old sister Callie Rose.

Mary (Boyd) Olson, of Boise, Idaho, was awarded her Ph.D. in adult education from the University of Idaho in May. The title of her dissertation was "Perceived Importance of Student Services: A Comparison of Traditional and Non-Traditional College Students' Perceptions."

Stephen Smith and his wife, Alicia, of Tacoma, Wash., announce the birth of Zachary on July 3. Zachary joins brothers Collin and Micah.

1982

Dr. Christopher Cock was named Valparaiso University's Frederick A. and Mazie N. Reddel Professor of Music and will serve as conductor of the Chorale and University Singers.

Gary Judd graduated from Seattle University Law School in December 1994, and passed the bar exam in May. He continues to work for Reliance Insurance. **Donna (Harland '81) Judd** is home with 8-year-old Christopher and 5-year-old Andrew and is very active in soccer and their school's PTA. **Kristin Kaden** of Portland, Ore., was promoted to account group manager at Waggener Edstrom, Inc. She is

responsible for public relations counsel for two divisions at Microsoft. Most recently she managed the broadcast media for the launch of Windows 95. She is an active member at St. Matthew Lutheran in Beaverton, Ore.

Jeff Walton is a fiber buyer with the Weyerhaeuser Company in Springfield, Ore.

1983

Melodee Evenson received her master's in education in creative arts and learning from Lesley College, in Cambridge, Mass., in May. She is in her ninth year teaching elementary music in Moses Lake, Wash.

Mari Ingvaldsen is in nursing school in Drammen, Norway.

Suzanne Johnson is the principal at Prosser Heights Elementary School in Prosser, Wash.

1984

Carolyn (Crawford) Brooks and her husband, of San Jose, Calif., announce the birth of Alexander on July 31, 1994. Alexander joins brother, Jake. Carolyn is in her fourth year as a mentor teacher.

Dawn Darby and her husband, Paul, of Kaiserslautern, Germany, announce the birth of Ashleigh Michelle on Sept. 1.

After teaching English for 2 1/2 years in Japan, **Andrew Kylo** is pursuing a master's degree in TESOL at Biola University, while teaching ESL in the English language program. Andy and his family plan to go to Macedonia as missionaries in 1997.

Eric Sorensen is a student at The Divinity School at the University of Chicago.

Linda (Ebeling) Spry and her husband, Gary, of Olathe, Kan., announce the birth of Lauren Nicole on May 11. Lauren joins 3 1/2-year-old brother, Patrick.

1985

Andrea (Watness) Dauterman and her husband, Dale, of Stockton, Calif., announce the birth of Grant Charles on May 19. He joins 2-year-old sister, Jamie.

Stacey Davis married Grant Nelson on July 1 at Central Lutheran Church in Bellingham, Wash. Stacey received her master's degree in special education from City University in June, and is a physical education teacher with

the Griffin School District in Olympia, Wash. Grant is a tennis professional in Olympia.

Doug and Jill (Johnson '89) Gardner, of Tacoma, Wash., announce the birth of Emily Jane on May 24.

Scott and Louise (McDonald) Higgins, of Virginia Beach, Va., announce the birth of Connor Harrington on April 16. Connor joins 4-year-old brother Andrew. Scott is an assistant production officer at the Public Works Center in Norfolk, Va.

Kurt Jacobson's advertising and public relations company of Jacobson, Ray, McLaughlin, Phillips celebrated 25 years of service to the business community in October.

Anita Parker, of Mt. Vernon, Wash., was promoted to president/CEO of Alpine Environmental, Inc. She is presently studying international business at Andrew Jackson University in a master of business administration program. She is also a Ph.D. candidate.

Ian and Marcia (Rose) Ritchie traveled to England in October where Ian read for a master's in archaeological heritage management. They both took a leave of absence from the U.S. Forest Service.

Chris and Sarah (Running) Slotten announce the birth of Kari Christiana on June 21. They moved to Poulsbo, Wash., in March. Chris is an engineer at Boeing. Sarah is a social worker at the University of Washington Medical Center.

Steve Weston and his wife, Evelyn, announce the birth of Benjamin Paul on June 3. Benjamin joins 2-year-old brother Samuel. Steve is beginning his third year as pastor of a rural parish in Northwestern Minnesota.

1986

Frank Alvern accepted the position of chief financial officer at Egmont Film A/S in Asker, Norway.

Deanna Benningfield and her husband, Thomas, of Federal Way, Wash., announce the birth of Haley Marie on Nov. 9, 1994.

Brian Dohe and his wife, Lori, of Walla Walla, Wash., announce the birth of Erik Karsten on Aug. 16. Brian completed a master's of education with a major in curriculum and instruction from Northwest Nazarene College in Nampa, Idaho, in May and is now employed at Whitman College in Walla Walla as the associate

director of residence life/conferences and events. Lori teaches Japanese and English at Walla Walla High School. **Elenore Long** was hired by Robert Morris College as an assistant professor of communications.

Julie (Gustafson) McGrath and her husband, Andy, of Enumclaw, Wash., announce the birth of Michelle Elizabeth on June 24. Michelle joins 2-year-old brother, Ryan. Julie is a teacher in the Enumclaw School District. Andy is a vice principal/athletic director in the Eatonville School District.

Marcus and Paula (Smith '88) Rieke of Maple Valley, Wash., announce the birth of Grant on May 24. Grant joins 3 1/2-year-old brother, Benjamin. Marc is the principal of Lakota Junior High School in Federal Way.

1 9 8 7

Shelley (Jackson) Bradley and her husband, Craig, of Auburn, Wash., announce the birth of McKenna Diane on Aug. 14. McKenna joins 5-year-old brother Matthew. Shelley is a preschool teacher at Happy Hearts Christian Preschool. Craig is a buyer with the Boeing Company.



Danelle Gonzalez of Seattle, Wash., was named general manager for acquiring new customers for the north district of Washington Natural Gas. She is a

member of the National Association of Female Executives, the National Burglar and Fire Alarm Association and the United States Volleyball Association.

Douglas Knight graduated from the department of orthodontics at the University of Washington in June. He has purchased an existing orthodontic practice in the Allenmore area of Tacoma, Wash.



Dr. Barth Merrill and his wife, Carmen, of Pensacola, Fla., announce the birth of Liana on July

28, 1994. Barth is a doctor with the Navy and was the recipient of the Richard E. Luehrs Operational Flight Surgeon of the Year award, the highest award given to flight surgeons.

Kim Sinclair of Brier, Wash., is working at Boeing as a programmer analyst. She is engaged to Corey Rainboth, who is also a Boeing employee.

Stacy Waterworth of Tacoma, Wash., was transferred to driver of Engine 4 with the Tacoma Fire Department.

1 9 8 8

Ase Bakken and her husband, Finn Hodt, of Drammen, Norway, announce the birth of twin girls, Ane and June on June 14.

Catherine Conklin married David Bentley on Aug. 5 at University Presbyterian Church in Seattle.

Catherine is a registered nurse with the Seattle-King County Public Health Department. David is a teacher at Mercer Island High School. **Kim Fowler** and her husband, Richard, of Richland, Wash., announce the birth of James Warren on July 5.

Jon and Shelley (Ondrasik) Kral, of Orlando, Fla., announce the birth of Jonah Ondrasik on June 14.

Brenda Ray, of Portland, Ore., accepted the position of development assistant with Self Enhancement, Inc. **Michelle Sanders** and her husband, Michael, of Bothell, Wash., announce the birth of Megan Anne on Sept. 11.

Jim Swenson works for KPFF, the engineering firm in Seattle responsible for the new mall in Auburn. Jim was assigned several projects, one of which was the Mt. Rainier entrance. **Gloria Williams**, of Columbia, Mo., announces the birth of Cecil

Nathaniel on May 28. Cecil joins 5-year-old sister Celia.

Renee Wischnofsky married Russ LeBlanc on July 15 at Trinity Lutheran Church in Seattle. Renee is a registered nurse at Providence Hospital in Seattle. Russ is employed by Key Bank.

1 9 8 9

Karen (Moore) Ash and her husband, Dean, of Tacoma, Wash., announce the birth of Logan Robert on July 16.

Janet Burt is an assistant principal in the Othello School District.

William Elton is teaching a fifth-grade class at Nyssa Elementary School in Oregon.

Stein Sveen Johnsgerd and Birthe Refstie Fennefoss ('90) were married on Aug. 20 in Kristiansand, Norway. Birthe received her master's in business administration from the University of Colorado at Boulder in 1991. She works for Saga Petroleum, a Norwegian oil company, as a project economist. Stein is working as an industry advisor in Norway's largest commercial bank.

Kris Kraiger married Lisa Loree on July 23, 1994, in Las Vegas, Nev. Kris is a combat rescue pilot with the U.S. Air Force. He has been reassigned to the 33rd Rescue Squadron at Kadena Air Base in Okinawa, Japan. They will be stationed there for three years.

Melissa Maxson and her husband, Peter, of Lynnwood, Wash., announce the birth of Callie McKennon on Sept. 18. They have recently returned to the Northwest from North Carolina and are loving it.

Brenlan and Kelly Rorem, of Renton, Wash., announce the birth of Kathryn Anna on Sept. 20.

Lisle Slichko became certified in maternal newborn nursing in December 1994. She and her husband have relocated to the Tacoma area.

Beth Swenson married Salvatore Romeo on July 4 in Seattle. Beth is a charge nurse at Swedish Medical Center. Salvatore is the owner of Crown Jewels.

'92 and David Benson '94. They moved in July to Boston where Erik began the master's in business administration program at Harvard Business School. Jenny works for Prentice Hall as a production editor of college humanities textbooks.

Daniel Cooper married Meredith Dunn on July 22 at the Bayfront Center in St. Petersburg, Fla. Meredith is a reporter for the *Gazette-Times* in Corvallis, Ore. Daniel is earning his master's degree in physics at Oregon State University. They have changed both of their last names to Larson, an old family name.

Annamarie Deschamps married Kristian Harness on July 1 in Wenatchee, Wash. Annamarie received her master's in science in physical therapy from Columbia University in 1994 and is a physical therapist at Seattle ProSports Therapy. Kristian is vice-president of marketing and sales for SynApps Software, Inc.

Jeannine Erickson was promoted to assistant audit manager of Team King County of the Washington State Auditor's Office.

Tanya Fretheim married Veli Gul on June 2 in Istanbul, Turkey. Tanya is a graphic designer. Veli is a technical building engineer. The couple lives in Chicago.

Kelsey Hildahl of Seattle received a master's in counseling psychology from Antioch University in Seattle. She is working as a mental health specialist at Group Health Cooperative.

Knut Olson, of Tacoma, Wash., earned the National Quality Award from the National Association of Life Underwriters. This award honors those in the insurance business who write a minimum of 25 policies and who achieve 90 percent persistency for a minimum of 13 months.

Barbara (Gibson) Posthumus and her husband, Lars, of Redmond, Wash., announce the birth of Anna Nicole on Oct. 4. Barbara is the budget coordinator for the Lake Washington School District. Lars is an operations manager for Transport Logistics.

merce. The couple lives in Gig Harbor, Wash.

Arne and AnnMarie (Haroldson) Valdez of Federal Way, Wash., announce the birth of Alec John on Aug. 9. Arne is a sales representative for Burkhardt Dental Supply in Tacoma, Wash.

Michael Welk and Lisette Gonter-Welk ('93) of Gig Harbor, Wash., announce the birth of Jacob Michael on Sept. 14. Mike is employed by Key Trust Company as a portfolio manager. Lisette is a registered nurse at Mary Bridge Children's Hospital and Tacoma General Hospital.

Matt White is teaching at Hudtloff Jr. High in the Clover Park School District and coaches girl's soccer and track at Clover Park High School.

Sharon White ('91) is in her fifth year teaching third and fourth grade special education at Fruitland Elementary School in Puyallup, Wash.

1 9 9 1

Heidi Berger is a newswriter/producer for KING 5 News at KING-TV in Seattle.

Susan Brown of Puyallup, Wash., received a special recognition award/surplus review team member in September. This award was given for team efforts to provide a basis for a smooth transition to the new manufacturing resource management system at Boeing.

Jodi (Nygren) Coffey, of Fox Island, Wash., began her new job as a writer/media relations coordinator for Pierce County Medical Bureau, Inc. in August.

Kelly Crosslin married Chris Frere on Aug. 12 at Northwood Hall in Bellingham, Wash. Kelly is a personnel administrator at Sash & Door. Chris owns and manages the Bogey Bar and Grill in Bellingham.

Mark Eager married Kristi Corcoran on June 17 at Redmond Assembly of God in Redmond, Wash. Kristi is a teacher. Mark is a physicist.

David Halen married Kari Stenersen on Aug. 5 at Bethany Lutheran Church. David is a senior loan officer

Richard Malsch, of Bellevue, Wash., joined CompuServe's SPRY/Internet division as a software test and automation engineer. His wife, Shana, is a human resource assistant for Eddie Bauer.

Julie Odland married Marshall Smith on Aug. 26 in Minneapolis. Julie is a book editor with Fairview Press. Marshall is a mental health counselor. They live with their cat, Tess, in South Minneapolis.

Laura Rush married Jonathan Arthur on Aug. 19 in Alstead, N.H. She is attending Northeastern University in Boston to receive her master's degree in college student development. Jonathan is a consultant for West Publishing.

Laura Searl married Todd Landstad on May 20 at Van Orsdel United Methodist Church in Havre, Mont. They live in Redmond, Wash., where they are both employed by Microsoft.

Susan Witter married Michael O'Leary at sunset on Aug. 1 on the beach in Maui, Hawaii. The couple lives in Seattle.

1 9 9 2

Paul Anderson graduated from Purdue with a master's of science in chemistry. He is a chemistry instructor at College of Lake County in Grayslake, Ill.

Terry Buchanan and Sonja Knudson ('91) were married on Sept. 3 in Bellevue, Wash. Sonja is a third grade teacher with Shoreline School District. Terry finished a master's degree in economics at the University of Colorado at Boulder.

Eric and Kyann (Johnson '95) DeJong were married at Bethany Covenant Church in Mount Vernon, Wash. Kyann is employed by Best S.E.I.F. Eric is a teacher at Sedro-Woolley High School.

Karen Deveney, of St. Louis Park, Minn., was promoted to lead physical therapist in acute care for Abbott-Northwestern Hospital in Minneapolis in August.

Darin Hilliker is a consultant in the Seattle office of Andersen Consulting.

1 9 9 5 - 1 9 9 6 A L U M N I A D M I S S I O N S A M B A S S A D O R S



The Alumni Admissions Ambassadors came to campus on Sept. 8 for a one-day training workshop. This year there are ambassadors in 33 geographic locations. They assist the Admissions Office with college fairs, meetings and phone calling.

BACK ROW: Jeff Chandler '83, Dave Bauer '90, Loren Bengston '90, Kent Tuohino '80, Molly Uhlenhoff '93, Deb Erickson '82, Kirk Wait-Molyneaux '85, Alan Herr '92.

MIDDLE ROW: Dean Pinto '86, Darren Hamby '87, Lisa Backlund '91, Gail Lindquist, Sandy (Besel) Nelson '85, Karen Herr '92.

FRONT ROW: MaryLouise Jones '91, Scott Friedman '93, Chris Tye '91, Melissa O'Neil Perdue '91, Heidi Dippe '94, Jane Stewart '90, Sylvia Olson '84, Nancy Thorson '93, Peggy Lochmann '83, Lisa Manning '91. Not pictured: David Chun '84, Robin Warsinske '79, Linda Van Beek '82, Greg Thorwald '88, Mike Florian '78, Paul '90 and Julie '91 Finley, Sharon Finley, Jon '89 and Nancy '88 Edmonds, Jon '91 and Kari '90 Brendefur.

Svein Erik Tverli moved to Oslo, Norway, and is working as controller at Aftenposten, Norway's second largest newspaper.

Katrina (Neely) Wreggit is continuing to recover from the Murrah Federal Building bombing in Oklahoma City. She was in the building that day and injured. Physically she is better, except for some trouble with dizziness. She will undergo plastic surgery in a couple of months. She returned to work part-time in June and has steadily increased her hours. She lost 16 co-workers in the blast.

1 9 9 0

Erik and Jenny (Moss '91) Benson were married on Jan. 7 in Coeur d'Alene, Idaho. PLU alums in the wedding party included: **Mark Kurtz '90, Erica Moore '91, Bryan Benson**

Alison (Whitney) Shane was ordained by the ELCA on Oct. 1. She has accepted a call to serve as assistant pastor of First Lutheran Church in Ottumwa, Iowa.

John Skibiell is one of two dentists working at the newly-opened Othello Family Dental Center aimed at low-income patients.

Michele Toppe married Daryl Freier on July 24, 1993, at Elc Cove Vineyard in Oregon. Daryl is a graphic designer for Nike. Michele assumed the position of new student orientation coordinator for Portland State University on April 1.

Fred Underwood married Jan Ecklund on Aug. 12 at University Place Presbyterian Church in Tacoma, Wash. Fred is employed at Key Bank of Washington. Jan is employed at Greater Seattle Chamber of Com-

with Continental Mortgage. Kari is attending the Seattle University School of Law.

Paula-Noel Hibbard was accepted at the California Institute of Integral Studies in the "Recovery of Indigenous Mind" Ph.D. program in San Francisco. She will continue to live in Portland, Ore., working on the Internet and traveling to complete her studies. She will be traveling to and studying indigenous cultures in the Yucatan in Mexico, Peru and Norway within the next year.

Benjamin Maier and Lisu Cornell ('90) of Edmonds, Wash., announce the birth of Mackenzie Layn Cornell-Maier on April 24. Lisa is a geriatric social worker at Columbia Lutheran Home in Seattle. Benjamin works with quality control at CellPro in Bothell, Wash.

Susan Hinderer is spending a year in Chile as a Fulbright Scholar. She is teaching English to Spanish-speaking students at Kingston College in Concepcion, located just south of Santiago. (see story page 5)

Steven Johansen married Cindy Davison on July 28 at Our Saviour's Lutheran Church. Cindy is a special education teacher in Mount Vernon, Wash. Steven is a safety director at Diamond B Constructors in Bellingham, Wash. The couple will live in Deming, Wash.

Kyle Kupp married Kendra Hereth on July 8 at First Presbyterian Church in Yakima, Wash. Kyle is a case manager for Central Washington Comprehensive Mental Health.

Douglas Pennington married Christine Moor on July 22 at Foothills Baptist Church. Douglas is a

ALUMNI PROFILE

PLU Alums Celebrate 10 Years at Shakespeare Festival



COURTESY OF JULIA POMERENK

Road trip! A group of PLU alums from the 1980s trek to Ashland, Ore., every August for the Oregon Shakespeare Festival. They come from as close as Seattle to as far away as San Francisco, and last summer's trip marked their 10th venture.

The group calls itself "Just Us" (the name comes from an off-hand remark during a backstage tour) and has grown from 10 to about 25 alums, their spouses and now their kids. Three years ago they started keeping a journal of each trip with photos, playbills, memories and more. Over the years they've gone from staying up all night playing cards to swapping tips for removing baby food stains, observed Julie Pomerenk, who along with Karen Weathermon (both '83), put together the journal.

"We couldn't now separate how much of the attraction for the Just Us trip each August is the place itself, the plays themselves or ourselves," said Julie.

Some collective memories from the group include playing hackey-sack at each rest area on I-5 from Seattle to Ashland, driving into the countryside at midnight to watch a meteor shower, "King Lear" with Denis Arndt, seeing actors on the streets of Ashland, "Quality Theatre in a Christian Context," and spending time laughing and catching up with great friends.

Pictured here on the '95 trip from left to right are: Front row: Megan Voogd on mom Nancy (Thiel) Voogd's '84 lap, Mark Voogd, Mike Boozer '84 (standing) with Kyle Voogd in his arms, Second row: Leslie (Clark) Edgerton and Rick Brauen '85, '92. Third row: Anne Hafer and Mike Floodin '83. Back row: Charles "Trip" Edgerton III '84 and Julie Pomerenk '83.

Others in the group have included Stacy (Waddell) Carlson and Steve Carlson, both '83, Anneliese Kraiger '91, Cyndee Kraiger '84 and husband Randy Olson '83, Debbie Luckett Lenhardt, Jaye McGee '83, Steve Natwick '82, Dave Nelson '83, Kathleen (Burk) North '86 and Rick North, Eric Ofstun '83 (died Nov. '94), Piper Peterson Lee '85, Janet Reed '84, Kaaren Roe '82, '89, Mary Roe '81 and husband Ralph Minor, and Karen Weathermon '83.

Eric and Bonnie Jensen have moved to Portland, Ore., from Singapore, where they had been working as currency traders.

Adam and Barbara Johnson, of Nampa, Idaho, were married on June 25, 1994, in Boise, Idaho. Adam is a probe engineer at Micron Technology Inc. Barbara is a homemaker.

Melanie Kasting returned from a year teaching missionary children in Kenya. She lives in Sequim, Wash., and works as a math lab instructor.

Kelly McDonald, of Lawrence, Kan., is a graduate teaching and research assistant at the University of Kansas.

David Nelson is proud to announce the opening of Hot Mama's Pizza. He is the owner of the business located on Capitol Hill in Seattle. All PLU alums are welcome.

Dan and Jennifer (Kreger) Nickel, of Seattle, were married on June 24 at Calvary Lutheran Church in Stayton, Ore. The Rev. **Don Cornell '58** assisted Dan's father in the ceremony. PLU alums in the wedding party included **John McGoldrick '94**, **Kristina Kurlle '93**, **Joy (Nickel) '90**, **Gehlen** and **Scott Sypher '93**. Jennifer is a social worker for the state of Washington. Dan is a biologist.

Jeff and Britt (Miller '95) Scott were married on Sept. 2 in Spokane, Wash. **Harry Shapiro**, of Tacoma, Wash., was named director of operational performance for Washington Natural Gas.

On Sept. 6, **Sarah Sigler** of Columbia Falls, Mont., and 46 other volunteers left for a year of teaching English in Ecuador through WorldTeach, a private, non-profit organization based at Harvard University. Sarah majored in psychology.

Karyn Swiackey married Jeff Gould on Aug. 5 at Sacred Heart Catholic Church in Bellingham, Wash. Karyn is a graphic arts assistant at Grizzly Imports. Jeff is the personnel director for Whatcom Electric Company. They bought a house and are enjoying their new puppy, Tucker.

William "Toby" and Kirstan (Leatha '94) Tobin were married on Aug. 27, 1994, in Spokane, Wash. Toby works in customer service for Boise Cascade Office Products. Kirstan is a staffing specialist with Volt Services Group. They bought a home in Maple Valley, Wash., in July.

Anders and Johanna Trewe of Gothenburg, Sweden, announce the birth of Johan Daniel on July 14. Johanna received her master's of science in biology at Linköping Technical Institute, U of L, Sweden in June, 1994. Anders finished a bachelor of science in business administration at University of Gothenburg Business School in January. That same month he started at Linne Data Consulting as a junior systems engineer.

1994

Joel Aoesved married Laura Templeton on July 22 at Pioneer United Methodist Church in Walla Walla, Wash. Joel is a graduate student at Boston University. Laura is a substitute teacher in the Salem, Mass., area schools.

Kelly Burk, of Bellevue, Wash., joined Rural Health Financial Services as an associate on Aug. 1. The firm provides financial consulting services to health care providers in Washington, Oregon, Idaho, Montana and Alaska.

para-underwriter at Sunset Life Insurance. Christine is a teacher at Holy Family School.

Laurinda Plank is a student at the Graduate School of Gerontology at Baylor University. She would love to hear from anyone from social work classes, her email address is laurinda_plank@baylor.edu.

Jason Rose was promoted to 2nd Lt. in the Air Force after graduate school, and ROTC financial management officer at Shephard Air Force Base. He received the appointment after two years at Baylor University in ROTC training with a public policy administration degree at the master's level. He is engaged to marry **Laurinda Plank** in October 1996.

Jeff Stepanian is working as a physical therapy aid at Providence Hospital. He is in the skilled nursing unit working with knee and hip replacement patients.

1993

Kristan Ashbridge married Tyler Ashbridge on July 21 at University Presbyterian Church in Seattle. Kristan is a fitness instructor. Tyler is a teacher.

Chad Bentsen married Kristen Allen on July 15 at Cross of Christ Lutheran Church in Bellevue, Wash. Chad is attending the University of Washington School of Medicine. Kristen is an English and drama teacher at Inglesmoor High School.

S. Scott Burkhalter is studying at Chapman University School of Law in Anaheim, Calif. His wife, Merika, is a teacher's assistant at a Christian Montessori school in Orange, Calif.

Jennifer Clark is in her first year of law school at California Western School of Law in San Diego.

Drew Corrigan was promoted to senior within the audit and business advisory practice of the Seattle office of Arthur Andersen & Company.

Tim and Jennifer Irwin, of Tukwila, Wash., were married on Aug. 14, 1993, in Tacoma, Wash. Tim is a software engineer at Interling Software Corp., a mortgage software company. Jennifer is a programmer/analyst at Weyerhaeuser.

PLU Alumni are doing great things... What's new with YOU?



NAME _____ CLASS OF _____

SPOUSE _____ ALUMNUS? IF YES, CLASS OF _____

ADDRESS _____ WORK PHONE () _____
street city state zip

HOME PHONE () _____ IS THIS A NEW ADDRESS? YES NO MAILING LABEL NUMBER _____

BIRTH: CHILD'S NAME _____ M F BIRTH DATE _____

SIBLINGS, AGES _____

DEATH: NAME _____ DATE OF DEATH _____ AGE _____

SPOUSE, IF SURVIVING _____ YEAR, IF ALUMNUS _____

MARRIAGE: DATE/PLACE OF MARRIAGE _____ (No engagements, please)

OCCUPATION: WIFE _____ HUSBAND _____

PROMOTIONS/AWARDS: NAME _____

TITLE OF POSITION/COMPANY/AWARD/DATE ASSUMED _____

OTHER NEWS: _____

Deadline for the next *Pacific Lutheran Scene* is: January 29

Photos are welcome (preferably B&W) and will be used on a space-available basis.

MAIL TO: Alumni and Parent Relations Office, PLU, Tacoma, WA 98447-0003; FAX TO: 206/535-8555; or E-MAIL TO: alumni@PLU.edu

Susanne Buti married Jeffrey Hill on June 17 at Spanaway Assembly of God Church in Spanaway, Wash. Susanne is a public relations associate at Sierra On-Line in Bellevue, Wash. Jeffrey is the warehouse manager at Premdor Corporation in Kent, Wash.

Stacy Cantrell completed Air Force basic training at Lackland Air Force Base, Texas.

Thomas and Jennifer (Rick '93) Ferguson were married on Aug. 6, 1994, on Bainbridge Island, Wash. Jennifer is working on her Ph.D. in justice studies at Arizona State University. Thomas is a police officer in Phoenix.

Tracy Fox married Jay Hansen on Aug. 5 at Pilgrim Lutheran Church in Puyallup, Wash. Jay is working on a pharmacy degree at Washington State University.

Curt Keller, of West Linn, Ore., returned from spending the year after graduation in Ecuador, South America. He was working at a missionary radio station and helping with many events with the people of the country and different local churches.

Danielle Sterling Parks passed the Human Resource Certification Institute's Professional in Human Resources exam. She works for Parametrix Inc., an engineering and environmental sciences consulting firm in Sumner, Wash.

Tracy Perry played Gabey in the Issaquah Village Theatre (Wash.) production of "On the Town" in Oct.

Scott and Becka (Wilson) Thompson of Eugene, Ore., were married on Jan. 28 at Parkland First Baptist Church in Tacoma, Wash. Scott passed the November 1994 CPA exam and is a customer service representative at Sherman Brothers Trucking. Becka is substitute teaching and a tutor at Sylvan Learning Center.

Kimberly Williams married Daniel Sparrell on July 1 in Steilacoom's Pioneer Park. Kimberly works at Mervyn's in Lakewood, Wash. Daniel is a PLU student working toward a communication degree with an emphasis in broadcasting.

1995

Sarah Danko left July 4 for the Republic of Gabon, Africa, where she will teach secondary math as a Peace Corps volunteer for the next two years.

Sarah Hatfield accepted a position with the Puyallup School District where she is teaching classes in senior health education and sophomore speech at Rogers High School.

Jason Thiel was honored as a 1994 National Association of Intercollegiate Athletics Division II All-American on Aug. 12 at the Astoria Regatta parade in Astoria, Ore.

IN MEMORIAM

1938

Donald Abner died on Aug. 14 at Cottesmore Nursing Home in Gig Harbor, Wash.

Arne Strand died on Dec. 5, 1994, at the age of 78.

1948

Harriett Root Norem died on May 8 in her home at Friday Harbor after a long battle with cancer.

1957

Gerald Farmer died on Sept. 3 at the age of 60.

1962

Judy Andrews died on Aug. 7 at the age of 55.

1963

Rev. Philip Hult died in Santa Cruz, Calif., on Aug. 30 of malignant melanoma.

Lyla McClain died on Aug. 21 at Heartwood Care Center in Tacoma, Wash.

1965

Elaine Newton of Puyallup, Wash., died on Jan. 27.

1970

Kathleen Emerson of Pullman, Wash., died of cancer on April 21.

1974

Gary Strong of Billings, Mont., died on April 24 of leukemia.

1975

Dr. Ronald Stephens died Sept. 24 at the age of 50. After struggling with the HIV virus for nearly a decade, Ron made the decision this summer to cease further medical treatment for AIDS.

1986

Elisabeth Caprara died on Aug. 14 at the age of 31 after a long battle with leukemia.

1991

Teresa Yerbich died on Aug. 24 at the age of 32.

1996 ALUMNI COLLEGE

Experience Alaska



Come aboard Holland America's ms Ryndam, and join PLU alumni, parents, faculty, staff and friends for an unforgettable week. The PLU faculty will be prepared to engage your mind and satisfy your thirst for knowledge. In addition to your time spent in the floating classroom, you will cruise Alaska's inside passage and famous glacier route.

**We set sail May 26, 1996.
You won't want to be left behind!**

FOR MORE INFORMATION, CALL 1-800-258-6758



Holland America Line

A TRADITION OF EXCELLENCE*

Prices start at \$1,124* per person, 3rd and 4th passenger rate discounted.
Deposit of \$350 per person due upon booking.

*Price based on double occupancy. Air add-on to Anchorage and port charges are additional.

ALUMNI PROFILE

Mbango Lands Job With Namibian Broadcasting Corporation



Lahja Mbango '94 came to PLU from her native country of Namibia to study law. It was an opportunity unavailable at home because Namibia — struggling for independence and ruled by apartheid — did not allow black students to attend universities.

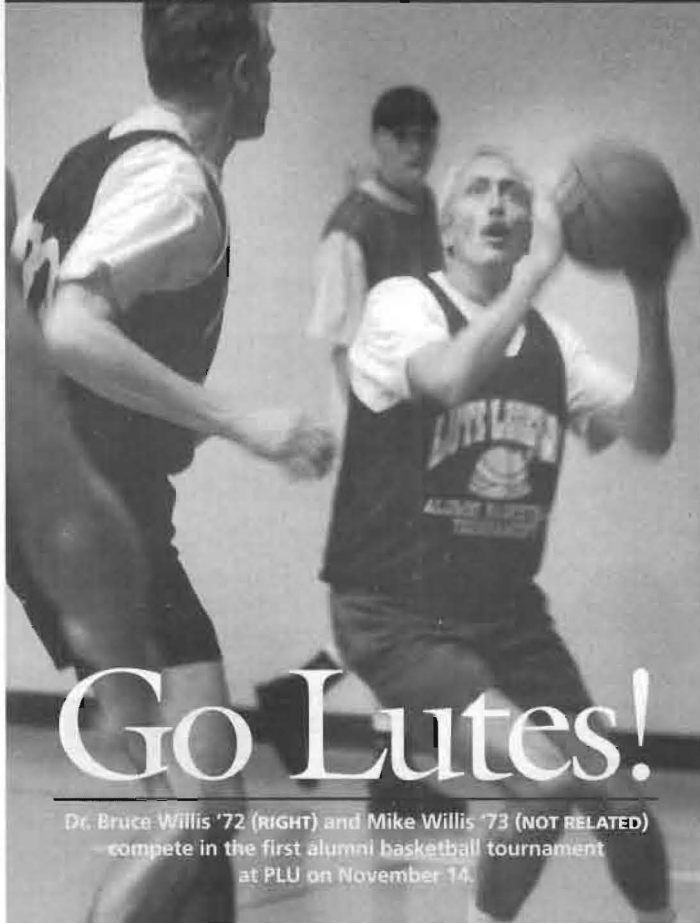
Once she began studying, though, her focus changed to journalism. "I found media so fascinating, so I decided to follow that field," she said.

Mbango is featured in the fall 1995 edition of *Mosaic*, a video magazine produced quarterly by the Evangelical Lutheran Church of America.

Now Mbango is back in her native Namibia putting her education to work as a reporter for the Namibian Broadcasting Corporation.

Scholarships generated by the support of individuals, ELCA colleges and universities, and church partners in Germany have enabled over 100 Namibians to attend ELCA colleges in the U.S. since 1988.

ALUMNI REUNION



Go Lutes!

Dr. Bruce Willis '72 (RIGHT) and Mike Willis '73 (NOT RELATED) compete in the first alumni basketball tournament at PLU on November 14.

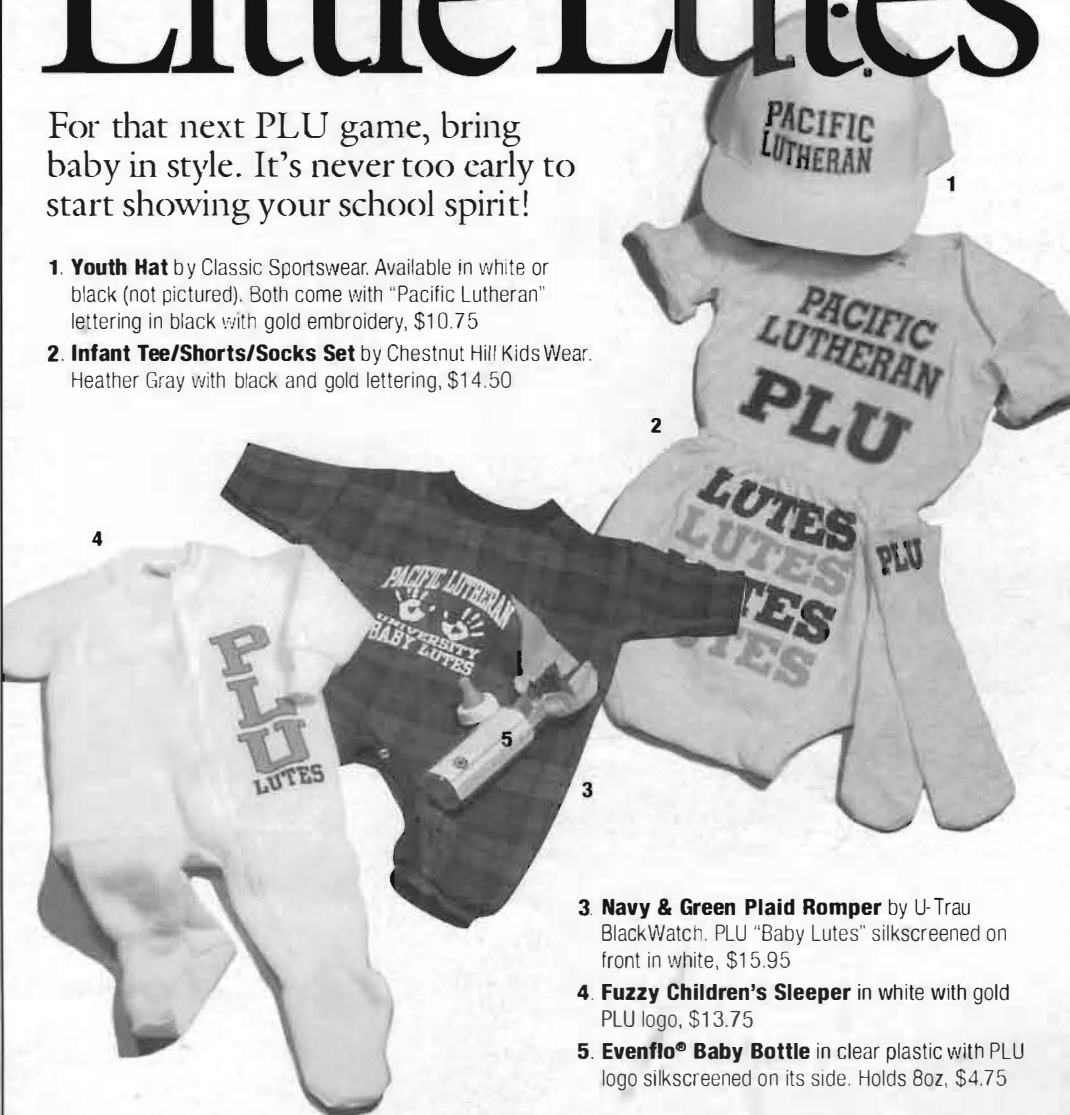
BRIAN ZAGAR '99

Little Lutes

For that next PLU game, bring baby in style. It's never too early to start showing your school spirit!

1. Youth Hat by Classic Sportswear. Available in white or black (not pictured). Both come with "Pacific Lutheran" lettering in black with gold embroidery, \$10.75

2. Infant Tee/Shorts/Socks Set by Chestnut Hill Kids Wear. Heather Gray with black and gold lettering, \$14.50



3. Navy & Green Plaid Romper by U-Trau BlackWatch. PLU "Baby Lutes" silkscreened on front in white, \$15.95

4. Fuzzy Children's Sleeper in white with gold PLU logo, \$13.75

5. Evenflo® Baby Bottle in clear plastic with PLU logo silkscreened on its side. Holds 8oz, \$4.75

ORDER FORM

QTY.	ITEM #	DESCRIPTION	COLOR CHOICE		SIZE	PRICE							
			1st Choice	2nd Choice									
Subtotal													
<table border="1"> <tr><th colspan="2">Shipping & Handling</th></tr> <tr><td>Up to \$10.00</td><td>\$3.00</td></tr> <tr><td>\$10.01-\$20.00</td><td>\$4.00</td></tr> <tr><td>Over \$20.00</td><td>\$5.00</td></tr> </table>			Shipping & Handling		Up to \$10.00	\$3.00	\$10.01-\$20.00	\$4.00	Over \$20.00	\$5.00	Shipping & Handling (see chart left)		
			Shipping & Handling										
			Up to \$10.00	\$3.00									
\$10.01-\$20.00	\$4.00												
Over \$20.00	\$5.00												
Sales Tax (WA residents must add 7.9% sales tax)													
TOTAL													

SHIP TO: (Please print)

Name _____

Address _____

City _____

State _____ Zip _____

Day Phone (____) _____

Evening Phone (____) _____

Enclosed is my check, payable to the PLU Bookstore.

Please bill my Visa MasterCard Discover

ACCT. # _____ EXP. _____

SIGNATURE _____
(Signature required for charge purposes)



Mail your order to:

PLU Bookstore
Pacific Lutheran University
Tacoma, WA 98447



Phone orders:

206/535-8323

The PLU Bookstore appreciates the support you've given us. We're here for all students, friends, and alumni. If you can't find something you're looking for, please give us a call. Your comments are always appreciated.



OPEN MON.-THURS. 10:00AM-6:30PM • FRI. 10:00AM-5:00PM • SAT. 11:00AM-3:00PM

Winter Sports Previews

Football, soccer balls and volleyballs are still in use at Pacific Lutheran, and already it's time for winter sports to get underway.

Men's Basketball

Senior guard Erik Peterson, who averaged more than 15 points per game last year to earn second team all-conference honors, leads a Lute team that head coach Bruce Haroldson believes has a legitimate chance at a trip to nationals.

Haroldson and new assistant coach Bill Pandiani hope the team's outstanding depth will pay big dividends this season.

Women's Basketball

Kim Corbray, an all-conference guard a year ago as a freshman, heads up an experienced Pacific Lutheran team that figures to improve on last year's 11-14 overall record. Coach Mary Ann Kluge is counting on Corbray and senior center Jennifer Riches to carry a lot of the burden this season.

Swimming

Once again Coach Jim Johnson will have his Lute swimmers near the front of the pack when it comes to conference and national championship meets. The women's team should be particularly outstanding, with junior captain and numerous time All-American Masako Watanabe leading the way. Watanabe earned All-America honors in three individual and five relay events a year ago.

Wrestling

The 1995 season starts a new era in Pacific Lutheran wrestling as Brian Peterson and Jeff Thompson combine to take over for Chris Wolfe, who resigned after seven years at the helm of the program. Peterson is PLU's only national wrestling champion, having won the 158-pound title in 1993. Thompson earned all-academic honors while wrestling at the University of Minnesota.



Matt Foreman Wins Second Straight Weightlifting Title

Matt Foreman, a senior physical education major at Pacific Lutheran University, won his second straight national title at the National Collegiate Weightlifting Championships, which were held in October at Louisiana State University in Baton Rouge, La.

Foreman, competing in the 238-pound weight class, successfully defended his championship in the Olympic-style competition. He lifted 298 pounds in the snatch and 375 pounds in the clean and jerk, his two-lift total of 673 pounds beating his nearest competitor by 29 pounds. Foreman's attempt at equalling the national collegiate record of 385 pounds in the clean and jerk came up just short.

The native of Page, Ariz., is coached by John Thrush, a national champion in 1977 while representing the University of Puget Sound.

"We're both looking forward to future competitions which will serve as qualifiers for the 1996 Olympics, as this one did," says Foreman. "I haven't qualified to be on the Olympic team, but hope to do so over the next five months."

Fall Sports Roundup

BY NICK DAWSON

Post-season playoffs and Pacific Lutheran athletics are generally synonymous terms, and this fall has been no different.

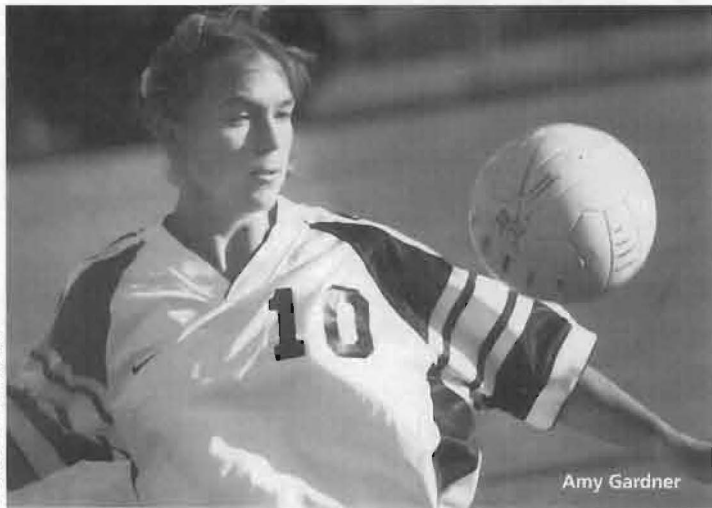


FOOTBALL

It figured to be somewhat of a down year for the Lutes after they lost five first team all-league defensive players, but Coach Frosty Westering reloaded and had the Lutes making their 14th trip to nationals in the past 17 seasons. Pacific Lutheran, led by senior tight end Gavin Stanley, the Mt. Hood League Co-Offensive Player of the Year, played Findlay of Ohio on Nov. 18. The Lutes lost the first-round match 21-14.

LEFT: PLU vs. Central – #44 Travis Hale, #90 Josh Arnold, #70 Ryan Mangan

BELOW: #596 Brent Roeger, #594 Ryan Pauling

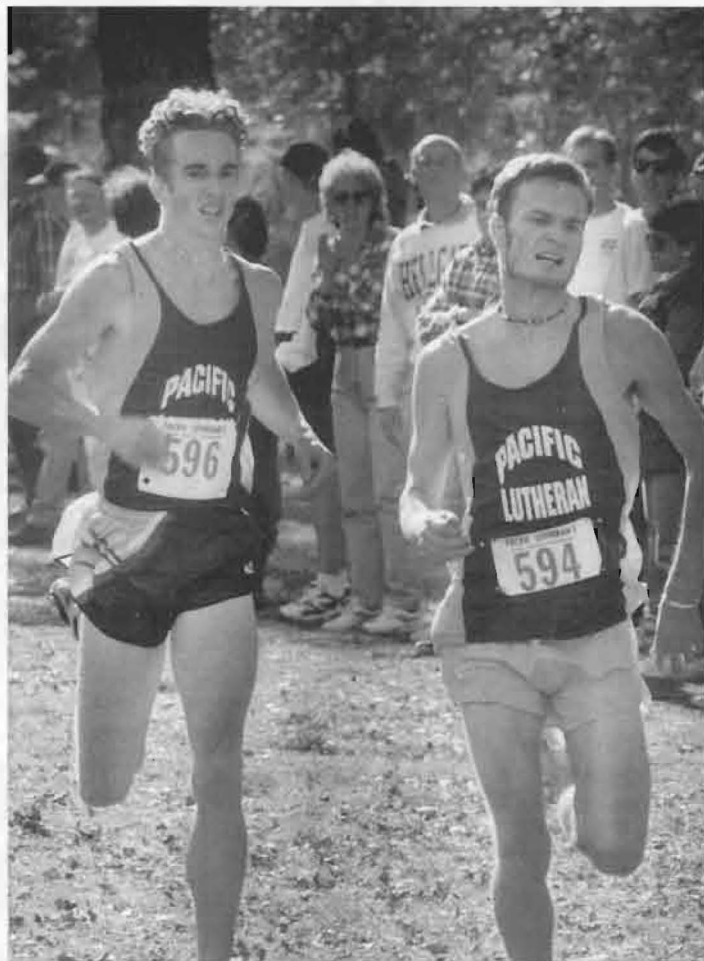


Amy Gardner

SOCCER

In soccer, both the men's and women's teams qualified for the Northwest Conference of Independent Colleges post-season tournament. The men's team won the tournament for the second straight year before losing at regionals. They finished with an 11-9-2 overall record. The Lutes scored 38 goals in conference matches to lead all teams in that category.

The Pacific Lutheran women were 6-5-1 during the conference season. They lost to Willamette in the first round of the conference tournament and finished with a 12-7-1 overall record.



CROSS COUNTRY

Coach Brad Moore's men's and women's teams swept the Northwest Conference of Independent Colleges titles, qualifying both squads for the national meet, Nov. 18 in Kenosha, Wis. The women's team finished 8th and the men placed 10th. In Coach Moore's 16 years at Pacific Lutheran, the women have won 13 conference titles and the men 10 conference crowns.

VOLLEYBALL

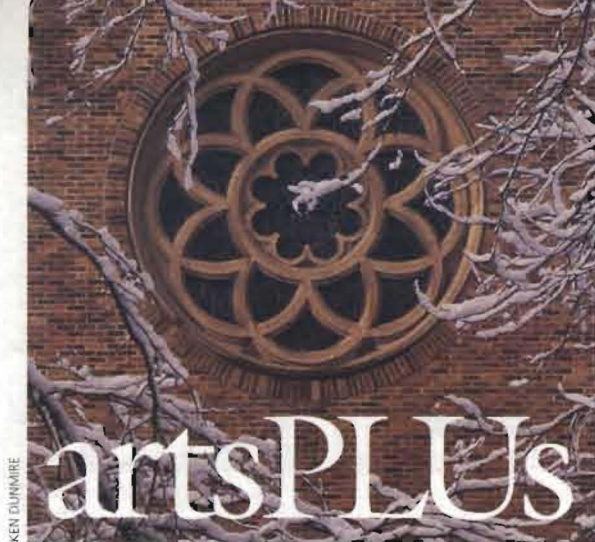
A five-game victory over Willamette, which put an end to a 21-match conference win streak for the Bearcats, was the highlight for the volleyball team. The Lutes, unfortunately, missed out on a conference playoff berth by one spot.

David Olson Announces July Retirement



Come July 1, 1996, David M. Olson will no longer have to make the 35-minute daily drive from his Lake Lawrence home near Yelm to Pacific Lutheran University. Olson will retire as Athletic Director and Dean of the School of Physical Education, effective that date.

Since 1968, Dr. Olson has directed undergraduate degree programs in physical education, and in 1991 implemented the School of Physical Education's graduate program. In addition, he has built the school's intercollegiate program from 12 sports to a combined 19 men's and women's sports.



KEN DUNNIRE

artsPLUs

JANUARY

- 6 Honor Band**
3pm, Eastvold Auditorium*
PLU hosts a high school honor band concert. Guest conductors include Thomas Lee, UCLA, and Gerald King, University of Victoria, B.C.
- 11 A Bit of Sweden**
12pm, Scandinavian Cultural Center
"Those Folks at Bishop Hill" will be presented by Professor Byron Nordstrom from Gustavus Adolphus College, St. Peter, Minn. The lecture follows the history of the Janssonites, a group of Swedes who followed a man named Eric Jansson to an area in Western Illinois known as Bishop Hill. The settlement was eventually wiped out. Tickets are \$8 and include lunch. Call Susan Young, (206) 535-7349.
- 12 Gospel Jamboree**
7pm, Mary Baker Russell Music Center
Local entertainers celebrate Martin Luther King Jr. Day with a Gospel Jamboree. Tickets are \$5 general and \$3 students. Call (206) 535-7195 for details.

FEBRUARY

- 3, 4 Opera Workshop**
4pm on February 3; 3pm on February 4
Eastvold Auditorium
Giacomo Puccini's comedy "Gianni Schicchi" is the featured work at PLU's Opera Workshop. Also featured are "Great Moments in Opera," selected trios, quartets, arias, ensembles, etc., from famous operas.
- 9 Faculty Recital**
8pm, Eastvold Auditorium
David Dahl, PLU music professor and organist at Christ Church, gives an organ recital.
- 10 Spring Moon: Music and Dance of Imperial China**
7:30pm, Mary Baker Russell Music Center
Unravel the mystery of Chinese arts as the Warren Chang Ensemble performs ancient Chinese music on classical instruments, the Hengda Dance Academy performs ancient Chinese classical dance, and the Chinese R&D Association performs the Beijing Opera-style comedy "Picking up the Jade Bracelet." Also on tap are readings of Chinese works and other multi-media presentations. The performance is free. Call (206) 535-7602 or (206) 535-7661 for details.
- 11 What is Love?**
3pm, Mary Baker Russell Music Center
PLU presents a program of love songs highlighting the works of Donizetti, Dvorak, Faure, Delius and Cole Porter. Featuring Mira Frohnmayer, mezzo-soprano and chair of vocal studies at PLU, and Judith Kehler Siebert, pianist and faculty member at Syracuse University and the Eastman School of Music in Rochester, NY.
- 25 Alumni Baseball Game**
All baseball players are invited back to PLU for the annual alum game at 1pm. Call 206-535-8789.
- 27 Lila Moe Memorial Concert**
8pm, Mary Baker Russell Music Center*
Violinist Marta Kirk, PLU music faculty, performs works by Bartok, Paganini and Saint-Saens. Proceeds benefit the Lila Moe Scholarship Fund.

29 Lyric Brass
8pm, Mary Baker Russell Music Center*

MARCH

- 1-10 Cyrano de Bergerac**
8pm, March 1, 2, 8, 9; 2pm, March 10
Eastvold Auditorium
PLU Theatre presents the classic story of the dashing, proud and romantic swordsman whose grotesque nose hinders the pursuit of Roxane, his one true love.
- 2 Jazz Ensemble Concert**
8pm, Mary Baker Russell Music Center
- 8 Fear No Music**
8pm, Mary Baker Russell Music Center
Fear No Music, a six-member Northwest chamber music ensemble, performs works by Schoenberg, Scotto and Stolkhausen.
- 10 It's So Romantic**
3pm, Mary Baker Russell Music Center*
PLU music faculty Jane Harty (piano) and Seattle Symphony violinist Leonid Keylin present romantic music for piano and violin highlighting such composers as Chopin. Proceeds will go to the Salishan Mission.
- 12 University Symphony Orchestra**
8pm, Mary Baker Russell Music Center
The University Symphony Orchestra performs works by Wagner, Liszt and T'chaikovsky. Ned Kirk, guest pianist.
- 13 Choir of the West**
8pm, Mary Baker Russell Music Center
Ensembles from PLU's Choir of the West perform.

14 University Chorale Homecoming Concert
8pm, Mary Baker Russell Music Center

26 Made in America
8pm, Mary Baker Russell Music Center
The University Wind Ensemble performs works by American composers Mennin, Gould and Snoeck, and PLU's Cindy McTee and Greg Youtz.

28 Regency String Quartet
8pm, Mary Baker Russell Music Center*

29 The South Sound and China: Developing Our Business Edge
9am, Scandinavian Cultural Center

A panel discussion covering trade issues with China, moderated by Eden Woon, the executive director of the Washington State China Relations Council. For more information, call (206) 535-7300.

UNIVERSITY GALLERY

Electronic Imaging

February 11 - March 14

PLU Associate Professor of Art Bea Geller, a specialist in computer-generated art, will present a combined show with Charles Bartley.

The University Gallery is located in Ingram Hall on the PLU campus. Gallery hours are 8:30am-4:30pm weekdays. Admission is free. For information call (206) 535-7386.

MUSIC EVENTS: tickets are \$8 general, \$5 students/seniors and \$3 PLU alumni unless otherwise noted. Questions? Call the Music Department, (206) 535-7602, or the Public Information Office, (206) 535-7430.

THEATRE EVENTS: tickets are \$7 general, \$4 students, seniors, PLU faculty and staff. Questions? Call the Theatre Department, (206) 535-7760.

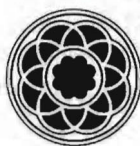
artsPLUs events are subject to change.

* no passes



Her Majesty, Sonja, Queen of Norway stops to visit with an admiring fan during the much-anticipated Royal Visit to the PLU campus October 26. More photos page 3.

CHRIS TUNIBUSCH



PACIFIC
LUTHERAN
UNIVERSITY
Tacoma, WA 98447-0003