

TOWE AND HANSON TO REIGN

The Mooring Mast



VOLUME 32, NUMBER 20

PUBLISHED BY THE STUDENTS OF PACIFIC LUTHERAN COLLEGE

FRIDAY, MARCH 18, 1956

Seattleites Crowned Saga King and Queen

Phinney Ridge Lutheran Church in Seattle has the honor of counting both Queen Janet Towe and King Vern Hanson as congregational members. Both Saga royalty are Seattle contributions to the Pacific Lutheran College scene.

Queen Janet came to PLC from Seattle's Lincoln High School for this, her freshman year. The petite blond will put on a student nurse's uniform next year at Emanuel Hospital as the first step in becoming a registered nurse. The proud Ivy Hallers, Janet's sponsors, think that a white cap will look almost as good as the crown she is wearing tonight. Until then, she takes part in Young Life, White Caps, and Chorus.

Ballard of Seattle was King Vern's high school four years ago. His senior year at PLC has topped off a four-year stint on Harsh's baseball and basketball teams. Lettermen's Club, Blue Key, and Senior Class president have been his activities while working toward a degree in math education. For his outstanding record Vern was chosen as a member of Who's Who in American Colleges for 1955.

Calendar Of Saga Carnival Week-end

Tonight the 1955 Saga Carnival opened in the CMS auditorium with the coronation of Janet Towe and Vern Hanson as the Queen and King of the event. Burt McMurtry, radio personality from KTAC, acted as master of ceremonies and crowned the royalty.

Tremendous applause indicated the audience's acceptance of the royalty. The blond queen, holding an arm bouquet of roses, wore the royal robes.

They both stepped forward to be crowned by Burt McMurtry. A gold crown with pink split carnations was placed on the queen's head, while the king received a replica of a jester's crown in gold with red pom poms.

Entertainment was furnished by Tommy and Benny from Portland, who offered varieties in music with instruments such as the accordion and trumpet. They are returning from a tour of Washington and Oregon.

Following the coronation the king and queen were honor guests at the carnival in the gym. Many gayly decorated booths awaited the huge crown which joined in the festivities.

Saturday night the Lettermen's chorus will present their annual Minstrel Show at 8:00 p.m. in the CMS auditorium. Directing them will be Jerry Bayne and accompan-

(Continued on Page Four)

Choir People Tell of Trip

Last Monday evening the tired but happy members of the Choir of the West returned to the campus after having completed their two-week tour. This year their tour took them to Seattle and Spokane, and then to Coeur d'Alene, Lewiston, Boise, Poratello, American Falls, and Idaho Falls in Idaho, Ogden and Salt Lake City in Utah, and then back to Nampa, Idaho, and to La Grande and Hermiston, Oregon. Attendance was very good everywhere they went. They will be heard locally this Sunday, March 20, at First Lutheran Church in Tacoma.

The Choir experienced an unusually great amount of trouble with its buses, but in spite of it was late to only one concert. A snowstorm on Snoqualmie Pass made necessary the use of tire chains which slowed down travel to such an extent that half of the Choir was thirty minutes late to the Spokane concert. No sooner had the second bus arrived in Spokane and unloaded all but four passengers but a faulty brake line gave way and the bus rolled backward down an icy hill, narrowly missing four cars. During the following two days, both buses went into the shops of Inland Motor Freight where Mr. Gus Nieman, the owner, (Dick Nieman's father) saw to it that necessary repairs were made. Worn-out brake diaphragms were replaced, the faulty air line repaired, and front wheel bearings restored to good condition on both buses. The buses ran well for nearly all of the remainder of the trip, slowed only by ice, snow, and cold weather (-13° at Coeur d'Alene). One bus suffered engine failure near Castle Rock, Wash., on the last lap of the trip home, but the other, with a double load of passengers, returned safely to the college.

The high point of the tour for most of the Choir members was Salt Lake City, Utah. The congregation there had arranged an excellent tour of points of interest, which occupied the whole day. First there was a tour of Temple Square, with a special organ concert given in the Mormon Tabernacle by Dr. Frank Asper, the Tabernacle organist, whose wife is organist in the local Lutheran Church. Following the concert, the choir members went to the home of Anne Stewart where they were fed a delicious meal; then they were whisked off to nearby Bingham, Utah, for a view of the

(Continued on Page Four)



Above is pictured Queen Janet Towe, who will reign over the Saga festivities, along with King Vern Hanson, this weekend.

English Debators To Appear Here

Stuart Gilbreath and Tom Swindland, PLC juniors, and Jennifer Copeman and Lester Borley, University of London students, will meet in a Pi Kappa Delta sponsored International Debate in the CMS Friday, March 25.

Miss Copeman and Mr. Borley are sponsored as international debaters by Institute of International Education, Inc., and are sponsored on the PLC campus by Pi Kappa Delta.

Miss Copeman has been educated at Bedford College, College of Estate Management and University of London. She holds an Honors Degree in English.

In student activities, she has been president of the University Union, vice-president of the University of London Union and editor of the Bedford College literary magazine.

Mr. Borley was educated at Queen Mary College and University of London. He is now reading for an honors degree in geography. He has been active as president of Queen Mary College Union, deputy president of the University of London, and he was a member of the British delegation sponsored by the Council for Education in World Citizenship to Youth Festival. He was a corporal in the Royal Air Force and spent his service time in the British Isles.

Both of the foreign debators are 23 years old.

This is the fourth year out of five for PLC to be honored with International Debaters. The honor is earned by participation.

The students picked for the debate were chosen by Mr. Theodore O. H. Carl, speech director, on the basis of participation, ability, and interest. This is, indeed, an honor for the PLC debaters, for Mr. Carl has this to say of the contest, "We have always had the reputation that we have given them the best debates in the entire country, and we want to keep that."

Stuart Gilbreath is a junior at PLC, majoring in speech. He is active in Pi Kappa Delta and now holds an honor degree, the second highest distinction this organization offers. By the end of this year he will have earned special distinction, the highest honor. This year Stu placed first in the all-college oratorical contest.

Stu comes to PLC from Stadium High School in Tacoma. This is his third year in debate and for the last two years has been on all major

(Continued on Page Three)

REV. LUTNES CALLED

The executive committee, by authorization of the college board of trustees, has issued a call to the Rev. Robert W. Lutnes, pastor of Hope Lutheran Church, Tacoma, to serve as pastor of the Pacific Lutheran College student congregation. The Rev. Mr. Lutnes has the call under advisement.

Library Circulars To Aid Students

The student library committee presented circulars to the student body today in chapel. These circulars contained eleven questions to be answered by the students. This was done to create interest in the library. A similar questionnaire was sent to over 200 students this summer to find out different opinions and to receive suggestions for improvement.

"It must be emphasized that the library is maintained for the benefit of the students and gives a distinctive opportunity for the students to find out if they can make good at self government," remarked Mr. Solbert.

Several student committees have been formed to work on issues concerning the library. The committees and chairmen are: Steering, Joan Kittelson, chairman, and Mildred VanBuren and Elwood Rieke; polling, Myrna Berg; ways and means, Larry Eggan and Phil Nordquist; evaluation, Wally Berton and Gordon Huesby; aims and objectives, Glenn Johnson.

Kathy Biery Receives CSA Scholarship

Kathryn Biery, a senior at PLC, recently received word that she has been chosen as one of twenty students in the United States to be granted a \$200 scholarship, by the National Lutheran Council. The scholarship is to be used for expenses that will be hers as she travels in Germany and Norway this summer studying the Christian students movement there. Along with this they will study the World Student Christian Federation, of which the CSA is a part.

In order to apply for the scholarship, Kathy filled out one of the application blanks sent out by the National Lutheran Council to the C.S.A. groups. She also had to write a paper on "What I Think Should Be the Purpose of the European Study Program and What I Should Get Out of It." She was chosen on her scholarship, leadership and service ratings, and her participation in C.S.A. activities during her four years at PLC.

The boat Kathy will sail on will leave New York City between June 15-20. She will be abroad until some time in the latter part of August.

The Mooring Mast

Published every Friday during the school year by students of Pacific Lutheran College.

Office: Student Union Telephone GRanite 8611
Subscription Price—\$3.00 per year



EDITOR-IN-CHIEF.....JOAN KITTELSON
 NEWS EDITOR.....KATHERINE SANNERUD
 NEWS STAFF—Lois Brekvam, Agnes Hallanger, Barbara Gronke, Arlene Baker, Dave Englund, Janet Sveen, Jim Lokken.
 FEATURE EDITOR.....JOANNE POENCET
 FEATURE STAFF—Beverly Sveningson, Phil Nordquist, Ted Carlstrom, Myrna Berg, Wally, Berton, Martha Douglass, Al Freed, Wilbur Sackman.
 MAKE-UP EDITOR.....DOROTHY JOHNSON
 SPORTS EDITOR.....WALT BALL
 SPORTS STAFF—Loonie Spry, Clyde Genz, Dan Rose, and Brian Price
 EXCHANGE EDITORS.....BEVERLY PIERSON, SHIRLEY VEVANGE
 AD MANAGER.....PAUL LUCKY
 BUSINESS MANAGER.....RAY GOLD

C. S. A. SPEAKS

During these frantic days spent in the hazardous pursuit of knowledge, the scope of our reading becomes narrower and narrower, until at last we find ourselves concentrating our attention on a few compulsory texts and very little else beyond "Long Sam" and "Terry and the Pirates." This is not to minimize the aforesaid mediums of enlightenment, but merely to point up the fact that most of us have sadly neglected the area of reading in our lives.

It is very apparent that we as individuals cannot experience all things by being everywhere, or seeing and hearing all things. Even with the advent of television and motion pictures the most complete and most reliable source of information is still the written word.

At this juncture we must be most discriminating, for in our every-day experience we come in contact with reams and volumes of printed matter: some good, some extremely otherwise, and some not worth the paper or the effort. We must choose.

We are living in an age of pressure. There comes a time finally when all are interested in what the student has to offer to this confused globe and, even more important, we are concerned with freshness of ap-

proach and clarity of thought. Into this turbulent pot pourri has come a new magazine, exclusively for students. By its name, *Frontiers* it suggests an outreaching toward new areas and ideas, a magazine with a vision! The entire Christian world is steadily moving forward, in every realm of endeavor, opening new "frontiers" to those who are willing to approach it.

But hold! Could it be that some things are transpiring in this world that we know nothing about? Will we permit our eyes to be opened that we might be a part of this frontier movement? Or will it grow in spite of us, instead of with our convicted support?

Frontiers is an eye-opener. Every area of the Christian movement from the greatest to the least, individual and universal, is being opened for examination and consideration. Throw those pre-conceived notions to the winds. This is a revolutionary publication; something entirely new and different. Yet these matters are so vital that all are affected by them, consciously or otherwise. Here is an opportunity to join the "frontier" movement.

Subscribe now to *Frontiers* magazine and accept the challenge it presents.

Notes from Emanuel . . . Dorm Doin's . . .

Dear PLC-ites:

We heard that you White Caps are planning your waffle supper, and that news brings to mind the wonderful time we had giving ours on February 24. Our theme, around which the program and decorations were centered, was "Come to the Mardi Gras." The program included music by an octet of sophomore girls, a piano solo by Judy Starvich, and a dramatic reading by one of the sophomore diploma girls.

Our L.S.A. has been very active since the first of the year, so L.S.A. news is plentiful. When the Junior Degree class moved to Salem for their psychiatric affiliation, leaving we sophomores as the only PLC-ites at Emanuel, we acquired the house where they had lived as our own "Lutherhouse." From now on we plan to have all our L.S.A. activities there. Chaplain Randallolph, of Emanuel, dedicated "Lutherhouse" for us on Sunday, March 13, when

(Continued on Page Four)

Unbenownst to certain elements on campus, South Hall has once again sprung forth. As Spring begins to blossom, with the extra hours of daylight, the birds singing in the early morning, and the first touches of tender green shoots, so your sentimental columnist, with a bit of nostalgia at the farewell to winter, will attempt to summarize certain jots and titles neglected in the past few weeks.

What is dorm news without an engagement. This one was a real surprise to all concerned. Sneaky Carol Edlund and Myrna Pfannekuchen planned a surprise birthday party for Myrna. After having her friends go through contortions to keep her from discovering "her" surprise party, she shocked them by playing a game with them. After they had partaken of punch and cake, small envelopes were passed out and in each envelope was a

(Continued on Page Four)

Reminder From Old Main - - -

Old Main Tolo

Spring is just about to appear into the year of 1955 and along with Spring comes the idea of flowers and ".....". The season of Spring would not be official on the campus of PLC if it was not welcomed in by the Old Main Tolo, "Garden in the Rain." Yes, at last you know the name and now let's learn something about the happenings of the Tolo.

The reservations were sold in a matter of days and now there is a waiting list of girls who want to buy tickets. Iu want a more fitting atmosphere the Lakewood Terrace was reserved for the ~~.....~~ Semi-formals, along with boutonnières and corsages, are in order. Mr. Kettle will be the guest speaker along with such other top performers as Dr. Snackenber, the Squires, the Cordettes, and an outstanding band. Also memory pictures will be taken for the price of a dollar.

April 15th at 7:00 p.m. This most outstanding dinner date of the year will take place. So, boys, when that timid girl asks you to the "Garden in the Rain" dinner date please reply with a yes and then help her up off of the ground—for here she has fallen, I'm sure.

Letters to the Editor . . .

What's the gripe? This seems to be the major question floating about our campus these last few months. The act of griping or perhaps more ably stated, discovering a problem is not wrong. No, not wrong unless each student realizes it is only an act, not the whole play.

Discovering a problem is like one act or a step in a math problem. To accomplish the end of the play or a solution to the problem more and harder steps must be taken. We have done well in our discovery, but the challenge to do better in our solution still stands before us.

Now step number two. If a problem exists there must be a cause. Using as a prime example of our recent criticism of student government, do we know what we are criticizing and trying to improve? Some of the following questions warrant some official answers before we can tell ourselves that we have a factual problem.

What power does the student council have on our campus in general, and in each specific area? What is its budget and how is the money used? What is your part in the student council? (Everyday heard the invitation in Friday's chapel for anyone to attend the meetings. How can you make your ideas known to the members of the council?)

When we have the answers to some of the things we have been griping about we will be much closer to an actual solution than ever before. And if we don't have the answers we had better start using Mr. Webb's technique and "just get the facts."

There it is—just like that. Now all that must be done is that every student put out the time and effort to find out what makes things work around here, and the reasons and facts behind what is done; or stop yasting his own (and anyone who will listen) time griping about some fiction having no basis in fact. If we are willing to solve, let us be prepared to learn.

—Beverly Sveningson

A Supercilious Sneer

Nordquist - Carlstrom

As we wander about campus looking for dirt and following the well-defined trail of red herring we usually run smack into something to write about. This week our myopic eyes and keen ears "seized" on a veritable gem, a sort of cross section of the PLC mind. So, take the proverbial grain of salt and into the mire of another S.S. observation.

The faithful reader probably knows that much of what he sees here first comes into being in the dark-over-crowded, inspiring coffee shop. This week's tripe is no exception.

To write this thing some sort of inspiration had to come. As we were booth'd in the above mentioned establishment, receiving succor, stimulant and of necessity inspiration, we chanced to hear a whispered comment from the next booth. To clear the record, let it be known we weren't eaves-dropping. The co-ed that made this comment said she was "Oh, so worried" as to when she would get her "oh, so much" studying done; then with a raucous, but heart-rending squeal she bubbled, "it's too much! I'll never get it done!" (This is not intended as an affront to you who are feminists.) To this statement we responded with the shedding of the usual sympathizing tear, ~~.....~~ and were off to see the Queen.

Several hours later we were back in the SUB to satisfy our frightfully rumbling stomachs with a candy bar. (Number one reason why we are fund-less, always hungry. Kind of funny, eh?)

We were standing before the counter transacting candy bar business when it happened. A familiar clutter arose from the rear of the coffee shop, a familiar breeze whipped through the place. We turned around to see who's oral cavity was having the carnival—guess who? The same Miss Co-ed saying, "I'm oh so busy! It's too much! I'll never get it done!"

Well, this story has a moral, an object lesson or something. It's so obvious we'll just forget about emphasizing it, however.

Say, how many of you have seen the LSA monthly publication, "Frontiers"? It's really fine and well worth a subscription.

We are interested in knowing how many freshmen there are at PLC (apply this in a "broad" sense). What do you say?

For all of your Automotive Service needs . . .

Our Regular is Supreme — Supreme Is Best

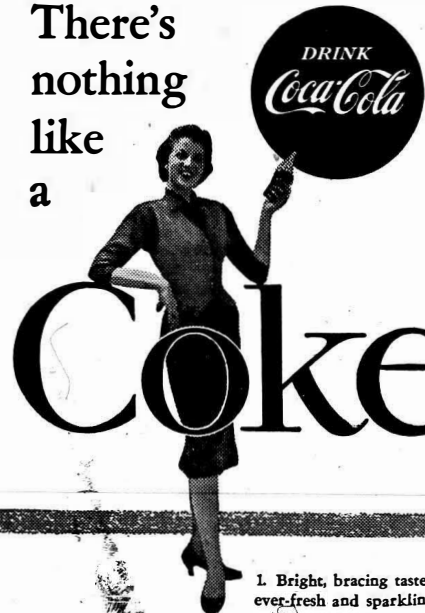
GLADIATOR SERVICE

Pacific Avenue Mechanic on Duty GRanite 7863

50 million times a day at home, at work or on the way

There's nothing like a

COKE



1. Bright, bracing taste . . . ever-fresh and sparkling.
2. A welcome bit of quick energy . . . brings you back refreshed.

BOTTLED UNDER AUTHORITY OF THE COCA-COLA COMPANY BY COCA-COLA BOTTLING, INC., TACOMA, WASH.

"Coke" is a registered trademark.

© 1955. THE COCA-COLA COMPANY

INTRAMURAL HIGHLIGHTS

DeJardine's successfully defended their championship in the intramural basketball, by splitting the honors with North Hall (3). Those playing on the championship fives were: DeJardine's: Bob Timm, Iver Ellason, Dick Bromley, Maurice Fink, Larry Lane, Peter Luvaas, Dick DeJardine, Phil Wigton, and Duane Romo. North Hall (3): Rejerson, Lowell Haeffele, Wally Rofelstad, Norm Schjable, Ray Reep, Dick Brandt, Gordon Christian and Larry Eichler. The mighty Stubs, paced by Lee Rosborgs: 17 points, won their last game, which put them in sixth place instead of ninth, had they lost.

FINAL STANDINGS

	W	L	PF	PA
DeJardine's	16	4	986	717
North Hall (3)	16	1	1029	787
Omegas	11	6	970	818
Coal. Barracks	13	8	1121	1118
Crew Cuts	12	8	974	839
Stubs	12	9	881	810
Good's Gulch	11	9	783	739
Ivy Hall (A)	11	9	941	798
Chimps	11	10	1031	913
Tacoma	10	10	764	729
East, Parkland	10	11	1095	910
Faculty	9	12	919	929
Jokers	6	15	763	998
Clover Creek	3	18	721	1134
Ivy Hall (B)	0	21	659	1316

Curt Hovland, the Crew Cuts' big gun, finished the season with a total of 328 points and a 16.4 point average for twenty games. This put him up as top individual scorer for the year. Lowell Haeffele jumped into second place in the last two games and had a season's total of 333 points. Richard Schwindt, with 295 points, was third. Stan Pawley, from Central Barracks, came in 4th with a total of 284. In fifth place, Dave Berntson had 255 points.

In the free-throw contest records were shattered by many. Shooting 100 shots in competition, Jerry Redburg (Tacoma) hit 85 to tie Dave Kendall's old record, but before the contest was over two deadeyes hit 90 out of the 100. Bruce Hille (N.H. 1) and Duane Moe (Ivy Hall) each poured in 90 to set the new individual record.

North Hall (1) was the winning

Tennis Team Begins Season

By Clyde Genz

Under the player-coach leadership of Pete Luvaas the Lute tennis team should have a successful year with five of last year's six men returning.

Being a young and green team last year, the racketmen got off to a slow start but towards the end of the season really started moving, with Pete Luvaas and Bruce Hille reaching the quarter finals in the Evergreen Conference playoffs. Luvaas also reached the quarter-finals in singles play. In the NAAA playoffs, the Luvaas-Hille combination reached the semi-finals before losing to Central Washington.

Returning for more action this year besides Hille and Luvaas are Bill Johnson, Adrian Knutzen, and Ivan Seppala.

With spring fast approaching, the net men have a tough schedule with matches already scheduled:

- April 7—C.P.S., there.
- April 16—Central, there.
- April 20—Western, here.
- April 22—Central, here.
- May 1—U.B.C., here.
- May 10—U.B.C., there.
- May 12—Western, there.
- May 13—C.P.S., here.

Support Saga Carnival

team in the contest. The five lads on first combined efforts and came up with a record breaking total of 368. The old record set by Eastern was 352. The five on the team from North Hall were Bruce Hille, 90; Norm Pless, 76; Clyde Genz, 73; Bill Orme, 67, and either Dave Steen or Bill Foege, as each had 62.

Top Ten Free Throwers
 Bruce Hille (N.H. 1) 90.
 Duane Moe (Ivy Hall) 90.
 Gerry Redburg, Tacoma) 85.
 Glen Dumburg, Tacoma) 83.
 Wendel Stakkestad (C. C.) 82.
 Dave Derantsen (Eastern) 80.
 Tom Gilmer (Cent. Bar.) 77.
 Jerry Benson (Western) 76.
 Norm Pless, (N.H. 1) 76.
 Dick Kent (N.H. 2) 76.
 Credit must be given to the courageous Ivy Hall (B) squad. They never gave up, although they lost every game. They were always present for the games and always put up a good fight.

Intramural volley ball gets underway next week. Defending co-champions are DeJardine's, Clover Creek and the Faculty. The competition looks like it might be rough and there may be some new champs at the end of the tussle.

Attention, Seniors

Seniors interested in career appointments as Food and Drug inspectors or chemists with the Food and Drug Administration, Department of Health, Education and Welfare, can obtain application forms from L. O. Eklund, Dean of Men.

Positions as chemists and food and drug inspectors are available in 16 large cities throughout the United States. Some appointments will be at Seattle District, which includes the States of Washington, Oregon, Idaho, Montana and the Territory of Alaska.

To be eligible for appointment applicants for the position of chemists must have completed a full 4-year course leading to a bachelor's degree with 30 hours in chemistry.

Food and drug inspector applicants should have a degree in one or a combination of the natural sciences such as chemistry, biology, animal husbandry, etc.

Applications will be accepted from college students in their senior year of study.

Ten Students Offered Law Scholarships

Ten college students will be selected this year to study law at "one of America's most interesting law schools," under the scholarship program set up by Leroy Highbaugh, Sr., of the Highbaugh Foundation of Louisville, Ky., according to Dr. J. Ollie Edmunds, president of Stetson University.

The scholarships, valued at \$1,500 each over a three-year period, will be used at Stetson's College of Law beginning this fall when Florida's oldest college of law opens its fifty-fifth year and its second on its new campus in St. Petersburg.

Competitive examinations will be given to select the scholarship winners. Time and place for these examinations may be obtained from the dean.

Summer session for both beginning and advanced students is scheduled for June 14-August 22. Fall term classes begin September 19th.

English Debators

(Continued from Page One)
 Forensics trips. His main speech interests are extemporaneous speaking, debate, and oratory. He is taking a pre-law course.

Tom Swindland is also a junior at PLC. His majors being speech and history. Tom, also active in Pi Kappa Delta, holds a degree of honor and will receive special distinction in the spring.

Tom's home town is Parkland. His main interests in Forensics are debate, extemporaneous speaking and impromptu speaking. He is also active in drama.

Tom and Stu have been debating together for the past year and a half. Stu is first speaker, and Tom, the second.

ATTENTION, COLLEGE MEN

We need two men students who can work any three evenings a week, 4:00-8:30, and half days Saturday. Applicants should have a car. Pay will be \$25 per week. Applicants will be interviewed at the Student Union Bldg., in T.V. lounge, at 4:00 p.m. Monday, March 21. Ask for Mr. Arnold.

WEEK'S CALENDAR

Friday, March 18
 Saga Carnival—8 p.m., CMS; 9 p.m., gym.

Saturday, March 19
 Saga Carnival, 8 p.m., CMS; 9 p.m., gym.

Sunday, March 20
 8:00—Choir of West Homecoming Concert, First Lutheran Church, Tacoma.
 11:00—Service, CMS.
 3:00—Mu Phi Epsilon pledging, CMS Lounge.

Monday, March 21
 6:15—Prayer Service, CMS Bldg.
 7:15—L.C.C., L-104.
 9:00—Pi Kappa Delta, CMS-122.

Tuesday, March 22
 12:30—Dayroom Girls.
 12:50—Lettermen, M-109.
 2:00—Dorm Auxiliary.
 4:00—L.D.R.
 6:30—Spurs, 4th floor lounge.
 6:45—Mission Crusaders, TC.
 6:45—Student Council, ASBO.
 7:30—Confirmation, Roe's home.
 8:30—Tacoma Civic Orchestra in Concert, CMS.
 9:00—CSA Council, clubroom.

Wednesday, March 23
 6:15 a.m.—Toastmasters.
 7:00 p.m.—Alpha Sigma Lambda.
 7:00—American Chemical Society, S-108. Movie.
 7:30—Lady Lutes, clubroom.

Thursday, March 24
 1:00—Campus Devotions.
 6:30—Alpha Phi Omega, L-104.
 7:15—White Caps, L-104.
 7:30—F.T.A., upper SUB.

Friday, March 25
 Faculty Wives, Mrs. Strunk.
 8:00 p.m.—International Debate, reception following, CMS lounge, sponsored by Pi Kappa Delta.

President S. C. Eastvold will give the sermon Sunday at the first worship service to be held in the new sanctuary of St. Timothy Lutheran Church, Seattle. He will be present at the cornerstone laying for the new edifice which will take place in connection with the morning worship.

The Rev. S. E. Vevang, father of Shirley, PLC freshman, is pastor of St. Timothy's.

Dr. Gaylord Falde, president of the California district, Evangelical Lutheran Church, will speak at the regular chapel service next Thursday.

It's VERN'S . . .
 for cooked to order DeLuxe Hamburgers — Fish and Chips
 Home-made Pies
 9th & Pacific Tacoma

3-IN-1 TO SERVE YOU BETTER . . .
 Standard Heating Oils — Heating Equipment — Heating Service
 Enjoy That "PLUS" Service
 MARV TOMMERVIK'S
PARKLAND FUEL OIL SERVICE
 120th & Pacific Avenue Phone GRanite 8684

CENTRE CLEANERS
 ★ ONE-DAY SERVICE ★
 "Take a Look at Yourself"
 NEW LOCATION: 415 Garfield St., next to the Donut Bar
 PARKLAND CENTRE PARKLAND

Golfers To Meet WWCE For First Match

Winding up last year's season with a three won, four lost record, this year's golf team looks forward to a good season. Only men gone from last year's fine squad are Student Coach Len Nelson and Dave Hestness. The remaining men, of which three are sophomores, are Jerry Benson, Dick Kent and Ed Larson. Hob Romnes, a senior, will be back for his last year.

With the college golf course in fine condition after extensive summer redoing, the Lute golfers should be hard to beat this year. The golf season begins April 11 with a match here with Western.

- April 11—Western, here.
- April 22—C.P.S., there.
- May 1—U.B.C., here.
- May 9—Western, there.
- May 10—U.B.C., there.
- May 13—C.P.S., here.

PLC Board of Trustees To Meet

The college board of trustees will hold its annual spring meeting on campus next Thursday.

Dr. H. L. Foss of Seattle, president of the Pacific District, Evangelical Lutheran Church, will preside as chairman of the board.

Several important decisions affecting the future expansion of the college will be made at this meeting.

In the evening the board and their wives will be hosts to the college faculty and their husbands (or wives) at a smorgasbord dinner. A reception and program will follow.

President S. C. Eastvold will give a "shop talk" at the regular chapel hour Monday, March 28, at which time he will report on some of the action taken by the trustees.

Support Saga Carnival

Stella's Flowers
 Flowers for All Occasions
 WE DELIVER
 415 Garfield St. GR. 7463

ART'S SHOE SHOP
 Garfield Street
 QUALITY REPAIRING — DYEING

NEAL E. THORSEN
 TRICKS - JOKES - MAGIC
 Costumes, Tuxedos, Serpentine
 926 1/2 Broadway MA. 4861

When You Want Books
C. Fred Christensen
 Bookseller and Stationer
 932 Pacific Ave. BR. 4629
 Tacoma, Wash.

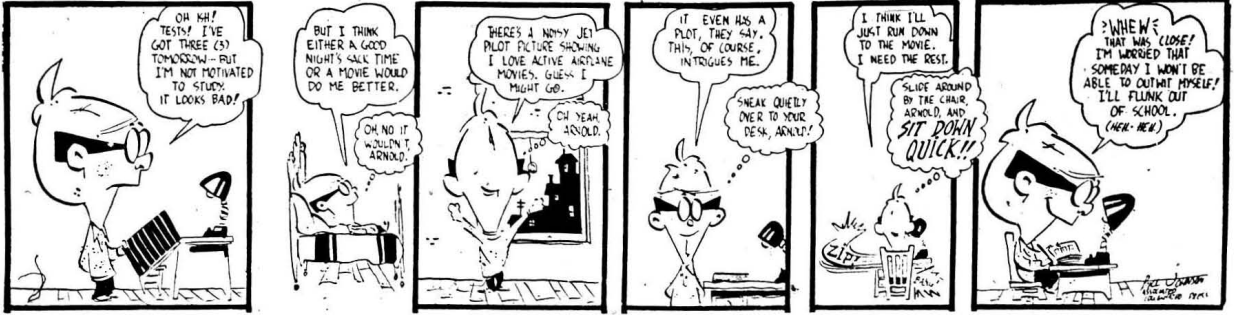
Parkland XXX Drive-In
 Delicious Double Patty HAMBURGER—45c
 Delicious Hot Chocolate
 119th & Pacific GR. 3211

C.O. Lynn Co. MORTUARY
 717 TACOMA AVE. Phone MAIN 7745

TOM'S ICE CREAMERY
 SANDWICHES - HOT DOGS SHAKES - MALTS

Madden's Men's & Little Men's Shop
 Parkland Center Bldg. GRanite 4242

Milk Shakes THE HANDOUT
 129th & Pacific GR. 9945



CSA Fellowship Meet

Pastor Neal E. Nelson of Broad View Lutheran Memorial Church in Seattle spoke at the CSA fellowship Sunday night at the SUB. This was the beginning of Mission Emphasis Week and Pastor Nelson spoke on the general theme of "The World Mission of the Church." He, however, made a more personal application and chose as his topic, "Where Do We Go From Here?"

A welcome is again extended to all students and teachers who wish to join in the Christian fellowship that this gathering can and does give.

DORM DOIN'S...

(Continued from Page Two) snapshot of Myrna and Dick Nodtvedt with the exciting announcement. Belated congratulations, Myrna and Dick!

Then the traditional birthday parties. Ruth Sather was a surprised girl Wednesday morning. Thinking it was 7:15 a.m. (it was really 7:00), she left for breakfast and was greeted by "Happy Birthday" when she reached the main floor. In the kitchen were her second floor friends who had prepared a breakfast of scrambled eggs, little pigs, rolls and coffee.

Devotions in South Hall have been particularly thrilling in the past few weeks due to messages from Dr. Rogness, Mrs. Rolander, Mrs. Robert Olson and Mrs. Fritts. A special thank you to these people who took time out to come and speak to us.

For independent thinkers only: S. Sner has begun a worthwhile campaign. Who's going to pick it up and carry it through?

Choir Trip Resume

(Continued from Page One) famous open-pit copper mine there. They arrived just in time to see the blasting operation. Following this, they were taken to see the Great Salt Lake and back to the church for supper before the concert.

The reception given the choir members by the Salt Lake City congregation was typical of the fine reception wherever they went. Meals were served to them in homes and church basements, and they spent the nights in homes of members of the congregations.

The choir is looking forward to next year's tour, which will take them to California, but it still has several appearances to make this year. Its home concert will be given this Sunday, March 20, in Tacoma's First Lutheran Church.

Saga Calendar

(Continued from Page One) ing will be Call Christensen.

Complete with black-face and a mystery interlocutor, the variety program will include such numbers as "Mood Indigo," "Dry Bones," "Old Man River," and "This Is My Country." Phil Nordquist, Jerry Benson, Jack Hoover, and Iver Eliason will be the end men in their routine.

Also featured in two spiritual numbers will be a double quartet consisting of Vern Hanson, Brian Price, Dennis Rodin, Bruce Hille, Larry Ross, Ricnie Heins, Dwayne Brandt, and Eddie Larson.

Officers of the Lettermen's Club who worked on the program are: president, Bud Lester; vice-president, Jack Sinderson; secretary-treasurer, Curt Howland; ICC representative, Stan Jacobson, and sergeant-at-arms, Jerry Benson.

Working many hours on the details of the entire carnival, the proceeds of which go to the 1955 Saga, have been Walt Schwindt, business manager; Anita Schnell and Gerda Nergaard, coronation; Dick Nodtvedt and Dick DeJardine, carnival construction, and Lee Roseberg, solicitor chairman.

Tickets from the coronation and the minstrel show will be the admittance to the gym for the carnival. Some of the door prizes, furnished by Parkland and Tacoma merchants, include lamps, portraits, camera, a set of dishes, and a pen and pencil set. There will also be individual booth and drawing prizes including dinner and theater tickets.

The Parkland Junior Chamber of Commerce will play an exhibition basketball game Tuesday, March 22, at 8:30 p.m., with the Texas Cowgirls.

Notes from Emanuel

(Continued from Page Two) the All-Portland L.S.A. met with us there.

Emanuel L.S.A. has been taking an active part in the organization of an all-city L.S.A. The last two monthly meetings have been held here, and another meeting is being planned for April 17 in "Lutherhouse." Our last meeting was attended by students from Portland University, Reed College, Lewis and Clark College, and, of course, Emanuel.

We are looking forward to the Area L.S.A. Retreat to be held at Camp Westwind on April 15, 16 and 17. Plans are being made concerning the program and the Portland Groups are in charge of publicity.

The Emanuel Quartette, composed of Judy Starwich, Janee Krug, Lois Danielson, and Joanna Lindeblom, are going on a recruiting trip this weekend to Aberdeen, Hoquiam, and Olympia. Esther Edlund and Herdis Michaelson (fresh at PLC in 1952-53) are also on the recruiting team.

Loads of luck to you PLC nurses in your waffle supper. We know you'll have a wonderful time giving it, and we're sure the rest of you students will turn out the wonderful food and entertainment.

The Emanuelites

PATRONIZE OUR ADVERTISERS

FOR SALE
1949 Chev. Convert., radio, heatcr, low mileage, gray, clean, stock. Gerald Baxter, 2617 North Orchard, Tacoma. Ph. PR. 9303.

Dr. Knorr Elected President of ALW

Dr. E. C. Knorr, head of the department of sociology at PLC, was elected president of the Lutheran Welfare Society of Pierce County at the society's annual meeting in the Bethlehem Lutheran Church, February 14.

He succeeds the Rev. Carl E. Rydell of Tacoma, who served as president of that organization for many years.

Other 1955 officers of the Welfare board are: The Rev. A. W. Ramstead, Parkland, and R. F. Engwall, Tacoma, vice-presidents; Rev. Louis Puhl, Tacoma, secretary; and Attorney Benjamin G. Hanson, Tacoma, treasurer. Those elected to the board were Godwin Rorem, O. E. Morken, the Rev. Manley Gjerde and the Rev. Erling Thompson.

Other appointments made at the first meeting of the Welfare board on February 21, were named to the board of governors of the Lutheran Home and Hospital Foundation. They are: The Rev. O. K. Davidson, the Rev. R. W. Halvorsen, R. F. Engwall, and O. E. Morken.

Fred Webber succeeds Lillian Franzen as director of social work of the Lutheran Welfare Society. He is a graduate of the school of social work at the University of British Columbia.

RUSLER'S MARKET
GROCERIES - MEATS
VEGETABLES
Garfield St. Parkland

dimes in time will grow into

Thrift is Part of Your Education

Open a Savings Account NOW

LAKWOOD BRANCH
PUGET SOUND NATIONAL BANK
MAIN OFFICE - LINCOLN K STREET - LAKWOOD
MEMBER FEDERAL DEPOSIT INSURANCE CORPORATION - FEDERAL RESERVE SYSTEM

Remember us . . . when you need printing programs, cards, ribbons, pamphlets, tickets, etc. . . . that's our business!

GRanite 7100

LaCrosse Printers
PRINTERS FOR YOUR COLLEGE
Located across from the Triple X at 118th and Pacific Avenue

TACOMA 44
WASH.

U. S. POSTAGE Bulk Mailing **PAID** Non-Profit Organization Permit No. 51

CALL HA. 3372
for **Sanitone Approved** Cleaning
City-wide **Daily Pick-up and Delivery Service**

FASHION CLEANERS
3820 South Yakima

Courtship TIME

ANY TIME IS

Romance . . . and the stars in their eyes are matched by the warmth and brilliance of the Courtship Diamond Ring on her finger. Set in any one of a wide selection of exquisite mountings, a quality Courtship diamond signifies everlasting love. And each one is registered and insured.

For nearest COURTSHIP jeweler and brochure, write COURTSHIP, P. O. Box 1914, Seattle 11, Washington