

Dedication Ceremony Starts 'Knighthtime'

The 1960 Homecoming weekend begins officially on Friday, October 14, with the Anniversary Dedication convocation at 10:00 a.m.

Drs. Foss and French Featured Speakers Friday

Following the academic procession of faculty and guests, Dr. H. L. Foss, president of the North Pacific District of The American Lutheran Church, will dedicate the new Tacoma-Pierce Administration Building. Dr. C. Clement French, president of Washington State University, will speak. Music for the program will be provided by the PLU Concert band and the Choir of the West.

Coronation Schedule Is Varied

Judging of the dormitory decorations is set for 3:00 p.m. Friday afternoon. At 8:00 p.m., the coronation will commence with Rev. Lowell Knutson, Alumni Association president, officiating. The queen will be crowned and captains Lou Blaesi and Bruce Alexander will be knighted for the game.

Music will be provided by the band and various members of the student body. The pep rally and bonfire are set for 9:30 that evening on lower campus, with a coffee hour planned for the alumni.

Saturday's activities begin with the 9:00 a.m. Powderpuff game on lower campus. At half-time Handsome Harry will be crowned and freshmen and sophomores will have a tug-of-war. Dr. J. C. K. Preuss will speak at the unveiling of plaques in the Administration building at 11:00 a.m.

Band to Introduce New PLU Song

PLU will meet Western Washington College at Lincoln Bowl, 1:30 p.m. During half-time a new PLU song will be introduced by the marching band directed by Prof. Gordon O. Gilbertson, as the drill team marches under the leadership of Pat Mullen with a special flag-wirling exhibition. Dorm decoration winners will be announced.

Dr. Louis B. Perry will speak at the Alumni Homecoming Banquet, planned for 6:00 p.m. in Chris Knutzen Hall. Curtain time for the Alpha Psi Omega presentation of "Romanoff and Juliet" is 8:00 p.m. in CMS.

Open House from 1:00 to 3:00 p.m. Sunday

On Sunday, Dr. J. W. Ylvisaker, president of Luther College, will present the sermon at the 11:00 a.m. Festival Worship service. Decorations may be viewed at open house from 1:00 to 3:00 p.m.

Dr. Fredrik A. Schiotez, will speak at the Festival Program, which will begin at 3:30 p.m., including the academic and clerical procession. Musical selections will be provided by the Concert Chorus.

Dr. S. L. Swenson, president of the Columbia Conference of the Augustana Lutheran Church, will present greetings as the weekend ends with the 7:30 performance of the Choir of the West and Concert Orchestra.

Music Library Opened To Students Weekdays

Erickson Music Library (CMS-215) is open every weekday afternoon to all PLU students, according to the following schedule: Monday, periods 7 and 8; Tuesday through Friday, periods 6, 7, and 8.

This library offers a selection of disc and tape recordings of all student and faculty recitals of the past school year, and may be played at request by aCrol Teslow, music librarian.

There are special reference books not found in the main library, and reference volumes of piano music and a few periodicals (such as the American Guild of Organists publications). Besides being for the use of students on assignment this library is open to anyone with leisure time.

Gubernatorial Candidates Debate On Public Issues in Spokane

Incumbent Governor Rosellini and Lloyd J. Andrews will debate in Spokane, Tuesday, October 11.

Each candidate for the office of governor of Washington will have ten minutes in which to outline his position. Then there will be an opportunity for each man to ask three questions of his own choice to his opponent. Following this, questioning will be open to the audience.

The debate will take place in Gonzaga University's 700-seat Student Union Building. Dr. Franz Schneider, chairman of the University's Town and Gown Forum is in charge of arrangements and rules for the feature.

News has just been released that KPLU, Channel 2, PLU's closed circuit television station, will broadcast a debate on "Capital Punishment" on October 25, in the afternoon. There will be a panel consisting of four students: Jack Olson, Ray Gallie, Jim Snyder, and Gina Jones.



MOORING MAST

FRIDAY, OCTOBER 7, 1960 — PARKLAND, WASH.

VOLUME XXXVIII

NUMBER II

Alpha Psi Sets Homecoming Stage For Comedy 'Romanoff and Juliet'

"Romanoff and Juliet," a take-off on Shakespeare's "Romeo and Juliet," will be the play presented this year as a highlight of Homecoming, on October 13 and 15.

Two performances are scheduled, one Thursday at 8:00 p.m., and the other Saturday at 8:30 p.m., in the CMS. Both performances are open to students, but the alumni will be given the first choice of seats on Saturday.

Students are encouraged to attend the Thursday evening performance. Price of admission will be 50 cents for students with student body cards and 75 cents for adults.

The play, sponsored by Alpha Psi Omega, dramatic honorary, in connection with the homecoming committee, is under the direction of Zane Wilson, with Fred Bindel as assistant director.

Written by famous playwright and actor Peter Ustinov, "Romanoff and Juliet" is a modern comedy in three acts. It takes place in the smallest country of Europe, which hasn't declared its stand with either the Western or Communist powers. Two ambassadors, Russian and American, live in the country, each trying to win it for his side.

As in "Romeo and Juliet," the

children of the two opposing factions fall in love. Romanoff, the son of the Russian Ambassador, falls in love with Juliet, daughter of the American Ambassador. The outcome is a series of situations, as the two attempt to solve their problem.

Thirteen student actors make up the cast. They are: first soldier, Paul Wold; second soldier, Roger Brewington; General, Ray Gallie; American Ambassador, Dennis Knutson; Russian Ambassador, Larry Iverson; wife of the American Ambassador, Pris Hutcheson; wife of the Russian Ambassador, Carolyn Moelling; Igor Romanoff, Merle Overland; Juliet, Judie Tweitzen; the spy, John Tietz; the Archbishop, Andy Carlson; Freddy, Bob Johnson; and Marfa, Karen Fischer.



PRACTICING A SCENE from the Homecoming production of "Romanoff and Juliet" are Merle Overland, Igor Romanoff, and Dennis Knutson, the American Ambassador.

STATE EDUCATION GROUP TO MEET HERE OCT. 14

The Washington Association of Non-Tax-Supported Colleges and Universities will meet here October 14. Attending this meeting will be the presidents and other representatives from the conference. Dr. Eastvold is president.

National Debt Exceeds World's Total Deficit

Data has recently been released by the Chamber of Commerce of the United States stating that the United States national debt of \$290 billion exceeds the combined debts of all other nations in the world by \$47 billion.

It was also revealed that the national debt has been growing three times as fast as the combined national debts of the rest of the world and is seven times its 1939 size.

Poetry Magazine Accepting Entries

Compilation of the fourth semester anthology of outstanding college poetry was recently announced by the American College Poetry Society.

Contributions must be the original work of the student submitted to Alan G. Fox, care of the Society. The entrant's name, address, and school must appear on each page.

Poems, which may deal with any subject, may not exceed 48 lines, nor may one person submit more than five poems. All entries must be post-marked not later than midnight, December 9, 1960.

Contact Carol French for further information.

The National College Teachers' Association is also accepting works. Deadline for this is Nov. 5, with no limitation set as to length or subject matter. Prizes are offered.



QUEEN NADINE I (fourth from left), elected in final voting by the student body on Wednesday, was handed the Knights' sword yesterday in chapel as she was announced queen of the 1960 Homecoming. Her two princesses are among those also nominated for queen (from top clockwise): Sandra Tynes, Karen Hegstad, Doris Johnson, Sonja Jacobson (princess), Janet Gulleckson, Evelyn Yates, Queen Nadine, Darlene Storkson, Susie Olson (princess) and Joan Cornell.



TO THE POINT

College Entrance Board tests will be administered in the J. S. chapel, 8:00 a.m. - 12:00 p.m., tomorrow.

* * *

"Seven Brides for Seven Brothers" will be the campus movie tonight, with "Sayonara" and "Will Success Spoil Rock Hunter," scheduled for tomorrow night in the J. S. chapel.

* * *

Mt. Rainier will be the scene of the Linne outing, tomorrow, 8:00 a.m. - 5:00 p.m. Contact Wayne Hill, ext. 83, for rides.

* * *

French Club officers are: Fred Bindel, president; Ruth Walker, vice-president; Isaria Kimambo, treasurer; and Bonnie Coglia, secretary.

* * *

Songleaders for 1960-61 are Lois Cornell, Pat Mullen, Judy Perry, Sharon Phelps, and Judy Thelman.

* * *

Recruiters from WAC and WAVE will be in the CUB lobby this afternoon, 1:00 - 4:00.

* * *

Knightbeat, November 4, is billed as "the greatest spectacle of the year" by the committee.

* * *

Karen Espland and Julie Sanderson will be in the Student Body office period 7 Monday-Friday, managing the lost and found.

* * *

Spurs will sell mums for Homecoming Monday night October 10, and at lunch and dinner through the week. Price is \$1.25, including delivery. A few will be on sale Saturday morning, October 15.

* * *

A loan fund is available to all women students at the Business office. Terms are: 25c for loans up to \$10.00, for two weeks, and 25c for overdue loans.

* * *

German and French clubs are sponsoring language luncheons at noon and dinner, respectively, during which members will eat together and all conversation will be in German or French.

* * *

Co-rec will be in the gym tonight and Saturday night from 7:30 to 9:30 p.m.

* * *

LSA will meet in Chris Knutzen Fellowship Hall Sunday evening from 6:00-7:15. Dr. Solberg will speak on "Sin, Sex and Psychoanalysis."

* * *

PLU will be the site of the Pacific District Lutheran Brotherhood convention in the CB-200 beginning at 10:00 a.m. tomorrow.

* * *

Bowling League begins today at 4:00 p.m. Contact JoAnn Corey, ext. 351; Loren Hildebrand, LE. 1-2116; or Ted Meske, LE. 7-5120.

* * *

Need anything? Ads are posted regularly on the CUB bulletin board.

Scholarships Deadline Set

November 1 will be the final date to apply for some 800 Fulbright scholarships for graduate study or research in 30 countries. Inter-American Cultural Conventions awards for study in 17 Latin American countries have the same filing deadline.

Recipients of Fulbright awards for study in Europe, Latin America, and the Asia-Pacific area will receive tuition, maintenance and round-trip travel. IACC scholarships cover transportation, tuition, and partial maintenance costs.

General eligibility requirements for both categories of awards are: U. S. citizenship at time of application, a bachelor's degree or its equivalent by 1961, knowledge of the language of the host country, and good health. A demonstrated capacity for independent study and a good academic record are also expected.

Anyone desiring additional information about either of these scholarships should contact Professor E. M. Akre, Fulbright adviser for PLU.

Debates Continue

Presidential candidates Senator John F. Kennedy, Democrat, and Vice-President Richard Nixon, Republican, will meet tonight in their second debate in a series of four to be televised nationwide. This program will originate in Cleveland.

Your City

Council Votes On Garage Bill

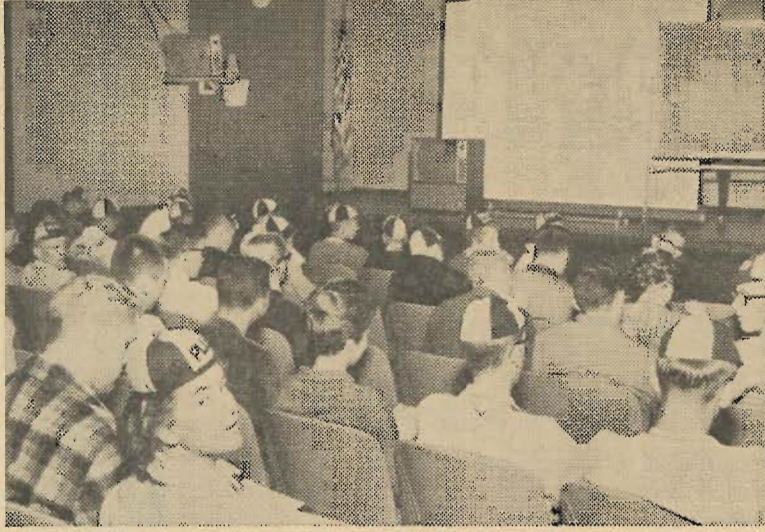
Financing for a two million dollar parking garage project still promises to be a controversial issue before the Tacoma City Council as another South Side business organization, the South Tacoma Off-Street Parking Association, Inc., made known its opposition to the proposal.

Although voting on the issue has been deferred twice now, and pressure has been applied to the Council in an effort to bring it to a vote of the people, the Council postponed action once again at their last meeting due to the absence of two members.

Another proposal facing opposition is one for the creation of three new building ordinances providing for construction on the freeway, one of which would permit the erection of a 7½-acre shopping center, already proposed by a local realtor.

Because of the congestion additional commercial businesses will add on the freeway, the South Tacoma Business Club and the Pierce County Businessmen's Association have joined in an attempt to block the issue for freeway zones.

PATRONIZE OUR ADVERTISERS



PLU STUDENTS await their class lecture over the new closed circuit television system. This is only one of the eight class periods a week taught by this new method.

KPLU Closed Circuit Television Broadcasts Chapel Programs

Eight class periods a week, and every chapel hour, KPLU Channel 2 television goes on the air.

Three professors—Dr. Charles Anderson, chemistry; Professor Theodore O. H. Karl, speech; and Dr. William Strunk, biology—devote their time to this program.

Their lectures are prepared a week in advance, with preparation on each lecture about eight to 12 hours. Each professor must then work with the visual people and the producer-director. In addition, a complete dress rehearsal period is run on every class lecture. Each show takes a crew of eight people.

While planning is now complete, the television setup is operating below its maximum capacity. Some equipment is yet to come, including a new hand ground camera lens. Several engineers are here from New York this week to adjust all the equipment.

Many new television hookups continue working and training for eight or nine months before they are able to broadcast. It was significant that PLU television had a picture on the screen for only 15 minutes before Dr. Anderson gave the first lecture.

Future possibilities for PLU are unlimited—evening programs of news, announcements, campus devotions, club and class usage, and recreational activities.

Help becomes a problem in the development of this system. Students are being trained as engineers, directors, and technicians. For the first time, this week a student director was used for chapel broadcasts.

As Professor Karl, project director for the Ford Foundation, stated during his recent chapel address, "Class teaching on television is no longer an experiment." He added that educational television saves neither money nor teachers, but it aims at quality.

Karl emphasized, "With the flexibility of our television installation, we will expand PLU television projects as we are able to train workers."

YOUNG'S Gift Shop

SCANDINAVIAN GIFTS

516 Garfield LE. 7-5559
(Across from Old Main)

Lutheran College Acquires Maps

Upsala College, East Orange, New Jersey, has recently begun broadcasting on a closed circuit radio system. The station will have continuous daily broadcasts, and complete coverage of all Upsala football contests.

* * *

Dana College, Blair, Nebraska, is the recipient of the Thorsten Hanson collection of over 100 colored maps of Denmark, one dating back to 1629. This collection, which has been on exhibit in a number of American cities, was presented to the college by the Swedish American Steamship Line of New York, and will be used as reference material for college courses in Scandinavian history, literature, and language.

LAURINAT'S Apparel

We Outfit Coeds

406 Garfield LE. 7-5317

GERRY'S BARBER SHOP

SPECIALIZING IN FLAT TOPS

112th & Park Ave., at I.G.A.

WHAT'S WHAT for WHO'S WHO On Campus

CORDUROY AND CANVAS SNEAKERS

All Popular Colors

PIGSKIN

"HUSH PUPPIES"

For Him or Her in Hound Dog or Loden Green

Art's Shoe Shop

(Across from the Parkland P. O.)
Open 9 a.m.-6 p.m.; Friday 'til 9 p.m.

ALSO EXPERT SHOE REPAIR SERVICE

Children's Theatre 'Rumpelstiltskin' Opens on CMS Stage October 20th

The magic world of make-believe comes to life on the CMS stage when the Children's productions presents the fanciful story of Rumpelstiltskin. The colorful children's play, by Charlotte Choerpenning, is designed and directed by Eric Nordholm who has announced the following cast:

Don Seavy plays the part of the wicked Rumpelstiltskin; Kristina Pernu is Mother Hulda who has given him his magic powers; Nadine Bruins is the miller's daughter whom Rumpel helps spin straw into gold; Ruth Hurd is the miller's wife, and Phil Goldbeck is the miller; Claude Canfield and Neil Christianson play the two courtiers of the king, Gothal and Ingert, respectively.

Gary Diel is the greedy-minded king, Merlin Thorson is the king's son, and Elaine Everette plays Karen, the sister to the prince; Eleanor Bousfield is the nurse, and Sandra Hieren, the lady in waiting.

The age old tale unfolds the story of Rumpelstiltskin who wishes a king's baby to put in his pot so that he may rule the hearts of men, filling them so full of greed that they will destroy each other. Looking over the earth from his hilltop he sees a miller's daughter who will win a prince for her husband if she can spin straw into gold as she has boasted she can.

When the child is born, Rumpel appears to claim it, but she persuades him to give her another chance. He offers her the chance to keep the child if she can guess his name. When, in the nick of time, she confronts him with the name, he flies to pieces in a rage.

SAVE \$\$\$

at campus FOOTWEAR headquarters

PRESENT THIS ADVERTISEMENT FOR A

10% DISCOUNT

ON YOUR NEXT PAIR OF SHOES PURCHASED AT

Soine's

411 Garfield Street

Al and Mal Soine

THIS SPECIAL STUDENT OFFER EXPIRES JUNE, 1961



"COKE" IS A REGISTERED TRADE-MARK. COPYRIGHT 1958 THE COCA-COLA COMPANY.

BMOC*

*Big Man On Campus—yea man! He treats the gals to Coke. Who can compete with charm like that. So if you're 5'0" and a little underweight, remember—you don't have to be a football hero to be popular. Just rely on the good taste of Coke. Put in a big supply today!



BE REALLY REFRESHED

Bottled under authority of The Coca-Cola Company by Pacific Coca-Cola Bottling Company, Tacoma, Washington

PARAGON PRINTERS, INC.

FINE PRINTING - LITHOGRAPHY
11802 PACIFIC AVE. PHONE LE. 7-7100

by Dick Halvorson

Probably the most fascinating issue to watch in the coming Presidential election is the religious problem. This issue will not really decide the election outcome, because the losses and gains of votes between the two candidates will balance out. But this issue does allow for several interesting interpretations.

This article has been purposely documented so as not to raise any animosities. All quotations are from a speech and answers given by Senator John F. Kennedy on September 12, 1960, to the Houston Protestant ministers, unless otherwise indicated.

Separation of Church and State

Kennedy began his speech by stating, "I believe in an America where the separation of church and state is absolute—where no Catholic prelate would tell the President, should he be a Catholic, how to act, and no Protestant minister would tell his parishioners for whom to vote—where no church or church school is granted any public funds or political preferences—and where no man is denied public office merely because his religion differs from the President who might appoint him or the people who might elect him."

This statement of Kennedy's, who, incidentally, is a Catholic over whom many Protestants have had "doubts," is the summation of the Catholic's view of a President in relation to his Vatican superiors and the United States.

Protestants' View

On the other hand, some Protestants have been pointing out that the Roman Catholic Church teaches that it has power over all aspects of their members' lives and that this infers control over a Catholic's political actions, also; thus the Catholics do not believe in separation of church and state which is a sacred American doctrine.

On these grounds the Protestants were able to effectuate the defeat of Al Smith, a Catholic, in the Presidential election of 1928. And on the same grounds they do not find it desirable to allow Kennedy the 1960 victory.

Kennedy's Position

Now, Kennedy has answered that he does believe in separation of church and state. Furthermore, he has said, "But if the time should ever come—and I do not concede conflict to be remotely possible—when my office would require me to either violate my conscience or violate the national interest then I would resign the office."

Continuing, he said, "I ask you tonight . . . to judge me on the basis of fourteen years in Congress . . . on my declared stands against an ambassador to the Vatican, against unconstitutional aid to parochial schools, and against any boycott of public schools . . . which I attended myself. And instead of doing this, do not judge me on the basis of these pamphlets and publications we have all seen that carefully select quotations out of context from the statements of the Catholic Church leaders, usually in other countries (where Communism and Fascism is a threat), frequently in other countries, and rarely relevant to any situation here, and always omitting, of course, the statement of the American bishops in 1948 which strongly endorsed church-state separation, and which more nearly reflects the views of almost every American Catholic."

Significance of the Issue

From a poll taken by John Kraft, a New York political writer, in *The Sunday News Tribune* and *Sunday Ledger*, Tacoma, Washington, September 25, 1960, it was discovered that only 23% of the voters thought the religious issue of any significance; 74% found the issue of no value in the election; and 3% were undecided.

The American Jewish Congress stated, "If a candidate is opposed by some voters because of his religion, it is inevitable that he will be supported by others for the same reason."

From the *Christian Century*, a nondenominational Protestant weekly, September 21, we have the statement:

"The religious affiliation of candidates is legitimately an issue only in proportion to other issues. It is one factor among many which should be taken into account in the choice of a President. But when it is magnified out of all proportion to its proper dimensions, when it becomes the only issue considered, it becomes a smoke screen of evasion and must be blown away if we are to recover our intelligence and walk humbly with our God."

In closing, I would like to state that I have been rather heavy on one side of this issue, not because I necessarily agree with that side, but because as a Protestant institution such as this the "other" view is usually more predominate.

Next week: the Foreign Affairs Issue.

LITTLE MAN ON CAMPUS

by Dick Bibler



Frosh Venture Views

by Ann Schnackenberg

After surviving three days of the most humiliating of all tortures, the Class of 1964, commonly termed "frosh," have been accepted into the student body of this institution.

By now, new students and freshmen, de-bibbed and de-beanied, have had a glimpse into some of the phases of life on the university campus, and have formulated opinions, both pro and con, on their observances. All of the students interviewed were very much impressed by the friendly atmosphere and kindred spirit at PLU.

Comments Susie Dahl, "It's great!" and Phil Yokers adds, "At first everything seemed so distant, but now we recognize more faces and have really become a part of the school."

Anita Coolidge has found her favorite spot and says, "The coffee shop is a marvelous place to write letters and meet people."

The size of the campus influenced many freshmen in choosing PLU because, according to Polly Anderson, "We can get to know more people well, rather than just a few people casually."


Don Seavy agrees with Polly and also adds that, "Chapel is a very enjoyable part of the day." Students have an eye to spiritual values as well as social conditions; "At PLU we are offered a well-rounded education, not only mentally but spiritually as well," Elaine Olsen states.

Attitudes toward the daily menu were somewhat mixed although the general consensus of opinion sympathizes with the responsibilities of the dietician. Hank McKune complains, "The lines are so long that we work up an appetite just standing there."


However, Sheila Jensen praises the situation by saying, "The food is terrific, if you don't have to look at the calories."

Freshmen have already become involved in many activities, including music and sports. Dorm teams can be seen scrimmaging in the quadrangle or on vacant lots.

One of the many musically inclined frosh admits, "That Fritts is really funny, so chorus is some class!"



MOORING MAST



Editor.....David Crowner
 News Editor.....Ann Haggart
 Reporters: Margy Eash, Donna VanGilder, Lavonne Erdahl, Deanna Hanson, Eleanor Bousfield, Judy Kragh, Carol French.
 Feature Editor.....Ruth Walker
 Reporters: Alice Wenness, Judy Munger, Dick Halvorson, Ann Schnackenberg, Deanna Hanson.
 Sports Editor.....Kent Tekrony
 Reporters: Bob Rydland, Creighton Germeroth, Randy Stime, Bob Matson, Mike McIntire.
 Intramurals.....Gordy Gradwohl
 Make-up Editor.....Larry Iverson
 Photographers.....Frank Netter, McKewen Studio
 Business Manager.....Warner White
 Ad Manager.....Deanna Haugland
 Advisor.....Mr. Milt Nesvig
 The Mooring Mast is published weekly during the school year by the students of Pacific Lutheran University. Subscription price: \$3.00 per year. Phone LEnox 7-8611.

A Suggestion

Becoming A Student

Twenty-three of the top students from around the world are your classmates at PLU. Please become acquainted with at least one and take time to converse with him.

These collegians are here to learn all they can, part of which means becoming as well acquainted as possible with people of the United States. You are here to learn all you can, part of which means being inquisitive into the views and opinions of others on campus.

Thus, in order to be a real student, which we hope is your intention, it is almost imperative that you strike up friendships with those here from other lands.

Dave Crowner, editor

Campus Political Clubs Stress Issues, Action

College educated youth must "help the political life of the nation soar as high as human wisdom can make it."

Two new organizations on campus find themselves coming into existence at a most crucial point in history, and conveniently so, for these are the Young Democrats and Young Republicans.

Political Science Club acted as sponsor for these two groups, with planning beginning last year. Now these groups are on their own, and will receive recognition as student clubs.

They receive contributions from the Citizenship Clearing House, a nationwide organization to encourage students to be active in politics. Dr. Donald Farmer is on the board of directors for the Washington Citizenship Clearing House, and it was through his recommendation that our political groups receive support.

The campus political organizations will give students a chance to look at the candidates, the parties, the issues, and U. S.-world relationships. It is hoped that students will become actively involved in politics, throughout the year as well as at election time, and recognize the responsibility that is ours.

Programs will offer speakers on the national, state and local levels, as well as opportunity for student discussion.

Before election time, a straw ballot will be taken on campus. Voting machines and/or ballots from the Republican and Democrat central committees in Tacoma will be used.

The Young Republicans are forming a "Youth for Nixon" group on campus. Their aim will be to create increased interest in Nixon and promote his election.

The clubs will meet each week until election time, with regular meetings being held twice a month. Both groups are still in the organizational stage. At their next meeting, Young Democrats will adopt a constitution and elect officers. Temporary president is Robert Finch, and Peter Ristuben, new to history department this year, is advisor. Roger Hildahl heads the Young Republicans. Advisor is Dr. Paul Vigness, with Dr. Vernon Utzinger serving as honorary advisor.

Increasing tension, expectation and loyalties will build up in the weeks to come. It is important that the student recognize political needs and responsibilities, not only at election time, but throughout the months and years and decades.

A man by the name of Lincoln once said, "Our reliance is in the love of liberty which God has planted in us. Our defense is in the spirit which prized liberty as the heritage of all men, in all minds, everywhere."

Dear Editor:

Congratulations on a fine first edition for this university year. More specifically, a word of praise for your effort to arouse more student interest in the current political race.

The article on page three, "The difference between the Democrats and Republicans," was very good. I was very happy to see such an informative and unbiased article in this campus's newspaper. I am looking forward to the next few articles on the six issues outlined in this initial article. A tip of the hat to Dick Halvorson.

Another fine article was on page two concerning the past and up-coming television debates of the two Presidential candidates.

Thank you very much for the fine picture on page two of our candidate, Senator John F. Kennedy. I do not think it represented an endorsement, but the publicity is helpful.

Yours truly,
 Robert J. Finch, president,
 Young Democratic Club

New Professors Express Opinions; Cover Education and Christianity

by Judy Munger

Rene Descartes' reasoning, "I think, therefore I am," could be pursued, with imagination, to the point where one might say, "Tell me something of what you think, and I will know something of what you are."

The Mooring Mast, in order to introduce you to those faculty members new this year to the PLU campus, has asked the following profs to discuss briefly a question relating to his or her field of study. We hope you are "pleased to meet" these personalities as revealed through their ideas . . .

DR. DONALD ZIEMKE, Professor of Religion, last year in graduate study at Princeton University.

"In your opinion does the role of a Christian conflict with that of a citizen?"

"I do not believe the roles conflict unless Christianity is interpreted as a fleeing from the world. This view is not found in traditional Lutheranism, although it may be found inside currents associated with Lutheranism. The same is true for Christianity in general.



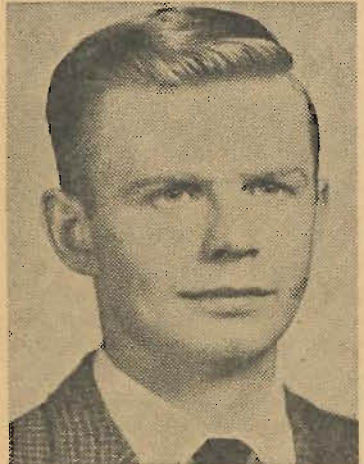
Dr. Donald Ziemke

"The God in Whom we believe is the Creator of an orderly heaven and earth. Men have a government for the purpose of keeping this order, to facilitate man's life in peace and harmony. There must be organization of the state, just as there must be organization of the church. If it is wrong in the one case it is wrong in the other."

MR. JOHN AMEND, Dean of the School of Education, previously with the Highline School District in Seattle.

"What is the general school reaction to graduates in education from PLU?"

"My experience has been that PLU graduates are considered highly desirable candidates for positions in public schools. In fact, our attitude in the Highline District was



Mr. Sven Winther

that we couldn't get enough of them!

"Several of the reasons for this preference are related to the training program of Pacific Lutheran. First, we find that the graduates are adequately prepared insofar as a

knowledge of youngsters and of how to work with them. Secondly, PLU teachers generally adjust quickly and readily to the school situation, probably because of the practice teaching program that is a part of the students' training. Finally, a balanced knowledge of the grade levels other than their own gives these students a more complete perspective and allows them to become an integral part of the total faculty team.

MR. PAUL STEEN, Professor in the department of Speech, formerly producer-director of Channel 6 KVIE in Sacramento.

"In your opinion, would many of today's politicians be called good speakers?"

"In my opinion, many of today's politicians would be called just that—politicians. Not statesmen and certainly not speakers. Many—but not all."

MISS JEANINE MORAVEC, English instructor, formerly teaching at Grand View College, Iowa.

"Do you believe that there is a lack of cultural and traditional background in America that contributes to a de-emphasis of the classical studies?"

"From the time of our necessarily utilitarian 'founding fathers' America has been developing a rich cultural heritage of its own so that today we boast writers, musicians, and artists to rival those of any other country. I would attribute our de-emphasis of the arts more to our competition with Russia in other fields.



Mrs. June Broeckel

"I believe, however, in the seriousness and importance of instilling a concern for a wide variety of fields, including the arts as well as the sciences. Certainly we have been at times in our history willing to let our concern become one-sided in favor of the sciences; nevertheless we cannot claim a lack of cultural heritage."

MR. SVEN WINTHER, Instructor in Psychology from graduate school and intern studies in Oregon.

"Can nations be neurotic?"

"Yes, definitely. Not only other groups as well—for instance, colleges! Groups, just as individuals, have personalities, and thus can have personality problems. This is spoken of as institutional neuroses."

MRS. JUNE BROECKEL, Education instructor from the DuPont School District.

"What are the most important qualities in a teacher?"

"I would say, first of all, patience. To this I would add understanding, tact, firmness, and humility. A teacher must be a good listener, have a sense of humor, and must be able to love many different types of people. The term, 'healthy personality' might sum it up."



BOB GROSS (left) catches Linda Knutzen, and Mike Norris backs up Barb Prideaux in one of their cheer leading routines used at the football games. These four took over the yell leading positions after a student body vote two weeks ago.

PLU Cheerleaders Keep Spirit High, Yells Loud

by Alice Wenness

Four peppy people combined their experiences and talents last week to try out and eventually win the election for our new Pacific Lutheran University Cheer Leaders. These four are Bob Gross, Linda Knutzen, Mike Norris, and Barbara Prideaux.

Bob, the only senior of the group, was a cheer-leader in his sophomore year at Pacific Lutheran. He is presently secretary of the Associated Men Students and a member of the Choir of the West. He is a pre-dental student.

Linda, a sophomore majoring in education, was a cheer leader and a song leader at Burlington-Edison High School. She is presently in May Festival and also French Club.

Mike, a sophomore majoring in psychology, was a cheer leader his sophomore year at Milwaukie High School, Milwaukie, Oregon. He was also vice-president of his high school student body and the captain of their football team. He is now in May Festival.

Barb, a sophomore physical education major, was a song leader last year at Pacific Lutheran. She is presently in Spurs and also in May Festival.

Each of these four tried out be-

cause someone else persuaded them.

Linda's room-mates thought that she was "right" for the job because of her over-abundance of energy. It seems that she likes to get up in the morning and just scream to let off steam. They thought her screaming could be put to better use as a cheer leader.

Barb tried to persuade Mike that he would make a good cheer leader and in turn he persuaded her that she would also.

Then Barb, Linda, and Mike all got together and persuaded Bob. This completed the foursome. They plan to combine their talents in creating new yells and adding a lot of zest to the old ones. They've promised to be at every game. Will you?

Board Meets Thursday

This evening President Eeth Eastvold is guest speaker at a banquet at Whitworth College in honor of its president, Dr. Frank Warren.

Preparations are being made for the meeting of the Pacific Lutheran Board of Regents next Thursday. In connection with it, Dr. Sidney Rand, head of college work for TALC, will speak in chapel.

STELLA'S FLOWERS

Flowers for All Occasions

12173 PACIFIC AVE. LE. 7-0206
(Foot of Garfield) We Deliver

PIANO LESSONS

MY HOME

11707 S. Pacific Avenue
LE. 1-0296
\$1.50 a half hour

RECORDS

LP's, Singles — large selection at

ABC ELECTRONICS

325 Garfield Street

Free Bonus Records for Record Club Cards

SKIP'S PIZZA PARLOR

SERVING PIZZA EXCLUSIVELY

Lots of Free Parking

5040 SOUTH WASHINGTON

HOURS: 5:30 'TIL?

ECON-O-WASH

12171 Pacific Avenue

Wash 20c, Dry 10c

SHIRTS AND DRY CLEANING

Centre Cleaners

415 Garfield

LAUNDRY AND
DRY CLEANING

Students Desiring

PART-TIME EMPLOYMENT

contact Bud Harlow, Mgr.,

Gene's Car Wash

3210 South Tacoma Way

TOWNE HOUSE

Donut Bar and Quick Lunch

HOME-MADE PIES AND
DONUTS TO GO

Order Today for Tomorrow



This is the B-52. Advanced as it may be, this airplane has one thing in common with the first war-galleys of ancient Egypt... and with the air and space vehicles of the future. Someone must chart its course. Someone must *navigate* it.

For certain young men this presents a career of real executive opportunity. Here, perhaps *you* will have the chance to master a profession full of meaning, excitement and rewards... as a Navigator in the U. S. Air Force.

To qualify for Navigator training as an Aviation Cadet you must be an American citizen between 19 and 26½—single, healthy and intelligent. A high school diploma is required, but some college is highly desirable. Successful completion of the training program leads to a commission as a Second Lieutenant... and your Navigator wings.

If you think you have what it takes to measure up to the Aviation Cadet Program for Navigator training, see your local Air Force Recruiter. Or clip and mail this coupon.

There's a place for tomorrow's leaders on the Aerospace Team.

U.S. Air Force

MAIL THIS COUPON TODAY
AVIATION CADET INFORMATION
DEPT. SC010

BOX 7608, WASHINGTON 4, D.C.

I am between 19 and 26½, a citizen of the U.S. and a high school graduate with _____ years of college. Please send me detailed information on the Aviation Cadet program.

NAME _____

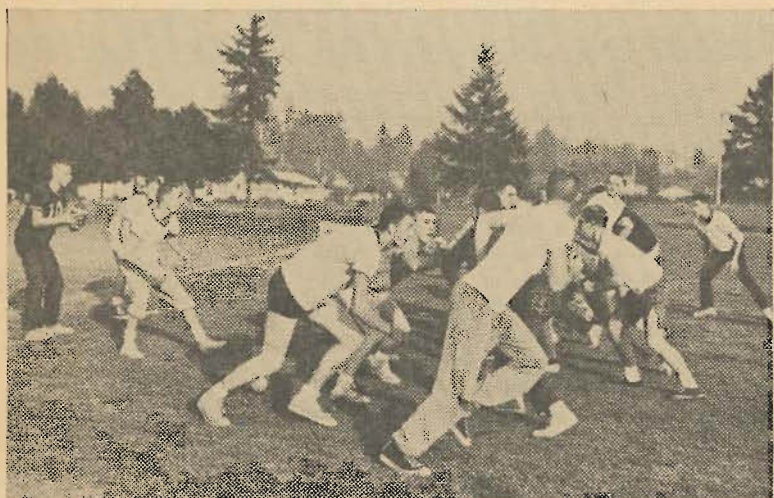
STREET _____

CITY _____

COUNTY _____ STATE _____

— Daybreak —

ACCENT ON CAMPUS SPORTS



4TH FLOOR 24, 2ND FLOOR 0—4th's quarterback, Garner Hanson, looks for his receivers as 2nd's line rushes in Tuesday's game. Halfbacks in action for 4th are Bob Mattson and Marlin Pierce, 4th's linemen are (l. to r.) Duane Meske, Paul Christman, and Stan Fredrickson.

Intramural Football: Evergreen Heads Heap

4th Floor Upsets 3rd Floor, 18-12

4th Floor, led by the passing of "Snard" Hanson and the sure-fingered receiving of Duane Meske, dropped 3rd from the unbeaten ranks last night. Hanson threw for three TD's to Meske. Lloyd Soine, Gerry Evanson, and Jerry Poppin were standouts on the line.

Al Bloomquist held 3rd together with a kickoff return for a 52-yard TD, and a scoring pass-play to Dan Bechtel.

Thursday's other game saw the Basement thump 2nd Floor 36-6. Bill Peterson threw for four TD's and Jim Boeshans threw for two. Scoring were Gary Jonson, 6; Larry Peterson, 12; and George Lechner, 18. A Jim Baker to Hanson Bay (?) pass scored 2nd's only touchdown.

Evergreen Edges Eastern

Evergreen, relying on Frank Waterworth and Gary Olson for their two TD's, squeaked by Eastern, 12-6, Monday. Eastern's defense bottled up Evergreen's offensive unit, but Evergreen managed to keep possession of the ball through most of the game and pushed over two big ones. Eastern's only tally came on a Don Siquiefield to Gary Shaw pass-play.

Evergreen (12)—Waterworth (2 passes), G. Olson (12), Reep, Lensing, Jon Olsen, Ashpole, Bakken, Ruud, R. Anderson, Kieland, L. Peterson, Lindholm, Haaland, Lehman, Savage.

Eastern (6)—Shaw (6), Siquiefield (pass), Ken Larson, Les Peterson, D. Eilsum, Hildebrand, Flamoe, Lerch, S. Hagen, Walter, Dunlop, Flatness.

Also Monday's action saw Western down the Annex, 18-6. Leo Eliason, at the quarterback spot for Western, threw two TD's and Pete Gahlhoff, halfback, threw for one. Norm Dahl, Hagerty, and Ralph Carr each scored one. For the "Tulips," their fullback, Castleberry, scored on an end run.

Western (18)—P. Gahlhoff (pass), J. Malmin, Dahl (6), Hagerty (6), John Johnson, Carr (6), L. Eliason (2 passes), I. Eliason.

Annex (6)—Kasperson, Castleberry (6), Selfors, J. Curtis, C. Larson, Ranken, Zimmerman.

4th Floor Dumps 2nd Floor

Tuesday's action saw the 4th-2nd game, figured even, go to 4th Floor, 24-0. Garner Hanson threw for three TD's to Meski, Henson, and Fredrickson; Bob Mattson scored 6 on a 16 yard run.

4th Floor (24)—G. Hanson (3 passes), D. Meski (6), J. Henson (6), B. Mattson (6), J. Evanson, L. Soine, Fredrickson (6), Christman, M. Pierce, J. Laird.

2nd Floor (0)—Flaskerud, Enger, Lundring, Niemi, M. Jacobson, Ditt-rich, Soderbalm, E. Anderson, Hanson Bay (?).

The Basement pulled off another rout against 1st Floor, 54-2, but there was a distinction in this one; 1st scored as Appel caught the Basement quarterback, Bill Peterson, in the cellar. But other than that, Bill threw for six TD's: two to Quam, three to George Lechner, and one to Tom Alden. Boeshans after tossing to Christianson for 6 ran over one for himself; Germeroth scored on an intercepted pass from Denny Gudal, 1st's QB.

Basement (54)—B. Peterson (6 passes), P. Quam (12), G. Lechner (18), Christianson (6), Boeshans (6 pts., 1 pass), Germeroth (6), Alden (6), Lohn, Jonson, L. Peterson.

1st Floor (2)—Appel (2), Gudal, Robb, Schmitz, Sandburg, Howard, and Foss.

Evergreen Wins Fourth Straight, Downs Western

Evergreen, spotting Western 12 points in the first 6 minutes of play, came on like M-Squad in the second half to win going away, 36-24, Wednesday. Western's Ivar Eliason sparked Western on defense, intercepting two Evergreen passes and batting three more to the ground. Big Ralph Carr, the poor man's Gulliver, led the Western line in rushing the Evergreen passers. Leo Eliason and Pete Gahlhoff threw for two TD's each, to Hagerty, Muser, Dahl, and Gahlhoff.

Frank Waterworth picked up four TD passes and ran one over himself in a brilliant second half performance. Also scoring were Ruud, Ernst, and Lensing. Evergreen's dormant offense in past games finally came to life as they downed their strongest contender for the league title; 3rd Floor lies ahead on October 24th.

In other action, 1st Floor forfeited to Eastern. Can't hardly blame 'em for it, but remember, two forfeits and you are out.

INTRAMURAL FOOTBALL STATS

Evergreen has moved up through the ranks with four straight wins and no defeats to take the league lead. Their last victory came on Wednesday, 36-24, over previously unbeaten Western.

Standings through Wednesday

Team	W	L	PF	PA
Evergreen	4	0	92	36
3rd Floor	2	0	80	12
4th Floor	2	1	96	24
Basement	2	1	84	20
Western	2	1	62	42
Eastern	2	2	8	32
2nd Floor	0	2	12	60
Ever. Annex	0	3	6	49
1st Floor	0	4	2	165

Jack Lensing, Evergreen, and Stan Fredrickson, 4th Floor, top the league in touchdowns scored with five apiece. Stan's team-mate, Duane Meske, is close on their heels with four.

Individual Scoring

Name and Team	Points
Lensing, Evergreen	30
Fredrickson, 4th Floor	30
Meske, D.; 4th Floor	24
Rorem, 3rd Floor	18
Johnson, L.; 3rd Floor	18
Wahl, Western	18
Christianson, Basement	18
Lechner, Basement	18

In the passing department Garner "Snard" Hanson and Frank Waterworth are neck and neck with an even dozen. Hanson picked up eight in 4th Floor's 66-0 rout of 1st. Bill Peterson of the Cellar, with ten, is tight in third spot.

INDIVIDUAL PASSING

Name and Team	TD Passes
Hanson, G., 4th Floor	12
Waterworth, Evergreen	12
Peterson, B., Basement	10
Gahlhoff, J., Western	5
Eliason, L., Western	4

After Hours

The reason no one ever gives the groom a shower is that everyone figures him to be all washed up anyway.

The current re-emphasis on education in our colleges is typified by one Western university which has ruled that no athlete be awarded a letter unless he can tell at a glance which letter it is.

Affirmation of an ancient proverb comes from a sporty acquaintance of mine who assures me that two heads are indeed better than one, especially when they happen to be on the same coin.

Race Track—a place where wind-down clean people.

We've just learned a secret method for returning from Las Vegas with a small fortune: go with a large fortune.

A friend of ours has come up with the David and Goliath cocktail—a small one and you're stoned!



HANSON TO HENSON—"Snard" Hanson hit big Jim Henson on this play which set up 4th's first score. Right end Gerry Evanson throws a key block, down field are Mattson and Lloyd Soine.

Grad Gabs

by G. G. Gradwohl

Mark Salzman has informed me that the "Decathlon Club," begun last year, will again function this year. No one has chucked it yet. It is open to all men with a 2.00 gpa or better if they can pass all of the following events:

- 100 yard dash in :11.6
- 120 yard low hurdles in :16.0
- Mile run in 6:00
- Running high jump at 5 feet
- Running broad jump, 17 feet
- Shotput (16 lb.), 30 feet
- 20 foot rope climb in :12.0
- Baseball throw, 250 feet -or- Javelin throw, 130 feet
- Football punt, 120 feet
- 100 yard swim in 1:45
- Front Hand Spring
- Hand stand for :10.0
- Fence vault, chin high

One varsity letter may be used as a substitute for any one event. Those men who did not finish their events last year may do so now. Certificates will be awarded upon completion of all events, anyone interested contact Mr. Salzman.

The question has a gain been raised regarding the Married Men and Tacoma IM districts—as previously stated these districts have been dropped. Eastern and Western have absorbed these districts with Park Avenue as the dividing line.

New York and Pittsburgh play in the World Series: Kruschev has been pushed back to the 2nd page in the Pitt papers, and Pirate fans are lugging around placards exclaiming: "Yankee go home!", topped with Confederate flags.

Well back to the drawing mat . . . !

George Pikes

Also

Intramural action: Season 5/6

Monday:

2nd Floor over Eastern
Western over 1st Floor

Tuesday:

Evergreen over Annex
3rd Floor over Basement

Wednesday:

3rd Floor over Eastern
Western over 2nd Floor

Thursday:

Annex over 1st Floor
Basement over 4th Floor

Season 0/2

PLU plays Eastern in Cheney Saturday night. DO NOT, I repeat, DO NOT hurt my pocket-book this week!!

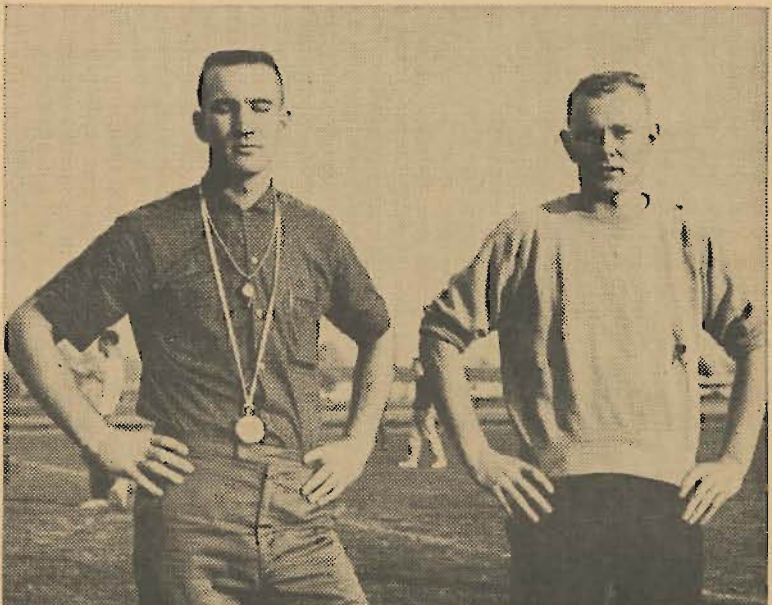
PLU over Eastern by 12 points.

The above also goes for dismal Washington. I wouldn't give a plug nickel for any Navy-ROTC cadet at the U. This week they take on the "medics" of Leland Stanford U., at Palo Alto. A pound of swiss cheese to the winner:

Washington over Stanford by 3 points.

IM Comments

This column will be reserved for readers' comments regarding intramurals. We hope it will be more successful than the letters to the ed in the Daybreak of yesteryear. So let's hear from you, anything about intramurals or sports in general. Address: G. G. Gradwohl, Box 313, Campus Mail.



IM FOOTBALL OFFICIALS—Jerry Curtis (left) and George Lechner assist Gradwohl and Salz in supervising this fall's football games. A little sleepy, Jerry?

Knights Seek Second Win, Under Lights At Cheney

McClary Tops In Offense

After three games, Doug McClary, PLU quarterback, is leading his team in total offense with 469 yards. Seventy-two of these yards have come by rushing, while Doug's right arm has accounted for 369 more.

Bruce Alexander, senior halfback, leads the Knights in rushing with a total of 175 yards and a 4.7 yards per carry average. Bruce's understudy, sophomore Ron Ratliff, is holding down second place with 72 yards for a 4.0 yards per carry average.

The Knights have bettered their opponents in every department except that all-important department, the scoreboard. Opponents have outscored PLU by a margin of 54 to 45. After winning one and losing two the statistics show that the PLU eleven has a total output of 906 yards while holding its opponents to 715 yards. The Knights have also moved for 48 first downs compared to 40 for the opposing teams.

Last year's all-league end, Dave Bottemiller, is off to another good start, grabbing 17 of McClary's passes for 171 yards. Bill Lennon, who has the knack for hauling in the long passes, has scored two touchdowns and caught ten passes for 168 yards.

Other statistics recently released shows Gary Nevers averaging 29.2 yards a punt and Jack Cocchi leading in interceptions with two and an average run back of 175 yards. Alexander, McClary, and Lennon have all crossed the goal three times to lead in this department. Dicky (do) Johnson has kicked 3 extra points out of seven attempts.



PUGET SOUND FULLBACK (23) Dick Pruett signals referee for time out in fleeting seconds of last Saturday night's game at Lincoln Bowl. At this point in the game the score was tied 14-14 after three quarters of Evergreen Conference play. Don Keppler (60), PLU linebacker, and Bob Brodhun (85), defensive halfback, are shown in the action.

Meet Bruce Alexander

by Creighton Germeroth

Bruce Alexander, co-captain of the football team along with Lou Blaesi, is a senior majoring in education.

Bruce comes from Franklin-Pierce



BRUCE ALEXANDER
Halfback (co-captain)

High School in Tacoma where he was named to the All-State teams in both football and basketball.

Bruce has proved to be an outstanding athlete in college also. Since coming to PLU he lettered three times in both football and basketball.

Alex is a hard-running halfback who can run around opponents as well as over them. His ball carrying in the British Columbia game was a major factor in the Lutes' 19-13 victory.

Bruce, equally adept with a basketball in his hands, scored 306 points last season for a 13.5 average. He is expected to be a major contribution to PLU's basketball hopes this year.

On the lighter side of things, Bruce lists fishing and model airplanes as his hobbies.

Upon graduation, Bruce hopes to follow one of two careers—either teaching of YMCA work.

Game Results

All Evergreen Conference football teams were active last week-end. After one game of league play Whitworth, Central, and UPS stand undefeated.

Whitworth 40, Eastern 13
Central 19, Western 3
UPS 21, PLU 14

AP Rates 'Em

1. Ohio University (Athens, Ohio)
2. Lenoir Rhyne (Hickory, N. C.)
3. Lehigh (Bethlehem, Pa.)
4. Massachusetts U. (Amherst)
5. Whitworth (Spokane, Wash.)
6. Texas A. & I. (Kingsville, Tex.)
7. San Francisco State (S. F., Calif.)
8. Western Illinois (Macomb, Ill.)
9. Muskingum (New Concord, O.)



BOB BRODHUN (85) misses tackle on UPS runner as another Knight closes in. Number 23 is UPS fullback Dick Pruett. UPS won the game 21-14.

Savages Starving for Win; George Stephens Ace Passer

Pacific Lutheran's Knights journey to the "Savage Land" to encounter the Eastern Washington eleven tomorrow night. Game time is 8:00 p.m.

Coach Ed Chissus' charges are still hunting for victory number one. Previous games ended in 12-6 loss to the College of Idaho, and a 25-6 setback at the hands of powerful Humboldt State. Last week the talented Denny Spurlock and the Pirates of Whitworth scalped the Savages 40-13.

There are 17 J. C. transfers along with 13 returning lettermen. Eastern has switched from the Split-T to the Winged-T in order to serve up a more varied attack.

Stephens Poses Threat

Pass defense may be the key word for PLU. Coach Chissus is reported to have an ace passer in George Stephens. George, a 6-ft., 180 pound J. C. transfer, throws long and short aerial bombs with equal dexterity. Coupled with the "arm" are two speedy halfbacks by the names of Dave Milam, 5 feet, 8 inches, 150 pound junior, and John Bass, 5 feet, 10 inches, 180 pounds, from Wenatchee Valley College.

Dave Crowell, a bruising 195 two-way senior, is the leading yard gainer. He belted out a 21-yard average to carry the first two times out, and played defensive tackle with equal zest.

Davis Rated High

Eastern observers are also high on Dave Davis, an all-conference fullback as a freshman with a knack of diagnosing the enemy. Larry Liberty, a 5 foot, 11 inch, 176 pound sophomore, is the leading pass defender.

Line Averages 187

Chissus will field a relatively light, but aggressive, line at around 187 pounds. Bill Palmer and Dave Crowell at tackles, with Rich Hilty at center, last year's stalwarts, form the nucleus of the offensive line.

Chissus in his eighth year at Eastern has racked up a record of 27 wins, 28 losses, and 3 ties. Including the 27-6 loss to last year's PLU Knights.

Pacific Lutheran will lodge at the Desert Hotel in Spokane. The team will return to Parkland Sunday evening.

Loggers Edge Knights in Final Seconds

Dreams of getting off on the right foot in the rough Evergreen Conference race were erased from the Pacific Lutheran University grid slate by a last minute touchdown.

Playing the villain role was long-time rival University of Puget Sound. The Loggers tallied with 39 seconds remaining in the game to eke out a 21-14 victory in a league opener last Saturday night at Lincoln Bowl.

A crowd of 3,451 watched on as Logger quarterback Jerry Hoxey bucked over from the one yard line to snap a 14-14 deadlock, which had stood throughout the final half.

The Lutes showed signs of winning their second straight game during the first half as they jumped to a 14-7 margin late in the second period. UPS, just as they did in the end, pulled the "big" play with 40 seconds remaining on a 20-yard aerial from Jerry Thacker to Ed Tingstad to tie the score.

Coach Jim Gabrielsen was well pleased with his squad, which was forced to operate without the services of front-liners Bruce Alexander and Dave Reynolds. Alexander was forced from the contest with the flu, while Reynolds had to sit this one out with a bad knee. Substitutes Ron Colton and Ron Ratliff played like real "pros."

Doug McClary tallied both PLU touchdowns in the second quarter on

runs of two and one yards. Both drives featured the running of Ratliff and McClary, in addition to the precision passing of McClary.

UPS scored first on the first offensive drive of the night on a 30-yard pass from Thacker to Tingstad.

In the statistics department, the Loggers totaled 324 yards rushing and passing to 255 for PLU. Ratliff was the Knights' leading rusher with 48 yards and McClary passed for 98 yards. Bill Lennon pulled in 7 passes for 107 yards.

Fellows Develop Player Nicknames

Names you read in the football program might not be the ones you would hear if you were out on the field with the team. During the weeks together, the fellows develop a set of handles quite unique, and expressive.

For instance, John Aune has been tagged "Lard." Another lineman, Norm Juggert, is affectionately called "Jughead," and the players give Marv Snell the name "Green Giant."

If you call out "Dicky Do" you should get a response from Dick Johnson, while "Flash" is the call-out for Warren Lee. Doug McClary, quarterback, has been assigned "Thunderfoot," and Ken Knotson has the title "Brute."

Ron Ratliff's name is shortened up, and it comes out "Ron the Rat," and then there is the familiar handle for Dave Reynolds, "Rabbit."

And most folks have heard the nickname for two of the coaches. Common version of Mark Salzman is "Salz" and the shortened version of Gabrielsen comes out "Gabe."

RUSHING STATISTICS

	Total Offense	Rush	Pass	Total
McClary	88	72	397	469
Alexander	38	175	0	175
Ratliff	18	72	0	72
Reynolds	26	63	0	63
Cocchi	3	1	53	54
Shahan	14	27	0	27
Colton	11	20	0	20
Zoffel	1	8	0	8



by "The Knife"
COLLEGE DAYS

Jim Gabrielsen attended Concordia College in Moorhead, Minnesota, from 1948-1952. Jim was a four sport letter winner at Concordia, lettering in basketball, baseball, hockey and football . . . Gene Lundgaard attended PLU from 1947-1951 and made quite a name for himself by starting and lettering on the basketball team for four straight years. Gene played on the first PLU basketball team to go to Kansas City for the Nationals . . . Mark Salzman attended Carthage College in Southwest Illinois from 1941 to 1947 with a three year stint in the service breaking up his college career. Mark lettered in football, basketball and track. His best event was the 440 with a time of 48.6.

BASKETBALL

Basketball turnouts will begin October 17 with a night practice. Some of the new faces will be Marv Fredrickson, all state first team from Burlington-Edison; Jon Malmia, all conference from Franklin Pierce; Mike Heley and Dennis McPolen from West Seattle; Al Perry and Nate Stime from Lincoln High in Seattle by way of LBI; Hansen Bay from the championship team at Renton, and Pete van Konynenberg from Modesto, California. Gene Lundgaard, head basketball coach, is expecting big things of this freshman group.

DID YOU KNOW

Marv Snell is a logger in the summer . . . Brian Wooten has a brother on the U. of W. football team . . . Ron Ratliff, from Clover Park High School, placed fourth in the 100-yard dash in the state meet last year.

Mike McIntyre