

# ASPLC Retreat Starts Today

One hundred Pacific Lutheran student leaders will leave tonight to attend the first annual three-day Leadership Retreat at Lutherland on Lake Killarney.

The Associated Student Body is sponsoring the first annual meeting of this type.

Two representatives from each organization on campus are expected to attend the meet along with class officers, Associated Women Student officers and Student Council members. The dean of the college, dean of men, dean of women and class advisers will also attend.

Plans for the retreat have been made specifically to help student leaders learn their duties and im-

prove leadership. Thus, the campus organizations will run more smoothly, according to Jim Bullock of the general committee.

Six discussion groups will be led by students and faculty. Each person attending the sessions will be in one of six groups which will rotate among the six leadership training groups.

Tom Unmacht will lead one group on "How to Share Responsibilities," Don Douglas on "Parliamentary Law," Jay Tronsdale on "Learning the 'Ropes'," Dr. Vernon Utzinger on group dynamics, Jud Sodergren on "A Student's Relationship to College Ideals," and Dr. Kristen Solberg, also on group dynamics.

General committee members for

the retreat are Jim Bullock, Bob Larson and Joan Ruud. Committee chairmen include Connie Thompson, general secretary and registrar; Jim Bullock, transportation; Bob Larson, business manager; Bob Gross, recreation; Dave Dahl, music; Ken Gamb, religious activities; Tom Unmacht and Merle Metcalf, advisers from standards committee.

Sunday morning worship service will be held in the camp chapel with the Rev. John Kuethe in the pulpit.

Activities for the weekend, besides training sessions, include evening campfires and singspirations. Meals will be served by the camp staff and the facilities of the camp will be open to the group. Sportswear will be the dress for the weekend.



SEGMENT OF THE MOB waits patiently in one of many registration lines. In this typical scene these unidentified freshmen are helped by upperclasswomen, seated left to right, Audry Hart, Louise Kraabel and Anita Hilleland.

## Administration Reveals Parking Restrictions

New parking regulations will go into effect Monday at PLC. And they will be strictly enforced, according to the announcement by Mr. Cecil Vance, assistant to the president.

Parking tickets, issued by the new college traffic patrol, will give "teeth" to the rules. A fine of one dollar will be assessed violators.

Tickets will be given out for parking in any unauthorized area. These areas include the College Union Building street frontage plus other restricted areas on Wheeler street; campus driveways, which are reserved for official business and will be closed to the student driving except at the beginning and ending of semesters and vacations; the faculty parking lot across from the library, which is open only to faculty cars displaying the permit; and the area behind Old Main, which is for faculty and business use only.

Tickets will also be given out for any other violation of the law in the campus area.

Emphasizing the compactness of the campus, Mr. Vance urged that students park in the lots across from Old Main and next to the gymnasium. "The purpose of the regulations and enforcement is to help keep our campus attractive, reduce traffic congestion and prevent abuse of the driveways and parking areas," he concluded.

## Variety Show Starts 8 p.m. at CMS

Tonight at 8:00 in the CMS Auditorium the Associated Artists will present the annual variety show. According to Robert Fleming, long time president at PLC, the show will be one of the best yet. Fleming, who is introducing the extravaganza, announces the theme of this year's show as "Just Variety."

Insofar as it is possible the show will use the facilities of the CMS as background for presentation by Lynda Eryckson, Fleming, Lollie Ihlenfeldt, Herb Dempsey, Carol French, Sylvia Sodergaard, and many others. Fleming has also announced that the event may be attended admission free.

## AWWS Plans Tea for New Coeds

The annual Big-Little Sister Tea will be held at 3:30 p.m. Thursday in CB-200. The program will start at 4:30.

The purpose of the tea is to acquaint transfer and freshmen coeds with the upperclass women. A big sister is assigned a little sister each year, and the big sisters assist the little ones with problems they may have concerning college and inform them about PLC.

Phyllis Pedersen, vice-president of Associated Women Students, is general chairman of the tea. Those acting as chairmen of the various committees are: Sylvia Fything and Helene Kelly, program; Maria Moe, decorations; Barbara Isaacson, refreshments; Alice Jessen, publicity; and Marion Kelly, invitations.



NEW FACULTY AND STAFF INITIATION to PLC became official at the annual Freshman-Faculty Reception. Sharing reactions to PLC are, seated left to right, the Rev. Kenneth E. Christopherson, Mr. Richard Scott, the Rev. Stewart G. Govig, Mrs. M. J. K. Fuhr and Rev. Fuhr. Standing, left to right, are Dr. Paul Reigstad, Mr. Hugh Thompson, Mr. Kenneth Black, Mr. Gene Lundgaard, Miss Ruth Moe and Mr. Jim Gabrielson.

# PACIFIC LUTHERAN COLLEGE mooring mast

Volume XXXVI

Parkland, Wash. September 26, 1958

Number 1

## New Faculty Begin Year at PLC

Fifteen persons have been added to the PLC faculty and staff for the school year.

Three members have been added to the physical education department. Miss Ruth Moe, who returned to PLC after getting her master of arts degree at University of Washington, is again teaching girls' P.E. She has previously taught at Centralia High School and Junior College and in Tacoma. She began teaching at PLC in 1955.

Jim Gabrielsen is the new head football and baseball coach. He also teaches men's P.E. He has taught and coached in Midwest high schools and was a coach and instructor at St. Olaf College, Northfield, Minn., prior to coming to PLC. He received his B.A. from Concordia College, Moorhead, Minn., and his M.A. from New York University.

Also new in the P.E. department is Gene Lundgaard. He is a former PLC basketball star, and has coached at Franklin Pierce High School in Tacoma. Lundgaard is head basketball coach and assistant football coach in addition to teaching physical education. Lundgaard and Gabrielsen fill the coaching posts previously held by Marv Harshman,

who now is chief basketball coach at Washington State College.

The Rev. Kenneth Christopherson and the Rev. Stewart G. Govig are new additions to the religion department. Rev. Christopherson graduated from Augustana College, Sioux Falls, S. D., and has a bachelor of theology degree from Luther Seminary, St. Paul, Minn. He has been doing graduate work toward a doctorate at the University of Minnesota.

Rev. Govig received his B.A. degree from St. Olaf College and a bachelor of theology degree from Luther Seminary. He has been studying theology on a Fulbright Scholarship at the University of Oslo during the past year. He has a master of theology degree from Princeton Seminary.

New English instructors are Dr. Paul Reigstad and Mr. Kenneth Black. Dr. Reigstad received his doctor of philosophy degree in English at the University of New Mexico spring commencement. In addition to teaching there, he has taught at the University of Minnesota, North Dakota State College and PLC. Mr.

Black, a graduate of the University of Washington, succeeds Mrs. Mayfield in the English department.

The Rev. Johannes Schiller is in the sociology department. He received his master of arts degree in sociology from the University of Kansas this summer. Mr. Schiller is a graduate of Capital University and Seminary, Columbus, Ohio, and recently served a parish in Leakey, Kansas.

Dr. John Holum, recently head of the chemistry department of Augsburg College, Minneapolis, is now on the PLC staff. He received his B.A. from St. Olaf College and his doctor's degree from the University of Minnesota. He was attached to the chemical warfare laboratories in Maryland during his two years in the army.

In the business administration and economics department Mr. Hugh O'Hara Thompson replaces Dr. Herbert Axford, who accepted a position at the University of Alberta. Mr. Thompson has been on the staff of the University of Arkansas and the U. of W. A retired officer, he has served in the navy for more than 20 years.

Mr. Charles Haydon is an addition to the foreign language department at PLC. He will be an instructor in German and Latin. He has been head of the foreign language department at Arlington College in Texas for 17 years.

New psychology teacher this year is Mr. Richard Scott, who has a B.A. from Southern Methodist University. He has also studied theology at Boston University and recently served a parish in Lyons, Oregon. Last Wednesday morning the Scotts had an addition to their family—Anne Elizabeth Scott.

New houseparents have also been added to the PLC family. The Rev. and Mrs. M. J. K. Fuhr are serving as housefather and housemother at Old Main. Mrs. Olga Marquardt is taking the place of Mrs. Agnes Kuethe as housemother in South Hall.

# PACIFIC LUTHERAN COLLEGE *mooring mast*

Editor..... Dick Londgren  
 News Editor..... Herb Dempsey  
 Sports Editor..... John Hanson  
 Feature Editor..... Solveig Leraas  
 Business Manager..... Mary Lou Engen  
 STAFF—Barbara Isaacson, Janice Dahl, De Anna Hanson, Reta Rempt, Dick Fisher, Jack Holl, Gail Erickson, Carol French, Ann Haggart, Martha Edwards, Carol Teslow, Barbara Brinkley, Priscilla Hutcheson, Dick Halvorson, Ming Yee Wang, Audrey Hart, Sharon McAllister, Helene Hoeger, Rudy Sander, Barbara Beckner, Karen Toffle, Lee Turner, Sharon Van Rooy, Joyce Olsen, Doreen Grimm, Vicky Rue, Carol House, Harry Sannerud, Stu Peterson, Jim Beals, Joyce Norlin, Virginia Karlstad.

Adviser..... Mr. Milton Nesvig

## Cultural Lag at PLC

Various tests, such as running over hot coals or braving a lineup of flailing clubs, were employed by ancients to prove a person's worth. And today there is the PLC throwback to antiquity—registration.

Registration is a limbering-up exercise for a long, rigorous semester. Patience, persistence and courtesy in the face of extreme frustration are but a few of the myriad values taught by this experience. Furthermore, this Medieval-type torture is a unique form of entrance examination protecting PLC standards; the harrowing obstacle must be faced by every student every year.

But can American youth, softened by prosperity, meet the severe standards of their antecedents? Already a few faint-hearted, cowardly students are corrupting the whole system. This subversive element sidesteps part of the test by registering late, despite the added fee. And these mercenary creatures rationalize that much money can be earned in the time that others spend standing in line.

Although a stop-gap measure, using additional workers, expedited the process this year, definite steps need to be taken to mollify the hardships of registration. Possibly it could be streamlined by the combined efforts of the administration and the Student Council.

—DICK LONDGREN

## 'Tortilla Flat' A Pleasant Escape

By Barbara Jackson

Want to get away from it all? Move vicariously away from the academic world via John Steinbeck's delightful novel, "Tortilla Flat."

The main plot evolves around Danny and his acquisition of property, a broken-down shack. His new prestige and abode soon attract a host of friends who willingly share his roof. Philosophical Pilon, for instance, drinks up Danny's wine to save friend Danny from its ill effects. And the miser Pirate, living only with his faithful dogs, is added to the cozy group primarily because of one attribute, his hidden money. The final outcome of Danny's house and its inhabitants is as logical as it is surprising.

Steinbeck wrote this book, not from a patronizing point of view but on Danny's level, to show how men "merge successfully with their environment." For a completely new and different outlook on life, plus picturesque treatment of the mundane, this novel makes excellent reading.

## PLC Men Evacuate Ivy Hall; Girls Fight Frogs, Football

By Solveig Leraas

"Are you living down there in that dump?" is the disparaging remark hurled at the coeds now living in Ivy Hall.

Cautiously defending the place previously thrust upon the men, the new Ivy Leaguers cite many specious advantages. "This is called suburban living," they chirp. "And we have the golf course close by."

Blurting out further defensive comments before the cynics get a chance to retaliate, the ostracized coeds continue the enumeration: "We have TV. The gym is just across the street. And we're away from the hustle and bustle of upper campus."

Sneaking a word in, a disbeliever starts, "But it is such a long walk in the rain and . . ."

"But not every girl on this campus is awakened by the stomping of feet and slapping of hands. We get to see the football team do sunrise calisthenics in our back yard."

But the brave defense falters with the reminder, "You don't even have phones. And you can keep your nature-living with its frogs in the rooms and moths in the closets!"

These Ivy girls are adjusting to their plight; Jan Aust will lessen one hardship by riding a bike to class. Feminine decorations are slowly transforming this masculine cabin into a livable cottage.

And by early October still another convenience will be added—telephone lines connected with the college switchboard. Not daring to favor the fair sex, these lines will also reach to Evergreen Court and our inter-campus telephone system will be complete.



## Fleming sez:

By Bob Fleming

Heigh Ho! Trust you had a nice summer. Last week I went to the Fair. Saw three people shot out of a cannon. You have to admire people of that caliber.

Say, Frosh, now's the time to purchase one of my do-it-yourself cheating kits. Comes complete with erasable cuffs for your shirts, palm size, flesh colored scratch paper, undetectable, transistor, sub-miniature radio set plus a copy of the pamphlet, "Tried and True Questions Asked by PLC Profs," compiled over a period of the last eight years. See me for terms . . .

Book titled observed in Mr. Nordholm's bookshelf, "Thru the Nasal Passage with Gun and Camera" . . . or . . . "How to Avoid An Emotional Crisis While Selecting French Pastry" . . . Waiter (pointing to "No Dogs Allowed" sign): Go on outside. Shaggy dog (seated at table): Who's smoking? . . . Among the country's unmanageable surpluses are wheat, cotton and Girl Scout cookies . . . New Dept. Famous Sayings in History—"Hey, look! Those stupid Greeks left their wooden horse out there. Let's bring it into the city before they come back for it."

This year I am adding an Advice to the Lovelorn Dept. If you have problems, send them in; I'll do my best to answer them. Here's the first—Dear Mr. Fleming: Last nite I took my girl to Seattle. We went to a play and after that I took her to the most expensive restaurant in town. Arriving back in Tacoma I took her to the New Yorker for a snack. Then, at three o'clock in the morning, I took her right to her doorstep in a cab. Tell me, Mr. Fleming, should I have kissed her good night? . . . Dear Sir: No, you did enough for her already.

Overheard—"Well, if I called the wrong number, why did you answer the phone?" . . . Psychiatrist: Do you have trouble making up your mind?—Man: Well, yes and no. . . . Definition: AMBITION—Working your head off at a job you don't enjoy, in a place you don't like, trying to save money you can't keep, in order to spend your declining years in idle boredom that you can't stand at some place you won't like any better. . . . Well, with that happy that I take leave of you till next week. Hope to see you tonite at the variety show in the CMS Auditorium. As always, Uncle Bob-Bob.

## VALUABLE DISCOUNT COUPON

COURTESY DISCOUNT

10%

P. L. C. STUDENTS ONLY

This coupon entitles you (when presented with Activity Card) to 10% discount on your next purchase at SOINE'S SHOE STORE.

(This offer expires June 1, 1959)

CLIP OUT AND BRING IN WITH YOUR NEXT PURCHASE

## RAND *Troujums* KEDS for Sport



CAMPUS BOOTS 10.95

PLAIN TOE CLASSICS in black or cordo 9.95



GENUINE MOCCASIN Hand-sewn Vamp



Genuine moccasin laceless slip-on with Hand-sewn front. In Black or Brown 9.95



soft, mellow leather

DOZENS OF STYLES TO CHOOSE FROM \* FOR DRESS SPORT LEISURE \* QUALITY SHOES PRICED TO FIT YOUR BUDGET



WEDGIES Ties or Slip-ons 9.95-11.95

MEN'S All White or Black & White U. S. KEDS GYM & BASKETBALL SHOES "Big Leaguer"—5.95 "Duo-Life"—4.95



# Humboldt State Hosts Lute Eleven Tomorrow

Following a 9-6 defeat last Saturday at the hands of the College of Puget Sound Loggers, the Lute grid forces headed south this morning to take on the Humboldt State Lumberjacks tomorrow night at Arcata, California.

The Loggers' size and experience proved to be too much for the Lutheran forces last Saturday as they were outplayed on both offense and defense by their cross-town foes in the annual King's X Game.

Coach Jim Gabrielsen's single wing offense found it tough going in their initial outing. Neither team threatened seriously, however, until midway in the third quarter when Bob Austin broke away for 36 yards and a touchdown for CPS. Mike Cranston kicked the extra point and PLC trailed 7-0.

Later in the same period the Lutes' quarterback, John Jacobson, faded back to throw a pass and was tackled in his own end zone for a safety and two more Logger points.

It wasn't until the fourth period was underway that the Gladiators recovered a fumble on the CPS 35 and drove for their only score. Bruce Alexander carried the ball to pay dirt from four yards out.

Humboldt State, fresh from a 30-12 victory over the College of Idaho last week, will provide plenty of stiff going for the Glads tomorrow night.

The PLC traveling squad left early this morning by bus and plans to stay overnight tonight at Grants Pass, Oregon.

Twenty-three lettermen returned to the Lumberjack squad this year, and their coach, Phil Sarboe, thinks (Continued on page 4)

## Trampoline Added To P.E. Equipment

Among the new pieces of equipment added to the physical education department at PLC this year is a new trampoline in the gym, according to athletic director Mark Salzman.

The trampoline was installed last spring and was especially welcomed by Lutheran tumbling enthusiasts, stated Mr. Salzman. He went on to say that a new course is being offered Lute students this year in tumbling. The course is co-educational and is instructed by football coach Jim Gabrielsen.

## Intramural Football Will Begin Tuesday

Football teams from all over the campus will begin fighting it out for the intramural grid championship next Tuesday.

Teams from Clover Creek; Tacoma; second, third and fourth floors of Old Main; Evergreen Court; Western and Eastern Parkland; and the DeJardine House will battle it out under the direction of athletic director Mark Salzman and Gordon Gradwohl.

A schedule of games will be posted later this week.



Frosh Back, Val Barnes, attempts to haul in a Lutheran pass during last Saturday's game in Lincoln Bowl with the College of Puget Sound. The Gladiator football forces left this morning for Arcata, California, to meet the Humboldt State College Lumberjacks tomorrow night.

## KTNT To Broadcast PLC-Humboldt Game

KTNT radio station in Tacoma will broadcast the game between Pacific Lutheran College and Humboldt State College tomorrow night at seven o'clock. It will be a direct broadcast from KINS radio in Eureka, Calif. Radio station KTNT will also broadcast all the Lutes' games this season, both home and away.

Two home games of the Gladiator gridders will also be televised over KTNT-TV. The video games are with Western Washington on October 25, and Whitworth on November 15.



# Hap-hazarding

by Eugene Hapala

You witnessed a bit of the present, a bit of the future, and a bit of the past last week as you saw our Lutes drop their grid opener against cross-town rival College of Puget Sound by a score of 9 to 6. The present was the many new faces in uniform and youthful Coach JIM GABRIELSEN in their debut in Lute togs. The future is the hope that this young gridiron aggregation can keep up their hustle and improve as the season goes along. The past was the score that ended up in favor of the Loggers.

The future seems to be the rosier part of the game, so let us elaborate on that. Pacific Lutheran College is fielding a team that boasts only two senior lettermen. Sophomores and rosy checked frosh abound, and it is no small chore to whip these men into shape in just twelve days. Most of these fellows didn't know each other's names just two weeks ago. The job that Coach GABRIELSEN has done in that time has been fantastic.

He has the nucleus of an eager, hustling, and winning ball club. Rugged twice-a-day practice sessions and the CPS game has rubbed some of the "newness" off the new Lutes and we believe that they will go into tomorrow's game with a healthy attitude of giving it their all.

Now comes the part we hope the Lutes can prove false. While we hope that the Lutes will dump the Lumberjacks, we will have to pick Humboldt State over PLC by the score of 21 to 6. This score is by virtue of Humboldt's sound 30 to 12 thumping of College of Idaho last week.

## CPS WIN STREAK TO END

In other action tomorrow the one game winning streak of CPS will come to a halt when the Seattle Ramblers run rough-shod over the Loggers by a 27 to 0 score.

The University of Washington Huskies will be counting only their bruises tomorrow night after a sound 28 to 6 trouncing by the Gophers from the University of Minnesota in Minneapolis. Only the aerial minded Washington State Cougars give us a point to boast on in the Pacific Northwest after their 21 to 20 win over Northwestern in a game to be played in the Illinois stadium.

## PLC GRADS TAKE LOCAL POSITIONS

Several former Lute athletes fresh out of college have taken local teaching and coaching jobs. PLC 1957 grid Captain LYNN CALKINS is coaching at Puyallup Junior High, Lettermen's Club Prexy CURT KALSTAD is teaching and coaching at Federal Way, LUTE JERSTAD and TOMMY GILMER are at nearby Franklin Pierce, and TOM SAHLI has taken a position with the Highline School District.

## Save at SOINE'S CAMPUS FOOTWEAR HEADQUARTERS



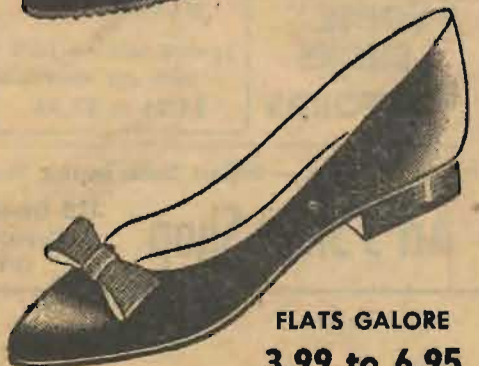
**GIRLS**  
U. S. KEDS  
GYM SHOES  
White  
3.95



LANCERS  
5.95-6.95



RIPPLE-SOLE CASUALS  
5.95-6.95



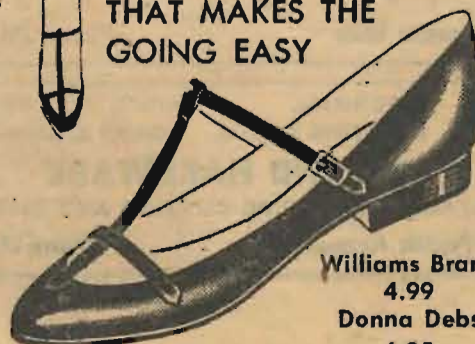
FLATS GALORE  
3.99 to 6.95



COMPLETE LINE OF  
SADDLES — BUCKS — LOAFERS



T-strap  
THAT MAKES THE GOING EASY



Williams Brand 4.99  
Donna Debs 6.95

411 Garfield Street  
1/2 BLOCK EAST OF OLD MAIN  
Al and Malcolm Soine

# Student Council Posts Swimming Pool Rules

The following are rules and safety measures passed by the Student Council to regulate the swimming pool:

1. Only regularly enrolled students and faculty at PLC will be allowed inside the fenced area.
2. No person will be permitted at any time in this pool unless at least two other persons are within the fenced pool area.
3. Only those with swimming attire will be permitted within the fenced area. All those in street clothes must remain outside of the fence.
4. No running will be allowed within the pool area at any time.
5. Only one person will be allowed on the diving board at a time.
6. At no time will shoving, pushing, or general horseplay be allowed in or near this pool.
7. Some type of street clothing must be worn over the swim suits when going from the dormitory to the pool, or from the pool back to the dormitory. This means shoes and a robe.
8. Sunbathing will not be permitted in the pool area.
9. No eating or smoking will be allowed in the pool area.
10. NO ONE WILL BE PERMITTED TO SWIM UNLESS A LIFE GUARD IS ON DUTY. A SIGN WILL BE PLACED IN A CONSPICUOUS PLACE TELLING HIS HOURS.

## Student Personnel Office Readies Counselors for 1958-59 Work

The student counselors play a large part in the life of any college student. They are picked by the Deans of Men and Women for this important job. The men and women chosen for this work are responsible to their house-parents, and to their respective deans. Their jobs consist of welcoming, listening to, and generally overseeing all the students on their floor or in their house.

The women counselors have a few other duties to fulfill in addition to those of the men. They serve desk duty during the year, are in charge of lock-up, and help their "floor" to remember the "quiet hours."

Men counseling this year are: Ken Gamb, Bob Erickson, Konrad Koosman, Don Schultze, Richard Halvorson, David Dahl, Paul Templin, Byron Scherer, and Dick Foege in Old Main; Dave Lunde and Glenn John-

son in Evergreen Court; Herb Dempsey, Student Resident Head at Clover Creek Hall; James Warren, Student Resident Head, Adelphon Hall.

This year the women counselors are: Lois Anderson, Marilee Anderson, Mary Carruthers, Myrna Hall, Carol Johnson, Darlene Kelly, Carol Pfanekuchen, and Jean Ulleland in North Hall.

Others are Janet Chesley, Barbara Isaacson, Barbara Jackson, Lois Juedes, and Evelyn Noss in South Hall; Carolee Chindgren and Phyllis Pederson in Ivy; Phyllis Fiske, Barbara Jacobson, Eileen O'Callaghan, Janice Oldham, Nancy Reinvik, Esta Swanson, Sylvia Taaje, and Nancy Walker in West Hall; and Anita Gregerson and Arlene Kinard in Stuen.

## Miss Knutson Named Local AAUW Head

Miss Anne E. Knudson, a member of the PLC English department, was elected president of the Tacoma chapter of the American Association of University Women this summer.

The Tacoma chapter has 350 members, and PLC has been accredited by the AAUW for about two years.

The purposes of the AAUW, according to Miss Knudson, are three-fold: (1) to improve the status of women in business, industry and so forth, (2) to raise money for both national and international studies,

especially on the upper-graduate levels, and (3) to help improve conditions for women in the colleges and universities in the United States and throughout the world.

"Our women graduates are eligible for AAUW membership," Miss Knudson added, "and I sincerely hope that they join in goodly numbers."

## Lutes Face Humboldt

(Continued from page 3) this should be one of the school's best grid teams in many years. Later in the season the Humboldt team will fly to Hawaii to meet the University of Hawaii.

Sarboe has been coach at Humboldt since 1951 and has a 42-22-2 record at the Northern California school. He is a graduate of Washington State College and a former coach at Lincoln High School here in Tacoma.

## Alpha Phi Omega Meets Thursday Night

The Iota Beta chapter of Alpha Phi Omega will hold an open meeting for all men students next Thursday evening at 7:30 in L-104.

The Alpha Phi Omega is a national service fraternity composed of university and college students who are or have been affiliated with scouting.

The Iota Beta chapter is dedicated to the development of Christian life and service. Requirements for membership are: (1) scouting affiliation, (2) satisfactory scholastic standing, and (3) sincere desire to be of service.

All men interested in such a program are invited to attend the meeting to acquaint themselves with the members and activities.



NEW GLADIATOR GRID MENTORS this year are, from left to right: head coach Jim Gabrielsen, and assistants Mark Salzman and Gene Lundgaard. Gabrielsen has been coach at St. Olaf College in Minnesota for the last several years. Salzman was assistant basketball and head track coach here last year and this year is director of athletics. Lundgaard will coach the Lutes' hoop squad this year as well as assisting at football.

## Homecoming Memo

All clubs and organizations wishing to sponsor a candidate for Homecoming Queen must: (1) have their petitions turned in to proper authorities by Oct. 6, (2) be sure there are 50 signatures per petition, (3) submit 10 cents per signature or five dollars, and (4) only choose a junior or senior for a candidate.

All girls should remember the powder-puff and drill team turn-outs; definite notices will be posted later.

## Political Science Club Holds First Meeting

In the initial meeting Tuesday night, the political science club planned a tentative program to stimulate student interest in world affairs. Noted public officials speaking on campus is one goal, according to new prexy Jack Holl.

## Boarding Club, Coffee Shop Set Schedules

The PLC boarding club and coffee shop have announced the following hours for the fall semester.

Cafeteria (Boarding Club) Meal Schedule: Breakfast, 7:00-7:45 a.m., Monday through Friday; 7:30-8:15 a.m. Saturday; 8:30-9:00 a.m. Sunday.

Lunch, 11:35 a.m. to 12:45 p.m.  
Dinner, 5:30-6:15 p.m., Monday through Saturday; 12:30-1:30 p.m. Sunday.

Coffee Shop: Monday through Thursday, 7:30 a.m. to 10:00 p.m.

Friday, 7:30 a.m. to 12 midnight.  
Saturday, 9 a.m. to 12 midnight.  
Sunday, 4:30 p.m. to 10:00 p.m.

## Dear Editor:

Just a word concerning our "chlorophyll kids," namely the frosh. Since I am Lord High Election Chairman I would like to direct a compliment to the "new ones" for their vigorous campaign. We challenged them to wage the finest "ever" and I for one believe they succeeded. The fire and hustle that marked their bid for the various offices is both welcomed and needed; who knows, with enough spark they may even move our old bones to some overt commitment.

By overt commitment, I mean real action. Homecoming will soon be here and there will be some changes. For example, the floats (expensive and short-lived) have been replaced by campus decoration less expensive

and more lasting. Great things could happen if the fire of the Frosh could spread to the area under some of the upperclassmen. "Gung Ho!"  
—Al Ostreet

### SUPPORT OUR ADVERTISERS

#### STELLA'S FLOWERS

Flowers for All Occasions  
12173 Pacific Ave. LE. 7-0206  
(Foot of Garfield) We Deliver

#### LAURINAT'S apparel

We Outfit Coeds  
406 Garfield LE. 7-5317

## We Have Them!

- Girls', Women's
- FLATS
- LANCE'S
- T-STRAPS
- WHITE BUCKS
- OXFORDS

### "P-F"

GYM SHOES  
WOMEN'S LACE-TO-TOE REGULATION  
Oxfords—\$3.95  
Men's—\$4.95  
BOYS' & MEN'S HI TOPS  
Black and White  
\$4.25 to \$5.95

## Welcome Back To School, PLC

- Boys' & Men's
- HUSH PUPPIES  
Reg. 9.00—NOW 7.95
- DESERT BOOTS  
10.95
- OXFORDS  
8.00 AND UP
- WHITE BUCKS  
7.95 AND UP

— Expert Shoe Repair Service —

## Art's Shoe Shop

315 Garfield St. LE. 7-8771  
Opposite Parkland Post Office  
OPEN FRIDAY NIGHTS

STEAKS • CHICKEN • SEA FOOD

### Viking SMORGASBORD

9702 So. Tacoma Way Phone JU. 8-8785

ROOFING FORMICA PAINT PLUMBING  
ELECTRIC SPORTING GOODS GUNS & AMMUNITION

### PARKLAND HARDWARE

GLASS INSTALLATION - PIPE CUTTING AND THREADING  
121st and Pacific Avenue Phone LE. 7-3171

## 1959 Saga Staff Outlines Plans

An organization meeting for the Saga, PLC yearbook, is scheduled for Monday at 6:45 p.m. in the Saga office located in the CUB.

"Because of vacancies on the staff, even more people than usual are needed to help. Anyone who is interested, or who has had some experience along this line, is urged to attend the meeting," stated Teddi Gulhaugen, editor of the publication.

Many innovations are being contemplated for the 1959 Saga, she added. For instance, many full-color and duo-tone pages will be used and all 248 pages will be two-color. The Craftsman Press of Seattle, printer of the 1959 yearbook, will provide assistance and advice on layout, use of photography and art effects.

In order to cover spring sports and activities thoroughly, the Saga will be printed after the end of the school year and delivered during the summer.

Art Ellickson has been named business manager, but many other posts are still open.

## Skating Party Tonight

The annual APO skating party will be held immediately after the variety show tonight at the South Tacoma Roller Bowl.

Drivers with room should stop by the CUB about 9:00 for those needing rides.

ALL AROUND TOWN

We provide Checking and Savings Accounts and all other bank services for college students

LAKWOOD BRANCH WEST END BRANCH  
K-STREET BRANCH LINCOLN BRANCH  
MAIN OFFICE

PUGET SOUND NATIONAL BANK  
TACOMA'S FRIENDLY BANK  
FREE CUSTOMER PARKING  
MEMBER FEDERAL DEPOSIT INSURANCE CORPORATION