

# The Mooring Mast

VOL. 30

PUBLISHED BY THE STUDENTS OF PACIFIC LUTHERAN COLLEGE,

MARCH 20, 1953

NO. 18

## Cogburn, Douglass Rule Over Carnival

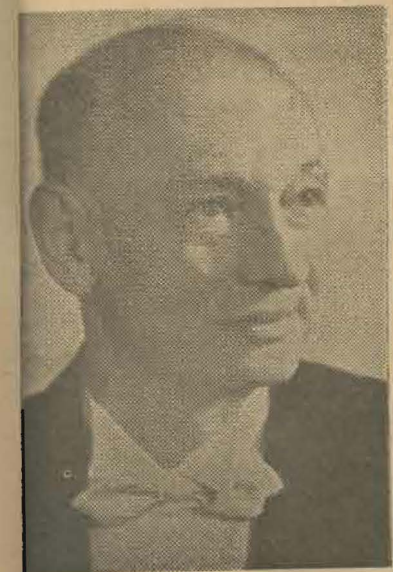
### Mayor Pomeroy Crowns Couple; Conductors Lead Guest Chorus

With Saga Festivities already underway Queen Jean Cogburn and King Ron Douglass, will attend the Saga Carnival in the PLC gymnasium at 9 this evening.

With Mayor Allan Pomeroy of Seattle crowning the blonde, blue-eyed queen and the king, the ceremonies were carried on in a regal manner. An honor guard of Spurs and Lettermen paraded in with the royalty.

The Normanna Chorus of Everett, Seattle and Tacoma sang six numbers, two directed by Harley Christopherson, PLC band master, and director of the Tacoma Chorus. The other four numbers were directed by Mr. Henry W. Ringman, who in the absence of Professor Gunnar Malmin has been appointed to direct the Normanna Choruses of the Puget Sound Area.

Talent of PLC students which supplemented the entertainment of the royalty included a reading by Jeanne Schief, a duet by Eleanor Hansen and Herb Neve and songs in three-part harmony by the "Rhythmettes." John Rydgren served as master of ceremonies.



Henry W. Ringman

The people who attend the Saga Carnival in the gym with the king and queen will see the following booths available for their enjoyment:

SPURS, photos; Lettermen's shooting gallery; Clover Creek, baseballs at cowbells; Senior's splash; DPK, Hook a Leg; LSA, quilt gun; APO, football and basketball; Kappa Rho, Darto; Frosh, Baseball at records; Mooring Mast, darts at balloons; AWS, pie throw; Junior class, sponge throw; WAA, darts at faculty; Pi Kappa, golf; Soph class, baseball at bottles; Curtain Call, cake walk; DRG, side show; FTA, darto; Viking club, darts; Blue Key, ACS; ASL, penny pitch; Ivy Hall, shuffleboard; Camera club, movies.

On behalf of the student body of Pacific Lutheran College, the student council wishes to express its deep concern over the ill health of Mr. Mykland, part time professor of education and manager of the book store. The prayers of the students will be with his family at this time.

### Meet Ron and Jean

Here are PLC's choices for this year's Saga Queen and King—5'6½" blonde, blue eyed Jean Cogburn, freshman beauty hailing from Port Angeles, Washington; and 6'2" Ron Douglass, senior from Everett, Washington.

Jean is going to major in elementary education. She hopes to teach the first or second grade. She



Ron

Jean

graduated from Roosevelt High school in Port Angeles last spring. For recreation Jean tells us she likes swimming, reading and tennis. At PLC she has become active in AWS, LSA and Camera Club. She played on the frosh football team at Homecoming time and likes Don Danielson.

Ron, who is now student teaching likes math and physics. He served in the U. S. Navy electronics division, and worked one year with the Washington State Patrol. He is 25, engaged to a '52 grad of PLC, and likes to work with model radios and flower gardens. Right now he is worried about getting his dahlia bulbs in. He can't find the time to get home.

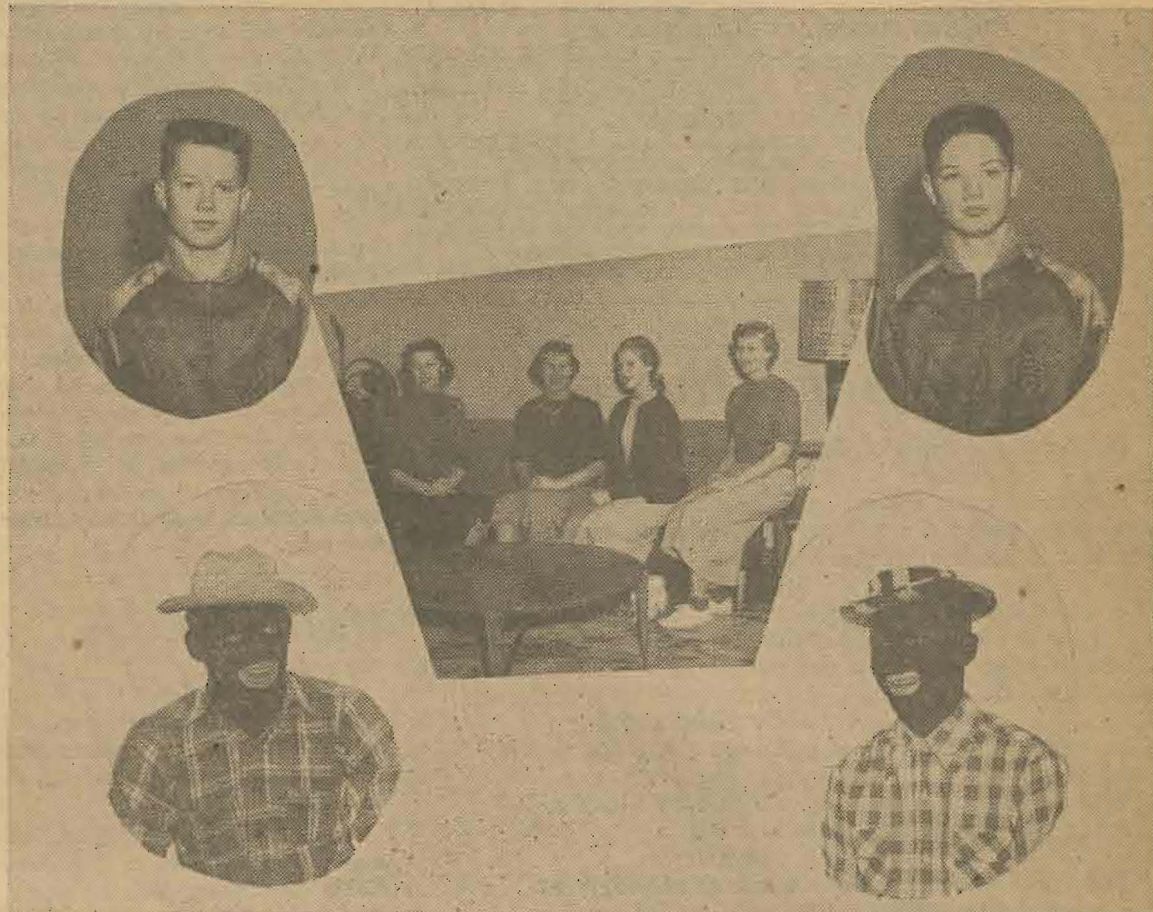
### 21 Visit Emanuel Over Week-end

Twenty-one girls from PLC will leave tomorrow for Portland where they will tour Emanuel hospital, meet future teachers, visit with PLC student nurses now in training at the hospital, and eat in the nursing home.

Accompanied by Freda Al Peterson, director of nursing education, the group consists of: Norma Borgford, Adonna Bondahl, Gayle Ellertson, Kay Engebretson, Joan Emtman, Laurella Frazier, Carol Hanson, Dorothy Hanson, Velma Harmon, Phyllis Jensen, Kathryn Jerstad, Marcla Knott, Marilyn Krug, Oretta Marion, Eleanor Martin, Carolyn Pritchard, Barbara Scheels, Mary Kay Simonsen, Helen Smeby, Sandra Standal, and Sigrid Tollefson.

One group of trainees at Emanuel has had a year at PLC and now is in its first year of training. The group will return to the college for a second year and then finish with a second year of training at Emanuel, their nursing requirements.

(Continued on Page 2)



SAGA CARNIVAL FEATURES ROYALTY, MINSTRELS, WRESTLERS. Bottom to top. In black face are, Garnet Lund and Jack Hoover. Queen Candidates Thelma Nygaard, Jean Cogburn, (Queen); Bobbie Birkedahl and Kathy Gulhaugen. Wrestlers are Leonard and Richard Lightburne.

### Style Show By Bon Tomorrow

To begin Saturday's Saga festivities, the Associated Women Students will sponsor a spring style show to be held at 2 o'clock in the upper SUB.

Professional models will show spring and summer fashions, in both casual and formal styles. All clothes will be from the Bon Marche of Tacoma.

A tea will be given preceding the actual modeling of the fashions, and a program will include Vern Lestrud singing and several students playing piano selections.

An admission of twenty-five cents will be charged.

Naomi Roe and Darlene De Jardine are co-chairmen for the event.

### Thomas Thomas and S. Chappel Star Here in May

Thomas L. Thomas, world renowned baritone, will open the second annual Drama-Music Festival at Pacific Lutheran College with his recital on Thursday evening, May 7.

Featured on Saturday's programs will be the Seattle Symphony Orchestra, under the baton of Dr. Stanley Chappel. In the evening, the PLC Festival Chorus will present the Brahms German Requiem with orchestral accompaniment.

May 7, 8, 9 and 10 have been set as the dates for the Festival, according to directors, Mr. Karl E. Weiss and Mr. Theodore Karl, and the tickets will go on sale the first week of April.

### Fox To Play Organ Dedication Concert

Playing the dedication concert for the PLC Casavant organ on April 15 will be world-acclaimed organist Virgil Fox. Officially, Fox is the regular organist at the Riverside Church, New York.

Ticket sales begin Monday, March 23, for \$1. Student and faculty reservations may be made in the college book store.

Because he must be at his post as organist of the Riverside Church every Sunday, Virgil Fox flies thousands of miles each year, playing over eighty concerts, which are crowded into the tightly planned concert season. Each Sunday Fox not only plays the morning services at the famous church, but also accompanies a complete oratorio presented by the Riverside Choir each Sunday afternoon.

Almost every Sunday night he flies off to another city, gets acquainted with another organ, plays it in concert, flies to another city, flies back to New York for Friday night rehearsal, and then resumes the same weekly schedule beginning with the Sunday Riverside services.

Further details of the program will be announced later.

Votes for the Rhythmettes should be sent today or tomorrow to KING-TV, Seattle. The winner of last night's talent program, on which Diane Bassett, LaVonne Dahl and Lucille Lentz appeared, will be chosen by the listening audience. On Tuesday, April 2, KING will announce the winner.

### Saga Carnival Schedule

FRIDAY NIGHT, MARCH 20

8:00 Coronation ceremonies, featuring Mayor Allan Pomeroy of Seattle and Norwegian Male Chorus from Puget Sound area.

9:00 Carnival, time to roam around and win prizes at the various booths.

10:15 Door prizes, provided by local merchants.

SATURDAY, MARCH 21

2:00 AWS fashion show, sponsored by Bon Marche of Tacoma.

8:00 Lettermen's minstrel show, TV wrestling demonstrations by Lightburne brothers.

9:00 Carnival.

10:15 Door prizes.

# The Mooring Mast

Published every Friday during the school year by students of Pacific Lutheran College

Entered as second class matter, October 2, 1952, at the Post Office at Parkland, Washington

Office: Student Union Telephone GRanite 8611  
Subscription price—\$1.50 per year

EDITOR-IN-CHIEF.....BEV GREEN  
ASSOCIATE EDITOR.....ROLLY OPSAHL  
NEWS EDITOR.....ELWOOD RIEKE  
BUSINESS MANAGER.....WALT SCHWINDT  
AD MANAGER.....JERRY SLATTUM  
AD SOLICITORS.....JIM JOHNSON, NAOMI GAFFNEY,  
BARBARA HOWARD

EXCHANGE STAFF.....DONNA SWANSON  
ELLEN HENRY, PHYLLIS BRANDT

SPORTS EDITORS.....BOB NIELSON,  
STAN KVERN, CHUCK FORSLAND

CIRCULATION.....THELMA NYGAARD  
MARLYS SALTERBECK

SPECIAL ASSIGNMENT REPORTERS.....ED KENNEDY,  
GLENN WERNER, MARLENE STUHMILLER,  
DAVE ROE, BILL UTZINGER, DICK BROWN, PAUL STEEN  
ASSOCIATE STAFF.....ROSEANNA HARTILL,  
LORETTA GRENTZ, MARIE INDERGAARD, NADINE ANDERSON  
BEA HANSEN, EULA DALLY, DAVE ENGLUND,  
DUANE DAHL, JOAN CHERNUT, JOYCE PUFFERT  
ADVISER.....U. N. HOFFMAN

Printed by La Crosse Printers, 118th Pacific Ave. 4

## Chapel Quotes

"If you're a disciple of Jesus, you are under sure protection. Rejoice!"

"If you are not a disciple, you can be. If you were and have fallen away, you can return. If you are now, renew your faith, witness, and accomplish great things."

Dr. Seth C. Eastvold

"A Christian view of history has no beginning, as it has no ending, for the beginning is with God, likewise the ending."

"Jesus Christ came into this world as a revelation of God, once and for all."

Dr. Schnackenbug

"In terms of cold dollars and cents, America profited from World War II."

"War ITSELF is a loss—it cannot have a profit."

"An injury cannot heal without a scar."

Alan Hatlen

"You and I are standing in the mirror of judgment."

"The good that we have done will live forever."

"Only that day dawns of which we are aware."

John Rydgren

### LIBRARY VOLUMES

- Corbett—The Young Mrs. Meigs —F C811Y.
- Frank—The Diary of a Young Girl—949.2 F85D.
- McCullers—The Ballad of the Sad Cafe—F M139B.
- Moss—The Iranian—F M851.
- O'Donovan—The Stories of Frank O'Connor—F Odls.
- Perlmans—A History of Trade Unionism in the United States —331.88 P42H.
- Steinbeck—East of Eden—F St3E.
- Thurber—The Thurber Album—818 T42T.
- Wecter—Sam Clemens of Hannibal—B C591D.

Every Thursday evening at 7:45 over station KTNT, Tacoma, Judd Doughty and Anita Hellbaum feature student talent on "Campus Show Case." Assisting Judd and Anita are Bob Wheatly, engineer; John Rydgren, announcer; and Nadine Anderson, script.

### Student Nurses

(Continued from Page One)

These girls are: Marjorie Bevan, Kathryn Eide, Marion Gabrielson, Karen Hille, Barbara Johansen, Anna Lee, Edith Olund, Helen Simonson, Constance Stay, and Gail Taylor.

The other group now at the hospital took two consecutive years at Parkland and are now in their second year of hospital work. They will return for one year of college before graduation. In this group are: "Charky" Brandt, Gloria Evanson, Ruth Hanson, Delora Johnson, and Louella Vig.

Evelyn Peterson and Marianne Sunset are both finishing their last years at PLC, having completed

To Go Shakes - Sundies

**McCAY'S ICE CREAMERY**

### BEITZ SERVICE STATION

Shell Lubrication  
GAS - TIRES - BATTERIES

Airport Road & Pacific Ave. GRanite 8539  
Tacoma, Washington

GET THOSE TERM PAPER NEEDS AT

**JOHNSON DRUG**

GRanite 7333

Parkland Centre

### Buelman, Pederson Represent PLC at College Band Meet

Attending the first Northwest Intercollegiate Band Meet this weekend at Bellingham's Western Washington College of Education will be Faith Buelman, flutist, and Roger Pederson, clarinetist. Accompanying these two representatives of the PLC band to the three-day meet will be bandmaster Harley Christopherson.

Ninety-five students from twenty colleges will be meeting to initiate this instrumental event. Walter Welke, host director, reports that the instrumentation would be exceptionally well-balanced because of the college talent which is available.

Guest conductor for the Intercollegiate Band Meet will be Gerald Keckly, who has received two Guggenheim Fellowships. A staff arranger and composer at Navy School of Music in Washington, D. C., during war service, he has taught at the University of Michigan and the University of Washington. His "Suite for Concert Band," written for orchestra has been published by Associated Music Company.

### Henrichs Leads "Curtain Callers"

Election of Curtain Call officers was completed at a meeting held last Thursday night, March 12, in the C.M.S.

New officers for the spring semester are as follows: President, Kathy Hendricks; Vice president, Joanne Moeller; Secretary, Nancy Turman; Treasurer, Jean Christianson; I.C.C. representative, Luana Huber; Parliamentarian, Bob Flemming and members-at-large, Mildred Van Buren and Bob Wheatley.

Plans are under way for Curtain Call to sponsor several one-act plays to be held on April 17 in the C.M.S. This production will be under the direction of Glen Johnson and Marion Christianson.

### Items From The Exchange Desk

Everett JC "Clipper" . . . The future Teachers of America and the American history classes at EJC toured the state capitol at Olympia guided by the state representative from their district. They met such dignitaries as Governor Langlie, and Attorney General Donald Eastvold.

St. Olaf "Manitou Messenger" . . . The St. Olaf Choir and the Minneapolis Symphony Orchestra collaborated on a twilight concert last Sunday evening. The annual event features several numbers by each group.

Luther College, "College Clips" . . . Forty-nine students from Luther College attended the recent Evangelical Lutheran Church College conference at Moorhead, Minnesota, which had as its theme, "Profile of Christian Youth."

Eastern Washington College of Ed. "Easterner" . . . (Headline) PLC Ruins Easterner's hopes for NAIA Title—Lutes Bop Savages, 61-54; Redmen Win in consolation.

Quarter exams on tap for March 18.

Midland College, Fremont, Nebraska "The Midland" . . .

Between 200-250 high school students will attend the high school senior conference at Midland March 20. The high school seniors will be luncheon guests of the school, will take aptitude tests and will meet for conferences with college students to discuss various departments of the school.

Central Washington College of Ed. "Campus Crier" . . . Thought for the week

"It's the little things that bother And put us on the rack; You can sit upon a mountain But not upon a tack."

**C. Fred Christensen STATIONER**

913 Pacific Ave. BR 4629  
Tacoma, Wash.

### Education; Youth Leaders Discuss Current Problems

Under the sponsorship of the Brotherhood of Trinity Lutheran Church, a Youth Problem's forum was held last Tuesday evening in the CMS featuring seven leaders in education and youth improvement programs from the state of Washington.

Opening the program with a twenty minute concert was the PLC band under the direction of Harley Christopherson. Following this, Roy Olson, moderator of the evening, began the regular meeting and introduced the seven speakers who each gave their views on the subject of problems concerning youth. Following, in part, is a resume of the views presented by each speaker.

Dr. Knorr, head of the sociology department at PLC, was the first to speak, and he stressed the religious slant showing that the guidance program for youth must be based on the word of God, for all rules and guidance come from above.

Miss Smoyer, Lincoln high school counselor, suggested a way in order to keep youth out of trouble was to have a good industrial arts program with a strong cooperation between school and community being necessary. Mr. Streeter, Stadium high school counselor stressed the athletic program and formation of clubs such as Hi-Y. He also stated that parents often force children to attend college when there is no capacity for college work resulting in an upset and troubled youth.

Stop In at **VERN'S**

for a

DELUXE HAMBURGER  
Old Fashioned Fish & Chips  
Home-baked Pies & Cakes

Full Fountain Service

**Ninth & Pacific**



LET US  
CARRY THE BALL  
ON YOUR HEATING OIL

Enjoy That "PLUS" Service  
Lubrication - Tires - Batteries  
Auto Parts

MARV TOMMERVIK'S

**Parkland Fuel Oil Service**

120th & Pacific Ave.

GRanite 8684

# Central Heads Inramural In Total Point Statistics

The point totals of the intramural leagues up to date show that Central Parkland is leading the field, having 100 points more than its nearest rival.

Central scored first in touch football, College League basketball and singles of table tennis, and third in University League Basketball and the Free-throw contest to give them their league.

The totals for each district shows Central with 844.9; Tacoma in second place with 688.2; Ivy Hall third with 565.3; Eastern fourth with 532.2; Clover Creek fifth with 477.7 and Western sixth with 135.1.

District	Points
<b>Central</b>	
Football	227.5
Basketball	459.0
Free-throw	53.4
Table Tennis	105.0
<b>Tacoma</b>	
Football	185.0
Basketball	250.0
Free-throw	75.2
Table Tennis	78.0
<b>Ivy Hall</b>	
Football	155.0
Basketball	383.0
Free-throw	23.3
Table Tennis	4.0
<b>Eastern</b>	
Football	120.0
Basketball	350.0
Free-throw	75.2
Table Tennis	7.0
<b>Clover Creek</b>	
Football	135.0
Basketball	300.0
Free-throw	39.7
Table Tennis	3.0
<b>Western</b>	
Football	62.5
Basketball	76.0
Free-throw	4.8
Table Tennis	2.0

## Baseball Bill Posted Play at Cheney Field

Pacific Lutheran College will play the full Evergreen conference limit of twenty baseball games this spring, Coach Marv Harshman announced Wednesday.

All the Lutes' home games will be played at Cheney Field, formerly known as "Tiger Park," which will also be the scene of all CPS home tilts.

The schedule consists of nine doubleheaders and two single contests.

- April 9—Seattle Pacific, there.
- April 13—St. Martin's, here.
- April 15—Puget Sound, here.
- April 18—Seattle U., there.
- April 23—West. Wash., here.
- April 29—Puget Sound, there.
- May 1—West. Wash., there.
- May 4—Seattle Pacific, here.
- May 6—Puget Sound, here.
- May 13—Puget Sound, there.
- May 16—Seattle U., here.

PLC plays single nine inning tilts against CPS on April 15 and May 6. All other matches are double affairs. Specific time of each game will be posted later.



COLLEGE LEAGUE CHAMPS—Central Parkland "Bibs" won the College League with a record of 13 wins and 5 losses. Pictured above are, l. to r.; Don Chesterfield, Bob Sorenson, Bob Nielsen, Bob McAdams, and Terry Sverdsten.

## Pirates Put On Year's Probation

Following an Evergreen Conference meeting of member colleges, the Whitworth College Pirates have been sentenced to a year's athletic probation. This decision was resulted from complaints by conference members on Whitworth's athletic policy.

According to reports the Pirates played three more basketball games than prescribed by conference rules. They had permission to play one of these games, but played two more without permission. This infraction and that of using an ineligible player were the charges of the other colleges.

The penalty implies that should Whitworth violate any conference rule within a year, stern action will be taken, possibly, it is reported, expulsion from the league.

## Two One-Acts To Show Soon

Casts for the two one-act plays, "East Am East," and "Wheat Fire," to be presented Friday, April 17, by Curtain Call have now been selected.

Under the direction of Glen Johnson, "East Am East," Loris Zellmen portrays Libby; Bob Johnson, Steven; La Wanna Huber, Delilah; Spencer Aust, Twig; and Bob Nielsen as Archabold.

Marian Christensen directs "Wheat Fire," with Bob Beatty playing the part of Martin Wade; Jean Christensen, Ursula Wade; Kathy Hinrichs, Anna Olsen; and Bob Wheatly, a man.

## Tacoma, East Park. In First Place Tie

Tacoma and Eastern Parkland tied for first place in the free-throw contest concluded last Friday. The five highest scores from each district were added and the two resulting totals were exactly the same—352. Following close behind the leaders was Central Parkland in third place with a total of 334. Next was Clover Creek Hall with 297 and in fifth place, Ivy Hall with 183.

Individual high scorer of the contest was Al Fink of the champion Eastern squad with 83. Gordon Christianson of Eastern and Roland Tobiason of Central were the next closest with 79 each, while Bud Lester, Bob Romnes and Art Swanson followed with 78, 77 and 75, respectively.

Comparing the results with those of last year, the winning total increased 4 points over the former winning score, 348, of Ivy Hall in 1952. Dave Kandal still leads in the individual scoring department by reason of his 85 points scored last season.

The breakdown of the scoring of the co-champs shows:

Eastern	Tacoma
Fink ..... 83	Romnes ..... 77
Christiansen ..... 74	Swanson ..... 75
Siek ..... 70	Karwaski ..... 71
Rogglestad ..... 65	Ahrens ..... 65
Swindland ..... 55	D. Larson ..... 64
Total ..... 352	Total ..... 352

The contest listed a total of 36 contestants.

PATRONIZE OUR ADVERTISERS

## Carnival Delays Volleyball Action

Because of the many activities taking place in the gym this past week the intramural volleyball league has been delayed in starting. However, team rosters have been submitted from most districts and play will begin next Tuesday, Mar. 24. The action will take place on Tuesday and Thursday evenings, the afternoons being taken up with spring sports. Be sure to check the bulletin boards for the schedule.

PATRONIZE OUR ADVERTISERS

### LAURINAT'S APPAREL

Apparel of Distinction  
Parkland Centre Bldg.

### C. O. Lynn Co. MORTUARY

717 ACOMA AVE. Phone MAIN 7745

### SWEATER CENTER

for GUYS and GALS!

EST. 1884  
**Washington  
HARDWARE CO.**  
918-24 PACIFIC • 923 COMMERCE  
**SPORTS SHOP**

## ELMO'S MEN'S WEAR

Featuring  
Day Slacks  
Van Heusen T-Shirts  
Jantzen T-Shirts  
Sweaters

134 PACIFIC BR 4448

### THOSE FAMOUS — "HAMBURGERS IN THE RUFF"

Fried Chicken & Sea Food  
**RICHARD'S SNACK BAR**  
at 82nd On Pacific  
Open Till 2:00 Fri. & Sat. Take-Out Orders

### GENERAL AUTOMOBILE REPAIRING GLADIATOR GARAGE

122nd & Pacific GRanite 9946

### PARKLAND XXX DRIVE-IN

Parkland Two Blocks North on Mt. Highway

## LITTLE MAN ON CAMPUS by Dick Bibler



"If you think we're busy now—you should come in sometime when it ain't final week."

## POCHEL DISTRIBUTING COMPANY

140TH & PACIFIC PHONE GR. 8624

### MOBIL

Stove and Diesel Oils  
AUTOMATIC FILL-UP SERVICE  
Westinghouse and Frigidaire Appliances

## Crusaders To Hear Quartette

A speech by Julie Bendikas and two musical selections by PLC's Ambassador Quartette will highlight the Mission Crusaders' meeting Tuesday, March 24, at 12:30 p.m. in the Tower Chapel.

Julie, who was born in Lithuania, will speak of her experiences in her native country.

The quartette which sang with the Choir on its tour, consisting of Ernie Johnson, Reid French, Herb Neve, and Pete Luvaas, will sing "Were You There When They Crucified My Lord?" and "Look Away to Heaven."

## Easter, Test Week To Halt Publication

With a two-fold purpose in mind, the staff of the Mooring Mast will not attempt to publish the Mast next week, March 23-27 because of mid-semester examinations and the following week because of Easter vacation which extends from Wednesday, April 1 to Tuesday April 7. With the financial situation which will result, the Mast will be able to bring to its readers an enlarged issue with numerous pictures to cover the Drama-Music Festival and graduation exercises.

### PATRONIZE OUR ADVERTISERS

**Art's Shoe Shop**  
Garfield Street  
QUALITY  
REPAIRING - DYEING

Headquarters for

Quality  
WATCHES  
DIAMONDS  
JEWELRY  
SILVER

Since 1889

**MIEROW'S**

1105 Broadway  
Tacoma

**DANIELS  
HARDWARE**

★ ★

ON THE HIGHWAY CORNER  
PACIFIC AVE. & GARFIELD

**THREE-DAY SERVICE**

On Laundry, Cleaning and Repairing  
24-Hour Service At Plant

*Fashion Cleaners*

Pick Up and Delivery

Garland 3372

3820 Yakima

## Choir Diary by Ben Green

With a warm send-off by the LSA, Professor Weiss and Dr. S. C. Eastvold, the Choir of the West left Sunday, March 1, for a singing tour which took our 59-voice aggregation as far east as Williston, North Dakota.

Before Terry Sverdsten's bus "37" and Ted Grotjohn's bus "38" pulled away from the C-M-S, a spike had to be pulled from one of the huge tires on "38." Roused from a comfortable Sunday morning snooze, Mary Tommervik, Mast advertiser, amiably helped fix the tire. After this false start, we of the choir again pressed our tear-stained faces to the windows of the buses and bade farewell to the tireless hand-wavers. Professor Weiss, who loves us, presented each songster with a box of chocolate covered mints. The only box of candy totally intact when we reached Spokane was the one belonging to Karen Kvern who put up a very stiff resistance to all of her sweet-toothed friends until Tuesday.

Enroute from Sidney to Big Timber, Montana, a 355-mile trip, bus "37" acquired a flat, and after much consideration of the matter, Terry decided we would have to stop and repair it. We found ourselves in the middle of sage brush, the air was frosty and the sun was making a valiant effort to rise and warm things up for us. The crews hopped into their grease monkey suits and began changing the tire. As it was only 7:30 in the morning, most of the kids welcomed a chance to get out and wake up in the morning air.

Bob Youlles found an old home-stand not far from the tire-changing scene and invited everyone over to have a look at the one-room "palace." Inside we found a pot on

the stove filled with some rather ancient dried green macaroni, and an old coffee pot hanging from the ceiling. The table was cluttered with moldy jelly glasses and caked plates. While some of us were off on this particular exploration, the rest of the kids had discovered a solidly frozen creek. They had started skating across this in a not too professional manner. Some of the poses were hilarious as our "on-the-spot" photographers will soon prove. Walt Ball proved to be the most powerful shoe skater and went through many contortions with the finesse of Sonja Henie.

Herb Neve was seen dashing across a pasture chasing a mean looking turkey, trying to get a feather for his hat. Cameras clicked when the turkey, at least a 40-pound bird, started chasing Herb.

At Bozeman, Montana, we were cordially received by the SPURS, who conducted us on a tour of Montana State College. Later in the afternoon the MSC choir and our own choir joined under the direction of Melvin Monson, former professor of education at PLC, to sing "Beautiful Savior." Every participant was thrilled and we all clapped for ourselves when we had finished.

Darlene Waldron, PLC '52, treated the choir personnel royally while in Bozeman. She gave us a pep talk right before our concert and told us how much this experience of singing with the choir will mean to us after we get out of school. We sang one of our best concerts that night.

In Big Timber, Sigrid Tolletson's old home town, the people asked her to sing a solo, which she did, beautifully.

All during the trip we were buying hats, trying to out-do everyone else with the impracticality of our chapeau. In Butte, with Choir Mom, Mrs. Knorr and Prof. Newham as judges, the two most original creations were spotted on the heads of Martin Simmons and Diane Bassett.

Mrs. Knorr's name did not appear on the advance housing list so she had to take what accommodations were offered with an enthusiastic smile.

One night she stayed with some

**Patty Ann Bakery**

9 a.m. to 9 p.m.

Opposite Nat'l Bank of Wash.

WEDDINGS - COR AGE  
FUNERALS

**STELLA'S FLOWERS**  
Artistry in Flowers

Parkland Center GR 7863

**PARKLAND GRILL**

DINNERS - SANDWICHES - SALADS  
HOMEMADE PIES - CAKES & COOKIES

Open Sunday 12 Noon till 8:00 p.m.

**LaCrosse Printers**

Cards  
Posters  
Announcements

Printers of Your  
**Mooring Mast**

11802 PACIFIC AVE.  
IN PARKLAND

Across from Triple X

**DILL HOWELL**  
Sporting Goods

929 Commerce St. Tacoma  
MA. 5665

**Top of the Ocean**

In Old Tacoma

## Blue Key to Serve Clams at Sun. Feed

Students will be able to feast on fresh sea-water clams this Sunday afternoon when Blue Key, national men's honorary, will sponsor a clam feed in the upper SUB from 4 to 5:30 with a charge of 35 cents for each dozen clams.

According to Gordon Wikner, chairman of the "Feed," it is being held to raise funds in order to send one and maybe two representatives to the national Blue Key convention to be held in Los Angeles Mar. 31 through April 2.

Besides the clams, coffee will be sold for 10 cents, clam nectar for 10 cents a cup, and bread and butter for 10 cents.

people who had requested two boys. To console the somewhat surprised hosts Pastor Olson said, "Oh, don't feel bad; she'll eat enough for two."

Along the way we received a second surprise package from the LSA, the first being Candy. Since it was expressly stated that Pastor Olson open the package, the rest of us waited eagerly for his appearance. Finally he came to the rescue. The opened package revealed a juicy stack of Bill Leed's old love letters and some old raggy laundry.

We didn't forget the kid's birthdays either, for instance when Ellen Kellberg turned 21, we presented her with a jump rope and when Ed Kennedy became a 20 year-old boy he received a black nylon hairnet. The Rhythmettes practiced "Crazy Rhythm" at least once each day during the tour.

Although these events were memorable ones on the trip, they were by no means the high-points. When we left the school Dr. Eastvold reminded us that we were "living epistles of Pacific Lutheran College." It was when we sang to receptive audiences or conversed with the many wonderful people we met that our greatest pleasure came. The friendships we gained during the trip among ourselves and with the people we met along the way is the part of the tour we shall cherish longest.

**Centre Cleaners**  
Laundry Service

Parkland Centre Bldg.

**NEAL E. THORSEN**

TRICKS - JOKES - MAGIC  
Costumes - Tuxedos - Serpentine  
926 1/2 Broadway MA 4861

**GROCERIES & MEATS**

**RUSLER'S MARKET**

231 Garfield Street

GRanite 8560

**Madden's Mens & Little Mans Shop**

Parkland Centre Bldg.

GRanite 4242

**TUNE IN YOUR OWN  
CAMPUS RADIO THEATRE  
6:30 EVERY WEDNESDAY NIGHT**

(DURING SCHOOL YEAR)

★ College of Puget Sound  
★ Pacific Lutheran College  
★ Stadium High  
★ Lincoln High  
★ Sumner High  
★ Puyallup High

★ Visitation Villa  
★ Federal Way High  
★ Clover Park High  
★ St. Leo's High  
★ St. Martin's College

**KMO**  
1460 on Your Dial

**KTAC**  
6:30 P.M. - THURSDAY

Sponsored By

**TACOMA CITY LIGHT**