

New Building Opens For Chapel Jan. 29

Students and faculty will officially move into the auditorium of the Chapel-Music-Speech building for the first time Tuesday morning, Jan. 29. At 8:30 a.m., the first period will end and Chapel devotions will be held from 9 to 10:30 a.m.

An academic procession from the Student Union to the Chapel will precede the program. Faculty mem-

bers, attired in academic robes, will march in the SUB basement. Students will assemble upstairs. Dr. O. M. Jordahl will be marshal in charge of the faculty, and Arthur Broback, student body president, will appoint two student marshalls.

The college band will be arranged in the orchestra pit and the Choir of the West in the first two rows before the procession.

The program, announced by the Chapel committee, is as follows:

Leading off will be the band, playing the procession, followed by the Scripture reading and prayer by Rev. Roy Olson.

After two selections by the Choir, Professor R. Byard Fritts will offer a piano solo. Then Prof. Karl Weiss will direct the audience in singing three hymns.

Dr. H. L. Foss, president of the Pacific district of the Evangelical Lutheran Church, will then deliver the address.

The last two numbers on the schedule will be a vocal solo by Prof. Newnam and two numbers by the Letterman's Glee Club.

Professor A. W. Ramstad will pronounce the benediction and the band will play the recessional.

Curtain Call Club Elects New Officers

Newly-elected officers of Curtain Call Club are: John Rydgren, president; Glenn Johnson, vice-president; Marian Christensen, secretary; John Osburn, parliamentarian; Jim Traynor, treasurer; Phil Wigen and Marilyn Wallace, executive board.

Installation of officers will take place at a party February 14 in the Student Union building.

Members voted to give "Christmas Carol" proceeds to the Parkland children's home, and to the Tacoma Lutheran Welfare Agency.

Money for AWS scholarships, was discussed.

Miss Wickstrom is the adviser for the group.

Ericson Wins First or Second Time

Never before in the history of the sport Tourney has one man won first place two consecutive years. Ericson, senior debater, did just that at the recent tourney held last Friday and Tuesday in Portland.

Not content with merely this honor, Ericson combined to continue being exceptional, garnering the sweepstakes trophy for the second straight time. Alan Hatlen and Bill Riecke finished second and seventh, respectively. At the first time in the annals of the Vanport event a moderator was employed. John Osburn, acting in this capacity, received a second place award.

AWS Gives Fresh Program

The A.W.S. provided a program especially for freshmen women last week. Representing Spurs, Joyce Christensen, president of the national sophomore women's honorary, described the purpose of the organization, and indicated the girls what determined eligibility for Spurs.

Following with a discussion of "Tasmania" scholastic-honorary for senior Mildred Foege explained what arrangements were necessary for membership.

Starting at 7:00 in the SUB, the program planned for a "Leap Year Tolo," which will possibly include a contest for the "ugliest man." The annual fashion show, which is given, to raise

Olaf Choir to Present First Concert in New Building

In honor of giving the first performance in the new Chapel-Music-Speech building will go to the famed Olaf Choir. They will appear here Friday, January 26, at 8:15 p.m.

All students and faculty will not be able to enter the edifice until Tuesday, January 29, the first day of the new year.

Tickets for the concert, which is sponsored by the PLC Dormitory Auxiliary, may be secured in the Student Union or downtown Tacoma. In addition, Young's Gift Shop is handling ticket sales, and downtown it's either at the University or Ted Brown Music Company.

A special matinee concert will be given Saturday afternoon at 3 p.m.

PLC Grad To Cover Winter Olympic Games For Mooring Mast

The Mooring Mast will employ a foreign correspondent in future issues to cover the Winter Olympic Games, which will be held in Oslo, Norway, in the latter part of February.

Dick Svare, PLC grad of '51, who is now attending the University of Oslo, will bring a first-hand report of the festivities, preparation for, and actual competition of the 1952 Winter Olympics.

Museum Asks PLC For Rare Bird

Letters addressed to the Pacific Lutheran Biology department from various museums throughout the country are very common and plentiful. However, last week, as Dr. Burton Ostenson, biology professor, thumbed through the usual correspondence, he came upon a letter from the United States Museum of Natural History.

The letter requested the loan of an albatross, part of a bird collection which was loaned to PLC, for examination and study. Mr. J. W. Slipp, ex-biology instructor here, and one of the top ornithologists in the Northwest, owns the collection.

When the bird was shot September 1, 1951, the story was run in newspapers from coast to coast. The reason for all the interest in the bird is that its natural habitat is in the Bass Straits, between Australia and New Zealand, but it was shot 40 miles due west of the Quillayute river, near the Pacific ocean.

This represents a new species in the Northwest, and thus the inquiry by the museum.

An adult female, the albatross is of the *Diomedea cauta cauta* species.

Confirmation Class Slated For Feb. 12

Eight students have signed up for Rev. Kelmer Roe's spring semester Confirmation instruction class.

First session of the class will be held February 12 at 7:45 p.m. in Roe's home. A total of eleven sessions will be held, culminating with the students' confirmation April 27 at Trinity Lutheran Church.

Any person interested in taking instruction should contact Rev. Roe at PLC or at his home.

Mrs. Steen Explains Steps in Book Printing

The steps a book goes through—from a brain-child to a first bound edition—were explained by Mrs. E. Steen, college pastor's wife, at a recent LDR meeting.

Mrs. Steen, at the request of a publishing company, wrote two children's religious books.

One of them, a church history, was printed in four colors. Mrs. Steen said each page went under the presses four times, with a color added each time, until the page was printed in green, brown, red and yellow. This is the same method used in printing newspapers.

Unlike many authors, Mrs. Steen worked directly with the publishing company, and even wrote the major portion of one book in their office.

Council Suggests Seating Change

By Art Broback

"Because of serious opposition among the student body, the Associated Student Body Council recommends to the Chapel committee that a revised plan for seating arrangement be adopted, whereby alphabetical seating shall not be compulsory." This recommendation was approved at the Council meeting last night, and will be presented to the Chapel committee today.

The present system of alphabetical seating, the committee felt, would be the simplest way to assign seats. Also, it would be easier for the office to check absences. Following is the plan as it now stands.

The first row shall be left vacant. In the second and third rows in front will be seated the faculty, alphabetically.

On the right side, the freshman class, and then the seniors, looking toward the stage. Each class to be seated alphabetically.

The sophomores and juniors on the left side.

Special students will sit back of the seniors.

Back of the juniors will be the staff and workers.

All guests at the college will sit in a section marked by a visitors' sign.

The council voted unanimously in favor of changing the seating system. Any plans for a different method will be left up to the Chapel committee.

Ramstad Elected Prexy of Northwest Scientific Group

New chairman of the Northwest Scientific Association is Professor A. W. Ramstad, of the PLC Chemistry department. He was elected at the annual meeting of the group, held in Spokane during Christmas vacation.

Ramstad has been a member of the faculty for 23 years.

Weekend Closed; Semester Begins Jan. 29

All club meetings for next week have been cancelled because of test week. Also this weekend is closed for dormitory girls.

Classes in the spring semester will commence Tuesday, January 29, at 7:55 a.m.

New Secretary Takes Over Duties In Prexy's Office

"My life hasn't been unusual, but it has been interesting to me," said Miss Odella Hugelan, the newest addition to the PLC secretarial staff. Miss Hugelan, Dr. Eastvold's poised, petite secretary, feels that life has treated her well, but can't understand why anyone else would be interested in such a common existence.

Miss Hugelan, the youngest in a Norwegian family of seven, was born in Montevideo, Minnesota.

"Of course, being the youngest, I felt persecuted because I was teased a lot, but I knew that I was loved by the rest. My three brothers teased me the most, but," she added quickly, "they also babied me the most."

When asked if there was a story behind her unusual first name (Odella, a Teutonic name meaning "of the prosperous land"), Miss Hugelan thought for a moment and then replied:

"No. None that I know of—except the family wanted to name me after my father and that was the closest they could get."

Saga Picture Contest Begins

Student Life pictures are in demand now for the special campus section of the Saga. Starting now, the contest for the best photos submitted by students ends March 1.

The Saga directors request "good pictures of campus life, not posed shots." According to the directors, shoot your friends and get paid for it. Four prizes, \$5 for first place, \$2 for second and third, and \$1 for fourth award, will be offered.

For additional instructions or details contact Paul Wangsmo, Joanne Nodtvedt or Joanne Schwarzwalter.

LBI President Praises C-M-S

"PLC should be justly proud of having such a fine building as your new chapel in the heart of its campus. It is the first one of its kind on a Lutheran college campus." Those were the words of Dr. Oscar L. Hanson, who spoke in chapel last Tuesday.

Dr. Hanson is president of the Lutheran Bible Institute. LBI has branch schools in New York, Los Angeles and Seattle. Its main school is in Minneapolis. It was originally planned that he give the opening address in the new Chapel-Music-Speech building.

He is on a tour of Western states, speaking on "Living Messages from the Living Word."

Her father's name, a typically Norwegian one, was Ole.

For a hobby Miss Hugelan collects and also writes poetry. She is fond of music, although not a musician.

"I write poetry for my amusement and at the amusement of others—when I let them read it," she said laughingly.

This job is Miss Hugelan's fourth one. After attending the University of Minnesota for two years, where she took a secretarial course, she worked, first, as a secretary and book-keeper, at the Norwegian Lutheran children's home in Chicago. Her second position was that of an accountant at Waldorf College in Forest City, Iowa. Just before coming to PLC Miss Hugelan was an accountant at the Luther Hospital in Watertown, South Dakota.

Miss Hugelan plans to be at PLC permanently. When asked if she liked it here she replied enthusiastically, "very much so!"

The Mooring Mast

Published every Friday during the school year by students of Pacific Lutheran College.

Entered as second class matter, October 2, 1925, at the Post Office at Parkland, Washington

Office: Student Union Telephone: GRanite 8611
Subscription price—\$1.50 per year

EDITOR.....DAVE NESVIG
ASSOCIATE EDITOR.....JOANNE SCHIEF
BUSINESS MANAGER.....ERVING SEVERTSON
EXCHANGE EDITOR.....ERNEST JOHNSON
SPORTS EDITORS.....RON DOUGLASS and TED GROTHJOHN
PROOF EDITOR.....JANET FRANKLIN
AD MANAGER.....PHYLLIS GRAHN
CIRCULATION MANAGER.....MARILYN SANNERUD
ADVISER.....URAL HOFFMAN

REPORTERS—Joanne Poentet, Phyllis Grahn, Joyce Genz, Gloria Kvinge, Delores Hagevik, Ernest Johnson, Jerry Martin, John Martin, John Hohm.

Printed on the Campus by La Crosse Printing Company

Australian Debaters Greatly Impressed By PLC "Family Spirit" and Campus

Expressing a desire to attend PLC, if at all possible, Robin Rhodes Millhouse and John Boyd Reid, the two Australian debaters, left Tacoma Sunday for Portland.

Driving to Portland with our forensics squad, the men from down under stated that, "It was not only the high academic standing, or the facilities available for further study in speech, but most of all, the prevailing and active code of ideals," that attracted them most.

Commenting further on the PLC atmosphere, Reid expressed surprise over the diversified audience last Saturday evening, stating, "The audience was mixed with so many different intellectual ideals it was astounding."

"This just proves further that the faculty and students are one big family with a united aim," replied Millhouse.

On the trip, Millhouse told of his conception of the Pacific Northwest.

"I thought of the Northwest as an area of undeveloped land, vast forests, poor roads, if any; what a surprise I had when I saw the size of the towns and the magnificent roads."

Robin Millhouse is a native born Australian, as is his companion, John Reid. Both men have been very active in speech work. Millhouse, who is doing work in the field of law, is a graduate of St. Mark's college. Reid is studying law at Melbourne University.

These two men had never worked together until the American tour. They were finalists in the Intra-University debate tourney. Six universities participate in this event and the competition is unparalleled.

"By far the finest team we have been pitted against thus far," was the comment both men had in regards to the fine team of Ericson and Rieke.

Prexy Says . . .

This week I would like to give you a brief resume of what happened at our last council meeting.

One of the most significant items of business was the discussion of the Spiritual Emphasis week program. An advertising and host committee was chosen and other plans for the week were also discussed. Spiritual Emphasis is the week of Feb. 4-8.

Another item of business was the campus Chest drive. This drive has been turned over to the Blue Key, men's honorary. They will organize and spearhead the drive which will get underway about the second week in February.

Other items of business which were discussed included: chapel seating, exchange assemblies, chapel programs, and political organizations on the campus.

Philharmonic Concert Tickets Are Available

Tickets for the Tacoma Philharmonic's presentation of two world-famous conductors, Arthur Fiedler and Sir Thomas Beecham may be obtained from Gudrun Ness Ronning. For information call GRanite 7104.

Both conductors will appear at the Temple theatre in Tacoma. Arthur Fiedler of Boston "Pops" Orchestra fame, will present a concert on Jan. 29, and Sir Thomas Beecham, conductor of Britain's Royal Philharmonic Orchestra, will perform on March 10.

Student section tickets are \$3.00.

Mission Society Hears Bible Institute President

PLC students who attended Mission Society Wednesday night in the SUB were given an introduction to the curriculum and activities of Lutheran Bible Institute in Seattle.

Pastor E. V. Stine, president of the Seattle school, gave a sample Bible study as conducted at LBI, and students put on the rest of the program. It included films about LBI, musical numbers, devotions, and a talk about the work of departments of LBI.

PLC will give a return program in Seattle February 22.

Patronize Your Advertisers

Manufacturing and Repairing
JEWELRY

Tacoma Agate Shop
770 So. 38th GA. 9232

C. O. Lynn Co.
MORTUARY

717 TACOMA AVE. Phone MAIN 7745

ORDERS TO TAKE OUT — CHINESE AND AMERICAN DISHES
GOLDEN CITY CAFE

Open 11 a.m. to 2 a.m. daily — Sunday, 12 noon to Midnite
3812 South Yakima, Tacoma Phone HI. 9131



TO YOU . . .

A FREE Silver Dollar with every shoe purchase

January 17-26 at

Soine's Parkland Shoe Store

411 Garfield St. GR. 3526
Parkland Centre Bldg. Open 10-6

1951 Grad Tells Perils of Teaching

The perils of first year teaching were very vividly described recently by Gene Shaw, a 1951 graduate of PLC Orchard Heights school in Port Orchard, Wash., Gene's home town, is the scene of his new career.

Gene suggested some difficulties that education majors will no doubt meet when they land a teaching position. They are: Making the right impression the first day of school; trying to "act" like an accomplished disciplinarian; endeavoring to effect a calm and complacent appearance in the face of all trials.

"The question of discipline always seems to be rearing its ugly head," Gene declared. He believes that theory courses in college are valuable, but represent "ideal" situations. He has found every child different and in need of special treatment. With such a variety of personalities, he doubts that there could be an ideal classroom situation.

"Some kids you can reason with, some you have to shame, others can be put in their place with a stern glare, or a warning, still others will require firmer measures—the paddle; (I've given 6 swats already)," he admitted.

Feeling unprepared in a few of the subjects he is teaching, Gene is anxious to take some courses to strengthen these weak joints; and is grateful for the "fifth year" program.

He left college prepared to teach social studies and health. Gene teaches seventh grade arithmetic, social studies, spelling, English, reading, health, and science, besides fifth grade health and science.

Now that Gene is on the other side of his diploma, he wishes that student teaching had been an all-day process. "The most essential thing is the actual teaching experience under the guidance of a competent instructor."

DRG Elects Officers, Makes Activity Plans

The "Valentolo" leads the list of events planned by the Delta Rho Gamma, Day Girls, for the coming semester.

On February 2, at 7:30, the DRG will entertain the men of their choice at a smorgasbord feast, followed by a program of talent.

On the spring schedule are a moonlight cruise in April, and in the early part of May the annual House party.

Under the leadership of Delores Johnson, president, are: Phyllis Maltzahn, vice-president; Rosemary Needham, secretary, and Mary Olson, treasurer.

Also included in the DRG cabinet are representatives of each class: For the freshmen, Beatta Lambert; sophomores, Barbara Ahlberg; juniors, Bettie Kenny, and seniors, Shirley Ann Sandin. Betty Hall is the I.C.C. representative.

Advising the Day Girls in their various activities is Miss Berge.

QUESTION of the WEEK

The question of the week is: "What do you look forward to most in the coming semester?"

Herb Siefkes: Hitting the books this semester, only twice as hard (getting an "A" from Doug).

Jim Kauth: As usual, better grades.

Marty Hellberg: Most of all I am looking forward with great anticipation to singing in the Lettermen Glee Club "Spring Show."

Carol Schulz: I am looking forward in my lab book to bigger and better chemistry experiments (with great anticipation, though).

J. P. Carlstrom: Quiet living at Stuen's.

Barbara Espedal: I'm looking forward to the time when the rowdy girls on my floor will quiet down and let me get my nightly beauty sleep.

Bill Rees: I'd truly like to say that I am looking forward to another grand semester at PLC, but unfortunately I am leaving for Germany before the new term begins.

Betty Brown: Getting the mob of registering students out of my office so I can relax again.

Carol Brace: I'm looking forward to the day that some professor can sing a certain set of red curls with the Torch of Knowledge.

Jocann Huchttoen: The opening of the new building, which will provide for new types of social activity during the new year.

Ron Reule: Hah, let's finish the semester first!

Roy Virak: I'm longing for about 3:00 p.m., May 25th. That's graduation day.

Campus Theater On Tomorrow

Frederick L. Newnham, baritone soloist, was the feature guest on Campus Radio Theatre Wednesday evening.

On stage also was the PLC string ensemble, under direction of Professor Harley I. Christopherson.

Among the selections Mr. Newnham presented was, "Down by the Old Gardens," arranged by Margaret Kennedy Fraser. The string ensemble offered "Lover Come Back to Me," Romberg, and "Serenade," by Mozart.

Produced and directed by Professor Vernon A. Utzinger, the program script was written by Harriet Olson and Alan Hatlen. The student announcer was Judd Doughty.

For the benefit of those who missed the program, a rebroadcast is scheduled for Saturday morning at 9:30 KMO.

LET US CARRY THE BALL ON YOUR HEATING OIL . . .

We'll gladly be responsible for keeping you supplied with Clean-burning, Non-waste STANDARD FURNACE OIL or STANDARD STOVE OIL.

★ Prompt Service ★ Metered Delivery ★ Automatic Re-fills

ENJOY THAT "PLUS" SERVICE

STANDARD HEATING OILS — AUTO PARTS

PARKLAND FUEL OIL SERVICE

120th & Pacific Avenue

Phone GRanite 8684

SWEATER CENTER

For GUYS and GALS!



TED and RON with the Sports Once Over

Good things must come to an end, so we do not have a Lute streak to brag about as of Friday night. One fact seems to be blinding itself. The Lutes are a half-ball club. They trailed at half-time and won the ball in the second half. Whitworth 10-point first half lead until the second half gave PLC a victory. Also last Friday at 11:00 the Lutes led the scoring in the second half but that 25 point deficit was simply too much. We have given due consideration to the first half nemesis which seems to be the Lutes and have finally found a solution. With all due respect we have suggested to Coach that in his remaining games PLC stall out the first half when the Lutes get around the basket in the third quarter will not have such a large overcome.

Coming back to the bright side of the basketball picture, we see that we must face that tough Eastern-north combination this weekend. It didn't be too surprising if one of the teams would knock over the other and, coupled with a possible sweep by the Lutes on their return trip, we could find PLC at the top of the Evergreen conference.

"Goober"

Week we talked about Harry Gehlin, former Lute basketball ace,

who is gaining nation-wide publicity as the star of the House of David team. This week we would like to talk about another highly publicized Lute great. A recent issue of the national Air Force Times carried a picture and story of Gene Lundgaard, who climaxed a 4-year PLC basketball career by leading the Lutes to the state NAIB championship in 1951. Gene, who came to PLC after making all-state at Anacortes high, holds two all-time school records in Luteville. He dropped in 38 points in a single game against CPS and also holds the season scoring record with 546 points in 1951. Gene also averaged 18 points per conference game to break the old record.

According to the Air Force paper, Lundgaard hasn't lost his shooting eye. Gene enlisted in July, 1951, and is now starring with the strong Memphis Air Force team which is playing a 75-game schedule in Kentucky, Alabama, Georgia, Mississippi, Florida and Tennessee. He has hit over 30 points in three of his last five games and dumped in 38 one night. Gene, who usually sits out the last quarter because his club has such a lead, has an average of 22 points per game.

Gene's wife, the former Marian Benjaminson, PLC '51, is living in Parkland and teaching primary grades in Clover Creek school. Al Cartwright, Lute footballer of 1950, is stationed with Gene at Memphis.

Gladiators Named To Conference Squad

Though the Evergreen Conference team was selected December 15 is now history, the sports staff elected to print the information. With apologies to the Lutes who honored, we present the 1951 conference squad as chosen by the Magnuson, named to a tackle position, was the only member of the champion Gladiators to make the team. Jim Ball, end; Ray Barnes, and Bill Stringfellow, fullback,

were given second team berths.

First team: Ends—Sam Adams, Whitworth, and Joe Retailick, CPS; tackles—Earl Combs, CPS and Ole Magnuson, Pacific Lutheran college; guards—Ken Davis, Eastern, and Newt Kier, Central; center—Dick Boyle, CPS; backs—Howard Glazier, Eastern; Norm Hash, Western; Don Murdoch, CPS, and Ed Kreitz, Whitworth.

Second team: Ends—Jim Ball, PLC, and Roy Richardson, Western; tackles

Free-Throw Contest Begins Next Week

Intramural basketball free-throwing contest starts today. Each participant will shoot 100 free-throws. Individual points will be awarded according to free-throws made, also extra points for placing in the top five. The five highest scores from each district will decide the district winners. Closing of the contest will be on February 23. Arrange with the intramural director, Mark Salzman, when you are ready.

Intramuralers End 1st Round

Intramural basketball has finished the first half of its schedule and the standing resulting from Tuesday night's games are as follows. These standings are not complete, as the final games for the first half were not played until Thursday evening, which made the scores unavailable for this issue.

University League		
	Won	Lost
Eastern Parkland	4	0
Central Parkland	3	1
Tacoma	3	1
Ivy Hall	2	2
Clover Creek Hall	2	3
Western Parkland	1	4
Suburban	0	4

College League		
	Won	Lost
Central Parkland (c)	4	0
Eastern Parkland (b)	4	0
Ivy Hall (b)	4	2
Central Parkland (b)	2	3
Ivy Hall (c)	1	5
Clover Creek (b)	0	5

Both leagues thus far have had close competition and judging from the past, it will be a race right down to the finish to see who comes out champions.

In the college league it seems to be a two team race between Central's C team and Eastern's B, but Ivy's B could still pull into the lead with one or two upsets.

--Ned Conley, CPS, and Al Cornett, Western; guards—Ray Barnes, PLC, and Bob Demko, CPS; center—Bob Hibberd, Central; backs—Art Viafore, CPS; Bill Stringfellow, PLC; Ollie Wright, Whitworth; Bob Propst, Central.

Lutes Risk Title Chances On Northern Journey

The PLC Gladiators will attempt to get a new victory string going and stay in the running for Conference honors in a two-game trip this weekend into the northland. Tonight the Lutes meet Western at Bellingham and tomorrow night travel across the border to play U. of British Columbia in Vancouver.

One of the three Lute losses suffered in 13 games this season was at the hands of Bill McDonald's Western five. The Vikings defeated PLC 46-45 in overtime in the Totem tournament in Vancouver early in December.

The Lutes have shown great improvement since then, while Western will also be strengthened by the return to the lineup of high-scoring Bob Hansen, who sat out that first game. Hansen, 6-6 center, averaged 14 points per game in conference play last year and has already done plenty of scoring this season. Others who will see plenty of action for the Vikings are Dick Brock, 6-3 transfer from St. Martin's, Bob Woodman, 6-5 2-year letterman, and lettermen Jack Anderson and Bud Scott. Seymour Sturmans, 6-2 guard transfer from WSC, has also been breaking into the starting lineup of the Bellingham school. In conference play, Western holds an easy victory over CPS and were dumped, 52-47, by Central. Tonight's ball game shapes up as a very close contest.

Central Snaps Glad Win Streak at Nine

Our "red-hot" basketball team was "ice-cold" for 20 minutes. That is the story from Ellensburg last Friday night as the Central Wildcats stopped the PLC winning streak at 9 games by turning in a 66-46 victory.

Both teams took 33 shots in that first half and at intermission the score was Central 33, PLC 8. The Wildcats threw up a zone defense which was quite effective on their small floor, but the Lutes were getting the shots and simply couldn't seem to put the ball in the hoop off those fan-shaped backboards. The Lute shooting percentage in the first half was a terrific 16 percent.

The UBC Thunderbirds are an inexperienced, but scrappy, ball club which hasn't won too many games this year, but have given all their opponents good games.

Coach Jack Ponfret has built his team this year around returning lettermen Don Hudson, Art Phillips, 6-3 center, and John Southcott. UBC doesn't have any more height than the Lutes and they have done a lot of scoring in recent games without too much show of defense.

The second half was a pretty fair ball game as the Lutes outscored Central, 38-33, but couldn't get within range.

HAMBURGERS SHAKES SODAS

Durdle's Ice Creamery

721 South 38th

The Clay House

Classes Start: Thursday Nite, 8:00 to 10:30
Week days, 2:00 to 6:00

Parkland Center

Kilns - Clay - Glazes

Afternoon and Evening Classes

Jean Elston Ceramics

3811 So. Park HA. 1486

SEARS

TACOMA WASH.

McCay's Ice Creamery

Try Our Milkshakes

He had no wish but—
to be glad
Nor want but—
when he thirsted

The Jolly Beggar



Each frosty bottle of Coke is the answer to thirst... each frosty bottle is a bargain, too. Robert Burns would like that!



BOTTLED UNDER AUTHORITY OF THE COCA-COLA COMPANY BY COCA-COLA BOTTLING, INC., TACOMA, WASH.

© 1952, THE COCA-COLA COMPANY

THREE-DAY SERVICE

On Laundry, Cleaning and Repairing

24-HOUR SERVICE AT PLANT

Fashion Cleaners

PICK UP and DELIVERY

GA. 3372 3820 Yakima

TUNE IN YOUR OWN CAMPUS RADIO THEATRE

6:30 EVERY WEDNESDAY NIGHT

(DURING SCHOOL YEAR)

★ College of Puget Sound
★ Pacific Lutheran College
★ Stadium High
★ Lincoln High
★ Sumner High
★ Puyallup High

★ Visitation Villa
★ Federal Way High
★ Clover Park High
★ St. Leo's High
★ St. Martin's College

KMO
1360 on Your Dial

Sponsored By

TACOMA CITY LIGHT

Rebroadcast K7BI
9:30 A.M. Saturday

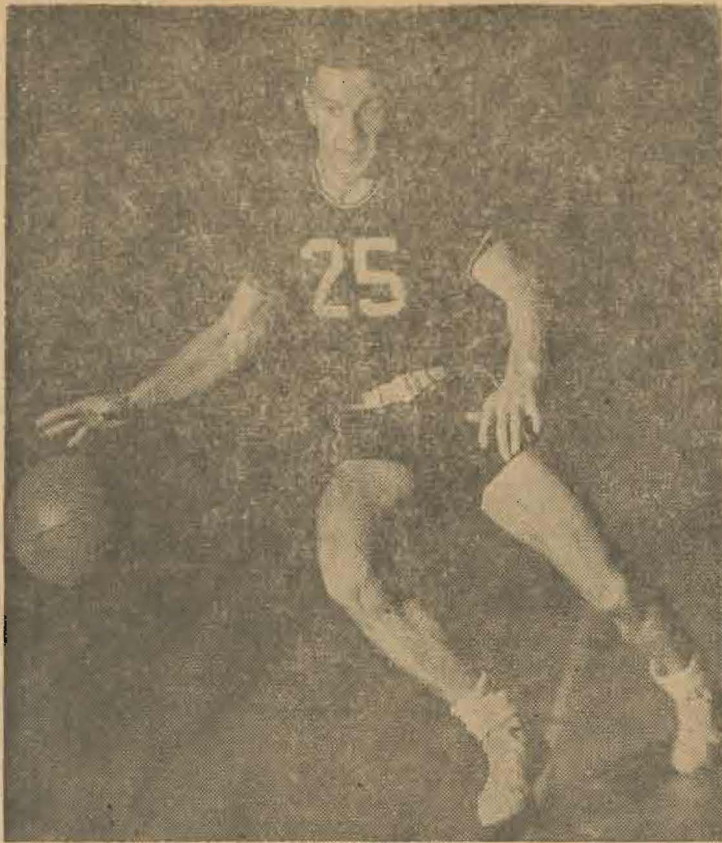
Camera Club Takes Over Campus Studio

The Camera Club has taken over the Campus Studio in the SUB. All equipment but that which will be of use to the group has been removed.

The studio will be available for club members' use at a fee of \$2 per semester, payable to the school.

Throughout the past semester, lectures and demonstrations on developing and contact printing were given.

At one meeting Miss Anne Knudson, assistant professor of English, showed her slides of Northern Europe, and of a Camera Club outing at Gabler's Knob, Mount Rainier.



ED BROWN, pictured above, currently is leading all Gladiator point-getters, with 101, including the Central game. He is playing his second season in a black and gold uniform after transferring to PLC from Olympic Junior College last year.

Parkland Pharmacy Rexall Drugs

Pacific Ave. & Airport Road
New Bank Corner

VALENTINES FOR EVERYONE

Young's Gift Shop

Delicious Hamburgers

at the

HANDOUT

129th & Pacific Mt. Highway

For the Best Entertainment

Go To The

LINCOLN BOWLING ALLEY

3828 South Yakima



at

Saine's Parkland Shoe Store

A FREE Silver Dollar

With Every Pair of
BOOTS - SHOES - SLIPPERS

JANUARY 17-25

411 Garfield St. GR. 3526

Shirlyanne Sandin Presents Concert

Soloist for the Ladies' Musical club on January 8 was Shirlyanne Sandin, voice student of Gunnar Ness Rønning. The musical was held in Weyerhaeuser Hall, Y.W.C.A., in Tacoma.

Miss Sandin is a senior student and has been active in the music department. She has appeared in both sophomore and junior recitals and is the alto soloist with the Choir of the

West. At the present time she is working toward her senior program.

With Jeanette Foss, student of Byard Fritts, at the piano, Miss Sandin sang "Lasciatemi Mirire," by Monteverde; "Vergebliches Standchen," by Brahms; "O Mio Babino Caro," by Puccini; "O Thou That Tellest Good Tidings to Zion," from Handel's Messiah; "Silent Strings," by Bantock;

BREAKFAST — LUNCH — FOUNTAIN

HOURS: 7:30 A.M. TO 6:00 P.M.

NORM'S COFFEE BAR

756 St. Helen's

PATTY ANN BAKERY

GR. 3330

Hours: 9 to 9

Opposite the Bank

Airport and Pacific Ave.

PARKLAND RADIO-T.V. CLINIC

See JIMMY ROGERS for Sales and Service
508 Garfield St. Parkland, Wash.

One-half Block East of Pacific Lutheran College
Pick-up and Delivery

ONE HOUR

FREE and EASY PARKING
Complete Banking Services
New Lincoln Branch



Puget Sound National Bank

MEMBER FEDERAL DEPOSIT INSURANCE CORPORATION - FEDERAL RESERVE SYSTEM

PARKLAND XXX DRIVE-IN

MERCHANTS LUNCH—55c

Full Course Dinner—11 to 9

HOURS: 7:00 a.m. to 12:30 a.m. Week Days
Friday: 7:00 a.m. to 2:00 a.m.
Saturday: 7:00 a.m. to 3:30 a.m.

Breakfasts

Parkland

Two Blocks North on Mt. Highway

Meet Your Friends

Come To The

College

Coffee

Shop

Examination Schedule

All examinations will be held in regularly scheduled classrooms, with the exception of Freshman Composition 1, Religion 1, 2 and 13, and Student Teaching.

Monday, January 21

7:55—Second period classes meeting
T.Th., T.Th.F.

10:20—Intro. to Old Testament Sa,
Room L-104.

Intro. to Old Testament Sb,
Room S-108.

Intro. to Old Testament Sc,
CB.

1:00—Life of Christ Sa, L-104.

Life of Christ Sb, S-108.

Life of Christ Sc, CB.

History Christian Church Sa,
M-109.

History Christian Church Sb,
M-215.

2:30—Seventh period classes meeting
M.W., M.W.F., M.Th.F., T.F.,
T.W., T.Th., F.

Tuesday, January 22

7:55—First period classes meeting
T.Th., T.F., T.Th.F.

10:20—Third period classes meeting
M.W., M.W.F., M.T.W.Th.,
M.T.Th.

2:00—Frosh Comp. 1—all sections:
Sa, Sd S-108

Sc, Sh S-108

Sb, Sf L-104

Se, Si L-117

Sg CB

Student Teaching:

176a M-229

176b M-216

176cd M-111

Wednesday, January 23

7:55—First period classes meeting
M.W.F., M.W., Daily, and
M.W.Th.

"Where Blossoms Grow," by San Souc,
and a Swedish folk song, "Vaarvenda
Friska," arranged by Hagg.

Other artists appearing on the special program were Neal E. Ely, clarinetist, and James H. Ryan, pianist, both of Tacoma.

10:20—Third period classes meet
T.Th., T.Th.F.

2:00—Fourth period classes meet
M.W.F., M.T., Th., M.T.W.
M.W.Th.F., Daily.

Thursday, January 24

7:55—Sixth period classes meet
M.W.F., M.T.Th., M.W.,
M.Th.F.

10:20—Fifth period classes meet
T.Th., T.Th.F.

2:00—Second period classes meet
M.W., M.W.F., M.T.,
M.T.Th.

Friday, January 25

7:55—Fourth period classes meet
T.Th., T.Th.F.

10:20—Fifth period classes meet
M.W., M.W.F., M.T.Th.,
M.Th.F.

2:00—Sixth period classes meet
T.Th., T.Th.F.

Examinations for all special classes will be given during the regular class time during examination week.

Raymond Electric Company

Engineers - Contractors
1922 Pacific Ave. BR. 1711

Neal E. Thorsen

TRICKS - JOKES - MAGIC

Costumes - Tuxedos - Serpentine

926½ Broadway MA. 4861

ART'S SHOE SHOP

Dyeing and Repairing
Saddle Refinishing

On Garfield St.

Permanent Waving—Hair Styling

MARGIE'S BEAUTY SALON

Back-to-School Hair
Styling

Parkland Centre GR. 7471

DILL HOWELL Sporting Goods

929 Commerce St. Tacoma
MA. 5665

Need a Haircut?

Parkland Barber Shop

DANIELS HARDWARE

★ ★

On the Highway Corner

PACIFIC AVE. & GARFIELD

BUSCH'S
Drive In

Come as you are
... eat in your
car—

- Fresh strawberry Soft
Kreme cones
- 10c; dishes 20c.
- Giant creamy
rich shakes, 24
different flavors.
30c; malts 35c.

Northwest's Outstanding Drive-In

LaCrosse Printers

CARDS
POSTERS
ANNOUNCEMENTS

Printers of Your

MOORING MAST

Located in
Old Chapel Building,
On the Campus