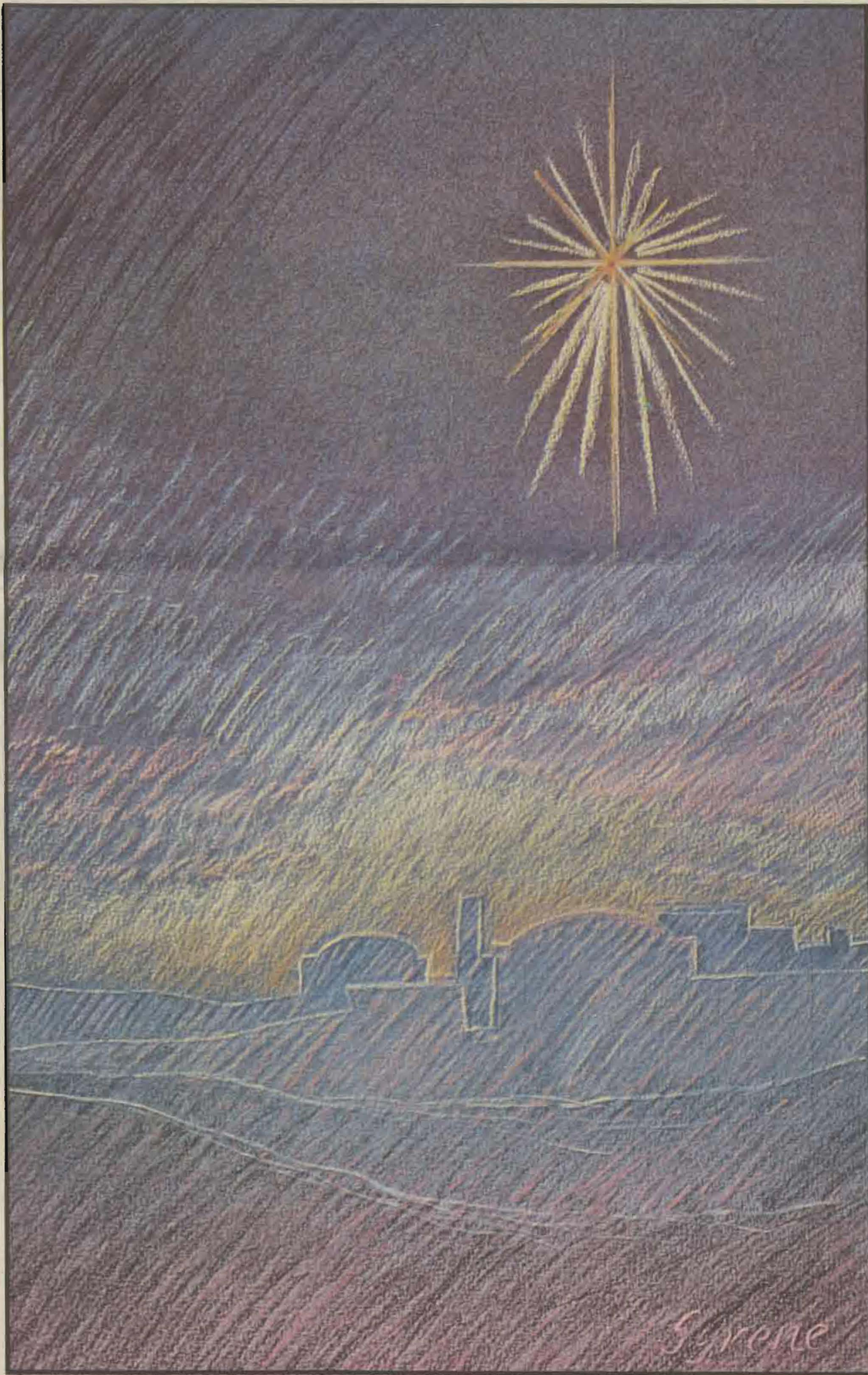


Scene



One Of The Largest Gifts 4

The gift of a 31-unit apartment in Seattle has been received by PLU from Donald and Virginia Haas. It is one of the largest gifts ever given to PLU.

KPLU-FM Pleases Listeners 8

A record fundraiser and new equipment spell progress as PLU's NPR-affiliated radio station begins second year of new format.

Natural Sciences: A New Era B1

Dedication of the new William O. Rieke Science Center Jan. 27 will usher in a new era for the Division of Natural Sciences at PLU. A special Scene section celebrates the historic campus event.

Realization of A Dream B8

Dr. K.T. Tang is an internationally-renowned nuclear physicist. A recent return to China to deliver a series of scientific lectures was his first visit to his homeland in more than three decades.

Cover

This peaceful Bethlehem tableau by Seattle artist Syrene Forsman is the visual theme for PLU's 1984 Christmas Concerts and the President's Christmas message. See page 6.

Published six times annually by the Office of University Relations, Pacific Lutheran University, P.O. Box 2068, Tacoma, WA 98447 (USPS 417-660). Second class postage paid in Tacoma, WA. Postmaster: Send address changes to Development Data Center, PLU, Tacoma, WA 98447.

Large Influx Of International Students Due To PLU's Academic Reputation

By Lisa Dyer

There are 218 international students from 30 countries attending PLU this year to "taste American cookies," as freshman Rasheed Almutairi from Kuwait put it.

PLU's international student population has doubled over the past two years. Cristina Cables, director of foreign and adult studies programs, explained that the students, most of them from Europe and Asia, "are here to study through the sponsorship of their governments." Most did not come here to study abroad, but more properly put, "have been sent abroad to study."

The majority of international students have been sent to PLU and other universities in the U.S. and abroad to study subjects such as computer science and business in which their own country "feels they are underdeveloped," stated Rasheed. In return for the financial support of their personal and educational expenses, the 42 Malaysians and some other international students at PLU will be obligated to work for their government for a minimum of 10 years upon graduation in designated job fields.

The largest group at PLU, 48 Norwegian students, attend PLU on a slightly different basis from most of the university's interna-

tional students. Recruited by PLU Registrar Chuck Nelson, most of these students attend PLU with the assistance of government loans similar to that of a U.S. Guaranteed Student Loan. Loans, or sponsorships, however, are only granted for certain majors. Otherwise students must pay from their own pocket.

Although Norwegian students are not obligated to work for their government, the general idea of promoting and advancing specific subjects in their country is important to them also.

"No doubt it was PLU's reputation for well integrated computer science and business programs that attracted our government toward the selection of your school," stated freshman Khairil Hanzah, a Malaysian business major. "But though we have been sent here to take in and learn educational aspects, we would also like to experience America socially and culturally. We try to share our own culture as well."

"Adjustments have not been too hard," stated Khairil. "Our major problem is religious — schedule conflicts with our prayer times."

He added that he has some difficulty approaching people. "Though we'd like to get to know others, we're too shy to talk — especially the girls," he said, laughing.

Rasheed, on the other hand, had few problems with adjusting to the new social atmosphere. He said, "I really like the freedoms you have in America. We are here to take whatever good we can and apply it to our own government and economy. I believe both the individual and the government is benefiting from the experience of a melting-pot society. PLU holds a lot of cultural diversity. The people are friendly — and they don't reject you because you're foreign. I guess that's why I chose to come here. I feel comfortable."

As chairperson for one of the three advisory committees of PLU's International Student Organization, Rasheed explained that "one of the main objectives of the organization is to increase cultural awareness" for both international students and American PLU students. The organization sponsors lectures and international events, "emphasizing cross-cultural communications," stated Cables.

One of the organization's highlights this year will be an Intercultural Awareness Week, March 4-9. It will begin with an intercultural symposium on Monday and conclude with the annual Intercultural Fair on Saturday. Student panels, country presentations and displays will also be featured.



Rasheed Al-Mutairi, left, and Khairil Hamzah

PLU Group May Be First American Study Tour In Far Western China

Participants in a Pacific Lutheran University study tour next June will be among the first Americans to visit Kashi in far west China.

The city, near the Soviet, Indian, and Afghanistan borders, has only recently been opened to visitors, according to tour host Dr. Greg Guldin, PLU Global Studies director. To his knowledge, no other American group has yet visited Kashi.

The three-week tour beginning next May 30 will visit several exotic and unfamiliar regions in central and west China in addition to the more familiar tourist stops in the East.

Kashi is the China embarkation point of the Marco Polo, or Silk Road, one of history's great commercial trade routes. Because the PLU tour will visit several points along that road, it has been labeled the Silk Road Study Tour.

This tour may be of particular interest to persons interested in art, Guldin indicated, citing the varieties of cultures to be encountered on the tour. West and far west China show strong Indian, Persian and even European influences, rather than traditional Chinese culture, he explained.

Two years ago a PLU tour was

one of the first American groups to venture as far west as Urumqi on northwest China.

Kashi is several hundred miles further west. "This exotic part of China belongs to Central Asia and is populated by Muslim minorities," said Guldin. "Their cultural affinities lie more with Soviet Inner Asia, Siberia, Tibet and Mongolia."

Xining, a Tibetan-oriented, recently opened city in the southern west, is also on the itinerary, as is Xian, the ancient capital and site of the vast underground terra-cotta army buried 2,100 years ago with China's first emperor.

Other tour sites include an old ghost city where treasure can still be found in the dust of the streets, the oldest Buddhist shrines in China, as well as Buddhist caves and grottoes and, of course, the Great Wall. Cities include Hong Kong, Beijing, Lanzhou and Turpan.

Both Guldin and the tour co-leader, his wife Mun-Jong Fung, have taught courses on China and Asia at PLU, are tri-lingual, and have made numerous China visits. The tour may be taken for academic credit.

For more information write to the PLU Global Studies Program or call (206) 535-7661.

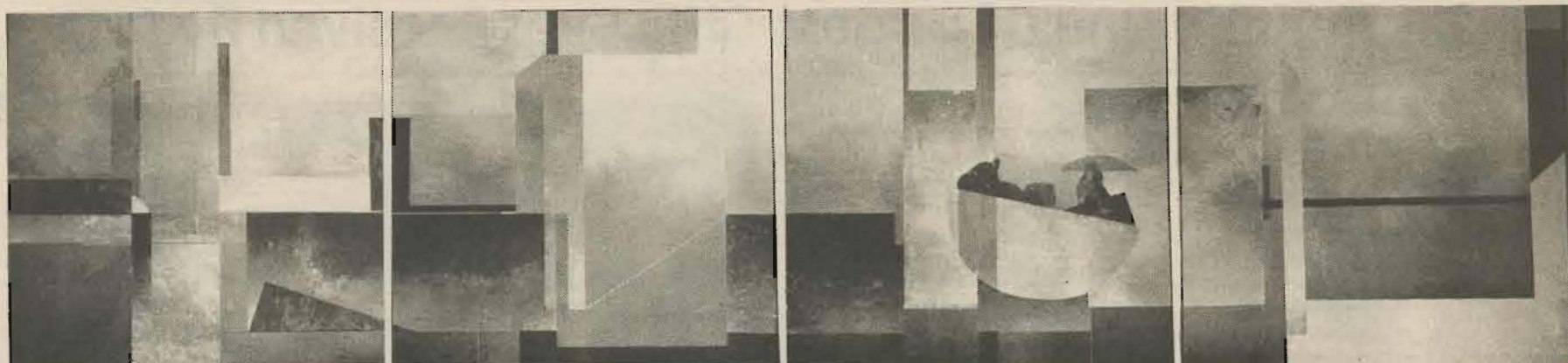
Trade With China Topic Of Barnowe Seminar Topic

"Doing Business with China" was the topic of a seminar presented by Dr. Thad Barnowe at a recent national conference of Beta Gamma Sigma, national business honorary.

Dr. Barnowe, associate professor of business administration at PLU, spent the 1982-83 academic year as a Fulbright Lecturer at Zhongshan University in the Peoples' Republic of China.

"We selected Dr. Barnowe because of his significant in-depth knowledge and understanding of the cultural, managerial and regulatory differences between the U.S. and China," said Ronald J. Patten, national BGS president, following the San Diego conference.

BGS has over 225 student chapters at schools and colleges of business nationwide.



"La Muraille"

Snider Donates Gatewood Oil Painting To PLU

"La Muraille," a 32-foot oil painting by Galen Gatewood of Seattle, has been donated to Pacific Lutheran University by Kenneth M. Snider.

Snider, a Seattleite who former-

ly lived in Tacoma, donated the painting in memory of Dr. Sherman S. Pinto, a Tacoma physician. Dr. Pinto's daughter, Marcia Pinto Moe, is assistant director of the Washington State Arts Commis-

sion and wife of Dr. Richard Moe, dean of the PLU School of the Arts.

The new addition to the PLU permanent collection has been on display for the past five years at the Seattle Center Playhouse.

The abstract four-panel work in beige, lavender and green was officially accepted during a Regency Concert Series program at PLU Nov. 15. It now hangs in Chris Knutzen Hall in the University Center.

'84 Grad Creates Campus Sculpture Inspired By Greece's Parthenon

What would the Parthenon have looked like if the Greeks had had ballbearings?

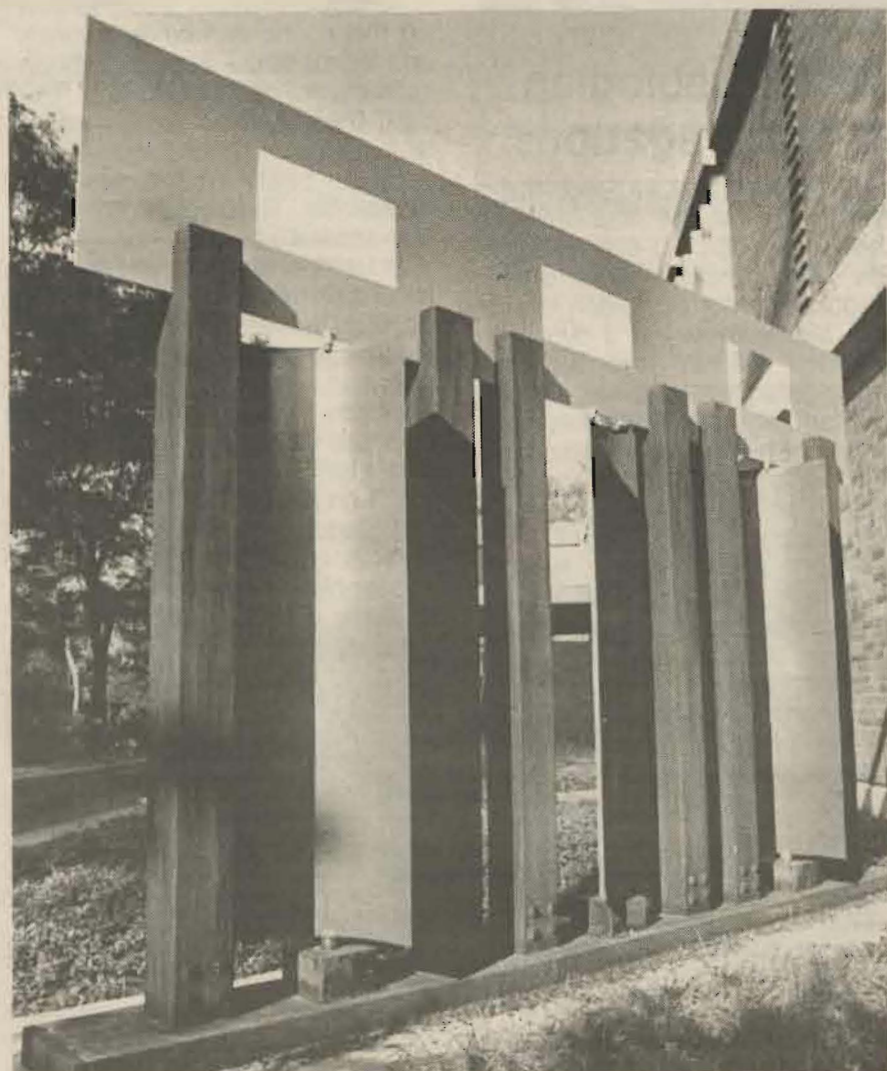
That is the theme of a recent work added to the outdoor sculpture collection at Pacific Lutheran University.

The painted steel work with kinetic panels is the result of a university commission to Cam Schoepp, a Chicago native who graduated from PLU with an art degree last spring. He currently lives in Tacoma, and plans to

attend graduate school next year.

The "Parthenon" sculpture is located at the southwest corner of the Mortvedt Library, advantageously placed so it can be seen from both the east and west ends of campus. According to Schoepp, the sculpture was intended to complement the architecture of the library and to "add campus color."

Proposed campus sculptures are approved by a campus art committee.



"Parthenon" campus sculpture



WALK IN THE FOOTSTEPS OF BACH Celebrate the Bach Tri-centennial In person!

From Bach's birthplace in Eisenach, to Leipzig, the place of his death, you will trace in living color and sound the remarkable life and career of this renowned Lutheran musical and theologian.

- You will be a part of the impromptu (and historic) choir (our group) intending to sing at worship in Stormthal, E. Germany. Bach dedicated and played the organ in this village church. It has never been recorded, and is perhaps the only unrestored Bach instrument remaining today.

- Professor David Dahl, will play historic Bach organs throughout the itinerary, and you will sing favorite Bach chorales where they were composed. Take home your own music tape of the trip.

- You will attend Special European Concerts in honor of Bach (and Handel and Schuetz) in Leipzig, Dresden, Hamburg, etc.

- You will visit some Luther sites.

- And there will be shopping and sightseeing with a wrap-up in Copenhagen.

WALK IN THE FOOTSTEPS OF BACH

...For 2 hours PLU credit or for pure joy and refreshment.

...For 14 days — July 19-Aug. 1, 1985

...For \$1995 including airfare, fine hotels and most meals.

...With hosts Prof. David P. Dahl, Associate Professor of Music, PLU

Dr. Martin J. Neeb, Executive Director of University Communications, PLU

Reserve your space now! For brochure write:

BACH
University Communications
Pacific Lutheran University
Tacoma, WA 98447



Haas Annuity One Of Largest Gifts Ever Received By PLU

One of the largest gifts ever received by Pacific Lutheran University has come in the form of a charitable gift annuity, according to PLU President William O. Rieke.

A 31-unit apartment building had been given to PLU by Donald and Virginia Haas of Seattle. Value of the gift is estimated in the high six-figure range, Rieke indicated.

In return for their generous gift, the Haas' will receive tax benefits and a guaranteed monthly income for life, according to Ed Larson, PLU director of planned giving, who has assisted Mr. and Mrs. Haas throughout the gift planning process.

The apartment, located in the Queen Anne area of Seattle, was built in 1930 and acquired by the Haas' in 1935. Since 1940 Haas has served as president of the Apartment Operators Association of Seattle-King County, which maintains offices in the donated building.

Luther Bekemeier, PLU vice-president for development, explained that a charitable gift annuity is one of the oldest and simplest ways of making a deferred charitable gift. It combines gift and investment, so that in exchange for cash, marketable securities or real estate, the beneficiary, in this case PLU, will guarantee a lifetime income to the donor.

There is a tax deduction for the gift, a portion of the monthly income is tax free, and the donor is free of management worries, Bekemeier added.

The proceeds from the Haas gift will be earmarked for the PLU endowed scholarship fund. As such, a portion of the gift will qualify for one-for-two matching funds from a Lutheran Brotherhood Life Insurance Company challenge grant, Bekemeier indicated.

Explaining the decision to set up the annuity with PLU, Haas said, "It



Virginia and Donald Haas

provides us a way to give something to a school that has an outstanding reputation and that isn't a burden to taxpayers." Mrs. Haas noted their ties with the

Norwegian heritage and the Lutheran church.

Haas attended the University of Washington and Mrs. Haas was a student at Cornish Institute in Seattle.

Volunteers Key Science Center Capstone drive

One-hundred Seattle and Tacoma area volunteers are spearheading a six-week Pacific Lutheran University fund drive aimed at raising \$275,000 in gifts and pledges from business firms.

According to campaign director Sammie Davis, the effort will raise matching funds stipulated by a recent \$400,000 challenge grant from the Kresge Foundation of Troy, Mich.

The grant and matching funds are to be used for completion of the William O. Rieke Science Center, which will be dedicated Jan. 27, 1985.

Davis indicated that 500 calls are being made by volunteers between Nov. 1 and Dec. 15.

Designated Tacoma area campaign leaders include Dr. Thomas Anderson, Concrete Technology Corp.; William Baxter, United Supply Co.; Gene Burgoyne, retired; Scott Buser, IDS-American Express Financial Advancement; Charles Cereghino, Weyerhaeuser Corp.; Jim Chartrey, Washington Natural Gas; Gary Gonter, Gonter's Music City; Charles Knight, Concrete Technology; Fred Nelson, Washington Natural Gas; Bill Rogers, Almond & Rogers Associates; and Vern Taft, Architectural Woods.

PLU Regents Gary Baughn of Nordstroms and Frank Jennings of Eddie Bauer are in charge of the Seattle area volunteer group.



Rev. Dan Erlander

LITE Offers New Resident Theologian Program For Lutheran Congregations

The gifts and resources of teacher-theologians will be available to Lutheran congregations in the Northwest through the new Resident Theologian Program offered by the Lutheran Institute for Theological Education (LITE) at PLU.

According to LITE director Dr. Walter Pilgrim, the program will (1) enable congregations to have a clearer concept of what it means to be Lutheran and ecumenical within the body of Christ; (2) offer a theological resource to the ministry of smaller congregations; (3) help congregations develop specific plans for continued theological growth and implementation of their ministries; (4) help neighboring congregations become better acquainted and to affirm their joint ministries within their community; and (5) include diverse groups within the congregation (leaders, teachers, youth, seniors, children, singles, new Lutherans etc.) in reflections upon role and mission.

Eight area clusters of congrega-

tions will host the first resident theologian Sept. '85-May '86. He is Rev. Dan Erlander, director of the resource center at Holden Village and widely known as a dynamic, creative teacher (see separate story). Erlander, who has written outstanding study materials on a variety of topics, such as Baptized We Live and By Faith Alone, will spend two to three weeks in each of the eight area clusters.

Pilgrim explained that he will work with local committees on event schedules, and that primary financial support will come from the congregations served.

The program has been endorsed by each of the Northwest district/synod bishops. One wrote, "I am particularly pleased and intrigued by the possibility that this program can be available to small town and rural congregations."

LITE is currently accepting requests for 1985-86. Potential congregation clusters should consult with one another, then write to LITE at PLU. For more information call (206) 535-7341.

Alum Is First LITE Resident Theologian

By Richard Londgren

Serving as director of the resource center at Holden village has been the fulfillment of a dream for Rev. Dan Erlander, a 1962 PLU alumnus.

Next year Erlander, a former PLU art major who combines graphics and words to convey his Christian convictions, will be the first resident theologian to serve clusters of Northwest Lutheran congregations on behalf of the new LITE Residential Theologian Program (see separate story).

At Holden, a retreat center on a mountain above Lake Chelan in Central Washington, Erlander, teaches, preaches and counsels, but also collects and generates Christian informational materials to share with some 6,000 guests and staff members, plus over 1,800 on a quarterly mailing list.

A graduate of Augustana Seminary in Rock Island, Ill., Erlander applies his art skills to his ministry in many ways. He designs, does lettering and prepares drawings for booklets and pamphlets he prints at Holden. For a slide show about his 1983 trip to China, he mixed informational sketches with photography.

His drawings also enliven tracts he has written for Lutheran publications.

Erlander counts on his pictures being worth a thousand words, because he believes in brevity as well as levity.

Erlander may be contacted c/o Holden Village, Chelan, Wash. 98816.

PLU Publishes Jerke's Lord's Prayer Meditations

In 1976, during his tenure as university minister at PLU, the late Rev. Donald Jerke presented a series of chapel meditations on the Lord's Prayer which PLU President William Rieke has described as "a treasured landmark in the life of PLU."

Those meditations have been published by the PLU Press as a memorial to Rev. Jerke. Harvey Neufeld, executive director of church relations, and David Yagow, deputy provost, edited the manuscript of *Meditations on the Lord's Prayer*.

Jerke served as university minister from 1975-78. He was then appointed as PLU vice-president for student life. He died Oct. 24, 1981.

"Jerke often mimeographed his sermons for students," Neufeld said. "They were very popular." Yagow said that he wanted to publish the sermons because Jerke was a very close friend and because they are "the most brilliant meditations on the Lord's Prayer I have ever heard or read."

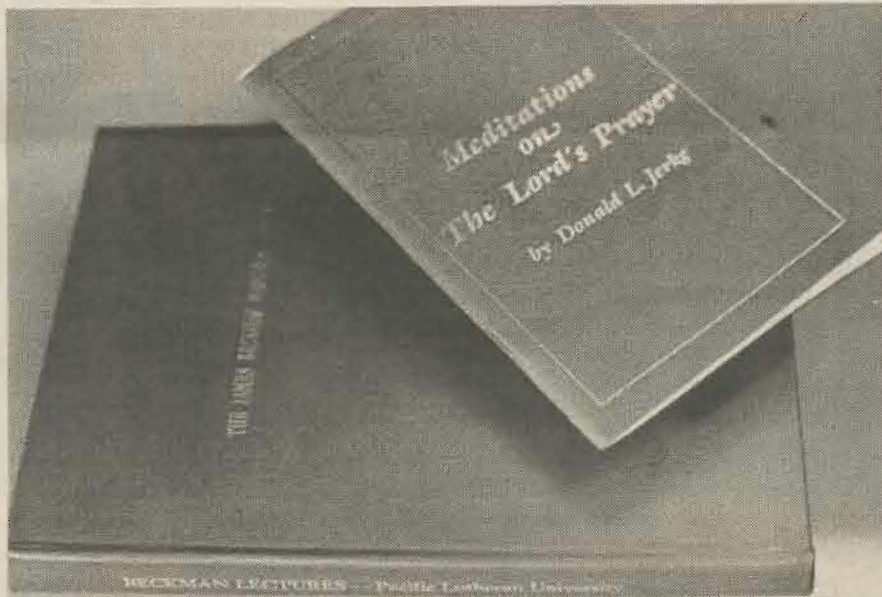
The project was a community effort. PLU's Central Services volunteered the printing, and campus graphic artist Paul Porter donated design time. Sandra Jerke of Tacoma, wife of the late pastor, provided funds for printing materials and paper.

Proceeds from the book sales will go to the Jerke Scholarship Fund.

Copies may be ordered by sending \$4 to the PLU Church Relations Office. For more information call 535-7423.



Deputy Provost David Yagow and library director John Heussman examine the recently published James Beckman Memorial Lectures.



Two new PLU publications: *The James Beckman Memorial Lectures* and *Meditations on the Lord's Prayer* by Donald L. Jerke.

Faith And Life Lecture Series Is Established

A new lectureship, known as The Annual Faith and Life Lectureship, is being established at PLU. The first speaker in 1985 will be Dr. Jaroslav Pelikan. The establishment of this new series coincides with the publication of the Beckman Lectures. (see photo)

Over a period of five years theologians of national and international reputation lectured at Pacific Lutheran University under the sponsorship of The Beckman Memorial Lectureship. The appeal of these challenging lectures, both to the general public and the academic community, made the lectureship one of the significant academic and theological events on the campus. This new lectureship will continue that series.

In the spirit of the former Beckman Lectureship series, this lectureship will promote public and lively discussion between students, faculty, and visitors on key issues of Christian faith.

General themes for the lectureship will be: 1) Foundation of faith: Biblical, historical, and contemporary theology. 2) Faith in the world: ethics, the arts, and scientific perspectives. 3) Faith and the church: liturgy, ecumenics, ministry, and education.

The lectureship is presently being supported by the Jerke family and relatives in memory of the late Rev. Donald Jerke.

A fund drive with a goal of \$25,000 is planned for 1985 to permanently endow the new series.

PLU Hosts '85 CommUniversity Mini-Courses

Pacific Lutheran University, together with the University of Puget Sound and the Associated Ministries of Tacoma/Pierce Coun-

ty, is sponsoring the third annual CommUniversity.

CommUniversity draws together people from many religious

affiliations for a series of courses held at PLU on the four Sundays in February. Drawing upon local religious leaders as instructors, CommUniversity provides community people with opportunities for inspiration, education, and interaction with one another.

Dr. James A. Sanders will present the keynote address, "Understanding True and False Prophecy," at the opening of CommUniversity on Feb. 3 at 3 p.m. in the University Center. Dr. Sanders is the Elizabeth Hay Bechtel Professor of Intertestamental and Biblical Studies at the Claremont School of Theology and Professor of Religion at the Claremont Graduate School. Over 160 scholarly articles and reviews have been published by Dr. Sanders. His most recent book is *Canon and Community: A Guide to canonical Criticism*.

For information regarding course offerings and registration call the PLU Church Relations Office at 535-7423 or Associated Ministries in Tacoma at 383-3056.



Five scientists from Cheng Du University of Science and Technology in the People Republic of China visited PLU in October. On a nationwide tour of colleges and universities, they selected PLU primarily because of the international reputation of Physics professor Dr. K.T. Tang, left. Cheng Du President Jing-hua Wang, center, introduces physics department chairman Quing-Quam Gou to PLU President William Rieke. Former Cheng Du President Zheng Fang is at the right.

1984 Lucia Bride

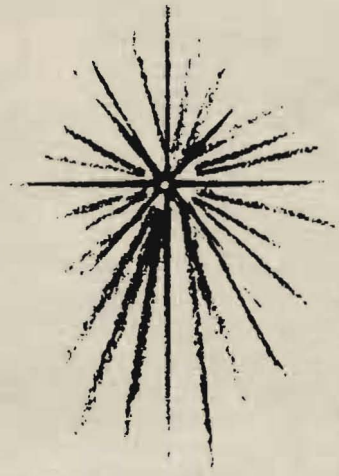


Coleen Buren, 19, a sophomore from Salem, Ore., is PLU's 1984 Lucia Bride. She was honored during the annual campus festival Nov. 30. The daughter of Dick and Inez Buren is a graduate of South Salem High School.

6

The President

He is our
PEACE



Child of peace who came so long ago,
Child of love still with us here we know,
May thy tears of passion freely flow
Melting hearts within us cold as snow.
He is come to be our dearest King.
He is come to take from us our sin.
Jesus come and make us safe within You.
— Jeffrey Van

*May the holy child of Bethlehem
grant you his peace now and always*

President and Mrs. William O. Rieke
and Family
Pacific Lutheran University

From left, front row: Joanne Rieke, Joanna Smith, Bill Rieke; back row: Marcus Rieke, Jeffry and Susan Smith, Eileen and Stephen Rieke.

Reflections On A Typical PLU Parent's Response



By John Adlx
Parents Club Representative

I have listened to parents in many different settings. If they could write a corporate letter to PLU, it might read something like this:

Dear PLU:

Four years ago we began the college search. We were first attracted by your strong academic program. The beauty of the campus helped in our final decision as well. Even after receiving your financial aid award, we wondered if we could manage; we knew we would have to stretch. It certainly has been worth it. Fred has grown in his years with you. He studies a good deal, and has been awakened with a hunger for learning. He has taken many different classes, which we know has prepared him well for whatever he chooses to do. His parttime job is important financially, but it also has taught him some new skills. We were pleasantly surprised that he had a part in the next play, and not too disappointed that his intramural basketball team came in last. Though his life in the dorm has had its ups and downs, he has made some good friends. He really does not complain much about the food. We appreciate his opportunity to participate in the campus religious life. To struggle with values in life's decisions seems to go on forever. It is gratifying for us to know that in the challenging and competitive process of learning and growing and preparing, there are also people who care. Thank you PLU!

Sincerely,
PLU Parent

Q Club Nears \$4 Million In Total Gifts Since 1972



By John Aakre
Associate Director of Development

Thirteen years ago a small group of friends and alums of Pacific Lutheran University gathered together to celebrate a small milestone.

The PLU Q Club had been founded several months earlier and when the membership reached 100 they held a banquet. Those charter members of the Q Club raised \$51,000 that first year to help students attend PLU.

Since that time some remarkable things have happened. Today there are over 1,200 Q Club members. While most live here in the Northwest, we have members in 31 states, one in England and another in Saudi Arabia!

Thanks to the continuing generosity of many people, the Q Club will soon top the \$4 million mark in total contributions since its modest beginnings in 1972. Those gifts have helped literally thousands of students receive a PLU education. Without that help, many could never have afforded to come here.

When I talk to people they sometimes ask me how their \$20, \$40 or \$83 a month contribution to the Q Club can make a difference. Though its hard to believe, I just tell them the truth, that's how we've raised nearly \$4 million so far — one person at a time.

* * *

Alaska Airlines has DONATED two round trip tickets to encourage Q Club recruitment. The two people who recruit the most new Q Club members and/or secure the most increased pledges to a higher Q Club level will win a FREE ticket.

The contest began in mid-November and will run until December 31st. Remember, by recruiting a new member you can effectively **double** your contribution. If you'd like to help, just call our office and we will work together with you to get another Q Clubber.

Call Dave Berntsen or John Aakre at (206) 535-7429.

New members since the last issue of SCENE:

Senior Fellow

Anonymous

Increase to Senior Fellow

M/M John N. Andersen, M/M John Bustad, Sr., J. Reynold Jacobson, M/M R. Ted Reep, M/M C. Davis Weyerhaeuser, and M/M Elmer White.

Fellows

M/M Milton Halvorson.

Increase to Fellow

M/M Bernard Anderson, D/M Curtis Huber and M/M Tracy Totten.

Increase to Associate Fellow

M/M F. Talmage Edman, R/M Robert Rieke, and Christ Lutheran Church, Spokane.

Members

R/M Arnold Anderson, M/M Paul Berg, Bethany Lutheran Church, Spanaway, David Bublitz, M/M James Crary, M/M Bob Curtis, Beth Davis, M/M TERRY Edwards, D/M Mayo Erickson, M/M Dennis Fatland;

Richard Finch, Michael Fox, Stephen Gerstmann, M/M David Gutzler, M/M Gilbert Hanson, M/M Vernon L. Hanson, R/M Theol Hoiland, Hope Lutheran Church, Tacoma, R/M Orville Jacobson, Rudy Lundmark;

Marlaine Mars, Deborah Mayers, M/M Keith Newburn, M/M Darrel Nichols, Florence Orvik, Peace Lutheran Church, Puyallup, M/M John Rasmussen, D/M Gilbert Roller, Dr. Gerald Schmeling, Malcolm Rice, R/M Luther Watness, M/M William Watson, and Zion Lutheran Church, Kent.

Night Life



By Harvey Neufeld,
Executive Director of Church Relations

The vast expanses of the Dakotas or Montana, Eastern Washington or southern Idaho all have highways punctuated by famous "watering holes" and rest stops for truckers and travelers, troopers and tourists. At night the sky is aglow with color as garish neon signs beckon and entice the weary driver to break the spell of interstate hypnosis. The Circle T. The Buckhorn. Myrtle's. Barney's. Or maybe just plain Generic Cafe! When you've seen one, you'll have known them all. What's so inviting about them?

Religiously, they are very leveling. You can't tell the Mormons from the Pentecostals, the Baptists from the beatniks, the high church folks from the hitchhikers. I never see ministers. I think, like me, they are camouflaged in wool shirts and work boots. At midnight on the freeway people love anonymity.

The surroundings are comfortable and predictable, always warm. The walls feature calf-roping scenes, wild eyed stallions, and bears breaking up a fishing camp. Occasionally a piece of art work is hanging above the booth, like the mining pick menacing table 14.

The clientele is easy going and doesn't care who else is there. A bleary eyed trucker fills his stainless steel coffee thermos, inadvertently adding a few cigarette ashes for flavor. Always there seems to be a new waitress acting out, like a lead in a play, her first job on the grave yard shift. The entire business is supervised by a gravelly throated dowager of the deep fry. Everyone knows her. She loves the lonely. She tenderly heats up a baby's bottle while a couple of teens are playing big time night life, just on the way home from the junior high tolo.

These are good people. And my time with them is well spent. At this time of year our memory turns to one who had "no form or comeliness" that we should desire to see him. These folks weren't pretty either. But to be among the ordinary folks, the night travelers of life, that's pretty good stuff. No telling who will enrich our life at Barney's on the Interstate. The coffee was good. It was time to head out. "You take care, now. Have a good night," said the gravelly voiced lady. She meant it. It wasn't in the green hymn book, but I took it as a blessing. Home was just over the next hill.

Rapidly Increasing Fundraising Success Shows Growing Popularity Of KPLU-FM

KPLU-FM, PLU's National Public Radio-affiliated radio station, is making a name for itself, and the university.

In Western Washington, its stereo jazz-news-public affairs format, just one year old, is proving to be an unqualified success. Just how successful is reflected in the financial support the station is receiving from listeners.

Nationwide, it is beginning to receive exposure through feeds to NPR. There have been several news features aired, including one on Coach Chuck Knox and his Seattle Seahawks. Jazz concerts from area clubs, such as Jazz Alley in Seattle, have also been submitted.

On Nov. 14, FM 88 wrapped up its sixth semi-annual on-air fundraiser with cash and pledges totaling just over \$60,000. That figure was \$10,000 over goal and

four times greater than income from the station's first on-air appeal only two-and-a-half years ago.

According to station development director Dean Zuch, the three fundraisers held while still a classical music station raised \$50,000. The three appeals since the format change have brought in over \$130,000, even though the first came only days after the change was made.

Zuch believes that the station not only found a niche for itself in the highly competitive and volatile radio listener market, but that the niche is one that is just beginning to see its growth potential.

"Today, on a national level, the jazz market is still smaller than the classical market," he said. "But it's a growth market. It is where the younger adults, the Baby Boomers, seem to be going as they gradually grow away from rock."

And while KPLU-FM had quality competition in the classical market, there is virtually no quality competition in the jazz market.

A typical jazz listener is also likely to be attracted to the station's news and public affairs programming and to PLU generally. The profile is that of professional people, highly educated, with good incomes.

"Our news has considerably more depth than you get from other news stations, which are essentially headline services," Zuch continued. "National Public Radio's 'Morning Edition' and 'All Things Considered' try to give you a more complete story. You could compare it to the difference between the New York *Daily News* and the New York *Times*."

NPR news covers not only the events of the day, but broader topics and issues — science, economics, art, music, dance, and many more.

FM 88's stereo signal is constantly being upgraded. The increase to 100,000 watts four years ago theoretically provided service to more than two million listeners from Vancouver, Wash., to Vancouver, B.C., but since FM is a line-of-sight signal, there were still many pockets in western Washington unable to hear the station.

As of this month there are four new translators (signal boosters) in operation in southwest Washington that open up new listener areas in Aberdeen-Hoquiam, Raymond-South Bend, Longview-Kelso, and vastly improve the signal around Centralia-Chehalis. The signal should be particularly appreciated by I-5 travelers, who traditionally lose most program selection between Chehalis and Longview.

The translators were funded by a grant from National Telecommunications and Information Administration.



KPLU-FM staff celebrates first anniversary of jazz format at Jazz Alley in Seattle. From left, Scott Williams, Jim Wilkie, Dee Ferko, Ken Wiley, Dr. Martin Neeb, Dale Bundrant, Dean Zuch and Charles Tomaras.

Within the next few months a translator will be installed near Orting to improve the signal in the Puyallup and East Tacoma area. Another possible installation would be north of Seattle to reach a number of missed pockets in northwest Washington.

In addition, KPLU-FM is on cable systems in Seattle and Olympia.

While a format change and technological advances have made an important difference, so have the efforts of station management and staff, according to general manager Dr. Martin Neeb.

For example, he explained that jazz music director Charles Tomaras, hired a year ago, has many connections in the jazz community and with record companies. Both he and morning host Dale Bundrant have Seattle area followings based on previous tenures with KJZZ in Seattle and CJAZ in Vancouver, B.C. respectively.

Tacoma Ken Wiley brings his own large jazz collection and historical perspective to weekend p.m. programs. Jim Wilkie, for many years a classical and jazz announcer at KING-FM, does a late night stint on Fridays and Saturdays.

News director Lynn Francisco came recently from KING-AM in Seattle. Local news coverage is expanding and includes a Puget Sound area version of "All Things Considered," Neeb indicated.

And KPLU-FM has been visible in the community, broadcasting live from the Tacoma Dome, Pantages Centre, the new Tacoma-Sheraton Hotel and elsewhere. This past month its first anniversary of jazz party was held at Jazz Alley in Seattle, where a sold out house heard Tacoma-born jazz singer Diane Schuur.

Schuur, who is blind, recently performed at the White House at

the invitation of Nancy Reagan. FM 88 has been enthusiastically airing cuts from her newest album, "Deedles," since early October.

Like its signal, which regularly bounces off the Westar satellite 23,000 miles out in space, KPLU-FM is flying high. But if growth in the numbers and enthusiasm of its listeners during the past 12 months justifies an optimistic prognostication, its effective outreach and impact on western Washington may be only the beginning.

Regents Approve Worship Center Feasibility Study

A feasibility study to determine availability of funds for a new worship center at PLU was approved in November by the PLU Board of Regents.

Board chairman Rev. David Wold will chair the study, which will be conducted only for that purpose and exclusively within the church community.

In other business, PLU President Dr. William O. Rieke presented plans for a university-wide Centennial Plan, which will receive input from faculty, students, administration and staff during the coming year.

The plan, intended to guide the university through the 1990 centennial year, will be presented for Board adoption in November 1985.

The Regents also approved the concept and site for the proposed new theatre building, and set Summer Sessions '85 tuition at \$120 per credit hour.

Nisqually Plains Room Has New, Expanded Space

The Nisqually Plains Room, a collection center for Northwest historical memorabilia located for many years in Mortvedt Library at PLU, has been moved to East Campus.

According to director Dr. Art Martinson, PLU professor of history, the move allows more space for expansion and fits in nicely with the community service emphasis of East Campus units.

The move, in turn, allows for expansion of the Scandinavian Immigrant Collection, a similar resource center which previously shared the library space. As a result of the move, it also has been expanded and reorganized, coordinator Kris Ringdahl reported.

The Nisqually Plains Room houses a variety of studies, documents and photographs as well as an established archive collection that is designated on the State Register. Just as important is the increased work, study and conference space now available, Martinson noted.

Community study projects include *The Working Waterfront* and *Hart's Lake School: Symbol of Pioneer Education*. Both were co-authored by Dr. Martinson and Dr. Ron Magden, also of Tacoma.

A Parkland School (East Campus) history is underway, Martinson explained. "It will document not only its near-century of operation since 1888, but its relevance to the community, both during its school days and in its present role," he said.

A Northwest Trek education packet for public schools is also available. NPR facilities are available by appointment (535-7173).

Defense Is Strong Suit As Lutes Finish '84 Season With 6-3 Mark

By Jim Kittilsby

Two bands of Wildcats and a gang of Loggers climbed the fence in 1984 to prey on the Pac. Those who couldn't cope with defense were the Clan, Vikings, Boxers, Pioneers, Bearcats, and Pirates.

Defensive opportunism was PLU's strongest suit during a 6-3 football season. The Lutes had just two 100-yard games from its running backs and only four 200-yard passing performances from quarterbacks.

Fast Finish Nets Booters WCIC Runner-Up Slot

In the beginning, the Lady Lute soccer squad couldn't play well. At the end, they literally couldn't play at all.

After a lackluster showing in the season-opening Costello Cup Tournament, PLU settled down. The Paclutes won six of their last seven games and posted a 12-5-1 ledger.

Colleen Hacker's reign as queen of the WCIC ended after a three-year run. Whitman, 7-1-2 in league play, nipped the Parklanders, 7-2-1.

PLU had an exercise in futility at the season's end. Following the October 27 WCIC finale, the Lady Lutes practiced ten days in preparation for a post-season invitational tournament before learning that the tourney had been cancelled.

Freshman midfielder Ruth Frobe emerged as the Lady Lute scoring leader. Frobe leathered 17 goals and four assists for 38 points. Sophomore forward Stacy Waterworth, slowed by an injury, had 12 goals and matching assists for 36 points.

Sophomore goalkeeper Mary Ryan posted seven shutouts while fashioning a 1.06 goal yield per game. PLU outscored the opposition 69-21.

Volleyball Season A 'Net Loss' For Young Squad

Their stock went up, but the bottom line showed a net loss.

PLU won its WCIC volleyball opener and registered a convincing victory in the season finale. In between, the Lady Lutes were on the verge of court bankruptcy.

The Parkland net set was 4-24 overall, 2-11 in district play, and 1-9 in WCIC action.

It was a rebuilding year for the young squad, which will return ten players in 1985.

PLU did have voluminous medical statistics. Fifteen Lute starters missed at least one game because of injury or illness.

In its last four victories of the fall, defensive heroics paved the way. Defensive end Jeff Elston returned an intercepted pass 16 yards on the opening play from scrimmage to trigger the Lutes to a 45-7 runaway win over Pacific.

Fumble recoveries by cornerback Mike O'Donnell and Tony Sweet set up two first quarter PLU touchdowns in the 34-14 decisions over Lewis and Clark. Sweet, defensive tackle Mike Jay, cornerback Mike Grambo, and linebacker Keith Krassin either halted Willamette scoring drives or set up PLU TDs as the Lutes muddled out a 21-8 victory. Krassin scored on a 39-yard blocked punt return.

PLU defenders put the nets on Whitworth's vaunted passing game in a 38-8 come-from-behind victory. The Bucs, NAIA District 1's most productive aerial team (236 yards per game average), were held to just 65 sky yards.

Offensively, junior fullback Mark Helm led the ground attack. Helm, with two 100-plus yard days, bulldozed for 480 yards in 81 carries, a 5.9 yard average per tote. Senior quarterback Jeff Shumake, sidelined in the sixth game of the fall (Linfield) with a shoulder separation, threw for 1033 yards. His replacement, freshman Jeff Yarnell, tossed for 779. Senior end Rich Hamlin, who missed three games, hauled in 32 passes for 403 yards.

Cornerback Mike Grambo was the tackle leader with 48 solo stops and seven assists, while brother Mark was the overall stop specialist with 46 tackles and 15 assists. Jeff Elston had nine quarterback sacks for minus 83 yards.

It was also a season of milestone and irony. On Nov. 7, 1964, PLU met Whitworth at Franklin Pierce Stadium, the first intercollegiate football game ever played in Parkland. Twenty years later — to the week — the Lutes and Pirates met again in Tacoma. To take advantage of the artificial turf, the game was shifted to Lincoln Bowl, which PLU had abandoned when Franklin Pierce was constructed.

PLU had its problems with wildcats — Linfield and Central, which finished first and third respectively in the NAIA Division II and Division I regular season national polls. The Lutes also fell to the Puget Sound Loggers.

Scores:
27 Simon Fraser 3
22 Puget Sound 32
24 Western Washington 13
14 Central Washington 31
45 Pacific 7
10 Linfield 24
34 Lewis & Clark 14
21 Willamette 8
38 Whitworth 8



Kathy Hemion

Hemion Plans End-Of-Year Resignation

Kathy Hemion, PLU women's basketball and volleyball coach since 1975, has announced her resignation effective the end of the academic school year.

Hemion, a 1974 Western Washington University graduate, compiled a 96-191 volleyball mark at PLU. Entering her tenth basketball season, Hemion's hoop coaching record is 102-138.

A member of the NAIA District 1 executive committee since 1982, Hemion served as PLU women's athletic coordinator from 1981 to 1984. She was named a 1983 Pierce County "Newsmaker of Tomorrow." Hemion was inducted into the Western Washington University Sports Hall of Fame in 1983.

Her 1980 hoop squad advanced to the AIAW national playoffs.

Hemion said that her future plans are uncertain.

"Kathy Hemion's stay at PLU parallels remarkable growth in our women's sports program," said Lute athletic director David Olson. "We are indebted to her for her faithful efforts in fostering such growth and excellence."

Men's Soccer Squad Wins Third Straight League Championship

Loosely speaking, it was President Reagan who suggested, "There you go, you've Dunn it again."

PLU, which hasn't tasted defeat in Northwest Conference soccer since 1981, did it for Dunn this fall. That's Jim Dunn, the first-year Lute mentor.

The Lutes, who have won 16 straight NWC games, captured a third consecutive league title. PLU also came within 30 seconds of unseating Simon Fraser, 1983 national champion, for the NAIA District 1 crown.

PLU, 9-4-3 and 4-0 in the NWC, battled the Clansmen for 90 regulation minutes and two ten-minute overtime periods without

Harrier Women, Men Both Earn Conference Titles

PLU harriers started the season in Parkland and ended in Parkside, putting a few long runs in their sweat sox.

The Lady Lutes captured a fourth straight WCIC cross country championship and a first-ever NAIA District 1 title before notching a fifth place finish at NAIA nationals in Kenosha, Wis.

Brad Moore's men won the NWC title, their first crown since 1975, and placed second at district. The Lutes wound up 14th at nationals, which was staged on the University of Wisconsin-Parkside campus.

In addition to the women's initial district victory, there were a couple of other firsts. It marked the first time that PLU has won companion cross country conference crowns. Junior Dave Hale became the first PLU runner to win an individual NWC title in the 23 years of competition.

Sophomore Melanie Venekamp, just the second woman in school history to cover a 5000 meter course in under 18 minutes (17:57 in finishing second at the conference chase), placed 20th at nationals to earn All-America recognition (top 25).

Senior Corrine Calvo claimed WCIC all-star honors for the fourths straight year.

Quote...

Kevin Cutting, Southern Oregon lineman, after the Raiders defeated rival Oregon Tech Oct. 27 in a game marred by a bench-clearing brawl, several ejections and an angry faceoff by the opposing coaches, observed, "They weren't the nicest guys. They weren't like Pacific Lutheran — those guys intimidate you with smiles on their faces."

reaching a decision. Four minutes into the sudden death third bonus frame, SFU scored to claim a 2-1 verdict. PLU led 1-0 until the 89:30 mark when the Clan converted a penalty kick.

Sophomore midfielder Kevin Iverson wrinkled the nets for 12 goals and added eight assists for a team-high 32 points. Goalkeeper Scott Gillette, a junior, had five shutouts and gave up just 1.33 goals per game.

10

The Alumni

Class Notes

1938

ELVA (Bergman) WILLIAMS, Pasadena, Calif., has just returned from a 20-day vacation in China. She said it was the most impressive education she has ever had.

1950

HELEN "Topy" (Ramstad) KYLLO has been appointed to the Pierce County Library Board of Trustees. Topy has worked as a teacher's aide in the Franklin Pierce School District, has been a P.T.A. president and a Campfire leader, and has been involved in the Suburban Study Club, the Orthopedic Guild, and church activities.

1963

Jeffrey Probstfield, M.D., has accepted a position with the National Institute of Health at the Heart Institute in the Clinical Trials Branch, Bethesda, Md. His specific responsibilities will be the implementation and development of a nationwide clinical trial called the Systolic Hypertension in the Elderly Program (SHEP). Jeff will assume his new position on Dec. 10. He formerly was associated

with Baylor College of Medicine, Texas Medical Center, Houston, Tex., as a trial director, Lipid Research Clinic, and was assistant professor of medicine.

1967

GARY OLSON, Forest Grove, Ore., has been named a personal financial planner for the Portland division of IDS/American Express, Inc. Before joining the Portland division, Gary was a financial planner with IDS/American Express in Wisconsin and Minnesota. Gary is married and has two sons.

Air Force Lt. Col. MERLIN SIMPSON, JR., has been decorated with the Defense Meritorious Service Medal at Hellenikon Air Base, Greece. The medal is awarded to individuals for non-combat meritorious achievement or service that is incontestably exceptional and of a magnitude that clearly places them above their peers. Merlin is a deputy commander with the 2140 Communications Group.

1968

M/M Mick KELLER (MARY KELLER) are the parents of a daughter, Annika Marie Grace, born July 29. She joins a brother, Jacob.

1970

JAMES AAGESON was awarded the

doctor of philosophy degree from Oxford University, Oxford, England this past spring. He completed his work in New Testament studies in December and was examined in February on his dissertation: "Paul's Use of Scripture: A Comparative Study of Biblical Interpretation in Early Palestinian Judaism and the New Testament With Special Reference to Romans 9-11." While at Oxford, he studied with noted Jewish scholar, Dr. Geza Vermes, and with Dr. Anthony E. Harvey, former don at The Queen's College, Oxford, and now canon at Westminster Abbey.

Jim and his wife JULIE (Taylor '70) have lived in England since 1980. They have three daughters, Erin Kristine, Anne Elizabeth, and Megan Kathleen who was born in Oxford on Feb. 3. They returned to the United States this past spring and Jim is currently serving Hope Lutheran Church in Anaconda, Mont.

M/M GARY BRANDEL (JUDY BENSON

'70) are the parents of a son, Ryan Matthew, born May 9. He joins brothers, Scott, 13 and Sean, 11. Gary is in business with family and Judy is community health nurse with Multnomah County in Portland, Ore. they live in Milwaukie.

1971

Rev. JACK D. OLIVE is pastor of Sumner United Methodist Church, Sumner, Wash., a position he assumed on Sept. 2, following a three-year associate pastorate of the Edmonds United Methodist Church. He is married and they have three children.

Dr. NANCY SCHULTZ and Dr. Richard Burger are the parents of a daughter, Emily Annika, born Apr. 14. She joins a brother, Nicholas, 5, and a sister, Heidi, 2. Both Nancy and Richard are practicing physicians in Fairbanks, Alaska; Nancy is a pediatrician and Rich is an internist.



Chapters Help Alumni Review PLU Contacts; 16 Formed In Four Years

By Janet Sheffels '57
Alumni Association
1st Vice-President

When was the last time you were able to visit PLC — oops, I mean PLU, in person? Yes, I'm already showing my era by slipping into the "PLC vintage." It's so easy to do when four very intense years of my life were spent living and loving PLC and one of the most satisfying parts of being on the Alumni Board is that I am back on campus at least three times a year, reliving some of the good ol' memories and experiencing a new love for PLU.

There was such a showing at Homecoming and how neat it was to renew acquaintances that had not been renewed for sometimes over 25 years. It was fun to learn about others and what goes on in their lives; the hurt, pain, joys and rewards. All are so important to us and to share those experiences in person helps us to become close and united.

For so many though, Homecoming is not a possibility. Because of the many miles that separate us, or the busy life style that prevents us from making the trip, your Alumni Board is reaching out to share with alumni wherever you are. We call them chapters and in the four years since we started, we have organized 16 chapters that meet about once a year for a socially fun time for alumni, students, and friends.

Since being on the Alumni Board I have been directly involved working with Chapters and it is an exciting way of renewing friendships, and also a way to meet new friends. I live in Wilbur (Yes, I can hear you — "Where's Wilbur?"). Wilbur is a small farming community about 17 miles from Coulee Dam. In looking at my PLU directory, I was amazed to find the number of alumni from this area. I wanted to meet them as it

seemed exciting to meet "PLUites" that live so close.

I started a chapter, calling it "The Big Bend Chapter," and met on a Sunday for a salmon barbecue at Keller Ferry. There were about 55 of us having a good visit: parents visiting, kids boating and water skiing. We look forward to having an annual affair.

At our smaller events we plan to have some representative function from PLU. Dr. Phil Nordquist and wife Helen attended our barbecue and Phil gave a very informal rundown of what was going on at PLU. Now we have some neat videos that can be used for this same purpose. We are becoming more flexible as we go along.

Where does your part come in? I challenge you to actively find those people in your area who have gone to PLU and invite them to a chapter gathering. Let the Alumni office know of this and they will send you all the information you'll need to get going.

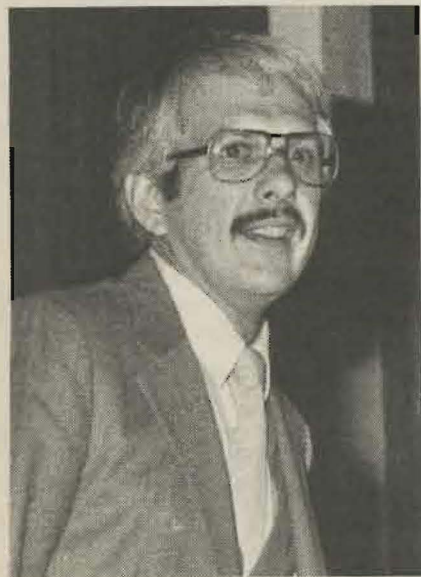
Do you have a copy of the PLU alumni directory? Look up your town and the surrounding towns and I think you'll be amazed at what you find. People, perhaps some friends of yours, who have gone to PLU. If it's just a few people you might invite them to your home for an informal PLU evening and use one of the new video tapes to keep you up to date on what's going on at our alma mater.

Yes, I'll admit that being able to serve on the Alumni Board has been a real thrill for me and I'm excited about PLU and what is going on there. Its larger and there are many new buildings and many more faculty and students, but there still remains a special kind of feeling that comes as you walk that path you once walked as a student.

I was proud to be a student at PLC and I'm equally proud to be an alumni of PLU. We have much to be proud of; let us work to make PLU proud of us.

Homecoming Highlights

Alumni Honors

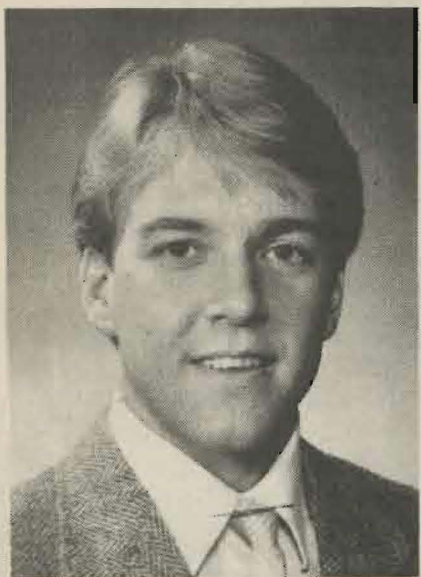


Dr. Ronald Heyer
Distinguished Alumnus



Dr. Philip Wigen
Distinguished Alumnus

Royalty



Amy Conrad of Seattle and Michael Jacobsen of Milwaukie, Ore., reigned Oct. 27 as PLU's Homecoming '84 Queen and King. Both are juniors majoring in biology. Amy is the daughter of Mr. and Mrs. Lee Ernst; Mike is the son of Rev. and Mrs. Harlow Jacobsen.



The welcome mat is out for any friends who venture north. Nancy's brother SCOTT SCHULTZ '74, is spending the current year not far from Fairbanks "out in the bush" (i.e. roughing it).

1972

JOHN BECK was ordained into the Lutheran ministry at Trinity Lutheran Church in Parkland on Oct. 28. John graduated last spring from Redburg Seminary, Dubuque, Ia. and has accepted a call to Zion Lutheran Church, Atalissa, Ia.

1973

PEDER '71 and LINDA (Edlund) KITTELSON are the parents of a daughter, Karin Rebecca, born Oct. 20. She joins brothers, Kalle and Krister. They live in Glenwood, Ill.

Rev. MURIEL (Swenson) PETERSON is the new pastor of First Lutheran Church in Ault, Colo. A 1984 graduate of Pacific Lutheran Theological seminary in Berkeley, Calif., she was ordained in October at Immanuel Lutheran Church in Greeley, Colo., where her husband RICHARD '60 is pastor.

Crary Heads New Alumni Chapter In Anchorage

Fifty people were in attendance when Pacific Lutheran University's first alumni chapter in Alaska was formalized in Anchorage Oct. 10.

There were 36 alumni attending the meeting. Jim Crary '76 was elected as the chapter's first president. Dianne Ellis '67 is the new vice-president, and Marilyn Rudolph '76 is secretary-treasurer.

Mrs. Ellis and her husband Steve hosted the event.

President and Mrs. William Rieke and administrator Al Hove represented PLU at the event, which featured signing of the chapter constitution.

Dr. Rieke described recent progress at PLU and noted that two-thirds of the new Anchorage chapter members had graduated from PLU since 1975, during his administration. Thus the chapter is one of the Alumni Association's "youngest."



From left: Dr. William Rieke, Diane Ellis, Jim Crary and Marilyn Rudolph.

Her brother, Rev. KEITH SWENSON '64, pastor at Bethany Lutheran Church in Engelwood, Colo., also participated in the ordination service.

1974

JOE ESCAMILLO is senior nuclear startup engineer for C-E Power Systems, Combustion Engineering, Inc., Palo Verde, Ariz. Joe resides in Phoenix.

JORGEN KRUSE formerly of Coos Bay, Ore. is now playing at the New Tokyo Restaurant and other clubs around Tokyo, Japan.

1975

Soprano JULIA HOLLAND, was featured in the second concert of the 1984-85 Nampa Concert Series, Boise, Id. Julia recently studied with Elisabeth Schwarzkopf in Switzerland, made her professional operatic debut with the Geneva Opera as the Shepherd Boy in Wagner's *Tannhaeuser*. She has also performed in Boise as Gilda in *Rigoletto*, and a Lucia in *Lucia Di Lammermoor*, with the Boise Opera Company. Her most recent success was in the title role of *The Daughter of the Regiment*. As a soloist, Julia has appeared with the Boise philharmonic in the 1982 performance of *The Messiah*, and she will return as a featured soloist in Orff's *Carmina Burana* next April.

REBECCA THOMPSON, Madison, Wisc., recently returned from a week-long engagement at the 1984 World's Fair where 20 members of her school performed on-stage (2 shows a day) with gymnastics and dance. She said it was a special thrill for her to return to the stage once again with choreography and actual performing. They are planning a trip to the West Coast in June and hope to perform in the Tacoma area. Three of her gymnasts are National contenders this year.

1976

MERILYN GRAM married Christopher Hardy, June 9 in Heron, Mont. Marilyn teaches third, fourth, and fifth grades at Heron Elementary School and Chris is a hydrologist for the U.S. forest Service at Cabinet Ranger Station in Trout Creek, Mont. They live on 80 acres west of Heron.

M/M DOUG ('74) STEDGE (MARY ELLEN BOSENIUS) are the parents of a daughter, Kimberly Carol, born Sept. 23. Mary Ellen teaches second grade in Puyallup and Doug works for the Highline School District in Seattle, Wash.

1977

MARGARET (Johnson) DUNCAN and husband Scott are living on Fox Island, Wash., where Margaret teaches fifth grade and Scott is a fire-fighter. They are expecting their first child in March.

M/M DAVID EMMONS (LYNNE MOEHRING) are the parents of a son, Brian Christopher, born July 10. He joins a sister, Erica, 20 months. David works in Redmond as a zone sales manager for Motorola Communications, and Lynne works full-time as a secretary at Prince of Peace Lutheran Church. The children go to work with her and a babysitter watches them in the church nursery.

M/M DAVID ('76) KERR (KATHLEEN STURGEON '77) are the parents of a daughter, Rachel Francine, born March 3. They are living in Seattle where David is a senior scientist with Oncogen, a genetic engineering firm.

M/M Ken MOSER (CAROL GREER) are the parents of a son, Derek Thomas, born Oct. 26. Carol is a full-time mother and a part-time student, working on her MBA at Seattle Pacific University. Ken is a geologist for Golder Associates in Bellevue.

Jym and RUTH (Kuck) PITINGORO, Puyallup, Wash., are the parents of a daughter, Alyssa Marie, born Feb. 13. Both Jym and Ruth teach and coach at Bethel Junior High School in Spanaway, Wash. Ruth sings in PLU's Choral Union.

1978

Army Capt. PATRICIA CORDIER has been assigned duty at Madigan Army Medical Center, Tacoma, Wash.

RACHEL MILLER and Paul Reeder were married Aug. 26 at Shalom United Church of Christ in Richland, Wash. They both are employed at Batelle Northwest in Richland.

KARLA and DAVID ('79) OLSON and children are living in Minneapolis where David is attending seminary and continuing his cabinet work in his spare time. Karla is administrative secretary to the executive assistant of the presiding bishop (Dr. Preus) of the American Lutheran church.

MARY RENNEBOHM is a full-time school counselor at a K-12 school on the east side of Maui, Hawaii. Her address is: P.O. Box 128, Hana, Hawaii, 96713 and she would like to hear from PLU alumni.

VIRGINIA SAFFELL is community editor of *The Lakewood Press*.

1979

Marty and CATHY (LYSENG '79) ANDREWS are the parents of a son, Travis Martin, born Sept. 18. Cathy is taking the year off from teaching to be home with Travis and Marty works for Pierce County Medical Bureau.

STEVE and JULIE CRANTZ '77 (JULIE ZAHN) are the parents of a daughter, Janine Elizabeth, born May 23. Julie has temporarily retired as an RN at Stanford University Hospital's coronary care unit and critical care transport to be home with Janine and Steve is a division real estate manager for the Southland Corp. in Pleasanton, Calif. They live in Milpitas.

RANDY and TARA (Otonicar) LINDBLAD, San Diego, Calif., are the parents of a son, Keane Ryan, born Sept. 17. Randy is the dental department head on the Naval Nuclear Flagship, the USS Long Beach. He is the first lieutenant in 25 years to be selected for the position. Earlier this year, he was one of two officers in the

region to be commended for his dental achievement.

DAVID ('77) and MARI (Huseth) MIS-TEREK, Olympia, Wash., are the parents of a son, Brian David, born Aug. 30. Dave is manager of corporate finance for Soloy Conversions.

ROBERT MCINTYRE received a master's of divinity degree from Pacific Lutheran Theological Seminary, Berkeley, California in June and is a chaplain intern at the University of California Health Sciences Center in San Francisco.

MAREN (Egertson) OPPELT is a vocal music teacher at Minico High School in Rupert, Id. Besides music, she teaches English and computer programming.

WADE HENRICKS received his doctor of medicine from the University of Minnesota Medical School in June.

MARK MORRIS has moved to Longview, Wash., and is photo editor for the *Daily News*, after 5½ years as a photographer and graphics editor for Valley Newspapers in Kent, Wash.

GLENN HALL, Jr. is splitting his musical time these days between Tri City Elementary and Canyonville Elementary Schools in the South Douglas County School District, Myrtle Creek, Ore. He and his wife Candace live in Tri City with their year-old son, Glenn. Another child is on the way.

DAVID LEVINE is enrolled at Michigan State University College of Osteopathic Medicine, East Lansing, Mich.

MARK and ROBIN (Benner) MAAS, Lynnwood, Wash., are the parents of a daughter, Whitney Nicole, born Sept. 27. Mark is a mechanical engineer for Washington Natural Gas in Seattle, and Robin was teaching at Bellevue Montessori School before Whitney was born.

BALDWIN MINTON has passed the Washington State Bar exam and is employed in the Gerald Miller Law offices in Vancouver, Wash.

M/M David Xander (DENISE STUCKEY) are the parents of a son, Jeremy Charles, born Oct. 18. Denise works as a community health nurse and David is an instructor for the University of Illinois. They reside in Champaign, Ill.

1982

KELLY ALLEN is public relations assistant for Long Wharf Theatre in New Haven, Conn. The Long Wharf is one of the top regional theatres in the country and sends an average of one production per season to Broadway. From March to October Kelly worked as public relations assistant for Intiman Theatre Company, a professional theatre company in Seattle, Wash.

NAOMI KRIPPAEHNE, assistant in development at PLU for the past two and a half years, has accepted a position as director of development for the Tripple L Ranch in Center, Colo. She began her new duties on Nov. 15. Her position will involve considerable traveling from California to New York. She will set up the entire development program for Tripple L as they have not had such a program in the past.

Airman 1st Class STEVEN SHEARER graduated from the U.S. Air Force electronic communications and cryptographic equipment systems repairman course at Lackland Air Force Base, Tex. Steve is scheduled to serve with the 2113th Information Systems Squadron at San Vito dei Normanni Air Station, Italy.

ANN WATTS married Tim Bogard in April and they are making their first home in Dallas, Tex. Ann is a sales representative for an electronics firm.

'Lost' Alumni

The PLU Alumni Association is making preparations for publication of a 1985 Alumni Directory. To make the directory as complete and useful as possible, information is being sought on alumni whose current whereabouts are unknown.

You can assist us by checking the list for names of friends with whom you are in touch. Please send current information on the printed form or a facsimile to Nesvig Alumni Center, PLU, Tacoma, WA 98447.

Your assistance is most appreciated! A list of '70s and '80s 'Lost Alums' will be published in Scene in March.

1916

CORBIN, IRENE B. (FADNESS)

1917

BRYNESTAD, CARL H.
HORN, ALBERT R.
JOHNSON, ERLING O.
SUOMELA, WAYNE

1918

GARSTAD, A.H. (KITTELSEN)
NILSEN, O.C.
REASONER, EMMA (ELLINGSON)

1920

HARSTAD, EMELIA (GILBERTSON)

1921

GUAM, EMMELINE
ROE, OLGA
RYNNING, SOLVEIG K.
SORENSEN, JULIA P. (JOHNSON)
STARKS, GOLDIE

1922

BOE, BARBARA
JENSEN, MURL
KNUTZEN, HAROLD
SAMUELSON, ALFRED
THOMPSON, ALBERT

1923

BOETTCHER, NITA
CRONQUIST, OSCAR
EIK, AMELIA
JACOBSON, RICHARD
LEE, ALYCE

1924

ANDERSON, ALFRED
ANDERSON, KATHERINE
FENSON, INGA
EBBESON, OSVALD
GREENWOOD, GEORGE
KNUTZEN, HALFH
OLESON, HOPPE (CAFEESE)

1925

ANGVIK, ECTHER
CARLSON, LYMAN
HANSON, ERNA (HEINDAHL)
O'FARRELL, EDNA
RIVENESS, RUTH

1926

BRUDVIG, ARTHUR
DAHL, ANNELLE
DAHL, IVER C.
KRAGNES, BERT
SANDWICK, OLIVE

1927

EROTINDV, EDNA C.
FITTS, CORDOTHY (COWLER)
FLOTT, PETER J.
GARDLIN, MARIE
HAGEN, LEOLE
NOBLE, ALICE (DALLIE)
OLSON, CLIFFORD F.
OLSON, CARVIX
ROBERTS, ARLEDA (ALLAN)
WISSE, JOHN

1928

PARKMEYER, JOYCE
ROFESON, AGNES
RUTTORF, BEPAICE
COWAN, JEANNE
FREDRICKSON, MAE
KILIER, PETSY J. (FOSTER)
LEONARDO, ANNE M. (LELAND)
LUND, LENORA
ORDAL, H. GLADYS (JORGENSEN)
ORDAL, OLAF G.L.
PARKS, MABEL (SWANSON)
RALL, BLANCHE M.
STUEN, JOHN
WYNSTRA, MARGARET
ZIMMERMAN, DOROTHY

1929

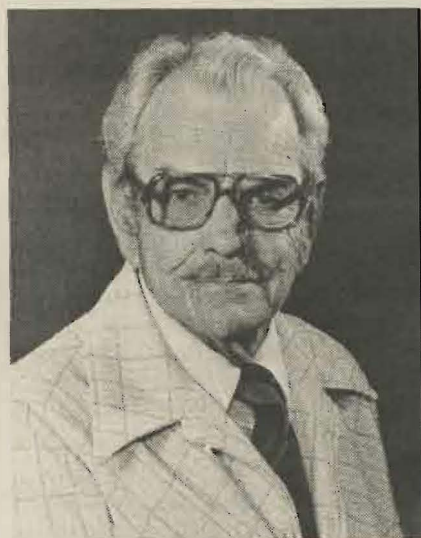
ANDERSON, ETHEL E. (JOHNSON)
ANDERSON, LILLIAN E.
GRAMB, MILTON C.
GRATZER, DOROTHY G. (LEHMANN)
HARVEY, OPAL B.
KNUTZEN, ROBERT J.
LACY, M. FRANKLIN
MC MANUS, PHYLLIS S. (GRANDE)
SYDOW, GERTRUDE
WOHLMACHER, MAE E.

1930

ERICKSON, MAREL A. (JOHNSON)
GOULD, KATHARINE
HOLM-JENSEN, PAUL H.
LISHERNESS, JOHN W.
MC GOVERN, MARGRUE L.
MOHN, CORNELIA B.
PAULSON, DOROTHY (BODLEY)
SIZER, MARTHA E.
STEGEN, ANNA B. (AAMODT)
STORLIE, PALMER C.
WARREN, FLORENCE L.

1931

AUSTIN, EDEL
AYERS, ANNA J.
BURKE, MARY E.
JOHNSON, STELLA B.
KERR, WALLIS
LEWIS, R. MARIAN (WENSEN)
OMDAL, I. MARIE
PERCIVAL, L. EARL
RASMUSSEN, THORA P.
ROE, ALICE L.
SOINE, MURIEL I.
SORFOE, STELLA M.
SWENLAND, GLADYS
TAGG, ELEANOR B. (LOFTHUS)
VERNON, JOHN P.



In Memoriam

Theodore O. H. Karl, one of Pacific Lutheran University's most well-known professors for over 30 years, died Oct. 23, four days short of his 72nd birthday.

Karl, who earned bachelor's and master's degrees at Gustavus Adolphus College in St. Peter, Minn., in 1934 and 1936, originally served on the Pacific Lutheran faculty from 1940-42. After world War II he returned in 1948 as chairman of the Department of Speech (later Communication Arts).

According to PLU President William O. Rieke, who was one of Karl's prize pupils in the early '50s, the professor "put PLU on the map in terms of regional and national forensics competition." Always active in Pi Kappa Delta, the national forensics honorary fraternity, he headed the national organization from 1967-69 and 1976-80.

Many referred to Karl as the "voice of PLU," since he served as master of ceremonies, parliamentarian and grand marshal at countless PLU events. He served as faculty athletic representative for 18 years and was chairman or

1932

BAILEY, OSTA R.
BAY, OLENA (WAGRO)
BURBANK, KATHRYN F. (PATTEN)
CAMPBELL, SMITH BAKER
COVERT, RAYMOND E.
HOWARD, RUTH E.
JOHNSON, HILDUR E.
KIESECKER, LOUISE A. (SCHNEIDER)
MIYAZAKI, TADASHI
OEN, BERTRAM M.
OLSON, KATHARINE M.
REDEEN, JOHN F.
SANDERSON, LYAL H.
SITTS, DOROTHY M.
SWENSON, GEORGE E.
THRANE, HELEN M.
TRULSON, HAROLD

1933

GILBERT, ELLEN L. (SOLEY)
HUDSON, JOHN C.
JACOBSON, CARROLL
MESFORD, CLIFFORD D.
ROBERTS, CLARABELLE
ROBINSON, NEDRA (CUEIGK)
ROE, DALORES E.
ROEN, CLARENCE W.
SMITH, WILLIS R.
SPENCER, CHARLOTTE
USTAD, WALTER A.
WHALEN, WILLIAM H.

1934

ANDERSON, OSCAR F.
JANSSEN, GEORGE L.
KRAETCH, LLOYD W.
MIYAZAKI, TAKAI
WILLARD, FRANK E.

member of nearly all faculty committees. He retired from PLU in 1978.

In the community he served on the board of Tacoma Little Theatre, the Lakewood Players, Allied Arts, the Tacoma Opera Society and was a member of St. Johns Lutheran Church, the Fine Arts Club and Rotary Clubs of Parkland and Lakewood.

He produced Summer Opera in Tacoma, hosted by PLU, during the summers of 1982 and 1983, and organized theatre productions at the Oakbrook Golf and Country Club. Most recently he was chairman of Nordic Night, a benefit for the planned PLU Scandinavian Cultural Center, hosted at the Tacoma Sheraton Hotel in June by the PLU Scandinavian Cultural Council.

He is survived by his wife, Elizabeth.

ROBERT E. DAHLBERG '50, passed away Feb. 8.

RICHARD A. DANIELS '52 passed away Oct. 15. He was a principal at Milton Elementary School for six years and at Star Lake Elementary School in Federal Way for eight years. He was also a football and wrestling coach at Fife High School for several years.

Richard is survived by his wife, Gwen; three sons, Matthew of Puyallup, Charles A. and Todd A. both of Fife; his daughter, Mrs. Jonna Johnson of Walla Walla; his brother, Alen O. of Tacoma; and four grandchildren.

RUBY R. WATNESS '49 passed away Sept. 19 at the age of 82. Born in Norway, Ia., she was married to Johannes Watness for 58 years before his death last February. The first grandmother to earn a PLU degree, she taught in the Mukilteo (Wash.) School District for 17 years and was organist at Our Savior's Lutheran Church in Everett. Sons Luther '49 of Mountain Home, Id., and Calvin '50 of Tacoma also graduated from PLU, as did grandchildren Kathy (Watness '71) Bellefleur and David Watness '82. Granddaughter Andrea is a current student.

1935

ASPER, ORLANDO C.
BARNUM, ALICE L.
BRIGHAM, VIRGINIA A. (BOEN)
ELLIS, MARGARET C. (LIEN)
HARRIS, VIRGINIA LOU
HASEGAWA, SHOIN
HUNTER, LEWIS G.
HVIDDING, KAREN P.
JOHNSON, ANNE
JOHNSON, PANSY (COLLIER)
JONES, MARIAN E. (PETERSON)
MAHACKE, VIRGINIA L.
MORROW, ALICE R. (INLAN)
NASH, ALDA FAIRLEE
NYBACKE, VIGLA (LARSEN)
OEHLEIGH, WINIFFE (PUTSCH)
PADDGCK, LILA M. (RILEY)
PEDERSEN, MARIE C.
ROSS, VIOLA FRANCES (NEWTON)
SCHROEDER, CLARA M. (KUNHAUSEN)

1936

CARPENTER, ELEANOR M. (FAUCEEAUGH)
DODGE, MARY C.
FENANDER, JEAN MARIE (FOLETT)
HUTCHISON, RALPH E.
LARSON, GUNHILD A.
LUNDE, AGNES M.
MC CORMICK, HARRY L.
SWANSON, SENA M.
TERRY, BETTY

Name _____ Class _____
(Maiden Name) _____
Address _____
City _____ State _____ Zip _____

1937

FOLSOM, WILLYS
 GUERDE, B. JOSEPHINE
 GROVE, OPAL
 HAUGEN, CLIFFORD A.
 HOPKINS, JESSE
 KLINE, GEORGE D.
 LARSEN, MILDRED L.
 LININGTON, G. PAULINE (WATTS)
 MEYER, JESSIE M.
 MILLER, EDITH H.
 NIEMI, FERNICE J. (THOMPSON)
 PAULSEN, ALDA A. (JOHANSON)
 RUSTAD, GEORGE F.
 SMITH, DORIS E. (CLESON)
 SMITH, EARL M.
 TIMOTHY, WAGENE (CALAVAN)
 XAVIER, PAUL

1938

ALLEN, BARBARA E.
 ARNESEN, WOODROW V.
 BUNESS, VIVIAN E.
 CAPPS, WILLIAM C.
 ERICKSON, JOHN C.
 JOHNSTON, JULIA V.
 JONES, COFINNE (MALMIN)
 KRISTENSEN, ELSE M.
 MORRIS, IVA M.
 OWEN, ERVIN L.
 PATTON, JANICE M. (BRONES)
 SANDERS, DOROTHY M. (KNIFFEN)
 WARNER, MONA E. (PYPD)

1939

ALEXANDER, GEORGE
 DEMERS, JOSEPHINE A.
 FORSTER, BETTE-JC
 LARSEN, SIGNE (MIDTSATER)
 LARSEN, THOR W.
 LERVICK, BAARD
 MILLER, ZILLA F.
 MOORE, RUBY
 OMDAHL, NORMA J. (LANDO)
 PETERSON, ALVIN H.
 PETERSON, RICHARD M.
 SLOGDOVSKY, GEORGE A.
 SMITH, DOROTHY B. (PETERSEN)
 SMITH, LOIS F.
 SUTTER, FRED J.
 TAYLOR, ARLENE G.
 VICKERY, BETTY (FRASDELL)

1940

BENNETT, RICHARD J.
 DENN, JOSEPH A.
 HURLBURT, ROBERT N.
 KERSTEN, WALTER C.
 LEASK, CLAIRE R.
 MAKI, JAMES A.
 PRICE, ESTELLE M. (PELLERVO)
 STEBBINS, MILDRED C. (MALMIN)
 UNGER, FRANK
 VAN SLYKE, HARMON L.
 WALL, JOHN B.

1941

ALTON, NELLIE M.
 ANDERSON, VERA L.
 BASS, MARY ANN (LEQUE)
 BOGGS, EVELYN (STALWICK)
 BRINCKEN, PAUL A.
 BROWN, BETTY N. (WINTER)
 DORMAN, NORMA JEANNE (JUOD)
 JACOBSON, MARGO M.
 JOHNSON, CALVIN W.
 JOHNSON, IVER C.
 JUNGCK, LAWRENCE H.
 MAING, VIRGINIA L. (SCHREUDERS)
 MILLER, FRED S.
 NELSON, HORTENSE (MACKIE)
 OLIVER, JANE E. (HIFIS)
 RUPLEY, DORINE (LA SEAU)
 TORVE, ROBERT M.

1942

CORBETT, D. JEANNE
 HAUGEN, ESTHER A. (SIVERTSON)
 JOHNSON, K. WALTER
 JOHNSON, PATRICIA (POTTER)
 LEASK, BEFNICE C.
 LUDEMAN, MARJORIE M. (KASE)
 MC CURDY, FLOY C. (PEARSON)
 MC KAMEY, MELFIEL J.
 NEWELL, RUTH (PFLITT)
 OSMAN, VIRGINIA I. (FENDRICKSON)
 PARENT, HELGA M.
 PUGH, PATRICIA (WINNEY)
 RICHARDSON, LOIS (MCFRIS)
 SLOAN, DONALD R.
 SWANSON, ELLEN M.
 WALTER, JUNE J.

1943

ANDERSON, BETTY JUNE
 ARNESS, PEGGE M.
 PECKER, MINNIE FLICE
 DE BAUN, JEWEL P.
 EDWARDS, ARTHUR B.
 FRYE, RUSSELL A.
 HUGHES, MARJORIE E. (WENTWORTH)
 KING, MILDRED I.

LANGTON, GERTRUDE E.
 PETERSON, DOROTHY E.
 RUST, UPSCALA M. (MC DONALD)
 SALDIVAR, DEE (KACPS)
 THOMPSON, ERLINE F.

1944

FRIVOLD, FORSHILD O.
 GAUL, JOHN M.
 HANSEN, HENRY I.
 HEINRICH, MARY M. (PETERSEN)
 LUDWIG, LOIS K.
 MILLER, EVELYN F. (BERGFORD)
 MORRIS, LOIS K.
 NYLAND, LYLE
 PETERSEN, WILLIAM C.
 REITZ, HAROLD M.
 SNELSON, CATHERINE A. (MORROW)
 SPRAGUE, DELBERT
 WAGNER, MARIAN C. (CROWELL)
 WESTERDALE, CAROLE M.
 YAMADA, SEIICHI

1945

ARLTON, STANLEY L.
 BLIED, PAUL G.
 BRINKEN, PAUL A.
 CRAIG, VIOLA M.
 ERICKSON, FERN
 JOHNSON, WILMA C.
 JOHNSTON, BETH EILEEN
 MILLS, MARY J. (CAIN)
 MYHRE, BERTRUM O.
 PERRY, BERT
 RAMSEY, VERA L. (TEGLAND)
 RENKEN, LORRAINE (JOHNSON)
 SCOTT, MAXINE R. (STRANDWOLD)
 STERBA, WALTER
 STOLZ, VIVIAN C. (PEARSON)

1946

HANSEN, ELLEN E. (TORVEND)
 HAWKINS, CLIFFORD E.
 JAEGER, AGNES E.
 JORDAN, MABEL L.
 KUHN, ALBERT F.
 MARKER, FRANCELLE (SCHUCH)
 MAU, THILDA A. (HELLMAN)
 SNELSON, CHARLES
 SOLOMON, SADIE A.

1947

COX, DONALD S.
 GRAY, FERN ANITA (NCPMAN)
 IUFER, THEODORE A.
 JAMESON, ALFRED G.
 VALENTINE JR., EDWIN

1948

AUSE, KNUT
 CARLSON, HAROLD S.
 CUSHMAN, MARGARET H. (KABLE)
 HELDRIDGE, MAXINE (FUSINKO)
 HURLBURT, LOIS (PORTER)
 KLINE, BARBARA A.
 KREICK, F. DONALD
 MITCHELL, JACKLYN C. (SLATER)
 PETERSON, MARGARET JEAN (TAYLOR)
 ULRICH, PAUL
 YORK, VIOLET (HOLEY)
 ZELLMER, GERHART

1949

HURNS, DANIEL J.
 BUTLER, MARTHA E.
 DONLON, INEZ C. (HANSON)
 HJELSETH, ESTHER (ORFALL)
 LEROY, MARION (KALTON)
 RASBERRY, JAMES A.
 RUNYAN, MABEL L.
 STEVENS, EDWARD E.
 STEWART, ALICE F.
 TOLLFELDT, LOUISE M.
 TURMAN, JAMES A.
 WALKER, HATTIE
 WALTERS, TRACE I.

1950

ALBERTSON, ARNE
 ANDERSON, MARVEL (NEPHEIM)
 ARPS, ROBERT B.
 POWMAN, MARJORIE (PAUL)
 CRAIG, ALEXIMA
 CUMMINGS, RUTH (CCHFC)
 DONALDSON, RUBY (HAFER)
 ERICKSON, ALFRED
 FISHER, EDWARD S.
 FLATNESS, EDWARD
 GREGORY, BEFNICE E.
 HANSEN, ELEANOR (HAFER)
 HEINTZ, DORFITT M.
 HOLM, CURTIS M.
 IUFER, ROBERT G.
 JORGAN, DELLA (MAREFALL)
 KLETT, HAROLD S.
 KNAACK, FREDERICK F.
 KOHLER, SYLVIA (VARVESEN)
 LONG, MARY J. (EVEN)
 LOSETH, VERA (FIFE)
 MILLER, LOIS (PFOCHNCK)

MUNSEN, CARL E.
 MUSTO JR., CHARLES H.
 NIELSEN, IVAN E.
 NYGAARD, PHYLLIS
 OVERLAND, LEFGY T.
 PITNER, DALE
 FEESE, RUBY E. S. (LYNNE)
 RUMMER, ROBERT L.
 SILER, HAZEL
 SIPE, ELIZABETH M.
 SMITH, ELLEN E.
 TUTTLE, ROBERT V.
 VENNEBERG, BONITA MAE
 WAGNER, HAROLD E.
 WAHLSTROM, JOY E. (SMITH)
 WHITWORTH, PAULINE (MC DONALD)
 YOUNG, GERTRUDE H. (DYKSTRA)
 ZIER, MERLIN WM.

1951

ANDERSON, GILBERT W.
 BUCHHOLZ, RONALD M.
 CLEVINGER, DORIS E. (STANSBURY)
 CORCORAN, RINA (HJORT)
 ERICKSON, HENRY L.
 FALLSTROM, HAROLD E.
 HARVEY, DORIS E.
 HARVEY, LOYD R.
 IUFER, JOY (THONNEY)
 JUSTICE, JACK
 KENWORTHY, ELWOOD
 KNAPP, RICHARD F.
 LARSON, O. WILLIAM
 LIVINGSTON, EILEEN (MC LAREN)
 LIVINGSTON, NEIL R.
 MADSEN, LOUISE M. (EUNESS)
 MOLTEN, RICHARD F.
 MORRIS JR., BURTON W.
 PAULSON, HELMER A.
 PETERSON, WILLIAM E.
 REID, GORDON J.
 RICHARDSON, RUBY
 ROONEY, JOHN S.
 SAKSHAUG, VIRGINIA L.
 SCHROCK, FLOYD M.
 SEAMAN, VIRGINIA (LEWIS)
 SHAW, DORIS JEAN
 SMALL, KATHARINE (MORTON)
 SZABO, JOHN J.
 TURMAN, JEANNETTE (LEWIS)
 UTIGARD, LAWRENCE
 VAN ARMAN, VELLA T.
 VAN MEER, MALCOLM
 WAKEFIELD, GLORIA (WILDMOE)
 WARD, LUVERNE
 WHITE, GLORIA (LAPSEN)

1952

ANDREWS, GERTRUDE
 BAUMGARDNER, RUSSELL
 BELLAND, ROBERT H.
 BERG, RICHARD M.
 BOGGS, ESTHER M.
 BOMBARDIER, MARCEITE (DEMERS)
 CALLENDER, MARILYN S. (FIDLES)
 FRITZ, JEANE M.
 HENDRICKSON, EUGENE C.
 HOLTHUSEN, PATRICIA A.
 HUELLER, CAROL F. (LETTO)
 KLETT, MARIANNE C. (STACY)
 KOHLER, ADOLPH H.
 LAPOFF, MILTON
 MAY, BELLA J.
 MC LAUGHLIN, WILLIS S.
 NELSON, ROBERT D.
 OTTINGER, MERRIE J.
 POTTER, LUCY A. (TIFFIE)
 PROUD, JACK
 RAINES, ESTHER (ECLAND)
 STEEN, LUTHER E.
 STODDARD, ALAN L.
 SUDER, WALTER J.
 TETERUD, LOIS M.
 THOMPSON, SHIFLEY
 URNESS, NYER W.
 WILLIAMSON, JAMES E.
 WIMER, LOUIS G.

1953

ANDERSON, CAROLYN (FEINERSON)
 BROWNSON, VERA
 CHARNELL, SHIRLEY LEE (ROBERTS)
 COFFEY, BEATRICE L. (KONDF)
 COURTNEY, LILLIAN (LEINBAUF)
 EASTMAN, LLOYD E.
 EASTVOLD, ELVA
 GERLA, FRIDA T.
 HANSON, NORMA (ANDERSON)
 JENKINSON, MARILYN RUTH (SCHWERIN)
 JOHNSON, ROBERT E.
 KANCAL, DAVID L.
 KELLISON, MARILYN (JARE)
 KENAGY, CAROL JEAN (HANSEN)
 HARKLEY, JOAN (CHERPUT)
 MILLER, LOIS (DIGN)
 NEVE, ELEANOR LOIS (HANSEN)
 ORLANDO, ROBERT J.
 PHILLIPS, MARGARETHE S.
 ROLANDELLI, MARJORIE J. (HILL)
 SIMMONS, ELSIE A. (FRIPPIC)
 STRAY, ANNE E.
 WILLIAMSON, JACQUELINE (NELSON)

1954

BADTEN, JEAN (RONKEN)
 BAUMAN, BARBARA (HEGLUND)
 BETTIS, OPAL L.

CEASE, ELSIE C.
 COOK, HELEN (LIEN)
 DAUGS, EDWARD H.
 FLUKE, COLLEEN (UMRE)
 GUDBRANDSEN, CATO O.
 HASH, WILLIAM L.
 JEFFERS, DALE A.
 KELLER, GLORIA E. (EVANSON)
 KJESBU, ARNOLD
 KJESBU, MARIE (KREPM)
 MC LEAN, TERRY K.
 NYBERG, MERVIN G.
 PETERSON, LAWRENCE H.
 POWERS, HELEN B.
 ROMOREN, THELMA (FOWLER)
 RYDGREN, JOHN V.
 SIQUELAND, EINAR FOLF
 SUNDAM, MELVIN A.
 WILEY, BENJAMIN H.
 WILKINS, MELVIN J.
 ZVILJUS, JULIA (BENDIKAS)

1955

BOWMAN, ARTHUR E.
 CAIN, MARVIN
 DAVISON, LILLIAN M. (PIETALA)
 FREDRICKSEN, ETHEL P. (WEEKS)
 FRENCH, ELLIS R.
 HILLIARD, MOZELLE (MANAHAN)
 HOLM, MARION D. (GABRIELSEN)
 INGALLS, BERTHA L.
 JENSEN, AVIS E.
 JUSTICE, JUNE (BUNNEY)
 KENDALL, JUNE (HUMPHREY)
 KENNEDY, REGINA
 KNUTZEN, LEIF A.
 KOHL, SHIRLEY A. (LEWIS)
 LUVAAAS, PETER J.
 POORE, J.P.
 ROBINSON JR., WILLIAM
 RUTHERFORD, JOAN N.
 TURIK, HARRIET S. (VORVICK)
 UNDSETH, OLAF K.
 YOUNG, MARGORIE (WILLIAMS)
 YOUNG, MILDRED A. K.

1956

ANDREAS, JANET (LEONARD)
 BARKWELL, RICHARD
 CAUGS, FERNICE E. (FIDJELL)
 DUNN, MURIEL M. (MC ALLISTER)
 FREEMAN, SHIRLEY F.
 HURST, DEAN W.
 HURST, LORRAINE J. (CLESON)
 JACOBSON, STAN A.
 MORRIS, THOMAS F.
 OSBURN, ANITA (CLSEP)
 PIERCE, CASSIE E.
 RIPPY, MARY F.
 ROWE, LORRAINE C.
 STOUT, JOAN (BEARD)
 YURKANIN, CAROL F. (DEGAARD)

1957

ANDERSON, BEVERLY J. (SVENINGSEN)
 BERGH, ROXIE K.
 CASTLE, LOWELL H.
 DAN, LEPOY G.
 DARVILLE, PATRICIA A.
 DEJARDINE, RICHARD C.
 OYE, LOIS C. (FORRELL)
 EDWARDS, JACQUELINE A. (COLLELL)
 ENGSTROM-HEG, ROBERT
 FINES, ROXIE (KLOCK)
 GUSTAFSON, SARAH L.
 HERPEZ, FRED
 MILLIS, MAURICE G.
 MULTENGREN, ELSIE M.
 KAATROD, PAUL G.
 KAYAIAN, JIRAYR C.
 KELLY, OLIVETTE (FENDRICKSON)
 LARSON, JEROME L.
 MALTBY, ROY A.
 MC COY, EDNA I. (PELSEY)
 MC LEAN, DELPA DEE (ROLOFF)
 MONTEWAYER, RUTH E. (SPOW)
 MOORES, JEANNE R. M.
 MORRELL, HILDA M.
 PAUL, JERINE M. (LARSON)
 POINTER, CLAIRE A.
 RASMUSSEN, DARRELL
 REUTER, DENNIS W.
 RODIN, KATHY (JOHANSON)
 RORVIG, RICHARD A.
 SCOTT, ELOISE (FRIPPIC)
 VEPTREES, HELEN (DECFANT)

1958

BASEHORE, DORIS L.
 BJORNSEN, MERLE D.
 BONDURANT, THEODORE M.
 BRADY, NANCY E.
 CAMPBELL, THOMAS C.
 CHAMBERS, PATRICIA K.
 CHRISTENSON, JANICE (BONDURANT)
 COLE, MARTHA (GRAY)
 CUDAHY, ALLEN L.
 DANIELSON, ELMER E.
 ELLIOTT, ROY
 HARROD, VIOLA B.
 HINRICHSEN, LOWELL
 KARLINSEY, EDNA
 KAST, DONALD R.
 KILMER, BETSY JANE
 KLEIN, BETH H. (TURFEN)
 KNUDSEN, KARL R.

14

The Alumni

LANCASTER, FRANK H.
 LYNN, LINDA J. (MC GEORGE)
 MACKAY, ARLENE (BAKER)
 MAGNUSON, IVA P.
 MAY, DONALD L.
 MC CULLOUGH, NORMAN A.
 MC KENNEY, RUTH E. (HAUGSE)
 MIKULECKY, ROGER L.
 MIKULECKY, WANDA (VANCE)
 MORGAN, MARILYN S. (SMITH)
 MORSE, BEVERLY J. (SEVERID)
 NELSON, JOANNE (KNUTSON)
 NELSON, THOMAS ALLEN
 NILSEN, JOHN A.
 ROBERTS, MARILYN L. (STOLZENBURG)
 ROHE, DONALD L.
 ROSS, LAWRENCE T.
 RUTHERFORD, GEORGE C.
 SANDERS, DAPHNE J. (KENEALY)
 SCARCE, FRANCES (TYLER)
 SOUCIE, JOANN (JACKSON)
 SUMMERS, JOHN
 SYLLING, ALVIN F.
 SYLLING, SUZANNE F. (GPA55)
 THELMAN, BETTY J. (KRUG)
 UECKE, FLORA (DAVIDSON)
 WALTHER, PATRICIA G. (ROTHKCK)

1959

ANDERSON JR., AAGE B.
 ANDERSON, CAROLYN LEE (KRUG)
 BACON, FLORENCE M.
 FEASLEY, WALLACE W.
 BLOCK, JENNIE E.
 BROWN, GERALDINE (FINSTUEN)
 PUMGARDNER, JOYCE C. (NORLIN)
 CLIFTON, RICHARD J.
 DAHLE, ARLENE
 GILBERTSON, FREDERICK J.
 GLASER, JAMES
 GOETTSCH, JOHN A.
 HANSEN, DELEERT A.
 HARLSON, CAROLYN (FALLA)
 HAYDON, MARIANNE (MCOSTORY)
 HILLIARD, KENNETH G.
 JOHNSON, JOANN D.
 JOHNSON, WAYNE S.
 KALLIE, GLOFIA
 KARLSTAD, VIRGINIA A.
 KJELSTAD, VELMA
 KLEIMENHAGEN, ALV E.
 KOLLOEN, JANICE J. (SCHEUERMAN)
 LARSON, PHYLLIS L.
 MARTINSON, MERLE C.
 MOE, MARY M.
 MORTENSON, ROBERT W.
 MYKLEBUST, CHARLES T.
 NELSON, KENNETH
 NELSON, WILLIAM E.
 OLSON, ROBERT E.
 PEASE, MYRTLE
 PEDERSEN, FRANCES
 POLZIN, JUDY
 POPE, KAY E. (HCLP)
 ROBINSON, GAYLE (FENRICHSEN)
 ROCKWOOD, EDWARD E.
 ROHE, NANCY L. (RICHARDSON)
 SANDERS, JANET L. (KRIGHT)
 SANDHOLM, JAMES
 SCHNEIDER, ELSIE (PFLOGER)
 SOULES, MARY ELLEN (KING)
 STAPLES, DIANE (KOLNESS)
 TEJGEN, DONALD EUGENE
 TRIPP, KAREN LEE (KORHONEN)
 WALSH, JUANITA (KLAFF)
 WHEATLEY, ROBERT E.
 WULF, LYNN (CITLP)

1960

ALEXANDER, RENALE
 ALMGPEN, KATHLEEN M.
 ANDERSON, JEANETTE L. (PICH)
 BAILES, DONALD S.
 BARRREITER, FRANK
 BEATTIE, NANCY A. (FANT)
 BJORNSEN, NANCY (ENGLISH)
 BOONE, MAUREEN E. (LANNEN)
 BOS, RAYMOND R.
 BRAATEN, RAYMOND W.
 BULLIS, MARY (KLEV)
 BURCHAM, EARLENE
 BURNETT, JO ANNE (FULLER)
 CHRISTOPHERSEN, HARVEY L.
 CHUVALA JR., BEVERLY KAY (KCFP)
 CLIFTON, ANN MARIE (JOHNSON)
 DAGGETT, STEPHEN
 DOYLE, OLGA (WILLIAMS)
 FAUBION, ROSEMARY
 GREEN, GEORGE A.
 GREER, JANE
 GRESS, DELORES (NIM)
 HANSEN, DONNA BETH (HICKMAN)
 HAUSER, IONE A. (KOBNE)
 HIERIGSTAD, CLARA ROSE
 HILDEBRAND, JUDITH G.
 HOLLADAY III, WILLIAM N.
 HULL, A. RUTH (KRIEAMT)
 HUMMEL, MYRNA B. (HALL)
 JOHNSON JR., MARLYS KAY (CLARK)
 KAPELIS, JOANN (DOHER)
 KELLY, DARLENE A.
 KEYSER, MARY (SARFUTERS)
 KOEBEL, CHARLOTTE R. (KLOKKER)
 LANING, MARILYN LEE (ANDERSON)
 LEGG, CAROL F. (MALECN)
 LEWISON, GORDON W.
 MANZO, CLAUDETTE M.
 NOSTE, OLIVER C.
 OPMAN, LARS A.
 ORR, THERESA
 OSTROOD, ALFRED F.
 PIKE, GEORGE F.
 RASMUSSEN, PHILLIP A.

RATKO, PETH R.
 REECE, JOYCE A.
 REHN, RICHARD H.
 REIMANN, BEA E.
 ROESCH, ELLA M.
 ROSS, DENNIS
 ROSTOCK, JOYCE (SCHROEDER)
 SAVAGE, VIRGIL F.
 SIQUELAND, PAUL A.
 SISSON, ELBERT C.
 SMITH, ELVA M.
 SPANDE, V. AGRINA
 TRAYNDF, JANIS T.
 WALL, KATHRYN ANN (MURPHY)
 WHITVER, ANNE (CYFLO)
 WILLIAMS, WM. RICHARD
 WRIGHT, DELLA V. (SCHEIDT)
 ZEHM, ROSALIE A.

1961

ANDERSON, NANCY LEE (GUNDERSON)
 BAKKE, JEROME W.
 BETTS, ANDREY D.
 BETZEMER, ANN MARIE A.
 BIGGS, COLLEEN (ESTERSON)
 BIGHAM, DIANE (PEFF)
 POWERS, LESLIE R.
 HUFFINGTON, PATRICIA K. (HERG)
 HUMPHREYS, DELORES A. (KENSLEY)
 CASSIDY, JACK D.
 DUNLAP, MARY F.
 FENNER, RONALD F.
 FERGUSON, ELEANOR E.
 FLEMING, VIRGINIA (EVERETT)
 GAAL, KENNETH J.
 GAHLHOFF, PETER E.
 GARRARD, GRACE F.
 GIBBS, FERTHA M.
 GRESS, GEORGEY A.
 GROUNDS, PAULINE E. (MATTHEWS)
 HAGERUP-LARSEN, LARS
 HOGES, SANDRA J. (SCHNEIDER)
 HU, CECELIA
 HUSKINSON, CAROL E.
 JACOBSON, JUDI G. (JOHNSON)
 JOHNSON, JOHN ROGER
 JONES, LENICE J. (KORHONEN)
 KANE, ALTH A.
 KAPLIN, JOAN C. (PEFF)
 KEITH, DARRELL L.
 KIRTLEY, JOHN F.
 KITTELSON, HAROLD
 LEMKE, JANYCE (KANSER)
 LESTER, RONALD W.
 LUTON, SYLVIA J. (SHILLY)
 MC CALL, KATHLEEN
 MEN-MUIF, ALICE (HEA)
 MORRISON, DEAN
 OLSON, SANDRA MARIE
 OTTUM, ERIC W.
 PAPPITZ, C. DIANE (FENHAM)
 PETERSON, LAWRENCE LYNN
 RAMSTAD, LOIS E. (HUBNER)
 RAMSTAD, PHILIP S.
 REAMS, JOHN F.
 REETZ, HAZEL
 RIVERA, JAMES PAUL
 ROBERTS, MARGARET (THIESSEN)
 SCHIEBEL, CAROLYN A. (KINSEL)
 SCHWISON, BARBARA A.
 SHARPE, SARAH P. (JACKSON)
 STEELE, KENNETH D.
 THOMSEN, ALBERTA LOUISE
 TIETZ, GRACE L. (MARTHILL)
 VIK, BRUCE A.
 VILES, JOE PAT
 WAGNER, OLGA S.
 WAGNER, ROBERT E.
 WALLACE, JULIE A.
 WARREN, JAMES
 WERNER, GLENN D.
 WISHART, ALLTRINA P. (HENNING)
 WOLFF, HELEN M.

1962

ADAMS, DELORES A.
 ALBERS, JAMES L.
 ALBERS, RUTH ANN (WALKER)
 ARTINIAN, NOUJ
 BARNES, VAL EDMOND
 BARRREITER, MARGO E. (SCHWEND)
 BATES, WILLIAM
 BENTSON, RICHARD A.
 BRILLHART, RITA A.
 ERISE, ELAINE
 BROWN, EUGENE R.
 PUMGARDNER, LARRY C.
 CHAPPELL, FLORENCE A.
 COOPER, NEIL C.
 DAVIS, SUE (BERGEL)
 ELLSWORTH, RUTH ANNE (POEINSON)
 ELMQUIST, ROBERT
 FENNER, CAROL J. (TRANON)
 FOSTER, VIRGINIA FAY (LEFF)
 FREEMAN, BERT A.
 FRIZELLE, JACQUELYN W.
 GABELEIN, VIRGINIA LEE (FLUKE)
 GAVIOLA, ARLENE (APNESEN)
 GRIMSRUD, THOMAS
 GULLETT, DENNIS R.
 HAMPOND, RONALD CLOK
 HANSON, DEANNA G.
 HARLOR, JAMES L.
 HELI, TRICIA, NORA C. (DAY-JEFF)
 HELSTROM, RICHARD L.
 HOGSTAD, DUANE F.
 HOLMSTROM, BRANTON F.
 HOPMAN, JANICE E. (THOMPSON)
 HUNTICHTER, VIRGIL A.
 INAHNIT, ELAINE L.
 JACOBSON, BETTY
 JOHNSON, ELLAN L.
 JOHNSON, GERALDINE (KISS)
 JONES, BRIAN T.
 JONES, SHIRLEY F. (CATCOLL)

KATZ, EDWARD M.
 KEISER, DORIS D.
 KIRTLEY, STEPHEN E.
 KITTELSON, MARGARET (HENDERSON)
 KJOME, ROBERT L.
 KLINE, ALTA V.
 KLUTH, RONALD W.
 KRUEGER, MARILYN J.
 KUMM, MARGARET F. (SELVESEN)
 LAIRD, VIDA JEAN (WAINSCOTT)
 LIGHT, LINDA LOU (HENDERSON)
 LINT, ISABEL F.
 MADSEN, PETER F.
 MALANG, LOUIS
 MALCOM, MARY C.
 MELBY, MARILYN C.
 MEYERS, JOHN M.
 NILES, PAUL
 MILNE, KATHLEEN D. (KLINE)
 MOLZON, FREDERICK J. (LAIRD)
 MONTGOMERY, ARTHUR (JUST)
 MONTGOMERY, JUDITH C.
 MORGAN, ELINOR JILL (HUCKINHAM)
 NEGGEN, CONSTANCE E.
 NELSON, AUREY HOPE (PIERCE)
 NELSON, GARY
 NICHOLS, SUSAN C. (CHAFFER)
 NILSSON, IRJA M.
 NORMAN, GARY D.
 NOWAK, MIKE
 O'NEILL, JUDITH M. (STENSEN)
 OLSEN, NANCY L. (KAPP)
 OLSON, NORMAN L.
 PALMER, GEORGE W.
 PARLEY, NANCY (JOHNSON)
 PAUL, ROGER
 PETERSON, MELVIN PAUL
 PILLSBURY, CLARICE ANN (HENTKE)
 POORE, VICTORIA ANN (RUE)
 RIEGEL, HELEN B. (OGARD)
 RIGGERS, KENNETH
 RIM, CHUN H. (CHOE)
 ROBERTS, DON L.
 ROBERTS, VIVIAN L. (FEAULIEN)
 ROEMRIVILD, CONSTANCE
 POLAND, PATRICIA A.
 ROOT, JOAN (REFELAND)
 ROWE, SUSAN L.
 RURY, HOWARD R.
 RUSCH, LYNDY D. (EYRIKSON)
 RYDGER, NANCY ANN
 SALA, A. FRANCES (LAND)
 SCOTT, HELEN F. (SEIC)
 SEATON, ALBERT E.
 SEVDE, JAMES
 SHACKLEY, SANDRA ANN (PEPPER)
 SLETTA, RONALD
 SMITH, GARY F.
 SMITH, JACK P.
 SODERGAARD, SYLVIA L.
 SOLAR, HAZEL B.
 STRAND, WALTER L.
 STREETER, DAVID G.
 TAYLOR, ARTHUR W.
 THOMSEN, MADINE ANN
 TIETZ, JOHN
 UNREIN, PATRICIA G. (CADD)
 VAN TIME III, KAREN SUE (OLSON)
 VAN WINKLE, GRACE (CARLING)
 VOECKS, LEON R.
 VON FURSTENAU, ISOLDE
 WIESE, DELORES J. (THOMPSON)
 WILLIAMS, ALCA (FLATEN)
 WILLIAMS, LYNDY J. (WESTON)
 WOHACK, JAMES

1963

ADAIR, ELIZABETH (BEKKEVOLD)
 AMEND, NORINE K. (RAGOVICH)
 ANDERSEN, BEVERLY J.
 ANDERSON, CHERILYN (DARRICHER)
 ANDERSON, KAREN MARIE (HENDRICKSON)
 BAERLOCHER, PHILIP W.
 BARNES, MAUREN (PETERSON)
 BARRETO, ANITA
 BARRETO, LUCY
 BEESTON, CAROL A. (MINSHULL)
 BENGSTON, C. RICHARD
 BENTSON, LORETTA (YOUNG)
 BERG, JEAN Y.
 BLACK, EUGENE W.
 BOGGS, JANET M.
 BROWN, NETHA A.
 CARPENTER, LEE F.
 CARR, GAIL C.
 CHANEY, PATRICIA L.
 CHRISTENSEN, KENNETH
 COLLINS, KAY (SANDGUST)
 COLLINS, TAMARA J. (SMALLWOOD)
 CONRADS, CAROLYN A. (SMILNER)
 DARCEY, LINDA (SCOTT)
 DEAN, BETTY ANN
 DENNY, MARY L.
 LICKMAN, RUTH (SEIDENFELD)
 DODDIE, JEWELL (FLOR)
 LUPKKE, DUNCAN I.
 ECK, LINDA J. (NELESON)
 EDWARDS, DOROTHY C.
 EGAN, WILLIAM A.
 ELLIOTT, T. MICHAEL
 ENGELSON, MILVA A.
 ERICKSON, ALLEN
 FORTH, ALICE
 FRANKS, JONAS C.
 FRELSON, BEET F. (ING)
 GETTEL, GERALD
 GREGERSFAY, ELISABETH A.
 GRIFFITH, JEANETTE (HILLIARD)
 GRUCE, CAROL A. (HARRIS-OLDEN)
 GUTHMER, JOYCE A. (HILL)
 HAAL, CARL F.
 HALE, HILL C.
 HALVORSON, FREDERICK W.
 HANLON, LINDA L. (SKOGSD)
 HANSEN, DENNIS E.
 HEALY, MICHAEL A.
 HENDERSON, MARLYN L. (KORHONEN)
 HERBERT, MARGARET L.

1964

ADAMS, KAREL J.
 ALDERSON, DEANNE T. (DUNBAR)
 ALCINGER, GARY W.
 ALLER, SHARON
 PARKER, ROBERT W.
 BARNES, N. DIANE (ELLIOTT)
 BECKER, RICHARD
 BECKOE, DARRELL W.
 BILISKE, ALICE C.
 BLACK, LAURA A. (RUE)
 BLOMGREN, PHILLIP C.
 BOE, DAVID M.
 BOSTWELL, MELLIE YATES
 BRENNISE, INGRID G.
 BREWICK, MICHAEL S.
 BRITT, EDRIKKA S.
 BROECKEL, KAREN G.
 BROOME, DAVID J.
 BROWN, GARY W.
 BROWN, LINDA J. (WATKINS)
 BROYER, BRENDA A.
 BUSH, RUTH (JURE)
 CHRISTENSEN, TIXITHY
 CROOK, LYNN A. (CILLS)
 DAHL, LEONORE K.
 DANIELSEN, DENNIS A.
 DEBBS, KAREN J. (CLIFTON)
 JOEFKE, JACK E.
 DEERKE, JUDY E. (WILSON)
 DOW, VIRGINIA E. (KAYE)
 DUNBAR, CAROLYN G. (KENSLEY)
 EZZELL, SHARON M. (FRYE)
 FOLLETT, JUDITH ANNE (HARRIS)
 GETTIS, LYNN M.
 GOLDBERG, LESTER L.
 GRIMM, MARILYN J.
 GUTHRIE, GANTI (SILFAN)
 HANNIGAN, PAUL L.
 HARPPEL, MARILYN L.
 HARRIS, DENNIE FAY
 HARRIS, LON
 HATCH, DWAIN M.
 HEMPHILL, LEORA J. (WESSON)
 HOGLUND, GERALD C.
 HULL, KAREN W. (RASMUSSEN)
 HUSEBY, DONALD G.

HENRY, JEAN L. (GILLO)
 HOHMAN, KAREN S.
 HORRUNG, NANCY L.
 HSUEH, THEO KUN-CHI
 HUKKE, CAROL
 HUNTER, VERLEE J.
 JENKINSON, JAVIER C.
 JENSEN JR., REY F.
 JONES, PAUL W.
 KELLY, JOHN M.
 KEPPA, THELMA W.
 KIRKBY, KAREN M.
 KLINE, MIRIAM R. (ELIKONIST)
 KNUTSON, MARILYN K.
 KUROKI, YOSHIFUG
 KVAM, JOHN M.
 LARKIN, CARRIE (JOHNSON)
 LARSEN, GARY D.
 LEBLANC, ROBERT J.
 LEMKE, MARY ROSALIE
 LEMKE, NORMA J. (MEFFILL)
 LENBERG, JOSEPH A.
 LENZ, CHRISTINE L.
 LOHN, GERALD D.
 LOKENSGARD, KATHRYN (SUESTAD)
 LYNN, SHANNON D. (BLUMBERG)
 MAC DONALD, JEANETTE C.
 MANN, RICHARD E.
 MATKOVICH, JUANITA A.
 MC CLURG, DORIS I.
 MC NEAL, CLIFFORD A.
 MEYER, DARYL G.
 MEYER, KENYTH
 MEYERS, VIVIAN F. (SMITH)
 MILES, JONI C. (SAGEN)
 MOLLET, JANICE
 MORISSETTE, ELSIE A. (MOFF)
 MUNRO, CAROLYN (HYSTAD)
 MYHRE, CAROLYN M. (MOELLRING)
 NELSON, JOHN D.
 NELSON, JOHN G.
 NELSON, PATRICIA
 NORMAN, BONNIE (JUPSTAD)
 O'NEILL, AMELIA A.
 OLSON, GARY W.
 OLSON, RUTH G. (GAMMEL)
 ONSTAD, LYLIA
 PEABODY, CORNELIA
 POOLE, LEONARD C.
 PRIMOLI, PATRICIA E. (NEUMEYER)
 PRINCE, LORRAINE K. (MALONEY)
 QUALE, SANDRA
 RATFIELD, LOUIS W.
 PEKER, MARSHA J. (TIVETEN)
 ROGERS, DENNIS D.
 ROSS, RAY D.
 RUCKER, DAVID
 RUGTSI, REBECCA F.
 SAITO, KUNIO
 SANDERS, DWAIN E.
 SANDERS, MAMIE J. (FEARCALL)
 SCHNELL, PATRICIA
 SCHWEIGER, WALTER
 SEIFERT, KIRK A.
 SIMAS, GRETCHEN S. (GALL)
 SIMMANTEL, MARILYN G. (ROSS)
 SIMPSON, FRENDA
 STAUFFER, JUELLE (MERRIS)
 THORVILSON, JAMES C.
 TURMAN, SHAFON
 WAGNER, JAY
 WALTERS, CAROL J.
 WEISSHAAR, BERNARD L.
 WHITE, FONTE A.
 WILLIAMS, DAVID F.
 WILSON, DONALD C.
 WONG, HOWARD A. F.
 WRIGHT, MARILYN A. (HALL)
 ZIMMERMAN, MARTA

JAMES, KENNETH E.
 JENSEN, DIANE R.
 JOHNSON, INGRID M. (HAGLUND)
 JOHNSON, MAIA K.
 JORDAN, DONALD CARL
 KANE, ARLENE R. (GLSTAD)
 KARLSEN, STEINAR P.
 KENMIR, CHARLES T.
 KLASEY, MARGARET E.
 KOSKI, JOANNE F. (ROFINSON)
 LANG, ARTHUR E.
 LARSON, ARLO J.
 LARSON, JAMES E.
 LEE, DOROTHY J.
 LEINER, MARGARET A.
 LINDVIG, LARRY W.
 LINEBACK, DOROTHY D.
 LUDVIGSEN, MARY ELLEN
 LUNDRING, KIRSTEN M. (PODDING)
 LUNDRING, L. KARSTEN
 LYNCH JR., CLETUS V.
 MARTIN, PETER H.
 MASUDA, LINDA R.
 MC DOVALD, ALICE T.
 MONSON, ORLIN J.
 NACE III, GEORGE
 NEILS, DIANE L.
 NESBITT, DALE E.
 NESS, ALICE (KAALAND)
 NORRIS, DOROTHY C.
 OHLDE, NICOLE D.
 OLSON, DANIEL E.
 OSNESS, WILLIAM H.
 PAGE, JAMES
 PARNELL, JAMES A.
 PEARSON, CARL J.
 PETTETT, LINDA L. (FRODHUM)
 PORTEOUS, BESSIE L.
 POTTER JR., DONALD M.
 FRIEST, BEVIA L.
 PULIS, CALVIN J.
 PUTMAN, JOHN F.
 PUTMAN, KAREN I. (MC DONALD)
 PYLE, LYLE M.
 RADKE, WILLIAMINE
 REINSDORF, JANET A.
 REYNOLDS, KATHY
 ROBERTS, RITA L.
 RUCKS, ERNEST E.
 RUDOLPH, ROBERT P.
 RYCLAND, ROBERT E.
 RYKER JR., JUDY L. (MASH)
 SCHNEIDER, LLOYD F.
 SELLAR, BARBARA E.
 STIVER, DARLA R. (MILNEHNER)
 CKOS, EDITH M.
 SMILEY, BRIDGET A.
 SMITH JR., EDWARD C.
 SMITH, ARLENE M.
 SMITH, PAUL E.
 SOLLIE, JANET J.
 STAMPOS, SYLVIA M. (MOLDEPENT)
 STANLEY, RICHARD L.
 STICERS, ANITA
 SUGDARTH, DONALD C.
 SWANSON, DON E.
 TEPEL, PATRICIA A.
 THOMAS, WARREN
 TODAK, LINDA (STAFF)
 URLIE, PAUL L.
 VANDERHAEGHEN, CHARLOTTE A.
 VANTURE, VIRGINIA (SPEENS)
 VINKE, SANDRA M.
 WAPNER, STANLEY F.
 WATTS, CLARENCE B.
 WILLS, HELEN L.
 WOODMAN, ROBERT C.
 WORRELL, MERILY F.
 WRIGHT, ELAINE L. (FROSON)
 WYMAN, SHERYLL (MCLELLIN)
 YATES, JUDY ANN (WATSON)

1965

AMERD, JAMES L.
 BALMERY, WALTER C.
 BEIER, KAREN L. (JOHNSON)
 ELYTHE, WILLIAM E.
 CALDWELL, JAMES F.
 CHAPLEY, JOHN
 CHRISTOPHERSON, ALVIN A.
 CILLO, ROE
 CLEMENTS, MARIBETH (CRAN)
 CUSTER, BARBARA J. (FERLETH)
 DAVIS, MARADEE (WESTLEY)
 DEJARDINE, MAXINE A. (CARR)
 EMLY, EILENE M.
 ERICKSON, MARIE (HAFNREITER)
 FECKEL, CAMILLE (HANSMANN)
 FREDERICKS, KENNETH C.
 GEISLER, MARDELLA L.
 GETTEL, JOHANN (DEANY)
 GOULDING, GERALD J.
 GUEST, KATHLEEN A. (HEGGER)
 GUIRL, KAY K.
 GUTHRIE, GAYLOR C.
 HAUVIK, JUDY (FRAZIER)
 HAUVIK, D. JAY
 HANSON, JOHN F.
 HATLEN, ROE H.
 HENSLEY, DOROTHY W. (WAAS)
 HILL, ROBERT V.
 HJELMERVIK, KENT N.
 IVERSON, RODNEY W.
 JOHNS, EVA
 KELLEY, NANCY (KRUEGER)
 LAMPA, KATHY (JOHNSON)
 LARSON, REYNOLD D.
 LOH, WICKHAM H.T.
 LUNDGREN, LARRY V.
 MACK, KATHERINE (LACFOSS)
 MALONEY, BARBARA (BIZORTH)
 MANDRICK, RUTH N.
 MANSOOR, SANDRA (STEIN)
 MAY, RICHARD L.
 MC KOWN, HENRIETTA M.

MILLER, SHERRIL L. (CARLSON)
 MONAHAN, THOMAS G.
 NICHOLAS, PAUL P.
 NIEMI, HELEN (NYSAAPO)
 NORDSTROM, MARYLOU (CURTIS)
 O'NEAL, JAMES C.
 OMDAL, KAREN A.
 PETERSON, ANNA F.
 PIEKSON, VERNE P.
 POLLARD, MARGARET ANN (COOPER)
 POLLOCK, JOANN K. (LUKENBILL)
 REITZ, JOANNE E.
 RICHARDSON, SHARON N. (RICE)
 RIFFEY, HAZEL F.
 SAATHOFF, EVELYN A.
 SALATINO, DOLORIS J.
 SANDERS, MALFICE I.
 SELLAR, RONALD L.
 SHACKELFORD, MARION F. (JACOBSON)
 SIGUENZA, EUGENE (MC GILLIVRAY)
 SKUPDALL, JAMES A.
 SORENSON, CHRISTIAN P.
 STEWART, MARILYN J. (JCHANESE)
 SUNG, WERNER
 SVENDSEN, ANN E.
 TARLETON, CHARLOTTE F. (LUEFTKE)
 THOMAS, KEVIN P.
 THUMMA, JUDITH (LEFAS)
 URLIE, ANNE E. (GAVLICK)
 VAUGHAN, THOMAS G.
 WAKIN, DONALD G.
 WELFELT, ROBERT W.
 WESTGARD, GARY A.

1966

APPEL, MARY
 BIRELHEIMER, STEVEN F.
 BORCHMANN, JANET A. (WATMS)
 BRITTON, BEATE E.
 HUSLACH, WANDA L. (HUGEN)
 CARTER, LINDA M.
 CARVER, CAROL (PETERSON)
 CLARK, RICHARD P.
 DEAN, CAROLYN
 DOUGLAS, JANET M. (FETES)
 DOYLE, MAUREEN J.
 FALK, ROGER J.
 FARVELL, JAMES
 FRELND, ROBERT E.
 GOGGINS, JEAN E. (PETERSON)
 HATLEN, BEVERLY J. (THOMPSON)
 HEHLY, FLORENCE L.
 HICKEY, VIVIAN J. (HELSON)
 HOFFMAN, JOYCE M. (JON)
 JAMES, MARION L. (TIERKE)
 KELLER III, LORNA (LANNI)
 KNUTSEN, KENNETH L.
 LANG, JEANNE K.
 LARSON, CHARLES L.
 LARSON, LOUISE (FERFELD)
 LEE, DAVID F.
 LEE, JEAN P. (MCROUQUIST)
 LENGENFELDER, BARBARA E.
 MAGGON, DIANE J. (FERRY)
 MATHENA, IRENE L.
 POE, SONJA E.
 HOLZMAN, ROONEY
 MORTVEDT, HOWARD W.
 NELSON, NEILA F. (MCGONSON)
 O'CONNOR, HOWARD
 OSTERGREN, JOHN C.
 PEDERSON, ROBERT A.
 PEERBOOM, LEON
 PILZ, ARDIS
 POLLOCK, RUSSEL L.
 PUST, MARGARET F.
 QUAM, PETER
 REES, PENELOPE J. (ALLISON)
 REICHLIN, JOHN B.
 RIEGSEL, LORRAINE (SAXTON)
 RODGERS, PATRICK M.
 ROLFSON, HAROLD M.
 RUCKER, LES
 SCHNEIDER, BARBARA (FROBACK)
 SELBY, LINDA M.
 SHAW, RICHARD H.
 SIBLERUD, VIRGINIA (LOY)
 STEELE, BETH M. (FISHER)
 STEVENS, LARRY M.
 SYLVESTER, JOYCE M.
 TORKELSON, CAROL (CFCNK)
 TRELLOGEN, VEONA M. (WICKLANC)
 WALKER, PHYLLIS J.
 WALL, SONJA P.
 WEBB, KAREN (HALVERSON)
 WILSON, DOROTHY A. (WILHELMS)
 WILSON, MARY (ONSTAD)
 WININGEF, PENNY
 ZEPF, JEANNE K. (SHYLER)

1967

ALLEN, POMITA L. (STILL)
 ANDERSON, CONSTANCE ANN
 ANDERSON, RAEDER F.
 ANDVIK, TOVE ELLEN
 ARTHUR, SHARON R. (TYLER)
 BARNES, BILLY BARR
 HENSON, BARBARA A.
 BERG, KRISTINE L.
 EUDRIUS, LINDA
 BURDETT, JUNE E. (KOCNS)
 CAMPBELL, ANDREA L. (BECK)
 CONNELL, KAREN A. (MUEST)
 CROWNER, PAUL L.
 DEAN, BARBARA A.
 DEAN, JAMES R.
 DEMILLE, MYRNA
 DION, DAVID R.
 FHELY, LORRAINE
 ELLIS, DIANNE C. (FFLMSVOLD)
 ERLANDER, JOHN J.
 FENNIMORE, GAYL (MELFAS)

FJASLIE, M. ELIZABETH
 FLAIZ, CARLENE (GCLIES)
 FRAZIER, SHIFLEY J.
 GARDNER, SYLVIA E.
 GILSON, ELIZABETH (WENZEL)
 GJETTEN, NACPI
 GLARY, CHERYL K.
 HAGAN, HERMAN S.
 HALVORSON, EANA C.
 HEALY, SANDRA K. (FRYE)
 HEIMSOOTH, MARGARET A. (PFLUGGER)
 HENGRICKSEN, DAVID E.
 HUPER, WALTER M.
 HUGHES, VERGIE I. (PETERSON)
 HUNTER JR., GERALDINE K. (COHENE)
 HUNTER JR., JOHN R.
 HUTCHISON, CONSTANCE E. (COOKHAM)
 JORGENSEN, SUE ANN (STROMMEYER)
 KANGAS, AUDREY F. (LISSETT)
 KAGWAI, CAROL A. (KUSTTA)
 KINTNER, JOHN C.
 KOUTTAINAY, ABELL-PAUL S.
 KRICHNAM, KADAYAN S.
 LAMBERTH, BARBARA E. (THOMPSON)
 LARSEN, SLSAN A.
 MAC INTYRE, ROBERT C.
 MARZANO, DAVID L.
 MC CLUNG, VERAOR F.
 MILLER, JANET E. (ESTVOLD)
 MILLER, VIRGINIA JO
 MOLL, CHERYL LYAN (FRANDEL)
 MORRIS, CARMEN F.
 NATVIG, DLAKE
 NELSON, JANET E.
 NEUMANN, PATRICIA D. (WHITTAKER)
 NICHOLS, GAY R.
 NILSON, VIVIAN A.
 O'LEARY, ALICE C.
 OLSON, RANDALL J.
 OWEN, RUTH S.
 OWENS, NOEL W.
 PETERS, EUDCEA J. (PATER)
 PHILLIPS, JAMES ALAN
 POE, CONSTANCE F. (LLEWIS)
 POWELL, MICHAEL F.
 PROSSER, SUSAN L. (WHELF)
 READ, SYLVIA E. (COLSON)
 ROEHL, IRENE G.
 SCOTT, GENE M.
 SMITH, KAREN L. (BROWN)
 SNEKVIK, CHARLES M.
 STEEN, J. RICK
 STEFFEN, LAWRENCE J.
 STEVENS, MICHAEL M.
 STEWART, BARRY C.
 STUART, JAMES A.
 TOLONEN, JOHN K.
 TURNER, SYDNEY J.
 VASSER, JAMES R.
 WAN, PING (KWAN)
 WARREN, RONALD C.
 WEBSTER, SUSAN F. (PETERSON)
 WILSON, LOVETTE I.
 WINN, FRANCIS R.
 WOLLIN, PEARL V.
 YOKERS, PAUL F.
 YOKOYAMA, KASUYOSHI

1968

AAULAND, ANDERS E.
 ALEXANDER, DAVID F.
 BARNHART, BETTY J. (SHERRILL)
 BECKMAN, JOANN PATRICIA
 BELL, DELANE R.
 BENS, JANICE M. (PEINIKKA)
 BISHOP, DAVID K.
 BOWEN, JUDY A.
 BROWN, RYRON E.
 CROWNER, CORPINE (SHETTERLY)
 DIKEMAN, WILLIAM F.
 DOUGLAS, MICHAEL E.
 DUNKLE, ROBERT A.
 FARMER, BEVERLY J. (DUNBAR)
 FOLLESTAD, RICHARD C.
 FRANCOLOSY, CAROL MARIE (VINCENT)
 FRANKE, SUSAN (STEYNER)
 FRAZER, WILLIAM R.
 FREDERICKS, KAREN (MILUS)
 GEPHART, SHARON E.
 HAACK JR., GORDON W.
 HALLWYLER, KAREN P. (CASE)
 HENSEL JR., GRETCHEN R. (HENSEL)
 HENSLEY, KATHRYN (KALTENBACH)
 HERTIG, MARILEE A. (MOORS)
 HOBSON, CAROL (GODDIN)
 HUNG, KAREN L. (SCHLUETER)
 HUNT, CHERYL (IFWIN)
 IMRIE, SANDRA I. (SIVERTSON)
 JOLLY, EIVONA A.
 JODE, PAUL F.
 KIRKGAARD, ROXIAE F. (WHITE)
 KIRKWOOD, MIRIAM L. (CAVAT)
 KRUG, ANITA F.
 KRUMMEL, CARL L.
 LAGESSON, VERAER
 LAUN, HERBERT E.
 LEE, SALLY J. (WIESNER)
 LINK, NANCY K.
 LOVSTROM, SUSAN RAE (ANDERSON)
 LYSC, HARLAN E.
 MACOMBER, ANNETTE M. (LEVERSON)
 MARKS, CHARLENE E. (KELSEY)
 MASUDA, LESLIE J. (WISSIN)
 MC CUNE JR., GEORGE F.
 MC COWELL, T. MICHAEL
 MC GILLIVRAY, JULY A.
 MC KENZIE, JOHN C.
 MC NABB, JEANNE S. (SLEYSTEEN)
 MILLER, SHARON L. (FAST)
 MINER, KARY BETH (HANNCK)
 MINTURN, EZRA D.C.
 NORRAN, NOLAN D.
 NUNN, ROSEMARY G. (FIECER)
 O'NEIL, GALE K.
 PETERSEN, EDWIN F.
 PETERSEN, PRINCESS C.

PETERSON, STEVEN J.
 PETZOLD, TESSA G.
 FRUITT, D. TROY
 REILLY, COLLEEN KAY
 FEISNER JR., ZAC H.
 KENGLI, GARY W.
 SCHAFFNER, CAROL J.
 SELFORS, CONRAD W.
 SHOEMAKER, JOHN A.
 SHULL, PAMELA K.
 SMITH, CHERYL A.
 SPAULDING, SANDRA L. (SANDBERG)
 STUEN, CAROLYN (EICHLEF)
 STUEN, JOHN F.
 TABER, LINDA M. (NYCKELSEN)
 THOMAS, TIMOTHY A.
 VERMILLION, JAMES
 VICKERY, LINDA L. (CANDAKER)
 VUULSTEKE, KENNETH F.
 WAGNER, KEMETH C.
 WEBER, PAREN A. (SOFIT)
 WILLIAMS, MELODY E.
 WILSON, DAVID G.
 WILSON, IRENE C. (UNDERHILL)
 WISHARD, PHILLIP A.
 YOUNG, JUERGEN A.

1969

ALBERTS, THOMAS J.
 ALFIERE, GAY (COFFENE)
 ALIE, VERNELL K. (MUNSON)
 ALLEN, GERALD E.
 AMDAL, MICHAEL K.
 ANDERSEN, JANET L.
 ANDERSON, SUSAN K.
 BEAHLER, CHRISTINE C.
 BEAL, JAMES E.
 BEIER, DAVID H.
 BELLER, ROBERT W.
 BLAIR, ROCHELLE M.
 BRERLEY JR., THOMAS E.
 BROEDER, BARBARA A.
 BRUNE, JENNENE (MALADY)
 BUCCI, SHERYLL E. (BRADY)
 BURNS, JEFFREY A.
 CAMPBELL, BRUCE D.
 CERNY, SHIRLEY A.
 CHURCH, LINDA A.
 CORBAN, VERNON
 CRONK, MARILYN F.
 CRUMP, LEE W.
 DENZER, ANN
 DUNHAM III, WILLIAM C.
 DUNNING III, ABEL F.
 ELMER, JOHN V.
 ERICKSON, CAROL A.
 FARRAR, LOIS (SCRIVITZKA)
 FPAZ, DARLENE E. (HURMEISTER)
 FRANZ, NANCY L.
 GATES, JEANETTE (KIPPY)
 GEHRING, PHYLLIS E. (HAUCK)
 GILBERT, GRANT C.
 GORDON, JACQUELINE F.
 GRANDE, ANITA M.
 GRIES, MARGRET (CHRISTENSEN)
 HANSEN, PAUL WEFNER
 HENRICH, DENNIS
 HEPNER, BRENT A.
 HOLT, DOUGLAS C.
 HOOPER, RICHARD W.
 ISHON, JOYCE (PETERSON)
 JACKSON, STANLEY A.
 JAMES, FRANK A.
 JOHNSON, MARLYS J. (FARRINGTON)
 KASPER, GARY A.
 KEPLINGER, SUSAN M.
 KING, GAY
 KING, RICHARD J.
 KORTLVEACH, ETHEL M.
 KWAK, ADA FEAN-HEE
 LARSON, JAMES E.
 LASANSKY, MAURICE
 LEWIS, KAREN M.
 MAC LEOD, KAREN E. (MPEDES)
 MANGER, EUGENE L.
 MATHOOD, GARY A.
 MC CARTY, KAREN J.
 MC COLE, GAYLE M. (FRYFF)
 MC LEOD, BONNIE M.
 MELTON JR., JOHN F.
 MICHAEL, JOE LEE (MILSON)
 MILLER, DANIEL E.
 MOFFE, JANET L.
 MORRIS, GLORIA A. (MC SWAIN)
 MURFELL, KAREN ANN (MUEPFLER)
 NATVIG, CANDACE (HALVORSON)
 NESSE, DONALD J.
 OJALA, JAMES F.
 OWINGS, RICHARD L.
 PERRY, SUSAN E.
 RAYMOND, GARY L.
 REISDORF, ELEGNCE A. (WAGNERFLUSER)
 RICHEY, GARY N.
 RINGO, JEANETTE (FRYFF)
 ROBBINS, CYNTHIA L.
 RODGERS, PATRICIA C. (THOE)
 RYNEARSON JR., FREDRICK L.
 SAATHOFF, LINDA
 SANDERS, KAPLEA A. (FINCO)
 SCHAAP, TINA
 SCHUKNECHT, ROGER F.
 SENEY, PATRICIA A. (KERNIC)
 SIMONSON, JERALDINE A.
 SMITH, DIANNE M.
 SMITH, MARGENE F.
 SMITH, NANCY A.
 SMITH, TIM C.
 SPIES, DAVID L.
 STALLINGS, ROSEMARY C. (CAMERON)
 STEINBERG, SHARON A. (LEE)
 STEINHOFF, LGIE F. (SWAN)
 TYE, WILLIAM M.
 UTTER, KALENE (KJITHERSON)
 WICKS, JANET E.
 WIGEN, GEORGE C.
 WISDOM, SIDNEY C.

Calendar of Events



Special Opportunities

Board Of Regents

Tacoma and Vicinity
 Dr. T. W. Anderson
 Mr. George Davis
 Mr. Melvin R. Knudson
 Dr. Richard Klein
 Mr. George Lagerquist
 Mr. Harry Morgan
 Dr. W. O. Rieke
 Dr. Roy Virak
 Rev. David Wold (Chairman)

Seattle and Vicinity
 Mr. R. Gary Baughn (Vice Chairman)
 Rev. Thomas Blevins
 Rev. Charles Bomgren
 Mr. Paul Hoglund
 Mrs. Ruth Holmquist
 Rev. Clifford Lunde
 Mr. Frank Jennings
 Dr. Christy Ulleland (Secretary)
 Dr. George Wade

Western Washington
 Mrs. Helen Belgum
 Rev. David Steen

Eastern Washington
 Mr. Alvin Fink
 Mr. James Gates

Oregon
 Mr. Howard Hubbard
 Mr. Galven Irby
 Dr. Casper Paulson
 Rev. E. Duane Tollefson

Other
 Dr. John Dahlberg, Idaho
 Rev. Bob Newcomb, Idaho
 Rev. Ronald Martinson, Alaska
 Dr. Jeff Probstfield, Texas
 Dr. William Ramstad, California
 Mrs. Dorothy Schnaible, Idaho

Advisory
 Mr. Loren Anderson, ALC
 Dr. James Unglaube, LCA
 Dr. Richard Trost, ALC/NPD
 Drs. John Petersen, Davis Carvey, Janet Rasmussen, Faculty
 Piper Peterson, Geoff Bullock, Brian O'Morrow, students
 Luther Bekemeier, Mary Lou Fenili, Lucille Giroux, Perry B. Hendricks (treasurer), Richard Jungkuntz, Harvey Neufeld

Editorial Board

Dr. William O. Rieke President
 Lucille Giroux Pres. Exec. Assoc.
 Edith Edland Acting Dir. Alumni Relations
 Dr. Martin J. Neeb Exec. Editor
 James L. Peterson Editor
 James Kittilsby Sports Editor
 Kenneth Dunmire Staff Photographer
 Connie Harmic Edit. Asst.

What's New With You?

Name _____
 Address _____
 City _____ State _____ Zip _____

Please check this box if address above is new. (Attach old mailing label below.)

Class _____ Spouse Class. _____
 Spouse maiden name _____

Mail to:
Nesvig Alumni Center
Pacific Lutheran U.
Tacoma, Wash. 98447

December

- 1-12 Wekell Gallery, Paintings and Drawings by Sarah Teofanov, 9-4 p.m. weekdays Christmas Festival Concert, Eastvold Aud., 8 p.m.
- 7 Christmas Festival Concert, Pantages (Tacoma), 8 p.m.
- 9 Christmas Festival Concert Eastvold Aud., 4 p.m.
- 11 Concert, Festival of Lessons and Carols, Eastvold Aud., 8 p.m.
- 13 Concert, Composers Forum, Univ. Center, 8 p.m.
- 15 Mid-Year Commencement, Eastvold Aud., 2 p.m.
- 16-22 Wekell Gallery, Senior Show by student Kathy Frye, 9-4 p.m. weekdays
- 17 Festival of Lights Advent Service, Univ. Center, 9:30 p.m.
- 21 Christmas Break

January

- 7 Concert, Overland Trio Plus One, Univ. Center, 8 p.m.
- 7-24 Wekell Gallery, Chuck Lund and Eileen O'Leary, 9-4 p.m. weekdays

- 8 Campus Ministry/Religion Department FORUM, Univ. Center, 7 p.m.
- 9 Lecture, "Minding the Brain," Curt Huber, Univ. Center, 8 p.m.
- 10-11-12-17 College Forensics Tournament, Univ. Center, all day
- 17 Martin Luther King Jr. Brith-day celebration, 7 p.m.
- 27 Dedication, William O. Rieke Science Center, 2 p.m.

February

- 1-28 Wekell Gallery, Seattle Sampler, 9-4 p.m. weekdays
- 3 CommUniversity, Univ. Center, 3:30 p.m.
- 7 Regency Concert Series, Washington Brass Quintet, Univ. Center, 8 p.m.
- 8-9 University Theatre, "Shadow Box," Eastvold Aud., 8 p.m.
- 10 Artist Series, "Chanticleer," Eastvold Aud., 8 p.m.
- 12 Concert, Choir of the West Homecoming, Eastvold Aud., 8 p.m.
- 15-16 University Theatre, "Shadow Box," Eastvold Aud., 8 p.m.
- 19 Black History Celebration, Univ. Center, 7-9 p.m.

- 21 Concert, Student Soloist/University Orchestra, Eastvold Aud., 8 p.m.
- 22 BANTU sponsored talent show, Eastvold Aud., 7 p.m.
- 26 Concert, University Chorale Homecoming concert, Eastvold Aud., 8 p.m.
- 27 Schnackenberg Lecture Series, Univ. Center, 8 p.m.

March

- 1-13 Wekell Gallery, Anne-Bridget Gary, 9-4 p.m. weekdays
- 1 Concert, University Jazz Ensemble, Univ. Center, 8 p.m.
- 7 Concert, Regency Concert Series, Northwest Wind Quintet, Univ. Center, 8 p.m.
- 9-10 Childrens Theatre, "Punch and Judy," Eastvold Aud., 2 p.m.
- 9 Intercultural Fair, Univ. Center, 10 a.m.
- 9-10 Parent's Weekend
- 12 Concert, University Symphonic Band, Eastvold Aud., 8 p.m.
- 14 Health Fair, Univ. Center, 11 a.m.
- 15-29 Wekell Gallery, Lawry Gold, 9-4 p.m. weekdays
- 15 Artist Series, "PDQ Bach," Olson Aud., 8 p.m.

Chorale, Choir Winter Concert Tour Schedules

UNIVERSITY CHORALE

Edward Harmic, Director

OREGON
The Dalles, Jan. 18
 Zion Lutheran, 7:30 p.m.
La Grande, Jan. 19
 Zion Lutheran, 8:00 p.m.
Baker, Jan. 20
 St. Francis Cathedral, 7:30 p.m.
Medford, Feb. 2
 Zion Lutheran, 8:00 p.m.
Roseburg, Feb. 3
 Faith Lutheran, 11:00 a.m.
Corvallis, Feb. 3
 Grace Lutheran, 8:00 p.m.

IDAHO
Boise, Jan. 21
 King of Glory Lutheran, 8:00 p.m.

UTAH
Sandy, Jan. 22
 Good Shepherd Lutheran, 8:00 p.m.

NEVADA
Las Vegas, Jan. 23
 Faith Lutheran Junior-Senior High School, 7:30 p.m.

CALIFORNIA
Palm Desert, Jan. 24
 Hope Lutheran, 8:00 p.m.
Tustin, Jan. 25
 Red Hill Lutheran, 7:30 p.m.
San Gabriel, Jan. 27
 Trinity Lutheran, 3:00 p.m.
Granada Hill, Jan. 27
 St. Stephen Lutheran, 8:00 p.m.
Santa Barbara, Jan. 28
 Trinity Evangelical Lutheran, 7:30 p.m.

Santa Maria, Jan. 29
 Bethel Lutheran, 7:30 p.m.
Cupertino, Jan. 30
 Bethel Lutheran, 8:00 p.m.
Lodi, Jan. 31
 St. Paul Lutheran, 7:00 p.m.
Sacramento, Feb. 1
 St. John Lutheran, 8:00 p.m.
WASHINGTON
Tacoma, Feb. 23
 First Lutheran, 8:00 p.m.
Seattle, Feb. 24
 Magnolia Lutheran, 11:00 a.m.
Bellevue, Feb. 24
 Grace Lutheran, 4:00 p.m.
Tacoma, Feb. 26
 PLU- Eastvold Auditorium-Homecoming Concert, 8:00 p.m.

CHOIR OF THE WEST

Richard Sparks Director

WASHINGTON
Puyallup, Jan. 18
 Mountain View Lutheran, 8:00 p.m.
Ellensburg, Jan. 19
 Hertz Recital Hall-Central Washington U., 8:00 p.m.
Walla Walla, Jan. 20
 Cordiner Hall, 7:00 p.m.
Wenatchee, Jan. 28
 Grace Lutheran, 8:00 p.m.
Bellingham, Jan. 29
 PAC Concert Hall-Western Washington U., 8:00 p.m.
Anacortes, Jan. 30
 Anacortes High School, 8:00 p.m.
Port Angeles, Feb. 1
 Port Angeles High School, 8:00 p.m.

Shelton, Feb. 2
 Shelton High School, 7:30 p.m.
Poulsbo, Feb. 3
 First Lutheran Church, 7:30 p.m.
Bremerton, Feb. 3
 Our Saviour's Lutheran, 3:00 p.m.
Olympia, Feb. 8
 Good Shepherd Lutheran, 8:00 p.m.
Issaquah, Feb. 9
 Lutheran Bible Institute Chapel, 8:00 p.m.
Seattle, Feb. 10
 First Lutheran Church of Richmond Beach, 3:00 p.m.
 Glendale Lutheran, 8:00 p.m.
Tacoma, Feb. 12
 PLU-Eastvold Auditorium-Homecoming Concert, 8:00 p.m.

IDAHO
Lewiston, Jan. 21
 Trinity Lutheran, 7:30 p.m.
Moscow, Jan. 22
 Emmanuel Lutheran, 8:00 p.m.
Coeur d'Alene, Jan. 23
 Communication-Arts Auditorium, North Idaho College, 8:00 p.m.

CANADA
Victoria, B.C., Jan. 31
 University of Victoria, 8:00 p.m.