

Pacific Lutheran

S C E N E

S P R I N G 1 9 9 7



Good News and Great Possibilities

Make a *Lasting* Difference campaign
nears winners' circle

PLU economist one of 10 scientists
selected for national fellowship

Pacific Lutheran

SCENE

SPRING 1997

- 3 **Good News and Great Possibilities** BY LINDA ELLIOTT
Pacific Lutheran University stands at the threshold of a new era with a renewed focus on mission. Take a look at the university's last five years and a glimpse into the future.
- 6 **Make a Lasting Difference campaign races to the finish line**
With just weeks to go before the five-year \$52 million campaign celebrates its conclusion, we pause to look at the difference your contributions have made for PLU.
- 12 **Urban agriculture harvests community pride** BY JANET PRICHARD
Economics chair Rachel Nugent was one of 10 scientists selected for a national fellowship last summer. She concentrates on the sustainability of urban agriculture around the world through the lens of public policy, the environment, hunger, economic development and community pride.
- 13 **City names park for PLU nature lover**
- 14 **Hey diddle diddle, alum makes a fiddle** BY KATIE MONSEN '96
- 13 **Class Notes**
- 19 **Winter Sports Summary**

ON THE COVER

President Loren J. Anderson stops and chats with Kathleen North and David Gunovich (both on the admissions staff at PLU) before heading to the employee Christmas Luncheon last December.



MANAGING EDITOR
Paul Porter

SENIOR EDITOR
Janet Prichard

ART DIRECTOR
Dean Driskell

PHOTOGRAPHER
Chris Tumbusch

CLASS NOTES EDITOR
Linda Satterlee

SPORTS EDITOR
Nick Dawson

EDITORIAL ASSISTANT
Katie Monsen '96

INTERN
Kai Nelson '96

ADVISORY BOARD
Loren Anderson
Jan Brazzell
Dana Endicott '92
Lauralee Hagen '75
Richard Londgren '59
Laura Majovski
Jeff Rounce '85
Cliff Rowe
Dan Voelpel '83

VOLUME XXVII, NUMBER 3

Pacific Lutheran Scene (ISSN 0886-3369) is published quarterly by Pacific Lutheran University, S. 121st and Park Ave., Tacoma, Wash. 98447-0003. Second-class non-profit postage paid at Tacoma, Wash., and additional offices. Postmaster: Send address change to Development Data, Nesvig Alumni Center, PLU, Tacoma, Wash. 98447-0003.

Internet

Visit our home page on the World Wide Web:
(<http://www.plu.edu>)

Office of Alumni and Parent Relations

1-800-ALUM-PLU
E-mail: alumni@plu.edu

Letters to the Editor

Your letters are welcome and should be addressed to Pacific Lutheran Scene Editor, PLU, Tacoma, Wash., 98447, faxed to 206-535-8331, or e-mailed to scene@plu.edu. Letters may be edited for clarity and length.

Non-discriminatory policy as to students

Pacific Lutheran University admits students of any race, color, sex, and national ethnic origin to all the rights, privileges, programs and activities generally accorded to or made available to students of the university. It does not discriminate on the basis of race, color, sex, or national or ethnic origin in administration of its educational policies, admissions policies, scholarship and loan programs and athletic or other school-administered programs.

NOTE:

Pacific Lutheran University, as with the rest of Pierce County, will soon have a new area code. On April 27, the area code will change to 253; all toll-free phone numbers will remain the same.

Master Health Care CHAOS

A Master of Science in Nursing degree from Pacific Lutheran University will help you gain the needed skills for today's fast-changing health care environment and advance your competencies in providing collaborative health care. We offer preparation for the roles of Care Manager (Health Systems or Client Systems) and Nurse Practitioner (Gerontology, Women's Healthcare or Family).

At Pacific Lutheran University, you will find a faculty who respect your clinical experience and classroom contributions. We understand the sacrifices you make to juggle career, family and school to meet your goals. PLU's established graduate program in nursing offers flexible scheduling, evening classes, financial aid and professionals eager to help you master health care chaos!

206/535-8872



SUMMER INSTITUTE of THEOLOGY

TRANSFORMATIONAL LEADERSHIP

The Role of Spirituality and Theological Reflection

July 13-17, 1997

Pacific Lutheran University
Tacoma, Washington

There is a renewed interest in spirituality. Many say that the church is in the process of transformation and rebirth. What kind of leaders will the church need for a new century? What is spiritual direction? What is Lutheran spirituality? Pastors and lay leaders are invited to explore different spiritual traditions and to reclaim the ancient art of theological reflection.

FACULTY

Patricia Killen, *Professor of Religion, Pacific Lutheran University*

Susan Nachtigal, *Professor of Education and Spirituality, Pacific Lutheran Theological Seminary, Berkeley*

Michael Foss, *Sr. Pastor, Prince of Peace, Burnsville, MN*

Allan Sager, *Director of Contextual Education, Trinity Seminary, Columbus, Ohio*

\$180 tuition (includes \$25 registration fee) for week long course. Room and board on campus available. For more information, contact Dr. Richard W. Rouse, Director, Office of Church Relations, Pacific Lutheran University, Tacoma, WA 98447. Phone: 206/535-7423. Fax: 206/535-8733. Visit our home page at <http://www.plu.edu>.

GEM scholarships offered by Lutheran Educational Network and Support (LENS). Sponsored in part with a grant from AAL.



PACIFIC LUTHERAN UNIVERSITY





December marked the five-year anniversary of the Board of Regents' announcement that Loren J. Anderson would be PLU's 12th president. In this issue of *Pacific Lutheran Scene*, we take a look at the many accomplishments of the past five years, and delve into the future.

Good News *and* Great Possibilities

BY LINDA ELLIOTT

S

he almost did a double take.

As a sophomore in 1992, Monica (Ricarte) Hurley was pleasantly surprised to see PLU's brand new president, Loren J. Anderson, jogging on campus one morning. She was also impressed by the fact that he walked through the UC regularly to chat with students and that he kept up with important issues such as the status of financial aid and quality of cafeteria food.

"I shouldn't have been surprised, one of the things we were looking for in a new president was someone who would be out and about and who would be interested in what happened to students on a day-to-day basis," said Hurley, who was on the presidential search committee in the early '90s. Hurley joined PLU's admissions department after graduating in 1994 and found Anderson was just as interested in the staff and faculty as he was the students.

"You never knew when he was going to walk in the door," she remembered with a laugh. "You could be sitting there with your feet up, writing letters to prospective students and he'd come right in with a question or with a person he thought we'd be interested in following up on."

Hurley, who now works with annual giving and development operations, thought a minute more. "He knows the... pulse of the student," she said, searching for the right words. "He's really concerned with what makes a university a university — and that's students — and the faculty, of course."

David Christian, PLU's director of engineering, agrees.

"He is very down to earth and really relates to those students," said Christian who — as a student for three years in the late '50s and as a PLU employee for an amazing 37 years — has seen his share of presidents come and go.

Christian said he was struck by how quickly Anderson blended in, and credited it to his "knowledge of the cultural language of a university." For instance, during his first year Anderson referred to himself as a freshman,



Loren and MaryAnn Anderson

The Anderson family — Loren, MaryAnn and Maren — has adjusted well to life at PLU and in the greater Tacoma community. In addition to the activities at PLU, all three of the Andersons find time to be involved in a number of community events.

Nine-year-old Maren is a fourth grader at the Annie Wright Middle School in Tacoma. She is a member of an Odyssey of the Mind team at her school, plays piano and soccer, and sings with the Tahoma Girls Choir and Trinity Lutheran Celebration Singers.

MaryAnn is a member of the executive committee of the Children's Museum of Tacoma and serves on the boards of the Tahoma Girls Choir and the Annie Wright Parents Association.

the second year a sophomore, and so on. Last year the Alumni Association presented the president with a class ring — a symbol of his "graduation" after four years.

That exceptional relational style, along with proven planning and team building qualities, were high on the board of regents' list of priorities when it hired Anderson five years ago. Board members were looking for someone with a strong sense of vision, mission and action. They found it in Anderson. In fact, they've been so impressed with his leadership ability and work ethic, that last year they renewed his five-year contract a year early.

"During my tenure as a member of the board of regents, Dr. Anderson's many talents and skills have become readily apparent," said Connye Hartman '63, a past Montana state senator and a regent since 1987.

"Dr. Anderson has a fine sense of interpersonal relationships and is an extraordinarily skilled administrator who delegates responsibilities well. Under his direction, the university's financial status has enjoyed a remarkable resurgence. He is highly respected among the faculty, alumni and students. His talents are recognized by his peers within and without the state." *continued next page*

Good News



LEFT: PLU students reach out to serve others through Habitat for Humanity. ABOVE: A Computer User Room replaces the UC bowling alley.

Anderson set high goals for himself and his staff. He instigated the completion of PLU's first comprehensive long-range plan, strengthened the university's financial base, helped map out an aggressive enrollment strategy, oversaw major curriculum changes in numerous areas, presided over the opening of a new music center, and issued a call for technology to play a stronger role on campus.

However, Anderson will be the first to tell you this isn't a one-person job.

He couldn't have done it without dynamic leadership from members of the President's Council, which include vice presidents Jan Brazzell, Bill Frame and Erv Severtson, Provost Paul Menzel, Dean of Admissions and Financial Aid Laura Polcyn, Director of Church Relations Rick Rouse, Assistant to the President Laura Majovski, and Director of Student Involvement and Leadership Programs and Student Activities Cristina Del Rosario.

"We have a strong leadership group, but way beyond that PLU is blessed with an incredibly gifted and dedicated faculty and staff," said Anderson. "The growth and well-being of our students is their primary focus and they regularly give service above and beyond the call of duty. They are the wellspring of PLU's excellence."

PLU 2000 — a Long-Range Plan

PLU 2000 — the university's long-range planning document — is a perfect example of everyone working toward a common goal. In the fall of 1992, a committee of faculty, staff and students was established to prepare a plan for the university that would ad-

"We have a strong leadership group, but way beyond that PLU is blessed with an incredibly gifted and dedicated faculty and staff."

LOREN J. ANDERSON



President's Council:

(FROM LEFT, BACK ROW)

Erv Severtson, Vice President and Dean of Student Life; Cristina Del Rosario, Director of Student Involvement and Leadership Programs and Student Activities; Loren Anderson, President; Laura Majovski, Assistant to the President; Paul Menzel, Provost.

(FROM LEFT, FRONT ROW)

Rick Rouse, Director of Church Relations; Jan Brazzell, Vice President of Development and University Relations; Bill Frame, Vice President of Finance and Operations; Laura Polcyn, Dean of Admissions and Financial Aid.

dress matters of institutional identity and priority.

Led by co-chairs Bill Frame, vice president for finance and operations, and Carolyn Schultz, professor of nursing, the PLU community engaged in hundreds of hours of discussion to determine what the university is today and what we want it to become. The final document was unveiled in January 1995.

PLU 2000 is, primarily, a statement of institutional vision and identity. Vision is found in a new goal statement, "PLU seeks

to empower students for lives of thoughtful inquiry, service, leadership and care — for other persons, for their community, and for the earth." Identity is addressed in five axioms:

- Strengthening the learning community
- Reaffirming the Lutheran tradition of higher education
- Emphasizing PLU's motto, "Educating for Lives of Service"
- Activating the commitment to diversity
- Supporting the enterprise

"PLU 2000 has become our core planning document," added Anderson. "Because it reflects an unusually high level of consensus about the university's future identity, it has become an effective guide for our daily work."

Focusing Academic Efforts

Though a long-range planning effort, PLU 2000 has provided for short-term planning as well. Among the issues needing immediate attention was the budget. PLU entered the '90s with fewer students than anticipated and found a need to trim the budget. However, rather than dwell on reducing costs in one area, or cutting expenses across the board, the administration decided to build on PLU's strengths.

Thus was born *Project Focus*. And, four years later, it has produced dramatic results. Faculty and academic leaders supported a strategic plan to close five programs as a means of "focusing" academic effort and resources. Extensive administrative reorganization facilitated gains in both effectiveness and

efficiency. Over \$3 million was saved for reallocation, and the university's employ was reduced by about 10 percent.

At the same time, additional resources were invested in instructional equipment, faculty and staff salaries, and in renovation and maintenance of facilities.

"The strength and courage of the PLU community has been evident throughout this period of economic recovery. All have been willing to sacrifice and, as a result, the university looks toward a very bright future," said Anderson.

The total impact of *Project Focus* is reflected in the bottom line of the university's budget. By the end of fiscal '93, PLU had accumulated an operating deficit of \$4.3 million. The university had planned to eliminate that deficit by the year 2000. However, an aggressive asset management strategy, an operating surplus and gifts designated for that purpose helped erase the deficit in fiscal '96 — four years ahead of schedule.

Kit Spicer, dean of the school of the arts and a communication professor at PLU since 1978, said the road hasn't been easy but he has appreciated Anderson's candor about the university's future.

"One of the things I've admired about President Anderson is his openness, his willingness to share with the entire PLU community. At the first faculty gathering (five years ago), and since then, he has been very candid with us about budgets and the financial state of the university. I find that refreshing and helpful for us to understand the bigger picture," he said.

Campaign Tops Goal

With an emphasis on endowment, PLU launched a five-year, \$52-million fundraising campaign called *Make a Lasting Difference* in 1992. Through extraordinary efforts on the part of key administrators, volunteers, the board of regents, alumni and others, the campaign has exceeded \$64 million. With the endowment now nearing \$25 million, PLU is more marketable among its peer institutions.

Other university accomplishments of the last five years include:

- A plan was developed to **build enrollment** by 10 percent, from 3,300 to 3,600, over a five-year period. At 3,481 students for the 1996-97 school year, the university is well on its way to reaching that goal.
- The staff in the areas of billing, financial aid and registration are currently streamlining those functions by creating "one-stop shopping" in a new combined **Student Services Center**. This effort is being evaluated and adapted to student needs even now to improve on the original idea and function of the center.
- PLU used to offer two student cafeterias, but closed one after research discovered the one on lower campus served only 20 percent of students yet used 50 percent of the **dining services** budget. PLU extended the hours of the main cafeteria on upper campus and remodeled the lower campus site into a late-night sandwich and pizza bistro. The move proved popular with students.
- Anderson was on hand in 1995 to dedicate Phase I (a music education wing and concert hall) of the new **Mary Baker Russell Music Center**. Thanks to the generosity of Mary Baker Russell and other key donors, construction begins this month on the completion phase of the building, which includes teaching studios and rehearsal and office space. The work should be completed by late 1997.
- All services and activities for international students and scholars, study abroad programs and on-campus academic international programs were brought under the **Center for International Programs** umbrella. A **Center for Public Service** was formed to accommodate volunteer and outreach opportunities.
- What was a decade ago a smoking lounge in the library is today a state-of-the-art **Language Resource Center** with computer-aided learning sites. The bowling alley of the '70s in the basement of the UC now sees popular use as a **computer user room** with both Mac and PC terminals.
- Classroom upgrades, residence hall renovations, a new track, swimming pool roof repair, the new Names Court basketball floor, landscaping, lighting and other **capital projects** have enhanced the quality of life at PLU.

Great Possibilities



The new campus physical master plan addresses the future use of Eastvold Chapel.

Even while pausing to celebrate the university's latest accomplishments, Anderson has his eye on the future. In addition to increasing enrollment and reducing expenses, several areas hold his attention — the development of an Academic Plan, a Campus Physical Master Plan, a Technology Plan and a Financial Plan.

The **Academic Plan** involves an effort to continually redefine PLU's academic mission. Two organizations, the Association of New American Colleges (ANAC), and the Pew Charitable Trust, will play roles in our conversations.

PLU recently joined ANAC, which is comprised of 21 colleges and universities across the country that are similar in size, structure and academic mission to PLU. New American universities are "dedicated to the integration of liberal and professional studies," and are considered somewhere in between a small liberal arts college and a large research university.

"The New American College has quickly become an important association for us," commented Anderson. "It helps capture our unique identity and build on our strengths in the company of a small group of like-minded institutions. It holds the promise of making us better."

The Pew Charitable Trust has for the past decade supported a national conversation (Pew Higher Education Roundtable) on the need for change in higher education. Under Pew's sponsorship, some 400 college and university leaders, including PLU, gathered in 1993 to discuss higher education reform. The conversation continued in 1996 with a much smaller group of 125 universities. PLU was one of only three colleges in the Northwest to participate in the latest round of reform talks.

Approved by the board of regents in January, the **Campus Physical Master Plan** seeks to guide the best use of our spaces. What should we do with Eastvold once the music offices move to the new music wing next November? Does PLU need a technology building? Should special landscaping projects be designed to link upper and lower campus? The plan, which was supplemented by several on-campus forums, addresses these and other questions of space as the conversations continue.

It is a well-known fact that our world is experiencing a technology tsunami with computers at the front of the wave. PLU's Technology Plan answers the basic questions, who needs what, when, where and why. By giving faculty and students more

computer access, we're raising the level of academic activity to better prepare today's students.

Anderson is acutely aware of the role computers and information technology will play on campus. He was the driving force behind creating a position for an executive director of information resources. The new director, Mary Ann Dase, oversees computing and telecommunications departments and the library and is charged with assessing PLU's technology needs.

Dase said she is excited about what the future holds at PLU.

"I have only been at PLU for nine months, but President Anderson has provided me with the opportunity to do some new and innovative projects," she said. "My first meetings with him were to give me a chance to understand what were the priorities for information resources from his position. Instead, what I found was a president who looks for the appropriate challenges facing education and seeks to find the appropriate ones for PLU.

"He is really creative and that makes my job easier," she added.

And, these three plans need to be placed in a funding cycle: this is the role of PLU's newly drafted Financial Plan.

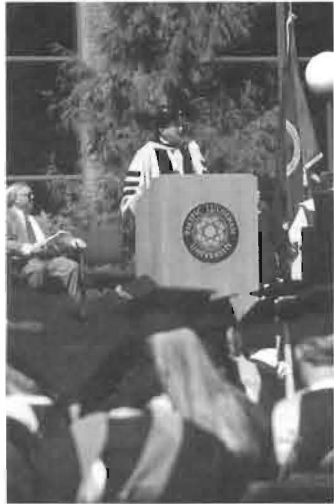
Higher Education Leadership in Washington State

The president is also deeply involved in the state Legislature's conversation about the role of private higher education, particularly the need to increase financial aid. He serves as vice chair of Washington Friends of Higher Education (an association of the 10 independent four-year universities in the state), and is also a board member of National Association of Independent Colleges and Universities, and next year will chair the Council of Independent Colleges of the ELCA.

Conclusion

"The future presents exciting opportunities," remarked Anderson with contagious enthusiasm. "We stand on the brink of a new millennium. Our campus was planted on tomorrow's world of the Pacific Rim, and this university can only flourish because of the dedication of a remarkable faculty and staff, and students who yearn to make a difference.

"God has blessed PLU beyond measure," he said. "And, 'To whom much has been given, much is expected.'"



First outdoor commencement, August 1996.

Highlights of the past five years

December 1991

Regents announce that Loren J. Anderson will become PLU's 12th president

March

History professor Chris Browning publishes "Ordinary Men," a book about the Holocaust

June

PLU launches the *Make a Lasting Difference* campaign; Endowment: \$8.2 million

September

Inauguration of President Anderson; Jan Brazzell is named Vice President of Development and University Relations

February

Bill Frame is named Vice President for Finance and Operations; *Project Focus* begins

May

Endowment: \$9.4 million

October

Faculty vote to retain Interim, renamed J-Term

February

PLU is hooked up to the Internet

May

Endowment: \$14.6 million

September

New core curriculum is implemented; Bistro (alternative student dining facility) opens

October

Andersons visit Norway, audience with King Harald and Queen Sonja

November

Vice President Al Gore visits campus in rally to support Congressman Mike Kreidler

October

King Harald and Queen Sonja visit campus, Queen Sonja receives honorary doctorate; PLU track is refurbished

May

Q Club begins 25th year; endowment: \$21.5 million

September

Student Services Center opens

January

Regents approve PLU 2000; PLU establishes home page on the World Wide Web; Computer User Room opens in former University Center bowling alley

February

Opening of Mary Baker Russell Music Center; Paul Menzel is named Provost

May

Endowment: \$17.4 million



CAMPAIGN DONORS

What follows is recognition of **Make A Lasting Difference** campaign donors based on the face value of their giving. Face value includes the current value of all future (deferred) commitments, as well as cash gifts and pledges.

LEGEND

H = Heritage Society

Q = Q Club

L = Lifetime Giving Society

* = This commitment includes a revocable future gift

(dec.) = recently deceased

"To err is human..." This campaign-to-date report is based on the information in our records as of December 31, 1996. We regret any omissions or errors, and would appreciate your notifying us of any problems by calling 1-800-258-6758.

Q Club

Q Club membership provides the core of scholarship support at PLU. With a minimum contribution of \$300 annually, one can join this gathering of dedicated friends whose mission is to provide assistance to deserving students as they prepare for lives of service through a Pacific Lutheran University education.

Heritage Society

Members of the Heritage Society are those individuals who have included Pacific Lutheran University in some type of deferred gift, bequest, charitable trust, revocable trust, charitable gift annuity, life insurance, pooled income fund agreement, or a gift of a residence or farm with retained life estate. Membership is not based on the amount of the deferred gift. The sole criterion is the remembrance of Pacific Lutheran University in one's estate planning.

Lifetime Giving Society

The Lifetime Giving Society recognizes an extraordinary group of donors who have given faithfully and consistently over time to sustain and support Pacific Lutheran University. Lifetime giving includes the total of recorded gifts and current pledges of cash, securities, real estate, and appreciated property, and includes the charitable value of irrevocable planned gifts. These totals do not include revocable deferred gifts or gifts to KPLU.

\$1,000,000 AND ABOVE

1 Anonymous
Gerald and Linda Evanson L,H,Q,*
Arthur and Jennie Hansen L,H,Q,*
Kenneth and Joyce Hartvigson, Jr. L,H,Q,*
Richard and Connie Hildahl L,H,*
Estate of Erna Jorgensen L
James and Karen Lincoln H,*
Donald and Wanda Morken L,H,Q,*
Estate of Edward Ramsdale L
William and Janet Rogers H,*
Mary B. Russell L, H
Rikka and Eric Stewart H,Q,*
Donald and Edith Strandness L,H,Q,*

\$500,000 TO \$999,999

1 Anonymous
Gary and Sylvia Baughn L,H,Q,*
O. Jurgis Bendikas L,H,Q
Lawrence and Kimberlea Green L,Q,*
Independent Colleges of Washington Ty (dec.) and Anne Long L,H,Q,*
Lutheran Brotherhood L
Mentor Graphics Corporation L
Microsoft Corporation L
Richard and Marcia Moe L,H,Q,*
Scott and Evelyn Names L,Q
Larry Neeb L,H,Q,*
Russell D. Nelson Trust L
John and Shirley Oakley L,H,Q,*
Knut Olson and Kimberly Morter-Olson H,Q,*
Betty Svare Parrott H,*
Estate of Rena V. Pellegrini L
Richard Svare H,Q,*

MAKE A LASTING DIFFERENCE campaign races to the finish line

With just weeks to go before the five-year \$52 million campaign celebrates its conclusion, we pause to look at the difference your contributions have made for PLU.



A student helping students

Student, Choir of the West member, student government member, cultural peer coordinator for Native Americans and volunteer for other organizations on campus. These are just some of the many hats Nathan Sears '97 wears with pride at PLU.



Nate Sears '97 was the manager of the student-run eatery, The Cave.

In the last year, Sears has given another part of himself to PLU by joining Q Club as a student member. "Donating to Q Club is creating a small yet important beacon of support on the shores of PLU's educational process," Sears said enthusiastically.

"My first roommate received a Q Club scholarship. It sparked my curiosity about getting involved and donating," Sears said. "Though I knew little about the organization to begin with, when Q Club was mentioned around campus, it carried a special prestige. Fortunately, it didn't take much research to realize that this was something I needed to get involved with. So I became a student member of Q Club in 1996."

Why does Sears — a student — give to Q Club?

First, he said, it is an important way of showing his commitment to PLU. Second, by beginning to give now, he more than likely will continue to give in the future. "It is an important way to pace myself and know that I can budget this yearly," Sears said. Finally, giving to Q Club is a nice way of showing support for students in need. "I hope to help provide an opportunity for other students," he said.

Offner offers gift of service

In her 24 years in PLU's mail-room, Dona Offner saw countless Q Club mailings. She herself joined in 1993.

"I wished all along that I could become a member to help students," she confessed.

Offner has worked with quite a number of students and staff over the years. She has enjoyed the experiences and been positively affected by those encounters over the years. "I've always enjoyed the students here at PLU," she said. "I've had first-hand experience with the quality students at PLU while working in the mailroom. They were hard-working, conscientious and responsible," she added.

"There are a lot of talented students and I wanted to do what I could to help individuals that otherwise may not have been able to attend PLU." Offner continued, "Q Club is a wonderful thing to donate to.... I don't know what better cause to give to."



Dona Offner delivers mail around campus.

A husband's love inspires nursing scholarship

For 51 years they shared life's sunrises and sunsets. When Naydene Snodgrass died last August, her husband Harold chose to honor her memory in a special, lasting way. He established the Naydene A. Snodgrass Memorial Scholarship for nursing students.



PLU nursing students will benefit from the new scholarship.

Naydene was a nurse whose care for her patients will live on through others. Harold's gift will extend the healing arts through PLU nursing students who, according to Naydene, were some of the finest nurses she worked with during her career.

Naydene graduated as a registered nurse from Tacoma General's program in 1947 and served at Good Samaritan Hospital in Puyallup, Wash., and Tacoma General and Puget Sound Hospital in Tacoma. She was a school nurse for the Puyallup School District in the 1950s and 1960s.

Harold established the scholarship, and has set into motion plans to endow the scholarship in perpetuity, with the intent of providing full tuition to a nursing student with financial need. Though none of their family graduated from PLU and their time on campus was quite limited, Harold chose PLU to receive this gift because Naydene always commented on how impressed she was by the PLU nursing students. Her own school at Tacoma General was closed many years ago.

Now retired, Harold taught English and journalism at Wapato and Puyallup high schools and was director of public relations for the Tacoma School District for more than 20 years.

Q Club banquet celebrates 25 years, campaign success

A festive birthday party with all the trimmings will mark the 25th annual Q Club banquet on Saturday, May 3.

"It promises to be different from any other banquet we've planned," said Lauralee Hagen, chair of the Q Club banquet committee.

Campaign accomplishments will be chronicled in a video and new members to the Lifetime Giving Society will be inducted, "as well as a number of surprises we think Q Club members will enjoy," said Hagen.

To join Q Club and be a part of the festivities, call Dave Berntsen at 1-800-258-6758.

Groundbreaking commences music center completion



David Benson '94, Jane Russell and Darren Kerbs '96 watch as Mary Baker Russell breaks ground for the \$3 million addition to the music center bearing her name.

While the Dec. 14 winter commencement ceremony marked a new beginning for 331 PLU graduates, it also was a day of new beginnings for the Mary Baker Russell Music Center with the groundbreaking of the center's expansion. More than 100 people, including grateful music faculty and students, celebrated the start of the building's completion.

A major and unexpected gift from Mary Baker Russell in November provided funds for Phase II of the building bearing her name, including the addition of teaching studios, practice rooms, rehearsal halls and office space. Construction began in February with completion targeted for November.

New pipe organ is one of region's largest



One of the largest pipe organs on the West Coast has been installed at PLU in the Mary Baker Russell Music Center's George Lagerquist Concert Hall.

The Gottfried and Mary Fuchs Organ was inspired by the late 17th-century Stollwagen organ of Stralsund, Germany. The instrument will boast 54 stops and approximately 3,000 pipes, some as tall as 16 feet. The casework is made of oiled fir. The pipe organ weighs more than 19,000 pounds, and stretches from the balcony to the ceiling of the concert hall. Its frame is so large that it completely encases the organist, who literally sits inside the organ to play it.

The four-story-high organ features delicate, rounded carvings by Judy Fritts, sister of the organ builder, Paul Fritts. Their father, Byard Fritts, was a PLU music faculty member from 1949-1966 and the university's organist for 30 years.

The \$920,000 project received a \$300,000 naming gift from the Gottfried and Mary Fuchs Foundation for capstone funding. Other lead financial gifts came from friends and alumni, including Jeffrey and Patricia Smith, Mary Baker Russell, George and Jane Russell, Tom and Kay Anderson, the late Julian Foss and David Dahl (PLU music professor and organist).

The Gottfried and Mary Fuchs Foundation was created in 1960 to support charitable, educational, scientific, literary or religious purposes primarily within Tacoma, Pierce County and the lower Puget Sound area.

Memorial lecture explores the right to die

Heather Koller '94 was a philosophy major and an English minor who aspired to a career as a writer. She served PLU as a student government senator and was recognized as a Sankta Lucia bride. Heather died of connective tissue cancer a month after her graduation, a source of pain she had bravely fought through her college career. In her honor, her parents, Brant and Carol Koller, and her sister, Jennifer Bain, established a memorial lecture. The annual lecture focuses on creative writing or ethics, Heather's special interests.



Dax Cowart and Robert Burt

The first of these memorial lectures was held in November, and brought Dax Cowart and Robert Burt to PLU. Cowart was blinded, maimed and disfigured in a propane gas explosion that burned more than two-thirds of his body. He suffered excruciating pain and begged doctors to let him die, but was refused. Now a lawyer, Cowart lives in reasonable comfort, but still argues he should have been allowed to die. Burt, scholar of health care ethics at Yale Law School, believes the doctors were right to reject Cowart's demands to die.

While they had discussed these issues through phone calls and correspondence in the past, Burt and Cowart met face-to-face for the first time to hold a "public conversation" about when and how to let patients make the choice to die. The lecture packed Chris Knutzen Hall with members of the PLU community, as well as local nurses, doctors and others interested in Cowart's case.

Through the lecture, the audience was able to consider both Burt's and Cowart's concerns and then ask questions, exploring such topics as pain management, the state of health care, how long to challenge a severely-hurt patient's wish to die, and society's views of the disabled.

Culpeper Foundation sponsors language learning center

Bienvenidos!
Velkommen!
Welcome! PLU's new Language Resource Center officially opened its doors in January. The center is located in the Mortvedt Library, and works in conjunction with media services to provide a space for language aficionados to learn. The main room of the center features 19 computer work stations where students can use programs to practice their language skills. The programs allow visitors to explore the virtual world of Paris or read Chinese poetry. Through the use of the center's home page on the World Wide Web, students can access German newspapers, Norwegian history and sign language tutor programs. The center also has several VCRs, laser disc players and CD/cassette players along with a smaller multimedia classroom for individual and class use. The equipment in the new center was funded by the Charles E. Culpeper Foundation.



Regents Anne Long, Otto Stevens and Jon Olson (SEATED) explore one of the language and culture programs in the new Language Resource Center.

The Language Resource Center also serves as an art gallery, featuring the works of a local artist each semester. Decorating the center's walls this spring are seven paintings by former PLU art instructor Becky Frehse. The paintings are reflections of her nine-month stay in China.

\$250,000 TO \$499,999

3 Anonymous
Rodney and Suzanne Albertson L,H
John and Mildred Dean L,H
Mark and Kathleen DesVoigne H,*
Richard and Leila Ellingson L,H
Evangelical Lutheran Church in America
George and Carlotta Flink H,Q,*
The Gottfried and Mary Fuchs Foundation L,Q
Theodore and Doreen Johnson L,H,Q,*
Gordon and Alice Kayser L,H,Q,*
Victor and Margaret Knutzen L,H,Q,*
The Kresge Foundation L
William and Michelle Krippaehne, Jr. L,H,Q,*
Jon H. Kvinsland L,H,Q,*
Estate of Thea La Ville L
The Lagerquist Family L,Q
The Glenn Lee Family L
Kimberly T. Mooneyham H,*
M.J. Murdock Charitable Trust L
Marvin Pennington H,*
Melville and Dorothy Rue H,*
George and Jane Russell L,Q
Harold R. Snodgrass L,H,*
Scott and Sherith Squires H,*
John Weswig and Janis Bradford H,*
Donald and Kim Wilson L,H,Q,*

\$100,000 TO \$249,999

2 Anonymous
ALTERA Corporation L
Aid Association for Lutherans L
Allenmore Medical Foundation L,Q
Charles Anderson L,Q
David and Lynne Bangsund L,H,Q,*
Brian Berg and Joyce Avery L,H,Q,*
The Boeing Company L
Ed and Angela Brannfors L,H,Q,*
Paul and Leslie Brantner H,*
Jennifer Meyer Brown and Jeffrey Brown H,Q,*
Charles E. Culpeper Foundation L
Ben B. Cheney Foundation L,Q
Estate of Walter Christensen L
W. Powell Cone L,H,*
Gregory Ennis H,Q,*
Gerald and Grace Faaren L,H,Q,*
Phylaine Folsom L,H
Maria Hageness L
Mrs. Frank Haley L,H,Q
IBM International Foundation L
Frank and Sandra Jennings L,H,Q,*
Bertil and Pearl Johnson L
Wilbert and Jeanette Koch L,H,Q,*
Ben A. and Annie McCracken L,H
Estate of Harold and Sylvia Nelson L
Burton and Jean Nesset L,H,Q,*
Ellis and Patricia Odberg L,H,Q,*
Mark and Laura Polcyn H,Q,*
William and Doris Rea L,Q
Kerstin Ringdahl H,Q,*
Beatrice L. Scheele L,H,Q,*
Randal and Ila Shipley H,Q,*
Estate of Margaret Shipley L
The Steele-Reese Foundation L
Doris G. Stucke L,H,Q
Estate of Doris and Leon Titus L
Arthur and Betty Vingerud L,H

\$50,000 TO \$99,999

2 Anonymous
Daniel and Anne Alsaker L,H,Q,*
Ameritech Library Services L
Estate of Hazel Anderson L
Loren J. and MaryAnn Anderson L,H,Q,*
Thomas and Kathryn Anderson L,Q
Jerry and Elaine Armstrong L
Virginia Benson L,H,*
David and Carolee Berntsen L,H,Q,*
Marvin and Beverlee Bolland L,H,Q,*
Estate of Vanda Bortell L
Bulend and Rebecca Burad L,H,Q,*
Estate of Mary Burchak L
Beth Davis H,Q,*
First Interstate Bank and Foundation L
Estate of Jeanette Fowler
Norman and Jackie Hagen L,H
Thomas and Tyne Haukebo Q,*
Curt and Nola Hovland L,H,Q,*
Robert and Marjorie Howard L,H,Q,*
Herbert B. Jones Foundation L
Estate of Theodore O.H. and Elizabeth Karl
KeyBank L
William Kilworth Foundation L
Einer (dec.) and Ruby Knutzen L,Q
Kon Tiki Museum L
Harry Lang L,H,Q
Edgar and Betty Larson L,H,Q,*
Richard and Kathleen Mueller L,Q
PLU Women's Club L,Q
Estate of Mars and Verna Rolfsen L
M. Sterling and Inga Rygg L,H,Q
Southwestern Washington Synod, ELCA L
Estate of Astrid and William Stancer L
Otto and Shirley Stevens L,H,Q,*
Thomas and Lorraine Thompson L
Clifford and Ronni Tvedten L
Christy Uilleland L,H,Q,*
Union Pacific Foundation L
Doc and Lucille Weathers Trust L

continued next page

Faculty members and hands-on equipment make the difference for science grads

Biotechnology opens the door on tomorrow's scientific discoveries. For some, tomorrow is already here.

PLU alumnus Neil Kelleher '92, now completing his Ph.D. at Cornell University, conducts cutting-edge research that significantly affects others' work in biotechnology. As an undergraduate he worked side-by-side with his chemistry professor Craig Fryhle on molecular probes to better understand enzymes. His work helped him earn a Fulbright Scholarship to do research at the University of Konstanz in Germany right after his PLU graduation.

Foundation will add \$250,000 for this purpose, thus ensuring future generations of undergraduate students access to advanced scientific equipment. The Kresge Foundation has already given PLU \$250,000 to purchase state-of-the-art computer equipment and the means to electronically link science classrooms and labs.

Your cash gifts and pledges to the Science Equipment Endowment Challenge (SEEC) can be paid over a five-year period (until May 31, 2001).

Call Faye Anderson at 1-800-826-0035 for more information.

"I decided to co-chair this important effort because I believe in the enormous need for science equipment in perpetuity. I made my gift because of the enormous gift PLU gave me when I was an undergraduate. I think it is our responsibility to treat the next generation of scientists with the same - if not better - opportunities we had." JERRY ARMSTRONG '60



Sheri Tonn, dean of natural sciences, demonstrates a computer modeling function to Neil Kelleher '92.

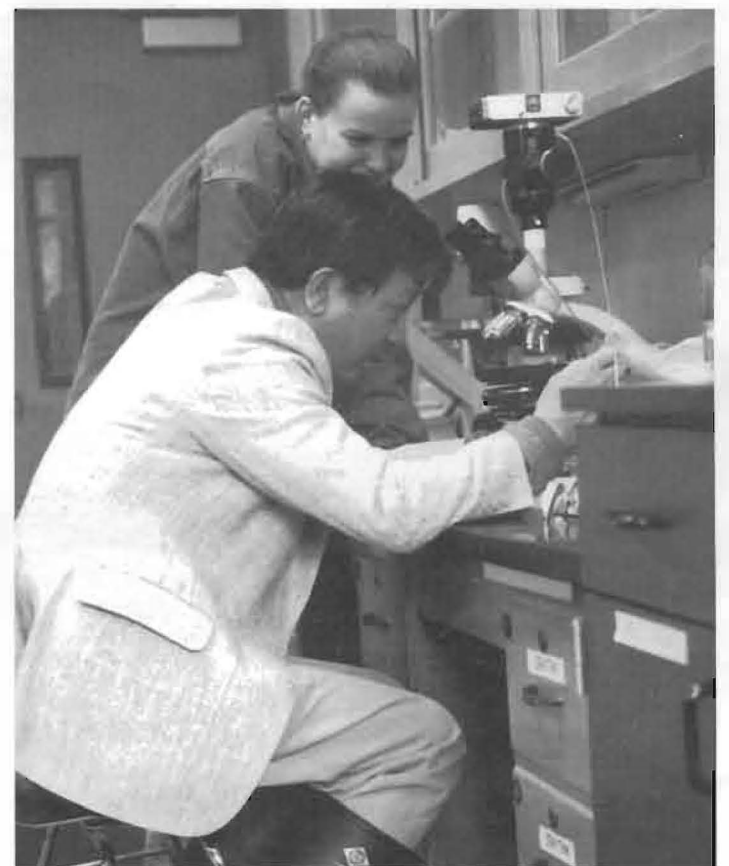
One out of nine women will be diagnosed with breast cancer. Think about that statistic for a moment. Counting all of your aunts, nieces, daughters, cousins, your mom and, for many of you, your wife — how many women are in your family? Chances are good that breast cancer will strike close to home.

Jennifer Specht Brannfors '94 started her cancer research on mussels with Professor Arthur Gee and, together, they published their findings in "Molecular Marine Biology and Biotechnologies." After her PLU graduation, Jennifer had completed two years of medical school when she was awarded a Howard Hughes Fellowship to the National Institutes of Health. She has taken a leave of absence from school to conduct breast cancer research with Dr. Steven Rosenberg, chief of surgery at NIH.

These two alums, and many like them, explored their scientific interests as undergraduates at PLU. With faculty mentors. On advanced scientific equipment.

Now, thanks to a challenge grant from the Kresge Foundation, you can help **Make a Lasting Difference** for students like Neil and Jennifer, whose work in turn makes a difference in the world.

It works like this: If you can help us raise \$1 million for the Science Equipment Endowment by Nov. 1, 1997, the Kresge



Professor Art Gee and student Gretchen Dubeck perform marine biology research.

Campaign Accomplishments

Take a look at just some of the things you've helped us accomplish during the five-year **Make a Lasting Difference** campaign:

- ◆ Tripled PLU's endowment from \$8 million in 1992 to more than \$24 million today
- ◆ Created 950 annual Q Club scholarships
- ◆ Set into motion three endowed chairs for Scandinavian studies, biology and education
- ◆ Completed and furnished the Mary Baker Russell Music Center, including the Lagerquist Concert Hall and Gottfried and Mary Fuchs Organ
- ◆ Established 100 new named endowed scholarships and program endowments
- ◆ Renovated residence halls (Kreidler, Tingelstad, Hong) and athletic facilities (swimming pool, basketball court, track, turf room)

Natural sciences serves as Murdock host

The division of natural sciences at PLU hosted the Murdock Undergraduate Research Conference in Rieke Science Center on Nov. 15 and 16. About 325 people from 23 colleges, universities and the Murdock trust attended, displaying 127 research posters explaining various scientific concepts. The M.J. Murdock Charitable Trust supports PLU in several ways: it provides stipends for students and faculty for summer research, helps fund equipment through the College Science Research Program, and helps fund high school teachers to do research with PLU faculty members.

\$25,000 TO \$49,999

2 Anonymous
 Albina Fuel L
 Jimmie Alford L,H,Q,*
 B. Eldon and Marjory Anderson L,Q
 Algot Andreasson Trust L
 Neal and Joyce Atntson L,Q
 David G. Aubrey H,Q,*
 Ronald Barensten H,*
 Paul and Margaret Benton L,Q
 Richard and Olive (dec.) Blandau L,H,Q
 Jan Brazzell and Wolfgang Opitz L,H,Q,*
 Neil and Mary Bryant L,H,Q,*
 Erhardt and Virginia Buchfinck L,H,Q
 Ernest and Ruth Collard L,H,Q,*
 Paul Collard H,*
 J. Walter and Clara Davis L,H,Q
 Judd and Nancy Doughty H,Q,*
 Eastern Washington and Idaho Synod, ELCA L
 John and Virginia Edlund L,H,Q,*
 F. Talmage and Mary Edman L,H,Q,*
 W. Larry and Janice Eichler L,Q
 Guy and Brenda Ellison H,Q,*
 Carl and Marilyn Erickson L,H
 Fisher Broadcasting Inc. L
 Estate of Julian Foss L
 Estate of Martha Fox L
 James and Judith Gates L,Q
 Roger and Martha Gebhard L,Q
 John M. Gilbertson Trust L
 Edna Gordner L
 Gene and Esther Grant L,Q
 Ronald and Melissa Grewenow L,H,Q
 Ernest Gulsrud L,H
 Estate of Muriel Gulsrud L
 Roe and Beverly Hatlen L,H,Q
 J. Reynold (dec.) and Nordis Jacobson L,H
 Lyle (dec.) and Iris Jacobson L,H,Q
 R. James Lane L
 Lutheran Brotherhood, Seattle Agency L
 Peter and Joan Mattich L,H,Q,*
 Inez Mattison Trust L
 Al and Georgia Meier L,Q
 Montana Synod, ELCA L
 Donald and Beret Mott L,Q
 Joan Scheele Mueller L,Q
 Estate of Lorena Nitz
 William and Jayne Nitz H,Q,*
 Northwest Washington Synod, ELCA L
 Jon and Carol Olson L,H,Q,*
 Oregon Synod, ELCA L
 Orion Laboratories L
 Susan Parr L,H
 Thomas Payne and Alexia Eide-Payne L,Q
 Janet Prichard H,Q,*
 Elmer and Mary Louise Rasmuson L
 Donald and Janet Reiman L,H,Q,*
 Barry and Carole Ann Rogge H,Q,*
 Wayne and Sheryl Saverud H,Q,*
 Del and Afton Schafer L,Q
 Eunice Schleicher L,H,Q,*
 Maurice and Lois Schwartz L
 S. Erving and Nancy Severtson L,H,Q,*
 Jeffrey and Patricia Smith L
 Anne E. Snow Foundation Inc. L
 Jeffrey and Kathy Spere L,H,Q,*
 Ethel Squires L,Q
 Geraldine Strege L,H
 Estate of Helen Tengesdal L
 Everett Thykeson L
 James and Charmian VanBeek L,H,Q,*
 Weyerhaeuser Company Foundation L
 Donald and Virginia Wick L,Q
 Matt and Norma Wilson L,Q

\$10,000 TO \$24,999

6 Anonymous
 Alaska Synod, ELCA L
 Faye Anderson H,Q,*
 John and Ruth Anderson L,Q
 Tom and Juli Anderson L,Q
 Autodesk Inc. L
 Cliff and Leona Bangsund L
 Estate of Inez Barton L
 David and Linda BeMiller L,H,Q,*
 Gerald and Sharon Benson L,H,Q,*
 Richard Bilbrough L
 Burrill (dec.) and Myrtle Bresemann H,*
 J. A. and Judy Bricker L,Q
 Stanley and Terry Brue L
 Thomas Carlson H,Q,*
 Cashmere Valley Bank L
 Central Lutheran Church, Anchorage L,Q
 Central Lutheran Church, Eugene L
 Mr. and Mrs. Pak Joe Chan L
 Ken and Polly Christopherson L,Q
 Roger and Deane Claridge L
 David P. Dahl L,Q
 Gary and Doralee Dahlke H,*
 Val and Alice Danielson L,Q
 George (dec.) and Mary Davis L,Q
 Virginia Davis-Johnson L,Q
 Harold (dec.) and Frances Dawson L,Q
 Delta Air Lines Foundation L
 Dexter Corporation Foundation L
 Jerome and Shari Donahe L,H,Q
 Ronald and Margaret Douglass L,Q
 Estate of Inez Eckblad L
 Eddie Bauer Inc. L
 Terry Edwards and Cynthia Wilson-Edwards L,Q
 David Ericksen L
 Ernst & Young LLP L
 Ella Mae Fenn L,Q
 Jerry and Janet Flodin L
 William and Anne Frame L,Q
 Kent Gerlach H,Q,*
 H. Warren and Gerry Ghormley L,Q
 Ron and Ingrid Gintz L,H,Q
 Greater Tacoma Community Foundation L
 Michael and Mary Kay Hallman L,Q
 Marv and Dorothy Harshman L,Q
 Paul Hartman L,H,*
 Hewlett-Packard Company L
 Bruce and Yvonne Hille H,*

continued next page

A special thanks to those who helped lead the way

Some people really make a lasting difference. Here's a look at some of the major campaign leaders who were a part of the National Campaign Cabinet.

CHAIR

Donald Morken '60



Don Morken has provided outstanding campaign leadership. His organization, enthusiasm and generosity are inspirational. For Don, it is a way to say thank you to a university, and one professor in particular, who helped him chart a successful life. He and his wife, Wanda, have encouraged others' giving through Q Club challenge gifts; the Morkens give at the highest Q Club level; they established the Donald and Wanda Morken Family Endowed Scholarship; they co-endowed the Raphael Lemkin Prize for an annual essay competition about genocide; and they documented a sizable deferred commitment. And, they have entrusted the university with the education of their daughter, Sonya. She is currently earning an MBA at PLU.

HONORARY CO-CHAIRS

Thomas and Kay Anderson



Tom, retired co-founder of Concrete Technology Inc., and Kay were charter Q Club members and Tom is past-chair of the board of regents. The Andersons are Senior Fellows of Q Club and significant contributors to the Gottfried and Mary Fuchs Organ.

Arthur and Jennie '34 Hansen



Jennie is a '34 alum and a retired teacher, and Arthur is the retired founder of A.H. Hansen Sales Ltd., a food services and distribution company in Hawaii. The Hansens have provided enormous leadership and inspiration, and have established the Jennie Lee Hansen Scholarship at PLU.

Gordon and Alice Kayser



Gordon is a retired mechanical engineer and computer consultant, and Alice is a former nurse. One of the many things they have done for PLU was to establish the Phillip G. and Alice L. Kayser Endowed Scholarship, given to PLU students in engineering or nursing.

George Lagerquist



George is the president of GALCO International Trading Co., a lumber and plywood shipping company. The former PLU regent has given to PLU in many ways, most notably through the concert hall that bears his name and the funding of the Chihuly glass sculpture for the Mary Baker Russell Music Center.

Mary Baker Russell



Mary Baker Russell has found a special place in the hearts of student performers and audience members alike. Her charismatic charm is matched only by her love for PLU students, whom she considers her own. Her leadership gift to both Phase I and Phase II of the Mary Baker Russell Music Center ensures a grand facility for the art of music making for generations to come.

VICE CHAIRS

Gerry '63 and Linda '61 Evanson



Linda, a regent, and Gerry established an endowed scholarship for education students. They, like Don and Wanda Morken, gifted the university with their daughter. Leigh Ann graduated in 1992 and now serves in the Peace Corps in Central Africa.

John '68 and Shirley '69 Oakley



John, a regent, and Shirley are Senior Fellows of Q Club, and received a Mentor Award at the 1995 Q Club Fellows banquet. They live in Mill Creek, Wash., and have three children. Son John is a '94 PLU graduate.

Joyce and Kenneth "Skip" Hartvigson, Jr., both '65 alums



Ken, a regent, and Joyce have provided a deferred gift to establish the Haavik-Hartvigson Endowed Chair in Education. They live in Seattle, and have two children. Brett '92 and Koll '93 are both PLU alums.

AT-LARGE CABINET MEMBERS

Frank and Sandra '83 Jennings



Frank, chair of PLU's board of regents, and Sandra have given not only financial gifts to PLU, but the gifts of time and talent. As a small example, Frank's thoughtful commencement and convocation greetings offer treasured pearls of wisdom for students, families, faculty and staff.

William and Michelle '74 Krippaehne



Bill, a regent, and Michelle are Q Club Fellows and members of the Heritage Society. The couple lives in Seattle with their four children.

Jane and George Russell



Jane, a regent, and George have established the Frank Russell Company Endowed Business Scholarship, donated significantly to the music center named after George's mother, Mary Baker Russell, and helped fund the Gottfried and Mary Fuchs Organ.

Carolie Smith '71



Not only do Carolie and her husband, Dick, contribute at the Fellows level of Q Club, but Carolie manages to give the gift of time as well. She co-teaches graduate and undergraduate finance courses at PLU.

David '56 and Elisabeth '57 Wold



David, former chair of the board of regents, and Elisabeth are Senior Fellows in Q Club and members of the Lifetime Giving Society. David is bishop of the Southwestern Washington Synod of the ELCA and Elisabeth serves as vice-chair of the Good Samaritan Hospital board of directors. Their four daughters — Karen '81, Kathryn '83, Kristen '86 and Heidi '87 — graduated from PLU.

\$10,000 to \$24,999 continued

Hoechst Celanese Foundation L
Paul and Vesta Heglund L,Q
Glen and Tacy Huffman L,Q
Linda Hulbert H,Q,*
Ken and Irene Hultgren L,H,Q
Clem and Phyllis Hunter L,H
James and Debbie Hushagen L,Q
Bill and Betty Hyde L,Q
Charles and Otis Hyde L,Q
JCPenney Company Fund L
Howard Jensen L,H
Jeffrey and Katherine Johnson H,Q,*
Marguerite Johnson L,H,Q,*
Richard and Joanne Klein L,Q
Melvin and Melba Knudson H,*
Robert and Shirley Kramer H,*
Eloise Lanning L
Lanoga Corporation L
Margaret Larson L
Paul and Nina A. Larson L,H,Q,*
J. Hans (dec.) and Thelma Lehmann L
John and Marion Liming L,Q
W.H. and Isabel Lindberg Trusts L
Bruce Littman L
Kenneth Lo H,Q,*
Richard and Anita Londgren L,Q
Robert and Susan Long L,Q
Long Painting Company L,Q
Arthur Martinez III L
Kurtis and Pam Mayer L
Wallace and Joan McKinney L,Q
Paul Menzel and Susan Blank L,Q
Jerrold and Karen Merchant L
Mountain View Funeral Home and Memorial Park L,Q
Harvey and Carol Neufeld L,H,Q
Estate of Sue Nilsson L
Linda Nelson Olson L
Robert and Myrtle Parker H
William C. Parrish L,H,*
Eleanor Peterson
Estate of Ray Petry L
James and Karen Hille Phillips L,H,Q
Erik Bill and Louise Pihl L,H,Q
Presser Foundation L
Virginia Prochnow L,Q
Robert and Janice Kay Quello H,Q,*
Janet Radford H,Q,*
Estate of Effie Ramstad L
Michael and Judi Rash H,*
Gilbert and Georgine Roller H,Q,*
Roman Meal Company L,Q
Richard and Susan Rouse H,Q,*
Alan and Pamela Russell L,Q
Frank Russell Company L
Roger and Gerry Anne Sahlin L,Q
Scandinavian Airlines System, Inc. L
David and Christelle Schoening L,Q
L. Jerald Sheffels L,Q
Orville and Margaret Siegel H,*
Jeffrey Soine L
David and Lorilee Steen L,H,*
Lynn and Ariadne Stein L,H,Q,*
Marcus and Corinne Stuen L,Q
Robert and Clara Swanson L,H,Q
Tacoma Rainiers Community Fund L
Kent and Jeanine TeKrony L,Q
Ronald and Eileen Tellefson L,H,Q
John Templin H,Q,*
3M Foundation L
Gertrude Tingelstad L,H,Q
Jeffrey and Sheri Tonn L,H,Q
Estate of Evelyn Torvend L
Tucci & Sons, Inc. L,Q
U S WEST Foundation L
Phyllis Ufer H,Q,*
John and Marian Veld, Jr. H,*
George and Karen Vigeland L,Q
Roy (dec.) and Gloria Virak L,Q
David Waggoner L,H
Luther and Isabel Watness L,H,Q,*
George (dec.) and Enid Webber H,*
Western Washington Fair Association L,Q
C. Davis and Annette Weyerhaeuser L,Q
Philip and Bonnie Wigen L,G
Wilson Construction Company L
David and Elisabeth Wold L,H,Q
Woodworth and Company, Inc. L,Q
Craig Wright and Ruth Fischer-Wright H,Q,*
Xilinx L
Zion Lutheran Church, Kent L,Q
Dwight and Emilie Zulauf L,Q

\$5,000 TO \$9,999

6 Anonymous
ARACOR
Absher Construction Company L,Q
Neal and Laverne Amend L,Q
American Lutheran Church, Billings Q
Estate of Dorothy Anderson L
Lowell and JoMarie Anderson L
James and Linda Arbaugh H,*
Arthur Andersen & Company, S.C. Foundation L
Alfred E. and Esther Westby Aus L,Q
Elbert (dec.) and Janice Baker L
Paul M. Bellamy Foundation, L,Q
Carl and Myra Bennett L,H,Q
Dale and Jolita Benson L,Q
Bethlehem Lutheran Church, Kalispell L
Morris and Doris Bohman L,Q
Norma Borgford L,H,Q
Samuel and Nathalie Brown L,Q
David Brusco
John and Luella Bustad L,H,Q
Keith and Marlene Canton Q
Paul and Mary Lou Carlson L,Q
Bob and Phyllis Carroll L,H,Q
Catalyst Cruise Line Ltd. Q
Christ Lutheran Church, Tacoma L,Q
David and Anita Christian L,Q
David and Nancy Colton L,Q
Donald and Maxine Cornell L,Q
Cornelsen Charitable Foundation
Cross of Christ Lutheran Church, Bellevue L,Q
E. Fred and Ann Deal L,Q

Q Club names new president



The capable hands of Ingrid Gintz '70 now hold the responsibility of president of Q Club for a two-year term. As president, Gintz will lead Q Club's 19 directors in a mission to provide financial assistance to deserving PLU students. Last year the group donated more than \$1.25 million for 950 student scholarships ranging from \$500 to \$8,000.

Gintz accepts the position with nearly two decades of Q Club experience. She and her husband, Ron '70, have been active members since 1980. They also serve as regional co-chairs on the National Campaign Cabinet of the **Make a Lasting Difference** campaign.

Outside of her work with PLU, Gintz is the career services manager at Highline Community College in Des Moines, Wash.

She has also taught math classes, from beginning algebra to calculus, at Highline, PLU and Fife High School. Gintz and her husband also provide a home for boys who have struggled with problems such as drug addiction, anger management, conflict with their own parents and failure in school. Presently, six boys ages 16-18 live in their home in Federal Way.

Gintz is also part of three generations of Lutes. Her father, Richard Knutzen, graduated from PLU in 1955, and her son, Mike, graduated in December.

Ingird shares our thanks to former president Larry Green '76 for his three years of outstanding service as her predecessor.

\$5,000 to \$9,999 continued

E.J. De La Rosa & Company, Inc. Educational Service District 113
 Gordon and Ethel Eide L,Q
 Iver and Camille Eliason L,Q
 Stephen and Dianne Ellis Q
 Bracy Elton
 Emmanuel Lutheran Church, Walla Walla L,Q
 Laurence and Margaret Ensor Farmers Group, Inc. L,Q
 Janet Fesq Q
 James and Sharon Finley Q
 John and Katherine Finstuen H,Q,*
 First Lutheran Church, Ketchikan L,Q
 David and Irene Fisher L,Q
 George (dec.) and Betty Fisher Q
 Foundation Northwest
 Estate of Olaf Gaastjion L,Q
 George and Carolyn Galloway L,H,Q
 Ralph Gehrke L,H
 Richard and Cherie Gesinger L,Q
 William and Phyllis Ridge Gill
 Estate of Lucille Giroux L,Q
 Clarence and Adele Glenn
 Good Shepherd Lutheran Church, Olympia L,Q
 Roberta Goodnow and Daniel Lipkie L,Q
 David and Margaret Greenwood Q
 Lyle (dec.) and Lorna Greer L,H,Q
 GTE Foundation L
 James and Susan Haaland L,Q
 Saul & Dayee G. Haas Foundation L
 Milton Halvorsen Q
 Elling and Barbara Halvorsen L,Q
 David and Barb Hamry L,Q
 Chris and Theodora (dec.) Hansen L,H,Q
 Harold Lemay Enterprises Inc. L,Q
 Harold and Sharon Harrison H,*
 A.L. and Isabelle Harstad
 Connye and Allen Hartman Q
 David and Constance Hellyer L,Q
 Dale and Sharon Hirz L,Q
 Holy Trinity Lutheran Church, Port Angeles L,Q
 Ernest and Irene Hopp L,Q
 Paul and Jeanne Hoseth L,Q
 Household International, Inc.
 Dennis and Linda Howard L,H,Q
 Conrad H.S. and Dianne Hunziker Q
 ITT Corporation L
 Thomas and Kathleen Jacobson L,Q
 Estate of Frances and Milton Jensen
 David and Patsy Johnson L,Q
 Dean and LaVonne Johnson L,Q
 Campgrounds of America
 Florence B. Kilworth Foundation L
 Timothy and Lisa Kittilsby Q
 Mark and Sue Knudson L,Q
 William and Gloria Koll L,Q
 Brant and Carol Koller
 Clifford and Marie Korsmo L,Q
 Howard and Eugenia Kvisnland Q
 Dawnell Lamb L,H
 Thora Harmon Larson L,H,Q
 John and Virginia LEEVER Q
 Ronald and Judy Lerch L,Q
 Arne and Ida Lervick L,Q
 Paul and Norita Liebelt L,Q
 Randy and Tara Lindblad
 Michael Little Q
 Valborg Brodahl Lowther L,Q
 Duane (dec.) and Susan Lund L
 John D. & Catherine T. MacArthur Foundation
 MacDonald-Will Foundation Q
 Bahne and Karin Martensen Q
 Eldred and Carol Matson L,Q
 Lance McAllister & Donna Brinkmeyer Q
 Joseph and Martha McCann Q
 Ann Miller Q
 Armin and Beverly Mohr L,Q
 Morgan Guaranty Trust Company L
 Cletus Morken L,Q
 Mountain View Lutheran Church, Puyallup L,Q
 Martin and Barbara Neeb L,Q
 Charles and Lois Nelson L,Q
 Arne and Rhonda Ness Q
 Robert and Patricia Nieman L,Q
 Herbert and Patti Nienstedt L,Q
 James and Midge Nokleberg L,H,Q
 Philip and Helen Nordquist L,Q
 Sherman and Gloria Nornes, L,Q
 Eric and Lisa Olsen Q
 David and Arvis Olson L,Q
 Alan Ostenson
 Richard and Lynn Ostenson Q
 Pacific NW Golf Association
 Pacific NW Newspaper Association
 Eugene and Barbara Pearson L,Q
 John and Cathy Pederson L,H,Q
 Barbara A. Peterson (Mrs. Warren) L,Q
 Norris Peterson
 Daniel and Virginia Phelan
 Lazarus and Martha Politakis Q
 Brian and Jane Price H,Q,*
 Jeffrey and Margaret Probstfield L,Q
 Carol Ann Quigg L,Q
 William and Betty Ramstad L,H,Q
 William and Joanne Rieke L,H,Q
 Jeffrey and Kathryn Rippey L,Q
 Clayton and Joan Royce L,H,Q,*
 SAFECO Corporation L
 Douglas and Vickie Saugen
 Martin and Barbara Schaefer H,*
 Dorothy Schnaible L,H,Q
 Seafirst Bank and Foundation L,Q
 Gary and Cheryl Severson L,Q
 Silverdale Lutheran Church L,Q
 Neil (dec.) and Rebecca Smith Q
 Frank and Susan Spear L,Q
 Orlando Spero and Nancy Kessler-Spero
 Neil and Wyoma Standal Q
 State Farm Companies Foundation L
 David and Lindy Staub L,Q
 Timothy and Barbara Stratton
 Kenneth Stroad L,Q
 E. Robert and William Stuhlmeier L,Q
 Dean and Carol Suss Q
 Edward and Mary Sunde Q

Mark and Wendy Swanson L,Q
 Estate of Hazel Swanson L
 John Templeton Foundation
 Texaco Foundation L
 The News Tribune L
 Eric Thomas
 Thomas and Connie Thomsen L,Q
 Alma Treede L,H,Q
 Trinity Lutheran Church, Enumclaw L,Q
 Trinity Lutheran Church, Lewiston L,Q
 U.S. Bancorp L
 Edward and Inez Weir Van Antwerp L,Q
 Henry and Nova Van Baalen L,Q
 Varian Associates, Inc. L
 David and Marvalee Wake L,Q
 Estate of Elsie Wakefield
 John and Bonnie Wascher
 Marie Webb Q
 George and Verda Wehmann Q
 Roger and Judy (dec.) Westberg L,Q
 Westinghouse Foundation L
 Richard Wiesner Q
 Dan and Ulrike Wiklund L,Q
 Wilcox Farms, Inc. L,Q
 Howard and Donita Wilson Q
 Donald (dec.) and Mary Griffiths Wiltse L,Q
 Thomas and Carol Wood L,Q
 David Yagow L,H,Q
 Winston Zee and Peggy Chan L,Q

\$1,000 TO \$4,999

12 Anonymous
 AT&T Foundation
 James and Julie Ageson Q
 John Aakre and Cynthia Michael L,H,Q
 Odven and Maxine Aakre Q
 Betty Aalbue Q
 John and Mary Adix
 Aris Adolf L,Q
 Rolf and Tamera Agather
 Timothy and Wendy Aho
 Ronald and Joan Ahre Q
 Eugene and LaWanna Ahrendt Q
 Kim Allen Aiken Q
 Travis and Shirley Aikin Q
 Angela Alexander Q
 Merrily Allen Q
 Ellsworth and Nancy Alvord Q
 John and Joann Amend Q
 Anacortes Lutheran Church L
 Cresencia Ancheta Q
 Mark Andersen and Bonnie MacMaster Andersen Q
 Arnold and Caroline Anderson Q
 Arthur and Cathy Anderson Q
 Barbara Anderson Q
 Charles and Margaret Anderson L,Q
 David Anderson Q
 Dennis and Ruth Anderson *
 Don and Rita Anderson Q
 Donald and Nancy Anderson Q
 Gustaf and Dorothy Anderson L
 Harlan Anderson Q
 Helen Anderson Q
 Herman and Vivian Anderson L,Q
 J. Douglas Anderson Q
 Jodene Anderson Q
 John and Dorothy Anderson L
 John and Myrna Anderson Q
 Paul and Janice Anderson Q
 Estate of Roy Anderson
 Katherine Andre Q
 Robert and Pamela Andrew Q
 Larry and Anna Ankrum Q
 John and Anne Aram Q
 George and Donna Arbaugh L,Q
 Karl and Julia Arbaugh Q
 John and Olga Arne Q
 G. Michael Arnold Q
 George and Karen Arola Q
 Ashford-McAloon Roberts Insurance Q
 Jo Anne Ashley Q
 Williana Ausherman Q
 BP America
 John and Karen Backman Q
 Audrey Bahr Q
 Cindy Bahr Q
 Thomas and Julie Baier Q
 Fredric and Georgia Bailey Q
 Herbert Bain Q
 Bradley and Sherry Baker Q
 Elbert H. Baker II Trust Q
 Brian and Jeri Lyn Baker
 Hardis and Gladys Bakken Q
 Harold and Lois Bakken Q
 Bank America Foundation
 Bank of Sumner Q
 George and Julie Barber L,Q
 Charles and Linda Barbo Q
 Stephen and Jeanine Barndt Q
 Katherine Barnett H,*
 J. Thad and Joan Barnowe Q
 Scott and Deborah Barnum Q
 Baskin Robbins Q
 Arthur and Sandra Bauer Q
 Richard and Lois Bauer Q
 Todd Baxter Q
 Jon Beake Q
 Eric and Marie Bean Q
 George and Andrea Beard Q
 Robert and Noreen Beatty Q
 Grant and Judith Beck
 Jeffrey and Dayna Bedingfield Q
 James Bekemeier Q
 Luther and Lois Bekemeier L,H,Q
 Bellingham Stevedoring Company
 Irma Bendock Q
 Shirley and Margaret Benham Q
 Steven and Lois Benham Q
 Edith Benson H,Q
 Leonard and Ruth Benson
 Michael and Mary Benson H
 Paul and Katherine Benson Q
 Ronald Benton and Kim Jensen Q
 Duane and Joanne Berntson L,Q
 James and LaVonne Berntson Q
 David and Patricia Berg L,Q
 Edward Berg Q

Helge Berg Q
 Karl and Joan Berg Q
 Ronald Berg L,Q
 John and Angela Berglund Q
 Howard and Gladys Bergum Q
 Edward and Lorraine Berndt Q
 Gary and Nancy Berner Q
 Henry and Ida Bernsten Q
 Rodney and Jo Ann Berntsen Q
 Walton Berton and Carole Booth H,Q
 Bethany Lutheran Church, Bainbridge Island
 Bethany Lutheran Church, Gold Beach Q
 Bethesda Lutheran Church, Eugene L,Q
 Bethlehem Lutheran Church, Tacoma L
 Newton and Dee Betts Q
 Le Roy and Aileen Bevolden Q
 John Biberdorf Q
 Gary and Mardel Bierwagen Q
 Big Timber Lutheran Church
 Donald and Judith Billings Q
 Bob and Patti Bills H,Q
 Charles and Barbara Bingham
 James and Lori Bingham Q
 Annabelle Birkestol L,H,Q,*
 Grace Birkestol L,H,Q
 Lynne Biteman
 Bruce and Jill Bjerke Q
 John and Gwendolyn Bjorkstam Q
 David and Dorothy Bjornson Q
 John and Celesta Bjornson Q
 S.K. (dec.) and Charl Blackwood Q
 George and Delphine Blair Q
 John and Nina Bley Q
 Grace Blomquist Q
 David and Judith Bluhm Q
 William and Katherine Blythe Q
 Randolph and Gail Bohannon Q
 Charles and Karen Bohike Q
 Clara Fjermedal Bohman Q
 Lester Bona Q
 Louis and Lorraine Bonaldi Q
 Andrew Bongfeldt Q
 Brian Bonner Q
 Book Club of Washington
 Ronald and Sylvie Boomer Q
 Melvin and Dorothy Boone H,Q
 Kai Bottomley Q
 Rodrick and Barbara Boyd H,Q
 Walter and Jeanette Braafladt H,Q
 Otto (dec.) and Goldia Brammer L
 Thomas and Anne Brandt Q
 Don and Pamela Bray
 Jake and Trina Breimer
 Ellen Breiten Q
 Brian and Christy Brennt
 John and Nancy Brickell Q
 John and Ruth Breihl Q
 John and Cheryl Briggs Q
 James and Danielle Brink Q
 Terry and Kerry Brink Q
 Bristol-Meyers Squibb Foundation
 Frank and Barbara Brocker L,Q
 Robert and Connie Brog Q
 Alan and Elaine Brooks Q
 Ellen Brown Q
 Steven and Jill Brown H,Q
 Terrance and Cordelia Brown Q
 Timothy Browning
 Charles and Carol Brunner Q
 Onella Brunner L,Q
 A. Dean and Marilyn Buchanan L,H
 Jeffrey and Janet Buege
 Maurice (dec.) and Mildred Burchfield L,Q
 Eugene and Evelyn Burgoyne Q
 Burlington Lutheran Church L
 Burlington Northern Foundation L
 Gerald and Darlene Buss Q
 John and Janet Bustad Q
 Leo and Signe Bustad Q
 C & C Paints
 CIGNA Foundation
 CNA Foundation
 Guillermo and Sally Calle Q
 Earl and Iris Cammock L,Q
 Terry and Ellen Lee Campbell Q
 Campbell Soup Company
 G. James and Carlene Capelli Q
 A. Mark and Karen Carlson H,Q
 Dale and Jean Carlson Q
 David E. Carlson Q
 David W. Carlson Q
 F. Paul and Judith Carlson
 George and Dorothy Carlson
 Herb Carlson Q
 John and Debra Carlson Q
 Loney and Sheila Carlson Q
 Ralph (dec.) and Janet Carlson Q
 Robert Carlson Q
 Stephen Carlson and Stacy Waddell
 Theodore and Alzora Carlstrom H,Q
 William and Jewell Carnett Q
 Carol Franc Buck Foundation
 Gwendolyn Carr Q
 May Carrell Q
 Michael Carson H,Q,*
 Richard and Delores Carstensen Q
 Davis and Pamela Carvey L,Q
 Thomas and Anne Case Q
 Dave Casmier Q
 Robert and Patricia Casteel Q
 Robert and Lisa Caulkins
 Center Electric Inc. Q
 Marietta Centko Q
 Central Lutheran Church, Bellingham L,Q
 Central Lutheran Church, Portland L,Q
 Century Companies of America L
 Chalker Putnam Collins & Scott Q
 Wing and Sophia Chan Q
 Craig and Kathy Chance Q
 David and Marcia Chance Q
 Ralph (dec.) and Ruth Chandler Q
 James and Ramona Charlston Q
 Gary and Sharon Chase Q
 David Cheever
 Mark and Asha Chesnut Q
 Chevron Corporation L
 Christ Lutheran Church, Odessa L,Q
 Christ Lutheran Church, Spokane L,Q
 Christ Lutheran Church, Walla Walla

Q
 Christ the King Lutheran Church, Milton-Freewater L,Q
 David and Carolyn Christensen Q
 Leslie and Edna Christensen Q
 Linda Sue Christensen Q
 Orson and Diana Christensen
 Russ and Claudia Christensen Q
 Rhoda Christian Q
 Ruth Christian Q
 B. Rodney and Esta Christiansen Q
 Edward and Alene Christiansen Q
 Howard and Vernita Christianson Q
 Chauncey and Nellie Christofferson Q
 Mark and Nanette Christofferson Q
 Christopherson Insurance Services Q
 Anthony and Martha Cimmarrusti
 Robert and Barbara Clark Q
 William and Margaret Clavey L
 Robert and Lynne Cleland Q
 Lloyd and Phyllis Cleven Q
 Kendall and Tammy Colburn Q
 Richard (dec.) and Charlene Colburn Q
 Leslie Collar Q
 Catherine Ann Collins Q
 John and Sylvia Collins Q
 Boyd and Sandra Colt Q
 Ronald and Barbara Coltom H,Q
 Edna Coltom Q
 Computer Associates International
 Eugene and Mary Cook Q
 James and Joan Cook Q
 Ronald Cook Q
 John and Mary Cooley Q
 Bruce and Carol Cooper Q
 Keith and Lynn Cooper Q
 Ruth and Les Copenhagen L,H,Q
 Donald and Joann Cornell L,Q
 Deborah Cornis H,*
 Brian and Joyce Crain Q
 Robert and Kathleen Creso Q
 Lawrence and Linda Cress H,Q
 Melville and Karen L. Nickel Creusere Q
 Edward and Marilyn Crosby Q
 Cross and Crown Lutheran Church, Renton
 Bruce and Tami Cudahy Q
 P. Scott and Kathleen Cummins
 Jane Curl Q
 Robert and Ann D'Unger Q
 Warren and Betty Daheim Q
 Leif and Carol Dahl Q
 Norman and Patricia Dahl Q
 Margaret Dakan H,Q
 Steven and Susan Dagleish Q
 Ray and Deanna Dally L,H
 Waite and Patty Dalrymple
 Cecil and Helen Dammen Q
 J.E. (dec.) and Cora Danielson
 Dale and Janice Dann Q
 Daryl and Gwendolyn Daus Q
 Earl and Anita Davie
 Bill and Nancy Davis L,Q
 Mark and Nancy Davis Q
 Leland and Debbie Dawson H,Q
 Estate of Michael and Emily Dederer L
 Howard Dempsey Q
 Denny Park Lutheran Church, Seattle Q
 Lewis and Clara Mae Dibble
 Neil and Doris Dickinsen
 Russell and Sharlene Dion Q
 Joel and Holly Dobberpuhl
 David and Wendy Dorothy Q
 Edwin and Edna Dorothy Q
 L. Douglas and Helen Doten Q
 Mark and Teresa Douglass Q
 Peter Douglass Q
 Dow Chemical Company Foundation
 Thomas and Caryl Dowell Q
 Gordon and Mildred Dowling Q
 Robert and Marjorie Drewes Q
 Timothy and Cheryl Drewes Q
 Dryer Mortuary Q
 Gordon and Mildred Dufseth L,Q
 Robert and Martha Duggan
 F. Alvin and Hildred Dungan H,Q
 Kenneth and Janette Dunmire Q
 Jeffrey and Karen Duzenberg Q
 Jerry and Adelaide Dykstra Q
 John and Kelly Dykstra Q
 Frederick and Mary Lou Eastman Q
 Earl and Denise Ecklund Q
 Earl Eckstrom L,H,Q
 Earl and Laurie Eckstrom Q
 Larry and Diane Edison Q
 Edison Lutheran Church, Bow L,Q
 Estate of Harriet and Francis Edlund L
 Larry and Kathleen Edlund Q
 Kenneth and Barbara Edmonds Q
 Dwight L.H. Edwins Q
 Mark and Lisa Egbert Q
 Lawrence and Christine Eggan Q
 Richard Ehlinger and Irina Volkova Q
 Christen and Laura De Verna Eidal Q
 Estate of Ingeborg Eide L
 Douglas and Shannon Eisert Q
 Bruce and Barbara Eklund Q
 Eli Lilly & Company Foundation
 Robert and Geneva Ellerby
 Arthur and Katherine Ellicksen H,Q
 John and Linda Ellingboe Q
 Robert and Janyce Elmer Q
 Rudolph and May Elmer Q
 Douglas and Gretchen Ely Q
 Emanuel Lutheran Church, Ritzville L,Q
 Joyce Emilson Q
 Emmanuel Lutheran Church, Spokane Q
 Emmaus Lutheran Church, Eugene Q
 Julius Eneboe Q
 Mark Engel
 Henry Ericksen Q
 Elmer Erickson Q
 Jack and Phyllis Erickson Q
 Leigh and Janice Erie Q
 Daniel and Karen Erlander Q
 Emory Erlander Q
 Loleta Espeseth Q
 Glenn and Edith Evanson Q
 Donald and Lois Ewing Q
 Fairbanks Lutheran Church L,Q

Gary and Marilee Falde Q
 Estate of Donald Farmer
 Carl and Margaret Faulk
 Einar and Marion Fauske Q
 Hall and Sheri Feeney
 Frank and Caroline Felcyn Q
 John Feldmann Q
 Lyle and Donna Feller Q
 Luther and Katherine Fendler L,Q
 David and Marilyn Fenn Q
 Dorothy Fenner
 Joseph and Lisa Ferraro Q
 Fiduciary Trust Company (Boston)
 William and Helen Finkle Q
 Bruce Finnie and Linda Gibson Q
 Fir Conway Lutheran Church, Mt. Vernon Q
 First Evangelical Lutheran Church, Tacoma Q
 First Lutheran Church, Bothell L, Q
 First Lutheran Church, Kennewick
 First Lutheran Church, Sioux Falls
 First Lutheran Church of West Seattle
 Melvin (dec.) and Bette Fitzgerald Q
 Gerald and Judy Flaskerud Q
 Flett Dairy, Inc. L
 William and Paula Foege L,Q
 Donald and Barbara Ford Q
 Michael and Mary Lynn Ford
 W. Stanley Ford Q
 Norman Forness Q
 Robert and Marjorie Forness Q
 Jeffrey and Dianne Foster Q
 Kathleen Franco Q
 Franco Fish Products, Inc.
 Mrs. Robert Franklin Q
 Marvin and Carole Fredrickson Q
 James and Sandra Freisheim Q
 Friends of Independent Schools & Better Education
 Carl and Evelyn Frost L
 David and Kari Frost
 Thomas and Barbara Frost Q
 James Funfar and Patricia Evoy Q
 Roland and Annette Funk Q
 Carl and Ingrid Fynboe Q
 G.S.P. Building Company
 Grant and Susan Gaither Q
 Cheryl Gale Q
 Leo Gallagher Q
 P. Raymond Gallie Q
 Thomas Gamet Q
 Daniel Gard Q
 Grant and Phyllis Gard Q
 Cecelia Gardlin Q
 W. B. and Jean Gardner
 Frieda Gatzke Q
 Bill and Marlys Gazecki Q
 James and Julie Gearheard Q
 Charles and Carol Geldaker Q
 Gene Pankey Motor Company, Inc. Q
 General Electric Foundation L
 Georgia-Pacific Corporation
 Earl and Sherrice Gerheim Q
 Erv and Willene Gerken Q
 Frida Tayet Gerla Q
 David Gerry Q
 Albert and Gladys Gerstmann Q
 Gethsemane Lutheran, Portland L,Q
 A. Hank and Hazel Giddings Q
 William and Rochelle Giddings L,Q
 Gordon and Mae Gilbertson Q
 T. Dean and Anderea Gillund Q
 Arthur and Virginia Gilmore Q
 Lee and Elizabeth Gingrich
 Lorin and Marylou Ginther L,Q
 R. T. and Susan Giroux
 Daniel and Lynn Girvan Q
 Michael and Kelly Givens Q
 Margaret Ann Glaser Q
 Glendale Lutheran Church, Seattle L
 Herbert and Kathryn Glick L,Q
 Robert Gomulkiewicz and Andrea Lairson Q
 Douglas Gonyea L
 Gilberto and Marylou Gonzales
 L. Keith and Debra Gorder Q
 Jay and Irene Gordon
 Stewart and Alice Govig Q
 Grace Lutheran Church, Wenatchee L
 Grace Lutheran Church Women, Port Townsend
 Leon and Ann Grady Q
 Olga Grahn L,H,Q
 Loren and Linda Gramson
 Joseph and Karen Grande
 Otis (dec.) and Volly Grande Q
 Ronald and Kay Gracias L,Q
 Kendall and Sheryll Graven Q
 David and Kathryn Gray Q
 Donald and Carol Gray Q
 Harold and Alma Gray Q
 Graybar Electric Company, Inc.
 William and Pamela Greenwood Q
 Guttorm and Inger Gregersen Q
 Halvor and Lillian Gregersen Q
 David Grieger Q
 James and Wendy Griffin
 Norene Gulhaugen Q
 Thomas Gumprecht and Bonnie Witrak L,Q
 Lorraine Gundersen Q
 David and Jana Gunovich Q
 Glenn and Beverly Gustavson Q
 Robert and Linda Gutmann
 David and Barbara Gutzler Q
 Nina Haagen H,Q
 George and Florence Haakons Q
 David and Joanne Haaland Q
 David and Kathleen Haar
 Gary and Kathryn Hagedank L
 Carl Hageman and Anne Lucky Q
 Eva Hagen L,Q
 Laurelee Hagen Q
 W. L. and Jacqueline Hagen Q
 T. Olai and Sarah Hageness Q
 Helen Hagg
 Hal and Elin Hagglund Q
 Victor Haglund Q
 Robert and Tammy Hall Q
 Christopher Halon
 Paul and Marilyn Halvor Q
 Darren Hamby Q
 Michael and Donna Hamilton Q
 E. David Hammerstrom Q
 Vernell and Carl Hance Q
 David Jens and Janis Lee Hansen Q
 Richard and Karen Hansen L,Q

Roger Hansen Q
 Gary and Susan Hanson Q
 James and Jill Hanson
 Jerry and Marilyn Hanson Q
 Kent and Marilyn Hanson Q
 Leanne Hanson Q
 Merle and Audry Hanson Q
 Vernon and Marlis Hanson Q
 Dennis Hardtke and Kathleen Swartz
 Mr. and Mrs. Robert Harkson Q
 Edward Harmic Q
 Rodney and Terry Ann Harne Q
 James and Mary Lou Harri Q
 Karen Hart Q
 Douglas and Deborah Hase Q
 Robert and Kathleen Hasselblad Q
 David and Kari Hatlen Q
 Mark and Mary Hatlen Q
 Joel and Kathleen Hauge Q
 Lawrence and Beverly Hauge Q
 Robert and Shirley Hauge Q
 Torval and Marilyn Hauge Q
 Chester and Irene Hausken Q
 Philip and Sally Hayes L
 Thomas and Nancy Heavey Q
 Maynard and Lise Hedegaard Q
 Alan and Cheryl Hedman Q
 Donald and Martha Hefty Q
 Luella Vig Hefty Q
 Milton and Camille Hefty L,Q
 Charles and Orrie Hegtvedt Q
 Sverre Helland Q
 Roy Helms
 Denny and Susan Helseth Q
 Paul and Mary Hemphill Q
 John and Beverly Henderson Q
 John and Andrea Hensel Q
 Heritage Concert Association
 William and Dorothy Herivel Q
 John and Colleen Herzog L,Q
 John (dec.) and Johanna Heussman L,Q
 Peter and Nancy Heussman Q
 Ronald and Miriam Heyer L,Q
 Paul Hidy Q
 Jeffrey Highland
 Earl (dec.) and Astrid Hildahl L,Q
 Roger and Joanne Hildahl L,Q
 Loren and Camilla Hildebrand L,Q
 Steven and Christine Hildebrand Q
 Theodore and Lisa Hile Q
 John and Christy Hilgers Q
 Wayne and Deborah Hill L,Q
 David and Linnea Hillesland Q
 Joe and Audrey Hinch Q
 Robert and Joanne Hinkle Q
 Carol Hintze
 Russell and Jacqueline Ho Q
 Neil Hoff Q
 Alfred and Betty Hoffman Q
 Donald and Mavis Hoffman L,Q
 Carl and Betty Hogan
 Theol and Anna Holland Q
 Alan and Marion Hokenstad Q
 Janet Hokenstad Q
 Norman and Ruth Hokenstad
 Gilbert Holland Q
 Marnee Hollis
 James Holloway and Judith Carr Q
 Richard and Karen Holmes Q
 Genevieve Holte Q
 Everett and Mary Jo Holum Q
 Holy Trinity Lutheran Church, Ephrata L
 Jack and Marilyn Hoover Q
 Earl and Verna Horngren Q
 Daniel and Katherine Horsfall Q
 Kristin Houle Q
 Michael and Jean Hovet Q
 Ronald and Lois Hovey Q
 Caroline Hovland H,Q
 Paul and Ordetta Hovland Q
 Randall Howard Q
 Karen Fynboe Howe Q
 H. Marc and Julie Anna Howell L,Q
 David and Kari Hubbard Q
 Walter and Joan Huber Q
 Laurence and Bonny Huestis L,Q
 Anne Huffman Q
 Claude Hunskor Q
 William and Edith Husby Q
 John Hushagen and Janette Schurman Q
 Lucille Iacuesa Q
 Robert (dec.) and Edean Ihlanfeldt
 Paul and Regina Ingram Q
 Intel Foundation
 International Council For Canadian Studies
 Galven and Delores Irby L,Q
 Thomas and Linda Isaacson Q
 Donald and Mary Jane Isensee Q
 Roger and Marsha Iverson Q
 Roger and Cynthia Iverson Q
 Thomas and Kristen Jacka Q
 Don and Alice Jacobs
 Kenneth and Stella (dec.) Jacobs L,H,Q
 C. Virginia Jacobs Q
 John and Karen Jacobson L,Q
 Orville and Donalee Jacobson Q
 Russell and Margaret Jacobson Q
 Steven and Julie Jacobson Q
 Daniel Jaech H,Q
 Estate of David and Maria James
 Mr. and Mrs. Lawrence James
 James River Corporation
 Samuel and Connie Janke Q
 Raymond and Scarlett Jansure Q
 Mrs. Charles Jarecki Q
 Lloyd and Inez Jellum Q
 John and Grace Jenkinson Q
 Robert and Jean Jensen Q
 Arthur and Rebecca Jerstad Q
 Edward and Ethel John Q
 W. Marvin and Delores Johns Q
 Allen and Clarene Johnson Q
 Anton and Lyndall Johnson Q
 Arthur and Luella Johnson Q
 Calvin and Alice Johnson Q
 Carl and Sue Johnson Q
 Clifford and Joan Johnson
 David and Debra Johnson Q
 David and Janice Johnson Q
 Donald and Dorothy Johnson E.
 Marvin and Virginia Johnson Q
 Frances Johnson Q
 James and Jane Johnson L,Q

Jerry and Julie Johnson Q
Joel and Randi Johnson Q
John (dec.) and Elma Johnson L,H,Q

Gerald and Mildred Linder Q
Light of the Cross Lutheran Church, Bothell Q
Elmer and Ruby Lindahl L,Q

Mount Cross Lutheran Church, Tacoma Q
Stanley and Julia Mueller
Frederick and Esther Muenschner

Clayton (dec.) and Leona Peterson Q
Dale Peterson Q
Edwin Peterson Q

Dennis Sepper and Nancy Connor Q
Fred and Jane Shanaman
John Shannon L,Q

Jon and Christine Tigges
Estate of Margaret Tillotson
E. Bart and Coeren Tilly Q

Urban agriculture harvests community pride

BY JANET PRICHARD



Rachel Nugent (RIGHT), with two of her students, Noelle Dennis and Yutaka Kumine

Future Farmers of America meet the urban cowboy. Community gardens often mean survival for millions of hungry people in developing countries, according to PLU Assistant Professor of Economics Rachel Nugent. In the United States, urban agriculture has different purposes, and it has been an important phenomena since the victory gardens of the World War II era. Nowadays, its growing popularity stems from the vast social benefits afforded densely populated neighborhoods.

Nugent, in her animated teaching voice, ticked off a handful of benefits. "Community gardens improve the look and safety of neighborhoods. Areas of former drug dealing have evaporated. Property values have increased. Neighbors get to know neighbors because tilling the earth is a great equalizer." She added that community pride is harvested along with prize tomatoes, cucumbers and carrots.

Can the ritual of back-fence recipe swapping be far behind? Certainly the bonds among neighbors strengthen and neighbors begin to look out for one another, their children and their homes.

In many developing countries plagued by environmental

damage, urban agriculture can encourage the use of recycled resources. "Yard waste and horse manure fertilize the soil and gray water, unsuitable for drinking, nourishes the seeds," Nugent said. "This process creates value from that which was without value," the economist explained.

Nugent spent the fall of 1995 in Rome, Italy, studying the sustainability of urban agriculture for the United Nations Food and Agriculture Organization. As an economist, she researched where community gardens flourished and why. Her final project outlined what public policies best assist people to create and maintain urban vegetable gardens.

Nugent's work with the United Nations led to a prestigious fellowship with the American Association for the Advancement of Science. Only 10 scientists were offered the fellowship, and Nugent was the only social scientist selected. She ran cost/benefit models of urban agriculture viability in selected cities, and what policies were needed to make them work.

What was most exciting for Nugent was the opportunity to work with a variety of scientists. "It underscores my work in the classroom. I try to teach my students to appreciate a variety of voices, to work together to solve complex problems," she said. Her cross-disciplinary approach is employed when she teaches in PLU's global studies program, integrated studies program, environmental studies area, and while guiding students in their independent projects.

Mostly, Nugent sows ideas that not only her students can reap, but also public policy makers, who can make it easier for community gardens to flourish.

KPLU's Jazz Starter Kit

COMPILED BY THE KPLU JAZZ PROGRAMMING STAFF



words, this kit has something for almost everybody.

Although we were originally asked to put together a list of our "Top Ten Jazz Releases of All Time," we soon found that it was an impossible task. No two people will ever agree on a jazz top 10. There are too many styles of jazz and too many opinions among jazz listeners. So, instead, we offer a "Jazz Collection Starter Kit" — 10 CDs that cover several areas (and eras) of jazz and serve as a starting point for further exploration of the music. In other

1. Kind of Blue – Miles Davis
Columbia

One of the finest jazz groups ever assembled (including John Coltrane, Cannonball Adderley and Bill Evans), and this is their only recording.

2. Time Out – Dave Brubeck Quartet
Columbia

Includes the song "Take Five," one of the most popular jazz records ever made.

3. Pure Ella – Ella Fitzgerald
Decca/GRP

Just Ella Fitzgerald and pianist Ellis Larkins. Pure, indeed.

4. Turn on the Heat – Fats Waller
RCA/Bluebird

Solo piano recordings from one of the most gifted and entertaining performers in jazz. Includes "Ain't Misbehavin'."

5. The Louis Armstrong Hot Five and Hot Seven Recordings
Columbia

These recordings are available on several CDs released by Columbia Jazz Masterworks. Very affordable, consistently delightful, absolutely essential.

6. Soulful Energy – The Ray Brown Trio with Gene Harris
Concord

A great example of the jazz/blues piano trio sound. Harris is one of today's most popular jazz pianists.

7. The Bossa Nova Years – Stan Getz
Verve

A three-CD set of the best of saxophonist Getz and his exploration of Brazilian music. Includes "The Girl From Ipanema."

8. Blues For Fred – Joe Pass
Pablo

Solo jazz guitar from the man many consider to be the master. Jazz versions of songs introduced by Fred Astaire in his films.

9. The Complete Decca Recordings – Billie Holiday
Decca

Lady In Autumn – Billie Holiday
Verve

The Decca recordings are the best of Billie early in her career. The Verve recordings were made toward the end of her life. Both collections are well worth your while.

10. John Coltrane and Johnny Hartman
Impulse/MCA

Saxophonist Coltrane and baritone vocalist Hartman only recorded one album together. It's one of the most romantic jazz releases of all time. Mood music of a very high order.

If you would like to order any of these CDs, you can call the Public Radio Music Source at 1-800-75-MUSIC. Their prices are competitive with those of CD stores in the area, they'll send the music right to your home and part of your purchase price will benefit KPLU. Enjoy.

PUBLIC RADIO
MusicSource
1-800-75-MUSIC

City names park for PLU nature lover

Growing up on 150 acres of land, it was only natural that Thelma Gilmur '42, '46, '64 would gain a deep, life-long appreciation for the environment. Now it seems that the environment has developed an appreciation for her.

The longtime Fircrest, Wash., resident and local environmental activist was recognized in fall by a city park named in her honor.

Thelma Gilmur Park is a seven-acre wooded parcel on Evergreen Drive and Emerson Street/40th Street West. Its serene landscape is tucked away, just off a bustling thoroughfare.

The park is home to a pond, surrounded by dense foliage, cattails, blackberry bushes and stands of dulchium — a rare wetland species.

Red alder, willow and western crabapple trees find room to grow there, and make spots for birds such as Stellar's jay, red-winged blackbirds and freshwater ducks.

Although Gilmur started out in teaching — she completed five years of teacher's education at PLU, earning three degrees — she was able to picture herself as an environmental activist early on.

She began her activism through environmental teaching with Girl Scouts in 1942, and continued it as part of the Nature Conservancy and as a charter member of the Tahoma Audubon Society. Gilmur also served on the Tacoma School District's Environmental Education Committee.

"You begin to see the changes, see the open spaces disappear," she said, describing why it was compelling to stick with the work for so long. "For many years I read environmental impact statements. Wherever the environment could be improved, I tried to help."

Gilmur helped with many environmental preservation projects in the Tacoma area over the years, but she says the one that she was most involved with was China Lake Park, located just two blocks from her home.

Gilmur also aided in preserving the park since named in her honor, helping citizens and the Tahoma Audubon Society con-

vince the city to pick up the land as open space instead of letting it be developed by the land's owner.

The simple fact that the park is there and that people will be able to use it is what Gilmur enjoys most about her new namesake. "There are lots of older people in Fircrest, and they will be able to walk on the trail," she said.

This story was excerpted from an article by Gustin Suttle that appeared in the Oct. 30, 1996 (Tacoma) News Tribune, and was contributed to by Katie Monsen '96



Thelma Gilmur was surprised last year when a local park was named in her honor.

CLASSNOTES

1928

Stella Jacobs, born September 1, 1907, died Jan. 19. Stella, a Parkland native, graduated from Pacific Lutheran Academy as a teacher in 1938. She married Ken Jacobs in 1933. Stella sang in Choir of the West, and also at Trinity Lutheran Church and Spanaway Lutheran Church. She started Stella's Flowers, a Parkland household word for 30 years. Her daughter, **Sandy Feisheim '59**, and grandson, **Jay Freisheim '81**, are also PLU graduates. Memorial services were held January 23 at Spanaway Lutheran Church.

1943

Sterling Raymond Harshman died peacefully in his sleep on Feb. 4. Harshman started in football and track as a student at PLU, setting a record in the 100-yard dash that held until 1989. His athletic performance was recognized with his induction into the PLU Athletic Hall of Fame in 1992. Harshman was also named in "Who's Who in American Universities."

Harshman served in the US Navy on active duty in World War II and the Korean War, remaining in the Naval Reserve until he retired as a captain in 1975. He also had a 30-year career as a biology teacher and coach at Puyallup High School. Harshman married Vernita Spooner in 1943 and had three children, **Cathy '69**, **Stephen '72** and Lisa. After Vernita's death in 1959, he married Jeanne Carpenter in 1961.

Part of a large PLU family, the survivors include his sister, **JoAnne Sandvig '49**, his brother **Marv Harshman '43** and wife **Dorothy '42**, and their sons, **Mike '67** and **David '78**.

1958

Thomas Reeves published a book called "The Empty Church: The Suicide of Liberal Christianity." The book is a study of the seven mainline Protestant churches, including the ELCA. It attempts to discover the reasons for the serious decline of these historic church bodies and makes suggestions for their revitalization. This is his 10th book. Thomas is a professor of history at the University of Wisconsin-Parkside. He and his wife, **Kathleen (Garrison '59) Reeves**, live in Franksville, Wis.

Joan Shapira of Vancouver, Wash., is a dealer for Watkins Products and is looking for people to work for her selling the line of home products. If interested, contact the PLU Alumni Office to find out how to get in touch with Joan.

1961

Patricia Sherman Budzius, named in the 1996 "Who's Who Among America's Teachers," teaches 8th grade language arts at Pinelake Middle School in the Issaquah School District. Her husband, Marty Budzius, a retired school administrator, was chosen as a runner in the 1996 Olympic Torch Relay as it went through Seattle on its way to Atlanta

in May. Marty was awarded the honor for his involvement in community service work.

1963



Ruth, Kaye, Robert, and Lori Olsen

Robert Olsen is pastor of Grace Lutheran Church, an independent congregation in Buckley, Wash. His wife, **Kaye (Whisler '64)**, is volunteer coordinator for COMPEER, a ministry of the Mental Health Chaplaincy of Tacoma and Pierce County. Their daughter, Ruth, is a Peace Corps volunteer, teaching English as a Second Language in Karshi, Uzbekistan, a former Soviet republic in central Asia. Their other daughter, Lori, is a PLU sophomore. The family lives in Parkland, where Bob and Kaye spent most of their growing years. (see story page 15)

Gwen Werner is a clinical social worker in private practice in Milwaukee, Wis. She recently completed the rigorous 33-mile Milford Trek in New Zealand with her husband, Bill, and youngest son, Josh. Bill is a producer/director for a public television station in Milwaukee.

1964

John E. Anderson and wife, Marilyn, live in Abbotsford, B.C., where John was installed as pastor of Peace Lutheran Church on Aug. 1. John, who majored in German at PLU, uses the language in his ministry.

J. Robert Shive is an associate broker in commercial and industrial real estate in Redmond, Ore.

1966

David Holmquist was installed January 26 as pastor of Calvary Lutheran Church of Eureka, Calif. He and his wife, Laura, moved there from Salem, Ore.

Linda (Carlson) Salatiello and Tom Salatiello live in Sanbornton, N.H. Linda serves on the council of the New England Synod of the ELCA and will be a delegate to the ELCA National Assembly in Philadelphia this year. Linda is self-employed and Tom works for the state division of mental health. This fall, Tom was elected to the New Hampshire House of Representatives. They have two children, Erika, 20, and Christopher, 17.

1967

Norman LeMay is chairman-elect of the Tacoma-Pierce County Chamber of Commerce.

1968

David Lindeblom of Lacey, Wash., was selected as the 1996 Region VI Elementary Science Teacher of the Year by the Washington Science Teachers' Association. Every year, a

science teacher is chosen from each of 10 geographic regions of the state at the elementary, junior high/middle school, high school and college/university levels. State awardees are then selected from the regional winners. David was honored because of his exemplary work with elementary students in science programs in the Yelm Community Schools. He is characterized as a dedicated educator able to present science to his students in exciting and challenging ways.

1969

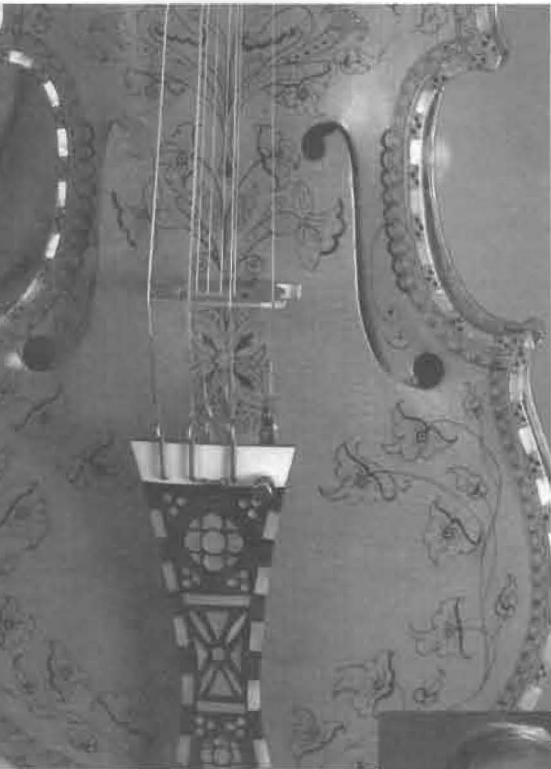
Bob Beller of Shelton, Wash., was one of the first slowpitch players inducted in the Kitsap Oldtimers Association Hall of Fame.

1973

After completing more than 14 years in the Gulf Cooperation Council as an Associate Secretary General for Economic Affairs, **Dr. Abdullah Ibrahim El-Kuwaiz** returned to the Ministry of Finance and National Economy in Saudi Arabia at the end of 1995. He became a Deputy Minister for Economic Affairs in 1996, and was also asked to serve as a board member of the United Saudi Commercial Bank. He was chosen as an executive director representing Saudi Arabia to the Board of Islamic Development Bank, which specializes in concessional development loans to Islamic countries. Last February he assumed the position of general manager of the Gulf International Bank of Bahrain, a wholesale bank with assets in excess of \$8 billion.

Hey diddle diddle, alum makes a fiddle

BY KATIE MONSEN '96



The rose window of Eastvold Chapel is the enduring symbol of PLU. Its familiar shape appears everywhere — on PLU's letterhead, sports schedules, T-shirts and Christmas cards.

Now it's even found a place on a fiddle.

The rose window is one of the symbols that decorates the newest addition to the Scandinavian Cultural Center collection, a golden-hued Hardanger fiddle.

The fiddle is the creation of Oregon residents and PLU classmates Lynn Berg and Virginia Langford Shive, both '64. The fiddle's decorative drawings symbolize their memories of the university.

As a prominent emblem of PLU, the rose window plays a large role in the fiddle's decoration. It is interspersed with crosses in mother-of-pearl inlay on the black fingerboard and tailpiece along the center of the instrument.

The rose window also appears in ink on the back of the fiddle. Douglas fir cones burst out of the window's center, supported by ivy twining around rhododendron and daffodil blossoms. The ivy and flowers weave their way onto the sides and front of the violin, as well.

The fir cone seeds that appear in the middle of the back of the fiddle represent the beginnings of adult life and education we had as students at PLU, Berg said. Around the seeds are daffodil blossoms and two long feathers pointing north and south, a reminder of the woodpecker that tried to peck a hole in the aluminum cross on top of Eastvold, he said.

Lynn Berg '64 donated this Hardanger fiddle to the Scandinavian Cultural Center at PLU. Intricate PLU-inspired designs ornament this golden-hued fiddle.



PHOTOS BY CHRIS TUMBUSCH

Small trios of dots representing the holy Trinity alternate with mother-of-pearl around the edge of the fiddle. Also around the edge are tiny inked "v" shapes, like the Douglas fir needles that fall on campus.

Sitting atop the neck of the fiddle is a symbol of Norwegian antiquity, a sort of lion or dragon's head, highlighted with gold leaf and baring piano-key ivory teeth. Audun Toven, PLU professor, said the creature is a figure used on stave churches in Norway before they decided whether or not they were Christian.

Berg's interest in fiddle carving began when his daughter Kari '90 began taking violin lessons at age six, said Berg's wife Karen '65. By the time Kari was nine, she was earning a reputation in their home state of Connecticut for her ability to play classical violin and old-time fiddle music.

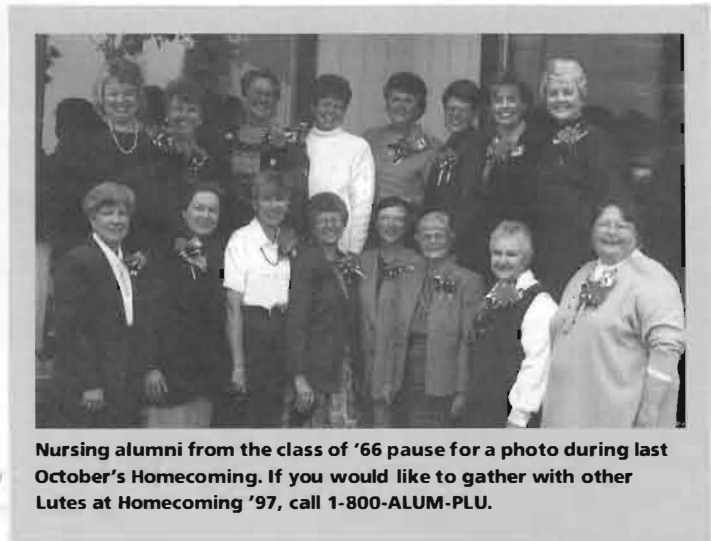
When Berg, who worked with Travelers Insurance Company at the time, found out how much it cost to keep violins in top shape, his "frugal Norwegian" side got the better of him. "I thought that if I knew how, I could do it myself," he said.

Berg enrolled in a class on violin repair at the University of Hartford, then took more advanced classes at the University of New Hampshire during his summer vacations. His interest continued to grow, and he started to make violins, building on a background in woodworking, primarily in canoes and grandfather clocks. His first violin took four summers to complete, constructed with guidance from a German master violin maker.

When Berg's family moved to Eugene, Ore., in 1991, he began making and repairing stringed instruments at a shop in his home.

In 1993, Berg decided the time had come to try his hand at creating a Hardanger fiddle, inspired by one such instrument that he had acquired a long time ago.

Although very similar in appearance, a Hardanger fiddle is quite different from an ordinary violin. Its structure is more complex, as seen in the gracefully curving slits on top — called "F" holes — that are carved so that one side of the slit actually tucks under the other side. Another difference is the Hardanger fiddle has a second set of strings, located below (continued page 18)



Nursing alumni from the class of '66 pause for a photo during last October's Homecoming. If you would like to gather with other Lutes at Homecoming '97, call 1-800-ALUM-PLU.

Dana Walk teaches English as a Second Language at the University of Idaho, is a busy single mom to Libby, age 8, and is currently fighting a recurrence of breast cancer. She is responding well to diet and nutritional therapies; prayers are appreciated as the fight continues.

Florence Welborn of Tacoma, Wash., was one of 17 citizens appointed by the Tacoma City Council to fill open slots on boards and commissions. She owns Mandarin Stained Glass Studio in Lakewood and is a board member of the Tacoma Historical Society. Florence was also appointed to the Landmarks Preservation Commission.

1974

Class representative **David Johnson** is compiling a directory of e-mail addresses for members of the class of 1974. If you'd like to be included, send your address to him at dejohnson@csupomona.edu.

1975

Paula Evjen of Puyallup, Wash., leads the vocal music classes at Northwood Elementary School.

Roger Lipera married Anita Pomerantz on Nov. 30 in Northridge, Calif. Roger works for McManus Enterprises, a supplier of theatrical supplies and equipment, in Bala Cynwyd, Penn. Anita is an associate professor at Temple University in Philadelphia. She teaches in the

communication sciences department and has done research in language and social interaction and health communication. Roger and Anita live in a 108-year-old house in the Germantown section of Philadelphia, not far from where the Colonial Army fought the famous battle in the Revolutionary War.

1976



Cindy McTee of Denton, Texas, is a professor of music composition at the University of North Texas. Her recent

activities include performances of her music by Tokyo's NHK Symphony Orchestra, the Cleveland Chamber Symphony and the Saint Louis Symphony Orchestra under the direction of Leonard Slatkin. In October, Voices of Change, a professional chamber music ensemble based in Dallas, premiered Cindy's "Einstein's Dreams." Written for six instruments, the work was funded by a Composers Fellowship from the National Endowment for the Arts.

1978

Carrie (Kipp) Howard and her husband, Andy, of Seattle, announce the arrival of Tessa Anne. Tessa (Ping Ping) was born Nov. 19, 1995, in Zhejiang Province, China, and adopted on Oct. 3, 1996, in Hangzhou, China. Carrie was most recently employed as a senior developmental editor at Microsoft. The Howards have a web page at <http://www.seanet.com/~howardac>.

Ken and Kaye (Remmereid '79) Lysen live in Bothell, Wash. Ken has been at Safeco in Seattle for 12 years; Kaye teaches at Garfield Elementary in Everett, Wash. They have three children — Kirsten, 13, Kevin, 11, and Kaarin, 8.

Lynda Ramsey (The Rams) is back in the Pacific Northwest, working in Portland for Nacco Materials Handling Group Inc. as financial reporting manager. She would love to hear from Lutes.

1979

Daniel R. Anderson and wife, Lisa, announce the birth of Alexis Matia on Sept. 20. The family lives in Lauderdale, Minn.

Nancy (Pershall) Stephenson and her husband, Bruce, of Poulsbo, Wash., announce the birth of twins, Natalie Rose and Scott Jacob, on Oct. 26.

1980

Dr. Dan Curtis and his wife, Leann, of Henderson, Nev., announce the birth of Parker Daniel on Dec. 6. Dan was an assistant professor of cardiothoracic anesthesia at Oregon Health Sciences University in Portland, Ore., for five years before relocating to Nevada in 1994 to join a 40-member private anesthesia practice in Las Vegas.

Willy and Cindy (Chiapuzio) Stiggelbout of Seattle announce the birth of Kyra Nicole, born Jan. 8, 1996. Kyra joins Zachary Daniel, 7, and Chloe Alexandra, 5.

Michael Haglund received a Sloan Fellowship, one of 14 awarded to neuroscientists in the country. He also was promoted to associate professor of neurosurgery and neurobiology at

Duke University Medical Center. He and his wife, Christine, live in Cary, N.C., with Sean, 7, and Tanya, 3.

Bruce and Kay ('81) Johnson live in Rochester, Minn., where Bruce is a consultant in the division of cardiovascular diseases at the Mayo Clinic. Kay is a supplemental RN at Mayo and is busy with their three boys. Anyone visiting the Mayo Clinic is welcome at their home.

1981

James Martin-Schramm of Decorah, Iowa, received a \$10,000 grant from the Pew Global Stewardship Initiative to support his work on book titled "Population Policies and Christian Ethics." James is a professor of religion at Luther College and the grant provides two courses of release time from his teaching duties this spring to allow him to write the final draft of his manuscript.

1982

Roberta (Towe) Jones finished her Ph.D. in accounting and will be starting a career as an assistant professor at the University of Texas-Arlington in the fall of 1997. Roberta and her husband, Stephen, live in Urbana, Ill.

David and Anita (Duske) Knight of Kent, Wash., announce the birth of Micah on July 31. Micah joins 10-year-old brother David, 8-year-old brother Jonathan, 6-year-old brother Caleb, 4-year-old brother Joshua and 2-year-old brother Titus. The whole family has adjusted well to Micah's arrival and they all are busy with homeschooling. David sells vacant land for Landman Inc.

Jennie Wodaage and Jay Reichman wed on Aug. 25 in South Newfane, Vt. Jay is an engineer.

1983

Eric Dooley and his wife, Jenny, of Phnom Penh, Cambodia, announce the birth of Ian Lewis on Oct. 15. Ian joins 11-year-old sister Emily, 8-year-old sister Natalie, 5-year-old sister Nicole and 3-year-old sister Rachel.

Lisa (Munson) Mulcrone and her husband, Gary, of Puyallup, Wash., announce the birth of Hayden Clarence on Feb. 24, 1996. Lisa teaches part-time in the Bethel School District so she can stay home with Hayden.

1984

Ed and Connie (Toth '85) Boyce of Boise, Idaho, announce the birth of E.J. on Nov. 23, 1995. E.J. joins 4-year-old sister Kaila. Connie is a pharmaceutical representative for Whitehall-Robins. Ed is an assistant basketball coach at Boise State University.

Hope (Dudley) Bullock and her husband, David, of Bellevue, Wash., announce the adoption of Esther in September. She was born on June 20, 1995. Esther joins 5-year-old sister Joy, who was adopted in December 1994. Both of their daughters come from Zhejiang Province in mainland China. Hope is a homemaker and elementary school teacher. David works at Microsoft.

David Chun and his wife, Alison, of Kaneohe, Hawaii, announce the birth of Dakota Rei Lynn Chun on Nov. 8. Alison is a make-up artist; David has been a fifth grade math teacher at Iolani School since 1990. He teaches in the same classroom where he spent his fifth-grade year as a student. David enjoyed visiting with friends during the All-Star Volunteer Weekend at PLU last September.

Teresa Heine married D. Chase Franklin on Sept. 21 at Denny Park Lutheran Church in Seattle. Teresa is an airplane pilot for United Parcel Service. D. Chase is a group program manager for Microsoft.

Yongkook Kim, of Palisades Park, N.J., announces the birth of daughter Bomee. Bomee joins 2-year-old brother Nicholas.

Bruce Larson and his wife, Jermaine, of Bellingham, Wash., announce the birth of Joshua James and Zachary John on May 16. Joshua and Zachary join 3-year-old sister Ellie.



Tom Layson is an anchor/reporter for WSYX in Columbus, Ohio. He and his wife, Shari, live in Pickerington, Ohio.

Michael Ronning married Christina Edwards on Sept. 21 at Mack's Apples in Londonderry, N.H. Christina is a dance teacher. Michael is the pastor of St. James Lutheran Church in Folsom, N.J. Following a honeymoon to Prince Edward Island in Canada, the couple has made their home in Folsom.

William Sargent and his wife, Joyce, of Dayton, Ohio, announce the birth of Jaime on Nov. 20.

Bruce D. Voss and wife Liane of Kailua, Hawaii, announce the birth of Erin Nalani Matsukawa Voss on May 16.

1985

Joyce (Bridges) Bodeau and her husband, Todd, of Almira, Wash., announce the birth of Kate Lynn on Sept. 25. Kate joins 4-year-old sister I. cha. Todd works the family farm. Joyce is a full-time mom.

Joe and Maria (Schweizer) Duffus of Montclair, Va., announce the birth of Daniel Alexander on Dec. 1.

Doug and Jill (Johnson '89) Gardner of Tacoma announce the birth of Elliot Clark on July 26. Elliot joins 1-year-old sister Emily.

ALUMNI PROFILE

Friend-to-friend, Compeer connects lives

BY KAYE OLSEN '64

Question: What volunteer community service organization involves students, faculty and alumni of PLU?

Answer: Compeer.

Compeer is a national and international project, plan, and program that trains volunteers for friend-to-friend support of people hurting from emotional problems or mental illness.

Currently, Compeer uses the help of student volunteers (J-Term students learning on Tacoma's Hilltop); Mental Health Chaplaincy Advisory Board Member Stewart Govig, PLU religion professor; and Compeer staff member Kaye Olsen '64.

The one-year-old program began locally as a program of the Mental Health Chaplaincy for Associated Ministries. It is generously funded by the Ben B. Cheney Foundation and the support of individuals, organizations, congregations and the county. The program has enjoyed coverage in local, county and national publications.

In the Tacoma area, Compeer volunteers work with professionals at all three major mental health agencies, visit group homes, attend a monthly gathering of friends called "Coffee Breaks" at Grounds for Coffee, attend training sessions at PLU, Western State Hospital and Christ Episcopal Church, participate in one-to-one, group or telephone volunteer matches of friends — talking, walking, going to concerts or movies or other activities.

Thriving on the values of friendship and community-building, Compeer has a strong spirit for combating loneliness and stigma with those who experience mental illness. A wide range of flexible volunteer opportunities is available. Call the Tacoma office at 206-383-5755 for more information. Ask for Paul Rietmann, director, or Kaye Olsen, volunteer coordinator, or leave a message.

Linda Skibiell-Gossler and her husband, James Gossler, of Auburn, Wash., announce the birth of Nicole Marie. Nicole joins 4 1/2-year-old brother Blake and 2-year-old brother Jordan.

Nancy Stuchell of Everett, Wash., was named to the Everett Public Schools Foundation board of directors for a three-year term beginning in fall of 1996. Her role is to serve students and staff in District No. 2 by enhancing the local education environment.

1986

Richard C. Bauer and Lesa Bauer of Naples, Italy, announce the birth of Christian Blake Armstrong Bauer on March 14. Rick is the director of Ship Repair Contracting for the US Navy Sealift.

Pat and **Denise Bettinger** announce the birth of their daughter, Shannon Elaine on Nov. 14. She joins brothers Scott and Eric.

Jamin and Karen (Shaw) Borg of University Place, Wash., announce the birth of Peyton Jamin on Nov. 5. Peyton joins 2 1/2-year old Mikayla Renee. Jamin and Karen are both elementary teachers.

Brad and Jennifer (Linham) Bossio announce the birth of Kathryn Grace on Dec. 4. Kathryn joins sister Mara Evelyn, 3 1/2 years old.

Pollyann (Brynstad) Butler and her husband, Jim, of Tacoma, announce the birth of MacGregor William on Aug. 7.

Andy Comstock and wife, Liz, of Tacoma, announce the birth of Jenna Elizabeth on Oct. 2. Jenna joins brother Joseph.

Rich Coulter is the principal and Title I/Migrant/Preschool programs coordinator at Delancey-Houghton Elementary School in the Soap Lake School District in Grant County, Wash.

Peter Douglass returned to Seattle from California. He is an engineer in Boeing's propulsion systems division, supporting engine testing for the 777.

Kathy McConnell traveled through Romania, Greece and Turkey this summer and continues to teach first grade at Graham Elementary in the Bethel, Wash., School District.

Charlott Siegele married Stanley Outman on Nov. 16 in Fountain Valley, Calif. Charlotte is an adoption social worker. Stanley is a building engineer. They live in Irvine, Calif.

Lennie Sutton spends five months of the year in Austria working with TCM International Inc. and the other seven months in Tacoma, Wash., working at Parkland Christian Church. You can check out TCM's homepage at http://ourworld.compuServe.com/homepages/haus_edelweiss.

Elizabeth (Menz) Woolsey and her husband, James, of Hampstead, N.H., announce the birth of Hannah Alexandria on March 30, 1996. Elizabeth teaches elementary art in Sandown, N.H. James is a park ranger at Lowell National Historical Park in Lowell, Mass.

1987

Rich and Ashlyn (Flanders) Arnold of Tacoma, announce the birth of Josiah Robert on Aug. 16. Josiah joins 9-year-old sister Chelsea, 7-year-old brother Nathan, 5-year-old sister Starre, 3-year-old sister Nadine and 1-year-old sister Tabitha. Rich is an analyst at Boeing and an assistant pastor at Harvard Covenant Church in Tacoma. Ashlyn is a homemaker.

Dawn (Schonberg) Bonner and her husband, Glenn, of Wenatchee, Wash., announce the birth of Noah Robert on July 27. Noah joins 5-year-old brother Kellen David. Glenn is the associate pastor at Wenatchee Valley Baptist Church.

Lori (Mathisen) Ciancio and her husband, Claude, of Renton, Wash., announce the birth of Michael Paul on Oct. 13. Michael joins 2 1/2-year-old sister Rachel Elizabeth. Lori is a homemaker and part-time physical therapist; Claude is a physical therapist.

Douglas Knight married Arlene Bruner on Aug. 31 at St. Stephen's Episcopal Church in Seattle. Arlene attends Western Washington University. Douglas is a dentist in Tacoma specializing in orthodontics.

Becky Kramer of College Place, Wash., was part of a three-person team that won second place in enterprise reporting in a Pacific Northwest Newspaper Association competition for outstanding daily newspaper journalism, as well as first place in a Society of Professional Journalists national competition. The award-winning work was "This Land is My Land," a series on the property-rights movement, written for the Walla Walla Union-Bulletin in Walla Walla, Wash.

Tim and Ann (Forney '85) Reiersen were married in 1987 and have lived in Yakima, Wash., since 1989. Tim recently began a water resources consulting business.

Darin Ringenbach of Tukwila, Wash., coaches football and teaches marketing at Curtis High School in Tacoma. Curtis' football team won the State AAA Championship for the second year in a row. Darin coaches the receivers and defensive backs.

1988

Edwin Dierdorff, Jr. works in paralegal real estate for Garden Botanika of Redmond, Wash. He received a paralegal degree from Highline Community College in 1991 and attends Bellevue Community College's Technical Support Program.

Janice (Voss) Moore and her husband, Scott, of West Linn, Ore., announce the birth of Megan Frances on Nov. 4. Megan joins 2-year-old brother Charlie. Janice quit her position with Safeco Insurance after the birth of Charlie to be a full-time mom.

Brenda Jean Ray recently performed her first vocal recital at the Community Music Center in Portland, Ore. In June she was appointed to the Board of Directors for the Portland Symphony Choir.

Susan (Donovan) Winton of New Plymouth, New Zealand, is the Asia market services coordinator at Pastoral Foods Ltd., a subsidiary of the New Zealand Dairy Board. The company exports 80 percent of its products world-wide.

1989

Kelly Barber married Danny Lam at the Regent Hotel in Hong Kong. They moved to Beijing, China, for Danny's job as senior vice president of investments at Bessemer Asia. Kelly does freelance consulting while looking for a job. Danny and Kelly find Beijing a very exciting place to be with the many changes occurring there.

Dan Cheek quit his job with Holland America Line Westours to travel the world for three months. He encourages others to do the same.

Paul and Susan (Robins '91) Cheek of Puyallup announce the birth of Shannon Lynn on Dec. 17. Shannon joins 2 1/2-year-old Dillon.

Brian and Lise (Hannon '90) Olsen of Bellingham, Wash., announce the birth of Joy Christine on May 17. Joy joins 2-year-old sister Grace. Brian is the pastor of North Shore Church in Bellingham. Lise runs a daycare in their home while raising Grace and Joy.

Brian Smith earned a master of fine arts degree from San Diego State University in 1994. He now teaches art at Blaine High School, in Blaine, Wash., the school he graduated from in 1985. He and his wife, **Melanie Smith**, live in Blaine with their 2-year-old son Corin.

Laurie Swift married Victor Raisys on Oct. 26 at St. Monica Catholic Church in Mercer Island, Wash. They both work at Microsoft, Laurie as an intern program coordinator and Victor as a product manager.



Alumni College at Holden Village

Mark your calendar for Pacific Lutheran University Alumni College, Aug. 10-16, 1997.

This year's college, taught by several PLU faculty, will be held at Holden Village, located in the mountains of northern Washington. All PLU alumni, parents and friends are invited to come for a family vacation or a personal retreat. Call Alumni and Parent Relations at 1-800-258-6758 for information.

Make the link with...LUTELINK

Lutelink is a career mentoring program connecting current students and alums. Become a member and help guide students and recent graduates within their chosen career path or as an alum use LuteLink for career changes. If you are moving you can also use Lutelink for PLU contacts in your new geographic area.

If you want to become a mentor or use this service for yourself, call the Alumni and Parent Relations Office at 206-535-7415 or 1-800-258-6758.



GET CONNECTED

Mike and Kathy (Bowles '87) Tuiasosopo announce the birth of Lanea Louise on Oct. 22. They live in Logan, Utah, where Mike coaches football at Utah State University and Kathy is at work on her master's degree.

Steve and Katrina (Neely) Wreggit moved back to Washington from Oklahoma. Steve works at Boeing and Katrina works for the Social Security Administration. They live in Marysville, Wash., and are expecting their first child.

1 9 9 0

David Berg and wife, Stephanie, live in Atlanta where David is a writer/producer at Cartoon Network (Turner Broadcasting).

Holly Fields Bilello and Richard Bilello of Bay Shore, N.Y., announce the birth of Olivia Fields Bilello on Dec. 21. Olivia joins 18-month old brother Austin Fields Bilello.

Elaina Dulaney was promoted to senior account executive at Waggener Edstrom Public Relations in June. Her

husband, Steve, is a product marketing manager at WRQ in Seattle. A son, Benjamin Alan, was born to Elaina and Steve on Sept. 30.

Timothy Farrell married Kimberly Scheiber on Aug. 10 at Immaculate Conception Catholic Church in Nashua, N.H. Kimberly is a music teacher. Timothy is a doctoral candidate at the University of Oregon in Eugene, Ore. He is also the director of bands at Valley City State University in Valley City, N.D., where Timothy and Kimberly live.

Lisa (Harris) Gonzalez and her husband, Drew, moved to Navarre, Fla., where Drew is stationed at Hurlburt Field as part of the special operations squadron for the Air Force. Lisa is enjoying time away from the nursing profession to be at home with their daughter, Rachel.

Anne (Larson) Gribble and her husband, Doug, of Kirkland, Wash., announce the birth of Hailey Marie on Oct. 8. Hailey joins 2-year-old brother Joey.

Take me out to the ballgame...

June 15
On Father's Day, treat the special dad in your life and join other alumni, parents and friends of PLU in the Kingdome as the Seattle Mariners take on the Los Angeles Dodgers. Game time is 1:35pm. Tickets are \$18 for adults. Call 1-800-ALUM-PLU.

July 13
Do you like your baseball better outdoors? Come join other alumni, parents and friends of PLU at Cheney Stadium for an afternoon of baseball as the Tacoma Rainiers meet Phoenix. Game time is 1:35pm. Tickets are just \$4 for adults! Call 1-800-ALUM-PLU.

First PLU Salmon Bake

August 23
The first PLU Salmon Bake will be held on campus. All alumni, parents, students, faculty, staff and friends of PLU are invited to join us for good food, entertainment, activities for children and the chance to see old friends and make new ones. Watch for more information.

See Scandinavia!

June 30 - July 15
Join alumni, parents and friends from PLU and a number of other Lutheran colleges and universities on a deluxe, fully escorted journey to sample the extraordinary beauty and rich heritage of Scandinavia. For more information call 1-800-ALUM-PLU.

THIS SUMMER, ALL ROADS LEAD TO PLU

Over 250 graduate and undergraduate courses will be offered at PLU this summer between May 27 - August 22. For more information and a course catalog, contact us at (206) 535-7129, 1-800-756-1563, fax (206) 536-5103, e-mail: spacsummer@plu.edu. Find our home page at <http://www.plu.edu/home/summer>.

TERM 1 May 27 - June 20

TERM 2 June 23 - July 18

Workshop July 21-25

TERM 3 July 28 - August 22

Registration begins April 14

PROGRAMS FOR HIGH SCHOOL STUDENTS



Throughout the summer, sports and activity camps are planned for basketball, tennis, softball, soccer, wrestling and football. Band, music ministry, youth leadership and yearbook design camps are also available. Information is available at 206-535-7454 or e-mail: marshjr@plu.edu.

July 7-25, 1997

Summer Piano Performance Institute offers junior and senior high school pianists an opportunity for concentrated study with master teacher Calvin Knapp. Call 206-535-7602.

July 13 - August 1, 1997

Summer Scholars gives academically gifted incoming high school juniors and seniors an opportunity to study and live with other gifted students. You can choose either a writing or science curriculum while earning college credit. You must be nominated by March 30 by a parent, teacher, counselor or community group, and apply by mid-April. Call 206-535-7129 for more information or e-mail: spacsummer@plu.edu.

July 13-18, 1997

Northwest Band Camp led by Raydell Bradley, offers junior and senior high school musicians a rare chance to perform with a large ensemble and take classes in music history, music appreciation, jazz, reed-making, instrument repair, conducting and electronic music. Limited enrollment. Call 206-535-7602.

PROGRAMS FOR TEACHERS

Throughout the summer, the school of education offers many courses for teachers. Call for your free catalog, 206-535-7129, or check out all of our summer offerings on the web: <http://www.plu.edu>.

July 21-25, 1997

Master Teachers of Music includes two workshops: Orff Schulwerk Method and World Cultures. Call 206-535-7602.

July 21-25, 1997

Advanced Placement Institutes at PLU features eight graduate-level workshops for beginning or experienced AP teachers. Choose from American government, biology, chemistry, computer science (C++), English Literature, English Composition, American history and AP calculus. Call 206-535-7129.

1997 Summer Sessions Pacific Lutheran University

July 20-25, 1997

"Doing Lab Safely" provides 50 hours of training for teachers (2 graduate level semester credits) in laboratory safety, management of hazardous materials, techniques to aid students in developing more positive attitudes toward the use and benefits of science and achieving compliance with State and Federal regulations. Teachers at schools within the State of Washington may apply for full tuition and room and board scholarships. Contact Sheri Tonn (206) 535-7552 for information.

WORKSHOPS FOR MARRIAGE & FAMILY THERAPISTS

July 21-24, 1997

"Learning to be a Systemic Supervisor" - Study legal and ethical issues, contextual influences, supervision models, evaluation procedures and methods. This course focuses on the critical issues of supervising in today's changing mental health environment. Fee: \$650 community, \$600 PLU alumni. Contact Cheryl Storm (206) 535-7747 for information and registration.

July 24-25, 1997

"MFT Systems Consultation" - This workshop is for marriage and family therapists who are interested in expanding their ability to work in a variety of human systems including social service, business and other organizations. Fee: \$75 graduate students, \$150 community, \$125 PLU alumni. Contact Cheryl Storm (206) 535-7747 for information and registration.

SPECIAL INTEREST

June - August

Fruit Festivals bring the freshest fruit of the season and great outdoor concerts for a festive lunchtime gathering. Mark your calendar and join us at Red Square at PLU. Tickets are \$2.50 (free with PLU ID).

June 18 Strawberry Festival

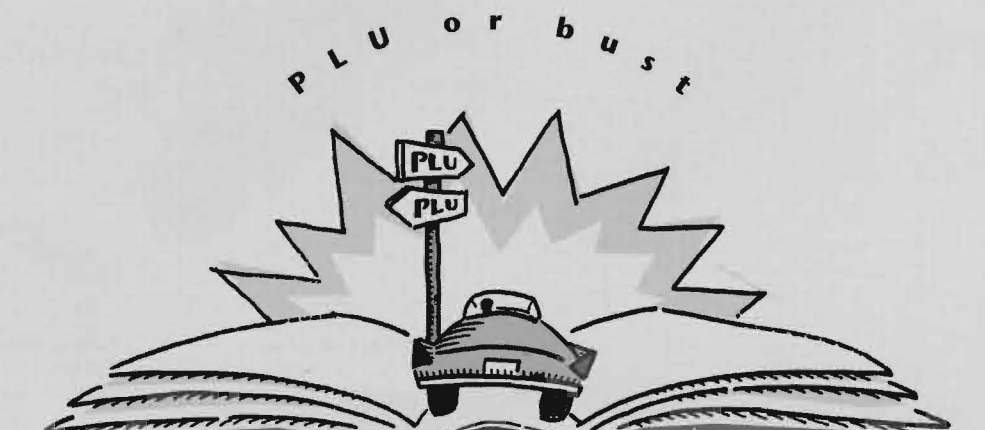
July 23 Raspberry Festival

August 13 Peach Festival



Elderhostel - This world-wide program offers seniors (55 and over) a week-long collegiate experience of classes and dorm life. During the summer of 1997, PLU will be hosting one week of Scandinavian cultural studies on campus and also a one week program in a service-learning format on Mt. Rainier. Complete information is available through the Center for Public Service (206) 535-7173.

And there will be many more outdoor and indoor events. Keep an eye on our web page or call 1-800-756-1563. You are always welcome!



Alums make beautiful music together



Gloriana

Gloriana has made the list. A professional choir established in 1993, the group has been named on the Salt Lake Tribune's "Top 10" list of concerts for the past two years, holding their own among performances by cellist Yo-Yo Ma, singer Mel Torme and pianist Leslie Howard.

At the heart of the choir are Deuane '75 and Karen (MacClellan '74) Kuenzi, founders of the Utah-based choir. Deuane serves as the 29-voice choir's artistic director, and Karen is the accompanist and vocal coach. Through the pair's extensive work with choirs over the last 18 years and their own experience as students in Choir of the West, they have developed a technique called "choral voicing" that they say is the basis of Gloriana's exciting sound.

Choral voicing begins when Deuane systematically listens to pairs and subgroups of voices in various physical placements in a choral lineup. He moves and adjusts the singers' positions rather than their voices, insisting that everyone sing with their 'natural' voice, their best sound, rather than trying to blend with their neighbor.

"While a sizable investment in time and experimentation is required to optimize the group's sound quality, once you start to hear the tremendous difference it makes in the overall sound, you'll never go back to voices in sections," Deuane said.

This past year, Deuane took his choral knowledge and went travelling, serving as guest conductor in Honolulu, Sydney, New York and Vienna.

Gloriana has made an impact on a larger scale, too, performing at national and international events, appearing on the CBS TV show "Touched by an Angel," and touring Rio de Janeiro as guest of the Brazilian Office of Cultural Affairs. The group has also sold compact discs in more than 30 countries through its home page on the World Wide Web, www.gloriana.com.

Rex Hapala of Woodland, Wash., works for the Washington State Department of Natural Resources as the southwest "Region Geologist," dealing with surface mining issues, slope stability and engineering geology for this area.

Jeffrey Hostetter married Katrina Kaiyala on Sept. 7 at Wapato Point on Lake Chelan in Chelan, Wash. Katrina works for Advance Radio Telecommunications in Bellevue, Wash. Jeffrey is the art director for Wood Associates in Kent, Wash. They live in Kent.

Pierre and JoAnn ('89) Kirby announce the birth of Jack Patrick on Dec. 4. The Kirbys live in Stockton, Calif.

Lisbet Larsen married Ronald Mielke on Oct. 19 on the Skansonia ferry in Seattle. Lisbet owns Ravishing Radish Catering. Ronald is a marine engineer for Victoria Clipper Navigation. They live in Renton, Wash.

Pam Meyer of Tacoma was promoted to manager of the international assignment program at The Frank Russell Company. She also earned her master of business administration degree from Seattle University in December.

Andrea (McGraw) Reid and her husband, Scott, of Seattle announce the birth of Lauren Elizabeth on June 11, 1996.

Holly Thorpe of Malvern, Pa., is working toward a master's degree in social work. Once completed, she will seek a school social work position.

Mark Wornath of Kent, Wash., was promoted to assistant manager of Norwest Financial's Renton branch office.

1991

Jessica Andrews and Chuck Leber were married Sept. 10 at the Bay Pavilion, Pier 57, Seattle. Jessica works in public relations and Chuck works in sales.

Sam and **Kendra (Turnbull) Barnes** of Ephrata, Wash., announce the birth of Gavin Rex on Nov. 25. He joins sister, Taylor, 2 1/2 years old. Kendra continues to stay home with the kids while selling Longaberger Baskets.

Timothy Borsheim and Kelley Reed '92 were married on July 13 at Sun Mountain Lodge in Winthrop, Wash. Kelley is a registered nurse at Swedish Hospital in Seattle. Timothy is a physical therapist at St. Joseph's Hospital in Tacoma. They honeymooned in Jamaica and live in Tacoma.

Jonathan and Kari (Sansgaard '90) Brendefur of Madison, Wis., announce the birth of Maren Elizabeth on Oct. 25. Kari is a pastoral intern (third-year seminary student).

Jonathan is a research assistant and Ph.D. candidate at the University of Wisconsin, Madison.

John Brooks and wife Sharilyn of Portland, Ore., announce the birth of Ryan Michael on Oct. 8. John continues to teach and serve as athletic director at Portland Lutheran High School and Sharilyn stays home to care for Ryan.

Jeff and Jennifer Meyer Brown announce the birth of Makenna Lindlee Brown, on Jan. 6. Grandparents are **Donald '64** and **Sandra Meyer**.

Kristi (Saari) Christianson and her husband, Gary, of Redmond, Wash., announce the birth of Alexa Delaney on Oct. 13. Kristi is a certified public accountant. She works at Contractors Bonding and Insurance Company in Seattle as the accounting manager.

Steve Cooper and Jennifer Pearson were married on Sept. 14 at Calvary Lutheran Church in Federal Way, Wash. They live in Anchorage, Alaska, where Steve is a pilot for Era Aviation Inc. Prior to the wedding, Jennifer worked as a marketing associate for Oncomembrane Inc. in Seattle for five years.

Ronald Crump is a senior account executive at Creative Source International. He works on the Hewlett-Packard Co., Novell, Wall Data Inc. and Microsoft accounts, still teaches aerobics and sings with the Idaho Opera.

Lois (Johnson) Debner was promoted to graphic designer at Merrill Corporation, a financial and legal printing company, in September. Lois and her husband, **Jerry Debner '90**, bought their first home in April 1996 in

Maplewood, Minn., a suburb of St. Paul.

Brian and Heidi (Gifford '89) Erickson announce the birth of Kyle Tristan on Nov. 3. Heidi is a physical therapist at Good Samaritan Hospital in Puyallup, Wash., and Brian is a senior auditor with Weyerhaeuser.

Scott Faulkner of Reno, Nev., received his master of music degree from the University of Nevada, Reno. He was named to Phi Kappa Phi honor society and is an adjunct music faculty member at University of Nevada, Reno, teaching music appreciation, jazz history and double bass. Scott was also named principal bassist for the Reno Philharmonic in November.

Gregory Felton of Richland, Wash., received a master's degree in teaching from Washington State University, Tri-Cities.

Shannon (Duff) Horn and her husband, Russell, of Redding, Calif., announce the birth of Nadia Kendra on Aug. 23. Shannon is an at-home wife and mother. Russell accepted a call as part-time pastor of Faith Lutheran Church (LCMS) in Burney, Calif. He was installed on Dec. 1. Russell also works with computers, web development and the Internet.

Daniel McKeown and Teri Arendt '93 were married on May 25, 1996, at First Lutheran Church in Tacoma. The best man was **Eric Steinmeyer '91** and the maid of honor was **Ann (Tyssland '93) St. John**. Daniel and Teri honeymooned in the San Juan Islands, relaxing and watching Orcas. Teri works in the recruiting division of ManorCare, a skilled nursing facilities company. Dan is a wine salesman for Unique Wine Company. Their e-mail address is MeganHair@aol.com.

Brandt Monfort of Chehalis, Wash., received his DDS degree in June 1996. He practices in association with Dr. Karen Stanley in Vancouver, Wash.

Molly O'Donnell and Paul Bissett were married April 12 at St. John Vianney Catholic Church in Kirkland, Wash. Molly is a sales representative for Medeva Pharmaceuticals in

eastern North Carolina and Paul is a chemical engineer for Weyerhaeuser Paper Co. Molly and Paul live in Washington, N.C.

Melissa O'Neil of Kennewick, Wash., was part of a team that placed first in spot-news reporting in a Pacific Northwest Newspaper Association competition for outstanding daily newspaper journalism. The award recognized the team's coverage of flooding in February 1996 for the Tri-City Herald in Pasco, Wash.

Maureen (Brown) Peterson and Sean Peterson '92 announce the birth of Tanner Beck on Jan. 1. Maureen finished her master's in counseling in August at St. Martin's College and works as a counselor with Comprehensive Mental Health. Sean is a marketing assistant with the Broadway Center for the Performing Arts. The Petersons live in Tacoma.

Teresa Raden married Jarold Bowerman on July 27 at Our Lady Queen of Heaven Catholic Church in Tacoma. Teresa is an English teacher at Olympia High School. Jarold is vice president of research and development at Sierra On-Line. They live in Renton, Wash.

Lisa Simonsen serves as pastor of Faith Formation and Learning at St. Mathew's Lutheran Church in Renton, Wash. She graduated from Luther Seminary in St. Paul in May, was ordained in September, and was installed at Renton in November.

John Springer and his wife, Megan, of Wenatchee, Wash., announce the birth of Hayley Ann on Nov. 28. Megan is a substitute teacher. John is a physical therapist.

Michael and Tracy (Bromley '92) Standish of Harker Heights, Texas, announce the birth of Joshua on Feb. 28, 1996. Joshua joins 4-year-old brother Christopher.

1992

Tracey Bryant and Trevor White '94 were married Dec. 28 in Corvallis, Ore. Tracey graduated from Yale University School of Medicine's Physician Associate Program in August and works in emergency

PLU Alumni are doing great things... What's new with YOU?

NAME _____ CLASS OF _____

SPOUSE _____ ALUMNUS? IF YES, CLASS OF _____

ADDRESS _____ WORK PHONE () _____
street city state zip

HOME PHONE () _____ IS THIS A NEW ADDRESS? YES NO MAILING LABEL NUMBER _____

BIRTH: CHILD'S NAME _____ M F BIRTH DATE _____

SIBLINGS, AGES _____

DEATH: NAME _____ DATE OF DEATH _____ AGE _____

SPOUSE, IF SURVIVING _____ YEAR, IF ALUMNUS _____

MARRIAGE: DATE/PLACE OF MARRIAGE _____ (No engagements, please)

OCCUPATION: WIFE _____ HUSBAND _____

PROMOTIONS/AWARDS: NAME _____

TITLE OF POSITION/COMPANY/AWARD/DATE ASSUMED _____

OTHER NEWS: _____

Deadline for the next *Pacific Lutheran Scene* is: April 4, 1997

Photos are welcome (preferably B&W) and will be used on a space-available basis.

MAIL TO: Alumni and Parent Relations Office, PLU, Tacoma, WA 98447-0003; FAX TO: 206/535-8555; or E-MAIL TO: alumni@PLU.edu

Now your class notes can be accessed from our home page, www.plu.edu

Fiddle *continued from page 14*

those played with the bow. These other strings vibrate by picking up resonance, making a droning sound similar to a bagpipe, Berg said.

In addition, the instrument is highly decorated, unlike a regular violin, placing it into the category of folk art, he said. Each one turns out differently, according to the creator's desires and talents. "It's not a precise art," Berg said. "That's what makes it fun."

These instruments are solely an art of Norway, first found in the Hardanger fjord region, Berg said. They traveled to this country with immigrants, who continued this part of the old Norwegian heritage. "Something very traditional is being interpreted here," he said. "This is my little participation in that migration."

Berg, a clarinet drop-out in junior high, had never taken a music or art class before he began making violins. That didn't daunt him, however, and he tried his hand at making the folk instrument. "The first one turned out well," Berg said. "I made another. It turned out okay, too."

Berg had made three Hardanger fiddles and then, in October 1995, had a new idea: to make a fiddle and donate it.

At that point he collaborated with Shive, the wife of Berg's Plueger Hall roommate, Robert Shive. "We spent three different

Saturdays around her kitchen table," he said, describing how he made the trip from his home in Eugene, Ore., to her house in Redmond, across the state. "I had some ideas for the decorative drawings I wanted to incorporate, but didn't know how to do it. I threw out my ideas and she organized them and put them on paper."

Together, Berg and Shive decided how to mesh the rose window into the design.

Berg spent six months and more than 200 hours building and decorating the instrument. It was done by spring of 1996, in time to travel to Mt. Horeb, Wis., for a Hardanger Fiddle Association convention in June. The fiddle also made a trip to a Scandinavian festival in Junction City, Ore., and to the state fair in Salem, Ore., where it won \$20 and a blue ribbon.

Berg donated the fiddle to the SCC at Julefest, an annual Scandinavian Christmas celebration. He gave it to the collection on two conditions: that it become part of the permanent collection, and that it always be available to whomever wanted to play it.

Berg sees his gift as his own way of making a contribution to the university. "Some people give money. Some people give kitchens. I give a fiddle," he said.

IN MEMORIAM

1925
Erna (Heimdahl) Hansen died at Skagit Valley Hospital in Mt. Vernon, Wash., on July 16. She was 91 years old.

1928
Stella Jacobs of Parkland, died Jan. 19 at 89.

1933
Benedicta "Dickie" Kreidler died in Tacoma on Dec. 19 at 82.

1940
Walter Simonson of Sacramento, Calif., died on Jan. 26. He was 79 years old.

1943
Sterling Raymond Harshman of Tacoma died on Feb. 4.

1944
Rhoda Mae Anderson of Seattle died on Oct. 20. She was 74 years old.

1949
Hoyt J. Harrell of Puyallup, Wash., died on Aug. 31.

1950
Arnold Helgeson of Seattle died in April 1996.

1951
Richard Molter of Spokane died Jan. 19 at his home. He was 67.

1952
Donald Loete of Spanaway, Wash., died on Nov. 6 in Las Vegas. He was 70 years old.

1958
Kenneth N. Olson of Wrangell, Alaska, died Dec. 26 while ice skating near Meyers Chuck, Alaska. He was 65.

1970
Cathy Gilligan of Dublin, Ohio, died on Dec. 7 at home. She was 48 years old.

1972
Donald Russell of Tacoma died on Nov. 21 at Madigan Army Medical Center in Tacoma. He was 75 years old.

1976
Owen Shackett of Puyallup, Wash., died on Oct. 3. He was 43 years old.

1985
Antje Kaiser of Tacoma, died on Dec. 3. She was 53 years old.

Judith "Judy" Walters of Tacoma, died on Jan. 8. She was 36 years old.

1990
William G. Taylor of Sioux Falls, S.D., died on Sept. 21.

A Window to the Past

Above, Graduation day, 1934. (FROM LEFT TO RIGHT), **Jennie Hansen, Kathryn McClary and Ella Fosness.**

Left, A celebration of Jennie and Art Hansen's 60th anniversary. (FROM LEFT TO RIGHT), **Cecil and Kathryn McClary, Jennie and Arthur Hansen, Ella and Elmer Fosness.**

Somewhere between hanging out at the "kicking post" and doing homework in pajamas, that which binds friendships is formed.

Jennie Hansen, Ella Fosness and Kathryn McClary graduated from PLU in 1934 as the best of friends. The strength of that friendship has proven to last 65 years.

Although they haven't lived in the same city since they graduated, they never failed to see each other at least once a year. Jennie lived in Hawaii for 45 years and Kathryn lived in California and Carolina for 40 years, but both would return to the Northwest annually for a dinner with Ella.

All three sang in Choir of the West, and roomed together in the attic bedroom of a woman named Mrs. Tholo. They studied teaching together, often doing their homework in their pajamas, and ate Dynamite cereal for breakfast, the cheapest cereal they could find. They were together on a choir trip when Kathryn saw the motion of tides for the first time and they walked along the railroad track to Spanaway during gym class.

Somewhere in the midst of all those small life events, when watching planes at McChord or donning corduroy pants for campus cleanup day, the glue of friendship bound these three friends fast.

Send your memories to Pacific Lutheran Scene, PLU, Tacoma, WA 98447, all 206-535-7430, or e-mail: scene@plu.edu.

Calif. Jacqueline is director of The Whole Life Wellness Program and Caroline is president of Adventures in Whole Life Wellness, a new business coordinating and leading wellness retreats.

Brody Loy of Seattle, was inducted to the Salem Academy's Hall of Fame on Nov. 2. The Hall of Fame honors selected individuals who have made significant service or athletic contributions to the school and in their community. Brody graduated from the Salem Academy in 1988. He was an all-conference quarterback and defensive back who helped lead the Crusaders to the state AA football championship game twice, in 1986 and 1987. Brody was named "Athlete of the Year" for 1987-88.

John and Monica (Mayer) Murphy of Honolulu, Hawaii, announce the birth of Joseph Anthony on Aug. 26. John is an OB/GYN physician with the US Army. Monica has taken time off from being a labor and delivery nurse to stay at home with Joseph and brothers, Jacob, 6, and John Patrick, 2. Monica and John expect to move to Heidelberg, Germany, in July.

Andrew Podolske and Suzanne Wastier '91 were married on Sept. 1 at Kubota Garden in Seattle. Suzanne attends the Seattle Midwifery School. Andrew is an assistant branch manager at First Interstate Bank.

Roj Rohila of Chicago attends Northwestern University dental school. He will graduate in April 1998.

Laura Rowley will receive her master's degree in English as a Second Language from Sacramento State University in May and is also pursuing a degree in speech pathology. She lives in West Sacramento, Calif., is a consultant with Mary Kay Cosmetics and recently recorded a compact disc with her choir.

Karen Spadaro of Laguna Niguel, Calif., is the telecare manager for the West Coast Regional Telecare System for Vitus Innovative Hospice in Orange, Calif. She is also starting a master's program at California State University.

Susan B. Swanson graduated from PLU for the second time in December with a bachelor of arts in Biology, working toward a career in scientific illustration. She is employed part-time at KPLU.

1993

Marcus Berghmd and Sara (Hagan) Cummings presented a poster session of their thesis research on domestic violence at the national conference of the American Association for Marriage and Family Therapy in Toronto,

medicine. Trevor is a police officer working with gangs.

Dan Buchanan of Edmonds, Wash., joined Delaunay/Phillips Inc. as an account manager in the company's media relations practice group.

Eric DeJong of Mount Vernon, Wash., is the new assistant principal at Post Middle School.

Tyler Gillis is the owner of Gillis Walls L.L.C., a company that builds modular retaining walls and that has been in business for three years. The company's latest project is a new Walgreen's Drug Store being built in Tacoma. Tyler lives in Fircrest, Wash., with his wife, Janine, and their 7-year-old daughter, Jacki, and 2-year-old son, Troy.

Jennifer Hallman of Kirkland, Wash., works for Safeco Insurance in Seattle. She is the computer systems support analyst for the corporate legal department.

Jackie (Martinson) Halsted and her husband, John, of Tahuya, Wash., announce the birth of Sierra Jordan Lee on Aug. 29. Jackie is the controller for a regional manufactured home dealer. John graduated from the Criminal Justice Training Academy in October. He is a police officer for the City of Poulsbo.

After a Nov. 24 wedding and a honeymoon at Timberline Lodge on Mt. Hood, Ore., **Janae L. Hodge** and Terrence Parks are making their home in Lake Forest Park, Wash. Janae is a Spanish teacher at Shorewood High, and was recently recognized as staff

member of the month and in the 1996 "Who's Who Among American Teachers and Professors." Terry goes to school full-time, plays in a jazz-rock band and is employed at United Grocers.

Carey Jennings married Michael Sketchley on Aug. 18 at Phinney Ridge Lutheran Church in Seattle. Carey is an assistant to the managing partner of Coblenz, Cahen, McCabe & Breyer in San Francisco. Michael is a graduate of Washington State University and works in his family's restaurant business, Garibaldi's on Presidio, in San Francisco's Pacific Heights. Carey and Michael live in San Francisco.

Jacqueline Keeler and Caroline Harrison of Petaluma, Calif., announce their union on Aug. 24 at Westminster Presbyterian in Tiburon,

Winter Sports Summary

BY NICK DAWSON

Men's Basketball

At press time, PLU had yet to lose a men's basketball home game this season on the Names Court. The beautiful new hardwood court in Olson Auditorium has been friendly to the Lutes whether a game lasted the regulation 40 minutes or stretched into three overtimes. In fact, the Lutes have played a pair of three overtime games at home this year, beating Dordt College (Iowa), 108-103, on Dec. 27 and Willamette University (Oregon), 101-100, on Jan. 14.

Women's Basketball

Kim Corbray, arguably the best player to wear a PLU women's basketball team uniform, surpassed the 1,000-point mark in the 13th game of her third season as Lute. The 5-foot-4-inch junior point guard scored her 1,000th point on a layup in the final minute of her team's 71-57 victory over Whitworth College on Jan. 17. Corbray is the sixth player in the program's history to surpass 1,000 points, and only two of those players reached that mark in their junior years. Kelly Larson (1985-89), is first with 1,545 points; and Kris Kallestad (1983-87), is second with 1,464 points. Corbray is already Pacific

Lutheran's all-time steals leader, and is on pace to break Larson's single-season scoring record of 422 points.



LAWSON KITA

Wrestling

Senior team captain Matt Bliss qualified for his fourth straight trip to the NAIA national tournament, scheduled for March 6-7 in Jamestown, N.D. An honorable mention All-America performer in 1995, Bliss is one of the

country's top-ranked 177-pounders. He is one of five Lute wrestlers to earn a berth at nationals.

Swimming

Pacific Lutheran University will serve with the University of Puget Sound as co-hosts of the NAIA Swimming & Diving Championships. The event will take place March 5-8 at the Weyerhaeuser King County Aquatic Center in Federal Way. Both the 1993 and 1994 championship meets were held at the same venue.

The "hometown" Lutes will be among the top teams at the event. Coach Jim Johnson's women's team finished third a year ago and returns many of its top swimmers, including junior Aurora Bray, the defending national champion in the 500- and 1650-yard freestyles. The men's team was 7th a year ago, led by sophomore Mike Simmons, who won the 100 breaststroke at nationals.



LAWSON KITA

Canada, in October. Their research has caught national attention and they have been asked to talk about their results with a reporter for the Family Therapy News, the national newsletter sponsored by the American Association for Marriage and Family Therapy.

Carla (Putvin) Derie and her husband, Mike, of Tacoma, announce the birth of Trevor Michael on Aug. 20. **Dirk DeYoung** operates his own dental practice in Marysville, Wash. **Mark Eastman** married Hollie Jantz '95 on Dec. 21 in St. John's Lutheran Church of Sacramento, Calif. Mark is director of youth ministries and Hollie teaches elementary school. **Anneke Ernst** will graduate from Gonzaga School of Law with in May. She works for the Spokane County Prosecutor and won her first jury trial in September. **Kristin Koss** married Kevin Flandreau on Sept. 28 at Lutheran Bible Institute, in Issaquah, Wash. Kevin is a sales representative at Definitive Audio in Bellevue and Kristin is a sales administrator for Pyramid Breweries in Seattle.

Jennifer Graham of Norcross, Ga., works for Atlanta Capital Management Company and attends Georgia State University. She is half-way through the master of business administration finance program. **Susan Halvor**, a student at Pacific Lutheran Theological Seminary, is also the senior editor of Span, a seminary publication. **Gary and Julie '94 Hogan-Underdahl** moved to St. Paul, Minn., in August 1996. After spending four months in Europe backpacking and camping, and two years in Seattle, Gary decided to attend Hamline Law School. Julie is doing a lot of freelance work, writing and editing.

Kari Kangas and his wife, Heli, of Helsinki, Finland, announce the birth of Olli Oskari on Aug. 8. **Wendy Kritsky** of Pocatello, Idaho, is in her last year of physical therapy school, and has a residency in Pittsburgh in the fall and in Winston Salem, N.C., in the spring. She will graduate in May 1997.



Kristina Kurle wed Stein Dolan on July 27 in St. Andrews Lutheran Church of Bellevue, Wash. Kristina completed her master's in education this

summer at Seattle University and teaches fourth grade in Bellevue. Stein is an engineer at K2 ski company. **Kimberly Malek** married Andrew Harnish on July 6 at Timberline Lodge near Mount Hood in Oregon. Kimberly works in the marketing department of Starbucks Coffee Company. Andrew works in sales at NW Company. They honeymooned by taking a two-week bicycle trip that started in Durango, Colo. Kimberly and Andrew live in Seattle.

Kori Anne McNary is a medical volunteer in the Peace Corps until September 1998. Please write to her at: PCV Kori Anne McNary, Paix De La Corps Americain, B.P. 1927, Conakry Guinea, West Africa.



G. Calvin Nichols III married **Megan Arno '96** on Dec. 22 at Ft. Lewis, Wash. Calvin is a juvenile detention officer for Pierce County Juvenile Court and Megan is

a 2nd Lieutenant in the Army Nurse Corps. **Stella Pilostomos** married Gregory Ritchey on July 13 at Chapel Hill Presbyterian Church in Gig Harbor, Wash. Gregory is a law student. Stella is a personal trainer, an aquatic fitness director and the person in charge of corporate and community relations at The Valley Athletic Club in Tumwater, Wash. Stella works with the Thurston County task force and St. Peter's Hospital to get Americans moving towards a healthy life.

Michael Thompson and Tara Crews were married on Aug. 17 at Lutheran Church of St. Paul in Graham, Wash. Tara is a travel consultant. Michael is a manager for Gig Harbor and Tacoma Athletic Clubs. They honeymooned in Las Vegas, Nev., and make their home in Tacoma.

Gail Wilkendorf married Dave Laney on Nov. 11, 1995, in Visalia, Calif.

Gail is a kindergarten teacher; David is a videographer. They live in Visalia.

1994

Heather Berger has a two-year contract at the International School of Kuala Lumpur in Malaysia, teaching grades 3-5 learning skills (special education). Anyone who wishes to write her may do so at: International School of Kuala Lumpur, P.O. Box 10359, Kuala Lumpur 53100, Malaysia.

Abigail Downing Blankner has begun work on a master of theological studies degree at Candler School of Theology, Emory University in Atlanta, Ga.

Elizabeth Cusato and Kristopher Wolfe were married Jan. 4 at Trinity Lutheran Church in Tacoma. Elizabeth is a music teacher at Charles Wright Academy in Tacoma, and Kristopher, a music student at PLU, will graduate this year.

Emil Gjester married Jane Oeltjen on July 27 at Valley Community Presbyterian Church in Lake Oswego, Ore. They spent their honeymoon in both Napa Valley, Calif., and Scandinavia. Emil and Jane live in Palo Alto, Calif.

Kristin Hartwell serves in the USAF as a Chinese Mandarin Cryptologic Linguist at Hickam AFB in Honolulu, Hawaii, after completing 15 months of language training at the Defense Language Institute in Monterey, Calif., and an additional five months at Goodfellow AFB in San Angelo, Texas. Her plans for the year include lots of snorkeling, hiking and a trip to New Zealand in the fall.

Kirstin Jensen is moving to Eugene, Ore., for a new job as recreation specialist for Eugene Parks and Recreation as a whitewater rafting guide and ropes course and rock climbing instructor.

Siv (Karinen) Maloney is finishing her master's degree in organizational leadership in March at Chapman University. She and her husband, Matt, will be relocating to Oslo, Norway, this spring.

Andrew Gray and Nikki Mathieu were married on Oct. 6 in Richland, Wash. Nikki is on the Young Life staff. Andrew works in construction. They live in Wenatchee, Wash.

Kim Bradford placed first in feature-writing in a Pacific Northwest Newspaper Association competition for outstanding daily newspaper journalism. She was given the award for a story in the Tri-City Herald (Pasco, Wash.) about a high school boxer who was training for his first big tournament. Kim followed the boxer through his training and to Spokane, Wash., for the tournament. She was also on a team that placed first in spot-news reporting in the same competition. The award recognized the team's coverage of flooding in February 1996. Kim works for a group of papers between Baltimore and Washington, D.C. She lives in Columbia, Md., with her husband, **Scott Johnson**, who is finishing law school. **Scott and Becca (Wilson '95) Thompson** moved to Puyallup, from Eugene, Ore., in December. Becca is an elementary school substitute teacher in the Puyallup School District. Scott is a staff accountant at Moss Adams in Tacoma.

1995



Eric Anthony and Hallie Klipper were married on July 20. Eric is a mechanical engineer for Thermoguard Equipment Inc.

Hallie is a research assistant and graduate student at Washington State University. They live in Spokane, Wash.

Kevin Benson teaches English as a Second Language at the University of Wonkwang, Iksan City, Korea.

Matt Hulquist and Kristi Keene were married Dec. 28 in Missoula, Mont. Kristi will graduate from Baylor physical therapy program in June and Matt is a second-year medical student at the University of Washington.

Ryan Petersen and Shelby Reed '96 were married on June 1 at the Faith United Methodist Church in Issaquah, Wash. Shelby works at Campbell's Resort in Chelan, Wash. Ryan works with his father in the family's orchard, Antoine Orchards, and freelances in graphic design. Ryan and Shelby honeymooned in Kauai and Maui, Hawaii, and live in Chelan, Wash.

Krista Sickert of Tacoma, is the director of youth ministry at Messiah Lutheran Church in Auburn, Wash., where she has worked since August 1995. Krista works with sixth through twelfth graders on a full-time basis, averaging 50-60 youth group attendees a week.

1996

Lisa Balmes teaches first grade at Byrom Elementary School, Tualatin, Ore., in the school district where she grew up. She says this has been a terrific experience and hopes to do this for the rest of her life.

Carrie Bryant and Matthew Strehlow of Corvallis, Ore., left on January 3 to volunteer teach for a year in Tanzania through the ELCA Division of Global Mission. Carrie will teach biology and Matt will teach chemistry to Tanzanian high school students.

Kathleen Carlisle married Steven Fountain on July 27 at Chateau Lorane in Lorane, Ore. They honeymooned on Vancouver Island, British Columbia, and live in Urbana, Ill.

Christine Hanson married Jeffrey Prichard on Aug. 3 at Silverdale Lutheran Church in Silverdale, Wash. Christine is a nurse at Harrison Memorial Hospital and a nurse practitioner on Vashon Island, Wash. Jeffrey is a student at Tacoma Community College in the paramedic program, and also works at Harrison Memorial Hospital. Christine and Jeffrey honeymooned in Cabo San Lucas, Mexico, and live in Bremerton, Wash.

Ryker Labbee married Carrie Gargas on Sept. 7 on the beach at Kalaloch followed by a reception at Lake Quinalt Lodge in Quinalt, Wash. Carrie is a social worker and interpreter in Tacoma. Ryker is an information technology consultant for a computer firm in Renton, Wash. They honeymooned in New England and live in Normandy Park, Wash.



▶ Sue Ferber-Goodspeed's ('93) photo from Trondheim, Norway, can be found on a series of notecards sold by PLU's Center for International Programs. A set of 12 sells for \$5 and benefits study abroad scholarships. Call 206-535-7577 to place your order.

arts events calendar

april

- 5 SAT** **PLU Connections - Twin Cities**
Held in conjunction with Lutheran College Fair
- 6 SUN** President Anderson preaches at Central Lutheran Church in Minneapolis.
- 10 THUR** **Lyric Brass Quintet**
8pm, Lagerquist Concert Hall, Mary Baker Russell Music Center

SPECIAL EVENT

Americas Conference

PLU and the Northwest International Education Association host "The Politics of Language and Identity in the Americas," a two-day conference. Registration is \$35. Call 206-535-7577 for information and registration.

APRIL 3

Peruvian Artwork Presentation

6pm, Scandinavian Cultural Center

An exhibition of the works of renowned Peruvian artisan Nicario Jiménez Quispe, master of the retablo — a brightly painted wooden box with three-dimensional figures from scenes of daily life in Peru. Quispe will present "Art and Cultural Resistance in Peru."

Music from the Americas

8pm, Lagerquist Concert Hall, Mary Baker Russell Music Center

An Andean folk troupe, Native American flutes and drummers, and Brazilian percussionists and vocalists perform "Music at the Crossroads in the Americas," celebrating a variety of musical traditions.

Tickets are \$5 adults, \$3 students, free to conference participants.

APRIL 4

Americas Conference

9am, Scandinavian Cultural Center

"The Politics of Language and Identity in the Americas," presentations and panel discussions exploring the role that language and culture play in shaping social, political and economic reality in the Americas. Presentations include "Politics of Linguistic Borders in the US — the Spanish-English Issue," "Language, Ideology and Nationalism in Francophone Canada" and "Indigenismo and Self-Representation in Latin America: Myth and Reality."

13 SUN **Early & Baroque Music**
3pm, Lagerquist Concert Hall, Mary Baker Russell Music Center

16 WED **University Chorale**
The Chorale begins a four-day tour through Coeur d'Alene, Missoula, Kalispell, Yakima and Wenatchee

20 SUN **PLU Connections - Montana**
President Anderson preaches at Immanuel Lutheran Church in Missoula.

22 TUES **University Chorale**
8pm, Lagerquist Concert Hall, Mary Baker Russell Music Center

23 WED **Concert Band and Men's Chorus**
8pm, Lagerquist Concert Hall, Mary Baker Russell Music Center

24 THUR **Flute Choir**
8pm, Lagerquist Concert Hall, Mary Baker Russell Music Center

25 FRI **University Jazz and Jazz Lab Ensembles**
8pm, Lagerquist Concert Hall, Mary Baker Russell Music Center

26 SAT **Norwegian Heritage Festival**
11am-3pm, Scandinavian Cultural Center, admission free

28 MON **Initiative 13: Seattle's Anti-Gay Campaign**
2:30-3:30pm, Xavier 114
Presentation on "The Virtues of Dissent: An Analysis of Seattle's Anti-Gay Initiative 13 Campaign" by Beth Kraig, associate professor of history

29 TUES **University Singers**
8pm, Lagerquist Concert Hall, Mary Baker Russell Music Center

may

2 FRI **Choral Union and Northwest Sinfonietta**
8pm, Lagerquist Concert Hall, Mary Baker Russell Music Center
Mozart's Requiem

3 SAT **Q Club Banquet**
6pm, Olson Auditorium

7 WED **Park Avenue Vocal Jazz**
8pm, Lagerquist Concert Hall, Mary Baker Russell Music Center

8 THUR **Regency Concert Finale**
8pm, Lagerquist Concert Hall, Mary Baker Russell Music Center
Season finale with Camas Quintet, Lyric Brass Quintet and Regency String Quartet

9 FRI **1925 African Famine**
2:30-3:30pm, Xavier 114
Presentation on "The Great Hunger of 1925: A Colonial Famine in the Equatorial African Rain Forest (of Gabon)" by John Cinnamon, visiting assistant professor of anthropology. Free

GALLERY EXHIBITIONS

David Keyes
Sculpture
March 11 - April 11 • University Gallery

From Pen to Palette
Poetry and Paintings of Hilda Hatlen
April 3-13 • Scandinavian Cultural Center

May Art Graduates' Show
April 15 - May 18 • University Gallery

University Gallery is located in Ingram Hall. Regular hours are Mon.-Fri., 8:30am-4:30pm. Admission is free. Call 206-535-7386 for information.

The Scandinavian Cultural Center is located on the lower level of the University Center. Regular hours are Tues.-Wed., 11am-3pm and Sun., 1-4pm. Call 206-535-7349

UNIVERSITY THEATRE

Dance Land
April 18 and 19 at 8pm
Professional and student choreographers pool their talents to create an evening of provocative, stimulating and involving dance sequences. An anticipated PLU tradition! Performances are held in Eastvold Auditorium. Tickets are \$3 general, \$2 PLU students. Call 206-535-7359.

Amadeus
May 1-3, 9, 10 at 8pm
May 11 at 2pm
The University Theatre finishes the season with Peter Shaffer's classic story of the incorrigible, but gifted, Wolfgang Amadeus Mozart and his jealous rival, Antonio Salieri. The opulent, engrossing and passionate story is directed by William Becvar. Note: This play is not suitable for young children. Performances are held in Eastvold Auditorium. Tickets are \$7 general; \$4 seniors, PLU faculty, staff, students. Call 206-535-7762.

9 FRI **Choir of the West**
8pm, Lagerquist Concert Hall, Mary Baker Russell Music Center

11 SUN **Forestine Wise Monsen Memorial Concert**
3pm, Lagerquist Concert Hall, Mary Baker Russell Music Center
Student piano performances. Proceeds benefit the Forestine Wise Monsen Memorial Scholarship.

13 TUES **University Symphony Orchestra**
8pm, Lagerquist Concert Hall, Mary Baker Russell Music Center
Masterpiece Series Program IV, featuring organist David Dahl. Debut performance showcasing the Gottfried and Mary Fuchs Organ.

18 SUN **Wind Ensemble: Children's Concert and Ice Cream Social**
3pm, Eastvold Auditorium, admission free

Concerts listed are subject to change. For up-to-date concert information, call the 24-hour concert line, 206-535-7621, or the PLU music office during regular business hours, 206-535-7602. Ticket prices (unless otherwise noted) are \$8 general, \$5 students/seniors, \$3 alumni, and free for 18 and under. Season passes are available.

For information about PLU Connections events in your area, call 1-800-258-6758.



**PACIFIC
LUTHERAN
UNIVERSITY**
Tacoma, WA 98447-0003

If this copy of Pacific Lutheran Scene is addressed to your son or daughter who no longer maintains a permanent address at your home, please notify the Office of Alumni and Parent Relations with his or her new mailing address. You can reach us by phone at 206-535-7415, fax us at 206-535-8555 or send e-mail to alumni@plu.edu with the new information. Thanks!