



PACIFIC
LUTHERAN
UNIVERSITY

SCENE

VOLUME XXVI

NUMBER ONE

FALL 1995

SPECIAL SECTION: NORWAY

ALSO

PLU Student Named International Rotary Scholar
Skyrocketing New Game Company Home to PLU Alums

Where Have All The Leaders Gone?



BY LOREN J. ANDERSON

Over the past three decades, Americans have witnessed a litany of leadership failures permanently eroding our notions of the hero leader.

It began with the national confusion over Vietnam in the late 1960s, continued with Watergate and all "gates" that have followed since the early 1970s, and it echoed through the corporate failures and apparently limitless greed that gave label to the 1980s.

The combined impact of these experiences is that the capacity and integrity of all leaders has been placed on continuing trial.

The frequent failure of moral leadership now fuels an unbounded right-to-know ethic. So, the media's one-time willingness to shield Roosevelt's wheelchair, Truman's poker, and Kennedy's White House trysts have been replaced by an obsession with the most private details of public life. As one observer recently noted, we live in a time when, "The most intimate dimension of privacy, even the most disreputable...goes public." And when it does, another hero dies.

As a long-time student of leadership, my interest was captured when a leading news magazine recently asked: "What is the status of leadership in America?" The unstated question was, "Where have all the leaders gone?"

Sports Illustrated chronicled the personal struggles of three famous coaches with the headline last spring "Leaders of Men?" And in February, *Newsweek* magazine titled a feature on the status of several leadership groups as simply "Exhausted!"

So we ask again, "Where have all the leaders gone?" At Pacific Lutheran University, our admissions literature urges students to come to PLU to "make a difference."

It is an idealistic notion. For we truly believe that with individual talents and abilities, mixed skills and knowledge PLU students have the capacity to stand out in the crowd. We hope graduates leave with the motivation to be an agent of influence, an advocate for change, and a spokesperson for good. Exert leadership wherever you are planted.

And this is an important idea, for PLU ultimately seeks to influence the affairs of the world through its graduates. The PLU 2000 long-range plan proclaims PLU's goal to, "Empower students for lives of thoughtful inquiry, service, leadership and care — for other persons, for their communities and for the earth."

Simply put, our goal is to educate a new generation of leaders. And we seek this goal even in an era when our society is asking, "Where have all the leaders gone?"

Leadership bubbles up in a mix both chaotic and creative, for the world has become much more complex. On a global scale, the end of the Cold War has also ended our dualistic, bipolar view of east and west — good and bad — that gave simple context to issues and gave high moral purpose for action.

But perhaps the most dramatic change in how we understand leaders and leadership is rooted in the evolving shape and style of our organizations and institutions. Hierarchies are passé, networks are in; authoritarian models of leadership are out, participation and collaboration are the watchwords of the day. Leadership is increasingly distributed — not centered.

What of the future? How does all of this relate to the class of 1995? I offer four ideas:

First, As you complete your education we hope you leave well-equipped for leadership and leading.

The skill sets of leadership are numerous — and they are changing. Skills of listening and understanding multiple view points, the ability and the patience to identify points of agreement, to build coalitions, and to encourage consensus will be more and more important.

The key skills of collaborative leadership were once regarded as feminine traits. In "Women's Ways of Leading," Sally Helgesen notes, "Increasingly, motherhood is being recognized as an excellent school for managers...as contracting company president Barbara Grogan put it, 'If you can figure out which one gets the gumdrop, the 4-year-old or the 6-year-old, you can negotiate any contract in the world.'"

Second, we hope that your PLU education has nurtured your faith in the capacity and capability of those around you. Such belief is requisite to leadership. As hierarchies fall, work groups, project teams, quality circles and management teams continue to emerge. All are predicated on a notion of shared leadership that values the potential of each individual. Effective organizations and leaders encourage this potential, for they understand that leadership today resembles a choir and not a solo.

Third, we hope your PLU education has been good for your soul, as well as your mind, because leadership in this age demands the highest standards of personal integrity. Shakespeare encouraged us, "To be not afraid of greatness," but he also warned, "To thine own self be true." And at the core of his advice is the whole notion of integrity.

One final thought, leaders who truly make a difference and leadership that really matters always share one key quality — the commitment to a vision or goal that is larger and more enduring than self-interest and personal benefit.

In that spirit, Martin Luther urged education so, "We might serve God and the world." That is why your soon-to-be alma mater claims as its motto "Educating for Lives of Service" — educating for lives focused on the greater good and on goals that endure.

So as we bid you farewell today we also bid you serve well, and lead well, for the world cries out for influence and impact like yours! May God's enduring blessings be your company through all of life's marvelous journey.

Editor's Note: This article is condensed from President Anderson's May 1995 Commencement speech at PLU.

"Leadership in this age demands the highest standards of personal integrity."

— Loren Anderson

"Simply put, our goal is to educate a new generation of leaders."

— Loren Anderson

SCENE

IN THIS ISSUE • FALL 1995

Presidents Page	2
Special Section: Norway	4-5
Outstanding Alums	6-7
Retiring Faculty	8
Alumni	9-18
Sports	19

ON THE COVER

Norway's Innvikfjord through the lens of David Barnes

Managing Editor
Paul Porter

Editor
Janet Prichard

Associate Editor
Linda Elliott

Photographer
Ken Dunmire

Class Notes Editor
Amy Kramer

Sports Editor
Nick Dawson

Editorial Assistant
Tamara Grunhurd '93

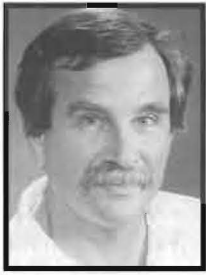
Staff Interns
Karen Larsen '97
Erik Ryan '96

Graphic Designer
Jane Ramsey

Scene (USSN 0886-3369) is published quarterly by Pacific Lutheran University, S. 121st and Park Ave., Tacoma, Wash., 98447-0003. Second class postage paid at Tacoma, Wash. Postmaster: Send address change to Development Data Center, PLU, P.O. Box 2068, Tacoma, Wash., 98447-0003.

Letters to the editor are welcome and should be addressed to Scene Editor, PLU, Tacoma, Wash., 98447, faxed to 206-535-8331, or e-mailed to Scene@PLU.edu. Letters may be edited for clarity and length.

IN THE NEWS



Spicer Named Arts Dean

Christopher H. "Kit" Spicer, communication professor at PLU since 1978, was chosen as the new dean of the School of the Arts. His appointment was effective July 1.

A Charlottesville, Va., native, Spicer earned his bachelor's degree in speech and drama at the University of Virginia in 1970. He then attended the University of Texas at Austin, where he earned his master's degree in inter-personal communication in 1975 and his doctorate in organizational communication in 1978.

Since coming to PLU, he has taught courses in communication, public relations, public speaking, the modern detective novel and others. He served as the chair of the Department of Communication and Theatre from 1983-91.

He succeeds Interim Dean Michael Bartanen.

Norwegians Hail April 29

The Pierce County Council declared April 29 to be "Norwegian Heritage Festival Day" in Pierce County. The Council passed the resolution on April 25, and Audun Toven, associate professor of languages and chair of the Scandinavian Area Studies Program, presented the certificate at the 20th Annual Norwegian Heritage Festival held at the Scandinavian Cultural Center at PLU on April 29.

The certificate will be displayed permanently in the SCC.

PLU Notches 13th International Rotary Scholarship



Jacob Christian "Chris" Bock, a senior at PLU, was awarded an all-expenses paid Rotary Foundation Cultural Ambassadorial Scholarship from the Parkland Rotary Club. He will study at the Taipei Language Institute in Taipei, Taiwan for three months beginning January 1997.

Bock is PLU's third Rotary student ambassador in as many years, and PLU's 13th overall.

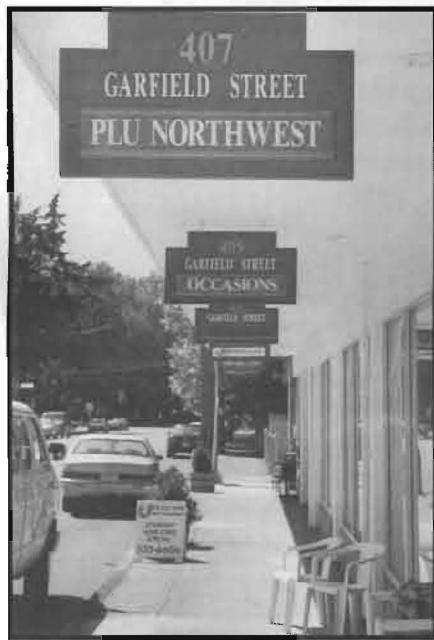
The Port Orchard resident is majoring in chemistry and Chinese studies with a minor in environmental science. He graduates in December 1996.

Designed to promote international understanding and goodwill, the Rotary Foundation Ambassadorial Scholarship was awarded to over 1,200 students worldwide this year.

Annual Yule Boutique

PLU's Yule Boutique, held from 9 a.m. to 5 p.m. on Nov. 18 in Olson Auditorium, features unique gifts from merchants all over the Pacific Northwest. The event also offers soup, sandwiches, and a host of Scandinavian baked goods.

The 20th annual Yule Boutique is sponsored by the University Women's Association and proceeds support need-based scholarships for several PLU students each year.



Bookstore Expands to Garfield Street

The PLU Bookstore opened a branch at 407 Garfield St. in August. PLU Northwest features Northwest food, gifts, clothing and books with a variety of PLU and KPLU imprinted clothing and gifts. KPLU's monthly top 10 play list and corresponding CDs and tapes are also be available.

Hours are 11-8 Monday, Tuesday, Thursday, Friday; 12-6 Saturday and 12-5 Sunday.

Former Regent Dies

Civic leader and past PLU Board of Regents president Michael Dederer — also a prime mover behind the 1962 Seattle World's Fair — died June 24.

Dederer, 89, served for 36 years as president of the Seattle Fur Exchange, the nation's oldest raw-fur organization. He was voted Seattle Man of the Year in 1960 and also received the Brotherhood Award of the National Council of Christians and Jews.

Darren Kerbs Wins SAS Scholarship

Darren Kerbs won a Scandinavian Airlines System (SAS) scholarship for his achievements in music. The senior music education major will travel to Oslo, Norway, for three weeks in January to experience the music of Scandinavia.

PLU Welcomes New Campus Clergy

The Rev. Nancy Connor and the Rev. Dennis Sepper, a married couple from New Brighton, Minn., joined PLU as campus pastors in August.

Connor and Sepper's shared duties include conducting three university chapel services a week and two on Sunday. They will also perform pastoral care duties and oversee the campus ministry council and various other religious organizations on campus.

"We complement each other very well," said Sepper. "Our interests are the same, but our experiences are different. For example, Nancy has done more with large worship settings, and I have concentrated more on small groups. The excitement and challenge of working with young adults — especially at this time of their lives — was an opportunity we couldn't pass up."

Cultural Center Seeks Auction Items

Do you have something useful, fun or frivolous to donate to a worthy cause? Go ahead, be creative! The Scandinavian Cultural Center is hosting a silent auction during its annual Membership Banquet on Nov. 4.

Suggested items include a home-cooked meal, use of a vacation hideaway, classes and tutoring, housewares and collectibles, professional services, tickets for events or travel, etc. The proceeds benefit the SCC, call 206-535-7532.



Grants Fund Variety of Programs

This summer, the university received \$73,399 in grants, here is a summary:

- A \$25,899 grant was given to PLU for professional nurse traineeships from the Department of Health and Human Services, Public Health Service. The grant provides financial support to eligible nurses enrolled in the Continuity of Care and Nurse Practitioner concentrations.
- The U.S. Small Business Administration granted \$12,500 to the PLU Small Business Institute Program for providing counseling and technical assistance services to small business clients.
- The Head Start Training Partnership was awarded a \$15,000 grant from the American Association for Marriage and Family Therapy Research and Education Foundation. The grant supports cross-training among PLU Marriage and Family Therapy Students and Franklin Pierce and Twin Harbors Head Start staff.
- Washington Council for Prevention of Child Abuse and Neglect awarded \$10,000 to the Nurturing Program for Teen Parents and Their Families. Parkland-Spanaway teen parents will be taught parenting skills in group sessions for a span of 20 weeks.
- A \$10,000 grant was given by The Gottfried and Mary Fuchs Foundation for scholarships for students from Pierce County.

Dean Attends Harvard Development Program

Sheri Tonn, dean of Natural Sciences, attended a high-level two-week Management Development Program at Harvard University in June. The program used case studies to examine current issues in higher education.

PLU Prepares for Royal Visit

BY TAMARA GRUNHURD '93 AND
LINDA ELLIOTT

Pacific Lutheran University will honor Her Majesty, Sonja, Queen of Norway, with an honorary doctorate of humane letters for her long-standing dedication to public service and humanitarian concerns. The ceremony takes place at 10 a.m. on Oct. 26 in Olson Auditorium. (We regret that no one can be seated after 10 a.m.)

The ceremony commemorates Queen Sonja and King Harald's first visit to PLU and the university's first royal visit since Harald's father, King Olav V, visited PLU in 1975. Olav also visited PLU in 1939, then as Crown Prince.

While at PLU, the King and Queen will be treated to a walking tour of campus. During the walk, the Queen will dedicate a piece of sculpture created by Artist-in-Residence Kathryn Wold and commissioned in Her Majesty's honor. The sculpture will be placed near the lower campus entrance to the Mary Baker Russell Music Center. The Queen will also be planting an oak tree next to the sculpture.

After the tour, the royal couple will have lunch on campus, then travel by helicopter to Poulsbo in the early afternoon.



Echoes of the Past

Norwegian has echoed in the halls of PLU since the university's establishment in 1890 by Bjug Harstad. Norwegian was PLU's first language, and the first school newspaper, *Pacific Herald*, was printed in Norwegian. As the school became more Americanized, Norwegian gave way to English, and the first strains of Norwegian as a language course were heard in the classroom.

More than a century later, PLU has continued to expand its horizons by offering Chinese studies, global studies, English as a Second Language and other international programs. PLU continues to look forward while remaining aware of its historic roots.

A few Norwegian inventions include: the cheese slicer, the paper clip, skis and the ski binding, fish farming, and dynamite.

Three branches — the Scandinavian Area Studies Program (SAS), the Scandinavian Cultural Center (SCC), and the Scandinavian Immigrant Experience Collection — demonstrate PLU's dedica-

tion to preserving and appreciating Nordic heritage, which has shaped and supported the growth of the university.

Norwegian at PLU

The Norwegian language major was chartered in conjunction with the visit of His Majesty King Olav V of Norway in October 1975. It was part of a grander vision that would eventually showcase the importance of PLU's Scandinavian roots, beginning with the Scandinavian Area Studies Program. Soon after, discussion began regarding the establishment of a Scandinavian center on campus.

Two years later, the creation of the Scandinavian Area Studies Program was official, enabling students to choose a major that offered a broader understanding of Scandinavia and the modern world. Today, this major can be tailored to the students' needs and is complemented with a major or minor in a related discipline.

Audun Toven, associate professor of languages and chair of the Program, encourages students to use this to their advantage. "The SAS Program is a broad and varied line of study which can be used to focus a second major into a Scandinavian perspective," he explains. Political science, English, history, global studies, international affairs, international trade, business administration, and communication arts are just some of the possible pairings.

The program does not require a study abroad experience, but it is highly recommended. Last year, all SAS majors studied in Scandinavia for one semester or more.

Preserving Our Heritage

"A place to celebrate our Nordic roots." That, relates Toven, was the dream expressed by the university and nearby Scandinavian groups for years. The unity of that vision was realized when local Scandinavian communities raised funds and became a partner with PLU in the building of the Scandinavian Cultural Center. The SCC opened in April 1989.

The SCC, located on the first floor of the University Center, offers year-round activities, including language and cooking classes, arts and crafts workshops, lectures, and music performances. Authenticity is important and a majority of the classes are taught by Scandinavian natives. Exhibits are shown continually and have ranged from the famous royal service Danish porcelain, Flora Danica, and a collection of handmade Swedish chairs, to a display of

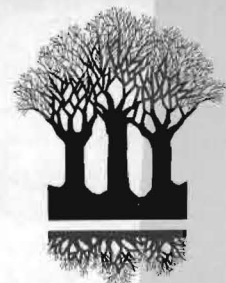
Norwegian immigrant artifacts. Special events such as a Norwegian film festival and annual events like the Julebord (Christmas smorgasbord) are standard fare at the SCC.

Distinguished guests to the SCC have included Swedish Ambassador Anders Thunborg, and Juni Dahr, a well-known Norwegian actress.

Susan Young '92, program director of the SCC, worked extensively in the development of the SCC's programming during its early years. As an undergraduate, Young assisted Toven in editing and publishing *Scandinavian Scene*, a bi-monthly newsletter highlighting events and classes at the SCC. When the SCC was looking for a director, Young was a natural choice.

"It is so exciting being involved with the center. The SCC has really made a name for itself. We've never had to look for activities, entertainment or lectures to fill our calendar. People call us from all over Scandinavia wanting to come and be a part of our program," she said.

continued on next page



PLU Artist-in-Residence Kathryn Wold was commissioned to create a sculpture to commemorate the visit by Their Majesties, the King and Queen of Norway. Titled Generations of Oak the piece will be made of concrete, oxidized steel and brushed stainless steel. The piece is based on text by the artist that reads in part, "So shall we stand, joyful, stretching forever to grow deeper roots and striving always upward to grow closer to the light." Generations of Oak will be dedicated by Her Majesty, Sonja, Queen of Norway, on Oct. 26, 1995.

continued from previous page

A Wealth Of Words

The *Pacific Herold* has found a new home. Joining thousands of other manuscripts, oral and written records, personal memoirs, letters, diaries, photographs, journals and books, this glimpse into PLU's past has been preserved and protected on the third floor of PLU's Robert A.L. Mortvedt Library.

The Scandinavian Immigrant Experience Collection opened in 1986, almost 10 years after a decision was reached to create the collection. This new space offers a home to historical documents and artifacts previously stored in boxes in the basement of the library. The work of cataloging, filing and preserving pieces of the past continues, as donations of immigrant history steadily find their way to the third floor.

The wealth of the collection was unknown until the mid-70s, when the library changed from the Dewey decimal system to the Library of Congress cataloging system. The library staff discovered large numbers of Scandinavian books with Gothic print, signifying the beginnings of a substantial collection.

The collection highlights the interests and perspectives of Scandinavian immigrants to the Pacific Northwest. It is available for undergraduate, graduate, personal and scholarly use.

Norway contributes one percent of its GNP to foreign aid, the highest per capita expenditure of any country in the world.



Students stop to admire the Viking ship prow built next to the Scandinavian Cultural Center.

Grandpa Was Right Reflections On Norway

BY HEIDI (WOLD) TRÆDAL '87

Grandpa has always been a man of few words. Never any frivolous or unnecessary comments, just the plain, untainted truth. Some things never change.

Noticing Grandpa in an especially pensive mood recently, my aunt inquired if there was anything he'd like to say. Only this, "Save your money and go to the old country."

A simple request? No. A lifetime of longing and yearning. A dream of Norway. I know and I understand, Grandpa, because I followed that dream.

Twelve years ago, the only Norwegian I could speak was a garbled version of the Lord's prayer, a bedtime verse, and the number 27 (sounded like "chew a shoe"). I did, however, hear lots of Norwegian over the years, primarily when my grandma and grandpa were telling secrets. What better way to pique a child's interest! I was hooked.

Twelve years and a Bachelor of Arts in Norwegian later, I'm still hooked. Oh sure, I wrote very convincing letters home to Mom and Dad from Norway that I'd be returning to the great 'ole US of A for the remainder of my days — even I was convinced — but it wasn't long before I changed my tune. Something, and someone, kept drawing me back. Perhaps love had everything to do with it: love for my husband, love for my family, love of my heritage.

Just what is the allure of Norway, you ask? I enjoy the fact that driving to the grocery store is a gorgeous, scenic trip. I like being so close to continental Europe that I can travel to Denmark for the day for a mere \$15 — if I pack my own lunch. I love a social system that gave me seven months fully paid maternity leave when my children were born. (Today, mothers get 10 1/2 months leave.) I value a political system that guarantees none of my fellow countrymen will suffer from poverty or starvation. I applaud a country that rewards all citizens with four weeks paid vacation every year. I am proud to reside in a country whose heroes are people that give away winnings to noble causes, or who champion world peace. And I'm awed by a country that celebrates its constitution with school children parading with flags and flowers, not tanks and militias.

Sounds too good to be true? Unfortunately, as with all other countries, Norway also has its drawbacks. I shudder when I have to pay \$5 a pound for ground beef — on sale. I don't even



Heidi, Christoffer, Elisabeth and Trygve Trædal

bother to look anymore when I fill the gas tank for \$55 (about \$6 a gallon). And forget a new car. With 100 percent sales tax on vehicles, plus additional import taxes, a new American-made family car with all the extras costs over \$100,000. Little wonder that Norway has no national debt.

Norway also has other difficulties. With a huge influx of refugees from warring and oppressed countries, Norway now labors with greater questions such as nationalism versus racism.

This is a relatively new dilemma for a country that, until recent years, has been pointing an accusatory finger at America for its racial politics. Due to the ever-increasing gap between the haves and the have-lesses (remember, Norway is a social welfare system), Norway also struggles to maintain a faltering equality.

As the Lutheran state church celebrates the 1000th anniversary of Christianity in Norway, it continues to search for its identity while vacillating between liberalism and traditionalism. The Norwegian school reform of 1994 has opened a whole Pandora's box of dismay and heated discussion. Norway suffers much the same trials and tribulations as any other nation.

Yet there's something that sets Norway apart. The exquisite scenery and fascinating cultural tradition are unique, to be sure. The genuine warmth and hospitality of its people are also undeniable. In the final analysis, however, it all goes back to a dream: a dream of beginnings and endings, a dream of origins and history; of being a piece of the puzzle that makes the picture whole. Perhaps that dream lies only within my own heart, but I'm willing to spend the rest of my life dreaming.

Grandpa, you were right.

Heidi lives in Kristiansand, Norway, with her husband Trygve and their two children, Elisabeth and Christoffer. She is a violinist with the Kristiansand Symphony Orchestra.

"In the final analysis, however, it all goes back to a dream: a dream of beginnings and endings, a dream of origins and history."

— Heidi (Wold) Trædal

PLU Honors Six Outstanding Alumni

BY ERIK RYAN '96

What do a restaurant mogul, missionary nurse, and international law professor have in common? They are three of six outstanding alumni being honored at Homecoming with the Annual Alumni Awards.

PLU
DISTINGUISHED
ALUMNUS AWARD



ROE HATLEN

ROE HATLEN '65, chairman of the board and CEO of Buffets, Inc. in Apple Valley, Minn., will receive the PLU Distinguished Alumnus Award for his continuing achievements in public service and business.

Hatlen is co-founder of Buffets, Inc., a publicly owned restaurant chain that operates Old Country Buffets. Buffets, Inc. was named one of the 200 Best Small Companies in America four years in a row by Forbes Magazine, and was named one of the Top 200 Growth Companies by Financial World Magazine in 1992.

Hatlen earned his bachelor's degree in business administration from PLU in 1965, then went on to earn an MBA in accounting and business statistics from the University of Oregon in 1967.

Hatlen began his career in Eugene, Ore., as a C.P.A. His focus then turned to the restaurant business where he was vice president of finance and treasurer of International King's Table, Inc. He then became chief financial officer for Pizza Ventures, Inc., a publicly owned chain of Godfather's Pizza restaurants.

Over the years, Hatlen has been recognized by PLU and the business community at large. Honors include the 1990 PLU Centennial Recognition Award, the 1993 Minnesota Entrepreneur of the Year Award and the 1993 Mitchell & Company Outstanding Chief Executive Officer Award.

In addition, he has served as a member or in leadership positions on a variety of business, community and church boards. He and his wife Beverly (Thompson '66) have both served on several PLU boards and committees.

PLU
DISTINGUISHED
ALUMNUS AWARD



**J. DAVID
LEANDER**

J. DAVID LEANDER '66, research fellow at Lilly Research Laboratories in Indiana, will receive the PLU Distinguished Alumnus Award for his dedication to developing new drugs to treat psychiatric and neurological diseases. Before taking the position at the Indianapolis-based research laboratory, he spent 10 years in the department of pharmacology at the University of North Carolina at Chapel Hill School of Medicine.

Leander earned his bachelor's degree in psychology from PLU in 1966 and his master's degree in psychology from Western Washington University in 1967. He went on to earn his Ph.D. in experimental psychology and neurobiology from the University of Florida in 1971 and his MBA in management from Indiana University in 1985.

His responsibilities at Lilly include working with the Gastrointestinal Research Action Group, the Central Nervous System Operations Committee, and the Central Nervous System Business Unit. He is also a member and past chair of the Central Nervous System, Gastrointestinal and Urogenital Strategy Group.

He lives in Indianapolis with his wife Kathleen and three children. Much of their spare time is spent working with their church, Pleasant View Lutheran.

PLU
OUTSTANDING
ALUMNUS AWARD



**ANNETTE
STIXRUD**

As a nurse and teacher, ANNETTE STIXRUD '61 has cared for orphans in India, principaled an elementary school in Egypt, and taught English in East Africa. For her extraordinary life service, PLU will honor Stixrud with the Outstanding Alumnus Award.

As the current coordinator for the non-profit Northwest Parish Nurse Ministries in Portland, Ore., Stixrud develops and implements strategies to educate interested nurses throughout the Northwest to be health educators, counselors and integrators of faith and health.

Stixrud earned her bachelor's degree in elementary education from PLU in 1961 and went on to teach first grade in Bellevue, Wash. In 1966 she earned her associate degree in nursing from Clark College and became a registered nurse. She went on to earn her master's degree in health education from the University of Oregon and completed the R.N. re-entry program at Clackamas Community College the following year.

Her nursing and missionary work includes teaching English to nursing students and serving as a missionary in Tanzania, East Africa; founding and developing the Van Allen Rural Integrated Health and Development Project in Kodaikanal, India; working with Mother Theresa's Sisters, the Missionaries of Charity, providing health care to orphans and leprosy patients at the Shishu Bhavan Orphanage in Madras, India; and working as a public health nurse and the elementary school principal for the Schutz American School in Egypt.

While studying as a Fulbright Scholar at Kerkeliche Hochschule in Germany, CHRISTIAN LUCKY '89 was a consultant for Seattle TV stations reporting live as the Berlin Wall came down.

For his work in international law and exceptional academic achievements, Lucky will receive Pacific Lutheran University's Outstanding Young Alumnus Award.

Lucky is an assistant professor of law at Central European University in Budapest, Hungary, the director of the Budapest office of the University of Chicago's Center for the Study of Constitutionalism in Eastern Europe, and is also associate editor of the East European Constitutional Review at the University of Chicago.

PLU
OUTSTANDING YOUNG
ALUMNUS AWARD



**CHRISTIAN
LUCKY**

In addition, he is research administrator at the Russian Science Foundation in Moscow and a member of a two-year project to survey the administration of psychiatric hospitals and prisons in Eastern Europe and the former Soviet Union.

Lucky, who grew up in Parkland, earned his bachelor's degree in classics, philosophy, German, and English from PLU in 1989. He then received a Fulbright Scholarship to Germany for the 1989-90 academic year. He studied history of modern Christianity and was an individual researcher for the Academic Exchange Fellowship.

Lucky earned his master's degree in modern German history in 1991 and his law degree in 1994, both from the University of Chicago. While studying at PLU in 1987 and 1988, Lucky was an undergraduate fellow for two different departments and served as a teaching assistant.

PLU
HERITAGE AWARD



RICHARD MOE

For his career dedicated to service to the PLU and Tacoma communities, RICHARD MOE will receive Pacific Lutheran University's Heritage Award.

Moe, dean emeritus of the School of the Arts and Summer Studies, currently serves as a Metropolitan Park District Commissioner and is a Washington state member of the National Recreation and Parks Association. He is also on the steering committee for the Chihuly International Glass Museum, and a member of Tacoma Rotary.

Moe has served as president of the Tacoma Opera Society, the Tacoma Art Museum, the Tacoma Philharmonic, and the Pantages Center for the Arts. He served on the Washington State Advisory Board for Arts Education and the State Arts Alliance. In addition, Moe was an active member of the Washington Association of Fine Arts Deans as well as the

International Council of Fine Arts Deans.

For four years Moe was chairman of the board of Augsburg Fortress Publishing, the third largest religious publishing house in the country. He is past president of Western Association of Summer Session Administrators, and Honorary Lifetime Member of the North American Association of Summer Schools.

PLU
SPECIAL RECOGNITION AWARD



**FRANK AND NELLIE
HALEY**

NELLIE HALEY and her late husband, the REV. FRANK HALEY, will receive the PLU Special Recognition Award for nearly 45 years of service to the PLU community.

Tacoma native Frank Haley was responsible for developing the Robert A. L. Mortvedt Library that was completed in 1967 and named after the university's eighth president. Haley researched the most distinct and functional libraries at the time and envisioned the need to equip the facility for the future technological advances that exist today.

Haley, who died in 1981 at age 70, was library director at PLU from 1952 until his retirement in 1976. Before taking the director's position, he was a part-time reference assistant at PLU and at the Seattle Public Library for one year and also served as a minister. While at PLU, Haley helped establish the Lute Club and Q Club (PLU's annual giving organizations).

Nellie Haley continually provides significant financial support to selected PLU programs and has created endowments in the family name. Since 1981, the Haley family firm, Brown and Haley — founded in 1912 by Harry L. Brown and Frank's father, J.C. — has donated funds to the Frank H. Haley Business Information Systems Endowment.

CHRISTMAS FESTIVAL CELEBRATION

Friday, December 1 at 8pm, New Hope Community Church, Portland
Saturday, December 2 & Friday, December 8 at 8pm, Eastvold, PLU
Sunday, December 3 at 4pm, Eastvold, PLU
Sunday, December 10 at 3pm, Seattle First Presbyterian Church

MAIL ORDER TICKETS

Tickets: \$6 general; \$3 students, seniors 55 and over; children under 12 free (must have ticket)
(Tickets will be \$8 and \$5 at the door)

_____ tickets @ \$6; _____ tickets @ \$3; _____ tickets for children under 12 = \$ _____ TOTAL

Mail tickets to:

NAME _____

STREET ADDRESS _____

CITY/STATE/ZIP _____

Enclosed is my check, payable to PLU Please bill my Visa MasterCard

ACCT. _____ EXP. _____ SIGNATURE _____

Send this form, payment, and a self-addressed, stamped envelope to: Maxine Pomeroy, Dept. of Music, Pacific Lutheran University, Tacoma, WA 98447. For more information call (206) 535-7618.

1996 ALUMNI COLLEGE

Experience Alaska

Come aboard Holland America's ms Ryndam, and join PLU alumni, parents, faculty, staff and friends for an unforgettable week.

The PLU faculty will be prepared to engage your mind and satisfy your thirst for knowledge. In addition to your time spent in the floating classroom, you will cruise Alaska's inside passage and famous glacier route.

WE SET SAIL MAY 26, 1996. YOU WON'T WANT TO BE LEFT BEHIND!
For more information, call 1-800-258-6758.

Holland America Line

A TRADITION OF EXCELLENCE®

Prices start at \$1,124.00* per person, 3rd and 4th passenger rate discounted. Book early in 1995 to lock in the lowest rates. Deposit of \$350 per person due upon booking.

*Price based on double occupancy. Air add-on to Anchorage and port charges are additional.

Retiring Faculty Honored at Commencement

BY ERIK RYAN '96 AND LINDA ELLIOTT

Marlen Miller (economics), Dwight Oberholtzer (sociology) and Jeanie Sumner (business) retired from PLU in May with a combined 57 years of experience.



Marlen Miller

Marlen Miller, economics chair and professor since 1970, said he already misses the dusty feel of chalk in his hands now that he's retired after 25 years at PLU.

Miller, who taught a variety of economics courses, said he also misses not being able to advise students. "I really enjoyed the kind of students that are at PLU and I loved my colleagues."

The Minnesota native earned his bachelor's in 1962, his master's in 1965 and his Ph.D. in 1967, from the University of Minnesota. His graduate work focused on agricultural economics.

Miller said his greatest achievement was enhancing the PLU Economics Department.

Miller said he doesn't have anything definite planned for the future, but hopes to continue advising and working with students.

Dwight Oberholtzer

During his 26 years at PLU, sociology Professor Dwight Oberholtzer has taught by his own principle, "Whoever explains, learns."



From experience, Oberholtzer knows students who participate and explain their answers during class learn better than students who just listen. "Asking questions is the best part of learning. Thinking through on your own helps you learn better," said Oberholtzer, who taught sociological theory and deviant behavior.

The Indiana native received his bachelor's degree from Wittenberg University in Springfield, Ohio, in 1961. He continued on at the Lutheran School of Theology in Chicago, where he earned a master of divinity degree in 1965. Oberholtzer then earned his Ph.D. in sociology/ethics from the Grand Theology Union in conjunction with the University of California at Berkeley in 1969.

One of Oberholtzer's greatest legacies was the establishment of the Center for Teaching and Learning in 1992. He was the founding director of the center, which promotes faculty development. "The center has represented greater institutional commitment to teaching and learning improvement. It encourages faculty, including myself, to look more closely at teaching," he said.

The center had such positive response from students, they took their own initiative and began their own center, The Coalition for Advancement of Active Learning.

Oberholtzer will be moving to Port Townsend, Wash., and has a book in the works as well as some environmental research planned. He'll also be surfing the Internet, putting together a higher education consulting firm, and conducting various workshops on teaching issues in Vancouver, B.C., for the American Association for Higher Education.

Jeanie Sumner

Think about beer. Now think about the byproducts of beer brewing operations and their impact on the environment. That's exactly what students in Jeanie Sumner's J-term classes in environmental management got to ponder several years ago.

"I'm not sure it was exactly what the students were expecting, but we had a lot of fun," said Sumner, who is retiring after six years as assistant professor in the School of Business at PLU.



Though she boasts four degrees and 30 years of experience in accounting, tax policies and business administration, Sumner is wild about the environment. In addition to the J-term classes she designed and taught, Sumner served on a number of environmental committees while at PLU.

A Portland, Ore., native, Sumner earned her bachelor of science, master of business administration, master of taxation and her Ph.D. in business administration from Portland State University.

Now that she has a little more time on her hands, Sumner is going to spend it volunteering on behalf of the environment. The Audubon Society, The Sierra Club and Washington Water Trails Association are organizations she's currently involved with. She and her husband Vern also plan on taking kayak trips to the Bay of Islands near New Zealand and, closer to home, the Queen Charlotte Islands.

SCENE HONORS RETIRING STAFF PHOTOGRAPHER



Ken Dunmire

Ken Dunmire, PLU's first and only photographer, is retiring after 31 years and 16 days of capturing the campus on film. In the early days, he served as chief photographer for the student paper, yearbook, and sports and public information departments using a cumbersome 4x5 format camera. In later years he focused on sports and public information and switched almost exclusively to 35 mm.

Dunmire has served under five presidents and has seen roughly 29 buildings built on campus. Before coming to PLU in 1964, he worked for a commercial photo studio in Tacoma and before that was an aerial photographer in the Navy. He and his wife Janette have four grown children and a new grandson, and plan on taking several short trips now that they have more time to travel.

Here are a few samples of his work.

Dennis Piernick '67 did his own makeup for a theatre production in which he played a physician (1966).



These four swim team members were always seen clowning around on campus. From left, Jim Baurichter '70, Sully Hester, Steve Bennett, John Bustad '69 (1968).



Hands say a lot about a person. This pair belongs to Ben Peterson, retired construction manager at PLU (1968).

NEWS FROM 1974

Marshall Bratton was appointed special agent in charge at the Anchorage, Alaska, Division of the Federal Bureau of Investigations on June 21. **Joy (Tuff) Liezen** and her husband, David, live in Spokane, Wash., with their five children, Matt, 17, and Olivia, 15, are in high school. Nick, 11, and Hans, 8, are being home schooled. Claire, 3, delights and challenges all. David works for Sonoco Products Company. Joy has begun teaching Spanish to elementary school children through a program initiated and run by parents. After eight years in Oregon, **Ronald Noborikawa** has returned to Washington, serving as financial aid director for Saint Martin's College. He and his wife are expecting their second child in September. **Brian Thomas** accepted a position as manager of program control with Safe Sites of Colorado and has moved from Kennewick, Wash., to Longmont, Colo. Brian and his wife, Susan, have two children, 13-year-old Bethany and 8-year-old Kyle. **Bonnie (Gwynne) Townsend** and her family have moved to Apex, N.C. Her husband, Dennis, retired from the military in New York and he will be flying for American Airlines. They have three children: 14-year-old Jamie, 12-year-old Kevin and 9-year-old Stephen.

GIFTS FROM 1974

Representative: Arden Olson
20% Participation, \$18,568 Total Gifts
Kim S. (Tangeman) Ance ■ Elmer C. Arnsarong ■ Martin F. Babbitt ■ Thomas A. Beck ■ Kathryn Marie (Fredstrom) Beck ■ Brian A. Berg ■ Gary E. Berner ■ Cheryl L. (Jung) Briggs ■ Martha A. Brooks ■ David S. Brown ■ Kris A. (Polda) Buleroff ■ Rebecca A. (Naus) Burad ■ Jacelyn K. (Tebbetts) Campbell ■ Robert L. Casteel ■ Sandy (Likke) Christensen ■ E. Corinne (Caldwell) Cline ■ Marilyn J. Compton ■ James R. Cook ■ Sarah Jean Cooper ■ Joyce C. Crain ■ Mary Lou (Geisler) Eastman ■ Q ■ Maren M. (Bailey) Engb ■ Fay E. (Burnett) Fenske ■ Hester Anne Flattum ■ Diane M. (Druggie) Floyd ■ David T. Frost ■ Q ■ Peter A. Fukuyama ■ Josephine M. Garabato ■ Joan L. (Richter) Gladow ■ Brent B. Goeres ■ Kimberly D. Green ■ Carol Marie (Thorsness) Greenup ■ David L. Greenwood ■ Q ■ Margaret E. Greenwood ■ Q ■ Rickard W. Guild ■ Theodore B. Gulhaugen ■ Lawrence E. Haler ■ Jennifer L. (Lertz) Haler ■ Anne G. (Michelle) Harrison ■ David B. Harshman ■ Logan R. Hazen ■ Thomas R. Heavey Sr. ■ Q ■ George A. Hirschert ■ Robert J. Hoff ■ Turi Kristi Liv (Thompson) Hoverson ■ Christine (Nyberg) Hnfstetter ■ Lois G. Jensen ■ David E. Johnson ■ Q ■ Gene A. Johnson ■ Mark Steven Johnson ■ Kathryn Adams (Adams) Johnson ■ Dana E. (Briec) Keaton ■ Michael W. Kerr ■ Joel G. Klett ■ Margaret D. Kley ■ Karin A. (Arfsten) Koal ■ Michelle J. (Knoph) Krippaehne ■ Karen L. (Mc Clellan) Kuenzi ■ Christian G. Larson ■ Elizabeth H. (Herman) Lee ■ Virginia A. (Shove) Lewis ■ Joy E. (Tuff) Liezen ■ Kristin L. Lindlan ■ Clifford K.W. Lockey ■ James J. Mc Laughlin Jr. ■ Frances L. Mc Pherson ■ Linda Arlene (Polly) Metzler ■ Charles F. Mitchell ■ Gordon S. Mobley III ■ Lark S. (Orvick) Moore ■ Lynn C. Morley ■ Howard E. Motteler II ■ Kristin L. (Gulstad) Mouline ■ Juha B. Mueller ■ Michele M. (Phelps) Nelson ■ Marianne Nelson ■ Glenn W. Neumann ■ Ronald M. Noborikawa ■ Q ■ Carol Ann (Walker) Nohavec ■ Dennis L. Nordin ■ Kevin W. O'Connell ■ John E. Oberg ■ Arden J. Olson ■ Q ■ Richard D. Osness ■ Anne M. (Parkhurst) Ozmun ■ Q ■ Frances A. Peragine ■ Donald Poirer ■ Patricia R. Randall ■ Lucille M. (Goetz) Roberts ■ Linda L. (Nelson) Ronning ■ Douglas B. Ruecker ■ Lisa C. (Heins) Ruecker ■ Robert R. Saarela ■ Elmer G. Sackman Jr. ■ Loran M. Saretske ■ Randy S. Satrium ■ Q ■ Alice M. (Stavlo) Satrium ■ Q ■ Gerald J. Schmeling ■ Q ■ David F. Schmidt ■ Christine L. (Husby) Schrader ■ Carolyn W. (Wilson) Schultz ■ Q ■ David G. Seibel ■ Barbara D. Seiffelshen ■ Q ■ Cynthia Sue Shove ■ Gail M. Sieckman ■ Sharon A. Skar ■ Tamelyn K. Skubinna ■ Q ■ James P. Sletten ■ Q ■ Mary L. Smidt ■ Margaret Ann (Dryver) Smith ■ Allan M. Sorensen ■ Randal E. Spitzer ■ Q ■ Pamela L. Strong ■ Q ■ Dean R. Suess ■ Q ■ Carol S. (Hidy) Suess ■ Q ■ Wendy L. (Hennell) Swanson ■ Q ■ Laurie A. Taylor ■ Q ■ Christine V. (Fleming) This ■ Q ■ Brian R. Thomas ■ Q ■ B. David Thomas ■ Q ■ Gale M. (Anole) Thomas ■ Steven E. Trim ■ Q ■ Susan R. (Peterson)

Troselius ■ Marilyn J. Turner ■ Suzanne E. (Staub) Tushkov ■ Q ■ Ronald S. Tuvey ■ Vickie M. (Stewart) Tuvey ■ Diane Y. (Lloyd) Vrba ■ Sally A. Wallace ■ Kathryn Hamilton Wang ■ Donald M. Wilson ■ Q ■ Koi-Hung Wong ■ Ellen A. Zerby ■ Arthur P. Zurfluh ■ Q

NEWS FROM 1975

Mary Ann Hanlon, a licensed clinical social worker, opened a full-time practice in North Bend, Ore., on April 3. **Robert Hulshouser** is manager of nuclear security at GPU Nuclear Corporation in Parsippany, N.J. **Jean Larson Hurd** of Missoula, Mont., received a master of the theology degree from Luther Seminary on May 29. Jean is serving as campus pastor at the Lutheran Campus Ministry Center of the University of Montana in Missoula. On April 9, **Adrian Kalil** competed in the Australian Ironman, which hosted over 800 competitors from 18 countries. A former PLU swimmer, he emerged from the 24 mile swim in 143rd place, and went on to finish the event in 12 hours and 40 minutes. He is now preparing for the Ironman World Championship in Kona, Hawaii. **Raymond Soule** is chief executive officer of The Doctors Clinic in Bremerton, Wash.

GIFTS FROM 1975

15% Participation, \$14,469 Total Gifts
David A. Aakre ■ Q ■ Maureen A. (Hansen) Aakre ■ Q ■ Joan M. (Perry) Ahre ■ Q ■ Gloria M. (Anderson (Fry)) Anderson ■ G. Michael Arnold ■ Q ■ Robert J. Baker ■ Kim A. Bishop ■ Diane E. Bjorklund ■ Gail A. Bohannon ■ Q ■ Horace K. Bowers ■ Thomas E. Brandt ■ Q ■ Claudia Rea (Rea) Browsers ■ Q ■ Duane L. Carlson ■ Ronald L. Coen ■ Q ■ Dillard Coldiron ■ Rebecca J. (Cole) Cole-Lane ■ Shelley A. (Balda) Cox ■ Q ■ John J. Crocker ■ Cristina M. del Rosario ■ Q ■ Thomas Dey ■ Q ■ Denise E. (Guss) Dey ■ Q ■ Roger A. Downs ■ Gayle A. (Beckstrom) Edwards ■ Debra C. Eisert ■ Q ■ James H. Hadland ■ Q ■ Kathleen T. (Trondsen) Fladland ■ Q ■ Lorita Forlaw ■ Roberta Goodnow ■ Q ■ Barbara Jean Granquist ■ Q ■ William F. Gunkel ■ Q ■ Laurelee Hagen ■ Q ■ Joseph H. Hairfield ■ Marlis M. Hansen ■ Q ■ Dean P. Harrison ■ Q ■ David R. Hewett ■ Karin E. (Berg) Hirschert ■ Charles G. Hosack ■ William C. Howison ■ Robert D. Hulshouser ■ Diane E. (John) Hunt ■ Constance B. (Chambers) Hyndman ■ Q ■ John C. James ■ J. Stephen Jeske ■ Lawrence E. Johnson ■ Patricia A. (Blair) Johnson ■ Q ■ Lynn R. Kahle ■ Kay A. (Overly) Kaps ■ Alene L. (Cogfizer) Klein ■ Luann J. (Connole) Kuecklick ■ Deuanne E. Kuenzi ■ Eric L. Luder ■ Lynette M. (Knapp) Lile ■ Q ■ Nell Weaver Lyford ■ James K. Matthews ■ Mark A. Mc Dougall ■ Q ■ Patricia A. (Camuso) Mc Keone ■ Raymond H. Mc

Master ■ Ann E. Meacham ■ Q ■ Barbara G. (Thompson) Mitchell ■ Fred J. Moore Jr. ■ David B. Nelson ■ David P. Newell ■ L. ci' B. Oksenvaag ■ Q ■ Kathryn M. (Lchmann) Olson ■ Q ■ John D. Palm ■ Nancy Lee (Beam) Palm ■ Stanley Pesis ■ Katherine (Hall) Piper ■ Helen M. Pohlig ■ Q ■ Laura J. (Elliott) Polcyn ■ Q ■ Karen D. (Byrne) Radtke ■ Catherine M. Reilly ■ Q ■ Malcolm J. Rice ■ Q ■ Donald L. Rowberg ■ Q ■ James M. Rowland ■ Q ■ Randolph L. Rowland ■ Q ■ Glenn L. Ryder II ■ Q ■ Ralph J. Sabroe ■ Kari S. (Isaacson) Schlachtenhaufen ■ Kristine L. Severson ■ Gary J. Shilling ■ Mary C. (Mancke) Sletten ■ Q ■ Frank M. Spear ■ Q ■ Patrick A.S. Steel ■ Cheryl D. (Greenstreet) Swain ■ Scott B. Templeton ■ Victoria R. (Garlberg) Teske ■ Tracy N. Totten ■ Q ■ Terry J. (Pfeifer) Totten ■ Peter P. Valuckas ■ Gary Van Heuvelen ■ Victoria A. (Larson) Van Heuvelen ■ Suzanne L. (Kiesow) Wicklin ■ Beth M. (Klavano) Wiegand ■ Q ■ Elizabeth E. (Pine) Willis ■ Q ■ Ellen M. (Madsen) Wood ■ Douglas F. Worth

NEWS FROM 1976

Mark Egbert married Lisa Parsons on March 20, 1993. He was promoted to associate professor of Oral and Maxillofacial Surgery at Harborview Medical Center in Seattle. **Robert Moluf** was hired as an editor in the research department of the Federal Reserve Bank of Minneapolis. He provides editorial support for more than 20 staff economists and assists with the publication of the Federal Reserve's academic journal, the Quarterly Review. He continues to write and edit books part-time. **Ron Shaw** of Orem, Utah, was awarded the Law-Related Education Teacher of the Year Award for 1995 by Governor Mike Leavitt on April 19. This award is given annually by the Utah State Bar Association to a K-12 teacher for "outstanding service to law-related education." Ron is a social studies teacher at Springville Junior High School in Springville, Utah. **Jim Walker** has been promoted by McCann-Erickson Seattle to executive vice president, creative director.

GIFTS FROM 1976

Representative: Steve Ward
19% Participation, \$20,796 Total Gifts
Robert P. Adeline ■ Q ■ Judy M. (Sweetnam) Adeline ■ Q ■ Jeanne M. Anglin ■ Brian D. Bailey ■ Joan L. Baird ■ James D. Bash ■ Q ■ Jeffrey T. Beddingfield ■ Q ■ Margaret (Beckman) Benton ■ Q ■ Cynthia L. (Moen) Bishop ■ Anne L. (Hendrickson) Brandt ■ Q ■ Bradley J. Brauer ■ Ronald E. Brown ■ Steven L. Brown ■ Q ■ Oscar V. Bryan ■ Martin

J. Budinick ■ Michael P. Carson ■ Q ■ Deborah I. (Davidson) Chrey ■ John M. Collins ■ Q ■ Bruce E. Compton ■ Teresa G. (Lund) Conrad ■ Susan C. Critchlow ■ Marianne I. (Bye) Davis ■ Lawrence D. Dralle ■ Chris J. Dulis Jr. ■ Glenn B. Eades ■ Terry W. Edwards ■ Q ■ Cynthia Wilson Edwards ■ Q ■ Mark A. Egbert ■ Q ■ Estill J. Elliott ■ Douglas G.R. Fly ■ Q ■ Carole Rae Engstrom-Lehman ■ Bryan L. Falk ■ Aileen L. Fink ■ Patricia K. (Laakso) Fisher ■ Craig A. Fouhy ■ David P. Gerry ■ Q ■ Lawrence F. Green ■ Q ■ Kimberlea Ann Green ■ Q ■ Malia G. (Meyer) Haglund ■ Vernon I. Hanson ■ Q ■ Verna J. (Powers) Hazen ■ Q ■ David D. Herum ■ Joanne C. (Nieman) Hinkle ■ Q ■ John M. Hunter ■ Q ■ Linda K. (Druggie) Isaacson ■ Q ■ Stephen M. Isaacson ■ Q ■ Thomas E. Jacka ■ Q ■ Elizabeth T. (Schonwald) Jannasch ■ Ray R. Jensen ■ Jeffrey R. Johnson ■ Q ■ Noel T. Johnson ■ Q ■ Paul A. Johnson ■ Sandra S. (Olson) Johnson ■ Christopher E. Jones ■ Karen S. (Johnson) Jung ■ Q ■ Cynthia S. Klein ■ Q ■ Stephen B. Knox ■ Christine H. Koll ■ Stephen P. Kramer ■ Q ■ Christine A. (Berto) Kramer ■ Q ■ Anne M. Kulinsky ■ Frank P. Lamborn ■ Q ■ Eric M. Lemnitzer ■ Q ■ Cheryl Y. Lajebblad ■ Q ■ Chen E. Loiland ■ Betty W. Lott ■ Mark E. Ludwig ■ Janette M. (Soderstrom) Mahoney ■ Q ■ Thomas R. Mahoney II ■ Q ■ Leslie B. (Brownell) Malek ■ Barbara N. (Nemnich) Mead ■ Q ■ Susan French (French) Mooers ■ Peggy J. (Williamson) Nye ■ Elizabeth R. (Klein) Odsen ■ Vincent Ortiz Jr. ■ Rick K. Ouhl ■ Q ■ Christopher S. Pankey ■ Helen L. (Forney) Pelis ■ Kristine A. Pettibone ■ Gregory G. Porter ■ Gary D. Powell ■ Q ■ Barbara I. (Zornes) Powers ■ Nancy K. (Young) Redden ■ P. Gayle (Trask) Reeves ■ Bruce E. Reichert ■ Katharine A. Reigstad ■ Q ■ Steven R. Ridgway ■ Bruce V. Riley ■ Patti Lee Risdal ■ Q ■ Judy L. (Blum) Roberts ■ Debra L. (Nicol) Rowberg ■ Q ■ Darlene L. (Busehert) Rozman ■ Q ■ Linda Ann Siarella ■ Susan A. Schmitt ■ Janette C. Schurman ■ Q ■ Elaine R. (Johnson) Schwartz ■ Stephen C. Seifert ■ Ronald J. Shaw ■ Christon C. Skinner ■ Q ■ Norcne A. Smith ■ Q ■ Rebecca R. Snider ■ Barbara R. Sorensen ■ Robert E. Speicher ■ Daisy M. (Mc Kerson) Stallworth ■ Bernard T. Stark ■ Manfred H. Stibbe ■ Q ■ Paul F. Stuen ■ Q ■ Susan Adams Stutzman ■ Susan E. (Anderson) Templeton ■ Q ■ Raymond G. Thomas ■ Paul T. Ueunten ■ Valerie J. (Balch) Ufer ■ Q ■ Christine J. (Erickson) Urata ■ Q ■ Dennis R. Vanden Bloomen ■ Betty J. Vellias ■ Scott C. Wakefield ■ Q ■ Frank E. Walker ■ James E. Walker ■ Q ■ Gayle J. Walz ■ Q ■ Steven C. Ward ■ Q ■ Tony Whitley ■ Q ■ Ann M. (Apaka) Whitley ■ Q ■ Rick Wigen ■ Q ■ Valorie A. (Andersen) Wigen ■ Q ■ Kim E. Wilson ■ Q ■ Susan E. (Eckardt) Wilson ■ Winston K. Zee ■ Q

NEWS FROM 1977

Virginia Johnson graduated from Luther Northwestern in August 1994. She was ordained on Feb. 5 at Faith Lutheran in Seattle. She is currently serving as associate pastor at St. Mark's Lutheran Church/Narrows in Tacoma, Wash. **Amy Luukkonen** of Shakopee, Minn., received a master of divinity degree from Luther Seminary on May 29. **Mark and Elaine (Hamann '78) Peterson** moved from Oregon to Othello, Wash., because Mark has accepted a call to serve as pastor of Pilgrim Lutheran Church.

GIFTS FROM 1977

Representative: Leigh Eric
15% Participation, \$10,927 Total Gifts
Scott S. Barnum ■ Q ■ Carla M. Bennett ■ Beth Ann Beyers ■ James M. Bingham ■ Q ■ Debra K. (Hors) Bode ■ Q ■ Carol A. (Peterson) Boyer ■ Diane L. (Larson) Brauer ■ Q ■ Christina J. (Lindstrom) Bridson ■ Gretchen A. (Ellertson) Brown ■ Q ■ Jinx J. (Labelle) Brown ■ Q ■ Julie A. Carlson ■ William G. Carnett ■ Q ■ Peggy Chan ■ Q ■ Carol O. (Holden) Chilcoat ■ Sylvia L. (Negstad) Collins ■ Q ■ Stephen W. Conrad ■ Beth K. (Tennesen) Cornish ■ Herold D. Daugs ■ Q ■ Carol R. (Deffner) Deffner-Owren ■ David E. Dorothy ■ Q ■ Martha L. (Schaefer) Ellis ■ Gretchen M. (Jerde) Ely ■ Q ■ David E. Eumons ■ Q ■ Lynne C. (Moehring) Eumons ■ David E. Erickson ■ Q ■ eigh D. Erie ■ Q ■ Janice M. (Irons) Erie ■ Q ■ James C. Evans ■ Dale J. Fixsen ■ Katie A. Fry ■ Lorene (Haas) Girod ■ Q ■ Clover (Grimmins) Gooding ■ Diane E. (Nelson) Grant ■ Anne M. (Mc Luskie) Hafer ■ Jennifer L. (Buchholz) Hall ■ Margit A. (Ferd) Harrison ■ Mark H. Hermon ■ Steven D. Hildebrand ■ Q ■ Christine A. (Baldwin) Hildebrand ■ Q ■ Sumi S. Holman ■ Pamela S. (Hanson) Hunter ■ Q ■ Pamela L. (Halseth) Isakson ■ Q ■ Eric J. Jellum ■ Linda K. (Lofitis) Jensen ■ Deborah Lee (Anderson) Johnson ■ Janice E. (Marshall) Johnson ■ Q ■ Katherine A. (Lorenzen) Johnson ■ Q ■ Inge H. Kalmbach ■ Robert S. Kennedy ■ Q ■ Cindy Klette ■ Paul K. Leung ■ Q ■ Keith B. Lile Jr. ■ Q ■ Theodore L. Linde ■ Cynthia L. (Sovereign) Luebke ■ Andrea E. (Klett) Lynch ■ Joan M. (Nelson) Mattich ■ Q ■ Nancy S. (Holmes) Milliron ■ Jack T. Mohlenhoff ■ Diane R. (Schmitt) Monsen ■ Q ■ Judy L. (Angberg) Nygaard ■ Janis L. Otto ■ Q ■ Rolf R. Paulson ■ Q ■ Sherry P. (Dong) Paulson ■ Q ■ Susan I. (Wood) Pearson ■ Q ■ Karen L. Pickens ■ Debra Jo (O'Neill) Pine ■ William D. Pritchard ■ Q ■ Cody Reeves ■ Scott A. Robbins ■ Q ■ Deborah M. Robbins ■ Gary R. Rohde ■ Laura K. (Reiman) Rothenberger ■ Q ■ Patricia L. (O'Neal) Schmitt ■ Julia K. (Weisenborn) Scott ■ Audrie J. Shagen ■ Deborah J. (Zylstra) Skinner ■ Q

PLU Alumni are doing great things... What's new with YOU?

PLU Alumni

NAME _____ CLASS OF _____

SPOUSE _____ ALUMNUS? IF YES, CLASS OF _____

ADDRESS _____ WORK PHONE () _____
street city state zip

HOME PHONE () _____ IS THIS A NEW ADDRESS? YES NO MAILING LABEL NUMBER _____

BIRTH: CHILD'S NAME _____ M F BIRTH DATE _____

SIBLINGS, AGES _____

DEATH: NAME _____ DATE OF DEATH _____ AGE _____

SPOUSE, IF SURVIVING _____ YEAR, IF ALUMNUS _____

MARRIAGE: DATE/PLACE OF MARRIAGE _____ (No engagements, please)

OCCUPATION: WIFE _____ HUSBAND _____

PROMOTIONS/AWARDS: NAME _____

TITLE OF POSITION/COMPANY/AWARD/DATE ASSUMED _____

OTHER NEWS: _____

Deadline for the next Scene is: October 15
Photos are welcome (preferably B&W) and will be used on a space-available basis.
Mail to: Alumni and Parent Relations Office, PLU, Tacoma, WA 98447-0003; Fax to: 206/535-8555; or E-mail to: alumni@PLU.edu

■ Jeffrey W. Young ■ Karen L. Zapata

NEWS FROM 1994

Per Bakken and Lisa Kay Johnson (91) were married on July 28 in Puyallup. Wash. Per is the circulation manager for The Russian Far East Update in Seattle. Lisa earned her master of education degree in July from Lesley College and is a third grade teacher at Brouillet Elementary School in Puyallup. ■ **Jennifer Berger** was awarded a Fulbright scholarship and will teach English in Germany from September through June, 1996. ■ **Julia Broten** was named account coordinator in the Bellevue, Wash., office of Gofin/Harris Communications where she will work primarily on the Nintendo account. ■ **Jerilyn Dunlap** is in Kenya as a Peace Corps volunteer. She teaches math at a girl's school near Lake Victoria. ■ **Anjanette Knapp** of Big Lake, Alaska, is attending Alaska Pacific University pursuing a master's in environmental science. ■ **Coriander Krause** of Fairview Heights, Ill., is an OB/GYN staff nurse for the United States Air Force. ■ **Michelle Ping** married Jack Tyson on April 1 at Titlow Lodge in Tacoma, Wash. Michelle is a teacher. Jack is employed at Costco. ■ **Erich Schmidt** and his wife, Jennifer, were married in Steilacoom, Wash., in August 1994. Erich is an ensign in the US Navy Reserves while completing dental school. He received one of 10 national full tuition scholarships from the US Navy for school. After he graduates, he will serve three years active duty. ■ **Kelly Thomas** accepted a position with Piper Jaffray Inc. as a marketing assistant within their Piper Capital Management Division in Seattle. She is building a new home in the Federal Way, Wash., area and will be getting married Oct. 21. ■ **Shannon Tilly** is living in Eugene, Ore., and working for Molecular Probes, Inc., a biochemical research and production company that specializes in fluorescent dyes. ■ **Heather (Carlson) Wheeler** married David Wheeler on June 10 in Havre, Mont. David is the head pharmacist at Woods Lake Shore Pharmacy in Kirkland, Wash. Heather is a second-year medical student at the University of Washington. ■ **Mai Yang** of Spokane, Wash., married Ger Moua. The couple announces the birth of Yahi-Tsheng Amadeus on April 9. Mai is working for S. L. Stuart & Associates as an intensive tenant support for developmentally and physically handicapped people in a group home environment.

■ **Jeffrey W. Young** ■ **Karen L. Zapata**

■ **Jeffrey W. Young** ■ **Karen L. Zapata**

■ **Jeffrey W. Young** ■ **Karen L. Zapata**

GIFTS FROM 1994

Representative: Cathy Overland

13% Participation, \$2,701 Total Gifts

Julie L. Aandal ■ Todd L. Alexander ■ Marius Andersen ■ Aaron J. Anderson ■ Christina M. (Grimes) Anderson ■ Tricia A. Ashby ■ Per Bakken ■ Ellen M. Balsstad ■ Monica C. (Bedno) Barnes ■ Jill R. (Jorgensen) Barrett ■ Raphael M. Bartolome ■ Shanna L. Baxter ■ Kristin J. Belknap ■ David T. Berndt ■ Janelle S. (Smith) Bersch ■ Melissa A. Bertocchini ■ Abigail Blankner ■ Leah M. Borg ■ Kimberly A. Bradford ■ Craig T. Bragg ■ Julia P. Broten ■ Kristi-Anna (Weedon) Burton ■ Q ■ Laurie L. Carley ■ Q ■ Heather J. Carlson ■ Mark J. Carrato ■ Adrienne N. Chamberlain ■ Lisa M. Chapman ■ Brad L. Christiansen ■ William J. Cichanski ■ Q ■ Dan Collier ■ Alison M. (Carl) Corrigan ■ Q ■ Sean P. Delaat ■ Gudrun L. Denton ■ Cyndee L. Engen ■ Brenda L. Enger ■ Brent A. Erickson ■ Trent A. Erickson ■ Scott A. Flatness ■ William R. Forristal ■ Tracy M. Fox ■ Heidi Frankmoelle ■ Tara L. (Gatz) Gatz-Nelson ■ Sherry Gardner ■ Patricia S. Gonzales ■ Matthew Gradwohl ■ John D. Guzun ■ Q ■ Torsten Hekkelstrand ■ Siegfried Hess ■ Randall J. Hesse ■ Pamela R. Howard ■ Q ■ Suzanne A. Hoza ■ Ann K. Huber ■ Joy Hult ■ Stephanie A. Hutchins ■ Karl A. Ibsen ■ Julie M. Isensee ■ Kristine M. Johnson ■ Luther Henzak Johnson ■ Amy R. (Jalliff) Jolliff Murphy ■ Shawn W. Karr ■ Leif C. Kasperson ■ Kim A. Kennerling ■ Barbara M. King ■ Deborah A. Kirby ■ Victoria A. Kirschner ■ Hallie L. Klipper ■ Heather Koller Estate (deceased) ■ Kenneth M. Lanyon ■ Erika A. Larson ■ Elizabeth A. Lewis ■ Magnus C. H. Lindberg ■ Mark D. Lindquist ■ Carla D. Lohm ■ Andrew T. McCormick ■ Michele R. McEoni ■ Natalie A. Meyer ■ Jennifer D. Michael ■ Kristina L. Miller ■ Stephen Morissette ■ Charles D. Nottle ■ Leona D. Nugen ■ Jamel A. Nygen ■ Jonathan A. Ortiz ■ Romy N. Osomers ■ Steven D. Otto ■ Catherine E. Overland ■ Einar K. Pedersen ■ Julie Pederson ■ Hye-Ok Perry ■ Douglas K. Peterson ■ Q ■ Kimberly A. Peterson ■ Jon J. Peterson ■ Q ■ Brian S. Peterson ■ Bill M. Phipps ■ Shawn Portmann ■ Gimette M. Rabon ■ Melissa Reed ■ Gina R. Remington ■ Monica L. Ricarte ■ Q ■ Tanya Anne Richardson ■ Daniel J. Roney ■ David

Sandberg ■ Hans-Eric Schulz ■ Teresa A. Shaw ■ Nancy Spagat ■ Wayne B. Spain ■ Lisa A. Springate ■ Debra St. Myers ■ Ralph W. Stewart ■ L. Noel Stott ■ Steven L. Stovall ■ Katrina I. Suhrbier ■ Aaron P. Tang ■ Q ■ Lori (Golfet) Tang ■ Q ■ Diana K. Thompson ■ Shannon L. Tilly ■ Andrea L. Tolay ■ Lois J. Tom ■ Elizabeth A. Tunnell ■ Shana L. Visser ■ Cheryl A. Warwick ■ Mai C. (Yang) Yang-Moua ■ Scott C. Young

NEWS FROM 1995

Bethany Graham was awarded a Fulbright scholarship and will teach English in Germany from September through June, 1996. ■ **Emily Inkpen and Britt Miller** have been selected for membership in the PLU Arete Honor Society for their high academic achievement and commitment to the liberal arts. ■ **Katy McCallum** of Edmonds, Wash., has been awarded a 1995-96 Presidential Scholarship from Luther Seminary. The award is given to individuals who are beginning their studies towards either a master of divinity or master of arts degree at Luther Seminary and covers full first-year tuition. ■ **Brian Neigut** of Austin, Texas, received a Fulbright Scholarship to look at the welfare entitlements of the state of Germany and how they will be affected by changing demographics. ■ **Brian Pochert** married Mary Zylstra on June 17 at Sumner United Methodist Church in Sumner, Wash.

GIFTS FROM 1995

Yngvar Bratsberg ■ Cherise M. Brown ■ Yoolee Cha ■ Delores E. Dearing ■ Taura Fox ■ Marca Robbin Gibson ■ John H. Gillem ■ Melissa M. Griffith ■ Terri Guscott ■ Yasmin Hussain ■ Yun Jiang ■ Kimberly Mac Eachern ■ Barbara J. Mabray ■ Jennifer Mueller ■ Marit L. Rasmussen ■ Q ■ Stefanie Sahmsl ■ Victoria A. Steffen ■ Brett Stevenson ■ Monica L. Taylor ■ Daniel Wittman

GIFTS FROM 1996

Matthew R. Baxter ■ Scott D. Benson ■ Emily R. Blake ■ Brett R. Colahan ■ Jennifer N. Christensen ■ Abigail T. Cooke ■ Darren J. Kerbs ■ Q ■ Julia Little ■ Natalia Martinez ■ Amy Mustan ■ Q ■ Jon Olson ■ Rebecca L. Omland ■ Q ■ Ann M. Read ■ David T. Robinson ■ Stephanie M. Rose ■ Michael Ruff ■ Jonathon Saad ■ Kjell Thompson Jr ■ Deana Lee Wilson ■ Patti Woodland

GIFTS FROM 1997

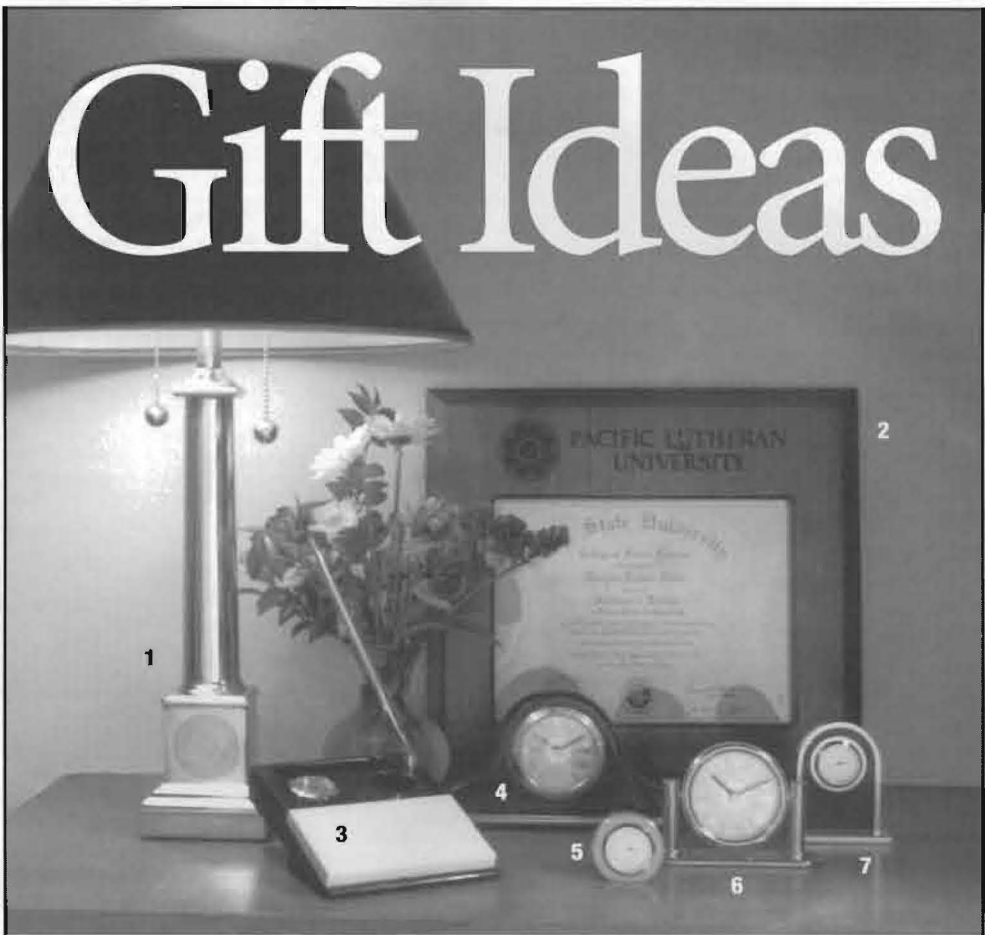
Desiree Neary

GIFTS FROM 1998

Prnaghofer Kelly

IN MEMORIAM

1924 — Inga Benson of Stanwood, Wash., died April 16 at Josephine Sunset Home at the age of 91. ■ **1936** — Eva Jacobson of Tacoma, Wash., died May 21 at St. Joseph's Medical Center at the age of 84. ■ **1937** — William Stanley Young of Puyallup, Wash., died June 10. He was 80 years old. ■ **1948** — Harriet Norem of Friday Harbor, Wash., died May 8. ■ **1949** — Rev. Arne Aakre, retired pastor of Oak Harbor Lutheran Church, died in Anacortes, Wash. April 26. ■ **1950** — Richard "Dick" Colburn of Tacoma, Wash., died May 21 at the age of 72. ■ **1959** — Terrence Paff of Tacoma, Wash., died at the age of 60 on April 27 after a six-month long battle with melanoma cancer. ■ **1969** — Roberta (Allen) Larson of Port Charlotte, Fla., died Dec. 11. ■ **1970** — Kathleen Emerson of Pullman, Wash., died April 21 from cancer at the age of 48. ■ **1973** — James Boyce died on May 29 after a lifelong battle with hemophilia and AIDS. He was 44 years old. ■ **1974** — Dr. Lillian Koro-Johnson of Durham, NC, died March 25 at home following a battle with cancer. ■ **Dr. Gary Strong** of Billings, Mont., died April 24 at home of leukemia. Gary was 44 years old. ■ **1976** — Lt. Col. Alexander Ross Evans died May 25 after a 10-month battle with lung cancer. ■ **1978** — Robert Montgomery of Tacoma, Wash., died on July 8 at the age of 59, after a battle with heart disease. ■ **1987** — Arcemia Navarress Knapp of Tacoma, Wash., died May 21. ■ **1991** — Shelley (Nelson) Wettstaed of Potosi, Mo., died May 8 at the age of 27.



- 1. Brass Lamp** with engraved Pacific Lutheran University logo. \$189.00
 - 2. Walnut Diploma Frame** with engraved Pacific Lutheran University logo. \$35.95
 - 3. Rosewood Desk Organizer** with rose window clock and pen. \$97.95
 - 4. Large Rosewood Clock** with PLU Rose Window face. \$87.50
 - 5. Small Brass Clock** with PLU Rose Window. \$55.95
 - 6. Large Arcadia Brass Clock** with PLU Rose Window. \$90.95
 - 7. Small Clock** with PLU Rose Window. \$65.95
- This merchandise is on a special order basis due to the quality and craftsmanship of the pieces. Please allow extra time for shipping. Thank you!*

ORDER FORM

QTY.	ITEM #	DESCRIPTION	COLOR CHOICE		SIZE	PRICE
			1st Choice	2nd Choice		
Shipping & Handling Up to \$10.00 \$3.00 \$10.01-\$20.00 \$4.00 Over \$20.00 \$5.00						Subtotal
Shipping & Handling (see chart left)						Sales Tax <i>(WA residents must add 7.9% sales tax)</i>
TOTAL						

SHIP TO: (Please print)

Name _____

Address _____

City _____

State _____ Zip _____

Day Phone (_____) _____

Evening Phone (_____) _____

Enclosed is my check, payable to the PLU Bookstore.

Please bill my Visa MasterCard Discover

ACCT. # _____ EXP. _____

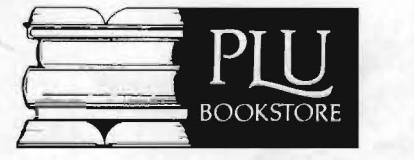
SIGNATURE _____

(Signature required for charge purposes)

✉ **Mail your order to:**
 PLU Bookstore
 Pacific Lutheran University
 Tacoma, WA 98447

☎ **Phone orders:**
206/535-8323

The PLU Bookstore appreciates the support you've given us. We're here for all students, friends, and alumni. If you can't find something you're looking for, please give us a call. Your comments are always appreciated.



OPEN MON.-THURS., 10:00AM-6:30PM • FRI., 10:00AM-5:00PM • SAT., 11:00AM-3:00PM

Pacific Lutheran's storied football program produced four of the seven 1995 inductees into the PLU Athletic Hall of Fame.

The inductees will be formally recognized at an Oct. 13 luncheon that begins at 11 a.m. in Chris Knutzen Hall in PLU's University Center.

The outstanding Gladiators football teams of the late 1930s and 1940s produced many legendary players. Being recognized are Erling Jurgensen, who played fullback in the late 1930s, George Anderson, a tackle in the early 1940s, and Eldon Kylo, a tackle for the Gladiators whose college career in the 1940s was interrupted by World War II. Steve Ridgway, an outstanding linebacker in the mid-1970s, is the other football inductee.

Joining these gridiron greats in the 1995 class are a trio of NAIA All-Americans — swimmer Tami Bennett, track and field performer Mark Smith and basketball player Curt Gammell.



ERLING JURGENSEN

Erling "Snooky" Jurgensen was the starting fullback for the Gladiators in 1937-38, serving as captain of the 1938 squad. He was named to Coach Cliff Olson's All-Time Pacific Lutheran Second Team, behind only current PLU Hall of Famer Marv Harshman.

"If you needed a couple of yards, fourth down and goal to go," said Olson of Jurgensen, "I can't think of anyone I'd rather hand the ball to than Snooky."

Jurgensen graduated from Pacific Lutheran in 1939.



ELDON KYLLO

Eldon Kylo played for the Gladiators in 1941-42 and 1946-47 and was named to Cliff Olson's All-Time Pacific Lutheran football team as a tackle. During his first stint with the Gladiators, Kylo practiced against fellow 1995 Hall of Fame inductee Anderson. The work paid off for him in 1946-47, when he helped anchor an outstanding line. Kylo earned All-Washington Intercollegiate Conference accord both seasons, including first team honors in 1947. As a senior, Kylo was also a Little All-America selection and was voted by his teammates as the Inspirational Award winner.

Kylo served five years of active

Seven Outstanding Athletes Inducted Into PLU's Hall Of Fame

By NICK DAWSON

duty as an airplane navigator during World War II and the Korean War. A 1948 graduate of Pacific Lutheran, Kylo worked as a teacher and administrator in the Franklin Pierce School District from 1953-81, and in international schools in Manila, Philippines, and Lome, Togo, from 1981-91.



GEORGE ANDERSON

George Anderson was another member of Coach Cliff Olson's All-Time Pacific Lutheran team, named as a first team tackle. Anderson played football at Pacific Lutheran College from 1940-42, earning All-Washington Intercollegiate Conference honors in both 1941 and 1942.

Of Anderson and Kylo, Olson said, "Both were big guys, well over six feet and hitting 210-220. Both were smashing and smart in their positions."

Anderson, a 1943 Pacific Lutheran graduate, taught science in Vaughn, Gig Harbor and Snohomish public schools for 36 years before retiring in 1979.

STEVE RIDGWAY

Steve Ridgway earned numerous honors while patrolling the defense from 1973-76 as a linebacker for Coach Frosty Westering's Lutes. Ridgway was the first player to earn NAIA District I all-star honors four straight years and three times was named all-conference and All-Little Northwest. Ridgway was an NAIA honorable mention All-American in 1975 and 1976, and a second team AP Little All-American as a senior. He received the 1977 Jack Hewins Senior Athlete Award.

A two-time captain, Ridgway compiled impressive career statistics. He is credited with 592 tackles (primary and assists), three inter-

ceptions, 21 pass break ups, five fumble recoveries, and most amazingly for a defensive player, four touchdowns. Several of those are still believed to be PLU records.

Ridgway graduated from PLU in 1977 and is in the ministry.

MARK SMITH

Mark Smith capped off an outstanding collegiate track and field career by winning the 1975 NAIA discuss championship with a throw of 177-1. His 1974 throw of 186-6 is still a PLU school record, and he is also on the school's top 10 list in the shot put. He accomplished these feats despite being considered under-sized for the weight events.

Smith was a three-time All-American for the Lutes, placing third in his specialty in 1973 and second in 1974. While wearing the Pacific Lutheran singlet, he won three Northwest Conference discuss titles and one shot put crown. He was twice the district discuss champion, and was both captain and most valuable performer for the 1974-75 Pacific Lutheran track and field teams.

The 1975 PLU graduate has been a public school teacher for the past 21 years, including 19 in the Franklin Pierce School District. He coached Washington High School to two state track and field championships.

CURT GAMMELL

It's a little known fact that Curt Gammell chose Pacific Lutheran over a recruiting offer from UCLA and legendary basketball coach John Wooden. Gammell's decision was a boon for the PLU program from 1962-66. He is one of only nine players in the history of the program to score at least 500 points in a single season, registering 518 while averaging 19.2 points per game as a senior. That same year he led the Lutes with



13.2 rebounds per game, little wonder he was honored as an NAIA first team All-American. He was a third team All-American as a freshman in 1963.

Gammell, a 6-6 forward, twice led the Lutes in scoring (the other two years finishing behind all-time scoring average leader Tom Whalen) and three times in rebounding. Gammell is the fourth-leading career scorer at Pacific Lutheran with 1,695 points, a 16.3 scoring average, and never averaged less than double-figure scoring in a single season. Amazingly, the same can be said about his rebounding. His career rebounding average of 12.0 per game ranks second on the all-time Pacific Lutheran list.

Gammell graduated from PLU in 1966.

TAMI BENNETT

Tami Bennett was a small athlete who made big waves for the Pacific Lutheran swim team. Bennett earned All-America three straight years, placing in the top six in both the 100 butterfly and 200 butterfly at the national championship meets from 1977-79. Her top finishes in the two events came in 1978 when she placed second in both. That same year, she helped the 200 freestyle relay team to a second-place performance as well. In all, Bennett earned All-America honors 10 times.

Bennett's 2:08.83 clocking in the 200 butterfly in 1978 was the oldest women's school record on the books until it was broken this year.

A 1979 graduate of PLU, Bennett is now a journalist living in Seattle.

A plaque acknowledging the 1995 Hall of Fame inductees will be mounted alongside similar plaques for previous inductees on the Walk of Fame, near the front of Olson Auditorium. In addition, individual plaques will be mounted in the Olson Auditorium Hallway of Fame.

The ceremony is open to the public. Tickets are \$9.50 per person and may be purchased through the PLU Athletic Department by calling 206-535-7352. Tickets must be purchased by Monday, Oct. 9, and will not be available at the door.

In addition to the luncheon, the inductees will be honored at halftime of the Oct. 14 Homecoming football game against Whitworth College at Sparks Stadium in Puyallup. Kickoff is 1:30 p.m.



ARTS PLUs

Please clip and save this copy of Arts PLUs.

Through Oct. 5

Faculty Show: Beyond Learning Opening reception: 4-6 p.m., Sept. 10. University gallery, M-F 8:30 a.m.-4:30 p.m. Call 206-535-7582.

Sept. 23

Mt. Rainier Hike A tradition for over 100 years, join the University Congregation for a hike on Mt. Rainier, then a resounding rendition of "A Mighty Fortress" as a finale. 1-10 p.m. Call 206-535-7423.

Sept. 26

Marimba Mommas & the Smooth Tip Jazz Trio Lagerquist Concert Hall, 7:30 p.m.

Sept. 29-Oct. 1

Family Weekend

OCTOBER

Oct. 1-Nov. 14

Norwegian Women in America: Spanning the Generations Shown in conjunction with visit of Queen and King of Norway, SCC. Call 206-535-7349.

Oct. 1

Susan Erickson Recital Lagerquist Concert Hall, 8 p.m.

Oct. 4

Evensong Service with Choir of the West. Trinity Lutheran Church, 5-5:30 p.m., free.

Oct. 5, Oct. 10

Pastor's Breakfast Patricia Killen. PLU Department of Religion. is the speaker. SCC, 8 a.m.-10 a.m. Call 206-535-7423.

Oct. 6

Univ. Jazz Ensemble Lagerquist Concert Hall, 8 p.m.

Oct. 6-8

Scandinavian Days Festival Visit PLU's booth and celebrate Scandinavian Culture. **Western Washington Fairgrounds, Puyallup.** 10 a.m.-5 p.m. Call 206-535-7349.

Oct. 8-Nov. 16

Connections This exhibition features work by PLU art alumni whose roots extend to Norway. Opening reception: 4-6 p.m., Oct. 8. University Gallery, M-F 8:30 a.m.-4:30 p.m. Call 206-535-7582.

Oct. 8-Nov. 16

From These Roots: Reflecting on Heritage A linked show in the Wekell gallery (with Connections) celebrates the diverse roots of the university population. Opening reception: 4-6 p.m., Oct. 8. Wekell gallery, M-F 8:30 a.m.-4:30 p.m. Call 206-535-7582.

Oct. 9-15

PLU Homecoming

Oct. 10

University Symphony Orchestra Marta Kirk, violinist. Lagerquist Concert Hall, 8 p.m.

Oct. 12

Regency Concert Series: Lyric Brass Lagerquist Concert Hall, 8 p.m.

Oct. 13

PLU Homecoming Concert Lagerquist Concert Hall, 8 p.m.

Oct. 15

Early Music Concert Lagerquist Concert Hall, 3 p.m.

Oct. 24

Calvin and Sandra Knapp Duo-Piano Recital Lagerquist Concert Hall, 8 p.m. Proceeds benefit the Raymond Kimura Scholarship Fund. No passes.

Oct. 26

Royal Convocation PLU welcomes their Majesties The King and Queen of Norway. 10 a.m., Olson Auditorium.

Regency Concert Series: Regency String Quartet Lagerquist Concert Hall, 8 p.m.

Oct. 28

Danish Paper Weaving SCC, 10 a.m. Call 206-564-2832.

Music You Hate To Love Halloween Concert Proceeds to benefit the Music Scholarship Fund. Come in costume. Lagerquist Concert Hall, 7:30 p.m. No passes.

NOVEMBER

Nov. 1

Evensong Service with University Chorale. Trinity Lutheran Church, 5-5:30 p.m., free.

Nov. 4

Wheat Weaving SCC Meeting

Rosemaling SCC Meeting Room, 9 a.m.-noon. Call 206-839-7712.

Nov. 15

Norwegian Cooking Class SCC Meeting Room, 10 a.m. Call 206-564-2832.

Annual Trim-the-Tree Day SCC, 10 a.m. Call 206-535-7349.

Norwegian Cooking Class SCC Meeting Room, 10 a.m. Call 206-564-2832.

Nov. 15 - 19

Alpha Psi Omega Theatre Production Call 206-535-7760.

Nov. 16

Regency Concert Series: Camas Quintet Lagerquist Concert Hall, 8 p.m.

Nov. 17

Park Avenue Vocal Jazz Concert Lagerquist Concert Hall, 8 p.m.

Nov. 18

Woodcarving Class SCC, 10 a.m. Call 206-564-2832.

Yule Boutique Olson Auditorium, 9 a.m.-5 p.m. Call 206-535-6318.

Nov. 21

University Jazz Ensemble Lagerquist Concert Hall, 8 p.m.

DECEMBER

Dec. 1

Sankta Lucia Festival Chris Knutzen Hall, 7 p.m. Call 206-535-7349.

Dec. 1

Christmas Festival Celebration Portland, 8 p.m. No passes.

Dec. 2

Wheat Weaving II SCC Meeting Room, 9 a.m. Call 206-564-2832.

Christmas Festival Celebration Eastvold, 8 p.m. No passes.

Dec. 3

Christmas Festival Celebration Eastvold, 4 p.m. No passes.

Dec. 5

Festival of Lessons and Carols Lagerquist Concert Hall, 8 p.m.

Dec. 6

Norwegian Christmas Service SCC, 7 p.m. Call 206-535-7314.

Dec. 7

Composers Forum Student composers present their works. Lagerquist Concert Hall, 8 p.m., free.

Dec. 8

Christmas Festival Celebration Eastvold, 8 p.m. No passes.

Dec. 9

Q Club Fellows Banquet On PLU's campus. *Note change of date.

Mid-year Commencement Olson Auditorium, 10:30 a.m.

Dec. 10

Christmas Festival Celebration Seattle, 3 p.m. No passes.

Dec. 11

Festival of Light Chris Knutzen Hall, 9:30 p.m.

Dec. 16

Third Annual Julefest SCC, 6 p.m. Call 206-535-7349.

"Messiah" Choral Union and Northwest Sinfonietta A glorious performance of Handel's classic work. Lagerquist Concert Hall, 8 p.m. \$18/\$15. To order tickets, call Broadway Center. 206-591-5894. No passes.

Dec. 17

"Messiah" Choral Union and Northwest Sinfonietta Lagerquist Concert Hall, 3 p.m, see above.

Danish Singalong SCC, 6 p.m.

HOMECOMING SCHEDULE

HOMECOMING

1995 LEGENDS OF OUR TIME

THURSDAY, OCTOBER 12

Songfest

FRIDAY, OCTOBER 13

Hall of Fame Luncheon
Heritage Lecture
Reception/Concert - Olson/Lagerquist
Comedy Night (ASPLU) - Eastvold
Midnight Munchies - Red Square

SATURDAY, OCTOBER 14

PLU Author Book Signing
Residence Hall Open Houses
Tours of Campus (Music Building)
KPLU Live Broadcast
Scandinavian Art Exhibit

SATURDAY, OCTOBER 14(cont.)

Academic Open Houses
Golden Age Brunch
Tailgate Party
Football Game
Reunion Parties (5, 10, 15, 20, 25, 30, 35, 40, 50)
Homecoming Dance - Olson Auditorium

SUNDAY, OCTOBER 15

Worship, Eastvold.
Brunch for Arts alumni
Brunch for Campus Ministries alumni
Brunch for all alumni

Call 1-800-ALUM-PLU for reservations.

Danish Singalong SCC, 6 p.m.

Oct. 17

Rhythm! University Wind Ensemble performs rhythmic works for winds. Lagerquist Concert Hall, 8 p.m.

Oct. 19

Fall Choral Concert Lagerquist Concert Hall, 8 p.m.

Oct. 19-21, 27-29

Theatre Production PLU Theatre presents "The Time of Your Life" Call 206-535-7760.

Room, 6 p.m. Call 206-564-2832.

SCC Annual Membership Banquet SCC, 6 p.m. Open to the public. Call 206-535-2349.

Nov. 7

Laila Stein Lecture SCC, noon. Call 360-923-1471.

University Symphony Orchestra Kathleen Vaught Furner, hornist. Lagerquist Concert Hall, 8 p.m.

Nov. 11

Church Youth Day

Nov. 19

Color! The University Wind Ensemble & Concert Band perform music that explores the timbre of the winds. Lagerquist Concert Hall, 3 p.m.

Nov. 19-Dec. 10

Launch Sequence The finalé for PLU's December art graduates is a mixed media exploration of the expanding frontiers of space, time and creative endeavor. Opening reception: 4-6 p.m., Nov. 8. University Gallery, M-F 8:30 a.m.-4:30 p.m. Call 206-535-7582.

Theatre Events

Tickets for University Theatre productions are \$7 for general and \$4 for students, seniors and PLU faculty and staff. Productions are held in Eastvold Auditorium and performance times are 8 p.m., Thursdays through Saturdays, and 2 p.m. on Sundays. For information and tickets call 206-535-7760.

Music Performances

Unless otherwise indicated, ticket prices are as follows:

\$8 general admission
\$5 Non-PLU students & seniors
\$3 PLU Alumni
Free tickets to children under 12

Season Passes: Save on the cost of concert tickets. The Music

Department is offering a season pass which can be used to order tickets to concerts of the pass holder's choice for the 95/96 Lagerquist Concert Hall inaugural season. No limit on the number of concerts.

Season Pass Option:

	General	Seniors
Individual Pass	\$50	\$30
Family Pass	\$125	\$75

Individual Season Pass:

Allows the pass holder to order one ticket to an unlimited number of concerts during the 1995/96 concert season.

Family Season Pass: Allows each member of the immediate family the choice of attending an unlimited number of concerts for one low price for the concert

year. Some concerts are excluded, labeled "no passes." Concerts are subject to change. For current concert information, call the Music Department Concert Information Line, 206-535-7621, or the Music office at 206-535-7602 during normal business hours.