

Three Represent PLC at Convention In Minneapolis

Dr. S. C. Eastvold, PLC president, in company with Dr. Phillip E. Hauge, dean, and Dr. William L. Strunk, head of the Biology Department, are today attending a three-day convention in Minneapolis. The conference, which is sponsored by the Board of Education of the Evangelical Lutheran church, division of Higher Education, ends tomorrow night.

Hauge and Strunk will both give addresses at the confab and Dr. Eastvold will act as a consultant and will speak twice Sunday morning in St. Louis Park, Minnesota. "The Christian Core of a Christian Curriculum" will be the theme of Hauge's address. Dr. Strunk will speak on "Science Confirms the Word of God." The keynote address will be delivered by Dr. William Young, executive secretary of the Board of Education, American Lutheran Church.

On Monday, Dr. Eastvold will confer with educators in the middle west and on Tuesday he will pay a visit to his friends at Eau Claire, Wisconsin, where he served First Lutheran Church before coming to PLC. The congregation now has a membership of more than 4,000.

Leading educators from throughout the United States and Canada will take part in the program and discussions. Colleges represented in addition to PLC are Concordia, St. Olaf, Augustana (South Dakota), Luther College, Capital University, and Luther Theological Seminary.

Cast Announced For Coming Play

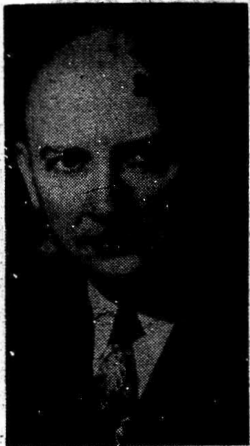
Cast selections for the Alpha Psi Omega production, "The Late Christopher Bean," by Sidney Harward, were made by the directors Wednesday evening. The play, to be presented early in December, is being directed by Malcolm Soine, and his assistants will be Hazel Johnson and Howard Worley.

Taking the lead part of Abby, the New England housemaid of the Hackett family, will be Kathy Eide. Judd Doughty will portray Dr. Hackett, the undistinguished northern doctor, and his seemingly cultured wife will be played by Charlotte La Qua. Their two daughters, Ada, a girl of 26, and Susan, a pretty girl of 19, will be characterized by Anita Hellbaum and Evelyn Semmons, respectively. The village painter and paper-hanger will be played by Jim Wiggins and Bob Johnson, who will portray Tallant, a young, smooth New Yorker. The roles of Rosen, the too-affable Jewish gentleman, and Davenport, an elderly, distinguished gentleman, will be filled by Jim Traynor and Murray Martin.

Rehearsals are now underway, under the direction of Malcolm Soine. Other committees and chairmen will be announced at a later date.

Spurs Elect New Prexy

Upon the resignation of Judy Larson, president of Spurs, Joyce Gens, the former vice-president, was chosen to take her place. Elected to fill the vice-president's chair was Peggy Holbrook.



Pictured above is Dr. E. W. Turner, Dean of the U. of W. Medical School, who will speak at the Linne Society banquet, Nov. 13.

Choir to Appear Twice In Jason Lee Auditorium

The Jason Lee Junior High School auditorium should be quite a familiar place to the members of the Choir of the West by Friday, Nov. 9. Professor Gunnar J. Malmrin and the Choir are slated for appearances there this Sunday, Nov. 4, and Nov. 9.

Sunday night, the Choir will sing in a mass choir, composed of the choral groups of the cooperating Lutheran churches, at the Tacoma Reformation Rally at 8 p.m. Parishioners of Lutheran churches of every synod will be in attendance.

Rev. Fischer, Spiritual Emphasis speaker at PLC two years ago, will present the Reformation sermon. The ALC pastor resides in Port Angeles.

Again on the following Friday evening the 58-voice group will sing at Jason Lee. The occasion this time will be a program sponsored by the traveling International Missionary Crusade.

Featured speakers will be Dr. Oswald J. Smith, well known Canadian clergyman, of the People's Church of Toronto, and Lieutenant General Sir Arthur Smith, chairman of the British Evangelical Alliance.

The program is under the auspices of the Evangelical Churches of the area and the National Association of Evangelicals.

No Parking of Autos In Front of Old Main

become a grave problem again this year and if the situation isn't remedied, fines will soon be assessed by the Sheriff for violation," Art Broback announced this week.

Parking is not allowed in front of the building between the hours of 8 a.m. and 5 p.m.

Rieke Gives Thank-You

With last Saturday's Student Congress now an event of history, and with favorable comments about the day's activities still being received, I want to take this opportunity to publicly express my appreciation to all those individuals and groups who in any way helped to make the Congress the success it was.

The gratitude of the college and the Department of Speech is extended, but in a special way I personally wish to thank the Spurs, the Debate Squad, the scribes, clerks, Congress officials, committee chairmen, and all others who assisted. It is to me a personal favor, and a job well done.

BILL RIEKE

The Mooring Mast

VOL. 29

PACIFIC LUTHERAN COLLEGE, FRIDAY, NOVEMBER 2, 1951

NO. 7

PLC, CPS Plan Rally Before Totem Pole Tilt

PLC and CPS students will converge on 9th and Broadway in downtown Tacoma next Friday afternoon for a gigantic pep rally in preparation for the Totem Pole gridiron clash between the cross-town rivals next Saturday night in Lincoln Bowl.

Plans for the rally were completed last night in a conference between the student councils of the two colleges in the PLC Student Union building.

A joint committee will complete arrangements early next week for the boom-boom event. Features of the meeting will be numbers played by

both bands, talks by Logger Coach John Heinrich and PLC's Mary Harshman. The yells, which the cheer leaders hope will be heard from Stadium high school to Lincoln Bowl, will give each student a chance to verbally project their confidence in the two teams.

Police escorts will lead caravans from both institutions to 9th and Broadway where the noise will commence at 3:15 p.m. All classes at PLC will be dismissed at 2:30 so that everyone can make it on time.

It is hoped that the Young Men's Business club will release the coveted Totem trophy, which goes to the winner of the annual conference tilt between the Lutes and Loggers, to be displayed at the rally.

The Gladiator gridsters have yet to defeat a John Heinrich-coached eleven, and this year the Lutes are definitely out to capture the Totem Pole to brighten up the PLC trophy case.

PLC Gallup Poll Shows A Republican Trend

PLC students and faculty members chose Dwight D. Eisenhower as the probable winner in the 1952 presidential election, which is just one year away. Ballots were cast Wednesday in the PLC version of the Gallup Poll.

They voted for their preferred presidential candidate and for the person they thought would win the election.

"Ike" won in the larger division, polling 39.3 per cent of the votes. Harry Truman was runner-up with 16.5 per cent. Following in descending order were Robert Taft, 13.7; Earl Warren, 6.9; Harold Stassen, 3.8; Douglas MacArthur, 2.7; Thomas Dewey, 1.9; Ester Kefauver, .2, and Paul Douglas, .2. 14.8 per cent gave no preference in the matter.

A marked Republican trend was

shown, with 68.3 per cent of the "ayes" going to them, and a meager 16.9 total to the Demos.

The reaction towards the other candidate, "Who is your preferred candidate," was not as definitely pro-Eisenhower. He led in this division with 21.4 per cent, just 1.4 percentage points in front of Harold Stassen. Republicans won by a landslide in this division, also. 81 per cent cast eyes for them and for the Demos, 14.6. Only 4.4 were undecided on this issue.

The breakdown on votes went like this after Eisenhower and Stassen: Warren, 18.7; Taft, 11.3; Douglas, 6.6; Dewey, 5.2; Truman, 4.7; Kefauver, 3.0; MacArthur, 3.0; Luther Youngdahl, 1.1; Fuller Warren, .3; and Henry Jackson, .3.

An interesting sidelight to the results is the fact that only 4 of the 36 faculty votes were for Democratic candidates. Eisenhower also garnered the largest total of faculty votes. Taft and Warren were the next most popular candidates.

Jack Selfors Elected Prexy of PLC Band

Jack Selfors was recently elected to serve as president of the LC band. Other officers elected to help govern the affairs of the band are Ron Sterland, vice-president; Priscilla Asper, secretary-treasurer; and Donna Flynn and Margaret Hamilton, librarians.

Practicing new maneuvers for half-time activities at the PLC-CPS game is presently keeping the band busy.

Poster Design Class Visits Art Galleries

Members of the poster design class recently visited the CPS art galleries to view a calligraphy (penmanship) exhibition. On display were examples of Gothic, Roman, modern, and old English manuscripts.

The class has practiced the vertical manuscript type of lettering for nearly a month, and is now working on the difficult old English style. India ink and speedball pens are the materials

New Furnishings Transform Lounge In Student Union

Probably the most universal conversational topic on the campus today is the ultra-modern refurbished lounge in the SUB. The newly furnished lounge was initiated last night by the AWS Fireside.

All new furnishings were placed in the lounge Thursday afternoon. Bright colored sectional furniture, tables and chairs, floor lamps, drapes and a piano have transformed it from a virtual lunchroom to a lounge that students will feel proud to show to anyone.

Funds for the furnishings were provided mostly by the Student Body treasury, with the balance coming from the school.

Bids for the job of making custom-built furniture expressly for it were given last summer by plant manager Ken Jacobs. Frederick and Nelson of Seattle was given the job and the furnishings were delivered yesterday.

Mr. Albert Mykland, bookstore manager, urges the cooperation of all students in keeping the lounge orderly and neat at all times.

Linne Society To Banquet Nov. 13 At Crawford's Grill

"The Marine Room of Crawford's Sea Grill will be the locale for the annual Linne Society banquet to be held November 13 at 6:30 p.m.

Tickets for the affair, which will center around a Thanksgiving theme, can be purchased from members. Price of the duets is \$1.90. According to Grace Foege, chairman of the event, only 100 tickets will be sold. She urges students to buy them early, since last year more than 100 were sold.

Dr. E. W. Turner, Dean of the University of Washington Medical School, will be the featured speaker for the evening.

"Lick CPS" Suckers

A chance to personally lick CPS will be given each student on Friday, Nov. 9. Under the sponsorship of Spurs, suckers bearing the memento, "Lick CPS," will be sold.

PLC to Be Host for First F.T.A. Convention, Saturday

The PLC chapter of the State Future Teachers of America will be host to the first convention of the newly-formed group, to be held here tomorrow. All colleges and junior colleges in Washington have been invited to send representatives to the one-day conference. Delegates from the PLC chapter are Ron Douglass and Ruth Moe.

Mr. Morton Johnson, president of the Washington Education Association Administrators and superintendent of the Lake Washington schools, will be the guest speaker of the afternoon. State FTA President Dave Berg will formally open the conference at 1 p.m. Following a business meeting, five discussion groups will talk over specific problems of mutual interest to the represented chapters.

After the banquet at 6 p.m., the

delegation will hear the principal speaker of the evening, Montgomery Johnson, public relations director for the W.E.A. Concentrating on the theme, "Public Relations," the conference aims at uniting the western division of the new state FTA into a more efficient and energetic organization.

PLC students, Phil Thorlinton, state FTA treasurer, and Bob Knutson, chapter president, are responsible for the planning of the regional get-together. Betty Hansen is arranging the details of the banquet.

The Mooring Mast

Published every Friday during the school year by students of Pacific Lutheran College.
 Entered as second class matter, October 2, 1925, at the Post Office at Parkland, Washington
 Office: Student Union Telephone: GRanite 8611
 Subscription price—\$1.50 per year

EDITOR DAVE NESVIG
ASSOCIATE EDITOR JOANNE SCHIEF
BUSINESS MANAGER ERVING SEVERTSON
EXCHANGE EDITOR ERNEST JOHNSON
SPORTS EDITOR JERRY MARTIN
PROOF EDITOR JANET FRANKLIN
AD MANAGER PHYLLIS GRAHN
CIRCULATION MANAGER MARYLYN SANNERUD
ADVISER URAL HOFFMAN

REPORTERS—Joanne Poencet, Phyllis Grahn, Joyce Gem, Gloria Krivage, Delores Hagevik, Ernest Johnson, Jerry Martin, John Martin, John Holm.

Printed on the Campus by La Crosse Printing Company

Feature Attractions

A cozy fireplace with candlelight and soft music set the scene for the first all-school Fireside, sponsored by Associated Women Students last night in Student Union. The social gathering was highlighted by the performance of Beverly Allen and the Swing Trio, Anita Hellbaum, Ann Knorr, Joann Huchttoen. Coffee and cookies were served throughout the evening by refreshment chairman Barbara Espedahl. Joann Huchttoen and her committee are to be commended for a successful event.

Tassels

Tassels were hostesses to last semester honor roll students at a coffee hour Tuesday from 4-5 in the Viking Room. Maxine Anderson and Helen Jensen were presented with tassels by Rosella Albrecht, president. Miss Wickstrom welcomed the girls, commended them for their high scholarship, and urged them to continue their present standard. June Nysteen was chairman of the event. Other officers of Tassels are Helen Huswick, vice-president and ICC representative, and Beverly Sjoboen, secretary-treasurer.

Halloween

Goblins, witches and many weird characters roamed through the dorm on Halloween, joining the girls in their many impromptu parties. Dottie Barrett, Esther Brudie and Naomi Hochstatter were co-hostesses at a planned "witches brew." Guests attending were Shirley Thompson, Helen Jensen, Edna McCall, Elenore Hanson, Anne Stray, Joan Gardner, Marilyn Lunde, Ellen Hessen and Marilyn Sannerud.

Patronize Your Advertisers

Ex-PLCite Visits Camps in Europe

Experiencing some of the dreams that many people wish about has been the opportunity of Miss Myla Lund, ex-PLC student of Renton, Wash. Her dream took the form of a summer trip to Europe.

Scanning through material in the PLC library one day last year, Miss Lund came across several articles that told about camps abroad in which young people were given the opportunity to work together for a few weeks each year. It so interested her that she inquired about the camps and the possibilities of attending one. Finally she decided to attend one of them and as a result spent this summer touring Italy, Germany, Norway (where she visited with Dick Svare, PLC graduate), Holland, France and numerous other countries.

She sailed June 27 from Montreal on the S.S. Vollandam enroute to Rotterdam. Four weeks were spent in sight-seeing.

Miss Lund, who will return some time in November, was one of 15 young Americans who participated in the ecumenical work camp program which is sponsored by the Work Council of Church Work Camps with headquarters in New York City.

A wide variety of projects was undertaken, from laying foundations for refugee houses to construction of play ground facilities in rehabilitation camps. The campers also took part in a program which included worship, Bible study, discussion of social and political issues, and recreation as well as manual labor. The camp lasted from July 23 to August 23.

Formerly from Minot, N. D., where she graduated from high school, Miss Lund has attended PLC and the University of Washington. Recently she

Prexy Says . . .

Have you seen the student lounge lately? Better take a look, it's really nice!

We think we can keep the new furnishings in the lounge looking good if we use the room just for a lounge and not a lunch room. More chairs and tables will be set up in the outer part of the coffee shop for those who eat their lunches in the Student Union building.

We are very happy to announce the forthcoming joint pep rally with our "friends" across the way, CPS. Next Friday afternoon the cheer leaders are planning a pep rally at 2:30 on the front steps of Old Main and immediately following a caravan of cars will parade downtown where we will meet the CPS caravan at 9th and Broadway.

The full cooperation of the student body is necessary to make this event a success. Students will be excused from their classes at 2:30 next Friday IF they don't have a test scheduled for that period and IF they will take part in the rally.

It's the big game of the year, so let's get behind Coach Harshman and the players.

—Art Broback

worked in the record department of the Renton hospital, where her father is the superintendent, to earn sufficient funds for her European trip. She is the daughter of Mr. and Mrs. J. C. Lund of Renton.

On her return to the states, Miss Lund plans to visit cities along the Eastern coast before coming home.

Patronize Your Advertisers

Mrs. Malmin to Give Organ Recital

Mrs. Dorothy Brann Malmin will appear in an organ recital this Tuesday at 2 p.m. in the Weyerhaeuser Hall in Tacoma. The musical matinee will be sponsored by the Ladies Music club and all students holding Ladies Music club concert tickets are urged to attend.

Plans are also being made by Mrs. Malmin for an organ program at Conway, at 8 p.m. on November 18. This evening program will be sponsored by

the Conway Lutheran church.

At the ELC/Luther League convention in Seattle this summer, Mrs. Malmin, also one of the organ instructors on the campus, presided as the official organist for the entire week. Mrs. Malmin is an active member of the Tacoma Organ Guild and is the adviser of the local PLC Organ Guild, which she helped to organize on the campus several years ago.

Other appearances will be made by Mrs. Malmin and many of her advanced students during the year.

Delicious Hamburgers

at the **HANDOUT**
 129th & Pacific Mt. Highway

Specializing In All Kinds of

Ladies' Fine Ready-to-Wear

Alma Ayers, Inc.

BR. 2741

McCay's Ice Creamery

Try Our Milkshakes

PARKLAND XXX DRIVE-IN

MERCHANTS LUNCH—55c

Full Course Dinner—11 to 9

HOURS: 7:00 a.m. to 12:30 a.m. Week Days
 Friday: 7:00 a.m. to 2:00 a.m.
 Saturday: 7:00 a.m. to 3:30 a.m.

Breakfasts

Parkland

Two Blocks North on Mt. Highway

Parkland Pharmacy Rexall Drugs

Pacific Ave. & Airport Road
 New Bank Corner

ONE HOUR FREE and EASY PARKING
 Complete Banking Services
 New Lincoln Branch

Puget Sound National Bank
 MEMBER, FEDERAL DEPOSIT INSURANCE CORPORATION - FEDERAL RESERVE SYSTEM

WEDDINGS - CORSAGES
 FUNERALS
STELLA'S FLOWERS
 Artistry in Flowers
 Parkland Center GR. 7863

The Clay House

Classes Start:
 Thursday Nite, 8:00 to 10:30
 Week days, 2:00 to 6:00

Parkland Center

Stop In at VERN'S

for a
DELUXE HAMBURGER
 Old Fashioned Fish & Chips
 Home-baked Pies & Cakes
 Full Fountain Service
Ninth & Pacific

SWEATER CENTER

For GUYS and GALS!

EST. 1884
Washington HARDWARE CO.
 918 - 24 PACIFIC • 522 - 10MERCER
SPORTS SHOP

Permanent Waving—Hair Styling

MARGIE'S BEAUTY SALON

Back-to-School Hair Styling

Parkland Centre GR. 7475



S-T-R-E-T-C-H
 your shoe dollars with

STAR BRAND

Men, here's a shoe that's long on quality and short on cost. Star Brand Shoes give you smartest styling, easy comfort and long wear ... and fit into your budget without a bulge!



Style 27961
 Brown
 8.95

Soine's Parkland Shoe Store

411 Garfield Street Al and Malcolm Soine (In the Parkland Centre Building) GR. 3526

LUTE LOCKER DUST.

By Jerry Martin

This is it, folks—the loaded column with two big game predictions instead of the usual one.

Since there will not be a publication put out next week, we'll try and give you a quick rundown on the impending games with Pacific University and the College of Puget Sound.

Tomorrow the Lutes will converge upon the Oregon boys in a non-conference tilt which may prove to be a hard-fought battle, but we'll stick with what we said last week. If the boys continue playing the same caliber of ball as they have been playing the Lutes, should win their fifth straight.

Prediction for tomorrow's game: PLC 19, Pacific U. 6.

PLC vs CPS

One week from tomorrow the Luteville warriors will meet the CPS Loggers in the Lutes' last conference game of the year.

This promises to be the game of the year in the Evergreen conference. If the Lutes overcome the strong Logger defense and scatter their offense, they will be undisputed champions of 1951. If the Loggers, who have everything

Ex-Lute to Coach U. of W. Jayvees

Duane Beren PLC grad of '50, and two-year basketball letterman, was recently appointed junior varsity coach at the University of Washington by head mentor, Tippy Dye.

Beren was a starting guard on Marv Harshman's five, which journeyed to Kansas City last year. He was a high school teammate of Gene Lundgaard and the Anacortes duo helped make hoop history at PLC.

The U. of W. isn't a strange place to Duane. He spent his freshman year there, and was one of the top scorers on the freshman squad. He is presently studying journalism at the Seattle institution.

to gain and nothing to lose, can bowl the Lutherans over, there will be a tie for the top conference honors.

The Gladiators should be at nearly full strength for both of these games, but we look for the reserves to see plenty of action.

This is probably the hardest game of the year to pick the winner and the right score of, but as long as we're going out on a limb we might as well go all the way and give PLC a 13 to 0 win over the Loggers.

Lutes vs. CPS In Last Game Of Season, 10th

Two powerful teams will clash when the Luteville Gladiators meet the Lumberjacks of CPS in the Evergreen Conference game of the year at Lincoln Bowl a week from tomorrow.

The Lutes have maintained an undefeated league year and hope to keep it that way.

CPS, however, has dropped a game and hopes to beat the Lutes, thereby clinching a tie for first place.

Harshman's boys have had a week's rest and with tomorrow night's game under their belt they should provide

EVERGREEN CONF. STANDINGS

P. L. C.	4	0	0	1.000
C. P. S.	3	1	0	.750
Western	2	1	0	.666
Whitworth	1	2	0	.333
Eastern	0	2	0	.000
Central	0	3	0	.000

a strong defensive bulwark and a driving offensive machine.

The Lutes still have the defeat they suffered at the hands of the Loggers in the Kings-X game earlier this year fresh in their minds and are out to have revenge.

Both teams depend upon their ground force more than their aerial attacks and should provide the spectators with a topnotch display of both defensive and offensive ball playing.

Glads Invade Oregon Tomorrow Night For Non-League Game With Pacific U.

Pacific Lutheran will tangle with a tough Pacific University eleven at Forest Grove, Ore., Saturday night.

This game will prove to be an interesting affair as both teams have

shown power in previous games this season. Pacific is currently in the running for the championship of the Northwest league, and according to early reports, the Badgers have a strong offense.

Coach Harshman sat in on Pacific's 20-12 win over Lewis & Clark last Saturday and came away impressed with Pacific's offensive power.

So for the past couple of days, Harshman has been working the boys hard on defense. As for the showing in their last game, Coach Harshman is not too well pleased, and said, "We're likely to get knocked off Saturday."

The Lutes and the Badgers have played only two common foes this season. Pacific lost to Western by an 80 count; PLC in turn defeated the Vikings 14-0.

The Badgers then bounced back from the Western defeat to beat Central 20-0. The Lutes also played the Wildcats and blasted them 25-0.

Physically, the Lutes are still working under a handicap. End Glen Huffman and Fullback Al Fink will probably miss the Pacific game.

Harshman, however, hopes to have the capable duo ready for action a week from Saturday when the Lutes play a crucial game with CPS.

That game will close out the season for the Lutherans and will mark the second time this season that both teams have met. In the annual Kings-X game, the Loggers downed the Lutes 20-0. But since then PLC is a much improved team, and is determined to win the championship. They have proved this in the past, and are now all alone in first place. Should the Lutherans win this big game on Nov. 10 they will gain a clear-cut claim to the conference championship.

Monday, Nov. 5—Ivy Hall vs. Central Parkland and Eastern Parkland vs. Suburban.

Tuesday, Nov. 6—Clover Creek Hall vs. Ivy Hall and Central Parkland vs. Eastern Parkland.

Thursday, Nov. 8—Clover Creek vs. Central Parkland.

Cent. Parkland Bests Eastern 14-0, Hold Lead

	Won	Lost
Central Parkland	6	0
Ivy Hall	4	1
Clover Creek Hall	4	2
Eastern Parkland	3	2
Suburban	2	4

Central Parkland still remains the team to beat as the second week of intramural touch football comes to a close. In this week's play they downed Eastern Parkland 14 to 0 with Don Krecki and Rick Daniels scoring on passes from Wally Feax. Eastern's Olsen was caught behind his own goal for a safety and two more points for Central.

In their other game Central struck past Suburban by 54 to 0. The scoring saw Don Krecki catch three touchdown passes; Bob Ross, two; and Rick Daniels, one. Wally Feax threw all six passes and to top it off ran one over for six more points. Rich Gogel got into the scoring, too, by going over on a short plunge.

In the other games so far this week Ivy Hall pasted Suburban and Clover Creek Hall defeated Eastern Parkland 12 to 8.

Bob Curtis and Norm Schnaible did the scoring for Clover Creek. Curtis caught a pass for six and Schnaible ran 20 yards around end to complete the scoring. Jerry Hefly intercepted a pass and ran 20 yards to get Eastern's only touchdown of the day. Ted Sieks, Clover Creek halfback, was caught behind his own goal to add 2 more points for Eastern.

The close score was not a true indication of the game as Clover Creek was constantly in possession of the ball.

Next week's schedule:

College Golf Course
Under New Management
Golf Rentals and Sales
Caddies and Soft Drinks
OPEN YEAR AROUND
Gerald and Helen Monson
Phone GR 8358

Parkland Realty Co.
Parkland, Washington
Res. Phone GR 6210
Office Phone: Jennie L. Grodvis
Tacoma
GR. 7232

PARKLAND RADIO-T.V. CLINIC.
See JIMMY ROGERS for Sales and Service
508 Garfield St. Parkland, Wash.
One-half Block East of Pacific Lutheran College
Pick-up and Delivery

PATTY ANN BAKERY
GR. 3330
Opposite the Bank Hours: 9 to 9 Airport and Pacific Ave.

DILL HOWELL Sporting Goods
929 Commerce St. Tacoma
MA. 5665

DANIELS HARDWARE
On the Highway Corner
PACIFIC AVE. & GARFIELD

BUSCH'S
Drink in
EVENING
Come as you are... sit in your car—
• Fresh strawberry Soft
• Krems oodles
• Hot dishes etc.
• Giant creamy rich shakes, 24 different flavors, 5¢; milk 5¢.

THREE-DAY SERVICE
On Laundry, Cleaning and Repairing
24-HOUR SERVICE AT PLANT
Fashion Cleaners
PICK UP and DELIVERY
GA. 3372 3820 Yakima

Patronize Your Advertisers
LEWIS GARAGE
LUBRICATION
WHEEL BALANCING
Corner of Garfield and Pacific
GR. 9980

The Latest and Finest in
RECORDS and SHEET MUSIC
TED BROWN
MUSIC CO.
1121-23 Broadway Tacoma

Socrates preached:
"THE BEST SEASON FOR FOOD IS HUNGER. FOR DRINK, THIRST"
Cicero
Score one for Soc. He's absolutely right... thirst knows no season. That's why anytime is the right time for Coke.



DRINK Coca-Cola 5¢

BOTTLED UNDER AUTHORITY OF THE COCA-COLA COMPANY BY
COCA-COLA BOTTLING, INC., TACOMA, WASH.
© 1951, THE COCA-COLA COMPANY

LIBERTY RESTORED



A significant development on the American scene during recent years is the general observance of the Reformation festival. A day which for hundreds of years was celebrated chiefly by Lutherans has recently come to be recognized as a heritage which all Protestants have in common.

This is as it should be. For when Martin Luther nailed his 91 sentences to the door of the Castle Church of Wittenburg, October 31, 1517, challenging the ecclesiastical authorities of his day to a debate on controversial issues, he began a movement which was destined to achieve the basic Christian freedoms which are now the common heritage of many Protestants.

Luther taught nothing new. He taught no doctrine which Christ Himself had not taught. But he did insist that men must teach and believe everything that Christ has revealed.

He insisted that all religion must be based on the Bible alone. 2 Tim. 3:16. He insisted that man is saved by grace alone, that salvation is one hundred per cent a free gift of God's mercy. Rom. 11:16. He insisted that man becomes a partaker of this free salvation alone by faith in the atonement of the Savior. Gal. 2:16. And he insisted that the individual Christian has direct access to the father-heart of God through Jesus Christ without any human intermediary. 1 Tim. 2:5.

If Luther were living today he would no doubt point modern Protestantism to the words of Scripture, "Stand fast therefore in the liberty wherewith Christ hath made us free, and be not entangled again with the yoke of bondage." Gal. 5:1.

PACIFIC LUTHERAN COLLEGE

Dr. S. C. Eastvold, President Parkland, Wash.

Typewriter Rentals

SPECIAL STUDENT RATES



SALES and SERVICE

ROYAL Office and Portable Typewriters

ROYAL TYPEWRITER CO.

510 So. 11th. BR. 7875

ART'S SHOE SHOP

Dyeing and Repairing Saddle Refinishing

On Garfield St.

Christmas Cards

GET THEM NOW THEY'RE OUT

Berquest Stationery 944 Commerce

BREAKFAST — LUNCH — FOUNTAIN

HOURS: 7:30 A.M. TO 6:00 P.M.

N. A. BOTSFORD

756 St. Helen's

TUNE IN YOUR OWN CAMPUS RADIO THEATRE

6:30 EVERY WEDNESDAY NIGHT

(DURING SCHOOL YEARS)

- ★ College of Puget Sound
- ★ Pacific Lutheran College
- ★ Stadium High
- ★ Lincoln High
- ★ Sumner High
- ★ Puget Sound High

KMO
1360 on Your Dial

- ★ Visitation Villa
- ★ Federal Way High
- ★ Clover Park High
- ★ St. Leo's High
- ★ St. Martin's College

Inchroad 878
9:30 A.M. Saturday

TACOMA CITY LIGHT

Net Cost . . .
Low

Life insurance is issued to Lutheran Men, Women, and Children ages from birth to 65. The members of Lutheran Brotherhood OWN the society, and they ALONE receive the earnings. There are NO stockholders.

Lutheran Brotherhood

Legal Reserve Life Insurance for Lutherans

MINNEAPOLIS 2,

CARFIELD STREET
Phone Granite 5221

HERMAN L. KERN, President

JESS W. THOMPSON
NYER URNESS

MINNESOTA

PARKLAND
Washington

Build Your Estate Now!

Your Future Starts Today

Boy Scout Course Here

PLC and the Mount Rainier council, Boy Scouts of America, are co-sponsors of an eight-week "academy of scouting," scheduled for eight successive Thursdays except Thanksgiving, starting this Thursday night. The sessions will be held in the Old Chapel building.

The course is open to all registered scouters in the southeast district, including the area between Pacific Avenue and the Puyallup valley, from Dash Point to Roy.

The course will simulate the program of a typical scout troop so that the potential scoutmasters will go through all the activities a Boy Scout goes through, including an overnight camping trip. At the end of the academy, the graduates will receive a basic scoutmaster's training certificate.

Two members of the PLC staff, Dr. Robert Olsen and Walter Suter, will be members of the academy faculty, as "scoutmaster" and "senior patrol leader," respectively. Adviser will be Byron Johnson, assistant executive of the Mt. Rainier council.

Planning sessions are now going on under the leadership of Dr. Harold Ronning for a similar academy for Cub leaders.

Patronize Your Advertisers

Neal E. Thorsen

TRICKS - JOKES - MAGIC
Costumes - Tuxedos - Serpentine
926 1/2 Broadway MA. 4861

C. O. Lynn Co.

MORTUARY
717 TACOMA AVE. Phone MAIN 7745

The Place to Meet Your Friends is the

College Coffee Shop

Winston to Speak In SUB Tonight

Miss Mildred Winston, a board of education member of the United Lutheran Church of America, will speak to women students of PLC at 7:00 this evening, on full-time Christian Service.

Miss Winston, who is now making a tour of the West coast, will also be available for individual conferences this afternoon from 2 to 4 in Dean Hauge's office. She may be consulted on any type of Christian service for women. Students who wish to sign up for a conference should do so in Mr. Holstad's office in Old Main.

Miss Wickstrom stated that Miss Winston was at one time doing missionary work in China and is now visiting colleges and churches of the Pacific Synod. Miss Winston also gave the message at chapel service this morning.

Laziness may not be a crime but it leads to a great many of them.

STATIONERY
39c a box
Young's Gift Shop
Parkland

Need An Oil Change?
Gladiator Service
Parkland, Washington

SEARS
TACOMA WASH.

LaCrosse Printers

CARDS
POSTERS
ANNOUNCEMENTS

Located in Old Chapel Building, On the Campus

Printers of Your MOORING MAST

POCHEL DISTRIBUTING COMPANY

140TH & PACIFIC

PHONE GR. 3624

MOBIL

Stove and Diesel Oils

AUTOMATIC FILL-UP SERVICE
Westinghouse and Frigidaire Appliances

Raymond Electric Company

Engineers - Contractors
1922 Pacific Ave. BR. 1712

Centre Cleaners

Nyer and Neva Urness
Parkland Centre Building

California Debate Tournament Set

According to Mr. Theodore Karl, the "traveling debate squad for the California tournament will be announced some time this week. He plans to take several debate teams and also to enter the members individually in the oratory, extemporaneous speaking, impromptu and discussion divisions.

The participants will be picked from the general squad and will leave November 17. The tournament will last three days.

1951 SNOW SLATE

Nov. 3—Pacific U. at Forest Grove, Oregon (N)

Nov. 10—Puget Sound at Tac. (N)

*Denotes Evergreen Conference game

Parkland Grill Home-made Pies

OPEN:
7:00 a.m. to 10:00 p.m.

GARFIELD STREET

Need a Haircut?
Parkland Barber Shop

Parkland Taxi
GR. 8192
SPECIAL COLLEGE RATES