

# Scene



## Fund Drives Nears \$4 Million Mark . . 2

Major gifts, church and alumni response keep drive on campaign target.

## Enrollment, Fiscal Pictures Bright . . . . . 3,10

Pacific Lutheran continues to enjoy increasing strength in enrollment, financial support and academic programs.

## 'Real World' Ideas . . . . . 5

The PLU Executive Development Program provides practical services for businesses large and small.

## Alumni Honors Planned . . . . . 14

Dr. Eugene Strandness, Dr. Jon Wefald and Richard Svare will receive Distinguished Alumnus honors Nov. 8.

## Cover

PLU's gridiron Lutes opened the season as the top NAIA Division II team in the nation!

*PLU cheerleaders: "We're No. 1!"*

Published six times annually by the Office of University Relations, Pacific Lutheran University, P.O. Box 2068, Tacoma, WA 98447 (USPS 417-660). Second class postage paid in Tacoma, WA. Postmaster: Send address changes to Development Data Center, PLU, Tacoma, WA 98447.

# Capital Drive Nears \$4 Million Mark

*Architectural Planning Underway; Improvements Already Apparent Across Campus*

By Jim Peterson

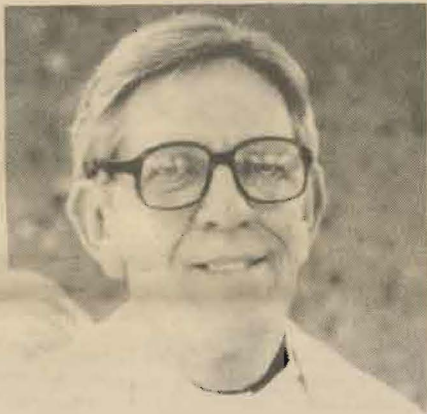
Eighteen months ago, when the Pacific Lutheran University "Sharing in Strength" \$16.5 million capital fund campaign was an-

nounced, new science and fine arts facilities and other major campus improvements were little more than dreams.

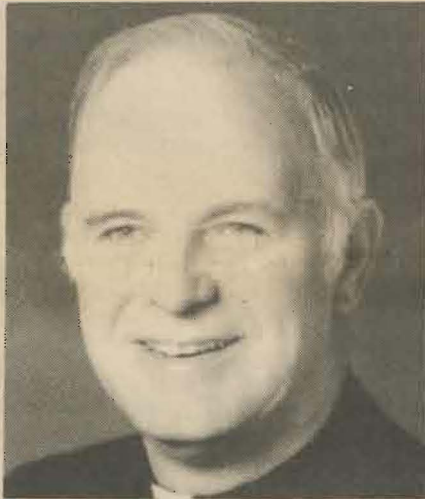
It certainly was not an ideal time economically to undertake such an ambitious venture. Inflation was and continues to be high, money was tight, and the federal

funds that had helped modernize the campus in the '60's were no longer available.

Yet the need was becoming critical and President William O. Rieke and the PLU Board of Regents were determined to meet that need. The "Bold step of faith" was taken after many months of



Rev. Dr. A.G. Fjellman



Rev. Paul J. Baughman



Rev. Llano Thelin

Not pictured: Waldo Lindberg

*Campus Phase Of Campaign Also Underway This Fall*

## LCA Joins PLU In 'Sharing In Strength' Capital Campaign Effort

When major corporate and foundation donors begin to seriously consider the size of gifts that ultimately will spell the success of the PLU "Sharing in Strength" capital fund campaign, they are very likely to be interested in the degree of support and enthusiasm demonstrated by the university's major constituencies.

In the case of Pacific Lutheran, those constituencies are alumni, the Lutheran church, and the campus community itself.

The gratifying response of the North Pacific District, American Lutheran Church and early alumni returns this past year have helped in providing positive responses to those inquiries. This year further answers will be gleaned from campaigns among the congregations of the Pacific Northwest Synod, Lutheran Church in America and among the campus faculty and staff.

At a recent meeting, synod bishop Rev. Dr. A. G. Fjellman observed that "most synod pastors and congregations generally

feel that PLU is our college. Thus we are pleased to join hands with our sister ALC church body in Pacific Lutheran University's 'Sharing in Strength' drive."

Fjellman has appointed Rev. Paul J. Baughman, Rev. Waldo C. Lindberg and Rev. Llano Thelin to spearhead the synod campaign. This summer the three have been actively recruiting top campaign leadership.

Training workshops for the leadership teams are being held this fall. The leaders will return to their "clusters" of congregations to begin recruitment of congregational representatives and presentations to church councils.

Following further organizational work at the congregational level the campaign will be conducted this spring with an anticipated completion date of June 1.

According to PLU President William O. Rieke, the campaign is a further testimony of the cooperation between the LCA and the university. The relationship goes back many years on an informal

basis. It was formalized by a covenant in 1976.

The LCA has long been represented on the PLU Board of Regents, along with the ALC and alumni, and countless services are rendered in both directions regularly and continuously, Rieke observed.

The campus campaign leadership is also being organized this fall. Athletic director Dr. David Olson heads the campus campaign steering committee, which also includes Dr. Marlen Miller, economics; Dr. Erv Severtson, psychology; David Christian, Office of Radio and Television Services; Shirley Zurfluh, business administration; and Ted Pursley, Office of Finance and Operations.

The campus campaign will be in its most active phase this month.

"The percentage of supporters among faculty and staff has historically been a university strength," Rieke said. "It continues to influence and inspire other potential benefactors."

preliminary groundwork and feasibility studies.

This fall Pacific Lutheran is \$4 million, or nearly a quarter of the way, toward the campaign goal, with several major gifts anticipated in the relatively near future.

Architects are busy with preliminary proposals for both new science and fine arts facilities. In the meantime there have been a variety of structural and programmatic improvements on campus that have been a result of the campaign effort to date.

For example:

- A new faculty office/classroom building on lower campus is being used by the mathematics department. This addition freed space in Tingelstad Hall for additional student living quarters.

- New studios for KPLU-FM are completed and in use. The campus radio station, 88.5 mhz, is the most powerful non-commercial station north of San Francisco with a range covering most of western Washington.

- A new all-weather track and field facility was completed last year. It is used by both the campus and the community.

- Remodeling has provided additional theater facilities in Memorial Gymnasium and a dance studio in Olson Auditorium.

- Additional remodeling projects have relieved cramped office conditions in a number of areas.

- PLU scholarship and endowment funds have been strengthened.

- Dollar income from donors in 1979-80 was 69 percent higher than that received the previous year.

A fund campaign of the magnitude of "Sharing in Strength" takes on some of the characteristics of a jigsaw puzzle as the special concerns of individual and corporate donors are fit into the total picture, according to Luther Bekemeier, vice-president for development.

"These special concerns may directly or indirectly fulfill our stated campaign goals, but all contribute significantly to the "Sharing in Strength" effort," he said.

The first year of the campaign was devoted primarily to a broad effort among the congregations of the North Pacific District, American Lutheran Church.

"The support of the church is gratifying," Bekemeier added. "Not only are we assured of surpassing our church campaign goal of \$3 million, but the campaign vastly increases awareness of PLU and its programs which will pay dividends in future years."

The alumni campaign begun last year is continuing. Over \$600,000 has been received from alums working and contributing in all phases of the campaign to date, but the figure represents only a small fraction of the more than 12,000 alumni households.

## New Q Club Giving Level Established

On July 15, 1980 the officers and directors of the Q Club voted to create a new giving level in the organization at \$40 per month or \$480 per year. Those who contribute at the new level will be called Associate Fellows of the Q Club.

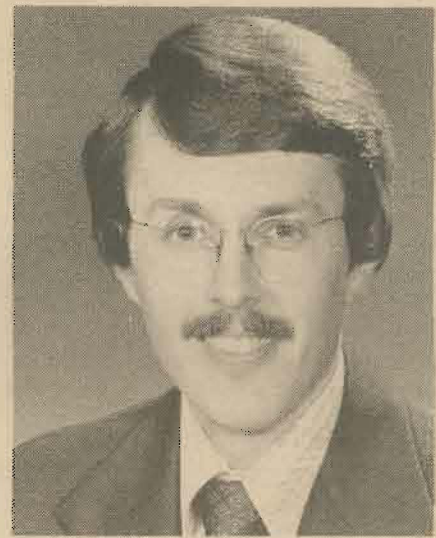
Q Club contributions provide unrestricted gifts and scholarships to the university's Annual Fund. Prior to this time there have been only two giving levels: Q Club members, who contribute a minimum of \$20 per month or \$240 per year, and Q Club Fellows, who contribute \$1,000 or more per year.

John Aakre, associate director of development, noted that "the Q Club directors see this new level as a way to encourage those members giving at the minimum level of \$20 per month to consider increasing their contributions. They felt that the new level represents a more natural and realistic jump in the giving progression than the current gap between members and Fellows.

"It is equally important," Aakre continued, "to be able to recognize and thank those people who are already giving more than \$480 per year but who are not able to reach the level of Q Club Fellow.

The new Associate Fellow level will allow us to acknowledge those people who are literally 'going the second mile' for PLU by giving at least twice the Q Club minimum."

David Berntsen, director of development, noted another reason for the new level. "When we first formed the Q Club back in 1972," Berntsen related, "twenty dollars a month bought more than twice as much as it does today. I personally hope that many of those who helped PLU in the first few years of the Q Club will be able to increase their giving to this new level to help us keep up with inflation."



John Aakre

## Enrollment, Fiscal Picture Bright As 90th Anniversary Year Begins

Pacific Lutheran University began its 90th anniversary year Sept. 9 on a positive note, with increases in class enrollment and temporarily overflowing residence halls.

Figures available in mid-September showed a 1.4 percent increase in credit hour production over a similar date last year. According to registrar Charles Nelson, the figure is up in spite of a slight decrease in total number of students, reflecting a higher percentage of full-time students.

That factor, in turn, contributes to a larger overflow than usual in residence halls, although the problem is normally rectified during the early weeks of the school year, according to housing director Rick Allen.

There is some attrition, he pointed out, and other students elect to move off campus.

Part-time enrollment figures are not yet final, Nelson indicated.

The increase follows on the heels of a successful summer program which saw a 4.1 percent increase in students and a 7.3 percent increase in credit hour production, reported Dr. Richard

Moe, dean of summer studies. Summer enrollment of 1,520 was the highest since 1975, he indicated.

The number of international students enrolled at PLU has reached 67, 28 percent more than last fall, Tina Cables, international student coordinator, pointed out.

A new computer and new telephone system have been installed on campus during the summer to strengthen services to students and the public, according to PLU President Dr. William O. Rieke.

Other services added during the past several months include an administration building elevator and ramps at many campus entrances to improve access for handicapped students. Improved campus signs and bus service and a reorganized campus safety and information office will help make student life more pleasant during the coming year, he indicated.

The university's growing academic and fiscal strength is reflected in all areas across campus, he told the faculty fall conference. (See the President's editorial page.)



During a visit to Pacific Lutheran University this summer, National Public Radio president Frank Mankiewicz, left, chatted with PLU President Dr. William O. Rieke and KPLU-FM student announcer Kelly Allen.

## KPLU-FM Becomes Affiliate Of National Public Radio

KPLU-FM at Pacific Lutheran University has been accepted as an affiliate of National Public Radio, according to NPR president Frank Mankiewicz.

Mankiewicz, former press secretary to the late Sen. Robert Kennedy and Sen. George McGovern, explained that NPR affiliation gives non-commercial radio stations a broad choice of programs, including live musical performances from around the world, news magazines and commentary by such persons as Pauline Frederick, congressional hearings, British Broadcasting Corporation programs and reviews by film and jazz critics.

The non-profit network distributes programs to 250 stations nationwide, Mankiewicz indicated during a visit to the PLU campus in July.

Headquartered in Washington, D.C., NPR is a product of legislation authored by Sen. Warren Magnuson D-Wash. in the early '60s. The legislation created a system of public broadcast services as an

alternative to commercial radio and television stations.

Earlier this spring KPLU-FM became the most powerful non-commercial radio station north of San Francisco with an increase from 40,000 to 100,000 watts. It broadcasts 18 hours a day on weekdays and 19 hours a day on weekends.

"We see our affiliation with NPR as a way to enrich and enhance the quality of programs we offer our listeners," said KPLU-FM general manager Judd Doughty. He added the NPR provides means for the station to complement PLU's liberal arts educational philosophy by "helping people understand themselves and the world around them."

With a capability to reach over two million listeners in seven Washington counties, KPLU-FM reaches into areas not served by other NPR stations in the state, he added. The station's current programming format features classical and jazz music, news and public affairs.

## PLU Receives \$300,000 Bequest From Hilda Schumacher Estate

Pacific Lutheran University has received a bequest valued at over \$300,000 from the estate of Mrs. Hilda Schumacher, according to PLU President Dr. William O. Rieke.

The bequest includes half interest in a 372-acre farm in Whitman County under terms of a charitable remainder unitrust.

Mrs. Schumacher, formerly of Spokane, passed away in early July 1980. She had lived for the past 10 years at Panorama City in Lacey. A Fellow of the PLU Q Club, she had frequently participated in campus activities during the past decade.

Her unitrust had been providing income to her during the latter years of her life. Upon her death the assets reverted to the beneficiaries.

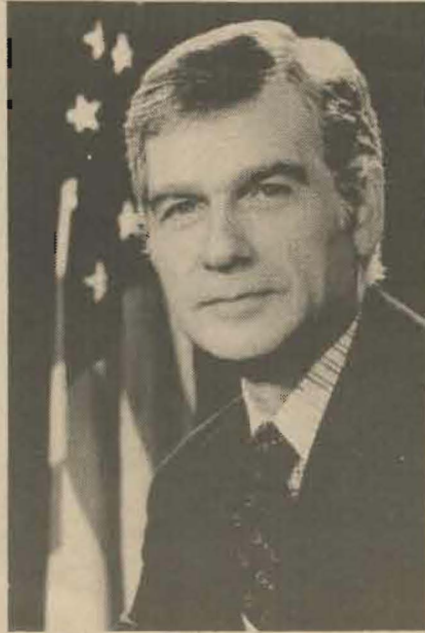
As a result of the Schumacher bequest, the PLU "Sharing in Strength" capital fund campaign is approaching the \$4 million mark, Rieke indicated. The five-year drive, now in its 18th month, is committed to raising \$16.5 million for new science and fine arts facilities and a strengthened scholarship and endowment fund.



Phyllis Schafly



Dr. Paul Erlich



Sen. Mark Hatfield



Karen DeCrow

## PLU Lecture Series Offers Issue-Oriented 1980-81 Programs

Senator Mark Hatfield of Oregon, environmentalist Dr. Paul Erlich, and an Equal Rights Amendment debate with Phyllis Schafly and Karen DeCrow are being presented this year by the Pacific Lutheran University Lecture Series.

### Scene Magazine, PLU Photographer Receive Awards

A candid photograph of theologian Roland Bainton, published in *Scene* last spring, won an honor award for chief PLU photographer Ken Dunmire recently.

It was one of two Dunmire photos selected in national print competition at the 19th annual technical symposium of the University Photographer's Association. The second photo was taken at the former Charles Ingram estate in Tacoma, bequeathed last year to PLU and sold recently to Tacoma music entrepreneur Gary Gonter.

*Scene* magazine was awarded honorable mention in the 1980 Schools and Colleges Publications Contest sponsored by the National School Public Relations Association. The magazine was previously cited by NSPRA in 1975 and 1977.

The university periodical has also been ranked for the past four years among the country's outstanding tabloid publications by the Council for Advancement and Support of Education (CASE). Each year several hundred copies are used by CASE as resource materials for a tabloid design workshop conducted by Charles Helmken, CASE publications expert.

Dunmire's photos will appear in a traveling exhibition which will be displayed at colleges and universities across the country during the next two years.

Hatfield, a leading Christian layman and highly-ranked member of the U.S. Senate, will discuss "Christianity and Politics: Church-State Relationships." The lecture will be held Wednesday, Oct. 22.

Erlich, who will speak at PLU Jan. 15, has long been an advocate of population control. A leading biologist, he is one of the first scientists to speak out on the environment-population crisis. He authored the best-selling book,

"The Population Bomb."

Schafly, considered a national spokesperson for the ERA opposition, will share the dias Feb. 12 with DeCrow, an ERA advocate and former president of the National Organization for Women.

While single event adult tickets are \$3.00, the PLU Lecture Series this year is offering all three programs for a season rate of \$5.00. Student and senior citizen tickets are half-price.

## 148 Honored At Summer Commencement

More than 140 bachelor's and master's degrees were awarded at Pacific Lutheran University summer commencement exercises Friday, August 22. PLU President Dr. William O. Rieke conferred the degrees.

Ron Pruitt of Centralia, Wash., spoke on behalf of the master's degree candidates. Prui earned a bachelor's degree from Biola College in La Mirada, Calif. in 1967. Following two years of seminary training at Talbot Seminary in La Mirada he served in a ministerial capacity. At summer commencement he received a master's degree in social science (marriage and family therapy). He intends to establish a marriage and family life center for marital counseling/enrichment in the Centralia area.

Speaking on behalf of the bachelor's degree candidates was Marjorie West of Portland, Ore. She received a bachelor of business administration degree.

Sixty-nine master's degrees and 79 bachelor's degrees were awarded. Master's degrees include 37 in social sciences, 27 in education, three in music, and one each in humanities and natural science.

There were 37 recipients of bachelor of science degrees in nursing, 19 bachelor of arts degrees, 10 in business administration, five bachelor of science, four in education, three bachelor of fine arts, and one bachelor of science/med. tech.



Award-winning Dunmire photo

PLU Executive Development Program Offers

## Ideas That Apply in the 'Real World'

By Judy Davis

The setting may be a "love boat," a luxurious hotel, a Pacific Lutheran University classroom or a company conference room, but the goal remains the same: to present seminars which help participants improve their performance on-the-job.

At PLU, the Center for Executive Development in the School of Business Administration bustles year-round pursuing that goal.

Each month, the center presents an average of 12 public and in-house conferences and seminars throughout the Northwest and Alaska. Generally, lasting two and three days, the seminar topics range from

time, stress, personnel and fiscal management to "How to Buy and Use the Right Business Minicomputer."

At the helm of the center is energetic Bill Crooks, a veteran of 31 years with the U.S. Marine Corps. Prior to joining the PLU staff, Crooks was director of communications for the Aerojet Surface Effects Ships Division in Tacoma. During the PLU Interim in January, he teaches management.

"Last year, we had the best program ever in terms of number of participants, and we began achieving our goal of presenting more specialized, in-company programs," said Crooks.

In 1979, for instance, the center tailored 17 programs for the Weyerhaeuser Corpora-

tion; recently, it concluded an agreement to evaluate management practices and conduct three-day training sessions for the Oberto Sausage Company in Seattle.

"We see the seminars as a way to foster the 'cross pollination' of ideas and to help participants from 'getting into a rut', said Crooks, whose office staff has grown to five full-time staff persons and several student helpers. The once-relocated office is again becoming "cramped quarters."

Crooks said, "PLU conducts the largest, all-inclusive and what we believe is the best series of public and in-company presentations in the Pacific Northwest. The in-company seminars are offered at approximately half the cost normally charged for similar programs."

Classes usually have a maximum of 30 participants. Faculty are drawn from graduate schools of business, consulting firms nationwide, PLU and other leading colleges and universities on the Pacific Coast and from industry.

"When a seminar is completed, we ask participants to rate them: generally, our ratings are between eight and ten on a scale from one to ten," Crooks indicated.

The center has presented conferences and seminars for such companies as Alaska Airlines, Allied Chemicals, the Boeing Company, Gulf Oil, North Pacific Bank, the State of Washington, the United States Air Force, the U.S. Navy and Todd Shipyard.

"We serve a growing number of local, regional, national and multi-national companies," Crooks said.

Complementing the regular executive development program series of seminars is the Institute for Business Development, co-sponsored by the PLU School of Business and North Pacific Bank.

Whereas the executive development program, as a general rule, appeals to managers and supervisors of larger firms and deals in specialized technical material, the institute is geared toward the needs of helping small-business entrepreneurs run business more efficiently and productively.

Spearheading the institute programs are Dr. Gundar King, dean of the school of Business Administration, and Peter Wallerich, president and chief executive officer for North Pacific Bank.

Besides giving participants new skills to use in improving their job performance, the seminars and conferences offered by the center provide high visibility for PLU.

"We find the programs also build alumni relations since a large number of PLU alums are among those who attend the programs — we also have a growing number of those attending who have participated in previous conferences," Crooks noted.

Although the center has experienced rapid growth in its five years of existence, Crooks pointed out the programs it offers are "at the mercy of the economy."

"During the last quarter, we experienced a downturn in attendance because of the general condition of the economy; as a result we have become more aggressive in seeking new clientele," Crooks explained.

Crooks believes the Center for Executive Development has received such good acceptance because it is providing a much-needed community service.

He said, "I think our seminars are usually effective in communicating difficult concepts in ways that make them both interesting and easy to understand — ideas that work in the "real world."



One of nearly 150 annual PLU Executive Development Seminars

### One Executive Development Seminar Offers Time-Saving, Productivity Tips

Connie Firm says "body language," "contracts" and "codes" can help busy people escape the snares of "the time trap."

President of her own management consultant firm in Chicago, Ms. Firm presented her time-management ideas during a recent seminar on "How to Improve Your Productivity" conducted by the PLU Center for Executive Development.

Among Ms. Firm's time-saving suggestions are the following:

- Try to meet office interlopers or "squatters" in the hall.
- Have a clock in a prominent place in your office so you can watch productive time frittering away.
- Stay standing; don't sit down when an office "squatter" enters.
- Develop your own personal body language to tell people, "This is not the time to discuss that matter."
- Re-contract a relationship with an interruptive co-worker.

"That may mean saying to a colleague something like, 'Can we meet for lunch on Thursday to talk about that, and then asking for their opinions,'" suggested Ms. Firm, formerly president of a computer services organization.

"Remember," said Ms. Firm, "we want to be ruthless with time but gracious with people."

Other time-saving ideas offered by Ms. Firm include:

- When compiling "to do" lists, use an alphabetical letter to indicate the importance of specific tasks; "A" would refer to the most important, "B" to tasks of lesser importance, etc.
- Keep a time log for 24 hours to see how your time is being used.

"One executive almost cried after he discovered that during a 24-hour period, he spent only 2.5 hours doing what he was 'supposed to do,'" revealed Ms. Firm.

She pointed out most people waste at least two hours a day "doing things that don't need to be done, doing things other people can do or just 'goofing off'."

Ms. Firm believes time management is going to be increasingly important because "the 80's are going to require all the energy, creativity and productivity we can muster to meet challenges we've never had before."

**(Another "How to Improve Your Productivity" seminar will be conducted by Ms. Firm Dec. 1 and 2 at the Red Lion Inn near Seattle-Tacoma Airport.)**



Toshiko Akiyoshi, Lew Tabackin



Elliot Fisk



Marni Nixon

## 1980-81 PLU Artist Series Offers Wide Cultural Variety

One of the most interesting and varied slates of attractions in several years will be presented by the Pacific Lutheran University Series during 1980-81.

The five-program series leads off Oct. 3 with Seattle lyric soprano **Marni Nixon**. Ms. Nixon has been recognized nationally since she was the singing voice for Deborah Kerr, Natalie Wood and Audrey Hepburn in several hit movie musicals of the '50s and '60s. She continues to present concerts across the country.

Jazz orchestras are beginning to emerge from the big band nostalgia era, and one of the most highly acclaimed of the newer ensembles is the **Toshiko Akiyoshi/Lew Tabackin Big Band**. Combining the best of the swing era, the Orient and today's progressive sounds, the orchestra will perform at PLU Nov. 1.

Classical guitarist **Elliot Fisk**, a Carnegie Hall, Wolf Trap and Kaufman Hall concert veteran, will appear at PLU Feb. 11. He has also been hailed internationally.

The **Oregon Mime Theatre** is scheduled for April 5. Rated by the

**New York Times** as "superb mime," the trio is directed by Paris and New York mime veteran Francisco Reynder.

The **Seattle Symphony**, presented in cooperation with Tacoma Philharmonic, concludes the season April 29.

"There is more variety and strength in this year's series than we've been able to provide for several years," Marvin Swenson, the program coordinator, observed.

Season or single performance tickets may be ordered by contacting the PLU University Center, 383-7457.



Oregon Mime Theatre

Seattle Symphony





High School research assistants Rom Lang, left, and Mike Roberson

## Chemistry Project Involves High School Students In Research

Three Washington High School students received college research experience this summer as the result of a special project conducted by the Pacific Lutheran University chemistry department.

Participating in the program funded by the American Chemical Society's Project Seed were Mike Roberson, Tom Lang and Chon Van Lai.

The 10-week project involved a total of more than 1,000 laboratory hours under the supervision of chemistry professors Sheri Tonn and Fred Tobiason. Roberson and Lang were studying the properties of a fungus, *penicillium roqueforti*, and its production of secreted enzymes.

Chon prepared and revised computer programs which were used to analyze Tobiason's research data.

According to Lang, who intends to major in engineering when he begins college next year, the experience gave them a valuable "head start" toward a college academic career by familiarizing

them with procedures and the kind of work that would be expected of them.

## PLU Drama Season Features Varied Fare

Plays by Shakespeare and Albee and a tribute to humorist James Thurber are among the highlights of the 1980-81 drama season at PLU.

The season also marks the 25th anniversary of Children's theatre on campus, created and still directed by Eric Nordholm.

The season opens Oct. 16 with "Dark of the Moon," a musical play by Howard Richardson and William Berney. Bill Parker directs, with musical direction by David Robbins and choreography by Maureen McGill. All are PLU faculty members. Other performances are Oct. 17-18 and 24-25.

"Harvey" by Mary Chase, a comedy directed by a new member of the PLU drama faculty, Lise Olson, plays Nov. 20-22 at 8 p.m. A Nov. 23 2 p.m. matinee is scheduled.

The Alpha Psi Omega production directed by Deborah DeGross is a revue based on some of the best material created by Thurber. It plays Jan. 29-31 and Feb. 5-6 at 8 p.m., with a 2 p.m. Feb. 7 matinee.

Shakespeare's classic "A Midsummer Night's Dream" will be staged March 26-28 and April 2-4.

Albee's "A Delicate Balance," directed by Ms. Olson, closes out the season May 7-10.

Two Children's Theatre productions include "The Lion, The Witch and the Wardrobe" Dec. 13 at 2 p.m., and "King Midas and the Golden Touch." Nordholm directs the latter Feb. 21 and 28 at 2 p.m. School performances are also scheduled.

## Orchestra Season Marked By Performances Of Major Works

Concerts on campus Oct. 7 and at Snohomish High School Oct. 12 open the 1980-81 Pacific Lutheran University Symphony Orchestra season.

Featured soloist for both concerts is harpist Matter Forman Dean, who joins the orchestra in a performance of Debussy's "Dances" for harp and string orchestra.

The season also includes concerts Nov. 11, featuring pianist Willa Doppmann; March 17, featuring members of the Northwest Wind Quintet; and May 12. The season finale spotlights the Choir of the West and University Chorale in a performance of Verdi's magnificent "Messa da requiem."

Members of the orchestra also participate in the Christmas Festival Concerts in December and the Student Soloist Concert April 7.

The opening program, which marks the beginning of Jerry Kracht's 13th season at the podium, also includes Handel's "Concerto Grosso in G Minor," Strauss' "Suite from *Der Rosenkavalier*" and Schubert's "Overture to *Alfonso and Estrella*."

All of the season's campus concerts are held in Eastvold Auditorium at 8 p.m. The Snohomish High School Auditorium is the site of the Oct. 12 performance, also at 8 p.m.

Ms. Dean, a harp instructor at

PLU, is making her first solo appearance with the University Symphony. She has performed with both the PLU and Tacoma Symphonies, as well as the Seattle Opera and Seattle Symphony Orchestras.

In November Ms. Doppmann joins the orchestra to perform Prokofiev's "Piano Concerto No. 3 in C major." A widely known northwest pianist, she currently serves as director of the Second City Chamber Series.

The Northwest Wind Quintet, a PLU resident faculty ensemble, has been seen on area public television this past season in a program entitled "The Wind and the Sea." During the March 17 concert, four of the Quintet members — oboist Bernard Shapiro, clarinetist Jerry Kracht, bassoonist Bruce Grainger and hornist Kathleen Vaught Farner will be soloists during a performance of the Mozart *Sinfonia concertante* in E-flat major.

The concert will also include the orchestra's contribution to the 100th birthday anniversary of composer Bela Bartok. Several other programs featuring Bartok music will be presented on campus during March.

Verdi's "Requiem," featured May 12, is considered one of the great works of musical literature by the acknowledged master of Italian opera.

### Why not give a gift of music?

#### PLU Choir of the West record albums

##### MOZART MASS IN C MINOR K427 (no. 9)

recorded in concert

\$8.50 (mail) \$9.75 (gift)

##### 1977 European Concert Tour (no. 8)

Lord, Thou Hast Been Our Refuge .....	R. Vaughan Williams
Sixty-Seventh Psalm .....	Charles Ives
O Tod, Wie Bitter Bist Du	
Mot tt op. 110 no. 3 .....	Max Reger
A Riveder le Stelle .....	Ingvar Lidholm
Set Down Servant .....	arr. Robert Shaw
Beautiful Savior .....	arr. F.M. Christiansen

##### Three Choral Works by Miklos Rozsa (no. 7)

To Everything There is a Season, Op. 20  
The Vanities of Life, Op. 30  
23rd Psalm, Op. 34

\$8.00 (mail) \$9.25 (gift)

Also available: Choir of the West records No. 3 through 6  
\$6.00 (mail) \$7.25 (gift)

To order, please send your check to:  
CHOIR OF THE WEST RECORDS  
Pacific Lutheran University  
Tacoma, WA 98447

(Indicate quantity)

No. 3 \_\_\_\_\_ No. 6 \_\_\_\_\_  
No. 4 \_\_\_\_\_ Rozsa \_\_\_\_\_  
No. 5 \_\_\_\_\_ Tour \_\_\_\_\_  
Mozart \_\_\_\_\_

Mail records to:

Name \_\_\_\_\_  
Address \_\_\_\_\_

From:

Name \_\_\_\_\_  
Address \_\_\_\_\_



Students benefiting from last year's Yule Boutique by receiving scholarships for the 1980-81 school year include: front, Charles Walsworth of Olympia; Cindy Kloth of Newhall, Calif.; Jeff Boreker of Puyallup; Helen Wallace of Tacoma; Susan Pederson of Eastsound; and Kevin Rohr of Tacoma. Seated second row, Kathy Johnson of Williston, N.D.; and Theresa Speakes of Puyallup. Back row, Ken Reidy of Lynnwood; Stephanie Bures of Portland; Kris Geldaker of West Linn, Ore.; Lisa Catterall of Ocean Shores; Mark Dahlstrom of Rapid City, S.D.; Joe Frazier of Puyallup; Eric Romerdahl of Everett; and Wendy Dawson of Tacoma. Not pictured, Debra Hunt, Robert Michaels, Steven Dong, and Laurie Wright Miller.

1980 Event is Nov. 22

## 1979 Yule Boutique Generates Funds For 20 Student Scholarships

As a result of its annual Yule Boutique and fund-raising endeavors, the Pacific Lutheran University Women's Club (formerly Faculty Wives) was able to increase to 20 the number of scholarships they awarded this year.

The recipients of the awards were chosen by the Office of Financial Aid on the basis of individual need.

A major money maker for this scholarship fund, the 1980 Yule Boutique will be held in Olson Auditorium on Saturday, Nov. 22 from 10 a.m. to 5 p.m.

The women of PLU annually invite over 60 non-profit organizations, all of whom sell a variety of hand-made items and holiday food, to participate in the Boutique. Proceeds from these donations go to charity organizations. In addition to these items, regional artists and craftsmen exhibit and sell their artwork, which include painting, pottery and sculptures.

Baked goods will be on sale in the Women's Club's bake shop and "cafe." Demonstrations on lefse and aebleskiver making also will be given.

## 1980 Christmas Festival Concert Features Respighi, Williams Works

Respighi's "Laud to the Nativity," composed in 1930, is a setting of a poem in old Italian ascribed to

a Franciscan monk, Jocapone da Todi.

It recalls the "dialogue-laude" of the 16th century, which led directly into the early (and opera-like) oratorio.

The "cast" is composed of the Angel, the Virgin Mary and the Shepherd. Recent alums and many PLU friends will recall that when the Respighi was last featured at PLU six years ago, those solo parts were performed by Juli Holland '75, Dinah Lindberg '76 and Jon Lackey '76.

The 1980 Christmas Festival Concert once again will feature the memorable Respighi work, along with the also memorable "Fantasia on Christmas Carols" by R. Vaughan Williams, which was presented during the 1976 Christmas Festival Concert. The work, based on carols and fragments of well-known Christmas melodies, features a baritone soloist, organ and string orchestra.

Williams' fascination with the Christmas story also produced, many years later, the radiant cantata, "Hodie."

The concert, under the direction of Dr. Maurice Skones and Edward Harmic, features the Choir of the West, University Chorale and Chamber Orchestra.

The ensembles perform for the seventh consecutive year in the Seattle Opera House at 8 p.m. Sunday, Dec. 7. On Saturday, Dec. 6, the program is presented in the Portland Civic Auditorium for the sixth consecutive year.

Campus performances at 8 p.m. in Eastvold Auditorium are Dec. 4, 12, and 13. A 4 p.m. matinee is scheduled for Dec. 14.

**Pacific Lutheran University**  
Department of Music - School of the Arts

present the annual  
**Christmas Festival Concert**  
featuring the Choir of the West & University Chorale

performing

*Respighi - "Laud to the Nativity"*  
*R. Vaughan Williams - "Fantasia on Christmas Carols"*  
plus familiar anthems & carols

	NO. TICKETS		
	\$5	\$4	\$3
Dec. 4 — Eastvold Auditorium, PLU, 8 p.m.	—	—	—
Dec. 6 — Civic Auditorium, Portland, 8 p.m.	—	—	—
Dec. 7 — Opera House, Seattle, 8 p.m.	—	—	—
Dec. 12 — Eastvold Auditorium, PLU, 8 p.m.	—	—	—
Dec. 13 — Eastvold Auditorium, PLU, 8 p.m.	—	—	—
Dec. 14 — Eastvold Auditorium, PLU, 4 p.m.	—	—	—

(All seats reserved, half-price students, senior citizens, children)

Send self-addressed, stamped envelopes and check, money order, or VISA/Mastercharge number to

Christmas Concert  
Pacific Lutheran University  
Tacoma, Wash. 98447

Name \_\_\_\_\_

Address \_\_\_\_\_



## Theologians Urge Humility In Contract With Third World Peoples

Christian missionaries from the United States, "coming from the wealthiest, mightiest nation on earth," have difficulty in preaching "a humiliated Christ" to Third World peoples, according to the Rev. Dr. Kosuke Koyama.

"But it's not impossible," Dr. Koyama said, because as Third World people see missionaries "come and work in these countries, they will see genuinely some sparks of the presence of Christ."

Dr. Koyama, professor of ecumenics and world Christianity at Union Theological Seminary, New York, spoke this summer at a Lutheran Church in America global mission event at Pacific Lutheran University. The session drew more than 550 missionaries, pastors and church members.

The Rev. Roy Beret a, a pastor in Peru, said the missionary's role will be less on the forefront and more as a backup.

"You must have a skill to share," said Ray Austin, who teaches in Liberia. "Governments and the church now want you to be specialized in a task, do that task and teach it to others. And then you leave."

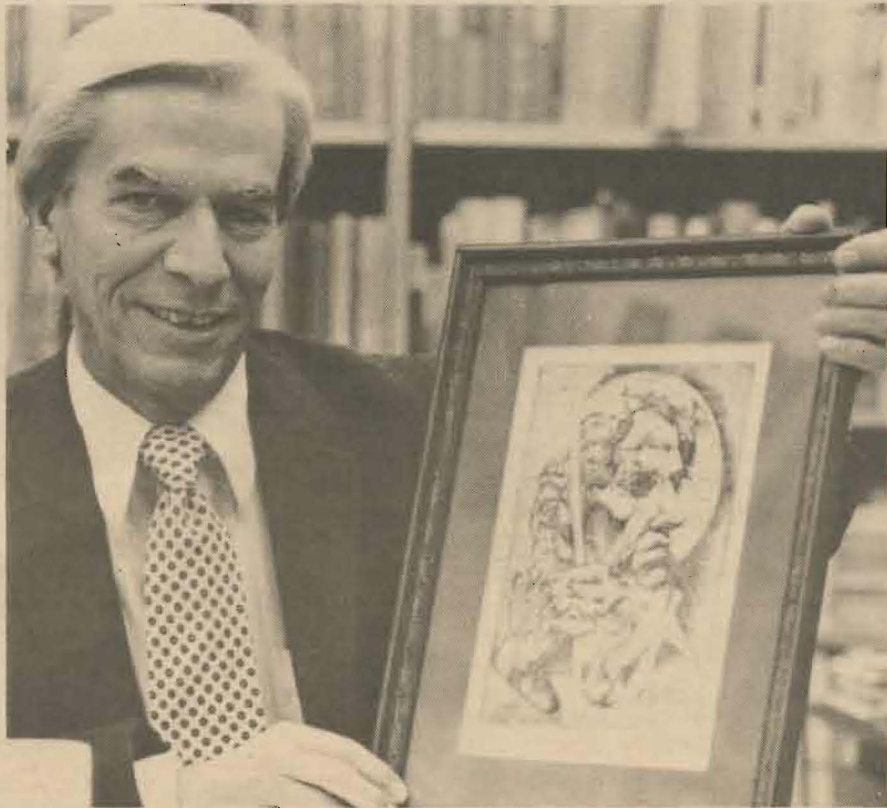
The Rev. Carl Johansson, executive secretary of United Mission in Nepal, noted that much mission work today is interdenominational,

often involving missionaries from many parts of the world, not just American Lutherans.

Dr. Koyama said he was disturbed to hear North Americans speak of overseas mission activity "as if the United States is the center and all else is the periphery — as if the most presence of the Holy Spirit is here."

He warned against Westerners' "fascination with increase" which makes people "feel bigger, more secure, more righteous." He said this leads people to believe science and technology are the savior of mankind.

"Technology is an extension of the hand," said Dr. Koyama. "The eye is perspective. As long as the eyes are questioning what the hands are doing, then you have healthy technology."



Dr. Richard Jungkuntz

## Pastors Join Campus Ministry Church Relations

Two pastors have joined the Pacific Lutheran University's staff as associates in the Campus Ministry and Church Relations offices.

Rev. Ron Pierre Vignec, a pastor with an unusually ecumenical background, is associate pastor in Campus Ministry. He previously served at Rock of Ages Lutheran Church in Stone Mountain, Ga.

Rev. John W. Adix is the new associate director of church relations at PLU. He served at Christ Lutheran Church in Lakewood for two years before spending the past year as continuing education director at the International Family Academy in Stavanger, Norway.

Vignec was born in Brooklyn, N.Y., the son of a Russian Orthodox mother and French Catholic father. His childhood was heavily Scandinavian, however,

and he was raised in Norwegian Lutheran churches.

He sees the role of a campus minister as helping students learn to live their faith. "Youth is often a time of religious confusion as the more complex questions of life are confronted," he said. "I'm not sure that confusion is bad. Christ leaves us with a lot of open-ended questions."

"The confusion can be transformed into exciting, living faith, not because persons are handed answers but because they learn to discern the answers for themselves," he added.

Adix will direct the PLU church representative program among the Northwest congregations of the American Lutheran Church. He will also serve as a liaison with both the ALC and Lutheran Church in America.

## Christ Seminary Honors Jungkuntz For Service

Christ Seminary — Seminex has presented a woodcut of St. John the Evangelist to Dr. Richard P. Jungkuntz, Pacific Lutheran University provost, in recognition of his six years of service on the school's board of directors.

Jungkuntz has served as a member of the school's board and its chairman for six years. He is not eligible for re-election following completion of a second three-year term.

The woodcut, by the world-renowned artist Siegfried Reinhardt, was presented to Jungkuntz as part of Christ Seminary's commencement exercises this spring.

The school's board of directors adopted a resolution commending Jungkuntz as "a man of faith, compassion, competence and wisdom who has served God with his gifts."

## H.S. Students Offered 'Project Advance' Course

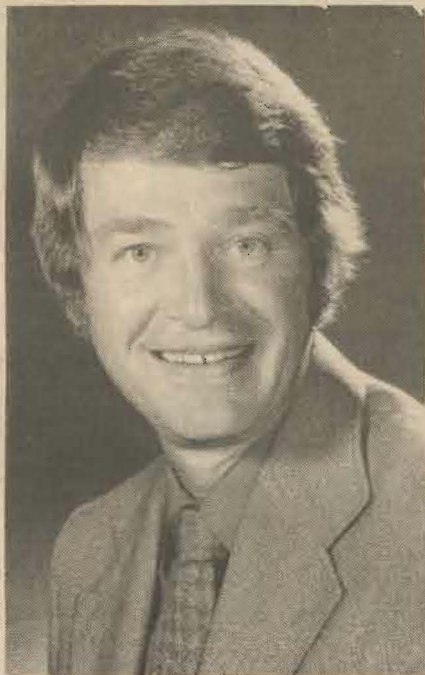
High school juniors and seniors have an opportunity to participate this fall in a one-credit Pacific Lutheran University course on the topic of consumer protection.

The latest in the PLU Project Advance course series begins Oct. 16. Classes will meet on six consecutive Thursday from 3:30-5:30 p.m.

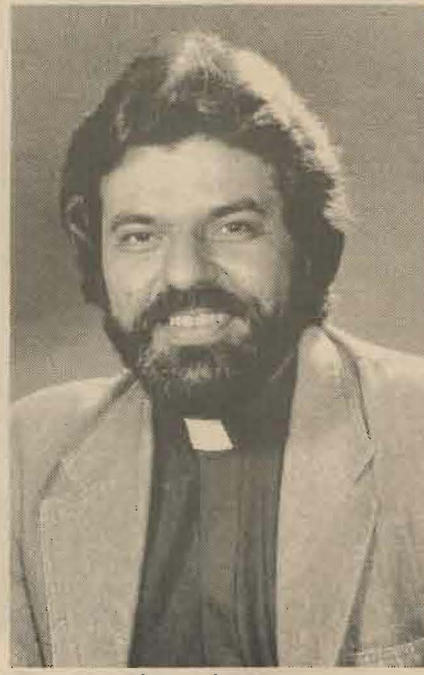
The program topic was selected to correspond with this year's National High School Debate topic: "Consumer Protection — Whose Responsibility?"

Project Advance is designed to complement high school studies and to provide a head start toward college credit.

For more information contact Dr. Judith Carr, PLU special programs coordinator, 383-7130.



Rev. John W. Adix



Rev. Ron Pierre Vignec

*William O. Rieke, M.D.*

## The 90th Anniversary Year: Building on Strength Toward a Promising Future

*(Excerpts from an address delivered by President Rieke at the Faculty Fall Conference on campus Sept. 4, 1980.)*

After an especially positive and productive summer, where both academic and convention activities surpassed our expectations, and budgets actually gained a little over projections, I take particular pleasure in reminding everyone that this fall we enter into the 90th Anniversary of the place which we call Pacific Lutheran. So, a Happy 90th Birthday to all of us!

Anniversaries, you know, are different things to different people. The theme that I share with you is built around the notion of Anniversary — the 90th year of Pacific Lutheran.

### The Mission

This anniversary gives us occasion to rememorize the mission, the essential **reason to be** of Pacific Lutheran.

The faculty action last spring, which involved some revision of Core I, affirmed the centrality of the Liberal Arts Core as it has long been defined at Pacific Lutheran University. In my opinion, the effect and the intent was not to downplay any discipline or any department. Neither do I accept that the intent was to make specific affirmation of the historic church-university ties, as important as those ties are. Rather, it seems to me that in the correct sense of the word "community," the faculty simply decided that the Core as previously defined truly was essential to mission. I say in the correct sense of the word "community," for I believe the quality and the manner of the nearly three hours of debate last spring which preceded the decision to accept revision of Core I demonstrated powerfully and poignantly the correct, and unfortunately in today's society the almost unique, understanding of community that exists at Pacific Lutheran.

That understanding of community merits both explanation and explication, for questions about mission have risen, and statements of apparent ambiguity about direction have been heard. "Community" does not mean conformity, any more than "family" means that all members therein look alike, have identical tastes, think the same thoughts, or act in a common manner. Rather, "community" means a sense of concern for one's fellows as people, an understanding that what is at stake is an individual's sense of caring and compassion, a genuine feeling of belonging, of being needed, of allegiance to cause, and the conviction that all humans simply but clearly need one another.

Importantly, community, when thus understood, and when allowed to operate in a free environment such as we cherish at Pacific Lutheran, not only then permits, but actually spawns pluralism. Only when the sense of community is strong can pluralism develop, for pluralism is productive: both of things we like and those things we dislike. A strong community accepts and examines pluralism without being threatened; it accepts and studies, and uses things of which some will approve and some will disapprove,

but none need be threatened if community is present.

In the free community of Pacific Lutheran there is room for pluralism; there is a home for minority views; there is need for the innovative, even the "strange" ideas. Here individual initiative, participation in various forms and ways, and vitality from every individual in his or her own style are affirmed. All of these forms of diversity, rather than being contrary to mission, are intensely supportive of it and enriching to it so long as they are consistent with academic rigor and spiritual value.

As long as there exists in a free community individuals caring for and sensitive to one another, pluralism and diversity will only help us deliver a quality education in a Christian context. These traits indeed will further that Mission Statement which, as you recall, calls for the development of knowledgeable persons equipped with an understanding of the human condition, a critical awareness of humane and spiritual values, and a capacity for clear and effective expression. In this, our 90th Anniversary Year, we lift up this understanding of community, and then press ahead with mission to which each discipline and every individual can and must contribute.

### Assessment

In addition to being a time of recollection of mission, anniversaries are also a time for assessment — assessment of the state of the institution. How well is Pacific Lutheran?

We are grateful that Pacific Lutheran finished academic 1979-80 in a favorable financial position, again solidly in the black, and without need for the "creative management" of which oldtimers have heard me speak before, but with a definite, though slim, margin four times bigger than the even slimmer margin of a year ago. The auditors left our University with smiles on their faces.

So too may we celebrate that summer 1980 events generated modest but helpful

fiscal cushions against unforeseen exigencies in the year ahead.

During the sixth year of this President's tenure, and counting the current '80/'81 year, it is possible to report that total budgets of this University have grown much faster than inflation. In fact, in those six years we not only have broken the \$20 million annual budget mark, but have increased 101.4 percent. Such increases reflect concomitant growth in program, in development, and in service. Fund raising efforts, too, continued to progress. A total of \$1,965,700 was received in cash, exclusive of pledges or gifts in kind from all sources last year. This is up 69.1 percent from the previous year. Many members of the campus community deserve credit for that; credit needs to be shared also with all administrators involved.

I thank specifically those who annually have supported the University through Q Club, through Lute Club, and through other means of giving of their money as well as their talent.

While we rejoice in this good news, I hasten to add that any interpretation which suggests that the University is now sitting in largesse would be a serious error. Margins remain slim and will call for constant fiscal restraint and tight management; but better that than the reversal and the downward trend of some institutions.

Academically, '79-'80 was a strong year also, with a number of new, vibrant programs coming on line. Annual reports from departments, divisions, and schools reveal that nearly all disciplines were heavily engaged in curricular development. Many were also working with faculty development.

Although some disciplines lost ground in terms of credit hour production, overall during '79-'80 total credit hours increased to 90,215, up 1.2 percent over the previous year's gain of two percent.

The mainstream — the heart of the University — remains its vital, strong academic program. A cautionary note here, too, though, is in order. The numbers of persons on the payroll at the University increased significantly during '79-'80. Full-time equivalent faculty increased from 183.7 in '78-'79 to 194.4 in '79-'80 — up 10.6 full-time equivalent faculty positions. Though I do not yet have comparable data for increases in staff and administration, such data are being gathered and very close watch must be maintained so that programmatic and productivity justifications are clear for all additions. With respect to faculty, more faculty are now present than have been present at

*(continued on page 11)*



Dr. William O. Rieke

any year during the incumbency of this President. Likewise, however, productivity is greater than it has ever been before.

#### Physical Plant

To the physical plant much has been added and planned. Adoption in the early portion of '79-'80 of the Architectural Master Plan was a major forward step for Pacific Lutheran. The new telephone system, the new computer, the construction of the Mathematics Building, the remodeling for a dance studio in Olson, the placement of a new small theatre in Memorial Gymnasium, the remodeling of a host of other buildings, including Eastvold Auditorium, Hauge Administration, Harstad Hall, the Nesvig Alumni Center, and elsewhere have provided classrooms and offices. Acquisition of the Knorr House has added 2,700 square feet of office space. And yet space remains a problem, as all know who leave their offices too long.

And, of course, the fact that the Regents approved a 77,000 sq. ft. new science facility to be constructed on the lower campus and the promise now of a site visit from the Murdock Foundation early this fall give hope that at least Phase I of that facility will not be too far away.

On Sept. 15 the architects' projection for a new building for the Arts was carried to our Regents for their review. It is an exciting new building for her unifying upper and lower campus, and bringing with it dimensions of excellence that I believe can and will be attained. Much, much must be done to fund these and many other improvements that we expect to make in the physical plant of the University.

We are challenged by the task of riding two horses at the same time: remodeling, upgrading and changing existing plant at the same time as we want to erect major new buildings. This strains our fiscal and our physical fiber greatly. It is not impossible, however, and the time, energy, and effort of all will bring us eventually to successful completion.

As we enter the 90th Anniversary year, we enter it again with a number of new firsts in terms of our students. It was a recent pleasure to sit at the Kinsmen Dinner with our football team — rated number one in the Nation this year in Division II of NAIA! All of us struggle to get radio or television or newspapers to come to PLU to talk about things that we think are important; when one has a number one football team, the media cannot be kept away. I am proud of that. We can all be proud of that, for the sense of community affirms that, just as we affirm many other areas of accomplishment.

In sum, the assessment of '79-'80 shows it to be, when all things are considered, the best year in the University's history.

#### The Future

Finally, what may anniversaries say for the future? A summary statement would be that the past five years have seen programs and systems of all kinds improved and consolidated to the point of being beyond certain

concerns. **Survival no longer remains the question. While maintenance certainly is necessary, we are as a University now at that point where we are ready for the next incremental step that will take us from an excellent to a superior institution.**

It is no coincidence that our student body grows stronger in number and quality each year. This year we greet 1,018 new students (681 freshmen, 316 transfers, and 21 readmitted students). They include a group of national merit scholars, which among Washington high school graduates chose Pacific Lutheran University with nearly four

#### Estate Planning

## Gift Annuity Rates Reflect Interest Rate Rise

By Edgar Larson  
Director of Planned Giving

Would you be interested in an agreement that will provide an immediate charitable contribution deduction, a guaranteed lifetime income, and an eventual gift to Pacific Lutheran University? If so, a charitable gift annuity may be the thing for you to consider.

Reflecting on the current economic situation in our country, with interest rates rising once again, the guaranteed return on charitable gift annuities is also going up. But there are many reasons for considering a gift annuity:

1. You receive a lifetime return — guaranteed — an annual income you cannot outlive.
2. You can provide for a surviving loved one.
3. You receive generous tax benefits.
4. You are free of management worries.
5. You can reduce or avoid capital gain taxes and estate taxes.
6. You support Pacific Lutheran University and its goals of academic excellence in a Christian context.

For more information, call or write:

Edgar Larson  
Director of Planned Giving  
Pacific Lutheran University  
Office of Development - Nesvig Alumni Center  
Tacoma, WA 98447  
(206) 383-7420

All replies will be kept confidential.

**Pacific Lutheran University admits students of any race, color, national and ethnic origin to all the rights, privileges, programs and activities generally accorded or made available to students at the school. It does not discriminate on the basis of race, color, national and ethnic origin in administration of its educational policies, admissions policies, scholarship and loan programs, and athletic and other school-administered programs.**

times greater frequency than they chose any other college or university, public or private, in our state. Interestingly, the applicant pool — those who desire to come to Pacific Lutheran University — is not down, but up; 101 more people asked for and received offers of admission to PLU this year than ever before (1,667 total offers a year ago versus 1,768 this fall).

As we look to the future, we will need the best kind of effort and the most intelligent "heads-up" sort of management — management that looks not just to '80-'81, but thinks of this institution beyond its 90th Anniversary to its Centennial, and even into the 21st Century.

And so the 90th Anniversary Year of Pacific Lutheran begins. I can speak only for myself, but I'm eager to do so when I say I know of no place I would rather be. I know of no institution I would rather serve. Most of the reason for this is because of all of you, because of your understanding of community, because of the opportunity for service, and because of the kind of people with whom we work and interact.

#### Parents Corner

## PLU Parents Club Extends Welcome To New Members

by MILTON NESVIG  
Parents Club Representative

Most of you who are parents of new PLU students this fall are receiving the *Scene* for the first time. Welcome into the PLU family and into the Parents Club. All parents of students automatically become members of the Club. There are no dues, no rules or regulations. We exist to support the program of the University in a variety of ways whenever and wherever we can.

One thing the Parents Club does is to work with the Alumni Association in sponsoring PLU events in various cities. Last summer one was held in Oslo, Norway with 51 persons in attendance, and a potluck dinner was held in Beaverton.

Dinners are slated for this winter as follows: Dec. 6, **Portland**; Dec. 7, **Seattle**; Jan. 10, **Spokane**; Jan. 11, **Walla Walla**; Jan. 18, **Phoenix**; Jan. 19, **San Diego**; Jan. 20, **Los Angeles**; Jan. 24, **East S. F. Bay area**; Jan. 25, **West Bay area**. These will be held in conjunction with PLU Choir of the West and University Chorale concerts. You will receive notices regarding time and place. There will be other dinners during the course of the school year.

## Kicking Post Long A Landmark On PLU Campus

By Harold Leraas

The Kicking Post was long a landmark and a tradition on the Pacific Lutheran campus. It was at times a romantic spot, and at other times a center for intercollegiate rivalry and strife.

A simple structure it was — a 6" x 6" post securely planted in the ground at the west end of the upper campus. It stood four feet tall on the brink of the hill where Kreidler Hall now is located. But the dormitories were not there then.

Literally hundreds of fellows took a young lady for a walk all the way from the Main Building to the Kicking Post and back. It was a daily occurrence. On sunny days they walked along the grassy path, across the football field, and on up through the fir trees to the Post. On the way the path was lined by lush grassy plots in which flowers bloomed. In the spring could be found lupine, paint brush, violets, shooting stars, bronze bells, camas, and hare bells. Then came the dusty sunflower, wild parsley, daisies, and goldenrod, and many more. On lucky days, students might even encounter a tethered cow or two belonging to some professor. In the 1930s they might also pass some old, half-fallen bleachers, reminders of the days when the Chautauqua was held on campus.

The Post was soon covered with the initials of the many couples who were able to carve in wood. It was traditional for the boy and the girl to kick the post before starting back. Sometimes they lingered quite a while at the post before kicking it. On balmy moonlight evenings, a walk to the Post is rumored to have been quite a romantic venture and a favorite occasion for proposals.

At the height of a lively athletic season, the Kicking Post was frequently in jeopardy. The cross-town rivalry grew serious and inter-campus pranks were not unheard of. Stealing of the Kicking Post by C.P.S. (UPS) was a real victory. It could be uprooted or sawed off, and both methods were employed. We almost always got it back, though sometimes the worse for wear.

The Kicking Post was for years a great landmark, and alumni often walked there to reminisce. It was forced to give way to progress under the big building program of the 1950s, but was not destroyed. Today it is securely housed somewhere in the warehouse on lower campus. One day, perhaps, it will take its place in the PLU archives or a museum of the future.

Q Club

## Q Club Aims For 9-Year \$2 Million Goal By Dec. 31

By David Berntsen  
Director of Development

Classes have begun and Pacific Lutheran University is beginning its 90th anniversary year. President Rieke, speaking at the opening Convocation, stated that the university is stronger now than at any point in its history.

I believe that those of you who are in the Q Club can feel proud of helping PLU reach this point. Your gifts were a key to the university having one of its best years financially, essential to financial aid packages, and helping to keep tuition down.

The Q Club passed a tremendous milestone this past spring when we reached over 1,000 members. With your help in the coming months we can reach a significant new milestone. Our goal is to surpass \$2 million in total Q Club contributions since 1972 by Dec. 31 of this year. We will need a 16 percent increase over last year's giving to reach that goal.

One of the ways we hope to increase contributions is through the creation of a new giving level in the Q Club at \$40 per month or \$480 per year. An article about the new level, to be called Associate Fellows, can be found elsewhere in this issue of *Scene*.

We will also be starting our phonathons again this fall beginning in October. These have proved very successful in the past year — especially when our callers were speaking to people they knew personally. If you would like to help as a caller in one of our monthly phonathons, just contact the Q Club office at 383-7429.

The following Q Club members have joined since the July issue of *Scene*: Mr. and Mrs. Trygve Anderson, Dr. and Mrs. David BeMiller, Mr. and Mrs. Trygve Blix, Mr. and Mrs. Mitch Billings, Alene Coglizer, Creator Lutheran Church at Lake Tapps, Mr. and Mrs. Doug Cross, Leland B. Dawson, Carolie Eggan, Mr. and Mrs. Michael Garver, and Mr. and Mrs. Ron Gintz to FELLOW.

Also Mr. and Mrs. Dennis Goin, Dr. and Mrs. Frank Hagen, Mr. and Mrs. Jerry Haralson, Mr. and Mrs. James Harris, Mr. and Mrs. Richard Jackson, Mr. and Mrs. Russell Johnson, Janet Karns, Mr. and Mrs. Mark Knutzen, Mr. and Mrs. Gordon Lee, Pamela Lee.

Terry Lumsden, John McCallum, Drew Nelson, Mr. and Mrs. Arden Olson, Mr. and Mrs. Don Poier, Smith Tractor and Equipment Co., Mr. and Mrs. John Valazquez and Dr. and Mrs. Calvin Watness.

## PLU Strives To Offer Students More Than 'An Education'

By Duane Berentson '51  
Washington State House of Representatives

I find it refreshing to take the time to reflect on my days as a student at Pacific Lutheran University and the association I've had over the years with the faculty and administration.

It is not often that an institution of higher education encourages students, through a blend of academic achievement and theological experience, to strive beyond what most people would consider a "college education." Pacific Lutheran embarks on that challenge and is very successful in accomplishing this goal.

The university experience instilled in me the strength and drive to look after my own needs and to also take responsibility for the needs and problems of others.

At PLU I learned more than what can be found in textbooks. I gained the educational and spiritual stability that, in my case, translated into a sense of community responsibility. This responsibility to our communities, state and nation is not inherited, nor can we say that responsibility is an automatic reaction to current situations. The desire to identify a problem, dissect it and then work toward its eventual resolution is a learned experience.

If taking care of your own life and striving to make this world a better place to live for our children and our children's children is a learning experience worth working toward, then I would not hesitate to recommend the University that helped instill those qualities in me.

## Annual Alumni Phonathon Set For Late October

Dr. Roy Virak '52, chairman of the Alumni Board Annual Fund Committee, has announced plans for the alumni annual fund phonathon to be held the last week of October.

Over 40 callers will be calling their classmates and other Pacific Lutheran alumni.

Virak says that nearly 2,000 calls will be completed on two nights of calling and is sure alums will be anxious to talk to former classmates and friends.

Those who cannot be reached during the two nights of calling will be sent information in the mail.

### Attention Q Club Members!!

*Due to a scheduling conflict, the President's Reception and Christmas Concert for Q Club members has been rescheduled for Saturday, Dec. 13.*

## Children's Theatre, Band Reunions Are Homecoming Highlights

By Ronald Coltom  
Alumni Director

Remember the kicking post, the kiosk, or trips to Kansas City? How about water skiing and Clover Creek and lower-campus flooding, endless registration lines and the friends you made while waiting, sleepless nights during finals, the Four Freshmen or perhaps PLU's first dance. A trip to the Bug, Len's, the "Slip," Mt. Rainier, or with the band, choir or debate tours. These and many, many more are all memories of PLA, PLC and PLU. Memories around which homecomings are built.

This year, November 8, is no exception with reunions planned for the five-year classes at brunches on the campus, and after the dinner at the Tacoma Mall, and two special reunions. Special tribute will be paid to retiring Gordon Gilbertson, many years band director at PLC & PLU. Members from all past BANDS will gather at 9 a.m. in Chris Knutzen Hall to rehash the "good ole times" and those who still have a "lip" will gather for a little jam session.

Members of past CHILDREN'S THEATRE will congregate at the same time in Eastvold Auditorium to celebrate the 25th year of the Children's Theatre all under the direction of Eric Nordholm. Nordy's gang won't be rehearsing, but will be doing a lot of reminiscing with cast members of the past quarter century.

At 8:30 a.m. the second annual running of the LUTERUN 5000 will be held. This 5000 meter (3.1 mile) fun run is open to all alumni, and their dependents — kids division, PLU students, faculty and staff, will cover a scenic campus route. No entry fee — just register between 8-8:25 a.m. at the entry to Olson Auditorium.

Open house in the dorms, tours of the campus and a brunch for all alums and spouses (coffee shop will be open for the kids) will provide plenty of time for reminiscing that morning.

Afternoon activities include our nationally-ranked football team's encounter with Lewis and Clark, with campus tours for those who don't care to attend, followed by a get-together for alums of the past five years at the Raintree.

That evening's Homecoming Banquet will honor former band and Children's Theatre members, the classes of 1975, 1970, 1965, 1960, 1955, 1950, 1940, 1930, and those prior to 1930. Special awards will be presented to Distinguished Alumnus, Alum of the Year and special recognition recipients.

With all of these events there appears to be something for everyone. So why not plan to join us for Homecoming '80 and relive and revive some of the old memories. We'll tie a yellow ribbon!

Tickets and further information for events of the day are available in the Alumni office.

## Making Ideas Known Key To Strong Alumni Association

By Carol Geldaker, President  
Alumni Association

As the dust settled and it slowly sank into me that I was to be the president of the PLU Alumni Association for the 1980-81 academic year, I had tremendous feelings of inadequacy. How could I do it? I'm not a doctor, not a successful business person, nor an administrator, or anything else with "clout." How did this happen? My first reaction was — NO Lord, not me. I've got to get out of this. Then I thought of how God spoke to Moses when he panicked.

I'm certainly not a Moses, but I decided to dig in and do it. Besides I also found myself thinking of Rhoda Young, who was head of the women's physical education department when I was doing my undergraduate work at PLU. She had a lot of confidence in most all of her P.E. majors. She also let us know if we weren't meeting her expectations. Since she and I still remain in touch, and good friends, I don't want a lecture. Yes, Rhoda, I'll do it. (I'm wondering if this isn't a first — a woman physical education major as Alumni president. It could only happen at PLU!!)

I'm awed by the number (15,658) of alumni we on the board are trying to represent. I'm excited over what I feel has been happening at PLU during the four years that I've served on the board, and I feel a real responsibility to learn as much about the University as possible, because I know that I am a contact person in my area for PLU. Each alumnus is that "contact" person even though you may

not be actively involved with PLU at this time.

One of the two main reasons that the Alumni organization exists is to help encourage students to attend PLU. It is exciting to find so many alumni dependents coming. It has been an opportunity for me to re-establish some friendships from college days, since our oldest son and daughter are now attending PLU. What young people do you know whom you might speak to regarding PLU as a place to consider for furthering their education?

The other Alumni thrust is to help bring in monies that will continue to provide for scholarships for students. Yes, a private college costs more to attend, but there are many ways financial aid can be available. We as an Alumni Association can be a very active part in aiding the University in this endeavor, plus its continued striving to improve its facilities and instruction as a place for Christian higher education.

Just as there are numerous ways you can assist the University, there are many directions an Alumni Association can serve its members. I urge anyone interested in seeing particular programs, tours, ways the alumni organization can better function, to please contact the Nesvig Alumni Center (206/383-7415) or drop us a line, sharing your ideas, thoughts and/or your concerns. The association will only be as strong as each of us makes it.

Please speak up. We will never know your ideas if you don't make them known.

Silence says consent. Is that what you mean to say?

### 1980-81 Alumni Board

#### Officers

Carol Bottemiller Geldaker '57  
President  
West Linn, Ore.

Rev. Charles W. Mays '62  
First Vice President  
Renton, Wash.

Paul Kusche '70  
Second Vice President  
Gig Harbor, Wash.

Ronald A. Miller, M.D. '65  
Immediate Past President  
Whitefish, Mont.

Ronald Coltom '61  
Executive Secretary  
P.L.U.

#### Regent Representatives

Michael A. McKean '68  
Gig Harbor, Wash.

Roy H. Virak, M.D. '52  
Tacoma, Wash.

Victor F. Knutzen '36  
Federal Way, Wash.

#### Members-At-Large One-Year Appointments

Connie Haan Hildahl '65  
Tiburon, Calif.

Denny B. Nelson '60  
Corona, Calif.

Lynn (Burchfield) Rasmussen x'68  
Portland, Ore.

Willamae (Anderson) Stuhlmeier x'59  
Edwall, Wash.

Harry Wicks '69  
Colorado Springs, Colo.

#### Terms Expire May 1981

Gayle Severson Berg '72  
Martinsdale, Mont.

Stephen M. Isaacson '76  
Boise, Idaho

Carol Haavik Tommervik '40  
Tacoma, Wash.

Martha Miller Ward '77  
Kent, Wash.

#### Terms Expire May 1982

Karin Pihl Leander '66  
Mt. Vernon, Wash.

Anita Hillesland Londgren '59  
Tacoma, Wash.

Rev. Charles W. Mays '62  
Tacoma, Wash.

Kent Kekrony '62  
San Carlos, Calif.

#### Terms Expire May 1983

Otis Grande '38  
Tacoma, Wash.

Karen Fynboe Howe '73  
Fox Island, Wash.

Paul Kusche '70  
Gig Harbor, Wash.

George Nowadnick '52  
Snohomish, Wash.

#### Terms Expire May 1984

Carole Haaland Fredrickson '64  
Seattle, Wash.

Connie Idstrom Hager '63  
Billings, Mont.

Robert Klavano '69  
Tacoma, Wash.

William Ramstad '47  
San Diego, Calif.

#### Ex-Officio Student Rep.

Bob Gomulkiewicz, President  
ASPLU



Dr. Eugene Strandness



Dr. Jon Wefald



Harry Wicks



Ron Lerch

## Strandness, Wefald, Svare To Receive PLU Distinguished Alumnus Awards

Seven persons will receive special honors during the annual Pacific Lutheran University Alumni Homecoming Banquet Saturday, Nov. 8.

The event, which will be held in Olson Auditorium at 5:30 p.m., will feature the announcement of three 1980 Distinguished Alumni: Dr. Eugene Strandness '50 for medicine; Dr. Jon Wefald '59 in education; and Richard Svare '50 in the arts.

### Heritage Award Selection Is Grace Blomquist

Grace Blomquist, who retired from the PLU English Department in 1976, has been selected to receive the Alumni Association's annual Heritage Award at the Homecoming Banquet Nov. 8.

Miss Blomquist served at PLU for 37 years, a time span exceeded only by former dean Dr. Philip Hauge.

Her years of teaching, which began in 1939 following her receipt of a master's degree from Syracuse University had, until her retirement, spanned the college careers of more than 90 percent of the university's alumni.

She previously was honored by her own alumni association at Concordia College, Moorehead, Minn., in 1971.

Since her retirement, Miss Blomquist has been serving on the social concerns committee at Trinity Lutheran Church. In that capacity she has been assisting recently-arrived Laotian and Vietnamese refugees.

Strandness, a professor of surgery at the University of Washington School of Medicine, is the editor or co-author of seven books and nearly 200 scientific articles, abstracts and book chapters on a variety of diseases and surgical methodology.

A former post-doctoral fellow at the National Heart Institute, he has been associated with the University of Washington School of Medicine for most of his career since his graduation from PLU. He was a UW medical student through 1954, served there as a resident in the late '50's, and became a member of the faculty in 1962.

He recently has served on the editorial boards of several medical publications.

Wefald became the fourth president of Southwest State University in Marshall, Minn., three years ago after six years as Minnesota's 22nd Commissioner of Agriculture. At the university he is also at home in the classroom, having taught for five years at Gustavus Adolphus College, St. Peter, Minn. He has also had teaching fellowships at the University of Michigan and Washington State University.

A dedicated spokesman for rural America, he believes Southwest State can expand its dual mission of the traditional liberal arts education and strong offerings in technology to include studies of greater depth involving the people and culture of rural Minnesota and rural America.

A third-generation Minnesotan of Norwegian ancestry, his heritage supports that commitment.

Richard Svare '50 of Athens, Greece, has been selected as PLU Distinguished Alumnus in the arts.

An education major who began his career as a drama teacher at Cleveland High School in Seattle, Svare currently is a writer and editor in the office of the Prime Minister of Greece.

He has also been actively involved in music festivals in Athens and on the island of Corfu off the Grecian coast.

He is the author of a book, **The Windows and Doors of Greece**, which is expected off the presses near Christmas.

Svare's artistic career has taken him around the world. It has included work with the Merce Cunningham Dance Company of New York; a documentary film produced in Leningrad, Russia; an English-speaking theatre which performed in England, Norway and Denmark; and editorship of the American language edition of a magazine in Japan. He has also written articles for the *New Yorker* magazine and has done interior decorating for Hilton Hotels.

Svare's father, Trygve, was pastor of Trinity Lutheran Church on the PLU campus in the '20's and '30's and taught religion and Latin for the college. Years later he served as United States ambassador to Norway.

## Wicks, Lerch Are PLU Alumni Of The Year

Harry Wicks '69 and Dr. Ronald Lerch '61 of Kennewick have been selected 1980 Alumni of the Year at Pacific Lutheran University.

Their awards will be presented at the annual PLU Alumni Homecoming Banquet Saturday, Nov. 8.

Wicks, the president of the Management Development Foundation in Colorado Springs, Colo., is an at-large member of the Alumni Association Board of Directors. He is also involved in church youth work and theological education for laity.

Lerch, a process development manager in nuclear research at Westinghouse Hanford, is a past president of the PLU Alumni Board.

Both are married to PLU alumnae. Mrs. Wicks is the former Mildred Plumb '69. Mrs. Lerch is the former Judy Rasmussen '62.

## Joanne Rieke To Receive Alumni Honor

"When Dr. Rieke was hired as president of Pacific Lutheran University, we actually got two people for the price of one."

The comment by a PLU administrator helps explain why Mrs. Joanne (Schief '54) Rieke will be receiving a special award at the Alumni Homecoming Banquet Nov. 8.

"She's a servant behind the scenes," the administrator said. "Not only does she help the president with his work and schedule, but she serves independently with a variety of different groups."

## Class Notes

### 1950

MARILYN PFLUEGER SCHUMUTTER served as official delegate for her alma mater at the inauguration of president William Nelsen of Augustana College, Sioux Falls, S.D. on September 27.

WALTER DINGFIELD has accepted a call as pastor of First Baptist Church in Lodi, Calif. They formerly lived in Kankakee, Ill.

### 1951

BOB ANDERSON of Sonora, Calif., special education director for the Tuolumne county schools office, has been named director of the Tri-County special education consortium. The program will put all special education programs in Tuolumne, Calaveras and Amador counties under single management.

### 1955

DONNA (Simkins) HOFFMAN, received her master of library science degree from San Jose State University on Aug. 22, 1980.

### 1957

AGNES M. GRIFFEN has been selected to become director of Montgomery County's Department of Public Libraries in Rockville, Md. She will be in charge of Montgomery's system of 19 branches, a staff of 220 full-time and 320 part-time people.

### 1958

LUTHER G. JERSTAD, who climbed Mt. Everest in 1963, has been named to the newly created Deschutes River Scenic Waterway Advisory Task Force in Oregon. Lute is president of Lute Jerstad Adventures, a commercial outfitter in Portland, Ore.

JON C. SOINE completed two weeks of active duty at the National Defense University in June. The defense Strategy Course, held annually since 1959, is a professional military educa-

tion program for senior Reserve and National Guard component officers. The program focuses on the study of national strategy, and the relationships between resource management and policy objectives. Jon holds the rank of Captain.

### 1959

WAYNE M. BERG is pastor in a parish in Estevan, Sask., Canada.

JACK HOLL is historian for the Energy Department of the U.S. Government. His job is to write books on energy and nuclear power. He also stores the files of defunct agencies and "provides the department with an institutional memory." Jack's office traces its roots back to 1957, when it was set up as part of the old Atomic Energy Commission. Its chief task, under the direction of Richard Hewlett, was to write the history of atomic power in the U.S.

RICHARD LONDGREN, manager of advertising and communications services for the Weyerhaeuser Company, was re-elected to a four-year term on the 12-member communications management committee of the Lutheran Church in America at its July convention in Seattle, Wash.

### 1960

DANIEL WITMER is administrative coordinator of the Allen Hancock Community College (Santa Maria, Calif.) branch at Vandenberg Air Force Base. He lives in Solvang, Calif.

### 1961

J. BYRON JENSEN is executive director of Community Service Council responsible for all human service planning in an eight-county region of central Indiana. He lives in Indianapolis.

TED JOHNSTONE served as co-chairman of an advisory committee which arranged a benefit showing of the movie, "Camelot," at the Temple Theater in Tacoma last spring. The benefit raised funds for the PUSH/EXCEL program, which has challenged over 3,000 Tacoma-area students to improve their school work.

### 1963

DAVE and NANCY (Thompson '64) CAMERON moved to Snohomish, Wash., last winter and are in the process of developing a small truck farm. Dave had an article published in the "Journal of Forest History." He still works for the Everett School District

and U.S. Forest Service. Nancy runs the farm, but manages to keep up her activities in music and at church.

The first 51 years of the *Kirchliche Zeitschrift*, the theological journal of the Iowa Synod and the old ALC, have been donated to the PLU library by ROBERT OLSEN, pastor in Almira, Wash. (continued on page 16)

## Oslo, Norway Gathering Attracts Alumni, Parents, Friends



The Hon. Sidney A. Rand, second from right, U.S. Ambassador to Norway, spoke at the PLU meeting in Oslo, Norway, June 29. He was president of St. Olaf College until last February. Also on the PLU program was Dr. Janet Rasmussen, second from left, member of the faculty who spent the summer in Oslo on a study grant. Others pictured are Dr. Frederick Hale, left, U.S. graduate student and author; and Mrs. Rand.



Jon Fodstad '61, an Oslo attorney, talks with Bente Mellum, who attended PLU in 1978-79, at the PLU gathering in Oslo.



The Rev. Victor Andersson of Oslo displays a wool hand-woven tapestry which he and his wife gave to PLU at the parents/alumni meeting in Oslo.



Rev. Ivar Haugen '54, third from right, pastor of Redeemer Lutheran Church in McLean, Va., gave the Opening Prayer of Congress in May. The occasion was marked by a presentation from Speaker of the House "Tip" O'Neill. Looking on are several congressional members of Redeemer Lutheran from left, Sen. William Armstrong (Colo.) and Reps. Robert Badham (Calif.), Douglas Bereuter (Neb.), Martin Sabo (Minn.) and Charles Stenholm (Tex.). Haugen and his wife Ginny (Grahm '56) have two children attending PLU, Karin and Andrea.



Arild Harvik '67, business executive in Drammen, Norway, left, met Andreas Udbye and his mother from Trondheim at the PLU meeting in Oslo. Andreas is a freshman at PLU this fall.

(continued from page 15)

Pastor Bob picked up the set at Wartburg Seminary in 1968. The books cover the years 1876 to 1928. (The library already had 1928 to 1943). The journals contain interesting commentary on the Lutheran Church in those years.



Jess Hagerman

In our June issue mention was made of Dick Latimer '63, a helicopter pilot who was involved in rescue activities near Mount St. Helens in May. Capt. JESS HAGERMAN of Puyallup, Wash., a helicopter pilot for the National Guard and Weyerhaeuser Company, also was a mainstay in post-eruption rescue efforts.

ROY HELMS has accepted a new position of executive director of the Consortium for Pacific Arts and Cultures, a regional organization of the state arts agencies of Alaska, American Samoa, California, Guam, Hawaii, and the Commonwealth of the Northern Mariana Islands. Roy has also been appointed to the U.S. Commission on UNESCO by the Secretary of State.

## 1964

M/M DAHLING (June Newharth x'64) are the parents of a daughter, born May 30, 1980. She has been named Julia Margareta and joins a sister Joanna Grace, 6.

BILL PETERSON and family (wife Mary and two sons, Seth, 6 yrs. and Paul, 4 yrs.) have left Oregon State University for Long Island, N.Y. Bill is assistant professor of marine sciences at Stony Brook, teaches Biological Oceanography and is running a research program in coastal zooplankton ecology.

## 1965

M/M BENNETT (Cynthia Weaver) are the parents of a son, Joel Peter, born June 14, 1980. He joins three brothers, Kenneth, 12; Daniel, 6; and Timothy, 4½. They live in Lynden, Wash.

## 1966

CHUCK BRUNNER, employed as manager, marketing education, International Paper Company in New York City and wife, Carol, are the parents of a son, Michio, born May 4, 1980. They live in Manhattan.

## 1967

DAVID BORGLUM worked at the Berkeley office of San Francisco Theological Seminary (Presbyterian), a part of Berkeley's Graduate Theological Union, this past summer and has accepted a call to become assistant minister at Hillside Community Church of El Cerrito this month.

SUE MERCER x'67 and Jack Boller were married June 16, 1979 (she kept her own name). She has been admitted to Kansas City College of Osteopathic Medicine. They reside in Des Moines, Ia.

M/M David MILLER (Kari Kruger) are the parents of a son, Ekren David, born May 10, 1980. He joins two sisters, Seri, 8, and Maarit Ann, 4. They live in Palo Alto, Calif.

Maj. MERLIN SIMPSON, MA '67, has been transferred from Vandenberg AFB to Oslo, Norway where he will be stationed for the next four years on a NATO assignment.

## 1968

KATHLEEN LAWRENCE is an English teacher in McLaughlin Jr. High, Vancouver, Wash. She was elected delegate to Madison Square Garden Democratic National Convention in New York City which was held in August.

## 1969

RANDY L. ABERNETHY recently accepted a call as pastor of the Lutheran Church of the Atonement, Clinton, Ia. He moved to Clinton from Mason City.

PHIL ISENSEE will be married to Martha Helen Maier on Oct. 4, 1980 in Portland, Ore., and then will make their home in Ames, Ia.

TERRY E. LUMSDEN is living in Tacoma, Wash., where he is associated with the law firm, Billett, Comfort & Rosenow. He was listed in "WHO'S WHO IN AMERICAN LAW" 1980 and nominated as "Outstanding Young Men in America" by the Jaycees in 1980.

## 1970

JAMES W. AAGESON has resigned as pastor of Our Savior's Lutheran Church in Great Falls, Mont., to pursue doctoral studies at Oxford University, Oxford, England. He will be doing research in the area of New Testament studies at Mansfield College beginning in Michaelmas Term, the 9th of October. He will be studying with Mr. Anthony E. Harvey, Bampton lecturer and chaplain of Queen's College at Oxford. He has served as associate pastor of Our Savior's Lutheran Church, Great Falls, for the past three years. His wife, the former JULIE TAYLOR '70, and their two daughters, Erin and Anne, will accompany him to England.

(continued on page 17)

## Over 100 Visit Holden

The week of August 25-30 over 100 alumni, families, and parents from PLU went to Holden Village on Lake Chelan for a week of fellowship, relaxation and fun. They came from all over the United States as far away as Liverpool, New York. Other states re-

presented were: Colorado, Montana, Idaho, California, Oregon and Washington.

The Alumni Board held their annual fall meeting the weekend prior to Holden Week and a number of board members and their families remained for the balance of the week.



From left, Carol (Bottemiller) Geldaker '57 greets Holden newcomers.



Beverly (Swanson) Mohr '59 and PLU alumni Regent Roy Virak '52.



Steve Isaacson '76, Gayle (Severson) Berg '72, Lynn (Burchfield) Rasmusson '68 and Connye (Idstrom) Hager '63 are members of the Alumni Board Programs and Services committee.



## Village For PLU Week

Two members of the PLU faculty, Dr. Philip Nordquist and Dr. Jens Knudsen, were part of the Holden faculty that week and presented some very interesting lectures and classes for everyone.

Another Alumni HOLDEN WEEK is being planned for 1981 on August 16-22.

"Holden Village is a stimulating place to be away from all the cares of business and home. If you have been there you already know this . . . if you haven't been there you might want to plan to attend with your family or friends in 1981," alumni director Ron Coltom said.



Kent Tekrony '62, alumni director Ronald Coltom '61 and Charles Mays '62 relive football days at Pacific Lutheran in the early '60's.



Marv Tommervik '42, right, shows Arne Strand '38, left, and Stener Kvinsland '38 how he carried the ball when he was a PLC All-American.



From left, Carol (Haavik) Tommervik '40, Margaret (Heggem) Kvinsland '40 and Virginia (Jahr) Strand '40.

(continued from page 16)

HARLEN D. MENK was married to Georgie Solvie of Hayward, Wisc., on June 7, 1980. He is currently pastor at Trinity and Long Lake Lutheran Churches in Birchwood and Sarna, Wisc. They live in Birchwood.

### 1971

GARY ECKHARDT has been transferred to Dayton, Ohio as traffic manager for the Eastern Distribution Region's Dayton wholesale warehouse complex. He previously lived and worked in Atlanta, Ga.

CARL S. ARSON, M.D., has completed a fellowship in medical oncology at the University of Illinois Hospitals and has moved to Beckley, W. Va., where he is a member of Southern West Virginia Clinic practicing oncology and internal medicine.

JOHN K. and ROBERTA (Beck '71) LUTTON have moved to Gambier, Ohio from Denver, Colo., where John has accepted a position as assistant professor in the chemistry department at Kenyon College in Gambier. They have one son, John Michael, age 5.

MARY (Lind '71) and MICHAEL MARSH are living in DuPont, Wash., where Mike is teaching fifth grade at Parkland elementary. Mary is at home with their two sons, Nathan, 2½, and Jonathan, 8 months. They would love to have any and all friends drop in for a visit. Their address is 204 Barksdale, DuPont, Wash. 98327.

JUDY (Kopplin) OLSON is residing in Spanaway, Wash., with husband, Charles, and daughter, Aliesha, 9, and son, Ashley, 7. She is working for the Department of Social and Health Services as consulting nurse in the Bremerton area nursing homes.

PETER OVERVOLD graduated from Northwestern College of Chiropractic, St. Paul, Minn. He is beginning a chiropractic practice in Portland, Ore., where he now resides.

PAMELA L. PETERSON has been elected vice president of Clayton B. Peterson & Associates, Inc., Bellevue, Wash. Pamela was formerly personnel officer for Seattle First National Bank. Clayton B. Peterson & Associates is a professional fund-raising firm specializing in counseling and consulting to non-profit organizations regarding their development programs.

### 1972

STEVEN T. COOK graduated from Concordia Theological Seminary, Ft. Wayne, Ind., on May 23, 1980. He was installed as pastor of Faith Lutheran Church in LaPine, Ore. on July 13, 1980.

M/M PAUL DUGGER are the parents of a son, Erik William, born July 8, 1980. They live in Puyallup, Wash.

M/M KAHLE, (Georgia Dronen) are the parents of a son, David Michael, born March 4, 1980. He joins twin sisters, Amy and Jenny, 3 yrs. old. They live in Olympia, Wash.

### 1973

M/M DAVID BEATTY (Judy Swalling '72) are the parents of a son, Ryan David, born May 22, 1980. He joins a sister, Kristine Marie, 2. They live in Aberdeen, Wash.

ROBERT B. BRADY, MA '73, is a captain in the U.S. AIR FORCE stationed at Upper Heyford Oxon, England. He directs the drug and alcohol section of Social Action.

M/M Robert CHASE (Sharon Ruth Dye) are the parents of a daughter, Lucy Anne, born May 18, 1980. She joins a sister, Janet, 4, and a brother, Robert, Jr., 2. Robert Sr. is a senior scientist at General Atomic Company and Sharon is a homemaker. They live in Chula Vista, Calif.

M/M Patrick DAWSON, (Joan Bangsund) are the parents of a son, Jared Oland, born Aug. 7, 1979. Joan still teaches fourth grade at a school in Kellogg, Idaho and Patrick is going to school in carpentry for his second year.

GORDON and PAULA (Carraway '69) GRIFFIN have moved to Kenai, Alaska where Gordon will be teaching drama and managing the new theatre at Soldotna High School and Paula will be special education teacher at Kenai High School. They had been in Barrow, Alaska for the past two years.

M/M RONALD JACOBSON (Phyllis Weaver '73) are the parents of a son, Mark Vernon, born June 22, 1980. They live in Renton, Wash. where they own a general contracting company.

MARY MANN is living in Phoenix, Ariz., where she will teach sign language classes at Arizona State University and Glendale Community College and will also be in parish education at Bethel Lutheran Church. For the past five years she has taught at Phoenix Day School for the Deaf.

ERIK M. SEVEREID is currently working as a broker in Paris, France for Johnson and Higgins.

DAVE SODERLUND completed his Ph.D in entomology at Berkeley in 1976. That fall his wife, Carol, and he left for England where he spent a year as a Rockefeller Foundation postdoctoral research fellow in the Insecticides and Fungicides Department at Rothamsted Experimental Station in the village of Harpenden. They returned to the U.S. in January of 1978 when he accepted his present position as assistant professor of insecticide toxicology at Cornell University's New York State Agricultural Experiment Station in Geneva, N.Y.

JAY STULLER x'73 of Kingwood, Tex., is a staff writer for Shell Oil's employee magazine, **Shell News**. He has also contributed articles to national magazines, including **Reader's Digest**, **Playboy**, **Sport**, and **Smithsonian**. He is presently working on two books, one on sports psychology and one on problems in the American legal system. He is a graduate of Golden Gate University in San Francisco. He and his wife, Donna, have two daughters, Jennifer, 5, and Nicole, 2.

M/M Mike WARR (CATHY RADFORD) are the parents of a daughter, Megan Catherine, born March 11, 1980. She joins a brother, Scott, age 3. Cathy is currently on leave from her job in the library at Curtis Junior High. They reside in Tacoma, Wash.

(continued on page 18)

## Berentson Runs Close Second In Wash. Gubernatorial Primary

Duane Berentson '51 of Burlington, Speaker of the Washington State House of Representatives, finished a close second in the Republican gubernatorial primary Sept. 16.

The 1979 PLU Alumnus of the Year was defeated by King County Executive John Spellman, whom Berentson has indicated he will support in the November general election, but finished well ahead of the third Republican contender, Secretary of State Bruce Chapman.

On the Democratic side, State Representative Jim McDermott defeated Governor Dixy Lee Ray in her bid for re-election.

Berentson has served in the State House of Representatives for 18 years and has held numerous committee posts as well as the positions of assistant Minority Leader and Minority Leader.

He is also a past member of the



Duane Berentson

PLU Alumni Board and is active in Burlington-area church and civic affairs.

(Remarks by Berentson concerning his PLU experience appear on the Comments page of this issue.)

(continued from page 17)

LINDA A. ZURFLUH has been appointed director of personnel for the Bellevue School District. She has been a teaching assistant in educational administration at the University of Washington this past year while completing her doctoral studies there.

### 1974

Rev. LINDA BEATTIE is living in Newton Centre, Mass., where she is working on a doctorate in pastoral counseling at Andover Newton Theological School in Boston, Mass.

BLAKE and CHERYL (Hobson '75) BOSTROM are living near Lynden, Wash., where Blake is working as a large-animal veterinarian in neighboring Ferndale since his graduation from the Washington State University Veterinary College in 1979. Cheryl, who finished her master's in English at Washington State University last July teaches at Mt. Baker High School.

SCOTT BUSER has been named executive director for Puyallup Valley Youth Services' Youth Employment Training Program. Scott served as career counselor since Jan. 1978 and was also responsible for YETP public relations for the past year. He lives with his wife, Kathy, in Lakewood.

GAYLE (Duggar) and Andy OLSEN are the parents of a daughter, Berit Ruth, born on July 2, 1980 in Anchorage, Alaska. Gayle is working part-time for the University of Washington as a coordinator for medical students rotating through the WAMI Clinical Unit in OB/GYN in Anchorage.

THOMAS and Nancy HEAVEY are celebrating the birth of their first child, Thomas, Jr., born Aug. 9, 1980. They have bought a house near St. Joseph's Hospital in Tacoma, Wash. Tom is working in the administration of CETA programs for the 31 smaller counties of the State. He is active as an executive board member of the State employees union. He was elected to represent State employees at the State AFL-CIO convention and the national American Federation of State, County and Municipal Employees (AFSCME) convention. He is continuing to work toward his master's in theology through courses offered by PLTS in Seattle. Nancy is on leave from her position as administrative secretary to the director of Special Education for Federal Way schools.

M/M BILL HERBERT '70 (CAMERON GRIFFITH '74) are the parents of a son, Jacob William, born April 5, 1980. He joins a brother Jonathan, age 4. Cameron sings in the capella group Madrigalia featuring Madrigals 13-voice group. She just finished her second year as church choir director. They live in Portland, Ore.

MICHAEL KERR graduated from Wartburg Theological Seminary in May 1980, and was ordained a pastor in the American Lutheran Church on Aug. 7. He was installed as associate pastor at Lutheran Church of the Redeemer, Racine, Wisc. on Aug. 24.

M/M David LIEZEN (Joy Tuff) are the parents of a daughter, Olivia Dawn, born May 5, 1980. She joins a brother, Matthew, 3. David is a fire extinguisher serviceman in Tacoma and Joy is a full-time homemaker.

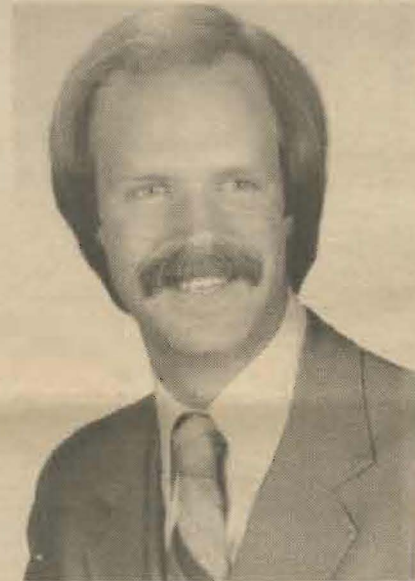
CHUCK & GAY (Thompson '75) MITCHELL are on a five-month "adventure tour" of Hong Kong, Singapore, Bali, Thailand, Burma, Nepal, and India which will end either in New Zealand or Europe. Chuck graduated from University of Oregon Law School on May 17, 1980. Gay completed her second year of teaching kindergarten.

M/M Greg CLERC (DEBRA ROSCOE) are the parents of a daughter, Rayna Ann, born April 24, 1980. She joins a sister, Tierza Renee, 20 months older to the day. Debra works part-time in ICU at Sacred Heart Medical Center and Greg works for an engineering firm in Spokane.

BARBARA SENFTLEBEN with husband, Paul, and children, Terran, 6, and Ananda, 5, are living in Elizaville, N.Y. where Barbara is employed as a physician's assistant at Vassar College and Paul is self-employed in the field of medical electronics.

### 1975

JUDY JACOBSON and Terry E. Collins were married on Aug. 30, 1980 and are now living in Edgemont, Calif., where Judy will teach and Terry is in the Air Force stationed at March AFB near Riverside.



Robb Dale

ROBB DALE has been appointed as marketing manager for the insurance agency of Griffin, Garrett, Johanson and Schacht, in Bellingham, Wash. Robb will be involved in the designing, pricing and placing of the insurance programs for the firm's commercial accounts.

M/M BRIAN DANIELS (CINDY WIBERG '75) are the parents of a daughter, Connie Jean, born March 8, 1980. She joins twin sisters, Kristy and Jorene, 4, and a brother, Russell, 2. They live in Deming, Wash. Brian is a carpenter in the area.

CATHY HOLKESTAD of Arcadia, Calif. and Randy Kent Pemberton of Wynne, Ark. were married Aug. 16, 1980 at Trinity Lutheran Church in San Gabriel, Calif. Randy works for the University of Southern California-Los Angeles. Cathy will begin her fourth year of teaching English and speech at Arcadia High School. They live in Temple City, Calif.

M/M JOHN A. PACHECO, MA '75, are the parents of a son, Michael John, born Jan. 20, 1980. John is case manager for the Co-op Multi-Service Center, a program providing after care services to ex-offenders in Bridgeport, Conn. He received his certificate in social work from Southern Connecticut State College in Dec.

1979. He also does volunteer work with alcoholics and families of alcoholics at the local Alcohol Council, and private counseling. They live in Stratford, Conn.

M/M LEMBIT RATASSEPP (KATHY WALGREN '75) are the parents of a son, Erik Lee-Edvard, born May 17, 1980. He joins a sister, Katrin, age 4. Lembit is currently a management consultant for the Department of Social and Health Services. They live in Tumwater, Wash.

DEAN REMICK is currently playing the role of Joe Pendleton in "Heaven Can Wait" at the Jester Dinner Playhouse in Los Angeles, Calif.

DON and DEBI (Nicol '76) ROWBERG are now living in Wisconsin where Don is in his second year of residency in internal medicine at Mt. Sinai Medical Center in Milwaukee. Debi is working as an R.N. on a subspecialty surgical floor at Mt. Sinai.

MARK SALZMAN claimed third in Norway where he competed with the U.S. team in an international dual meet against the Norwegians in Ardal, Norway. It was his 19th and final decathlon in seven years. He says he is not retiring, but will just be active in something else. He is track coach at Curtis High School in Tacoma, Wash.

PAUL and JILL (Tallman '74) SCHROEDER have moved to Mountain View, Calif., where Paul has been accepted for a three-year residency in obstetrics-gynecology at the Stanford Medical Center, Stanford University. He completed his internship at Maricopa County Hospital in Phoenix, Ariz.

M/M TRACY REINER '77 (BARBARA JUHL '75) are the parents of a daughter, Ann Kirstin, born Mother's Day, May 11, 1980. Tracy attends the University of Washington Dental School and will graduate in June 1981. They live in Seattle, Wash.

KIM (Taylor) SWANSON is living in Rochester, Minn. She completed her fourth year of medical school spending several months on a neurology clerkship in London. She received her M.D. in May 1980 from the University of California-Davis School of Medicine and has begun a residency at Mayo Clinic in internal medicine.

M/M TERRY TIEGEN (MARTHA SIMPSON '75) are the parents of a baby girl, Rachel Kirsten, born on Feb. 3, 1980 in Berkeley, Calif. Terry and Martha have been living in Berkeley for the past three years where Terry has been attending Pacific School of Religion and Martha was working for the Girl Scouts in San Francisco. Terry has been ordained a United Presbyterian minister and has accepted a call to First Presbyterian Church in Kent, Wash. as assistant minister.

Doug and KAY (Messmer) YORK have moved from Woodinville, Wash., to Kalama, Wash., where Doug will be beginning his first pastorate at the Assembly of God church. Kay has spent the last five years teaching preschool, kindergarten, and day care. She has been teaching most recently at Appletree Child Development Center in Kenmore, Wash.

(continued on page 19)

(continued from page 18)

**1976**

M/M GORDON AUGUSTINE (CHERYL HIGASHIYAMA '76) are teaching at the Vienna International School in Vienna, Austria. Gordon is teaching English as a second language and Cheryl is teaching biology. They have both taught at the American Community School in London for the past two years.

STEVE and JILL (Gjertson '78) BROWN moved to Colorado Springs, Colo., in July and are enjoying the sunshine and the beautiful Rockies. Steve is teaching seventh grade science at Manitou Springs Junior High, and Jill is teaching fifth grade at Manitou Springs Elementary.

SCOTT BRUND has set up his own theatrical production company, A. T. Productions. As its president and



William V. Nieman

## Nieman Elected President Boecon Corp.

William V. Nieman '54 has been elected president of Boecon Corporation, general construction subsidiary of the Boeing Company of Seattle.

Nieman, who previously served as vice-president for business development, was among the group of Boeing executives who founded the company in 1972. He had previously held Boeing Aerospace program management positions since 1956.

Boecon is a general contractor providing heavy industrial, civil and mechanical construction services primarily for the power and process industries. Besides heavy construction, it also provides construction management services and a design-construct capability with BE&C Engineers Inc., another Boeing subsidiary.

Nieman's experience with Boeing included involvement in the Bomarc and Minuteman missile programs.

A PLU business administration major, Nieman is the father of William G. Nieman, a PLU junior

producer he has signed contracts to produce the play "Upstream Toward Lethe," a show he acted in at UCLA and played Washington, D.C. He is also coordinating efforts of A. T. Productions with 1984 Olympics Committee and the Hollywood redevelopment project.

LINDA KAY DRUGGE was married to Thomas D. Isaacson on March 22, 1980. The ceremony was held at Saron Lutheran Church in Hoquiam, Wash. Linda continues to work as a juvenile probation counselor II for the Grays Harbor County Juvenile Department and Tom works as a salesman for the L. G. Isaacson Equipment Company. They are residing in Aberdeen, Wash.

PETER and MARY ELLEN (Ezell '77) GULSRUD are living in North Hollywood, Calif. Peter has accepted a position as principal at Pilgrim Lutheran Church School (K-6) in Santa Monica. Mary Ellen is a homemaker and mother to daughter Natalie born Dec. 1979, and she also works part-time as an R.N. at Saint Joseph Medical Center in Burbank.

LANI L. JOHNSON received her master of Divinity degree from Harvard Divinity School in June 1980, and is currently working as director of information for the international offices of the Christian Church (Disciples of Christ) in Indianapolis. She is also doing pulpit supply for Lutheran churches in the area. Her book, *Led By The Spirit*, a history of Lutheran Church Women, was published this spring and is available through Fortress Press, Philadelphia.

For the past four years SUSAN KERNS has been active in professional, community, and church organizations, and has been a fifth grade teacher in the Kellogg School District. She has recently moved to Germany and is teaching for the Department of Defense Dependents program for the next two years. She would like to hear from friends. Her address is: Osterholz-Scharmbeck Elementary School, APO New York 09355.

CHERYL LILJEBLAD of Garden Grove, Calif., has been selected as one of four BSN nurses from across the nation to participate in a nine-month neonatal nurse practitioner program at the University of California-Irvine Medical Center and will be working towards her master's degree in Los Angeles.

PAUL WENDELL TWEDT and family, wife, Gretchen; daughter, Lucinda, 3, and son, Daniel, 9 months, are living in Madrid, Spain, where Paul is teaching elementary music for the U.S. Air Force at Torrejon Air Base near Madrid.

M/M DAVID VERNOLA are the parents of twin boys born March 28, 1980. They have been named Loren and Justin. They live in Wasilla, Alaska.

**1977**

LINDA ALLEN, a correctional officer at the McNeil Island Federal Prison Camp for the past two years, is the Tacoma Police Department's new public information officer. Linda was one of the first women officers to serve at a men's federal prison. Linda

has worked at Western Washington State Hospital and for the Tacoma Department of Human Development. She also worked as a public relations specialist with the U.S. State Department and the Army intelligence school at Fort Holabird, Md.

SYLVIA NEGSTAD and JOHN COLLINS '76, were married Sept. 6, 1980. Formerly in Portland, Ore., they will now be in Braintree, Mass., where John will be working at the home office of Liberty Mutual Insurance Company. They will live in Braintree.

RACHEL EIDBO and GUS WALBOLT '76, were married at Prince of Peace Lutheran Church, Aug. 9, 1980 in Seattle, Wash. They will live in Walnut Creek, Calif., following their honeymoon.

BRUCE and ERMA (Hennessey '77) HOFFMAN are living in San Diego, Calif. Bruce has been promoted to underwriting manager of Argonaut Insurance Company and has opened a new branch office in San Diego. They would like to hear from or see friends. Their new address is: 4457 41st St. #4, San Diego, CA 92116.

M/M JEFF JOHNSON '76 (KATHERINE LORENTZEN '77) are the parents of a son, Brian Andrew, born Nov. 8, 1979. Jeff is employed at the law firm of Williams, Lanza, Kastner, & Gibbs. They live in Seattle, Wash.

CINDY KLETTKE graduated from the University of Washington School of Pharmacy on June 13, 1980. She spent a month in Alaska with PATTI RISDAL '76, waiting for the results of the State board exams and returned to find that she was a licensed pharmacist.

JEAN PHILPOTT and Bill Miller of St. Helens, Ore., were married Aug. 9, 1980. Jean is in her fourth year of teaching at Yankton School where she is a reading specialist and sixth-grade teacher. This year she will be involved in developing a program for the gifted and talented children in the St. Helens School District.

STEVE and CAROLYN (Swanson '77) EINGO are now living in Taiwan. Steve has spent the past two years at Luther Seminary in St. Paul, Minn., where Carolyn has been working as an R.N. on an o.b. ward. They are now beginning a two-year internship in Taiwan after which they will return to Luther for Steve's final year of seminary.

CAL and GALE (Waldkoetter '76) SKAUGSTAD are living in Fairbanks, Alaska. Cal is employed by the State of Alaska Department of Fish and Game as a fisheries biologist and fish culturalist. Gale is currently executive secretary for an Alaskan construction firm.

**1978**

SUE SONDKER and Rev. Jerry E. Ableidinger were married Aug. 2, 1980. Sue is working at St. Joseph Hospital in Tacoma, Wash., as an R.N. in the renal dialysis unit. Jerry is an

ordained Presbyterian minister and is serving at a church in Puyallup, Wash. They live in Puyallup.

VICTOR R. ARRISOLA has been elected 1980-81 chairman of the U.S. American GI Forum, Tacoma Chapter, a national veteran's family non-profit organization for Hispanic Advancement in Education & Other Community Affairs. He lives in Tacoma, Wash., with his wife, Elsa.

RON BENTON is in Chicago, Ill., where he is attending the J. L. Kellogg Graduate School of Management at Northwestern University in Evanston, Ill. Ron formerly worked as a budget and fiscal management analyst for the City of Tacoma.

BECKY BRADLEY is living in Portland, Ore. She is teaching third grade in Hillsboro, Ore., and will enter a resident teacher master's degree program through the University of Oregon for the Fall of 1980.

KAREN COVER '78, is a bio-physist at Penn State University, State College, Penn.

SHERMAN A. DANIELSON was accepted in the summer class at American Graduate School of International Management, Glendale, Ariz.

KAT DOWNS-NOON and husband, Chuck, want to share with friends their joy at the birth of Joshua Roy, born Aug. 23, 1980. They are living in San Antonio, Tex., where Chuck is television director/producer at Kelly Air Force Base and Kat is coaching vocalists at home. In Jan. 1981 they will be returning to Calif. to pursue their careers in cinematography and music.

ELEANOR M. ELY is living in Seattle working with General Motors in the Seattle office of GMAC as a clerk.

CHERYL DAVENPORT and DAVE LARSGAARD '76, were married Oct. 20, 1979 at Redeemer Lutheran Church in Great Falls, Mont. Since that time they have moved to Portland, Ore., where Dave works at Reynolds Aluminum in inside sales and Cheryl is a registered nurse on a cardiology floor at Good Samaritan Hospital.

SYNDE MANION is in her third year of seminary, two years at Wartburg, and now a student at PLTS.

M/M DAVID OLSON '79 (KARLA BECK '78) are the parents of a daughter, Katrina Anne, born Aug. 29, 1980. They own Olson's Woodworking in Gig Harbor, Wash., where they reside.

DAVE and GRETCHEN (Brauer '78) RIEKE are currently making their home in Minneapolis where Dave is on internship from Luther-Northwestern Seminary and Gretchen is beginning a master's degree program in nurse midwifery at the University of Minnesota.

SUSAN WIETZKE is living in Lewiston, Idaho where she is the assistant director of Social Services at St. Joseph's Hospital.

**1979**

MARK T. BAUGHMAN and KAREN BOYD '78 were married March 15, 1980. Mark is employed at the Ruth Dyckman Home for Girls in Seattle and Karen is a nurse at Children's Orthopedic Hospital. They live in Seattle, Wash.

(continued on page 20)

(continued from page 19)

CORINNE JOAN BEYER of Jacksonville, Ore., has been accepted as a graduate student at the San Francisco Conservatory of Music working toward her master's degree in piano performance.

TIMOTHY GERSTMANN of Wilbur, Wash., has completed work on his master's degree in social work administration and is presently exploring job opportunities in the Seattle/Tacoma area.

DIANA K. HESS is a substitute teacher in several districts in the Tacoma/Puyallup area.

CHRISTY JOHNSON has been teaching environmental education with National Wildlife Federation at a camp for young people in the Blue Ridge Mountains in North Carolina and has now returned to her home in Portland, Ore.



Nancy Kintner

NANCY KINTNER of Wenatchee, Wash., has recently undertaken a Church of the Brethren Volunteer Service (BVS) assignment at the Crescent Youth Resource Centre, Belfast, Northern Ireland. Nancy will assist in the supervision of the different activities, maintenance of the rooms, and the coordination of recreational programs.

RANDY LINDBLAD and TARA OTONICAR were married June 20, 1980 at St. Joseph's Catholic Church in Issaquah. She is currently substitute teaching in the Issaquah and the Snoqualmie Valley School Districts. This past summer, Randy worked on a research fellowship grant at the University of Washington School of Biochemistry concerning proteolytic enzymes and proteins. This month he will begin his second year of dental school at the University of Washington.

MARIE RIETMANN graduated from Oregon State University with honors in agriculture June 1, 1980. She was a member of Blue Key National Honor Fraternity and the student union program council. Leslie Sinex and Ruth Porter both 1979 graduates from PLU were in the same pledge class of Sigma Kappa Sorority with Marie at OSU.

DEBORAH A. RUEHL is a flight attendant for Northwest Orient Airlines. She is based and is living in Minneapolis, Minn.

## In Memoriam

CONSTANT T. BILLDT '52, passed away June 19, 1980 at the age of 55. He was employed by Westinghouse Company as a millwright general foreman. Constant was a U.S. Navy veteran of World War II and the Korean War. He was a member of Mount Cross Lutheran Church.

Survivors include his wife, Yvonne; three daughters, Karen and Roberta both of the family home in Tacoma, and Mrs. Gregory (Kristina) Cook also of Tacoma; two brothers, John of Puyallup and the Rev. Verner Billdt of San Bernardino, Calif.; and a sister, Mrs. Jordan (Eunice) Moe of Seattle, Wash.

The Rev. CLAUDE PELLETT, 88, chaplain of the Lutheran Welfare Society for 30 years, died on Aug. 18, 1980. He was ordained in 1924 at Tacoma Grace Lutheran Church where he served as pastor for six years before he left to serve as chaplain for the welfare society. He retired in 1960.

Survivors include his wife, Milla; a daughter, Mrs. May Klinzmann of Haigler, Neb.; a sister, Mrs. Esther Swift of Irrigon, Ore.; three brothers, Orville of Irrigon, Leslie of Puyallup and Frank of San Francisco; two grandchildren and nine great-grandchildren.

ORVE P. RONNEI of Stanwood, Wash., passed away on June 1, 1980.

AARON RONKEN, pastor-pilot for the American Lutheran Church was killed in his plane June 15, 1980 near Joplin, Mont. He had preached at Immanuel Lutheran and was flying to the church in town when the accident occurred. He served as pastor to the isolated farmers and ranchers in Montana, Wyoming and the Dakotas. He served about 65 families with his plane and there was opportunity for reaching more.

DONALD RYAN and SHERRY MCKEAN '78 were married April 5, 1980 in Libby, Mont. They are living in Tacoma, Wash., where Donald is employed by Alpine Guides of Tacoma and will be attending graduate school in archaeology at the University of Washington this fall. Sherry is employed by the Weyerhaeuser Company in Federal Way, Wash.

JULIE L. SMITH of Salem, Ore., was married to Mark Bierly on Aug. 15, 1980 in Salem, Ore.

### 1980

JILL JACKSON and DEAN KNUTSON '79 were married on June 14, 1980 in Salem, Ore. The couple will make their



Former "PLC" classmates enjoyed a pot-luck lunch and an afternoon of reminiscing at Volly Nordby Grande's home in Tacoma on June 23.



The second Thursday of July has been set for a pot-luck lunch each year for gals of the 30's and 40's. This year a group of 30 enjoyed a day at Volly Grande's home. These pictures show some of those who attended.

new home in Bellevue, Wash., where Dean is a marketing research analyst with GMA Research Corp. Jill is currently seeking employment as an elementary education teacher.

JACKILYN K. KEMMISH and Lt. THOMAS M. TVEIT '78 were married in Spokane, Wash., on Sept. 13, 1980. Tom is a 1st Lt. in the United States Marine Corps flying CH-53 helicopters in Southern California. Jacki graduated in August in nursing and will be working in Mission Viejo south of Irvine, Calif. They are living in Tustin, Calif.

JODENE ANDERSON is currently working as a price estimator with Boeing Computer Services at the Corporate Square office complex.

JANET BEDINGFIELD is teaching fifth grade at Mt. Angel's Middle School in Mt. Angel, Ore.

ELIZABETH A. IVERSON is employed as a registered nurse at St. Peter Hospital in Olympia, Wash.

SYLVIA NABBEN is living in Albert Lea, Minn., where she is combining her social work and religion by working as a tentmaker at First Lutheran Church in Albert Lea. She is working with jr. and sr. high school youth in programs and on a one-to-one relational ministry. This is a two-year program through Tentmakers, Inc.

MARY KATHLEEN ROBERTSON and Lester Wayne Bauck were married Aug. 9, 1980 in Mukilteo Presbyterian Church, Mukilteo, Wash.

## Republic of China Art Featured At PLU Mortvedt Library Gallery

The U.S. premiere of a Republic of China art exhibit opened in Tacoma Sept. 15 at Pacific Lutheran University and Tacoma Art Museum.

The travel exhibit of "Contemporary Calligraphy and Painting" is sponsored by the new Pacific Northwest International/Intercultural Education Consortium, headquartered at the new PLU Office of International Education and School of the Arts.

Approximately half of the 64 color scrolls from the National Museum of History in Taipei are on display at PLU's Mortvedt Library Gallery through Oct. 15. The remainder of the collection was loaned to the Tacoma Art Museum for showing Sept. 15-30.

The exhibition will appear during the next five years at some 40 American colleges and universities across the country, including other Northwest consortium members.

In this panorama of Chinese painting, modern Chinese artists are blending traditional theories and methods with the newer techniques and theories of Western painting. Oriental painting originally evolved from the art of calligraphy. Both are skills that date back nearly 4,000 years, and both are displayed in this exhibition.

The National Museum of History, Republic of China, views the current exhibition as a means to establish a higher degree of cultural and artistic interflow between the two countries.

Mortvedt Gallery hours are 8 a.m. to 11 p.m. Monday through Saturday, 1-11 p.m. Sunday.



Republic of China art on exhibit at PLU.

### Mexico Tour Offered During January Interim

A 21-day cultural tour of Mexico will give student-travelers the opportunity to appreciate modern and ancient Mexico during Pacific Lutheran University's January Interim.

Seven days in Mexico City will offer chances to learn about Mexico's colorful past and present, the marketplaces, native dances and ballet, pyramids and museums of art, history and anthropology. Visits to the major archeological sites of Mexico's Yucatan Peninsula will give glimpses of a still more distant past in temples and palaces representing the flowering of Mayan culture.

Three PLU professors will lead the tour: Dr. Laura Klein, anthropology; Dr. James Predmore, Spanish; and Dr. Susan Randall, history. Members of the community are welcome to join currently enrolled students for the tour.

More information may be obtained by contacting the tour leaders.

### Study Tour Of People's Republic Of China Slated For Late Spring

Pacific Lutheran University students, alumni, faculty, staff and friends are being extended "first notice" regarding a 15-day study tour of the People's Republic of China, slated to begin in late May or early June.

The guided tour and introduction to Chinese culture and history is led by PLU anthropology professor Dr. Greg Guldin.

Dr. Guldin, a specialist in East Asian studies, has conducted field work in Hong Kong and Southeast Asia and has previously visited a number of Chinese provinces.

The tour will include visits to Hong Kong, Peking, Shanghai, Xian, Luoyang, Guilin and Guangzhan (Canton). The "under \$3,000" cost covers round-trip transportation, Hong Kong accommodations, and all land costs in the People's Republic, according to Guldin.

Both students and non-students may arrange to take the tour as a course for four credits.

"To keep the group small, our expectations high and our enjoyment and learning maximal, we are limiting the tour to 30 people," Guldin explained.

A PLU tour group headed by Dr. Mordechai Rozanski, now director of the new Office of International Education at PLU, was one of the

early groups to visit the mainland. That tour was conducted in the summer of 1979.

For reservations or further information, write or call the PLU O.I.E. Office, (206) 383-7628, or Dr. Guldin, 383-7661. Reservation slots are expected to fill rapidly, so prompt response is advised.

## Gridders Savor Historic Pre-Season Poll Pinnacle

# Lutes Are No. 1



PLU's football brother act this year includes from left, Scott and Todd Davis, both centers; Garth Warren, de; Mark Warren, db; Jeff Rohr, fb; Greg Rohr, dt; Glenn Rohr, lb; Tom Wahl, g; and Tim Wahl, lb.

By Jim Kittilsby

Baseball's Pittsburgh Pirates jumped on the "We Are Family" bandwagon last year, replete with dancing on the dugouts, as they soared to the spire of their sports.

For PLU's Frosty Westering, football has always been a sharing, caring, family experience, not a one-shot hype. This year he'll deal with "family" literally, from a pinnacle position.

The Lutes, who have four sets of brothers in suit, enter the 1980 season as the nation's number one ranked NAIA Division II team, based on a pre-season poll of coaches.

While the Ripley and Guinness folk check out this brethren rarity (it's the second straight four kinsmen year for PLU), these featured families are more than journeymen athletes.

Freshman full back Jeff Rohr, a two-time prep state wrestling, joins brothers Glenn and Greg. Glenn, a senior linebacker, is a Lute co-captain. Greg, a junior, earned honorable mention all-league

## Hockey, Soccer Squad's Ready For Fall Action

PLU women's field hockey and men's soccer have more in common than the shape of their playing fields.

Both are coming off seasons two games over the .500 mark. That foot feat is a first-ever for the kickers, who were 9-7-4. As for the flickers, 8-6-4, it was the first time they had surfaced above the break-even plane in six years.

Colleen Hacker will have seven hockey players in suit with previous experience, including All-WCIC selections Julie Haugen and Kim Krumm. Haugen, an attack player, and Krumm, attached to the link position, are smart and aggressive.

Interim coach Arno Zoske takes over a squad which gave up just 1.5 goals per game in 1979. NWC all-star midfielder Harold Kutz, fullback Randy Koetje, and forward Paul Swenson are key figures.

honors last season at defensive tackle.

Senior Scott Davis, a three-year letterman, will be pushed at the center position by brother Todd, a sophomore. Freshmen linebacker Tim Wahl will have scrimmage contact with his brother, senior guard Tom Wahl. Tom was a first team Northwest Conference all-star in 1979.

Junior defensive end Garth Warren will offer some stop-squad hints to younger (and 60 pounds lighter) brother Mark, a freshman in the secondary picture.

The Lutes open Northwest Conference play October 18, hosting Whitworth.

## Conference Title Repeat Is Lute Hoop Team Goal

An N-W-C R-E-P-E-A-T tapestry requires nine letters and PLU basketball will have enough monogram bearers to stitch the piece together.

Nine lettermen, including the three leading scorers of 1979-80, will give Lute coach Ed Anderson valuable depth experience as he attempts to knit together a fourth straight Northwest Conference championship team.

Better team speed is forecast for PLU, which opens hoop drills Nov. 1.

The leading returnee is 6-7 forward Dave Lashua, an all-league, all-district, and Little All-Northwest first team pick last year. Lashua, who averaged 16.4 points per contest, became the twelfth Lute player in history to reach the 1000 career point plateau.

PLU, 16-11 last year, 10-2 in league play, has other front court scoring punch. John Greenquist, 6-7, zeroed in of 14 points a game and earned all-conference laurels. Guard Dan Allen, a second team NWC all-star, brings 13.3 gunnery stats into the new season.

### 1980 PLU FOOTBALL

SEPT. 13	ALUMNI,	(35-21)
SEPT. 20	WESTERN,	(30-0)
SEPT. 27	at HUMBOLDT ST.,	(45-14)
OCT. 4	at CENTRAL, 1:30	
OCT. 11	SO. OREGON, 1:30	
OCT. 18	WHITWORTH, 1:30	
OCT. 25	PACIFIC, 1:30	
NOV. 1	at LINFIELD, 1:30	
NOV. 8	LEWIS & CLARK*, 1:30	
NOV. 15	at WILLAMETTE, 1:30	

\*Homecoming  
Franklin Pierce Stadium  
So. 112th & Portland Ave.

(Contact with your local newspaper can influence whether they publish PLU scores. If you can't get the score locally, call PLU (206) 531-6900.)

### 1980-81 PLU BASKETBALL

DEC. 4	ST. MARTIN'S
DEC. 6	CENTRAL
DEC. 13	WESTERN
DEC. 22	at OREGON
DEC. 28-29-30	at OREGON TECH TOURNAMENT: OIT, LINFIELD, L.A. STATE
JAN. 9	WHITWORTH
JAN. 10	WHITMAN
JAN. 13	at WASHINGTON ST.
JAN. 16	EASTERN
JAN. 19	PACIFIC
JAN. 21	at ST. MARTIN'S
JAN. 23	at WILLAMETTE
JAN. 24	at LINFIELD
JAN. 27	CONCORDIA (ORE.)
JAN. 30	at WHITMAN
JAN. 31	at WHITWORTH
FEB. 3	at CENTRAL
FEB. 7	at SEATTLE PACIFIC
FEB. 9	LEWIS & CLARK
FEB. 13	LINFIELD
FEB. 14	WILLAMETTE
FEB. 17	at WESTERN
FEB. 20	at LEWIS & CLARK
FEB. 21	at PACIFIC
FEB. 26, 28 & MAR. 2, 3	DISTRICT PLAYOFFS

## Women's Cross Country Team Has New Coach

PLU has four reliable women roadrunners back, but with cross country scoring based on a flock of five, the Lady Lutes need one more.

In a sense, they have one Moore.

Brad Moore, who has successfully put distance runners through their paces at the University of Oregon and Lewis & Clark, takes over a squad which placed second at the 1979 WCIC meet, fourth in NCWSA regional competition.

Setting the pace will be junior Dianne Johnson, defending WCIC champion. Johnson was fourth at regionals and 45th at the national chase.

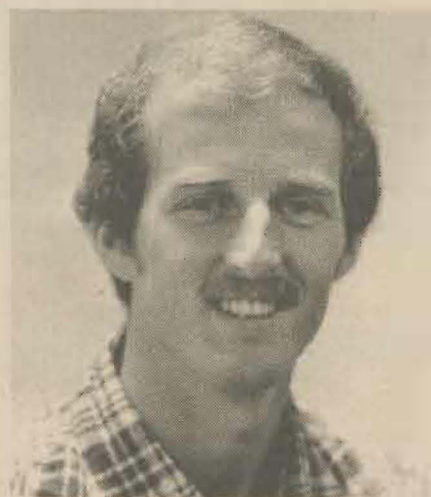
Another Johnson, sophomore Monica, on the mend from a track injury, is a steady performer. Senior Kris Kylo, a three year veteran, has shown improvement each year. Sophomore Lisa Corwin, who passed up cross country last season to concentrate on track, is the fourth point producer.

Pacific Lutheran harriers, whose daily meanderings include the Fort Lewis fringe, run at ease to the marching cadence "hep," but not with kin word hepatitis.

The Lutes' top four runners are back, including senior standout Rusty Crim, who was slowed in 1979 by the liver inflammation. Other vets, whose collective efforts gave the Lutes second place in the Northwest Conference, fourth in the District 1 chase, are senior Steve Kastama, senior Mike Carlson, and junior Randy Yoakum.

With Kastama setting the pace at both conference and district races, a pattern was established. Kastama was 9th and 22nd, Carlson 10th and 24th, Crim 13th and 26th, and Yoakum 14th and 27th.

New harrier honcho Brad Moore was a cross country assistant at University of Oregon during the Ducks' 1977 national championship season.



Brad Moore



PLU women's crew team earns national ranking.

## Zoske, Moore Fill Four Lute Coaching Slots

Pacific Lutheran has filled coaching vacancies in four sports with two appointments to the Lute athletic staff.

Brad Moore relinquished a position as program executive with the Tri-Met Fitness Center in Portland to take on the PLU's men's and women's cross country as well as women's track coaching duties.

Former Notre Dame soccer coach Arno Zoske will be the Lute boot mentor in 1980, a one year replacement for Dave Asher, who is in England on a teacher exchange program.

A full-time appointment, Moore is a specialist in biomechanics and adaptive physical education and will serve as an assistant professor. A record-setting pole vaulter at Green River Community College, Lewis & Clark, and Portland State, Moore has had coaching stints at Reed College, Lewis & Clark, and the University of Oregon.

Zoske, a part-timer at PLU, was a standout soccer player at Northern Illinois University. Over an eight year span, Zoske served Notre Dame as assistant trainer and had tours of duty as both assistant and head soccer coach of the Fighting Irish.

## National Ranking Climaxes 'Most Successful' Rowing Season Ever

Closing the book on the most successful crew season in school history, PLU placed in four races at the National Women's Rowing Association championships staged in mid-June near Oak Ridge, Tenn.

The Lady Lutes, entered in both the collegiate and open brackets of the four day regatta, got a third place senior pair finish from Paulette Bergh and Ruth Babcock in the open division.

Dave Peterson's rowers were fifth in senior fours, sixth in both the light pair and light four. Pairs medals came in open competition, the four with cox hardware earned in the collegiate bracket.

In the best showing ever for PLU women in national competition, Bergh and Babcock, both seniors, had the fastest time of any collegiate pair, trailing only Philadelphia's Vesper Boat Club (3:48.12) and the merged College Boat Club-Eastern Development Camp (3:51.26). Missing second place by inches, PLU was 3:51.31.

Stocked by Bergh, with Babcock in seat three, the Lute senior four trailed only California, Washington, Wisconsin, and Stanford.



Arno Zoske

## Volleyball Team Seeks Return To Winning Ways

PLU's reconditioned volleyball machine, which broke down last year, slipping from low gear into reverse, has a chance to get back on respectability road if Kathy Hemion can get the custom transmission parts to mesh.

The Lady Lutes, who cruised through a 23-15 season in 1978, sputtered through a 2-20 campaign last fall.

Coach Hemion will look to the new recruits for a setter to complement junior Jorie Lange. Senior Pat Shelton is PLU's best hitter, while juniors Lori Hanson and Robin Koch can set and spike. Senior Luann Macan is an excellent back row player.



# Calendar of Events

## Board of Regents

### Tacoma and Vicinity

Dr. T.W. Anderson  
 Mr. George Davis  
 Mr. M.R. Knudson, chairman  
 Dr. Richard Klein  
 Mr. George Lagerquist  
 Mr. Michael McKean  
 Mr. Harry Morgan  
 Dr. W.O. Rieke  
 Dr. Roy Virak  
 Rev. David Wold, vice-chairman

### Seattle and Vicinity

Mr. Gary Baughn  
 Rev. Charles Bomgren  
 Mr. Leif Eie  
 Rev. Dr. A.G. Fjellman  
 Mr. Paul Hoglund  
 Mr. Victor Knutzen  
 Mr. Clayton Peterson  
 Mrs. Doris Rolander  
 Rev. Dr. Clarence Solberg  
 Dr. Christy Ulleland, secretary  
 Dr. George Wade

### Western Washington

Mrs. Helen Belgum  
 Rev. David Steen

### Eastern Washington

Dr. Roger Larson  
 Mr. Alvin Fink

### Oregon

Mr. Howard Hubbard  
 Mr. Galven Irby  
 Rev. John Milbrath  
 Dr. Casper (Bud) Paulson

### Montana/Idaho/Alaska

Rev. Roland Grant  
 Rev. Robert Newcomb  
 Mr. Martin Pihl  
 Mrs. Dorothy Schnaible

### Advisory

Rev. Gordon Braun, ALC/NPD  
 Dr. Ronald Matthias, ALC  
 Dr. Richard Solberg, LCA  
 Rev. Llano Thelin, LCA/PNWS  
 Perry Hendricks Jr., treasurer  
 Drs. Angelia Alexander,  
 John Herzog,  
 Franklin Olson, faculty  
 Bob Gomulkiewicz,  
 Mark Davis, Kim Tucker, students  
 PLU Officers.

## Editorial Board

Dr. William O. Rieke . . . . . President  
 Lucille Giroux . . . . . Pres. Exec. Assoc.  
 Ronald Coltom . . . . . Dir. Alumni  
 Relations

James L. Peterson . . . . . Editor  
 James Kittilsby . . . . . Sports Editor  
 Edith Edland . . . . . Class Notes  
 Kenneth Dunmire . . . . . Staff  
 Photographer

Linda Walker . . . . . Tech. Asst.  
 O.K. Devin, Inc. . . . . Graphics Design

## What's New With You?

Name \_\_\_\_\_  
 Address \_\_\_\_\_  
 City \_\_\_\_\_ State \_\_\_\_\_ Zip \_\_\_\_\_

Please check this box if address above is new. (Attach old mailing label below.)

Class \_\_\_\_\_ Spouse Class \_\_\_\_\_  
 Spouse maiden name \_\_\_\_\_

\_\_\_\_\_  
 \_\_\_\_\_  
 \_\_\_\_\_  
 \_\_\_\_\_  
 \_\_\_\_\_

Mall to:  
 Nesvig Alumni Center  
 Pacific Lutheran U.  
 Tacoma, Wash. 98447

## October

**1-15** Art Exhibit, painting & calligraphy of the Republic of China, Mortvedt Gallery



**1** Concert, Washington Brass Quintet, Univ. Center, 8 p.m.

**3** ARTIST SERIES, Soprano Marni Nixon, Eastvold Aud., 8 p.m.

**4** Football, PLU at Central Washington, 1:30 p.m.

**5** Beckman Lecture Series, Theologian Jose Miguez-Bonino, Univ. Center, 7:30 p.m.

**6** Lecture, scholar Frank Pinion, "The Brontes", Ingram Hall, 7:30 p.m.

**7** Concert, University Symphony Orchestra, Eastvold Aud., 8 p.m.

**8** Concert, Seattle Symphony, Olson Aud., 8 p.m.

**9** Concert, University Jazz Ensemble, Univ. Center, 8 p.m.  
 Recital, guitarist David Tanenbaum, Ingram Hall, 8 p.m.

**11** DAD'S DAY Football, S. Oregon College at PLU, FP Stadium, 1:30 p.m.

**13** Debate, representatives of Presidential candidates, 7:30 p.m.

**15** Debate, gubernatorial candidates Spellman & McDermott, Olson Aud., 7:30 p.m.  
 Recital, Knapp piano students, Univ. Center, 8 p.m.

**16** Faculty Chamber Series, Univ. Center, 8 p.m.

**16-18** University Theatre, "Dark of the Moon," Eastvold Aud., 8 p.m.

**18** LEAGUE DAY Football, Whitworth at PLU, FP Stadium, 1:30 p.m.

**21** Concert, University Symphonic Band, Eastvold Aud., 8 p.m.

**22** Lecture, Senator Mark Hatfield (Ore.), Univ. Center, 8 p.m.

**23-25** University Theatre, "Dark of the Moon," Eastvold Aud., 8 p.m.

**24-25** Council on Gifted Children, Univ. Center, all day

**25** Football, Pacific at PLU, FP Stadium, 1:30 p.m.

**28** Recital, pianist Calvin Knapp, Eastvold Aud., 8 p.m.  
 Debate, attorney general candidates Rosellini, Eikenberry & Miller, 7:30 p.m.

**30-31** Concert, Evening of Contemporary Music, Eastvold Aud., 8 p.m.

## November

**1** Football, PLU at Linfield, 1:30 p.m.  
 ARTIST SERIES, Akiyoshi-Tabackin Big Band, Olson Aud., 8 p.m.

**2** Reformation Sunday Celebration, Olson Aud., 7 p.m.  
**4** ELECTION DAY

**7** Jazz Ensemble Festival, Eastvold Aud., all day  
 Faculty Chamber Series, Ingram Hall, 8 p.m.  
 Homecoming songfest, stomp, 7-9 p.m.

**8** HOMECOMING (see alumni section)  
 Football, Lewis & Clark at PLU, FP Stadium, 1:30 p.m.  
 Alumni Homecoming Banquet, Olson Aud., 5:30 p.m.

**9** Recital, flutist T. Mizukami, Univ. Center, 7:30 p.m.

**11** Concert, University Symphony Orchestra, Eastvold Aud., 8 p.m.

**11** Concert, University Symphony Orchestra, Eastvold Aud., 8 p.m.

**12** Recital, Knapp piano students, Univ. Center, 8 p.m.

**14-15** Opera Workshop, Eastvold 228, 8 p.m.  
 Vaudeville '80, Olson Aud., 8 p.m.

**15** Football, PLU at Willamette, 1:30 p.m.

**18** Recital, Student Chamber Ensemble, Univ. Center, 8 p.m.

**19** Recital, guitarist Andrew Schulman, Univ. Center, 8 p.m.

**20** Recital, Faculty Chamber Series, Univ. Center, 8 p.m.

**20-22** University Theatre, "Harvey," Eastvold Aud., 8 p.m.

**23** University Theatre, "Harvey," Eastvold Aud., 2 p.m.

Recital, Dahi organ students, Trinity Lutheran Church, 4 p.m.  
**25** Composer's Forum, Univ. Center, 8 p.m.

## December



**4** Christmas Festival Concert, Eastvold Aud., 8 p.m.

**5** Lucia Bride Festival, Eastvold Aud., 8 p.m.

**6** Christmas Festival Concert, Portland Civic Auditorium, 8 p.m.

**7** Christmas Festival Concert, Seattle Opera House, 8 p.m.

**9** Concert, University Symphonic Band, Eastvold Aud., 8 p.m.

**12,13** Christmas Festival Concert, Eastvold Aud., 8 p.m.

**13** Children's Theatre, "Lions, Witch and the Wardrobe," Eastvold Aud., 2:30 p.m.

**14** Christmas Festival Concert, Eastvold Aud., 4 p.m.